

Market Analysis By State: Texas

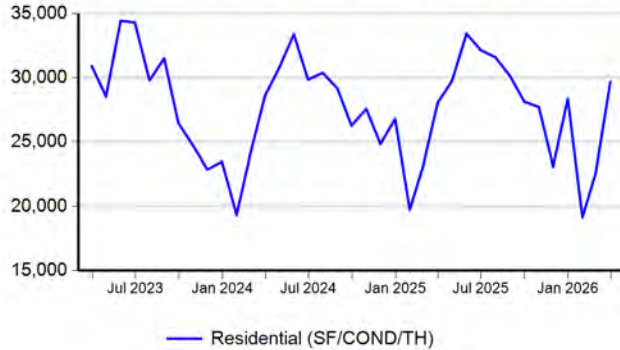
Property Type	Closed Sales*	YoY%	Dollar Volume	YoY%	Average Price	YoY%	Median Price	YoY%	Price/Sqft	YoY%	DOM	New Listings	Active Listings	Pending Sales	Months Inventory	Close To OLP
All(New and Existing)																
Residential (SF/COND/TH)	29,693	5.8%	\$12,546,682,587	5.1%	\$422,547	-0.7%	\$334,900	-1.2%	\$188	-2.0%	78	57,604	139,490	34,105	5.0	93.7%
YTD:	71,449	0.7%	\$29,561,104,344	0.9%	\$413,737	0.1%	\$328,000	-0.8%	\$185	-2.1%	80	151,726	134,866	86,620		93.1%
Single Family	28,259	6.2%	\$12,022,376,965	5.4%	\$425,435	-0.8%	\$335,000	-1.5%	\$186	-2.0%	78	53,407	127,042	32,434	4.8	93.8%
YTD:	67,983	1.4%	\$28,351,194,977	1.5%	\$417,034	0.2%	\$330,000	-1.2%	\$183	-1.9%	80	140,554	123,173	82,451		93.2%
Townhouse	648	-1.4%	\$223,783,955	-8.6%	\$345,346	-7.3%	\$300,000	-11.2%	\$190	-4.2%	75	1,698	4,350	779	6.9	93.2%
YTD:	1,546	-12.4%	\$536,109,183	-17.2%	\$346,772	-5.5%	\$309,990	-6.1%	\$188	-4.2%	79	4,582	4,156	1,904		92.9%
Condominium	754	-4.6%	\$289,073,006	2.0%	\$383,386	6.9%	\$255,000	1.2%	\$262	1.8%	96	2,499	8,098	892	10.7	91.6%
YTD:	1,880	-10.1%	\$660,165,061	-11.2%	\$351,152	-1.2%	\$235,500	-5.8%	\$248	-3.3%	99	6,590	7,536	2,265		90.9%
Existing Home																
Residential (SF/COND/TH)	21,979	10.1%	\$9,328,702,891	8.7%	\$424,437	-1.3%	\$329,000	-0.3%	\$190	-1.7%	73	45,471	107,946	24,172	5.3	94.1%
YTD:	52,809	4.4%	\$21,858,531,953	4.0%	\$413,917	-0.4%	\$320,000	-1.5%	\$186	-2.0%	76	117,784	102,814	61,973		93.5%
Single Family	20,666	10.7%	\$8,855,350,993	9.0%	\$428,499	-1.5%	\$330,000	-1.5%	\$188	-1.7%	72	41,701	96,933	22,708	5.0	94.2%
YTD:	49,694	5.2%	\$20,798,511,343	4.7%	\$418,532	-0.5%	\$325,000	-0.6%	\$184	-1.7%	75	107,833	92,528	58,307		93.6%
Townhouse	562	4.9%	\$192,022,980	-0.2%	\$341,678	-4.9%	\$299,000	-6.4%	\$190	-1.7%	74	1,395	3,438	617	6.8	93.5%
YTD:	1,280	-7.0%	\$437,912,967	-9.7%	\$342,120	-2.9%	\$300,000	-3.2%	\$186	-2.2%	78	3,727	3,271	1,525		93.1%
Condominium	729	-2.7%	\$274,047,086	5.0%	\$375,922	7.9%	\$249,900	2.0%	\$260	1.5%	95	2,375	7,575	847	10.5	91.6%
YTD:	1,798	-9.4%	\$609,705,903	-9.9%	\$339,102	-0.5%	\$229,125	-5.7%	\$245	-3.5%	98	6,224	7,015	2,141		90.9%
New Construction																
Residential (SF/COND/TH)	7,710	-4.8%	\$3,216,180,147	-4.2%	\$417,144	0.6%	\$344,620	-1.5%	\$181	-3.3%	95	12,133	31,544	9,933	4.2	92.6%
YTD:	18,638	-8.4%	\$7,701,737,463	-7.1%	\$413,228	1.3%	\$340,000	-1.5%	\$180	-2.8%	92	33,942	32,051	24,647		92.3%
Single Family	7,596	-4.3%	\$3,168,160,037	-3.5%	\$417,083	0.9%	\$344,735	-1.2%	\$180	-3.1%	95	11,706	30,109	9,726	4.1	92.6%
YTD:	18,286	-7.9%	\$7,551,375,919	-6.4%	\$412,959	1.6%	\$340,000	-1.1%	\$179	-2.5%	92	32,721	30,645	24,144		92.3%
Townhouse	84	-30.6%	\$31,029,939	-40.7%	\$369,404	-14.5%	\$325,130	-16.6%	\$195	-13.3%	78	303	912	162	7.1	91.4%
YTD:	263	-32.0%	\$97,090,769	-40.3%	\$369,166	-12.1%	\$326,990	-13.5%	\$197	-9.3%	81	855	885	379		91.7%
Condominium	25	-39.0%	\$15,066,039	-32.9%	\$602,642	10.0%	\$401,620	8.6%	\$342	17.6%	100	124	523	45	14.6	93.5%
YTD:	81	-23.6%	\$50,037,216	-25.1%	\$617,743	-2.0%	\$395,182	1.6%	\$321	3.2%	111	366	521	124		91.1%

* Closed Sale counts for most recent 3 months are Preliminary.

Trend Analysis By State: Texas

Residential, All (New and Existing)

Monthly Units Sold



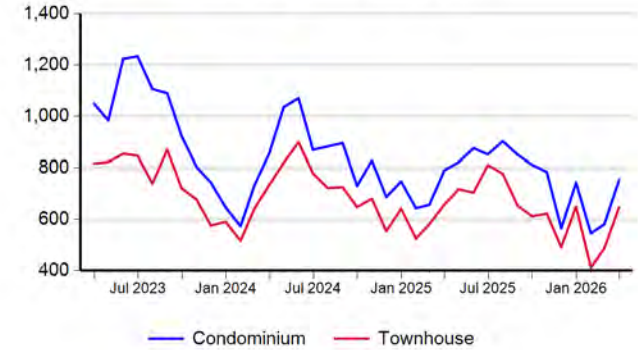
Single Family, New vs. Existing

Monthly Units Sold



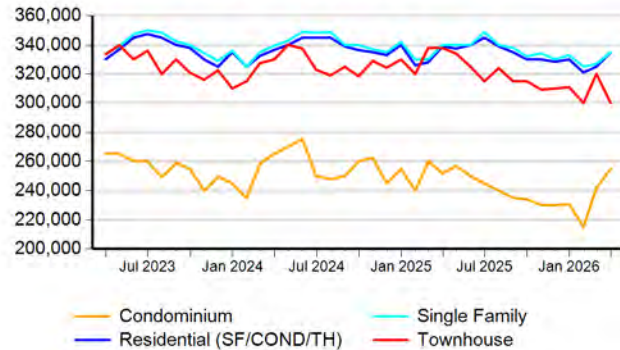
COND/TH, All (New and Existing)

Monthly Units Sold



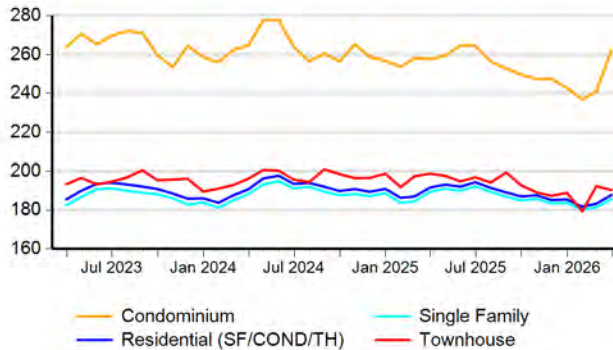
All (New and Existing) Construction

Median Sale Price



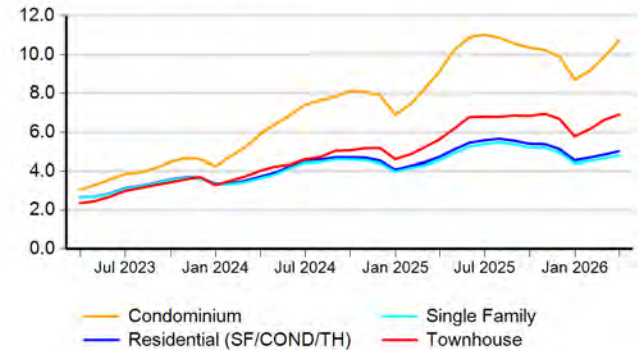
All (New and Existing) Construction

Average Close Price PSF



All (New and Existing) Construction

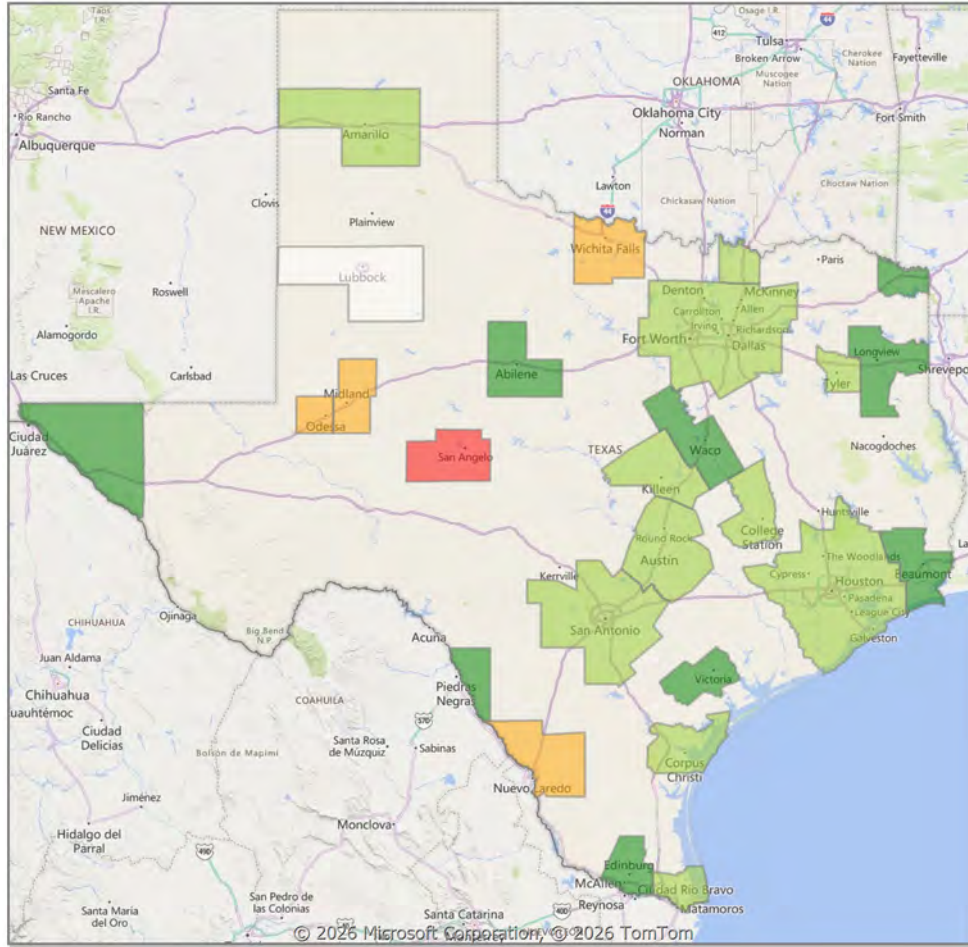
Months Inventory



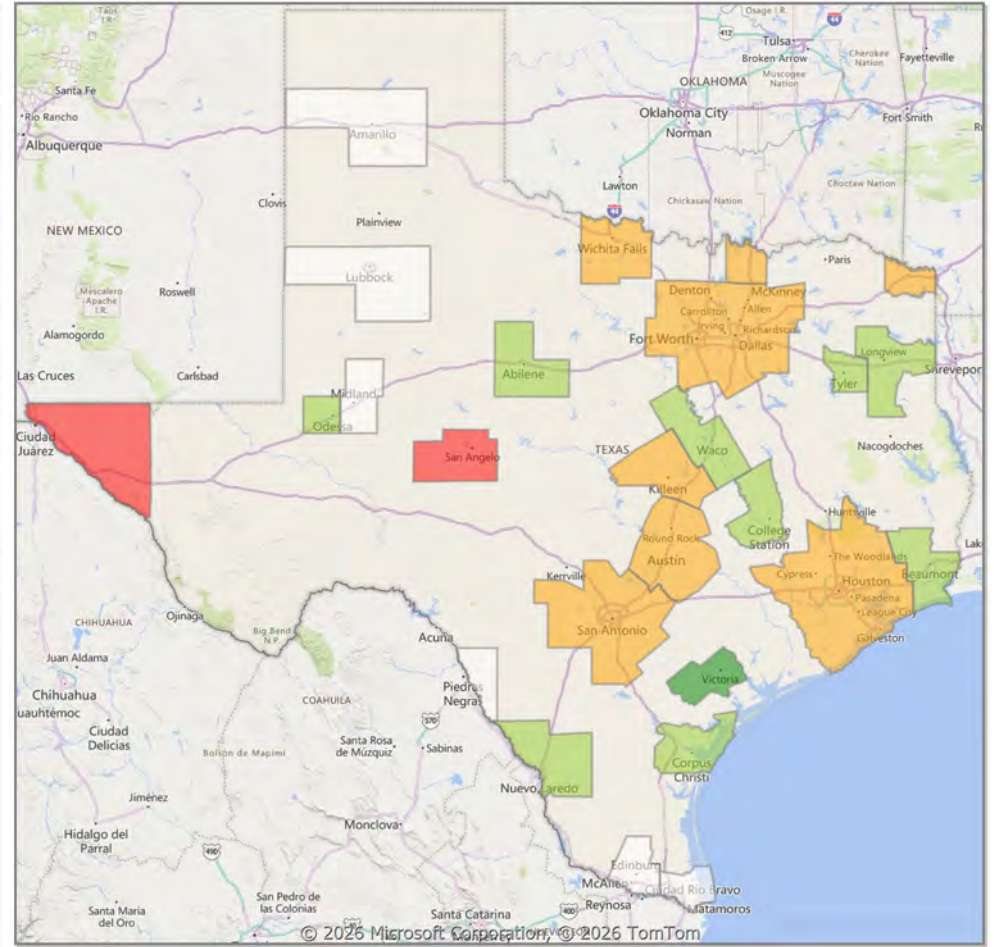
* Closed Sale counts for most recent 3 months are Preliminary.

Comparison By Metropolitan Statistical Area in Texas

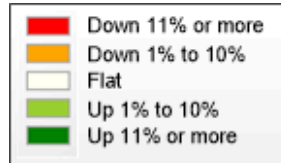
**Residential* Closed Sales
YoY Percentage Change**



**Residential* Avg Close Price Per SqFt
YoY Percentage Change**

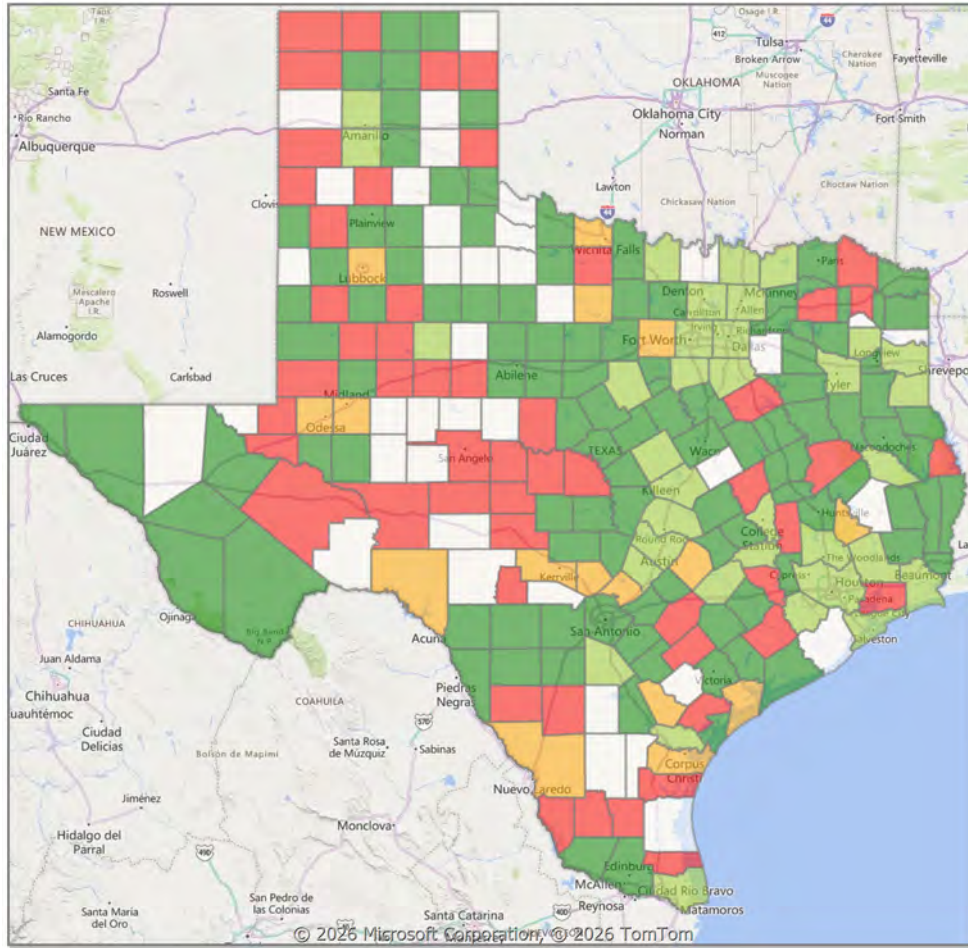


* Residential includes Single Family, Condominium and Townhouse.

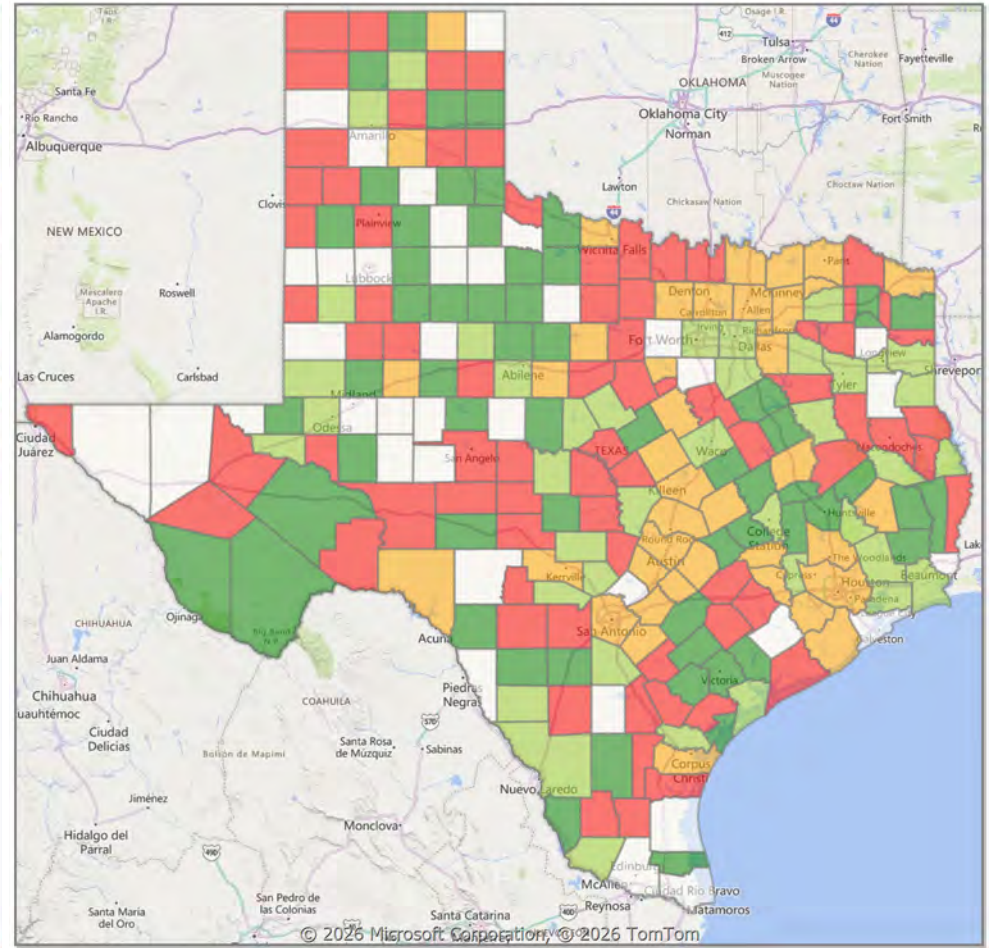


Comparison By County in Texas

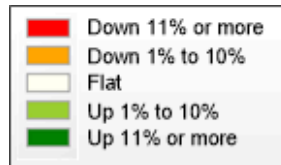
Residential* Closed Sales YoY Percentage Change



Residential* Avg Close Price Per SqFt YoY Percentage Change



* Residential includes Single Family, Condominium and Townhouse.



Market Analysis By Metropolitan Statistical Area: Lubbock

Property Type	Closed Sales*	YoY%	Dollar Volume	YoY%	Average Price	YoY%	Median Price	YoY%	Price/Sqft	YoY%	DOM	New Listings	Active Listings	Pending Sales	Months Inventory	Close To OLP
All(New and Existing)																
Residential (SF/COND/TH)	484	0.8%	\$138,289,701	6.0%	\$285,723	5.1%	\$235,000	0.1%	\$140	0.9%	56	923	1,614	580	3.7	94.8%
YTD:	1,139	-0.4%	\$330,523,271	3.4%	\$290,187	3.7%	\$234,000	-0.3%	\$140	1.9%	59	2,465	1,582	1,494		94.4%
Single Family	473	0.2%	\$136,738,081	5.9%	\$289,087	5.7%	\$238,000	0.9%	\$140	1.1%	55	908	1,558	567	3.6	94.8%
YTD:	1,119	-0.4%	\$327,113,045	3.5%	\$292,326	3.9%	\$235,000	-0.1%	\$141	1.8%	59	2,412	1,530	1,467		94.4%
Townhouse	5	-16.7%	\$867,800	-24.8%	\$173,560	-9.8%	\$175,000	-8.4%	\$122	-6.1%	92	14	52	12	8.3	98.1%
YTD:	11	-26.7%	\$2,065,800	-30.1%	\$187,800	-4.7%	\$190,000	0.0%	\$133	6.4%	75	46	47	18		98.4%
Condominium	6	200.0%	\$737,650	222.1%	\$122,942	7.4%	\$109,500	-4.4%	\$116	-0.4%	97	1	4	1	1.7	92.9%
YTD:	9	80.0%	\$1,378,650	67.3%	\$153,183	-7.1%	\$127,500	6.3%	\$130	-0.7%	76	7	5	9		94.2%

* Closed Sale counts for most recent 3 months are Preliminary.

Existing Home																
Property Type	Closed Sales*	YoY%	Dollar Volume	YoY%	Average Price	YoY%	Median Price	YoY%	Price/Sqft	YoY%	DOM	New Listings	Active Listings	Pending Sales	Months Inventory	Close To OLP
Residential (SF/COND/TH)	360	6.8%	\$98,462,262	16.0%	\$273,506	8.6%	\$225,000	1.4%	\$132	2.9%	53	741	1,319	422	3.9	94.5%
YTD:	826	2.0%	\$231,439,520	6.6%	\$280,193	4.5%	\$225,000	0.0%	\$132	2.6%	58	1,968	1,259	1,069		94.2%
Single Family	349	6.1%	\$96,906,775	16.1%	\$277,670	9.4%	\$225,000	0.6%	\$132	3.3%	52	726	1,264	410	3.8	94.5%
YTD:	809	2.3%	\$228,608,735	7.0%	\$282,582	4.7%	\$225,000	-0.1%	\$132	2.7%	57	1,917	1,209	1,045		94.2%
Townhouse	5	-16.7%	\$867,800	-24.8%	\$173,560	-9.8%	\$175,000	-8.4%	\$122	-6.1%	92	14	51	11	10.0	98.1%
YTD:	8	-42.9%	\$1,480,800	-46.7%	\$185,100	-6.8%	\$181,000	-6.0%	\$123	-1.8%	66	44	45	15		98.6%
Condominium	6	200.0%	\$737,650	222.1%	\$122,942	7.4%	\$109,500	-4.4%	\$116	-0.4%	97	1	4	1	1.7	92.9%
YTD:	9	80.0%	\$1,378,650	67.3%	\$153,183	-7.1%	\$127,500	6.3%	\$130	-0.7%	76	7	5	9		94.2%

* Closed Sale counts for most recent 3 months are Preliminary.

New Construction																
Property Type	Closed Sales*	YoY%	Dollar Volume	YoY%	Average Price	YoY%	Median Price	YoY%	Price/Sqft	YoY%	DOM	New Listings	Active Listings	Pending Sales	Months Inventory	Close To OLP
Residential (SF/COND/TH)	124	-13.3%	\$39,822,552	-12.6%	\$321,150	0.8%	\$263,500	6.5%	\$163	-0.1%	64	182	295	158	2.9	95.7%
YTD:	313	-6.0%	\$99,069,131	-3.4%	\$316,515	2.8%	\$253,125	2.7%	\$163	1.6%	62	497	323	425		95.1%
Single Family	124	-13.3%	\$39,822,552	-12.6%	\$321,150	0.8%	\$263,500	6.5%	\$163	-0.1%	64	182	294	157	2.9	95.7%
YTD:	310	-6.6%	\$98,488,896	-3.8%	\$317,706	3.1%	\$255,109	3.5%	\$163	1.6%	62	495	321	422		95.0%
Townhouse	-	0.0%	-	0.0%	-	0.0%	-	0.0%	-	0.0%	-	-	1	1	0.9	0.0%
YTD:	3	200.0%	\$585,000	234.5%	\$195,000	11.5%	\$195,000	11.5%	\$160	30.8%	100	2	1	3		97.7%
Condominium	-	0.0%	-	0.0%	-	0.0%	-	0.0%	-	0.0%	-	-	0	0	-	0.0%
YTD:	-	0.0%	-	0.0%	-	0.0%	-	0.0%	-	0.0%	-	0	0	0		0.0%

* Closed Sale counts for most recent 3 months are Preliminary.

Trend Analysis By Metropolitan Statistical Area: Lubbock

Residential, All (New and Existing)



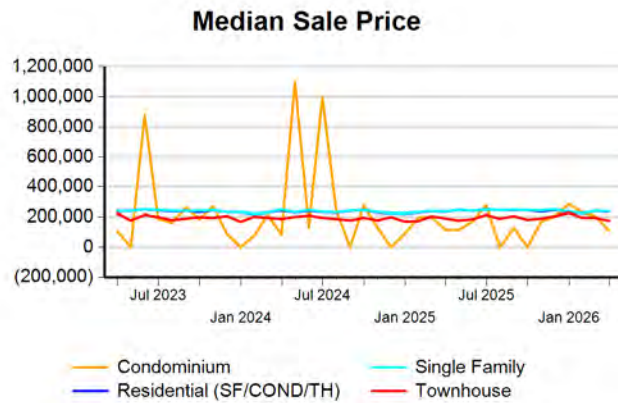
Single Family, New vs. Existing



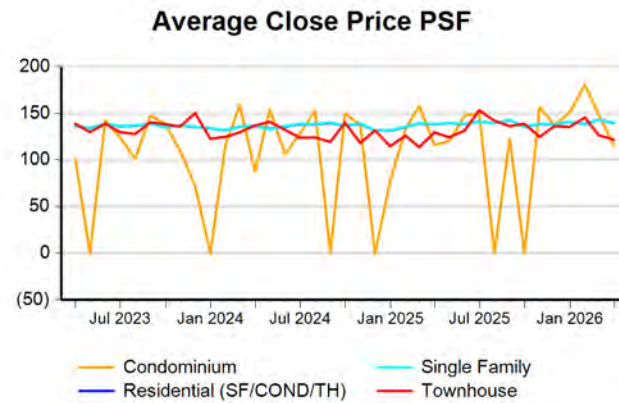
COND/TH, All (New and Existing)



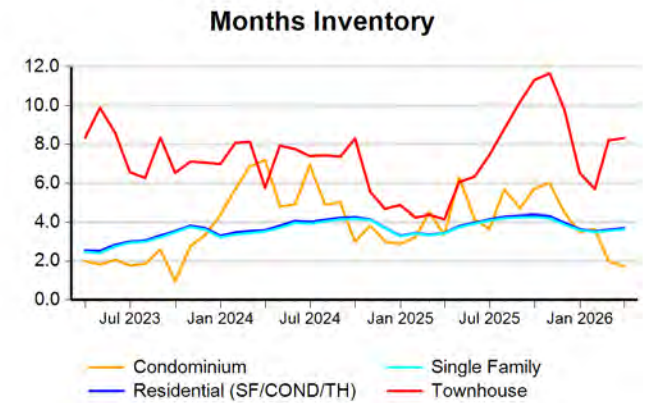
All (New and Existing) Construction



All (New and Existing) Construction



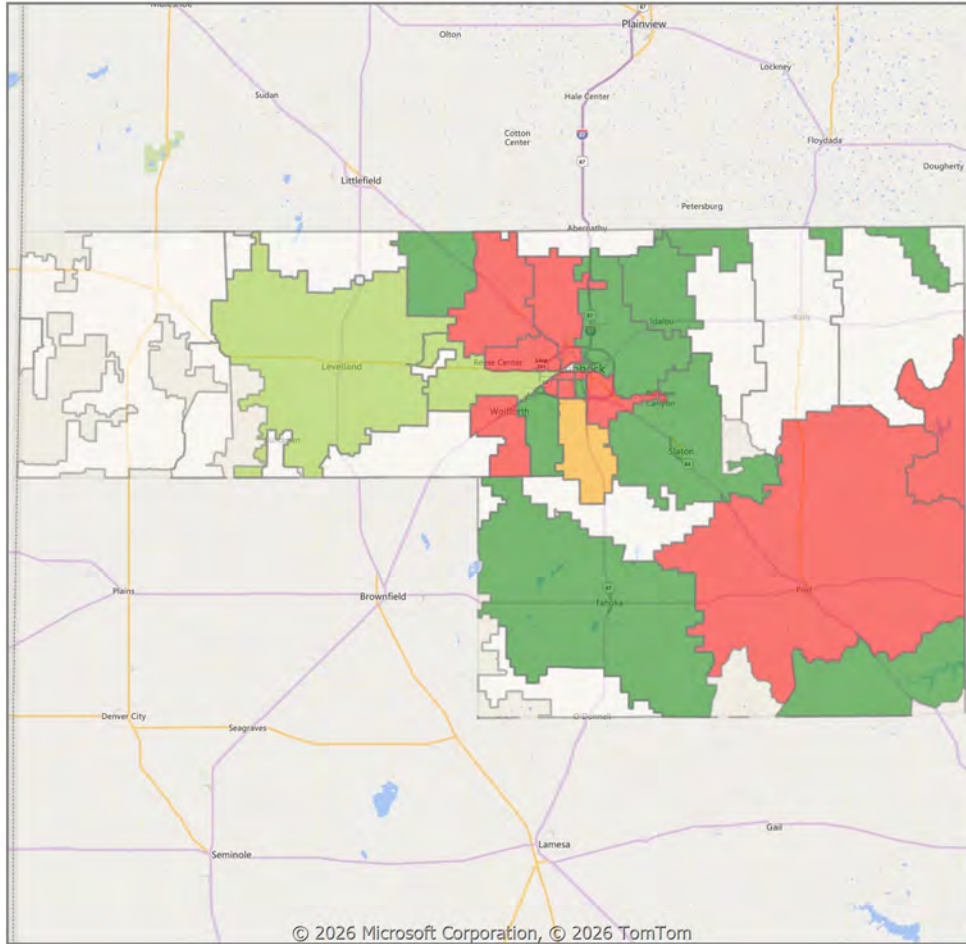
All (New and Existing) Construction



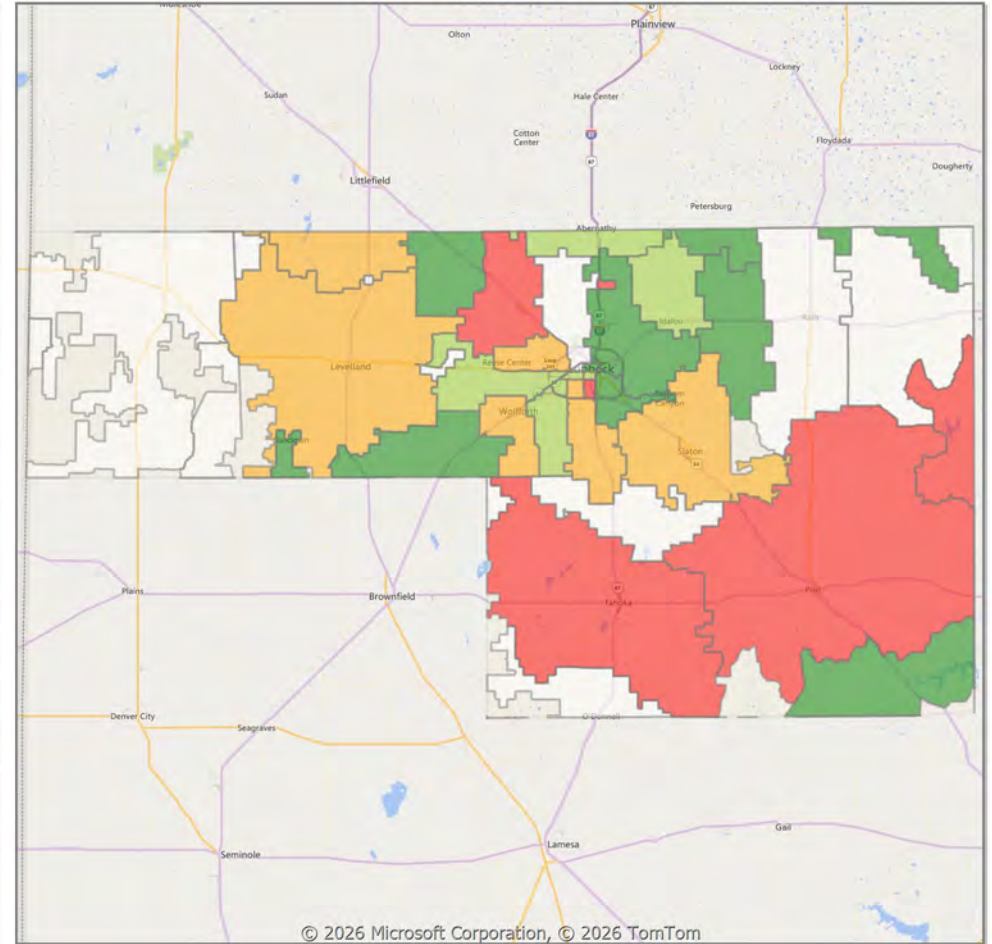
* Closed Sale counts for most recent 3 months are Preliminary.

Comparison By Zip Code* in Lubbock MSA

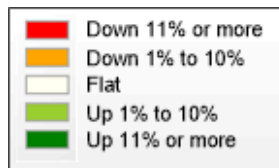
Residential Closed Sales
YoY Percentage Change**



Residential Avg Close Price Per SqFt
YoY Percentage Change**

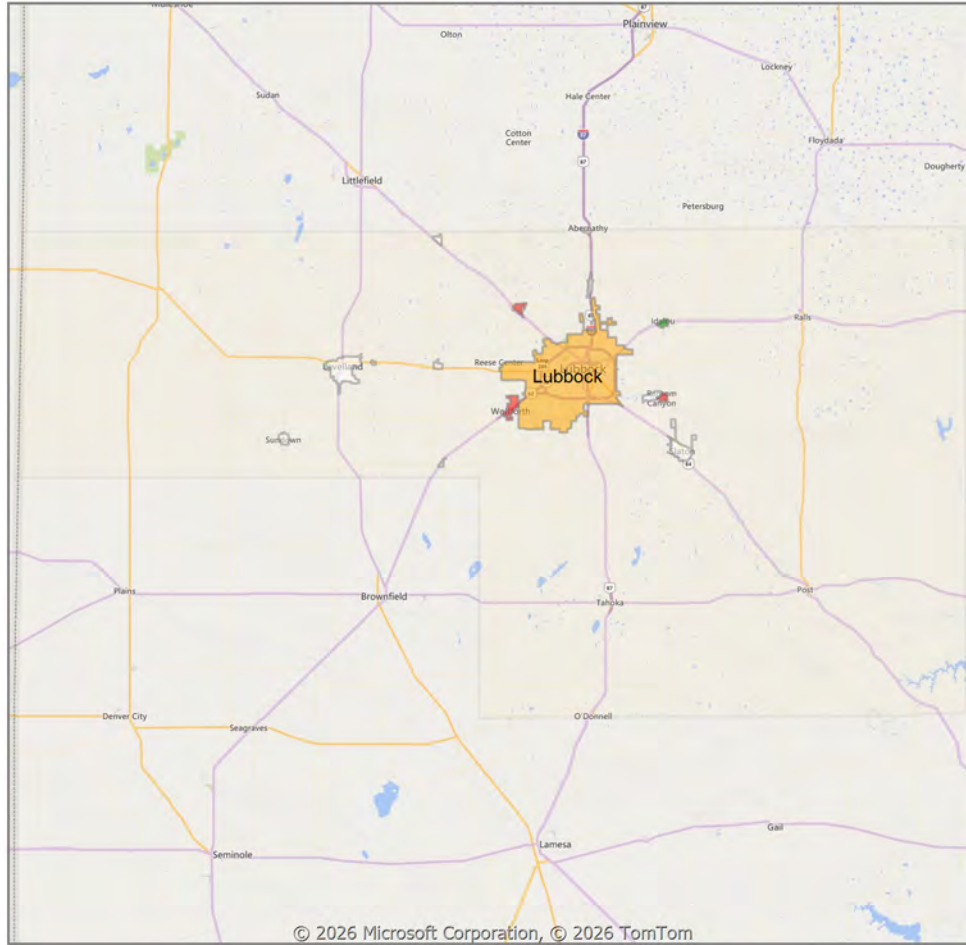


* US Census Zip Code Tabulation Area
** Residential includes Single Family, Condominium and Townhouse.

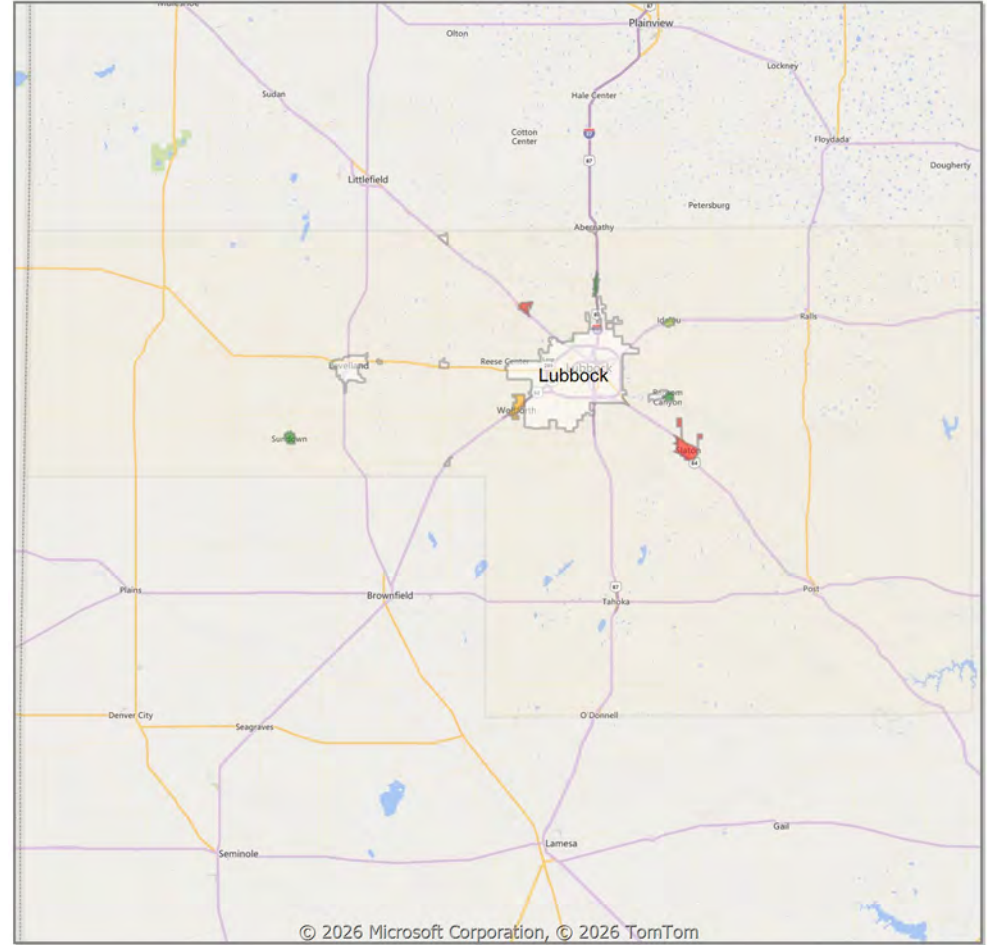


Comparison By Local Market Area* in Lubbock MSA

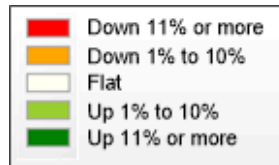
Residential Closed Sales
YoY Percentage Change**



Residential Avg Close Price Per SqFt
YoY Percentage Change**



* Census Place Group
** Residential includes Single Family, Condominium and Townhouse.



Market Analysis By County: Hockley County

Property Type	Closed Sales*	YoY%	Dollar Volume	YoY%	Average Price	YoY%	Median Price	YoY%	Price/Sqft	YoY%	DOM	New Listings	Active Listings	Pending Sales	Months Inventory	Close To OLP
All(New and Existing)																
Residential (SF/COND/TH)	27	22.7%	\$6,034,150	0.9%	\$223,487	-17.8%	\$208,890	-19.5%	\$125	0.8%	66	27	69	22	3.6	94.3%
YTD:	53	10.4%	\$12,714,701	9.1%	\$239,900	-1.2%	\$219,500	-1.6%	\$124	4.0%	72	84	68	64		93.3%
Single Family	27	22.7%	\$6,034,150	0.9%	\$223,487	-17.8%	\$208,890	-19.5%	\$125	0.8%	66	27	69	22	3.6	94.3%
YTD:	53	10.4%	\$12,714,701	9.1%	\$239,900	-1.2%	\$219,500	-1.6%	\$124	4.0%	72	84	68	64		93.3%
Townhouse	-	0.0%	-	0.0%	-	0.0%	-	0.0%	-	0.0%	-	-	-	-	-	0.0%
YTD:	-	0.0%	-	0.0%	-	0.0%	-	0.0%	-	0.0%	-	-	-	-	-	0.0%
Condominium	-	0.0%	-	0.0%	-	0.0%	-	0.0%	-	0.0%	-	-	-	-	-	0.0%
YTD:	-	0.0%	-	0.0%	-	0.0%	-	0.0%	-	0.0%	-	-	-	-	-	0.0%
Existing Home																
Residential (SF/COND/TH)	16	-5.9%	\$3,204,100	-18.0%	\$200,256	-12.9%	\$157,600	-30.0%	\$103	-2.8%	86	25	65	20	4.7	93.4%
YTD:	32	-13.5%	\$6,307,100	-23.0%	\$197,097	-10.9%	\$152,600	-30.5%	\$97	-6.6%	83	69	62	44		91.8%
Single Family	16	-5.9%	\$3,204,100	-18.0%	\$200,256	-12.9%	\$157,600	-30.0%	\$103	-2.8%	86	25	65	20	4.7	93.4%
YTD:	32	-13.5%	\$6,307,100	-23.0%	\$197,097	-10.9%	\$152,600	-30.5%	\$97	-6.6%	83	69	62	44		91.8%
Townhouse	-	0.0%	-	0.0%	-	0.0%	-	0.0%	-	0.0%	-	-	-	-	-	0.0%
YTD:	-	0.0%	-	0.0%	-	0.0%	-	0.0%	-	0.0%	-	-	-	-	-	0.0%
Condominium	-	0.0%	-	0.0%	-	0.0%	-	0.0%	-	0.0%	-	-	-	-	-	0.0%
YTD:	-	0.0%	-	0.0%	-	0.0%	-	0.0%	-	0.0%	-	-	-	-	-	0.0%
New Construction																
Residential (SF/COND/TH)	11	120.0%	\$2,830,050	36.6%	\$257,277	-37.9%	\$231,660	-44.2%	\$158	-15.5%	37	2	4	2	0.7	95.7%
YTD:	21	90.9%	\$6,407,601	85.1%	\$305,124	-3.1%	\$234,000	-13.7%	\$163	-0.7%	55	15	6	20		95.6%
Single Family	11	120.0%	\$2,830,050	36.6%	\$257,277	-37.9%	\$231,660	-44.2%	\$158	-15.5%	37	2	4	2	0.7	95.7%
YTD:	21	90.9%	\$6,407,601	85.1%	\$305,124	-3.1%	\$234,000	-13.7%	\$163	-0.7%	55	15	6	20		95.6%
Townhouse	-	0.0%	-	0.0%	-	0.0%	-	0.0%	-	0.0%	-	-	-	-	-	0.0%
YTD:	-	0.0%	-	0.0%	-	0.0%	-	0.0%	-	0.0%	-	-	-	-	-	0.0%
Condominium	-	0.0%	-	0.0%	-	0.0%	-	0.0%	-	0.0%	-	-	-	-	-	0.0%
YTD:	-	0.0%	-	0.0%	-	0.0%	-	0.0%	-	0.0%	-	-	-	-	-	0.0%

* Closed Sale counts for most recent 3 months are Preliminary.

Market Analysis By County: Lubbock County

Property Type	Closed Sales*	YoY%	Dollar Volume	YoY%	Average Price	YoY%	Median Price	YoY%	Price/Sqft	YoY%	DOM	New Listings	Active Listings	Pending Sales	Months Inventory	Close To OLP
All(New and Existing)																
Residential (SF/COND/TH)	441	-1.6%	\$128,268,213	4.5%	\$290,858	6.1%	\$240,000	2.2%	\$141	1.0%	54	871	1,470	542	3.6	95.1%
YTD:	1,045	-1.9%	\$305,497,129	0.9%	\$292,342	2.8%	\$235,000	-0.8%	\$142	1.3%	58	2,290	1,438	1,384		94.7%
Single Family	430	-2.3%	\$126,724,366	4.4%	\$294,708	6.8%	\$243,000	3.0%	\$142	1.2%	53	856	1,415	529	3.5	95.1%
YTD:	1,025	-1.9%	\$302,090,774	1.0%	\$294,723	3.0%	\$238,974	0.0%	\$142	1.2%	58	2,238	1,387	1,357		94.7%
Townhouse	5	-16.7%	\$867,800	-24.8%	\$173,560	-9.8%	\$175,000	-8.4%	\$122	-6.1%	92	14	52	12	8.3	98.1%
YTD:	11	-26.7%	\$2,065,800	-30.1%	\$187,800	-4.7%	\$190,000	0.0%	\$133	6.4%	75	46	47	18		98.4%
Condominium	6	200.0%	\$737,650	222.1%	\$122,942	7.4%	\$109,500	-4.4%	\$116	-0.4%	97	1	3	1	1.3	92.9%
YTD:	9	80.0%	\$1,378,650	67.3%	\$153,183	-7.1%	\$127,500	6.3%	\$130	-0.7%	76	6	4	9		94.2%
Existing Home																
Residential (SF/COND/TH)	330	6.1%	\$92,111,081	15.5%	\$279,124	8.8%	\$227,900	2.4%	\$134	2.8%	50	699	1,194	389	3.8	94.8%
YTD:	756	1.5%	\$214,259,637	4.6%	\$283,412	3.1%	\$229,500	1.0%	\$134	1.8%	56	1,822	1,135	984		94.6%
Single Family	319	5.3%	\$90,562,892	15.5%	\$283,896	9.7%	\$230,000	2.2%	\$135	3.1%	49	684	1,140	377	3.7	94.8%
YTD:	739	1.8%	\$211,432,515	5.1%	\$286,106	3.2%	\$230,000	0.0%	\$134	1.8%	56	1,772	1,085	960		94.5%
Townhouse	5	-16.7%	\$867,800	-24.8%	\$173,560	-9.8%	\$175,000	-8.4%	\$122	-6.1%	92	14	51	11	10.0	98.1%
YTD:	8	-42.9%	\$1,480,800	-46.7%	\$185,100	-6.8%	\$181,000	-6.0%	\$123	-1.8%	66	44	45	15		98.6%
Condominium	6	200.0%	\$737,650	222.1%	\$122,942	7.4%	\$109,500	-4.4%	\$116	-0.4%	97	1	3	1	1.3	92.9%
YTD:	9	80.0%	\$1,378,650	67.3%	\$153,183	-7.1%	\$127,500	6.3%	\$130	-0.7%	76	6	4	9		94.2%
New Construction																
Residential (SF/COND/TH)	111	-19.0%	\$36,155,816	-15.9%	\$325,728	3.9%	\$264,900	7.4%	\$164	0.9%	67	172	276	153	2.9	95.8%
YTD:	289	-9.7%	\$91,223,581	-6.8%	\$315,653	3.2%	\$254,377	3.7%	\$163	1.7%	63	468	303	400		95.0%
Single Family	111	-19.0%	\$36,155,816	-15.9%	\$325,728	3.9%	\$264,900	7.4%	\$164	0.9%	67	172	275	152	2.9	95.8%
YTD:	286	-10.3%	\$90,643,715	-7.3%	\$316,936	3.5%	\$256,387	4.4%	\$163	1.7%	62	466	301	397		95.0%
Townhouse	-	0.0%	-	0.0%	-	0.0%	-	0.0%	-	0.0%	-	-	1	1	0.9	0.0%
YTD:	3	200.0%	\$585,000	234.5%	\$195,000	11.5%	\$195,000	11.5%	\$160	30.8%	100	2	1	3		97.7%
Condominium	-	0.0%	-	0.0%	-	0.0%	-	0.0%	-	0.0%	-	-	-	-	-	0.0%
YTD:	-	0.0%	-	0.0%	-	0.0%	-	0.0%	-	0.0%	-	-	-	-	-	0.0%

* Closed Sale counts for most recent 3 months are Preliminary.

Trend Analysis By County: Hockley County

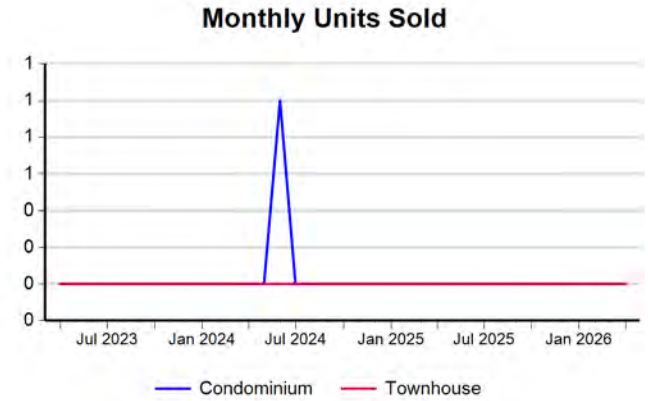
Residential, All (New and Existing)



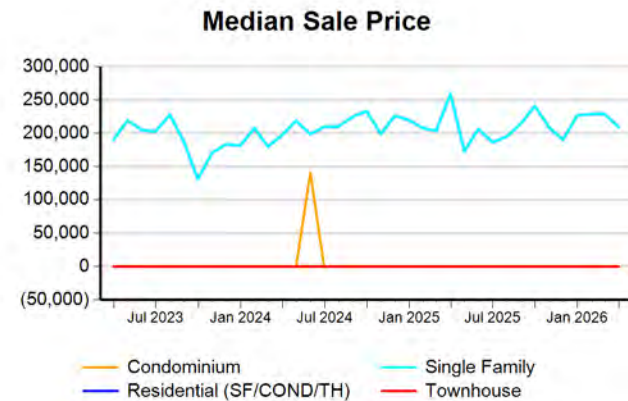
Single Family, New vs. Existing



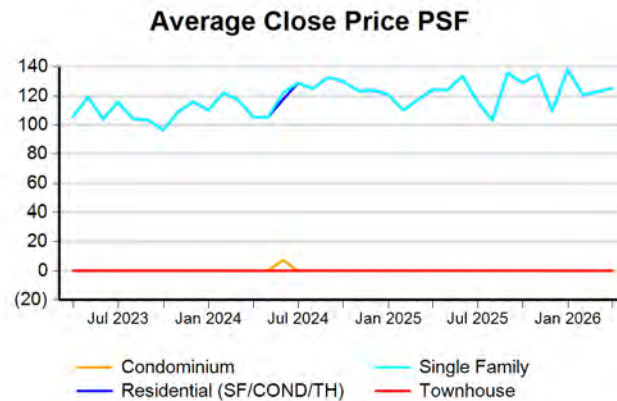
COND/TH, All (New and Existing)



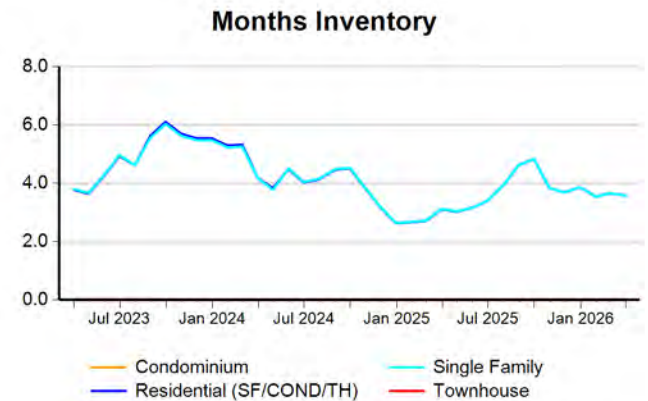
All (New and Existing) Construction



All (New and Existing) Construction



All (New and Existing) Construction

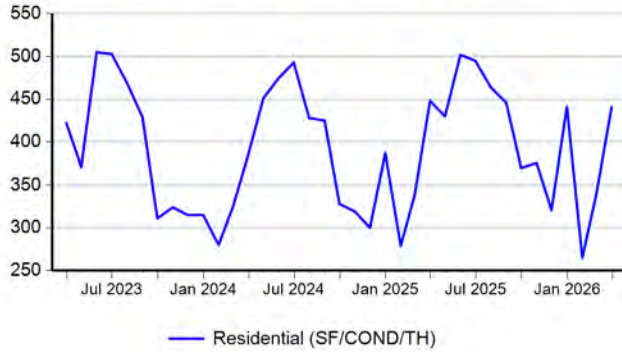


* Closed Sale counts for most recent 3 months are Preliminary.

Trend Analysis By County: Lubbock County

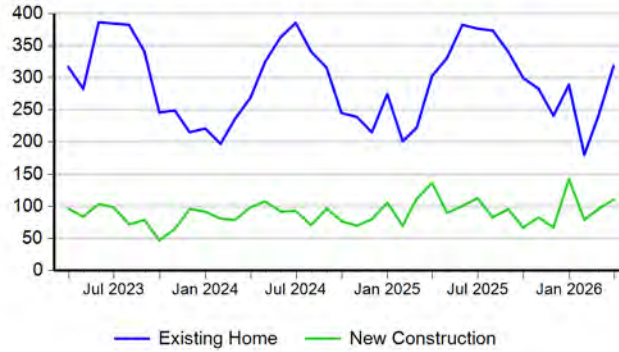
Residential, All (New and Existing)

Monthly Units Sold



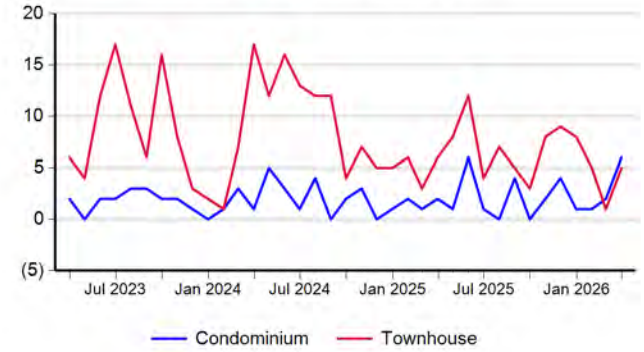
Single Family, New vs. Existing

Monthly Units Sold



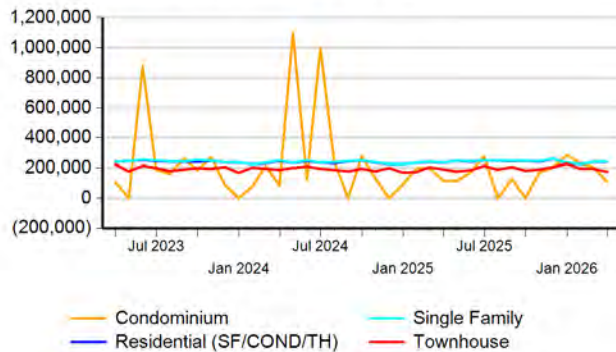
COND/TH, All (New and Existing)

Monthly Units Sold



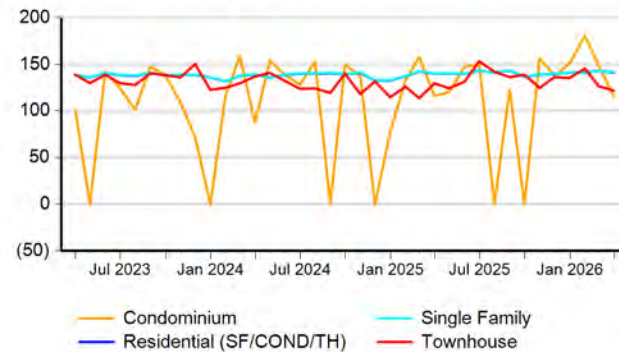
All (New and Existing) Construction

Median Sale Price



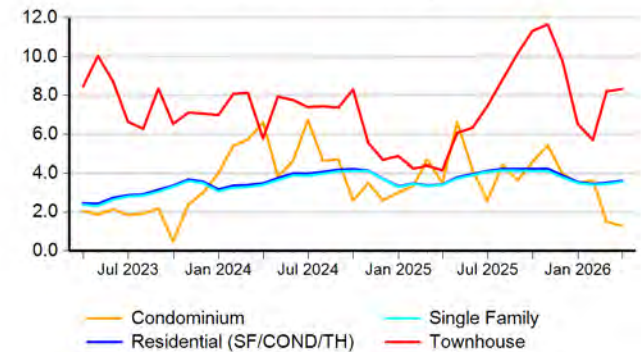
All (New and Existing) Construction

Average Close Price PSF



All (New and Existing) Construction

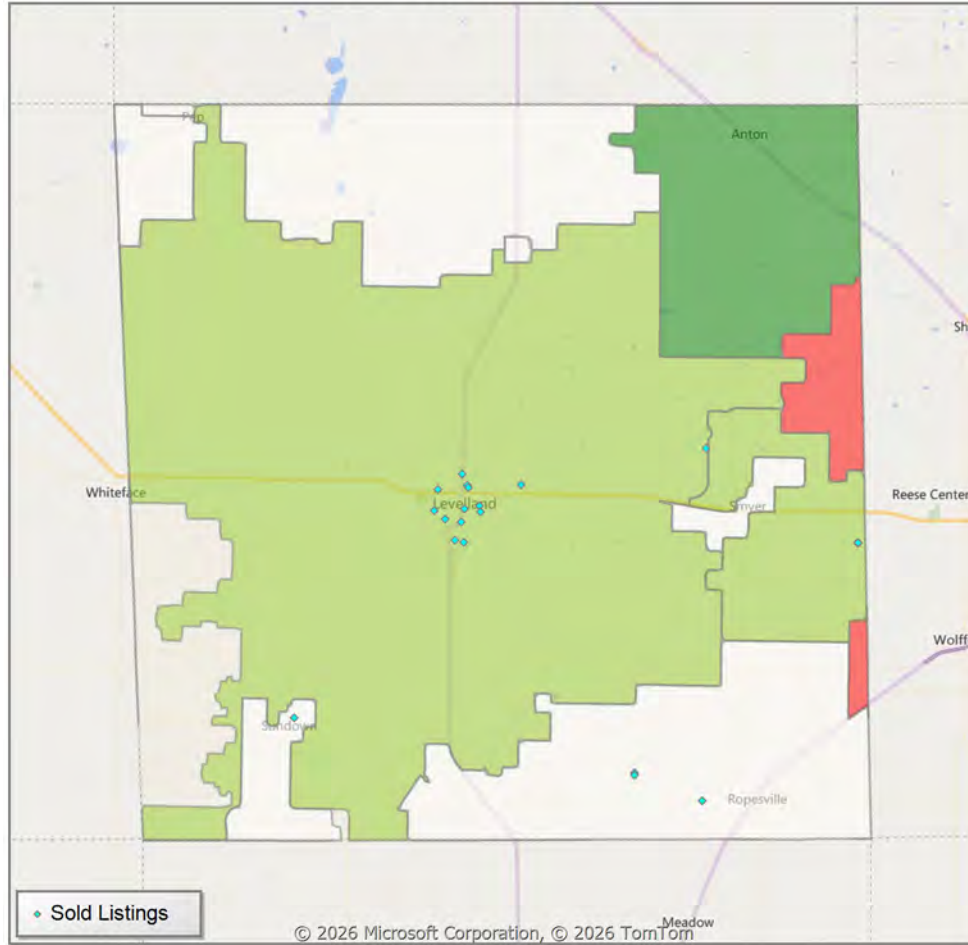
Months Inventory



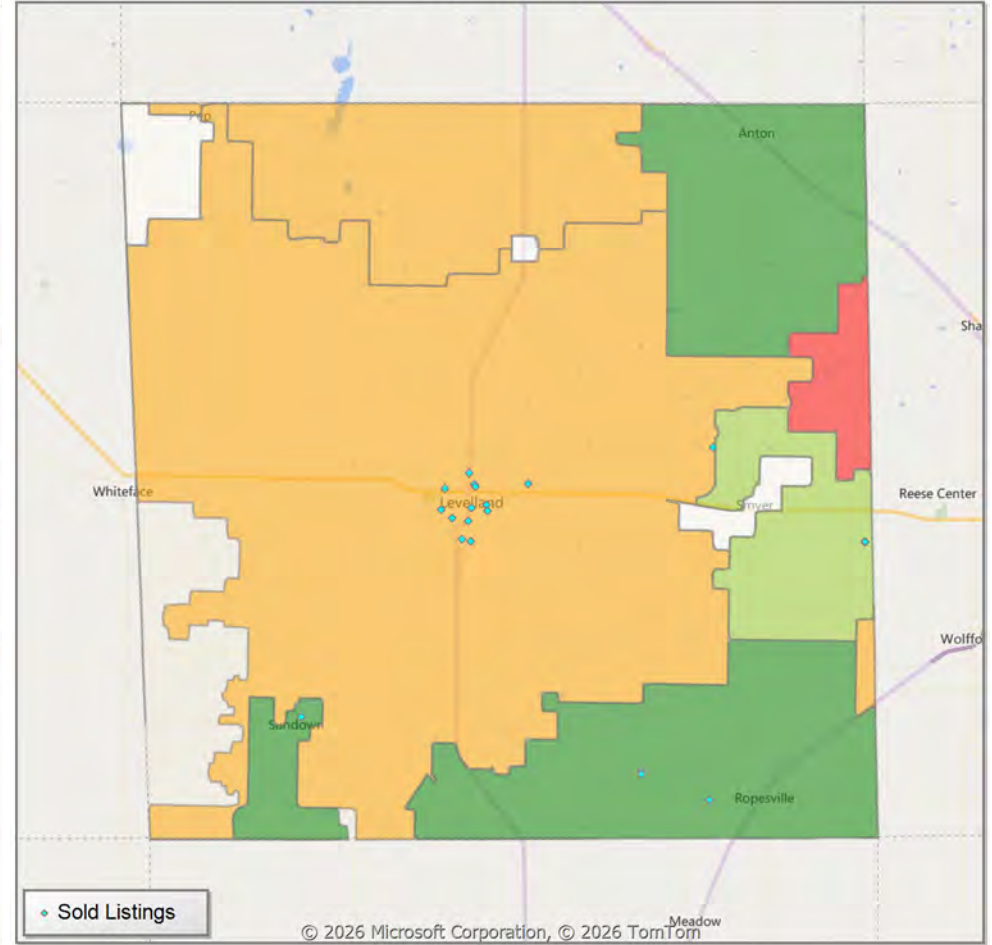
* Closed Sale counts for most recent 3 months are Preliminary.

Comparison By Zip Code* in Hockley County

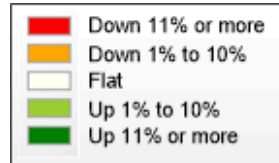
Residential Closed Sales
YoY Percentage Change**



Residential Avg Close Price Per SqFt
YoY Percentage Change**

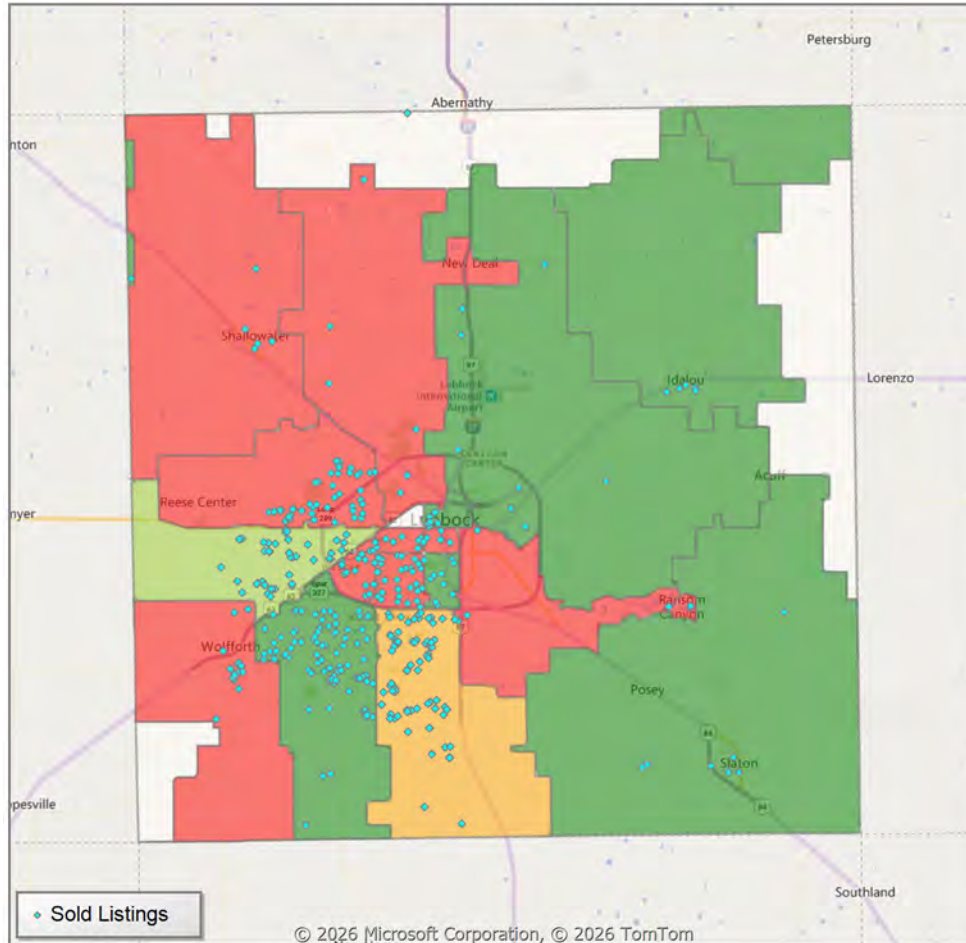


* US Census Zip Code Tabulation Area
** Residential includes Single Family, Condominium and Townhouse.

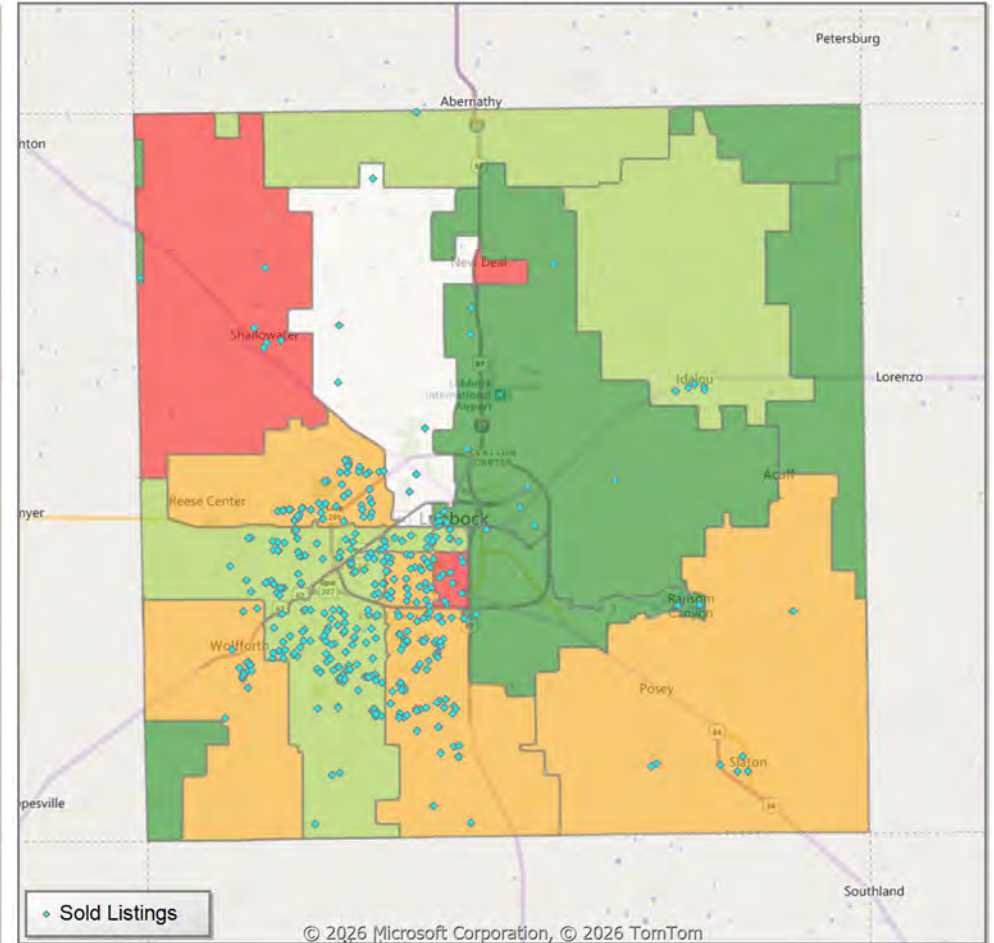


Comparison By Zip Code* in Lubbock County

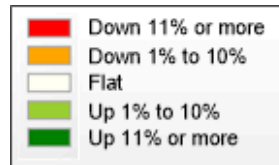
Residential Closed Sales
YoY Percentage Change**



Residential Avg Close Price Per SqFt
YoY Percentage Change**

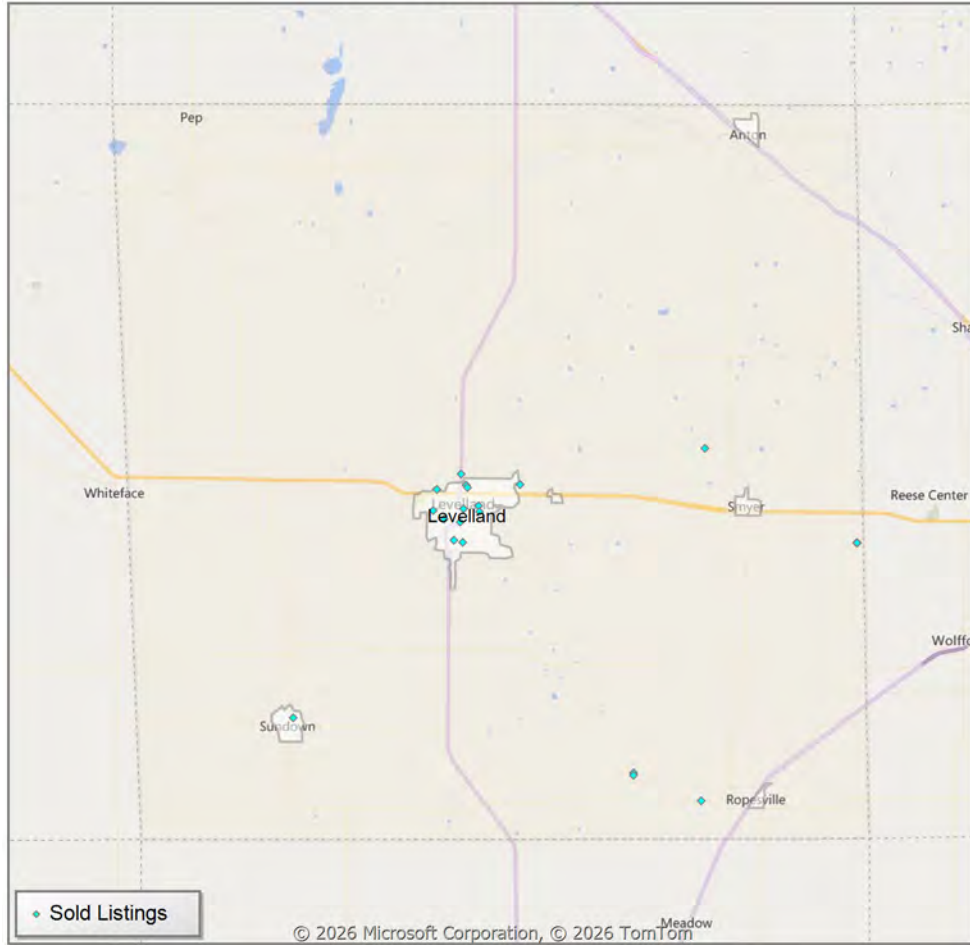


* US Census Zip Code Tabulation Area
** Residential includes Single Family, Condominium and Townhouse.

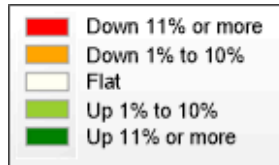
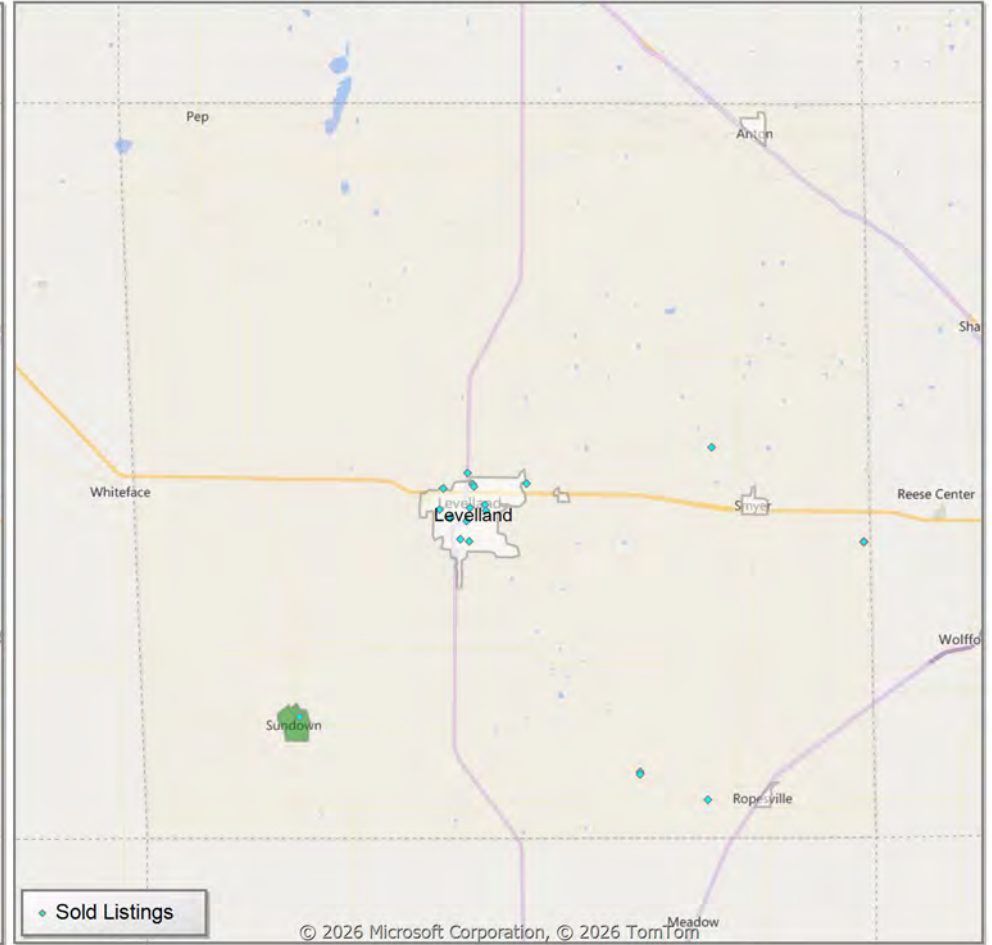


Comparison By Local Market Area* in Hockley County

Residential Closed Sales
YoY Percentage Change**



Residential Avg Close Price Per SqFt
YoY Percentage Change**

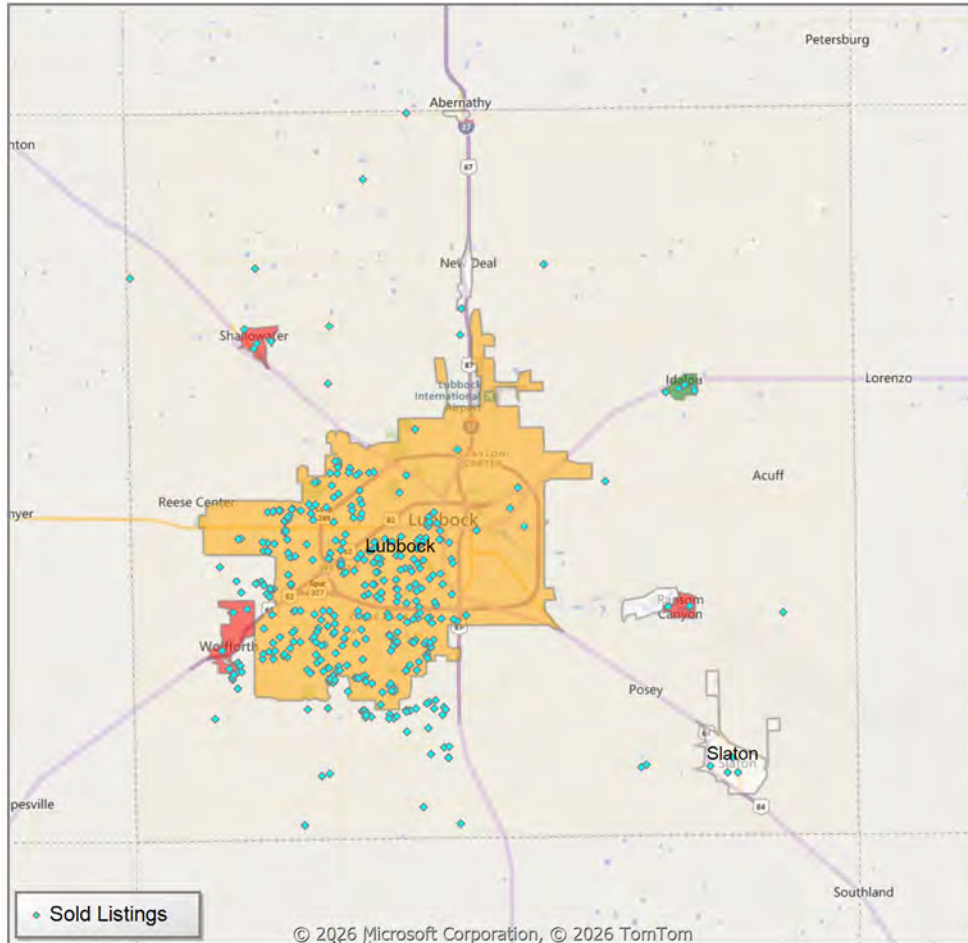


* Census Place Group

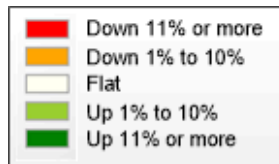
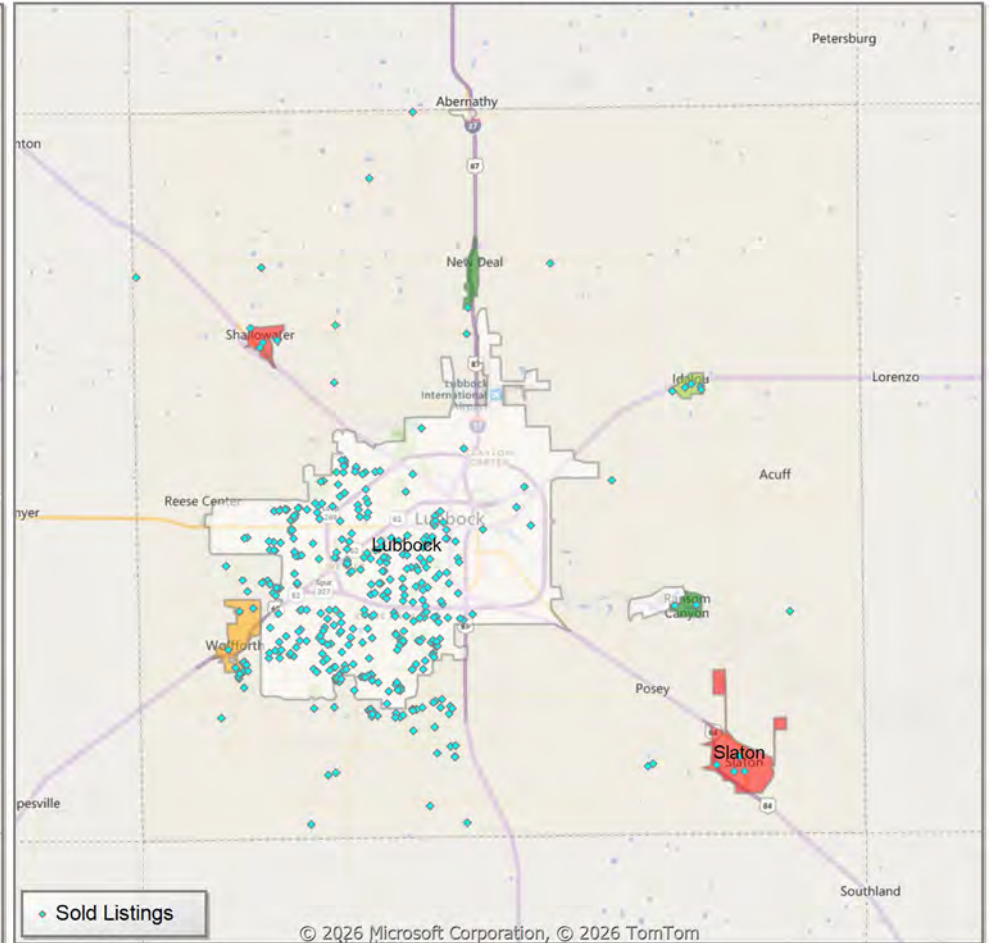
** Residential includes Single Family, Condominium and Townhouse.

Comparison By Local Market Area* in Lubbock County

Residential Closed Sales
YoY Percentage Change**



Residential Avg Close Price Per SqFt
YoY Percentage Change**



* Census Place Group

** Residential includes Single Family, Condominium and Townhouse.

Market Analysis By Local Market Area*: Abernathy

Property Type	Closed Sales**	YoY%	Dollar Volume	YoY%	Average Price	YoY%	Median Price	YoY%	Price/Sqft	YoY%	DOM	New Listings	Active Listings	Pending Sales	Months Inventory	Close To OLP
All(New and Existing)																
Residential (SF/COND/TH)	-	0.0%	-	0.0%	-	0.0%	-	0.0%	-	0.0%	-	1	7	2	3.0	0.0%
YTD:	6	50.0%	\$1,120,500	172.8%	\$186,750	81.8%	\$197,500	105.1%	\$119	78.8%	55	7	7	5		95.9%
Single Family	-	0.0%	-	0.0%	-	0.0%	-	0.0%	-	0.0%	-	1	7	2	3.0	0.0%
YTD:	6	50.0%	\$1,120,500	172.8%	\$186,750	81.8%	\$197,500	105.1%	\$119	78.8%	55	7	7	5		95.9%
Townhouse	-	0.0%	-	0.0%	-	0.0%	-	0.0%	-	0.0%	-	-	-	-	-	0.0%
YTD:	-	0.0%	-	0.0%	-	0.0%	-	0.0%	-	0.0%	-	-	-	-	-	0.0%
Condominium	-	0.0%	-	0.0%	-	0.0%	-	0.0%	-	0.0%	-	-	-	-	-	0.0%
YTD:	-	0.0%	-	0.0%	-	0.0%	-	0.0%	-	0.0%	-	-	-	-	-	0.0%
Existing Home																
Residential (SF/COND/TH)	-	0.0%	-	0.0%	-	0.0%	-	0.0%	-	0.0%	-	1	6	2	2.6	0.0%
YTD:	6	50.0%	\$1,120,500	172.8%	\$186,750	81.8%	\$197,500	105.1%	\$119	78.8%	55	5	6	5		95.9%
Single Family	-	0.0%	-	0.0%	-	0.0%	-	0.0%	-	0.0%	-	1	6	2	2.6	0.0%
YTD:	6	50.0%	\$1,120,500	172.8%	\$186,750	81.8%	\$197,500	105.1%	\$119	78.8%	55	5	6	5		95.9%
Townhouse	-	0.0%	-	0.0%	-	0.0%	-	0.0%	-	0.0%	-	-	-	-	-	0.0%
YTD:	-	0.0%	-	0.0%	-	0.0%	-	0.0%	-	0.0%	-	-	-	-	-	0.0%
Condominium	-	0.0%	-	0.0%	-	0.0%	-	0.0%	-	0.0%	-	-	-	-	-	0.0%
YTD:	-	0.0%	-	0.0%	-	0.0%	-	0.0%	-	0.0%	-	-	-	-	-	0.0%
New Construction																
Residential (SF/COND/TH)	-	0.0%	-	0.0%	-	0.0%	-	0.0%	-	0.0%	-	-	1	-	-	0.0%
YTD:	-	0.0%	-	0.0%	-	0.0%	-	0.0%	-	0.0%	-	2	1	-	-	0.0%
Single Family	-	0.0%	-	0.0%	-	0.0%	-	0.0%	-	0.0%	-	-	1	-	-	0.0%
YTD:	-	0.0%	-	0.0%	-	0.0%	-	0.0%	-	0.0%	-	2	1	-	-	0.0%
Townhouse	-	0.0%	-	0.0%	-	0.0%	-	0.0%	-	0.0%	-	-	-	-	-	0.0%
YTD:	-	0.0%	-	0.0%	-	0.0%	-	0.0%	-	0.0%	-	-	-	-	-	0.0%
Condominium	-	0.0%	-	0.0%	-	0.0%	-	0.0%	-	0.0%	-	-	-	-	-	0.0%
YTD:	-	0.0%	-	0.0%	-	0.0%	-	0.0%	-	0.0%	-	-	-	-	-	0.0%

* Local Market Area Code: 2; Type: Census Place Group
 ** Closed Sale counts for most recent 3 months are Preliminary.

Market Analysis By Local Market Area*: Anton

Property Type	Closed Sales**	YoY%	Dollar Volume	YoY%	Average Price	YoY%	Median Price	YoY%	Price/Sqft	YoY%	DOM	New Listings	Active Listings	Pending Sales	Months Inventory	Close To OLP
All(New and Existing)																
Residential (SF/COND/TH)	-	0.0%	-	0.0%	-	0.0%	-	0.0%	-	0.0%	-	-	1	-	1.1	0.0%
YTD:	-	-100.0%	-	-100.0%	-	-100.0%	-	-100.0%	-	-100.0%	-	1	1	-		0.0%
Single Family	-	0.0%	-	0.0%	-	0.0%	-	0.0%	-	0.0%	-	-	1	-	1.1	0.0%
YTD:	-	-100.0%	-	-100.0%	-	-100.0%	-	-100.0%	-	-100.0%	-	1	1	-		0.0%
Townhouse	-	0.0%	-	0.0%	-	0.0%	-	0.0%	-	0.0%	-	-	-	-	-	0.0%
YTD:	-	0.0%	-	0.0%	-	0.0%	-	0.0%	-	0.0%	-	-	-	-	-	0.0%
Condominium	-	0.0%	-	0.0%	-	0.0%	-	0.0%	-	0.0%	-	-	-	-	-	0.0%
YTD:	-	0.0%	-	0.0%	-	0.0%	-	0.0%	-	0.0%	-	-	-	-	-	0.0%
Existing Home																
Residential (SF/COND/TH)	-	0.0%	-	0.0%	-	0.0%	-	0.0%	-	0.0%	-	-	1	-	1.1	0.0%
YTD:	-	-100.0%	-	-100.0%	-	-100.0%	-	-100.0%	-	-100.0%	-	1	1	-		0.0%
Single Family	-	0.0%	-	0.0%	-	0.0%	-	0.0%	-	0.0%	-	-	1	-	1.1	0.0%
YTD:	-	-100.0%	-	-100.0%	-	-100.0%	-	-100.0%	-	-100.0%	-	1	1	-		0.0%
Townhouse	-	0.0%	-	0.0%	-	0.0%	-	0.0%	-	0.0%	-	-	-	-	-	0.0%
YTD:	-	0.0%	-	0.0%	-	0.0%	-	0.0%	-	0.0%	-	-	-	-	-	0.0%
Condominium	-	0.0%	-	0.0%	-	0.0%	-	0.0%	-	0.0%	-	-	-	-	-	0.0%
YTD:	-	0.0%	-	0.0%	-	0.0%	-	0.0%	-	0.0%	-	-	-	-	-	0.0%
New Construction																
Residential (SF/COND/TH)	-	0.0%	-	0.0%	-	0.0%	-	0.0%	-	0.0%	-	-	-	-	-	0.0%
YTD:	-	0.0%	-	0.0%	-	0.0%	-	0.0%	-	0.0%	-	-	-	-	-	0.0%
Single Family	-	0.0%	-	0.0%	-	0.0%	-	0.0%	-	0.0%	-	-	-	-	-	0.0%
YTD:	-	0.0%	-	0.0%	-	0.0%	-	0.0%	-	0.0%	-	-	-	-	-	0.0%
Townhouse	-	0.0%	-	0.0%	-	0.0%	-	0.0%	-	0.0%	-	-	-	-	-	0.0%
YTD:	-	0.0%	-	0.0%	-	0.0%	-	0.0%	-	0.0%	-	-	-	-	-	0.0%
Condominium	-	0.0%	-	0.0%	-	0.0%	-	0.0%	-	0.0%	-	-	-	-	-	0.0%
YTD:	-	0.0%	-	0.0%	-	0.0%	-	0.0%	-	0.0%	-	-	-	-	-	0.0%

* Local Market Area Code: 1014; Type: Census Place Group
 ** Closed Sale counts for most recent 3 months are Preliminary.

Market Analysis By Local Market Area*: Buffalo Springs

Property Type	Closed Sales**	YoY%	Dollar Volume	YoY%	Average Price	YoY%	Median Price	YoY%	Price/Sqft	YoY%	DOM	New Listings	Active Listings	Pending Sales	Months Inventory	Close To OLP
All(New and Existing)																
Residential (SF/COND/TH)	-	0.0%	-	0.0%	-	0.0%	-	0.0%	-	0.0%	-	-	4	2	2.8	0.0%
YTD:	2	100.0%	\$920,000	100.0%	\$460,000	100.0%	\$460,000	100.0%	\$238	100.0%	47	6	7	3		97.4%
Single Family	-	0.0%	-	0.0%	-	0.0%	-	0.0%	-	0.0%	-	-	4	2	2.8	0.0%
YTD:	2	100.0%	\$920,000	100.0%	\$460,000	100.0%	\$460,000	100.0%	\$238	100.0%	47	6	7	3		97.4%
Townhouse	-	0.0%	-	0.0%	-	0.0%	-	0.0%	-	0.0%	-	-	-	-	-	0.0%
YTD:	-	0.0%	-	0.0%	-	0.0%	-	0.0%	-	0.0%	-	-	-	-	-	0.0%
Condominium	-	0.0%	-	0.0%	-	0.0%	-	0.0%	-	0.0%	-	-	-	-	-	0.0%
YTD:	-	0.0%	-	0.0%	-	0.0%	-	0.0%	-	0.0%	-	-	-	-	-	0.0%
Existing Home																
Residential (SF/COND/TH)	-	0.0%	-	0.0%	-	0.0%	-	0.0%	-	0.0%	-	-	4	2	2.8	0.0%
YTD:	2	100.0%	\$920,000	100.0%	\$460,000	100.0%	\$460,000	100.0%	\$238	100.0%	47	6	7	3		97.4%
Single Family	-	0.0%	-	0.0%	-	0.0%	-	0.0%	-	0.0%	-	-	4	2	2.8	0.0%
YTD:	2	100.0%	\$920,000	100.0%	\$460,000	100.0%	\$460,000	100.0%	\$238	100.0%	47	6	7	3		97.4%
Townhouse	-	0.0%	-	0.0%	-	0.0%	-	0.0%	-	0.0%	-	-	-	-	-	0.0%
YTD:	-	0.0%	-	0.0%	-	0.0%	-	0.0%	-	0.0%	-	-	-	-	-	0.0%
Condominium	-	0.0%	-	0.0%	-	0.0%	-	0.0%	-	0.0%	-	-	-	-	-	0.0%
YTD:	-	0.0%	-	0.0%	-	0.0%	-	0.0%	-	0.0%	-	-	-	-	-	0.0%
New Construction																
Residential (SF/COND/TH)	-	0.0%	-	0.0%	-	0.0%	-	0.0%	-	0.0%	-	-	-	-	-	0.0%
YTD:	-	0.0%	-	0.0%	-	0.0%	-	0.0%	-	0.0%	-	-	-	-	-	0.0%
Single Family	-	0.0%	-	0.0%	-	0.0%	-	0.0%	-	0.0%	-	-	-	-	-	0.0%
YTD:	-	0.0%	-	0.0%	-	0.0%	-	0.0%	-	0.0%	-	-	-	-	-	0.0%
Townhouse	-	0.0%	-	0.0%	-	0.0%	-	0.0%	-	0.0%	-	-	-	-	-	0.0%
YTD:	-	0.0%	-	0.0%	-	0.0%	-	0.0%	-	0.0%	-	-	-	-	-	0.0%
Condominium	-	0.0%	-	0.0%	-	0.0%	-	0.0%	-	0.0%	-	-	-	-	-	0.0%
YTD:	-	0.0%	-	0.0%	-	0.0%	-	0.0%	-	0.0%	-	-	-	-	-	0.0%

* Local Market Area Code: 135; Type: Census Place Group
 ** Closed Sale counts for most recent 3 months are Preliminary.

Market Analysis By Local Market Area*: Idalou

Property Type	Closed Sales**	YoY%	Dollar Volume	YoY%	Average Price	YoY%	Median Price	YoY%	Price/Sqft	YoY%	DOM	New Listings	Active Listings	Pending Sales	Months Inventory	Close To OLP
All(New and Existing)																
Residential (SF/COND/TH)	5	400.0%	\$1,005,000	403.8%	\$201,000	0.8%	\$220,000	10.3%	\$140	8.8%	17	3	7	1	3.8	98.5%
YTD:	5	150.0%	\$1,005,000	152.8%	\$201,000	1.1%	\$220,000	10.7%	\$140	16.6%	17	12	7	5		98.5%
Single Family	5	400.0%	\$1,005,000	403.8%	\$201,000	0.8%	\$220,000	10.3%	\$140	8.8%	17	3	7	1	3.8	98.5%
YTD:	5	150.0%	\$1,005,000	152.8%	\$201,000	1.1%	\$220,000	10.7%	\$140	16.6%	17	12	7	5		98.5%
Townhouse	-	0.0%	-	0.0%	-	0.0%	-	0.0%	-	0.0%	-	-	-	-	-	0.0%
YTD:	-	0.0%	-	0.0%	-	0.0%	-	0.0%	-	0.0%	-	-	-	-	-	0.0%
Condominium	-	0.0%	-	0.0%	-	0.0%	-	0.0%	-	0.0%	-	-	-	-	-	0.0%
YTD:	-	0.0%	-	0.0%	-	0.0%	-	0.0%	-	0.0%	-	-	-	-	-	0.0%
Existing Home																
Residential (SF/COND/TH)	5	400.0%	\$1,005,000	403.8%	\$201,000	0.8%	\$220,000	10.3%	\$140	8.8%	17	3	7	1	3.8	98.5%
YTD:	5	150.0%	\$1,005,000	152.8%	\$201,000	1.1%	\$220,000	10.7%	\$140	16.6%	17	12	7	5		98.5%
Single Family	5	400.0%	\$1,005,000	403.8%	\$201,000	0.8%	\$220,000	10.3%	\$140	8.8%	17	3	7	1	3.8	98.5%
YTD:	5	150.0%	\$1,005,000	152.8%	\$201,000	1.1%	\$220,000	10.7%	\$140	16.6%	17	12	7	5		98.5%
Townhouse	-	0.0%	-	0.0%	-	0.0%	-	0.0%	-	0.0%	-	-	-	-	-	0.0%
YTD:	-	0.0%	-	0.0%	-	0.0%	-	0.0%	-	0.0%	-	-	-	-	-	0.0%
Condominium	-	0.0%	-	0.0%	-	0.0%	-	0.0%	-	0.0%	-	-	-	-	-	0.0%
YTD:	-	0.0%	-	0.0%	-	0.0%	-	0.0%	-	0.0%	-	-	-	-	-	0.0%
New Construction																
Residential (SF/COND/TH)	-	0.0%	-	0.0%	-	0.0%	-	0.0%	-	0.0%	-	-	-	-	-	0.0%
YTD:	-	0.0%	-	0.0%	-	0.0%	-	0.0%	-	0.0%	-	-	-	-	-	0.0%
Single Family	-	0.0%	-	0.0%	-	0.0%	-	0.0%	-	0.0%	-	-	-	-	-	0.0%
YTD:	-	0.0%	-	0.0%	-	0.0%	-	0.0%	-	0.0%	-	-	-	-	-	0.0%
Townhouse	-	0.0%	-	0.0%	-	0.0%	-	0.0%	-	0.0%	-	-	-	-	-	0.0%
YTD:	-	0.0%	-	0.0%	-	0.0%	-	0.0%	-	0.0%	-	-	-	-	-	0.0%
Condominium	-	0.0%	-	0.0%	-	0.0%	-	0.0%	-	0.0%	-	-	-	-	-	0.0%
YTD:	-	0.0%	-	0.0%	-	0.0%	-	0.0%	-	0.0%	-	-	-	-	-	0.0%

* Local Market Area Code: 456; Type: Census Place Group
 ** Closed Sale counts for most recent 3 months are Preliminary.

Market Analysis By Local Market Area*: Levelland

Property Type	Closed Sales**	YoY%	Dollar Volume	YoY%	Average Price	YoY%	Median Price	YoY%	Price/Sqft	YoY%	DOM	New Listings	Active Listings	Pending Sales	Months Inventory	Close To OLP
All(New and Existing)																
Residential (SF/COND/TH)	11	0.0%	\$2,006,600	-19.0%	\$182,418	-19.0%	\$170,000	-24.4%	\$102	-0.7%	60	15	35	16	4.0	95.0%
YTD:	24	0.0%	\$4,238,600	-20.4%	\$176,608	-20.4%	\$167,500	-26.0%	\$95	-5.9%	78	44	38	34		91.0%
Single Family	11	0.0%	\$2,006,600	-19.0%	\$182,418	-19.0%	\$170,000	-24.4%	\$102	-0.7%	60	15	35	16	4.0	95.0%
YTD:	24	0.0%	\$4,238,600	-20.4%	\$176,608	-20.4%	\$167,500	-26.0%	\$95	-5.9%	78	44	38	34		91.0%
Townhouse	-	0.0%	-	0.0%	-	0.0%	-	0.0%	-	0.0%	-	-	-	-	-	0.0%
YTD:	-	0.0%	-	0.0%	-	0.0%	-	0.0%	-	0.0%	-	-	-	-	-	0.0%
Condominium	-	0.0%	-	0.0%	-	0.0%	-	0.0%	-	0.0%	-	-	-	-	-	0.0%
YTD:	-	0.0%	-	0.0%	-	0.0%	-	0.0%	-	0.0%	-	-	-	-	-	0.0%
Existing Home																
Residential (SF/COND/TH)	11	0.0%	\$2,006,600	-19.0%	\$182,418	-19.0%	\$170,000	-24.4%	\$102	-0.7%	60	14	34	16	4.0	95.0%
YTD:	24	0.0%	\$4,238,600	-20.4%	\$176,608	-20.4%	\$167,500	-26.0%	\$95	-5.9%	78	43	38	34		91.0%
Single Family	11	0.0%	\$2,006,600	-19.0%	\$182,418	-19.0%	\$170,000	-24.4%	\$102	-0.7%	60	14	34	16	4.0	95.0%
YTD:	24	0.0%	\$4,238,600	-20.4%	\$176,608	-20.4%	\$167,500	-26.0%	\$95	-5.9%	78	43	38	34		91.0%
Townhouse	-	0.0%	-	0.0%	-	0.0%	-	0.0%	-	0.0%	-	-	-	-	-	0.0%
YTD:	-	0.0%	-	0.0%	-	0.0%	-	0.0%	-	0.0%	-	-	-	-	-	0.0%
Condominium	-	0.0%	-	0.0%	-	0.0%	-	0.0%	-	0.0%	-	-	-	-	-	0.0%
YTD:	-	0.0%	-	0.0%	-	0.0%	-	0.0%	-	0.0%	-	-	-	-	-	0.0%
New Construction																
Residential (SF/COND/TH)	-	0.0%	-	0.0%	-	0.0%	-	0.0%	-	0.0%	-	1	1	-	12.0	0.0%
YTD:	-	0.0%	-	0.0%	-	0.0%	-	0.0%	-	0.0%	-	1	1	-		0.0%
Single Family	-	0.0%	-	0.0%	-	0.0%	-	0.0%	-	0.0%	-	1	1	-	12.0	0.0%
YTD:	-	0.0%	-	0.0%	-	0.0%	-	0.0%	-	0.0%	-	1	1	-		0.0%
Townhouse	-	0.0%	-	0.0%	-	0.0%	-	0.0%	-	0.0%	-	-	-	-	-	0.0%
YTD:	-	0.0%	-	0.0%	-	0.0%	-	0.0%	-	0.0%	-	-	-	-	-	0.0%
Condominium	-	0.0%	-	0.0%	-	0.0%	-	0.0%	-	0.0%	-	-	-	-	-	0.0%
YTD:	-	0.0%	-	0.0%	-	0.0%	-	0.0%	-	0.0%	-	-	-	-	-	0.0%

* Local Market Area Code: 220; Type: Census Place Group
 ** Closed Sale counts for most recent 3 months are Preliminary.

Market Analysis By Local Market Area*: Lubbock

Property Type	Closed Sales**	YoY%	Dollar Volume	YoY%	Average Price	YoY%	Median Price	YoY%	Price/Sqft	YoY%	DOM	New Listings	Active Listings	Pending Sales	Months Inventory	Close To OLP
All(New and Existing)																
Residential (SF/COND/TH)	314	-5.7%	\$83,969,323	-1.0%	\$267,418	5.0%	\$225,000	1.1%	\$133	0.2%	50	599	1,004	378	3.4	95.1%
YTD:	738	-5.0%	\$195,298,652	-6.0%	\$264,632	-1.1%	\$225,000	-0.2%	\$132	-0.8%	55	1,572	977	963		94.6%
Single Family	305	-6.4%	\$82,756,092	-1.0%	\$271,331	5.8%	\$230,000	3.1%	\$133	0.5%	48	585	952	366	3.3	95.1%
YTD:	725	-4.7%	\$193,187,703	-5.7%	\$266,466	-1.0%	\$225,000	-1.8%	\$133	-0.9%	54	1,524	929	941		94.6%
Townhouse	3	-40.0%	\$510,800	-47.6%	\$170,267	-12.6%	\$150,000	-25.7%	\$112	-10.8%	72	13	49	11	10.7	99.2%
YTD:	4	-63.6%	\$748,800	-66.5%	\$187,200	-7.8%	\$188,400	-6.7%	\$115	-4.8%	55	42	43	13		99.4%
Condominium	6	200.0%	\$737,650	222.1%	\$122,942	7.4%	\$109,500	-4.4%	\$116	-0.4%	97	1	3	1	1.3	92.9%
YTD:	9	80.0%	\$1,378,650	67.3%	\$153,183	-7.1%	\$127,500	6.3%	\$130	-0.7%	76	6	4	9		94.2%
Existing Home																
Residential (SF/COND/TH)	265	3.9%	\$68,244,601	9.6%	\$257,527	5.4%	\$220,000	4.8%	\$128	1.7%	48	536	914	317	3.7	95.0%
YTD:	599	-1.8%	\$152,826,992	-5.0%	\$255,137	-3.2%	\$217,000	-2.0%	\$126	-1.3%	54	1,402	873	788		94.6%
Single Family	256	3.2%	\$67,030,645	9.7%	\$261,838	6.3%	\$220,000	2.9%	\$128	2.0%	46	522	863	306	3.6	95.0%
YTD:	586	-1.4%	\$150,716,003	-4.5%	\$257,195	-3.2%	\$218,000	-2.0%	\$126	-1.3%	54	1,356	827	767		94.6%
Townhouse	3	-40.0%	\$510,800	-47.6%	\$170,267	-12.6%	\$150,000	-25.7%	\$112	-10.8%	72	13	48	10	11.8	99.2%
YTD:	4	-63.6%	\$748,800	-66.5%	\$187,200	-7.8%	\$188,400	-6.7%	\$115	-4.8%	55	40	41	12		99.4%
Condominium	6	200.0%	\$737,650	222.1%	\$122,942	7.4%	\$109,500	-4.4%	\$116	-0.4%	97	1	3	1	1.3	92.9%
YTD:	9	80.0%	\$1,378,650	67.3%	\$153,183	-7.1%	\$127,500	6.3%	\$130	-0.7%	76	6	4	9		94.2%
New Construction																
Residential (SF/COND/TH)	49	-37.2%	\$15,698,551	-30.4%	\$320,379	10.9%	\$264,450	10.0%	\$161	3.3%	60	63	90	61	2.1	95.5%
YTD:	139	-16.8%	\$42,436,362	-9.8%	\$305,298	8.4%	\$244,000	2.1%	\$160	3.2%	57	170	103	175		94.5%
Single Family	49	-37.2%	\$15,698,551	-30.4%	\$320,379	10.9%	\$264,450	10.0%	\$161	3.3%	60	63	89	60	2.1	95.5%
YTD:	139	-16.8%	\$42,436,362	-9.8%	\$305,298	8.4%	\$244,000	2.1%	\$160	3.2%	57	168	102	174		94.5%
Townhouse	-	0.0%	-	0.0%	-	0.0%	-	0.0%	-	0.0%	-	-	1	1	2.0	0.0%
YTD:	-	0.0%	-	0.0%	-	0.0%	-	0.0%	-	0.0%	-	2	1	1		0.0%
Condominium	-	0.0%	-	0.0%	-	0.0%	-	0.0%	-	0.0%	-	-	-	-	-	0.0%
YTD:	-	0.0%	-	0.0%	-	0.0%	-	0.0%	-	0.0%	-	-	-	-		0.0%

* Local Market Area Code: 596; Type: Census Place Group
 ** Closed Sale counts for most recent 3 months are Preliminary.

Market Analysis By Local Market Area*: New Deal

Property Type	Closed Sales**	YoY%	Dollar Volume	YoY%	Average Price	YoY%	Median Price	YoY%	Price/Sqft	YoY%	DOM	New Listings	Active Listings	Pending Sales	Months Inventory	Close To OLP
All(New and Existing)																
Residential (SF/COND/TH)	1	0.0%	\$529,000	277.9%	\$529,000	277.9%	\$529,000	277.9%	\$294	164.5%	1	1	-	-	-	98.0%
YTD:	1	0.0%	\$529,000	277.9%	\$529,000	277.9%	\$529,000	277.9%	\$294	164.5%	1	2	1	1	-	98.0%
Single Family	1	0.0%	\$529,000	277.9%	\$529,000	277.9%	\$529,000	277.9%	\$294	164.5%	1	1	-	-	-	98.0%
YTD:	1	0.0%	\$529,000	277.9%	\$529,000	277.9%	\$529,000	277.9%	\$294	164.5%	1	2	1	1	-	98.0%
Townhouse	-	0.0%	-	0.0%	-	0.0%	-	0.0%	-	0.0%	-	-	-	-	-	0.0%
YTD:	-	0.0%	-	0.0%	-	0.0%	-	0.0%	-	0.0%	-	-	-	-	-	0.0%
Condominium	-	0.0%	-	0.0%	-	0.0%	-	0.0%	-	0.0%	-	-	-	-	-	0.0%
YTD:	-	0.0%	-	0.0%	-	0.0%	-	0.0%	-	0.0%	-	-	-	-	-	0.0%
Existing Home																
Residential (SF/COND/TH)	1	0.0%	\$529,000	277.9%	\$529,000	277.9%	\$529,000	277.9%	\$294	164.5%	1	1	-	-	-	98.0%
YTD:	1	0.0%	\$529,000	277.9%	\$529,000	277.9%	\$529,000	277.9%	\$294	164.5%	1	2	1	1	-	98.0%
Single Family	1	0.0%	\$529,000	277.9%	\$529,000	277.9%	\$529,000	277.9%	\$294	164.5%	1	1	-	-	-	98.0%
YTD:	1	0.0%	\$529,000	277.9%	\$529,000	277.9%	\$529,000	277.9%	\$294	164.5%	1	2	1	1	-	98.0%
Townhouse	-	0.0%	-	0.0%	-	0.0%	-	0.0%	-	0.0%	-	-	-	-	-	0.0%
YTD:	-	0.0%	-	0.0%	-	0.0%	-	0.0%	-	0.0%	-	-	-	-	-	0.0%
Condominium	-	0.0%	-	0.0%	-	0.0%	-	0.0%	-	0.0%	-	-	-	-	-	0.0%
YTD:	-	0.0%	-	0.0%	-	0.0%	-	0.0%	-	0.0%	-	-	-	-	-	0.0%
New Construction																
Residential (SF/COND/TH)	-	0.0%	-	0.0%	-	0.0%	-	0.0%	-	0.0%	-	-	-	-	-	0.0%
YTD:	-	0.0%	-	0.0%	-	0.0%	-	0.0%	-	0.0%	-	-	-	-	-	0.0%
Single Family	-	0.0%	-	0.0%	-	0.0%	-	0.0%	-	0.0%	-	-	-	-	-	0.0%
YTD:	-	0.0%	-	0.0%	-	0.0%	-	0.0%	-	0.0%	-	-	-	-	-	0.0%
Townhouse	-	0.0%	-	0.0%	-	0.0%	-	0.0%	-	0.0%	-	-	-	-	-	0.0%
YTD:	-	0.0%	-	0.0%	-	0.0%	-	0.0%	-	0.0%	-	-	-	-	-	0.0%
Condominium	-	0.0%	-	0.0%	-	0.0%	-	0.0%	-	0.0%	-	-	-	-	-	0.0%
YTD:	-	0.0%	-	0.0%	-	0.0%	-	0.0%	-	0.0%	-	-	-	-	-	0.0%

* Local Market Area Code: 700; Type: Census Place Group
 ** Closed Sale counts for most recent 3 months are Preliminary.

Market Analysis By Local Market Area*: Ransom Canyon

Property Type	Closed Sales**	YoY%	Dollar Volume	YoY%	Average Price	YoY%	Median Price	YoY%	Price/Sqft	YoY%	DOM	New Listings	Active Listings	Pending Sales	Months Inventory	Close To OLP
All(New and Existing)																
Residential (SF/COND/TH)	3	-62.5%	\$1,878,500	-37.7%	\$626,167	66.2%	\$726,500	97.7%	\$223	37.8%	86	7	16	4	8.3	85.6%
YTD:	7	-36.4%	\$3,880,944	-1.6%	\$554,421	54.6%	\$465,000	29.2%	\$181	20.7%	113	18	13	8		85.6%
Single Family	3	-62.5%	\$1,878,500	-37.7%	\$626,167	66.2%	\$726,500	97.7%	\$223	37.8%	86	7	16	4	8.3	85.6%
YTD:	7	-36.4%	\$3,880,944	-1.6%	\$554,421	54.6%	\$465,000	29.2%	\$181	20.7%	113	18	13	8		85.6%
Townhouse	-	0.0%	-	0.0%	-	0.0%	-	0.0%	-	0.0%	-	-	-	-	-	0.0%
YTD:	-	0.0%	-	0.0%	-	0.0%	-	0.0%	-	0.0%	-	-	-	-	-	0.0%
Condominium	-	0.0%	-	0.0%	-	0.0%	-	0.0%	-	0.0%	-	-	-	-	-	0.0%
YTD:	-	0.0%	-	0.0%	-	0.0%	-	0.0%	-	0.0%	-	-	-	-	-	0.0%
Existing Home																
Residential (SF/COND/TH)	3	-62.5%	\$1,878,500	-37.7%	\$626,167	66.2%	\$726,500	97.7%	\$223	37.8%	86	7	16	4	8.3	85.6%
YTD:	7	-36.4%	\$3,880,944	-1.6%	\$554,421	54.6%	\$465,000	29.2%	\$181	20.7%	113	18	13	8		85.6%
Single Family	3	-62.5%	\$1,878,500	-37.7%	\$626,167	66.2%	\$726,500	97.7%	\$223	37.8%	86	7	16	4	8.3	85.6%
YTD:	7	-36.4%	\$3,880,944	-1.6%	\$554,421	54.6%	\$465,000	29.2%	\$181	20.7%	113	18	13	8		85.6%
Townhouse	-	0.0%	-	0.0%	-	0.0%	-	0.0%	-	0.0%	-	-	-	-	-	0.0%
YTD:	-	0.0%	-	0.0%	-	0.0%	-	0.0%	-	0.0%	-	-	-	-	-	0.0%
Condominium	-	0.0%	-	0.0%	-	0.0%	-	0.0%	-	0.0%	-	-	-	-	-	0.0%
YTD:	-	0.0%	-	0.0%	-	0.0%	-	0.0%	-	0.0%	-	-	-	-	-	0.0%
New Construction																
Residential (SF/COND/TH)	-	0.0%	-	0.0%	-	0.0%	-	0.0%	-	0.0%	-	-	-	-	-	0.0%
YTD:	-	0.0%	-	0.0%	-	0.0%	-	0.0%	-	0.0%	-	-	-	-	-	0.0%
Single Family	-	0.0%	-	0.0%	-	0.0%	-	0.0%	-	0.0%	-	-	-	-	-	0.0%
YTD:	-	0.0%	-	0.0%	-	0.0%	-	0.0%	-	0.0%	-	-	-	-	-	0.0%
Townhouse	-	0.0%	-	0.0%	-	0.0%	-	0.0%	-	0.0%	-	-	-	-	-	0.0%
YTD:	-	0.0%	-	0.0%	-	0.0%	-	0.0%	-	0.0%	-	-	-	-	-	0.0%
Condominium	-	0.0%	-	0.0%	-	0.0%	-	0.0%	-	0.0%	-	-	-	-	-	0.0%
YTD:	-	0.0%	-	0.0%	-	0.0%	-	0.0%	-	0.0%	-	-	-	-	-	0.0%

* Local Market Area Code: 826; Type: Census Place Group
 ** Closed Sale counts for most recent 3 months are Preliminary.

Market Analysis By Local Market Area*: Ropesville

Property Type	Closed Sales**	YoY%	Dollar Volume	YoY%	Average Price	YoY%	Median Price	YoY%	Price/Sqft	YoY%	DOM	New Listings	Active Listings	Pending Sales	Months Inventory	Close To OLP
All(New and Existing)																
Residential (SF/COND/TH)	-	0.0%	-	0.0%	-	0.0%	-	0.0%	-	0.0%	-	-	-	-	-	0.0%
YTD:	-	0.0%	-	0.0%	-	0.0%	-	0.0%	-	0.0%	-	-	-	-	-	0.0%
Single Family	-	0.0%	-	0.0%	-	0.0%	-	0.0%	-	0.0%	-	-	-	-	-	0.0%
YTD:	-	0.0%	-	0.0%	-	0.0%	-	0.0%	-	0.0%	-	-	-	-	-	0.0%
Townhouse	-	0.0%	-	0.0%	-	0.0%	-	0.0%	-	0.0%	-	-	-	-	-	0.0%
YTD:	-	0.0%	-	0.0%	-	0.0%	-	0.0%	-	0.0%	-	-	-	-	-	0.0%
Condominium	-	0.0%	-	0.0%	-	0.0%	-	0.0%	-	0.0%	-	-	-	-	-	0.0%
YTD:	-	0.0%	-	0.0%	-	0.0%	-	0.0%	-	0.0%	-	-	-	-	-	0.0%
Existing Home																
Residential (SF/COND/TH)	-	0.0%	-	0.0%	-	0.0%	-	0.0%	-	0.0%	-	-	-	-	-	0.0%
YTD:	-	0.0%	-	0.0%	-	0.0%	-	0.0%	-	0.0%	-	-	-	-	-	0.0%
Single Family	-	0.0%	-	0.0%	-	0.0%	-	0.0%	-	0.0%	-	-	-	-	-	0.0%
YTD:	-	0.0%	-	0.0%	-	0.0%	-	0.0%	-	0.0%	-	-	-	-	-	0.0%
Townhouse	-	0.0%	-	0.0%	-	0.0%	-	0.0%	-	0.0%	-	-	-	-	-	0.0%
YTD:	-	0.0%	-	0.0%	-	0.0%	-	0.0%	-	0.0%	-	-	-	-	-	0.0%
Condominium	-	0.0%	-	0.0%	-	0.0%	-	0.0%	-	0.0%	-	-	-	-	-	0.0%
YTD:	-	0.0%	-	0.0%	-	0.0%	-	0.0%	-	0.0%	-	-	-	-	-	0.0%
New Construction																
Residential (SF/COND/TH)	-	0.0%	-	0.0%	-	0.0%	-	0.0%	-	0.0%	-	-	-	-	-	0.0%
YTD:	-	0.0%	-	0.0%	-	0.0%	-	0.0%	-	0.0%	-	-	-	-	-	0.0%
Single Family	-	0.0%	-	0.0%	-	0.0%	-	0.0%	-	0.0%	-	-	-	-	-	0.0%
YTD:	-	0.0%	-	0.0%	-	0.0%	-	0.0%	-	0.0%	-	-	-	-	-	0.0%
Townhouse	-	0.0%	-	0.0%	-	0.0%	-	0.0%	-	0.0%	-	-	-	-	-	0.0%
YTD:	-	0.0%	-	0.0%	-	0.0%	-	0.0%	-	0.0%	-	-	-	-	-	0.0%
Condominium	-	0.0%	-	0.0%	-	0.0%	-	0.0%	-	0.0%	-	-	-	-	-	0.0%
YTD:	-	0.0%	-	0.0%	-	0.0%	-	0.0%	-	0.0%	-	-	-	-	-	0.0%

* Local Market Area Code: 222; Type: Census Place Group
 ** Closed Sale counts for most recent 3 months are Preliminary.

Market Analysis By Local Market Area*: Shallowater

Property Type	Closed Sales**	YoY%	Dollar Volume	YoY%	Average Price	YoY%	Median Price	YoY%	Price/Sqft	YoY%	DOM	New Listings	Active Listings	Pending Sales	Months Inventory	Close To OLP
All(New and Existing)																
Residential (SF/COND/TH)	4	-20.0%	\$799,000	-13.0%	\$199,750	8.8%	\$213,000	33.1%	\$101	-18.6%	60	6	6	4	2.3	87.2%
YTD:	6	-53.9%	\$1,364,000	-45.7%	\$227,333	17.7%	\$250,000	56.3%	\$108	-5.4%	78	14	4	8		89.4%
Single Family	4	-20.0%	\$799,000	-13.0%	\$199,750	8.8%	\$213,000	33.1%	\$101	-18.6%	60	6	6	4	2.3	87.2%
YTD:	6	-53.9%	\$1,364,000	-45.7%	\$227,333	17.7%	\$250,000	56.3%	\$108	-5.4%	78	14	4	8		89.4%
Townhouse	-	0.0%	-	0.0%	-	0.0%	-	0.0%	-	0.0%	-	-	-	-	-	0.0%
YTD:	-	0.0%	-	0.0%	-	0.0%	-	0.0%	-	0.0%	-	-	-	-	-	0.0%
Condominium	-	0.0%	-	0.0%	-	0.0%	-	0.0%	-	0.0%	-	-	-	-	-	0.0%
YTD:	-	0.0%	-	0.0%	-	0.0%	-	0.0%	-	0.0%	-	-	-	-	-	0.0%
Existing Home																
Residential (SF/COND/TH)	4	0.0%	\$799,000	40.4%	\$199,750	40.4%	\$213,000	55.5%	\$101	-11.5%	60	6	5	3	2.0	87.2%
YTD:	6	-50.0%	\$1,364,000	-36.9%	\$227,333	26.2%	\$250,000	60.0%	\$108	-1.8%	78	12	4	7		89.4%
Single Family	4	0.0%	\$799,000	40.4%	\$199,750	40.4%	\$213,000	55.5%	\$101	-11.5%	60	6	5	3	2.0	87.2%
YTD:	6	-50.0%	\$1,364,000	-36.9%	\$227,333	26.2%	\$250,000	60.0%	\$108	-1.8%	78	12	4	7		89.4%
Townhouse	-	0.0%	-	0.0%	-	0.0%	-	0.0%	-	0.0%	-	-	-	-	-	0.0%
YTD:	-	0.0%	-	0.0%	-	0.0%	-	0.0%	-	0.0%	-	-	-	-	-	0.0%
Condominium	-	0.0%	-	0.0%	-	0.0%	-	0.0%	-	0.0%	-	-	-	-	-	0.0%
YTD:	-	0.0%	-	0.0%	-	0.0%	-	0.0%	-	0.0%	-	-	-	-	-	0.0%
New Construction																
Residential (SF/COND/TH)	-	-100.0%	-	-100.0%	-	-100.0%	-	-100.0%	-	-100.0%	-	-	1	1	12.0	0.0%
YTD:	-	-100.0%	-	-100.0%	-	-100.0%	-	-100.0%	-	-100.0%	-	2	1	1		0.0%
Single Family	-	-100.0%	-	-100.0%	-	-100.0%	-	-100.0%	-	-100.0%	-	-	1	1	12.0	0.0%
YTD:	-	-100.0%	-	-100.0%	-	-100.0%	-	-100.0%	-	-100.0%	-	2	1	1		0.0%
Townhouse	-	0.0%	-	0.0%	-	0.0%	-	0.0%	-	0.0%	-	-	-	-	-	0.0%
YTD:	-	0.0%	-	0.0%	-	0.0%	-	0.0%	-	0.0%	-	-	-	-	-	0.0%
Condominium	-	0.0%	-	0.0%	-	0.0%	-	0.0%	-	0.0%	-	-	-	-	-	0.0%
YTD:	-	0.0%	-	0.0%	-	0.0%	-	0.0%	-	0.0%	-	-	-	-	-	0.0%

* Local Market Area Code: 925; Type: Census Place Group
 ** Closed Sale counts for most recent 3 months are Preliminary.

Market Analysis By Local Market Area*: Slaton

Property Type	Closed Sales**	YoY%	Dollar Volume	YoY%	Average Price	YoY%	Median Price	YoY%	Price/Sqft	YoY%	DOM	New Listings	Active Listings	Pending Sales	Months Inventory	Close To OLP
All(New and Existing)																
Residential (SF/COND/TH)	4	0.0%	\$487,900	-32.2%	\$121,975	-32.2%	\$122,950	-23.1%	\$66	-41.2%	102	3	26	4	9.5	77.4%
YTD:	10	25.0%	\$1,422,150	11.4%	\$142,215	-10.9%	\$173,250	19.5%	\$92	7.4%	82	25	26	14		87.1%
Single Family	4	0.0%	\$487,900	-32.2%	\$121,975	-32.2%	\$122,950	-23.1%	\$66	-41.2%	102	3	26	4	9.5	77.4%
YTD:	10	25.0%	\$1,422,150	11.4%	\$142,215	-10.9%	\$173,250	19.5%	\$92	7.4%	82	25	26	14		87.1%
Townhouse	-	0.0%	-	0.0%	-	0.0%	-	0.0%	-	0.0%	-	-	-	-	-	0.0%
YTD:	-	0.0%	-	0.0%	-	0.0%	-	0.0%	-	0.0%	-	-	-	-	-	0.0%
Condominium	-	0.0%	-	0.0%	-	0.0%	-	0.0%	-	0.0%	-	-	-	-	-	0.0%
YTD:	-	0.0%	-	0.0%	-	0.0%	-	0.0%	-	0.0%	-	-	-	-	-	0.0%
Existing Home																
Residential (SF/COND/TH)	4	0.0%	\$487,900	-32.2%	\$121,975	-32.2%	\$122,950	-23.1%	\$66	-41.2%	102	2	25	4	9.1	77.4%
YTD:	10	25.0%	\$1,422,150	11.4%	\$142,215	-10.9%	\$173,250	19.5%	\$92	7.4%	82	24	26	14		87.1%
Single Family	4	0.0%	\$487,900	-32.2%	\$121,975	-32.2%	\$122,950	-23.1%	\$66	-41.2%	102	2	25	4	9.1	77.4%
YTD:	10	25.0%	\$1,422,150	11.4%	\$142,215	-10.9%	\$173,250	19.5%	\$92	7.4%	82	24	26	14		87.1%
Townhouse	-	0.0%	-	0.0%	-	0.0%	-	0.0%	-	0.0%	-	-	-	-	-	0.0%
YTD:	-	0.0%	-	0.0%	-	0.0%	-	0.0%	-	0.0%	-	-	-	-	-	0.0%
Condominium	-	0.0%	-	0.0%	-	0.0%	-	0.0%	-	0.0%	-	-	-	-	-	0.0%
YTD:	-	0.0%	-	0.0%	-	0.0%	-	0.0%	-	0.0%	-	-	-	-	-	0.0%
New Construction																
Residential (SF/COND/TH)	-	0.0%	-	0.0%	-	0.0%	-	0.0%	-	0.0%	-	1	1	-	-	0.0%
YTD:	-	0.0%	-	0.0%	-	0.0%	-	0.0%	-	0.0%	-	1	1	-	-	0.0%
Single Family	-	0.0%	-	0.0%	-	0.0%	-	0.0%	-	0.0%	-	1	1	-	-	0.0%
YTD:	-	0.0%	-	0.0%	-	0.0%	-	0.0%	-	0.0%	-	1	1	-	-	0.0%
Townhouse	-	0.0%	-	0.0%	-	0.0%	-	0.0%	-	0.0%	-	-	-	-	-	0.0%
YTD:	-	0.0%	-	0.0%	-	0.0%	-	0.0%	-	0.0%	-	-	-	-	-	0.0%
Condominium	-	0.0%	-	0.0%	-	0.0%	-	0.0%	-	0.0%	-	-	-	-	-	0.0%
YTD:	-	0.0%	-	0.0%	-	0.0%	-	0.0%	-	0.0%	-	-	-	-	-	0.0%

* Local Market Area Code: 935; Type: Census Place Group
 ** Closed Sale counts for most recent 3 months are Preliminary.

Market Analysis By Local Market Area*: Smyer

Property Type	Closed Sales**	YoY%	Dollar Volume	YoY%	Average Price	YoY%	Median Price	YoY%	Price/Sqft	YoY%	DOM	New Listings	Active Listings	Pending Sales	Months Inventory	Close To OLP
All(New and Existing)																
Residential (SF/COND/TH)	-	0.0%	-	0.0%	-	0.0%	-	0.0%	-	0.0%	-	-	1	-	6.0	0.0%
YTD:	-	0.0%	-	0.0%	-	0.0%	-	0.0%	-	0.0%	-	1	1	-		0.0%
Single Family	-	0.0%	-	0.0%	-	0.0%	-	0.0%	-	0.0%	-	-	1	-	6.0	0.0%
YTD:	-	0.0%	-	0.0%	-	0.0%	-	0.0%	-	0.0%	-	1	1	-		0.0%
Townhouse	-	0.0%	-	0.0%	-	0.0%	-	0.0%	-	0.0%	-	-	-	-	-	0.0%
YTD:	-	0.0%	-	0.0%	-	0.0%	-	0.0%	-	0.0%	-	-	-	-	-	0.0%
Condominium	-	0.0%	-	0.0%	-	0.0%	-	0.0%	-	0.0%	-	-	-	-	-	0.0%
YTD:	-	0.0%	-	0.0%	-	0.0%	-	0.0%	-	0.0%	-	-	-	-	-	0.0%
Existing Home																
Residential (SF/COND/TH)	-	0.0%	-	0.0%	-	0.0%	-	0.0%	-	0.0%	-	-	1	-	6.0	0.0%
YTD:	-	0.0%	-	0.0%	-	0.0%	-	0.0%	-	0.0%	-	1	1	-		0.0%
Single Family	-	0.0%	-	0.0%	-	0.0%	-	0.0%	-	0.0%	-	-	1	-	6.0	0.0%
YTD:	-	0.0%	-	0.0%	-	0.0%	-	0.0%	-	0.0%	-	1	1	-		0.0%
Townhouse	-	0.0%	-	0.0%	-	0.0%	-	0.0%	-	0.0%	-	-	-	-	-	0.0%
YTD:	-	0.0%	-	0.0%	-	0.0%	-	0.0%	-	0.0%	-	-	-	-	-	0.0%
Condominium	-	0.0%	-	0.0%	-	0.0%	-	0.0%	-	0.0%	-	-	-	-	-	0.0%
YTD:	-	0.0%	-	0.0%	-	0.0%	-	0.0%	-	0.0%	-	-	-	-	-	0.0%
New Construction																
Residential (SF/COND/TH)	-	0.0%	-	0.0%	-	0.0%	-	0.0%	-	0.0%	-	-	-	-	-	0.0%
YTD:	-	0.0%	-	0.0%	-	0.0%	-	0.0%	-	0.0%	-	-	-	-	-	0.0%
Single Family	-	0.0%	-	0.0%	-	0.0%	-	0.0%	-	0.0%	-	-	-	-	-	0.0%
YTD:	-	0.0%	-	0.0%	-	0.0%	-	0.0%	-	0.0%	-	-	-	-	-	0.0%
Townhouse	-	0.0%	-	0.0%	-	0.0%	-	0.0%	-	0.0%	-	-	-	-	-	0.0%
YTD:	-	0.0%	-	0.0%	-	0.0%	-	0.0%	-	0.0%	-	-	-	-	-	0.0%
Condominium	-	0.0%	-	0.0%	-	0.0%	-	0.0%	-	0.0%	-	-	-	-	-	0.0%
YTD:	-	0.0%	-	0.0%	-	0.0%	-	0.0%	-	0.0%	-	-	-	-	-	0.0%

* Local Market Area Code: 491; Type: Census Place Group
 ** Closed Sale counts for most recent 3 months are Preliminary.

Market Analysis By Local Market Area*: Sundown

Property Type	Closed Sales**	YoY%	Dollar Volume	YoY%	Average Price	YoY%	Median Price	YoY%	Price/Sqft	YoY%	DOM	New Listings	Active Listings	Pending Sales	Months Inventory	Close To OLP
All(New and Existing)																
Residential (SF/COND/TH)	1	0.0%	\$135,000	-7.5%	\$135,000	-7.5%	\$135,000	-7.5%	\$67	11.5%	223	2	5	1	7.5	88.5%
YTD:	2	100.0%	\$245,000	67.9%	\$122,500	-16.0%	\$122,500	-16.0%	\$78	30.2%	119	4	4	3		94.3%
Single Family	1	0.0%	\$135,000	-7.5%	\$135,000	-7.5%	\$135,000	-7.5%	\$67	11.5%	223	2	5	1	7.5	88.5%
YTD:	2	100.0%	\$245,000	67.9%	\$122,500	-16.0%	\$122,500	-16.0%	\$78	30.2%	119	4	4	3		94.3%
Townhouse	-	0.0%	-	0.0%	-	0.0%	-	0.0%	-	0.0%	-	-	-	-	-	0.0%
YTD:	-	0.0%	-	0.0%	-	0.0%	-	0.0%	-	0.0%	-	-	-	-	-	0.0%
Condominium	-	0.0%	-	0.0%	-	0.0%	-	0.0%	-	0.0%	-	-	-	-	-	0.0%
YTD:	-	0.0%	-	0.0%	-	0.0%	-	0.0%	-	0.0%	-	-	-	-	-	0.0%
Existing Home																
Residential (SF/COND/TH)	1	0.0%	\$135,000	-7.5%	\$135,000	-7.5%	\$135,000	-7.5%	\$67	11.5%	223	2	5	1	7.5	88.5%
YTD:	2	100.0%	\$245,000	67.9%	\$122,500	-16.0%	\$122,500	-16.0%	\$78	30.2%	119	4	4	3		94.3%
Single Family	1	0.0%	\$135,000	-7.5%	\$135,000	-7.5%	\$135,000	-7.5%	\$67	11.5%	223	2	5	1	7.5	88.5%
YTD:	2	100.0%	\$245,000	67.9%	\$122,500	-16.0%	\$122,500	-16.0%	\$78	30.2%	119	4	4	3		94.3%
Townhouse	-	0.0%	-	0.0%	-	0.0%	-	0.0%	-	0.0%	-	-	-	-	-	0.0%
YTD:	-	0.0%	-	0.0%	-	0.0%	-	0.0%	-	0.0%	-	-	-	-	-	0.0%
Condominium	-	0.0%	-	0.0%	-	0.0%	-	0.0%	-	0.0%	-	-	-	-	-	0.0%
YTD:	-	0.0%	-	0.0%	-	0.0%	-	0.0%	-	0.0%	-	-	-	-	-	0.0%
New Construction																
Residential (SF/COND/TH)	-	0.0%	-	0.0%	-	0.0%	-	0.0%	-	0.0%	-	-	-	-	-	0.0%
YTD:	-	0.0%	-	0.0%	-	0.0%	-	0.0%	-	0.0%	-	-	-	-	-	0.0%
Single Family	-	0.0%	-	0.0%	-	0.0%	-	0.0%	-	0.0%	-	-	-	-	-	0.0%
YTD:	-	0.0%	-	0.0%	-	0.0%	-	0.0%	-	0.0%	-	-	-	-	-	0.0%
Townhouse	-	0.0%	-	0.0%	-	0.0%	-	0.0%	-	0.0%	-	-	-	-	-	0.0%
YTD:	-	0.0%	-	0.0%	-	0.0%	-	0.0%	-	0.0%	-	-	-	-	-	0.0%
Condominium	-	0.0%	-	0.0%	-	0.0%	-	0.0%	-	0.0%	-	-	-	-	-	0.0%
YTD:	-	0.0%	-	0.0%	-	0.0%	-	0.0%	-	0.0%	-	-	-	-	-	0.0%

* Local Market Area Code: 223; Type: Census Place Group
 ** Closed Sale counts for most recent 3 months are Preliminary.

Market Analysis By Local Market Area*: Wolfforth

Property Type	Closed Sales**	YoY%	Dollar Volume	YoY%	Average Price	YoY%	Median Price	YoY%	Price/Sqft	YoY%	DOM	New Listings	Active Listings	Pending Sales	Months Inventory	Close To OLP
All(New and Existing)																
Residential (SF/COND/TH)	5	-50.0%	\$1,389,480	-53.1%	\$277,896	-6.1%	\$291,990	17.3%	\$144	-5.8%	97	27	51	14	4.1	94.8%
YTD:	26	0.0%	\$7,736,820	-6.3%	\$297,570	-6.3%	\$261,425	-13.2%	\$148	-4.8%	77	67	48	37		95.6%
Single Family	5	-50.0%	\$1,389,480	-53.1%	\$277,896	-6.1%	\$291,990	17.3%	\$144	-5.8%	97	27	51	14	4.3	94.8%
YTD:	23	-8.0%	\$7,151,820	-11.5%	\$310,949	-3.8%	\$284,500	-9.7%	\$146	-6.2%	74	67	48	35		95.3%
Townhouse	-	0.0%	-	0.0%	-	0.0%	-	0.0%	-	0.0%	-	-	-	-	-	0.0%
YTD:	3	200.0%	\$585,000	238.2%	\$195,000	12.7%	\$195,000	12.7%	\$160	12.7%	100	-	-	2		97.7%
Condominium	-	0.0%	-	0.0%	-	0.0%	-	0.0%	-	0.0%	-	-	-	-	-	0.0%
YTD:	-	0.0%	-	0.0%	-	0.0%	-	0.0%	-	0.0%	-	-	-	-	-	0.0%
Existing Home																
Residential (SF/COND/TH)	3	-57.1%	\$794,500	-50.9%	\$264,833	14.5%	\$246,500	9.6%	\$142	8.8%	78	14	27	11	2.7	92.8%
YTD:	16	-11.1%	\$4,710,000	-8.3%	\$294,375	3.2%	\$265,500	6.6%	\$137	-5.2%	75	42	30	26		93.2%
Single Family	3	-57.1%	\$794,500	-50.9%	\$264,833	14.5%	\$246,500	9.6%	\$142	8.8%	78	14	27	11	2.8	92.8%
YTD:	16	-5.9%	\$4,710,000	-5.1%	\$294,375	0.9%	\$265,500	4.9%	\$137	-5.3%	75	42	30	26		93.2%
Townhouse	-	0.0%	-	0.0%	-	0.0%	-	0.0%	-	0.0%	-	-	-	-	-	0.0%
YTD:	-	-100.0%	-	-100.0%	-	-100.0%	-	-100.0%	-	-100.0%	-	-	-	-	-	0.0%
Condominium	-	0.0%	-	0.0%	-	0.0%	-	0.0%	-	0.0%	-	-	-	-	-	0.0%
YTD:	-	0.0%	-	0.0%	-	0.0%	-	0.0%	-	0.0%	-	-	-	-	-	0.0%
New Construction																
Residential (SF/COND/TH)	2	-33.3%	\$594,980	-55.6%	\$297,490	-33.4%	\$297,490	-32.2%	\$146	-28.2%	127	13	24	3	9.3	97.7%
YTD:	10	25.0%	\$3,026,820	-3.1%	\$302,682	-22.5%	\$261,425	-38.7%	\$165	-8.0%	79	25	18	11		99.3%
Single Family	2	-33.3%	\$594,980	-55.6%	\$297,490	-33.4%	\$297,490	-32.2%	\$146	-28.2%	127	13	24	3	11.5	97.7%
YTD:	7	-12.5%	\$2,441,820	-21.8%	\$348,831	-10.6%	\$291,990	-31.5%	\$167	-6.9%	71	25	18	9		100.0%
Townhouse	-	0.0%	-	0.0%	-	0.0%	-	0.0%	-	0.0%	-	-	-	-	-	0.0%
YTD:	3	100.0%	\$585,000	100.0%	\$195,000	100.0%	\$195,000	100.0%	\$160	100.0%	100	-	-	2		97.7%
Condominium	-	0.0%	-	0.0%	-	0.0%	-	0.0%	-	0.0%	-	-	-	-	-	0.0%
YTD:	-	0.0%	-	0.0%	-	0.0%	-	0.0%	-	0.0%	-	-	-	-	-	0.0%

* Local Market Area Code: 1096; Type: Census Place Group
 ** Closed Sale counts for most recent 3 months are Preliminary.

