

Market Analysis By State: Texas

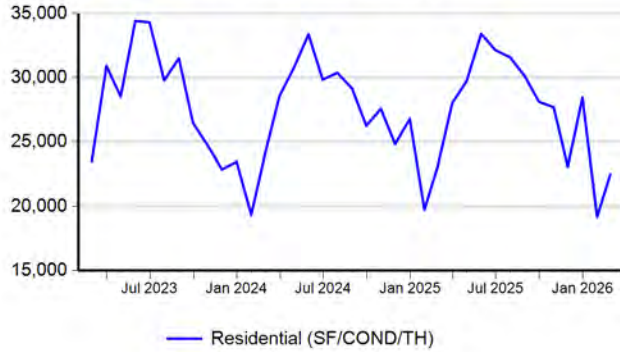
Property Type	Closed Sales*	YoY%	Dollar Volume	YoY%	Average Price	YoY%	Median Price	YoY%	Price/Sqft	YoY%	DOM	New Listings	Active Listings	Pending Sales	Months Inventory	Close To OLP
All(New and Existing)																
Residential (SF/COND/TH)	22,513	-2.6%	\$9,293,666,771	-1.1%	\$412,813	1.5%	\$326,000	-0.6%	\$184	-1.6%	82	47,039	135,474	28,011	4.9	93.0%
YTD:	41,706	-2.7%	\$17,060,039,314	-1.8%	\$409,055	0.9%	\$325,000	-0.8%	\$183	-2.0%	81	93,744	133,447	52,548		92.8%
Single Family	21,425	-2.0%	\$8,910,041,992	-0.5%	\$415,871	1.6%	\$329,200	-0.2%	\$182	-1.3%	81	43,602	123,762	26,689	4.7	93.1%
YTD:	39,651	-2.0%	\$16,364,316,363	-0.9%	\$412,709	1.1%	\$325,900	-1.2%	\$181	-1.6%	80	86,793	122,102	50,018		92.9%
Townhouse	493	-15.2%	\$182,306,215	-16.3%	\$369,789	-1.4%	\$321,000	-5.0%	\$192	-2.6%	80	1,431	4,218	594	6.7	93.4%
YTD:	904	-18.3%	\$314,815,916	-21.8%	\$348,248	-4.3%	\$314,000	-4.6%	\$186	-4.3%	82	2,875	4,084	1,138		92.8%
Condominium	574	-12.6%	\$194,118,987	-13.8%	\$338,186	-1.4%	\$235,500	-9.4%	\$242	-6.5%	105	2,006	7,494	728	9.9	90.5%
YTD:	1,119	-13.9%	\$370,239,212	-19.4%	\$330,866	-6.4%	\$225,625	-9.8%	\$239	-6.5%	100	4,076	7,261	1,392		90.5%
Existing Home																
Residential (SF/COND/TH)	16,753	2.3%	\$6,888,469,752	2.7%	\$411,178	0.4%	\$320,000	-0.6%	\$185	-2.0%	78	36,486	102,975	19,394	5.1	93.4%
YTD:	30,997	1.2%	\$12,650,852,849	1.7%	\$408,132	0.5%	\$315,000	-1.6%	\$184	-2.0%	78	71,970	100,683	37,023		93.0%
Single Family	15,798	3.2%	\$6,563,612,251	3.6%	\$415,471	0.4%	\$323,400	-0.5%	\$183	-1.5%	77	33,442	92,681	18,240	4.8	93.5%
YTD:	29,185	2.2%	\$12,059,837,321	2.8%	\$413,220	0.6%	\$320,000	-1.3%	\$182	-1.6%	77	65,816	90,745	34,803		93.1%
Townhouse	391	-12.3%	\$144,349,854	-11.1%	\$369,181	1.5%	\$315,000	-0.7%	\$191	-1.0%	78	1,142	3,314	473	6.6	93.8%
YTD:	721	-14.3%	\$247,269,912	-15.5%	\$342,954	-1.4%	\$307,500	0.1%	\$183	-2.8%	82	2,320	3,200	914		93.0%
Condominium	545	-12.7%	\$174,273,042	-17.4%	\$319,767	-5.4%	\$227,750	-8.9%	\$238	-7.6%	105	1,902	6,980	681	9.7	90.6%
YTD:	1,066	-13.7%	\$336,063,412	-19.0%	\$315,256	-6.2%	\$219,250	-8.7%	\$235	-6.8%	100	3,834	6,738	1,306		90.5%
New Construction																
Residential (SF/COND/TH)	5,754	-14.5%	\$2,402,790,634	-10.5%	\$417,586	4.7%	\$339,900	0.8%	\$181	-1.0%	92	10,553	32,499	8,617	4.3	92.1%
YTD:	10,690	-12.7%	\$4,401,454,329	-10.9%	\$411,736	2.1%	\$339,990	-0.2%	\$180	-2.1%	90	21,774	32,764	15,525		92.0%
Single Family	5,620	-14.3%	\$2,343,530,850	-10.3%	\$416,998	4.7%	\$339,020	1.1%	\$180	-0.9%	92	10,160	31,081	8,449	4.2	92.1%
YTD:	10,450	-12.3%	\$4,297,860,729	-10.1%	\$411,279	2.4%	\$339,950	0.0%	\$179	-1.9%	90	20,977	31,357	15,215		92.1%
Townhouse	99	-26.7%	\$36,846,309	-33.6%	\$372,185	-9.5%	\$350,900	-9.4%	\$198	-7.1%	88	289	904	121	6.9	91.7%
YTD:	180	-32.3%	\$66,490,615	-39.7%	\$369,392	-10.9%	\$330,490	-10.7%	\$199	-7.3%	82	555	883	224		91.9%
Condominium	29	-12.1%	\$19,918,307	38.4%	\$686,838	57.5%	\$473,440	18.4%	\$306	12.9%	104	104	514	47	14.0	89.6%
YTD:	53	-18.5%	\$34,209,421	-22.9%	\$645,461	-5.5%	\$399,149	0.5%	\$320	-1.0%	104	242	523	86		90.6%

* Closed Sale counts for most recent 3 months are Preliminary.

Trend Analysis By State: Texas

Residential, All (New and Existing)

Monthly Units Sold



Single Family, New vs. Existing

Monthly Units Sold



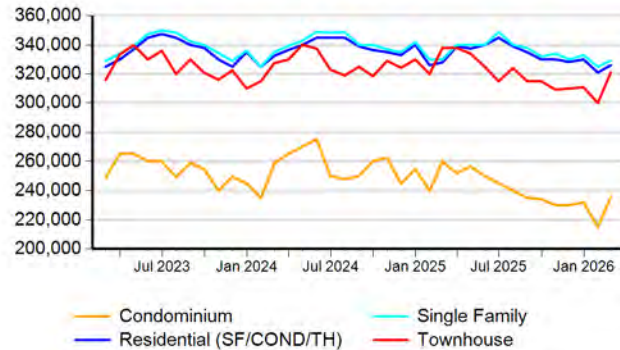
COND/TH, All (New and Existing)

Monthly Units Sold



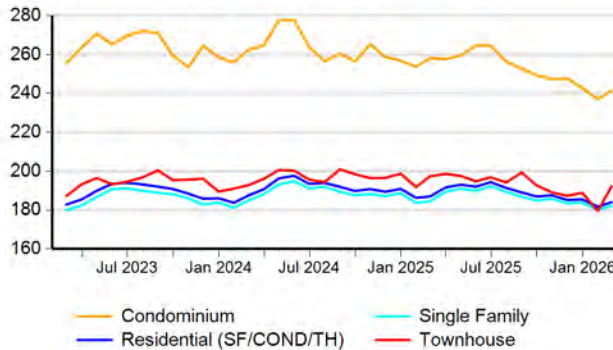
All (New and Existing) Construction

Median Sale Price



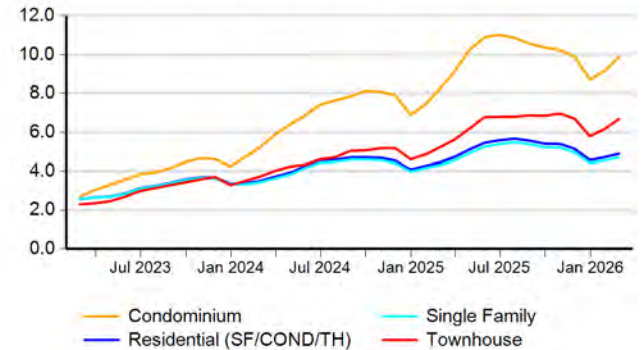
All (New and Existing) Construction

Average Close Price PSF



All (New and Existing) Construction

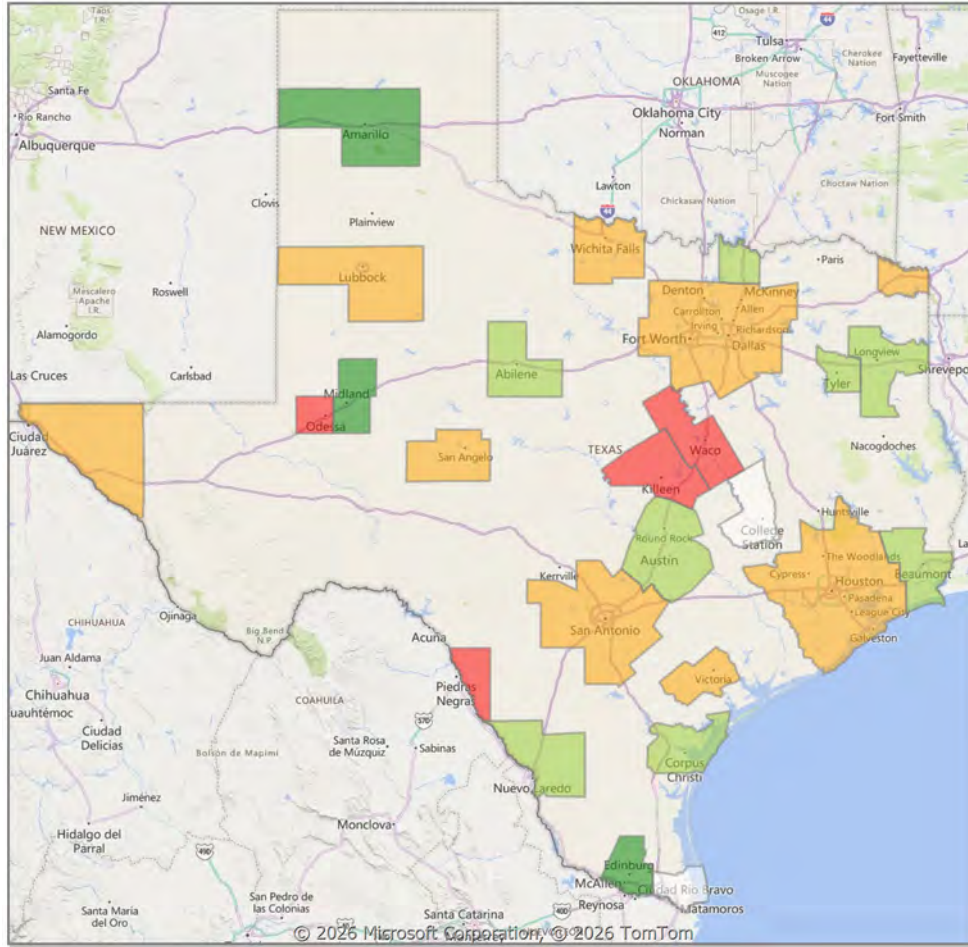
Months Inventory



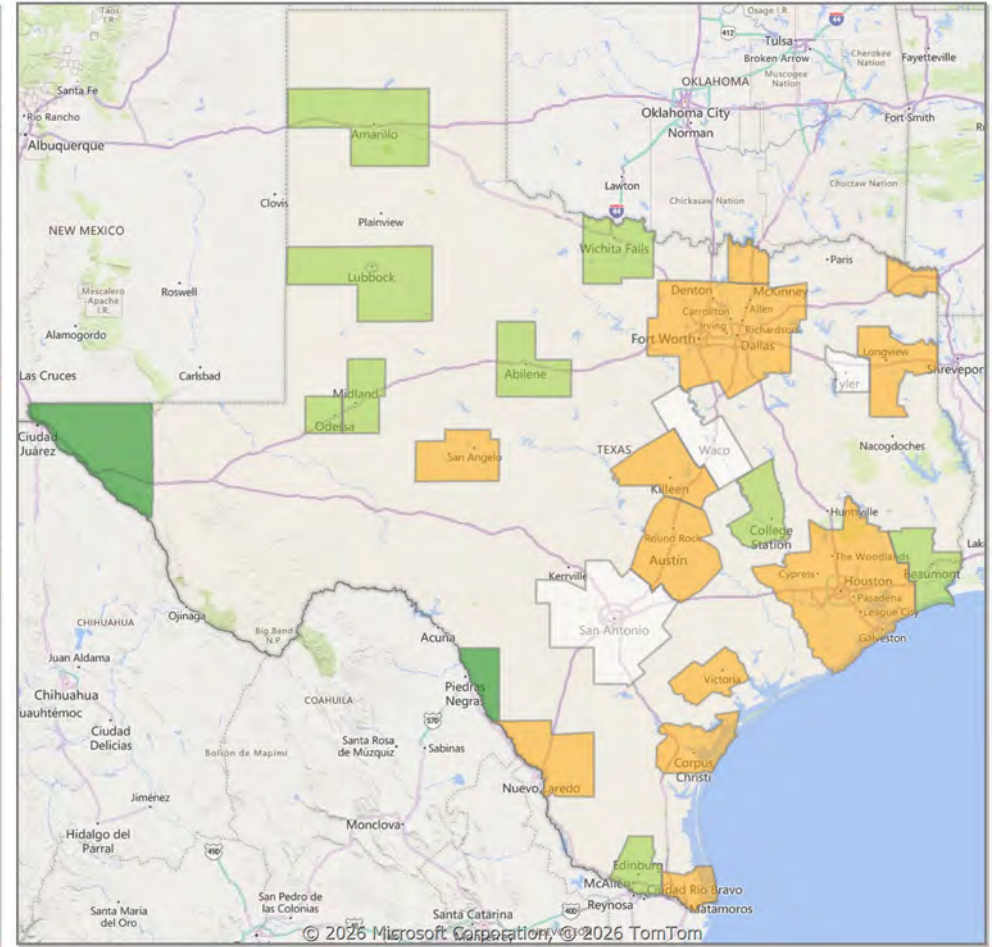
* Closed Sale counts for most recent 3 months are Preliminary.

Comparison By Metropolitan Statistical Area in Texas

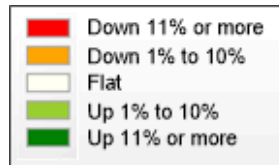
**Residential* Closed Sales
YoY Percentage Change**



**Residential* Avg Close Price Per SqFt
YoY Percentage Change**

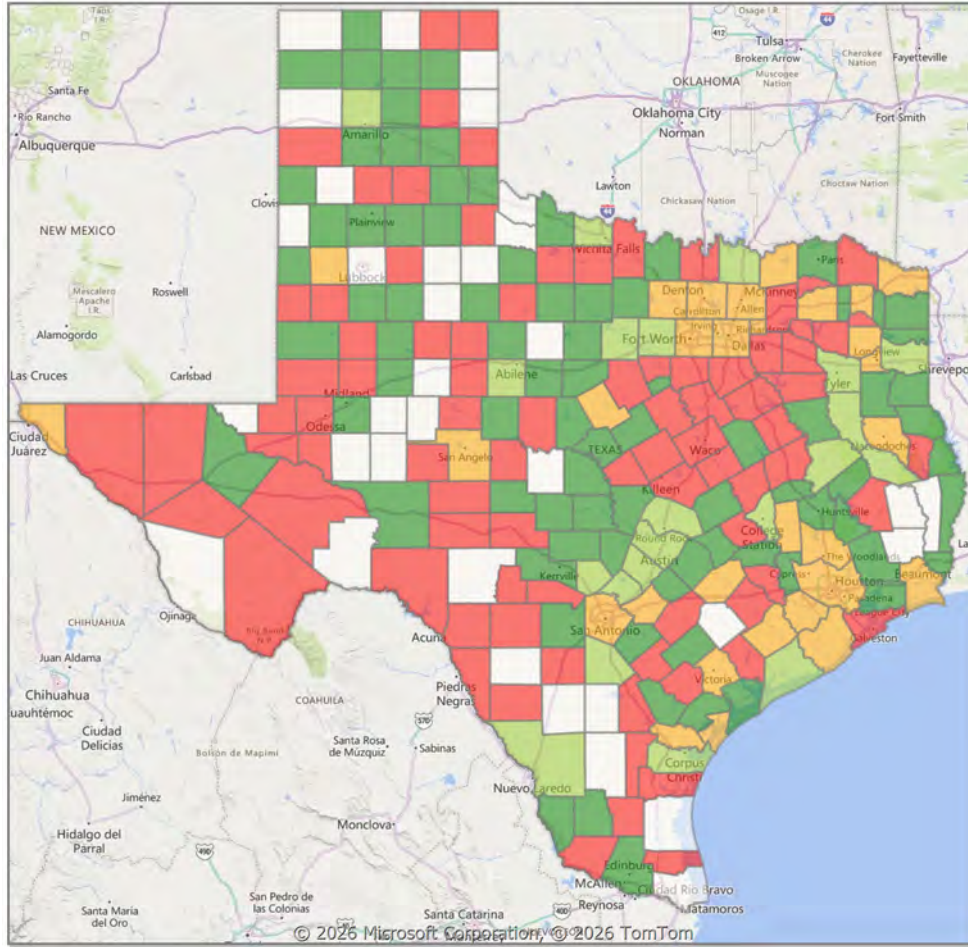


* Residential includes Single Family, Condominium and Townhouse.

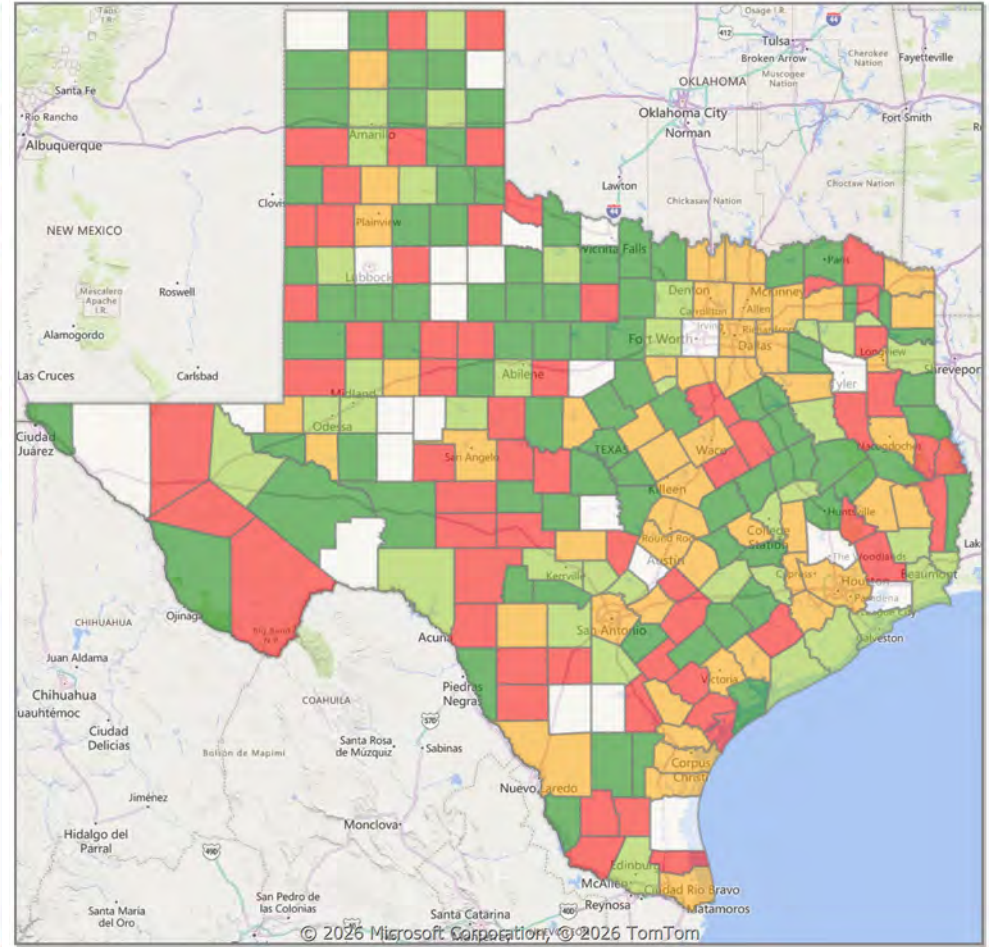


Comparison By County in Texas

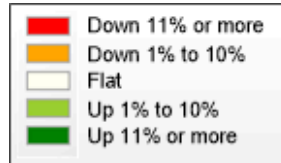
Residential* Closed Sales YoY Percentage Change



Residential* Avg Close Price Per SqFt YoY Percentage Change



* Residential includes Single Family, Condominium and Townhouse.



Market Analysis By Metropolitan Statistical Area: Lubbock

Property Type	Closed Sales*	YoY%	Dollar Volume	YoY%	Average Price	YoY%	Median Price	YoY%	Price/Sqft	YoY%	DOM	New Listings	Active Listings	Pending Sales	Months Inventory	Close To OLP
All(New and Existing)																
Residential (SF/COND/TH)	359	-1.1%	\$109,536,029	5.3%	\$305,114	6.4%	\$240,000	0.8%	\$143	2.5%	61	772	1,616	503	3.7	94.5%
YTD:	652	-1.7%	\$191,650,860	1.3%	\$293,943	3.0%	\$231,000	-1.5%	\$141	2.4%	60	1,547	1,586	943		94.2%
Single Family	356	-0.8%	\$108,940,196	5.5%	\$306,012	6.4%	\$240,000	0.4%	\$143	2.4%	61	745	1,560	493	3.6	94.5%
YTD:	643	-1.2%	\$189,828,502	1.6%	\$295,223	2.9%	\$233,500	-0.6%	\$141	2.2%	60	1,509	1,536	927		94.1%
Townhouse	1	-66.7%	\$195,000	-68.6%	\$195,000	-5.7%	\$195,000	-4.9%	\$127	11.3%	8	23	52	3	8.2	98.5%
YTD:	6	-33.3%	\$1,198,000	-33.5%	\$199,667	-0.2%	\$195,000	2.6%	\$142	16.8%	60	32	44	8		98.6%
Condominium	2	100.0%	\$412,500	106.3%	\$206,250	3.1%	\$206,250	3.1%	\$149	-5.9%	49	4	4	7	2.0	97.2%
YTD:	3	0.0%	\$641,000	7.7%	\$213,667	7.7%	\$228,500	14.3%	\$159	13.0%	34	6	5	8		96.9%

* Closed Sale counts for most recent 3 months are Preliminary.

Existing Home																
Residential (SF/COND/TH)	265	7.7%	\$78,440,494	13.4%	\$296,002	5.3%	\$233,000	3.4%	\$134	3.0%	59	616	1,275	363	3.8	94.3%
YTD:	471	-0.4%	\$134,136,014	1.4%	\$284,790	1.8%	\$225,000	-0.9%	\$132	2.1%	61	1,231	1,246	657		94.0%
Single Family	262	8.3%	\$77,844,125	13.9%	\$297,115	5.2%	\$234,000	2.4%	\$134	2.8%	59	591	1,221	353	3.7	94.3%
YTD:	465	0.7%	\$132,892,009	2.2%	\$285,789	1.5%	\$225,000	-2.2%	\$132	2.0%	61	1,195	1,197	643		93.9%
Townhouse	1	-66.7%	\$195,000	-68.6%	\$195,000	-5.7%	\$195,000	-4.9%	\$127	11.3%	8	21	50	3	9.7	98.5%
YTD:	3	-62.5%	\$613,000	-62.3%	\$204,333	0.6%	\$195,000	1.3%	\$125	2.5%	21	30	43	6		99.5%
Condominium	2	100.0%	\$412,500	106.3%	\$206,250	3.1%	\$206,250	3.1%	\$149	-5.9%	49	4	4	7	2.0	97.2%
YTD:	3	0.0%	\$641,000	7.7%	\$213,667	7.7%	\$228,500	14.3%	\$159	13.0%	34	6	5	8		96.9%

* Closed Sale counts for most recent 3 months are Preliminary.

New Construction																
Residential (SF/COND/TH)	94	-19.7%	\$31,081,015	-10.9%	\$330,649	10.9%	\$262,000	5.7%	\$167	5.7%	67	156	341	140	3.3	95.2%
YTD:	181	-4.7%	\$57,494,431	1.0%	\$317,649	6.0%	\$239,475	-1.9%	\$164	3.8%	59	316	340	286		94.8%
Single Family	94	-19.7%	\$31,081,015	-10.9%	\$330,649	10.9%	\$262,000	5.7%	\$167	5.7%	67	154	339	140	3.3	95.2%
YTD:	178	-5.8%	\$56,915,739	0.3%	\$319,751	6.5%	\$244,000	-0.1%	\$164	3.7%	58	314	338	284		94.7%
Townhouse	-	0.0%	-	0.0%	-	0.0%	-	0.0%	-	0.0%	-	2	2	0	1.7	0.0%
YTD:	3	200.0%	\$585,000	234.5%	\$195,000	11.5%	\$195,000	11.5%	\$160	30.8%	100	2	1	2		97.7%
Condominium	-	0.0%	-	0.0%	-	0.0%	-	0.0%	-	0.0%	-	-	0	0	-	0.0%
YTD:	-	0.0%	-	0.0%	-	0.0%	-	0.0%	-	0.0%	-	0	0	0		0.0%

* Closed Sale counts for most recent 3 months are Preliminary.

Trend Analysis By Metropolitan Statistical Area: Lubbock

Residential, All (New and Existing)

Single Family, New vs. Existing

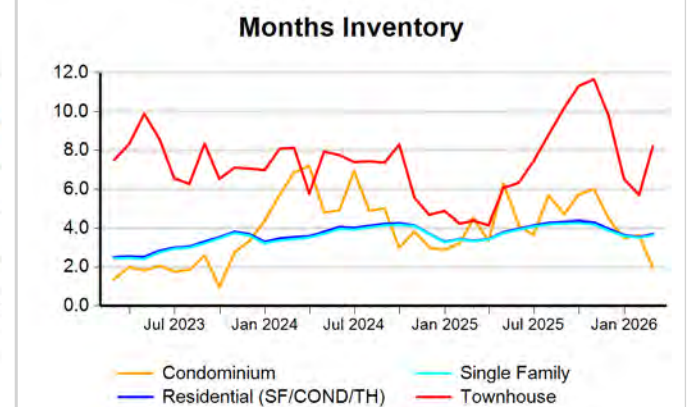
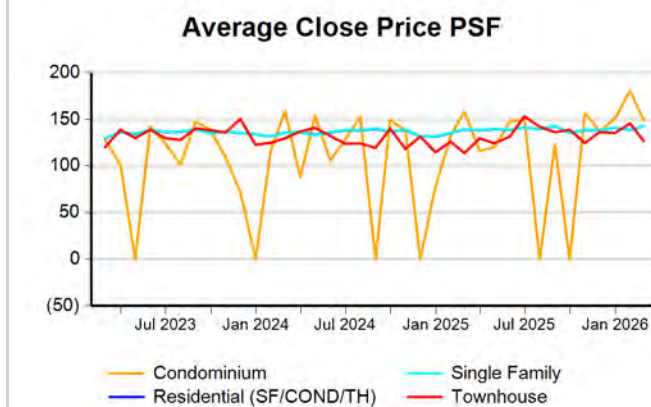
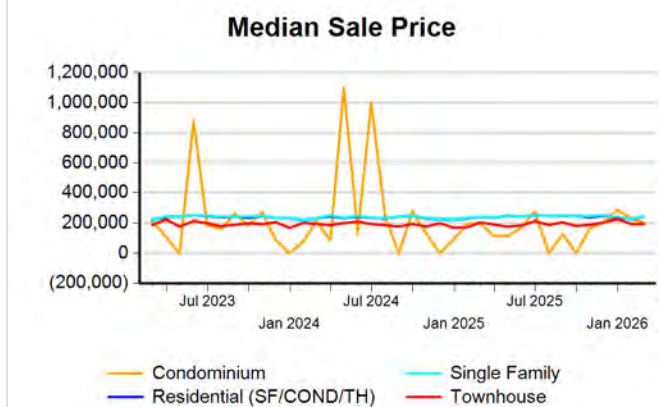
COND/TH, All (New and Existing)



All (New and Existing) Construction

All (New and Existing) Construction

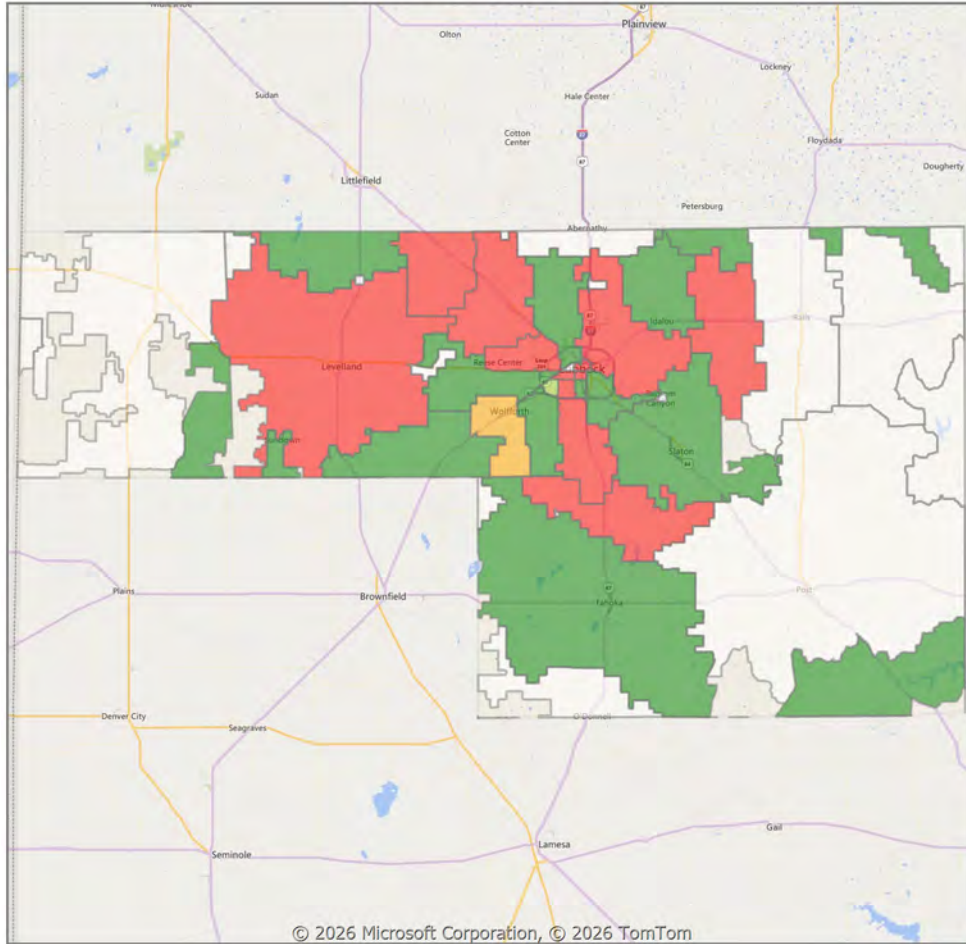
All (New and Existing) Construction



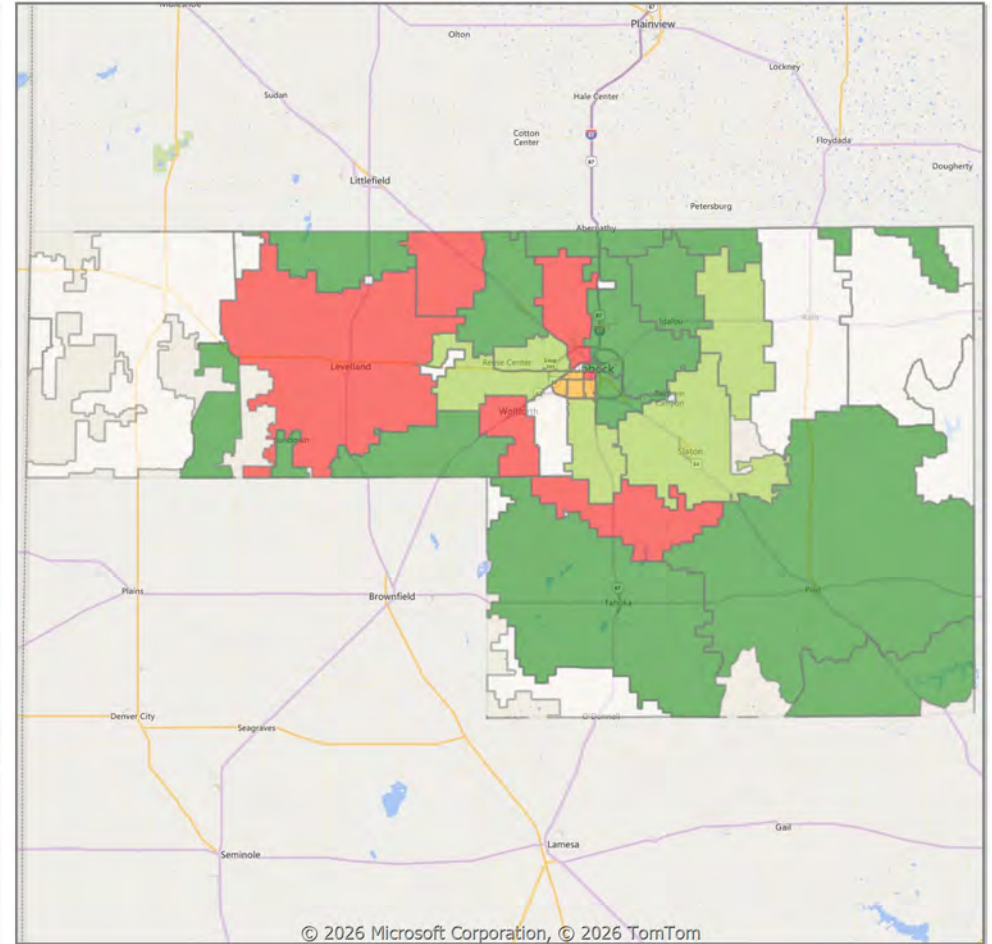
* Closed Sale counts for most recent 3 months are Preliminary.

Comparison By Zip Code* in Lubbock MSA

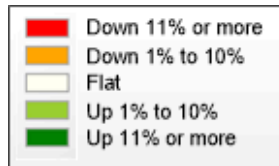
Residential Closed Sales
YoY Percentage Change**



Residential Avg Close Price Per SqFt
YoY Percentage Change**

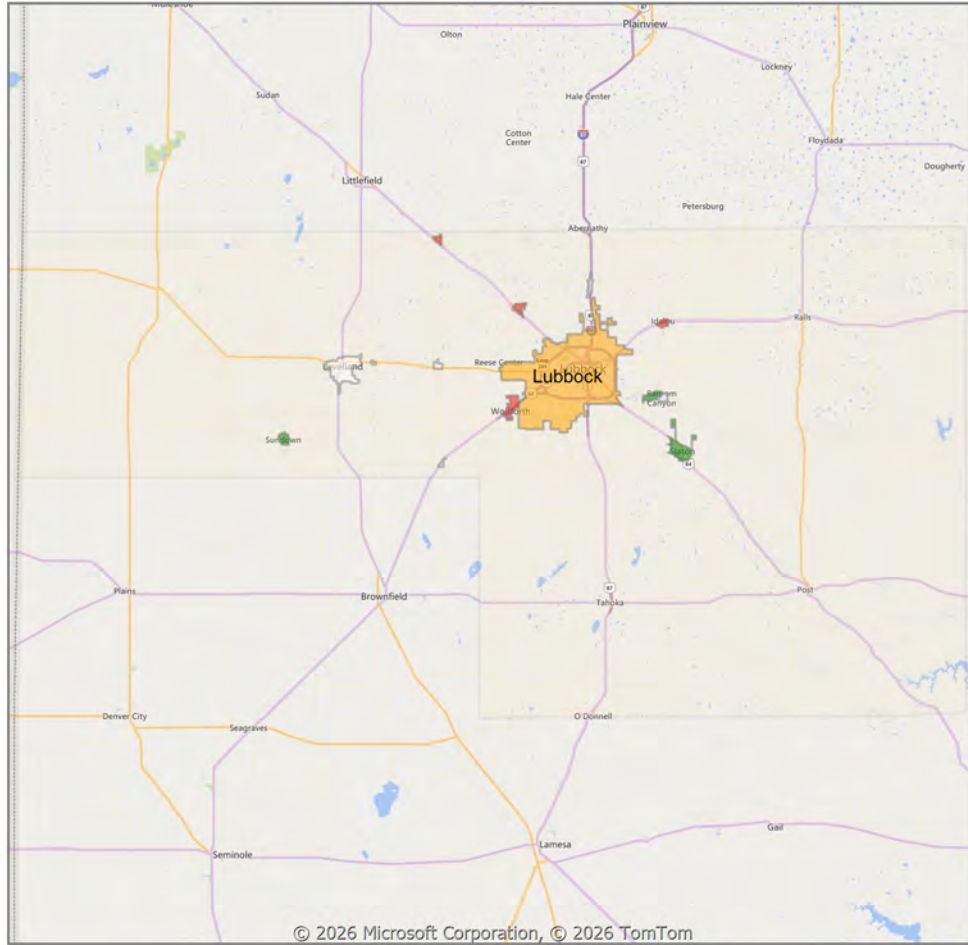


* US Census Zip Code Tabulation Area
** Residential includes Single Family, Condominium and Townhouse.

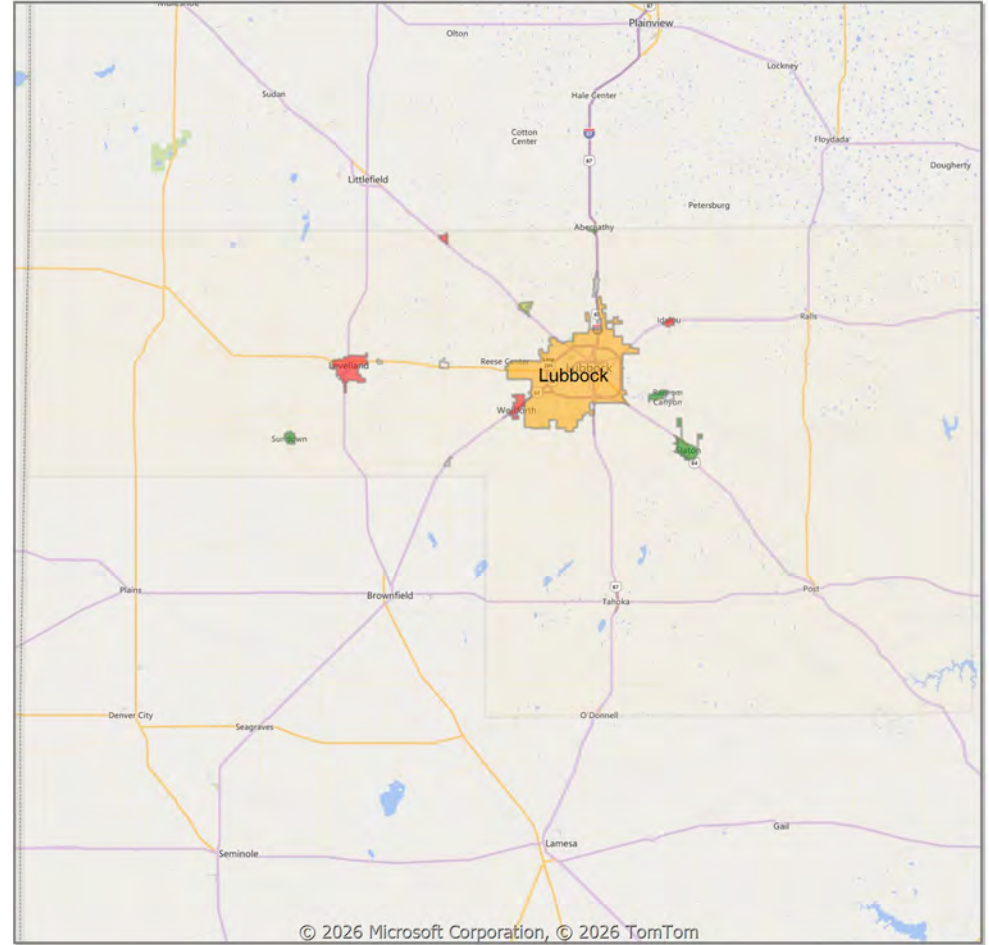


Comparison By Local Market Area* in Lubbock MSA

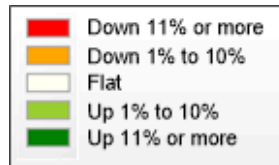
Residential Closed Sales
YoY Percentage Change**



Residential Avg Close Price Per SqFt
YoY Percentage Change**



* Census Place Group
** Residential includes Single Family, Condominium and Townhouse.



Market Analysis By County: Hockley County

Property Type	Closed Sales*	YoY%	Dollar Volume	YoY%	Average Price	YoY%	Median Price	YoY%	Price/Sqft	YoY%	DOM	New Listings	Active Listings	Pending Sales	Months Inventory	Close To OLP
All(New and Existing)																
Residential (SF/COND/TH)	11	-8.3%	\$2,573,551	0.1%	\$233,959	9.2%	\$229,000	12.3%	\$123	4.8%	95	29	69	24	3.6	87.9%
YTD:	26	0.0%	\$6,680,551	17.9%	\$256,944	17.9%	\$229,000	11.7%	\$122	7.1%	78	57	67	45		92.3%
Single Family	11	-8.3%	\$2,573,551	0.1%	\$233,959	9.2%	\$229,000	12.3%	\$123	4.8%	95	29	69	24	3.6	87.9%
YTD:	26	0.0%	\$6,680,551	17.9%	\$256,944	17.9%	\$229,000	11.7%	\$122	7.1%	78	57	67	45		92.3%
Townhouse	-	0.0%	-	0.0%	-	0.0%	-	0.0%	-	0.0%	-	-	-	-	-	0.0%
YTD:	-	0.0%	-	0.0%	-	0.0%	-	0.0%	-	0.0%	-	-	-	-	-	0.0%
Condominium	-	0.0%	-	0.0%	-	0.0%	-	0.0%	-	0.0%	-	-	-	-	-	0.0%
YTD:	-	0.0%	-	0.0%	-	0.0%	-	0.0%	-	0.0%	-	-	-	-	-	0.0%
Existing Home																
Residential (SF/COND/TH)	6	-25.0%	\$693,000	-54.8%	\$115,500	-39.7%	\$107,500	-46.9%	\$77	-24.9%	87	26	64	15	4.6	81.7%
YTD:	16	-20.0%	\$3,103,000	-27.5%	\$193,938	-9.4%	\$145,000	-31.8%	\$92	-10.7%	80	44	60	26		90.3%
Single Family	6	-25.0%	\$693,000	-54.8%	\$115,500	-39.7%	\$107,500	-46.9%	\$77	-24.9%	87	26	64	15	4.6	81.7%
YTD:	16	-20.0%	\$3,103,000	-27.5%	\$193,938	-9.4%	\$145,000	-31.8%	\$92	-10.7%	80	44	60	26		90.3%
Townhouse	-	0.0%	-	0.0%	-	0.0%	-	0.0%	-	0.0%	-	-	-	-	-	0.0%
YTD:	-	0.0%	-	0.0%	-	0.0%	-	0.0%	-	0.0%	-	-	-	-	-	0.0%
Condominium	-	0.0%	-	0.0%	-	0.0%	-	0.0%	-	0.0%	-	-	-	-	-	0.0%
YTD:	-	0.0%	-	0.0%	-	0.0%	-	0.0%	-	0.0%	-	-	-	-	-	0.0%
New Construction																
Residential (SF/COND/TH)	5	25.0%	\$1,880,551	81.0%	\$376,110	44.8%	\$442,500	111.2%	\$178	21.0%	104	3	5	9	1.0	95.3%
YTD:	10	66.7%	\$3,577,551	157.4%	\$357,755	54.4%	\$264,000	35.4%	\$169	16.1%	76	13	7	19		95.4%
Single Family	5	25.0%	\$1,880,551	81.0%	\$376,110	44.8%	\$442,500	111.2%	\$178	21.0%	104	3	5	9	1.0	95.3%
YTD:	10	66.7%	\$3,577,551	157.4%	\$357,755	54.4%	\$264,000	35.4%	\$169	16.1%	76	13	7	19		95.4%
Townhouse	-	0.0%	-	0.0%	-	0.0%	-	0.0%	-	0.0%	-	-	-	-	-	0.0%
YTD:	-	0.0%	-	0.0%	-	0.0%	-	0.0%	-	0.0%	-	-	-	-	-	0.0%
Condominium	-	0.0%	-	0.0%	-	0.0%	-	0.0%	-	0.0%	-	-	-	-	-	0.0%
YTD:	-	0.0%	-	0.0%	-	0.0%	-	0.0%	-	0.0%	-	-	-	-	-	0.0%

* Closed Sale counts for most recent 3 months are Preliminary.

Market Analysis By County: Lubbock County

Property Type	Closed Sales*	YoY%	Dollar Volume	YoY%	Average Price	YoY%	Median Price	YoY%	Price/Sqft	YoY%	DOM	New Listings	Active Listings	Pending Sales	Months Inventory	Close To OLP
All(New and Existing)																
Residential (SF/COND/TH)	337	-0.3%	\$102,684,750	3.5%	\$304,703	3.8%	\$240,000	0.0%	\$143	0.6%	60	712	1,465	468	3.6	95.0%
YTD:	602	-2.4%	\$177,556,923	-1.4%	\$294,945	1.1%	\$235,000	-1.7%	\$142	1.6%	60	1,424	1,441	870		94.5%
Single Family	334	0.0%	\$102,089,667	3.7%	\$305,658	3.7%	\$240,000	-0.7%	\$143	0.4%	60	686	1,410	458	3.5	94.9%
YTD:	593	-2.0%	\$175,736,201	-1.1%	\$296,351	0.9%	\$235,000	-2.1%	\$142	1.3%	60	1,387	1,392	854		94.4%
Townhouse	1	-66.7%	\$195,000	-68.6%	\$195,000	-5.7%	\$195,000	-4.9%	\$127	11.3%	8	23	52	3	8.2	98.5%
YTD:	6	-33.3%	\$1,198,000	-33.5%	\$199,667	-0.2%	\$195,000	2.6%	\$142	16.8%	60	32	44	8		98.6%
Condominium	2	100.0%	\$412,500	106.3%	\$206,250	3.1%	\$206,250	3.1%	\$149	-5.9%	49	3	3	7	1.5	97.2%
YTD:	3	0.0%	\$641,000	7.7%	\$213,667	7.7%	\$228,500	14.3%	\$159	13.0%	34	5	5	8		96.9%
Existing Home																
Residential (SF/COND/TH)	249	10.2%	\$74,069,269	12.2%	\$297,467	1.9%	\$240,000	3.5%	\$135	0.5%	58	561	1,144	337	3.7	94.9%
YTD:	432	-0.5%	\$124,213,516	-0.7%	\$287,531	-0.2%	\$230,500	-0.2%	\$134	1.2%	60	1,127	1,122	604		94.4%
Single Family	246	10.8%	\$73,473,842	12.7%	\$298,674	1.7%	\$240,000	2.0%	\$135	0.3%	58	537	1,091	327	3.6	94.9%
YTD:	426	0.7%	\$122,970,842	0.1%	\$288,664	-0.6%	\$232,000	-0.4%	\$134	1.0%	61	1,092	1,074	590		94.3%
Townhouse	1	-66.7%	\$195,000	-68.6%	\$195,000	-5.7%	\$195,000	-4.9%	\$127	11.3%	8	21	50	3	9.7	98.5%
YTD:	3	-62.5%	\$613,000	-62.3%	\$204,333	0.6%	\$195,000	1.3%	\$125	2.5%	21	30	43	6		99.5%
Condominium	2	100.0%	\$412,500	106.3%	\$206,250	3.1%	\$206,250	3.1%	\$149	-5.9%	49	3	3	7	1.5	97.2%
YTD:	3	0.0%	\$641,000	7.7%	\$213,667	7.7%	\$228,500	14.3%	\$159	13.0%	34	5	5	8		96.9%
New Construction																
Residential (SF/COND/TH)	88	-21.4%	\$28,604,159	-14.0%	\$325,047	9.5%	\$261,574	5.3%	\$166	4.9%	65	151	321	131	3.3	95.1%
YTD:	170	-7.1%	\$53,325,472	-2.9%	\$313,679	4.5%	\$239,000	-2.5%	\$164	3.2%	58	297	319	266		94.7%
Single Family	88	-21.4%	\$28,604,159	-14.0%	\$325,047	9.5%	\$261,574	5.3%	\$166	4.9%	65	149	319	131	3.3	95.1%
YTD:	167	-8.2%	\$52,746,985	-3.7%	\$315,850	5.0%	\$241,975	-1.4%	\$164	3.1%	57	295	317	264		94.6%
Townhouse	-	0.0%	-	0.0%	-	0.0%	-	0.0%	-	0.0%	-	2	2	-	1.7	0.0%
YTD:	3	200.0%	\$585,000	234.5%	\$195,000	11.5%	\$195,000	11.5%	\$160	30.8%	100	2	1	2		97.7%
Condominium	-	0.0%	-	0.0%	-	0.0%	-	0.0%	-	0.0%	-	-	-	-	-	0.0%
YTD:	-	0.0%	-	0.0%	-	0.0%	-	0.0%	-	0.0%	-	-	-	-	-	0.0%

* Closed Sale counts for most recent 3 months are Preliminary.

Trend Analysis By County: Hockley County

Residential, All (New and Existing)



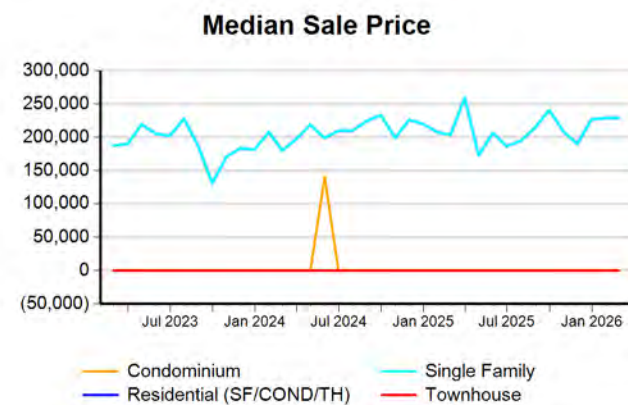
Single Family, New vs. Existing



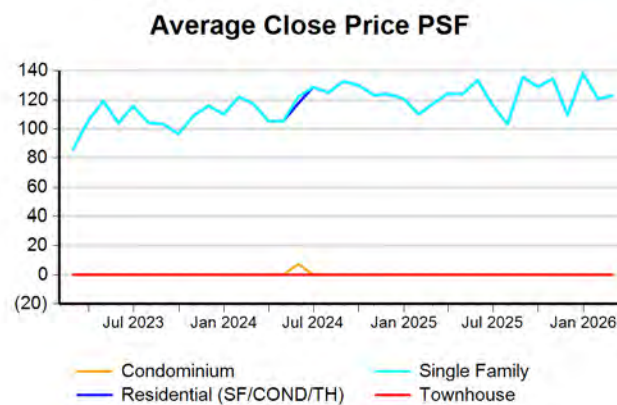
COND/TH, All (New and Existing)



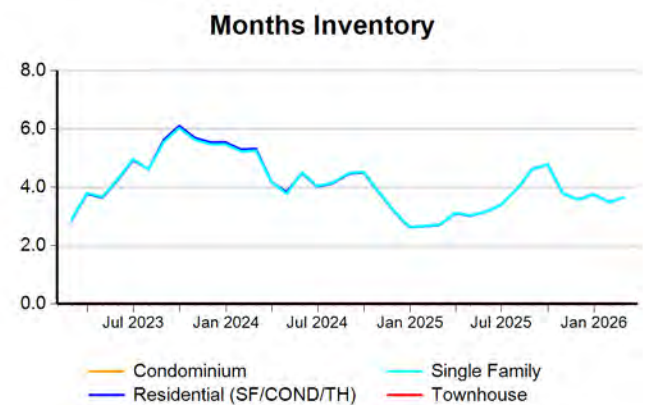
All (New and Existing) Construction



All (New and Existing) Construction



All (New and Existing) Construction



* Closed Sale counts for most recent 3 months are Preliminary.

Trend Analysis By County: Lubbock County

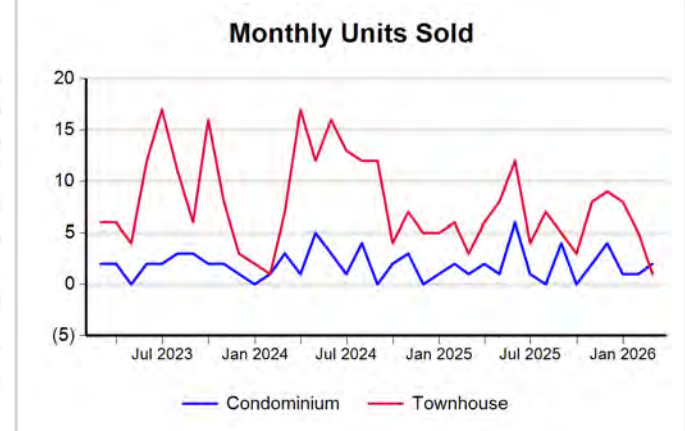
Residential, All (New and Existing)



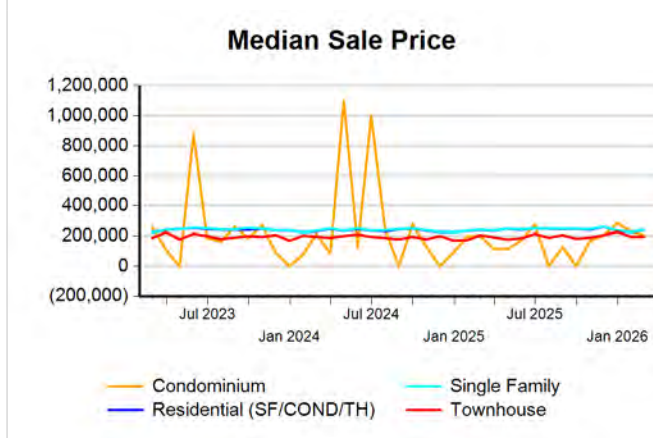
Single Family, New vs. Existing



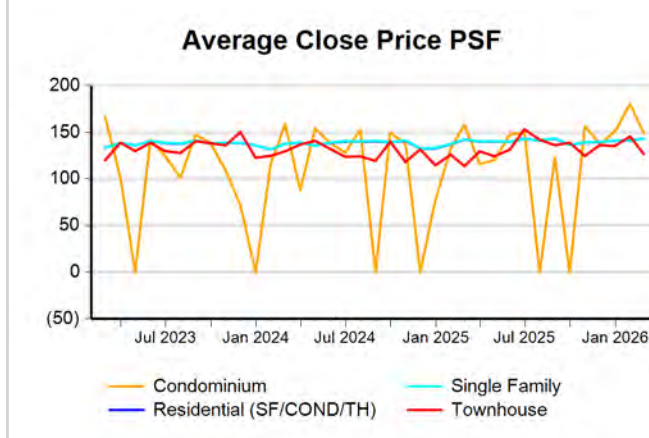
COND/TH, All (New and Existing)



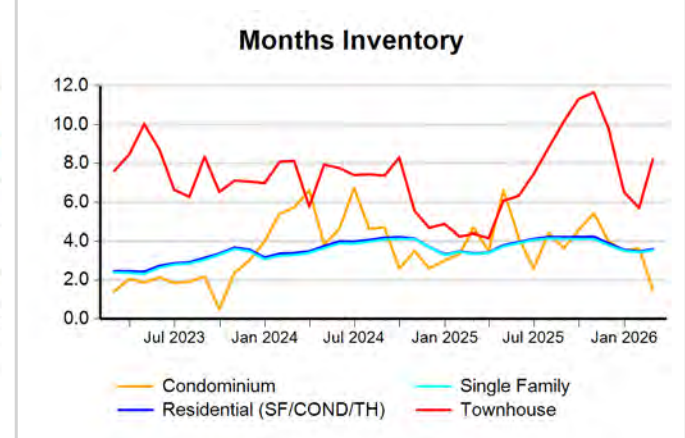
All (New and Existing) Construction



All (New and Existing) Construction



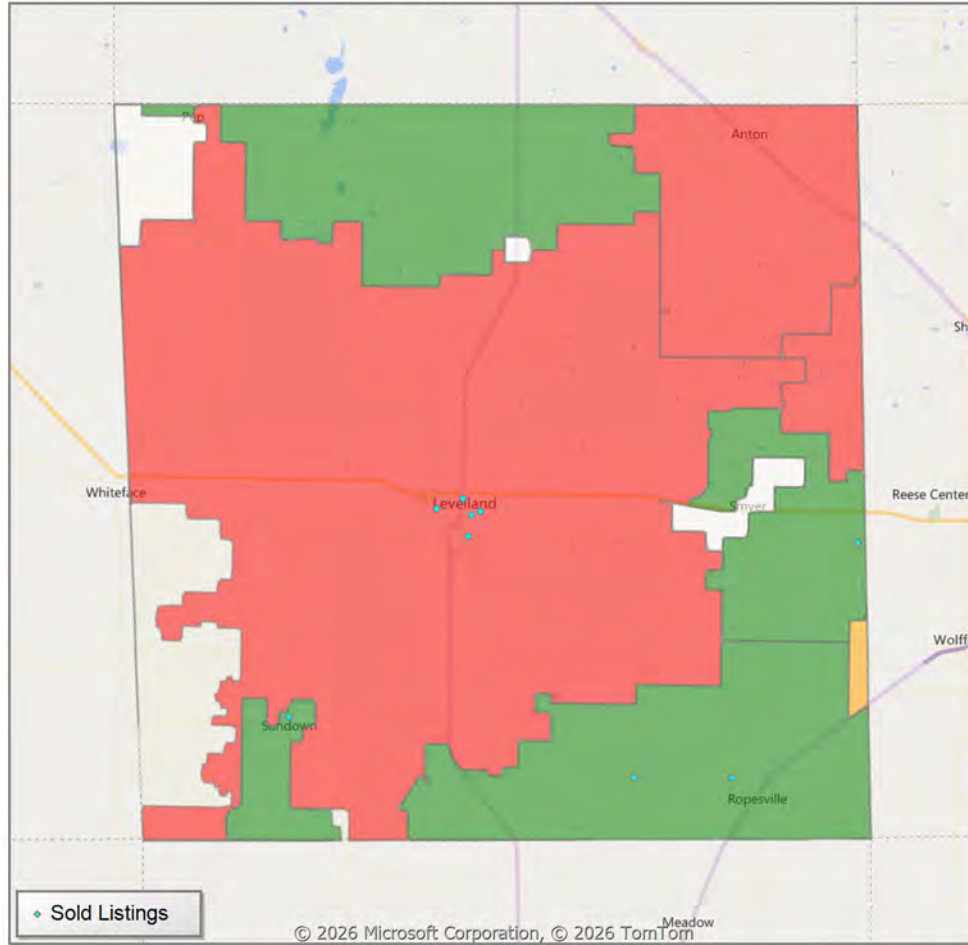
All (New and Existing) Construction



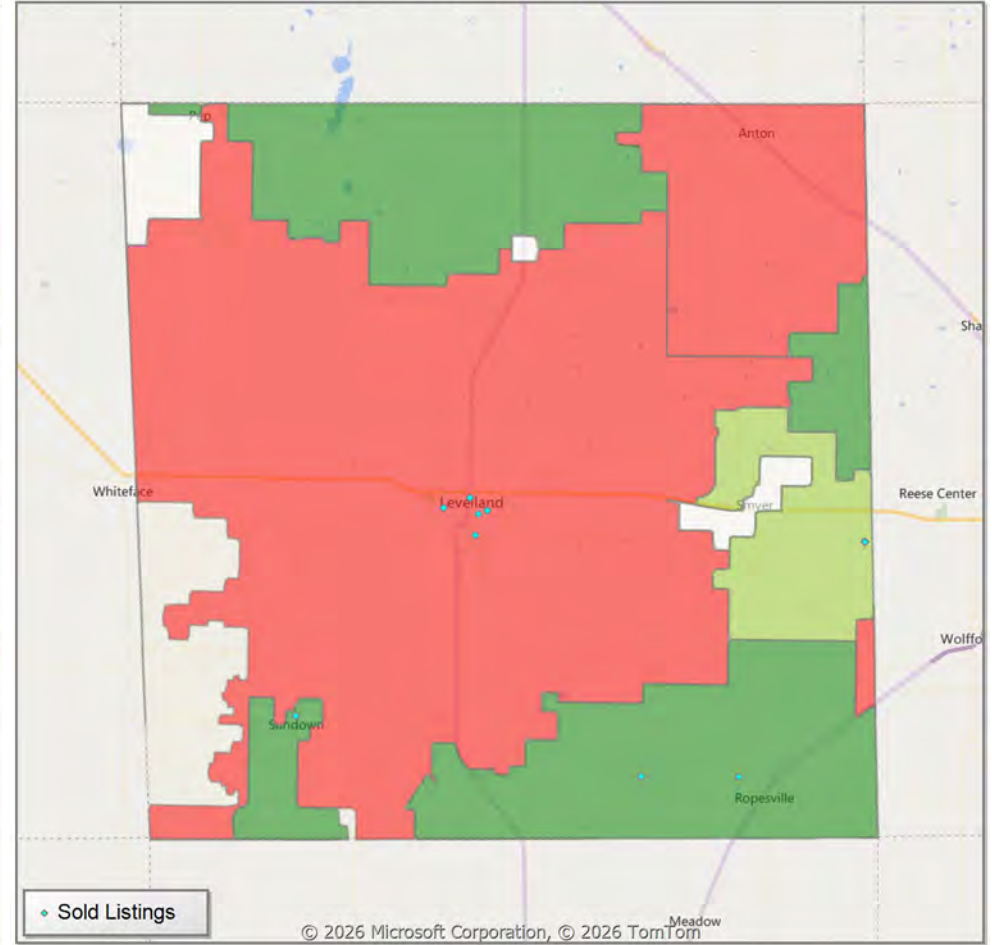
* Closed Sale counts for most recent 3 months are Preliminary.

Comparison By Zip Code* in Hockley County

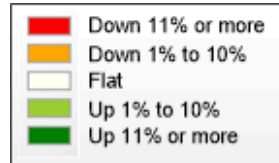
Residential Closed Sales
YoY Percentage Change**



Residential Avg Close Price Per SqFt
YoY Percentage Change**

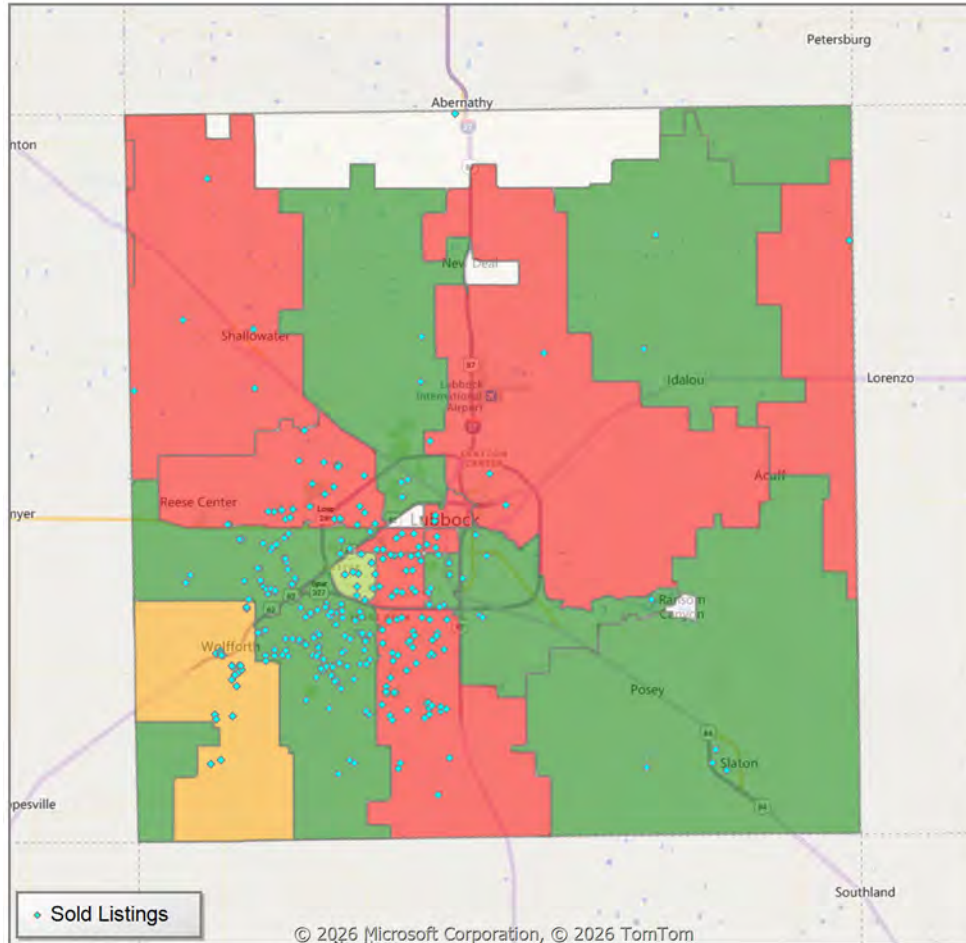


* US Census Zip Code Tabulation Area
** Residential includes Single Family, Condominium and Townhouse.

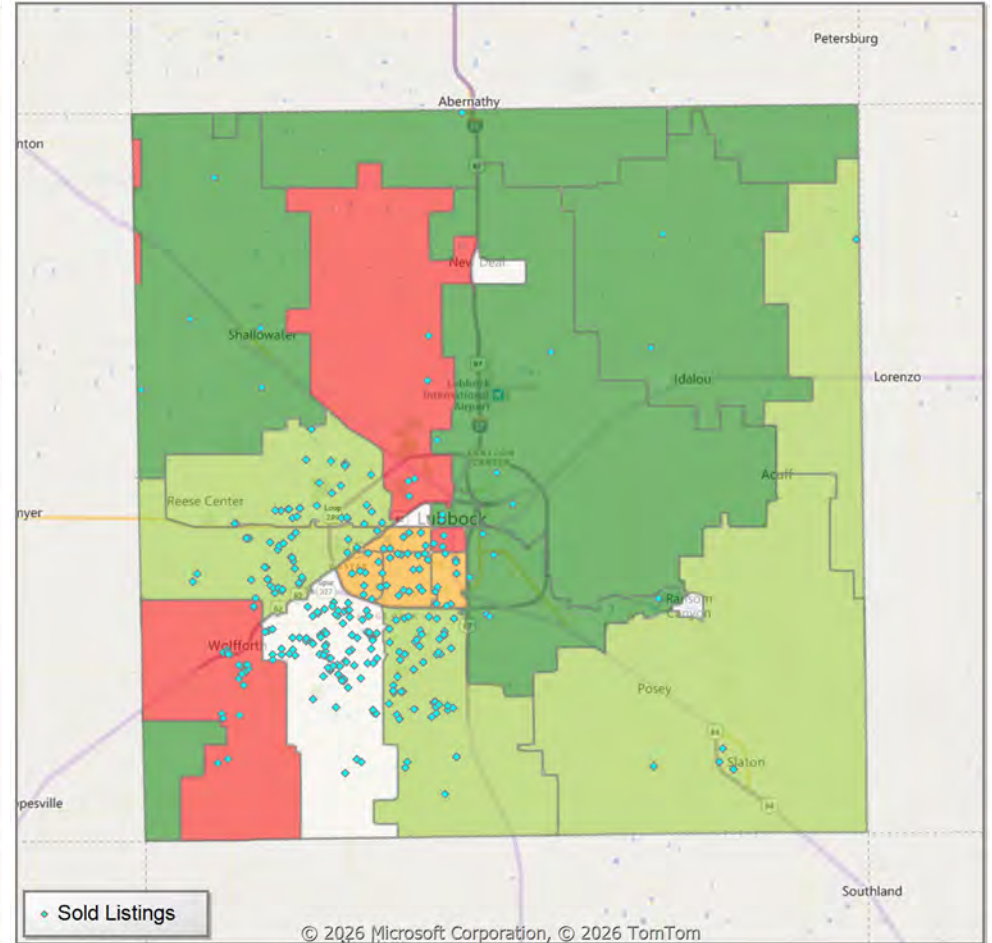


Comparison By Zip Code* in Lubbock County

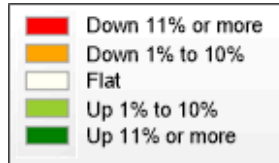
Residential Closed Sales
YoY Percentage Change**



Residential Avg Close Price Per SqFt
YoY Percentage Change**

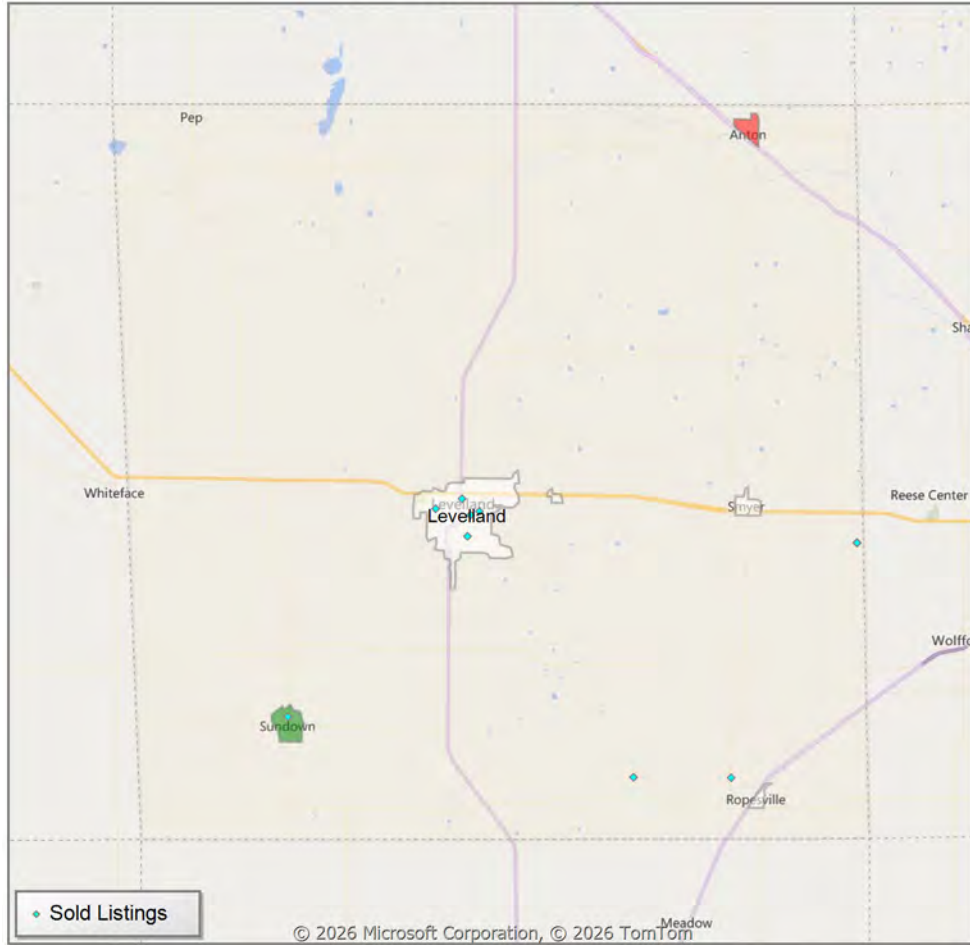


* US Census Zip Code Tabulation Area
** Residential includes Single Family, Condominium and Townhouse.

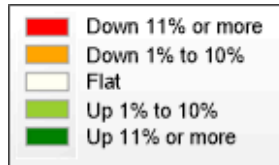
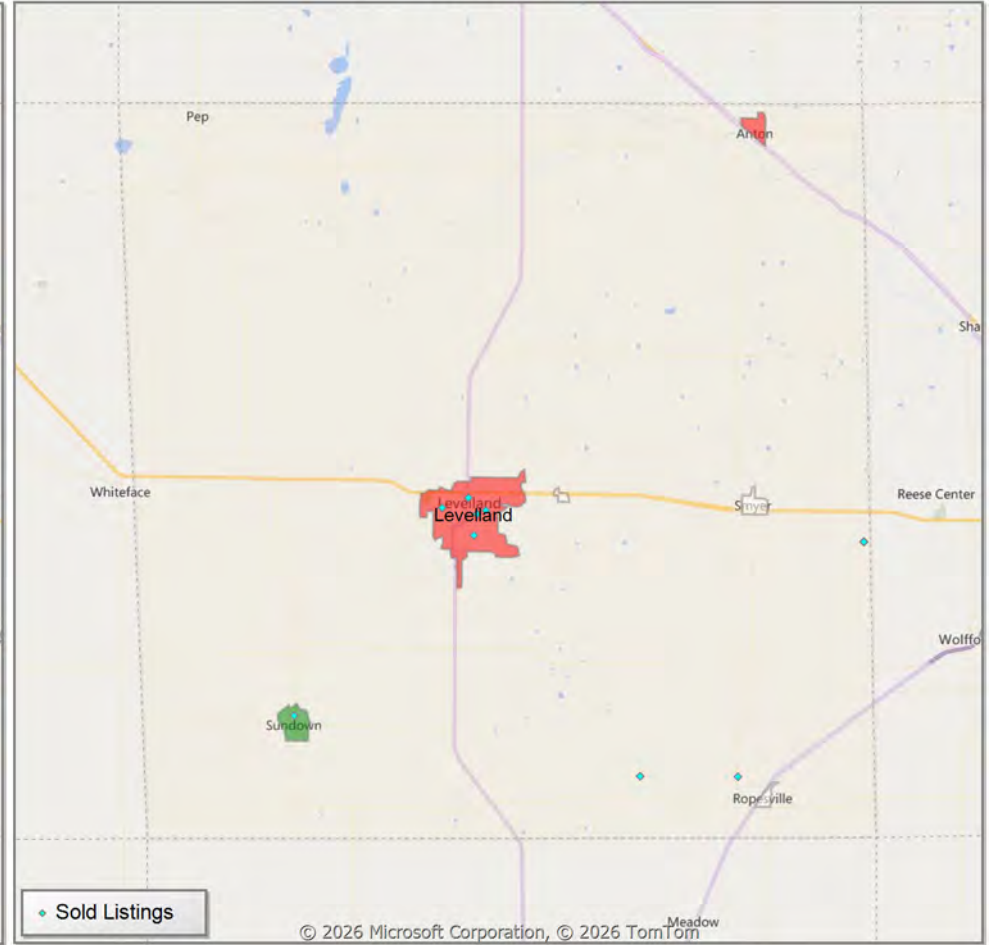


Comparison By Local Market Area* in Hockley County

Residential Closed Sales
YoY Percentage Change**



Residential Avg Close Price Per SqFt
YoY Percentage Change**

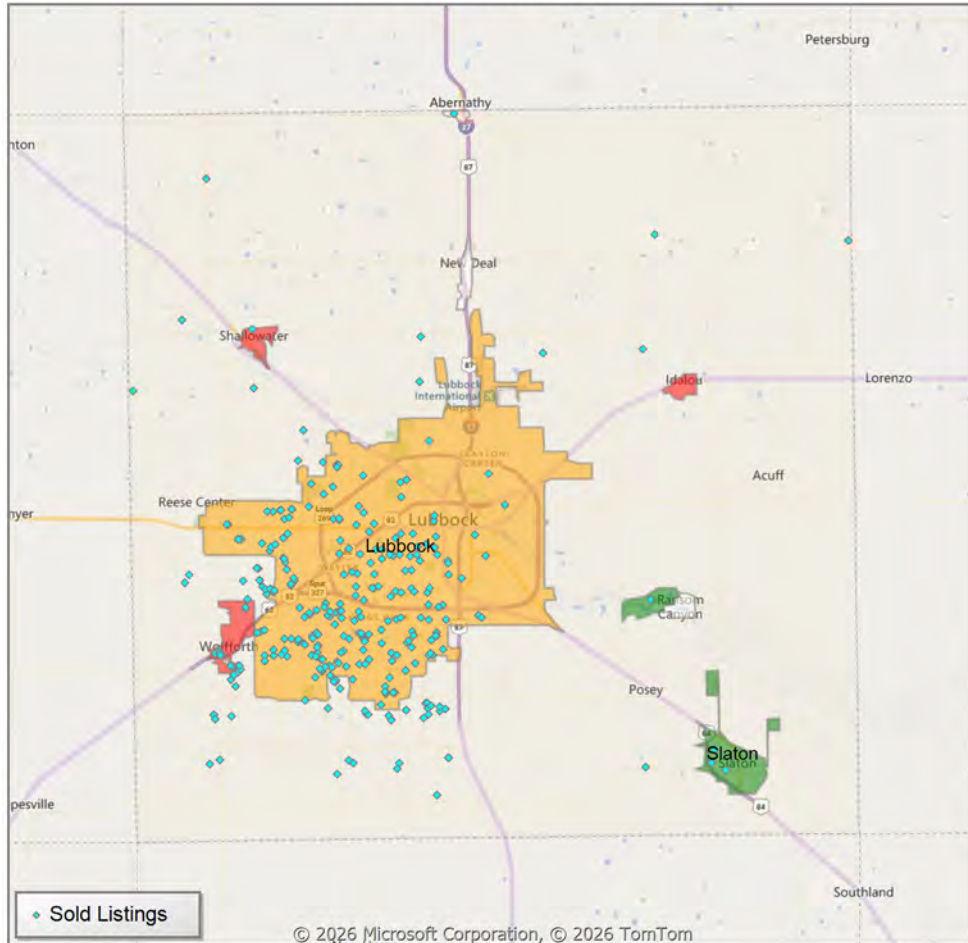


* Census Place Group

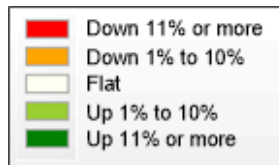
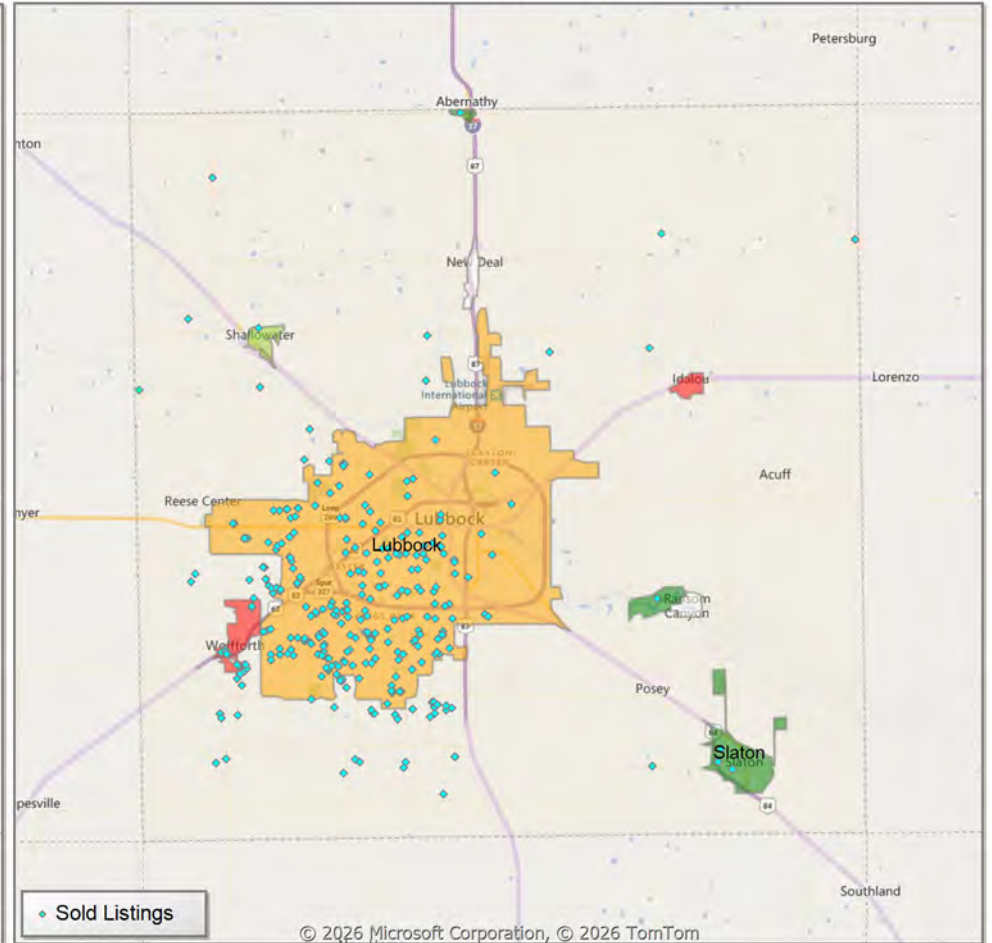
** Residential includes Single Family, Condominium and Townhouse.

Comparison By Local Market Area* in Lubbock County

Residential Closed Sales
YoY Percentage Change**



Residential Avg Close Price Per SqFt
YoY Percentage Change**



* Census Place Group

** Residential includes Single Family, Condominium and Townhouse.

Market Analysis By Local Market Area*: Abernathy

Property Type	Closed Sales**	YoY%	Dollar Volume	YoY%	Average Price	YoY%	Median Price	YoY%	Price/Sqft	YoY%	DOM	New Listings	Active Listings	Pending Sales	Months Inventory	Close To OLP
All(New and Existing)																
Residential (SF/COND/TH)	1	0.0%	\$215,000	826.7%	\$215,000	826.7%	\$215,000	826.7%	\$167	823.1%	105	2	8	-	3.4	100.0%
YTD:	6	50.0%	\$1,120,500	172.8%	\$186,750	81.8%	\$197,500	105.1%	\$119	78.8%	55	6	7	3		95.9%
Single Family	1	0.0%	\$215,000	826.7%	\$215,000	826.7%	\$215,000	826.7%	\$167	823.1%	105	2	8	-	3.4	100.0%
YTD:	6	50.0%	\$1,120,500	172.8%	\$186,750	81.8%	\$197,500	105.1%	\$119	78.8%	55	6	7	3		95.9%
Townhouse	-	0.0%	-	0.0%	-	0.0%	-	0.0%	-	0.0%	-	-	-	-	-	0.0%
YTD:	-	0.0%	-	0.0%	-	0.0%	-	0.0%	-	0.0%	-	-	-	-	-	0.0%
Condominium	-	0.0%	-	0.0%	-	0.0%	-	0.0%	-	0.0%	-	-	-	-	-	0.0%
YTD:	-	0.0%	-	0.0%	-	0.0%	-	0.0%	-	0.0%	-	-	-	-	-	0.0%
Existing Home																
Residential (SF/COND/TH)	1	0.0%	\$215,000	826.7%	\$215,000	826.7%	\$215,000	826.7%	\$167	823.1%	105	1	7	-	3.0	100.0%
YTD:	6	50.0%	\$1,120,500	172.8%	\$186,750	81.8%	\$197,500	105.1%	\$119	78.8%	55	4	6	3		95.9%
Single Family	1	0.0%	\$215,000	826.7%	\$215,000	826.7%	\$215,000	826.7%	\$167	823.1%	105	1	7	-	3.0	100.0%
YTD:	6	50.0%	\$1,120,500	172.8%	\$186,750	81.8%	\$197,500	105.1%	\$119	78.8%	55	4	6	3		95.9%
Townhouse	-	0.0%	-	0.0%	-	0.0%	-	0.0%	-	0.0%	-	-	-	-	-	0.0%
YTD:	-	0.0%	-	0.0%	-	0.0%	-	0.0%	-	0.0%	-	-	-	-	-	0.0%
Condominium	-	0.0%	-	0.0%	-	0.0%	-	0.0%	-	0.0%	-	-	-	-	-	0.0%
YTD:	-	0.0%	-	0.0%	-	0.0%	-	0.0%	-	0.0%	-	-	-	-	-	0.0%
New Construction																
Residential (SF/COND/TH)	-	0.0%	-	0.0%	-	0.0%	-	0.0%	-	0.0%	-	1	1	-	-	0.0%
YTD:	-	0.0%	-	0.0%	-	0.0%	-	0.0%	-	0.0%	-	2	1	-	-	0.0%
Single Family	-	0.0%	-	0.0%	-	0.0%	-	0.0%	-	0.0%	-	1	1	-	-	0.0%
YTD:	-	0.0%	-	0.0%	-	0.0%	-	0.0%	-	0.0%	-	2	1	-	-	0.0%
Townhouse	-	0.0%	-	0.0%	-	0.0%	-	0.0%	-	0.0%	-	-	-	-	-	0.0%
YTD:	-	0.0%	-	0.0%	-	0.0%	-	0.0%	-	0.0%	-	-	-	-	-	0.0%
Condominium	-	0.0%	-	0.0%	-	0.0%	-	0.0%	-	0.0%	-	-	-	-	-	0.0%
YTD:	-	0.0%	-	0.0%	-	0.0%	-	0.0%	-	0.0%	-	-	-	-	-	0.0%

* Local Market Area Code: 2; Type: Census Place Group
 ** Closed Sale counts for most recent 3 months are Preliminary.

Market Analysis By Local Market Area*: Anton

Property Type	Closed Sales**	YoY%	Dollar Volume	YoY%	Average Price	YoY%	Median Price	YoY%	Price/Sqft	YoY%	DOM	New Listings	Active Listings	Pending Sales	Months Inventory	Close To OLP
All(New and Existing)																
Residential (SF/COND/TH)	-	-100.0%	-	-100.0%	-	-100.0%	-	-100.0%	-	-100.0%	-	1	1	-	1.1	0.0%
YTD:	-	-100.0%	-	-100.0%	-	-100.0%	-	-100.0%	-	-100.0%	-	1	1	-		0.0%
Single Family	-	-100.0%	-	-100.0%	-	-100.0%	-	-100.0%	-	-100.0%	-	1	1	-	1.1	0.0%
YTD:	-	-100.0%	-	-100.0%	-	-100.0%	-	-100.0%	-	-100.0%	-	1	1	-		0.0%
Townhouse	-	0.0%	-	0.0%	-	0.0%	-	0.0%	-	0.0%	-	-	-	-	-	0.0%
YTD:	-	0.0%	-	0.0%	-	0.0%	-	0.0%	-	0.0%	-	-	-	-	-	0.0%
Condominium	-	0.0%	-	0.0%	-	0.0%	-	0.0%	-	0.0%	-	-	-	-	-	0.0%
YTD:	-	0.0%	-	0.0%	-	0.0%	-	0.0%	-	0.0%	-	-	-	-	-	0.0%
Existing Home																
Residential (SF/COND/TH)	-	-100.0%	-	-100.0%	-	-100.0%	-	-100.0%	-	-100.0%	-	1	1	-	1.1	0.0%
YTD:	-	-100.0%	-	-100.0%	-	-100.0%	-	-100.0%	-	-100.0%	-	1	1	-		0.0%
Single Family	-	-100.0%	-	-100.0%	-	-100.0%	-	-100.0%	-	-100.0%	-	1	1	-	1.1	0.0%
YTD:	-	-100.0%	-	-100.0%	-	-100.0%	-	-100.0%	-	-100.0%	-	1	1	-		0.0%
Townhouse	-	0.0%	-	0.0%	-	0.0%	-	0.0%	-	0.0%	-	-	-	-	-	0.0%
YTD:	-	0.0%	-	0.0%	-	0.0%	-	0.0%	-	0.0%	-	-	-	-	-	0.0%
Condominium	-	0.0%	-	0.0%	-	0.0%	-	0.0%	-	0.0%	-	-	-	-	-	0.0%
YTD:	-	0.0%	-	0.0%	-	0.0%	-	0.0%	-	0.0%	-	-	-	-	-	0.0%
New Construction																
Residential (SF/COND/TH)	-	0.0%	-	0.0%	-	0.0%	-	0.0%	-	0.0%	-	-	-	-	-	0.0%
YTD:	-	0.0%	-	0.0%	-	0.0%	-	0.0%	-	0.0%	-	-	-	-	-	0.0%
Single Family	-	0.0%	-	0.0%	-	0.0%	-	0.0%	-	0.0%	-	-	-	-	-	0.0%
YTD:	-	0.0%	-	0.0%	-	0.0%	-	0.0%	-	0.0%	-	-	-	-	-	0.0%
Townhouse	-	0.0%	-	0.0%	-	0.0%	-	0.0%	-	0.0%	-	-	-	-	-	0.0%
YTD:	-	0.0%	-	0.0%	-	0.0%	-	0.0%	-	0.0%	-	-	-	-	-	0.0%
Condominium	-	0.0%	-	0.0%	-	0.0%	-	0.0%	-	0.0%	-	-	-	-	-	0.0%
YTD:	-	0.0%	-	0.0%	-	0.0%	-	0.0%	-	0.0%	-	-	-	-	-	0.0%

* Local Market Area Code: 1014; Type: Census Place Group
 ** Closed Sale counts for most recent 3 months are Preliminary.

Market Analysis By Local Market Area*: Buffalo Springs

Property Type	Closed Sales**	YoY%	Dollar Volume	YoY%	Average Price	YoY%	Median Price	YoY%	Price/Sqft	YoY%	DOM	New Listings	Active Listings	Pending Sales	Months Inventory	Close To OLP
All(New and Existing)																
Residential (SF/COND/TH)	1	100.0%	\$445,000	100.0%	\$445,000	100.0%	\$445,000	100.0%	\$225	100.0%	5	2	10	-	7.1	98.9%
YTD:	2	100.0%	\$920,000	100.0%	\$460,000	100.0%	\$460,000	100.0%	\$238	100.0%	47	6	9	1		97.4%
Single Family	1	100.0%	\$445,000	100.0%	\$445,000	100.0%	\$445,000	100.0%	\$225	100.0%	5	2	10	-	7.1	98.9%
YTD:	2	100.0%	\$920,000	100.0%	\$460,000	100.0%	\$460,000	100.0%	\$238	100.0%	47	6	9	1		97.4%
Townhouse	-	0.0%	-	0.0%	-	0.0%	-	0.0%	-	0.0%	-	-	-	-	-	0.0%
YTD:	-	0.0%	-	0.0%	-	0.0%	-	0.0%	-	0.0%	-	-	-	-	-	0.0%
Condominium	-	0.0%	-	0.0%	-	0.0%	-	0.0%	-	0.0%	-	-	-	-	-	0.0%
YTD:	-	0.0%	-	0.0%	-	0.0%	-	0.0%	-	0.0%	-	-	-	-	-	0.0%
Existing Home																
Residential (SF/COND/TH)	1	100.0%	\$445,000	100.0%	\$445,000	100.0%	\$445,000	100.0%	\$225	100.0%	5	2	10	-	7.1	98.9%
YTD:	2	100.0%	\$920,000	100.0%	\$460,000	100.0%	\$460,000	100.0%	\$238	100.0%	47	6	9	1		97.4%
Single Family	1	100.0%	\$445,000	100.0%	\$445,000	100.0%	\$445,000	100.0%	\$225	100.0%	5	2	10	-	7.1	98.9%
YTD:	2	100.0%	\$920,000	100.0%	\$460,000	100.0%	\$460,000	100.0%	\$238	100.0%	47	6	9	1		97.4%
Townhouse	-	0.0%	-	0.0%	-	0.0%	-	0.0%	-	0.0%	-	-	-	-	-	0.0%
YTD:	-	0.0%	-	0.0%	-	0.0%	-	0.0%	-	0.0%	-	-	-	-	-	0.0%
Condominium	-	0.0%	-	0.0%	-	0.0%	-	0.0%	-	0.0%	-	-	-	-	-	0.0%
YTD:	-	0.0%	-	0.0%	-	0.0%	-	0.0%	-	0.0%	-	-	-	-	-	0.0%
New Construction																
Residential (SF/COND/TH)	-	0.0%	-	0.0%	-	0.0%	-	0.0%	-	0.0%	-	-	-	-	-	0.0%
YTD:	-	0.0%	-	0.0%	-	0.0%	-	0.0%	-	0.0%	-	-	-	-	-	0.0%
Single Family	-	0.0%	-	0.0%	-	0.0%	-	0.0%	-	0.0%	-	-	-	-	-	0.0%
YTD:	-	0.0%	-	0.0%	-	0.0%	-	0.0%	-	0.0%	-	-	-	-	-	0.0%
Townhouse	-	0.0%	-	0.0%	-	0.0%	-	0.0%	-	0.0%	-	-	-	-	-	0.0%
YTD:	-	0.0%	-	0.0%	-	0.0%	-	0.0%	-	0.0%	-	-	-	-	-	0.0%
Condominium	-	0.0%	-	0.0%	-	0.0%	-	0.0%	-	0.0%	-	-	-	-	-	0.0%
YTD:	-	0.0%	-	0.0%	-	0.0%	-	0.0%	-	0.0%	-	-	-	-	-	0.0%

* Local Market Area Code: 135; Type: Census Place Group
 ** Closed Sale counts for most recent 3 months are Preliminary.

Market Analysis By Local Market Area*: Idalou

Property Type	Closed Sales**	YoY%	Dollar Volume	YoY%	Average Price	YoY%	Median Price	YoY%	Price/Sqft	YoY%	DOM	New Listings	Active Listings	Pending Sales	Months Inventory	Close To OLP
All(New and Existing)																
Residential (SF/COND/TH)	-	-100.0%	-	-100.0%	-	-100.0%	-	-100.0%	-	-100.0%	-	4	6	4	4.0	0.0%
YTD:	-	-100.0%	-	-100.0%	-	-100.0%	-	-100.0%	-	-100.0%	-	9	7	4		0.0%
Single Family	-	-100.0%	-	-100.0%	-	-100.0%	-	-100.0%	-	-100.0%	-	4	6	4	4.0	0.0%
YTD:	-	-100.0%	-	-100.0%	-	-100.0%	-	-100.0%	-	-100.0%	-	9	7	4		0.0%
Townhouse	-	0.0%	-	0.0%	-	0.0%	-	0.0%	-	0.0%	-	-	-	-	-	0.0%
YTD:	-	0.0%	-	0.0%	-	0.0%	-	0.0%	-	0.0%	-	-	-	-	-	0.0%
Condominium	-	0.0%	-	0.0%	-	0.0%	-	0.0%	-	0.0%	-	-	-	-	-	0.0%
YTD:	-	0.0%	-	0.0%	-	0.0%	-	0.0%	-	0.0%	-	-	-	-	-	0.0%
Existing Home																
Residential (SF/COND/TH)	-	-100.0%	-	-100.0%	-	-100.0%	-	-100.0%	-	-100.0%	-	4	6	4	4.0	0.0%
YTD:	-	-100.0%	-	-100.0%	-	-100.0%	-	-100.0%	-	-100.0%	-	9	7	4		0.0%
Single Family	-	-100.0%	-	-100.0%	-	-100.0%	-	-100.0%	-	-100.0%	-	4	6	4	4.0	0.0%
YTD:	-	-100.0%	-	-100.0%	-	-100.0%	-	-100.0%	-	-100.0%	-	9	7	4		0.0%
Townhouse	-	0.0%	-	0.0%	-	0.0%	-	0.0%	-	0.0%	-	-	-	-	-	0.0%
YTD:	-	0.0%	-	0.0%	-	0.0%	-	0.0%	-	0.0%	-	-	-	-	-	0.0%
Condominium	-	0.0%	-	0.0%	-	0.0%	-	0.0%	-	0.0%	-	-	-	-	-	0.0%
YTD:	-	0.0%	-	0.0%	-	0.0%	-	0.0%	-	0.0%	-	-	-	-	-	0.0%
New Construction																
Residential (SF/COND/TH)	-	0.0%	-	0.0%	-	0.0%	-	0.0%	-	0.0%	-	-	-	-	-	0.0%
YTD:	-	0.0%	-	0.0%	-	0.0%	-	0.0%	-	0.0%	-	-	-	-	-	0.0%
Single Family	-	0.0%	-	0.0%	-	0.0%	-	0.0%	-	0.0%	-	-	-	-	-	0.0%
YTD:	-	0.0%	-	0.0%	-	0.0%	-	0.0%	-	0.0%	-	-	-	-	-	0.0%
Townhouse	-	0.0%	-	0.0%	-	0.0%	-	0.0%	-	0.0%	-	-	-	-	-	0.0%
YTD:	-	0.0%	-	0.0%	-	0.0%	-	0.0%	-	0.0%	-	-	-	-	-	0.0%
Condominium	-	0.0%	-	0.0%	-	0.0%	-	0.0%	-	0.0%	-	-	-	-	-	0.0%
YTD:	-	0.0%	-	0.0%	-	0.0%	-	0.0%	-	0.0%	-	-	-	-	-	0.0%

* Local Market Area Code: 456; Type: Census Place Group
 ** Closed Sale counts for most recent 3 months are Preliminary.

Market Analysis By Local Market Area*: Levelland

Property Type	Closed Sales**	YoY%	Dollar Volume	YoY%	Average Price	YoY%	Median Price	YoY%	Price/Sqft	YoY%	DOM	New Listings	Active Listings	Pending Sales	Months Inventory	Close To OLP
All(New and Existing)																
Residential (SF/COND/TH)	5	0.0%	\$583,000	-40.9%	\$116,600	-40.9%	\$105,000	-53.7%	\$74	-24.2%	101	17	40	12	4.6	78.1%
YTD:	13	0.0%	\$2,232,000	-21.6%	\$171,692	-21.6%	\$155,000	-31.7%	\$90	-10.3%	93	29	39	19		87.7%
Single Family	5	0.0%	\$583,000	-40.9%	\$116,600	-40.9%	\$105,000	-53.7%	\$74	-24.2%	101	17	40	12	4.6	78.1%
YTD:	13	0.0%	\$2,232,000	-21.6%	\$171,692	-21.6%	\$155,000	-31.7%	\$90	-10.3%	93	29	39	19		87.7%
Townhouse	-	0.0%	-	0.0%	-	0.0%	-	0.0%	-	0.0%	-	-	-	-	-	0.0%
YTD:	-	0.0%	-	0.0%	-	0.0%	-	0.0%	-	0.0%	-	-	-	-	-	0.0%
Condominium	-	0.0%	-	0.0%	-	0.0%	-	0.0%	-	0.0%	-	-	-	-	-	0.0%
YTD:	-	0.0%	-	0.0%	-	0.0%	-	0.0%	-	0.0%	-	-	-	-	-	0.0%
Existing Home																
Residential (SF/COND/TH)	5	0.0%	\$583,000	-40.9%	\$116,600	-40.9%	\$105,000	-53.7%	\$74	-24.2%	101	17	40	12	4.7	78.1%
YTD:	13	0.0%	\$2,232,000	-21.6%	\$171,692	-21.6%	\$155,000	-31.7%	\$90	-10.3%	93	29	39	19		87.7%
Single Family	5	0.0%	\$583,000	-40.9%	\$116,600	-40.9%	\$105,000	-53.7%	\$74	-24.2%	101	17	40	12	4.7	78.1%
YTD:	13	0.0%	\$2,232,000	-21.6%	\$171,692	-21.6%	\$155,000	-31.7%	\$90	-10.3%	93	29	39	19		87.7%
Townhouse	-	0.0%	-	0.0%	-	0.0%	-	0.0%	-	0.0%	-	-	-	-	-	0.0%
YTD:	-	0.0%	-	0.0%	-	0.0%	-	0.0%	-	0.0%	-	-	-	-	-	0.0%
Condominium	-	0.0%	-	0.0%	-	0.0%	-	0.0%	-	0.0%	-	-	-	-	-	0.0%
YTD:	-	0.0%	-	0.0%	-	0.0%	-	0.0%	-	0.0%	-	-	-	-	-	0.0%
New Construction																
Residential (SF/COND/TH)	-	0.0%	-	0.0%	-	0.0%	-	0.0%	-	0.0%	-	-	-	-	-	0.0%
YTD:	-	0.0%	-	0.0%	-	0.0%	-	0.0%	-	0.0%	-	-	-	-	-	0.0%
Single Family	-	0.0%	-	0.0%	-	0.0%	-	0.0%	-	0.0%	-	-	-	-	-	0.0%
YTD:	-	0.0%	-	0.0%	-	0.0%	-	0.0%	-	0.0%	-	-	-	-	-	0.0%
Townhouse	-	0.0%	-	0.0%	-	0.0%	-	0.0%	-	0.0%	-	-	-	-	-	0.0%
YTD:	-	0.0%	-	0.0%	-	0.0%	-	0.0%	-	0.0%	-	-	-	-	-	0.0%
Condominium	-	0.0%	-	0.0%	-	0.0%	-	0.0%	-	0.0%	-	-	-	-	-	0.0%
YTD:	-	0.0%	-	0.0%	-	0.0%	-	0.0%	-	0.0%	-	-	-	-	-	0.0%

* Local Market Area Code: 220; Type: Census Place Group
 ** Closed Sale counts for most recent 3 months are Preliminary.

Market Analysis By Local Market Area*: Lubbock

Property Type	Closed Sales**	YoY%	Dollar Volume	YoY%	Average Price	YoY%	Median Price	YoY%	Price/Sqft	YoY%	DOM	New Listings	Active Listings	Pending Sales	Months Inventory	Close To OLP
All(New and Existing)																
Residential (SF/COND/TH)	237	-2.1%	\$64,088,385	-7.0%	\$270,415	-5.1%	\$228,273	0.2%	\$134	-2.5%	58	492	987	338	3.4	95.0%
YTD:	424	-4.5%	\$111,673,478	-9.2%	\$263,381	-5.0%	\$225,000	-2.2%	\$132	-1.6%	59	976	974	612		94.3%
Single Family	235	-1.3%	\$63,679,825	-6.5%	\$270,978	-5.3%	\$228,273	-0.8%	\$134	-2.7%	58	466	936	328	3.3	95.0%
YTD:	420	-3.5%	\$110,797,436	-8.6%	\$263,803	-5.3%	\$224,900	-2.2%	\$132	-1.8%	59	942	929	600		94.3%
Townhouse	-	-100.0%	-	-100.0%	-	-100.0%	-	-100.0%	-	-100.0%	-	23	48	3	10.1	0.0%
YTD:	1	-83.3%	\$238,000	-81.1%	\$238,000	13.5%	\$238,000	20.5%	\$124	5.9%	7	29	40	4		100.0%
Condominium	2	100.0%	\$412,500	106.3%	\$206,250	3.1%	\$206,250	3.1%	\$149	-5.9%	49	3	3	7	1.5	97.2%
YTD:	3	0.0%	\$641,000	7.7%	\$213,667	7.7%	\$228,500	14.3%	\$159	13.0%	34	5	5	8		96.9%
Existing Home																
Residential (SF/COND/TH)	188	-1.6%	\$48,671,290	-11.8%	\$258,890	-10.4%	\$225,000	0.0%	\$126	-4.5%	58	440	879	279	3.5	95.1%
YTD:	338	-4.8%	\$85,764,965	-13.0%	\$253,743	-8.6%	\$214,500	-4.7%	\$125	-3.3%	60	869	862	487		94.3%
Single Family	186	-0.5%	\$48,262,299	-11.2%	\$259,475	-10.8%	\$225,000	-2.2%	\$126	-4.8%	58	416	830	269	3.4	95.1%
YTD:	334	-3.5%	\$84,888,452	-12.2%	\$254,157	-9.0%	\$213,000	-5.3%	\$125	-3.6%	60	837	819	475		94.3%
Townhouse	-	-100.0%	-	-100.0%	-	-100.0%	-	-100.0%	-	-100.0%	-	21	46	3	10.8	0.0%
YTD:	1	-83.3%	\$238,000	-81.1%	\$238,000	13.5%	\$238,000	20.5%	\$124	5.9%	7	27	38	4		100.0%
Condominium	2	100.0%	\$412,500	106.3%	\$206,250	3.1%	\$206,250	3.1%	\$149	-5.9%	49	3	3	7	1.5	97.2%
YTD:	3	0.0%	\$641,000	7.7%	\$213,667	7.7%	\$228,500	14.3%	\$159	13.0%	34	5	5	8		96.9%
New Construction																
Residential (SF/COND/TH)	49	-3.9%	\$15,391,643	12.0%	\$314,115	16.5%	\$237,875	0.0%	\$163	4.3%	57	52	108	59	2.4	94.7%
YTD:	86	-3.4%	\$25,888,329	5.7%	\$301,027	9.4%	\$229,500	-3.6%	\$160	3.9%	55	107	112	125		94.3%
Single Family	50	-2.0%	\$15,705,758	14.2%	\$314,115	16.5%	\$237,875	0.0%	\$163	4.3%	57	50	106	59	2.4	94.7%
YTD:	87	-2.3%	\$26,189,356	6.9%	\$301,027	9.4%	\$229,500	-3.6%	\$160	3.9%	55	105	110	125		94.3%
Townhouse	-	0.0%	-	0.0%	-	0.0%	-	0.0%	-	0.0%	-	2	2	-	4.0	0.0%
YTD:	-	0.0%	-	0.0%	-	0.0%	-	0.0%	-	0.0%	-	2	1	-		0.0%
Condominium	-	0.0%	-	0.0%	-	0.0%	-	0.0%	-	0.0%	-	-	-	-	-	0.0%
YTD:	-	0.0%	-	0.0%	-	0.0%	-	0.0%	-	0.0%	-	-	-	-		0.0%

* Local Market Area Code: 596; Type: Census Place Group
 ** Closed Sale counts for most recent 3 months are Preliminary.

Market Analysis By Local Market Area*: New Deal

Property Type	Closed Sales**	YoY%	Dollar Volume	YoY%	Average Price	YoY%	Median Price	YoY%	Price/Sqft	YoY%	DOM	New Listings	Active Listings	Pending Sales	Months Inventory	Close To OLP
All(New and Existing)																
Residential (SF/COND/TH)	-	0.0%	-	0.0%	-	0.0%	-	0.0%	-	0.0%	-	1	-	1	-	0.0%
YTD:	-	0.0%	-	0.0%	-	0.0%	-	0.0%	-	0.0%	-	1	1	1	-	0.0%
Single Family	-	0.0%	-	0.0%	-	0.0%	-	0.0%	-	0.0%	-	1	-	1	-	0.0%
YTD:	-	0.0%	-	0.0%	-	0.0%	-	0.0%	-	0.0%	-	1	1	1	-	0.0%
Townhouse	-	0.0%	-	0.0%	-	0.0%	-	0.0%	-	0.0%	-	-	-	-	-	0.0%
YTD:	-	0.0%	-	0.0%	-	0.0%	-	0.0%	-	0.0%	-	-	-	-	-	0.0%
Condominium	-	0.0%	-	0.0%	-	0.0%	-	0.0%	-	0.0%	-	-	-	-	-	0.0%
YTD:	-	0.0%	-	0.0%	-	0.0%	-	0.0%	-	0.0%	-	-	-	-	-	0.0%
Existing Home																
Residential (SF/COND/TH)	-	0.0%	-	0.0%	-	0.0%	-	0.0%	-	0.0%	-	1	-	1	-	0.0%
YTD:	-	0.0%	-	0.0%	-	0.0%	-	0.0%	-	0.0%	-	1	1	1	-	0.0%
Single Family	-	0.0%	-	0.0%	-	0.0%	-	0.0%	-	0.0%	-	1	-	1	-	0.0%
YTD:	-	0.0%	-	0.0%	-	0.0%	-	0.0%	-	0.0%	-	1	1	1	-	0.0%
Townhouse	-	0.0%	-	0.0%	-	0.0%	-	0.0%	-	0.0%	-	-	-	-	-	0.0%
YTD:	-	0.0%	-	0.0%	-	0.0%	-	0.0%	-	0.0%	-	-	-	-	-	0.0%
Condominium	-	0.0%	-	0.0%	-	0.0%	-	0.0%	-	0.0%	-	-	-	-	-	0.0%
YTD:	-	0.0%	-	0.0%	-	0.0%	-	0.0%	-	0.0%	-	-	-	-	-	0.0%
New Construction																
Residential (SF/COND/TH)	-	0.0%	-	0.0%	-	0.0%	-	0.0%	-	0.0%	-	-	-	-	-	0.0%
YTD:	-	0.0%	-	0.0%	-	0.0%	-	0.0%	-	0.0%	-	-	-	-	-	0.0%
Single Family	-	0.0%	-	0.0%	-	0.0%	-	0.0%	-	0.0%	-	-	-	-	-	0.0%
YTD:	-	0.0%	-	0.0%	-	0.0%	-	0.0%	-	0.0%	-	-	-	-	-	0.0%
Townhouse	-	0.0%	-	0.0%	-	0.0%	-	0.0%	-	0.0%	-	-	-	-	-	0.0%
YTD:	-	0.0%	-	0.0%	-	0.0%	-	0.0%	-	0.0%	-	-	-	-	-	0.0%
Condominium	-	0.0%	-	0.0%	-	0.0%	-	0.0%	-	0.0%	-	-	-	-	-	0.0%
YTD:	-	0.0%	-	0.0%	-	0.0%	-	0.0%	-	0.0%	-	-	-	-	-	0.0%

* Local Market Area Code: 700; Type: Census Place Group
 ** Closed Sale counts for most recent 3 months are Preliminary.

Market Analysis By Local Market Area*: Ransom Canyon

Property Type	Closed Sales**	YoY%	Dollar Volume	YoY%	Average Price	YoY%	Median Price	YoY%	Price/Sqft	YoY%	DOM	New Listings	Active Listings	Pending Sales	Months Inventory	Close To OLP
All(New and Existing)																
Residential (SF/COND/TH)	-	0.0%	-	0.0%	-	0.0%	-	0.0%	-	0.0%	-	5	14	4	6.0	0.0%
YTD:	4	33.3%	\$2,002,444	115.3%	\$500,611	61.5%	\$454,722	62.4%	\$150	25.1%	133	12	13	4		85.6%
Single Family	-	0.0%	-	0.0%	-	0.0%	-	0.0%	-	0.0%	-	5	14	4	6.0	0.0%
YTD:	4	33.3%	\$2,002,444	115.3%	\$500,611	61.5%	\$454,722	62.4%	\$150	25.1%	133	12	13	4		85.6%
Townhouse	-	0.0%	-	0.0%	-	0.0%	-	0.0%	-	0.0%	-	-	-	-	-	0.0%
YTD:	-	0.0%	-	0.0%	-	0.0%	-	0.0%	-	0.0%	-	-	-	-	-	0.0%
Condominium	-	0.0%	-	0.0%	-	0.0%	-	0.0%	-	0.0%	-	-	-	-	-	0.0%
YTD:	-	0.0%	-	0.0%	-	0.0%	-	0.0%	-	0.0%	-	-	-	-	-	0.0%
Existing Home																
Residential (SF/COND/TH)	-	0.0%	-	0.0%	-	0.0%	-	0.0%	-	0.0%	-	5	14	4	6.0	0.0%
YTD:	4	33.3%	\$2,002,444	115.3%	\$500,611	61.5%	\$454,722	62.4%	\$150	25.1%	133	12	13	4		85.6%
Single Family	-	0.0%	-	0.0%	-	0.0%	-	0.0%	-	0.0%	-	5	14	4	6.0	0.0%
YTD:	4	33.3%	\$2,002,444	115.3%	\$500,611	61.5%	\$454,722	62.4%	\$150	25.1%	133	12	13	4		85.6%
Townhouse	-	0.0%	-	0.0%	-	0.0%	-	0.0%	-	0.0%	-	-	-	-	-	0.0%
YTD:	-	0.0%	-	0.0%	-	0.0%	-	0.0%	-	0.0%	-	-	-	-	-	0.0%
Condominium	-	0.0%	-	0.0%	-	0.0%	-	0.0%	-	0.0%	-	-	-	-	-	0.0%
YTD:	-	0.0%	-	0.0%	-	0.0%	-	0.0%	-	0.0%	-	-	-	-	-	0.0%
New Construction																
Residential (SF/COND/TH)	-	0.0%	-	0.0%	-	0.0%	-	0.0%	-	0.0%	-	-	-	-	-	0.0%
YTD:	-	0.0%	-	0.0%	-	0.0%	-	0.0%	-	0.0%	-	-	-	-	-	0.0%
Single Family	-	0.0%	-	0.0%	-	0.0%	-	0.0%	-	0.0%	-	-	-	-	-	0.0%
YTD:	-	0.0%	-	0.0%	-	0.0%	-	0.0%	-	0.0%	-	-	-	-	-	0.0%
Townhouse	-	0.0%	-	0.0%	-	0.0%	-	0.0%	-	0.0%	-	-	-	-	-	0.0%
YTD:	-	0.0%	-	0.0%	-	0.0%	-	0.0%	-	0.0%	-	-	-	-	-	0.0%
Condominium	-	0.0%	-	0.0%	-	0.0%	-	0.0%	-	0.0%	-	-	-	-	-	0.0%
YTD:	-	0.0%	-	0.0%	-	0.0%	-	0.0%	-	0.0%	-	-	-	-	-	0.0%

* Local Market Area Code: 826; Type: Census Place Group
 ** Closed Sale counts for most recent 3 months are Preliminary.

Market Analysis By Local Market Area*: Ropesville

Property Type	Closed Sales**	YoY%	Dollar Volume	YoY%	Average Price	YoY%	Median Price	YoY%	Price/Sqft	YoY%	DOM	New Listings	Active Listings	Pending Sales	Months Inventory	Close To OLP
All(New and Existing)																
Residential (SF/COND/TH)	-	0.0%	-	0.0%	-	0.0%	-	0.0%	-	0.0%	-	-	-	-	-	0.0%
YTD:	-	0.0%	-	0.0%	-	0.0%	-	0.0%	-	0.0%	-	-	-	-	-	0.0%
Single Family	-	0.0%	-	0.0%	-	0.0%	-	0.0%	-	0.0%	-	-	-	-	-	0.0%
YTD:	-	0.0%	-	0.0%	-	0.0%	-	0.0%	-	0.0%	-	-	-	-	-	0.0%
Townhouse	-	0.0%	-	0.0%	-	0.0%	-	0.0%	-	0.0%	-	-	-	-	-	0.0%
YTD:	-	0.0%	-	0.0%	-	0.0%	-	0.0%	-	0.0%	-	-	-	-	-	0.0%
Condominium	-	0.0%	-	0.0%	-	0.0%	-	0.0%	-	0.0%	-	-	-	-	-	0.0%
YTD:	-	0.0%	-	0.0%	-	0.0%	-	0.0%	-	0.0%	-	-	-	-	-	0.0%
Existing Home																
Residential (SF/COND/TH)	-	0.0%	-	0.0%	-	0.0%	-	0.0%	-	0.0%	-	-	-	-	-	0.0%
YTD:	-	0.0%	-	0.0%	-	0.0%	-	0.0%	-	0.0%	-	-	-	-	-	0.0%
Single Family	-	0.0%	-	0.0%	-	0.0%	-	0.0%	-	0.0%	-	-	-	-	-	0.0%
YTD:	-	0.0%	-	0.0%	-	0.0%	-	0.0%	-	0.0%	-	-	-	-	-	0.0%
Townhouse	-	0.0%	-	0.0%	-	0.0%	-	0.0%	-	0.0%	-	-	-	-	-	0.0%
YTD:	-	0.0%	-	0.0%	-	0.0%	-	0.0%	-	0.0%	-	-	-	-	-	0.0%
Condominium	-	0.0%	-	0.0%	-	0.0%	-	0.0%	-	0.0%	-	-	-	-	-	0.0%
YTD:	-	0.0%	-	0.0%	-	0.0%	-	0.0%	-	0.0%	-	-	-	-	-	0.0%
New Construction																
Residential (SF/COND/TH)	-	0.0%	-	0.0%	-	0.0%	-	0.0%	-	0.0%	-	-	-	-	-	0.0%
YTD:	-	0.0%	-	0.0%	-	0.0%	-	0.0%	-	0.0%	-	-	-	-	-	0.0%
Single Family	-	0.0%	-	0.0%	-	0.0%	-	0.0%	-	0.0%	-	-	-	-	-	0.0%
YTD:	-	0.0%	-	0.0%	-	0.0%	-	0.0%	-	0.0%	-	-	-	-	-	0.0%
Townhouse	-	0.0%	-	0.0%	-	0.0%	-	0.0%	-	0.0%	-	-	-	-	-	0.0%
YTD:	-	0.0%	-	0.0%	-	0.0%	-	0.0%	-	0.0%	-	-	-	-	-	0.0%
Condominium	-	0.0%	-	0.0%	-	0.0%	-	0.0%	-	0.0%	-	-	-	-	-	0.0%
YTD:	-	0.0%	-	0.0%	-	0.0%	-	0.0%	-	0.0%	-	-	-	-	-	0.0%

* Local Market Area Code: 222; Type: Census Place Group
 ** Closed Sale counts for most recent 3 months are Preliminary.

Market Analysis By Local Market Area*: Shallowater

Property Type	Closed Sales**	YoY%	Dollar Volume	YoY%	Average Price	YoY%	Median Price	YoY%	Price/Sqft	YoY%	DOM	New Listings	Active Listings	Pending Sales	Months Inventory	Close To OLP
All(New and Existing)																
Residential (SF/COND/TH)	1	-75.0%	\$230,000	-78.2%	\$230,000	-12.8%	\$230,000	4.6%	\$132	5.8%	40	3	5	2	1.9	98.3%
YTD:	2	-75.0%	\$565,000	-64.5%	\$282,500	41.8%	\$282,500	53.7%	\$122	13.1%	114	8	3	4		93.8%
Single Family	1	-75.0%	\$230,000	-78.2%	\$230,000	-12.8%	\$230,000	4.6%	\$132	5.8%	40	3	5	2	1.9	98.3%
YTD:	2	-75.0%	\$565,000	-64.5%	\$282,500	41.8%	\$282,500	53.7%	\$122	13.1%	114	8	3	4		93.8%
Townhouse	-	0.0%	-	0.0%	-	0.0%	-	0.0%	-	0.0%	-	-	-	-	-	0.0%
YTD:	-	0.0%	-	0.0%	-	0.0%	-	0.0%	-	0.0%	-	-	-	-	-	0.0%
Condominium	-	0.0%	-	0.0%	-	0.0%	-	0.0%	-	0.0%	-	-	-	-	-	0.0%
YTD:	-	0.0%	-	0.0%	-	0.0%	-	0.0%	-	0.0%	-	-	-	-	-	0.0%
Existing Home																
Residential (SF/COND/TH)	1	-75.0%	\$230,000	-78.2%	\$230,000	-12.8%	\$230,000	4.6%	\$132	5.8%	40	3	3	2	1.2	98.3%
YTD:	2	-75.0%	\$565,000	-64.5%	\$282,500	41.8%	\$282,500	53.7%	\$122	13.1%	114	6	3	4		93.8%
Single Family	1	-75.0%	\$230,000	-78.2%	\$230,000	-12.8%	\$230,000	4.6%	\$132	5.8%	40	3	3	2	1.2	98.3%
YTD:	2	-75.0%	\$565,000	-64.5%	\$282,500	41.8%	\$282,500	53.7%	\$122	13.1%	114	6	3	4		93.8%
Townhouse	-	0.0%	-	0.0%	-	0.0%	-	0.0%	-	0.0%	-	-	-	-	-	0.0%
YTD:	-	0.0%	-	0.0%	-	0.0%	-	0.0%	-	0.0%	-	-	-	-	-	0.0%
Condominium	-	0.0%	-	0.0%	-	0.0%	-	0.0%	-	0.0%	-	-	-	-	-	0.0%
YTD:	-	0.0%	-	0.0%	-	0.0%	-	0.0%	-	0.0%	-	-	-	-	-	0.0%
New Construction																
Residential (SF/COND/TH)	-	0.0%	-	0.0%	-	0.0%	-	0.0%	-	0.0%	-	-	2	-	12.0	0.0%
YTD:	-	0.0%	-	0.0%	-	0.0%	-	0.0%	-	0.0%	-	2	2	-		0.0%
Single Family	-	0.0%	-	0.0%	-	0.0%	-	0.0%	-	0.0%	-	-	2	-	12.0	0.0%
YTD:	-	0.0%	-	0.0%	-	0.0%	-	0.0%	-	0.0%	-	2	2	-		0.0%
Townhouse	-	0.0%	-	0.0%	-	0.0%	-	0.0%	-	0.0%	-	-	-	-	-	0.0%
YTD:	-	0.0%	-	0.0%	-	0.0%	-	0.0%	-	0.0%	-	-	-	-	-	0.0%
Condominium	-	0.0%	-	0.0%	-	0.0%	-	0.0%	-	0.0%	-	-	-	-	-	0.0%
YTD:	-	0.0%	-	0.0%	-	0.0%	-	0.0%	-	0.0%	-	-	-	-	-	0.0%

* Local Market Area Code: 925; Type: Census Place Group
 ** Closed Sale counts for most recent 3 months are Preliminary.

Market Analysis By Local Market Area*: Slaton

Property Type	Closed Sales**	YoY%	Dollar Volume	YoY%	Average Price	YoY%	Median Price	YoY%	Price/Sqft	YoY%	DOM	New Listings	Active Listings	Pending Sales	Months Inventory	Close To OLP
All(New and Existing)																
Residential (SF/COND/TH)	3	200.0%	\$609,750	735.3%	\$203,250	178.4%	\$219,750	201.0%	\$123	61.4%	20	13	29	5	10.9	96.7%
YTD:	5	25.0%	\$814,250	46.2%	\$162,850	17.0%	\$176,500	152.1%	\$108	82.8%	57	22	28	10		94.6%
Single Family	3	200.0%	\$609,750	735.3%	\$203,250	178.4%	\$219,750	201.0%	\$123	61.4%	20	13	29	5	10.9	96.7%
YTD:	5	25.0%	\$814,250	46.2%	\$162,850	17.0%	\$176,500	152.1%	\$108	82.8%	57	22	28	10		94.6%
Townhouse	-	0.0%	-	0.0%	-	0.0%	-	0.0%	-	0.0%	-	-	-	-	-	0.0%
YTD:	-	0.0%	-	0.0%	-	0.0%	-	0.0%	-	0.0%	-	-	-	-	-	0.0%
Condominium	-	0.0%	-	0.0%	-	0.0%	-	0.0%	-	0.0%	-	-	-	-	-	0.0%
YTD:	-	0.0%	-	0.0%	-	0.0%	-	0.0%	-	0.0%	-	-	-	-	-	0.0%
Existing Home																
Residential (SF/COND/TH)	3	200.0%	\$609,750	735.3%	\$203,250	178.4%	\$219,750	201.0%	\$123	61.4%	20	13	29	5	10.9	96.7%
YTD:	5	25.0%	\$814,250	46.2%	\$162,850	17.0%	\$176,500	152.1%	\$108	82.8%	57	22	28	10		94.6%
Single Family	3	200.0%	\$609,750	735.3%	\$203,250	178.4%	\$219,750	201.0%	\$123	61.4%	20	13	29	5	10.9	96.7%
YTD:	5	25.0%	\$814,250	46.2%	\$162,850	17.0%	\$176,500	152.1%	\$108	82.8%	57	22	28	10		94.6%
Townhouse	-	0.0%	-	0.0%	-	0.0%	-	0.0%	-	0.0%	-	-	-	-	-	0.0%
YTD:	-	0.0%	-	0.0%	-	0.0%	-	0.0%	-	0.0%	-	-	-	-	-	0.0%
Condominium	-	0.0%	-	0.0%	-	0.0%	-	0.0%	-	0.0%	-	-	-	-	-	0.0%
YTD:	-	0.0%	-	0.0%	-	0.0%	-	0.0%	-	0.0%	-	-	-	-	-	0.0%
New Construction																
Residential (SF/COND/TH)	-	0.0%	-	0.0%	-	0.0%	-	0.0%	-	0.0%	-	-	-	-	-	0.0%
YTD:	-	0.0%	-	0.0%	-	0.0%	-	0.0%	-	0.0%	-	-	-	-	-	0.0%
Single Family	-	0.0%	-	0.0%	-	0.0%	-	0.0%	-	0.0%	-	-	-	-	-	0.0%
YTD:	-	0.0%	-	0.0%	-	0.0%	-	0.0%	-	0.0%	-	-	-	-	-	0.0%
Townhouse	-	0.0%	-	0.0%	-	0.0%	-	0.0%	-	0.0%	-	-	-	-	-	0.0%
YTD:	-	0.0%	-	0.0%	-	0.0%	-	0.0%	-	0.0%	-	-	-	-	-	0.0%
Condominium	-	0.0%	-	0.0%	-	0.0%	-	0.0%	-	0.0%	-	-	-	-	-	0.0%
YTD:	-	0.0%	-	0.0%	-	0.0%	-	0.0%	-	0.0%	-	-	-	-	-	0.0%

* Local Market Area Code: 935; Type: Census Place Group
 ** Closed Sale counts for most recent 3 months are Preliminary.

Market Analysis By Local Market Area*: Smyer

Property Type	Closed Sales**	YoY%	Dollar Volume	YoY%	Average Price	YoY%	Median Price	YoY%	Price/Sqft	YoY%	DOM	New Listings	Active Listings	Pending Sales	Months Inventory	Close To OLP
All(New and Existing)																
Residential (SF/COND/TH)	-	0.0%	-	0.0%	-	0.0%	-	0.0%	-	0.0%	-	-	-	-	-	0.0%
YTD:	-	0.0%	-	0.0%	-	0.0%	-	0.0%	-	0.0%	-	1	-	1	-	0.0%
Single Family	-	0.0%	-	0.0%	-	0.0%	-	0.0%	-	0.0%	-	-	-	-	-	0.0%
YTD:	-	0.0%	-	0.0%	-	0.0%	-	0.0%	-	0.0%	-	1	-	1	-	0.0%
Townhouse	-	0.0%	-	0.0%	-	0.0%	-	0.0%	-	0.0%	-	-	-	-	-	0.0%
YTD:	-	0.0%	-	0.0%	-	0.0%	-	0.0%	-	0.0%	-	-	-	-	-	0.0%
Condominium	-	0.0%	-	0.0%	-	0.0%	-	0.0%	-	0.0%	-	-	-	-	-	0.0%
YTD:	-	0.0%	-	0.0%	-	0.0%	-	0.0%	-	0.0%	-	-	-	-	-	0.0%
Existing Home																
Residential (SF/COND/TH)	-	0.0%	-	0.0%	-	0.0%	-	0.0%	-	0.0%	-	-	-	-	-	0.0%
YTD:	-	0.0%	-	0.0%	-	0.0%	-	0.0%	-	0.0%	-	1	-	1	-	0.0%
Single Family	-	0.0%	-	0.0%	-	0.0%	-	0.0%	-	0.0%	-	-	-	-	-	0.0%
YTD:	-	0.0%	-	0.0%	-	0.0%	-	0.0%	-	0.0%	-	1	-	1	-	0.0%
Townhouse	-	0.0%	-	0.0%	-	0.0%	-	0.0%	-	0.0%	-	-	-	-	-	0.0%
YTD:	-	0.0%	-	0.0%	-	0.0%	-	0.0%	-	0.0%	-	-	-	-	-	0.0%
Condominium	-	0.0%	-	0.0%	-	0.0%	-	0.0%	-	0.0%	-	-	-	-	-	0.0%
YTD:	-	0.0%	-	0.0%	-	0.0%	-	0.0%	-	0.0%	-	-	-	-	-	0.0%
New Construction																
Residential (SF/COND/TH)	-	0.0%	-	0.0%	-	0.0%	-	0.0%	-	0.0%	-	-	-	-	-	0.0%
YTD:	-	0.0%	-	0.0%	-	0.0%	-	0.0%	-	0.0%	-	-	-	-	-	0.0%
Single Family	-	0.0%	-	0.0%	-	0.0%	-	0.0%	-	0.0%	-	-	-	-	-	0.0%
YTD:	-	0.0%	-	0.0%	-	0.0%	-	0.0%	-	0.0%	-	-	-	-	-	0.0%
Townhouse	-	0.0%	-	0.0%	-	0.0%	-	0.0%	-	0.0%	-	-	-	-	-	0.0%
YTD:	-	0.0%	-	0.0%	-	0.0%	-	0.0%	-	0.0%	-	-	-	-	-	0.0%
Condominium	-	0.0%	-	0.0%	-	0.0%	-	0.0%	-	0.0%	-	-	-	-	-	0.0%
YTD:	-	0.0%	-	0.0%	-	0.0%	-	0.0%	-	0.0%	-	-	-	-	-	0.0%

* Local Market Area Code: 491; Type: Census Place Group
 ** Closed Sale counts for most recent 3 months are Preliminary.

Market Analysis By Local Market Area*: Sundown

Property Type	Closed Sales**	YoY%	Dollar Volume	YoY%	Average Price	YoY%	Median Price	YoY%	Price/Sqft	YoY%	DOM	New Listings	Active Listings	Pending Sales	Months Inventory	Close To OLP
All(New and Existing)																
Residential (SF/COND/TH)	1	100.0%	\$110,000	100.0%	\$110,000	100.0%	\$110,000	100.0%	\$89	100.0%	15	1	4	1	6.0	100.0%
YTD:	1	100.0%	\$110,000	100.0%	\$110,000	100.0%	\$110,000	100.0%	\$89	100.0%	15	2	4	2		100.0%
Single Family	1	100.0%	\$110,000	100.0%	\$110,000	100.0%	\$110,000	100.0%	\$89	100.0%	15	1	4	1	6.0	100.0%
YTD:	1	100.0%	\$110,000	100.0%	\$110,000	100.0%	\$110,000	100.0%	\$89	100.0%	15	2	4	2		100.0%
Townhouse	-	0.0%	-	0.0%	-	0.0%	-	0.0%	-	0.0%	-	-	-	-	-	0.0%
YTD:	-	0.0%	-	0.0%	-	0.0%	-	0.0%	-	0.0%	-	-	-	-	-	0.0%
Condominium	-	0.0%	-	0.0%	-	0.0%	-	0.0%	-	0.0%	-	-	-	-	-	0.0%
YTD:	-	0.0%	-	0.0%	-	0.0%	-	0.0%	-	0.0%	-	-	-	-	-	0.0%
Existing Home																
Residential (SF/COND/TH)	1	100.0%	\$110,000	100.0%	\$110,000	100.0%	\$110,000	100.0%	\$89	100.0%	15	1	4	1	6.0	100.0%
YTD:	1	100.0%	\$110,000	100.0%	\$110,000	100.0%	\$110,000	100.0%	\$89	100.0%	15	2	4	2		100.0%
Single Family	1	100.0%	\$110,000	100.0%	\$110,000	100.0%	\$110,000	100.0%	\$89	100.0%	15	1	4	1	6.0	100.0%
YTD:	1	100.0%	\$110,000	100.0%	\$110,000	100.0%	\$110,000	100.0%	\$89	100.0%	15	2	4	2		100.0%
Townhouse	-	0.0%	-	0.0%	-	0.0%	-	0.0%	-	0.0%	-	-	-	-	-	0.0%
YTD:	-	0.0%	-	0.0%	-	0.0%	-	0.0%	-	0.0%	-	-	-	-	-	0.0%
Condominium	-	0.0%	-	0.0%	-	0.0%	-	0.0%	-	0.0%	-	-	-	-	-	0.0%
YTD:	-	0.0%	-	0.0%	-	0.0%	-	0.0%	-	0.0%	-	-	-	-	-	0.0%
New Construction																
Residential (SF/COND/TH)	-	0.0%	-	0.0%	-	0.0%	-	0.0%	-	0.0%	-	-	-	-	-	0.0%
YTD:	-	0.0%	-	0.0%	-	0.0%	-	0.0%	-	0.0%	-	-	-	-	-	0.0%
Single Family	-	0.0%	-	0.0%	-	0.0%	-	0.0%	-	0.0%	-	-	-	-	-	0.0%
YTD:	-	0.0%	-	0.0%	-	0.0%	-	0.0%	-	0.0%	-	-	-	-	-	0.0%
Townhouse	-	0.0%	-	0.0%	-	0.0%	-	0.0%	-	0.0%	-	-	-	-	-	0.0%
YTD:	-	0.0%	-	0.0%	-	0.0%	-	0.0%	-	0.0%	-	-	-	-	-	0.0%
Condominium	-	0.0%	-	0.0%	-	0.0%	-	0.0%	-	0.0%	-	-	-	-	-	0.0%
YTD:	-	0.0%	-	0.0%	-	0.0%	-	0.0%	-	0.0%	-	-	-	-	-	0.0%

* Local Market Area Code: 223; Type: Census Place Group
 ** Closed Sale counts for most recent 3 months are Preliminary.

Market Analysis By Local Market Area*: Wolfforth

Property Type	Closed Sales**	YoY%	Dollar Volume	YoY%	Average Price	YoY%	Median Price	YoY%	Price/Sqft	YoY%	DOM	New Listings	Active Listings	Pending Sales	Months Inventory	Close To OLP
All(New and Existing)																
Residential (SF/COND/TH)	9	-25.0%	\$2,444,000	-43.1%	\$271,556	-24.1%	\$190,000	-50.9%	\$121	-24.9%	92	20	51	11	4.0	92.2%
YTD:	20	25.0%	\$6,071,350	14.6%	\$303,568	-8.3%	\$242,930	-30.5%	\$148	-5.5%	67	40	49	23		95.4%
Single Family	9	-25.0%	\$2,444,000	-43.1%	\$271,556	-24.1%	\$190,000	-50.9%	\$121	-24.9%	92	20	51	11	4.2	92.2%
YTD:	17	13.3%	\$5,486,350	7.1%	\$322,726	-5.5%	\$284,500	-25.9%	\$146	-7.4%	62	40	49	21		95.0%
Townhouse	-	0.0%	-	0.0%	-	0.0%	-	0.0%	-	0.0%	-	-	-	-	-	0.0%
YTD:	3	200.0%	\$585,000	238.2%	\$195,000	12.7%	\$195,000	12.7%	\$160	12.7%	100	-	-	2		97.7%
Condominium	-	0.0%	-	0.0%	-	0.0%	-	0.0%	-	0.0%	-	-	-	-	-	0.0%
YTD:	-	0.0%	-	0.0%	-	0.0%	-	0.0%	-	0.0%	-	-	-	-	-	0.0%
Existing Home																
Residential (SF/COND/TH)	9	12.5%	\$2,444,000	-10.7%	\$271,556	-20.6%	\$190,000	-50.9%	\$121	-22.9%	92	13	34	6	3.3	92.2%
YTD:	13	18.2%	\$3,915,500	11.4%	\$301,192	-5.7%	\$284,500	-25.9%	\$136	-11.4%	74	28	33	15		93.3%
Single Family	9	12.5%	\$2,444,000	-10.7%	\$271,556	-20.6%	\$190,000	-50.9%	\$121	-22.9%	92	13	34	6	3.4	92.2%
YTD:	13	30.0%	\$3,915,500	17.2%	\$301,192	-9.9%	\$284,500	-26.5%	\$136	-12.0%	74	28	33	15		93.3%
Townhouse	-	0.0%	-	0.0%	-	0.0%	-	0.0%	-	0.0%	-	-	-	-	-	0.0%
YTD:	-	-100.0%	-	-100.0%	-	-100.0%	-	-100.0%	-	-100.0%	-	-	-	-	-	0.0%
Condominium	-	0.0%	-	0.0%	-	0.0%	-	0.0%	-	0.0%	-	-	-	-	-	0.0%
YTD:	-	0.0%	-	0.0%	-	0.0%	-	0.0%	-	0.0%	-	-	-	-	-	0.0%
New Construction																
Residential (SF/COND/TH)	-	-100.0%	-	-100.0%	-	-100.0%	-	-100.0%	-	-100.0%	-	7	17	5	6.6	0.0%
YTD:	7	40.0%	\$2,155,850	21.0%	\$307,979	-13.6%	\$239,000	-16.7%	\$171	4.0%	54	12	16	8		99.4%
Single Family	-	-100.0%	-	-100.0%	-	-100.0%	-	-100.0%	-	-100.0%	-	7	17	5	8.2	0.0%
YTD:	4	-20.0%	\$1,570,850	-11.9%	\$392,713	10.2%	\$283,425	-1.2%	\$179	8.9%	20	12	16	6		100.7%
Townhouse	-	0.0%	-	0.0%	-	0.0%	-	0.0%	-	0.0%	-	-	-	-	-	0.0%
YTD:	3	100.0%	\$585,000	100.0%	\$195,000	100.0%	\$195,000	100.0%	\$160	100.0%	100	-	-	2		97.7%
Condominium	-	0.0%	-	0.0%	-	0.0%	-	0.0%	-	0.0%	-	-	-	-	-	0.0%
YTD:	-	0.0%	-	0.0%	-	0.0%	-	0.0%	-	0.0%	-	-	-	-	-	0.0%

* Local Market Area Code: 1096; Type: Census Place Group
 ** Closed Sale counts for most recent 3 months are Preliminary.

