

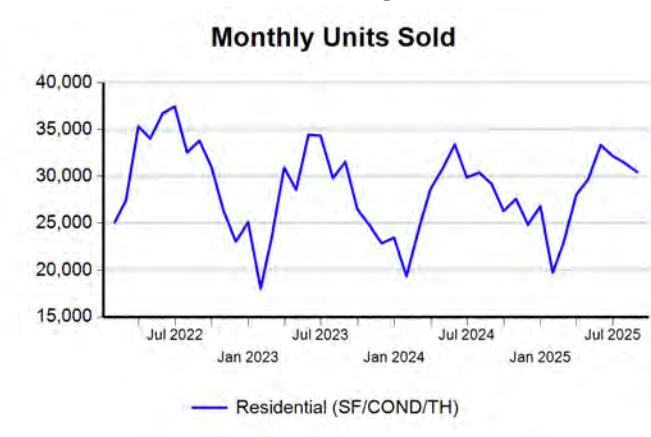
Market Analysis By State: Texas

Property Type	Closed Sales*	YoY%	Dollar Volume	YoY%	Average Price	YoY%	Median Price	YoY%	Price/ Sqft	YoY%	DOM	New Listings	Active Listings	Pending Sales	Months Inventory	Close To OLP
<u>All(New and Existing)</u>																
Residential (SF/COND/TH)	30,431	4.3%	\$12,930,238,911	5.1%	\$424,904	0.8%	\$335,245	-1.1%	\$189	-1.3%	63	49,498	156,749	29,038	5.6	93.4%
YTD:	227,829	1.0%	\$97,180,471,364	2.0%	\$426,550	1.0%	\$337,000	-0.9%	\$191	-0.9%	65	432,284	141,710	236,935		94.3%
Single Family	28,921	5.0%	\$12,409,864,578	5.7%	\$429,095	0.7%	\$339,900	0.0%	\$187	-1.1%	62	46,080	143,876	27,520	5.5	93.5%
YTD:	216,019	1.5%	\$92,945,590,270	2.4%	\$430,266	0.9%	\$339,990	0.0%	\$189	-0.7%	65	401,914	129,719	224,926		94.3%
Townhouse	636	-12.3%	\$231,775,271	-10.1%	\$364,427	2.5%	\$318,000	-2.2%	\$200	-0.8%	65	1,471	4,585	637	6.9	93.9%
YTD:	5,398	-7.6%	\$1,970,144,492	-5.9%	\$364,977	1.8%	\$324,995	-0.6%	\$196	-0.4%	63	12,583	4,150	5,474		94.6%
Condominium	850	-5.1%	\$281,167,112	-9.4%	\$330,785	-4.5%	\$235,000	-6.0%	\$251	-3.5%	87	1,947	8,288	881	10.6	91.3%
YTD:	6,371	-7.9%	\$2,250,748,843	-6.9%	\$353,280	1.1%	\$249,000	-3.5%	\$259	-2.9%	79	17,787	7,841	6,535		92.3%
<u>Existing Home</u>																
Residential (SF/COND/TH)	22,760	5.4%	\$9,794,367,122	7.4%	\$430,332	1.9%	\$335,000	1.2%	\$191	-0.6%	59	37,784	120,667	20,920	6.0	93.7%
YTD:	167,722	0.6%	\$72,494,727,819	2.6%	\$432,231	2.0%	\$334,000	1.2%	\$193	-0.3%	60	336,589	108,472	172,882		94.4%
Single Family	21,425	6.0%	\$9,348,066,636	8.0%	\$436,316	1.8%	\$340,000	1.2%	\$189	-0.5%	58	34,759	109,382	19,573	5.8	93.7%
YTD:	157,340	1.0%	\$68,891,745,769	2.9%	\$437,853	1.9%	\$337,425	0.7%	\$191	0.0%	59	309,674	98,031	162,305		94.4%
Townhouse	506	-9.0%	\$179,429,033	-5.7%	\$354,603	3.7%	\$300,000	-3.2%	\$195	-0.6%	61	1,182	3,574	506	6.9	93.9%
YTD:	4,278	-3.2%	\$1,511,510,413	-1.4%	\$353,322	1.8%	\$305,000	0.0%	\$191	-0.3%	58	10,111	3,198	4,370		94.5%
Condominium	806	-3.1%	\$259,889,505	-3.2%	\$322,444	-0.1%	\$221,500	-7.3%	\$249	-2.2%	87	1,843	7,711	841	10.5	91.2%
YTD:	6,067	-7.1%	\$2,079,731,092	-5.0%	\$342,794	2.3%	\$240,000	-3.8%	\$255	-2.5%	78	16,804	7,242	6,207		92.3%
<u>New Construction</u>																
Residential (SF/COND/TH)	7,664	1.1%	\$3,132,291,738	-1.8%	\$408,702	-2.8%	\$339,000	-3.1%	\$184	-3.4%	76	11,714	36,082	8,118	4.7	92.8%
YTD:	60,088	2.1%	\$24,677,808,767	0.1%	\$410,694	-1.9%	\$344,000	-2.2%	\$186	-2.7%	80	95,695	33,238	64,053		94.0%
Single Family	7,493	2.0%	\$3,059,701,310	-0.6%	\$408,341	-2.5%	\$337,935	-3.4%	\$183	-3.1%	75	11,321	34,494	7,947	4.6	92.8%
YTD:	58,670	2.8%	\$24,050,139,012	0.8%	\$409,922	-2.0%	\$342,900	-2.0%	\$184	-2.5%	80	92,240	31,687	62,621		94.0%
Townhouse	125	-26.0%	\$50,475,066	-25.4%	\$403,801	0.8%	\$359,990	-2.0%	\$216	0.2%	81	289	1,011	131	7.0	93.8%
YTD:	1,114	-21.7%	\$456,460,136	-18.6%	\$409,749	3.9%	\$370,270	0.4%	\$217	1.2%	80	2,472	952	1,104		94.8%
Condominium	44	-31.3%	\$21,220,576	-49.2%	\$482,286	-26.1%	\$420,000	-6.7%	\$303	-10.7%	82	104	577	40	13.3	93.5%
YTD:	303	-21.7%	\$170,527,940	-25.2%	\$562,798	-4.4%	\$411,195	-13.9%	\$322	-5.1%	102	983	598	328		93.7%

\* Closed Sale counts for most recent 3 months are Preliminary.

Trend Analysis By State: Texas

Residential, All (New and Existing)



Single Family, New vs. Existing



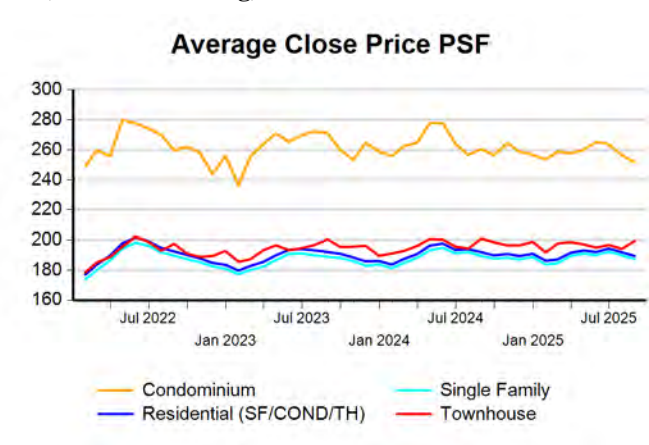
COND/TH, All (New and Existing)



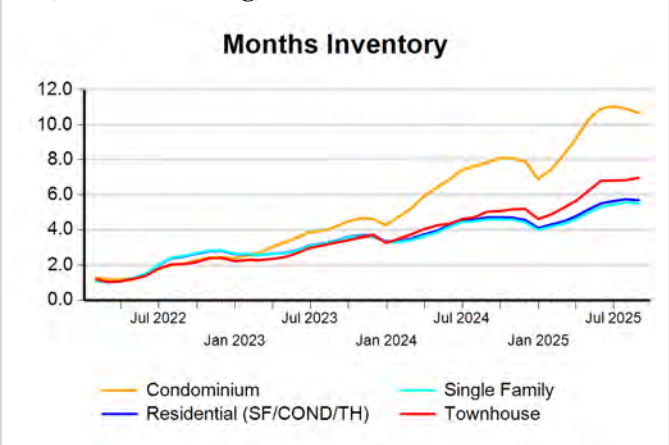
All (New and Existing) Construction



All (New and Existing) Construction



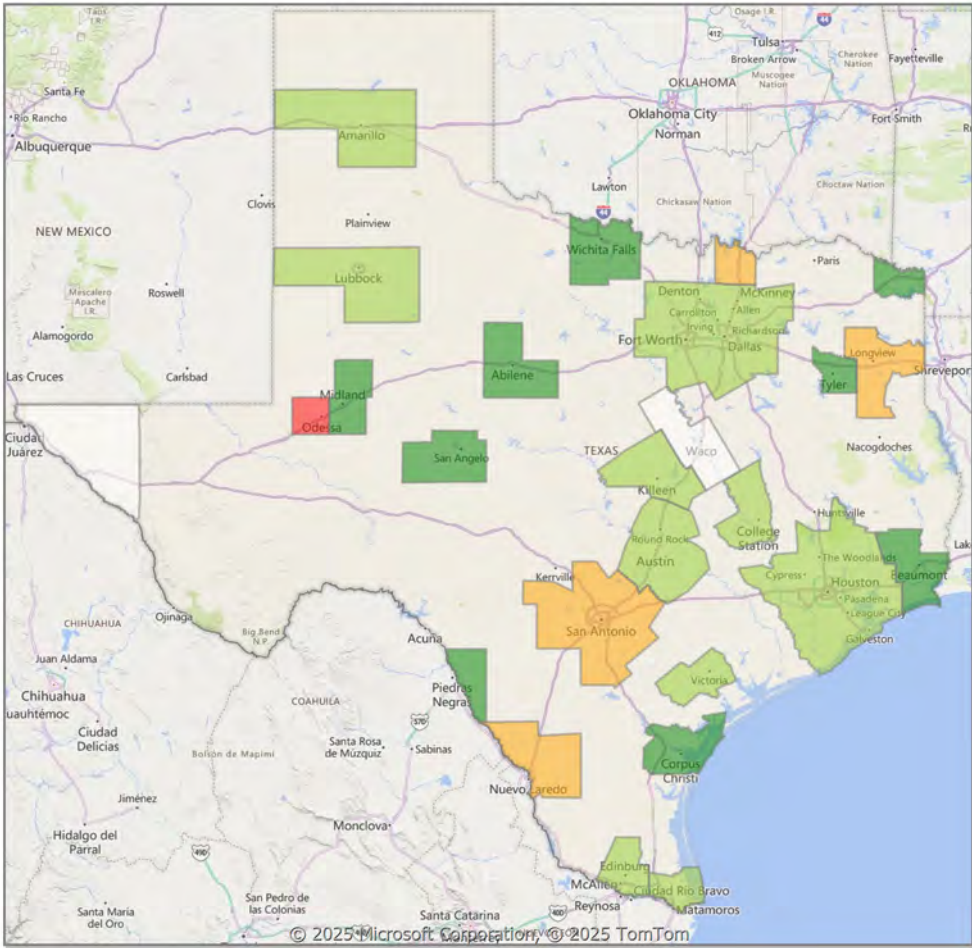
All (New and Existing) Construction



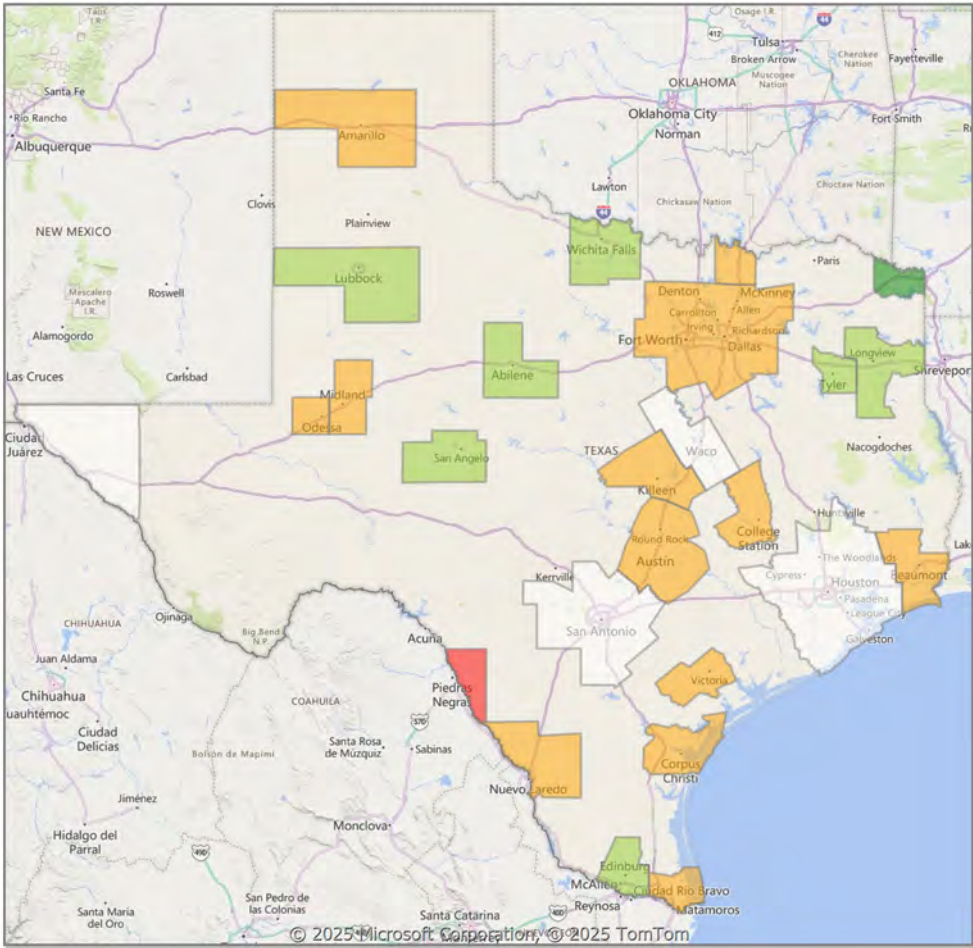
\* Closed Sale counts for most recent 3 months are Preliminary.

Comparison By Metropolitan Statistical Area in Texas

Residential\* Closed Sales  
YoY Percentage Change



Residential\* Avg Close Price Per SqFt  
YoY Percentage Change



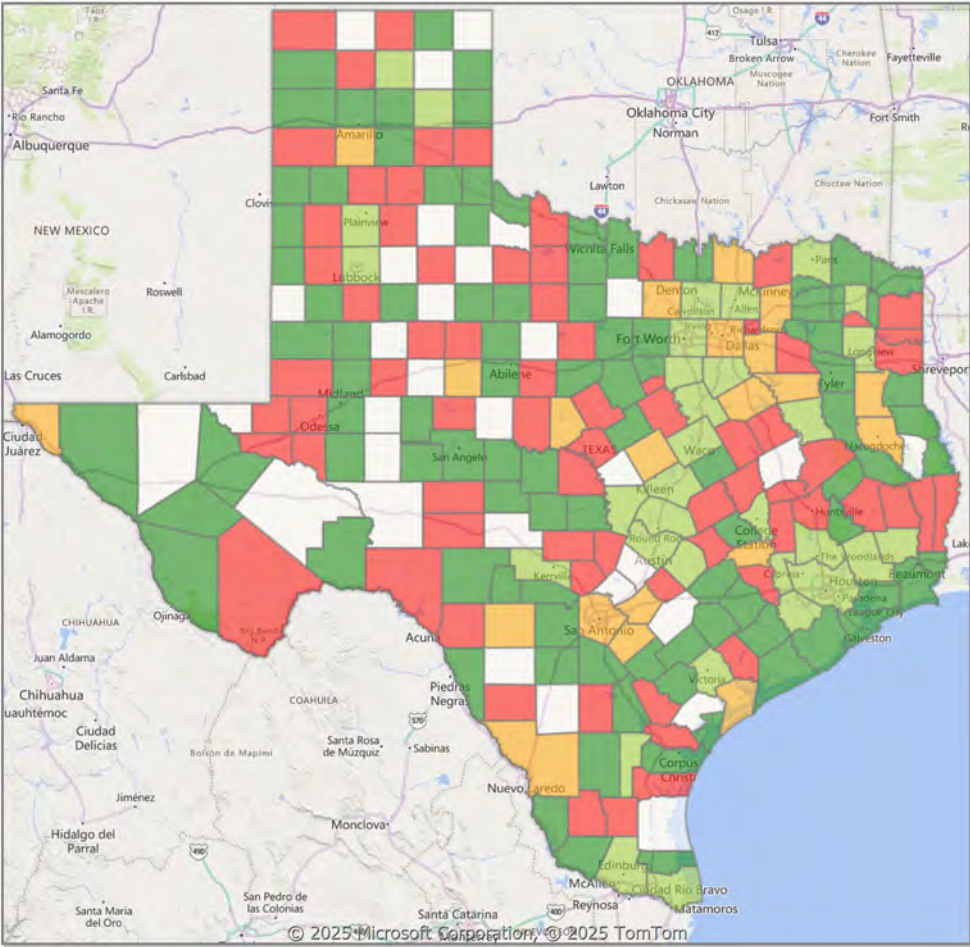
\* Residential includes Single Family, Condominium and Townhouse.



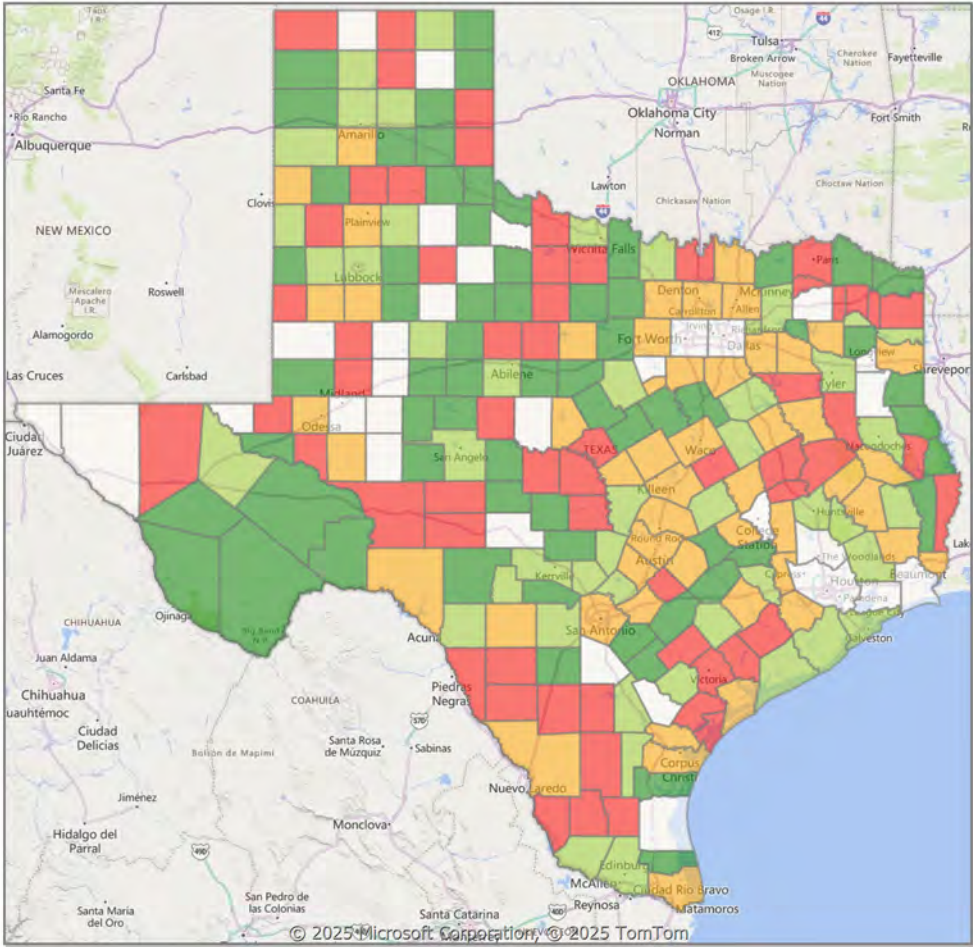


Comparison By County in Texas

Residential\* Closed Sales  
YoY Percentage Change



Residential\* Avg Close Price Per SqFt  
YoY Percentage Change



\* Residential includes Single Family, Condominium and Townhouse.



Market Analysis By Metropolitan Statistical Area: Lubbock

Property Type	Closed Sales*	YoY%	Dollar Volume	YoY%	Average Price	YoY%	Median Price	YoY%	Price/ Sqft	YoY%	DOM	New Listings	Active Listings	Pending Sales	Months Inventory	Close To OLP
<u>All(New and Existing)</u>																
Residential (SF/COND/TH)	486	3.9%	\$143,888,189	8.2%	\$296,066	4.2%	\$245,000	2.1%	\$142	1.8%	43	764	1,880	422	4.4	95.7%
YTD:	3,607	0.7%	\$1,040,217,261	3.2%	\$288,388	2.5%	\$240,000	2.6%	\$139	2.2%	50	6,770	1,645	3,801		95.6%
Single Family	476	4.4%	\$142,102,037	8.7%	\$298,534	4.2%	\$246,000	1.9%	\$142	1.6%	43	747	1,809	418	4.4	95.8%
YTD:	3,538	1.9%	\$1,026,579,792	4.5%	\$290,158	2.6%	\$242,750	3.1%	\$140	2.2%	50	6,616	1,587	3,734		95.6%
Townhouse	5	-58.3%	\$919,500	-60.2%	\$183,900	-4.5%	\$206,000	16.1%	\$136	14.2%	61	15	62	3	10.3	95.8%
YTD:	51	-43.3%	\$10,479,325	-40.4%	\$205,477	5.3%	\$190,000	0.0%	\$132	1.6%	72	125	49	51		95.2%
Condominium	4	100.0%	\$615,000	100.0%	\$153,750	100.0%	\$127,500	100.0%	\$123	100.0%	42	2	9	1	4.7	90.2%
YTD:	17	-10.5%	\$2,914,000	-65.5%	\$171,412	-61.5%	\$130,000	-39.3%	\$135	-1.6%	51	29	8	16		93.1%

\* Closed Sale counts for most recent 3 months are Preliminary.

<u>Existing Home</u>																
Residential (SF/COND/TH)	391	10.8%	\$111,246,582	14.1%	\$284,518	3.0%	\$225,500	0.2%	\$135	2.6%	43	616	1,555	335	4.8	95.2%
YTD:	2,790	2.1%	\$777,063,930	3.7%	\$278,518	1.6%	\$230,000	2.7%	\$132	1.9%	51	5,555	1,375	2,957		95.2%
Single Family	383	11.3%	\$109,980,646	14.9%	\$287,156	3.2%	\$228,500	-1.0%	\$136	2.4%	43	599	1,492	331	4.7	95.3%
YTD:	2,729	2.1%	\$764,978,730	4.3%	\$280,315	2.2%	\$231,500	2.9%	\$132	1.8%	50	5,412	1,326	2,898		95.2%
Townhouse	4	-55.6%	\$690,500	-60.5%	\$172,625	-11.0%	\$153,000	-12.6%	\$129	11.4%	52	15	54	3	11.2	94.3%
YTD:	43	4.9%	\$8,928,625	13.7%	\$207,642	8.4%	\$191,500	9.4%	\$130	10.3%	73	114	40	43		94.3%
Condominium	4	100.0%	\$615,000	100.0%	\$153,750	100.0%	\$127,500	100.0%	\$123	100.0%	42	2	9	1	4.7	90.2%
YTD:	17	-10.5%	\$2,914,000	-65.5%	\$171,412	-61.5%	\$130,000	-39.3%	\$135	-1.6%	51	29	8	16		93.1%

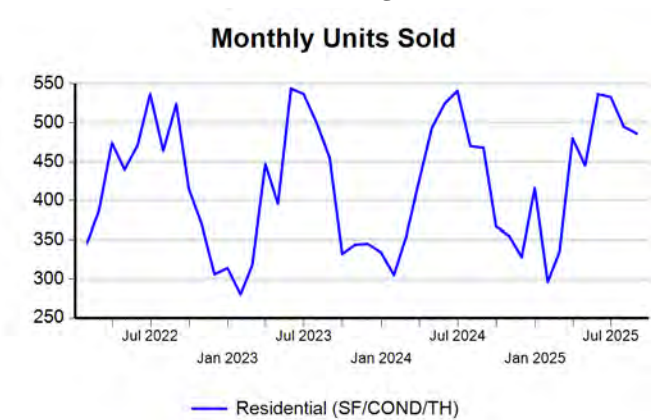
\* Closed Sale counts for most recent 3 months are Preliminary.

<u>New Construction</u>																
Residential (SF/COND/TH)	95	-17.4%	\$32,659,246	-8.1%	\$343,782	11.3%	\$283,000	11.0%	\$171	4.2%	42	148	325	87	3.3	97.9%
YTD:	818	-3.7%	\$263,436,396	1.9%	\$322,049	5.8%	\$260,963	3.2%	\$165	3.8%	47	1,215	269	844		97.1%
Single Family	94	-16.1%	\$32,435,348	-7.3%	\$345,057	10.5%	\$283,059	9.5%	\$171	3.7%	41	148	317	87	3.2	97.9%
YTD:	810	1.3%	\$261,893,350	5.3%	\$323,325	4.0%	\$262,475	1.2%	\$165	3.2%	47	1,204	260	836		97.1%
Townhouse	1	-66.7%	\$229,000	-59.4%	\$229,000	21.8%	\$229,000	19.3%	\$167	27.4%	99	-	8	0	6.9	101.8%
YTD:	8	-83.7%	\$1,550,700	-84.0%	\$193,838	-2.2%	\$186,500	-4.4%	\$144	2.5%	68	11	8	8		100.6%
Condominium	-	0.0%	-	0.0%	-	0.0%	-	0.0%	-	0.0%	-	-	0	0	-	0.0%
YTD:	-	0.0%	-	0.0%	-	0.0%	-	0.0%	-	0.0%	-	0	0	0		0.0%

\* Closed Sale counts for most recent 3 months are Preliminary.

Trend Analysis By Metropolitan Statistical Area: Lubbock

Residential, All (New and Existing)



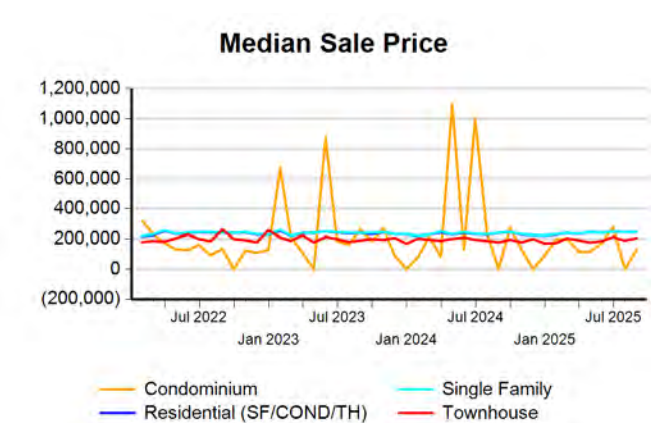
Single Family, New vs. Existing



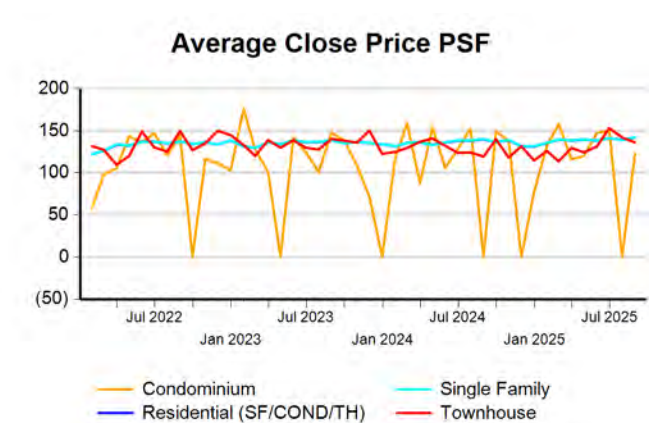
COND/TH, All (New and Existing)



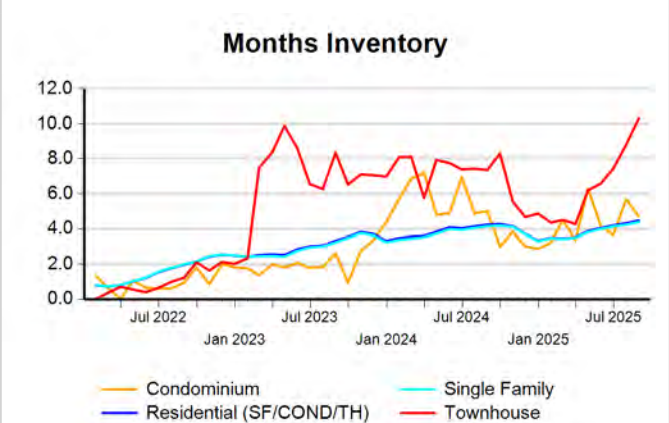
All (New and Existing) Construction



All (New and Existing) Construction

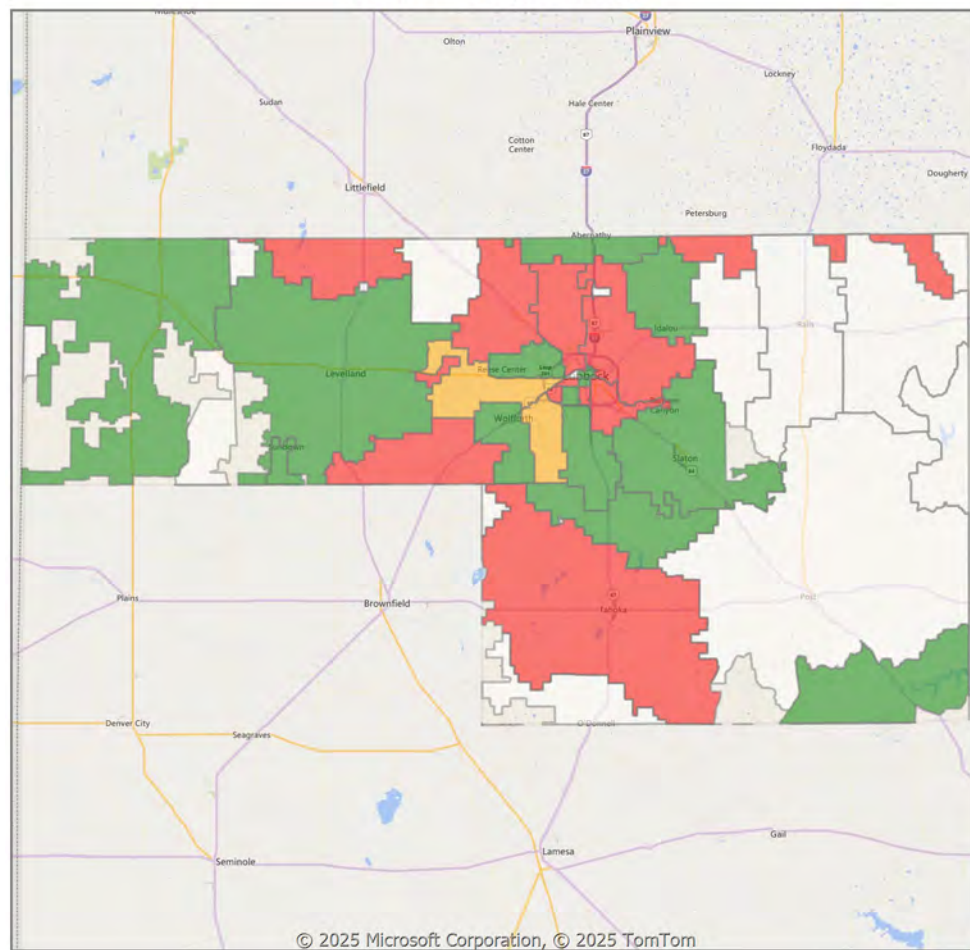


All (New and Existing) Construction

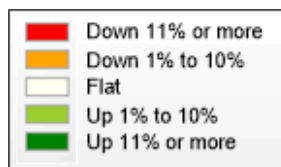


\* Closed Sale counts for most recent 3 months are Preliminary.



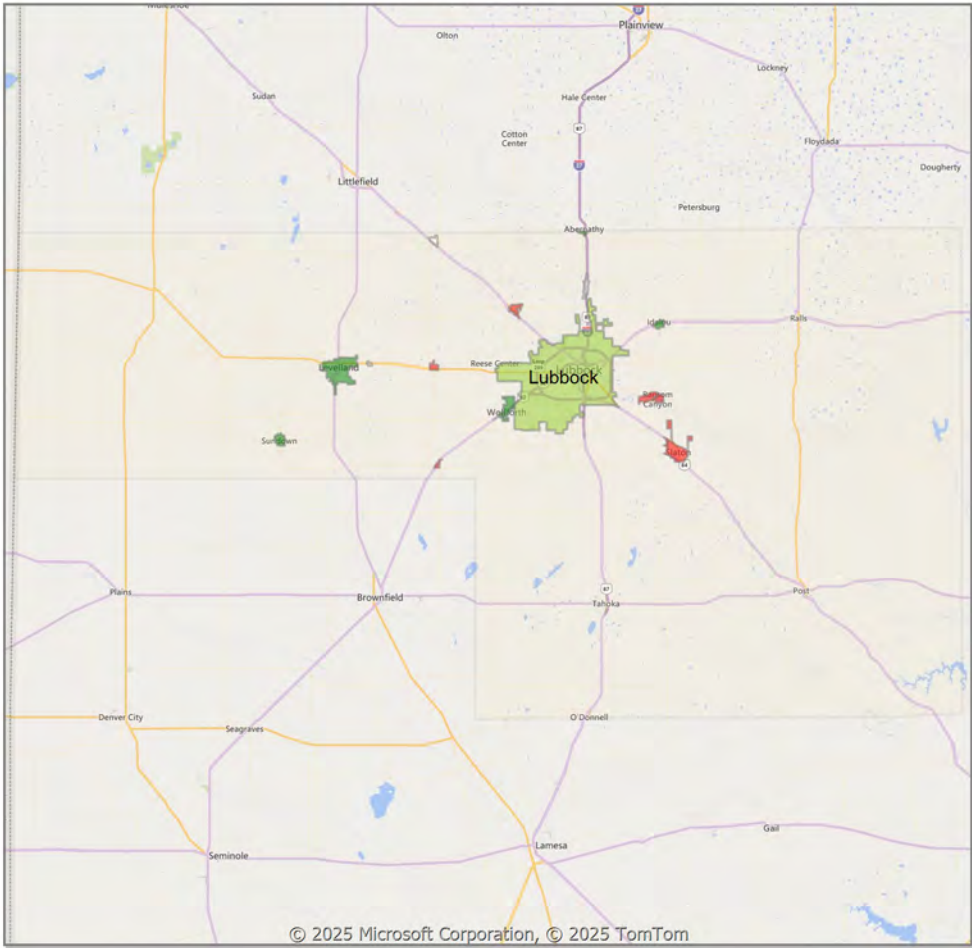
**Residential\*\* Closed Sales  
YoY Percentage Change**

\*\* Residential includes Single Family, Condominium and Townhouse.

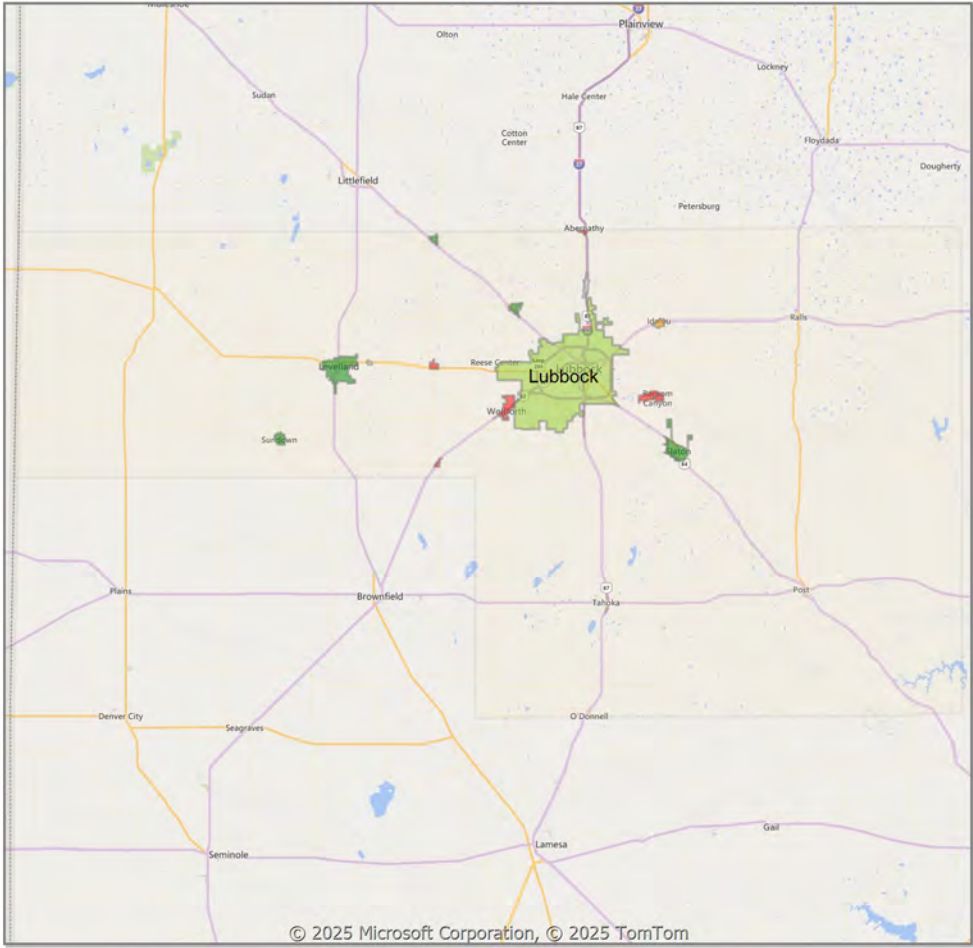


Comparison By Local Market Area\* in Lubbock MSA

Residential\*\* Closed Sales  
YoY Percentage Change



Residential\*\* Avg Close Price Per SqFt  
YoY Percentage Change



\* Census Place Group  
\*\* Residential includes Single Family, Condominium and Townhouse.





Market Analysis By County: Hockley County

Property Type	Closed Sales*	YoY%	Dollar Volume	YoY%	Average Price	YoY%	Median Price	YoY%	Price/ Sqft	YoY%	DOM	New Listings	Active Listings	Pending Sales	Months Inventory	Close To OLP
<u>All(New and Existing)</u>																
Residential (SF/COND/TH)	21	-27.6%	\$5,580,550	-19.6%	\$265,740	11.0%	\$215,000	-4.4%	\$136	2.4%	45	40	95	22	4.9	99.9%
YTD:	139	-30.9%	\$34,609,313	-22.0%	\$248,988	12.8%	\$215,000	3.4%	\$122	2.9%	78	262	71	149		94.9%
Single Family	21	-27.6%	\$5,580,550	-19.6%	\$265,740	11.0%	\$215,000	-4.4%	\$136	2.4%	45	40	95	22	4.9	99.9%
YTD:	139	-30.5%	\$34,609,313	-21.8%	\$248,988	12.6%	\$215,000	3.4%	\$122	2.5%	78	262	71	149		94.9%
Townhouse	-	0.0%	-	0.0%	-	0.0%	-	0.0%	-	0.0%	-	-	-	-	-	0.0%
YTD:	-	0.0%	-	0.0%	-	0.0%	-	0.0%	-	0.0%	-	-	-	-	-	0.0%
Condominium	-	0.0%	-	0.0%	-	0.0%	-	0.0%	-	0.0%	-	-	-	-	-	0.0%
YTD:	-	-100.0%	-	-100.0%	-	-100.0%	-	-100.0%	-	-100.0%	-	-	-	-	-	0.0%
<u>Existing Home</u>																
Residential (SF/COND/TH)	18	20.0%	\$4,476,650	32.1%	\$248,703	10.1%	\$198,000	-5.7%	\$131	13.9%	49	28	73	16	5.2	97.6%
YTD:	115	-13.5%	\$26,788,650	-2.0%	\$232,945	13.4%	\$203,500	7.1%	\$113	10.7%	78	209	59	122		94.4%
Single Family	18	20.0%	\$4,476,650	32.1%	\$248,703	10.1%	\$198,000	-5.7%	\$131	13.9%	49	28	73	16	5.2	97.6%
YTD:	115	-12.9%	\$26,788,650	-1.5%	\$232,945	13.1%	\$203,500	7.1%	\$113	9.9%	78	209	59	122		94.4%
Townhouse	-	0.0%	-	0.0%	-	0.0%	-	0.0%	-	0.0%	-	-	-	-	-	0.0%
YTD:	-	0.0%	-	0.0%	-	0.0%	-	0.0%	-	0.0%	-	-	-	-	-	0.0%
Condominium	-	0.0%	-	0.0%	-	0.0%	-	0.0%	-	0.0%	-	-	-	-	-	0.0%
YTD:	-	-100.0%	-	-100.0%	-	-100.0%	-	-100.0%	-	-100.0%	-	-	-	-	-	0.0%
<u>New Construction</u>																
Residential (SF/COND/TH)	3	-78.6%	\$1,103,900	-68.9%	\$367,967	45.0%	\$307,000	29.9%	\$167	9.6%	26	12	22	6	4.1	113.7%
YTD:	24	-64.7%	\$7,820,663	-54.1%	\$325,861	29.9%	\$241,000	5.1%	\$167	9.9%	78	53	11	27		97.2%
Single Family	3	-78.6%	\$1,103,900	-68.9%	\$367,967	45.0%	\$307,000	29.9%	\$167	9.6%	26	12	22	6	4.1	113.7%
YTD:	24	-64.7%	\$7,820,663	-54.1%	\$325,861	29.9%	\$241,000	5.1%	\$167	9.9%	78	53	11	27		97.2%
Townhouse	-	0.0%	-	0.0%	-	0.0%	-	0.0%	-	0.0%	-	-	-	-	-	0.0%
YTD:	-	0.0%	-	0.0%	-	0.0%	-	0.0%	-	0.0%	-	-	-	-	-	0.0%
Condominium	-	0.0%	-	0.0%	-	0.0%	-	0.0%	-	0.0%	-	-	-	-	-	0.0%
YTD:	-	0.0%	-	0.0%	-	0.0%	-	0.0%	-	0.0%	-	-	-	-	-	0.0%

\* Closed Sale counts for most recent 3 months are Preliminary.

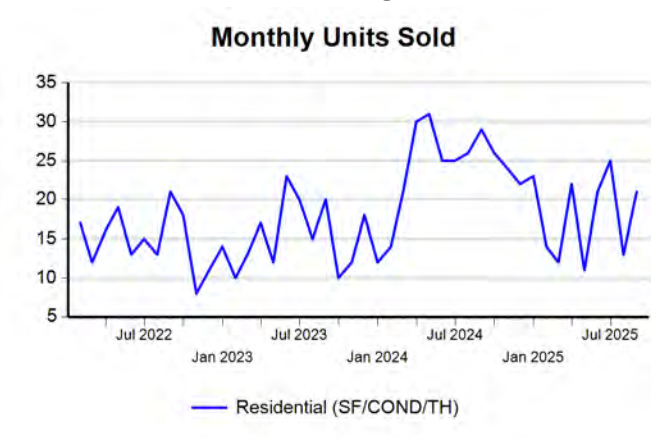
Market Analysis By County: Lubbock County

Property Type	Closed Sales*	YoY%	Dollar Volume	YoY%	Average Price	YoY%	Median Price	YoY%	Price/ Sqft	YoY%	DOM	New Listings	Active Listings	Pending Sales	Months Inventory	Close To OLP
<u>All(New and Existing)</u>																
Residential (SF/COND/TH)	451	6.1%	\$134,330,748	9.7%	\$297,851	3.3%	\$245,000	0.8%	\$143	1.8%	43	693	1,703	389	4.3	95.6%
YTD:	3,380	3.6%	\$985,310,051	5.7%	\$291,512	2.1%	\$243,864	3.3%	\$141	2.0%	48	6,304	1,508	3,556		95.8%
Single Family	441	6.8%	\$132,547,170	10.3%	\$300,560	3.3%	\$246,000	0.4%	\$143	1.5%	42	676	1,634	385	4.2	95.6%
YTD:	3,311	4.9%	\$971,674,130	7.2%	\$293,468	2.2%	\$245,000	2.5%	\$141	2.0%	48	6,152	1,452	3,489		95.8%
Townhouse	5	-58.3%	\$919,500	-60.2%	\$183,900	-4.5%	\$206,000	16.1%	\$136	14.2%	61	15	62	3	10.3	95.8%
YTD:	51	-43.3%	\$10,479,325	-40.4%	\$205,477	5.3%	\$190,000	0.0%	\$132	1.6%	72	125	49	51		95.2%
Condominium	4	100.0%	\$615,000	100.0%	\$153,750	100.0%	\$127,500	100.0%	\$123	100.0%	42	2	7	1	3.7	90.2%
YTD:	17	-5.6%	\$2,914,000	-64.9%	\$171,412	-62.9%	\$130,000	-41.4%	\$135	-6.5%	51	27	7	16		93.1%
<u>Existing Home</u>																
Residential (SF/COND/TH)	360	10.8%	\$103,125,768	13.5%	\$286,460	2.4%	\$228,000	-3.0%	\$136	2.2%	43	562	1,409	308	4.7	95.1%
YTD:	2,591	3.9%	\$731,556,053	5.1%	\$282,345	1.2%	\$233,000	2.0%	\$134	1.4%	49	5,158	1,256	2,744		95.4%
Single Family	352	11.4%	\$101,864,163	14.3%	\$289,387	2.6%	\$230,000	-2.8%	\$136	2.0%	43	545	1,348	304	4.6	95.2%
YTD:	2,530	3.9%	\$719,471,705	5.8%	\$284,376	1.9%	\$235,000	2.2%	\$134	1.3%	48	5,017	1,208	2,685		95.4%
Townhouse	4	-55.6%	\$690,500	-60.5%	\$172,625	-11.0%	\$153,000	-12.6%	\$129	11.4%	52	15	54	3	11.2	94.3%
YTD:	43	4.9%	\$8,928,625	13.7%	\$207,642	8.4%	\$191,500	9.4%	\$130	10.3%	73	114	40	43		94.3%
Condominium	4	100.0%	\$615,000	100.0%	\$153,750	100.0%	\$127,500	100.0%	\$123	100.0%	42	2	7	1	3.7	90.2%
YTD:	17	-5.6%	\$2,914,000	-64.9%	\$171,412	-62.9%	\$130,000	-41.4%	\$135	-6.5%	51	27	7	16		93.1%
<u>New Construction</u>																
Residential (SF/COND/TH)	91	-9.0%	\$31,214,799	-1.3%	\$343,020	8.5%	\$282,875	8.9%	\$171	3.5%	42	131	294	81	3.1	97.4%
YTD:	790	2.7%	\$254,033,303	7.6%	\$321,561	4.8%	\$260,963	3.0%	\$165	3.6%	46	1,146	252	812		97.1%
Single Family	90	-7.2%	\$30,991,103	-0.2%	\$344,346	7.5%	\$282,938	8.8%	\$171	2.8%	42	131	286	81	3.1	97.3%
YTD:	782	8.6%	\$252,490,503	11.6%	\$322,878	2.7%	\$262,475	0.8%	\$165	2.9%	45	1,135	243	804		97.1%
Townhouse	1	-66.7%	\$229,000	-59.4%	\$229,000	21.8%	\$229,000	19.3%	\$167	27.4%	99	-	8	-	6.9	101.8%
YTD:	8	-83.7%	\$1,550,700	-84.0%	\$193,838	-2.2%	\$186,500	-4.4%	\$144	2.5%	68	11	8	8		100.6%
Condominium	-	0.0%	-	0.0%	-	0.0%	-	0.0%	-	0.0%	-	-	-	-	-	0.0%
YTD:	-	0.0%	-	0.0%	-	0.0%	-	0.0%	-	0.0%	-	-	-	-	-	0.0%

\* Closed Sale counts for most recent 3 months are Preliminary.

Trend Analysis By County: Hockley County

Residential, All (New and Existing)



Single Family, New vs. Existing



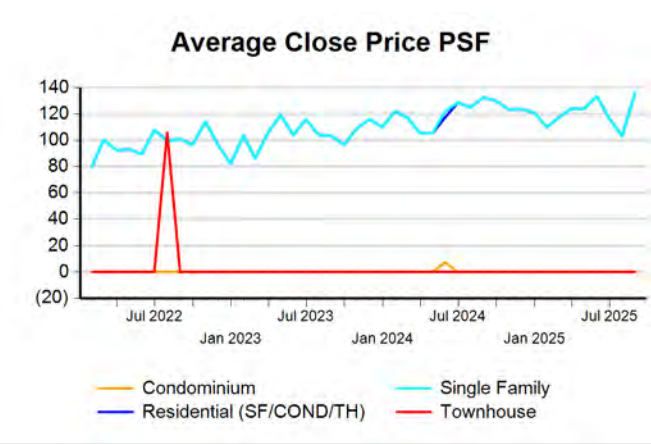
COND/TH, All (New and Existing)



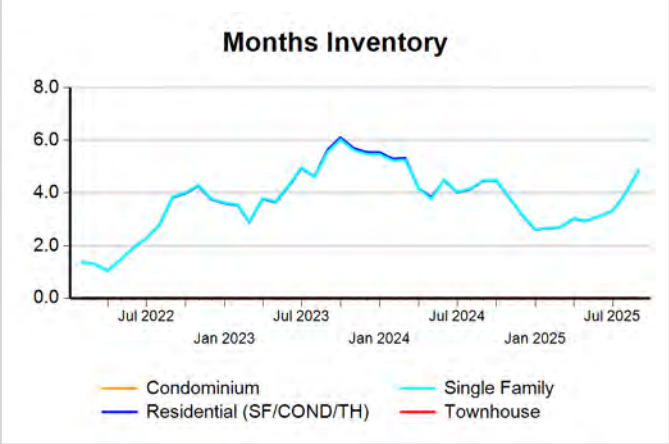
All (New and Existing) Construction



All (New and Existing) Construction



All (New and Existing) Construction

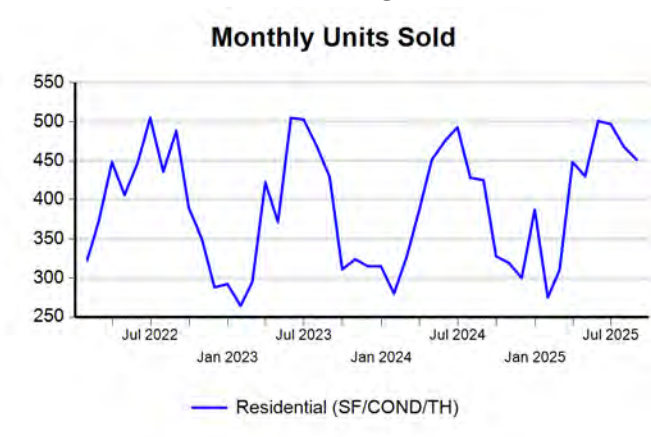


\* Closed Sale counts for most recent 3 months are Preliminary.



Trend Analysis By County: Lubbock County

Residential, All (New and Existing)



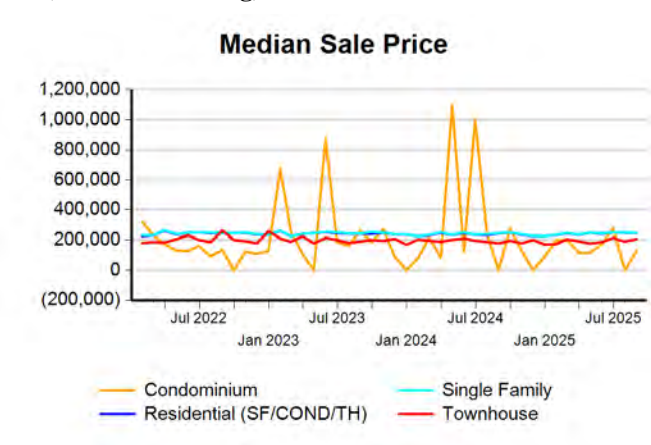
Single Family, New vs. Existing



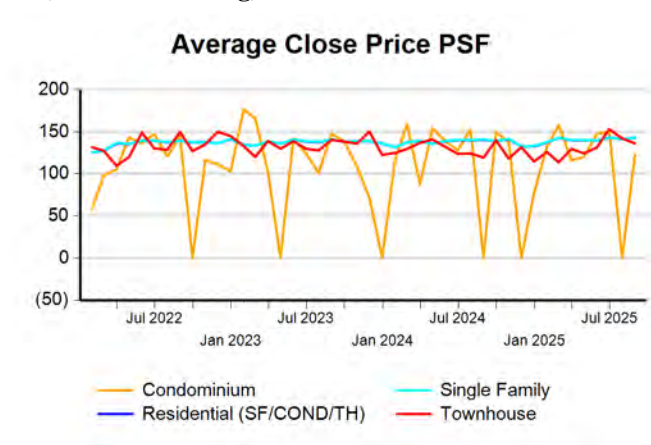
COND/TH, All (New and Existing)



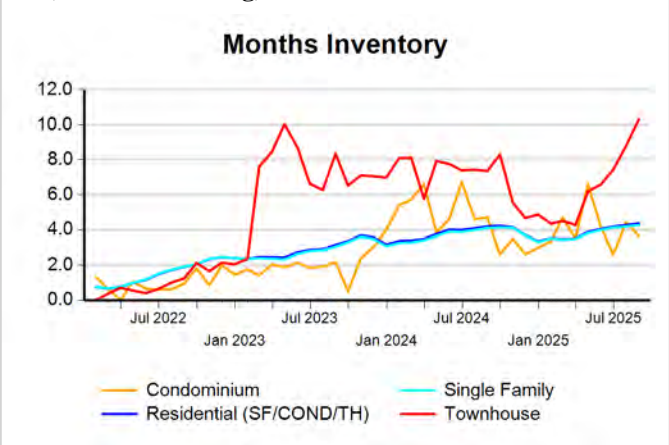
All (New and Existing) Construction



All (New and Existing) Construction

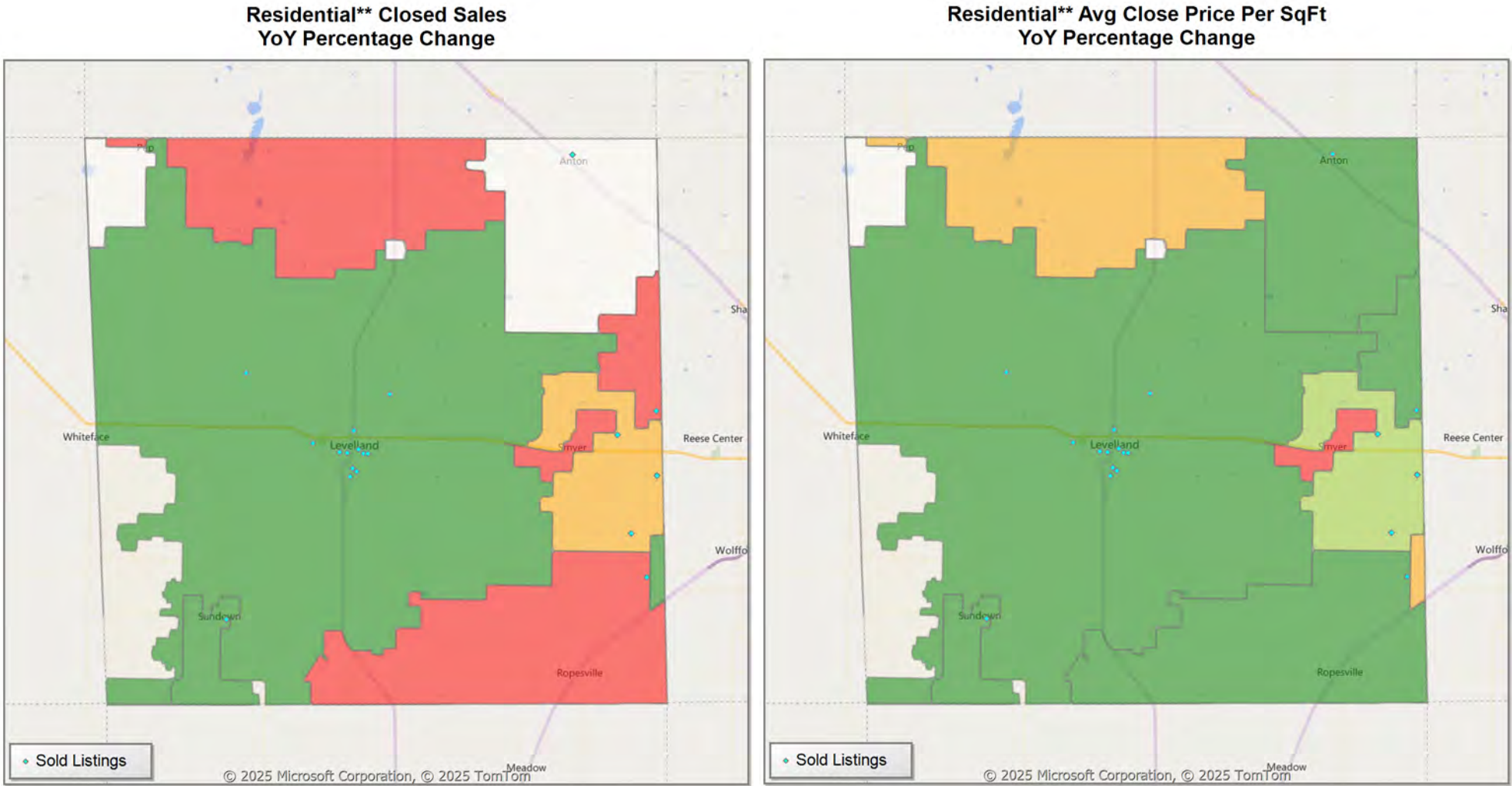


All (New and Existing) Construction



\* Closed Sale counts for most recent 3 months are Preliminary.

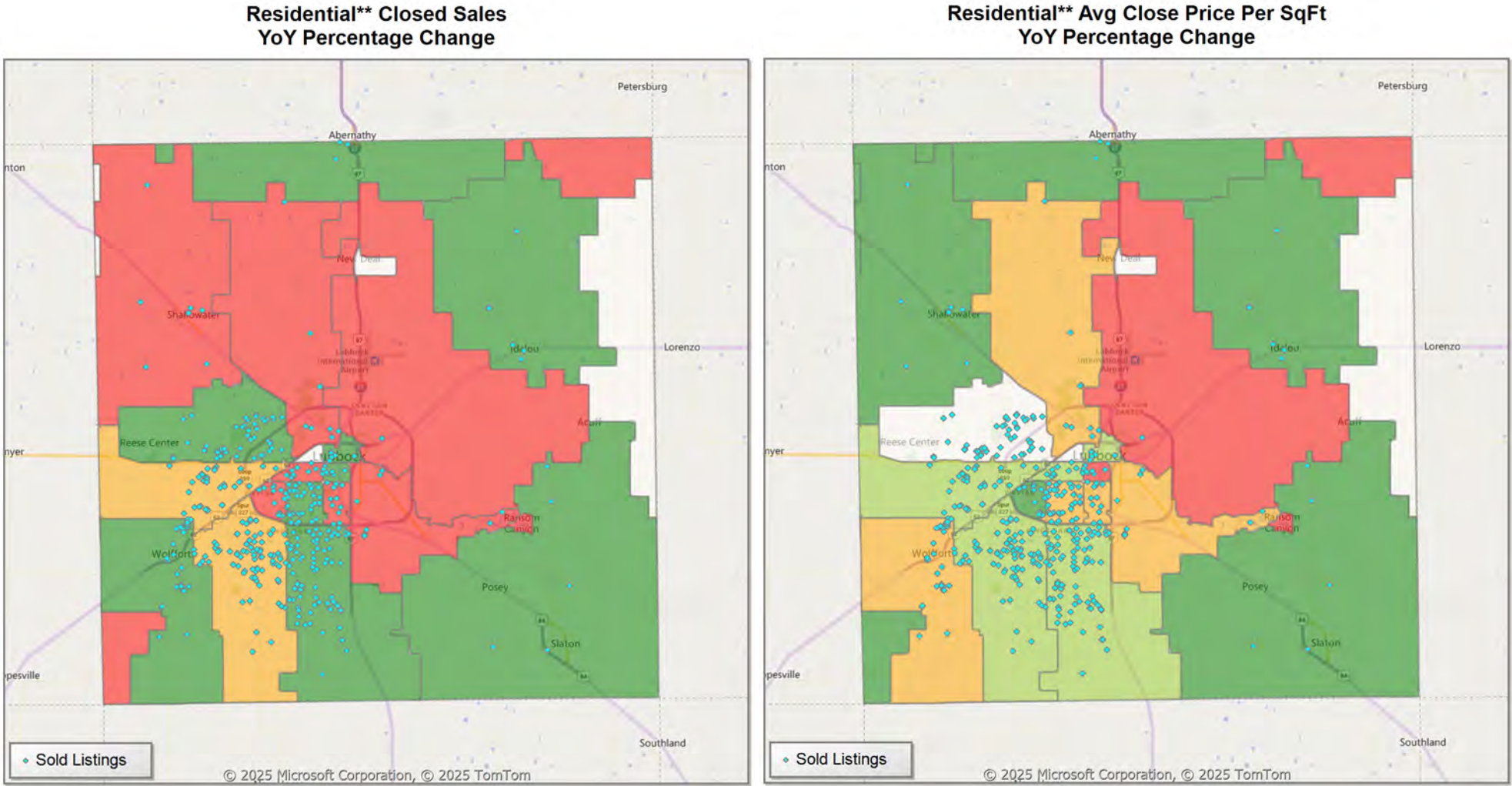
Comparison By Zip Code\* in Hockley County



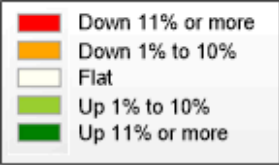
\* US Census Zip Code Tabulation Area  
\*\* Residential includes Single Family, Condominium and Townhouse.



Comparison By Zip Code\* in Lubbock County

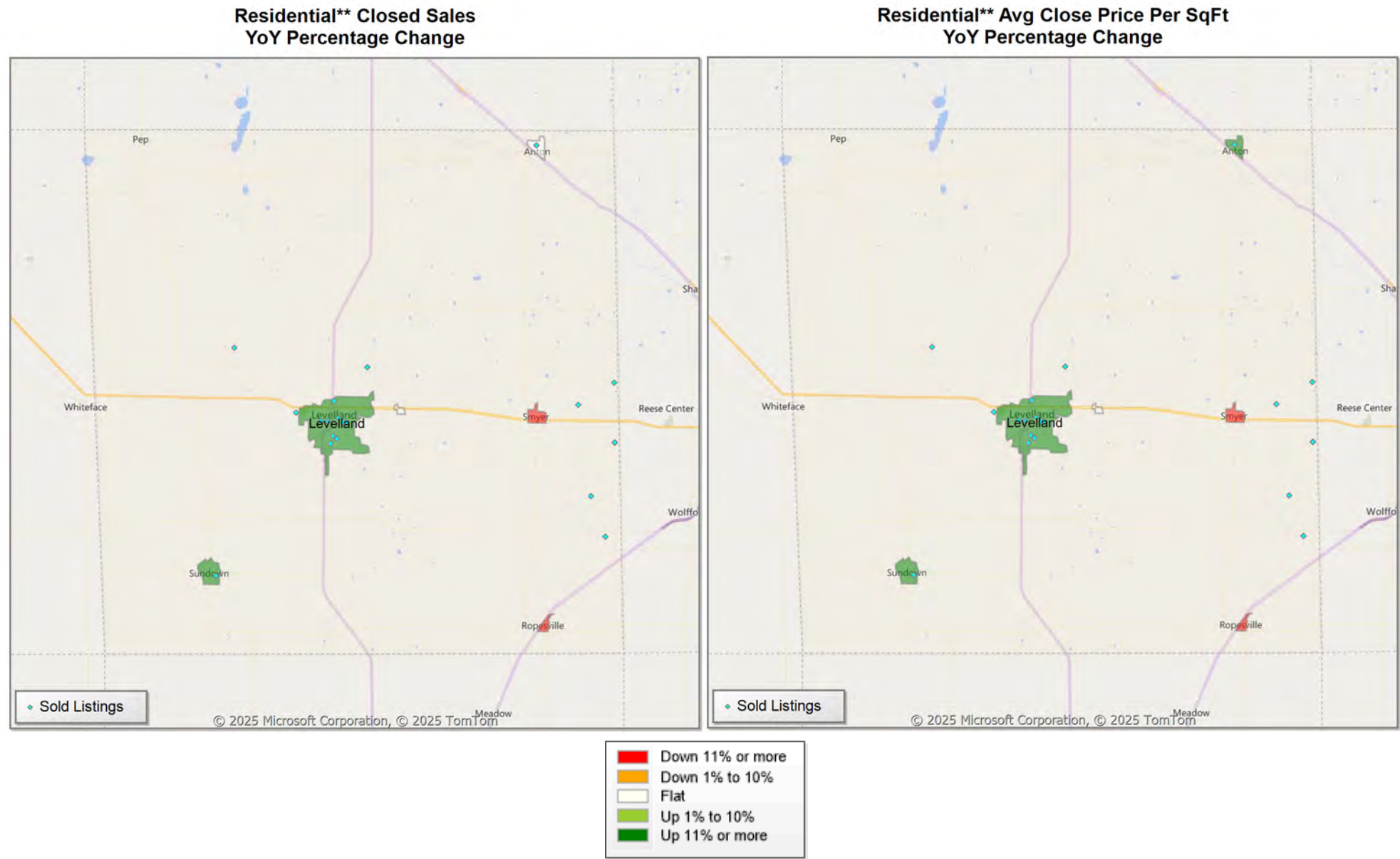


\* US Census Zip Code Tabulation Area  
\*\* Residential includes Single Family, Condominium and Townhouse.



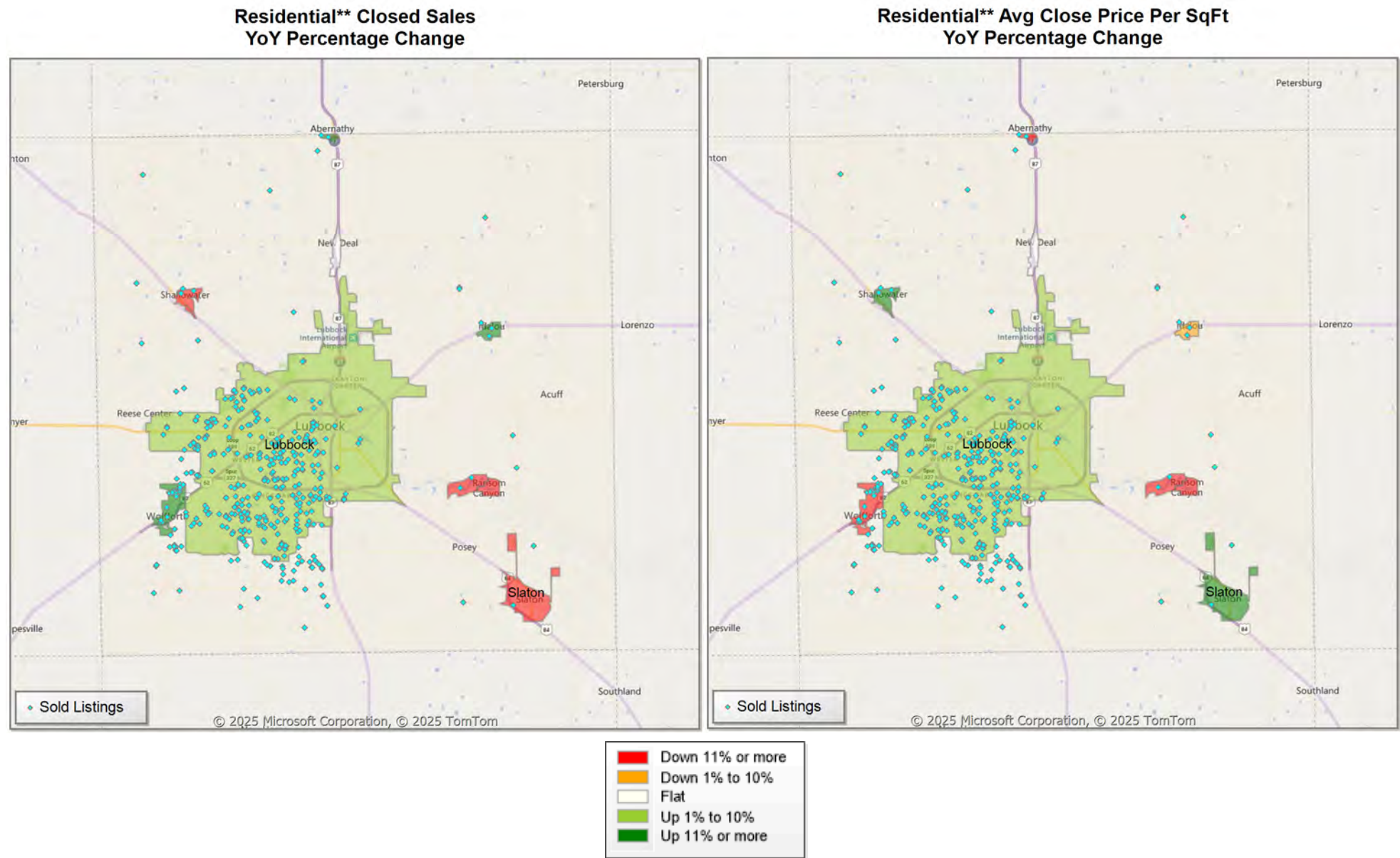


Comparison By Local Market Area\* in Hockley County



\* Census Place Group  
\*\* Residential includes Single Family, Condominium and Townhouse.

Comparison By Local Market Area\* in Lubbock County



\* Census Place Group  
\*\* Residential includes Single Family, Condominium and Townhouse.

Market Analysis By Local Market Area\*: Abernathy

Property Type	Closed Sales**	YoY%	Dollar Volume	YoY%	Average Price	YoY%	Median Price	YoY%	Price/ Sqft	YoY%	DOM	New Listings	Active Listings	Pending Sales	Months Inventory	Close To OLP
<u>All(New and Existing)</u>																
Residential (SF/COND/TH)	4	33.3%	\$824,000	-17.6%	\$206,000	-38.2%	\$176,000	-49.7%	\$95	-22.7%	120	7	11	2	4.7	90.1%
YTD:	19	72.7%	\$3,777,000	51.6%	\$198,789	-12.2%	\$185,000	-7.5%	\$106	-8.6%	71	39	12	19		93.0%
Single Family	4	33.3%	\$824,000	-17.6%	\$206,000	-38.2%	\$176,000	-49.7%	\$95	-22.7%	120	7	11	2	4.7	90.1%
YTD:	19	72.7%	\$3,777,000	51.6%	\$198,789	-12.2%	\$185,000	-7.5%	\$106	-8.6%	71	39	12	19		93.0%
Townhouse	-	0.0%	-	0.0%	-	0.0%	-	0.0%	-	0.0%	-	-	-	-	-	0.0%
YTD:	-	0.0%	-	0.0%	-	0.0%	-	0.0%	-	0.0%	-	-	-	-	-	0.0%
Condominium	-	0.0%	-	0.0%	-	0.0%	-	0.0%	-	0.0%	-	-	-	-	-	0.0%
YTD:	-	0.0%	-	0.0%	-	0.0%	-	0.0%	-	0.0%	-	-	-	-	-	0.0%
<u>Existing Home</u>																
Residential (SF/COND/TH)	4	33.3%	\$824,000	-17.6%	\$206,000	-38.2%	\$176,000	-49.7%	\$95	-22.7%	120	7	10	2	4.3	90.1%
YTD:	19	72.7%	\$3,777,000	51.6%	\$198,789	-12.2%	\$185,000	-7.5%	\$106	-8.6%	71	38	12	19		93.0%
Single Family	4	33.3%	\$824,000	-17.6%	\$206,000	-38.2%	\$176,000	-49.7%	\$95	-22.7%	120	7	10	2	4.3	90.1%
YTD:	19	72.7%	\$3,777,000	51.6%	\$198,789	-12.2%	\$185,000	-7.5%	\$106	-8.6%	71	38	12	19		93.0%
Townhouse	-	0.0%	-	0.0%	-	0.0%	-	0.0%	-	0.0%	-	-	-	-	-	0.0%
YTD:	-	0.0%	-	0.0%	-	0.0%	-	0.0%	-	0.0%	-	-	-	-	-	0.0%
Condominium	-	0.0%	-	0.0%	-	0.0%	-	0.0%	-	0.0%	-	-	-	-	-	0.0%
YTD:	-	0.0%	-	0.0%	-	0.0%	-	0.0%	-	0.0%	-	-	-	-	-	0.0%
<u>New Construction</u>																
Residential (SF/COND/TH)	-	0.0%	-	0.0%	-	0.0%	-	0.0%	-	0.0%	-	-	1	-	-	0.0%
YTD:	-	0.0%	-	0.0%	-	0.0%	-	0.0%	-	0.0%	-	1	1	-	-	0.0%
Single Family	-	0.0%	-	0.0%	-	0.0%	-	0.0%	-	0.0%	-	-	1	-	-	0.0%
YTD:	-	0.0%	-	0.0%	-	0.0%	-	0.0%	-	0.0%	-	1	1	-	-	0.0%
Townhouse	-	0.0%	-	0.0%	-	0.0%	-	0.0%	-	0.0%	-	-	-	-	-	0.0%
YTD:	-	0.0%	-	0.0%	-	0.0%	-	0.0%	-	0.0%	-	-	-	-	-	0.0%
Condominium	-	0.0%	-	0.0%	-	0.0%	-	0.0%	-	0.0%	-	-	-	-	-	0.0%
YTD:	-	0.0%	-	0.0%	-	0.0%	-	0.0%	-	0.0%	-	-	-	-	-	0.0%

\* Local Market Area Code: 2; Type: Census Place Group

\*\* Closed Sale counts for most recent 3 months are Preliminary.



Market Analysis By Local Market Area\*: Anton

Property Type	Closed Sales**	YoY%	Dollar Volume	YoY%	Average Price	YoY%	Median Price	YoY%	Price/ Sqft	YoY%	DOM	New Listings	Active Listings	Pending Sales	Months Inventory	Close To OLP
<u>All(New and Existing)</u>																
Residential (SF/COND/TH)	1	0.0%	\$120,000	71.4%	\$120,000	71.4%	\$120,000	71.4%	\$77	92.4%	7	1	2	2	2.4	100.0%
YTD:	8	166.7%	\$1,214,900	285.7%	\$151,863	44.6%	\$162,500	47.7%	\$74	0.4%	79	11	3	9		90.1%
Single Family	1	0.0%	\$120,000	71.4%	\$120,000	71.4%	\$120,000	71.4%	\$77	92.4%	7	1	2	2	2.4	100.0%
YTD:	8	166.7%	\$1,214,900	285.7%	\$151,863	44.6%	\$162,500	47.7%	\$74	0.4%	79	11	3	9		90.1%
Townhouse	-	0.0%	-	0.0%	-	0.0%	-	0.0%	-	0.0%	-	-	-	-	-	0.0%
YTD:	-	0.0%	-	0.0%	-	0.0%	-	0.0%	-	0.0%	-	-	-	-	-	0.0%
Condominium	-	0.0%	-	0.0%	-	0.0%	-	0.0%	-	0.0%	-	-	-	-	-	0.0%
YTD:	-	0.0%	-	0.0%	-	0.0%	-	0.0%	-	0.0%	-	-	-	-	-	0.0%
<u>Existing Home</u>																
Residential (SF/COND/TH)	1	0.0%	\$120,000	71.4%	\$120,000	71.4%	\$120,000	71.4%	\$77	92.4%	7	1	2	2	2.4	100.0%
YTD:	8	166.7%	\$1,214,900	285.7%	\$151,863	44.6%	\$162,500	47.7%	\$74	0.4%	79	11	3	9		90.1%
Single Family	1	0.0%	\$120,000	71.4%	\$120,000	71.4%	\$120,000	71.4%	\$77	92.4%	7	1	2	2	2.4	100.0%
YTD:	8	166.7%	\$1,214,900	285.7%	\$151,863	44.6%	\$162,500	47.7%	\$74	0.4%	79	11	3	9		90.1%
Townhouse	-	0.0%	-	0.0%	-	0.0%	-	0.0%	-	0.0%	-	-	-	-	-	0.0%
YTD:	-	0.0%	-	0.0%	-	0.0%	-	0.0%	-	0.0%	-	-	-	-	-	0.0%
Condominium	-	0.0%	-	0.0%	-	0.0%	-	0.0%	-	0.0%	-	-	-	-	-	0.0%
YTD:	-	0.0%	-	0.0%	-	0.0%	-	0.0%	-	0.0%	-	-	-	-	-	0.0%
<u>New Construction</u>																
Residential (SF/COND/TH)	-	0.0%	-	0.0%	-	0.0%	-	0.0%	-	0.0%	-	-	-	-	-	0.0%
YTD:	-	0.0%	-	0.0%	-	0.0%	-	0.0%	-	0.0%	-	-	-	-	-	0.0%
Single Family	-	0.0%	-	0.0%	-	0.0%	-	0.0%	-	0.0%	-	-	-	-	-	0.0%
YTD:	-	0.0%	-	0.0%	-	0.0%	-	0.0%	-	0.0%	-	-	-	-	-	0.0%
Townhouse	-	0.0%	-	0.0%	-	0.0%	-	0.0%	-	0.0%	-	-	-	-	-	0.0%
YTD:	-	0.0%	-	0.0%	-	0.0%	-	0.0%	-	0.0%	-	-	-	-	-	0.0%
Condominium	-	0.0%	-	0.0%	-	0.0%	-	0.0%	-	0.0%	-	-	-	-	-	0.0%
YTD:	-	0.0%	-	0.0%	-	0.0%	-	0.0%	-	0.0%	-	-	-	-	-	0.0%

\* Local Market Area Code: 1014; Type: Census Place Group

\*\* Closed Sale counts for most recent 3 months are Preliminary.

Market Analysis By Local Market Area\*: Buffalo Springs

Property Type	Closed Sales**	YoY%	Dollar Volume	YoY%	Average Price	YoY%	Median Price	YoY%	Price/ Sqft	YoY%	DOM	New Listings	Active Listings	Pending Sales	Months Inventory	Close To OLP
<u>All(New and Existing)</u>																
Residential (SF/COND/TH)	2	-33.3%	\$737,500	-29.7%	\$368,750	5.5%	\$368,750	11.1%	\$128	-34.9%	46	3	15	-	12.0	91.8%
YTD:	11	-8.3%	\$4,739,000	35.7%	\$430,818	48.0%	\$330,000	7.1%	\$190	12.2%	63	34	12	12		89.4%
Single Family	2	-33.3%	\$737,500	-29.7%	\$368,750	5.5%	\$368,750	11.1%	\$128	-34.9%	46	3	15	-	12.0	91.8%
YTD:	11	-8.3%	\$4,739,000	35.7%	\$430,818	48.0%	\$330,000	7.1%	\$190	12.2%	63	34	12	12		89.4%
Townhouse	-	0.0%	-	0.0%	-	0.0%	-	0.0%	-	0.0%	-	-	-	-	-	0.0%
YTD:	-	0.0%	-	0.0%	-	0.0%	-	0.0%	-	0.0%	-	-	-	-	-	0.0%
Condominium	-	0.0%	-	0.0%	-	0.0%	-	0.0%	-	0.0%	-	-	-	-	-	0.0%
YTD:	-	0.0%	-	0.0%	-	0.0%	-	0.0%	-	0.0%	-	-	-	-	-	0.0%
<u>Existing Home</u>																
Residential (SF/COND/TH)	2	-33.3%	\$737,500	-29.7%	\$368,750	5.5%	\$368,750	11.1%	\$128	-34.9%	46	3	15	-	12.0	91.8%
YTD:	11	-8.3%	\$4,739,000	35.7%	\$430,818	48.0%	\$330,000	7.1%	\$190	12.2%	63	34	12	12		89.4%
Single Family	2	-33.3%	\$737,500	-29.7%	\$368,750	5.5%	\$368,750	11.1%	\$128	-34.9%	46	3	15	-	12.0	91.8%
YTD:	11	-8.3%	\$4,739,000	35.7%	\$430,818	48.0%	\$330,000	7.1%	\$190	12.2%	63	34	12	12		89.4%
Townhouse	-	0.0%	-	0.0%	-	0.0%	-	0.0%	-	0.0%	-	-	-	-	-	0.0%
YTD:	-	0.0%	-	0.0%	-	0.0%	-	0.0%	-	0.0%	-	-	-	-	-	0.0%
Condominium	-	0.0%	-	0.0%	-	0.0%	-	0.0%	-	0.0%	-	-	-	-	-	0.0%
YTD:	-	0.0%	-	0.0%	-	0.0%	-	0.0%	-	0.0%	-	-	-	-	-	0.0%
<u>New Construction</u>																
Residential (SF/COND/TH)	-	0.0%	-	0.0%	-	0.0%	-	0.0%	-	0.0%	-	-	-	-	-	0.0%
YTD:	-	0.0%	-	0.0%	-	0.0%	-	0.0%	-	0.0%	-	-	-	-	-	0.0%
Single Family	-	0.0%	-	0.0%	-	0.0%	-	0.0%	-	0.0%	-	-	-	-	-	0.0%
YTD:	-	0.0%	-	0.0%	-	0.0%	-	0.0%	-	0.0%	-	-	-	-	-	0.0%
Townhouse	-	0.0%	-	0.0%	-	0.0%	-	0.0%	-	0.0%	-	-	-	-	-	0.0%
YTD:	-	0.0%	-	0.0%	-	0.0%	-	0.0%	-	0.0%	-	-	-	-	-	0.0%
Condominium	-	0.0%	-	0.0%	-	0.0%	-	0.0%	-	0.0%	-	-	-	-	-	0.0%
YTD:	-	0.0%	-	0.0%	-	0.0%	-	0.0%	-	0.0%	-	-	-	-	-	0.0%

\* Local Market Area Code: 135; Type: Census Place Group  
\*\* Closed Sale counts for most recent 3 months are Preliminary.

Market Analysis By Local Market Area\*: Idalou

Property Type	Closed Sales**		YoY%	Dollar Volume	YoY%	Average Price	YoY%	Median Price	YoY%	Price/ Sqft	YoY%	DOM	New Listings	Active Listings	Pending Sales	Months Inventory	Close To OLP
<u>All(New and Existing)</u>																	
Residential (SF/COND/TH)	2	100.0%		\$470,000	233.3%	\$235,000	66.7%	\$235,000	66.7%	\$135	-4.4%	12	5	4	4	4.4	94.5%
YTD:	9	-50.0%		\$1,714,000	-58.7%	\$190,444	-17.3%	\$196,000	-3.2%	\$105	-14.0%	86	14	4	13		94.0%
Single Family	2	100.0%		\$470,000	233.3%	\$235,000	66.7%	\$235,000	66.7%	\$135	-4.4%	12	5	4	4	4.4	94.5%
YTD:	9	-50.0%		\$1,714,000	-58.7%	\$190,444	-17.3%	\$196,000	-3.2%	\$105	-14.0%	86	14	4	13		94.0%
Townhouse	-	0.0%		-	0.0%	-	0.0%	-	0.0%	-	0.0%	-	-	-	-	-	0.0%
YTD:	-	0.0%		-	0.0%	-	0.0%	-	0.0%	-	0.0%	-	-	-	-		0.0%
Condominium	-	0.0%		-	0.0%	-	0.0%	-	0.0%	-	0.0%	-	-	-	-	-	0.0%
YTD:	-	0.0%		-	0.0%	-	0.0%	-	0.0%	-	0.0%	-	-	-	-		0.0%
<u>Existing Home</u>																	
Residential (SF/COND/TH)	2	100.0%		\$470,000	233.3%	\$235,000	66.7%	\$235,000	66.7%	\$135	-4.4%	12	5	4	4	4.4	94.5%
YTD:	9	-50.0%		\$1,714,000	-58.7%	\$190,444	-17.3%	\$196,000	-3.2%	\$105	-14.0%	86	14	4	13		94.0%
Single Family	2	100.0%		\$470,000	233.3%	\$235,000	66.7%	\$235,000	66.7%	\$135	-4.4%	12	5	4	4	4.4	94.5%
YTD:	9	-50.0%		\$1,714,000	-58.7%	\$190,444	-17.3%	\$196,000	-3.2%	\$105	-14.0%	86	14	4	13		94.0%
Townhouse	-	0.0%		-	0.0%	-	0.0%	-	0.0%	-	0.0%	-	-	-	-	-	0.0%
YTD:	-	0.0%		-	0.0%	-	0.0%	-	0.0%	-	0.0%	-	-	-	-		0.0%
Condominium	-	0.0%		-	0.0%	-	0.0%	-	0.0%	-	0.0%	-	-	-	-	-	0.0%
YTD:	-	0.0%		-	0.0%	-	0.0%	-	0.0%	-	0.0%	-	-	-	-		0.0%
<u>New Construction</u>																	
Residential (SF/COND/TH)	-	0.0%		-	0.0%	-	0.0%	-	0.0%	-	0.0%	-	-	-	-	-	0.0%
YTD:	-	0.0%		-	0.0%	-	0.0%	-	0.0%	-	0.0%	-	-	-	-		0.0%
Single Family	-	0.0%		-	0.0%	-	0.0%	-	0.0%	-	0.0%	-	-	-	-	-	0.0%
YTD:	-	0.0%		-	0.0%	-	0.0%	-	0.0%	-	0.0%	-	-	-	-		0.0%
Townhouse	-	0.0%		-	0.0%	-	0.0%	-	0.0%	-	0.0%	-	-	-	-	-	0.0%
YTD:	-	0.0%		-	0.0%	-	0.0%	-	0.0%	-	0.0%	-	-	-	-		0.0%
Condominium	-	0.0%		-	0.0%	-	0.0%	-	0.0%	-	0.0%	-	-	-	-	-	0.0%
YTD:	-	0.0%		-	0.0%	-	0.0%	-	0.0%	-	0.0%	-	-	-	-		0.0%

\* Local Market Area Code: 456; Type: Census Place Group  
\*\* Closed Sale counts for most recent 3 months are Preliminary.



Market Analysis By Local Market Area\*: Levelland

Property Type	Closed Sales**		YoY%	Dollar Volume		YoY%	Average Price		YoY%	Median Price		YoY%	Price/ Sqft	YoY%	DOM	New Listings	Active Listings	Pending Sales	Months Inventory	Close To OLP
<u>All(New and Existing)</u>																				
Residential (SF/COND/TH)	9	125.0%		\$1,950,750	140.8%		\$216,750	7.0%		\$197,000	-3.0%		\$108	12.6%	19	21	42	11	5.1	99.1%
YTD:	70	-23.9%		\$14,988,950	-11.7%		\$214,128	16.1%		\$209,250	11.6%		\$103	8.5%	83	120	29	76		95.0%
Single Family	9	125.0%		\$1,950,750	140.8%		\$216,750	7.0%		\$197,000	-3.0%		\$108	12.6%	19	21	42	11	5.1	99.1%
YTD:	70	-23.1%		\$14,988,950	-11.0%		\$214,128	15.8%		\$209,250	10.7%		\$103	7.4%	83	120	29	76		95.0%
Townhouse	-	0.0%		-	0.0%		-	0.0%		-	0.0%		-	0.0%	-	-	-	-	-	0.0%
YTD:	-	0.0%		-	0.0%		-	0.0%		-	0.0%		-	0.0%	-	-	-	-	-	0.0%
Condominium	-	0.0%		-	0.0%		-	0.0%		-	0.0%		-	0.0%	-	-	-	-	-	0.0%
YTD:	-	-100.0%		-	-100.0%		-	-100.0%		-	-100.0%		-	-100.0%	-	-	-	-	-	0.0%
<u>Existing Home</u>																				
Residential (SF/COND/TH)	9	125.0%		\$1,950,750	140.8%		\$216,750	7.0%		\$197,000	-3.0%		\$108	12.6%	19	21	42	10	5.1	99.1%
YTD:	70	-22.2%		\$14,988,950	-8.8%		\$214,128	17.2%		\$209,250	12.8%		\$103	9.8%	83	119	29	75		95.0%
Single Family	9	125.0%		\$1,950,750	140.8%		\$216,750	7.0%		\$197,000	-3.0%		\$108	12.6%	19	21	42	10	5.1	99.1%
YTD:	70	-21.4%		\$14,988,950	-8.0%		\$214,128	16.9%		\$209,250	12.6%		\$103	8.6%	83	119	29	75		95.0%
Townhouse	-	0.0%		-	0.0%		-	0.0%		-	0.0%		-	0.0%	-	-	-	-	-	0.0%
YTD:	-	0.0%		-	0.0%		-	0.0%		-	0.0%		-	0.0%	-	-	-	-	-	0.0%
Condominium	-	0.0%		-	0.0%		-	0.0%		-	0.0%		-	0.0%	-	-	-	-	-	0.0%
YTD:	-	-100.0%		-	-100.0%		-	-100.0%		-	-100.0%		-	-100.0%	-	-	-	-	-	0.0%
<u>New Construction</u>																				
Residential (SF/COND/TH)	-	0.0%		-	0.0%		-	0.0%		-	0.0%		-	0.0%	-	-	-	1	-	0.0%
YTD:	-	-100.0%		-	-100.0%		-	-100.0%		-	-100.0%		-	-100.0%	-	1	1	1		0.0%
Single Family	-	0.0%		-	0.0%		-	0.0%		-	0.0%		-	0.0%	-	-	-	1	-	0.0%
YTD:	-	-100.0%		-	-100.0%		-	-100.0%		-	-100.0%		-	-100.0%	-	1	1	1		0.0%
Townhouse	-	0.0%		-	0.0%		-	0.0%		-	0.0%		-	0.0%	-	-	-	-	-	0.0%
YTD:	-	0.0%		-	0.0%		-	0.0%		-	0.0%		-	0.0%	-	-	-	-	-	0.0%
Condominium	-	0.0%		-	0.0%		-	0.0%		-	0.0%		-	0.0%	-	-	-	-	-	0.0%
YTD:	-	0.0%		-	0.0%		-	0.0%		-	0.0%		-	0.0%	-	-	-	-	-	0.0%

\* Local Market Area Code: 220; Type: Census Place Group  
\*\* Closed Sale counts for most recent 3 months are Preliminary.

Market Analysis By Local Market Area\*: Lubbock

Property Type	Closed Sales**	YoY%	Dollar Volume	YoY%	Average Price	YoY%	Median Price	YoY%	Price/ Sqft	YoY%	DOM	New Listings	Active Listings	Pending Sales	Months Inventory	Close To OLP
<u>All(New and Existing)</u>																
Residential (SF/COND/TH)	319	9.6%	\$84,466,294	14.5%	\$264,785	4.4%	\$225,000	3.1%	\$132	1.3%	43	493	1,213	279	4.3	95.2%
YTD:	2,490	11.0%	\$666,634,240	13.0%	\$267,725	1.8%	\$230,000	2.2%	\$133	1.7%	47	4,532	1,060	2,613		95.6%
Single Family	309	10.0%	\$82,695,389	15.1%	\$267,623	4.7%	\$225,000	2.5%	\$132	1.0%	42	478	1,151	275	4.1	95.3%
YTD:	2,438	12.3%	\$656,060,113	14.6%	\$269,098	2.1%	\$230,000	2.2%	\$133	1.8%	46	4,412	1,016	2,560		95.6%
Townhouse	5	-50.0%	\$919,500	-52.6%	\$183,900	-5.1%	\$206,000	16.1%	\$136	16.0%	61	13	55	3	14.0	95.8%
YTD:	34	-38.2%	\$7,411,625	-32.1%	\$217,989	9.9%	\$203,500	6.0%	\$129	1.8%	77	93	36	37		94.2%
Condominium	4	100.0%	\$615,000	100.0%	\$153,750	100.0%	\$127,500	100.0%	\$123	100.0%	42	2	7	1	3.7	90.2%
YTD:	17	6.3%	\$2,914,000	-53.8%	\$171,412	-56.6%	\$130,000	-39.3%	\$135	-7.9%	51	27	7	16		93.1%
<u>Existing Home</u>																
Residential (SF/COND/TH)	277	9.1%	\$70,435,983	10.5%	\$254,282	1.3%	\$215,000	2.6%	\$127	0.9%	42	444	1,110	246	4.6	95.0%
YTD:	2,085	5.3%	\$545,349,153	7.7%	\$261,558	2.3%	\$221,750	2.0%	\$128	0.7%	48	4,024	962	2,208		95.3%
Single Family	269	9.8%	\$69,155,709	11.6%	\$257,084	1.6%	\$216,500	3.1%	\$127	0.6%	42	429	1,056	242	4.5	95.1%
YTD:	2,036	5.8%	\$535,496,451	8.7%	\$263,014	2.8%	\$222,500	2.1%	\$128	0.6%	47	3,910	924	2,158		95.4%
Townhouse	4	-55.6%	\$690,500	-60.5%	\$172,625	-11.0%	\$153,000	-12.6%	\$129	11.4%	52	13	47	3	12.5	94.3%
YTD:	32	-18.0%	\$6,957,625	-7.2%	\$217,426	13.1%	\$202,000	15.4%	\$128	9.8%	79	87	30	34		93.8%
Condominium	4	100.0%	\$615,000	100.0%	\$153,750	100.0%	\$127,500	100.0%	\$123	100.0%	42	2	7	1	3.7	90.2%
YTD:	17	6.3%	\$2,914,000	-53.8%	\$171,412	-56.6%	\$130,000	-39.3%	\$135	-7.9%	51	27	7	16		93.1%
<u>New Construction</u>																
Residential (SF/COND/TH)	41	10.8%	\$13,741,369	36.8%	\$335,155	23.5%	\$262,000	14.9%	\$166	2.3%	48	49	103	33	2.4	96.6%
YTD:	404	53.6%	\$120,968,905	45.1%	\$299,428	-5.5%	\$251,340	-4.1%	\$160	-0.3%	42	508	98	405		96.8%
Single Family	40	11.1%	\$13,515,091	37.2%	\$337,877	23.5%	\$269,000	18.0%	\$166	1.8%	47	49	95	33	2.2	96.5%
YTD:	402	62.8%	\$120,515,266	50.8%	\$299,789	-7.4%	\$251,990	-5.8%	\$160	-0.6%	42	502	92	402		96.8%
Townhouse	1	0.0%	\$229,000	19.3%	\$229,000	19.3%	\$229,000	19.3%	\$167	23.3%	99	-	8	-	48.0	101.8%
YTD:	2	-87.5%	\$454,000	-86.7%	\$227,000	6.4%	\$227,000	7.1%	\$159	3.4%	57	6	5	3		100.9%
Condominium	-	0.0%	-	0.0%	-	0.0%	-	0.0%	-	0.0%	-	-	-	-	-	0.0%
YTD:	-	0.0%	-	0.0%	-	0.0%	-	0.0%	-	0.0%	-	-	-	-	-	0.0%

\* Local Market Area Code: 596; Type: Census Place Group  
\*\* Closed Sale counts for most recent 3 months are Preliminary.

Market Analysis By Local Market Area\*: New Deal

Property Type	Closed Sales**		YoY%	Dollar Volume	YoY%	Average Price	YoY%	Median Price	YoY%	Price/ Sqft	YoY%	DOM	New Listings	Active Listings	Pending Sales	Months Inventory	Close To OLP
<u>All(New and Existing)</u>																	
Residential (SF/COND/TH)	-	0.0%	-	0.0%	-	0.0%	-	0.0%	-	0.0%	-	-	-	-	2	-	0.0%
YTD:	3	-40.0%	\$426,000	-54.3%	\$142,000	-23.9%	\$140,000	-28.0%	\$98	-7.5%	7	8	1	5		100.8%	
Single Family	-	0.0%	-	0.0%	-	0.0%	-	0.0%	-	0.0%	-	-	-	-	2	-	0.0%
YTD:	3	-40.0%	\$426,000	-54.3%	\$142,000	-23.9%	\$140,000	-28.0%	\$98	-7.5%	7	8	1	5		100.8%	
Townhouse	-	0.0%	-	0.0%	-	0.0%	-	0.0%	-	0.0%	-	-	-	-	-	-	0.0%
YTD:	-	0.0%	-	0.0%	-	0.0%	-	0.0%	-	0.0%	-	-	-	-	-	-	0.0%
Condominium	-	0.0%	-	0.0%	-	0.0%	-	0.0%	-	0.0%	-	-	-	-	-	-	0.0%
YTD:	-	0.0%	-	0.0%	-	0.0%	-	0.0%	-	0.0%	-	-	-	-	-	-	0.0%
<u>Existing Home</u>																	
Residential (SF/COND/TH)	-	0.0%	-	0.0%	-	0.0%	-	0.0%	-	0.0%	-	-	-	-	2	-	0.0%
YTD:	3	-25.0%	\$426,000	-37.8%	\$142,000	-17.0%	\$140,000	-18.7%	\$98	5.6%	7	8	1	5		100.8%	
Single Family	-	0.0%	-	0.0%	-	0.0%	-	0.0%	-	0.0%	-	-	-	-	2	-	0.0%
YTD:	3	-25.0%	\$426,000	-37.8%	\$142,000	-17.0%	\$140,000	-18.7%	\$98	5.6%	7	8	1	5		100.8%	
Townhouse	-	0.0%	-	0.0%	-	0.0%	-	0.0%	-	0.0%	-	-	-	-	-	-	0.0%
YTD:	-	0.0%	-	0.0%	-	0.0%	-	0.0%	-	0.0%	-	-	-	-	-	-	0.0%
Condominium	-	0.0%	-	0.0%	-	0.0%	-	0.0%	-	0.0%	-	-	-	-	-	-	0.0%
YTD:	-	0.0%	-	0.0%	-	0.0%	-	0.0%	-	0.0%	-	-	-	-	-	-	0.0%
<u>New Construction</u>																	
Residential (SF/COND/TH)	-	0.0%	-	0.0%	-	0.0%	-	0.0%	-	0.0%	-	-	-	-	-	-	0.0%
YTD:	-	-100.0%	-	-100.0%	-	-100.0%	-	-100.0%	-	-100.0%	-	-	-	-	-	-	0.0%
Single Family	-	0.0%	-	0.0%	-	0.0%	-	0.0%	-	0.0%	-	-	-	-	-	-	0.0%
YTD:	-	-100.0%	-	-100.0%	-	-100.0%	-	-100.0%	-	-100.0%	-	-	-	-	-	-	0.0%
Townhouse	-	0.0%	-	0.0%	-	0.0%	-	0.0%	-	0.0%	-	-	-	-	-	-	0.0%
YTD:	-	0.0%	-	0.0%	-	0.0%	-	0.0%	-	0.0%	-	-	-	-	-	-	0.0%
Condominium	-	0.0%	-	0.0%	-	0.0%	-	0.0%	-	0.0%	-	-	-	-	-	-	0.0%
YTD:	-	0.0%	-	0.0%	-	0.0%	-	0.0%	-	0.0%	-	-	-	-	-	-	0.0%

\* Local Market Area Code: 700; Type: Census Place Group  
 \*\* Closed Sale counts for most recent 3 months are Preliminary.



Market Analysis By Local Market Area\*: Ransom Canyon

Property Type	Closed Sales**	YoY%	Dollar Volume	YoY%	Average Price	YoY%	Median Price	YoY%	Price/ Sqft	YoY%	DOM	New Listings	Active Listings	Pending Sales	Months Inventory	Close To OLP
<u>All(New and Existing)</u>																
Residential (SF/COND/TH)	-	-100.0%	-	-100.0%	-	-100.0%	-	-100.0%	-	-100.0%	-	1	12	1	5.1	0.0%
YTD:	18	-25.0%	\$7,599,810	-14.5%	\$422,212	14.0%	\$397,500	14.8%	\$173	13.6%	59	32	12	19		95.8%
Single Family	-	-100.0%	-	-100.0%	-	-100.0%	-	-100.0%	-	-100.0%	-	1	12	1	5.1	0.0%
YTD:	18	-25.0%	\$7,599,810	-14.5%	\$422,212	14.0%	\$397,500	14.8%	\$173	13.6%	59	32	12	19		95.8%
Townhouse	-	0.0%	-	0.0%	-	0.0%	-	0.0%	-	0.0%	-	-	-	-	-	0.0%
YTD:	-	0.0%	-	0.0%	-	0.0%	-	0.0%	-	0.0%	-	-	-	-	-	0.0%
Condominium	-	0.0%	-	0.0%	-	0.0%	-	0.0%	-	0.0%	-	-	-	-	-	0.0%
YTD:	-	0.0%	-	0.0%	-	0.0%	-	0.0%	-	0.0%	-	-	-	-	-	0.0%
<u>Existing Home</u>																
Residential (SF/COND/TH)	-	-100.0%	-	-100.0%	-	-100.0%	-	-100.0%	-	-100.0%	-	1	12	1	5.3	0.0%
YTD:	18	-25.0%	\$7,599,810	-14.5%	\$422,212	14.0%	\$397,500	14.8%	\$173	13.6%	59	32	12	19		95.8%
Single Family	-	-100.0%	-	-100.0%	-	-100.0%	-	-100.0%	-	-100.0%	-	1	12	1	5.3	0.0%
YTD:	18	-25.0%	\$7,599,810	-14.5%	\$422,212	14.0%	\$397,500	14.8%	\$173	13.6%	59	32	12	19		95.8%
Townhouse	-	0.0%	-	0.0%	-	0.0%	-	0.0%	-	0.0%	-	-	-	-	-	0.0%
YTD:	-	0.0%	-	0.0%	-	0.0%	-	0.0%	-	0.0%	-	-	-	-	-	0.0%
Condominium	-	0.0%	-	0.0%	-	0.0%	-	0.0%	-	0.0%	-	-	-	-	-	0.0%
YTD:	-	0.0%	-	0.0%	-	0.0%	-	0.0%	-	0.0%	-	-	-	-	-	0.0%
<u>New Construction</u>																
Residential (SF/COND/TH)	-	0.0%	-	0.0%	-	0.0%	-	0.0%	-	0.0%	-	-	-	-	-	0.0%
YTD:	-	0.0%	-	0.0%	-	0.0%	-	0.0%	-	0.0%	-	-	-	-	-	0.0%
Single Family	-	0.0%	-	0.0%	-	0.0%	-	0.0%	-	0.0%	-	-	-	-	-	0.0%
YTD:	-	0.0%	-	0.0%	-	0.0%	-	0.0%	-	0.0%	-	-	-	-	-	0.0%
Townhouse	-	0.0%	-	0.0%	-	0.0%	-	0.0%	-	0.0%	-	-	-	-	-	0.0%
YTD:	-	0.0%	-	0.0%	-	0.0%	-	0.0%	-	0.0%	-	-	-	-	-	0.0%
Condominium	-	0.0%	-	0.0%	-	0.0%	-	0.0%	-	0.0%	-	-	-	-	-	0.0%
YTD:	-	0.0%	-	0.0%	-	0.0%	-	0.0%	-	0.0%	-	-	-	-	-	0.0%

\* Local Market Area Code: 826; Type: Census Place Group  
\*\* Closed Sale counts for most recent 3 months are Preliminary.

Market Analysis By Local Market Area\*: Ropesville

Property Type	Closed Sales**	YoY%	Dollar Volume	YoY%	Average Price	YoY%	Median Price	YoY%	Price/ Sqft	YoY%	DOM	New Listings	Active Listings	Pending Sales	Months Inventory	Close To OLP
<u>All(New and Existing)</u>																
Residential (SF/COND/TH)	-	-100.0%	-	-100.0%	-	-100.0%	-	-100.0%	-	-100.0%	-	-	-	-	-	0.0%
YTD:	1	0.0%	\$160,000	-28.9%	\$160,000	-28.9%	\$160,000	-28.9%	\$114	18.7%	23	2	1	1		97.0%
Single Family	-	-100.0%	-	-100.0%	-	-100.0%	-	-100.0%	-	-100.0%	-	-	-	-	-	0.0%
YTD:	1	0.0%	\$160,000	-28.9%	\$160,000	-28.9%	\$160,000	-28.9%	\$114	18.7%	23	2	1	1		97.0%
Townhouse	-	0.0%	-	0.0%	-	0.0%	-	0.0%	-	0.0%	-	-	-	-	-	0.0%
YTD:	-	0.0%	-	0.0%	-	0.0%	-	0.0%	-	0.0%	-	-	-	-	-	0.0%
Condominium	-	0.0%	-	0.0%	-	0.0%	-	0.0%	-	0.0%	-	-	-	-	-	0.0%
YTD:	-	0.0%	-	0.0%	-	0.0%	-	0.0%	-	0.0%	-	-	-	-	-	0.0%
<u>Existing Home</u>																
Residential (SF/COND/TH)	-	-100.0%	-	-100.0%	-	-100.0%	-	-100.0%	-	-100.0%	-	-	-	-	-	0.0%
YTD:	1	0.0%	\$160,000	-28.9%	\$160,000	-28.9%	\$160,000	-28.9%	\$114	18.7%	23	2	1	1		97.0%
Single Family	-	-100.0%	-	-100.0%	-	-100.0%	-	-100.0%	-	-100.0%	-	-	-	-	-	0.0%
YTD:	1	0.0%	\$160,000	-28.9%	\$160,000	-28.9%	\$160,000	-28.9%	\$114	18.7%	23	2	1	1		97.0%
Townhouse	-	0.0%	-	0.0%	-	0.0%	-	0.0%	-	0.0%	-	-	-	-	-	0.0%
YTD:	-	0.0%	-	0.0%	-	0.0%	-	0.0%	-	0.0%	-	-	-	-	-	0.0%
Condominium	-	0.0%	-	0.0%	-	0.0%	-	0.0%	-	0.0%	-	-	-	-	-	0.0%
YTD:	-	0.0%	-	0.0%	-	0.0%	-	0.0%	-	0.0%	-	-	-	-	-	0.0%
<u>New Construction</u>																
Residential (SF/COND/TH)	-	0.0%	-	0.0%	-	0.0%	-	0.0%	-	0.0%	-	-	-	-	-	0.0%
YTD:	-	0.0%	-	0.0%	-	0.0%	-	0.0%	-	0.0%	-	-	-	-	-	0.0%
Single Family	-	0.0%	-	0.0%	-	0.0%	-	0.0%	-	0.0%	-	-	-	-	-	0.0%
YTD:	-	0.0%	-	0.0%	-	0.0%	-	0.0%	-	0.0%	-	-	-	-	-	0.0%
Townhouse	-	0.0%	-	0.0%	-	0.0%	-	0.0%	-	0.0%	-	-	-	-	-	0.0%
YTD:	-	0.0%	-	0.0%	-	0.0%	-	0.0%	-	0.0%	-	-	-	-	-	0.0%
Condominium	-	0.0%	-	0.0%	-	0.0%	-	0.0%	-	0.0%	-	-	-	-	-	0.0%
YTD:	-	0.0%	-	0.0%	-	0.0%	-	0.0%	-	0.0%	-	-	-	-	-	0.0%

\* Local Market Area Code: 222; Type: Census Place Group

\*\* Closed Sale counts for most recent 3 months are Preliminary.

Market Analysis By Local Market Area\*: Shallowater

Property Type	Closed Sales**	YoY%	Dollar Volume	YoY%	Average Price	YoY%	Median Price	YoY%	Price/ Sqft	YoY%	DOM	New Listings	Active Listings	Pending Sales	Months Inventory	Close To OLP
<u>All(New and Existing)</u>																
Residential (SF/COND/TH)	2	-75.0%	\$563,000	-74.9%	\$281,500	0.3%	\$281,500	12.4%	\$152	15.8%	193	1	9	1	2.9	93.8%
YTD:	26	-21.2%	\$6,040,400	-20.6%	\$232,323	0.8%	\$219,000	-8.8%	\$123	-0.6%	59	47	12	27		94.9%
Single Family	2	-75.0%	\$563,000	-74.9%	\$281,500	0.3%	\$281,500	12.4%	\$152	15.8%	193	1	9	1	2.9	93.8%
YTD:	26	-21.2%	\$6,040,400	-20.6%	\$232,323	0.8%	\$219,000	-8.8%	\$123	-0.6%	59	47	12	27		94.9%
Townhouse	-	0.0%	-	0.0%	-	0.0%	-	0.0%	-	0.0%	-	-	-	-	-	0.0%
YTD:	-	0.0%	-	0.0%	-	0.0%	-	0.0%	-	0.0%	-	-	-	-	-	0.0%
Condominium	-	0.0%	-	0.0%	-	0.0%	-	0.0%	-	0.0%	-	-	-	-	-	0.0%
YTD:	-	0.0%	-	0.0%	-	0.0%	-	0.0%	-	0.0%	-	-	-	-	-	0.0%
<u>Existing Home</u>																
Residential (SF/COND/TH)	2	-66.7%	\$563,000	-68.2%	\$281,500	-4.5%	\$281,500	3.3%	\$152	21.6%	193	1	7	1	2.4	93.8%
YTD:	24	-20.0%	\$5,366,400	-21.7%	\$223,600	-2.2%	\$216,500	-7.9%	\$120	-1.0%	61	42	9	25		94.8%
Single Family	2	-66.7%	\$563,000	-68.2%	\$281,500	-4.5%	\$281,500	3.3%	\$152	21.6%	193	1	7	1	2.4	93.8%
YTD:	24	-20.0%	\$5,366,400	-21.7%	\$223,600	-2.2%	\$216,500	-7.9%	\$120	-1.0%	61	42	9	25		94.8%
Townhouse	-	0.0%	-	0.0%	-	0.0%	-	0.0%	-	0.0%	-	-	-	-	-	0.0%
YTD:	-	0.0%	-	0.0%	-	0.0%	-	0.0%	-	0.0%	-	-	-	-	-	0.0%
Condominium	-	0.0%	-	0.0%	-	0.0%	-	0.0%	-	0.0%	-	-	-	-	-	0.0%
YTD:	-	0.0%	-	0.0%	-	0.0%	-	0.0%	-	0.0%	-	-	-	-	-	0.0%
<u>New Construction</u>																
Residential (SF/COND/TH)	-	-100.0%	-	-100.0%	-	-100.0%	-	-100.0%	-	-100.0%	-	-	2	-	12.0	0.0%
YTD:	2	-33.3%	\$674,000	-9.7%	\$337,000	35.5%	\$337,000	34.3%	\$162	6.5%	38	5	2	2		96.4%
Single Family	-	-100.0%	-	-100.0%	-	-100.0%	-	-100.0%	-	-100.0%	-	-	2	-	12.0	0.0%
YTD:	2	-33.3%	\$674,000	-9.7%	\$337,000	35.5%	\$337,000	34.3%	\$162	6.5%	38	5	2	2		96.4%
Townhouse	-	0.0%	-	0.0%	-	0.0%	-	0.0%	-	0.0%	-	-	-	-	-	0.0%
YTD:	-	0.0%	-	0.0%	-	0.0%	-	0.0%	-	0.0%	-	-	-	-	-	0.0%
Condominium	-	0.0%	-	0.0%	-	0.0%	-	0.0%	-	0.0%	-	-	-	-	-	0.0%
YTD:	-	0.0%	-	0.0%	-	0.0%	-	0.0%	-	0.0%	-	-	-	-	-	0.0%

\* Local Market Area Code: 925; Type: Census Place Group  
\*\* Closed Sale counts for most recent 3 months are Preliminary.



Market Analysis By Local Market Area\*: Slaton

Property Type	Closed Sales**	YoY%	Dollar Volume	YoY%	Average Price	YoY%	Median Price	YoY%	Price/ Sqft	YoY%	DOM	New Listings	Active Listings	Pending Sales	Months Inventory	Close To OLP
<u>All(New and Existing)</u>																
Residential (SF/COND/TH)	1	-66.7%	\$190,000	-70.6%	\$190,000	-11.8%	\$190,000	-13.2%	\$122	19.3%	9	4	26	4	9.8	100.0%
YTD:	19	-42.4%	\$2,582,800	-53.8%	\$135,937	-19.7%	\$130,000	-18.8%	\$80	-12.6%	58	56	23	25		92.7%
Single Family	1	-66.7%	\$190,000	-70.6%	\$190,000	-11.8%	\$190,000	-13.2%	\$122	19.3%	9	4	26	4	9.8	100.0%
YTD:	19	-42.4%	\$2,582,800	-53.8%	\$135,937	-19.7%	\$130,000	-18.8%	\$80	-12.6%	58	56	23	25		92.7%
Townhouse	-	0.0%	-	0.0%	-	0.0%	-	0.0%	-	0.0%	-	-	-	-	-	0.0%
YTD:	-	0.0%	-	0.0%	-	0.0%	-	0.0%	-	0.0%	-	-	-	-	-	0.0%
Condominium	-	0.0%	-	0.0%	-	0.0%	-	0.0%	-	0.0%	-	-	-	-	-	0.0%
YTD:	-	0.0%	-	0.0%	-	0.0%	-	0.0%	-	0.0%	-	-	-	-	-	0.0%
<u>Existing Home</u>																
Residential (SF/COND/TH)	1	-66.7%	\$190,000	-70.6%	\$190,000	-11.8%	\$190,000	-13.2%	\$122	19.3%	9	4	26	4	10.1	100.0%
YTD:	19	-42.4%	\$2,582,800	-53.8%	\$135,937	-19.7%	\$130,000	-18.8%	\$80	-12.6%	58	56	23	25		92.7%
Single Family	1	-66.7%	\$190,000	-70.6%	\$190,000	-11.8%	\$190,000	-13.2%	\$122	19.3%	9	4	26	4	10.1	100.0%
YTD:	19	-42.4%	\$2,582,800	-53.8%	\$135,937	-19.7%	\$130,000	-18.8%	\$80	-12.6%	58	56	23	25		92.7%
Townhouse	-	0.0%	-	0.0%	-	0.0%	-	0.0%	-	0.0%	-	-	-	-	-	0.0%
YTD:	-	0.0%	-	0.0%	-	0.0%	-	0.0%	-	0.0%	-	-	-	-	-	0.0%
Condominium	-	0.0%	-	0.0%	-	0.0%	-	0.0%	-	0.0%	-	-	-	-	-	0.0%
YTD:	-	0.0%	-	0.0%	-	0.0%	-	0.0%	-	0.0%	-	-	-	-	-	0.0%
<u>New Construction</u>																
Residential (SF/COND/TH)	-	0.0%	-	0.0%	-	0.0%	-	0.0%	-	0.0%	-	-	-	-	-	0.0%
YTD:	-	0.0%	-	0.0%	-	0.0%	-	0.0%	-	0.0%	-	-	-	-	-	0.0%
Single Family	-	0.0%	-	0.0%	-	0.0%	-	0.0%	-	0.0%	-	-	-	-	-	0.0%
YTD:	-	0.0%	-	0.0%	-	0.0%	-	0.0%	-	0.0%	-	-	-	-	-	0.0%
Townhouse	-	0.0%	-	0.0%	-	0.0%	-	0.0%	-	0.0%	-	-	-	-	-	0.0%
YTD:	-	0.0%	-	0.0%	-	0.0%	-	0.0%	-	0.0%	-	-	-	-	-	0.0%
Condominium	-	0.0%	-	0.0%	-	0.0%	-	0.0%	-	0.0%	-	-	-	-	-	0.0%
YTD:	-	0.0%	-	0.0%	-	0.0%	-	0.0%	-	0.0%	-	-	-	-	-	0.0%

\* Local Market Area Code: 935; Type: Census Place Group  
\*\* Closed Sale counts for most recent 3 months are Preliminary.

Market Analysis By Local Market Area\*: Smyer

Property Type	Closed Sales**	YoY%	Dollar Volume	YoY%	Average Price	YoY%	Median Price	YoY%	Price/ Sqft	YoY%	DOM	New Listings	Active Listings	Pending Sales	Months Inventory	Close To OLP
<u>All(New and Existing)</u>																
Residential (SF/COND/TH)	-	-100.0%	-	-100.0%	-	-100.0%	-	-100.0%	-	-100.0%	-	-	2	-	-	0.0%
YTD:	-	-100.0%	-	-100.0%	-	-100.0%	-	-100.0%	-	-100.0%	-	4	1	1		0.0%
Single Family	-	-100.0%	-	-100.0%	-	-100.0%	-	-100.0%	-	-100.0%	-	-	2	-	-	0.0%
YTD:	-	-100.0%	-	-100.0%	-	-100.0%	-	-100.0%	-	-100.0%	-	4	1	1		0.0%
Townhouse	-	0.0%	-	0.0%	-	0.0%	-	0.0%	-	0.0%	-	-	-	-	-	0.0%
YTD:	-	0.0%	-	0.0%	-	0.0%	-	0.0%	-	0.0%	-	-	-	-		0.0%
Condominium	-	0.0%	-	0.0%	-	0.0%	-	0.0%	-	0.0%	-	-	-	-	-	0.0%
YTD:	-	0.0%	-	0.0%	-	0.0%	-	0.0%	-	0.0%	-	-	-	-		0.0%
<u>Existing Home</u>																
Residential (SF/COND/TH)	-	-100.0%	-	-100.0%	-	-100.0%	-	-100.0%	-	-100.0%	-	-	2	-	-	0.0%
YTD:	-	-100.0%	-	-100.0%	-	-100.0%	-	-100.0%	-	-100.0%	-	4	1	1		0.0%
Single Family	-	-100.0%	-	-100.0%	-	-100.0%	-	-100.0%	-	-100.0%	-	-	2	-	-	0.0%
YTD:	-	-100.0%	-	-100.0%	-	-100.0%	-	-100.0%	-	-100.0%	-	4	1	1		0.0%
Townhouse	-	0.0%	-	0.0%	-	0.0%	-	0.0%	-	0.0%	-	-	-	-	-	0.0%
YTD:	-	0.0%	-	0.0%	-	0.0%	-	0.0%	-	0.0%	-	-	-	-		0.0%
Condominium	-	0.0%	-	0.0%	-	0.0%	-	0.0%	-	0.0%	-	-	-	-	-	0.0%
YTD:	-	0.0%	-	0.0%	-	0.0%	-	0.0%	-	0.0%	-	-	-	-		0.0%
<u>New Construction</u>																
Residential (SF/COND/TH)	-	0.0%	-	0.0%	-	0.0%	-	0.0%	-	0.0%	-	-	-	-	-	0.0%
YTD:	-	0.0%	-	0.0%	-	0.0%	-	0.0%	-	0.0%	-	-	-	-		0.0%
Single Family	-	0.0%	-	0.0%	-	0.0%	-	0.0%	-	0.0%	-	-	-	-	-	0.0%
YTD:	-	0.0%	-	0.0%	-	0.0%	-	0.0%	-	0.0%	-	-	-	-		0.0%
Townhouse	-	0.0%	-	0.0%	-	0.0%	-	0.0%	-	0.0%	-	-	-	-	-	0.0%
YTD:	-	0.0%	-	0.0%	-	0.0%	-	0.0%	-	0.0%	-	-	-	-		0.0%
Condominium	-	0.0%	-	0.0%	-	0.0%	-	0.0%	-	0.0%	-	-	-	-	-	0.0%
YTD:	-	0.0%	-	0.0%	-	0.0%	-	0.0%	-	0.0%	-	-	-	-		0.0%

\* Local Market Area Code: 491; Type: Census Place Group  
\*\* Closed Sale counts for most recent 3 months are Preliminary.

Market Analysis By Local Market Area\*: Sundown

Property Type	Closed Sales**		YoY%	Dollar Volume	YoY%	Average Price	YoY%	Median Price	YoY%	Price/ Sqft	YoY%	DOM	New Listings	Active Listings	Pending Sales	Months Inventory	Close To OLP
<u>All(New and Existing)</u>																	
Residential (SF/COND/TH)	1	100.0%		\$97,500	100.0%	\$97,500	100.0%	\$97,500	100.0%	\$75	100.0%	8	-	4	1	6.0	84.8%
YTD:	4	0.0%		\$873,400	108.7%	\$218,350	108.7%	\$190,450	112.8%	\$95	53.6%	17	8	2	4		92.2%
Single Family	1	100.0%		\$97,500	100.0%	\$97,500	100.0%	\$97,500	100.0%	\$75	100.0%	8	-	4	1	6.0	84.8%
YTD:	4	0.0%		\$873,400	108.7%	\$218,350	108.7%	\$190,450	112.8%	\$95	53.6%	17	8	2	4		92.2%
Townhouse	-	0.0%		-	0.0%	-	0.0%	-	0.0%	-	0.0%	-	-	-	-	-	0.0%
YTD:	-	0.0%		-	0.0%	-	0.0%	-	0.0%	-	0.0%	-	-	-	-	-	0.0%
Condominium	-	0.0%		-	0.0%	-	0.0%	-	0.0%	-	0.0%	-	-	-	-	-	0.0%
YTD:	-	0.0%		-	0.0%	-	0.0%	-	0.0%	-	0.0%	-	-	-	-	-	0.0%
<u>Existing Home</u>																	
Residential (SF/COND/TH)	1	100.0%		\$97,500	100.0%	\$97,500	100.0%	\$97,500	100.0%	\$75	100.0%	8	-	4	1	6.0	84.8%
YTD:	4	0.0%		\$873,400	108.7%	\$218,350	108.7%	\$190,450	112.8%	\$95	53.6%	17	8	2	4		92.2%
Single Family	1	100.0%		\$97,500	100.0%	\$97,500	100.0%	\$97,500	100.0%	\$75	100.0%	8	-	4	1	6.0	84.8%
YTD:	4	0.0%		\$873,400	108.7%	\$218,350	108.7%	\$190,450	112.8%	\$95	53.6%	17	8	2	4		92.2%
Townhouse	-	0.0%		-	0.0%	-	0.0%	-	0.0%	-	0.0%	-	-	-	-	-	0.0%
YTD:	-	0.0%		-	0.0%	-	0.0%	-	0.0%	-	0.0%	-	-	-	-	-	0.0%
Condominium	-	0.0%		-	0.0%	-	0.0%	-	0.0%	-	0.0%	-	-	-	-	-	0.0%
YTD:	-	0.0%		-	0.0%	-	0.0%	-	0.0%	-	0.0%	-	-	-	-	-	0.0%
<u>New Construction</u>																	
Residential (SF/COND/TH)	-	0.0%		-	0.0%	-	0.0%	-	0.0%	-	0.0%	-	-	-	-	-	0.0%
YTD:	-	0.0%		-	0.0%	-	0.0%	-	0.0%	-	0.0%	-	-	-	-	-	0.0%
Single Family	-	0.0%		-	0.0%	-	0.0%	-	0.0%	-	0.0%	-	-	-	-	-	0.0%
YTD:	-	0.0%		-	0.0%	-	0.0%	-	0.0%	-	0.0%	-	-	-	-	-	0.0%
Townhouse	-	0.0%		-	0.0%	-	0.0%	-	0.0%	-	0.0%	-	-	-	-	-	0.0%
YTD:	-	0.0%		-	0.0%	-	0.0%	-	0.0%	-	0.0%	-	-	-	-	-	0.0%
Condominium	-	0.0%		-	0.0%	-	0.0%	-	0.0%	-	0.0%	-	-	-	-	-	0.0%
YTD:	-	0.0%		-	0.0%	-	0.0%	-	0.0%	-	0.0%	-	-	-	-	-	0.0%

\* Local Market Area Code: 223; Type: Census Place Group

\*\* Closed Sale counts for most recent 3 months are Preliminary.

Market Analysis By Local Market Area\*: Wolfforth

Property Type	Closed Sales**	YoY%	Dollar Volume	YoY%	Average Price	YoY%	Median Price	YoY%	Price/ Sqft	YoY%	DOM	New Listings	Active Listings	Pending Sales	Months Inventory	Close To OLP
<u>All(New and Existing)</u>																
Residential (SF/COND/TH)	19	26.7%	\$5,855,850	5.1%	\$308,203	-17.0%	\$272,500	-22.8%	\$149	-11.2%	30	28	59	11	5.2	97.6%
YTD:	105	-0.9%	\$34,048,199	-1.8%	\$324,269	-0.8%	\$315,000	-1.7%	\$155	-0.3%	50	220	53	110		98.3%
Single Family	19	26.7%	\$5,855,850	5.1%	\$308,203	-17.0%	\$272,500	-22.8%	\$149	-11.2%	30	28	59	11	5.6	97.6%
YTD:	99	-5.7%	\$32,934,199	-4.5%	\$332,669	1.3%	\$349,900	9.0%	\$155	-0.2%	49	215	52	105		98.2%
Townhouse	-	0.0%	-	0.0%	-	0.0%	-	0.0%	-	0.0%	-	-	-	-	-	0.0%
YTD:	6	500.0%	\$1,114,000	555.3%	\$185,667	9.2%	\$186,500	9.7%	\$151	7.0%	63	5	2	5		98.9%
Condominium	-	0.0%	-	0.0%	-	0.0%	-	0.0%	-	0.0%	-	-	-	-	-	0.0%
YTD:	-	0.0%	-	0.0%	-	0.0%	-	0.0%	-	0.0%	-	-	-	-	-	0.0%
<u>Existing Home</u>																
Residential (SF/COND/TH)	17	30.8%	\$5,104,950	7.2%	\$300,291	-18.1%	\$269,000	-22.0%	\$146	-11.7%	29	18	42	10	4.5	97.5%
YTD:	88	0.0%	\$28,139,949	-0.7%	\$319,772	-0.7%	\$291,750	-8.8%	\$151	-0.8%	45	185	44	95		97.7%
Single Family	17	30.8%	\$5,104,950	7.2%	\$300,291	-18.1%	\$269,000	-22.0%	\$146	-11.7%	29	18	42	10	4.7	97.5%
YTD:	85	-2.3%	\$27,597,949	-2.0%	\$324,682	0.3%	\$315,000	-1.6%	\$151	-0.8%	44	183	44	93		97.7%
Townhouse	-	0.0%	-	0.0%	-	0.0%	-	0.0%	-	0.0%	-	-	-	-	-	0.0%
YTD:	3	200.0%	\$542,000	218.8%	\$180,667	6.3%	\$173,000	1.8%	\$145	2.9%	54	2	2	2		96.9%
Condominium	-	0.0%	-	0.0%	-	0.0%	-	0.0%	-	0.0%	-	-	-	-	-	0.0%
YTD:	-	0.0%	-	0.0%	-	0.0%	-	0.0%	-	0.0%	-	-	-	-	-	0.0%
<u>New Construction</u>																
Residential (SF/COND/TH)	2	0.0%	\$750,900	-7.1%	\$375,450	-7.1%	\$375,450	-7.1%	\$174	-4.8%	40	10	17	1	9.3	98.7%
YTD:	17	-5.6%	\$5,908,250	-6.5%	\$347,544	-1.0%	\$353,975	3.7%	\$175	1.6%	78	35	9	15		101.1%
Single Family	2	0.0%	\$750,900	-7.1%	\$375,450	-7.1%	\$375,450	-7.1%	\$174	-4.8%	40	10	17	1	10.7	98.7%
YTD:	14	-22.2%	\$5,336,250	-15.6%	\$381,161	8.6%	\$375,450	9.9%	\$179	3.9%	79	32	8	12		101.2%
Townhouse	-	0.0%	-	0.0%	-	0.0%	-	0.0%	-	0.0%	-	-	-	-	-	0.0%
YTD:	3	100.0%	\$572,000	100.0%	\$190,667	100.0%	\$189,000	100.0%	\$156	100.0%	73	3	2	3		100.9%
Condominium	-	0.0%	-	0.0%	-	0.0%	-	0.0%	-	0.0%	-	-	-	-	-	0.0%
YTD:	-	0.0%	-	0.0%	-	0.0%	-	0.0%	-	0.0%	-	-	-	-	-	0.0%

\* Local Market Area Code: 1096; Type: Census Place Group  
\*\* Closed Sale counts for most recent 3 months are Preliminary.

