

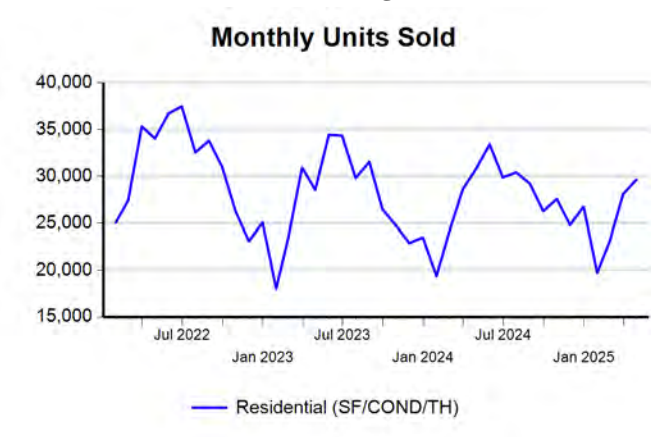
Market Analysis By State: Texas

Property Type	Closed Sales*	YoY%	Dollar Volume	YoY%	Average Price	YoY%	Median Price	YoY%	Price/ Sqft	YoY%	DOM	New Listings	Active Listings	Pending Sales	Months Inventory	Close To OLP
<u>All(New and Existing)</u>																
Residential (SF/COND/TH)	29,619	-3.8%	\$12,784,563,122	-3.4%	\$431,634	0.4%	\$339,000	-0.3%	\$194	-1.4%	64	59,827	142,763	32,424	5.2	94.8%
YTD:	100,444	-2.3%	\$42,013,909,685	-1.0%	\$418,282	1.4%	\$334,000	-0.3%	\$190	-0.5%	70	209,623	129,435	116,195		94.3%
Single Family	28,063	-3.0%	\$12,211,392,056	-2.7%	\$435,142	0.3%	\$340,000	-0.9%	\$191	-0.9%	64	55,610	130,261	30,843	5.0	94.9%
YTD:	95,037	-1.9%	\$40,052,492,242	-0.7%	\$421,441	1.3%	\$335,000	-0.3%	\$188	-0.3%	70	194,173	118,456	110,288		94.3%
Townhouse	712	-13.2%	\$265,645,701	-12.8%	\$373,098	0.4%	\$325,500	-4.3%	\$197	-2.0%	59	1,704	4,230	723	6.3	95.0%
YTD:	2,473	-8.9%	\$910,544,443	-6.5%	\$368,194	2.5%	\$329,995	0.3%	\$196	0.1%	65	6,237	3,779	2,757		94.8%
Condominium	820	-20.9%	\$299,282,666	-21.6%	\$364,979	-0.9%	\$258,000	-4.4%	\$261	-6.2%	72	2,513	8,272	858	10.3	93.5%
YTD:	2,893	-9.6%	\$1,036,537,953	-7.1%	\$358,292	2.7%	\$250,000	-3.9%	\$258	-3.6%	82	9,213	7,199	3,150		92.6%
<u>Existing Home</u>																
Residential (SF/COND/TH)	22,336	-3.5%	\$9,744,043,753	-2.1%	\$436,248	1.4%	\$332,500	-0.7%	\$195	-0.9%	59	47,167	110,011	23,283	5.5	95.0%
YTD:	73,042	-2.7%	\$30,780,422,584	-0.1%	\$421,407	2.7%	\$325,000	0.0%	\$192	0.1%	66	162,396	97,125	82,893		94.3%
Single Family	20,945	-2.8%	\$9,244,434,724	-1.4%	\$441,367	1.4%	\$335,000	-0.3%	\$193	-0.3%	58	43,413	99,095	21,892	5.3	95.0%
YTD:	68,288	-2.4%	\$29,119,102,596	0.1%	\$426,416	2.6%	\$330,000	0.8%	\$189	0.4%	65	148,733	87,678	77,749		94.4%
Townhouse	583	-6.3%	\$215,595,609	-5.1%	\$369,804	1.2%	\$310,000	-4.3%	\$194	-0.6%	56	1,419	3,299	571	6.3	94.8%
YTD:	1,956	-3.8%	\$698,046,578	-1.3%	\$356,875	2.6%	\$310,000	0.7%	\$191	0.4%	60	4,987	2,856	2,162		94.8%
Condominium	784	-20.2%	\$276,112,029	-21.5%	\$352,184	-1.7%	\$249,500	-3.9%	\$255	-7.1%	69	2,335	7,617	820	10.1	93.3%
YTD:	2,756	-8.9%	\$949,388,690	-7.2%	\$344,481	1.9%	\$245,000	-2.0%	\$254	-3.7%	80	8,676	6,590	2,982		92.6%
<u>New Construction</u>																
Residential (SF/COND/TH)	7,277	-4.8%	\$3,037,407,217	-7.3%	\$417,398	-2.6%	\$349,900	-1.4%	\$188	-3.0%	81	12,660	32,752	9,141	4.4	94.4%
YTD:	27,382	-1.4%	\$11,225,251,691	-3.3%	\$409,950	-1.9%	\$345,000	-1.8%	\$186	-2.2%	82	47,227	32,309	33,302		94.4%
Single Family	7,117	-3.7%	\$2,965,854,219	-6.4%	\$416,728	-2.8%	\$349,000	-1.7%	\$187	-2.9%	81	12,197	31,166	8,951	4.3	94.4%
YTD:	26,739	-0.7%	\$10,929,319,783	-2.8%	\$408,741	-2.2%	\$344,990	-1.4%	\$184	-2.2%	82	45,440	30,777	32,539		94.3%
Townhouse	124	-37.4%	\$48,172,560	-37.8%	\$388,488	-0.7%	\$355,509	-4.9%	\$209	-3.9%	75	285	931	152	6.0	95.5%
YTD:	511	-24.7%	\$210,292,249	-21.2%	\$411,531	4.8%	\$371,456	0.5%	\$215	1.1%	86	1,250	923	595		95.0%
Condominium	34	-37.0%	\$22,481,003	-24.4%	\$661,206	20.1%	\$490,000	8.3%	\$394	14.2%	121	178	655	38	14.0	97.1%
YTD:	133	-23.1%	\$85,684,394	-7.9%	\$644,244	19.8%	\$414,445	-12.5%	\$332	0.9%	118	537	609	168		93.1%

* Closed Sale counts for most recent 3 months are Preliminary.

Trend Analysis By State: Texas

Residential, All (New and Existing)



Single Family, New vs. Existing



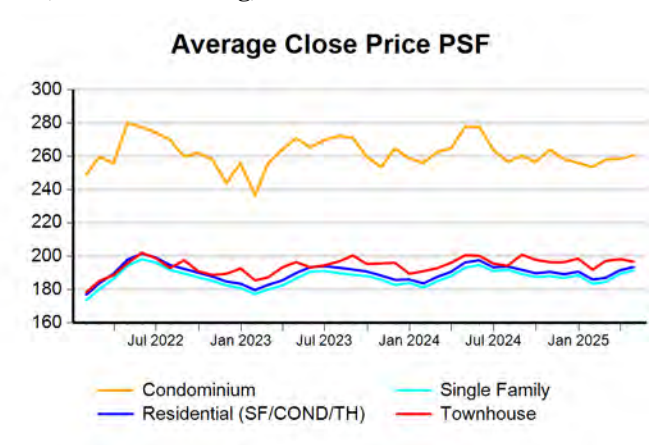
COND/TH, All (New and Existing)



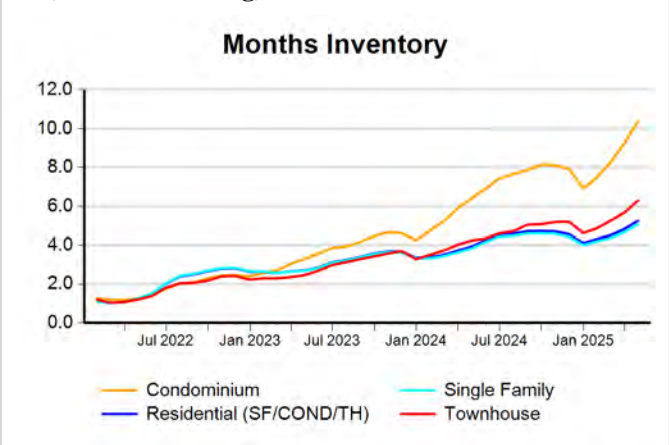
All (New and Existing) Construction



All (New and Existing) Construction



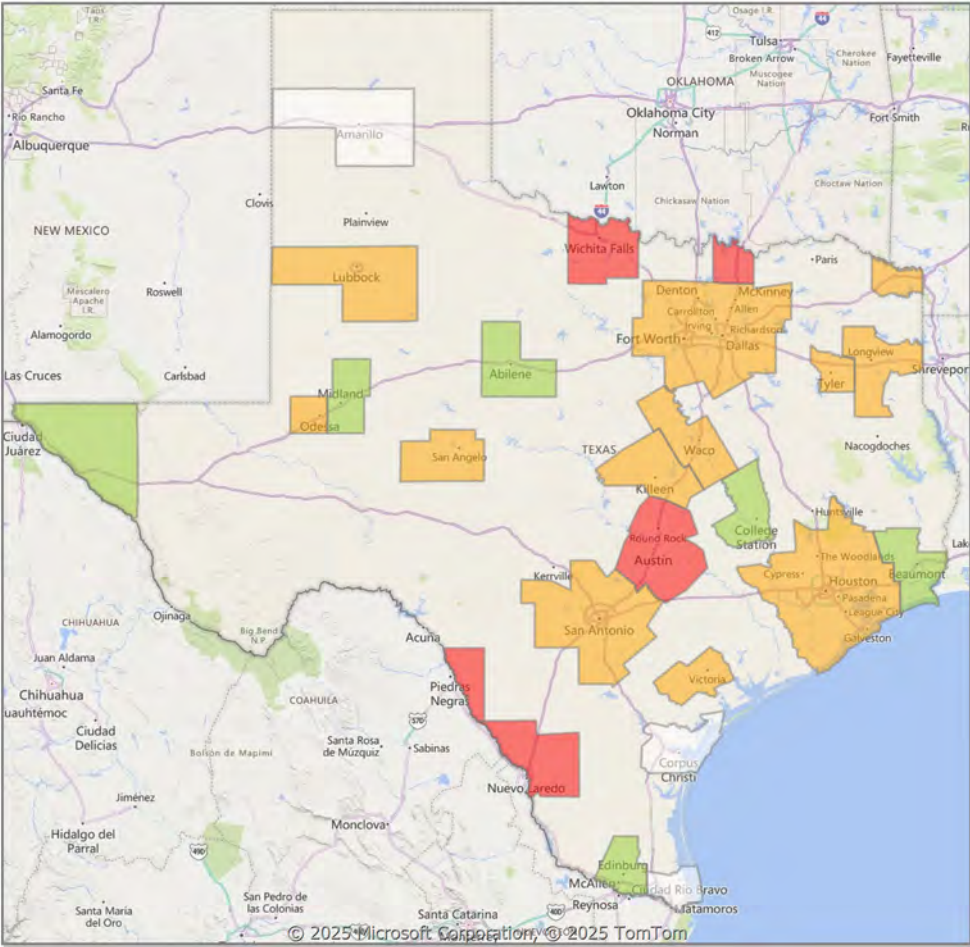
All (New and Existing) Construction



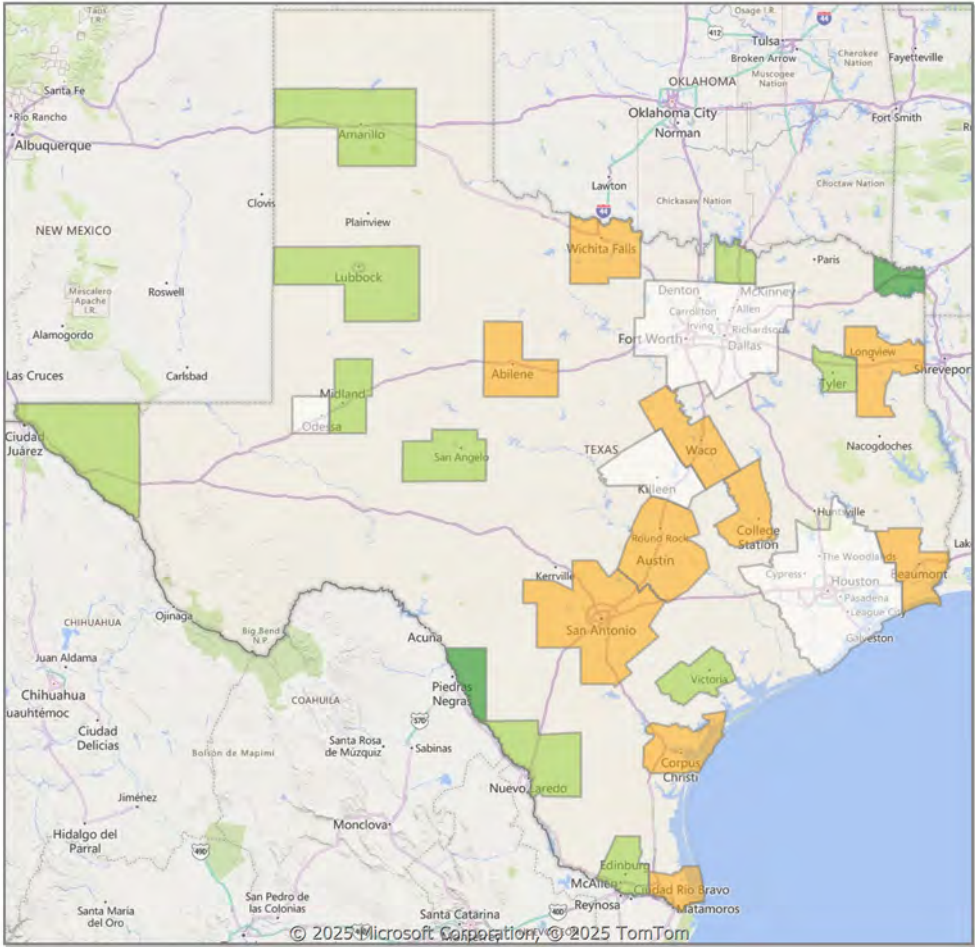
* Closed Sale counts for most recent 3 months are Preliminary.

Comparison By Metropolitan Statistical Area in Texas

Residential* Closed Sales
YoY Percentage Change



Residential* Avg Close Price Per SqFt
YoY Percentage Change

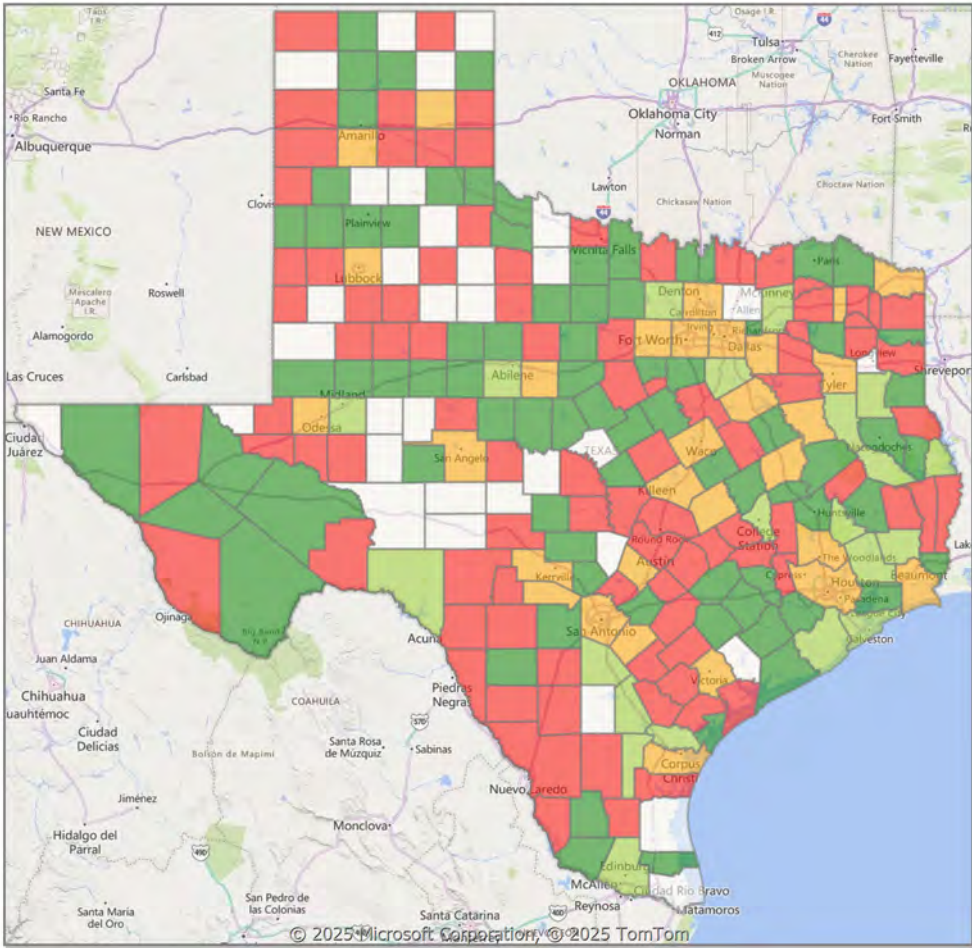


* Residential includes Single Family, Condominium and Townhouse.

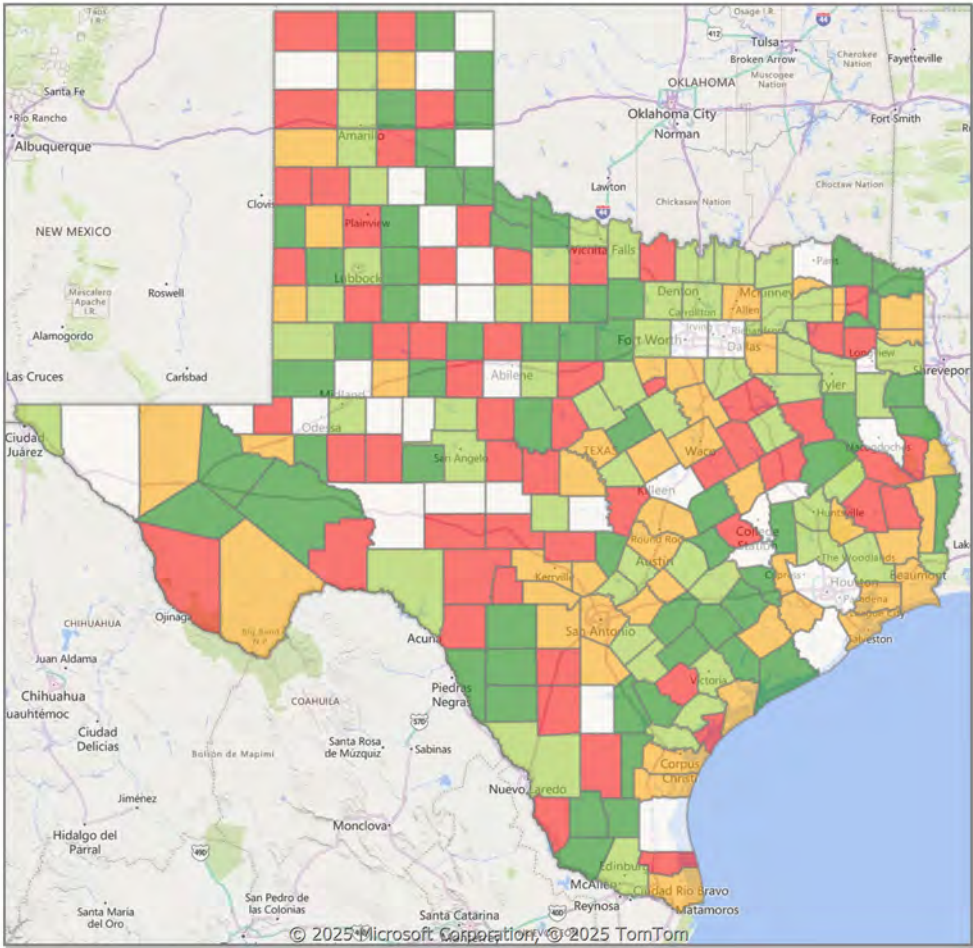


Comparison By County in Texas

Residential* Closed Sales
YoY Percentage Change



Residential* Avg Close Price Per SqFt
YoY Percentage Change



* Residential includes Single Family, Condominium and Townhouse.



Market Analysis By Metropolitan Statistical Area: Lubbock

Property Type	Closed Sales*	YoY%	Dollar Volume	YoY%	Average Price	YoY%	Median Price	YoY%	Price/ Sqft	YoY%	DOM	New Listings	Active Listings	Pending Sales	Months Inventory	Close To OLP
<u>All(New and Existing)</u>																
Residential (SF/COND/TH)	444	-9.9%	\$130,130,039	-1.8%	\$293,086	9.0%	\$243,788	6.0%	\$139	4.3%	51	932	1,642	540	3.9	96.0%
YTD:	1,563	-1.0%	\$443,673,459	2.4%	\$283,860	3.3%	\$237,000	3.0%	\$138	2.8%	59	3,246	1,500	1,927		95.3%
Single Family	434	-8.8%	\$128,160,420	2.0%	\$295,301	11.9%	\$245,500	5.9%	\$139	4.8%	51	894	1,581	529	3.9	96.0%
YTD:	1,532	0.1%	\$437,661,158	4.0%	\$285,680	3.9%	\$238,873	2.4%	\$138	3.1%	59	3,167	1,449	1,891		95.4%
Townhouse	8	-33.3%	\$1,602,400	-34.7%	\$200,300	-2.1%	\$176,500	-12.2%	\$124	-11.8%	47	30	50	9	6.2	97.9%
YTD:	23	-37.8%	\$4,557,525	-38.1%	\$198,153	-0.4%	\$180,000	-5.3%	\$125	-8.6%	72	62	42	28		94.4%
Condominium	1	-80.0%	\$114,000	-97.4%	\$114,000	-87.2%	\$114,000	-89.6%	\$120	-22.1%	64	8	11	2	6.3	95.8%
YTD:	6	-40.0%	\$938,000	-81.9%	\$156,333	-69.8%	\$117,000	-47.3%	\$129	-11.0%	86	17	8	8		92.9%

* Closed Sale counts for most recent 3 months are Preliminary.

<u>Existing Home</u>																
Residential (SF/COND/TH)	357	-3.3%	\$103,208,752	6.5%	\$289,100	10.1%	\$230,000	4.8%	\$133	6.3%	52	785	1,379	425	4.3	95.7%
YTD:	1,155	0.0%	\$316,536,439	3.9%	\$274,058	3.9%	\$225,000	2.7%	\$130	3.3%	60	2,646	1,245	1,444		94.9%
Single Family	349	-3.1%	\$101,701,892	11.0%	\$291,409	14.5%	\$230,750	5.5%	\$134	6.9%	52	748	1,328	414	4.3	95.6%
YTD:	1,128	-0.4%	\$311,435,546	4.8%	\$276,095	5.3%	\$227,000	3.7%	\$130	3.6%	60	2,573	1,204	1,412		95.0%
Townhouse	7	75.0%	\$1,427,500	77.2%	\$203,929	1.3%	\$178,000	14.7%	\$125	-7.6%	47	29	40	9	7.4	97.6%
YTD:	21	75.0%	\$4,207,725	66.7%	\$200,368	-4.8%	\$190,000	0.0%	\$125	-4.7%	72	56	33	24		93.8%
Condominium	1	-80.0%	\$114,000	-97.4%	\$114,000	-87.2%	\$114,000	-89.6%	\$120	-22.1%	64	8	11	2	6.3	95.8%
YTD:	6	-40.0%	\$938,000	-81.9%	\$156,333	-69.8%	\$117,000	-47.3%	\$129	-11.0%	86	17	8	8		92.9%

* Closed Sale counts for most recent 3 months are Preliminary.

<u>New Construction</u>																
Residential (SF/COND/TH)	87	-29.8%	\$26,927,193	-24.4%	\$309,508	7.7%	\$265,000	7.7%	\$162	3.2%	48	147	263	115	2.6	97.3%
YTD:	407	-3.8%	\$126,831,864	-1.5%	\$311,626	2.4%	\$252,254	-1.1%	\$161	2.2%	56	600	254	483		96.5%
Single Family	86	-25.9%	\$26,758,859	-21.3%	\$311,150	6.2%	\$265,000	6.9%	\$162	3.0%	48	146	253	115	2.6	97.3%
YTD:	405	1.8%	\$126,486,873	2.1%	\$312,313	0.3%	\$252,650	-3.8%	\$162	1.5%	56	594	245	479		96.5%
Townhouse	1	-87.5%	\$174,900	-89.4%	\$174,900	-15.2%	\$174,900	-16.5%	\$122	-15.0%	54	1	10	0	3.8	100.0%
YTD:	2	-92.0%	\$349,800	-92.8%	\$174,900	-9.5%	\$174,900	-8.0%	\$122	-12.1%	81	6	9	4		100.0%
Condominium	-	0.0%	-	0.0%	-	0.0%	-	0.0%	-	0.0%	-	-	0	0	-	0.0%
YTD:	-	0.0%	-	0.0%	-	0.0%	-	0.0%	-	0.0%	-	0	0	0		0.0%

* Closed Sale counts for most recent 3 months are Preliminary.

Trend Analysis By Metropolitan Statistical Area: Lubbock

Residential, All (New and Existing)



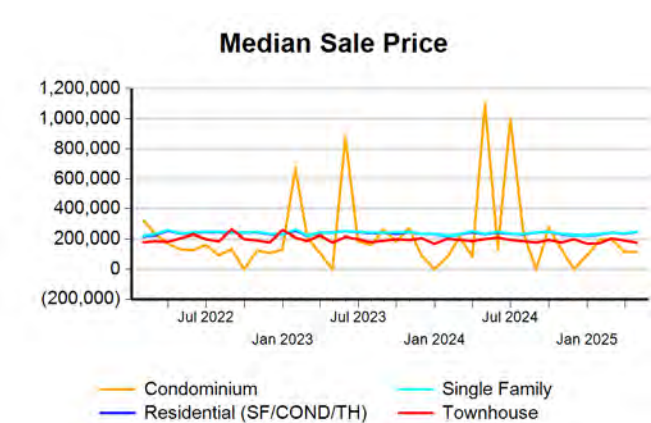
Single Family, New vs. Existing



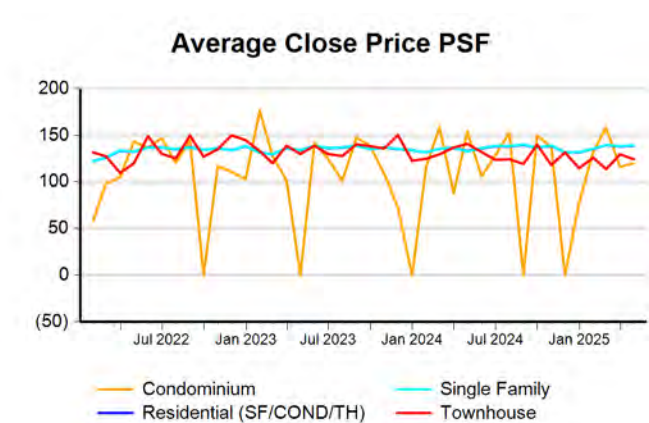
COND/TH, All (New and Existing)



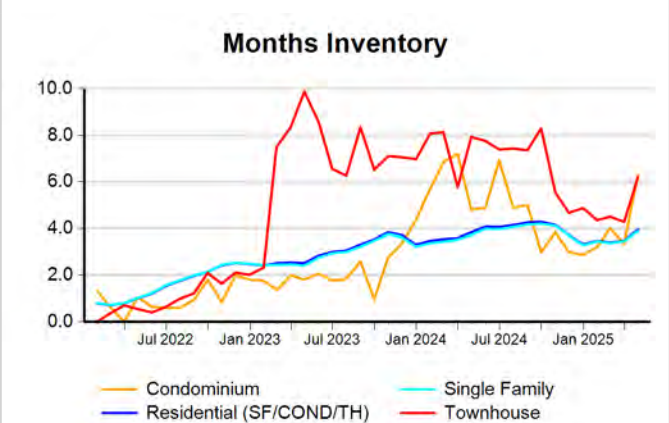
All (New and Existing) Construction



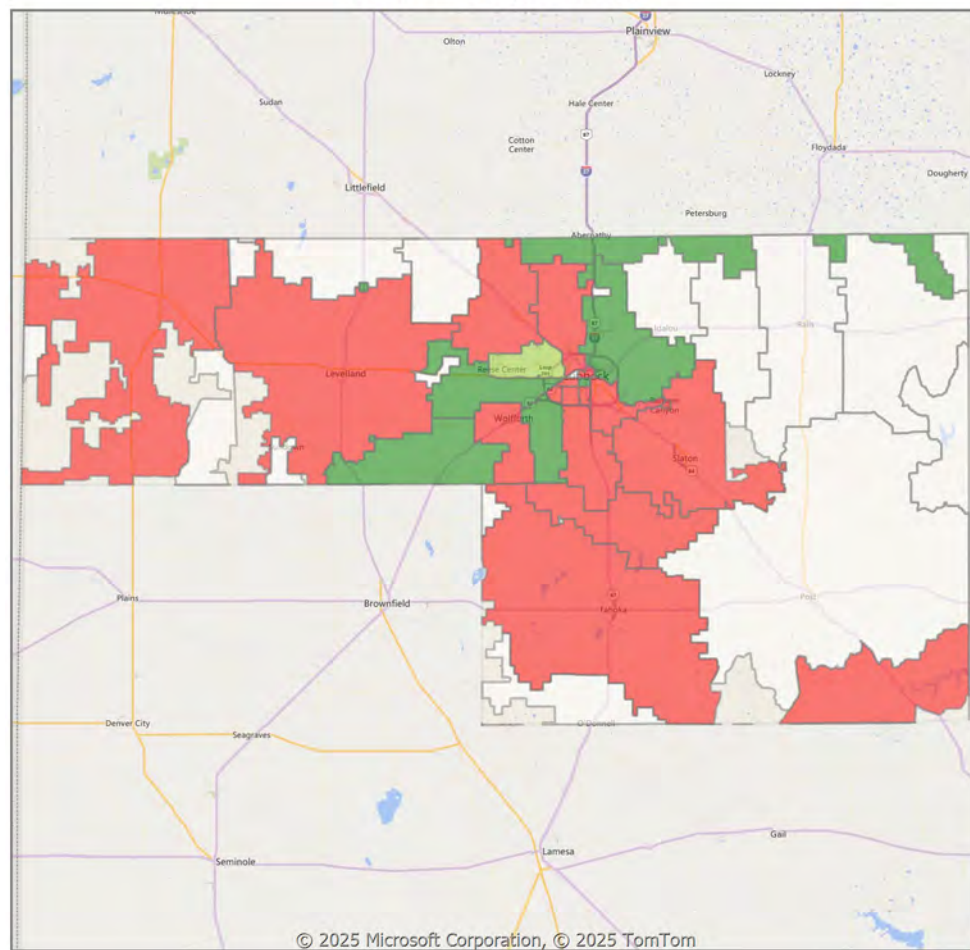
All (New and Existing) Construction



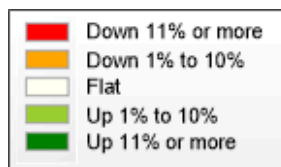
All (New and Existing) Construction



* Closed Sale counts for most recent 3 months are Preliminary.

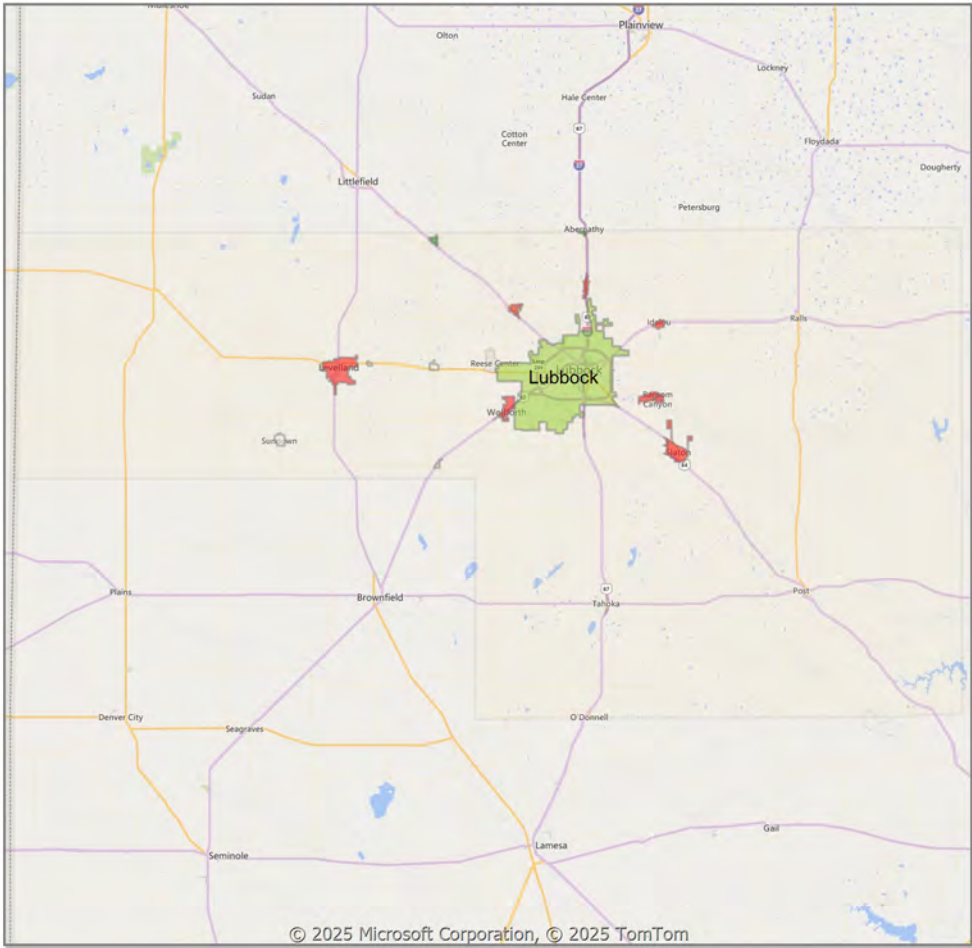
Residential Closed Sales
YoY Percentage Change**

** Residential includes Single Family, Condominium and Townhouse.

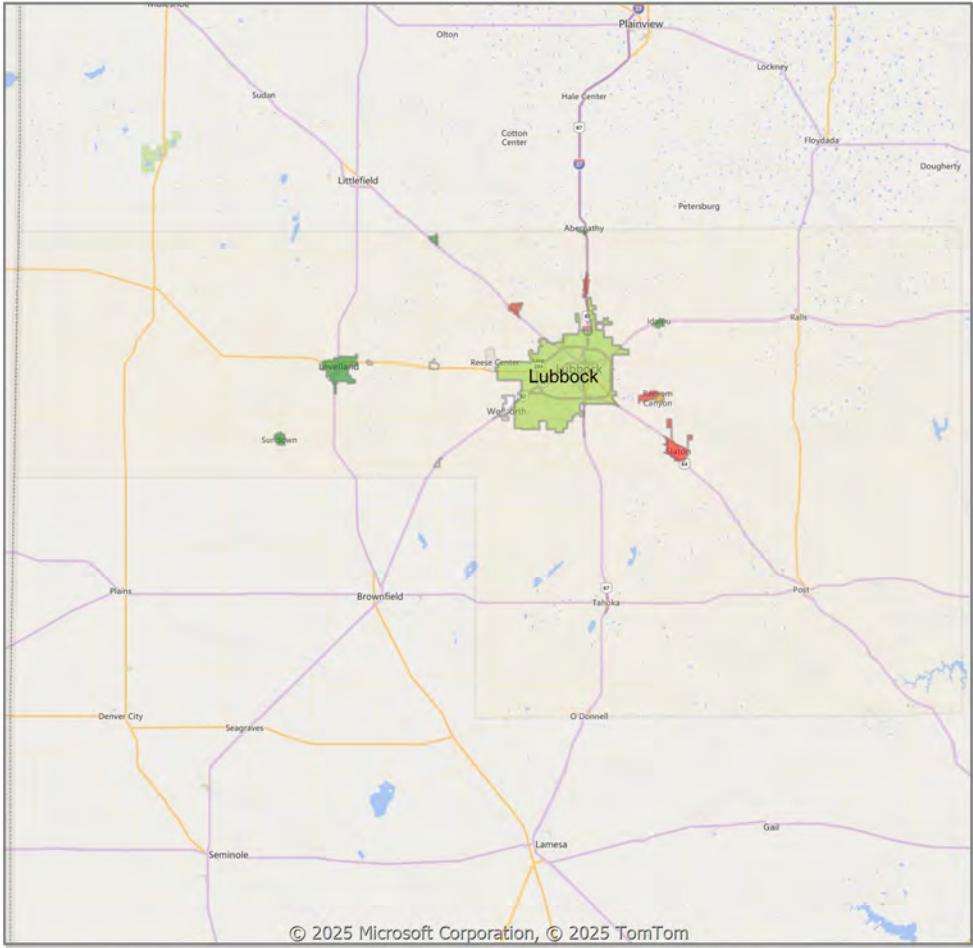


Comparison By Local Market Area* in Lubbock MSA

Residential** Closed Sales
YoY Percentage Change



Residential** Avg Close Price Per SqFt
YoY Percentage Change



* Census Place Group
** Residential includes Single Family, Condominium and Townhouse.



Market Analysis By County: Hockley County

Property Type	Closed Sales*	YoY%	Dollar Volume	YoY%	Average Price	YoY%	Median Price	YoY%	Price/ Sqft	YoY%	DOM	New Listings	Active Listings	Pending Sales	Months Inventory	Close To OLP
<u>All(New and Existing)</u>																
Residential (SF/COND/TH)	11	-64.5%	\$2,479,500	-63.1%	\$225,409	4.0%	\$173,000	-21.0%	\$124	17.7%	63	21	65	17	3.0	97.5%
YTD:	58	-39.6%	\$13,713,783	-33.3%	\$236,445	10.4%	\$220,250	10.6%	\$118	7.2%	107	111	63	69		94.7%
Single Family	11	-64.5%	\$2,479,500	-63.1%	\$225,409	4.0%	\$173,000	-21.0%	\$124	17.7%	63	21	65	17	3.0	97.5%
YTD:	58	-39.6%	\$13,713,783	-33.3%	\$236,445	10.4%	\$220,250	10.6%	\$118	7.2%	107	111	63	69		94.7%
Townhouse	-	0.0%	-	0.0%	-	0.0%	-	0.0%	-	0.0%	-	-	-	-	-	0.0%
YTD:	-	0.0%	-	0.0%	-	0.0%	-	0.0%	-	0.0%	-	-	-	-	-	0.0%
Condominium	-	0.0%	-	0.0%	-	0.0%	-	0.0%	-	0.0%	-	-	-	-	-	0.0%
YTD:	-	0.0%	-	0.0%	-	0.0%	-	0.0%	-	0.0%	-	-	-	-	-	0.0%
<u>Existing Home</u>																
Residential (SF/COND/TH)	10	-58.3%	\$2,334,500	-55.0%	\$233,450	8.1%	\$204,000	-1.6%	\$124	30.2%	67	21	57	16	4.2	96.9%
YTD:	47	-34.7%	\$10,522,000	-28.7%	\$223,872	9.3%	\$219,500	18.7%	\$109	10.4%	107	95	54	58		95.0%
Single Family	10	-58.3%	\$2,334,500	-55.0%	\$233,450	8.1%	\$204,000	-1.6%	\$124	30.2%	67	21	57	16	4.2	96.9%
YTD:	47	-34.7%	\$10,522,000	-28.7%	\$223,872	9.3%	\$219,500	18.7%	\$109	10.4%	107	95	54	58		95.0%
Townhouse	-	0.0%	-	0.0%	-	0.0%	-	0.0%	-	0.0%	-	-	-	-	-	0.0%
YTD:	-	0.0%	-	0.0%	-	0.0%	-	0.0%	-	0.0%	-	-	-	-	-	0.0%
Condominium	-	0.0%	-	0.0%	-	0.0%	-	0.0%	-	0.0%	-	-	-	-	-	0.0%
YTD:	-	0.0%	-	0.0%	-	0.0%	-	0.0%	-	0.0%	-	-	-	-	-	0.0%
<u>New Construction</u>																
Residential (SF/COND/TH)	1	-85.7%	\$145,000	-90.6%	\$145,000	-33.9%	\$145,000	-33.8%	\$122	-12.5%	23	-	8	1	1.0	103.6%
YTD:	11	-54.2%	\$3,191,783	-45.1%	\$290,162	19.7%	\$221,000	-2.4%	\$157	7.0%	109	16	9	11		93.5%
Single Family	1	-85.7%	\$145,000	-90.6%	\$145,000	-33.9%	\$145,000	-33.8%	\$122	-12.5%	23	-	8	1	1.0	103.6%
YTD:	11	-54.2%	\$3,191,783	-45.1%	\$290,162	19.7%	\$221,000	-2.4%	\$157	7.0%	109	16	9	11		93.5%
Townhouse	-	0.0%	-	0.0%	-	0.0%	-	0.0%	-	0.0%	-	-	-	-	-	0.0%
YTD:	-	0.0%	-	0.0%	-	0.0%	-	0.0%	-	0.0%	-	-	-	-	-	0.0%
Condominium	-	0.0%	-	0.0%	-	0.0%	-	0.0%	-	0.0%	-	-	-	-	-	0.0%
YTD:	-	0.0%	-	0.0%	-	0.0%	-	0.0%	-	0.0%	-	-	-	-	-	0.0%

* Closed Sale counts for most recent 3 months are Preliminary.

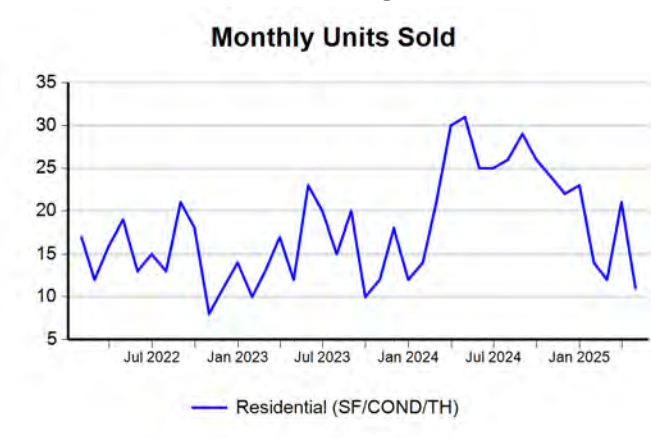
Market Analysis By County: Lubbock County

Property Type	Closed Sales*	YoY%	Dollar Volume	YoY%	Average Price	YoY%	Median Price	YoY%	Price/ Sqft	YoY%	DOM	New Listings	Active Listings	Pending Sales	Months Inventory	Close To OLP
<u>All(New and Existing)</u>																
Residential (SF/COND/TH)	429	-4.9%	\$126,773,593	3.0%	\$295,510	8.2%	\$246,463	5.6%	\$140	2.8%	51	892	1,510	513	3.9	96.0%
YTD:	1,471	2.0%	\$423,864,434	5.9%	\$288,147	3.8%	\$239,950	2.4%	\$140	2.8%	56	3,049	1,378	1,818		95.6%
Single Family	419	-3.5%	\$124,804,020	7.4%	\$297,862	11.2%	\$247,500	5.4%	\$140	3.4%	51	854	1,449	502	3.9	96.0%
YTD:	1,440	3.2%	\$417,849,344	7.7%	\$290,173	4.4%	\$240,051	1.6%	\$140	3.0%	56	2,970	1,327	1,782		95.6%
Townhouse	8	-33.3%	\$1,602,400	-34.7%	\$200,300	-2.1%	\$176,500	-12.2%	\$124	-11.8%	47	30	50	9	6.2	97.9%
YTD:	23	-37.8%	\$4,557,525	-38.1%	\$198,153	-0.4%	\$180,000	-5.3%	\$125	-8.6%	72	62	42	28		94.4%
Condominium	1	-80.0%	\$114,000	-97.4%	\$114,000	-87.2%	\$114,000	-89.6%	\$120	-22.1%	64	8	11	2	6.6	95.8%
YTD:	6	-40.0%	\$938,000	-81.9%	\$156,333	-69.8%	\$117,000	-47.3%	\$129	-11.0%	86	17	8	8		92.9%
<u>Existing Home</u>																
Residential (SF/COND/TH)	343	2.4%	\$99,987,376	11.5%	\$291,508	8.9%	\$230,000	4.6%	\$134	4.3%	52	747	1,262	399	4.3	95.7%
YTD:	1,076	2.5%	\$301,074,114	7.2%	\$279,809	4.6%	\$227,750	3.2%	\$132	3.2%	57	2,470	1,137	1,347		95.2%
Single Family	335	2.8%	\$98,482,934	16.7%	\$293,979	13.6%	\$232,750	5.8%	\$134	4.9%	52	710	1,211	388	4.2	95.7%
YTD:	1,049	2.0%	\$295,979,996	8.3%	\$282,154	6.1%	\$230,000	3.5%	\$132	3.5%	57	2,397	1,096	1,315		95.2%
Townhouse	7	75.0%	\$1,427,500	77.2%	\$203,929	1.3%	\$178,000	14.7%	\$125	-7.6%	47	29	40	9	7.4	97.6%
YTD:	21	75.0%	\$4,207,725	66.7%	\$200,368	-4.8%	\$190,000	0.0%	\$125	-4.7%	72	56	33	24		93.8%
Condominium	1	-80.0%	\$114,000	-97.4%	\$114,000	-87.2%	\$114,000	-89.6%	\$120	-22.1%	64	8	11	2	6.6	95.8%
YTD:	6	-40.0%	\$938,000	-81.9%	\$156,333	-69.8%	\$117,000	-47.3%	\$129	-11.0%	86	17	8	8		92.9%
<u>New Construction</u>																
Residential (SF/COND/TH)	86	-25.9%	\$26,790,218	-20.0%	\$311,514	7.9%	\$265,000	7.3%	\$162	3.1%	48	145	248	114	2.7	97.2%
YTD:	394	0.5%	\$122,477,697	2.6%	\$310,857	2.1%	\$252,207	-0.6%	\$161	1.9%	54	579	240	471		96.6%
Single Family	85	-21.3%	\$26,622,064	-16.4%	\$313,201	6.3%	\$265,000	6.4%	\$163	2.7%	48	144	238	114	2.6	97.2%
YTD:	392	6.8%	\$122,132,841	6.6%	\$311,563	-0.2%	\$252,300	-4.2%	\$161	1.2%	54	573	231	467		96.6%
Townhouse	1	-87.5%	\$174,900	-89.4%	\$174,900	-15.2%	\$174,900	-16.5%	\$122	-15.0%	54	1	10	-	3.8	100.0%
YTD:	2	-92.0%	\$349,800	-92.8%	\$174,900	-9.5%	\$174,900	-8.0%	\$122	-12.1%	81	6	9	4		100.0%
Condominium	-	0.0%	-	0.0%	-	0.0%	-	0.0%	-	0.0%	-	-	-	-	-	0.0%
YTD:	-	0.0%	-	0.0%	-	0.0%	-	0.0%	-	0.0%	-	-	-	-	-	0.0%

* Closed Sale counts for most recent 3 months are Preliminary.

Trend Analysis By County: Hockley County

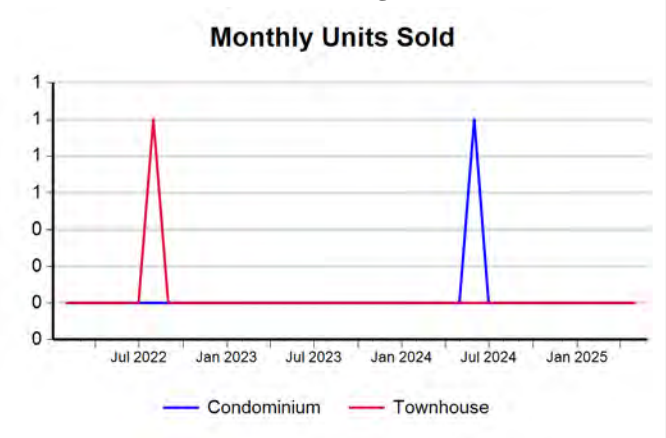
Residential, All (New and Existing)



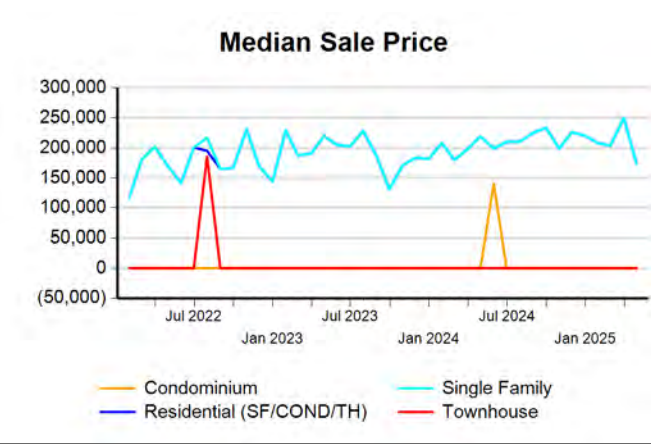
Single Family, New vs. Existing



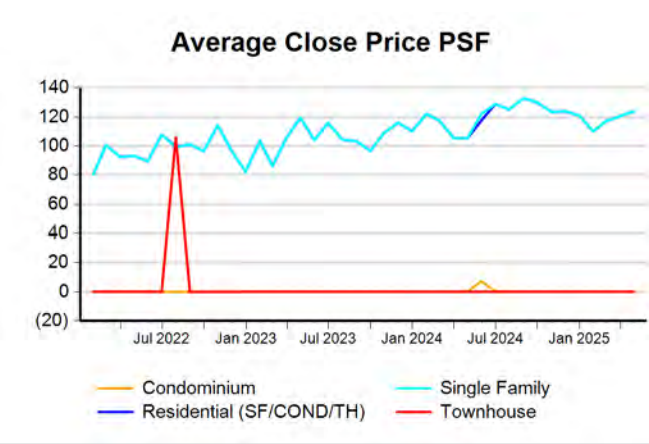
COND/TH, All (New and Existing)



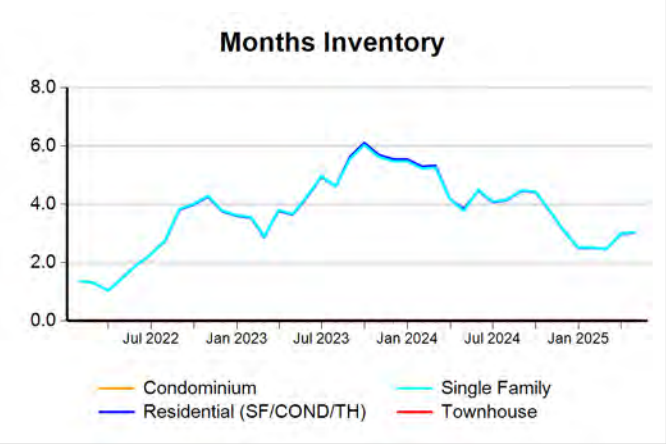
All (New and Existing) Construction



All (New and Existing) Construction



All (New and Existing) Construction



* Closed Sale counts for most recent 3 months are Preliminary.

Trend Analysis By County: Lubbock County

Residential, All (New and Existing)



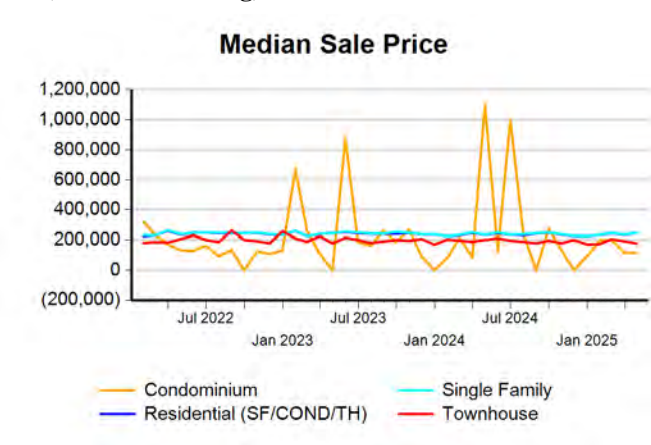
Single Family, New vs. Existing



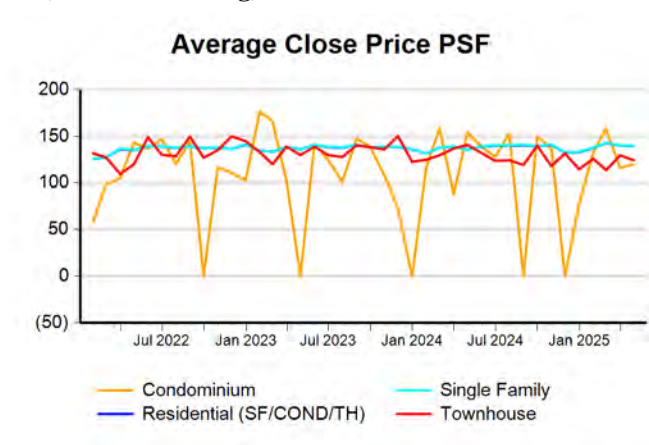
COND/TH, All (New and Existing)



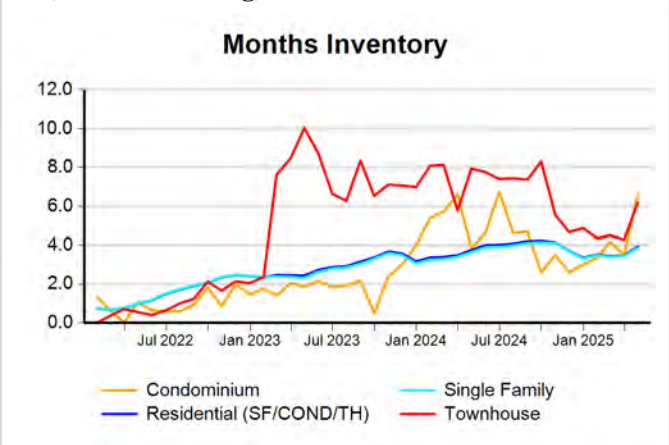
All (New and Existing) Construction



All (New and Existing) Construction

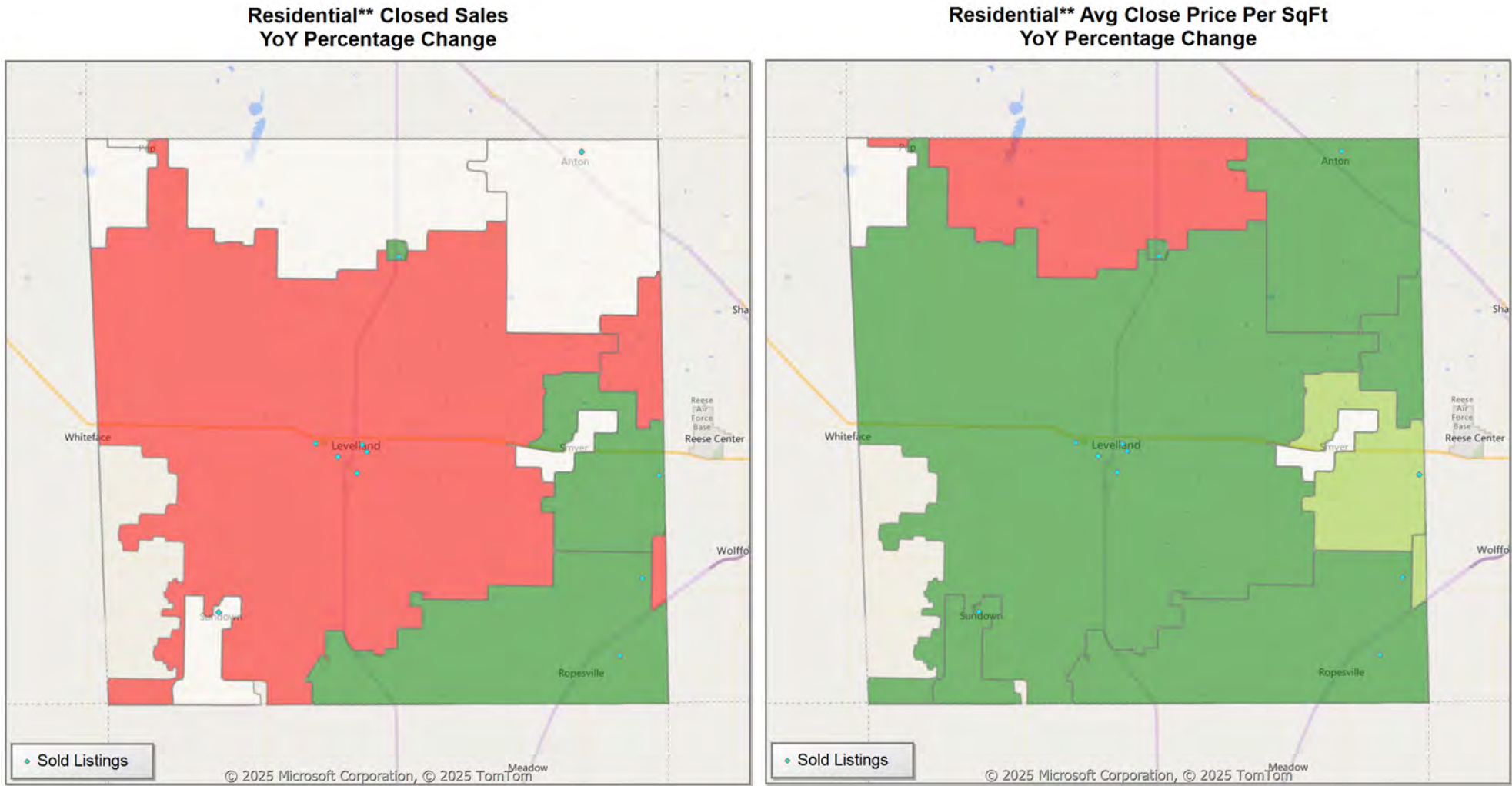


All (New and Existing) Construction

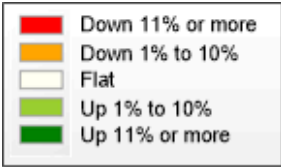


* Closed Sale counts for most recent 3 months are Preliminary.

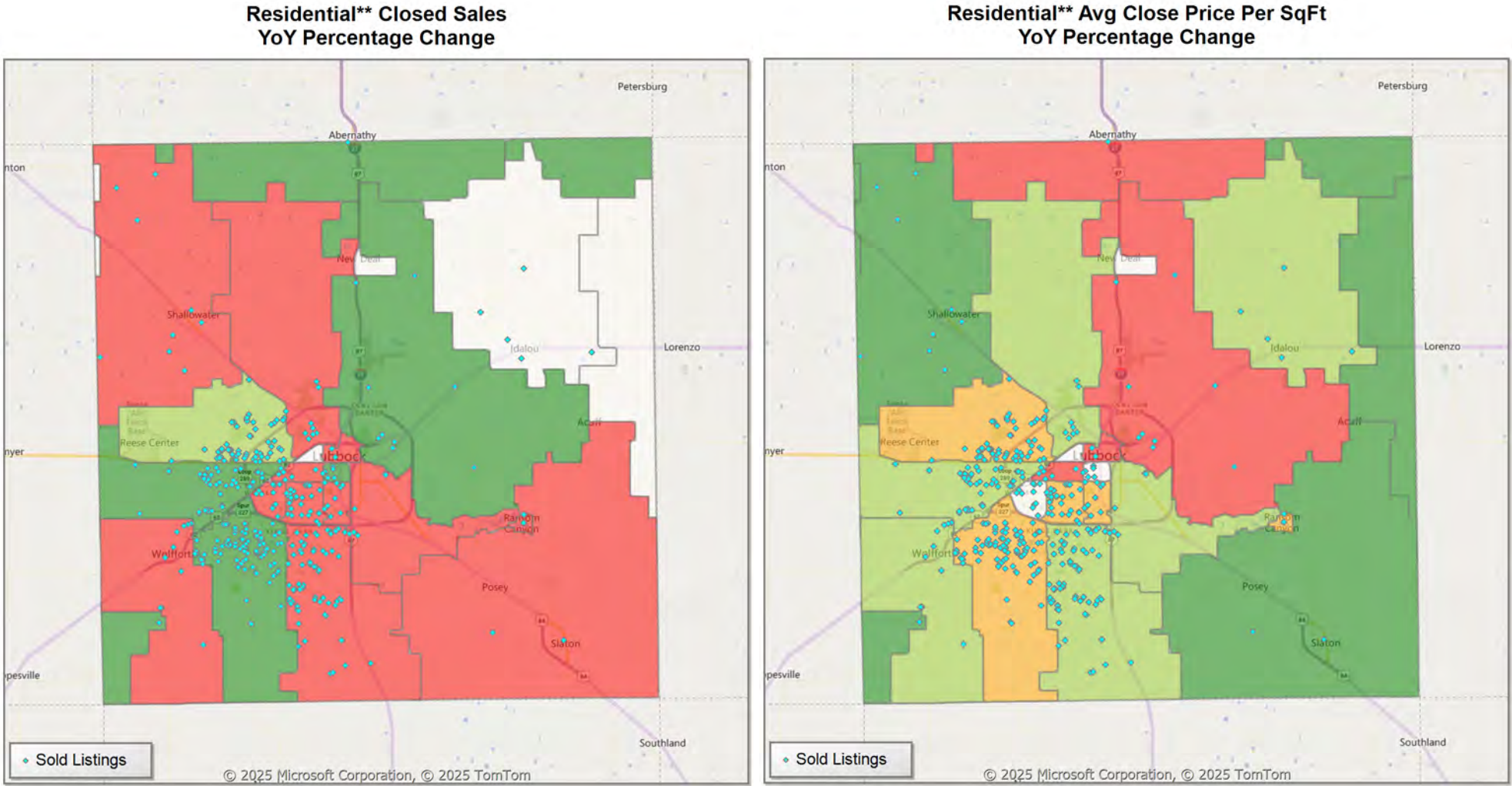
Comparison By Zip Code* in Hockley County



* US Census Zip Code Tabulation Area
** Residential includes Single Family, Condominium and Townhouse.



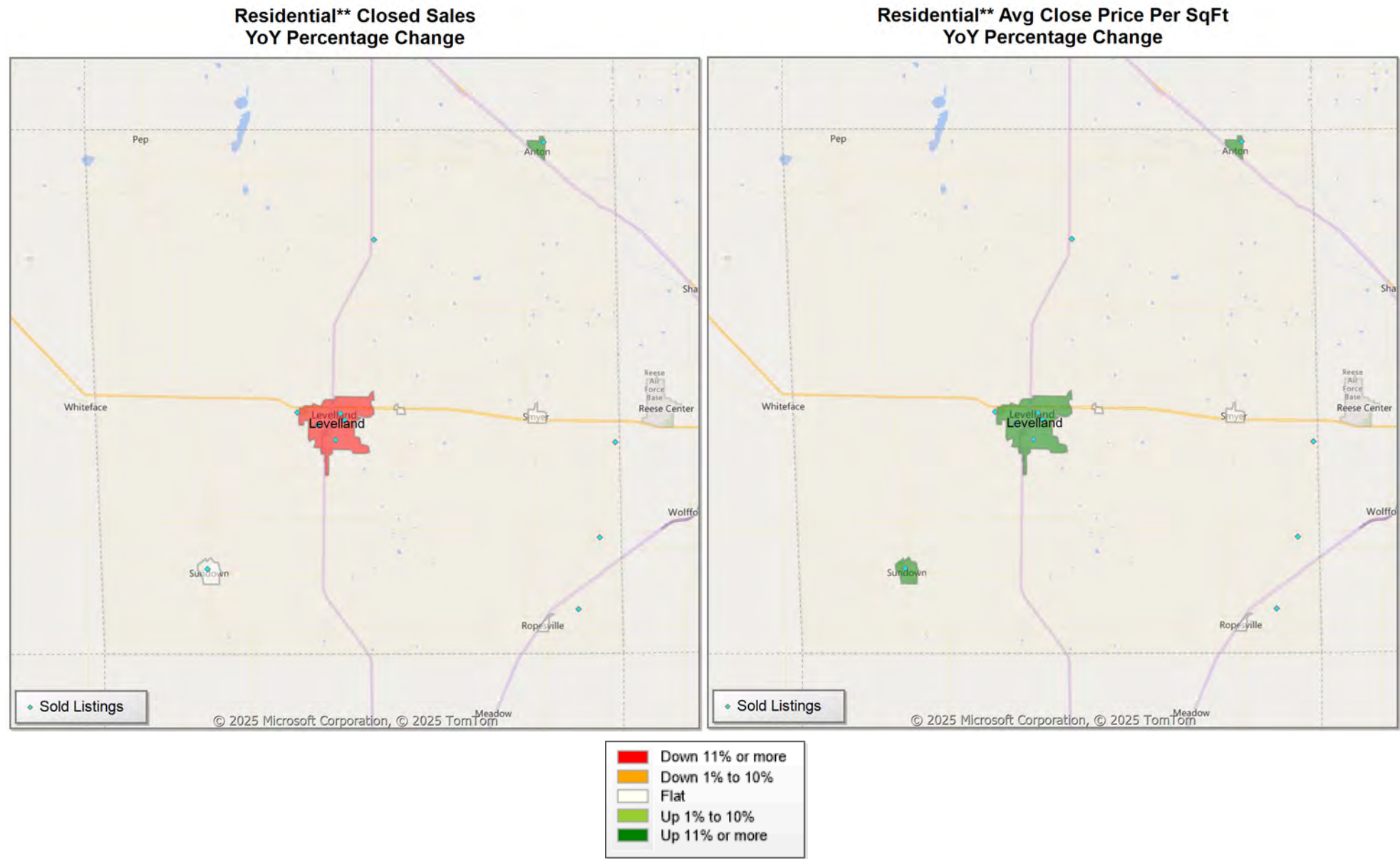
Comparison By Zip Code* in Lubbock County



* US Census Zip Code Tabulation Area
** Residential includes Single Family, Condominium and Townhouse.



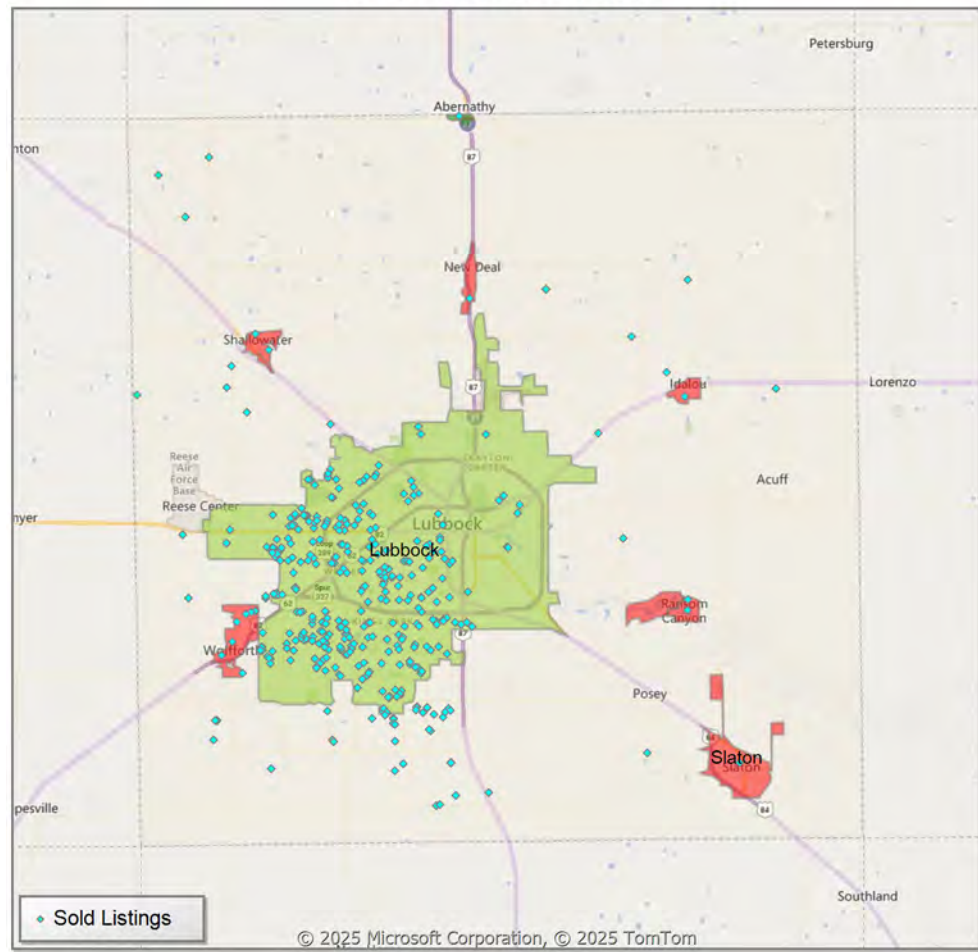
Comparison By Local Market Area* in Hockley County



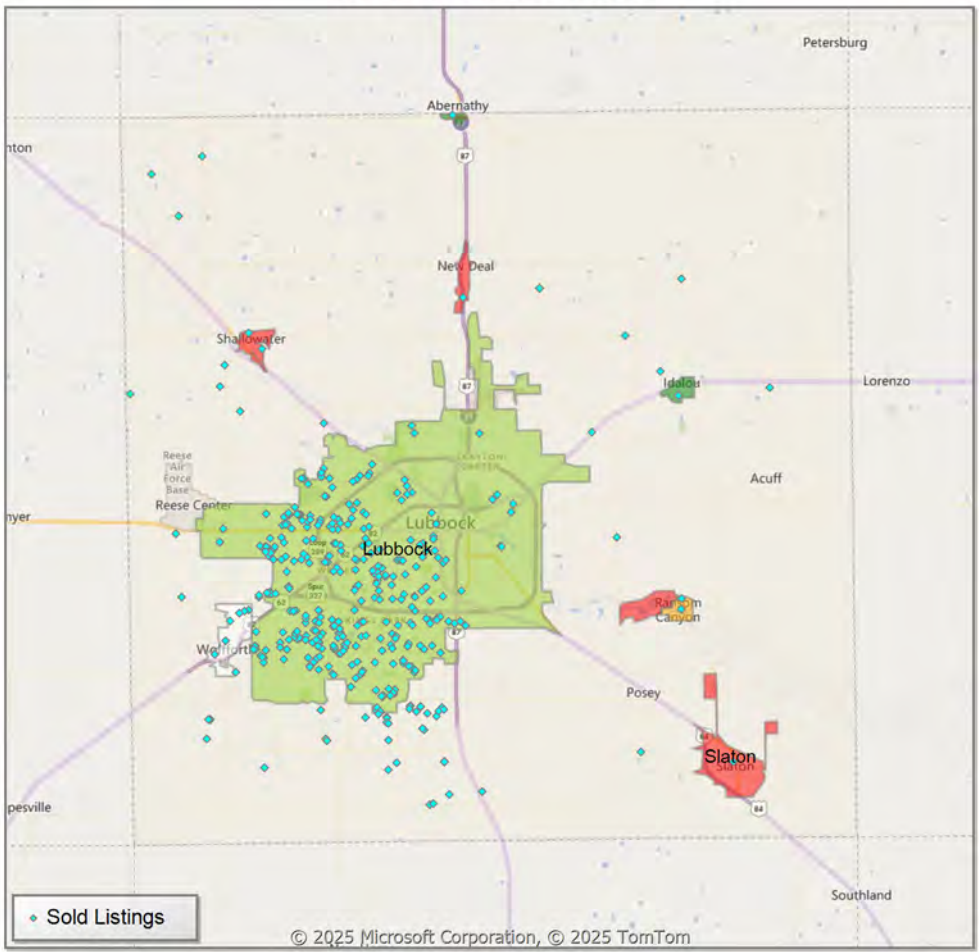
* Census Place Group
** Residential includes Single Family, Condominium and Townhouse.

Comparison By Local Market Area* in Lubbock County

Residential** Closed Sales
YoY Percentage Change



Residential** Avg Close Price Per SqFt
YoY Percentage Change



* Census Place Group
** Residential includes Single Family, Condominium and Townhouse.

Market Analysis By Local Market Area*: Abernathy

Property Type	Closed Sales**	YoY%	Dollar Volume	YoY%	Average Price	YoY%	Median Price	YoY%	Price/ Sqft	YoY%	DOM	New Listings	Active Listings	Pending Sales	Months Inventory	Close To OLP
<u>All(New and Existing)</u>																
Residential (SF/COND/TH)	2	100.0%	\$333,000	100.0%	\$166,500	100.0%	\$166,500	100.0%	\$138	100.0%	158	12	15	3	7.8	89.1%
YTD:	6	100.0%	\$743,800	38.3%	\$123,967	-30.9%	\$136,750	-21.0%	\$90	-21.4%	74	22	12	9		93.4%
Single Family	2	100.0%	\$333,000	100.0%	\$166,500	100.0%	\$166,500	100.0%	\$138	100.0%	158	12	15	3	7.8	89.1%
YTD:	6	100.0%	\$743,800	38.3%	\$123,967	-30.9%	\$136,750	-21.0%	\$90	-21.4%	74	22	12	9		93.4%
Townhouse	-	0.0%	-	0.0%	-	0.0%	-	0.0%	-	0.0%	-	-	-	-	-	0.0%
YTD:	-	0.0%	-	0.0%	-	0.0%	-	0.0%	-	0.0%	-	-	-	-	-	0.0%
Condominium	-	0.0%	-	0.0%	-	0.0%	-	0.0%	-	0.0%	-	-	-	-	-	0.0%
YTD:	-	0.0%	-	0.0%	-	0.0%	-	0.0%	-	0.0%	-	-	-	-	-	0.0%
<u>Existing Home</u>																
Residential (SF/COND/TH)	2	100.0%	\$333,000	100.0%	\$166,500	100.0%	\$166,500	100.0%	\$138	100.0%	158	12	15	3	7.8	89.1%
YTD:	6	100.0%	\$743,800	38.3%	\$123,967	-30.9%	\$136,750	-21.0%	\$90	-21.4%	74	22	12	9		93.4%
Single Family	2	100.0%	\$333,000	100.0%	\$166,500	100.0%	\$166,500	100.0%	\$138	100.0%	158	12	15	3	7.8	89.1%
YTD:	6	100.0%	\$743,800	38.3%	\$123,967	-30.9%	\$136,750	-21.0%	\$90	-21.4%	74	22	12	9		93.4%
Townhouse	-	0.0%	-	0.0%	-	0.0%	-	0.0%	-	0.0%	-	-	-	-	-	0.0%
YTD:	-	0.0%	-	0.0%	-	0.0%	-	0.0%	-	0.0%	-	-	-	-	-	0.0%
Condominium	-	0.0%	-	0.0%	-	0.0%	-	0.0%	-	0.0%	-	-	-	-	-	0.0%
YTD:	-	0.0%	-	0.0%	-	0.0%	-	0.0%	-	0.0%	-	-	-	-	-	0.0%
<u>New Construction</u>																
Residential (SF/COND/TH)	-	0.0%	-	0.0%	-	0.0%	-	0.0%	-	0.0%	-	-	-	-	-	0.0%
YTD:	-	0.0%	-	0.0%	-	0.0%	-	0.0%	-	0.0%	-	-	-	-	-	0.0%
Single Family	-	0.0%	-	0.0%	-	0.0%	-	0.0%	-	0.0%	-	-	-	-	-	0.0%
YTD:	-	0.0%	-	0.0%	-	0.0%	-	0.0%	-	0.0%	-	-	-	-	-	0.0%
Townhouse	-	0.0%	-	0.0%	-	0.0%	-	0.0%	-	0.0%	-	-	-	-	-	0.0%
YTD:	-	0.0%	-	0.0%	-	0.0%	-	0.0%	-	0.0%	-	-	-	-	-	0.0%
Condominium	-	0.0%	-	0.0%	-	0.0%	-	0.0%	-	0.0%	-	-	-	-	-	0.0%
YTD:	-	0.0%	-	0.0%	-	0.0%	-	0.0%	-	0.0%	-	-	-	-	-	0.0%

* Local Market Area Code: 2; Type: Census Place Group

** Closed Sale counts for most recent 3 months are Preliminary.

Market Analysis By Local Market Area*: Anton

Property Type	Closed Sales**		YoY%	Dollar Volume	YoY%	Average Price	YoY%	Median Price	YoY%	Price/ Sqft	YoY%	DOM	New Listings	Active Listings	Pending Sales	Months Inventory	Close To OLP
<u>All(New and Existing)</u>																	
Residential (SF/COND/TH)	1	100.0%		\$135,000	100.0%	\$135,000	100.0%	\$135,000	100.0%	\$88	100.0%	20	1	7	-	16.8	100.0%
YTD:	2	0.0%		\$295,000	20.4%	\$147,500	20.4%	\$147,500	20.4%	\$83	-9.3%	40	5	5	2		100.0%
Single Family	1	100.0%		\$135,000	100.0%	\$135,000	100.0%	\$135,000	100.0%	\$88	100.0%	20	1	7	-	16.8	100.0%
YTD:	2	0.0%		\$295,000	20.4%	\$147,500	20.4%	\$147,500	20.4%	\$83	-9.3%	40	5	5	2		100.0%
Townhouse	-	0.0%		-	0.0%	-	0.0%	-	0.0%	-	0.0%	-	-	-	-	-	0.0%
YTD:	-	0.0%		-	0.0%	-	0.0%	-	0.0%	-	0.0%	-	-	-	-		0.0%
Condominium	-	0.0%		-	0.0%	-	0.0%	-	0.0%	-	0.0%	-	-	-	-	-	0.0%
YTD:	-	0.0%		-	0.0%	-	0.0%	-	0.0%	-	0.0%	-	-	-	-		0.0%
<u>Existing Home</u>																	
Residential (SF/COND/TH)	1	100.0%		\$135,000	100.0%	\$135,000	100.0%	\$135,000	100.0%	\$88	100.0%	20	1	7	-	16.8	100.0%
YTD:	2	0.0%		\$295,000	20.4%	\$147,500	20.4%	\$147,500	20.4%	\$83	-9.3%	40	5	5	2		100.0%
Single Family	1	100.0%		\$135,000	100.0%	\$135,000	100.0%	\$135,000	100.0%	\$88	100.0%	20	1	7	-	16.8	100.0%
YTD:	2	0.0%		\$295,000	20.4%	\$147,500	20.4%	\$147,500	20.4%	\$83	-9.3%	40	5	5	2		100.0%
Townhouse	-	0.0%		-	0.0%	-	0.0%	-	0.0%	-	0.0%	-	-	-	-	-	0.0%
YTD:	-	0.0%		-	0.0%	-	0.0%	-	0.0%	-	0.0%	-	-	-	-		0.0%
Condominium	-	0.0%		-	0.0%	-	0.0%	-	0.0%	-	0.0%	-	-	-	-	-	0.0%
YTD:	-	0.0%		-	0.0%	-	0.0%	-	0.0%	-	0.0%	-	-	-	-		0.0%
<u>New Construction</u>																	
Residential (SF/COND/TH)	-	0.0%		-	0.0%	-	0.0%	-	0.0%	-	0.0%	-	-	-	-	-	0.0%
YTD:	-	0.0%		-	0.0%	-	0.0%	-	0.0%	-	0.0%	-	-	-	-		0.0%
Single Family	-	0.0%		-	0.0%	-	0.0%	-	0.0%	-	0.0%	-	-	-	-	-	0.0%
YTD:	-	0.0%		-	0.0%	-	0.0%	-	0.0%	-	0.0%	-	-	-	-		0.0%
Townhouse	-	0.0%		-	0.0%	-	0.0%	-	0.0%	-	0.0%	-	-	-	-	-	0.0%
YTD:	-	0.0%		-	0.0%	-	0.0%	-	0.0%	-	0.0%	-	-	-	-		0.0%
Condominium	-	0.0%		-	0.0%	-	0.0%	-	0.0%	-	0.0%	-	-	-	-	-	0.0%
YTD:	-	0.0%		-	0.0%	-	0.0%	-	0.0%	-	0.0%	-	-	-	-		0.0%

* Local Market Area Code: 1014; Type: Census Place Group

** Closed Sale counts for most recent 3 months are Preliminary.

Market Analysis By Local Market Area*: Buffalo Springs

Property Type	Closed Sales**	YoY%	Dollar Volume	YoY%	Average Price	YoY%	Median Price	YoY%	Price/ Sqft	YoY%	DOM	New Listings	Active Listings	Pending Sales	Months Inventory	Close To OLP
<u>All(New and Existing)</u>																
Residential (SF/COND/TH)	-	-100.0%	-	-100.0%	-	-100.0%	-	-100.0%	-	-100.0%	-	7	15	-	15.0	0.0%
YTD:	-	-100.0%	-	-100.0%	-	-100.0%	-	-100.0%	-	-100.0%	-	14	11	1		0.0%
Single Family	-	-100.0%	-	-100.0%	-	-100.0%	-	-100.0%	-	-100.0%	-	7	15	-	15.0	0.0%
YTD:	-	-100.0%	-	-100.0%	-	-100.0%	-	-100.0%	-	-100.0%	-	14	11	1		0.0%
Townhouse	-	0.0%	-	0.0%	-	0.0%	-	0.0%	-	0.0%	-	-	-	-	-	0.0%
YTD:	-	0.0%	-	0.0%	-	0.0%	-	0.0%	-	0.0%	-	-	-	-	-	0.0%
Condominium	-	0.0%	-	0.0%	-	0.0%	-	0.0%	-	0.0%	-	-	-	-	-	0.0%
YTD:	-	0.0%	-	0.0%	-	0.0%	-	0.0%	-	0.0%	-	-	-	-	-	0.0%
<u>Existing Home</u>																
Residential (SF/COND/TH)	-	-100.0%	-	-100.0%	-	-100.0%	-	-100.0%	-	-100.0%	-	7	15	-	15.0	0.0%
YTD:	-	-100.0%	-	-100.0%	-	-100.0%	-	-100.0%	-	-100.0%	-	14	11	1		0.0%
Single Family	-	-100.0%	-	-100.0%	-	-100.0%	-	-100.0%	-	-100.0%	-	7	15	-	15.0	0.0%
YTD:	-	-100.0%	-	-100.0%	-	-100.0%	-	-100.0%	-	-100.0%	-	14	11	1		0.0%
Townhouse	-	0.0%	-	0.0%	-	0.0%	-	0.0%	-	0.0%	-	-	-	-	-	0.0%
YTD:	-	0.0%	-	0.0%	-	0.0%	-	0.0%	-	0.0%	-	-	-	-	-	0.0%
Condominium	-	0.0%	-	0.0%	-	0.0%	-	0.0%	-	0.0%	-	-	-	-	-	0.0%
YTD:	-	0.0%	-	0.0%	-	0.0%	-	0.0%	-	0.0%	-	-	-	-	-	0.0%
<u>New Construction</u>																
Residential (SF/COND/TH)	-	0.0%	-	0.0%	-	0.0%	-	0.0%	-	0.0%	-	-	-	-	-	0.0%
YTD:	-	0.0%	-	0.0%	-	0.0%	-	0.0%	-	0.0%	-	-	-	-	-	0.0%
Single Family	-	0.0%	-	0.0%	-	0.0%	-	0.0%	-	0.0%	-	-	-	-	-	0.0%
YTD:	-	0.0%	-	0.0%	-	0.0%	-	0.0%	-	0.0%	-	-	-	-	-	0.0%
Townhouse	-	0.0%	-	0.0%	-	0.0%	-	0.0%	-	0.0%	-	-	-	-	-	0.0%
YTD:	-	0.0%	-	0.0%	-	0.0%	-	0.0%	-	0.0%	-	-	-	-	-	0.0%
Condominium	-	0.0%	-	0.0%	-	0.0%	-	0.0%	-	0.0%	-	-	-	-	-	0.0%
YTD:	-	0.0%	-	0.0%	-	0.0%	-	0.0%	-	0.0%	-	-	-	-	-	0.0%

* Local Market Area Code: 135; Type: Census Place Group

** Closed Sale counts for most recent 3 months are Preliminary.

Market Analysis By Local Market Area*: Idalou

Property Type	Closed Sales**	YoY%	Dollar Volume	YoY%	Average Price	YoY%	Median Price	YoY%	Price/ Sqft	YoY%	DOM	New Listings	Active Listings	Pending Sales	Months Inventory	Close To OLP
<u>All(New and Existing)</u>																
Residential (SF/COND/TH)	1	-50.0%	\$237,500	-42.8%	\$237,500	14.5%	\$237,500	14.5%	\$104	26.7%	196	-	4	3	3.0	95.2%
YTD:	3	-57.1%	\$635,000	-47.2%	\$211,667	23.2%	\$199,500	2.3%	\$115	22.6%	105	4	5	5		98.2%
Single Family	1	-50.0%	\$237,500	-42.8%	\$237,500	14.5%	\$237,500	14.5%	\$104	26.7%	196	-	4	3	3.0	95.2%
YTD:	3	-57.1%	\$635,000	-47.2%	\$211,667	23.2%	\$199,500	2.3%	\$115	22.6%	105	4	5	5		98.2%
Townhouse	-	0.0%	-	0.0%	-	0.0%	-	0.0%	-	0.0%	-	-	-	-	-	0.0%
YTD:	-	0.0%	-	0.0%	-	0.0%	-	0.0%	-	0.0%	-	-	-	-	-	0.0%
Condominium	-	0.0%	-	0.0%	-	0.0%	-	0.0%	-	0.0%	-	-	-	-	-	0.0%
YTD:	-	0.0%	-	0.0%	-	0.0%	-	0.0%	-	0.0%	-	-	-	-	-	0.0%
<u>Existing Home</u>																
Residential (SF/COND/TH)	1	-50.0%	\$237,500	-42.8%	\$237,500	14.5%	\$237,500	14.5%	\$104	26.7%	196	-	4	3	3.0	95.2%
YTD:	3	-57.1%	\$635,000	-47.2%	\$211,667	23.2%	\$199,500	2.3%	\$115	22.6%	105	4	5	5		98.2%
Single Family	1	-50.0%	\$237,500	-42.8%	\$237,500	14.5%	\$237,500	14.5%	\$104	26.7%	196	-	4	3	3.0	95.2%
YTD:	3	-57.1%	\$635,000	-47.2%	\$211,667	23.2%	\$199,500	2.3%	\$115	22.6%	105	4	5	5		98.2%
Townhouse	-	0.0%	-	0.0%	-	0.0%	-	0.0%	-	0.0%	-	-	-	-	-	0.0%
YTD:	-	0.0%	-	0.0%	-	0.0%	-	0.0%	-	0.0%	-	-	-	-	-	0.0%
Condominium	-	0.0%	-	0.0%	-	0.0%	-	0.0%	-	0.0%	-	-	-	-	-	0.0%
YTD:	-	0.0%	-	0.0%	-	0.0%	-	0.0%	-	0.0%	-	-	-	-	-	0.0%
<u>New Construction</u>																
Residential (SF/COND/TH)	-	0.0%	-	0.0%	-	0.0%	-	0.0%	-	0.0%	-	-	-	-	-	0.0%
YTD:	-	0.0%	-	0.0%	-	0.0%	-	0.0%	-	0.0%	-	-	-	-	-	0.0%
Single Family	-	0.0%	-	0.0%	-	0.0%	-	0.0%	-	0.0%	-	-	-	-	-	0.0%
YTD:	-	0.0%	-	0.0%	-	0.0%	-	0.0%	-	0.0%	-	-	-	-	-	0.0%
Townhouse	-	0.0%	-	0.0%	-	0.0%	-	0.0%	-	0.0%	-	-	-	-	-	0.0%
YTD:	-	0.0%	-	0.0%	-	0.0%	-	0.0%	-	0.0%	-	-	-	-	-	0.0%
Condominium	-	0.0%	-	0.0%	-	0.0%	-	0.0%	-	0.0%	-	-	-	-	-	0.0%
YTD:	-	0.0%	-	0.0%	-	0.0%	-	0.0%	-	0.0%	-	-	-	-	-	0.0%

* Local Market Area Code: 456; Type: Census Place Group
** Closed Sale counts for most recent 3 months are Preliminary.

Market Analysis By Local Market Area*: Levelland

Property Type	Closed Sales**		YoY%	Dollar Volume	YoY%	Average Price	YoY%	Median Price	YoY%	Price/ Sqft	YoY%	DOM	New Listings	Active Listings	Pending Sales	Months Inventory	Close To OLP
<u>All(New and Existing)</u>																	
Residential (SF/COND/TH)	4	-77.8%		\$716,000	-80.1%	\$179,000	-10.6%	\$164,000	-20.9%	\$109	16.9%	106	9	20	13	2.4	98.3%
YTD:	28	-45.1%		\$6,039,100	-35.1%	\$215,682	18.3%	\$225,250	21.2%	\$102	9.8%	131	48	25	38		94.9%
Single Family	4	-77.8%		\$716,000	-80.1%	\$179,000	-10.6%	\$164,000	-20.9%	\$109	16.9%	106	9	20	13	2.5	98.3%
YTD:	28	-45.1%		\$6,039,100	-35.1%	\$215,682	18.3%	\$225,250	21.2%	\$102	9.8%	131	48	25	38		94.9%
Townhouse	-	0.0%		-	0.0%	-	0.0%	-	0.0%	-	0.0%	-	-	-	-	-	0.0%
YTD:	-	0.0%		-	0.0%	-	0.0%	-	0.0%	-	0.0%	-	-	-	-	-	0.0%
Condominium	-	0.0%		-	0.0%	-	0.0%	-	0.0%	-	0.0%	-	-	-	-	-	0.0%
YTD:	-	0.0%		-	0.0%	-	0.0%	-	0.0%	-	0.0%	-	-	-	-	-	0.0%
<u>Existing Home</u>																	
Residential (SF/COND/TH)	4	-77.8%		\$716,000	-80.1%	\$179,000	-10.6%	\$164,000	-20.9%	\$109	16.9%	106	9	20	13	2.5	98.3%
YTD:	28	-44.0%		\$6,039,100	-32.9%	\$215,682	19.8%	\$225,250	21.5%	\$102	11.2%	131	48	25	38		94.9%
Single Family	4	-77.8%		\$716,000	-80.1%	\$179,000	-10.6%	\$164,000	-20.9%	\$109	16.9%	106	9	20	13	2.5	98.3%
YTD:	28	-44.0%		\$6,039,100	-32.9%	\$215,682	19.8%	\$225,250	21.5%	\$102	11.2%	131	48	25	38		94.9%
Townhouse	-	0.0%		-	0.0%	-	0.0%	-	0.0%	-	0.0%	-	-	-	-	-	0.0%
YTD:	-	0.0%		-	0.0%	-	0.0%	-	0.0%	-	0.0%	-	-	-	-	-	0.0%
Condominium	-	0.0%		-	0.0%	-	0.0%	-	0.0%	-	0.0%	-	-	-	-	-	0.0%
YTD:	-	0.0%		-	0.0%	-	0.0%	-	0.0%	-	0.0%	-	-	-	-	-	0.0%
<u>New Construction</u>																	
Residential (SF/COND/TH)	-	0.0%		-	0.0%	-	0.0%	-	0.0%	-	0.0%	-	-	-	-	-	0.0%
YTD:	-	-100.0%		-	-100.0%	-	-100.0%	-	-100.0%	-	-100.0%	-	-	-	-	-	0.0%
Single Family	-	0.0%		-	0.0%	-	0.0%	-	0.0%	-	0.0%	-	-	-	-	-	0.0%
YTD:	-	-100.0%		-	-100.0%	-	-100.0%	-	-100.0%	-	-100.0%	-	-	-	-	-	0.0%
Townhouse	-	0.0%		-	0.0%	-	0.0%	-	0.0%	-	0.0%	-	-	-	-	-	0.0%
YTD:	-	0.0%		-	0.0%	-	0.0%	-	0.0%	-	0.0%	-	-	-	-	-	0.0%
Condominium	-	0.0%		-	0.0%	-	0.0%	-	0.0%	-	0.0%	-	-	-	-	-	0.0%
YTD:	-	0.0%		-	0.0%	-	0.0%	-	0.0%	-	0.0%	-	-	-	-	-	0.0%

* Local Market Area Code: 220; Type: Census Place Group

** Closed Sale counts for most recent 3 months are Preliminary.

Market Analysis By Local Market Area*: Lubbock

Property Type	Closed Sales**	YoY%	Dollar Volume	YoY%	Average Price	YoY%	Median Price	YoY%	Price/ Sqft	YoY%	DOM	New Listings	Active Listings	Pending Sales	Months Inventory	Close To OLP
<u>All(New and Existing)</u>																
Residential (SF/COND/TH)	339	10.1%	\$92,857,370	13.7%	\$273,916	3.3%	\$230,000	4.0%	\$133	1.6%	47	630	1,034	378	3.8	96.0%
YTD:	1,106	13.7%	\$297,725,188	16.3%	\$269,191	2.3%	\$228,500	1.6%	\$133	2.7%	55	2,204	967	1,357		95.3%
Single Family	331	11.8%	\$91,271,920	20.5%	\$275,746	7.8%	\$231,500	5.2%	\$133	2.4%	47	602	994	370	3.7	96.0%
YTD:	1,081	14.6%	\$292,827,589	18.8%	\$270,886	3.6%	\$230,000	2.2%	\$133	3.2%	55	2,147	930	1,329		95.3%
Townhouse	6	-14.3%	\$1,219,500	-18.7%	\$203,250	-5.2%	\$176,500	-15.6%	\$123	-16.6%	49	20	29	6	5.4	97.4%
YTD:	17	-15.0%	\$3,451,725	-18.3%	\$203,043	-3.9%	\$190,000	-4.5%	\$122	-13.2%	76	40	28	20		92.6%
Condominium	1	-80.0%	\$114,000	-97.4%	\$114,000	-87.2%	\$114,000	-89.6%	\$120	-22.1%	64	8	11	2	7.3	95.8%
YTD:	6	-40.0%	\$938,000	-81.9%	\$156,333	-69.8%	\$117,000	-47.3%	\$129	-11.0%	86	17	8	8		92.9%
<u>Existing Home</u>																
Residential (SF/COND/TH)	287	6.3%	\$77,287,649	10.2%	\$269,295	3.6%	\$220,000	2.3%	\$128	1.2%	48	565	940	318	4.0	95.9%
YTD:	888	7.0%	\$235,227,436	12.6%	\$264,896	5.2%	\$221,250	3.4%	\$128	2.6%	56	1,928	864	1,103		95.1%
Single Family	279	6.9%	\$75,705,359	16.6%	\$271,345	9.1%	\$220,000	2.3%	\$128	1.8%	48	538	905	310	3.9	95.9%
YTD:	864	6.9%	\$230,602,902	14.6%	\$266,902	7.2%	\$222,500	3.5%	\$128	3.0%	56	1,872	833	1,076		95.1%
Townhouse	6	50.0%	\$1,219,500	51.4%	\$203,250	0.9%	\$176,500	13.7%	\$123	-8.6%	49	19	24	6	5.1	97.4%
YTD:	17	41.7%	\$3,451,725	36.7%	\$203,043	-3.5%	\$190,000	0.0%	\$122	-7.3%	76	39	23	19		92.6%
Condominium	1	-80.0%	\$114,000	-97.4%	\$114,000	-87.2%	\$114,000	-89.6%	\$120	-22.1%	64	8	11	2	7.3	95.8%
YTD:	6	-40.0%	\$938,000	-81.9%	\$156,333	-69.8%	\$117,000	-47.3%	\$129	-11.0%	86	17	8	8		92.9%
<u>New Construction</u>																
Residential (SF/COND/TH)	52	36.8%	\$15,569,906	35.3%	\$299,421	-1.2%	\$264,480	5.1%	\$158	-0.9%	42	65	94	60	2.5	96.4%
YTD:	218	52.5%	\$62,499,036	32.9%	\$286,693	-12.8%	\$245,000	-9.3%	\$156	-3.0%	49	276	102	254		96.1%
Single Family	52	48.6%	\$15,569,906	43.9%	\$299,421	-3.1%	\$264,480	2.2%	\$158	-0.6%	42	64	89	60	2.4	96.4%
YTD:	218	61.5%	\$62,499,036	37.9%	\$286,693	-14.6%	\$245,000	-10.9%	\$156	-3.3%	49	275	97	253		96.1%
Townhouse	-	-100.0%	-	-100.0%	-	-100.0%	-	-100.0%	-	-100.0%	-	1	5	-	7.5	0.0%
YTD:	-	-100.0%	-	-100.0%	-	-100.0%	-	-100.0%	-	-100.0%	-	1	4	1		0.0%
Condominium	-	0.0%	-	0.0%	-	0.0%	-	0.0%	-	0.0%	-	-	-	-	-	0.0%
YTD:	-	0.0%	-	0.0%	-	0.0%	-	0.0%	-	0.0%	-	-	-	-	-	0.0%

* Local Market Area Code: 596; Type: Census Place Group
** Closed Sale counts for most recent 3 months are Preliminary.

Market Analysis By Local Market Area*: New Deal

Property Type	Closed Sales**	YoY%	Dollar Volume	YoY%	Average Price	YoY%	Median Price	YoY%	Price/ Sqft	YoY%	DOM	New Listings	Active Listings	Pending Sales	Months Inventory	Close To OLP
<u>All(New and Existing)</u>																
Residential (SF/COND/TH)	1	-50.0%	\$164,000	-56.0%	\$164,000	-12.1%	\$164,000	-12.1%	\$81	-26.6%	-	1	1	2	2.0	100.0%
YTD:	2	0.0%	\$304,000	-18.5%	\$152,000	-18.5%	\$152,000	-18.5%	\$96	-13.0%	7	4	1	3		100.0%
Single Family	1	-50.0%	\$164,000	-56.0%	\$164,000	-12.1%	\$164,000	-12.1%	\$81	-26.6%	-	1	1	2	2.0	100.0%
YTD:	2	0.0%	\$304,000	-18.5%	\$152,000	-18.5%	\$152,000	-18.5%	\$96	-13.0%	7	4	1	3		100.0%
Townhouse	-	0.0%	-	0.0%	-	0.0%	-	0.0%	-	0.0%	-	-	-	-	-	0.0%
YTD:	-	0.0%	-	0.0%	-	0.0%	-	0.0%	-	0.0%	-	-	-	-	-	0.0%
Condominium	-	0.0%	-	0.0%	-	0.0%	-	0.0%	-	0.0%	-	-	-	-	-	0.0%
YTD:	-	0.0%	-	0.0%	-	0.0%	-	0.0%	-	0.0%	-	-	-	-	-	0.0%
<u>Existing Home</u>																
Residential (SF/COND/TH)	1	0.0%	\$164,000	31.2%	\$164,000	31.2%	\$164,000	31.2%	\$81	30.8%	-	1	1	2	2.0	100.0%
YTD:	2	100.0%	\$304,000	143.2%	\$152,000	21.6%	\$152,000	21.6%	\$96	55.0%	7	4	1	3		100.0%
Single Family	1	0.0%	\$164,000	31.2%	\$164,000	31.2%	\$164,000	31.2%	\$81	30.8%	-	1	1	2	2.0	100.0%
YTD:	2	100.0%	\$304,000	143.2%	\$152,000	21.6%	\$152,000	21.6%	\$96	55.0%	7	4	1	3		100.0%
Townhouse	-	0.0%	-	0.0%	-	0.0%	-	0.0%	-	0.0%	-	-	-	-	-	0.0%
YTD:	-	0.0%	-	0.0%	-	0.0%	-	0.0%	-	0.0%	-	-	-	-	-	0.0%
Condominium	-	0.0%	-	0.0%	-	0.0%	-	0.0%	-	0.0%	-	-	-	-	-	0.0%
YTD:	-	0.0%	-	0.0%	-	0.0%	-	0.0%	-	0.0%	-	-	-	-	-	0.0%
<u>New Construction</u>																
Residential (SF/COND/TH)	-	-100.0%	-	-100.0%	-	-100.0%	-	-100.0%	-	-100.0%	-	-	-	-	-	0.0%
YTD:	-	-100.0%	-	-100.0%	-	-100.0%	-	-100.0%	-	-100.0%	-	-	-	-	-	0.0%
Single Family	-	-100.0%	-	-100.0%	-	-100.0%	-	-100.0%	-	-100.0%	-	-	-	-	-	0.0%
YTD:	-	-100.0%	-	-100.0%	-	-100.0%	-	-100.0%	-	-100.0%	-	-	-	-	-	0.0%
Townhouse	-	0.0%	-	0.0%	-	0.0%	-	0.0%	-	0.0%	-	-	-	-	-	0.0%
YTD:	-	0.0%	-	0.0%	-	0.0%	-	0.0%	-	0.0%	-	-	-	-	-	0.0%
Condominium	-	0.0%	-	0.0%	-	0.0%	-	0.0%	-	0.0%	-	-	-	-	-	0.0%
YTD:	-	0.0%	-	0.0%	-	0.0%	-	0.0%	-	0.0%	-	-	-	-	-	0.0%

* Local Market Area Code: 700; Type: Census Place Group
** Closed Sale counts for most recent 3 months are Preliminary.

Market Analysis By Local Market Area*: Ransom Canyon

Property Type	Closed Sales**	YoY%	Dollar Volume	YoY%	Average Price	YoY%	Median Price	YoY%	Price/ Sqft	YoY%	DOM	New Listings	Active Listings	Pending Sales	Months Inventory	Close To OLP
<u>All(New and Existing)</u>																
Residential (SF/COND/TH)	2	-60.0%	\$667,000	-70.3%	\$333,500	-25.7%	\$333,500	-33.3%	\$151	-3.0%	51	8	14	1	4.9	96.1%
YTD:	12	0.0%	\$4,360,810	-11.6%	\$363,401	-11.6%	\$367,500	-13.0%	\$156	7.1%	45	22	11	12		94.9%
Single Family	2	-60.0%	\$667,000	-70.3%	\$333,500	-25.7%	\$333,500	-33.3%	\$151	-3.0%	51	8	14	1	4.9	96.1%
YTD:	12	0.0%	\$4,360,810	-11.6%	\$363,401	-11.6%	\$367,500	-13.0%	\$156	7.1%	45	22	11	12		94.9%
Townhouse	-	0.0%	-	0.0%	-	0.0%	-	0.0%	-	0.0%	-	-	-	-	-	0.0%
YTD:	-	0.0%	-	0.0%	-	0.0%	-	0.0%	-	0.0%	-	-	-	-	-	0.0%
Condominium	-	0.0%	-	0.0%	-	0.0%	-	0.0%	-	0.0%	-	-	-	-	-	0.0%
YTD:	-	0.0%	-	0.0%	-	0.0%	-	0.0%	-	0.0%	-	-	-	-	-	0.0%
<u>Existing Home</u>																
Residential (SF/COND/TH)	2	-60.0%	\$667,000	-70.3%	\$333,500	-25.7%	\$333,500	-33.3%	\$151	-3.0%	51	8	14	1	5.1	96.1%
YTD:	12	0.0%	\$4,360,810	-11.6%	\$363,401	-11.6%	\$367,500	-13.0%	\$156	7.1%	45	22	11	12		94.9%
Single Family	2	-60.0%	\$667,000	-70.3%	\$333,500	-25.7%	\$333,500	-33.3%	\$151	-3.0%	51	8	14	1	5.1	96.1%
YTD:	12	0.0%	\$4,360,810	-11.6%	\$363,401	-11.6%	\$367,500	-13.0%	\$156	7.1%	45	22	11	12		94.9%
Townhouse	-	0.0%	-	0.0%	-	0.0%	-	0.0%	-	0.0%	-	-	-	-	-	0.0%
YTD:	-	0.0%	-	0.0%	-	0.0%	-	0.0%	-	0.0%	-	-	-	-	-	0.0%
Condominium	-	0.0%	-	0.0%	-	0.0%	-	0.0%	-	0.0%	-	-	-	-	-	0.0%
YTD:	-	0.0%	-	0.0%	-	0.0%	-	0.0%	-	0.0%	-	-	-	-	-	0.0%
<u>New Construction</u>																
Residential (SF/COND/TH)	-	0.0%	-	0.0%	-	0.0%	-	0.0%	-	0.0%	-	-	-	-	-	0.0%
YTD:	-	0.0%	-	0.0%	-	0.0%	-	0.0%	-	0.0%	-	-	-	-	-	0.0%
Single Family	-	0.0%	-	0.0%	-	0.0%	-	0.0%	-	0.0%	-	-	-	-	-	0.0%
YTD:	-	0.0%	-	0.0%	-	0.0%	-	0.0%	-	0.0%	-	-	-	-	-	0.0%
Townhouse	-	0.0%	-	0.0%	-	0.0%	-	0.0%	-	0.0%	-	-	-	-	-	0.0%
YTD:	-	0.0%	-	0.0%	-	0.0%	-	0.0%	-	0.0%	-	-	-	-	-	0.0%
Condominium	-	0.0%	-	0.0%	-	0.0%	-	0.0%	-	0.0%	-	-	-	-	-	0.0%
YTD:	-	0.0%	-	0.0%	-	0.0%	-	0.0%	-	0.0%	-	-	-	-	-	0.0%

* Local Market Area Code: 826; Type: Census Place Group

** Closed Sale counts for most recent 3 months are Preliminary.

Market Analysis By Local Market Area*: Ropesville

Property Type	Closed Sales**	YoY%	Dollar Volume	YoY%	Average Price	YoY%	Median Price	YoY%	Price/ Sqft	YoY%	DOM	New Listings	Active Listings	Pending Sales	Months Inventory	Close To OLP
<u>All(New and Existing)</u>																
Residential (SF/COND/TH)	-	0.0%	-	0.0%	-	0.0%	-	0.0%	-	0.0%	-	-	-	-	-	0.0%
YTD:	-	0.0%	-	0.0%	-	0.0%	-	0.0%	-	0.0%	-	1	1	-	-	0.0%
Single Family	-	0.0%	-	0.0%	-	0.0%	-	0.0%	-	0.0%	-	-	-	-	-	0.0%
YTD:	-	0.0%	-	0.0%	-	0.0%	-	0.0%	-	0.0%	-	1	1	-	-	0.0%
Townhouse	-	0.0%	-	0.0%	-	0.0%	-	0.0%	-	0.0%	-	-	-	-	-	0.0%
YTD:	-	0.0%	-	0.0%	-	0.0%	-	0.0%	-	0.0%	-	-	-	-	-	0.0%
Condominium	-	0.0%	-	0.0%	-	0.0%	-	0.0%	-	0.0%	-	-	-	-	-	0.0%
YTD:	-	0.0%	-	0.0%	-	0.0%	-	0.0%	-	0.0%	-	-	-	-	-	0.0%
<u>Existing Home</u>																
Residential (SF/COND/TH)	-	0.0%	-	0.0%	-	0.0%	-	0.0%	-	0.0%	-	-	-	-	-	0.0%
YTD:	-	0.0%	-	0.0%	-	0.0%	-	0.0%	-	0.0%	-	1	1	-	-	0.0%
Single Family	-	0.0%	-	0.0%	-	0.0%	-	0.0%	-	0.0%	-	-	-	-	-	0.0%
YTD:	-	0.0%	-	0.0%	-	0.0%	-	0.0%	-	0.0%	-	1	1	-	-	0.0%
Townhouse	-	0.0%	-	0.0%	-	0.0%	-	0.0%	-	0.0%	-	-	-	-	-	0.0%
YTD:	-	0.0%	-	0.0%	-	0.0%	-	0.0%	-	0.0%	-	-	-	-	-	0.0%
Condominium	-	0.0%	-	0.0%	-	0.0%	-	0.0%	-	0.0%	-	-	-	-	-	0.0%
YTD:	-	0.0%	-	0.0%	-	0.0%	-	0.0%	-	0.0%	-	-	-	-	-	0.0%
<u>New Construction</u>																
Residential (SF/COND/TH)	-	0.0%	-	0.0%	-	0.0%	-	0.0%	-	0.0%	-	-	-	-	-	0.0%
YTD:	-	0.0%	-	0.0%	-	0.0%	-	0.0%	-	0.0%	-	-	-	-	-	0.0%
Single Family	-	0.0%	-	0.0%	-	0.0%	-	0.0%	-	0.0%	-	-	-	-	-	0.0%
YTD:	-	0.0%	-	0.0%	-	0.0%	-	0.0%	-	0.0%	-	-	-	-	-	0.0%
Townhouse	-	0.0%	-	0.0%	-	0.0%	-	0.0%	-	0.0%	-	-	-	-	-	0.0%
YTD:	-	0.0%	-	0.0%	-	0.0%	-	0.0%	-	0.0%	-	-	-	-	-	0.0%
Condominium	-	0.0%	-	0.0%	-	0.0%	-	0.0%	-	0.0%	-	-	-	-	-	0.0%
YTD:	-	0.0%	-	0.0%	-	0.0%	-	0.0%	-	0.0%	-	-	-	-	-	0.0%

* Local Market Area Code: 222; Type: Census Place Group

** Closed Sale counts for most recent 3 months are Preliminary.

Market Analysis By Local Market Area*: Shallowater

Property Type	Closed Sales**		YoY%	Dollar Volume	YoY%	Average Price	YoY%	Median Price	YoY%	Price/ Sqft	YoY%	DOM	New Listings	Active Listings	Pending Sales	Months Inventory	Close To OLP
<u>All(New and Existing)</u>																	
Residential (SF/COND/TH)	2	-71.4%		\$636,000	-65.8%	\$318,000	19.7%	\$318,000	19.1%	\$111	-15.0%	115	6	14	3	3.7	95.4%
YTD:	15	7.1%		\$3,147,500	-4.0%	\$209,833	-10.4%	\$210,000	-14.1%	\$113	-11.6%	56	24	11	18		93.8%
Single Family	2	-71.4%		\$636,000	-65.8%	\$318,000	19.7%	\$318,000	19.1%	\$111	-15.0%	115	6	14	3	3.7	95.4%
YTD:	15	7.1%		\$3,147,500	-4.0%	\$209,833	-10.4%	\$210,000	-14.1%	\$113	-11.6%	56	24	11	18		93.8%
Townhouse	-	0.0%		-	0.0%	-	0.0%	-	0.0%	-	0.0%	-	-	-	-	-	0.0%
YTD:	-	0.0%		-	0.0%	-	0.0%	-	0.0%	-	0.0%	-	-	-	-	-	0.0%
Condominium	-	0.0%		-	0.0%	-	0.0%	-	0.0%	-	0.0%	-	-	-	-	-	0.0%
YTD:	-	0.0%		-	0.0%	-	0.0%	-	0.0%	-	0.0%	-	-	-	-	-	0.0%
<u>Existing Home</u>																	
Residential (SF/COND/TH)	2	-66.7%		\$636,000	-60.0%	\$318,000	20.1%	\$318,000	23.0%	\$111	-12.3%	115	4	10	2	2.9	95.4%
YTD:	14	7.7%		\$2,798,500	-7.0%	\$199,893	-13.6%	\$185,000	-22.9%	\$110	-12.9%	59	19	9	16		93.4%
Single Family	2	-66.7%		\$636,000	-60.0%	\$318,000	20.1%	\$318,000	23.0%	\$111	-12.3%	115	4	10	2	2.9	95.4%
YTD:	14	7.7%		\$2,798,500	-7.0%	\$199,893	-13.6%	\$185,000	-22.9%	\$110	-12.9%	59	19	9	16		93.4%
Townhouse	-	0.0%		-	0.0%	-	0.0%	-	0.0%	-	0.0%	-	-	-	-	-	0.0%
YTD:	-	0.0%		-	0.0%	-	0.0%	-	0.0%	-	0.0%	-	-	-	-	-	0.0%
Condominium	-	0.0%		-	0.0%	-	0.0%	-	0.0%	-	0.0%	-	-	-	-	-	0.0%
YTD:	-	0.0%		-	0.0%	-	0.0%	-	0.0%	-	0.0%	-	-	-	-	-	0.0%
<u>New Construction</u>																	
Residential (SF/COND/TH)	-	-100.0%		-	-100.0%	-	-100.0%	-	-100.0%	-	-100.0%	-	2	4	1	16.0	0.0%
YTD:	1	0.0%		\$349,000	29.3%	\$349,000	29.3%	\$349,000	29.3%	\$163	5.4%	6	5	2	2		98.3%
Single Family	-	-100.0%		-	-100.0%	-	-100.0%	-	-100.0%	-	-100.0%	-	2	4	1	16.0	0.0%
YTD:	1	0.0%		\$349,000	29.3%	\$349,000	29.3%	\$349,000	29.3%	\$163	5.4%	6	5	2	2		98.3%
Townhouse	-	0.0%		-	0.0%	-	0.0%	-	0.0%	-	0.0%	-	-	-	-	-	0.0%
YTD:	-	0.0%		-	0.0%	-	0.0%	-	0.0%	-	0.0%	-	-	-	-	-	0.0%
Condominium	-	0.0%		-	0.0%	-	0.0%	-	0.0%	-	0.0%	-	-	-	-	-	0.0%
YTD:	-	0.0%		-	0.0%	-	0.0%	-	0.0%	-	0.0%	-	-	-	-	-	0.0%

* Local Market Area Code: 925; Type: Census Place Group

** Closed Sale counts for most recent 3 months are Preliminary.

Market Analysis By Local Market Area*: Slaton

Property Type	Closed Sales**		YoY%	Dollar Volume	YoY%	Average Price	YoY%	Median Price	YoY%	Price/ Sqft	YoY%	DOM	New Listings	Active Listings	Pending Sales	Months Inventory	Close To OLP
<u>All(New and Existing)</u>																	
Residential (SF/COND/TH)	1	-87.5%		\$79,000	-93.6%	\$79,000	-48.5%	\$79,000	-41.5%	\$71	-18.3%	145	10	26	2	10.4	88.3%
YTD:	7	-69.6%		\$887,900	-75.6%	\$126,843	-19.8%	\$130,000	-6.1%	\$83	-6.7%	77	27	20	10		88.6%
Single Family	1	-87.5%		\$79,000	-93.6%	\$79,000	-48.5%	\$79,000	-41.5%	\$71	-18.3%	145	10	26	2	10.4	88.3%
YTD:	7	-69.6%		\$887,900	-75.6%	\$126,843	-19.8%	\$130,000	-6.1%	\$83	-6.7%	77	27	20	10		88.6%
Townhouse	-	0.0%		-	0.0%	-	0.0%	-	0.0%	-	0.0%	-	-	-	-	-	0.0%
YTD:	-	0.0%		-	0.0%	-	0.0%	-	0.0%	-	0.0%	-	-	-	-	-	0.0%
Condominium	-	0.0%		-	0.0%	-	0.0%	-	0.0%	-	0.0%	-	-	-	-	-	0.0%
YTD:	-	0.0%		-	0.0%	-	0.0%	-	0.0%	-	0.0%	-	-	-	-	-	0.0%
<u>Existing Home</u>																	
Residential (SF/COND/TH)	1	-87.5%		\$79,000	-93.6%	\$79,000	-48.5%	\$79,000	-41.5%	\$71	-18.3%	145	10	26	2	10.8	88.3%
YTD:	7	-69.6%		\$887,900	-75.6%	\$126,843	-19.8%	\$130,000	-6.1%	\$83	-6.7%	77	27	20	10		88.6%
Single Family	1	-87.5%		\$79,000	-93.6%	\$79,000	-48.5%	\$79,000	-41.5%	\$71	-18.3%	145	10	26	2	10.8	88.3%
YTD:	7	-69.6%		\$887,900	-75.6%	\$126,843	-19.8%	\$130,000	-6.1%	\$83	-6.7%	77	27	20	10		88.6%
Townhouse	-	0.0%		-	0.0%	-	0.0%	-	0.0%	-	0.0%	-	-	-	-	-	0.0%
YTD:	-	0.0%		-	0.0%	-	0.0%	-	0.0%	-	0.0%	-	-	-	-	-	0.0%
Condominium	-	0.0%		-	0.0%	-	0.0%	-	0.0%	-	0.0%	-	-	-	-	-	0.0%
YTD:	-	0.0%		-	0.0%	-	0.0%	-	0.0%	-	0.0%	-	-	-	-	-	0.0%
<u>New Construction</u>																	
Residential (SF/COND/TH)	-	0.0%		-	0.0%	-	0.0%	-	0.0%	-	0.0%	-	-	-	-	-	0.0%
YTD:	-	0.0%		-	0.0%	-	0.0%	-	0.0%	-	0.0%	-	-	-	-	-	0.0%
Single Family	-	0.0%		-	0.0%	-	0.0%	-	0.0%	-	0.0%	-	-	-	-	-	0.0%
YTD:	-	0.0%		-	0.0%	-	0.0%	-	0.0%	-	0.0%	-	-	-	-	-	0.0%
Townhouse	-	0.0%		-	0.0%	-	0.0%	-	0.0%	-	0.0%	-	-	-	-	-	0.0%
YTD:	-	0.0%		-	0.0%	-	0.0%	-	0.0%	-	0.0%	-	-	-	-	-	0.0%
Condominium	-	0.0%		-	0.0%	-	0.0%	-	0.0%	-	0.0%	-	-	-	-	-	0.0%
YTD:	-	0.0%		-	0.0%	-	0.0%	-	0.0%	-	0.0%	-	-	-	-	-	0.0%

* Local Market Area Code: 935; Type: Census Place Group

** Closed Sale counts for most recent 3 months are Preliminary.

Market Analysis By Local Market Area*: Smyer

Property Type	Closed Sales**	YoY%	Dollar Volume	YoY%	Average Price	YoY%	Median Price	YoY%	Price/ Sqft	YoY%	DOM	New Listings	Active Listings	Pending Sales	Months Inventory	Close To OLP
<u>All(New and Existing)</u>																
Residential (SF/COND/TH)	-	0.0%	-	0.0%	-	0.0%	-	0.0%	-	0.0%	-	-	-	-	-	0.0%
YTD:	-	-100.0%	-	-100.0%	-	-100.0%	-	-100.0%	-	-100.0%	-	1	1	-	-	0.0%
Single Family	-	0.0%	-	0.0%	-	0.0%	-	0.0%	-	0.0%	-	-	-	-	-	0.0%
YTD:	-	-100.0%	-	-100.0%	-	-100.0%	-	-100.0%	-	-100.0%	-	1	1	-	-	0.0%
Townhouse	-	0.0%	-	0.0%	-	0.0%	-	0.0%	-	0.0%	-	-	-	-	-	0.0%
YTD:	-	0.0%	-	0.0%	-	0.0%	-	0.0%	-	0.0%	-	-	-	-	-	0.0%
Condominium	-	0.0%	-	0.0%	-	0.0%	-	0.0%	-	0.0%	-	-	-	-	-	0.0%
YTD:	-	0.0%	-	0.0%	-	0.0%	-	0.0%	-	0.0%	-	-	-	-	-	0.0%
<u>Existing Home</u>																
Residential (SF/COND/TH)	-	0.0%	-	0.0%	-	0.0%	-	0.0%	-	0.0%	-	-	-	-	-	0.0%
YTD:	-	-100.0%	-	-100.0%	-	-100.0%	-	-100.0%	-	-100.0%	-	1	1	-	-	0.0%
Single Family	-	0.0%	-	0.0%	-	0.0%	-	0.0%	-	0.0%	-	-	-	-	-	0.0%
YTD:	-	-100.0%	-	-100.0%	-	-100.0%	-	-100.0%	-	-100.0%	-	1	1	-	-	0.0%
Townhouse	-	0.0%	-	0.0%	-	0.0%	-	0.0%	-	0.0%	-	-	-	-	-	0.0%
YTD:	-	0.0%	-	0.0%	-	0.0%	-	0.0%	-	0.0%	-	-	-	-	-	0.0%
Condominium	-	0.0%	-	0.0%	-	0.0%	-	0.0%	-	0.0%	-	-	-	-	-	0.0%
YTD:	-	0.0%	-	0.0%	-	0.0%	-	0.0%	-	0.0%	-	-	-	-	-	0.0%
<u>New Construction</u>																
Residential (SF/COND/TH)	-	0.0%	-	0.0%	-	0.0%	-	0.0%	-	0.0%	-	-	-	-	-	0.0%
YTD:	-	0.0%	-	0.0%	-	0.0%	-	0.0%	-	0.0%	-	-	-	-	-	0.0%
Single Family	-	0.0%	-	0.0%	-	0.0%	-	0.0%	-	0.0%	-	-	-	-	-	0.0%
YTD:	-	0.0%	-	0.0%	-	0.0%	-	0.0%	-	0.0%	-	-	-	-	-	0.0%
Townhouse	-	0.0%	-	0.0%	-	0.0%	-	0.0%	-	0.0%	-	-	-	-	-	0.0%
YTD:	-	0.0%	-	0.0%	-	0.0%	-	0.0%	-	0.0%	-	-	-	-	-	0.0%
Condominium	-	0.0%	-	0.0%	-	0.0%	-	0.0%	-	0.0%	-	-	-	-	-	0.0%
YTD:	-	0.0%	-	0.0%	-	0.0%	-	0.0%	-	0.0%	-	-	-	-	-	0.0%

* Local Market Area Code: 491; Type: Census Place Group
** Closed Sale counts for most recent 3 months are Preliminary.

Market Analysis By Local Market Area*: Sundown

Property Type	Closed Sales**	YoY%	Dollar Volume	YoY%	Average Price	YoY%	Median Price	YoY%	Price/ Sqft	YoY%	DOM	New Listings	Active Listings	Pending Sales	Months Inventory	Close To OLP
<u>All(New and Existing)</u>																
Residential (SF/COND/TH)	1	0.0%	\$235,000	370.0%	\$235,000	370.0%	\$235,000	370.0%	\$116	492.2%	5	-	2	1	3.4	95.9%
YTD:	2	-33.3%	\$380,900	66.3%	\$190,450	149.5%	\$190,450	176.0%	\$88	69.3%	15	3	2	3		98.0%
Single Family	1	0.0%	\$235,000	370.0%	\$235,000	370.0%	\$235,000	370.0%	\$116	492.2%	5	-	2	1	3.4	95.9%
YTD:	2	-33.3%	\$380,900	66.3%	\$190,450	149.5%	\$190,450	176.0%	\$88	69.3%	15	3	2	3		98.0%
Townhouse	-	0.0%	-	0.0%	-	0.0%	-	0.0%	-	0.0%	-	-	-	-	-	0.0%
YTD:	-	0.0%	-	0.0%	-	0.0%	-	0.0%	-	0.0%	-	-	-	-	-	0.0%
Condominium	-	0.0%	-	0.0%	-	0.0%	-	0.0%	-	0.0%	-	-	-	-	-	0.0%
YTD:	-	0.0%	-	0.0%	-	0.0%	-	0.0%	-	0.0%	-	-	-	-	-	0.0%
<u>Existing Home</u>																
Residential (SF/COND/TH)	1	0.0%	\$235,000	370.0%	\$235,000	370.0%	\$235,000	370.0%	\$116	492.2%	5	-	2	1	3.4	95.9%
YTD:	2	-33.3%	\$380,900	66.3%	\$190,450	149.5%	\$190,450	176.0%	\$88	69.3%	15	3	2	3		98.0%
Single Family	1	0.0%	\$235,000	370.0%	\$235,000	370.0%	\$235,000	370.0%	\$116	492.2%	5	-	2	1	3.4	95.9%
YTD:	2	-33.3%	\$380,900	66.3%	\$190,450	149.5%	\$190,450	176.0%	\$88	69.3%	15	3	2	3		98.0%
Townhouse	-	0.0%	-	0.0%	-	0.0%	-	0.0%	-	0.0%	-	-	-	-	-	0.0%
YTD:	-	0.0%	-	0.0%	-	0.0%	-	0.0%	-	0.0%	-	-	-	-	-	0.0%
Condominium	-	0.0%	-	0.0%	-	0.0%	-	0.0%	-	0.0%	-	-	-	-	-	0.0%
YTD:	-	0.0%	-	0.0%	-	0.0%	-	0.0%	-	0.0%	-	-	-	-	-	0.0%
<u>New Construction</u>																
Residential (SF/COND/TH)	-	0.0%	-	0.0%	-	0.0%	-	0.0%	-	0.0%	-	-	-	-	-	0.0%
YTD:	-	0.0%	-	0.0%	-	0.0%	-	0.0%	-	0.0%	-	-	-	-	-	0.0%
Single Family	-	0.0%	-	0.0%	-	0.0%	-	0.0%	-	0.0%	-	-	-	-	-	0.0%
YTD:	-	0.0%	-	0.0%	-	0.0%	-	0.0%	-	0.0%	-	-	-	-	-	0.0%
Townhouse	-	0.0%	-	0.0%	-	0.0%	-	0.0%	-	0.0%	-	-	-	-	-	0.0%
YTD:	-	0.0%	-	0.0%	-	0.0%	-	0.0%	-	0.0%	-	-	-	-	-	0.0%
Condominium	-	0.0%	-	0.0%	-	0.0%	-	0.0%	-	0.0%	-	-	-	-	-	0.0%
YTD:	-	0.0%	-	0.0%	-	0.0%	-	0.0%	-	0.0%	-	-	-	-	-	0.0%

* Local Market Area Code: 223; Type: Census Place Group
** Closed Sale counts for most recent 3 months are Preliminary.

Market Analysis By Local Market Area*: Wolfforth

Property Type	Closed Sales**		YoY%	Dollar Volume	YoY%	Average Price	YoY%	Median Price	YoY%	Price/ Sqft	YoY%	DOM	New Listings	Active Listings	Pending Sales	Months Inventory	Close To OLP
<u>All(New and Existing)</u>																	
Residential (SF/COND/TH)	6	-57.1%		\$1,914,277	-53.9%	\$319,046	7.7%	\$285,639	2.4%	\$155	0.1%	44	25	57	13	5.7	98.7%
YTD:	32	-33.3%		\$10,170,451	-31.2%	\$317,827	3.2%	\$290,245	-5.6%	\$155	1.3%	68	97	49	42		99.1%
Single Family	6	-57.1%		\$1,914,277	-53.9%	\$319,046	7.7%	\$285,639	2.4%	\$155	0.1%	44	25	55	11	5.7	98.7%
YTD:	31	-35.4%		\$9,997,451	-32.4%	\$322,498	4.7%	\$293,500	-4.5%	\$155	1.6%	67	92	48	39		99.1%
Townhouse	-	0.0%		-	0.0%	-	0.0%	-	0.0%	-	0.0%	-	-	2	2	6.0	0.0%
YTD:	1	100.0%		\$173,000	100.0%	\$173,000	100.0%	\$173,000	100.0%	\$142	100.0%	97	5	3	3		98.9%
Condominium	-	0.0%		-	0.0%	-	0.0%	-	0.0%	-	0.0%	-	-	-	-	-	0.0%
YTD:	-	0.0%		-	0.0%	-	0.0%	-	0.0%	-	0.0%	-	-	-	-		0.0%
<u>Existing Home</u>																	
Residential (SF/COND/TH)	5	-50.0%		\$1,445,277	-47.5%	\$289,055	5.0%	\$277,777	5.1%	\$148	0.5%	38	24	49	10	6.0	98.4%
YTD:	23	-39.5%		\$6,578,552	-41.9%	\$286,024	-4.0%	\$253,000	-19.4%	\$145	-2.3%	55	84	41	33		97.9%
Single Family	5	-50.0%		\$1,445,277	-47.5%	\$289,055	5.0%	\$277,777	5.1%	\$148	0.5%	38	24	49	8	6.3	98.4%
YTD:	22	-42.1%		\$6,405,552	-43.4%	\$291,161	-2.3%	\$265,389	-15.4%	\$145	-2.2%	54	82	40	31		97.8%
Townhouse	-	0.0%		-	0.0%	-	0.0%	-	0.0%	-	0.0%	-	-	-	2	-	0.0%
YTD:	1	100.0%		\$173,000	100.0%	\$173,000	100.0%	\$173,000	100.0%	\$142	100.0%	97	2	2	2		98.9%
Condominium	-	0.0%		-	0.0%	-	0.0%	-	0.0%	-	0.0%	-	-	-	-	-	0.0%
YTD:	-	0.0%		-	0.0%	-	0.0%	-	0.0%	-	0.0%	-	-	-	-		0.0%
<u>New Construction</u>																	
Residential (SF/COND/TH)	1	-75.0%		\$469,000	-66.4%	\$469,000	34.5%	\$469,000	37.1%	\$189	9.0%	70	1	8	3	4.4	100.0%
YTD:	9	-10.0%		\$3,591,899	3.8%	\$399,100	15.3%	\$439,000	44.4%	\$180	4.8%	100	13	8	9		102.1%
Single Family	1	-75.0%		\$469,000	-66.4%	\$469,000	34.5%	\$469,000	37.1%	\$189	9.0%	70	1	6	3	3.3	100.0%
YTD:	9	-10.0%		\$3,591,899	3.8%	\$399,100	15.3%	\$439,000	44.4%	\$180	4.8%	100	10	7	8		102.1%
Townhouse	-	0.0%		-	0.0%	-	0.0%	-	0.0%	-	0.0%	-	-	2	-	-	0.0%
YTD:	-	0.0%		-	0.0%	-	0.0%	-	0.0%	-	0.0%	-	3	2	1		0.0%
Condominium	-	0.0%		-	0.0%	-	0.0%	-	0.0%	-	0.0%	-	-	-	-	-	0.0%
YTD:	-	0.0%		-	0.0%	-	0.0%	-	0.0%	-	0.0%	-	-	-	-		0.0%

* Local Market Area Code: 1096; Type: Census Place Group
** Closed Sale counts for most recent 3 months are Preliminary.

