

Market Analysis By State: Texas

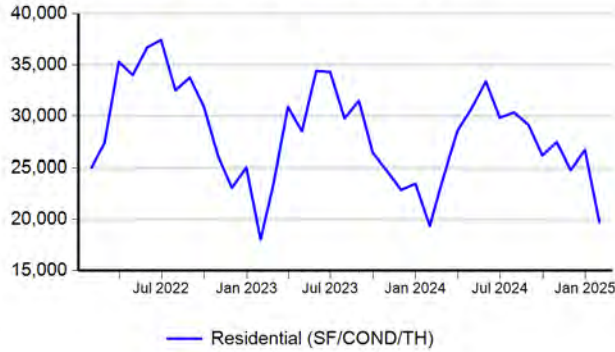
Property Type	Closed Sales*	YoY%	Dollar Volume	YoY%	Average Price	YoY%	Median Price	YoY%	Price/Sqft	YoY%	DOM	New Listings	Active Listings	Pending Sales	Months Inventory	Close To OLP
All(New and Existing)																
Residential (SF/COND/TH)	19,733	2.0%	\$7,996,468,330	4.8%	\$405,233	2.7%	\$327,970	0.9%	\$186	1.1%	73	46,414	120,978	24,884	4.4	93.6%
YTD:	19,733	2.0%	\$7,996,468,330	4.8%	\$405,233	2.7%	\$327,970	0.9%	\$186	1.1%	73	46,414	120,978	24,884		93.6%
Single Family	18,556	1.6%	\$7,572,777,384	4.3%	\$408,104	2.7%	\$330,000	1.5%	\$183	1.1%	72	42,936	111,310	23,492	4.3	93.7%
YTD:	18,556	1.6%	\$7,572,777,384	4.3%	\$408,104	2.7%	\$330,000	1.5%	\$183	1.1%	72	42,936	111,310	23,492		93.7%
Townhouse	519	0.6%	\$183,338,786	0.4%	\$353,254	-0.2%	\$320,000	1.6%	\$191	0.2%	67	1,449	3,440	639	4.9	94.2%
YTD:	519	0.6%	\$183,338,786	0.4%	\$353,254	-0.2%	\$320,000	1.6%	\$191	0.2%	67	1,449	3,440	639		94.2%
Condominium	636	11.0%	\$232,597,609	21.4%	\$365,720	9.4%	\$240,000	2.1%	\$255	-0.5%	91	2,029	6,228	753	7.5	91.7%
YTD:	636	11.0%	\$232,597,609	21.4%	\$365,720	9.4%	\$240,000	2.1%	\$255	-0.5%	91	2,029	6,228	753		91.7%
Existing Home																
Residential (SF/COND/TH)	14,395	2.2%	\$5,811,175,640	6.4%	\$403,694	4.0%	\$320,000	3.2%	\$186	1.8%	71	34,750	88,051	17,165	4.4	93.4%
YTD:	14,395	2.2%	\$5,811,175,640	6.4%	\$403,694	4.0%	\$320,000	3.2%	\$186	1.8%	71	34,750	88,051	17,165		93.4%
Single Family	13,372	1.7%	\$5,470,344,067	6.1%	\$409,089	4.3%	\$323,000	3.0%	\$183	1.9%	70	31,757	79,898	15,994	4.2	93.4%
YTD:	13,372	1.7%	\$5,470,344,067	6.1%	\$409,089	4.3%	\$323,000	3.0%	\$183	1.9%	70	31,757	79,898	15,994		93.4%
Townhouse	394	1.3%	\$129,957,241	-0.3%	\$329,841	-1.6%	\$290,500	0.2%	\$183	-0.1%	64	1,102	2,524	477	4.8	93.8%
YTD:	394	1.3%	\$129,957,241	-0.3%	\$329,841	-1.6%	\$290,500	0.2%	\$183	-0.1%	64	1,102	2,524	477		93.8%
Condominium	609	12.8%	\$204,357,534	16.7%	\$335,562	3.4%	\$230,000	0.0%	\$248	-2.3%	88	1,891	5,629	694	7.2	91.6%
YTD:	609	12.8%	\$204,357,534	16.7%	\$335,562	3.4%	\$230,000	0.0%	\$248	-2.3%	88	1,891	5,629	694		91.6%
New Construction																
Residential (SF/COND/TH)	5,332	1.2%	\$2,182,985,285	0.6%	\$409,412	-0.5%	\$346,000	-1.1%	\$185	-0.8%	79	11,664	32,927	7,719	4.4	94.4%
YTD:	5,332	1.2%	\$2,182,985,285	0.6%	\$409,412	-0.5%	\$346,000	-1.1%	\$185	-0.8%	79	11,664	32,927	7,719		94.4%
Single Family	5,180	1.4%	\$2,100,722,564	0.0%	\$405,545	-1.3%	\$345,265	-1.4%	\$183	-1.1%	78	11,179	31,412	7,498	4.3	94.3%
YTD:	5,180	1.4%	\$2,100,722,564	0.0%	\$405,545	-1.3%	\$345,265	-1.4%	\$183	-1.1%	78	11,179	31,412	7,498		94.3%
Townhouse	123	-3.2%	\$52,684,712	0.6%	\$428,331	3.9%	\$358,000	-3.0%	\$218	1.3%	77	347	916	162	5.5	95.5%
YTD:	123	-3.2%	\$52,684,712	0.6%	\$428,331	3.9%	\$358,000	-3.0%	\$218	1.3%	77	347	916	162		95.5%
Condominium	27	-18.2%	\$27,938,505	69.9%	\$1,034,759	107.6%	\$412,400	-13.0%	\$400	39.2%	163	138	599	59	12.1	93.0%
YTD:	27	-18.2%	\$27,938,505	69.9%	\$1,034,759	107.6%	\$412,400	-13.0%	\$400	39.2%	163	138	599	59		93.0%

* Closed Sale counts for most recent 3 months are Preliminary.

Trend Analysis By State: Texas

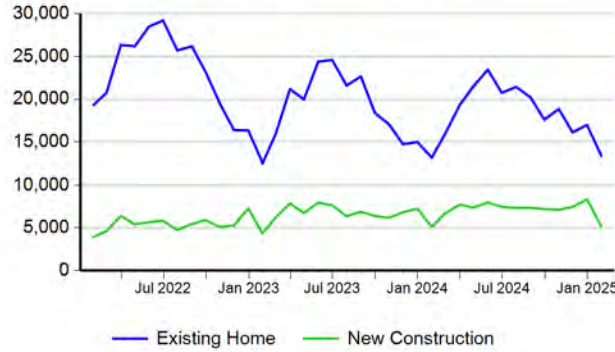
Residential, All (New and Existing)

Monthly Units Sold



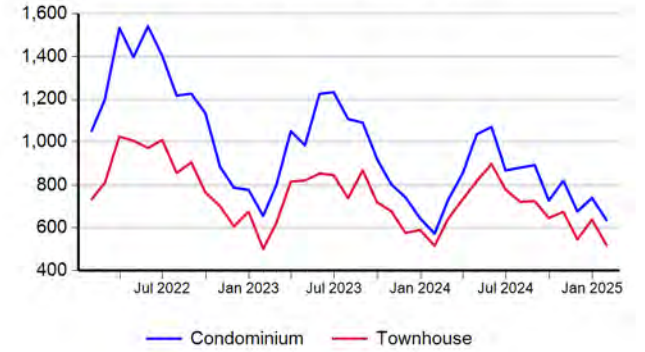
Single Family, New vs. Existing

Monthly Units Sold



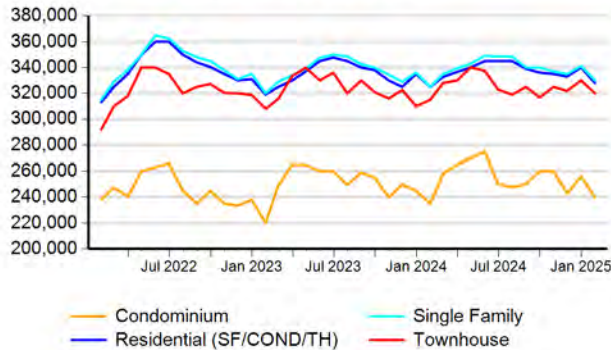
COND/TH, All (New and Existing)

Monthly Units Sold



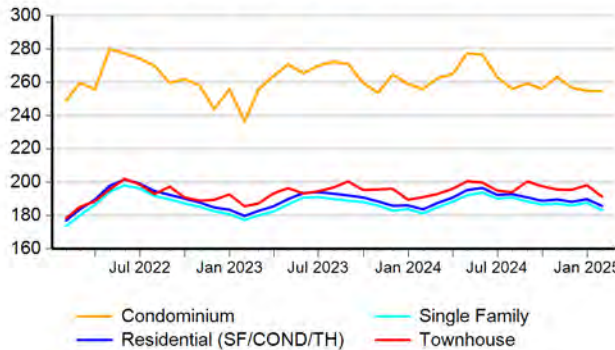
All (New and Existing) Construction

Median Sale Price



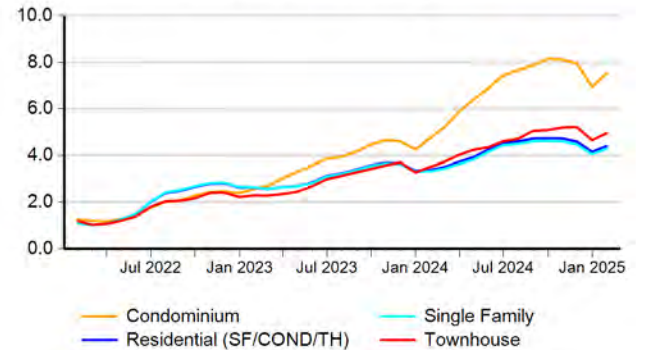
All (New and Existing) Construction

Average Close Price PSF



All (New and Existing) Construction

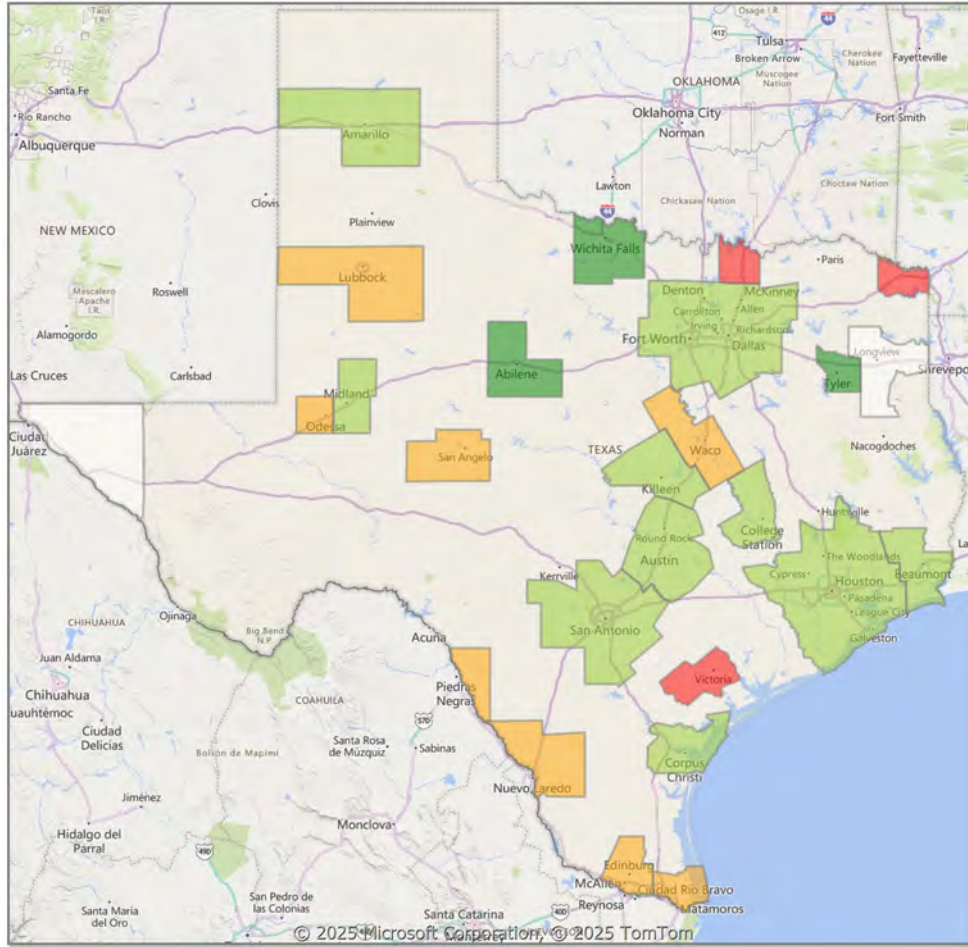
Months Inventory



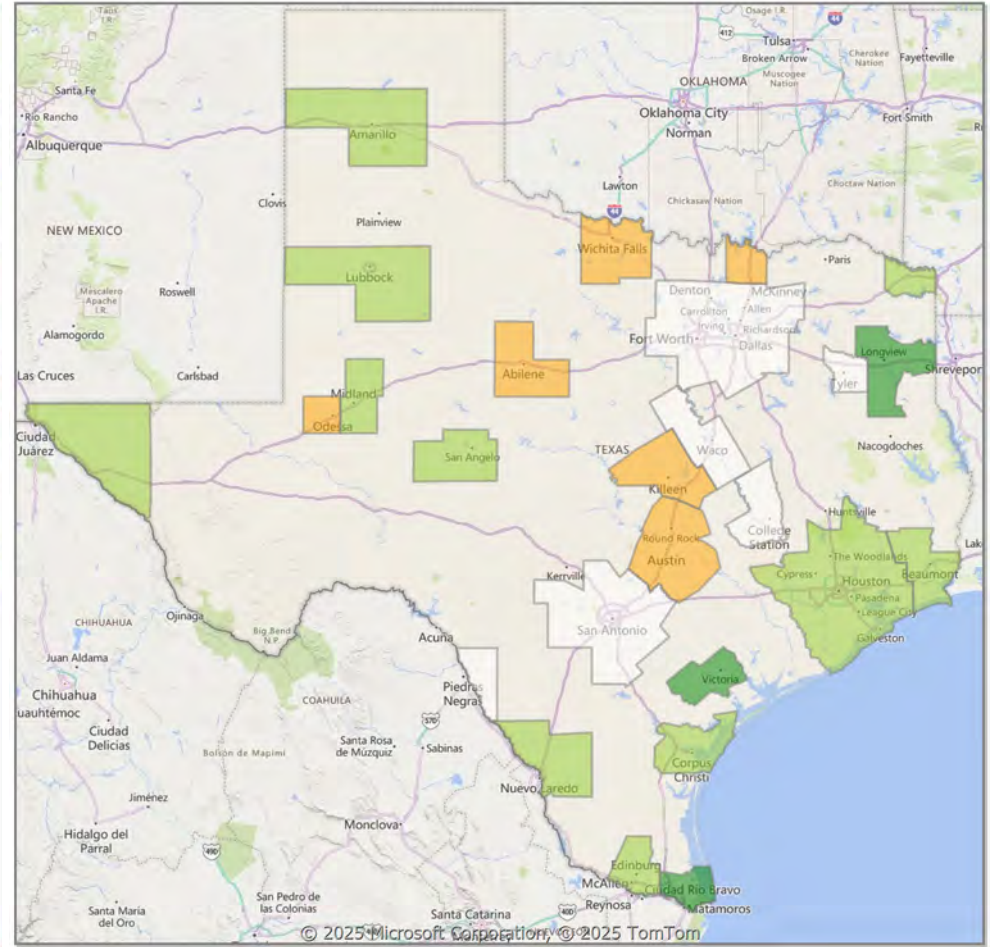
* Closed Sale counts for most recent 3 months are Preliminary.

Comparison By Metropolitan Statistical Area in Texas

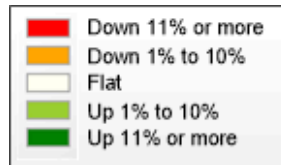
Residential* Closed Sales YoY Percentage Change



Residential* Avg Close Price Per SqFt YoY Percentage Change

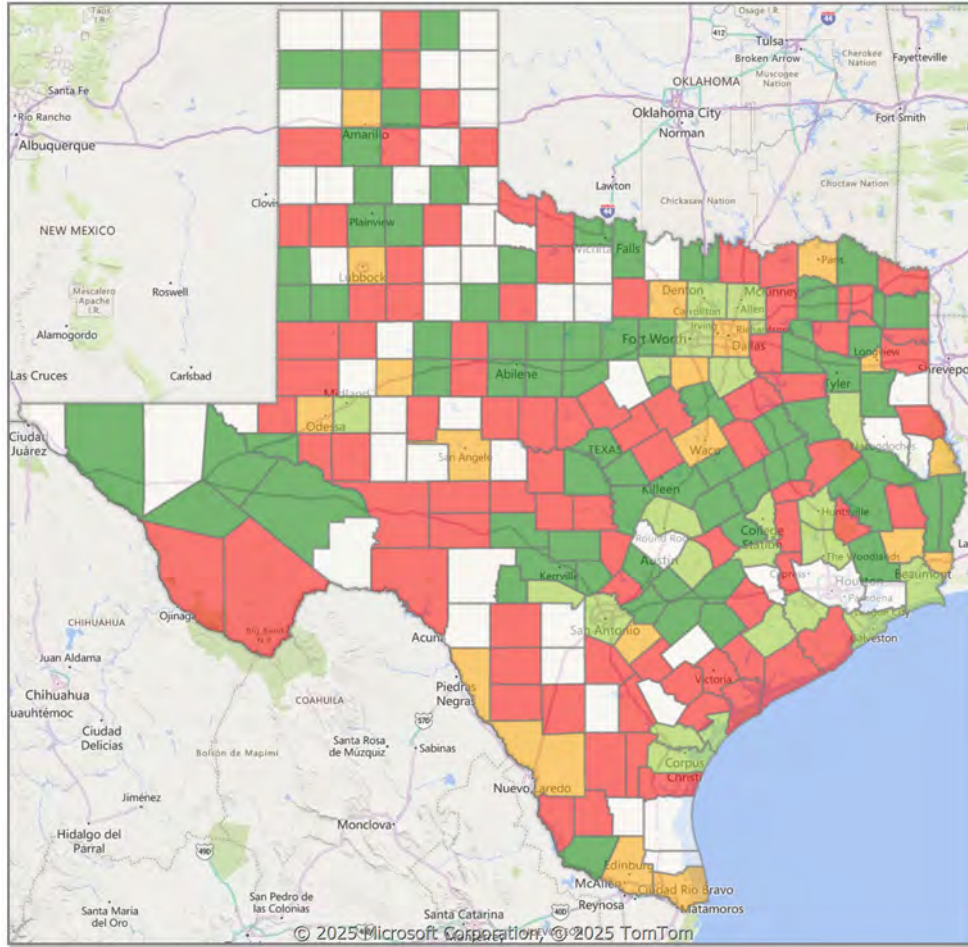


* Residential includes Single Family, Condominium and Townhouse.

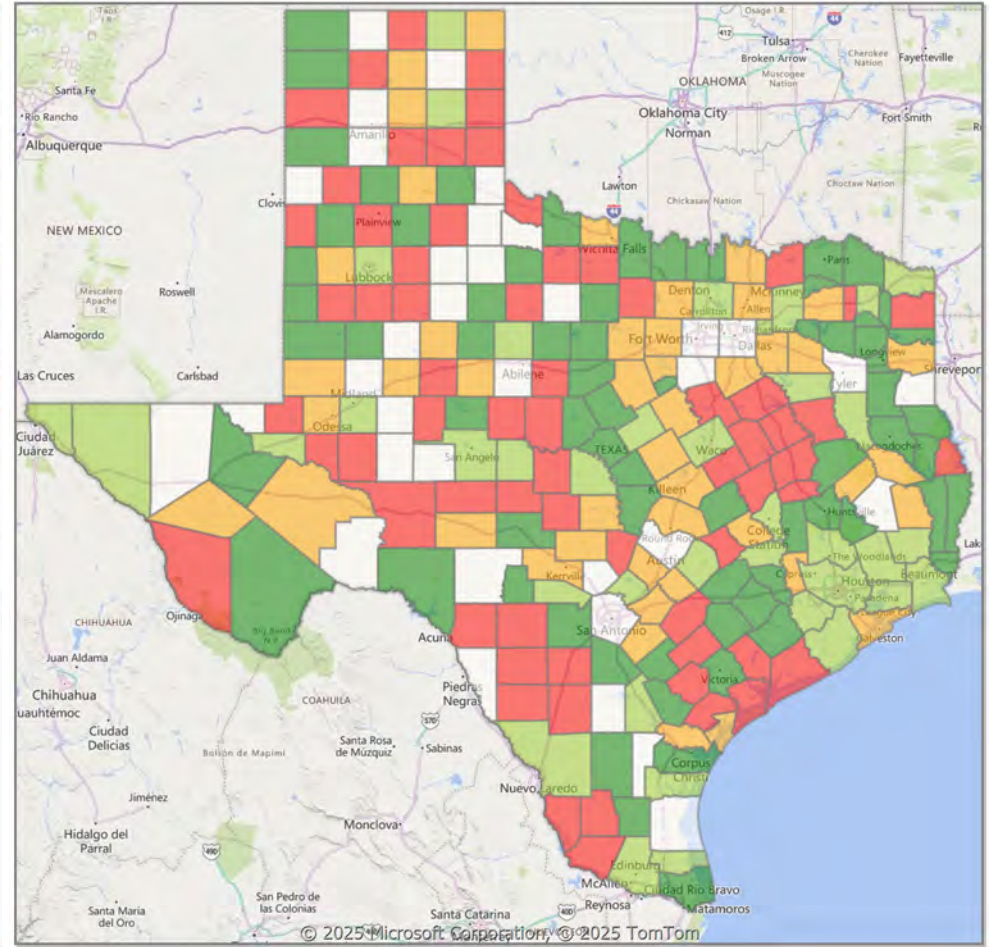


Comparison By County in Texas

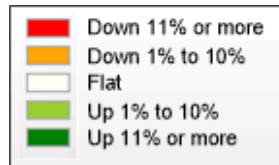
Residential* Closed Sales YoY Percentage Change



Residential* Avg Close Price Per SqFt YoY Percentage Change



* Residential includes Single Family, Condominium and Townhouse.



Market Analysis By Metropolitan Statistical Area: Lubbock

Property Type	Closed Sales*	YoY%	Dollar Volume	YoY%	Average Price	YoY%	Median Price	YoY%	Price/Sqft	YoY%	DOM	New Listings	Active Listings	Pending Sales	Months Inventory	Close To OLP
All(New and Existing)																
Residential (SF/COND/TH)	282	-6.6%	\$81,742,141	0.7%	\$289,866	7.9%	\$233,495	6.6%	\$137	4.4%	71	869	1,611	459	3.9	92.3%
YTD:	282	-6.6%	\$81,742,141	0.7%	\$289,866	7.9%	\$233,495	6.6%	\$137	4.4%	71	869	1,611	459		92.3%
Single Family	274	-8.7%	\$80,189,360	-0.8%	\$292,662	8.6%	\$234,625	7.1%	\$138	4.6%	70	856	1,558	451	3.9	92.3%
YTD:	274	-8.7%	\$80,189,360	-0.8%	\$292,662	8.6%	\$234,625	7.1%	\$138	4.6%	70	856	1,558	451		92.3%
Townhouse	6	500.0%	\$1,180,150	481.4%	\$196,692	-3.1%	\$173,950	-14.3%	\$126	1.0%	79	9	46	6	4.8	0.0%
YTD:	6	500.0%	\$1,180,150	481.4%	\$196,692	-3.1%	\$173,950	-14.3%	\$126	1.0%	79	9	46	6		0.0%
Condominium	2	100.0%	\$395,000	393.8%	\$197,500	146.9%	\$197,500	146.9%	\$133	13.5%	132	4	7	2	3.2	0.0%
YTD:	2	100.0%	\$395,000	393.8%	\$197,500	146.9%	\$197,500	146.9%	\$133	13.5%	132	4	7	2		0.0%

* Closed Sale counts for most recent 3 months are Preliminary.

Existing Home																
Residential (SF/COND/TH)	211	-1.9%	\$59,824,550	10.4%	\$283,529	12.5%	\$230,000	9.5%	\$130	7.8%	75	679	1,308	295	4.1	91.0%
YTD:	211	-1.9%	\$59,824,550	10.4%	\$283,529	12.5%	\$230,000	9.5%	\$130	7.8%	75	679	1,308	295		91.0%
Single Family	204	-4.2%	\$58,442,011	8.4%	\$286,480	13.2%	\$230,000	9.5%	\$130	7.8%	75	668	1,266	288	4.1	91.0%
YTD:	204	-4.2%	\$58,442,011	8.4%	\$286,480	13.2%	\$230,000	9.5%	\$130	7.8%	75	668	1,266	288		91.0%
Townhouse	5	400.0%	\$1,005,250	395.2%	\$201,050	-1.0%	\$173,000	-14.8%	\$127	1.5%	73	7	35	5	7.0	0.0%
YTD:	5	400.0%	\$1,005,250	395.2%	\$201,050	-1.0%	\$173,000	-14.8%	\$127	1.5%	73	7	35	5		0.0%
Condominium	2	100.0%	\$395,000	393.8%	\$197,500	146.9%	\$197,500	146.9%	\$133	13.5%	132	4	7	2	3.2	0.0%
YTD:	2	100.0%	\$395,000	393.8%	\$197,500	146.9%	\$197,500	146.9%	\$133	13.5%	132	4	7	2		0.0%

* Closed Sale counts for most recent 3 months are Preliminary.

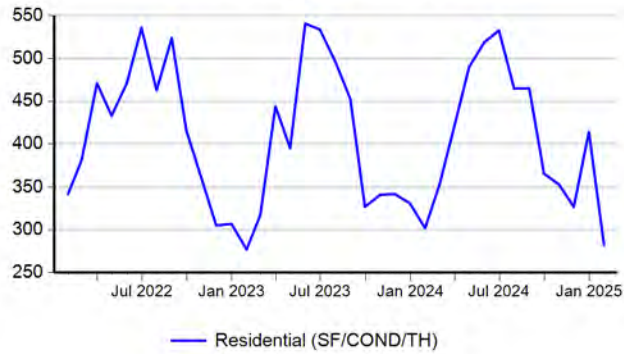
New Construction																
Residential (SF/COND/TH)	71	-18.4%	\$21,917,224	-18.6%	\$308,693	-0.3%	\$237,950	-4.6%	\$159	0.6%	58	190	303	164	3.0	97.6%
YTD:	71	-18.4%	\$21,917,224	-18.6%	\$308,693	-0.3%	\$237,950	-4.6%	\$159	0.6%	58	190	303	164		97.6%
Single Family	70	-19.5%	\$21,746,259	-19.3%	\$310,661	0.4%	\$240,970	-3.4%	\$160	0.9%	57	188	292	163	3.1	97.6%
YTD:	70	-19.5%	\$21,746,259	-19.3%	\$310,661	0.4%	\$240,970	-3.4%	\$160	0.9%	57	188	292	163		97.6%
Townhouse	1	100.0%	\$174,900	100.0%	\$174,900	100.0%	\$174,900	100.0%	\$122	100.0%	109	2	11	1	2.4	0.0%
YTD:	1	100.0%	\$174,900	100.0%	\$174,900	100.0%	\$174,900	100.0%	\$122	100.0%	109	2	11	1		0.0%
Condominium	-	0.0%	-	0.0%	-	0.0%	-	0.0%	-	0.0%	-	-	0	0	-	0.0%
YTD:	-	0.0%	-	0.0%	-	0.0%	-	0.0%	-	0.0%	-	0	0	0		0.0%

* Closed Sale counts for most recent 3 months are Preliminary.

Trend Analysis By Metropolitan Statistical Area: Lubbock

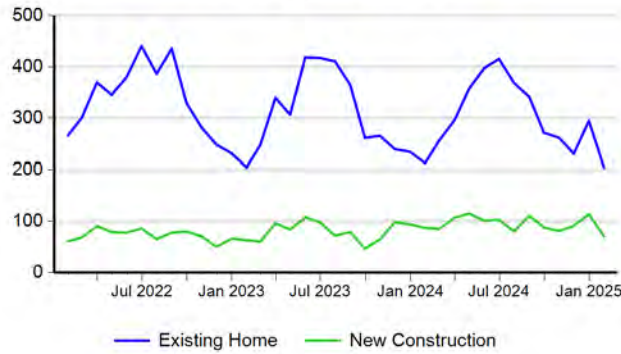
Residential, All (New and Existing)

Monthly Units Sold



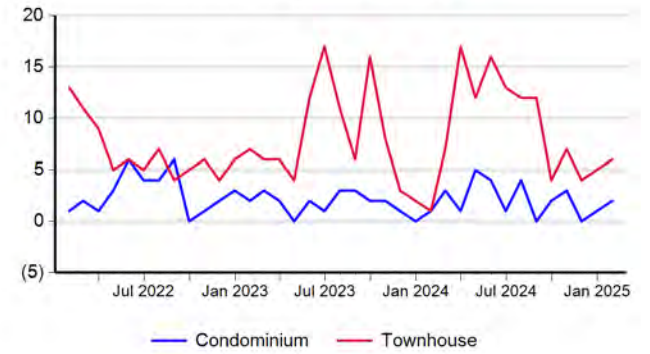
Single Family, New vs. Existing

Monthly Units Sold



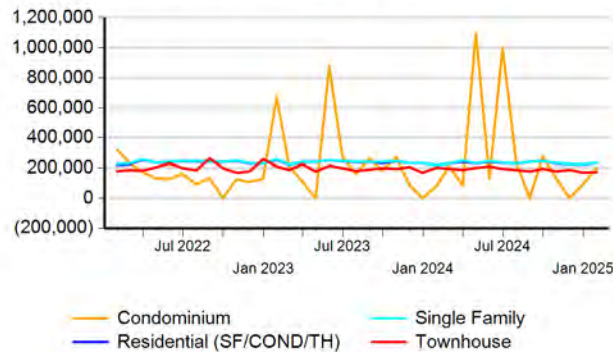
COND/TH, All (New and Existing)

Monthly Units Sold



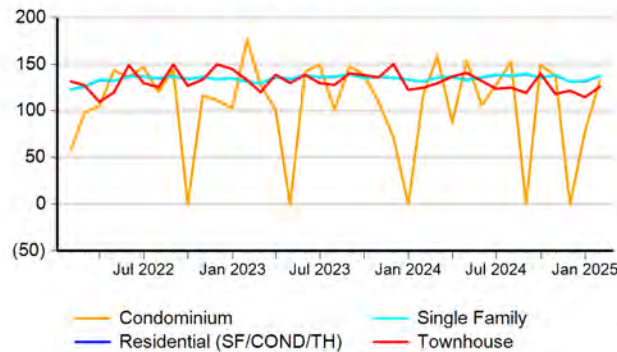
All (New and Existing) Construction

Median Sale Price



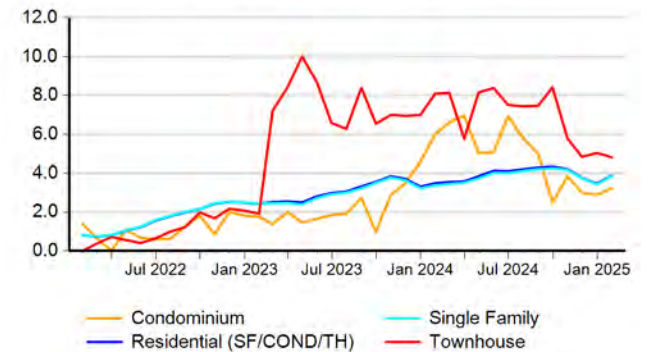
All (New and Existing) Construction

Average Close Price PSF



All (New and Existing) Construction

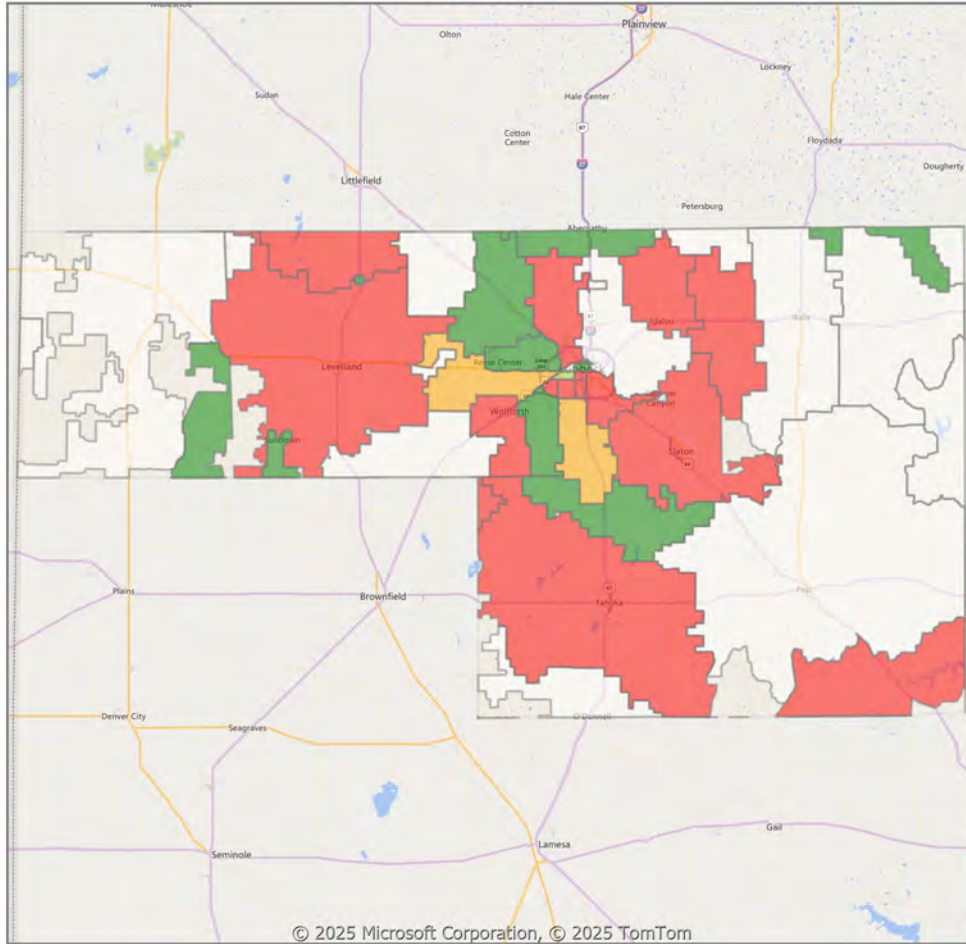
Months Inventory



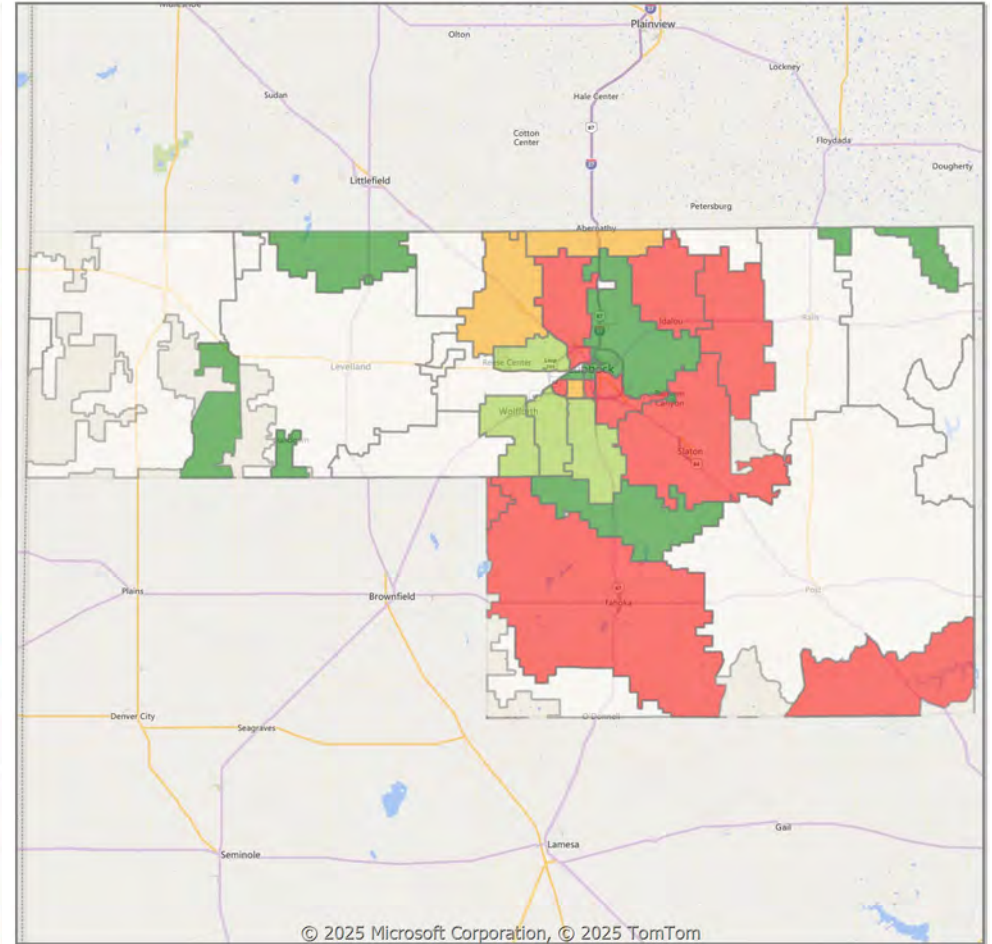
* Closed Sale counts for most recent 3 months are Preliminary.

Comparison By Zip Code* in Lubbock MSA

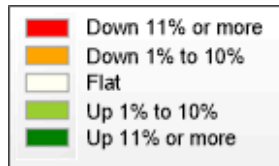
Residential Closed Sales
YoY Percentage Change**



Residential Avg Close Price Per SqFt
YoY Percentage Change**

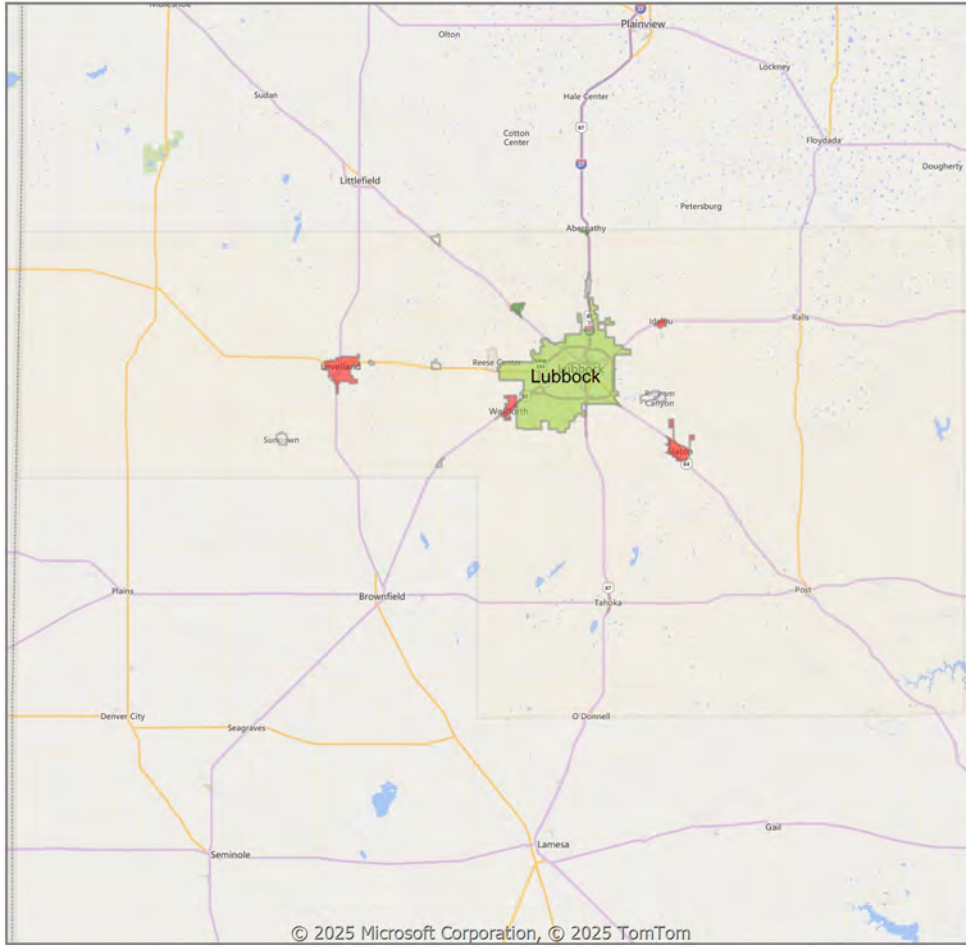


* US Census Zip Code Tabulation Area
** Residential includes Single Family, Condominium and Townhouse.

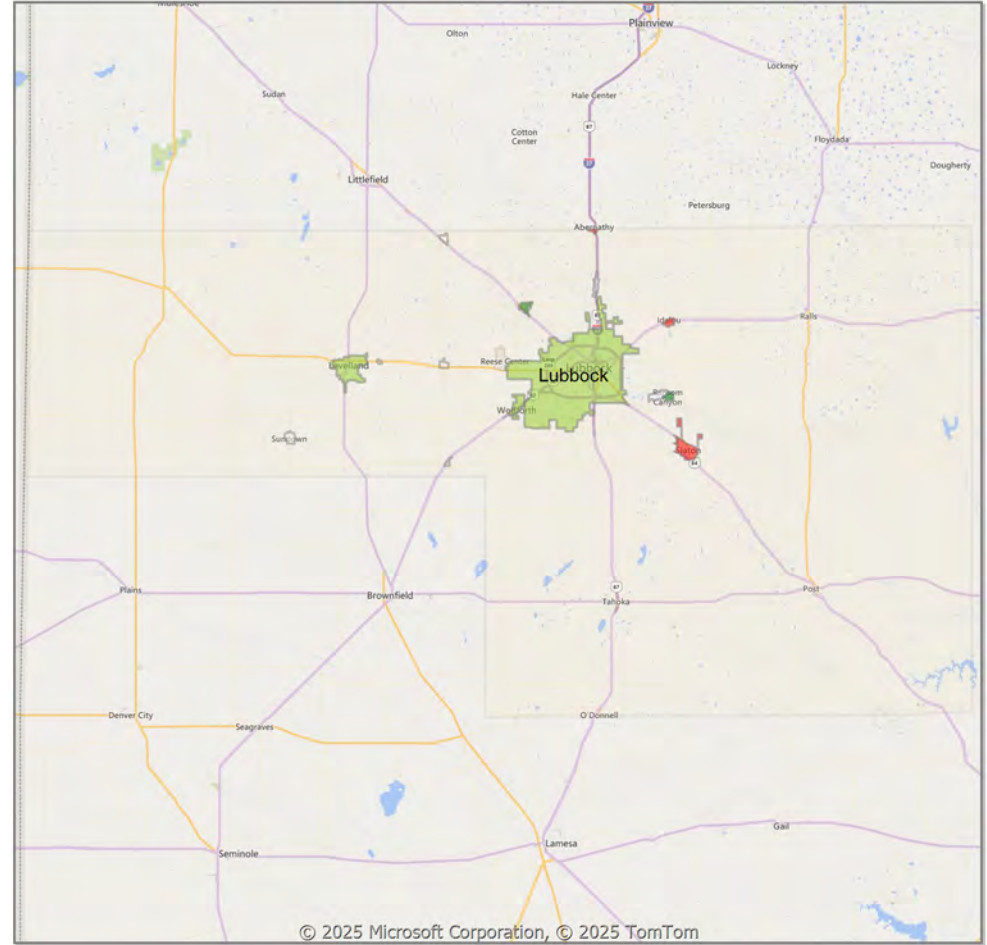


Comparison By Local Market Area* in Lubbock MSA

Residential Closed Sales
YoY Percentage Change**

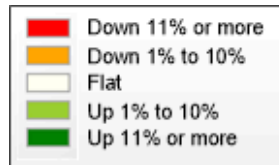


Residential Avg Close Price Per SqFt
YoY Percentage Change**



* Census Place Group

** Residential includes Single Family, Condominium and Townhouse.



Market Analysis By County: Hockley County

Property Type	Closed Sales*	YoY%	Dollar Volume	YoY%	Average Price	YoY%	Median Price	YoY%	Price/Sqft	YoY%	DOM	New Listings	Active Listings	Pending Sales	Months Inventory	Close To OLP
All(New and Existing)																
Residential (SF/COND/TH)	12	0.0%	\$2,675,800	-16.2%	\$222,983	-16.2%	\$207,450	-1.7%	\$106	-8.3%	159	29	62	22	3.5	91.5%
YTD:	12	0.0%	\$2,675,800	-16.2%	\$222,983	-16.2%	\$207,450	-1.7%	\$106	-8.3%	159	29	62	22		91.5%
Single Family	12	0.0%	\$2,675,800	-16.2%	\$222,983	-16.2%	\$207,450	-1.7%	\$106	-8.3%	159	29	62	22	3.5	91.5%
YTD:	12	0.0%	\$2,675,800	-16.2%	\$222,983	-16.2%	\$207,450	-1.7%	\$106	-8.3%	159	29	62	22		91.5%
Townhouse	-	0.0%	-	0.0%	-	0.0%	-	0.0%	-	0.0%	-	-	-	-	-	0.0%
YTD:	-	0.0%	-	0.0%	-	0.0%	-	0.0%	-	0.0%	-	-	-	-	-	0.0%
Condominium	-	0.0%	-	0.0%	-	0.0%	-	0.0%	-	0.0%	-	-	-	-	-	0.0%
YTD:	-	0.0%	-	0.0%	-	0.0%	-	0.0%	-	0.0%	-	-	-	-	-	0.0%
Existing Home																
Residential (SF/COND/TH)	11	22.2%	\$2,516,800	-1.8%	\$228,800	-19.7%	\$215,000	-0.9%	\$103	-3.8%	164	21	49	14	3.1	91.5%
YTD:	11	22.2%	\$2,516,800	-1.8%	\$228,800	-19.7%	\$215,000	-0.9%	\$103	-3.8%	164	21	49	14		91.5%
Single Family	11	22.2%	\$2,516,800	-1.8%	\$228,800	-19.7%	\$215,000	-0.9%	\$103	-3.8%	164	21	49	14	3.1	91.5%
YTD:	11	22.2%	\$2,516,800	-1.8%	\$228,800	-19.7%	\$215,000	-0.9%	\$103	-3.8%	164	21	49	14		91.5%
Townhouse	-	0.0%	-	0.0%	-	0.0%	-	0.0%	-	0.0%	-	-	-	-	-	0.0%
YTD:	-	0.0%	-	0.0%	-	0.0%	-	0.0%	-	0.0%	-	-	-	-	-	0.0%
Condominium	-	0.0%	-	0.0%	-	0.0%	-	0.0%	-	0.0%	-	-	-	-	-	0.0%
YTD:	-	0.0%	-	0.0%	-	0.0%	-	0.0%	-	0.0%	-	-	-	-	-	0.0%
New Construction																
Residential (SF/COND/TH)	1	-66.7%	\$159,000	-74.7%	\$159,000	-24.2%	\$159,000	-11.5%	\$143	0.0%	113	8	13	8	6.0	0.0%
YTD:	1	-66.7%	\$159,000	-74.7%	\$159,000	-24.2%	\$159,000	-11.5%	\$143	0.0%	113	8	13	8		0.0%
Single Family	1	-66.7%	\$159,000	-74.7%	\$159,000	-24.2%	\$159,000	-11.5%	\$143	0.0%	113	8	13	8	6.0	0.0%
YTD:	1	-66.7%	\$159,000	-74.7%	\$159,000	-24.2%	\$159,000	-11.5%	\$143	0.0%	113	8	13	8		0.0%
Townhouse	-	0.0%	-	0.0%	-	0.0%	-	0.0%	-	0.0%	-	-	-	-	-	0.0%
YTD:	-	0.0%	-	0.0%	-	0.0%	-	0.0%	-	0.0%	-	-	-	-	-	0.0%
Condominium	-	0.0%	-	0.0%	-	0.0%	-	0.0%	-	0.0%	-	-	-	-	-	0.0%
YTD:	-	0.0%	-	0.0%	-	0.0%	-	0.0%	-	0.0%	-	-	-	-	-	0.0%

* Closed Sale counts for most recent 3 months are Preliminary.

Market Analysis By County: Lubbock County

Property Type	Closed Sales*	YoY%	Dollar Volume	YoY%	Average Price	YoY%	Median Price	YoY%	Price/Sqft	YoY%	DOM	New Listings	Active Listings	Pending Sales	Months Inventory	Close To OLP
All(New and Existing)																
Residential (SF/COND/TH)	265	-4.7%	\$78,177,490	5.4%	\$295,009	10.5%	\$235,000	6.5%	\$140	5.9%	67	820	1,490	423	3.9	92.4%
YTD:	265	-4.7%	\$78,177,490	5.4%	\$295,009	10.5%	\$235,000	6.5%	\$140	5.9%	67	820	1,490	423		92.4%
Single Family	257	-6.9%	\$76,627,559	3.7%	\$298,162	11.3%	\$240,000	6.7%	\$140	6.1%	66	807	1,437	415	3.8	92.4%
YTD:	257	-6.9%	\$76,627,559	3.7%	\$298,162	11.3%	\$240,000	6.7%	\$140	6.1%	66	807	1,437	415		92.4%
Townhouse	6	500.0%	\$1,180,150	481.4%	\$196,692	-3.1%	\$173,950	-14.3%	\$126	1.0%	79	9	46	6	4.8	0.0%
YTD:	6	500.0%	\$1,180,150	481.4%	\$196,692	-3.1%	\$173,950	-14.3%	\$126	1.0%	79	9	46	6		0.0%
Condominium	2	100.0%	\$395,000	393.8%	\$197,500	146.9%	\$197,500	146.9%	\$133	13.5%	132	4	7	2	3.4	0.0%
YTD:	2	100.0%	\$395,000	393.8%	\$197,500	146.9%	\$197,500	146.9%	\$133	13.5%	132	4	7	2		0.0%
Existing Home																
Residential (SF/COND/TH)	195	-0.5%	\$56,412,342	14.9%	\$289,294	15.5%	\$233,000	11.0%	\$132	9.5%	71	638	1,203	267	4.2	91.0%
YTD:	195	-0.5%	\$56,412,342	14.9%	\$289,294	15.5%	\$233,000	11.0%	\$132	9.5%	71	638	1,203	267		91.0%
Single Family	188	-3.1%	\$55,032,690	12.8%	\$292,727	16.4%	\$237,500	12.0%	\$132	9.7%	70	627	1,161	260	4.1	91.0%
YTD:	188	-3.1%	\$55,032,690	12.8%	\$292,727	16.4%	\$237,500	12.0%	\$132	9.7%	70	627	1,161	260		91.0%
Townhouse	5	400.0%	\$1,005,250	395.2%	\$201,050	-1.0%	\$173,000	-14.8%	\$127	1.5%	73	7	35	5	7.0	0.0%
YTD:	5	400.0%	\$1,005,250	395.2%	\$201,050	-1.0%	\$173,000	-14.8%	\$127	1.5%	73	7	35	5		0.0%
Condominium	2	100.0%	\$395,000	393.8%	\$197,500	146.9%	\$197,500	146.9%	\$133	13.5%	132	4	7	2	3.4	0.0%
YTD:	2	100.0%	\$395,000	393.8%	\$197,500	146.9%	\$197,500	146.9%	\$133	13.5%	132	4	7	2		0.0%
New Construction																
Residential (SF/COND/TH)	70	-14.6%	\$21,762,626	-13.3%	\$310,895	1.6%	\$240,970	-3.1%	\$160	1.0%	57	182	287	156	3.0	97.6%
YTD:	70	-14.6%	\$21,762,626	-13.3%	\$310,895	1.6%	\$240,970	-3.1%	\$160	1.0%	57	182	287	156		97.6%
Single Family	69	-15.9%	\$21,591,786	-14.0%	\$312,924	2.2%	\$243,990	-1.9%	\$160	1.3%	56	180	276	155	3.0	97.6%
YTD:	69	-15.9%	\$21,591,786	-14.0%	\$312,924	2.2%	\$243,990	-1.9%	\$160	1.3%	56	180	276	155		97.6%
Townhouse	1	100.0%	\$174,900	100.0%	\$174,900	100.0%	\$174,900	100.0%	\$122	100.0%	109	2	11	1	2.4	0.0%
YTD:	1	100.0%	\$174,900	100.0%	\$174,900	100.0%	\$174,900	100.0%	\$122	100.0%	109	2	11	1		0.0%
Condominium	-	0.0%	-	0.0%	-	0.0%	-	0.0%	-	0.0%	-	-	-	-	-	0.0%
YTD:	-	0.0%	-	0.0%	-	0.0%	-	0.0%	-	0.0%	-	-	-	-		0.0%

* Closed Sale counts for most recent 3 months are Preliminary.

Trend Analysis By County: Hockley County

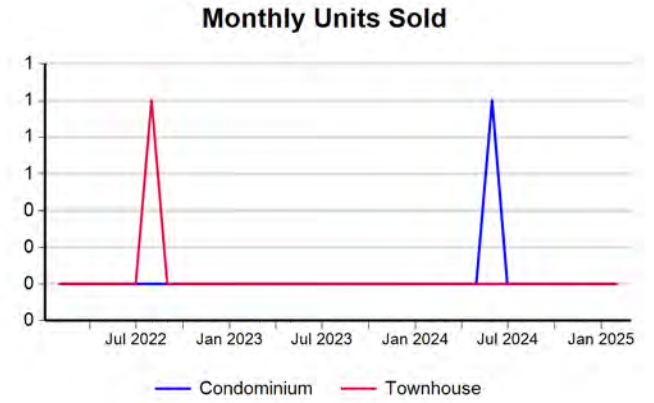
Residential, All (New and Existing)



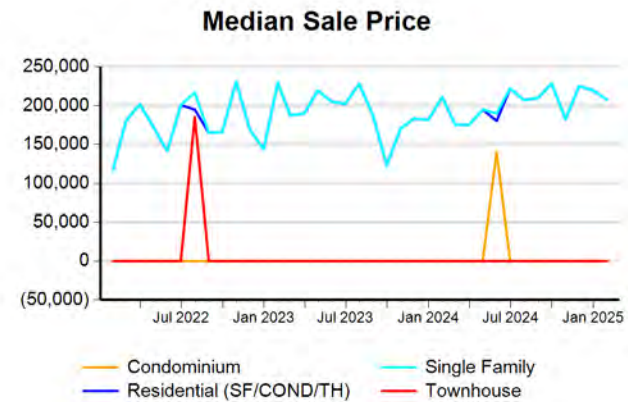
Single Family, New vs. Existing



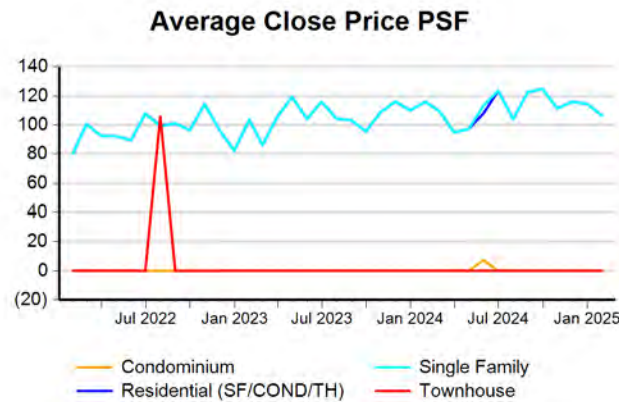
COND/TH, All (New and Existing)



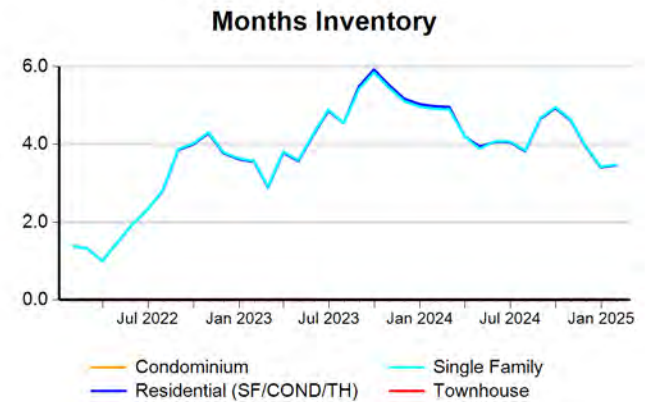
All (New and Existing) Construction



All (New and Existing) Construction



All (New and Existing) Construction

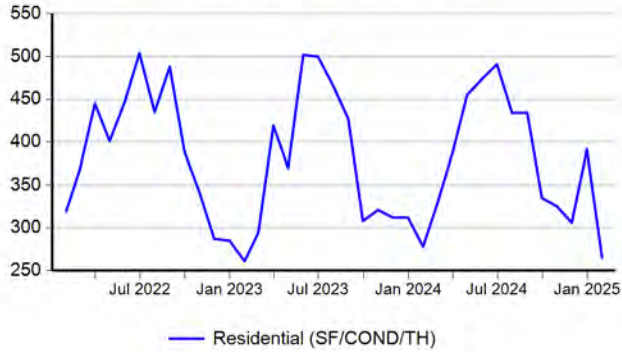


* Closed Sale counts for most recent 3 months are Preliminary.

Trend Analysis By County: Lubbock County

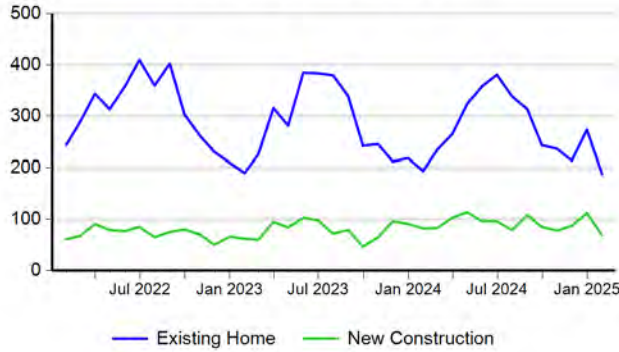
Residential, All (New and Existing)

Monthly Units Sold



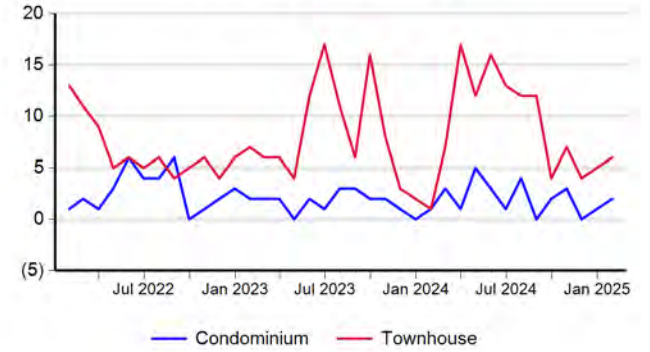
Single Family, New vs. Existing

Monthly Units Sold



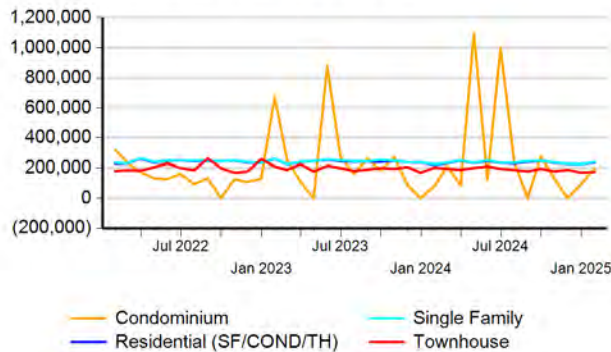
COND/TH, All (New and Existing)

Monthly Units Sold



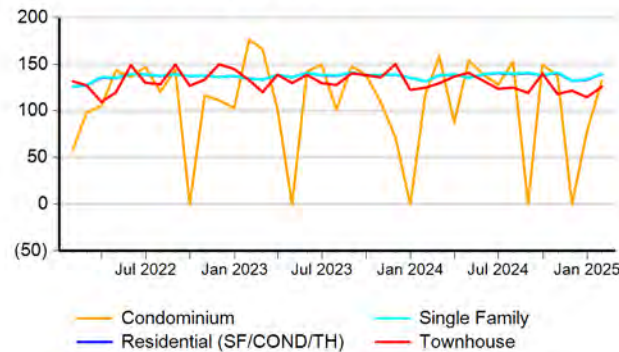
All (New and Existing) Construction

Median Sale Price



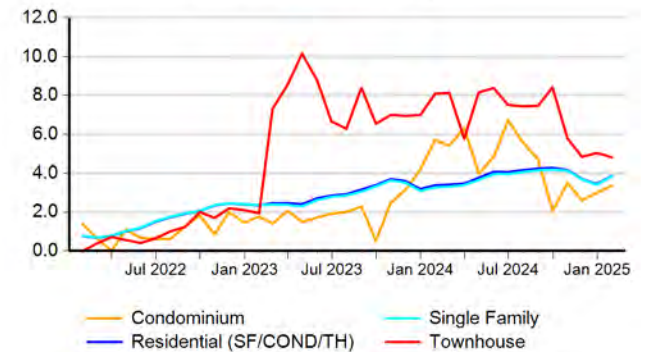
All (New and Existing) Construction

Average Close Price PSF



All (New and Existing) Construction

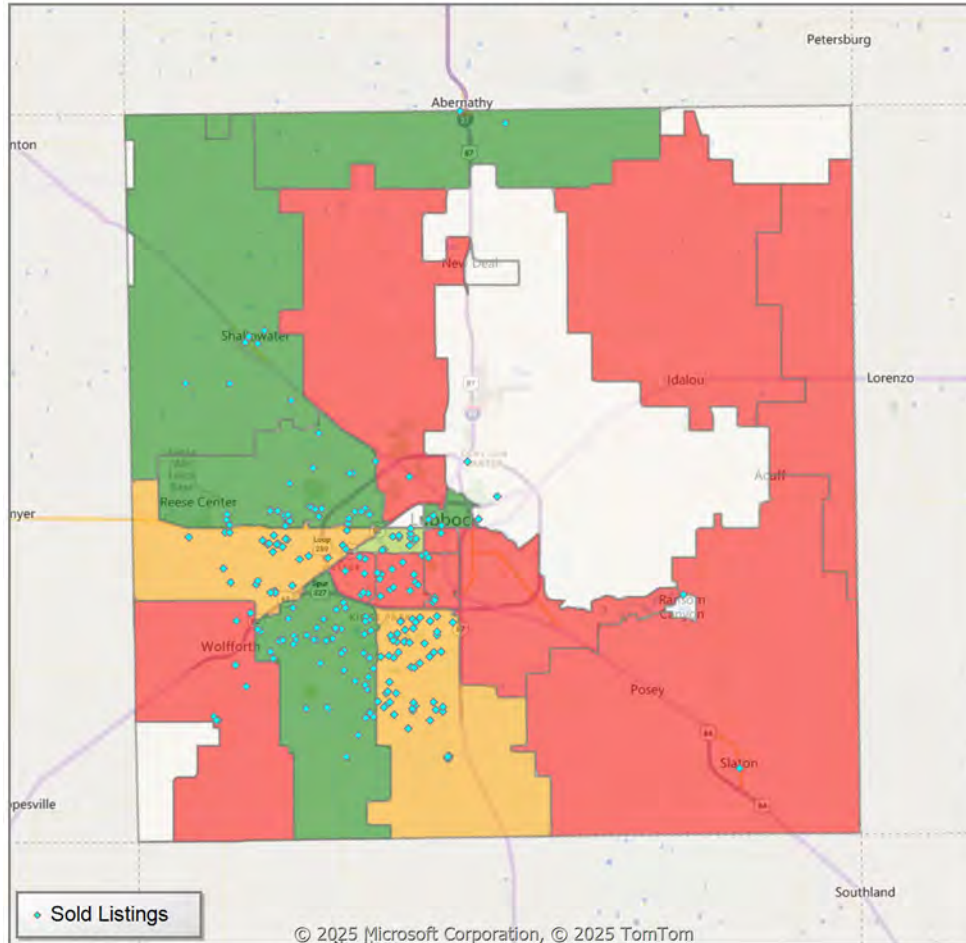
Months Inventory



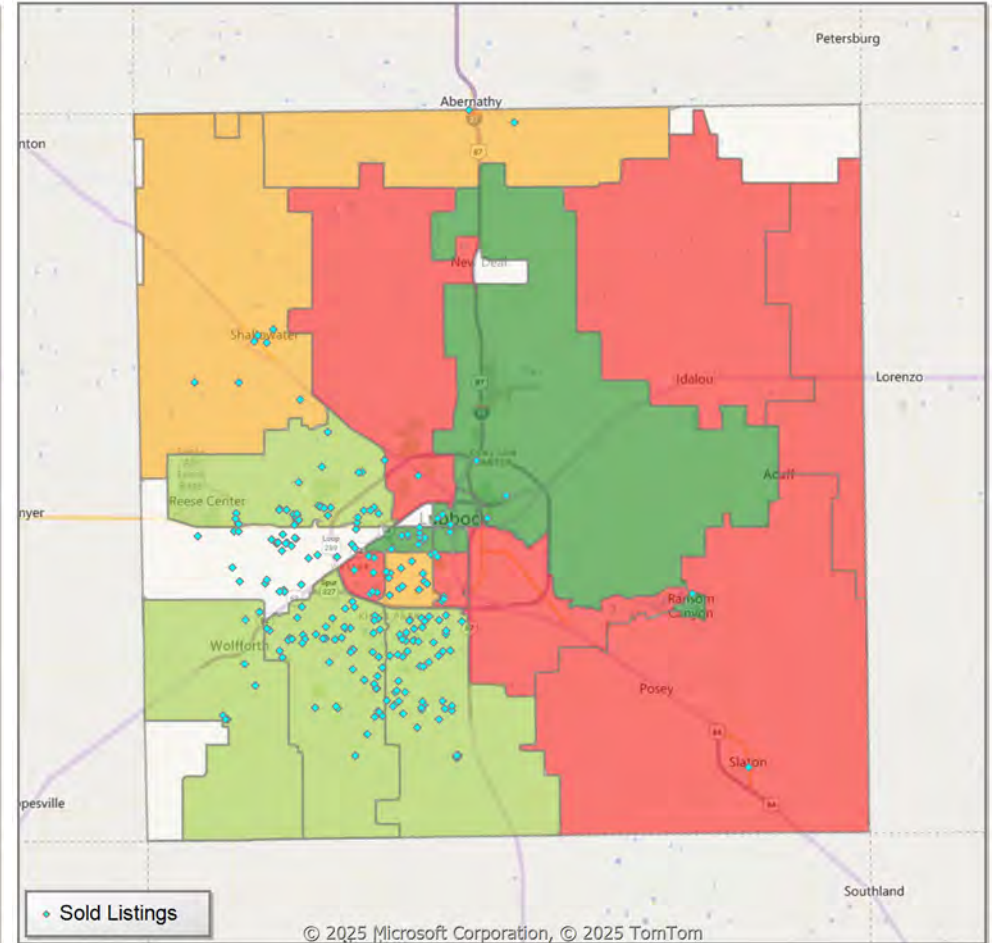
* Closed Sale counts for most recent 3 months are Preliminary.

Comparison By Zip Code* in Lubbock County

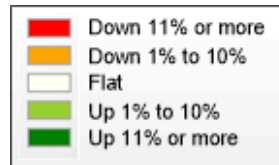
Residential Closed Sales
YoY Percentage Change**



Residential Avg Close Price Per SqFt
YoY Percentage Change**

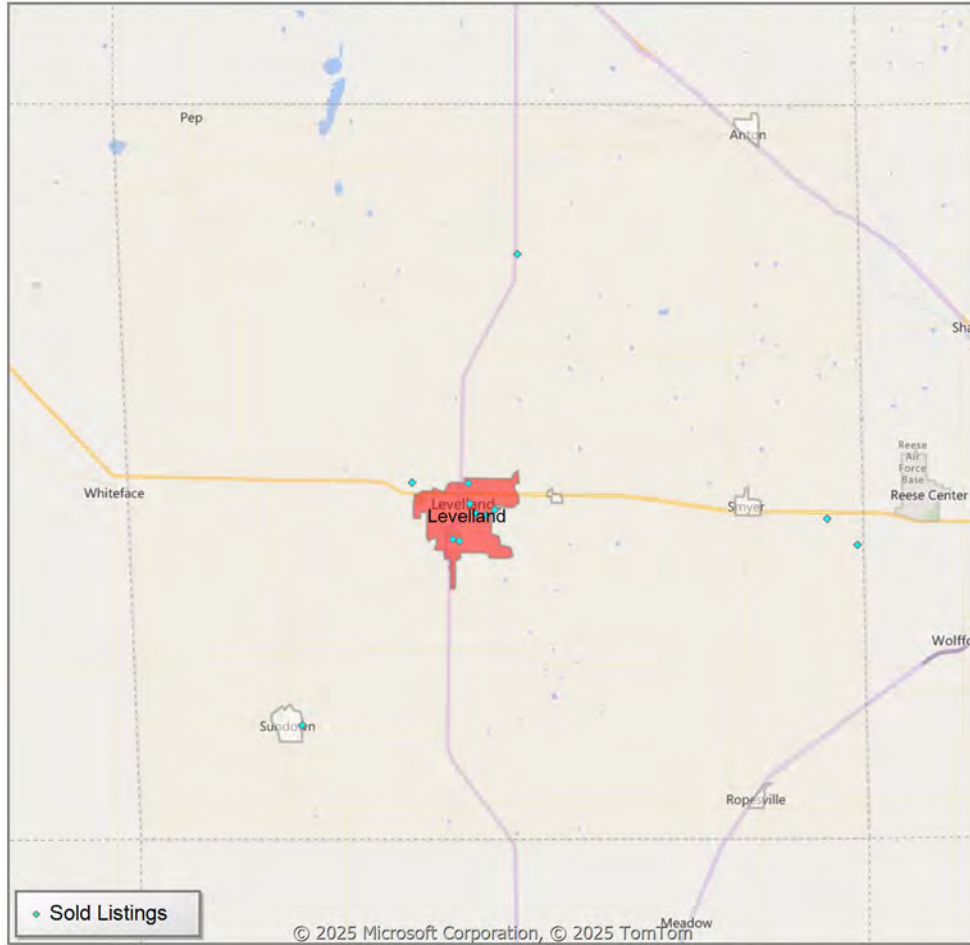


* US Census Zip Code Tabulation Area
** Residential includes Single Family, Condominium and Townhouse.

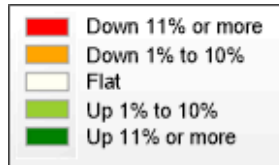
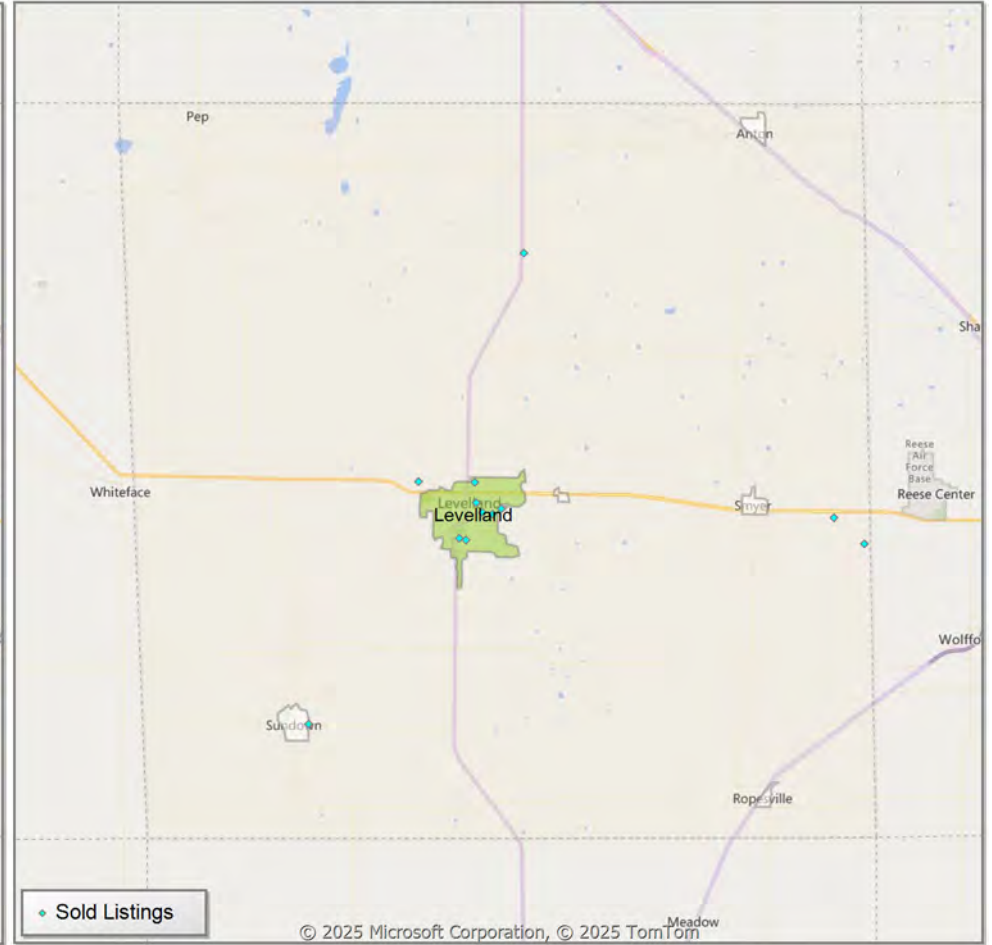


Comparison By Local Market Area* in Hockley County

Residential Closed Sales
YoY Percentage Change**



Residential Avg Close Price Per SqFt
YoY Percentage Change**

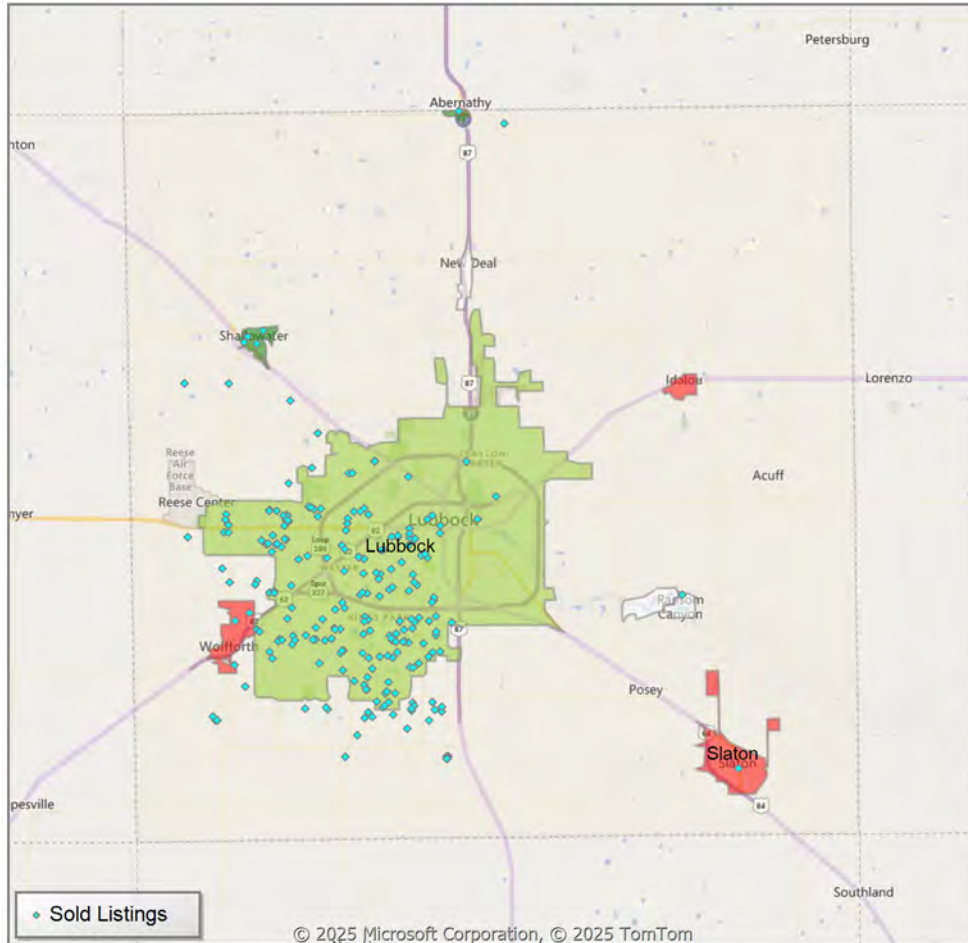


* Census Place Group

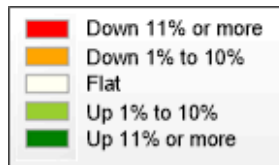
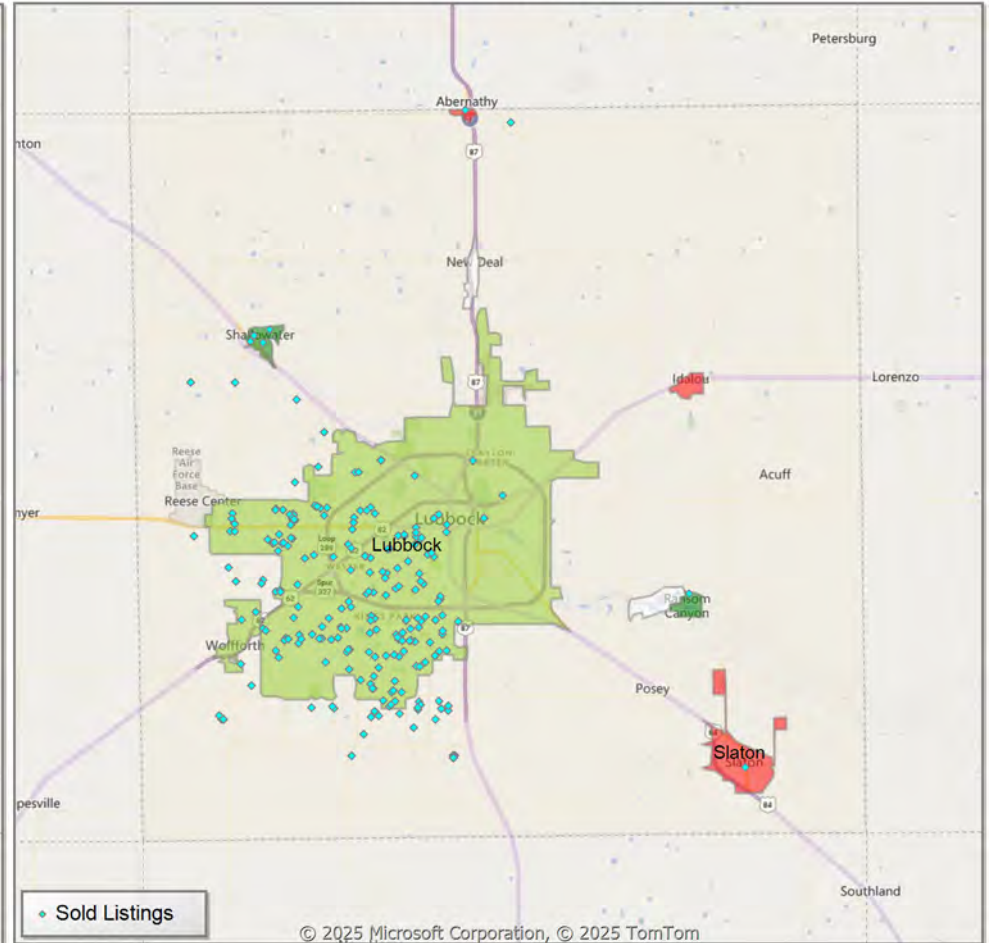
** Residential includes Single Family, Condominium and Townhouse.

Comparison By Local Market Area* in Lubbock County

Residential Closed Sales
YoY Percentage Change**



Residential Avg Close Price Per SqFt
YoY Percentage Change**



* Census Place Group

** Residential includes Single Family, Condominium and Townhouse.

Market Analysis By Local Market Area*: Abernathy

Property Type	Closed Sales**	YoY%	Dollar Volume	YoY%	Average Price	YoY%	Median Price	YoY%	Price/Sqft	YoY%	DOM	New Listings	Active Listings	Pending Sales	Months Inventory	Close To OLP
All(New and Existing)																
Residential (SF/COND/TH)	2	100.0%	\$267,600	54.7%	\$133,800	-22.7%	\$133,800	-22.7%	\$84	-35.6%	34	-	9	2	5.4	0.0%
YTD:	2	100.0%	\$267,600	54.7%	\$133,800	-22.7%	\$133,800	-22.7%	\$84	-35.6%	34	-	9	2		0.0%
Single Family	2	100.0%	\$267,600	54.7%	\$133,800	-22.7%	\$133,800	-22.7%	\$84	-35.6%	34	-	9	2	5.4	0.0%
YTD:	2	100.0%	\$267,600	54.7%	\$133,800	-22.7%	\$133,800	-22.7%	\$84	-35.6%	34	-	9	2		0.0%
Townhouse	-	0.0%	-	0.0%	-	0.0%	-	0.0%	-	0.0%	-	-	-	-	-	0.0%
YTD:	-	0.0%	-	0.0%	-	0.0%	-	0.0%	-	0.0%	-	-	-	-	-	0.0%
Condominium	-	0.0%	-	0.0%	-	0.0%	-	0.0%	-	0.0%	-	-	-	-	-	0.0%
YTD:	-	0.0%	-	0.0%	-	0.0%	-	0.0%	-	0.0%	-	-	-	-	-	0.0%
Existing Home																
Residential (SF/COND/TH)	2	100.0%	\$267,600	54.7%	\$133,800	-22.7%	\$133,800	-22.7%	\$84	-35.6%	34	-	9	2	5.4	0.0%
YTD:	2	100.0%	\$267,600	54.7%	\$133,800	-22.7%	\$133,800	-22.7%	\$84	-35.6%	34	-	9	2		0.0%
Single Family	2	100.0%	\$267,600	54.7%	\$133,800	-22.7%	\$133,800	-22.7%	\$84	-35.6%	34	-	9	2	5.4	0.0%
YTD:	2	100.0%	\$267,600	54.7%	\$133,800	-22.7%	\$133,800	-22.7%	\$84	-35.6%	34	-	9	2		0.0%
Townhouse	-	0.0%	-	0.0%	-	0.0%	-	0.0%	-	0.0%	-	-	-	-	-	0.0%
YTD:	-	0.0%	-	0.0%	-	0.0%	-	0.0%	-	0.0%	-	-	-	-	-	0.0%
Condominium	-	0.0%	-	0.0%	-	0.0%	-	0.0%	-	0.0%	-	-	-	-	-	0.0%
YTD:	-	0.0%	-	0.0%	-	0.0%	-	0.0%	-	0.0%	-	-	-	-	-	0.0%
New Construction																
Residential (SF/COND/TH)	-	0.0%	-	0.0%	-	0.0%	-	0.0%	-	0.0%	-	-	-	-	-	0.0%
YTD:	-	0.0%	-	0.0%	-	0.0%	-	0.0%	-	0.0%	-	-	-	-	-	0.0%
Single Family	-	0.0%	-	0.0%	-	0.0%	-	0.0%	-	0.0%	-	-	-	-	-	0.0%
YTD:	-	0.0%	-	0.0%	-	0.0%	-	0.0%	-	0.0%	-	-	-	-	-	0.0%
Townhouse	-	0.0%	-	0.0%	-	0.0%	-	0.0%	-	0.0%	-	-	-	-	-	0.0%
YTD:	-	0.0%	-	0.0%	-	0.0%	-	0.0%	-	0.0%	-	-	-	-	-	0.0%
Condominium	-	0.0%	-	0.0%	-	0.0%	-	0.0%	-	0.0%	-	-	-	-	-	0.0%
YTD:	-	0.0%	-	0.0%	-	0.0%	-	0.0%	-	0.0%	-	-	-	-	-	0.0%

* Local Market Area Code: 2; Type: Census Place Group
 ** Closed Sale counts for most recent 3 months are Preliminary.

Market Analysis By Local Market Area*: Anton

Property Type	Closed Sales**	YoY%	Dollar Volume	YoY%	Average Price	YoY%	Median Price	YoY%	Price/Sqft	YoY%	DOM	New Listings	Active Listings	Pending Sales	Months Inventory	Close To OLP
All(New and Existing)																
Residential (SF/COND/TH)	-	0.0%	-	0.0%	-	0.0%	-	0.0%	-	0.0%	-	1	5	2	12.0	0.0%
YTD:	-	0.0%	-	0.0%	-	0.0%	-	0.0%	-	0.0%	-	1	5	2		0.0%
Single Family	-	0.0%	-	0.0%	-	0.0%	-	0.0%	-	0.0%	-	1	5	2	12.0	0.0%
YTD:	-	0.0%	-	0.0%	-	0.0%	-	0.0%	-	0.0%	-	1	5	2		0.0%
Townhouse	-	0.0%	-	0.0%	-	0.0%	-	0.0%	-	0.0%	-	-	-	-	-	0.0%
YTD:	-	0.0%	-	0.0%	-	0.0%	-	0.0%	-	0.0%	-	-	-	-	-	0.0%
Condominium	-	0.0%	-	0.0%	-	0.0%	-	0.0%	-	0.0%	-	-	-	-	-	0.0%
YTD:	-	0.0%	-	0.0%	-	0.0%	-	0.0%	-	0.0%	-	-	-	-	-	0.0%
Existing Home																
Residential (SF/COND/TH)	-	0.0%	-	0.0%	-	0.0%	-	0.0%	-	0.0%	-	1	5	2	12.0	0.0%
YTD:	-	0.0%	-	0.0%	-	0.0%	-	0.0%	-	0.0%	-	1	5	2		0.0%
Single Family	-	0.0%	-	0.0%	-	0.0%	-	0.0%	-	0.0%	-	1	5	2	12.0	0.0%
YTD:	-	0.0%	-	0.0%	-	0.0%	-	0.0%	-	0.0%	-	1	5	2		0.0%
Townhouse	-	0.0%	-	0.0%	-	0.0%	-	0.0%	-	0.0%	-	-	-	-	-	0.0%
YTD:	-	0.0%	-	0.0%	-	0.0%	-	0.0%	-	0.0%	-	-	-	-	-	0.0%
Condominium	-	0.0%	-	0.0%	-	0.0%	-	0.0%	-	0.0%	-	-	-	-	-	0.0%
YTD:	-	0.0%	-	0.0%	-	0.0%	-	0.0%	-	0.0%	-	-	-	-	-	0.0%
New Construction																
Residential (SF/COND/TH)	-	0.0%	-	0.0%	-	0.0%	-	0.0%	-	0.0%	-	-	-	-	-	0.0%
YTD:	-	0.0%	-	0.0%	-	0.0%	-	0.0%	-	0.0%	-	-	-	-	-	0.0%
Single Family	-	0.0%	-	0.0%	-	0.0%	-	0.0%	-	0.0%	-	-	-	-	-	0.0%
YTD:	-	0.0%	-	0.0%	-	0.0%	-	0.0%	-	0.0%	-	-	-	-	-	0.0%
Townhouse	-	0.0%	-	0.0%	-	0.0%	-	0.0%	-	0.0%	-	-	-	-	-	0.0%
YTD:	-	0.0%	-	0.0%	-	0.0%	-	0.0%	-	0.0%	-	-	-	-	-	0.0%
Condominium	-	0.0%	-	0.0%	-	0.0%	-	0.0%	-	0.0%	-	-	-	-	-	0.0%
YTD:	-	0.0%	-	0.0%	-	0.0%	-	0.0%	-	0.0%	-	-	-	-	-	0.0%

* Local Market Area Code: 1014; Type: Census Place Group
 ** Closed Sale counts for most recent 3 months are Preliminary.

Market Analysis By Local Market Area*: Buffalo Springs

Property Type	Closed Sales**	YoY%	Dollar Volume	YoY%	Average Price	YoY%	Median Price	YoY%	Price/Sqft	YoY%	DOM	New Listings	Active Listings	Pending Sales	Months Inventory	Close To OLP
All(New and Existing)																
Residential (SF/COND/TH)	-	0.0%	-	0.0%	-	0.0%	-	0.0%	-	0.0%	-	2	10	-	7.5	0.0%
YTD:	-	0.0%	-	0.0%	-	0.0%	-	0.0%	-	0.0%	-	2	10	-		0.0%
Single Family	-	0.0%	-	0.0%	-	0.0%	-	0.0%	-	0.0%	-	2	10	-	7.5	0.0%
YTD:	-	0.0%	-	0.0%	-	0.0%	-	0.0%	-	0.0%	-	2	10	-		0.0%
Townhouse	-	0.0%	-	0.0%	-	0.0%	-	0.0%	-	0.0%	-	-	-	-	-	0.0%
YTD:	-	0.0%	-	0.0%	-	0.0%	-	0.0%	-	0.0%	-	-	-	-	-	0.0%
Condominium	-	0.0%	-	0.0%	-	0.0%	-	0.0%	-	0.0%	-	-	-	-	-	0.0%
YTD:	-	0.0%	-	0.0%	-	0.0%	-	0.0%	-	0.0%	-	-	-	-	-	0.0%
Existing Home																
Residential (SF/COND/TH)	-	0.0%	-	0.0%	-	0.0%	-	0.0%	-	0.0%	-	2	10	-	7.5	0.0%
YTD:	-	0.0%	-	0.0%	-	0.0%	-	0.0%	-	0.0%	-	2	10	-		0.0%
Single Family	-	0.0%	-	0.0%	-	0.0%	-	0.0%	-	0.0%	-	2	10	-	7.5	0.0%
YTD:	-	0.0%	-	0.0%	-	0.0%	-	0.0%	-	0.0%	-	2	10	-		0.0%
Townhouse	-	0.0%	-	0.0%	-	0.0%	-	0.0%	-	0.0%	-	-	-	-	-	0.0%
YTD:	-	0.0%	-	0.0%	-	0.0%	-	0.0%	-	0.0%	-	-	-	-	-	0.0%
Condominium	-	0.0%	-	0.0%	-	0.0%	-	0.0%	-	0.0%	-	-	-	-	-	0.0%
YTD:	-	0.0%	-	0.0%	-	0.0%	-	0.0%	-	0.0%	-	-	-	-	-	0.0%
New Construction																
Residential (SF/COND/TH)	-	0.0%	-	0.0%	-	0.0%	-	0.0%	-	0.0%	-	-	-	-	-	0.0%
YTD:	-	0.0%	-	0.0%	-	0.0%	-	0.0%	-	0.0%	-	-	-	-	-	0.0%
Single Family	-	0.0%	-	0.0%	-	0.0%	-	0.0%	-	0.0%	-	-	-	-	-	0.0%
YTD:	-	0.0%	-	0.0%	-	0.0%	-	0.0%	-	0.0%	-	-	-	-	-	0.0%
Townhouse	-	0.0%	-	0.0%	-	0.0%	-	0.0%	-	0.0%	-	-	-	-	-	0.0%
YTD:	-	0.0%	-	0.0%	-	0.0%	-	0.0%	-	0.0%	-	-	-	-	-	0.0%
Condominium	-	0.0%	-	0.0%	-	0.0%	-	0.0%	-	0.0%	-	-	-	-	-	0.0%
YTD:	-	0.0%	-	0.0%	-	0.0%	-	0.0%	-	0.0%	-	-	-	-	-	0.0%

* Local Market Area Code: 135; Type: Census Place Group
 ** Closed Sale counts for most recent 3 months are Preliminary.

Market Analysis By Local Market Area*: Idalou

Property Type	Closed Sales**	YoY%	Dollar Volume	YoY%	Average Price	YoY%	Median Price	YoY%	Price/Sqft	YoY%	DOM	New Listings	Active Listings	Pending Sales	Months Inventory	Close To OLP
All(New and Existing)																
Residential (SF/COND/TH)	-	-100.0%	-	-100.0%	-	-100.0%	-	-100.0%	-	-100.0%	-	-	6	1	4.2	0.0%
YTD:	-	-100.0%	-	-100.0%	-	-100.0%	-	-100.0%	-	-100.0%	-	-	6	1		0.0%
Single Family	-	-100.0%	-	-100.0%	-	-100.0%	-	-100.0%	-	-100.0%	-	-	6	1	4.2	0.0%
YTD:	-	-100.0%	-	-100.0%	-	-100.0%	-	-100.0%	-	-100.0%	-	-	6	1		0.0%
Townhouse	-	0.0%	-	0.0%	-	0.0%	-	0.0%	-	0.0%	-	-	-	-	-	0.0%
YTD:	-	0.0%	-	0.0%	-	0.0%	-	0.0%	-	0.0%	-	-	-	-	-	0.0%
Condominium	-	0.0%	-	0.0%	-	0.0%	-	0.0%	-	0.0%	-	-	-	-	-	0.0%
YTD:	-	0.0%	-	0.0%	-	0.0%	-	0.0%	-	0.0%	-	-	-	-	-	0.0%
Existing Home																
Residential (SF/COND/TH)	-	-100.0%	-	-100.0%	-	-100.0%	-	-100.0%	-	-100.0%	-	-	6	1	4.2	0.0%
YTD:	-	-100.0%	-	-100.0%	-	-100.0%	-	-100.0%	-	-100.0%	-	-	6	1		0.0%
Single Family	-	-100.0%	-	-100.0%	-	-100.0%	-	-100.0%	-	-100.0%	-	-	6	1	4.2	0.0%
YTD:	-	-100.0%	-	-100.0%	-	-100.0%	-	-100.0%	-	-100.0%	-	-	6	1		0.0%
Townhouse	-	0.0%	-	0.0%	-	0.0%	-	0.0%	-	0.0%	-	-	-	-	-	0.0%
YTD:	-	0.0%	-	0.0%	-	0.0%	-	0.0%	-	0.0%	-	-	-	-	-	0.0%
Condominium	-	0.0%	-	0.0%	-	0.0%	-	0.0%	-	0.0%	-	-	-	-	-	0.0%
YTD:	-	0.0%	-	0.0%	-	0.0%	-	0.0%	-	0.0%	-	-	-	-	-	0.0%
New Construction																
Residential (SF/COND/TH)	-	0.0%	-	0.0%	-	0.0%	-	0.0%	-	0.0%	-	-	-	-	-	0.0%
YTD:	-	0.0%	-	0.0%	-	0.0%	-	0.0%	-	0.0%	-	-	-	-	-	0.0%
Single Family	-	0.0%	-	0.0%	-	0.0%	-	0.0%	-	0.0%	-	-	-	-	-	0.0%
YTD:	-	0.0%	-	0.0%	-	0.0%	-	0.0%	-	0.0%	-	-	-	-	-	0.0%
Townhouse	-	0.0%	-	0.0%	-	0.0%	-	0.0%	-	0.0%	-	-	-	-	-	0.0%
YTD:	-	0.0%	-	0.0%	-	0.0%	-	0.0%	-	0.0%	-	-	-	-	-	0.0%
Condominium	-	0.0%	-	0.0%	-	0.0%	-	0.0%	-	0.0%	-	-	-	-	-	0.0%
YTD:	-	0.0%	-	0.0%	-	0.0%	-	0.0%	-	0.0%	-	-	-	-	-	0.0%

* Local Market Area Code: 456; Type: Census Place Group
 ** Closed Sale counts for most recent 3 months are Preliminary.

Market Analysis By Local Market Area*: Levelland

Property Type	Closed Sales**	YoY%	Dollar Volume	YoY%	Average Price	YoY%	Median Price	YoY%	Price/Sqft	YoY%	DOM	New Listings	Active Listings	Pending Sales	Months Inventory	Close To OLP
All(New and Existing)																
Residential (SF/COND/TH)	7	-12.5%	\$1,629,800	-0.5%	\$232,829	13.7%	\$225,500	6.9%	\$103	10.0%	166	12	28	10	2.8	98.4%
YTD:	7	-12.5%	\$1,629,800	-0.5%	\$232,829	13.7%	\$225,500	6.9%	\$103	10.0%	166	12	28	10		98.4%
Single Family	7	-12.5%	\$1,629,800	-0.5%	\$232,829	13.7%	\$225,500	6.9%	\$103	10.0%	166	12	28	10	2.8	98.4%
YTD:	7	-12.5%	\$1,629,800	-0.5%	\$232,829	13.7%	\$225,500	6.9%	\$103	10.0%	166	12	28	10		98.4%
Townhouse	-	0.0%	-	0.0%	-	0.0%	-	0.0%	-	0.0%	-	-	-	-	-	0.0%
YTD:	-	0.0%	-	0.0%	-	0.0%	-	0.0%	-	0.0%	-	-	-	-	-	0.0%
Condominium	-	0.0%	-	0.0%	-	0.0%	-	0.0%	-	0.0%	-	-	-	-	-	0.0%
YTD:	-	0.0%	-	0.0%	-	0.0%	-	0.0%	-	0.0%	-	-	-	-	-	0.0%
Existing Home																
Residential (SF/COND/TH)	7	-12.5%	\$1,629,800	-0.5%	\$232,829	13.7%	\$225,500	6.9%	\$103	10.0%	166	12	27	10	2.7	98.4%
YTD:	7	-12.5%	\$1,629,800	-0.5%	\$232,829	13.7%	\$225,500	6.9%	\$103	10.0%	166	12	27	10		98.4%
Single Family	7	-12.5%	\$1,629,800	-0.5%	\$232,829	13.7%	\$225,500	6.9%	\$103	10.0%	166	12	27	10	2.8	98.4%
YTD:	7	-12.5%	\$1,629,800	-0.5%	\$232,829	13.7%	\$225,500	6.9%	\$103	10.0%	166	12	27	10		98.4%
Townhouse	-	0.0%	-	0.0%	-	0.0%	-	0.0%	-	0.0%	-	-	-	-	-	0.0%
YTD:	-	0.0%	-	0.0%	-	0.0%	-	0.0%	-	0.0%	-	-	-	-	-	0.0%
Condominium	-	0.0%	-	0.0%	-	0.0%	-	0.0%	-	0.0%	-	-	-	-	-	0.0%
YTD:	-	0.0%	-	0.0%	-	0.0%	-	0.0%	-	0.0%	-	-	-	-	-	0.0%
New Construction																
Residential (SF/COND/TH)	-	0.0%	-	0.0%	-	0.0%	-	0.0%	-	0.0%	-	-	1	-	12.0	0.0%
YTD:	-	0.0%	-	0.0%	-	0.0%	-	0.0%	-	0.0%	-	-	1	-		0.0%
Single Family	-	0.0%	-	0.0%	-	0.0%	-	0.0%	-	0.0%	-	-	1	-	12.0	0.0%
YTD:	-	0.0%	-	0.0%	-	0.0%	-	0.0%	-	0.0%	-	-	1	-		0.0%
Townhouse	-	0.0%	-	0.0%	-	0.0%	-	0.0%	-	0.0%	-	-	-	-	-	0.0%
YTD:	-	0.0%	-	0.0%	-	0.0%	-	0.0%	-	0.0%	-	-	-	-	-	0.0%
Condominium	-	0.0%	-	0.0%	-	0.0%	-	0.0%	-	0.0%	-	-	-	-	-	0.0%
YTD:	-	0.0%	-	0.0%	-	0.0%	-	0.0%	-	0.0%	-	-	-	-	-	0.0%

* Local Market Area Code: 220; Type: Census Place Group
 ** Closed Sale counts for most recent 3 months are Preliminary.

Market Analysis By Local Market Area*: Lubbock

Property Type	Closed Sales**	YoY%	Dollar Volume	YoY%	Average Price	YoY%	Median Price	YoY%	Price/Sqft	YoY%	DOM	New Listings	Active Listings	Pending Sales	Months Inventory	Close To OLP
All(New and Existing)																
Residential (SF/COND/TH)	194	10.2%	\$53,388,476	22.9%	\$275,198	11.5%	\$232,500	5.4%	\$133	8.3%	70	607	1,082	310	4.0	92.4%
YTD:	194	10.2%	\$53,388,476	22.9%	\$275,198	11.5%	\$232,500	5.4%	\$133	8.3%	70	607	1,082	310		92.4%
Single Family	189	8.6%	\$52,365,566	21.4%	\$277,066	11.7%	\$232,750	3.4%	\$133	8.5%	69	598	1,040	303	4.0	92.4%
YTD:	189	8.6%	\$52,365,566	21.4%	\$277,066	11.7%	\$232,750	3.4%	\$133	8.5%	69	598	1,040	303		92.4%
Townhouse	3	200.0%	\$637,250	213.9%	\$212,417	4.6%	\$152,250	-25.0%	\$120	-4.2%	75	5	35	5	4.5	0.0%
YTD:	3	200.0%	\$637,250	213.9%	\$212,417	4.6%	\$152,250	-25.0%	\$120	-4.2%	75	5	35	5		0.0%
Condominium	2	100.0%	\$395,000	393.8%	\$197,500	146.9%	\$197,500	146.9%	\$133	13.5%	132	4	7	2	3.7	0.0%
YTD:	2	100.0%	\$395,000	393.8%	\$197,500	146.9%	\$197,500	146.9%	\$133	13.5%	132	4	7	2		0.0%
Existing Home																
Residential (SF/COND/TH)	156	1.3%	\$42,610,814	18.3%	\$273,146	16.8%	\$229,000	9.1%	\$128	9.1%	74	518	947	226	4.1	90.8%
YTD:	156	1.3%	\$42,610,814	18.3%	\$273,146	16.8%	\$229,000	9.1%	\$128	9.1%	74	518	947	226		90.8%
Single Family	151	-0.7%	\$41,587,638	16.4%	\$275,415	17.2%	\$230,000	9.5%	\$128	9.2%	73	509	910	219	4.0	90.8%
YTD:	151	-0.7%	\$41,587,638	16.4%	\$275,415	17.2%	\$230,000	9.5%	\$128	9.2%	73	509	910	219		90.8%
Townhouse	3	200.0%	\$637,250	213.9%	\$212,417	4.6%	\$152,250	-25.0%	\$120	-4.2%	75	5	30	5	6.7	0.0%
YTD:	3	200.0%	\$637,250	213.9%	\$212,417	4.6%	\$152,250	-25.0%	\$120	-4.2%	75	5	30	5		0.0%
Condominium	2	100.0%	\$395,000	393.8%	\$197,500	146.9%	\$197,500	146.9%	\$133	13.5%	132	4	7	2	3.7	0.0%
YTD:	2	100.0%	\$395,000	393.8%	\$197,500	146.9%	\$197,500	146.9%	\$133	13.5%	132	4	7	2		0.0%
New Construction																
Residential (SF/COND/TH)	38	72.7%	\$10,777,884	45.4%	\$283,629	-15.8%	\$243,990	-13.6%	\$153	-4.5%	53	89	135	84	3.8	98.1%
YTD:	38	72.7%	\$10,777,884	45.4%	\$283,629	-15.8%	\$243,990	-13.6%	\$153	-4.5%	53	89	135	84		98.1%
Single Family	38	72.7%	\$10,777,884	45.4%	\$283,629	-15.8%	\$243,990	-13.6%	\$153	-4.5%	53	89	130	84	4.0	98.1%
YTD:	38	72.7%	\$10,777,884	45.4%	\$283,629	-15.8%	\$243,990	-13.6%	\$153	-4.5%	53	89	130	84		98.1%
Townhouse	-	0.0%	-	0.0%	-	0.0%	-	0.0%	-	0.0%	-	-	5	-	1.5	0.0%
YTD:	-	0.0%	-	0.0%	-	0.0%	-	0.0%	-	0.0%	-	-	5	-		0.0%
Condominium	-	0.0%	-	0.0%	-	0.0%	-	0.0%	-	0.0%	-	-	-	-	-	0.0%
YTD:	-	0.0%	-	0.0%	-	0.0%	-	0.0%	-	0.0%	-	-	-	-		0.0%

* Local Market Area Code: 596; Type: Census Place Group
 ** Closed Sale counts for most recent 3 months are Preliminary.

Market Analysis By Local Market Area*: New Deal

Property Type	Closed Sales**	YoY%	Dollar Volume	YoY%	Average Price	YoY%	Median Price	YoY%	Price/Sqft	YoY%	DOM	New Listings	Active Listings	Pending Sales	Months Inventory	Close To OLP
All(New and Existing)																
Residential (SF/COND/TH)	-	0.0%	-	0.0%	-	0.0%	-	0.0%	-	0.0%	-	1	2	-	4.0	0.0%
YTD:	-	0.0%	-	0.0%	-	0.0%	-	0.0%	-	0.0%	-	1	2	-		0.0%
Single Family	-	0.0%	-	0.0%	-	0.0%	-	0.0%	-	0.0%	-	1	2	-	4.0	0.0%
YTD:	-	0.0%	-	0.0%	-	0.0%	-	0.0%	-	0.0%	-	1	2	-		0.0%
Townhouse	-	0.0%	-	0.0%	-	0.0%	-	0.0%	-	0.0%	-	-	-	-	-	0.0%
YTD:	-	0.0%	-	0.0%	-	0.0%	-	0.0%	-	0.0%	-	-	-	-	-	0.0%
Condominium	-	0.0%	-	0.0%	-	0.0%	-	0.0%	-	0.0%	-	-	-	-	-	0.0%
YTD:	-	0.0%	-	0.0%	-	0.0%	-	0.0%	-	0.0%	-	-	-	-	-	0.0%
Existing Home																
Residential (SF/COND/TH)	-	0.0%	-	0.0%	-	0.0%	-	0.0%	-	0.0%	-	1	2	-	4.8	0.0%
YTD:	-	0.0%	-	0.0%	-	0.0%	-	0.0%	-	0.0%	-	1	2	-		0.0%
Single Family	-	0.0%	-	0.0%	-	0.0%	-	0.0%	-	0.0%	-	1	2	-	4.8	0.0%
YTD:	-	0.0%	-	0.0%	-	0.0%	-	0.0%	-	0.0%	-	1	2	-		0.0%
Townhouse	-	0.0%	-	0.0%	-	0.0%	-	0.0%	-	0.0%	-	-	-	-	-	0.0%
YTD:	-	0.0%	-	0.0%	-	0.0%	-	0.0%	-	0.0%	-	-	-	-	-	0.0%
Condominium	-	0.0%	-	0.0%	-	0.0%	-	0.0%	-	0.0%	-	-	-	-	-	0.0%
YTD:	-	0.0%	-	0.0%	-	0.0%	-	0.0%	-	0.0%	-	-	-	-	-	0.0%
New Construction																
Residential (SF/COND/TH)	-	0.0%	-	0.0%	-	0.0%	-	0.0%	-	0.0%	-	-	-	-	-	0.0%
YTD:	-	0.0%	-	0.0%	-	0.0%	-	0.0%	-	0.0%	-	-	-	-	-	0.0%
Single Family	-	0.0%	-	0.0%	-	0.0%	-	0.0%	-	0.0%	-	-	-	-	-	0.0%
YTD:	-	0.0%	-	0.0%	-	0.0%	-	0.0%	-	0.0%	-	-	-	-	-	0.0%
Townhouse	-	0.0%	-	0.0%	-	0.0%	-	0.0%	-	0.0%	-	-	-	-	-	0.0%
YTD:	-	0.0%	-	0.0%	-	0.0%	-	0.0%	-	0.0%	-	-	-	-	-	0.0%
Condominium	-	0.0%	-	0.0%	-	0.0%	-	0.0%	-	0.0%	-	-	-	-	-	0.0%
YTD:	-	0.0%	-	0.0%	-	0.0%	-	0.0%	-	0.0%	-	-	-	-	-	0.0%

* Local Market Area Code: 700; Type: Census Place Group
 ** Closed Sale counts for most recent 3 months are Preliminary.

Market Analysis By Local Market Area*: Ransom Canyon

Property Type	Closed Sales**	YoY%	Dollar Volume	YoY%	Average Price	YoY%	Median Price	YoY%	Price/Sqft	YoY%	DOM	New Listings	Active Listings	Pending Sales	Months Inventory	Close To OLP
All(New and Existing)																
Residential (SF/COND/TH)	1	0.0%	\$280,000	150.0%	\$280,000	150.0%	\$280,000	150.0%	\$130	72.9%	9	10	13	3	4.7	0.0%
YTD:	1	0.0%	\$280,000	150.0%	\$280,000	150.0%	\$280,000	150.0%	\$130	72.9%	9	10	13	3		0.0%
Single Family	1	0.0%	\$280,000	150.0%	\$280,000	150.0%	\$280,000	150.0%	\$130	72.9%	9	10	13	3	4.7	0.0%
YTD:	1	0.0%	\$280,000	150.0%	\$280,000	150.0%	\$280,000	150.0%	\$130	72.9%	9	10	13	3		0.0%
Townhouse	-	0.0%	-	0.0%	-	0.0%	-	0.0%	-	0.0%	-	-	-	-	-	0.0%
YTD:	-	0.0%	-	0.0%	-	0.0%	-	0.0%	-	0.0%	-	-	-	-	-	0.0%
Condominium	-	0.0%	-	0.0%	-	0.0%	-	0.0%	-	0.0%	-	-	-	-	-	0.0%
YTD:	-	0.0%	-	0.0%	-	0.0%	-	0.0%	-	0.0%	-	-	-	-	-	0.0%
Existing Home																
Residential (SF/COND/TH)	1	0.0%	\$280,000	150.0%	\$280,000	150.0%	\$280,000	150.0%	\$130	72.9%	9	10	13	3	4.9	0.0%
YTD:	1	0.0%	\$280,000	150.0%	\$280,000	150.0%	\$280,000	150.0%	\$130	72.9%	9	10	13	3		0.0%
Single Family	1	0.0%	\$280,000	150.0%	\$280,000	150.0%	\$280,000	150.0%	\$130	72.9%	9	10	13	3	4.9	0.0%
YTD:	1	0.0%	\$280,000	150.0%	\$280,000	150.0%	\$280,000	150.0%	\$130	72.9%	9	10	13	3		0.0%
Townhouse	-	0.0%	-	0.0%	-	0.0%	-	0.0%	-	0.0%	-	-	-	-	-	0.0%
YTD:	-	0.0%	-	0.0%	-	0.0%	-	0.0%	-	0.0%	-	-	-	-	-	0.0%
Condominium	-	0.0%	-	0.0%	-	0.0%	-	0.0%	-	0.0%	-	-	-	-	-	0.0%
YTD:	-	0.0%	-	0.0%	-	0.0%	-	0.0%	-	0.0%	-	-	-	-	-	0.0%
New Construction																
Residential (SF/COND/TH)	-	0.0%	-	0.0%	-	0.0%	-	0.0%	-	0.0%	-	-	-	-	-	0.0%
YTD:	-	0.0%	-	0.0%	-	0.0%	-	0.0%	-	0.0%	-	-	-	-	-	0.0%
Single Family	-	0.0%	-	0.0%	-	0.0%	-	0.0%	-	0.0%	-	-	-	-	-	0.0%
YTD:	-	0.0%	-	0.0%	-	0.0%	-	0.0%	-	0.0%	-	-	-	-	-	0.0%
Townhouse	-	0.0%	-	0.0%	-	0.0%	-	0.0%	-	0.0%	-	-	-	-	-	0.0%
YTD:	-	0.0%	-	0.0%	-	0.0%	-	0.0%	-	0.0%	-	-	-	-	-	0.0%
Condominium	-	0.0%	-	0.0%	-	0.0%	-	0.0%	-	0.0%	-	-	-	-	-	0.0%
YTD:	-	0.0%	-	0.0%	-	0.0%	-	0.0%	-	0.0%	-	-	-	-	-	0.0%

* Local Market Area Code: 826; Type: Census Place Group
 ** Closed Sale counts for most recent 3 months are Preliminary.

Market Analysis By Local Market Area*: Ropesville

Property Type	Closed Sales**	YoY%	Dollar Volume	YoY%	Average Price	YoY%	Median Price	YoY%	Price/Sqft	YoY%	DOM	New Listings	Active Listings	Pending Sales	Months Inventory	Close To OLP
All(New and Existing)																
Residential (SF/COND/TH)	-	0.0%	-	0.0%	-	0.0%	-	0.0%	-	0.0%	-	1	1	-	4.0	0.0%
YTD:	-	0.0%	-	0.0%	-	0.0%	-	0.0%	-	0.0%	-	1	1	-		0.0%
Single Family	-	0.0%	-	0.0%	-	0.0%	-	0.0%	-	0.0%	-	1	1	-	4.0	0.0%
YTD:	-	0.0%	-	0.0%	-	0.0%	-	0.0%	-	0.0%	-	1	1	-		0.0%
Townhouse	-	0.0%	-	0.0%	-	0.0%	-	0.0%	-	0.0%	-	-	-	-	-	0.0%
YTD:	-	0.0%	-	0.0%	-	0.0%	-	0.0%	-	0.0%	-	-	-	-	-	0.0%
Condominium	-	0.0%	-	0.0%	-	0.0%	-	0.0%	-	0.0%	-	-	-	-	-	0.0%
YTD:	-	0.0%	-	0.0%	-	0.0%	-	0.0%	-	0.0%	-	-	-	-	-	0.0%
Existing Home																
Residential (SF/COND/TH)	-	0.0%	-	0.0%	-	0.0%	-	0.0%	-	0.0%	-	1	1	-	4.0	0.0%
YTD:	-	0.0%	-	0.0%	-	0.0%	-	0.0%	-	0.0%	-	1	1	-		0.0%
Single Family	-	0.0%	-	0.0%	-	0.0%	-	0.0%	-	0.0%	-	1	1	-	4.0	0.0%
YTD:	-	0.0%	-	0.0%	-	0.0%	-	0.0%	-	0.0%	-	1	1	-		0.0%
Townhouse	-	0.0%	-	0.0%	-	0.0%	-	0.0%	-	0.0%	-	-	-	-	-	0.0%
YTD:	-	0.0%	-	0.0%	-	0.0%	-	0.0%	-	0.0%	-	-	-	-	-	0.0%
Condominium	-	0.0%	-	0.0%	-	0.0%	-	0.0%	-	0.0%	-	-	-	-	-	0.0%
YTD:	-	0.0%	-	0.0%	-	0.0%	-	0.0%	-	0.0%	-	-	-	-	-	0.0%
New Construction																
Residential (SF/COND/TH)	-	0.0%	-	0.0%	-	0.0%	-	0.0%	-	0.0%	-	-	-	-	-	0.0%
YTD:	-	0.0%	-	0.0%	-	0.0%	-	0.0%	-	0.0%	-	-	-	-	-	0.0%
Single Family	-	0.0%	-	0.0%	-	0.0%	-	0.0%	-	0.0%	-	-	-	-	-	0.0%
YTD:	-	0.0%	-	0.0%	-	0.0%	-	0.0%	-	0.0%	-	-	-	-	-	0.0%
Townhouse	-	0.0%	-	0.0%	-	0.0%	-	0.0%	-	0.0%	-	-	-	-	-	0.0%
YTD:	-	0.0%	-	0.0%	-	0.0%	-	0.0%	-	0.0%	-	-	-	-	-	0.0%
Condominium	-	0.0%	-	0.0%	-	0.0%	-	0.0%	-	0.0%	-	-	-	-	-	0.0%
YTD:	-	0.0%	-	0.0%	-	0.0%	-	0.0%	-	0.0%	-	-	-	-	-	0.0%

* Local Market Area Code: 222; Type: Census Place Group
 ** Closed Sale counts for most recent 3 months are Preliminary.

Market Analysis By Local Market Area*: Shallowater

Property Type	Closed Sales**	YoY%	Dollar Volume	YoY%	Average Price	YoY%	Median Price	YoY%	Price/Sqft	YoY%	DOM	New Listings	Active Listings	Pending Sales	Months Inventory	Close To OLP
All(New and Existing)																
Residential (SF/COND/TH)	4	100.0%	\$539,000	100.0%	\$134,750	100.0%	\$115,500	100.0%	\$91	100.0%	56	9	13	6	3.1	86.2%
YTD:	4	100.0%	\$539,000	100.0%	\$134,750	100.0%	\$115,500	100.0%	\$91	100.0%	56	9	13	6		86.2%
Single Family	4	100.0%	\$539,000	100.0%	\$134,750	100.0%	\$115,500	100.0%	\$91	100.0%	56	9	13	6	3.1	86.2%
YTD:	4	100.0%	\$539,000	100.0%	\$134,750	100.0%	\$115,500	100.0%	\$91	100.0%	56	9	13	6		86.2%
Townhouse	-	0.0%	-	0.0%	-	0.0%	-	0.0%	-	0.0%	-	-	-	-	-	0.0%
YTD:	-	0.0%	-	0.0%	-	0.0%	-	0.0%	-	0.0%	-	-	-	-	-	0.0%
Condominium	-	0.0%	-	0.0%	-	0.0%	-	0.0%	-	0.0%	-	-	-	-	-	0.0%
YTD:	-	0.0%	-	0.0%	-	0.0%	-	0.0%	-	0.0%	-	-	-	-	-	0.0%
Existing Home																
Residential (SF/COND/TH)	4	100.0%	\$539,000	100.0%	\$134,750	100.0%	\$115,500	100.0%	\$91	100.0%	56	9	12	6	3.2	86.2%
YTD:	4	100.0%	\$539,000	100.0%	\$134,750	100.0%	\$115,500	100.0%	\$91	100.0%	56	9	12	6		86.2%
Single Family	4	100.0%	\$539,000	100.0%	\$134,750	100.0%	\$115,500	100.0%	\$91	100.0%	56	9	12	6	3.2	86.2%
YTD:	4	100.0%	\$539,000	100.0%	\$134,750	100.0%	\$115,500	100.0%	\$91	100.0%	56	9	12	6		86.2%
Townhouse	-	0.0%	-	0.0%	-	0.0%	-	0.0%	-	0.0%	-	-	-	-	-	0.0%
YTD:	-	0.0%	-	0.0%	-	0.0%	-	0.0%	-	0.0%	-	-	-	-	-	0.0%
Condominium	-	0.0%	-	0.0%	-	0.0%	-	0.0%	-	0.0%	-	-	-	-	-	0.0%
YTD:	-	0.0%	-	0.0%	-	0.0%	-	0.0%	-	0.0%	-	-	-	-	-	0.0%
New Construction																
Residential (SF/COND/TH)	-	0.0%	-	0.0%	-	0.0%	-	0.0%	-	0.0%	-	-	1	-	2.4	0.0%
YTD:	-	0.0%	-	0.0%	-	0.0%	-	0.0%	-	0.0%	-	-	1	-		0.0%
Single Family	-	0.0%	-	0.0%	-	0.0%	-	0.0%	-	0.0%	-	-	1	-	2.4	0.0%
YTD:	-	0.0%	-	0.0%	-	0.0%	-	0.0%	-	0.0%	-	-	1	-		0.0%
Townhouse	-	0.0%	-	0.0%	-	0.0%	-	0.0%	-	0.0%	-	-	-	-	-	0.0%
YTD:	-	0.0%	-	0.0%	-	0.0%	-	0.0%	-	0.0%	-	-	-	-	-	0.0%
Condominium	-	0.0%	-	0.0%	-	0.0%	-	0.0%	-	0.0%	-	-	-	-	-	0.0%
YTD:	-	0.0%	-	0.0%	-	0.0%	-	0.0%	-	0.0%	-	-	-	-	-	0.0%

* Local Market Area Code: 925; Type: Census Place Group
 ** Closed Sale counts for most recent 3 months are Preliminary.

Market Analysis By Local Market Area*: Slaton

Property Type	Closed Sales**	YoY%	Dollar Volume	YoY%	Average Price	YoY%	Median Price	YoY%	Price/Sqft	YoY%	DOM	New Listings	Active Listings	Pending Sales	Months Inventory	Close To OLP
All(New and Existing)																
Residential (SF/COND/TH)	1	-83.3%	\$22,000	-96.1%	\$22,000	-76.7%	\$22,000	-80.2%	\$13	-79.8%	179	7	17	4	5.0	0.0%
YTD:	1	-83.3%	\$22,000	-96.1%	\$22,000	-76.7%	\$22,000	-80.2%	\$13	-79.8%	179	7	17	4		0.0%
Single Family	1	-83.3%	\$22,000	-96.1%	\$22,000	-76.7%	\$22,000	-80.2%	\$13	-79.8%	179	7	17	4	5.0	0.0%
YTD:	1	-83.3%	\$22,000	-96.1%	\$22,000	-76.7%	\$22,000	-80.2%	\$13	-79.8%	179	7	17	4		0.0%
Townhouse	-	0.0%	-	0.0%	-	0.0%	-	0.0%	-	0.0%	-	-	-	-	-	0.0%
YTD:	-	0.0%	-	0.0%	-	0.0%	-	0.0%	-	0.0%	-	-	-	-	-	0.0%
Condominium	-	0.0%	-	0.0%	-	0.0%	-	0.0%	-	0.0%	-	-	-	-	-	0.0%
YTD:	-	0.0%	-	0.0%	-	0.0%	-	0.0%	-	0.0%	-	-	-	-	-	0.0%
Existing Home																
Residential (SF/COND/TH)	1	-83.3%	\$22,000	-96.1%	\$22,000	-76.7%	\$22,000	-80.2%	\$13	-79.8%	179	7	17	4	5.1	0.0%
YTD:	1	-83.3%	\$22,000	-96.1%	\$22,000	-76.7%	\$22,000	-80.2%	\$13	-79.8%	179	7	17	4		0.0%
Single Family	1	-83.3%	\$22,000	-96.1%	\$22,000	-76.7%	\$22,000	-80.2%	\$13	-79.8%	179	7	17	4	5.1	0.0%
YTD:	1	-83.3%	\$22,000	-96.1%	\$22,000	-76.7%	\$22,000	-80.2%	\$13	-79.8%	179	7	17	4		0.0%
Townhouse	-	0.0%	-	0.0%	-	0.0%	-	0.0%	-	0.0%	-	-	-	-	-	0.0%
YTD:	-	0.0%	-	0.0%	-	0.0%	-	0.0%	-	0.0%	-	-	-	-	-	0.0%
Condominium	-	0.0%	-	0.0%	-	0.0%	-	0.0%	-	0.0%	-	-	-	-	-	0.0%
YTD:	-	0.0%	-	0.0%	-	0.0%	-	0.0%	-	0.0%	-	-	-	-	-	0.0%
New Construction																
Residential (SF/COND/TH)	-	0.0%	-	0.0%	-	0.0%	-	0.0%	-	0.0%	-	-	-	-	-	0.0%
YTD:	-	0.0%	-	0.0%	-	0.0%	-	0.0%	-	0.0%	-	-	-	-	-	0.0%
Single Family	-	0.0%	-	0.0%	-	0.0%	-	0.0%	-	0.0%	-	-	-	-	-	0.0%
YTD:	-	0.0%	-	0.0%	-	0.0%	-	0.0%	-	0.0%	-	-	-	-	-	0.0%
Townhouse	-	0.0%	-	0.0%	-	0.0%	-	0.0%	-	0.0%	-	-	-	-	-	0.0%
YTD:	-	0.0%	-	0.0%	-	0.0%	-	0.0%	-	0.0%	-	-	-	-	-	0.0%
Condominium	-	0.0%	-	0.0%	-	0.0%	-	0.0%	-	0.0%	-	-	-	-	-	0.0%
YTD:	-	0.0%	-	0.0%	-	0.0%	-	0.0%	-	0.0%	-	-	-	-	-	0.0%

* Local Market Area Code: 935; Type: Census Place Group
 ** Closed Sale counts for most recent 3 months are Preliminary.

Market Analysis By Local Market Area*: Smyer

Property Type	Closed Sales**	YoY%	Dollar Volume	YoY%	Average Price	YoY%	Median Price	YoY%	Price/Sqft	YoY%	DOM	New Listings	Active Listings	Pending Sales	Months Inventory	Close To OLP
All(New and Existing)																
Residential (SF/COND/TH)	-	0.0%	-	0.0%	-	0.0%	-	0.0%	-	0.0%	-	-	-	-	-	0.0%
YTD:	-	0.0%	-	0.0%	-	0.0%	-	0.0%	-	0.0%	-	-	-	-	-	0.0%
Single Family	-	0.0%	-	0.0%	-	0.0%	-	0.0%	-	0.0%	-	-	-	-	-	0.0%
YTD:	-	0.0%	-	0.0%	-	0.0%	-	0.0%	-	0.0%	-	-	-	-	-	0.0%
Townhouse	-	0.0%	-	0.0%	-	0.0%	-	0.0%	-	0.0%	-	-	-	-	-	0.0%
YTD:	-	0.0%	-	0.0%	-	0.0%	-	0.0%	-	0.0%	-	-	-	-	-	0.0%
Condominium	-	0.0%	-	0.0%	-	0.0%	-	0.0%	-	0.0%	-	-	-	-	-	0.0%
YTD:	-	0.0%	-	0.0%	-	0.0%	-	0.0%	-	0.0%	-	-	-	-	-	0.0%
Existing Home																
Residential (SF/COND/TH)	-	0.0%	-	0.0%	-	0.0%	-	0.0%	-	0.0%	-	-	-	-	-	0.0%
YTD:	-	0.0%	-	0.0%	-	0.0%	-	0.0%	-	0.0%	-	-	-	-	-	0.0%
Single Family	-	0.0%	-	0.0%	-	0.0%	-	0.0%	-	0.0%	-	-	-	-	-	0.0%
YTD:	-	0.0%	-	0.0%	-	0.0%	-	0.0%	-	0.0%	-	-	-	-	-	0.0%
Townhouse	-	0.0%	-	0.0%	-	0.0%	-	0.0%	-	0.0%	-	-	-	-	-	0.0%
YTD:	-	0.0%	-	0.0%	-	0.0%	-	0.0%	-	0.0%	-	-	-	-	-	0.0%
Condominium	-	0.0%	-	0.0%	-	0.0%	-	0.0%	-	0.0%	-	-	-	-	-	0.0%
YTD:	-	0.0%	-	0.0%	-	0.0%	-	0.0%	-	0.0%	-	-	-	-	-	0.0%
New Construction																
Residential (SF/COND/TH)	-	0.0%	-	0.0%	-	0.0%	-	0.0%	-	0.0%	-	-	-	-	-	0.0%
YTD:	-	0.0%	-	0.0%	-	0.0%	-	0.0%	-	0.0%	-	-	-	-	-	0.0%
Single Family	-	0.0%	-	0.0%	-	0.0%	-	0.0%	-	0.0%	-	-	-	-	-	0.0%
YTD:	-	0.0%	-	0.0%	-	0.0%	-	0.0%	-	0.0%	-	-	-	-	-	0.0%
Townhouse	-	0.0%	-	0.0%	-	0.0%	-	0.0%	-	0.0%	-	-	-	-	-	0.0%
YTD:	-	0.0%	-	0.0%	-	0.0%	-	0.0%	-	0.0%	-	-	-	-	-	0.0%
Condominium	-	0.0%	-	0.0%	-	0.0%	-	0.0%	-	0.0%	-	-	-	-	-	0.0%
YTD:	-	0.0%	-	0.0%	-	0.0%	-	0.0%	-	0.0%	-	-	-	-	-	0.0%

* Local Market Area Code: 491; Type: Census Place Group
 ** Closed Sale counts for most recent 3 months are Preliminary.

Market Analysis By Local Market Area*: Sundown

Property Type	Closed Sales**	YoY%	Dollar Volume	YoY%	Average Price	YoY%	Median Price	YoY%	Price/Sqft	YoY%	DOM	New Listings	Active Listings	Pending Sales	Months Inventory	Close To OLP
All(New and Existing)																
Residential (SF/COND/TH)	-	0.0%	-	0.0%	-	0.0%	-	0.0%	-	0.0%	-	-	1	-	1.5	0.0%
YTD:	-	0.0%	-	0.0%	-	0.0%	-	0.0%	-	0.0%	-	-	1	-		0.0%
Single Family	-	0.0%	-	0.0%	-	0.0%	-	0.0%	-	0.0%	-	-	1	-	1.5	0.0%
YTD:	-	0.0%	-	0.0%	-	0.0%	-	0.0%	-	0.0%	-	-	1	-		0.0%
Townhouse	-	0.0%	-	0.0%	-	0.0%	-	0.0%	-	0.0%	-	-	-	-	-	0.0%
YTD:	-	0.0%	-	0.0%	-	0.0%	-	0.0%	-	0.0%	-	-	-	-	-	0.0%
Condominium	-	0.0%	-	0.0%	-	0.0%	-	0.0%	-	0.0%	-	-	-	-	-	0.0%
YTD:	-	0.0%	-	0.0%	-	0.0%	-	0.0%	-	0.0%	-	-	-	-	-	0.0%
Existing Home																
Residential (SF/COND/TH)	-	0.0%	-	0.0%	-	0.0%	-	0.0%	-	0.0%	-	-	1	-	1.5	0.0%
YTD:	-	0.0%	-	0.0%	-	0.0%	-	0.0%	-	0.0%	-	-	1	-		0.0%
Single Family	-	0.0%	-	0.0%	-	0.0%	-	0.0%	-	0.0%	-	-	1	-	1.5	0.0%
YTD:	-	0.0%	-	0.0%	-	0.0%	-	0.0%	-	0.0%	-	-	1	-		0.0%
Townhouse	-	0.0%	-	0.0%	-	0.0%	-	0.0%	-	0.0%	-	-	-	-	-	0.0%
YTD:	-	0.0%	-	0.0%	-	0.0%	-	0.0%	-	0.0%	-	-	-	-	-	0.0%
Condominium	-	0.0%	-	0.0%	-	0.0%	-	0.0%	-	0.0%	-	-	-	-	-	0.0%
YTD:	-	0.0%	-	0.0%	-	0.0%	-	0.0%	-	0.0%	-	-	-	-	-	0.0%
New Construction																
Residential (SF/COND/TH)	-	0.0%	-	0.0%	-	0.0%	-	0.0%	-	0.0%	-	-	-	-	-	0.0%
YTD:	-	0.0%	-	0.0%	-	0.0%	-	0.0%	-	0.0%	-	-	-	-	-	0.0%
Single Family	-	0.0%	-	0.0%	-	0.0%	-	0.0%	-	0.0%	-	-	-	-	-	0.0%
YTD:	-	0.0%	-	0.0%	-	0.0%	-	0.0%	-	0.0%	-	-	-	-	-	0.0%
Townhouse	-	0.0%	-	0.0%	-	0.0%	-	0.0%	-	0.0%	-	-	-	-	-	0.0%
YTD:	-	0.0%	-	0.0%	-	0.0%	-	0.0%	-	0.0%	-	-	-	-	-	0.0%
Condominium	-	0.0%	-	0.0%	-	0.0%	-	0.0%	-	0.0%	-	-	-	-	-	0.0%
YTD:	-	0.0%	-	0.0%	-	0.0%	-	0.0%	-	0.0%	-	-	-	-	-	0.0%

* Local Market Area Code: 223; Type: Census Place Group
 ** Closed Sale counts for most recent 3 months are Preliminary.

Market Analysis By Local Market Area*: Wolfforth

Property Type	Closed Sales**	YoY%	Dollar Volume	YoY%	Average Price	YoY%	Median Price	YoY%	Price/Sqft	YoY%	DOM	New Listings	Active Listings	Pending Sales	Months Inventory	Close To OLP
All(New and Existing)																
Residential (SF/COND/TH)	3	-66.7%	\$827,990	-68.5%	\$275,997	-5.4%	\$224,990	-15.1%	\$153	1.4%	59	21	50	9	4.1	0.0%
YTD:	3	-66.7%	\$827,990	-68.5%	\$275,997	-5.4%	\$224,990	-15.1%	\$153	1.4%	59	21	50	9		0.0%
Single Family	2	-77.8%	\$654,990	-75.1%	\$327,495	12.2%	\$327,495	23.6%	\$158	5.0%	40	21	50	9	4.3	0.0%
YTD:	2	-77.8%	\$654,990	-75.1%	\$327,495	12.2%	\$327,495	23.6%	\$158	5.0%	40	21	50	9		0.0%
Townhouse	1	100.0%	\$173,000	100.0%	\$173,000	100.0%	\$173,000	100.0%	\$142	100.0%	96	-	-	-	-	0.0%
YTD:	1	100.0%	\$173,000	100.0%	\$173,000	100.0%	\$173,000	100.0%	\$142	100.0%	96	-	-	-	-	0.0%
Condominium	-	0.0%	-	0.0%	-	0.0%	-	0.0%	-	0.0%	-	-	-	-	-	0.0%
YTD:	-	0.0%	-	0.0%	-	0.0%	-	0.0%	-	0.0%	-	-	-	-	-	0.0%
Existing Home																
Residential (SF/COND/TH)	2	-66.7%	\$603,000	-68.5%	\$301,500	-5.4%	\$301,500	-14.5%	\$156	1.5%	68	19	42	6	4.6	0.0%
YTD:	2	-66.7%	\$603,000	-68.5%	\$301,500	-5.4%	\$301,500	-14.5%	\$156	1.5%	68	19	42	6		0.0%
Single Family	1	-83.3%	\$430,000	-77.5%	\$430,000	35.0%	\$430,000	22.0%	\$171	10.8%	41	19	42	6	4.8	0.0%
YTD:	1	-83.3%	\$430,000	-77.5%	\$430,000	35.0%	\$430,000	22.0%	\$171	10.8%	41	19	42	6		0.0%
Townhouse	1	100.0%	\$173,000	100.0%	\$173,000	100.0%	\$173,000	100.0%	\$142	100.0%	96	-	-	-	-	0.0%
YTD:	1	100.0%	\$173,000	100.0%	\$173,000	100.0%	\$173,000	100.0%	\$142	100.0%	96	-	-	-	-	0.0%
Condominium	-	0.0%	-	0.0%	-	0.0%	-	0.0%	-	0.0%	-	-	-	-	-	0.0%
YTD:	-	0.0%	-	0.0%	-	0.0%	-	0.0%	-	0.0%	-	-	-	-	-	0.0%
New Construction																
Residential (SF/COND/TH)	1	-66.7%	\$224,990	-68.5%	\$224,990	-5.6%	\$224,990	4.8%	\$146	1.1%	40	2	8	3	2.7	0.0%
YTD:	1	-66.7%	\$224,990	-68.5%	\$224,990	-5.6%	\$224,990	4.8%	\$146	1.1%	40	2	8	3		0.0%
Single Family	1	-66.7%	\$224,990	-68.5%	\$224,990	-5.6%	\$224,990	4.8%	\$146	1.1%	40	2	8	3	2.7	0.0%
YTD:	1	-66.7%	\$224,990	-68.5%	\$224,990	-5.6%	\$224,990	4.8%	\$146	1.1%	40	2	8	3		0.0%
Townhouse	-	0.0%	-	0.0%	-	0.0%	-	0.0%	-	0.0%	-	-	-	-	-	0.0%
YTD:	-	0.0%	-	0.0%	-	0.0%	-	0.0%	-	0.0%	-	-	-	-	-	0.0%
Condominium	-	0.0%	-	0.0%	-	0.0%	-	0.0%	-	0.0%	-	-	-	-	-	0.0%
YTD:	-	0.0%	-	0.0%	-	0.0%	-	0.0%	-	0.0%	-	-	-	-	-	0.0%

* Local Market Area Code: 1096; Type: Census Place Group
 ** Closed Sale counts for most recent 3 months are Preliminary.

