

Market Analysis By State: Texas

Property Type	Closed Sales*	YoY%	Dollar Volume	YoY%	Average Price	YoY%	Median Price	YoY%	Price/Sqft	YoY%	DOM	New Listings	Active Listings	Pending Sales	Months Inventory	Close To OLP
<b>All(New and Existing)</b>																
Residential (SF/COND/TH)	30,569	2.6%	\$13,237,559,262	4.1%	\$433,039	1.5%	\$345,000	0.0%	\$193	0.0%	52	47,505	127,159	27,892	4.7	95.2%
YTD:	196,330	-1.6%	\$82,995,652,253	0.5%	\$422,735	2.2%	\$340,000	0.9%	\$192	1.5%	58	339,204	110,291	205,643		95.2%
Single Family	28,948	3.6%	\$12,699,911,746	5.2%	\$438,715	1.5%	\$349,900	0.3%	\$191	0.7%	52	44,370	117,147	26,371	4.6	95.2%
YTD:	185,198	-1.1%	\$79,063,021,245	0.9%	\$426,911	2.1%	\$341,000	0.3%	\$190	1.7%	58	315,235	101,574	194,068		95.2%
Townhouse	717	-3.2%	\$251,798,251	-4.5%	\$351,183	-1.3%	\$320,000	0.0%	\$193	-1.8%	49	1,326	3,407	692	4.8	95.4%
YTD:	5,096	-2.1%	\$1,828,301,742	-0.3%	\$358,772	1.8%	\$327,995	-0.3%	\$196	1.5%	55	9,751	3,016	5,333		95.6%
Condominium	885	-20.1%	\$281,543,375	-24.8%	\$318,128	-5.8%	\$247,000	-0.7%	\$256	-5.8%	62	1,809	6,605	829	7.8	93.7%
YTD:	6,006	-14.9%	\$2,095,405,131	-12.6%	\$348,885	2.8%	\$259,000	1.6%	\$266	0.9%	61	14,218	5,700	6,242		93.9%
<b>Existing Home</b>																
Residential (SF/COND/TH)	23,249	0.2%	\$10,153,823,239	4.1%	\$436,742	3.9%	\$340,000	1.5%	\$194	1.0%	46	36,882	95,318	20,268	4.8	95.1%
YTD:	145,581	-3.5%	\$61,746,254,749	0.9%	\$424,137	4.5%	\$332,000	2.2%	\$193	2.7%	51	261,247	80,635	150,904		95.1%
Single Family	21,840	1.1%	\$9,706,293,588	5.2%	\$444,427	4.0%	\$345,000	1.8%	\$192	1.8%	45	34,139	86,884	18,964	4.7	95.2%
YTD:	135,996	-3.0%	\$58,478,531,742	1.3%	\$430,002	4.5%	\$335,000	2.5%	\$190	2.9%	51	240,664	73,437	140,987		95.1%
Townhouse	554	-4.3%	\$190,615,347	-3.2%	\$344,071	1.2%	\$300,000	0.5%	\$189	-0.7%	43	1,042	2,451	529	4.6	95.2%
YTD:	3,856	-1.8%	\$1,342,732,551	1.1%	\$348,219	2.9%	\$305,000	0.0%	\$191	2.9%	46	7,402	2,094	4,016		95.7%
Condominium	834	-19.3%	\$251,416,359	-23.3%	\$301,458	-5.0%	\$240,000	0.4%	\$250	-5.4%	62	1,701	5,983	775	7.5	93.6%
YTD:	5,691	-14.2%	\$1,912,825,782	-11.0%	\$336,114	3.7%	\$250,000	3.3%	\$262	1.8%	60	13,181	5,103	5,901		93.9%
<b>New Construction</b>																
Residential (SF/COND/TH)	7,313	11.1%	\$3,079,953,184	4.1%	\$421,161	-6.3%	\$355,500	-4.6%	\$191	-3.3%	74	10,623	31,841	7,624	4.5	95.5%
YTD:	50,736	4.0%	\$21,243,807,760	-0.5%	\$418,713	-4.4%	\$352,400	-4.6%	\$190	-2.1%	78	77,957	29,655	54,739		95.4%
Single Family	7,100	11.9%	\$2,988,955,758	5.1%	\$420,980	-6.1%	\$355,000	-4.1%	\$189	-2.8%	74	10,231	30,263	7,407	4.4	95.5%
YTD:	49,185	4.5%	\$20,576,995,029	-0.1%	\$418,359	-4.4%	\$350,750	-4.7%	\$189	-1.8%	78	74,571	28,136	53,081		95.4%
Townhouse	161	-0.6%	\$60,446,643	-9.3%	\$375,445	-8.7%	\$367,415	-5.0%	\$207	-5.4%	70	284	956	163	5.4	96.0%
YTD:	1,232	-3.9%	\$482,576,192	-4.6%	\$391,701	-0.7%	\$369,359	-2.8%	\$213	-2.0%	82	2,349	921	1,317		95.5%
Condominium	51	-32.0%	\$30,260,714	-35.1%	\$593,347	-4.6%	\$485,000	-1.0%	\$360	-4.8%	59	108	622	54	12.0	95.7%
YTD:	315	-26.4%	\$182,606,768	-26.0%	\$579,704	0.5%	\$485,000	-2.0%	\$340	-6.3%	82	1,037	597	341		94.5%

\* Closed Sale counts for most recent 3 months are Preliminary.

Trend Analysis By State: Texas

Residential, All (New and Existing)



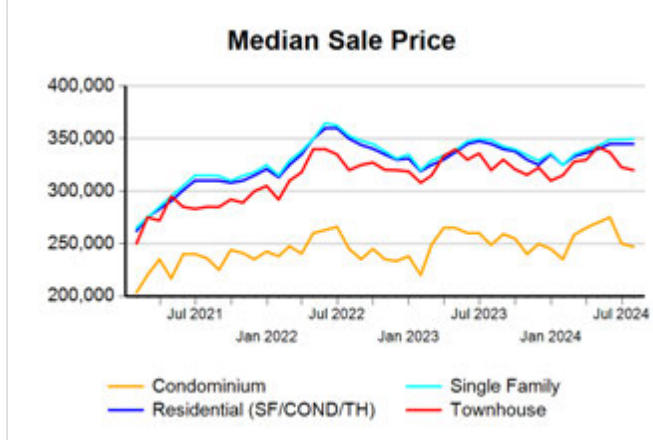
Single Family, New vs. Existing



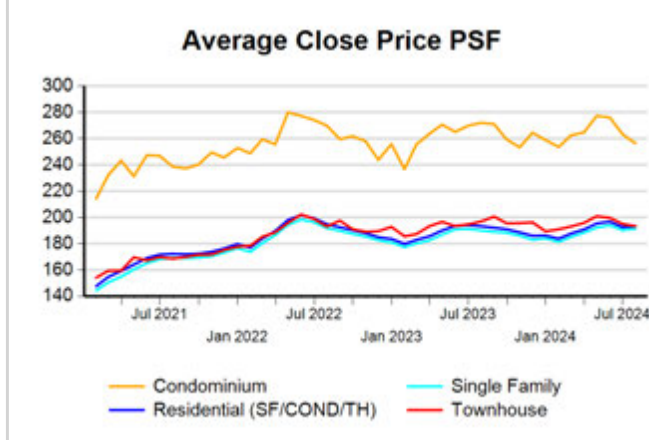
COND/TH, All (New and Existing)



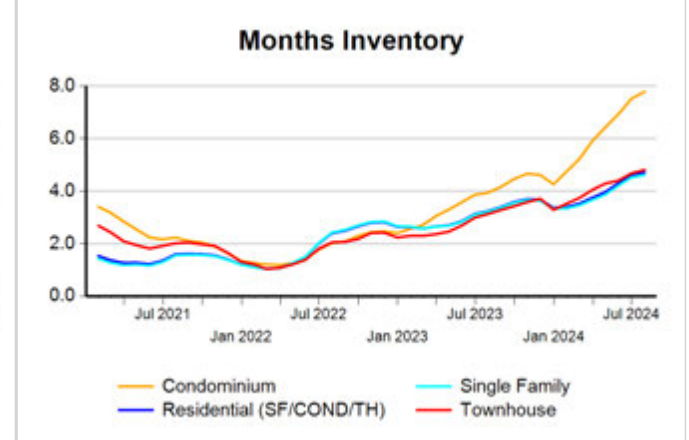
All (New and Existing) Construction



All (New and Existing) Construction



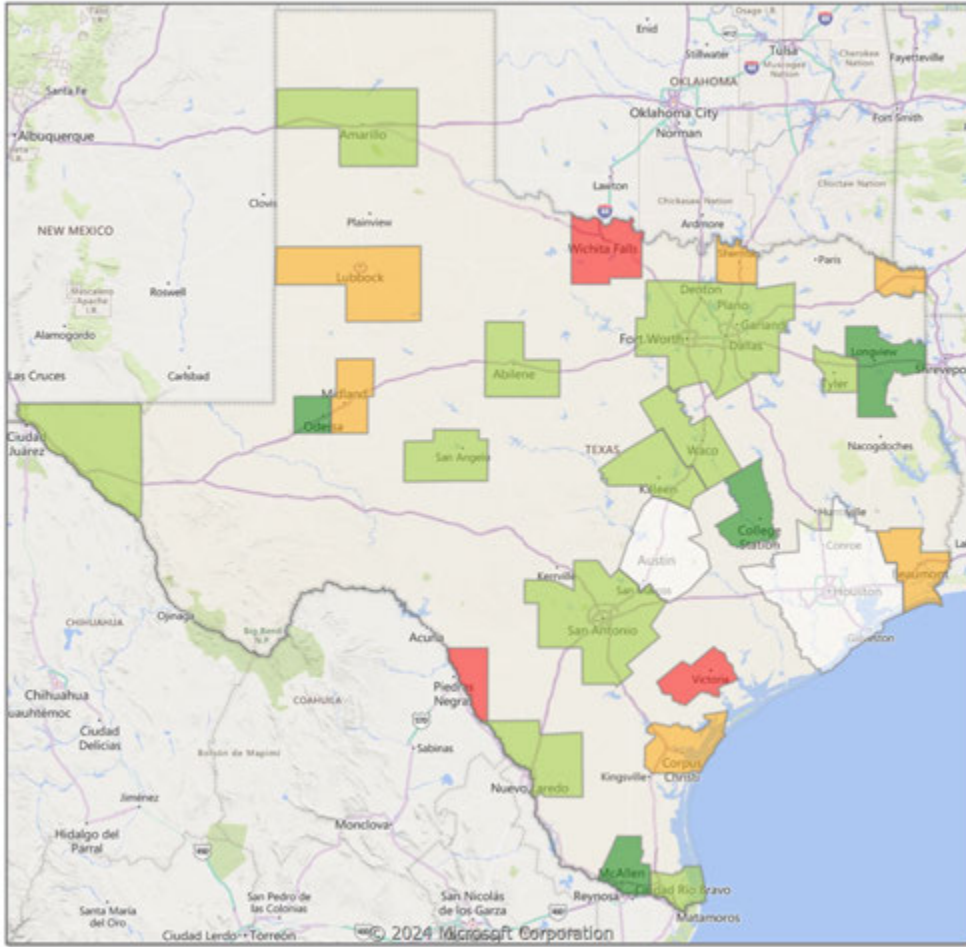
All (New and Existing) Construction



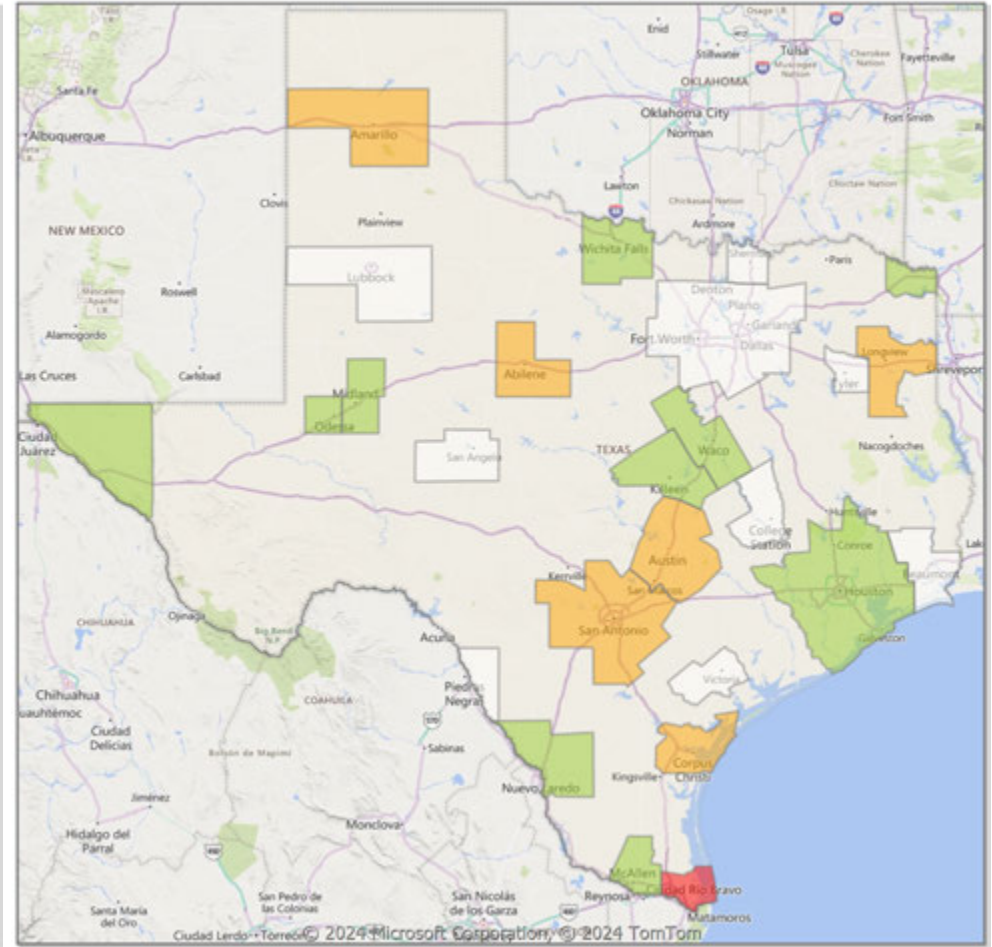
\* Closed Sale counts for most recent 3 months are Preliminary.

**Comparison By Metropolitan Statistical Area in Texas**

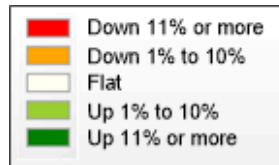
**Residential\* Closed Sales YoY Percentage Change**



**Residential\* Avg Close Price Per SqFt YoY Percentage Change**

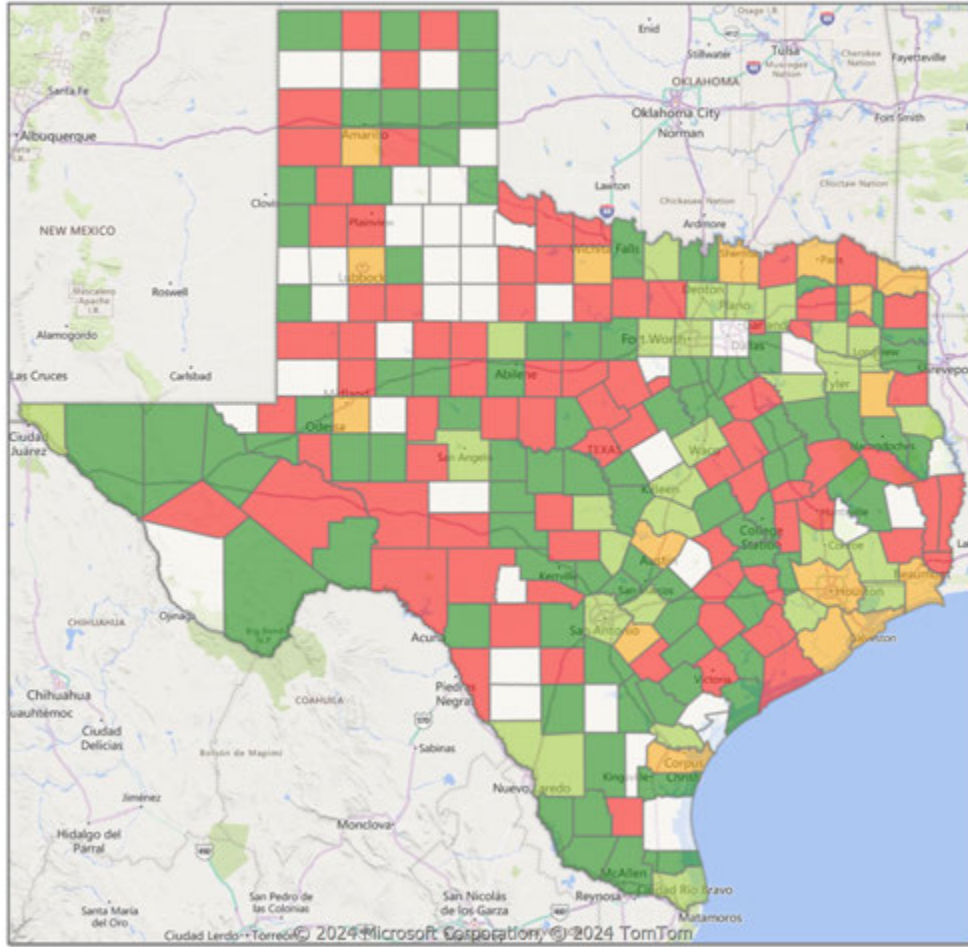


\* Residential includes Single Family, Condominium and Townhouse.

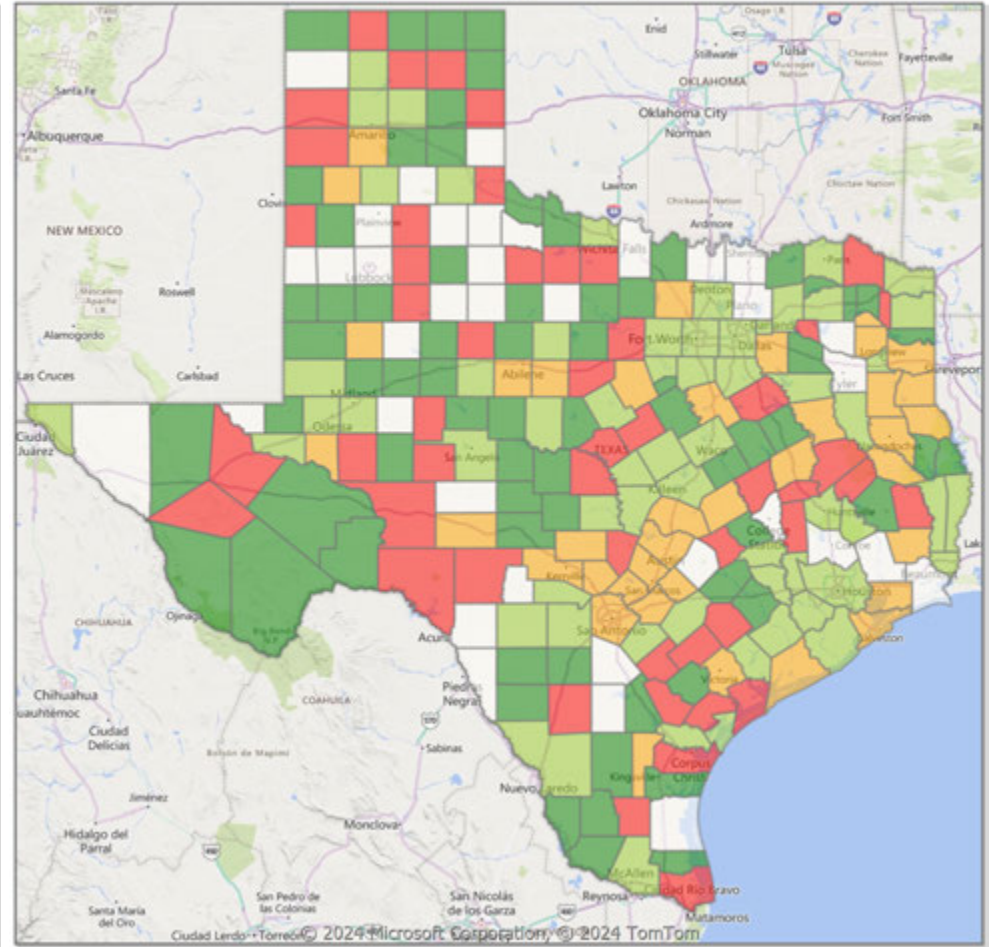


**Comparison By County in Texas**

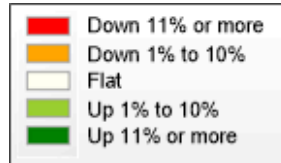
**Residential\* Closed Sales  
YoY Percentage Change**



**Residential\* Avg Close Price Per SqFt  
YoY Percentage Change**



\* Residential includes Single Family, Condominium and Townhouse.



Market Analysis By Metropolitan Statistical Area: Lubbock

Property Type	Closed Sales*	YoY%	Dollar Volume	YoY%	Average Price	YoY%	Median Price	YoY%	Price/Sqft	YoY%	DOM	New Listings	Active Listings	Pending Sales	Months Inventory	Close To OLP
<b>All(New and Existing)</b>																
Residential (SF/COND/TH)	470	-5.4%	\$132,258,281	-7.0%	\$281,401	-1.7%	\$230,000	-3.4%	\$137	0.3%	45	858	1,721	493	4.2	91.0%
YTD:	3,080	2.5%	\$863,270,145	2.9%	\$280,283	0.4%	\$233,330	-2.8%	\$136	0.5%	46	6,162	1,574	3,303		95.4%
Single Family	453	-6.2%	\$128,909,015	-7.7%	\$284,567	-1.6%	\$231,000	-4.2%	\$137	0.2%	45	836	1,635	479	4.1	90.9%
YTD:	2,981	1.8%	\$838,938,766	2.1%	\$281,429	0.3%	\$235,000	-2.9%	\$136	0.4%	45	5,938	1,494	3,198		95.5%
Townhouse	12	9.1%	\$2,235,700	8.5%	\$186,308	-0.6%	\$187,350	4.1%	\$125	-2.2%	75	19	72	13	7.7	93.0%
YTD:	77	22.2%	\$15,062,600	18.8%	\$195,618	-2.8%	\$190,000	-5.0%	\$132	0.3%	101	183	68	86		92.9%
Condominium	4	33.3%	\$886,000	58.8%	\$221,500	19.1%	\$242,000	49.4%	\$153	51.1%	26	3	14	1	6.2	0.0%
YTD:	19	46.2%	\$8,452,000	74.5%	\$444,842	19.4%	\$214,000	-2.7%	\$138	6.7%	38	41	11	19		91.8%

\* Closed Sale counts for most recent 3 months are Preliminary.

**Existing Home**

Residential (SF/COND/TH)	385	-8.8%	\$106,968,133	-5.6%	\$277,839	3.5%	\$229,000	1.8%	\$132	1.4%	44	667	1,384	381	4.4	89.2%
YTD:	2,355	-1.9%	\$646,089,166	2.9%	\$274,348	4.9%	\$225,000	1.4%	\$129	1.1%	43	4,843	1,214	2,524		94.6%
Single Family	375	-8.8%	\$105,092,330	-5.6%	\$280,246	3.5%	\$230,000	2.2%	\$132	1.1%	44	650	1,314	374	4.3	89.3%
YTD:	2,305	-1.8%	\$631,719,825	2.7%	\$274,065	4.6%	\$225,000	0.5%	\$129	1.1%	43	4,677	1,159	2,466		94.6%
Townhouse	6	-25.0%	\$1,023,500	-27.5%	\$170,583	-3.4%	\$173,750	-3.5%	\$115	-5.6%	62	14	57	6	17.1	85.1%
YTD:	31	-20.5%	\$5,912,250	-23.4%	\$190,718	-3.6%	\$170,000	-8.1%	\$118	-6.5%	58	126	44	39		89.9%
Condominium	4	33.3%	\$886,000	58.8%	\$221,500	19.1%	\$242,000	49.4%	\$153	51.1%	26	3	13	1	5.8	0.0%
YTD:	19	46.2%	\$8,452,000	74.5%	\$444,842	19.4%	\$214,000	-2.7%	\$138	6.7%	38	40	10	19		91.8%

\* Closed Sale counts for most recent 3 months are Preliminary.

**New Construction**

Residential (SF/COND/TH)	84	12.0%	\$25,007,824	-13.7%	\$297,712	-23.0%	\$247,490	-25.6%	\$160	-7.1%	51	191	337	112	3.6	96.2%
YTD:	723	19.5%	\$216,590,749	2.5%	\$299,572	-14.3%	\$252,000	-17.6%	\$158	-4.4%	56	1,319	360	779		97.8%
Single Family	78	8.3%	\$23,818,586	-16.0%	\$305,366	-22.4%	\$250,000	-25.2%	\$163	-6.5%	48	186	321	105	3.6	96.2%
YTD:	676	16.4%	\$207,161,466	0.4%	\$306,452	-13.8%	\$259,970	-17.5%	\$159	-4.3%	51	1,261	335	732		98.1%
Townhouse	6	100.0%	\$1,212,200	86.8%	\$202,033	-6.6%	\$212,250	-1.1%	\$135	-5.6%	89	5	15	7	2.5	96.9%
YTD:	46	91.7%	\$9,150,350	84.3%	\$198,921	-3.8%	\$195,000	-4.8%	\$141	0.7%	129	57	24	47		94.2%
Condominium	-	0.0%	-	0.0%	-	0.0%	-	0.0%	-	0.0%	-	-	1	0	-	0.0%
YTD:	-	0.0%	-	0.0%	-	0.0%	-	0.0%	-	0.0%	-	1	1	0		0.0%

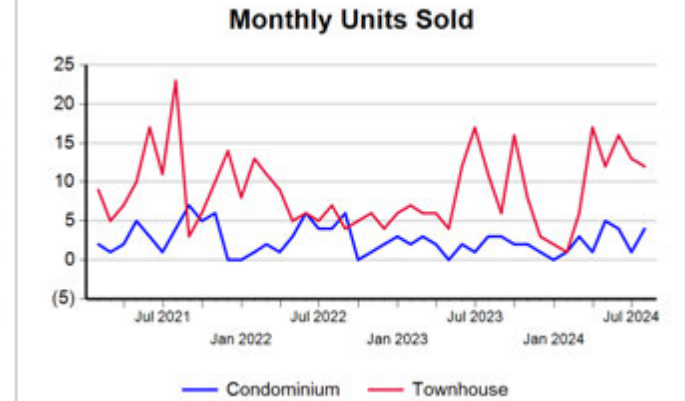
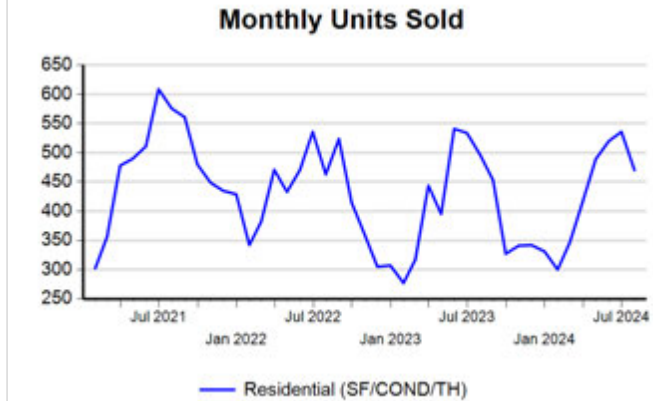
\* Closed Sale counts for most recent 3 months are Preliminary.

Trend Analysis By Metropolitan Statistical Area: Lubbock

Residential, All (New and Existing)

Single Family, New vs. Existing

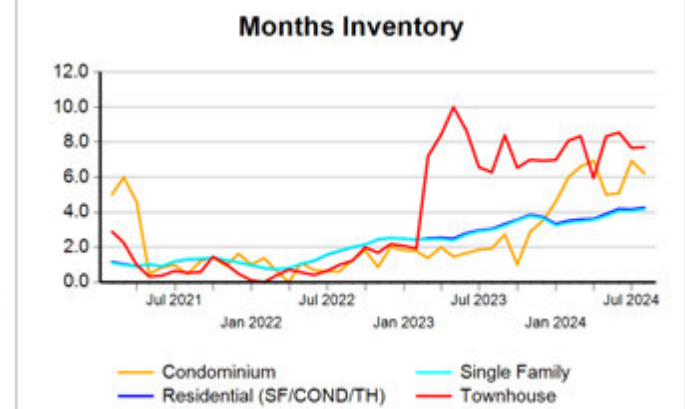
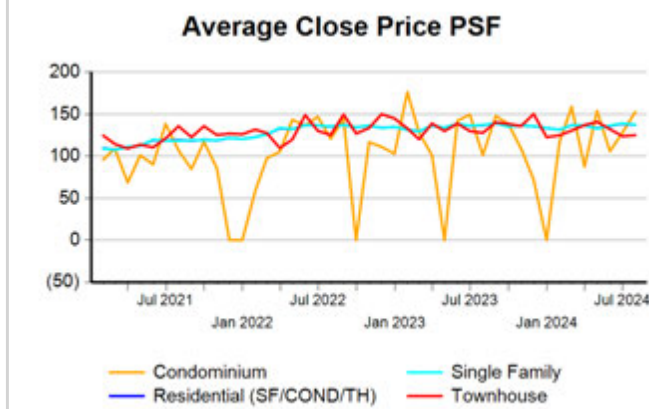
COND/TH, All (New and Existing)



All (New and Existing) Construction

All (New and Existing) Construction

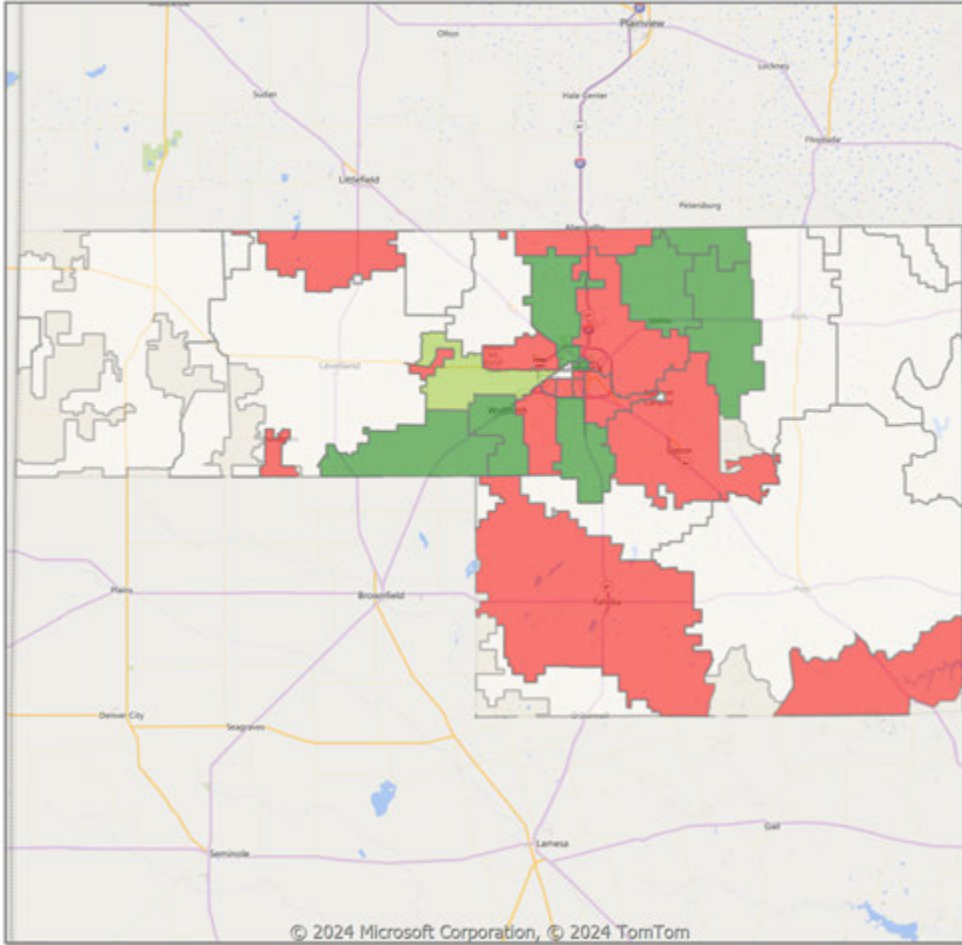
All (New and Existing) Construction



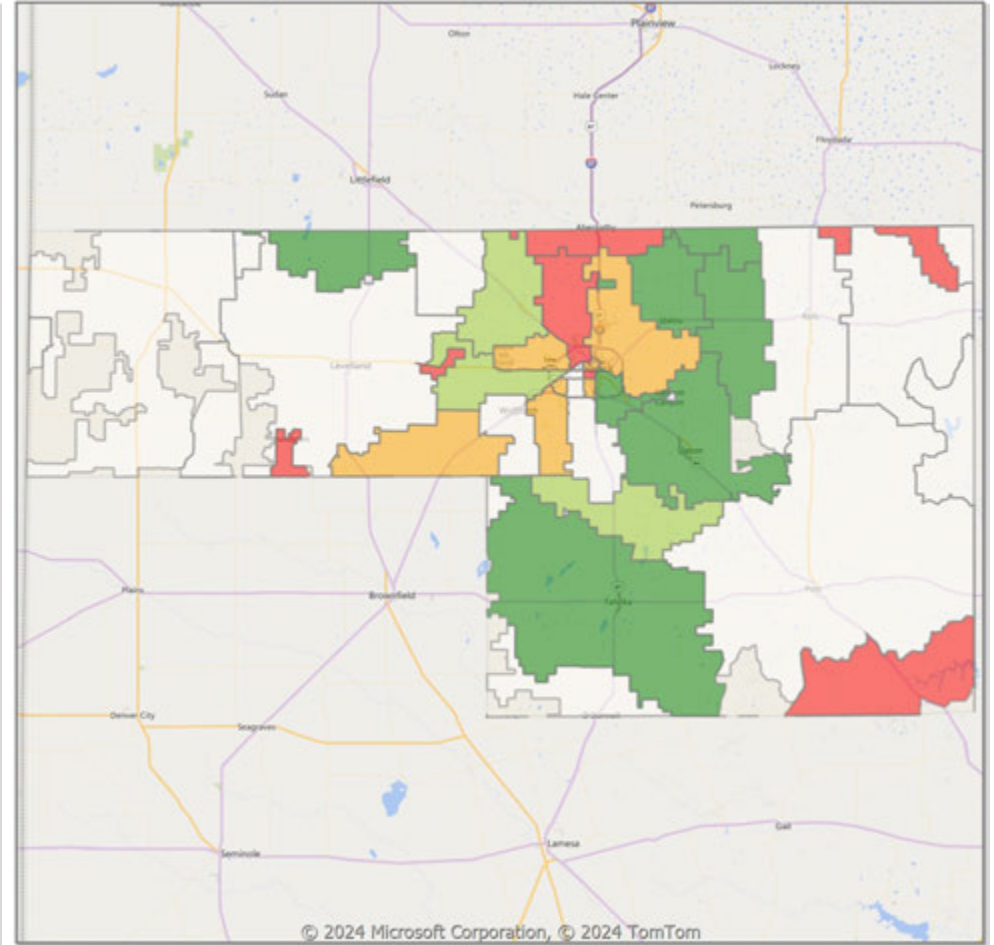
\* Closed Sale counts for most recent 3 months are Preliminary.

**Comparison By Zip Code\* in Lubbock MSA**

**Residential\*\* Closed Sales  
YoY Percentage Change**

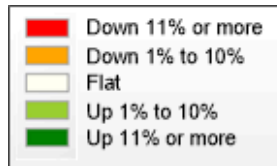


**Residential\*\* Avg Close Price Per SqFt  
YoY Percentage Change**



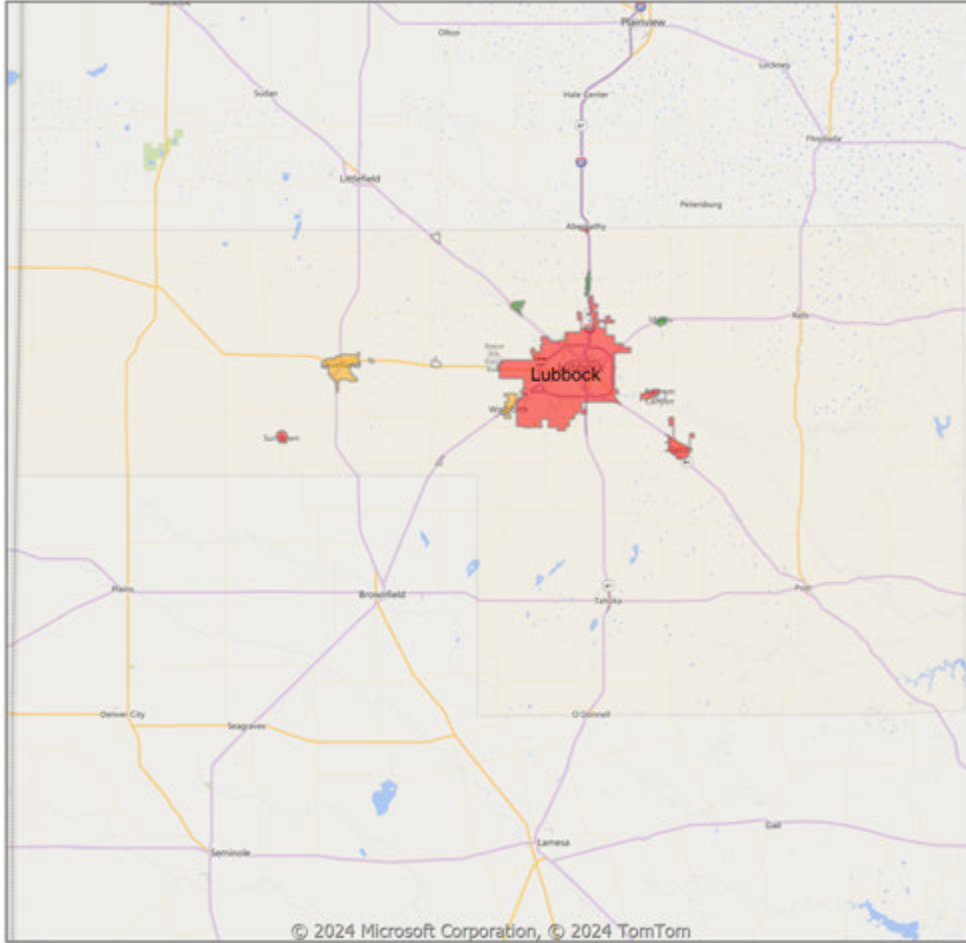
\* US Census Zip Code Tabulation Area

\*\* Residential includes Single Family, Condominium and Townhouse.

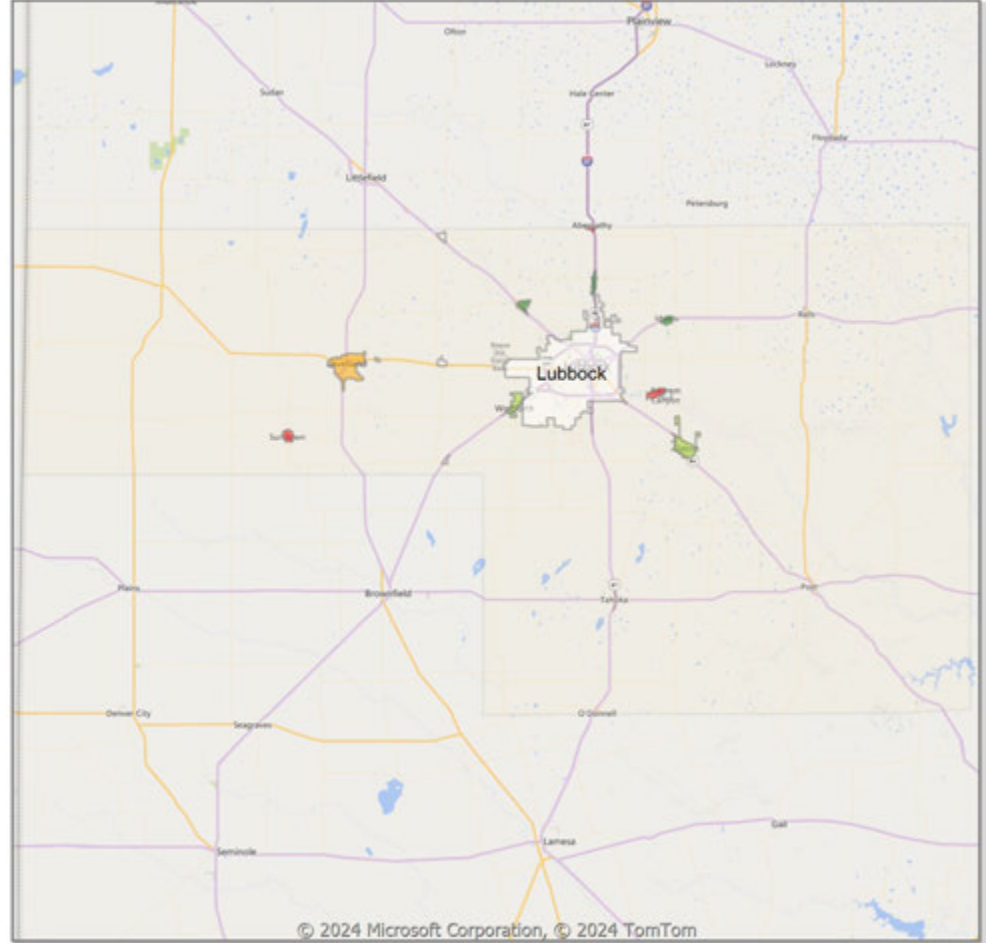


**Comparison By Local Market Area\* in Lubbock MSA**

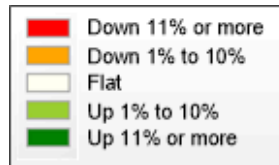
**Residential\*\* Closed Sales  
YoY Percentage Change**



**Residential\*\* Avg Close Price Per SqFt  
YoY Percentage Change**



\* Census Place Group  
\*\* Residential includes Single Family, Condominium and Townhouse.





Market Analysis By County: Hockley County

Property Type	Closed Sales*	YoY%	Dollar Volume	YoY%	Average Price	YoY%	Median Price	YoY%	Price/Sqft	YoY%	DOM	New Listings	Active Listings	Pending Sales	Months Inventory	Close To OLP
<b>All(New and Existing)</b>																
Residential (SF/COND/TH)	15	0.0%	\$3,066,316	-18.8%	\$204,421	-18.8%	\$207,000	-9.2%	\$104	-0.1%	26	29	66	25	3.9	88.6%
<b>YTD:</b>	133	20.9%	\$28,156,671	11.3%	\$211,704	-8.0%	\$190,000	-9.5%	\$106	0.3%	67	202	71	146		92.6%
Single Family	15	0.0%	\$3,066,316	-18.8%	\$204,421	-18.8%	\$207,000	-9.2%	\$104	-0.1%	26	29	66	25	3.9	88.6%
<b>YTD:</b>	132	20.0%	\$28,016,671	10.7%	\$212,248	-7.8%	\$192,290	-8.4%	\$107	1.0%	66	202	71	145		92.9%
Townhouse	-	0.0%	-	0.0%	-	0.0%	-	0.0%	-	0.0%	-	-	-	-	-	0.0%
<b>YTD:</b>	-	0.0%	-	0.0%	-	0.0%	-	0.0%	-	0.0%	-	-	-	-	-	0.0%
Condominium	-	0.0%	-	0.0%	-	0.0%	-	0.0%	-	0.0%	-	-	-	-	-	0.0%
<b>YTD:</b>	1	100.0%	\$140,000	100.0%	\$140,000	100.0%	\$140,000	100.0%	\$7	100.0%	255	-	1	1		58.6%
<b>Existing Home</b>																
Residential (SF/COND/TH)	14	-6.7%	\$2,696,700	-28.6%	\$192,621	-23.5%	\$203,500	-10.8%	\$100	-4.4%	28	23	56	20	3.6	88.6%
<b>YTD:</b>	117	9.4%	\$23,711,935	-3.0%	\$202,666	-11.3%	\$189,000	-10.0%	\$99	-5.6%	66	173	62	126		92.0%
Single Family	14	-6.7%	\$2,696,700	-28.6%	\$192,621	-23.5%	\$203,500	-10.8%	\$100	-4.4%	28	23	56	20	3.7	88.6%
<b>YTD:</b>	116	8.4%	\$23,571,935	-3.6%	\$203,206	-11.1%	\$189,250	-9.9%	\$100	-4.9%	65	173	62	125		92.4%
Townhouse	-	0.0%	-	0.0%	-	0.0%	-	0.0%	-	0.0%	-	-	-	-	-	0.0%
<b>YTD:</b>	-	0.0%	-	0.0%	-	0.0%	-	0.0%	-	0.0%	-	-	-	-	-	0.0%
Condominium	-	0.0%	-	0.0%	-	0.0%	-	0.0%	-	0.0%	-	-	-	-	-	0.0%
<b>YTD:</b>	1	100.0%	\$140,000	100.0%	\$140,000	100.0%	\$140,000	100.0%	\$7	100.0%	255	-	1	1		58.6%
<b>New Construction</b>																
Residential (SF/COND/TH)	1	100.0%	\$369,616	100.0%	\$369,616	100.0%	\$369,616	100.0%	\$167	100.0%	6	6	10	5	6.3	0.0%
<b>YTD:</b>	16	433.3%	\$4,444,736	414.4%	\$277,796	-3.5%	\$247,000	-1.2%	\$158	16.8%	73	29	9	20		97.2%
Single Family	1	100.0%	\$369,616	100.0%	\$369,616	100.0%	\$369,616	100.0%	\$167	100.0%	6	6	10	5	6.3	0.0%
<b>YTD:</b>	16	433.3%	\$4,444,736	414.4%	\$277,796	-3.5%	\$247,000	-1.2%	\$158	16.8%	73	29	9	20		97.2%
Townhouse	-	0.0%	-	0.0%	-	0.0%	-	0.0%	-	0.0%	-	-	-	-	-	0.0%
<b>YTD:</b>	-	0.0%	-	0.0%	-	0.0%	-	0.0%	-	0.0%	-	-	-	-	-	0.0%
Condominium	-	0.0%	-	0.0%	-	0.0%	-	0.0%	-	0.0%	-	-	-	-	-	0.0%
<b>YTD:</b>	-	0.0%	-	0.0%	-	0.0%	-	0.0%	-	0.0%	-	-	-	-	-	0.0%

\* Closed Sale counts for most recent 3 months are Preliminary.

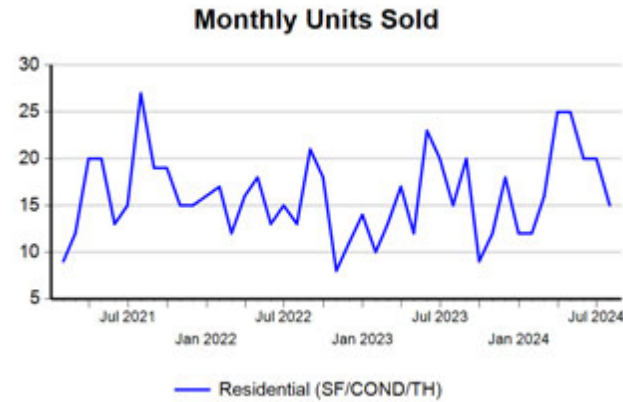
Market Analysis By County: Lubbock County

Property Type	Closed Sales*	YoY%	Dollar Volume	YoY%	Average Price	YoY%	Median Price	YoY%	Price/Sqft	YoY%	DOM	New Listings	Active Listings	Pending Sales	Months Inventory	Close To OLP
<b>All(New and Existing)</b>																
Residential (SF/COND/TH)	439	-5.8%	\$124,984,191	-5.3%	\$284,702	0.6%	\$230,000	-4.6%	\$139	1.0%	45	800	1,583	451	4.2	91.7%
YTD:	2,845	1.2%	\$808,799,969	1.8%	\$284,288	0.7%	\$235,155	-3.6%	\$138	0.4%	45	5,772	1,436	3,054		95.7%
Single Family	422	-6.6%	\$121,637,961	-5.9%	\$288,242	0.8%	\$236,000	-3.3%	\$139	0.8%	44	778	1,498	437	4.1	91.6%
YTD:	2,747	0.4%	\$784,600,490	1.0%	\$285,621	0.6%	\$239,000	-2.5%	\$138	0.4%	43	5,549	1,358	2,950		95.8%
Townhouse	12	9.1%	\$2,235,700	8.5%	\$186,308	-0.6%	\$187,350	4.1%	\$125	-2.2%	75	19	72	13	7.7	93.0%
YTD:	77	22.2%	\$15,062,600	18.8%	\$195,618	-2.8%	\$190,000	-5.0%	\$132	0.3%	101	183	68	86		92.9%
Condominium	4	33.3%	\$886,000	58.8%	\$221,500	19.1%	\$242,000	49.4%	\$153	51.1%	26	3	13	1	6.0	0.0%
YTD:	18	50.0%	\$8,312,000	78.4%	\$461,778	18.9%	\$222,000	-10.3%	\$145	6.9%	26	40	10	18		95.1%
<b>Existing Home</b>																
Residential (SF/COND/TH)	355	-9.2%	\$100,060,532	-2.8%	\$281,861	7.1%	\$230,000	2.2%	\$134	2.3%	43	617	1,266	345	4.4	89.8%
YTD:	2,145	-3.1%	\$599,895,718	2.5%	\$279,672	5.8%	\$230,000	2.2%	\$132	1.3%	41	4,499	1,098	2,302		94.9%
Single Family	345	-9.2%	\$98,189,484	-2.7%	\$284,607	7.1%	\$230,000	2.2%	\$134	2.1%	43	600	1,196	338	4.3	89.8%
YTD:	2,096	-3.1%	\$585,666,961	2.2%	\$279,421	5.5%	\$230,000	2.2%	\$132	1.3%	41	4,333	1,043	2,245		95.0%
Townhouse	6	-25.0%	\$1,023,500	-27.5%	\$170,583	-3.4%	\$173,750	-3.5%	\$115	-5.6%	62	14	57	6	17.1	85.1%
YTD:	31	-20.5%	\$5,912,250	-23.4%	\$190,718	-3.6%	\$170,000	-8.1%	\$118	-6.5%	58	126	44	39		89.9%
Condominium	4	33.3%	\$886,000	58.8%	\$221,500	19.1%	\$242,000	49.4%	\$153	51.1%	26	3	13	1	6.0	0.0%
YTD:	18	50.0%	\$8,312,000	78.4%	\$461,778	18.9%	\$222,000	-10.3%	\$145	6.9%	26	40	10	18		95.1%
<b>New Construction</b>																
Residential (SF/COND/TH)	83	10.7%	\$24,635,511	-15.0%	\$296,813	-23.2%	\$243,720	-26.7%	\$160	-7.1%	52	183	317	106	3.5	96.2%
YTD:	698	16.7%	\$208,309,173	-0.2%	\$298,437	-14.5%	\$250,000	-18.0%	\$158	-4.5%	56	1,273	338	752		97.8%
Single Family	77	6.9%	\$23,446,366	-17.3%	\$304,498	-22.6%	\$250,000	-25.2%	\$162	-6.6%	49	178	302	99	3.5	96.2%
YTD:	651	13.4%	\$198,881,579	-2.4%	\$305,502	-14.0%	\$258,990	-17.7%	\$159	-4.4%	50	1,216	314	705		98.1%
Townhouse	6	100.0%	\$1,212,200	86.8%	\$202,033	-6.6%	\$212,250	-1.1%	\$135	-5.6%	89	5	15	7	2.5	96.9%
YTD:	46	91.7%	\$9,150,350	84.3%	\$198,921	-3.8%	\$195,000	-4.8%	\$141	0.7%	129	57	24	47		94.2%
Condominium	-	0.0%	-	0.0%	-	0.0%	-	0.0%	-	0.0%	-	-	-	-	-	0.0%
YTD:	-	0.0%	-	0.0%	-	0.0%	-	0.0%	-	0.0%	-	-	1	-		0.0%

\* Closed Sale counts for most recent 3 months are Preliminary.

Trend Analysis By County: Hockley County

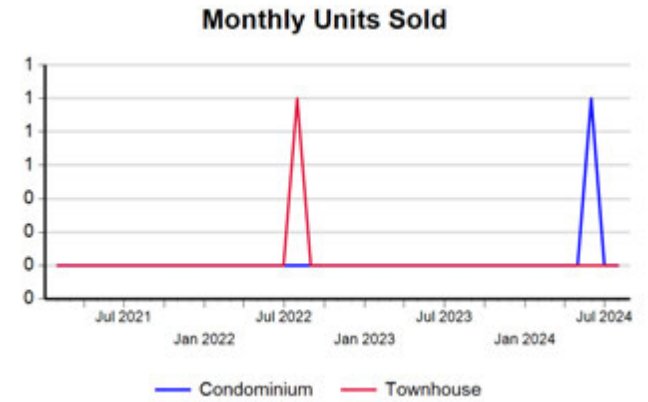
Residential, All (New and Existing)



Single Family, New vs. Existing



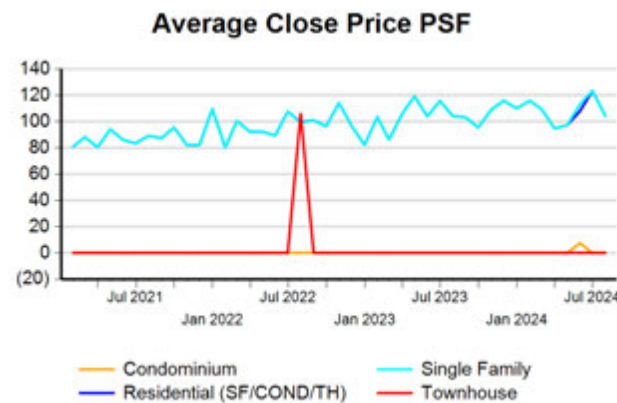
COND/TH, All (New and Existing)



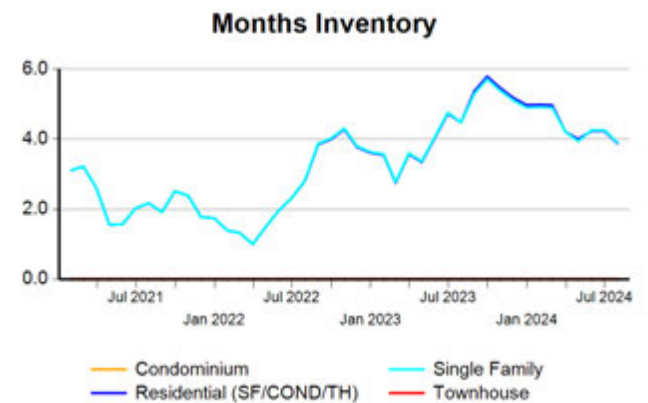
All (New and Existing) Construction



All (New and Existing) Construction



All (New and Existing) Construction



\* Closed Sale counts for most recent 3 months are Preliminary.

Trend Analysis By County: Lubbock County

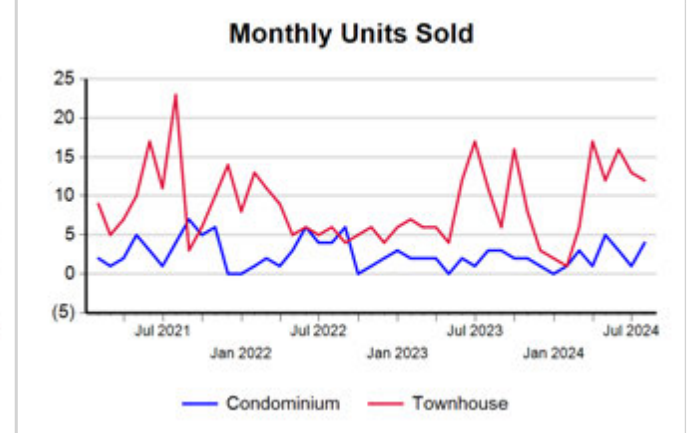
Residential, All (New and Existing)



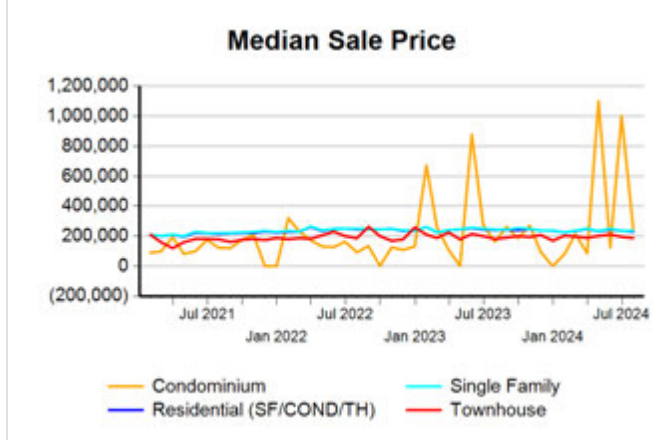
Single Family, New vs. Existing



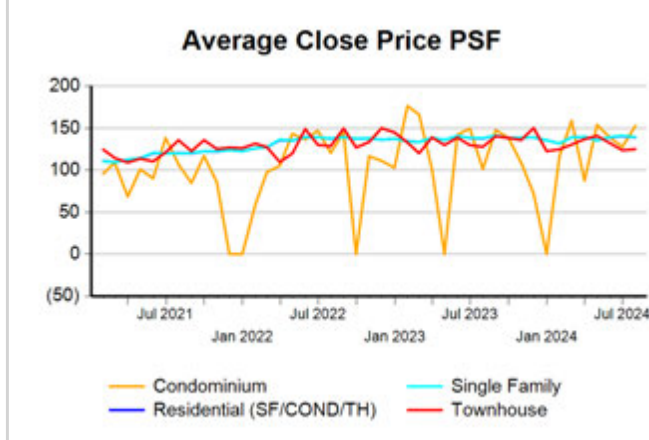
COND/TH, All (New and Existing)



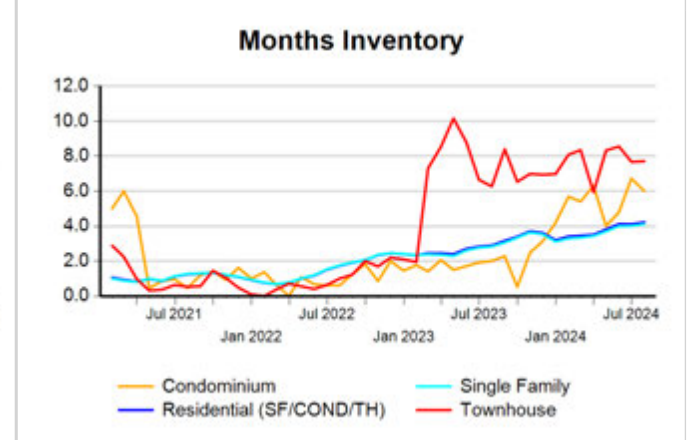
All (New and Existing) Construction



All (New and Existing) Construction



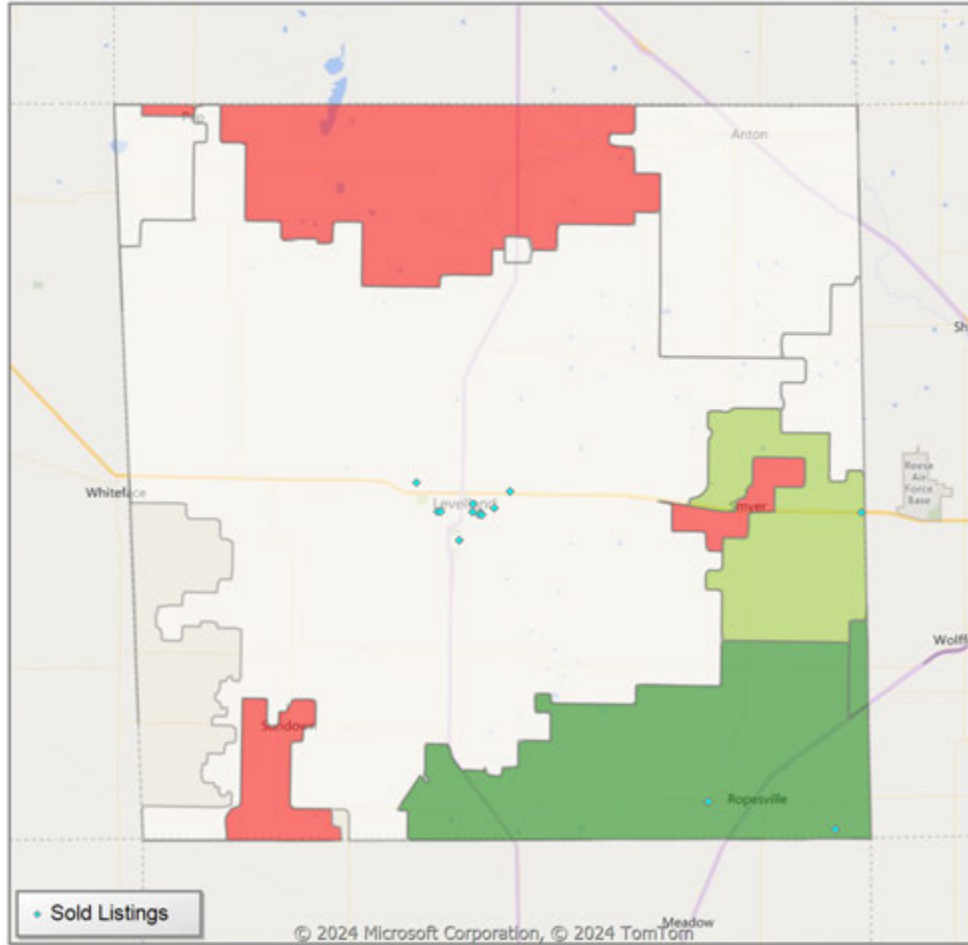
All (New and Existing) Construction



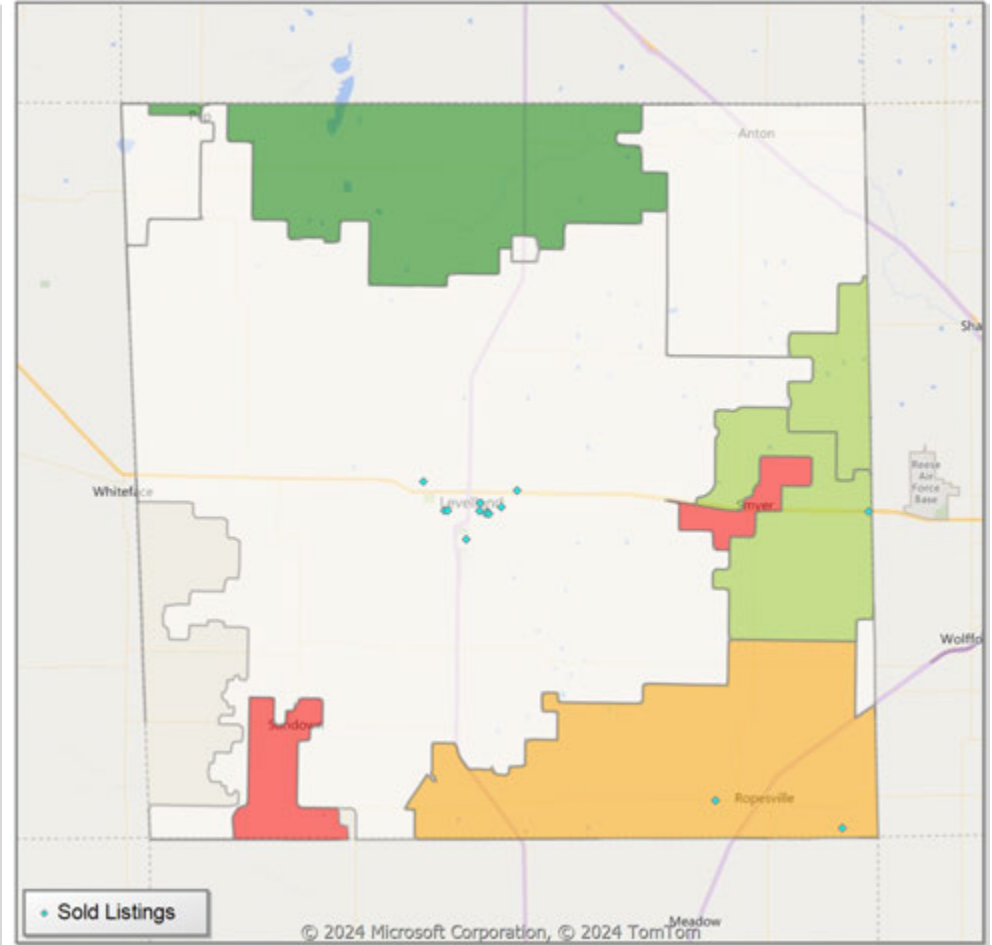
\* Closed Sale counts for most recent 3 months are Preliminary.

**Comparison By Zip Code\* in Hockley County**

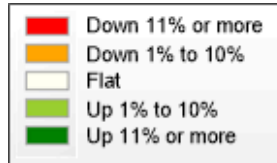
**Residential\*\* Closed Sales  
YoY Percentage Change**



**Residential\*\* Avg Close Price Per SqFt  
YoY Percentage Change**

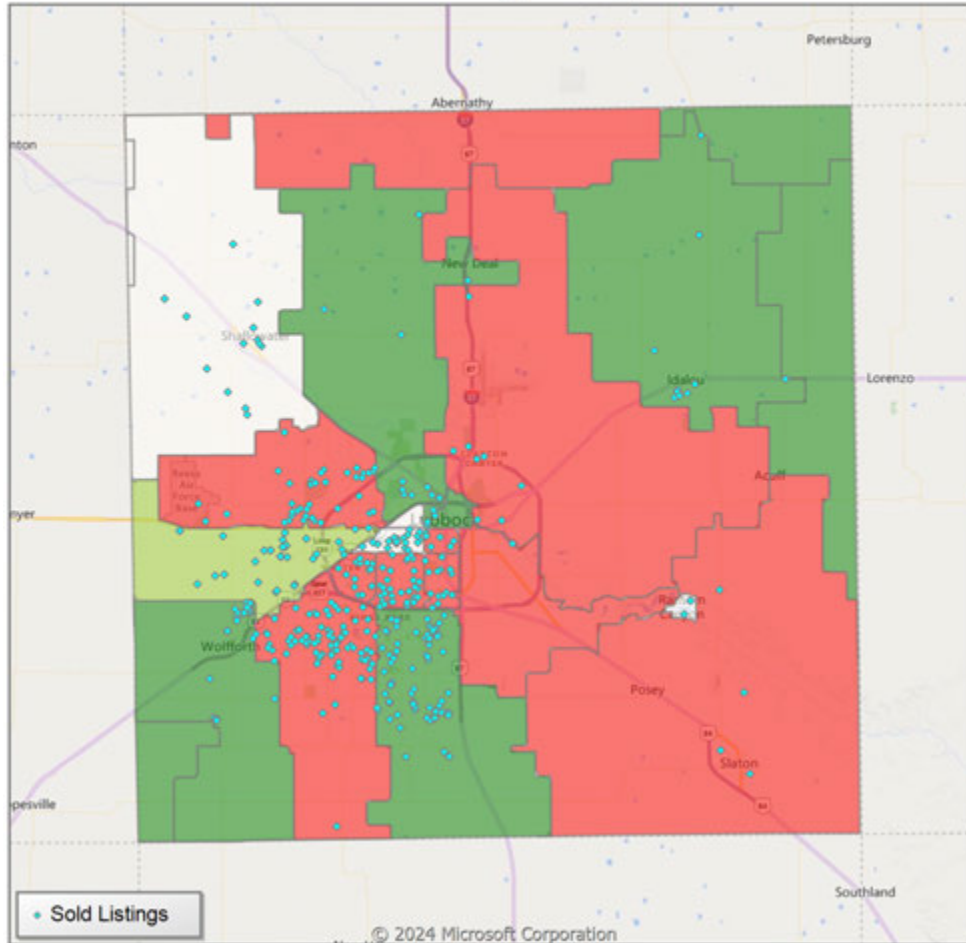


\* US Census Zip Code Tabulation Area  
\*\* Residential includes Single Family, Condominium and Townhouse.

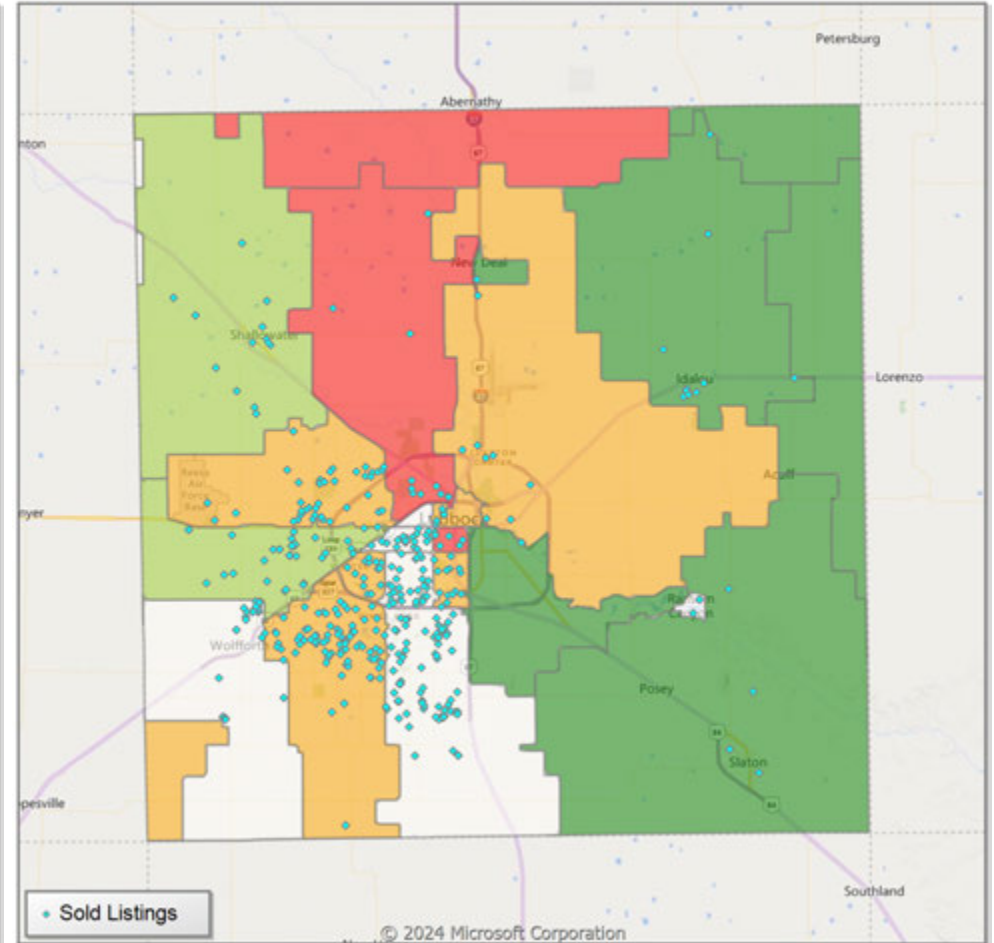


**Comparison By Zip Code\* in Lubbock County**

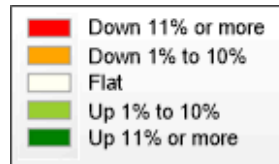
**Residential\*\* Closed Sales  
YoY Percentage Change**



**Residential\*\* Avg Close Price Per SqFt  
YoY Percentage Change**

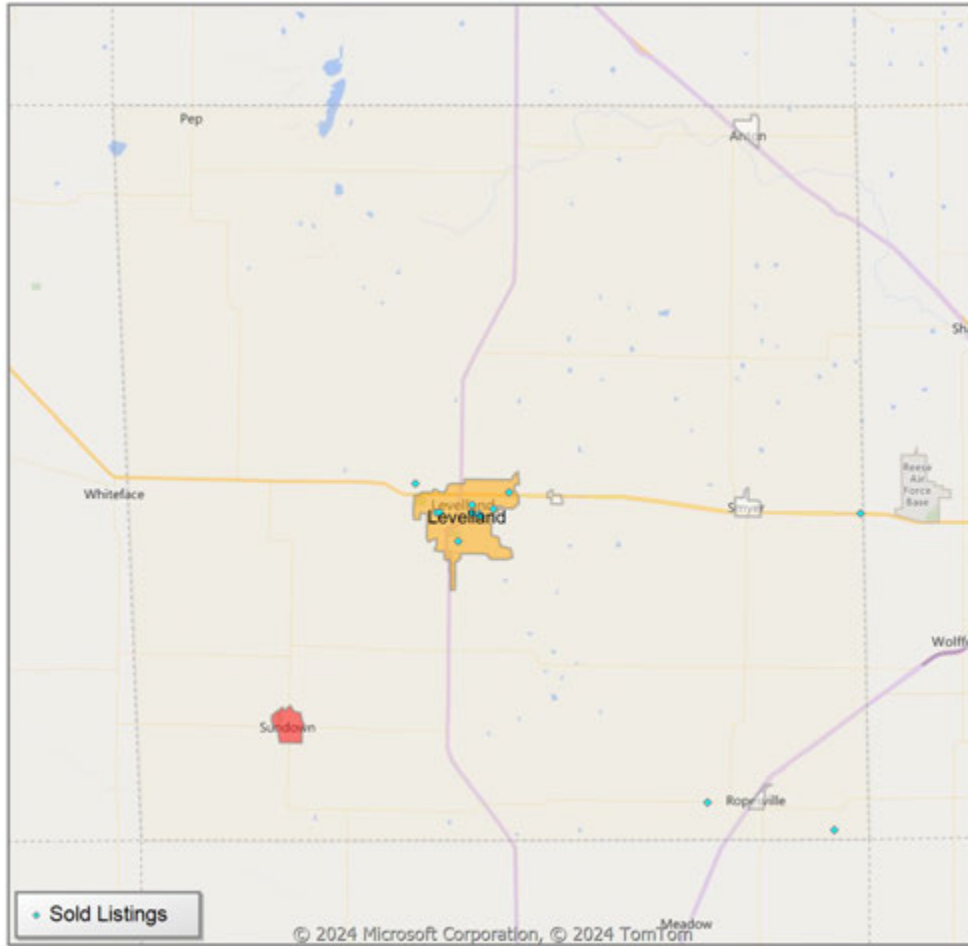


\* US Census Zip Code Tabulation Area  
\*\* Residential includes Single Family, Condominium and Townhouse.

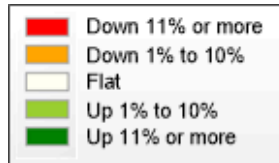
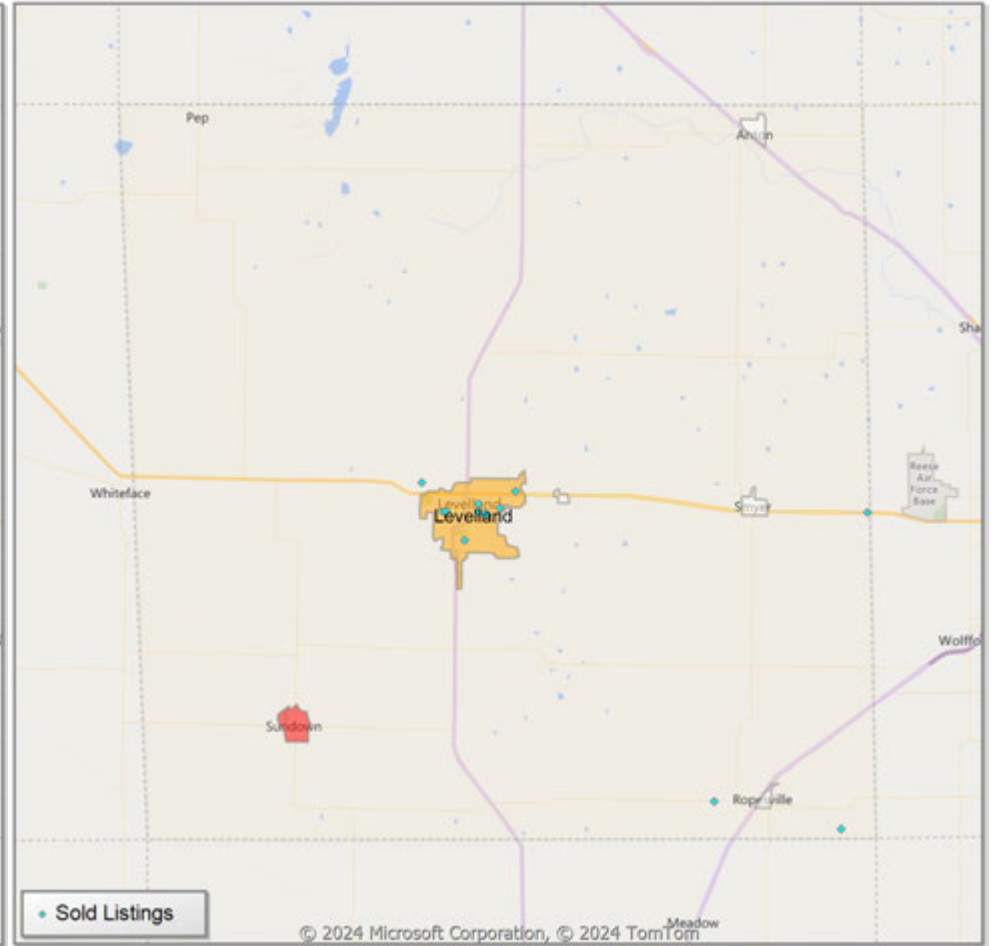


**Comparison By Local Market Area\* in Hockley County**

**Residential\*\* Closed Sales  
YoY Percentage Change**



**Residential\*\* Avg Close Price Per SqFt  
YoY Percentage Change**

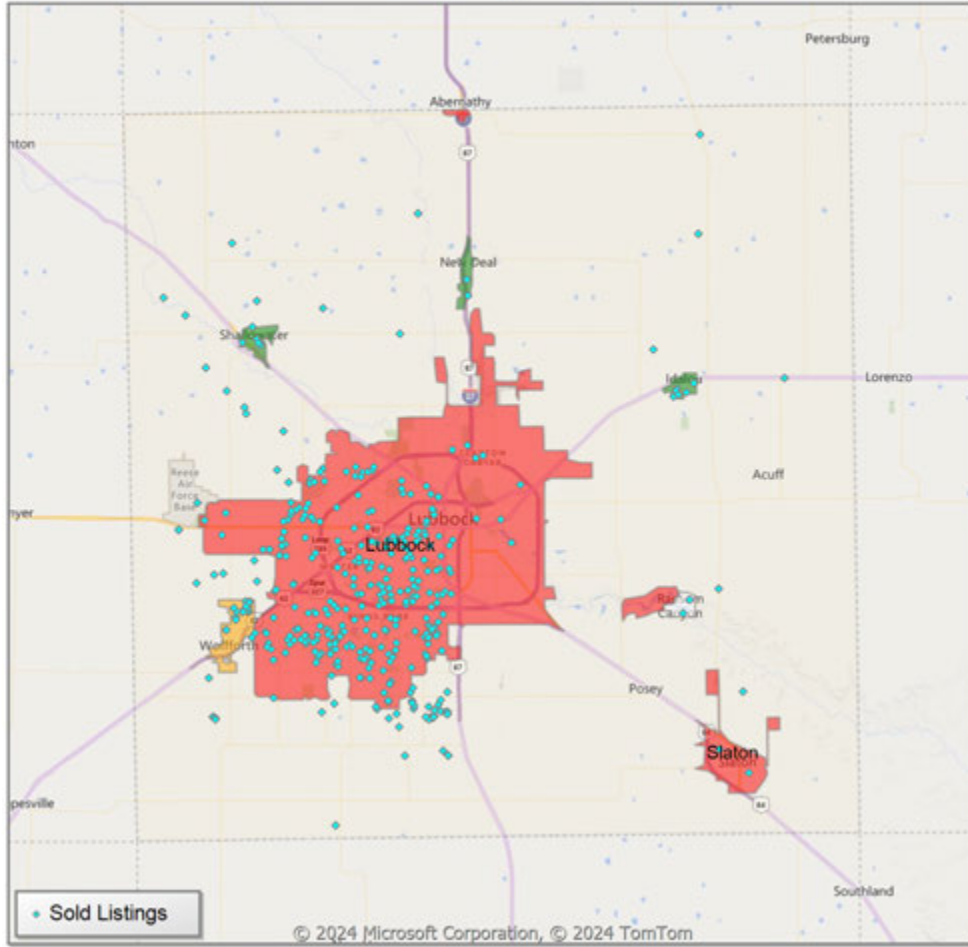


\* Census Place Group

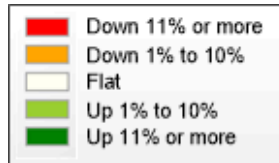
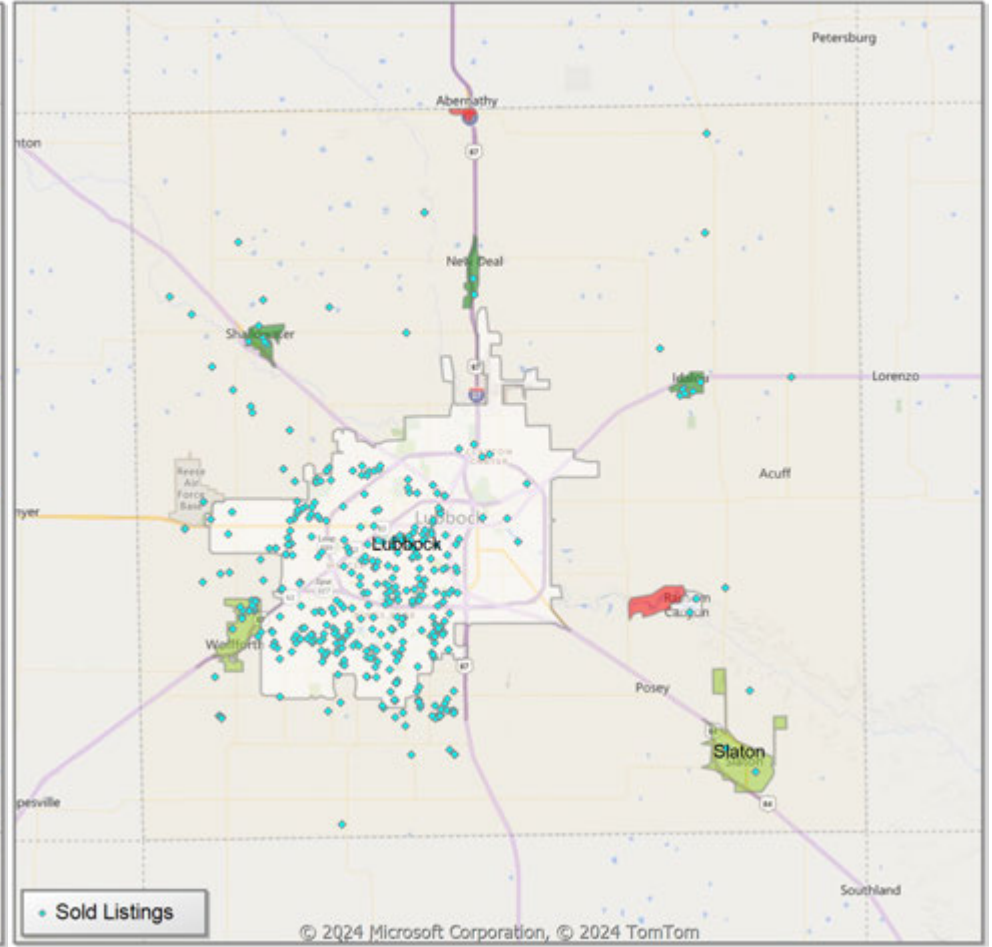
\*\* Residential includes Single Family, Condominium and Townhouse.

**Comparison By Local Market Area\* in Lubbock County**

**Residential\*\* Closed Sales  
YoY Percentage Change**



**Residential\*\* Avg Close Price Per SqFt  
YoY Percentage Change**



\* Census Place Group

\*\* Residential includes Single Family, Condominium and Townhouse.



Market Analysis By Local Market Area\*: Abernathy

Property Type	Closed Sales**	YoY%	Dollar Volume	YoY%	Average Price	YoY%	Median Price	YoY%	Price/Sqft	YoY%	DOM	New Listings	Active Listings	Pending Sales	Months Inventory	Close To OLP
<b>All(New and Existing)</b>																
Residential (SF/COND/TH)	1	-66.7%	\$85,000	-75.3%	\$85,000	-25.8%	\$85,000	-28.0%	\$66	-15.9%	91	6	10	1	6.3	95.5%
YTD:	7	-30.0%	\$1,241,000	-47.2%	\$177,286	-24.5%	\$165,000	-29.9%	\$106	4.4%	39	29	9	10		95.9%
Single Family	1	-66.7%	\$85,000	-75.3%	\$85,000	-25.8%	\$85,000	-28.0%	\$66	-15.9%	91	6	10	1	6.3	95.5%
YTD:	7	-30.0%	\$1,241,000	-47.2%	\$177,286	-24.5%	\$165,000	-29.9%	\$106	4.4%	39	29	9	10		95.9%
Townhouse	-	0.0%	-	0.0%	-	0.0%	-	0.0%	-	0.0%	-	-	-	-	-	0.0%
YTD:	-	0.0%	-	0.0%	-	0.0%	-	0.0%	-	0.0%	-	-	-	-	-	0.0%
Condominium	-	0.0%	-	0.0%	-	0.0%	-	0.0%	-	0.0%	-	-	-	-	-	0.0%
YTD:	-	0.0%	-	0.0%	-	0.0%	-	0.0%	-	0.0%	-	-	-	-	-	0.0%
<b>Existing Home</b>																
Residential (SF/COND/TH)	1	-66.7%	\$85,000	-75.3%	\$85,000	-25.8%	\$85,000	-28.0%	\$66	-15.9%	91	5	10	1	6.3	95.5%
YTD:	7	-30.0%	\$1,241,000	-47.2%	\$177,286	-24.5%	\$165,000	-29.9%	\$106	4.4%	39	28	9	10		95.9%
Single Family	1	-66.7%	\$85,000	-75.3%	\$85,000	-25.8%	\$85,000	-28.0%	\$66	-15.9%	91	5	10	1	6.3	95.5%
YTD:	7	-30.0%	\$1,241,000	-47.2%	\$177,286	-24.5%	\$165,000	-29.9%	\$106	4.4%	39	28	9	10		95.9%
Townhouse	-	0.0%	-	0.0%	-	0.0%	-	0.0%	-	0.0%	-	-	-	-	-	0.0%
YTD:	-	0.0%	-	0.0%	-	0.0%	-	0.0%	-	0.0%	-	-	-	-	-	0.0%
Condominium	-	0.0%	-	0.0%	-	0.0%	-	0.0%	-	0.0%	-	-	-	-	-	0.0%
YTD:	-	0.0%	-	0.0%	-	0.0%	-	0.0%	-	0.0%	-	-	-	-	-	0.0%
<b>New Construction</b>																
Residential (SF/COND/TH)	-	0.0%	-	0.0%	-	0.0%	-	0.0%	-	0.0%	-	1	-	-	-	0.0%
YTD:	-	0.0%	-	0.0%	-	0.0%	-	0.0%	-	0.0%	-	1	-	-	-	0.0%
Single Family	-	0.0%	-	0.0%	-	0.0%	-	0.0%	-	0.0%	-	1	-	-	-	0.0%
YTD:	-	0.0%	-	0.0%	-	0.0%	-	0.0%	-	0.0%	-	1	-	-	-	0.0%
Townhouse	-	0.0%	-	0.0%	-	0.0%	-	0.0%	-	0.0%	-	-	-	-	-	0.0%
YTD:	-	0.0%	-	0.0%	-	0.0%	-	0.0%	-	0.0%	-	-	-	-	-	0.0%
Condominium	-	0.0%	-	0.0%	-	0.0%	-	0.0%	-	0.0%	-	-	-	-	-	0.0%
YTD:	-	0.0%	-	0.0%	-	0.0%	-	0.0%	-	0.0%	-	-	-	-	-	0.0%

\* Local Market Area Code: 2; Type: Census Place Group  
 \*\* Closed Sale counts for most recent 3 months are Preliminary.

Market Analysis By Local Market Area\*: Anton

Property Type	Closed Sales**	YoY%	Dollar Volume	YoY%	Average Price	YoY%	Median Price	YoY%	Price/Sqft	YoY%	DOM	New Listings	Active Listings	Pending Sales	Months Inventory	Close To OLP
<b>All(New and Existing)</b>																
Residential (SF/COND/TH)	-	0.0%	-	0.0%	-	0.0%	-	0.0%	-	0.0%	-	-	5	1	8.6	0.0%
YTD:	2	-60.0%	\$245,000	-54.5%	\$122,500	13.7%	\$122,500	27.6%	\$91	29.8%	40	7	5	3		96.6%
Single Family	-	0.0%	-	0.0%	-	0.0%	-	0.0%	-	0.0%	-	-	5	1	8.6	0.0%
YTD:	2	-60.0%	\$245,000	-54.5%	\$122,500	13.7%	\$122,500	27.6%	\$91	29.8%	40	7	5	3		96.6%
Townhouse	-	0.0%	-	0.0%	-	0.0%	-	0.0%	-	0.0%	-	-	-	-	-	0.0%
YTD:	-	0.0%	-	0.0%	-	0.0%	-	0.0%	-	0.0%	-	-	-	-	-	0.0%
Condominium	-	0.0%	-	0.0%	-	0.0%	-	0.0%	-	0.0%	-	-	-	-	-	0.0%
YTD:	-	0.0%	-	0.0%	-	0.0%	-	0.0%	-	0.0%	-	-	-	-	-	0.0%
<b>Existing Home</b>																
Residential (SF/COND/TH)	-	0.0%	-	0.0%	-	0.0%	-	0.0%	-	0.0%	-	-	5	1	8.6	0.0%
YTD:	2	-60.0%	\$245,000	-54.5%	\$122,500	13.7%	\$122,500	27.6%	\$91	29.8%	40	7	5	3		96.6%
Single Family	-	0.0%	-	0.0%	-	0.0%	-	0.0%	-	0.0%	-	-	5	1	8.6	0.0%
YTD:	2	-60.0%	\$245,000	-54.5%	\$122,500	13.7%	\$122,500	27.6%	\$91	29.8%	40	7	5	3		96.6%
Townhouse	-	0.0%	-	0.0%	-	0.0%	-	0.0%	-	0.0%	-	-	-	-	-	0.0%
YTD:	-	0.0%	-	0.0%	-	0.0%	-	0.0%	-	0.0%	-	-	-	-	-	0.0%
Condominium	-	0.0%	-	0.0%	-	0.0%	-	0.0%	-	0.0%	-	-	-	-	-	0.0%
YTD:	-	0.0%	-	0.0%	-	0.0%	-	0.0%	-	0.0%	-	-	-	-	-	0.0%
<b>New Construction</b>																
Residential (SF/COND/TH)	-	0.0%	-	0.0%	-	0.0%	-	0.0%	-	0.0%	-	-	-	-	-	0.0%
YTD:	-	0.0%	-	0.0%	-	0.0%	-	0.0%	-	0.0%	-	-	-	-	-	0.0%
Single Family	-	0.0%	-	0.0%	-	0.0%	-	0.0%	-	0.0%	-	-	-	-	-	0.0%
YTD:	-	0.0%	-	0.0%	-	0.0%	-	0.0%	-	0.0%	-	-	-	-	-	0.0%
Townhouse	-	0.0%	-	0.0%	-	0.0%	-	0.0%	-	0.0%	-	-	-	-	-	0.0%
YTD:	-	0.0%	-	0.0%	-	0.0%	-	0.0%	-	0.0%	-	-	-	-	-	0.0%
Condominium	-	0.0%	-	0.0%	-	0.0%	-	0.0%	-	0.0%	-	-	-	-	-	0.0%
YTD:	-	0.0%	-	0.0%	-	0.0%	-	0.0%	-	0.0%	-	-	-	-	-	0.0%

\* Local Market Area Code: 1014; Type: Census Place Group  
 \*\* Closed Sale counts for most recent 3 months are Preliminary.

Market Analysis By Local Market Area\*: Buffalo Springs

Property Type	Closed Sales**	YoY%	Dollar Volume	YoY%	Average Price	YoY%	Median Price	YoY%	Price/Sqft	YoY%	DOM	New Listings	Active Listings	Pending Sales	Months Inventory	Close To OLP
<b>All(New and Existing)</b>																
Residential (SF/COND/TH)	-	-100.0%	-	-100.0%	-	-100.0%	-	-100.0%	-	-100.0%	-	4	6	1	7.2	0.0%
<b>YTD:</b>	9	28.6%	\$2,443,500	29.6%	\$271,500	0.8%	\$250,000	-15.3%	\$161	0.3%	38	17	3	9		93.5%
Single Family	-	-100.0%	-	-100.0%	-	-100.0%	-	-100.0%	-	-100.0%	-	4	6	1	7.2	0.0%
<b>YTD:</b>	9	28.6%	\$2,443,500	29.6%	\$271,500	0.8%	\$250,000	-15.3%	\$161	0.3%	38	17	3	9		93.5%
Townhouse	-	0.0%	-	0.0%	-	0.0%	-	0.0%	-	0.0%	-	-	-	-	-	0.0%
<b>YTD:</b>	-	0.0%	-	0.0%	-	0.0%	-	0.0%	-	0.0%	-	-	-	-	-	0.0%
Condominium	-	0.0%	-	0.0%	-	0.0%	-	0.0%	-	0.0%	-	-	-	-	-	0.0%
<b>YTD:</b>	-	0.0%	-	0.0%	-	0.0%	-	0.0%	-	0.0%	-	-	-	-	-	0.0%
<b>Existing Home</b>																
Residential (SF/COND/TH)	-	-100.0%	-	-100.0%	-	-100.0%	-	-100.0%	-	-100.0%	-	4	6	1	7.2	0.0%
<b>YTD:</b>	9	28.6%	\$2,443,500	29.6%	\$271,500	0.8%	\$250,000	-15.3%	\$161	0.3%	38	17	3	9		93.5%
Single Family	-	-100.0%	-	-100.0%	-	-100.0%	-	-100.0%	-	-100.0%	-	4	6	1	7.2	0.0%
<b>YTD:</b>	9	28.6%	\$2,443,500	29.6%	\$271,500	0.8%	\$250,000	-15.3%	\$161	0.3%	38	17	3	9		93.5%
Townhouse	-	0.0%	-	0.0%	-	0.0%	-	0.0%	-	0.0%	-	-	-	-	-	0.0%
<b>YTD:</b>	-	0.0%	-	0.0%	-	0.0%	-	0.0%	-	0.0%	-	-	-	-	-	0.0%
Condominium	-	0.0%	-	0.0%	-	0.0%	-	0.0%	-	0.0%	-	-	-	-	-	0.0%
<b>YTD:</b>	-	0.0%	-	0.0%	-	0.0%	-	0.0%	-	0.0%	-	-	-	-	-	0.0%
<b>New Construction</b>																
Residential (SF/COND/TH)	-	0.0%	-	0.0%	-	0.0%	-	0.0%	-	0.0%	-	-	-	-	-	0.0%
<b>YTD:</b>	-	0.0%	-	0.0%	-	0.0%	-	0.0%	-	0.0%	-	-	-	-	-	0.0%
Single Family	-	0.0%	-	0.0%	-	0.0%	-	0.0%	-	0.0%	-	-	-	-	-	0.0%
<b>YTD:</b>	-	0.0%	-	0.0%	-	0.0%	-	0.0%	-	0.0%	-	-	-	-	-	0.0%
Townhouse	-	0.0%	-	0.0%	-	0.0%	-	0.0%	-	0.0%	-	-	-	-	-	0.0%
<b>YTD:</b>	-	0.0%	-	0.0%	-	0.0%	-	0.0%	-	0.0%	-	-	-	-	-	0.0%
Condominium	-	0.0%	-	0.0%	-	0.0%	-	0.0%	-	0.0%	-	-	-	-	-	0.0%
<b>YTD:</b>	-	0.0%	-	0.0%	-	0.0%	-	0.0%	-	0.0%	-	-	-	-	-	0.0%

\* Local Market Area Code: 135; Type: Census Place Group  
 \*\* Closed Sale counts for most recent 3 months are Preliminary.

Market Analysis By Local Market Area\*: Idalou

Property Type	Closed Sales**	YoY%	Dollar Volume	YoY%	Average Price	YoY%	Median Price	YoY%	Price/Sqft	YoY%	DOM	New Listings	Active Listings	Pending Sales	Months Inventory	Close To OLP
<b>All(New and Existing)</b>																
Residential (SF/COND/TH)	6	200.0%	\$1,656,000	387.8%	\$276,000	62.6%	\$217,500	28.1%	\$135	21.5%	31	3	3	1	1.7	88.9%
<b>YTD:</b>	17	88.9%	\$4,004,000	74.2%	\$235,529	-7.8%	\$205,000	-22.6%	\$121	-9.8%	50	18	4	15		89.1%
Single Family	6	200.0%	\$1,656,000	387.8%	\$276,000	62.6%	\$217,500	28.1%	\$135	21.5%	31	3	3	1	1.7	88.9%
<b>YTD:</b>	17	88.9%	\$4,004,000	74.2%	\$235,529	-7.8%	\$205,000	-22.6%	\$121	-9.8%	50	18	4	15		89.1%
Townhouse	-	0.0%	-	0.0%	-	0.0%	-	0.0%	-	0.0%	-	-	-	-	-	0.0%
<b>YTD:</b>	-	0.0%	-	0.0%	-	0.0%	-	0.0%	-	0.0%	-	-	-	-	-	0.0%
Condominium	-	0.0%	-	0.0%	-	0.0%	-	0.0%	-	0.0%	-	-	-	-	-	0.0%
<b>YTD:</b>	-	0.0%	-	0.0%	-	0.0%	-	0.0%	-	0.0%	-	-	-	-	-	0.0%
<b>Existing Home</b>																
Residential (SF/COND/TH)	6	200.0%	\$1,656,000	387.8%	\$276,000	62.6%	\$217,500	28.1%	\$135	21.5%	31	3	3	1	1.7	88.9%
<b>YTD:</b>	17	112.5%	\$4,004,000	94.5%	\$235,529	-8.5%	\$205,000	-22.6%	\$121	-5.0%	50	18	4	15		89.1%
Single Family	6	200.0%	\$1,656,000	387.8%	\$276,000	62.6%	\$217,500	28.1%	\$135	21.5%	31	3	3	1	1.7	88.9%
<b>YTD:</b>	17	112.5%	\$4,004,000	94.5%	\$235,529	-8.5%	\$205,000	-22.6%	\$121	-5.0%	50	18	4	15		89.1%
Townhouse	-	0.0%	-	0.0%	-	0.0%	-	0.0%	-	0.0%	-	-	-	-	-	0.0%
<b>YTD:</b>	-	0.0%	-	0.0%	-	0.0%	-	0.0%	-	0.0%	-	-	-	-	-	0.0%
Condominium	-	0.0%	-	0.0%	-	0.0%	-	0.0%	-	0.0%	-	-	-	-	-	0.0%
<b>YTD:</b>	-	0.0%	-	0.0%	-	0.0%	-	0.0%	-	0.0%	-	-	-	-	-	0.0%
<b>New Construction</b>																
Residential (SF/COND/TH)	-	0.0%	-	0.0%	-	0.0%	-	0.0%	-	0.0%	-	-	-	-	-	0.0%
<b>YTD:</b>	-	-100.0%	-	-100.0%	-	-100.0%	-	-100.0%	-	-100.0%	-	-	-	-	-	0.0%
Single Family	-	0.0%	-	0.0%	-	0.0%	-	0.0%	-	0.0%	-	-	-	-	-	0.0%
<b>YTD:</b>	-	-100.0%	-	-100.0%	-	-100.0%	-	-100.0%	-	-100.0%	-	-	-	-	-	0.0%
Townhouse	-	0.0%	-	0.0%	-	0.0%	-	0.0%	-	0.0%	-	-	-	-	-	0.0%
<b>YTD:</b>	-	0.0%	-	0.0%	-	0.0%	-	0.0%	-	0.0%	-	-	-	-	-	0.0%
Condominium	-	0.0%	-	0.0%	-	0.0%	-	0.0%	-	0.0%	-	-	-	-	-	0.0%
<b>YTD:</b>	-	0.0%	-	0.0%	-	0.0%	-	0.0%	-	0.0%	-	-	-	-	-	0.0%

\* Local Market Area Code: 456; Type: Census Place Group  
 \*\* Closed Sale counts for most recent 3 months are Preliminary.

Market Analysis By Local Market Area\*: Levelland

Property Type	Closed Sales**	YoY%	Dollar Volume	YoY%	Average Price	YoY%	Median Price	YoY%	Price/Sqft	YoY%	DOM	New Listings	Active Listings	Pending Sales	Months Inventory	Close To OLP
<b>All(New and Existing)</b>																
Residential (SF/COND/TH)	11	-8.3%	\$2,032,700	-22.6%	\$184,791	-15.5%	\$200,000	-11.7%	\$95	-3.7%	26	11	35	9	3.1	64.0%
YTD:	87	20.8%	\$15,862,099	10.8%	\$182,323	-8.3%	\$185,900	-9.9%	\$94	-3.3%	67	116	37	84		92.1%
Single Family	11	-8.3%	\$2,032,700	-22.6%	\$184,791	-15.5%	\$200,000	-11.7%	\$95	-3.7%	26	11	35	9	3.2	64.0%
YTD:	86	19.4%	\$15,722,099	9.9%	\$182,815	-8.0%	\$187,450	-9.1%	\$95	-2.3%	64	116	36	83		92.6%
Townhouse	-	0.0%	-	0.0%	-	0.0%	-	0.0%	-	0.0%	-	-	-	-	-	0.0%
YTD:	-	0.0%	-	0.0%	-	0.0%	-	0.0%	-	0.0%	-	-	-	-	-	0.0%
Condominium	-	0.0%	-	0.0%	-	0.0%	-	0.0%	-	0.0%	-	-	-	-	-	0.0%
YTD:	1	100.0%	\$140,000	100.0%	\$140,000	100.0%	\$140,000	100.0%	\$7	100.0%	255	-	1	1		58.6%
<b>Existing Home</b>																
Residential (SF/COND/TH)	11	-8.3%	\$2,032,700	-22.6%	\$184,791	-15.5%	\$200,000	-11.7%	\$95	-3.7%	26	11	34	9	3.1	64.0%
YTD:	86	19.4%	\$15,627,099	9.2%	\$181,710	-8.6%	\$185,450	-10.1%	\$93	-3.8%	66	115	36	83		92.0%
Single Family	11	-8.3%	\$2,032,700	-22.6%	\$184,791	-15.5%	\$200,000	-11.7%	\$95	-3.7%	26	11	34	9	3.1	64.0%
YTD:	85	18.1%	\$15,487,099	8.2%	\$182,201	-8.3%	\$185,900	-9.9%	\$94	-2.8%	64	115	35	82		92.5%
Townhouse	-	0.0%	-	0.0%	-	0.0%	-	0.0%	-	0.0%	-	-	-	-	-	0.0%
YTD:	-	0.0%	-	0.0%	-	0.0%	-	0.0%	-	0.0%	-	-	-	-	-	0.0%
Condominium	-	0.0%	-	0.0%	-	0.0%	-	0.0%	-	0.0%	-	-	-	-	-	0.0%
YTD:	1	100.0%	\$140,000	100.0%	\$140,000	100.0%	\$140,000	100.0%	\$7	100.0%	255	-	1	1		58.6%
<b>New Construction</b>																
Residential (SF/COND/TH)	-	0.0%	-	0.0%	-	0.0%	-	0.0%	-	0.0%	-	-	1	-	12.0	0.0%
YTD:	1	100.0%	\$235,000	100.0%	\$235,000	100.0%	\$235,000	100.0%	\$134	100.0%	133	1	1	1		98.1%
Single Family	-	0.0%	-	0.0%	-	0.0%	-	0.0%	-	0.0%	-	-	1	-	12.0	0.0%
YTD:	1	100.0%	\$235,000	100.0%	\$235,000	100.0%	\$235,000	100.0%	\$134	100.0%	133	1	1	1		98.1%
Townhouse	-	0.0%	-	0.0%	-	0.0%	-	0.0%	-	0.0%	-	-	-	-	-	0.0%
YTD:	-	0.0%	-	0.0%	-	0.0%	-	0.0%	-	0.0%	-	-	-	-	-	0.0%
Condominium	-	0.0%	-	0.0%	-	0.0%	-	0.0%	-	0.0%	-	-	-	-	-	0.0%
YTD:	-	0.0%	-	0.0%	-	0.0%	-	0.0%	-	0.0%	-	-	-	-	-	0.0%

\* Local Market Area Code: 220; Type: Census Place Group  
 \*\* Closed Sale counts for most recent 3 months are Preliminary.

Market Analysis By Local Market Area\*: Lubbock

Property Type	Closed Sales**	YoY%	Dollar Volume	YoY%	Average Price	YoY%	Median Price	YoY%	Price/Sqft	YoY%	DOM	New Listings	Active Listings	Pending Sales	Months Inventory	Close To OLP
<b>All(New and Existing)</b>																
Residential (SF/COND/TH)	305	-14.8%	\$81,166,055	-14.4%	\$266,118	0.5%	\$220,000	-4.4%	\$132	-0.9%	41	574	1,130	303	4.3	89.4%
YTD:	1,931	-8.6%	\$503,342,125	-7.8%	\$260,664	0.9%	\$222,422	-1.6%	\$130	-0.5%	42	4,015	992	2,092		95.3%
Single Family	290	-15.9%	\$78,153,114	-15.4%	\$269,493	0.7%	\$224,999	-3.2%	\$132	-1.2%	40	557	1,062	292	4.2	89.3%
YTD:	1,848	-9.7%	\$483,641,522	-8.9%	\$261,711	0.9%	\$225,000	-1.9%	\$130	-0.7%	41	3,828	924	2,002		95.4%
Townhouse	10	0.0%	\$1,891,200	0.8%	\$189,120	0.8%	\$194,350	8.0%	\$123	-2.2%	69	14	56	10	7.1	91.0%
YTD:	66	17.9%	\$13,140,500	16.2%	\$199,098	-1.4%	\$195,000	-3.6%	\$132	1.6%	88	150	57	74		93.4%
Condominium	4	33.3%	\$886,000	58.8%	\$221,500	19.1%	\$242,000	49.4%	\$153	51.1%	26	3	12	1	6.0	0.0%
YTD:	16	45.5%	\$6,312,000	78.5%	\$394,500	22.7%	\$214,000	-2.7%	\$147	11.7%	28	37	9	16		95.1%
<b>Existing Home</b>																
Residential (SF/COND/TH)	277	-12.6%	\$73,034,650	-8.1%	\$263,663	5.2%	\$218,000	-0.9%	\$130	1.2%	40	495	1,010	263	4.4	88.1%
YTD:	1,700	-7.4%	\$436,671,734	-3.0%	\$256,866	4.8%	\$218,250	1.4%	\$127	1.1%	39	3,595	866	1,827		95.0%
Single Family	268	-12.7%	\$71,317,162	-8.2%	\$266,109	5.1%	\$220,000	-1.4%	\$130	0.8%	40	478	947	256	4.2	88.2%
YTD:	1,655	-7.4%	\$424,800,217	-3.3%	\$256,677	4.5%	\$220,000	1.9%	\$127	1.1%	38	3,443	817	1,774		95.1%
Townhouse	5	-28.6%	\$853,500	-30.5%	\$170,700	-2.6%	\$177,500	-1.4%	\$110	-6.3%	61	14	51	6	16.5	85.1%
YTD:	29	-21.6%	\$5,557,250	-24.1%	\$191,629	-3.2%	\$165,000	-9.3%	\$116	-7.0%	59	115	39	37		89.9%
Condominium	4	33.3%	\$886,000	58.8%	\$221,500	19.1%	\$242,000	49.4%	\$153	51.1%	26	3	12	1	6.0	0.0%
YTD:	16	45.5%	\$6,312,000	78.5%	\$394,500	22.7%	\$214,000	-2.7%	\$147	11.7%	28	37	8	16		95.1%
<b>New Construction</b>																
Residential (SF/COND/TH)	28	-31.7%	\$8,133,679	-46.8%	\$290,489	-22.1%	\$250,000	-23.3%	\$153	-10.2%	49	79	120	40	3.4	96.7%
YTD:	231	-16.6%	\$66,652,688	-30.2%	\$288,540	-16.3%	\$256,500	-14.9%	\$154	-7.1%	68	420	125	265		97.4%
Single Family	23	-39.5%	\$7,114,830	-51.4%	\$309,340	-19.7%	\$260,991	-23.0%	\$157	-8.9%	43	79	115	36	3.8	96.7%
YTD:	194	-24.8%	\$59,085,462	-35.5%	\$304,564	-14.2%	\$267,600	-14.6%	\$156	-7.1%	59	385	107	228		97.8%
Townhouse	5	66.7%	\$1,037,700	59.9%	\$207,540	-4.1%	\$212,250	-1.1%	\$135	-5.6%	76	-	5	4	1.1	96.8%
YTD:	37	94.7%	\$7,583,250	90.1%	\$204,953	-2.4%	\$205,000	-4.4%	\$145	3.1%	111	35	18	37		95.5%
Condominium	-	0.0%	-	0.0%	-	0.0%	-	0.0%	-	0.0%	-	-	-	-	-	0.0%
YTD:	-	0.0%	-	0.0%	-	0.0%	-	0.0%	-	0.0%	-	-	1	-		0.0%

\* Local Market Area Code: 596; Type: Census Place Group  
 \*\* Closed Sale counts for most recent 3 months are Preliminary.

Market Analysis By Local Market Area\*: New Deal

Property Type	Closed Sales**	YoY%	Dollar Volume	YoY%	Average Price	YoY%	Median Price	YoY%	Price/Sqft	YoY%	DOM	New Listings	Active Listings	Pending Sales	Months Inventory	Close To OLP
<b>All(New and Existing)</b>																
Residential (SF/COND/TH)	2	100.0%	\$344,500	100.0%	\$172,250	100.0%	\$172,250	100.0%	\$91	100.0%	136	2	3	1	5.1	95.5%
YTD:	5	66.7%	\$932,500	47.4%	\$186,500	-11.6%	\$194,500	-0.2%	\$106	2.9%	61	11	2	5		97.8%
Single Family	2	100.0%	\$344,500	100.0%	\$172,250	100.0%	\$172,250	100.0%	\$91	100.0%	136	2	3	1	5.1	95.5%
YTD:	5	66.7%	\$932,500	47.4%	\$186,500	-11.6%	\$194,500	-0.2%	\$106	2.9%	61	11	2	5		97.8%
Townhouse	-	0.0%	-	0.0%	-	0.0%	-	0.0%	-	0.0%	-	-	-	-	-	0.0%
YTD:	-	0.0%	-	0.0%	-	0.0%	-	0.0%	-	0.0%	-	-	-	-	-	0.0%
Condominium	-	0.0%	-	0.0%	-	0.0%	-	0.0%	-	0.0%	-	-	-	-	-	0.0%
YTD:	-	0.0%	-	0.0%	-	0.0%	-	0.0%	-	0.0%	-	-	-	-	-	0.0%
<b>Existing Home</b>																
Residential (SF/COND/TH)	2	100.0%	\$344,500	100.0%	\$172,250	100.0%	\$172,250	100.0%	\$91	100.0%	136	2	3	1	6.0	95.5%
YTD:	4	33.3%	\$684,500	8.2%	\$171,125	-18.9%	\$172,250	-11.6%	\$93	-9.9%	70	10	2	4		97.0%
Single Family	2	100.0%	\$344,500	100.0%	\$172,250	100.0%	\$172,250	100.0%	\$91	100.0%	136	2	3	1	6.0	95.5%
YTD:	4	33.3%	\$684,500	8.2%	\$171,125	-18.9%	\$172,250	-11.6%	\$93	-9.9%	70	10	2	4		97.0%
Townhouse	-	0.0%	-	0.0%	-	0.0%	-	0.0%	-	0.0%	-	-	-	-	-	0.0%
YTD:	-	0.0%	-	0.0%	-	0.0%	-	0.0%	-	0.0%	-	-	-	-	-	0.0%
Condominium	-	0.0%	-	0.0%	-	0.0%	-	0.0%	-	0.0%	-	-	-	-	-	0.0%
YTD:	-	0.0%	-	0.0%	-	0.0%	-	0.0%	-	0.0%	-	-	-	-	-	0.0%
<b>New Construction</b>																
Residential (SF/COND/TH)	-	0.0%	-	0.0%	-	0.0%	-	0.0%	-	0.0%	-	-	-	-	-	0.0%
YTD:	1	100.0%	\$248,000	100.0%	\$248,000	100.0%	\$248,000	100.0%	\$159	100.0%	25	1	1	1		100.2%
Single Family	-	0.0%	-	0.0%	-	0.0%	-	0.0%	-	0.0%	-	-	-	-	-	0.0%
YTD:	1	100.0%	\$248,000	100.0%	\$248,000	100.0%	\$248,000	100.0%	\$159	100.0%	25	1	1	1		100.2%
Townhouse	-	0.0%	-	0.0%	-	0.0%	-	0.0%	-	0.0%	-	-	-	-	-	0.0%
YTD:	-	0.0%	-	0.0%	-	0.0%	-	0.0%	-	0.0%	-	-	-	-	-	0.0%
Condominium	-	0.0%	-	0.0%	-	0.0%	-	0.0%	-	0.0%	-	-	-	-	-	0.0%
YTD:	-	0.0%	-	0.0%	-	0.0%	-	0.0%	-	0.0%	-	-	-	-	-	0.0%

\* Local Market Area Code: 700; Type: Census Place Group  
 \*\* Closed Sale counts for most recent 3 months are Preliminary.

Market Analysis By Local Market Area\*: Ransom Canyon

Property Type	Closed Sales**	YoY%	Dollar Volume	YoY%	Average Price	YoY%	Median Price	YoY%	Price/Sqft	YoY%	DOM	New Listings	Active Listings	Pending Sales	Months Inventory	Close To OLP
<b>All(New and Existing)</b>																
Residential (SF/COND/TH)	2	0.0%	\$705,000	-13.0%	\$352,500	-13.0%	\$352,500	-13.0%	\$167	-0.5%	36	3	15	2	6.2	0.0%
YTD:	21	50.0%	\$7,696,499	25.4%	\$366,500	-16.4%	\$345,000	-10.0%	\$147	-11.1%	62	45	14	22		95.2%
Single Family	2	0.0%	\$705,000	-13.0%	\$352,500	-13.0%	\$352,500	-13.0%	\$167	-0.5%	36	3	15	2	6.2	0.0%
YTD:	21	50.0%	\$7,696,499	25.4%	\$366,500	-16.4%	\$345,000	-10.0%	\$147	-11.1%	62	45	14	22		95.2%
Townhouse	-	0.0%	-	0.0%	-	0.0%	-	0.0%	-	0.0%	-	-	-	-	-	0.0%
YTD:	-	0.0%	-	0.0%	-	0.0%	-	0.0%	-	0.0%	-	-	-	-	-	0.0%
Condominium	-	0.0%	-	0.0%	-	0.0%	-	0.0%	-	0.0%	-	-	-	-	-	0.0%
YTD:	-	0.0%	-	0.0%	-	0.0%	-	0.0%	-	0.0%	-	-	-	-	-	0.0%
<b>Existing Home</b>																
Residential (SF/COND/TH)	2	100.0%	\$705,000	60.2%	\$352,500	-19.9%	\$352,500	-19.9%	\$167	2.2%	36	2	14	2	5.8	0.0%
YTD:	21	61.5%	\$7,696,499	33.5%	\$366,500	-17.4%	\$345,000	-11.1%	\$147	-10.8%	62	38	10	22		95.2%
Single Family	2	100.0%	\$705,000	60.2%	\$352,500	-19.9%	\$352,500	-19.9%	\$167	2.2%	36	2	14	2	5.8	0.0%
YTD:	21	61.5%	\$7,696,499	33.5%	\$366,500	-17.4%	\$345,000	-11.1%	\$147	-10.8%	62	38	10	22		95.2%
Townhouse	-	0.0%	-	0.0%	-	0.0%	-	0.0%	-	0.0%	-	-	-	-	-	0.0%
YTD:	-	0.0%	-	0.0%	-	0.0%	-	0.0%	-	0.0%	-	-	-	-	-	0.0%
Condominium	-	0.0%	-	0.0%	-	0.0%	-	0.0%	-	0.0%	-	-	-	-	-	0.0%
YTD:	-	0.0%	-	0.0%	-	0.0%	-	0.0%	-	0.0%	-	-	-	-	-	0.0%
<b>New Construction</b>																
Residential (SF/COND/TH)	-	-100.0%	-	-100.0%	-	-100.0%	-	-100.0%	-	-100.0%	-	1	1	-	-	0.0%
YTD:	-	-100.0%	-	-100.0%	-	-100.0%	-	-100.0%	-	-100.0%	-	7	3	-	-	0.0%
Single Family	-	-100.0%	-	-100.0%	-	-100.0%	-	-100.0%	-	-100.0%	-	1	1	-	-	0.0%
YTD:	-	-100.0%	-	-100.0%	-	-100.0%	-	-100.0%	-	-100.0%	-	7	3	-	-	0.0%
Townhouse	-	0.0%	-	0.0%	-	0.0%	-	0.0%	-	0.0%	-	-	-	-	-	0.0%
YTD:	-	0.0%	-	0.0%	-	0.0%	-	0.0%	-	0.0%	-	-	-	-	-	0.0%
Condominium	-	0.0%	-	0.0%	-	0.0%	-	0.0%	-	0.0%	-	-	-	-	-	0.0%
YTD:	-	0.0%	-	0.0%	-	0.0%	-	0.0%	-	0.0%	-	-	-	-	-	0.0%

\* Local Market Area Code: 826; Type: Census Place Group  
 \*\* Closed Sale counts for most recent 3 months are Preliminary.



Market Analysis By Local Market Area\*: Ropesville

Property Type	Closed Sales**	YoY%	Dollar Volume	YoY%	Average Price	YoY%	Median Price	YoY%	Price/Sqft	YoY%	DOM	New Listings	Active Listings	Pending Sales	Months Inventory	Close To OLP
<b>All(New and Existing)</b>																
Residential (SF/COND/TH)	-	0.0%	-	0.0%	-	0.0%	-	0.0%	-	0.0%	-	2	-	2	-	0.0%
YTD:	-	-100.0%	-	-100.0%	-	-100.0%	-	-100.0%	-	-100.0%	-	2	-	2	-	0.0%
Single Family	-	0.0%	-	0.0%	-	0.0%	-	0.0%	-	0.0%	-	2	-	2	-	0.0%
YTD:	-	-100.0%	-	-100.0%	-	-100.0%	-	-100.0%	-	-100.0%	-	2	-	2	-	0.0%
Townhouse	-	0.0%	-	0.0%	-	0.0%	-	0.0%	-	0.0%	-	-	-	-	-	0.0%
YTD:	-	0.0%	-	0.0%	-	0.0%	-	0.0%	-	0.0%	-	-	-	-	-	0.0%
Condominium	-	0.0%	-	0.0%	-	0.0%	-	0.0%	-	0.0%	-	-	-	-	-	0.0%
YTD:	-	0.0%	-	0.0%	-	0.0%	-	0.0%	-	0.0%	-	-	-	-	-	0.0%
<b>Existing Home</b>																
Residential (SF/COND/TH)	-	0.0%	-	0.0%	-	0.0%	-	0.0%	-	0.0%	-	2	-	2	-	0.0%
YTD:	-	-100.0%	-	-100.0%	-	-100.0%	-	-100.0%	-	-100.0%	-	2	-	2	-	0.0%
Single Family	-	0.0%	-	0.0%	-	0.0%	-	0.0%	-	0.0%	-	2	-	2	-	0.0%
YTD:	-	-100.0%	-	-100.0%	-	-100.0%	-	-100.0%	-	-100.0%	-	2	-	2	-	0.0%
Townhouse	-	0.0%	-	0.0%	-	0.0%	-	0.0%	-	0.0%	-	-	-	-	-	0.0%
YTD:	-	0.0%	-	0.0%	-	0.0%	-	0.0%	-	0.0%	-	-	-	-	-	0.0%
Condominium	-	0.0%	-	0.0%	-	0.0%	-	0.0%	-	0.0%	-	-	-	-	-	0.0%
YTD:	-	0.0%	-	0.0%	-	0.0%	-	0.0%	-	0.0%	-	-	-	-	-	0.0%
<b>New Construction</b>																
Residential (SF/COND/TH)	-	0.0%	-	0.0%	-	0.0%	-	0.0%	-	0.0%	-	-	-	-	-	0.0%
YTD:	-	-100.0%	-	-100.0%	-	-100.0%	-	-100.0%	-	-100.0%	-	-	-	-	-	0.0%
Single Family	-	0.0%	-	0.0%	-	0.0%	-	0.0%	-	0.0%	-	-	-	-	-	0.0%
YTD:	-	-100.0%	-	-100.0%	-	-100.0%	-	-100.0%	-	-100.0%	-	-	-	-	-	0.0%
Townhouse	-	0.0%	-	0.0%	-	0.0%	-	0.0%	-	0.0%	-	-	-	-	-	0.0%
YTD:	-	0.0%	-	0.0%	-	0.0%	-	0.0%	-	0.0%	-	-	-	-	-	0.0%
Condominium	-	0.0%	-	0.0%	-	0.0%	-	0.0%	-	0.0%	-	-	-	-	-	0.0%
YTD:	-	0.0%	-	0.0%	-	0.0%	-	0.0%	-	0.0%	-	-	-	-	-	0.0%

\* Local Market Area Code: 222; Type: Census Place Group  
 \*\* Closed Sale counts for most recent 3 months are Preliminary.

Market Analysis By Local Market Area\*: Shallowater

Property Type	Closed Sales**	YoY%	Dollar Volume	YoY%	Average Price	YoY%	Median Price	YoY%	Price/Sqft	YoY%	DOM	New Listings	Active Listings	Pending Sales	Months Inventory	Close To OLP
<b>All(New and Existing)</b>																
Residential (SF/COND/TH)	4	100.0%	\$619,750	26.2%	\$154,938	-36.9%	\$160,000	-34.8%	\$113	28.7%	28	10	16	5	5.3	0.0%
YTD:	25	47.1%	\$5,358,000	12.4%	\$214,320	-23.6%	\$230,000	-22.0%	\$121	-12.2%	51	63	14	33		94.9%
Single Family	4	100.0%	\$619,750	26.2%	\$154,938	-36.9%	\$160,000	-34.8%	\$113	28.7%	28	10	16	5	5.3	0.0%
YTD:	25	47.1%	\$5,358,000	12.4%	\$214,320	-23.6%	\$230,000	-22.0%	\$121	-12.2%	51	63	14	33		94.9%
Townhouse	-	0.0%	-	0.0%	-	0.0%	-	0.0%	-	0.0%	-	-	-	-	-	0.0%
YTD:	-	0.0%	-	0.0%	-	0.0%	-	0.0%	-	0.0%	-	-	-	-	-	0.0%
Condominium	-	0.0%	-	0.0%	-	0.0%	-	0.0%	-	0.0%	-	-	-	-	-	0.0%
YTD:	-	0.0%	-	0.0%	-	0.0%	-	0.0%	-	0.0%	-	-	-	-	-	0.0%
<b>Existing Home</b>																
Residential (SF/COND/TH)	4	100.0%	\$619,750	26.2%	\$154,938	-36.9%	\$160,000	-34.8%	\$113	28.7%	28	5	11	2	3.9	0.0%
YTD:	24	100.0%	\$5,088,000	71.6%	\$212,000	-14.2%	\$217,500	-8.4%	\$120	-5.9%	53	44	9	29		94.8%
Single Family	4	100.0%	\$619,750	26.2%	\$154,938	-36.9%	\$160,000	-34.8%	\$113	28.7%	28	5	11	2	3.9	0.0%
YTD:	24	100.0%	\$5,088,000	71.6%	\$212,000	-14.2%	\$217,500	-8.4%	\$120	-5.9%	53	44	9	29		94.8%
Townhouse	-	0.0%	-	0.0%	-	0.0%	-	0.0%	-	0.0%	-	-	-	-	-	0.0%
YTD:	-	0.0%	-	0.0%	-	0.0%	-	0.0%	-	0.0%	-	-	-	-	-	0.0%
Condominium	-	0.0%	-	0.0%	-	0.0%	-	0.0%	-	0.0%	-	-	-	-	-	0.0%
YTD:	-	0.0%	-	0.0%	-	0.0%	-	0.0%	-	0.0%	-	-	-	-	-	0.0%
<b>New Construction</b>																
Residential (SF/COND/TH)	-	0.0%	-	0.0%	-	0.0%	-	0.0%	-	0.0%	-	5	5	3	30.0	0.0%
YTD:	1	-80.0%	\$270,000	-85.0%	\$270,000	-25.0%	\$270,000	-20.6%	\$155	-5.4%	4	19	5	4		96.4%
Single Family	-	0.0%	-	0.0%	-	0.0%	-	0.0%	-	0.0%	-	5	5	3	30.0	0.0%
YTD:	1	-80.0%	\$270,000	-85.0%	\$270,000	-25.0%	\$270,000	-20.6%	\$155	-5.4%	4	19	5	4		96.4%
Townhouse	-	0.0%	-	0.0%	-	0.0%	-	0.0%	-	0.0%	-	-	-	-	-	0.0%
YTD:	-	0.0%	-	0.0%	-	0.0%	-	0.0%	-	0.0%	-	-	-	-	-	0.0%
Condominium	-	0.0%	-	0.0%	-	0.0%	-	0.0%	-	0.0%	-	-	-	-	-	0.0%
YTD:	-	0.0%	-	0.0%	-	0.0%	-	0.0%	-	0.0%	-	-	-	-	-	0.0%

\* Local Market Area Code: 925; Type: Census Place Group  
 \*\* Closed Sale counts for most recent 3 months are Preliminary.

Market Analysis By Local Market Area\*: Slaton

Property Type	Closed Sales**	YoY%	Dollar Volume	YoY%	Average Price	YoY%	Median Price	YoY%	Price/Sqft	YoY%	DOM	New Listings	Active Listings	Pending Sales	Months Inventory	Close To OLP
<b>All(New and Existing)</b>																
Residential (SF/COND/TH)	2	-77.8%	\$154,500	-83.2%	\$77,250	-24.5%	\$77,250	-44.8%	\$65	6.3%	76	6	19	2	4.6	91.7%
<b>YTD:</b>	30	-3.2%	\$4,938,400	17.0%	\$164,613	20.9%	\$146,750	4.8%	\$91	9.2%	81	54	19	26		91.4%
Single Family	2	-77.8%	\$154,500	-83.2%	\$77,250	-24.5%	\$77,250	-44.8%	\$65	6.3%	76	6	18	2	4.3	91.7%
<b>YTD:</b>	30	-3.2%	\$4,938,400	17.0%	\$164,613	20.9%	\$146,750	4.8%	\$91	9.2%	81	52	18	26		91.4%
Townhouse	-	0.0%	-	0.0%	-	0.0%	-	0.0%	-	0.0%	-	-	-	-	-	0.0%
<b>YTD:</b>	-	0.0%	-	0.0%	-	0.0%	-	0.0%	-	0.0%	-	1	1	-	-	0.0%
Condominium	-	0.0%	-	0.0%	-	0.0%	-	0.0%	-	0.0%	-	-	1	-	-	0.0%
<b>YTD:</b>	-	0.0%	-	0.0%	-	0.0%	-	0.0%	-	0.0%	-	1	1	-	-	0.0%
<b>Existing Home</b>																
Residential (SF/COND/TH)	2	-77.8%	\$154,500	-83.2%	\$77,250	-24.5%	\$77,250	-44.8%	\$65	6.3%	76	6	19	2	4.6	91.7%
<b>YTD:</b>	30	-3.2%	\$4,938,400	17.0%	\$164,613	20.9%	\$146,750	4.8%	\$91	9.2%	81	54	19	26		91.4%
Single Family	2	-77.8%	\$154,500	-83.2%	\$77,250	-24.5%	\$77,250	-44.8%	\$65	6.3%	76	6	18	2	4.3	91.7%
<b>YTD:</b>	30	-3.2%	\$4,938,400	17.0%	\$164,613	20.9%	\$146,750	4.8%	\$91	9.2%	81	52	18	26		91.4%
Townhouse	-	0.0%	-	0.0%	-	0.0%	-	0.0%	-	0.0%	-	-	-	-	-	0.0%
<b>YTD:</b>	-	0.0%	-	0.0%	-	0.0%	-	0.0%	-	0.0%	-	1	1	-	-	0.0%
Condominium	-	0.0%	-	0.0%	-	0.0%	-	0.0%	-	0.0%	-	-	1	-	-	0.0%
<b>YTD:</b>	-	0.0%	-	0.0%	-	0.0%	-	0.0%	-	0.0%	-	1	1	-	-	0.0%
<b>New Construction</b>																
Residential (SF/COND/TH)	-	0.0%	-	0.0%	-	0.0%	-	0.0%	-	0.0%	-	-	-	-	-	0.0%
<b>YTD:</b>	-	0.0%	-	0.0%	-	0.0%	-	0.0%	-	0.0%	-	-	-	-	-	0.0%
Single Family	-	0.0%	-	0.0%	-	0.0%	-	0.0%	-	0.0%	-	-	-	-	-	0.0%
<b>YTD:</b>	-	0.0%	-	0.0%	-	0.0%	-	0.0%	-	0.0%	-	-	-	-	-	0.0%
Townhouse	-	0.0%	-	0.0%	-	0.0%	-	0.0%	-	0.0%	-	-	-	-	-	0.0%
<b>YTD:</b>	-	0.0%	-	0.0%	-	0.0%	-	0.0%	-	0.0%	-	-	-	-	-	0.0%
Condominium	-	0.0%	-	0.0%	-	0.0%	-	0.0%	-	0.0%	-	-	-	-	-	0.0%
<b>YTD:</b>	-	0.0%	-	0.0%	-	0.0%	-	0.0%	-	0.0%	-	-	-	-	-	0.0%

\* Local Market Area Code: 935; Type: Census Place Group  
 \*\* Closed Sale counts for most recent 3 months are Preliminary.

Market Analysis By Local Market Area\*: Smyer

Property Type	Closed Sales**	YoY%	Dollar Volume	YoY%	Average Price	YoY%	Median Price	YoY%	Price/Sqft	YoY%	DOM	New Listings	Active Listings	Pending Sales	Months Inventory	Close To OLP
<b>All(New and Existing)</b>																
Residential (SF/COND/TH)	-	0.0%	-	0.0%	-	0.0%	-	0.0%	-	0.0%	-	1	1	-	6.0	0.0%
YTD:	2	100.0%	\$338,000	100.0%	\$169,000	100.0%	\$169,000	100.0%	\$104	100.0%	28	3	1	2		104.3%
Single Family	-	0.0%	-	0.0%	-	0.0%	-	0.0%	-	0.0%	-	1	1	-	6.0	0.0%
YTD:	2	100.0%	\$338,000	100.0%	\$169,000	100.0%	\$169,000	100.0%	\$104	100.0%	28	3	1	2		104.3%
Townhouse	-	0.0%	-	0.0%	-	0.0%	-	0.0%	-	0.0%	-	-	-	-	-	0.0%
YTD:	-	0.0%	-	0.0%	-	0.0%	-	0.0%	-	0.0%	-	-	-	-	-	0.0%
Condominium	-	0.0%	-	0.0%	-	0.0%	-	0.0%	-	0.0%	-	-	-	-	-	0.0%
YTD:	-	0.0%	-	0.0%	-	0.0%	-	0.0%	-	0.0%	-	-	-	-	-	0.0%
<b>Existing Home</b>																
Residential (SF/COND/TH)	-	0.0%	-	0.0%	-	0.0%	-	0.0%	-	0.0%	-	1	1	-	6.0	0.0%
YTD:	2	100.0%	\$338,000	100.0%	\$169,000	100.0%	\$169,000	100.0%	\$104	100.0%	28	3	1	2		104.3%
Single Family	-	0.0%	-	0.0%	-	0.0%	-	0.0%	-	0.0%	-	1	1	-	6.0	0.0%
YTD:	2	100.0%	\$338,000	100.0%	\$169,000	100.0%	\$169,000	100.0%	\$104	100.0%	28	3	1	2		104.3%
Townhouse	-	0.0%	-	0.0%	-	0.0%	-	0.0%	-	0.0%	-	-	-	-	-	0.0%
YTD:	-	0.0%	-	0.0%	-	0.0%	-	0.0%	-	0.0%	-	-	-	-	-	0.0%
Condominium	-	0.0%	-	0.0%	-	0.0%	-	0.0%	-	0.0%	-	-	-	-	-	0.0%
YTD:	-	0.0%	-	0.0%	-	0.0%	-	0.0%	-	0.0%	-	-	-	-	-	0.0%
<b>New Construction</b>																
Residential (SF/COND/TH)	-	0.0%	-	0.0%	-	0.0%	-	0.0%	-	0.0%	-	-	-	-	-	0.0%
YTD:	-	0.0%	-	0.0%	-	0.0%	-	0.0%	-	0.0%	-	-	-	-	-	0.0%
Single Family	-	0.0%	-	0.0%	-	0.0%	-	0.0%	-	0.0%	-	-	-	-	-	0.0%
YTD:	-	0.0%	-	0.0%	-	0.0%	-	0.0%	-	0.0%	-	-	-	-	-	0.0%
Townhouse	-	0.0%	-	0.0%	-	0.0%	-	0.0%	-	0.0%	-	-	-	-	-	0.0%
YTD:	-	0.0%	-	0.0%	-	0.0%	-	0.0%	-	0.0%	-	-	-	-	-	0.0%
Condominium	-	0.0%	-	0.0%	-	0.0%	-	0.0%	-	0.0%	-	-	-	-	-	0.0%
YTD:	-	0.0%	-	0.0%	-	0.0%	-	0.0%	-	0.0%	-	-	-	-	-	0.0%

\* Local Market Area Code: 491; Type: Census Place Group  
 \*\* Closed Sale counts for most recent 3 months are Preliminary.

Market Analysis By Local Market Area\*: Sundown

Property Type	Closed Sales**	YoY%	Dollar Volume	YoY%	Average Price	YoY%	Median Price	YoY%	Price/Sqft	YoY%	DOM	New Listings	Active Listings	Pending Sales	Months Inventory	Close To OLP
<b>All(New and Existing)</b>																
Residential (SF/COND/TH)	-	-100.0%	-	-100.0%	-	-100.0%	-	-100.0%	-	-100.0%	-	1	3	1	6.0	0.0%
YTD:	4	100.0%	\$418,500	55.1%	\$104,625	-22.5%	\$89,500	-33.7%	\$62	-32.6%	61	4	2	5		82.1%
Single Family	-	-100.0%	-	-100.0%	-	-100.0%	-	-100.0%	-	-100.0%	-	1	3	1	6.0	0.0%
YTD:	4	100.0%	\$418,500	55.1%	\$104,625	-22.5%	\$89,500	-33.7%	\$62	-32.6%	61	4	2	5		82.1%
Townhouse	-	0.0%	-	0.0%	-	0.0%	-	0.0%	-	0.0%	-	-	-	-	-	0.0%
YTD:	-	0.0%	-	0.0%	-	0.0%	-	0.0%	-	0.0%	-	-	-	-	-	0.0%
Condominium	-	0.0%	-	0.0%	-	0.0%	-	0.0%	-	0.0%	-	-	-	-	-	0.0%
YTD:	-	0.0%	-	0.0%	-	0.0%	-	0.0%	-	0.0%	-	-	-	-	-	0.0%
<b>Existing Home</b>																
Residential (SF/COND/TH)	-	-100.0%	-	-100.0%	-	-100.0%	-	-100.0%	-	-100.0%	-	1	3	1	6.0	0.0%
YTD:	4	100.0%	\$418,500	55.1%	\$104,625	-22.5%	\$89,500	-33.7%	\$62	-32.6%	61	4	2	5		82.1%
Single Family	-	-100.0%	-	-100.0%	-	-100.0%	-	-100.0%	-	-100.0%	-	1	3	1	6.0	0.0%
YTD:	4	100.0%	\$418,500	55.1%	\$104,625	-22.5%	\$89,500	-33.7%	\$62	-32.6%	61	4	2	5		82.1%
Townhouse	-	0.0%	-	0.0%	-	0.0%	-	0.0%	-	0.0%	-	-	-	-	-	0.0%
YTD:	-	0.0%	-	0.0%	-	0.0%	-	0.0%	-	0.0%	-	-	-	-	-	0.0%
Condominium	-	0.0%	-	0.0%	-	0.0%	-	0.0%	-	0.0%	-	-	-	-	-	0.0%
YTD:	-	0.0%	-	0.0%	-	0.0%	-	0.0%	-	0.0%	-	-	-	-	-	0.0%
<b>New Construction</b>																
Residential (SF/COND/TH)	-	0.0%	-	0.0%	-	0.0%	-	0.0%	-	0.0%	-	-	-	-	-	0.0%
YTD:	-	0.0%	-	0.0%	-	0.0%	-	0.0%	-	0.0%	-	-	-	-	-	0.0%
Single Family	-	0.0%	-	0.0%	-	0.0%	-	0.0%	-	0.0%	-	-	-	-	-	0.0%
YTD:	-	0.0%	-	0.0%	-	0.0%	-	0.0%	-	0.0%	-	-	-	-	-	0.0%
Townhouse	-	0.0%	-	0.0%	-	0.0%	-	0.0%	-	0.0%	-	-	-	-	-	0.0%
YTD:	-	0.0%	-	0.0%	-	0.0%	-	0.0%	-	0.0%	-	-	-	-	-	0.0%
Condominium	-	0.0%	-	0.0%	-	0.0%	-	0.0%	-	0.0%	-	-	-	-	-	0.0%
YTD:	-	0.0%	-	0.0%	-	0.0%	-	0.0%	-	0.0%	-	-	-	-	-	0.0%

\* Local Market Area Code: 223; Type: Census Place Group  
 \*\* Closed Sale counts for most recent 3 months are Preliminary.

Market Analysis By Local Market Area\*: Wolfforth

Property Type	Closed Sales**	YoY%	Dollar Volume	YoY%	Average Price	YoY%	Median Price	YoY%	Price/Sqft	YoY%	DOM	New Listings	Active Listings	Pending Sales	Months Inventory	Close To OLP
<b>All(New and Existing)</b>																
Residential (SF/COND/TH)	19	-5.0%	\$6,658,930	-0.4%	\$350,470	4.9%	\$342,500	8.2%	\$156	1.1%	55	32	44	21	2.9	97.4%
<b>YTD:</b>	104	-26.8%	\$32,734,319	-28.5%	\$314,753	-2.4%	\$310,000	3.4%	\$152	0.2%	56	180	42	111		96.9%
Single Family	18	-10.0%	\$6,499,546	-2.7%	\$361,086	8.1%	\$360,000	13.7%	\$157	1.6%	54	32	43	21	2.9	97.4%
<b>YTD:</b>	103	-27.5%	\$32,565,738	-28.9%	\$316,172	-1.9%	\$312,500	4.2%	\$152	0.2%	55	178	41	110		96.9%
Townhouse	1	100.0%	\$170,000	100.0%	\$170,000	100.0%	\$170,000	100.0%	\$141	100.0%	67	-	1	-	6.0	0.0%
<b>YTD:</b>	1	100.0%	\$170,000	100.0%	\$170,000	100.0%	\$170,000	100.0%	\$141	100.0%	67	2	1	1		0.0%
Condominium	-	0.0%	-	0.0%	-	0.0%	-	0.0%	-	0.0%	-	-	-	-	-	0.0%
<b>YTD:</b>	-	0.0%	-	0.0%	-	0.0%	-	0.0%	-	0.0%	-	-	-	-	-	0.0%
<b>Existing Home</b>																
Residential (SF/COND/TH)	17	13.3%	\$5,928,219	13.6%	\$348,719	0.3%	\$342,500	-9.9%	\$155	1.0%	44	20	31	17	3.2	96.8%
<b>YTD:</b>	76	1.3%	\$23,887,965	3.3%	\$314,315	1.9%	\$317,500	11.4%	\$150	4.9%	53	139	29	83		96.3%
Single Family	16	6.7%	\$5,770,133	10.6%	\$360,633	3.7%	\$360,000	-5.3%	\$156	1.6%	43	20	30	17	3.1	96.8%
<b>YTD:</b>	75	0.0%	\$23,719,916	2.6%	\$316,266	2.6%	\$318,750	11.8%	\$150	5.0%	52	137	29	82		96.3%
Townhouse	1	100.0%	\$170,000	100.0%	\$170,000	100.0%	\$170,000	100.0%	\$141	100.0%	67	-	1	-	6.0	0.0%
<b>YTD:</b>	1	100.0%	\$170,000	100.0%	\$170,000	100.0%	\$170,000	100.0%	\$141	100.0%	67	2	1	1		0.0%
Condominium	-	0.0%	-	0.0%	-	0.0%	-	0.0%	-	0.0%	-	-	-	-	-	0.0%
<b>YTD:</b>	-	0.0%	-	0.0%	-	0.0%	-	0.0%	-	0.0%	-	-	-	-	-	0.0%
<b>New Construction</b>																
Residential (SF/COND/TH)	2	-60.0%	\$728,960	-50.3%	\$364,480	24.4%	\$364,480	21.9%	\$162	3.6%	139	12	13	4	2.4	98.7%
<b>YTD:</b>	28	-58.2%	\$8,845,916	-60.9%	\$315,926	-6.5%	\$296,625	-7.0%	\$158	-2.4%	64	41	12	28		98.2%
Single Family	2	-60.0%	\$728,960	-50.3%	\$364,480	24.4%	\$364,480	21.9%	\$162	3.6%	139	12	13	4	2.4	98.7%
<b>YTD:</b>	28	-58.2%	\$8,845,916	-60.9%	\$315,926	-6.5%	\$296,625	-7.0%	\$158	-2.4%	64	41	12	28		98.2%
Townhouse	-	0.0%	-	0.0%	-	0.0%	-	0.0%	-	0.0%	-	-	-	-	-	0.0%
<b>YTD:</b>	-	0.0%	-	0.0%	-	0.0%	-	0.0%	-	0.0%	-	-	-	-	-	0.0%
Condominium	-	0.0%	-	0.0%	-	0.0%	-	0.0%	-	0.0%	-	-	-	-	-	0.0%
<b>YTD:</b>	-	0.0%	-	0.0%	-	0.0%	-	0.0%	-	0.0%	-	-	-	-	-	0.0%

\* Local Market Area Code: 1096; Type: Census Place Group  
 \*\* Closed Sale counts for most recent 3 months are Preliminary.

