

Market Analysis By State: Texas

Property Type	Closed Sales*	YoY%	Dollar Volume	YoY%	Average Price	YoY%	Median Price	YoY%	Price/ Sqft	YoY%	DOM	New Listings	Active Listings	Pending Sales	Months Inventory	Close To OLP
<u>All(New and Existing)</u>																
Residential (SF/COND/TH)	30,164	-12.1%	\$12,946,526,933	-12.5%	\$429,205	-0.4%	\$345,000	-0.8%	\$193	-0.7%	52	51,502	125,398	29,729	4.6	95.6%
YTD:	166,243	-2.1%	\$70,027,223,512	0.3%	\$421,234	2.4%	\$339,381	1.3%	\$192	1.7%	59	291,573	107,867	178,258		95.2%
Single Family	28,506	-11.6%	\$12,371,496,538	-12.0%	\$433,996	-0.5%	\$349,000	-0.3%	\$190	-0.4%	52	48,122	115,525	28,114	4.5	95.6%
YTD:	156,716	-1.6%	\$66,628,227,195	0.6%	\$425,153	2.3%	\$340,000	0.3%	\$189	1.9%	59	270,760	99,355	168,168		95.2%
Townhouse	771	-9.0%	\$272,748,085	-10.2%	\$353,759	-1.4%	\$322,000	-4.2%	\$195	0.1%	55	1,377	3,330	723	4.7	95.8%
YTD:	4,374	-2.1%	\$1,576,015,222	0.3%	\$360,314	2.5%	\$329,000	-0.3%	\$196	2.1%	55	8,421	2,954	4,652		95.7%
Condominium	863	-30.1%	\$295,021,268	-30.0%	\$341,855	0.1%	\$250,000	-3.9%	\$264	-2.1%	58	2,003	6,543	892	7.5	93.9%
YTD:	5,116	-14.0%	\$1,810,702,687	-10.5%	\$353,929	4.2%	\$260,000	2.0%	\$268	2.2%	61	12,392	5,557	5,438		93.9%
<u>Existing Home</u>																
Residential (SF/COND/TH)	22,618	-14.4%	\$9,825,300,059	-12.7%	\$434,402	1.9%	\$340,000	1.5%	\$194	0.3%	45	40,424	93,827	21,883	4.7	95.4%
YTD:	122,833	-3.7%	\$51,859,816,668	0.8%	\$422,198	4.7%	\$330,000	2.7%	\$193	3.0%	52	224,212	78,443	130,507		95.1%
Single Family	21,173	-14.0%	\$9,340,399,865	-12.4%	\$441,147	1.8%	\$346,000	1.8%	\$191	0.5%	45	37,433	85,537	20,463	4.6	95.5%
YTD:	114,635	-3.4%	\$49,030,135,120	1.1%	\$427,707	4.6%	\$335,000	3.1%	\$189	3.1%	52	206,396	71,443	121,877		95.2%
Townhouse	594	-5.3%	\$204,230,723	-6.1%	\$343,823	-0.9%	\$299,500	-4.9%	\$191	2.2%	45	1,114	2,387	572	4.5	95.9%
YTD:	3,303	-1.3%	\$1,154,401,340	2.0%	\$349,501	3.3%	\$305,000	0.0%	\$191	3.6%	46	6,355	2,036	3,483		95.8%
Condominium	826	-29.5%	\$272,697,682	-27.4%	\$330,142	2.9%	\$245,000	-2.0%	\$261	0.3%	58	1,877	5,903	848	7.2	93.8%
YTD:	4,856	-13.3%	\$1,662,187,571	-8.8%	\$342,296	5.2%	\$252,000	3.3%	\$264	3.2%	59	11,461	4,963	5,147		93.9%
<u>New Construction</u>																
Residential (SF/COND/TH)	7,540	-4.7%	\$3,117,748,881	-11.8%	\$413,495	-7.5%	\$351,682	-5.9%	\$190	-3.6%	74	11,078	31,571	7,846	4.5	96.0%
YTD:	43,385	2.9%	\$18,156,800,031	-1.3%	\$418,504	-4.0%	\$351,522	-4.7%	\$190	-1.9%	78	67,361	29,424	47,751		95.4%
Single Family	7,327	-4.0%	\$3,027,228,350	-11.1%	\$413,161	-7.4%	\$350,590	-5.8%	\$189	-3.0%	73	10,689	29,988	7,651	4.4	96.0%
YTD:	42,059	3.3%	\$17,588,495,989	-0.9%	\$418,186	-4.1%	\$350,000	-4.7%	\$189	-1.6%	78	64,364	27,912	46,291		95.4%
Townhouse	175	-20.5%	\$67,830,008	-21.4%	\$387,600	-1.2%	\$366,899	-4.1%	\$209	-3.8%	91	263	943	151	5.3	95.6%
YTD:	1,063	-5.1%	\$418,650,276	-4.7%	\$393,838	0.5%	\$369,207	-2.6%	\$214	-1.6%	84	2,066	917	1,169		95.4%
Condominium	38	-39.7%	\$22,602,128	-50.7%	\$594,793	-18.3%	\$473,110	-19.8%	\$328	-25.7%	61	126	640	44	11.9	95.9%
YTD:	261	-26.1%	\$148,665,902	-25.7%	\$569,601	0.4%	\$476,920	-4.1%	\$336	-6.4%	84	931	594	291		94.4%

* Closed Sale counts for most recent 3 months are Preliminary.

Trend Analysis By State: Texas

Residential, All (New and Existing)



Single Family, New vs. Existing



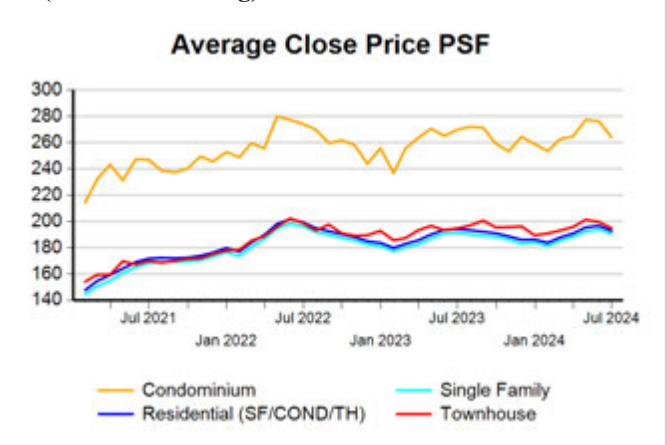
COND/TH, All (New and Existing)



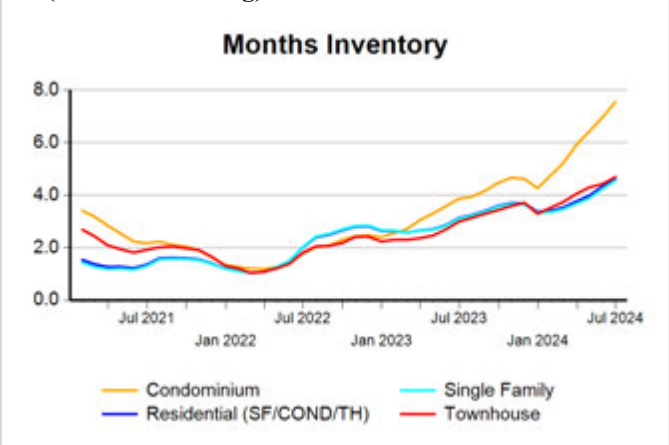
All (New and Existing) Construction



All (New and Existing) Construction

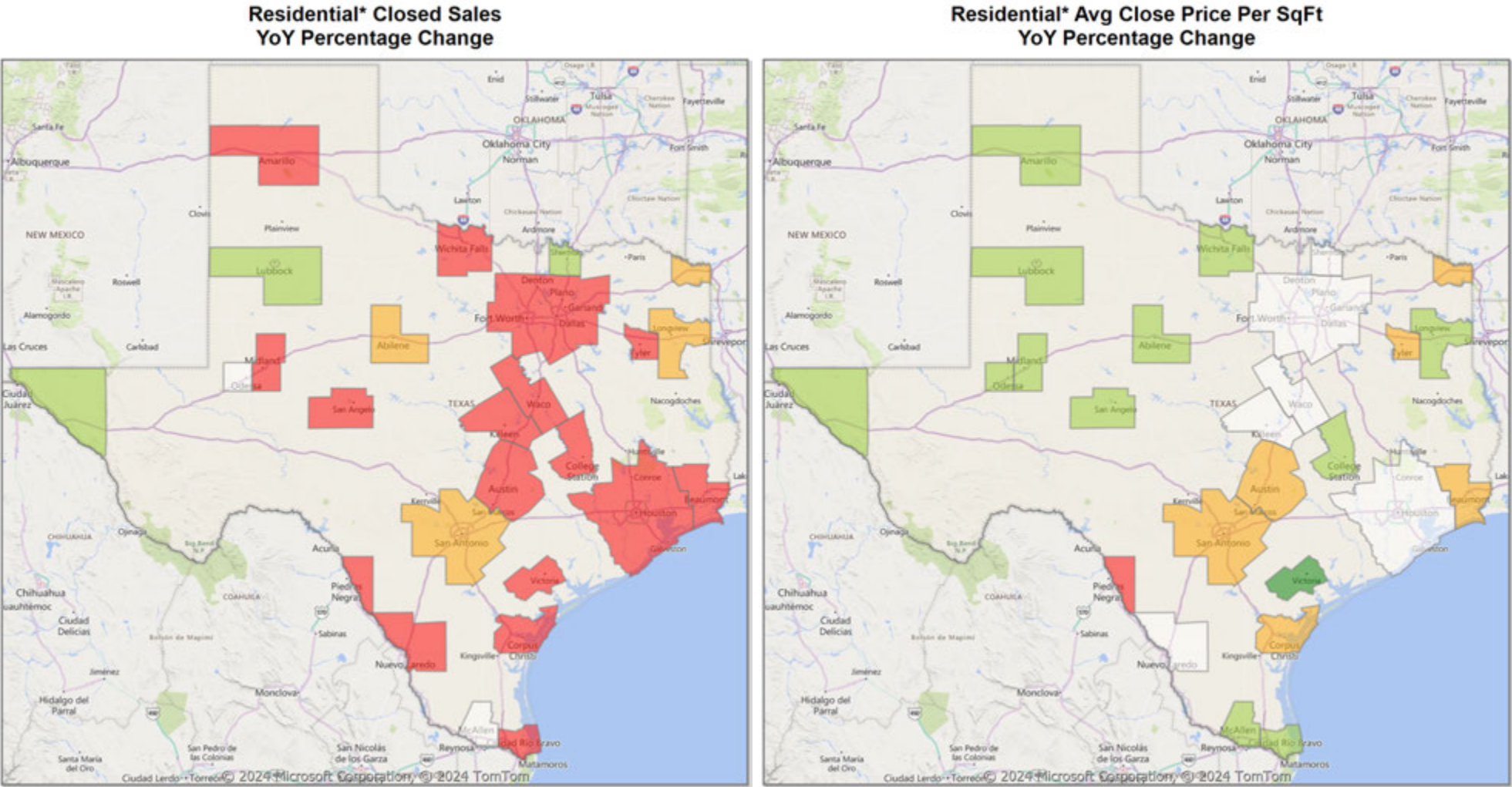


All (New and Existing) Construction



* Closed Sale counts for most recent 3 months are Preliminary.

Comparison By Metropolitan Statistical Area in Texas

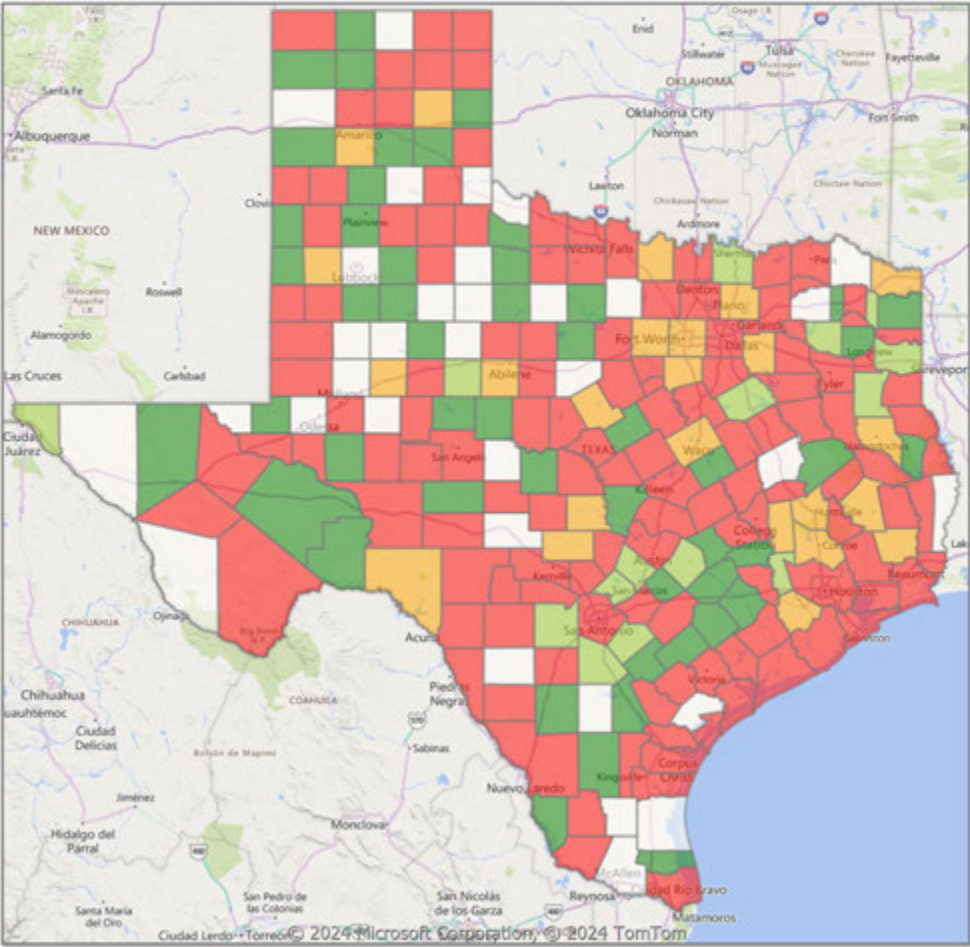


* Residential includes Single Family, Condominium and Townhouse.

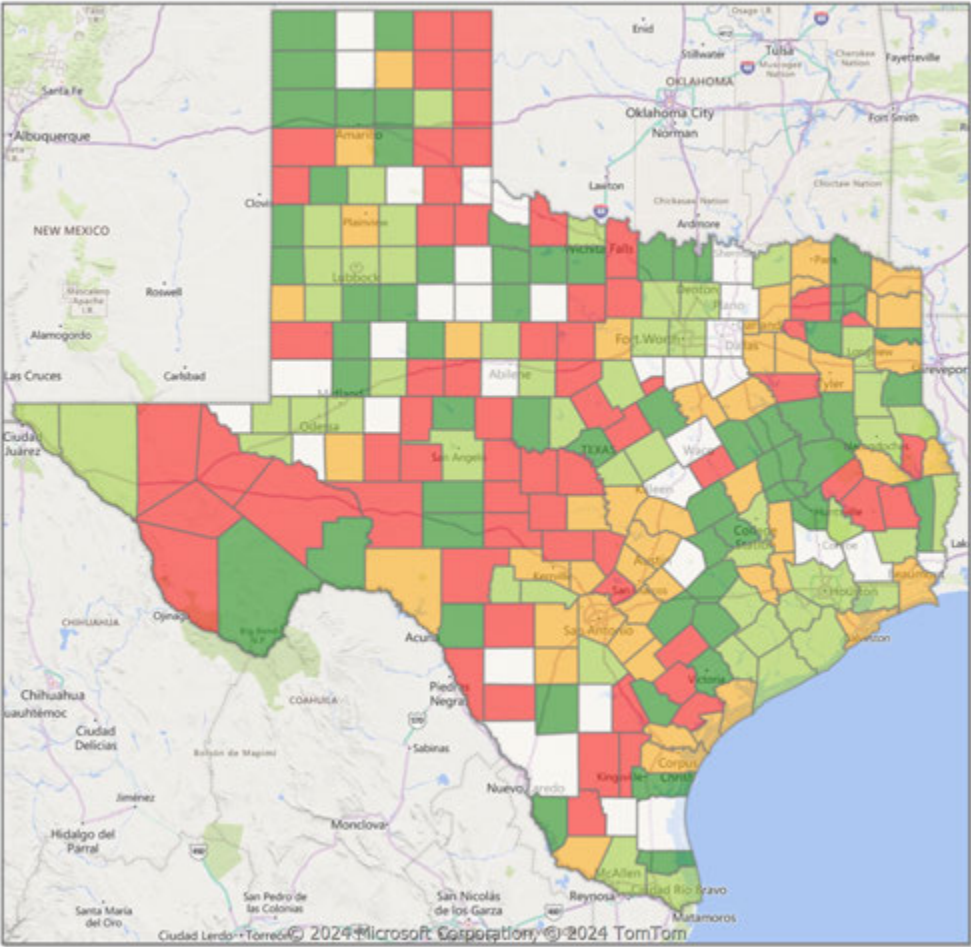


Comparison By County in Texas

Residential* Closed Sales
YoY Percentage Change



Residential* Avg Close Price Per SqFt
YoY Percentage Change



* Residential includes Single Family, Condominium and Townhouse.



Market Analysis By Metropolitan Statistical Area: Lubbock

Property Type	Closed Sales*	YoY%	Dollar Volume	YoY%	Average Price	YoY%	Median Price	YoY%	Price/ Sqft	YoY%	DOM	New Listings	Active Listings	Pending Sales	Months Inventory	Close To OLP
All(New and Existing)																
Residential (SF/COND/TH)	545	2.1%	\$156,800,496	6.8%	\$287,707	4.7%	\$233,250	-4.2%	\$138	1.6%	37	908	1,694	520	4.1	93.5%
YTD:	2,622	4.6%	\$734,353,745	5.4%	\$280,074	0.8%	\$234,230	-2.4%	\$136	0.5%	46	5,298	1,553	2,873		95.6%
Single Family	530	2.7%	\$153,090,336	6.9%	\$288,850	4.1%	\$234,970	-4.1%	\$139	1.8%	35	873	1,610	507	4.0	93.7%
YTD:	2,540	3.8%	\$713,420,707	4.6%	\$280,874	0.7%	\$235,095	-2.9%	\$136	0.5%	45	5,098	1,474	2,780		95.7%
Townhouse	13	-23.5%	\$2,445,300	-26.5%	\$188,100	-3.9%	\$195,000	-2.5%	\$124	-4.7%	96	25	71	10	7.7	89.9%
YTD:	65	25.0%	\$12,826,900	20.8%	\$197,337	-3.4%	\$190,000	-7.3%	\$133	0.6%	105	164	68	74		92.9%
Condominium	1	0.0%	\$1,000,000	263.6%	\$1,000,000	263.6%	\$1,000,000	263.6%	\$128	-14.5%	9	10	13	3	6.0	0.0%
YTD:	15	50.0%	\$7,566,000	76.5%	\$504,400	17.7%	\$214,000	-13.5%	\$134	-2.7%	41	36	10	19		91.8%

* Closed Sale counts for most recent 3 months are Preliminary.

Existing Home																
Residential (SF/COND/TH)	435	1.9%	\$125,996,062	14.9%	\$289,646	12.8%	\$226,000	-1.7%	\$134	3.9%	34	745	1,359	418	4.3	92.4%
YTD:	1,980	0.1%	\$542,198,108	5.4%	\$273,837	5.3%	\$225,000	2.3%	\$128	1.0%	43	4,171	1,188	2,192		94.8%
Single Family	424	1.4%	\$123,070,965	14.1%	\$290,262	12.5%	\$227,000	-1.3%	\$134	4.2%	34	718	1,294	407	4.2	92.7%
YTD:	1,939	0.1%	\$529,453,874	5.1%	\$273,055	5.0%	\$225,000	1.4%	\$128	1.1%	43	4,024	1,136	2,139		94.8%
Townhouse	9	12.5%	\$1,645,300	7.2%	\$182,811	-4.7%	\$160,000	-18.5%	\$115	-9.4%	69	17	53	8	15.1	85.3%
YTD:	25	-19.4%	\$4,888,750	-22.5%	\$195,550	-3.9%	\$165,000	-21.4%	\$119	-6.7%	57	112	42	34		90.2%
Condominium	1	0.0%	\$1,000,000	263.6%	\$1,000,000	263.6%	\$1,000,000	263.6%	\$128	-14.5%	9	10	12	3	5.5	0.0%
YTD:	15	50.0%	\$7,566,000	76.5%	\$504,400	17.7%	\$214,000	-13.5%	\$134	-2.7%	41	35	9	19		91.8%

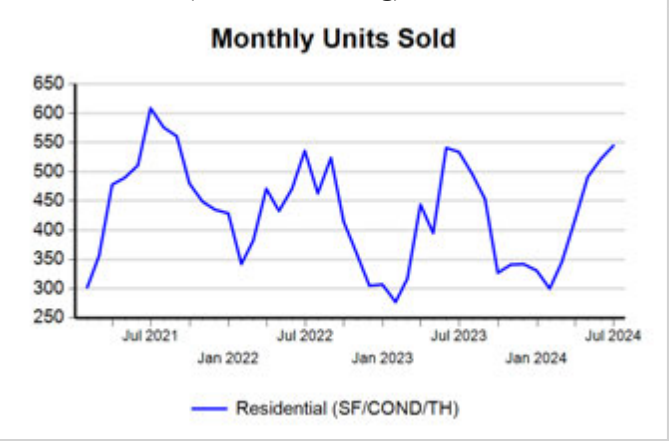
* Closed Sale counts for most recent 3 months are Preliminary.

New Construction																
Residential (SF/COND/TH)	110	2.8%	\$30,806,812	-17.0%	\$280,062	-19.2%	\$245,078	-23.4%	\$157	-5.5%	45	163	335	102	3.6	97.0%
YTD:	641	20.9%	\$191,840,645	5.2%	\$299,283	-13.1%	\$253,608	-16.7%	\$158	-4.0%	57	1,127	364	681		97.9%
Single Family	106	8.2%	\$30,019,370	-15.0%	\$283,202	-21.4%	\$246,500	-25.9%	\$157	-6.9%	41	155	316	100	3.6	96.9%
YTD:	601	18.1%	\$183,936,330	3.3%	\$306,050	-12.5%	\$261,220	-16.3%	\$159	-3.9%	51	1,074	338	641		98.2%
Townhouse	4	-55.6%	\$800,000	-55.4%	\$200,000	0.4%	\$200,000	0.1%	\$143	8.0%	158	8	18	2	3.1	99.0%
YTD:	40	90.5%	\$7,938,150	84.0%	\$198,454	-3.4%	\$195,000	-4.7%	\$142	1.6%	135	52	25	40		94.0%
Condominium	-	0.0%	-	0.0%	-	0.0%	-	0.0%	-	0.0%	-	-	1	0	-	0.0%
YTD:	-	0.0%	-	0.0%	-	0.0%	-	0.0%	-	0.0%	-	1	1	0		0.0%

* Closed Sale counts for most recent 3 months are Preliminary.

Trend Analysis By Metropolitan Statistical Area: Lubbock

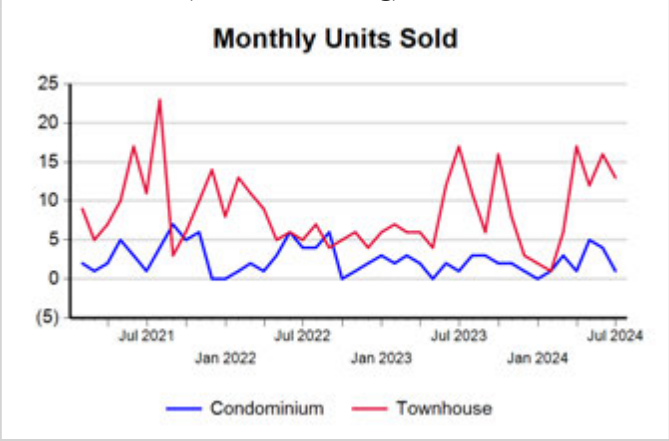
Residential, All (New and Existing)



Single Family, New vs. Existing



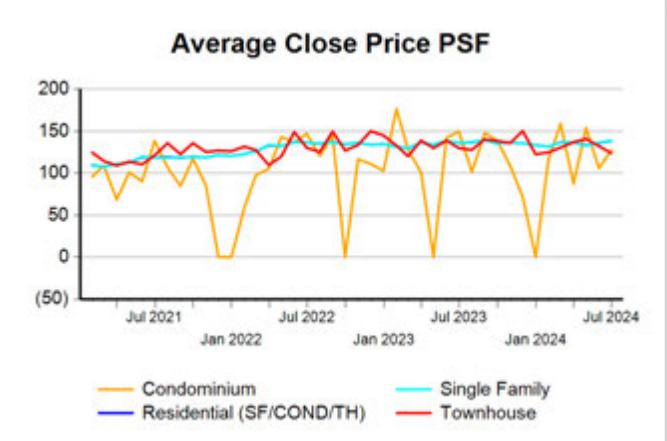
COND/TH, All (New and Existing)



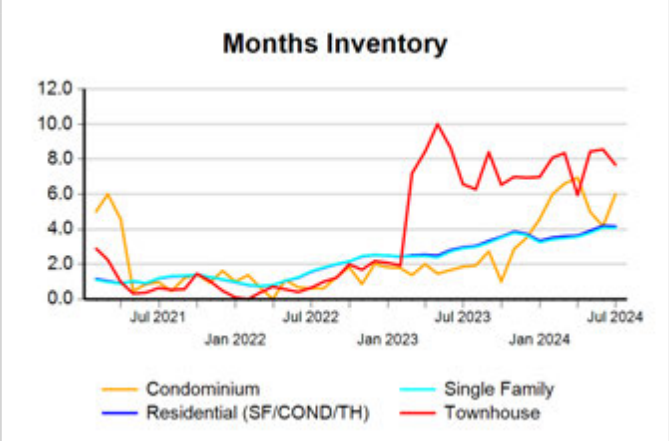
All (New and Existing) Construction



All (New and Existing) Construction

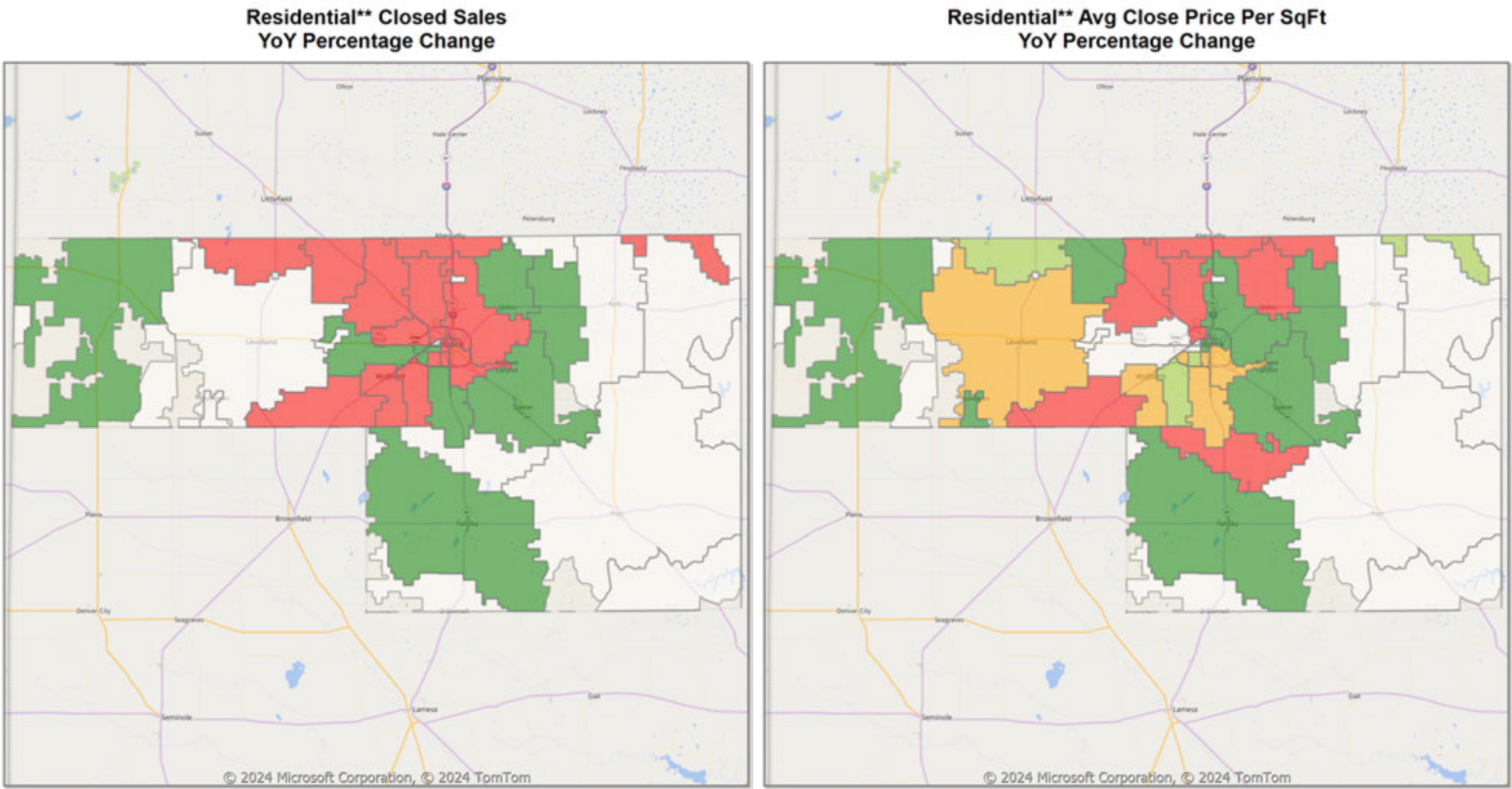


All (New and Existing) Construction

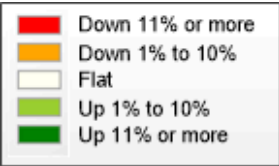


* Closed Sale counts for most recent 3 months are Preliminary.

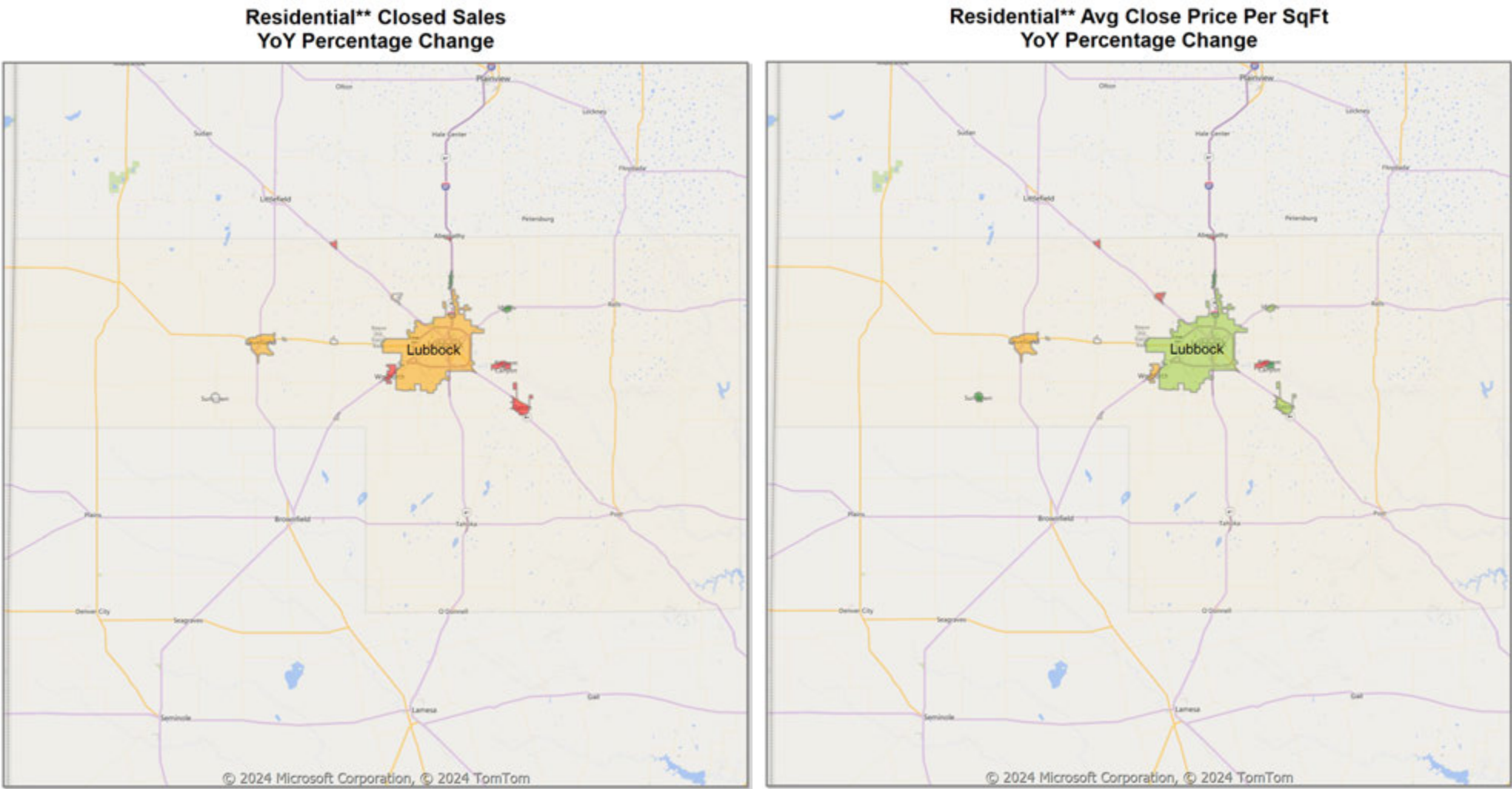
Comparison By Zip Code* in Lubbock MSA



* US Census Zip Code Tabulation Area
** Residential includes Single Family, Condominium and Townhouse.



Comparison By Local Market Area* in Lubbock MSA



* Census Place Group
** Residential includes Single Family, Condominium and Townhouse.



Market Analysis By County: Hockley County

Property Type	Closed Sales*	YoY%	Dollar Volume	YoY%	Average Price	YoY%	Median Price	YoY%	Price/ Sqft	YoY%	DOM	New Listings	Active Listings	Pending Sales	Months Inventory	Close To OLP
<u>All(New and Existing)</u>																
Residential (SF/COND/TH)	19	-5.0%	\$4,393,900	-9.9%	\$231,258	-5.1%	\$216,500	6.9%	\$120	3.6%	58	25	73	16	4.3	91.3%
YTD:	117	23.2%	\$24,389,355	13.3%	\$208,456	-8.0%	\$189,500	-7.6%	\$106	-0.4%	70	173	73	123		92.7%
Single Family	19	-5.0%	\$4,393,900	-9.9%	\$231,258	-5.1%	\$216,500	6.9%	\$120	3.6%	58	25	73	16	4.3	91.3%
YTD:	116	22.1%	\$24,249,355	12.6%	\$209,046	-7.8%	\$189,750	-7.4%	\$107	0.5%	69	173	72	122		93.0%
Townhouse	-	0.0%	-	0.0%	-	0.0%	-	0.0%	-	0.0%	-	-	-	-	-	0.0%
YTD:	-	0.0%	-	0.0%	-	0.0%	-	0.0%	-	0.0%	-	-	-	-	-	0.0%
Condominium	-	0.0%	-	0.0%	-	0.0%	-	0.0%	-	0.0%	-	-	-	-	-	0.0%
YTD:	1	100.0%	\$140,000	100.0%	\$140,000	100.0%	\$140,000	100.0%	\$7	100.0%	255	-	1	1		58.6%
<u>Existing Home</u>																
Residential (SF/COND/TH)	14	-30.0%	\$2,992,400	-38.6%	\$213,743	-12.3%	\$205,450	1.5%	\$102	-11.6%	56	22	62	14	4.0	89.1%
YTD:	103	12.0%	\$21,015,235	1.7%	\$204,031	-9.2%	\$185,900	-7.1%	\$99	-5.8%	72	150	64	109		92.1%
Single Family	14	-30.0%	\$2,992,400	-38.6%	\$213,743	-12.3%	\$205,450	1.5%	\$102	-11.6%	56	22	62	14	4.0	89.1%
YTD:	102	10.9%	\$20,875,235	1.0%	\$204,659	-8.9%	\$187,450	-6.3%	\$100	-5.0%	70	150	63	108		92.5%
Townhouse	-	0.0%	-	0.0%	-	0.0%	-	0.0%	-	0.0%	-	-	-	-	-	0.0%
YTD:	-	0.0%	-	0.0%	-	0.0%	-	0.0%	-	0.0%	-	-	-	-	-	0.0%
Condominium	-	0.0%	-	0.0%	-	0.0%	-	0.0%	-	0.0%	-	-	-	-	-	0.0%
YTD:	1	100.0%	\$140,000	100.0%	\$140,000	100.0%	\$140,000	100.0%	\$7	100.0%	255	-	1	1		58.6%
<u>New Construction</u>																
Residential (SF/COND/TH)	5	100.0%	\$1,401,500	100.0%	\$280,300	100.0%	\$259,000	100.0%	\$169	100.0%	62	3	11	2	7.8	99.1%
YTD:	14	366.7%	\$3,374,120	290.5%	\$241,009	-16.3%	\$228,500	-8.6%	\$155	14.7%	61	23	8	14		98.0%
Single Family	5	100.0%	\$1,401,500	100.0%	\$280,300	100.0%	\$259,000	100.0%	\$169	100.0%	62	3	11	2	7.8	99.1%
YTD:	14	366.7%	\$3,374,120	290.5%	\$241,009	-16.3%	\$228,500	-8.6%	\$155	14.7%	61	23	8	14		98.0%
Townhouse	-	0.0%	-	0.0%	-	0.0%	-	0.0%	-	0.0%	-	-	-	-	-	0.0%
YTD:	-	0.0%	-	0.0%	-	0.0%	-	0.0%	-	0.0%	-	-	-	-	-	0.0%
Condominium	-	0.0%	-	0.0%	-	0.0%	-	0.0%	-	0.0%	-	-	-	-	-	0.0%
YTD:	-	0.0%	-	0.0%	-	0.0%	-	0.0%	-	0.0%	-	-	-	-	-	0.0%

* Closed Sale counts for most recent 3 months are Preliminary.

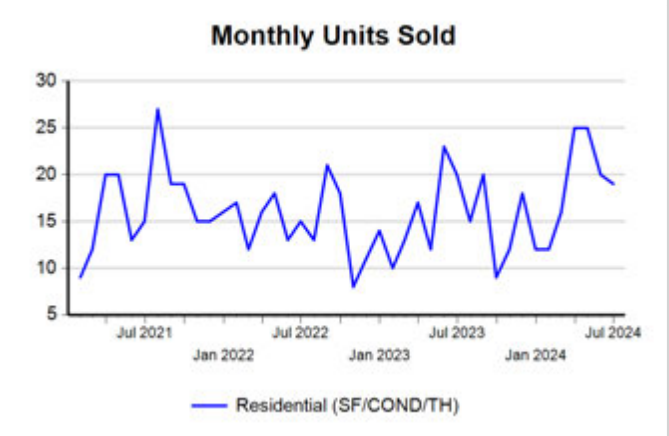
Market Analysis By County: Lubbock County

Property Type	Closed Sales*	YoY%	Dollar Volume	YoY%	Average Price	YoY%	Median Price	YoY%	Price/ Sqft	YoY%	DOM	New Listings	Active Listings	Pending Sales	Months Inventory	Close To OLP
<u>All(New and Existing)</u>																
Residential (SF/COND/TH)	504	0.8%	\$147,576,560	5.8%	\$292,811	5.0%	\$235,000	-4.1%	\$140	1.5%	35	860	1,555	488	4.1	94.0%
YTD:	2,419	3.1%	\$687,938,472	3.9%	\$284,390	0.7%	\$236,128	-3.6%	\$138	0.3%	45	4,966	1,414	2,661		95.9%
Single Family	489	1.5%	\$143,866,341	5.9%	\$294,205	4.4%	\$235,095	-6.0%	\$141	1.6%	34	825	1,472	475	4.0	94.2%
YTD:	2,338	2.3%	\$667,140,722	3.0%	\$285,347	0.7%	\$239,000	-2.5%	\$138	0.4%	43	4,767	1,336	2,569		96.0%
Townhouse	13	-23.5%	\$2,445,300	-26.5%	\$188,100	-3.9%	\$195,000	-2.5%	\$124	-4.7%	96	25	71	10	7.7	89.9%
YTD:	65	25.0%	\$12,826,900	20.8%	\$197,337	-3.4%	\$190,000	-7.3%	\$133	0.6%	105	164	68	74		92.9%
Condominium	1	0.0%	\$1,000,000	263.6%	\$1,000,000	263.6%	\$1,000,000	263.6%	\$128	-14.5%	9	10	12	3	5.8	0.0%
YTD:	14	55.6%	\$7,426,000	81.0%	\$530,429	16.4%	\$222,000	-19.3%	\$143	-3.0%	26	35	9	18		95.1%
<u>Existing Home</u>																
Residential (SF/COND/TH)	400	1.8%	\$118,702,322	16.0%	\$296,756	13.9%	\$230,000	-0.9%	\$136	4.3%	33	700	1,244	388	4.3	93.0%
YTD:	1,800	-1.3%	\$502,990,366	4.2%	\$279,439	5.6%	\$229,500	2.0%	\$131	1.1%	41	3,878	1,071	2,000		95.1%
Single Family	389	1.3%	\$115,774,089	15.1%	\$297,620	13.7%	\$232,000	-0.8%	\$137	4.6%	32	673	1,179	377	4.2	93.4%
YTD:	1,760	-1.3%	\$490,379,894	3.9%	\$278,625	5.2%	\$230,000	2.2%	\$131	1.2%	41	3,731	1,020	1,948		95.2%
Townhouse	9	12.5%	\$1,645,300	7.2%	\$182,811	-4.7%	\$160,000	-18.5%	\$115	-9.4%	69	17	53	8	15.1	85.3%
YTD:	25	-19.4%	\$4,888,750	-22.5%	\$195,550	-3.9%	\$165,000	-21.4%	\$119	-6.7%	57	112	42	34		90.2%
Condominium	1	0.0%	\$1,000,000	263.6%	\$1,000,000	263.6%	\$1,000,000	263.6%	\$128	-14.5%	9	10	12	3	5.8	0.0%
YTD:	14	55.6%	\$7,426,000	81.0%	\$530,429	16.4%	\$222,000	-19.3%	\$143	-3.0%	26	35	8	18		95.1%
<u>New Construction</u>																
Residential (SF/COND/TH)	104	-2.8%	\$28,880,867	-22.2%	\$277,701	-19.9%	\$241,975	-24.4%	\$156	-6.1%	44	160	311	100	3.4	96.8%
YTD:	618	18.2%	\$184,631,591	2.7%	\$298,757	-13.1%	\$252,985	-16.8%	\$158	-4.1%	56	1,088	342	661		97.9%
Single Family	100	2.0%	\$28,093,817	-20.4%	\$280,938	-22.0%	\$245,603	-26.1%	\$156	-7.5%	39	152	293	98	3.4	96.7%
YTD:	578	15.1%	\$176,728,451	0.7%	\$305,759	-12.5%	\$260,395	-16.1%	\$159	-4.0%	51	1,036	316	621		98.1%
Townhouse	4	-55.6%	\$800,000	-55.4%	\$200,000	0.4%	\$200,000	0.1%	\$143	8.0%	158	8	18	2	3.1	99.0%
YTD:	40	90.5%	\$7,938,150	84.0%	\$198,454	-3.4%	\$195,000	-4.7%	\$142	1.6%	135	52	25	40		94.0%
Condominium	-	0.0%	-	0.0%	-	0.0%	-	0.0%	-	0.0%	-	-	-	-	-	0.0%
YTD:	-	0.0%	-	0.0%	-	0.0%	-	0.0%	-	0.0%	-	-	1	-		0.0%

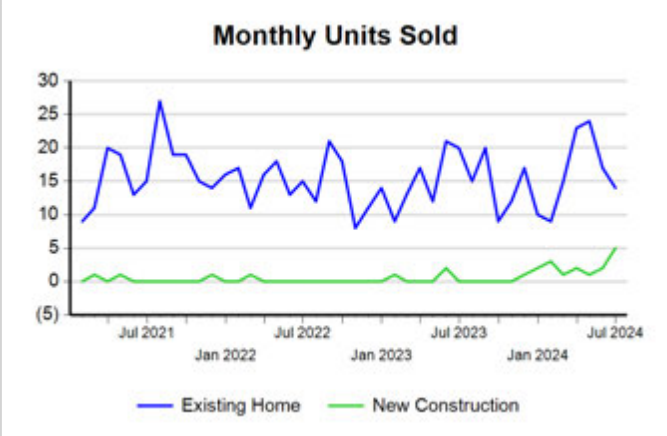
* Closed Sale counts for most recent 3 months are Preliminary.

Trend Analysis By County: Hockley County

Residential, All (New and Existing)



Single Family, New vs. Existing



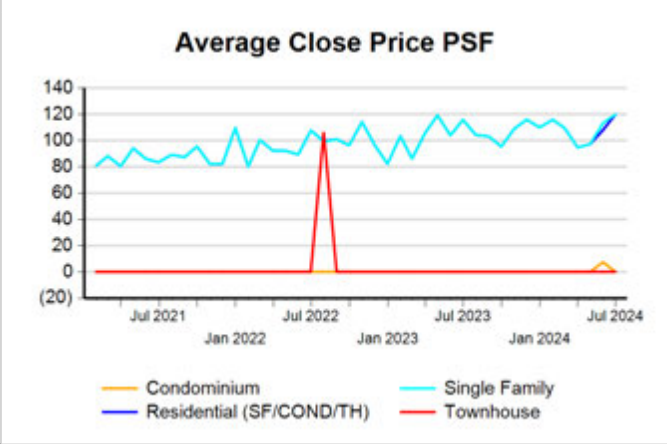
COND/TH, All (New and Existing)



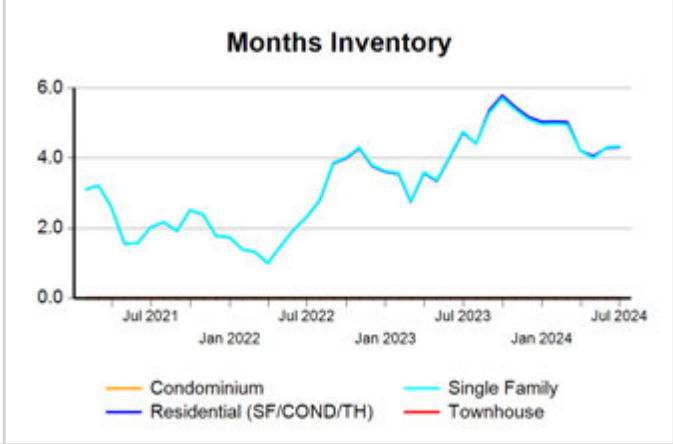
All (New and Existing) Construction



All (New and Existing) Construction



All (New and Existing) Construction



* Closed Sale counts for most recent 3 months are Preliminary.

Trend Analysis By County: Lubbock County

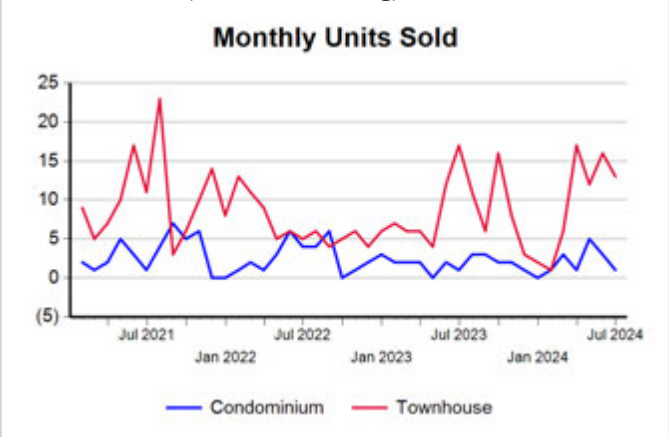
Residential, All (New and Existing)



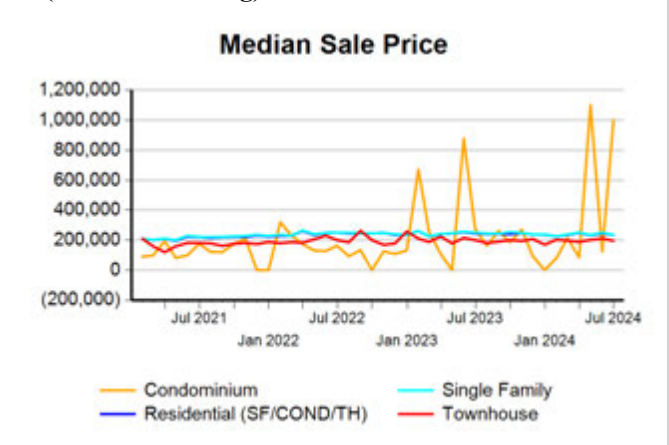
Single Family, New vs. Existing



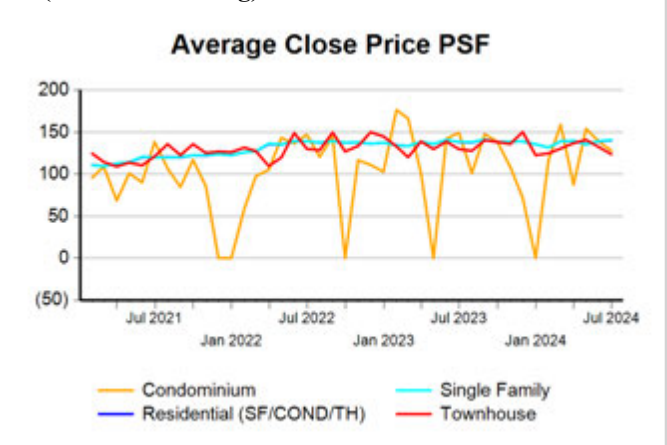
COND/TH, All (New and Existing)



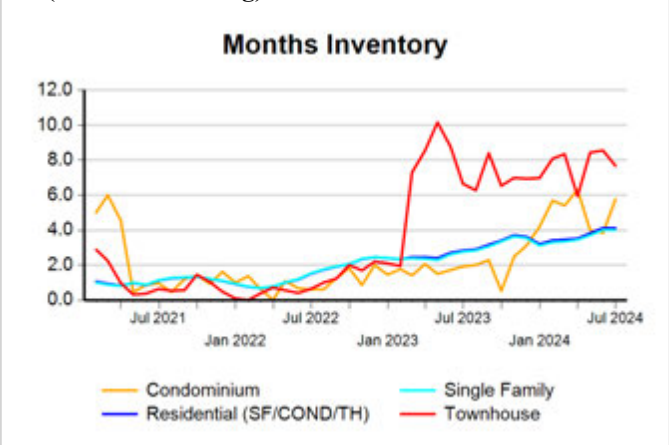
All (New and Existing) Construction



All (New and Existing) Construction

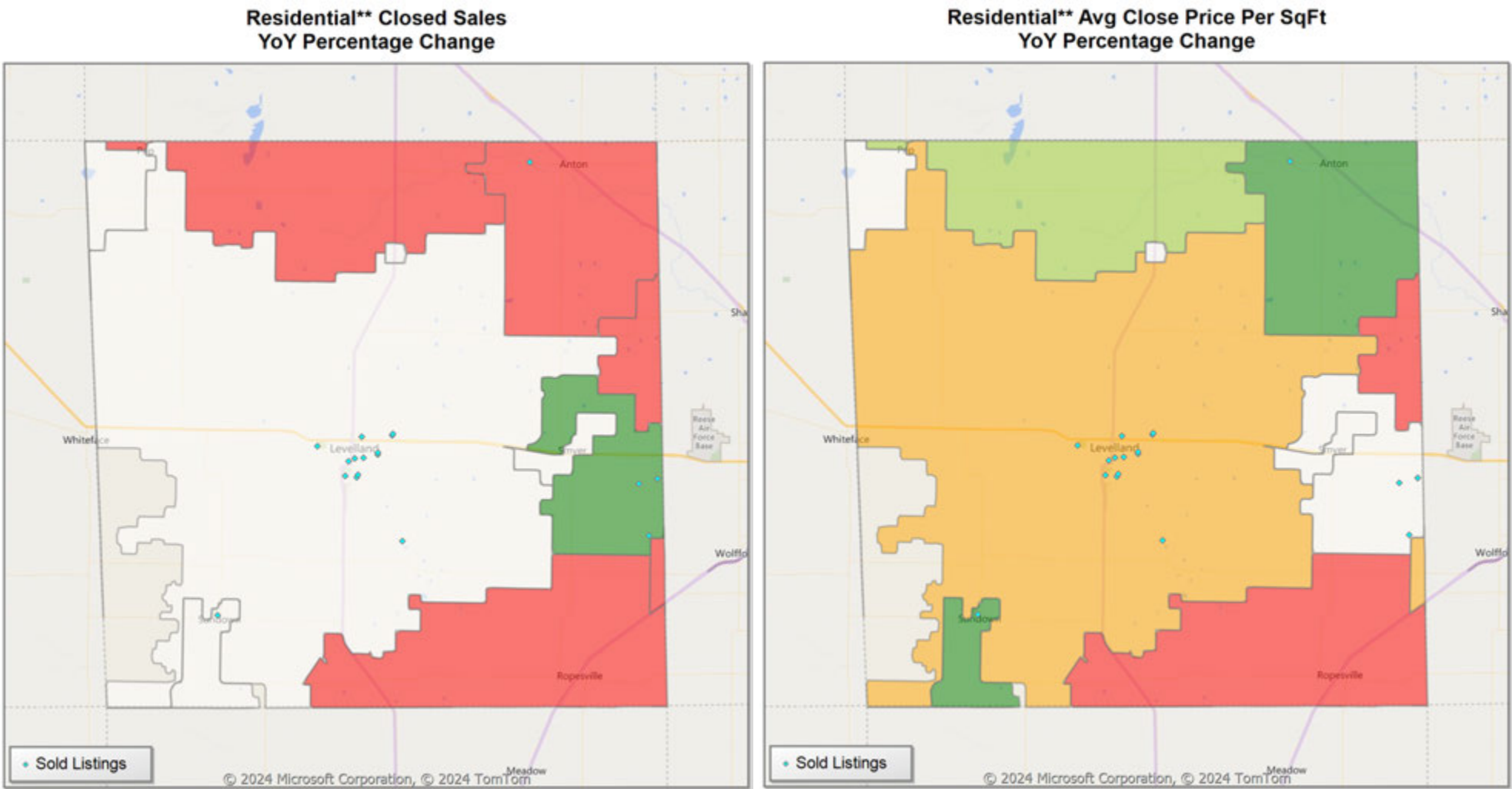


All (New and Existing) Construction



* Closed Sale counts for most recent 3 months are Preliminary.

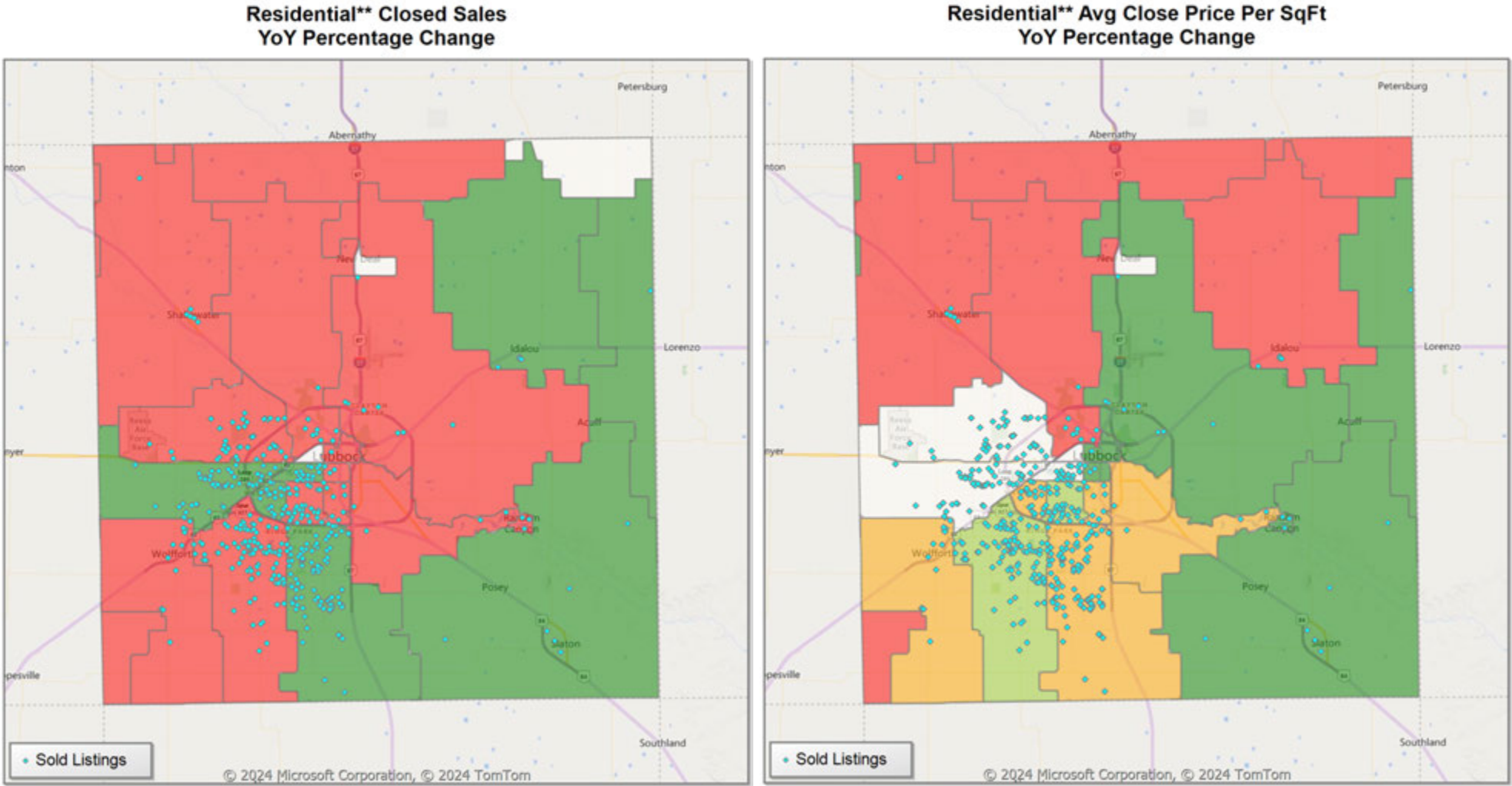
Comparison By Zip Code* in Hockley County



* US Census Zip Code Tabulation Area
** Residential includes Single Family, Condominium and Townhouse.



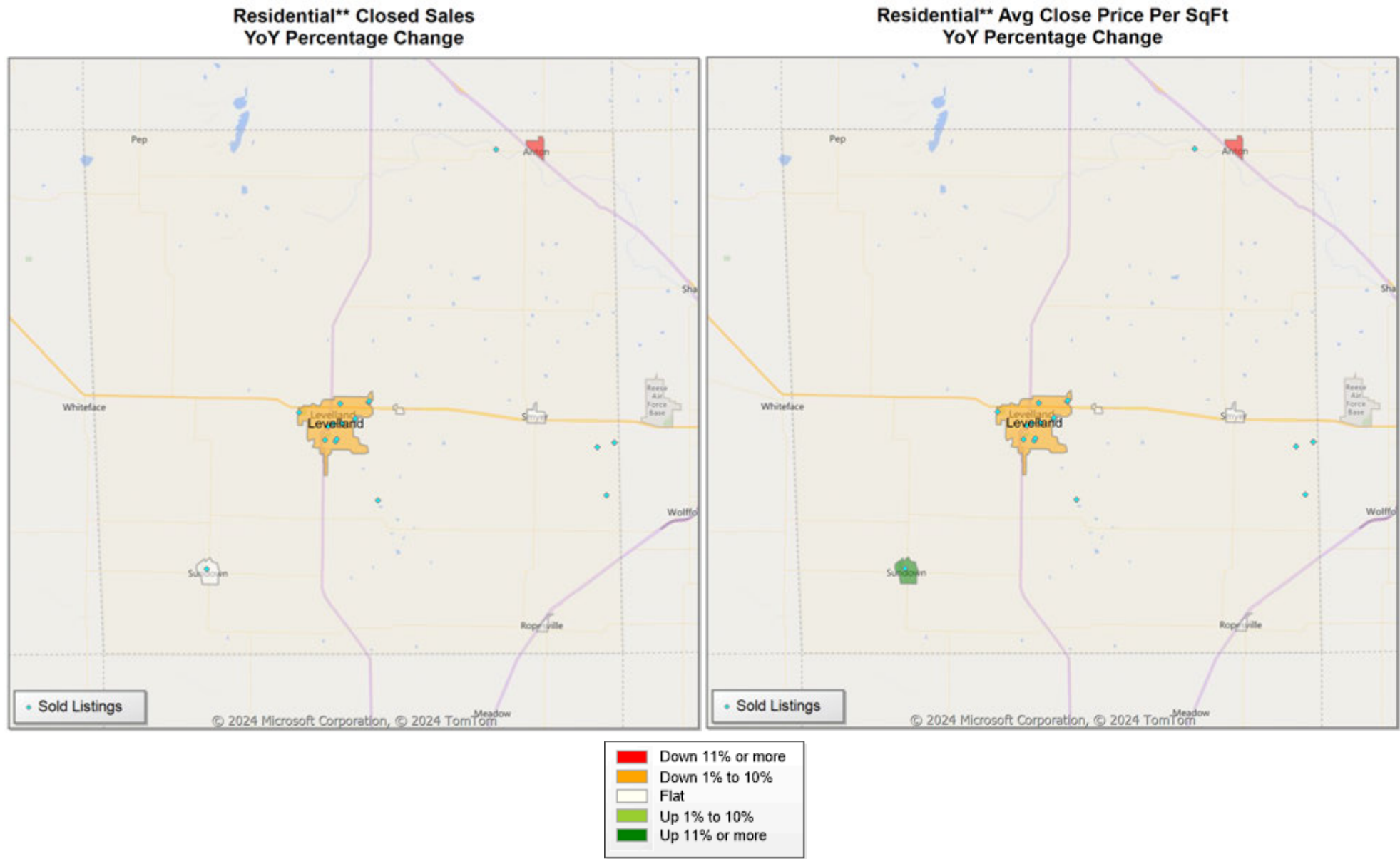
Comparison By Zip Code* in Lubbock County



* US Census Zip Code Tabulation Area
** Residential includes Single Family, Condominium and Townhouse.

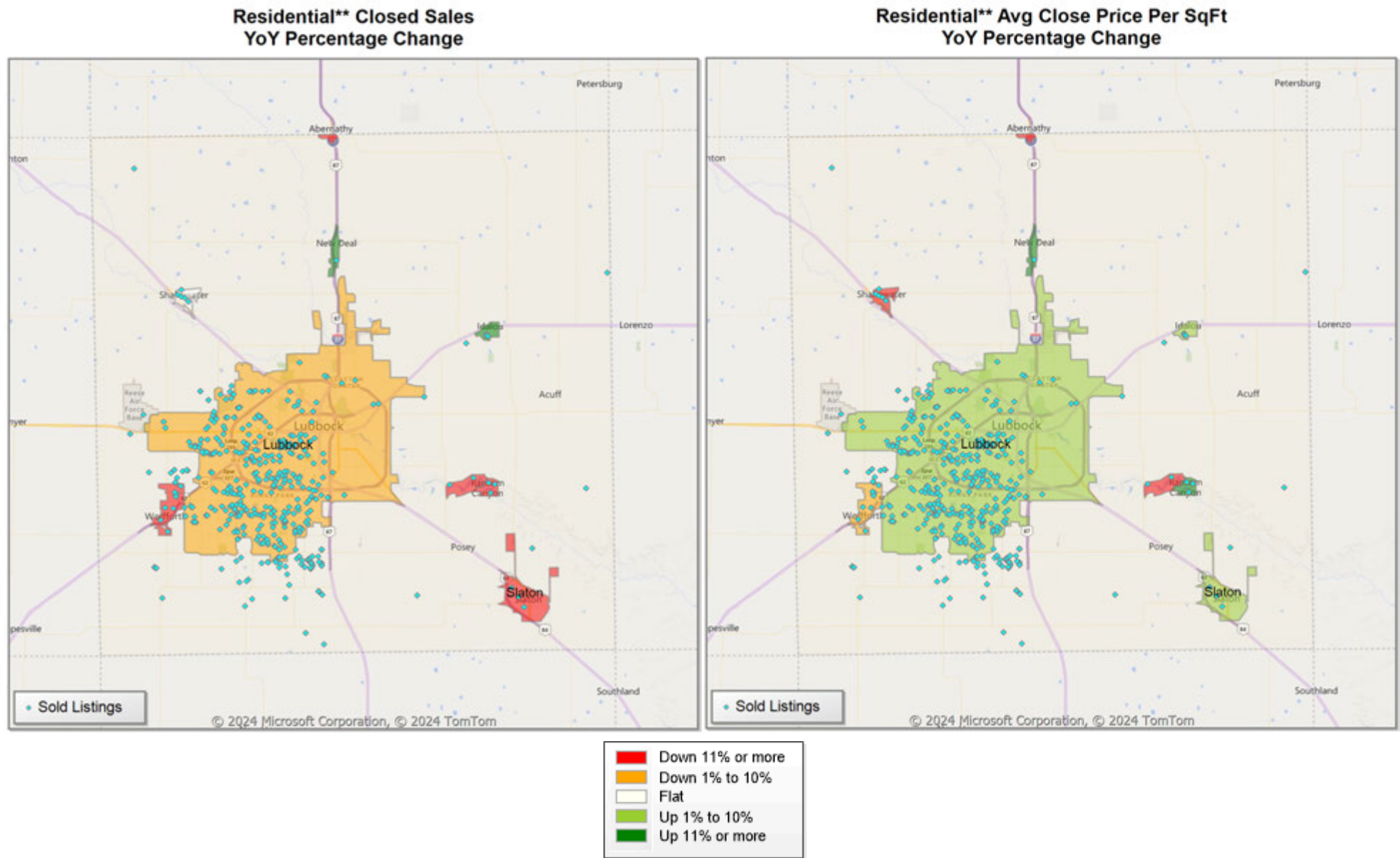


Comparison By Local Market Area* in Hockley County



* Census Place Group
** Residential includes Single Family, Condominium and Townhouse.

Comparison By Local Market Area* in Lubbock County



* Census Place Group
** Residential includes Single Family, Condominium and Townhouse.

Market Analysis By Local Market Area*: Abernathy

Property Type	Closed Sales**	YoY%	Dollar Volume	YoY%	Average Price	YoY%	Median Price	YoY%	Price/ Sqft	YoY%	DOM	New Listings	Active Listings	Pending Sales	Months Inventory	Close To OLP
<u>All(New and Existing)</u>																
Residential (SF/COND/TH)	-	-100.0%	-	-100.0%	-	-100.0%	-	-100.0%	-	-100.0%	-	95	88	13	48.0	0.0%
YTD:	7	0.0%	\$1,731,000	-13.7%	\$247,286	-13.7%	\$173,000	-43.3%	\$130	17.2%	40	115	24	19		95.3%
Single Family	-	-100.0%	-	-100.0%	-	-100.0%	-	-100.0%	-	-100.0%	-	95	88	13	48.0	0.0%
YTD:	7	0.0%	\$1,731,000	-13.7%	\$247,286	-13.7%	\$173,000	-43.3%	\$130	17.2%	40	115	24	19		95.3%
Townhouse	-	0.0%	-	0.0%	-	0.0%	-	0.0%	-	0.0%	-	-	-	-	-	0.0%
YTD:	-	0.0%	-	0.0%	-	0.0%	-	0.0%	-	0.0%	-	-	-	-	-	0.0%
Condominium	-	0.0%	-	0.0%	-	0.0%	-	0.0%	-	0.0%	-	-	-	-	-	0.0%
YTD:	-	0.0%	-	0.0%	-	0.0%	-	0.0%	-	0.0%	-	-	-	-	-	0.0%
<u>Existing Home</u>																
Residential (SF/COND/TH)	-	-100.0%	-	-100.0%	-	-100.0%	-	-100.0%	-	-100.0%	-	47	43	8	24.6	0.0%
YTD:	6	-14.3%	\$1,156,000	-42.4%	\$192,667	-32.8%	\$169,000	-44.6%	\$112	1.3%	30	64	15	13		96.0%
Single Family	-	-100.0%	-	-100.0%	-	-100.0%	-	-100.0%	-	-100.0%	-	47	43	8	24.6	0.0%
YTD:	6	-14.3%	\$1,156,000	-42.4%	\$192,667	-32.8%	\$169,000	-44.6%	\$112	1.3%	30	64	15	13		96.0%
Townhouse	-	0.0%	-	0.0%	-	0.0%	-	0.0%	-	0.0%	-	-	-	-	-	0.0%
YTD:	-	0.0%	-	0.0%	-	0.0%	-	0.0%	-	0.0%	-	-	-	-	-	0.0%
Condominium	-	0.0%	-	0.0%	-	0.0%	-	0.0%	-	0.0%	-	-	-	-	-	0.0%
YTD:	-	0.0%	-	0.0%	-	0.0%	-	0.0%	-	0.0%	-	-	-	-	-	0.0%
<u>New Construction</u>																
Residential (SF/COND/TH)	-	0.0%	-	0.0%	-	0.0%	-	0.0%	-	0.0%	-	48	45	5	540.0	0.0%
YTD:	1	100.0%	\$575,000	100.0%	\$575,000	100.0%	\$575,000	100.0%	\$236	100.0%	98	51	10	6		92.0%
Single Family	-	0.0%	-	0.0%	-	0.0%	-	0.0%	-	0.0%	-	48	45	5	540.0	0.0%
YTD:	1	100.0%	\$575,000	100.0%	\$575,000	100.0%	\$575,000	100.0%	\$236	100.0%	98	51	10	6		92.0%
Townhouse	-	0.0%	-	0.0%	-	0.0%	-	0.0%	-	0.0%	-	-	-	-	-	0.0%
YTD:	-	0.0%	-	0.0%	-	0.0%	-	0.0%	-	0.0%	-	-	-	-	-	0.0%
Condominium	-	0.0%	-	0.0%	-	0.0%	-	0.0%	-	0.0%	-	-	-	-	-	0.0%
YTD:	-	0.0%	-	0.0%	-	0.0%	-	0.0%	-	0.0%	-	-	-	-	-	0.0%

* Local Market Area Code: 2; Type: Census Place Group
** Closed Sale counts for most recent 3 months are Preliminary.

Market Analysis By Local Market Area*: Anton

Property Type	Closed Sales**	YoY%	Dollar Volume	YoY%	Average Price	YoY%	Median Price	YoY%	Price/ Sqft	YoY%	DOM	New Listings	Active Listings	Pending Sales	Months Inventory	Close To OLP
<u>All(New and Existing)</u>																
Residential (SF/COND/TH)	-	-100.0%	-	-100.0%	-	-100.0%	-	-100.0%	-	-100.0%	-	94	90	10	135.0	0.0%
YTD:	3	-40.0%	\$820,000	52.3%	\$273,333	153.8%	\$135,000	40.6%	\$139	98.4%	59	104	20	13		95.0%
Single Family	-	-100.0%	-	-100.0%	-	-100.0%	-	-100.0%	-	-100.0%	-	94	90	10	135.0	0.0%
YTD:	3	-40.0%	\$820,000	52.3%	\$273,333	153.8%	\$135,000	40.6%	\$139	98.4%	59	104	20	13		95.0%
Townhouse	-	0.0%	-	0.0%	-	0.0%	-	0.0%	-	0.0%	-	-	-	-	-	0.0%
YTD:	-	0.0%	-	0.0%	-	0.0%	-	0.0%	-	0.0%	-	-	-	-	-	0.0%
Condominium	-	0.0%	-	0.0%	-	0.0%	-	0.0%	-	0.0%	-	-	-	-	-	0.0%
YTD:	-	0.0%	-	0.0%	-	0.0%	-	0.0%	-	0.0%	-	-	-	-	-	0.0%
<u>Existing Home</u>																
Residential (SF/COND/TH)	-	-100.0%	-	-100.0%	-	-100.0%	-	-100.0%	-	-100.0%	-	46	45	5	77.1	0.0%
YTD:	2	-60.0%	\$245,000	-54.5%	\$122,500	13.7%	\$122,500	27.6%	\$91	29.8%	40	53	11	7		96.6%
Single Family	-	-100.0%	-	-100.0%	-	-100.0%	-	-100.0%	-	-100.0%	-	46	45	5	77.1	0.0%
YTD:	2	-60.0%	\$245,000	-54.5%	\$122,500	13.7%	\$122,500	27.6%	\$91	29.8%	40	53	11	7		96.6%
Townhouse	-	0.0%	-	0.0%	-	0.0%	-	0.0%	-	0.0%	-	-	-	-	-	0.0%
YTD:	-	0.0%	-	0.0%	-	0.0%	-	0.0%	-	0.0%	-	-	-	-	-	0.0%
Condominium	-	0.0%	-	0.0%	-	0.0%	-	0.0%	-	0.0%	-	-	-	-	-	0.0%
YTD:	-	0.0%	-	0.0%	-	0.0%	-	0.0%	-	0.0%	-	-	-	-	-	0.0%
<u>New Construction</u>																
Residential (SF/COND/TH)	-	0.0%	-	0.0%	-	0.0%	-	0.0%	-	0.0%	-	48	45	5	540.0	0.0%
YTD:	1	100.0%	\$575,000	100.0%	\$575,000	100.0%	\$575,000	100.0%	\$236	100.0%	98	51	10	6		92.0%
Single Family	-	0.0%	-	0.0%	-	0.0%	-	0.0%	-	0.0%	-	48	45	5	540.0	0.0%
YTD:	1	100.0%	\$575,000	100.0%	\$575,000	100.0%	\$575,000	100.0%	\$236	100.0%	98	51	10	6		92.0%
Townhouse	-	0.0%	-	0.0%	-	0.0%	-	0.0%	-	0.0%	-	-	-	-	-	0.0%
YTD:	-	0.0%	-	0.0%	-	0.0%	-	0.0%	-	0.0%	-	-	-	-	-	0.0%
Condominium	-	0.0%	-	0.0%	-	0.0%	-	0.0%	-	0.0%	-	-	-	-	-	0.0%
YTD:	-	0.0%	-	0.0%	-	0.0%	-	0.0%	-	0.0%	-	-	-	-	-	0.0%

* Local Market Area Code: 1014; Type: Census Place Group
** Closed Sale counts for most recent 3 months are Preliminary.

Market Analysis By Local Market Area*: Buffalo Springs

Property Type	Closed Sales**	YoY%	Dollar Volume	YoY%	Average Price	YoY%	Median Price	YoY%	Price/ Sqft	YoY%	DOM	New Listings	Active Listings	Pending Sales	Months Inventory	Close To OLP
All(New and Existing)																
Residential (SF/COND/TH)	1	-50.0%	\$331,500	-57.0%	\$331,500	-13.9%	\$331,500	-13.9%	\$138	-28.0%	66	94	89	11	106.8	97.5%
YTD:	8	33.3%	\$2,643,500	49.9%	\$330,438	12.4%	\$345,750	15.3%	\$173	3.6%	53	110	18	18		93.3%
Single Family	1	-50.0%	\$331,500	-57.0%	\$331,500	-13.9%	\$331,500	-13.9%	\$138	-28.0%	66	94	89	11	106.8	97.5%
YTD:	8	33.3%	\$2,643,500	49.9%	\$330,438	12.4%	\$345,750	15.3%	\$173	3.6%	53	110	18	18		93.3%
Townhouse	-	0.0%	-	0.0%	-	0.0%	-	0.0%	-	0.0%	-	-	-	-	-	0.0%
YTD:	-	0.0%	-	0.0%	-	0.0%	-	0.0%	-	0.0%	-	-	-	-	-	0.0%
Condominium	-	0.0%	-	0.0%	-	0.0%	-	0.0%	-	0.0%	-	-	-	-	-	0.0%
YTD:	-	0.0%	-	0.0%	-	0.0%	-	0.0%	-	0.0%	-	-	-	-	-	0.0%
Existing Home																
Residential (SF/COND/TH)	1	-50.0%	\$331,500	-57.0%	\$331,500	-13.9%	\$331,500	-13.9%	\$138	-28.0%	66	46	44	6	58.7	97.5%
YTD:	7	16.7%	\$2,068,500	17.3%	\$295,500	0.5%	\$331,500	10.5%	\$165	-1.7%	47	59	9	12		93.5%
Single Family	1	-50.0%	\$331,500	-57.0%	\$331,500	-13.9%	\$331,500	-13.9%	\$138	-28.0%	66	46	44	6	58.7	97.5%
YTD:	7	16.7%	\$2,068,500	17.3%	\$295,500	0.5%	\$331,500	10.5%	\$165	-1.7%	47	59	9	12		93.5%
Townhouse	-	0.0%	-	0.0%	-	0.0%	-	0.0%	-	0.0%	-	-	-	-	-	0.0%
YTD:	-	0.0%	-	0.0%	-	0.0%	-	0.0%	-	0.0%	-	-	-	-	-	0.0%
Condominium	-	0.0%	-	0.0%	-	0.0%	-	0.0%	-	0.0%	-	-	-	-	-	0.0%
YTD:	-	0.0%	-	0.0%	-	0.0%	-	0.0%	-	0.0%	-	-	-	-	-	0.0%
New Construction																
Residential (SF/COND/TH)	-	0.0%	-	0.0%	-	0.0%	-	0.0%	-	0.0%	-	48	45	5	540.0	0.0%
YTD:	1	100.0%	\$575,000	100.0%	\$575,000	100.0%	\$575,000	100.0%	\$236	100.0%	98	51	10	6		92.0%
Single Family	-	0.0%	-	0.0%	-	0.0%	-	0.0%	-	0.0%	-	48	45	5	540.0	0.0%
YTD:	1	100.0%	\$575,000	100.0%	\$575,000	100.0%	\$575,000	100.0%	\$236	100.0%	98	51	10	6		92.0%
Townhouse	-	0.0%	-	0.0%	-	0.0%	-	0.0%	-	0.0%	-	-	-	-	-	0.0%
YTD:	-	0.0%	-	0.0%	-	0.0%	-	0.0%	-	0.0%	-	-	-	-	-	0.0%
Condominium	-	0.0%	-	0.0%	-	0.0%	-	0.0%	-	0.0%	-	-	-	-	-	0.0%
YTD:	-	0.0%	-	0.0%	-	0.0%	-	0.0%	-	0.0%	-	-	-	-	-	0.0%

* Local Market Area Code: 135; Type: Census Place Group
** Closed Sale counts for most recent 3 months are Preliminary.

Market Analysis By Local Market Area*: Idalou

Property Type	Closed Sales**	YoY%	Dollar Volume	YoY%	Average Price	YoY%	Median Price	YoY%	Price/ Sqft	YoY%	DOM	New Listings	Active Listings	Pending Sales	Months Inventory	Close To OLP
<u>All(New and Existing)</u>																
Residential (SF/COND/TH)	2	100.0%	\$652,000	146.0%	\$326,000	23.0%	\$326,000	23.0%	\$156	9.5%	17	95	86	15	64.5	0.0%
YTD:	10	42.9%	\$2,430,000	24.1%	\$243,000	-13.2%	\$207,500	-21.7%	\$120	-14.2%	61	111	20	23		89.2%
Single Family	2	100.0%	\$652,000	146.0%	\$326,000	23.0%	\$326,000	23.0%	\$156	9.5%	17	95	86	15	64.5	0.0%
YTD:	10	42.9%	\$2,430,000	24.1%	\$243,000	-13.2%	\$207,500	-21.7%	\$120	-14.2%	61	111	20	23		89.2%
Townhouse	-	0.0%	-	0.0%	-	0.0%	-	0.0%	-	0.0%	-	-	-	-	-	0.0%
YTD:	-	0.0%	-	0.0%	-	0.0%	-	0.0%	-	0.0%	-	-	-	-	-	0.0%
Condominium	-	0.0%	-	0.0%	-	0.0%	-	0.0%	-	0.0%	-	-	-	-	-	0.0%
YTD:	-	0.0%	-	0.0%	-	0.0%	-	0.0%	-	0.0%	-	-	-	-	-	0.0%
<u>Existing Home</u>																
Residential (SF/COND/TH)	2	100.0%	\$652,000	146.0%	\$326,000	23.0%	\$326,000	23.0%	\$156	9.5%	17	47	41	10	32.8	0.0%
YTD:	9	50.0%	\$1,855,000	7.9%	\$206,111	-28.1%	\$205,000	-26.1%	\$107	-18.7%	57	60	11	17		88.8%
Single Family	2	100.0%	\$652,000	146.0%	\$326,000	23.0%	\$326,000	23.0%	\$156	9.5%	17	47	41	10	32.8	0.0%
YTD:	9	50.0%	\$1,855,000	7.9%	\$206,111	-28.1%	\$205,000	-26.1%	\$107	-18.7%	57	60	11	17		88.8%
Townhouse	-	0.0%	-	0.0%	-	0.0%	-	0.0%	-	0.0%	-	-	-	-	-	0.0%
YTD:	-	0.0%	-	0.0%	-	0.0%	-	0.0%	-	0.0%	-	-	-	-	-	0.0%
Condominium	-	0.0%	-	0.0%	-	0.0%	-	0.0%	-	0.0%	-	-	-	-	-	0.0%
YTD:	-	0.0%	-	0.0%	-	0.0%	-	0.0%	-	0.0%	-	-	-	-	-	0.0%
<u>New Construction</u>																
Residential (SF/COND/TH)	-	0.0%	-	0.0%	-	0.0%	-	0.0%	-	0.0%	-	48	45	5	540.0	0.0%
YTD:	1	0.0%	\$575,000	139.6%	\$575,000	139.6%	\$575,000	139.6%	\$236	25.1%	98	51	10	6		92.0%
Single Family	-	0.0%	-	0.0%	-	0.0%	-	0.0%	-	0.0%	-	48	45	5	540.0	0.0%
YTD:	1	0.0%	\$575,000	139.6%	\$575,000	139.6%	\$575,000	139.6%	\$236	25.1%	98	51	10	6		92.0%
Townhouse	-	0.0%	-	0.0%	-	0.0%	-	0.0%	-	0.0%	-	-	-	-	-	0.0%
YTD:	-	0.0%	-	0.0%	-	0.0%	-	0.0%	-	0.0%	-	-	-	-	-	0.0%
Condominium	-	0.0%	-	0.0%	-	0.0%	-	0.0%	-	0.0%	-	-	-	-	-	0.0%
YTD:	-	0.0%	-	0.0%	-	0.0%	-	0.0%	-	0.0%	-	-	-	-	-	0.0%

* Local Market Area Code: 456; Type: Census Place Group
** Closed Sale counts for most recent 3 months are Preliminary.

Market Analysis By Local Market Area*: Levelland

Property Type	Closed Sales**	YoY%	Dollar Volume	YoY%	Average Price	YoY%	Median Price	YoY%	Price/ Sqft	YoY%	DOM	New Listings	Active Listings	Pending Sales	Months Inventory	Close To OLP
<u>All(New and Existing)</u>																
Residential (SF/COND/TH)	11	-8.3%	\$2,418,900	-5.7%	\$219,900	2.9%	\$216,500	6.9%	\$102	-3.3%	75	100	113	18	10.0	88.0%
YTD:	76	26.7%	\$14,279,399	22.2%	\$187,887	-3.6%	\$187,450	-1.3%	\$96	-1.1%	74	188	51	84		92.5%
Single Family	11	-8.3%	\$2,418,900	-5.7%	\$219,900	2.9%	\$216,500	6.9%	\$102	-3.3%	75	100	113	18	10.1	88.0%
YTD:	75	25.0%	\$14,139,399	21.0%	\$188,525	-3.2%	\$189,000	-0.5%	\$97	0.2%	71	188	51	83		93.0%
Townhouse	-	0.0%	-	0.0%	-	0.0%	-	0.0%	-	0.0%	-	-	-	-	-	0.0%
YTD:	-	0.0%	-	0.0%	-	0.0%	-	0.0%	-	0.0%	-	-	-	-	-	0.0%
Condominium	-	0.0%	-	0.0%	-	0.0%	-	0.0%	-	0.0%	-	-	-	-	-	0.0%
YTD:	1	100.0%	\$140,000	100.0%	\$140,000	100.0%	\$140,000	100.0%	\$7	100.0%	255	-	1	1		58.6%
<u>Existing Home</u>																
Residential (SF/COND/TH)	10	-16.7%	\$2,183,900	-14.9%	\$218,390	2.2%	\$211,200	4.3%	\$99	-6.4%	69	52	67	13	6.0	86.0%
YTD:	74	23.3%	\$13,469,399	15.2%	\$182,019	-6.6%	\$185,450	-2.4%	\$93	-3.6%	73	136	41	77		92.4%
Single Family	10	-16.7%	\$2,183,900	-14.9%	\$218,390	2.2%	\$211,200	4.3%	\$99	-6.4%	69	52	67	13	6.1	86.0%
YTD:	73	21.7%	\$13,329,399	14.1%	\$182,595	-6.3%	\$185,900	-2.2%	\$95	-2.3%	70	136	41	76		92.9%
Townhouse	-	0.0%	-	0.0%	-	0.0%	-	0.0%	-	0.0%	-	-	-	-	-	0.0%
YTD:	-	0.0%	-	0.0%	-	0.0%	-	0.0%	-	0.0%	-	-	-	-	-	0.0%
Condominium	-	0.0%	-	0.0%	-	0.0%	-	0.0%	-	0.0%	-	-	-	-	-	0.0%
YTD:	1	100.0%	\$140,000	100.0%	\$140,000	100.0%	\$140,000	100.0%	\$7	100.0%	255	-	1	1		58.6%
<u>New Construction</u>																
Residential (SF/COND/TH)	1	100.0%	\$235,000	100.0%	\$235,000	100.0%	\$235,000	100.0%	\$134	100.0%	133	48	46	5	276.0	98.1%
YTD:	2	100.0%	\$810,000	100.0%	\$405,000	100.0%	\$405,000	100.0%	\$185	100.0%	115	52	10	7		95.0%
Single Family	1	100.0%	\$235,000	100.0%	\$235,000	100.0%	\$235,000	100.0%	\$134	100.0%	133	48	46	5	276.0	98.1%
YTD:	2	100.0%	\$810,000	100.0%	\$405,000	100.0%	\$405,000	100.0%	\$185	100.0%	115	52	10	7		95.0%
Townhouse	-	0.0%	-	0.0%	-	0.0%	-	0.0%	-	0.0%	-	-	-	-	-	0.0%
YTD:	-	0.0%	-	0.0%	-	0.0%	-	0.0%	-	0.0%	-	-	-	-	-	0.0%
Condominium	-	0.0%	-	0.0%	-	0.0%	-	0.0%	-	0.0%	-	-	-	-	-	0.0%
YTD:	-	0.0%	-	0.0%	-	0.0%	-	0.0%	-	0.0%	-	-	-	-	-	0.0%

* Local Market Area Code: 220; Type: Census Place Group
** Closed Sale counts for most recent 3 months are Preliminary.

Market Analysis By Local Market Area*: Lubbock

Property Type	Closed Sales**	YoY%	Dollar Volume	YoY%	Average Price	YoY%	Median Price	YoY%	Price/ Sqft	YoY%	DOM	New Listings	Active Listings	Pending Sales	Months Inventory	Close To OLP
<u>All(New and Existing)</u>																
Residential (SF/COND/TH)	331	-10.5%	\$90,129,327	-2.2%	\$272,294	9.3%	\$224,000	-2.6%	\$134	3.4%	37	184	782	236	2.9	93.2%
YTD:	1,618	-7.8%	\$421,585,807	-6.5%	\$260,560	1.4%	\$224,000	-0.8%	\$130	-0.3%	43	2,983	912	1,726		95.5%
Single Family	318	-10.2%	\$87,629,436	-1.5%	\$275,564	9.6%	\$225,000	-3.0%	\$134	3.8%	35	177	730	226	2.8	93.5%
YTD:	1,548	-9.0%	\$404,398,219	-7.8%	\$261,239	1.3%	\$225,000	-1.3%	\$130	-0.4%	41	2,839	852	1,647		95.6%
Townhouse	12	-20.0%	\$2,260,300	-22.5%	\$188,358	-3.1%	\$195,000	-1.1%	\$122	-5.2%	102	5	46	9	5.9	89.9%
YTD:	56	21.7%	\$11,249,300	19.2%	\$200,880	-2.1%	\$195,000	-6.0%	\$134	2.1%	92	121	53	65		93.5%
Condominium	-	-100.0%	-	-100.0%	-	-100.0%	-	-100.0%	-	-100.0%	-	2	6	1	3.1	0.0%
YTD:	12	50.0%	\$5,426,000	82.1%	\$452,167	21.4%	\$170,250	-31.2%	\$145	1.5%	29	23	7	14		95.1%
<u>Existing Home</u>																
Residential (SF/COND/TH)	305	-3.8%	\$83,078,405	8.4%	\$272,388	12.7%	\$222,000	-0.1%	\$132	5.4%	35	129	665	210	2.9	92.7%
YTD:	1,413	-7.0%	\$362,129,944	-2.3%	\$256,284	5.0%	\$219,500	2.1%	\$127	1.2%	39	2,648	788	1,503		95.2%
Single Family	297	-3.9%	\$81,643,151	8.8%	\$274,893	13.2%	\$223,000	-0.9%	\$133	6.0%	34	123	622	202	2.8	93.1%
YTD:	1,376	-7.1%	\$351,735,292	-2.7%	\$255,622	4.7%	\$220,000	2.3%	\$127	1.3%	39	2,535	745	1,457		95.3%
Townhouse	8	14.3%	\$1,460,300	10.3%	\$182,538	-3.5%	\$158,750	-12.8%	\$111	-10.7%	74	4	37	7	11.4	85.3%
YTD:	24	-20.0%	\$4,703,750	-22.8%	\$195,990	-3.6%	\$162,525	-21.7%	\$117	-7.2%	59	90	36	32		90.2%
Condominium	-	-100.0%	-	-100.0%	-	-100.0%	-	-100.0%	-	-100.0%	-	2	6	1	3.1	0.0%
YTD:	12	50.0%	\$5,426,000	82.1%	\$452,167	21.4%	\$170,250	-31.2%	\$145	1.5%	29	23	6	14		95.1%
<u>New Construction</u>																
Residential (SF/COND/TH)	26	-50.9%	\$7,050,753	-54.7%	\$271,183	-7.7%	\$262,050	-5.1%	\$154	-0.2%	65	55	117	26	3.2	97.5%
YTD:	205	-13.1%	\$59,425,328	-26.0%	\$289,880	-14.8%	\$258,822	-13.7%	\$155	-6.3%	69	335	124	223		97.5%
Single Family	22	-51.1%	\$6,264,311	-55.2%	\$284,741	-8.3%	\$277,000	-2.9%	\$156	-1.4%	47	54	108	24	3.4	97.0%
YTD:	173	-21.4%	\$52,895,653	-31.2%	\$305,755	-12.5%	\$271,314	-12.2%	\$157	-6.4%	61	304	106	190		97.8%
Townhouse	4	-50.0%	\$800,000	-49.8%	\$200,000	0.5%	\$200,000	0.7%	\$143	8.4%	158	1	9	2	2.0	99.0%
YTD:	32	100.0%	\$6,545,550	96.0%	\$204,548	-2.0%	\$205,000	-2.3%	\$146	4.5%	116	31	17	33		95.4%
Condominium	-	0.0%	-	0.0%	-	0.0%	-	0.0%	-	0.0%	-	-	-	-	-	0.0%
YTD:	-	0.0%	-	0.0%	-	0.0%	-	0.0%	-	0.0%	-	-	1	-		0.0%

* Local Market Area Code: 596; Type: Census Place Group
** Closed Sale counts for most recent 3 months are Preliminary.

Market Analysis By Local Market Area*: New Deal

Property Type	Closed Sales**		YoY%	Dollar Volume	YoY%	Average Price	YoY%	Median Price	YoY%	Price/ Sqft	YoY%	DOM	New Listings	Active Listings	Pending Sales	Months Inventory	Close To OLP
<u>All(New and Existing)</u>																	
Residential (SF/COND/TH)	1	100.0%		\$215,000	100.0%	\$215,000	100.0%	\$215,000	100.0%	\$126	100.0%	7	94	87	11	174.0	0.0%
YTD:	4	33.3%		\$1,163,000	83.8%	\$290,750	37.8%	\$231,500	18.8%	\$146	41.4%	33	107	18	15		97.4%
Single Family	1	100.0%		\$215,000	100.0%	\$215,000	100.0%	\$215,000	100.0%	\$126	100.0%	7	94	87	11	174.0	0.0%
YTD:	4	33.3%		\$1,163,000	83.8%	\$290,750	37.8%	\$231,500	18.8%	\$146	41.4%	33	107	18	15		97.4%
Townhouse	-	0.0%		-	0.0%	-	0.0%	-	0.0%	-	0.0%	-	-	-	-	-	0.0%
YTD:	-	0.0%		-	0.0%	-	0.0%	-	0.0%	-	0.0%	-	-	-	-	-	0.0%
Condominium	-	0.0%		-	0.0%	-	0.0%	-	0.0%	-	0.0%	-	-	-	-	-	0.0%
YTD:	-	0.0%		-	0.0%	-	0.0%	-	0.0%	-	0.0%	-	-	-	-	-	0.0%
<u>Existing Home</u>																	
Residential (SF/COND/TH)	1	100.0%		\$215,000	100.0%	\$215,000	100.0%	\$215,000	100.0%	\$126	100.0%	7	46	42	6	126.0	0.0%
YTD:	2	-33.3%		\$340,000	-46.3%	\$170,000	-19.4%	\$170,000	-12.8%	\$94	-8.6%	5	55	9	8		100.0%
Single Family	1	100.0%		\$215,000	100.0%	\$215,000	100.0%	\$215,000	100.0%	\$126	100.0%	7	46	42	6	126.0	0.0%
YTD:	2	-33.3%		\$340,000	-46.3%	\$170,000	-19.4%	\$170,000	-12.8%	\$94	-8.6%	5	55	9	8		100.0%
Townhouse	-	0.0%		-	0.0%	-	0.0%	-	0.0%	-	0.0%	-	-	-	-	-	0.0%
YTD:	-	0.0%		-	0.0%	-	0.0%	-	0.0%	-	0.0%	-	-	-	-	-	0.0%
Condominium	-	0.0%		-	0.0%	-	0.0%	-	0.0%	-	0.0%	-	-	-	-	-	0.0%
YTD:	-	0.0%		-	0.0%	-	0.0%	-	0.0%	-	0.0%	-	-	-	-	-	0.0%
<u>New Construction</u>																	
Residential (SF/COND/TH)	-	0.0%		-	0.0%	-	0.0%	-	0.0%	-	0.0%	-	48	45	5	270.0	0.0%
YTD:	2	100.0%		\$823,000	100.0%	\$411,500	100.0%	\$411,500	100.0%	\$197	100.0%	61	52	9	7		96.1%
Single Family	-	0.0%		-	0.0%	-	0.0%	-	0.0%	-	0.0%	-	48	45	5	270.0	0.0%
YTD:	2	100.0%		\$823,000	100.0%	\$411,500	100.0%	\$411,500	100.0%	\$197	100.0%	61	52	9	7		96.1%
Townhouse	-	0.0%		-	0.0%	-	0.0%	-	0.0%	-	0.0%	-	-	-	-	-	0.0%
YTD:	-	0.0%		-	0.0%	-	0.0%	-	0.0%	-	0.0%	-	-	-	-	-	0.0%
Condominium	-	0.0%		-	0.0%	-	0.0%	-	0.0%	-	0.0%	-	-	-	-	-	0.0%
YTD:	-	0.0%		-	0.0%	-	0.0%	-	0.0%	-	0.0%	-	-	-	-	-	0.0%

* Local Market Area Code: 700; Type: Census Place Group
** Closed Sale counts for most recent 3 months are Preliminary.

Market Analysis By Local Market Area*: Opdyke West

Property Type	Closed Sales**	YoY%	Dollar Volume	YoY%	Average Price	YoY%	Median Price	YoY%	Price/ Sqft	YoY%	DOM	New Listings	Active Listings	Pending Sales	Months Inventory	Close To OLP
<u>All(New and Existing)</u>																
Residential (SF/COND/TH)	-	0.0%	-	0.0%	-	0.0%	-	0.0%	-	0.0%	-	94	85	10	1,020.0	0.0%
YTD:	1	100.0%	\$575,000	100.0%	\$575,000	100.0%	\$575,000	100.0%	\$236	100.0%	98	98	19	11		92.0%
Single Family	-	0.0%	-	0.0%	-	0.0%	-	0.0%	-	0.0%	-	94	85	10	1,020.0	0.0%
YTD:	1	100.0%	\$575,000	100.0%	\$575,000	100.0%	\$575,000	100.0%	\$236	100.0%	98	98	19	11		92.0%
Townhouse	-	0.0%	-	0.0%	-	0.0%	-	0.0%	-	0.0%	-	-	-	-	-	0.0%
YTD:	-	0.0%	-	0.0%	-	0.0%	-	0.0%	-	0.0%	-	-	-	-	-	0.0%
Condominium	-	0.0%	-	0.0%	-	0.0%	-	0.0%	-	0.0%	-	-	-	-	-	0.0%
YTD:	-	0.0%	-	0.0%	-	0.0%	-	0.0%	-	0.0%	-	-	-	-	-	0.0%
<u>Existing Home</u>																
Residential (SF/COND/TH)	-	0.0%	-	0.0%	-	0.0%	-	0.0%	-	0.0%	-	46	40	5	-	0.0%
YTD:	-	0.0%	-	0.0%	-	0.0%	-	0.0%	-	0.0%	-	47	20	5		0.0%
Single Family	-	0.0%	-	0.0%	-	0.0%	-	0.0%	-	0.0%	-	46	40	5	-	0.0%
YTD:	-	0.0%	-	0.0%	-	0.0%	-	0.0%	-	0.0%	-	47	20	5		0.0%
Townhouse	-	0.0%	-	0.0%	-	0.0%	-	0.0%	-	0.0%	-	-	-	-	-	0.0%
YTD:	-	0.0%	-	0.0%	-	0.0%	-	0.0%	-	0.0%	-	-	-	-	-	0.0%
Condominium	-	0.0%	-	0.0%	-	0.0%	-	0.0%	-	0.0%	-	-	-	-	-	0.0%
YTD:	-	0.0%	-	0.0%	-	0.0%	-	0.0%	-	0.0%	-	-	-	-	-	0.0%
<u>New Construction</u>																
Residential (SF/COND/TH)	-	0.0%	-	0.0%	-	0.0%	-	0.0%	-	0.0%	-	48	45	5	540.0	0.0%
YTD:	1	100.0%	\$575,000	100.0%	\$575,000	100.0%	\$575,000	100.0%	\$236	100.0%	98	51	10	6		92.0%
Single Family	-	0.0%	-	0.0%	-	0.0%	-	0.0%	-	0.0%	-	48	45	5	540.0	0.0%
YTD:	1	100.0%	\$575,000	100.0%	\$575,000	100.0%	\$575,000	100.0%	\$236	100.0%	98	51	10	6		92.0%
Townhouse	-	0.0%	-	0.0%	-	0.0%	-	0.0%	-	0.0%	-	-	-	-	-	0.0%
YTD:	-	0.0%	-	0.0%	-	0.0%	-	0.0%	-	0.0%	-	-	-	-	-	0.0%
Condominium	-	0.0%	-	0.0%	-	0.0%	-	0.0%	-	0.0%	-	-	-	-	-	0.0%
YTD:	-	0.0%	-	0.0%	-	0.0%	-	0.0%	-	0.0%	-	-	-	-	-	0.0%

* Local Market Area Code: 221; Type: Census Place Group

** Closed Sale counts for most recent 3 months are Preliminary.

Market Analysis By Local Market Area*: Ransom Canyon

Property Type	Closed Sales**	YoY%	Dollar Volume	YoY%	Average Price	YoY%	Median Price	YoY%	Price/ Sqft	YoY%	DOM	New Listings	Active Listings	Pending Sales	Months Inventory	Close To OLP
<u>All(New and Existing)</u>																
Residential (SF/COND/TH)	3	-40.0%	\$1,042,000	-47.9%	\$347,333	-13.2%	\$340,000	-2.9%	\$190	13.2%	11	94	95	12	38.0	0.0%
YTD:	20	66.7%	\$7,566,499	42.0%	\$378,325	-14.8%	\$346,250	-9.7%	\$150	-9.5%	67	135	28	31		95.0%
Single Family	3	-40.0%	\$1,042,000	-47.9%	\$347,333	-13.2%	\$340,000	-2.9%	\$190	13.2%	11	94	95	12	38.0	0.0%
YTD:	20	66.7%	\$7,566,499	42.0%	\$378,325	-14.8%	\$346,250	-9.7%	\$150	-9.5%	67	135	28	31		95.0%
Townhouse	-	0.0%	-	0.0%	-	0.0%	-	0.0%	-	0.0%	-	-	-	-	-	0.0%
YTD:	-	0.0%	-	0.0%	-	0.0%	-	0.0%	-	0.0%	-	-	-	-	-	0.0%
Condominium	-	0.0%	-	0.0%	-	0.0%	-	0.0%	-	0.0%	-	-	-	-	-	0.0%
YTD:	-	0.0%	-	0.0%	-	0.0%	-	0.0%	-	0.0%	-	-	-	-	-	0.0%
<u>Existing Home</u>																
Residential (SF/COND/TH)	3	-40.0%	\$1,042,000	-47.9%	\$347,333	-13.2%	\$340,000	-2.9%	\$190	13.2%	11	46	49	7	21.0	0.0%
YTD:	19	58.3%	\$6,991,499	31.3%	\$367,974	-17.1%	\$345,000	-10.0%	\$145	-12.2%	65	78	16	25		95.2%
Single Family	3	-40.0%	\$1,042,000	-47.9%	\$347,333	-13.2%	\$340,000	-2.9%	\$190	13.2%	11	46	49	7	21.0	0.0%
YTD:	19	58.3%	\$6,991,499	31.3%	\$367,974	-17.1%	\$345,000	-10.0%	\$145	-12.2%	65	78	16	25		95.2%
Townhouse	-	0.0%	-	0.0%	-	0.0%	-	0.0%	-	0.0%	-	-	-	-	-	0.0%
YTD:	-	0.0%	-	0.0%	-	0.0%	-	0.0%	-	0.0%	-	-	-	-	-	0.0%
Condominium	-	0.0%	-	0.0%	-	0.0%	-	0.0%	-	0.0%	-	-	-	-	-	0.0%
YTD:	-	0.0%	-	0.0%	-	0.0%	-	0.0%	-	0.0%	-	-	-	-	-	0.0%
<u>New Construction</u>																
Residential (SF/COND/TH)	-	0.0%	-	0.0%	-	0.0%	-	0.0%	-	0.0%	-	48	46	5	276.0	0.0%
YTD:	1	100.0%	\$575,000	100.0%	\$575,000	100.0%	\$575,000	100.0%	\$236	100.0%	98	57	12	6		92.0%
Single Family	-	0.0%	-	0.0%	-	0.0%	-	0.0%	-	0.0%	-	48	46	5	276.0	0.0%
YTD:	1	100.0%	\$575,000	100.0%	\$575,000	100.0%	\$575,000	100.0%	\$236	100.0%	98	57	12	6		92.0%
Townhouse	-	0.0%	-	0.0%	-	0.0%	-	0.0%	-	0.0%	-	-	-	-	-	0.0%
YTD:	-	0.0%	-	0.0%	-	0.0%	-	0.0%	-	0.0%	-	-	-	-	-	0.0%
Condominium	-	0.0%	-	0.0%	-	0.0%	-	0.0%	-	0.0%	-	-	-	-	-	0.0%
YTD:	-	0.0%	-	0.0%	-	0.0%	-	0.0%	-	0.0%	-	-	-	-	-	0.0%

* Local Market Area Code: 826; Type: Census Place Group
** Closed Sale counts for most recent 3 months are Preliminary.

Market Analysis By Local Market Area*: Ropesville

Property Type	Closed Sales**		YoY%	Dollar Volume	YoY%	Average Price	YoY%	Median Price	YoY%	Price/ Sqft	YoY%	DOM	New Listings	Active Listings	Pending Sales	Months Inventory	Close To OLP
<u>All(New and Existing)</u>																	
Residential (SF/COND/TH)	-	0.0%	-	0.0%	-	0.0%	-	0.0%	-	0.0%	-	94	85	10	340.0	0.0%	
YTD:	1	-50.0%	\$575,000	-16.7%	\$575,000	66.7%	\$575,000	66.7%	\$236	48.9%	98	98	19	11		92.0%	
Single Family	-	0.0%	-	0.0%	-	0.0%	-	0.0%	-	0.0%	-	94	85	10	340.0	0.0%	
YTD:	1	-50.0%	\$575,000	-16.7%	\$575,000	66.7%	\$575,000	66.7%	\$236	48.9%	98	98	19	11		92.0%	
Townhouse	-	0.0%	-	0.0%	-	0.0%	-	0.0%	-	0.0%	-	-	-	-	-	0.0%	
YTD:	-	0.0%	-	0.0%	-	0.0%	-	0.0%	-	0.0%	-	-	-	-	-	0.0%	
Condominium	-	0.0%	-	0.0%	-	0.0%	-	0.0%	-	0.0%	-	-	-	-	-	0.0%	
YTD:	-	0.0%	-	0.0%	-	0.0%	-	0.0%	-	0.0%	-	-	-	-	-	0.0%	
<u>Existing Home</u>																	
Residential (SF/COND/TH)	-	0.0%	-	0.0%	-	0.0%	-	0.0%	-	0.0%	-	46	40	5	240.0	0.0%	
YTD:	-	-100.0%	-	-100.0%	-	-100.0%	-	-100.0%	-	-100.0%	-	47	20	5		0.0%	
Single Family	-	0.0%	-	0.0%	-	0.0%	-	0.0%	-	0.0%	-	46	40	5	240.0	0.0%	
YTD:	-	-100.0%	-	-100.0%	-	-100.0%	-	-100.0%	-	-100.0%	-	47	20	5		0.0%	
Townhouse	-	0.0%	-	0.0%	-	0.0%	-	0.0%	-	0.0%	-	-	-	-	-	0.0%	
YTD:	-	0.0%	-	0.0%	-	0.0%	-	0.0%	-	0.0%	-	-	-	-	-	0.0%	
Condominium	-	0.0%	-	0.0%	-	0.0%	-	0.0%	-	0.0%	-	-	-	-	-	0.0%	
YTD:	-	0.0%	-	0.0%	-	0.0%	-	0.0%	-	0.0%	-	-	-	-	-	0.0%	
<u>New Construction</u>																	
Residential (SF/COND/TH)	-	0.0%	-	0.0%	-	0.0%	-	0.0%	-	0.0%	-	48	45	5	540.0	0.0%	
YTD:	1	0.0%	\$575,000	23.7%	\$575,000	23.7%	\$575,000	23.7%	\$236	27.6%	98	51	10	6		92.0%	
Single Family	-	0.0%	-	0.0%	-	0.0%	-	0.0%	-	0.0%	-	48	45	5	540.0	0.0%	
YTD:	1	0.0%	\$575,000	23.7%	\$575,000	23.7%	\$575,000	23.7%	\$236	27.6%	98	51	10	6		92.0%	
Townhouse	-	0.0%	-	0.0%	-	0.0%	-	0.0%	-	0.0%	-	-	-	-	-	0.0%	
YTD:	-	0.0%	-	0.0%	-	0.0%	-	0.0%	-	0.0%	-	-	-	-	-	0.0%	
Condominium	-	0.0%	-	0.0%	-	0.0%	-	0.0%	-	0.0%	-	-	-	-	-	0.0%	
YTD:	-	0.0%	-	0.0%	-	0.0%	-	0.0%	-	0.0%	-	-	-	-	-	0.0%	

* Local Market Area Code: 222; Type: Census Place Group

** Closed Sale counts for most recent 3 months are Preliminary.

Market Analysis By Local Market Area*: Shallowater

Property Type	Closed Sales**	YoY%	Dollar Volume	YoY%	Average Price	YoY%	Median Price	YoY%	Price/ Sqft	YoY%	DOM	New Listings	Active Listings	Pending Sales	Months Inventory	Close To OLP
<u>All(New and Existing)</u>																
Residential (SF/COND/TH)	4	0.0%	\$730,500	-32.6%	\$182,625	-32.6%	\$192,500	-31.1%	\$97	-31.2%	48	95	98	16	33.6	92.1%
YTD:	22	46.7%	\$5,313,250	24.3%	\$241,511	-15.3%	\$242,500	-19.0%	\$128	-11.6%	58	146	30	37		94.8%
Single Family	4	0.0%	\$730,500	-32.6%	\$182,625	-32.6%	\$192,500	-31.1%	\$97	-31.2%	48	95	98	16	33.6	92.1%
YTD:	22	46.7%	\$5,313,250	24.3%	\$241,511	-15.3%	\$242,500	-19.0%	\$128	-11.6%	58	146	30	37		94.8%
Townhouse	-	0.0%	-	0.0%	-	0.0%	-	0.0%	-	0.0%	-	-	-	-	-	0.0%
YTD:	-	0.0%	-	0.0%	-	0.0%	-	0.0%	-	0.0%	-	-	-	-	-	0.0%
Condominium	-	0.0%	-	0.0%	-	0.0%	-	0.0%	-	0.0%	-	-	-	-	-	0.0%
YTD:	-	0.0%	-	0.0%	-	0.0%	-	0.0%	-	0.0%	-	-	-	-	-	0.0%
<u>Existing Home</u>																
Residential (SF/COND/TH)	4	0.0%	\$730,500	-32.6%	\$182,625	-32.6%	\$192,500	-31.1%	\$97	-31.2%	48	47	47	11	17.6	92.1%
YTD:	20	100.0%	\$4,468,250	80.6%	\$223,413	-9.7%	\$240,000	1.1%	\$121	-10.4%	59	81	15	30		94.8%
Single Family	4	0.0%	\$730,500	-32.6%	\$182,625	-32.6%	\$192,500	-31.1%	\$97	-31.2%	48	47	47	11	17.6	92.1%
YTD:	20	100.0%	\$4,468,250	80.6%	\$223,413	-9.7%	\$240,000	1.1%	\$121	-10.4%	59	81	15	30		94.8%
Townhouse	-	0.0%	-	0.0%	-	0.0%	-	0.0%	-	0.0%	-	-	-	-	-	0.0%
YTD:	-	0.0%	-	0.0%	-	0.0%	-	0.0%	-	0.0%	-	-	-	-	-	0.0%
Condominium	-	0.0%	-	0.0%	-	0.0%	-	0.0%	-	0.0%	-	-	-	-	-	0.0%
YTD:	-	0.0%	-	0.0%	-	0.0%	-	0.0%	-	0.0%	-	-	-	-	-	0.0%
<u>New Construction</u>																
Residential (SF/COND/TH)	-	0.0%	-	0.0%	-	0.0%	-	0.0%	-	0.0%	-	48	51	5	204.0	0.0%
YTD:	2	-60.0%	\$845,000	-53.1%	\$422,500	17.3%	\$422,500	24.3%	\$195	19.3%	51	65	14	7		94.2%
Single Family	-	0.0%	-	0.0%	-	0.0%	-	0.0%	-	0.0%	-	48	51	5	204.0	0.0%
YTD:	2	-60.0%	\$845,000	-53.1%	\$422,500	17.3%	\$422,500	24.3%	\$195	19.3%	51	65	14	7		94.2%
Townhouse	-	0.0%	-	0.0%	-	0.0%	-	0.0%	-	0.0%	-	-	-	-	-	0.0%
YTD:	-	0.0%	-	0.0%	-	0.0%	-	0.0%	-	0.0%	-	-	-	-	-	0.0%
Condominium	-	0.0%	-	0.0%	-	0.0%	-	0.0%	-	0.0%	-	-	-	-	-	0.0%
YTD:	-	0.0%	-	0.0%	-	0.0%	-	0.0%	-	0.0%	-	-	-	-	-	0.0%

* Local Market Area Code: 925; Type: Census Place Group
** Closed Sale counts for most recent 3 months are Preliminary.

Market Analysis By Local Market Area*: Slaton

Property Type	Closed Sales**	YoY%	Dollar Volume	YoY%	Average Price	YoY%	Median Price	YoY%	Price/ Sqft	YoY%	DOM	New Listings	Active Listings	Pending Sales	Months Inventory	Close To OLP
<u>All(New and Existing)</u>																
Residential (SF/COND/TH)	2	-60.0%	\$334,000	-47.2%	\$167,000	32.0%	\$167,000	24.2%	\$90	5.5%	50	96	97	11	20.4	89.1%
YTD:	28	27.3%	\$5,203,900	57.8%	\$185,854	24.0%	\$160,000	11.5%	\$97	5.8%	85	137	34	32		91.4%
Single Family	2	-60.0%	\$334,000	-47.2%	\$167,000	32.0%	\$167,000	24.2%	\$90	5.5%	50	96	96	11	20.2	89.1%
YTD:	28	27.3%	\$5,203,900	57.8%	\$185,854	24.0%	\$160,000	11.5%	\$97	5.8%	85	135	33	32		91.4%
Townhouse	-	0.0%	-	0.0%	-	0.0%	-	0.0%	-	0.0%	-	-	-	-	-	0.0%
YTD:	-	0.0%	-	0.0%	-	0.0%	-	0.0%	-	0.0%	-	1	1	-		0.0%
Condominium	-	0.0%	-	0.0%	-	0.0%	-	0.0%	-	0.0%	-	-	1	-	-	0.0%
YTD:	-	0.0%	-	0.0%	-	0.0%	-	0.0%	-	0.0%	-	1	1	-		0.0%
<u>Existing Home</u>																
Residential (SF/COND/TH)	2	-60.0%	\$334,000	-47.2%	\$167,000	32.0%	\$167,000	24.2%	\$90	5.5%	50	48	52	6	11.1	89.1%
YTD:	27	22.7%	\$4,628,900	40.3%	\$171,441	14.3%	\$160,000	11.5%	\$92	0.2%	85	86	25	26		91.3%
Single Family	2	-60.0%	\$334,000	-47.2%	\$167,000	32.0%	\$167,000	24.2%	\$90	5.5%	50	48	51	6	10.9	89.1%
YTD:	27	22.7%	\$4,628,900	40.3%	\$171,441	14.3%	\$160,000	11.5%	\$92	0.2%	85	84	24	26		91.3%
Townhouse	-	0.0%	-	0.0%	-	0.0%	-	0.0%	-	0.0%	-	-	-	-	-	0.0%
YTD:	-	0.0%	-	0.0%	-	0.0%	-	0.0%	-	0.0%	-	1	1	-		0.0%
Condominium	-	0.0%	-	0.0%	-	0.0%	-	0.0%	-	0.0%	-	-	1	-	-	0.0%
YTD:	-	0.0%	-	0.0%	-	0.0%	-	0.0%	-	0.0%	-	1	1	-		0.0%
<u>New Construction</u>																
Residential (SF/COND/TH)	-	0.0%	-	0.0%	-	0.0%	-	0.0%	-	0.0%	-	48	45	5	540.0	0.0%
YTD:	1	100.0%	\$575,000	100.0%	\$575,000	100.0%	\$575,000	100.0%	\$236	100.0%	98	51	10	6		92.0%
Single Family	-	0.0%	-	0.0%	-	0.0%	-	0.0%	-	0.0%	-	48	45	5	540.0	0.0%
YTD:	1	100.0%	\$575,000	100.0%	\$575,000	100.0%	\$575,000	100.0%	\$236	100.0%	98	51	10	6		92.0%
Townhouse	-	0.0%	-	0.0%	-	0.0%	-	0.0%	-	0.0%	-	-	-	-	-	0.0%
YTD:	-	0.0%	-	0.0%	-	0.0%	-	0.0%	-	0.0%	-	-	-	-	-	0.0%
Condominium	-	0.0%	-	0.0%	-	0.0%	-	0.0%	-	0.0%	-	-	-	-	-	0.0%
YTD:	-	0.0%	-	0.0%	-	0.0%	-	0.0%	-	0.0%	-	-	-	-	-	0.0%

* Local Market Area Code: 935; Type: Census Place Group
** Closed Sale counts for most recent 3 months are Preliminary.

Market Analysis By Local Market Area*: Smyer

Property Type	Closed Sales**	YoY%	Dollar Volume	YoY%	Average Price	YoY%	Median Price	YoY%	Price/ Sqft	YoY%	DOM	New Listings	Active Listings	Pending Sales	Months Inventory	Close To OLP
<u>All(New and Existing)</u>																
Residential (SF/COND/TH)	-	0.0%	-	0.0%	-	0.0%	-	0.0%	-	0.0%	-	94	86	10	344.0	0.0%
YTD:	3	100.0%	\$913,000	100.0%	\$304,333	100.0%	\$228,000	100.0%	\$148	100.0%	51	100	17	13		98.1%
Single Family	-	0.0%	-	0.0%	-	0.0%	-	0.0%	-	0.0%	-	94	86	10	344.0	0.0%
YTD:	3	100.0%	\$913,000	100.0%	\$304,333	100.0%	\$228,000	100.0%	\$148	100.0%	51	100	17	13		98.1%
Townhouse	-	0.0%	-	0.0%	-	0.0%	-	0.0%	-	0.0%	-	-	-	-	-	0.0%
YTD:	-	0.0%	-	0.0%	-	0.0%	-	0.0%	-	0.0%	-	-	-	-	-	0.0%
Condominium	-	0.0%	-	0.0%	-	0.0%	-	0.0%	-	0.0%	-	-	-	-	-	0.0%
YTD:	-	0.0%	-	0.0%	-	0.0%	-	0.0%	-	0.0%	-	-	-	-	-	0.0%
<u>Existing Home</u>																
Residential (SF/COND/TH)	-	0.0%	-	0.0%	-	0.0%	-	0.0%	-	0.0%	-	46	41	5	246.0	0.0%
YTD:	2	100.0%	\$338,000	100.0%	\$169,000	100.0%	\$169,000	100.0%	\$104	100.0%	28	49	8	7		104.3%
Single Family	-	0.0%	-	0.0%	-	0.0%	-	0.0%	-	0.0%	-	46	41	5	246.0	0.0%
YTD:	2	100.0%	\$338,000	100.0%	\$169,000	100.0%	\$169,000	100.0%	\$104	100.0%	28	49	8	7		104.3%
Townhouse	-	0.0%	-	0.0%	-	0.0%	-	0.0%	-	0.0%	-	-	-	-	-	0.0%
YTD:	-	0.0%	-	0.0%	-	0.0%	-	0.0%	-	0.0%	-	-	-	-	-	0.0%
Condominium	-	0.0%	-	0.0%	-	0.0%	-	0.0%	-	0.0%	-	-	-	-	-	0.0%
YTD:	-	0.0%	-	0.0%	-	0.0%	-	0.0%	-	0.0%	-	-	-	-	-	0.0%
<u>New Construction</u>																
Residential (SF/COND/TH)	-	0.0%	-	0.0%	-	0.0%	-	0.0%	-	0.0%	-	48	45	5	540.0	0.0%
YTD:	1	100.0%	\$575,000	100.0%	\$575,000	100.0%	\$575,000	100.0%	\$236	100.0%	98	51	10	6		92.0%
Single Family	-	0.0%	-	0.0%	-	0.0%	-	0.0%	-	0.0%	-	48	45	5	540.0	0.0%
YTD:	1	100.0%	\$575,000	100.0%	\$575,000	100.0%	\$575,000	100.0%	\$236	100.0%	98	51	10	6		92.0%
Townhouse	-	0.0%	-	0.0%	-	0.0%	-	0.0%	-	0.0%	-	-	-	-	-	0.0%
YTD:	-	0.0%	-	0.0%	-	0.0%	-	0.0%	-	0.0%	-	-	-	-	-	0.0%
Condominium	-	0.0%	-	0.0%	-	0.0%	-	0.0%	-	0.0%	-	-	-	-	-	0.0%
YTD:	-	0.0%	-	0.0%	-	0.0%	-	0.0%	-	0.0%	-	-	-	-	-	0.0%

* Local Market Area Code: 491; Type: Census Place Group
** Closed Sale counts for most recent 3 months are Preliminary.

Market Analysis By Local Market Area*: Sundown

Property Type	Closed Sales**	YoY%	Dollar Volume	YoY%	Average Price	YoY%	Median Price	YoY%	Price/ Sqft	YoY%	DOM	New Listings	Active Listings	Pending Sales	Months Inventory	Close To OLP
<u>All(New and Existing)</u>																
Residential (SF/COND/TH)	1	0.0%	\$189,500	110.6%	\$189,500	110.6%	\$189,500	110.6%	\$91	13.6%	76	94	88	10	132.0	97.2%
YTD:	5	400.0%	\$993,500	1003.9%	\$198,700	120.8%	\$110,000	22.2%	\$97	20.3%	68	101	18	15		84.1%
Single Family	1	0.0%	\$189,500	110.6%	\$189,500	110.6%	\$189,500	110.6%	\$91	13.6%	76	94	88	10	132.0	97.2%
YTD:	5	400.0%	\$993,500	1003.9%	\$198,700	120.8%	\$110,000	22.2%	\$97	20.3%	68	101	18	15		84.1%
Townhouse	-	0.0%	-	0.0%	-	0.0%	-	0.0%	-	0.0%	-	-	-	-	-	0.0%
YTD:	-	0.0%	-	0.0%	-	0.0%	-	0.0%	-	0.0%	-	-	-	-	-	0.0%
Condominium	-	0.0%	-	0.0%	-	0.0%	-	0.0%	-	0.0%	-	-	-	-	-	0.0%
YTD:	-	0.0%	-	0.0%	-	0.0%	-	0.0%	-	0.0%	-	-	-	-	-	0.0%
<u>Existing Home</u>																
Residential (SF/COND/TH)	1	0.0%	\$189,500	110.6%	\$189,500	110.6%	\$189,500	110.6%	\$91	13.6%	76	46	43	5	73.7	97.2%
YTD:	4	300.0%	\$418,500	365.0%	\$104,625	16.3%	\$89,500	-0.6%	\$62	-23.0%	61	50	9	9		82.1%
Single Family	1	0.0%	\$189,500	110.6%	\$189,500	110.6%	\$189,500	110.6%	\$91	13.6%	76	46	43	5	73.7	97.2%
YTD:	4	300.0%	\$418,500	365.0%	\$104,625	16.3%	\$89,500	-0.6%	\$62	-23.0%	61	50	9	9		82.1%
Townhouse	-	0.0%	-	0.0%	-	0.0%	-	0.0%	-	0.0%	-	-	-	-	-	0.0%
YTD:	-	0.0%	-	0.0%	-	0.0%	-	0.0%	-	0.0%	-	-	-	-	-	0.0%
Condominium	-	0.0%	-	0.0%	-	0.0%	-	0.0%	-	0.0%	-	-	-	-	-	0.0%
YTD:	-	0.0%	-	0.0%	-	0.0%	-	0.0%	-	0.0%	-	-	-	-	-	0.0%
<u>New Construction</u>																
Residential (SF/COND/TH)	-	0.0%	-	0.0%	-	0.0%	-	0.0%	-	0.0%	-	48	45	5	540.0	0.0%
YTD:	1	100.0%	\$575,000	100.0%	\$575,000	100.0%	\$575,000	100.0%	\$236	100.0%	98	51	10	6		92.0%
Single Family	-	0.0%	-	0.0%	-	0.0%	-	0.0%	-	0.0%	-	48	45	5	540.0	0.0%
YTD:	1	100.0%	\$575,000	100.0%	\$575,000	100.0%	\$575,000	100.0%	\$236	100.0%	98	51	10	6		92.0%
Townhouse	-	0.0%	-	0.0%	-	0.0%	-	0.0%	-	0.0%	-	-	-	-	-	0.0%
YTD:	-	0.0%	-	0.0%	-	0.0%	-	0.0%	-	0.0%	-	-	-	-	-	0.0%
Condominium	-	0.0%	-	0.0%	-	0.0%	-	0.0%	-	0.0%	-	-	-	-	-	0.0%
YTD:	-	0.0%	-	0.0%	-	0.0%	-	0.0%	-	0.0%	-	-	-	-	-	0.0%

* Local Market Area Code: 223; Type: Census Place Group

** Closed Sale counts for most recent 3 months are Preliminary.

Market Analysis By Local Market Area*: Wolfforth

Property Type	Closed Sales**		YoY%	Dollar Volume	YoY%	Average Price	YoY%	Median Price	YoY%	Price/ Sqft	YoY%	DOM	New Listings	Active Listings	Pending Sales	Months Inventory	Close To OLP
<u>All(New and Existing)</u>																	
Residential (SF/COND/TH)	9	-67.9%		\$2,609,900	-73.1%	\$289,989	-16.2%	\$303,000	-15.8%	\$143	-9.0%	66	96	116	22	7.5	93.9%
YTD:	86	-29.5%		\$26,686,106	-31.7%	\$310,304	-3.2%	\$304,925	1.7%	\$152	0.6%	56	225	54	100		96.9%
Single Family	9	-67.9%		\$2,609,900	-73.1%	\$289,989	-16.2%	\$303,000	-15.8%	\$143	-9.0%	66	96	116	21	7.6	93.9%
YTD:	86	-29.5%		\$26,686,106	-31.7%	\$310,304	-3.2%	\$304,925	1.7%	\$152	0.6%	56	224	54	99		96.9%
Townhouse	-	0.0%		-	0.0%	-	0.0%	-	0.0%	-	0.0%	-	-	-	1	-	0.0%
YTD:	-	0.0%		-	0.0%	-	0.0%	-	0.0%	-	0.0%	-	1	1	1		0.0%
Condominium	-	0.0%		-	0.0%	-	0.0%	-	0.0%	-	0.0%	-	-	-	-	-	0.0%
YTD:	-	0.0%		-	0.0%	-	0.0%	-	0.0%	-	0.0%	-	-	-	-		0.0%
<u>Existing Home</u>																	
Residential (SF/COND/TH)	8	-52.9%		\$2,248,000	-58.8%	\$281,000	-12.5%	\$294,000	-14.8%	\$138	-5.8%	56	46	62	16	6.5	91.9%
YTD:	59	-1.7%		\$17,994,150	0.5%	\$304,986	2.2%	\$310,000	9.2%	\$149	5.9%	55	149	33	70		96.3%
Single Family	8	-52.9%		\$2,248,000	-58.8%	\$281,000	-12.5%	\$294,000	-14.8%	\$138	-5.8%	56	46	62	15	6.5	91.9%
YTD:	59	-1.7%		\$17,994,150	0.5%	\$304,986	2.2%	\$310,000	9.2%	\$149	5.9%	55	148	33	69		96.3%
Townhouse	-	0.0%		-	0.0%	-	0.0%	-	0.0%	-	0.0%	-	-	-	1	-	0.0%
YTD:	-	0.0%		-	0.0%	-	0.0%	-	0.0%	-	0.0%	-	1	1	1		0.0%
Condominium	-	0.0%		-	0.0%	-	0.0%	-	0.0%	-	0.0%	-	-	-	-	-	0.0%
YTD:	-	0.0%		-	0.0%	-	0.0%	-	0.0%	-	0.0%	-	-	-	-		0.0%
<u>New Construction</u>																	
Residential (SF/COND/TH)	1	-90.9%		\$361,900	-91.5%	\$361,900	-6.0%	\$361,900	0.5%	\$183	5.2%	153	50	54	6	9.3	100.0%
YTD:	27	-56.5%		\$8,691,956	-59.0%	\$321,924	-5.8%	\$303,250	-6.6%	\$161	-1.0%	59	76	21	30		97.9%
Single Family	1	-90.9%		\$361,900	-91.5%	\$361,900	-6.0%	\$361,900	0.5%	\$183	5.2%	153	50	54	6	9.3	100.0%
YTD:	27	-56.5%		\$8,691,956	-59.0%	\$321,924	-5.8%	\$303,250	-6.6%	\$161	-1.0%	59	76	21	30		97.9%
Townhouse	-	0.0%		-	0.0%	-	0.0%	-	0.0%	-	0.0%	-	-	-	-	-	0.0%
YTD:	-	0.0%		-	0.0%	-	0.0%	-	0.0%	-	0.0%	-	-	-	-		0.0%
Condominium	-	0.0%		-	0.0%	-	0.0%	-	0.0%	-	0.0%	-	-	-	-	-	0.0%
YTD:	-	0.0%		-	0.0%	-	0.0%	-	0.0%	-	0.0%	-	-	-	-		0.0%

* Local Market Area Code: 1096; Type: Census Place Group

** Closed Sale counts for most recent 3 months are Preliminary.

