

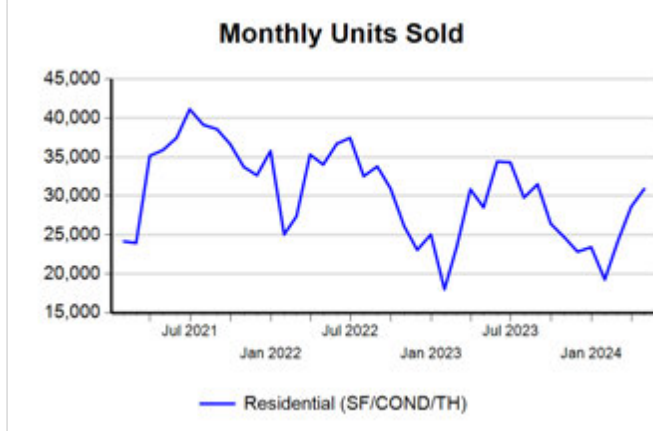
Market Analysis By State: Texas

Property Type	Closed Sales*	YoY%	Dollar Volume	YoY%	Average Price	YoY%	Median Price	YoY%	Price/Sqft	YoY%	DOM	New Listings	Active Listings	Pending Sales	Months Inventory	Close To OLP
<b>All(New and Existing)</b>																
Residential (SF/COND/TH)	30,918	8.4%	\$13,378,287,937	13.1%	\$432,702	4.4%	\$341,900	1.5%	\$196	3.3%	57	52,575	110,344	32,507	4.0	95.7%
YTD:	102,884	1.9%	\$42,504,426,476	5.3%	\$413,130	3.4%	\$335,000	1.5%	\$190	2.8%	63	185,103	101,399	118,036		94.9%
Single Family	29,038	8.6%	\$12,681,770,572	13.4%	\$436,730	4.4%	\$345,000	1.8%	\$193	3.3%	57	48,803	101,350	30,592	3.9	95.7%
YTD:	96,942	2.3%	\$40,410,672,140	5.7%	\$416,854	3.3%	\$336,000	1.8%	\$188	2.9%	63	171,345	93,441	111,237		94.9%
Townhouse	808	-1.7%	\$302,883,302	1.7%	\$374,856	3.5%	\$342,375	0.8%	\$201	2.4%	56	1,548	3,087	920	4.3	96.0%
YTD:	2,691	-2.6%	\$966,899,033	0.3%	\$359,308	3.0%	\$328,000	-0.2%	\$196	2.2%	57	5,564	2,808	3,172		95.7%
Condominium	1,041	5.7%	\$382,824,882	9.4%	\$367,747	3.6%	\$270,500	2.1%	\$278	2.7%	59	2,224	5,907	995	6.5	94.3%
YTD:	3,201	-8.3%	\$1,109,354,268	-6.2%	\$346,565	2.3%	\$260,000	4.0%	\$266	3.0%	62	8,194	5,149	3,627		93.8%
<b>Existing Home</b>																
Residential (SF/COND/TH)	23,495	9.2%	\$10,182,251,893	16.5%	\$433,380	6.7%	\$335,000	4.1%	\$197	4.4%	50	41,228	81,315	23,796	4.0	95.6%
YTD:	75,431	0.6%	\$31,032,548,579	6.6%	\$411,403	5.9%	\$325,000	3.2%	\$190	4.3%	56	141,241	72,499	85,220		94.8%
Single Family	21,860	9.4%	\$9,589,184,538	16.9%	\$438,664	6.8%	\$340,000	4.6%	\$193	4.5%	49	37,970	73,859	22,179	3.9	95.7%
YTD:	70,327	1.0%	\$29,291,285,033	7.1%	\$416,501	6.0%	\$329,000	4.4%	\$187	4.5%	56	129,606	66,029	79,483		94.8%
Townhouse	618	2.3%	\$228,320,671	6.6%	\$369,451	4.2%	\$324,000	-1.8%	\$197	3.2%	45	1,191	2,155	674	4.0	96.2%
YTD:	2,024	-2.9%	\$705,573,068	1.2%	\$348,603	4.3%	\$308,000	1.7%	\$190	3.6%	47	4,102	1,896	2,310		95.8%
Condominium	991	6.7%	\$355,809,370	11.1%	\$359,041	4.2%	\$260,000	2.0%	\$274	3.5%	57	2,067	5,301	943	6.2	94.3%
YTD:	3,032	-7.4%	\$1,018,929,647	-4.4%	\$336,059	3.2%	\$250,000	4.2%	\$263	3.8%	61	7,533	4,573	3,427		93.8%
<b>New Construction</b>																
Residential (SF/COND/TH)	7,415	5.5%	\$3,192,471,183	3.3%	\$430,542	-2.1%	\$355,150	-5.3%	\$194	-0.2%	79	11,347	29,029	8,711	4.1	95.8%
YTD:	27,425	5.4%	\$11,460,354,335	1.9%	\$417,880	-3.3%	\$350,662	-4.0%	\$190	-1.4%	80	43,862	28,899	32,816		95.1%
Single Family	7,171	6.2%	\$3,089,250,510	3.8%	\$430,798	-2.3%	\$354,994	-5.2%	\$192	0.0%	79	10,833	27,491	8,413	4.0	95.8%
YTD:	26,586	5.8%	\$11,107,312,244	2.3%	\$417,788	-3.3%	\$350,000	-4.1%	\$188	-1.2%	80	41,739	27,411	31,754		95.1%
Townhouse	190	-12.8%	\$74,558,541	-10.8%	\$392,413	2.4%	\$375,000	4.2%	\$217	1.6%	92	357	932	246	5.2	95.6%
YTD:	664	-2.2%	\$260,207,493	-2.4%	\$391,879	-0.2%	\$369,584	-2.7%	\$212	-1.4%	88	1,462	912	862		95.1%
Condominium	49	-12.5%	\$26,534,217	-10.4%	\$541,515	2.4%	\$438,950	-12.2%	\$352	-4.1%	85	157	606	52	10.6	95.2%
YTD:	168	-22.9%	\$89,846,037	-22.9%	\$534,798	0.1%	\$463,565	-3.4%	\$330	-3.4%	87	661	575	200		93.9%

\* Closed Sale counts for most recent 3 months are Preliminary.

Trend Analysis By State: Texas

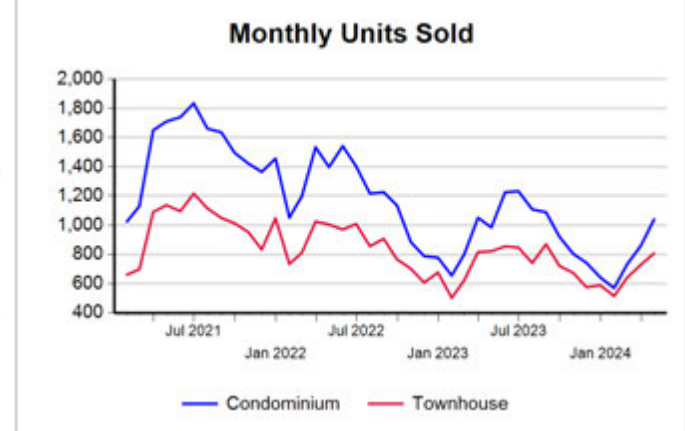
Residential, All (New and Existing)



Single Family, New vs. Existing



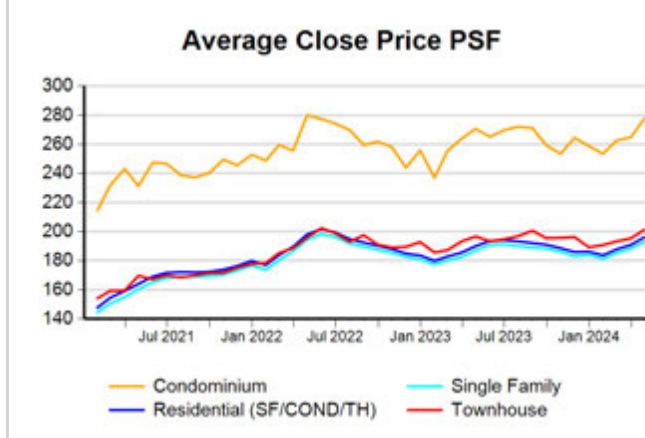
COND/TH, All (New and Existing)



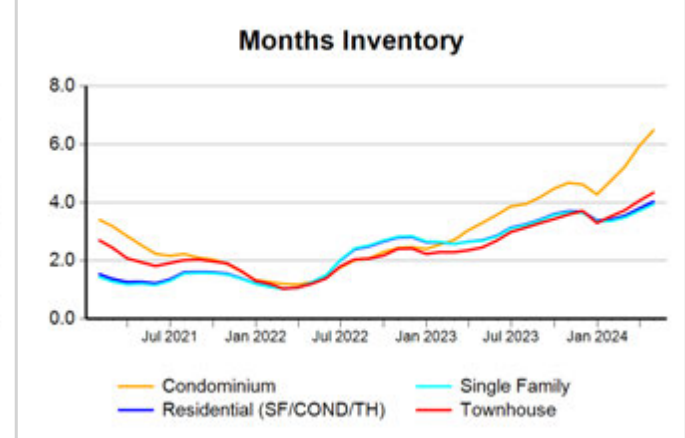
All (New and Existing) Construction



All (New and Existing) Construction



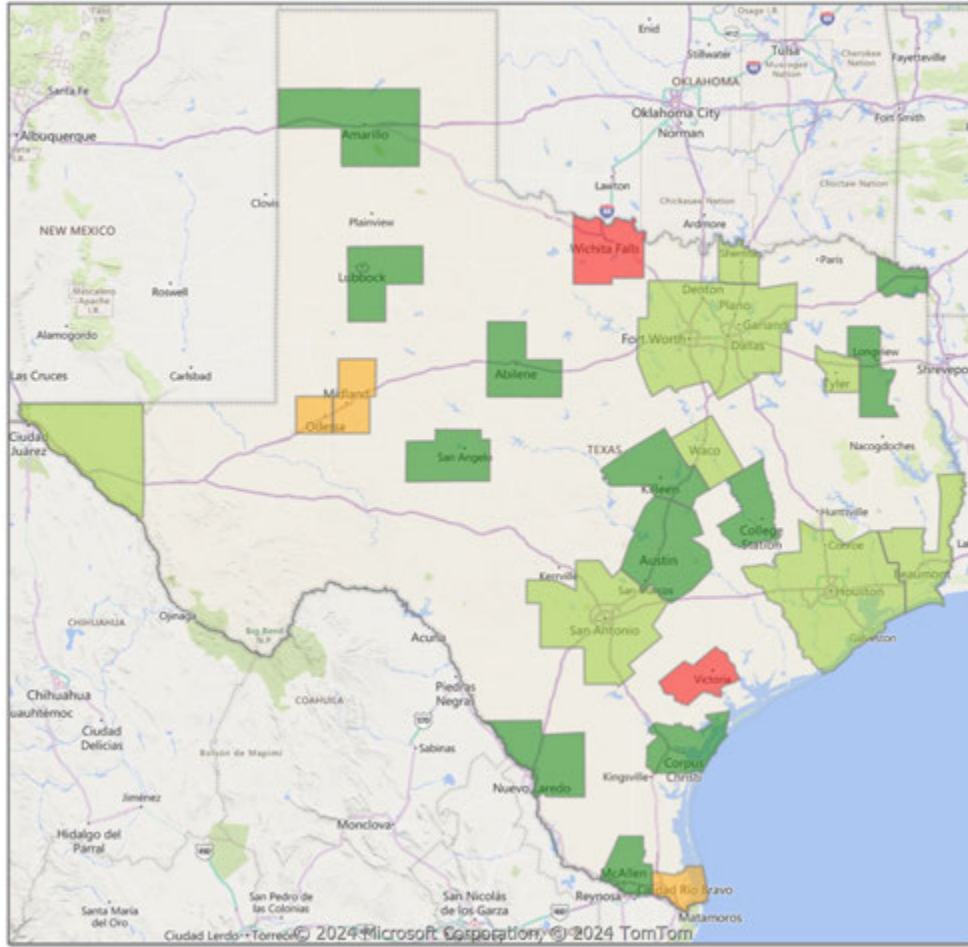
All (New and Existing) Construction



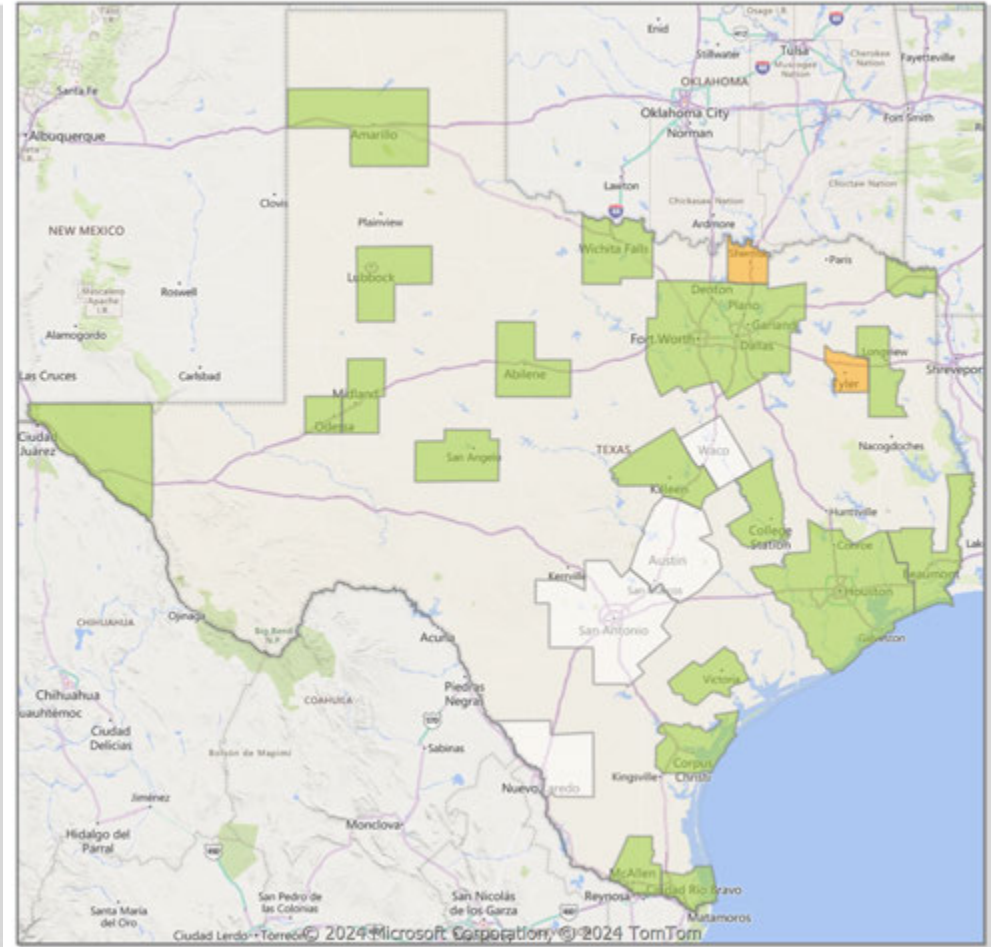
\* Closed Sale counts for most recent 3 months are Preliminary.

**Comparison By Metropolitan Statistical Area in Texas**

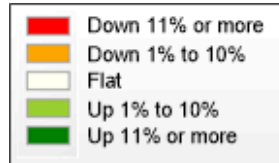
**Residential\* Closed Sales  
YoY Percentage Change**



**Residential\* Avg Close Price Per SqFt  
YoY Percentage Change**

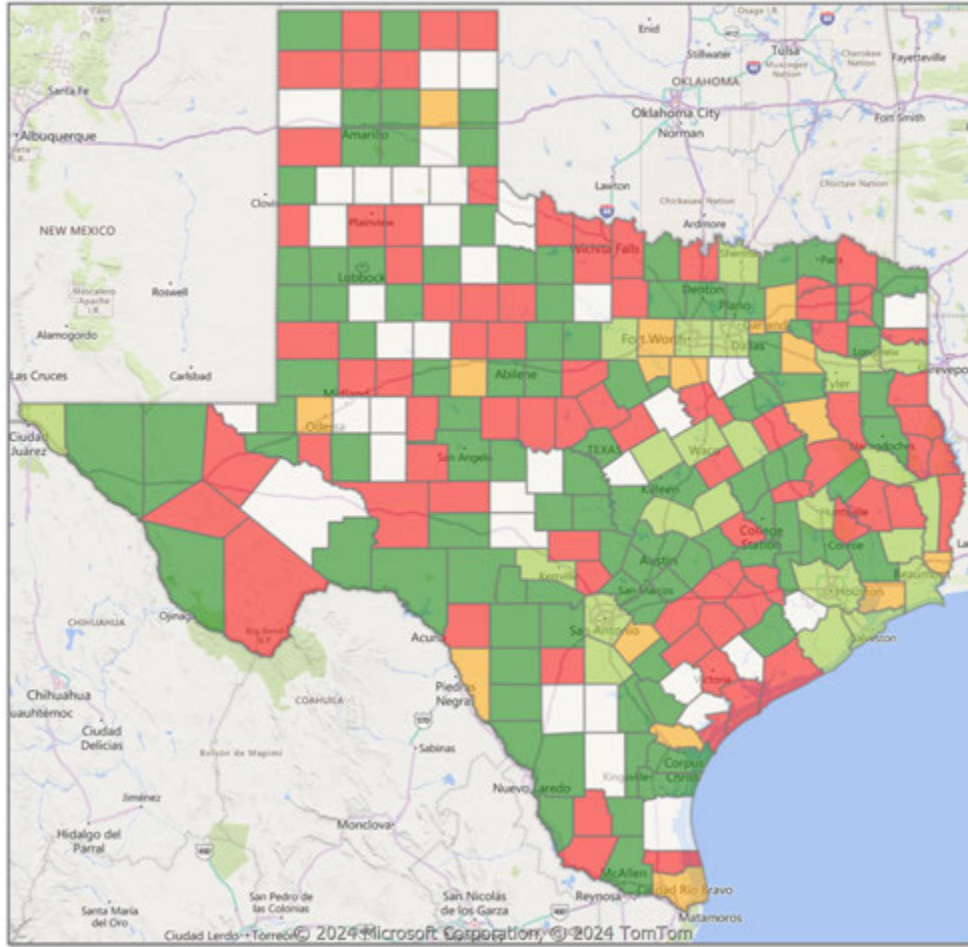


\* Residential includes Single Family, Condominium and Townhouse.

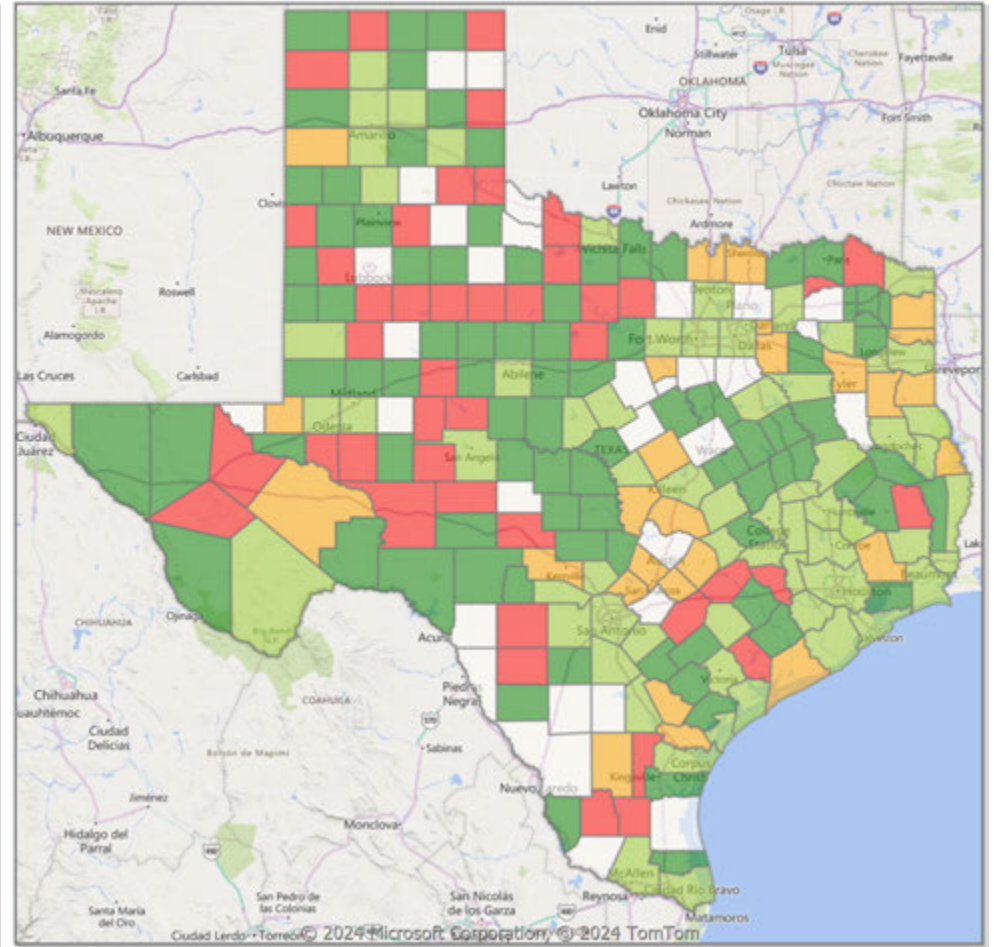


**Comparison By County in Texas**

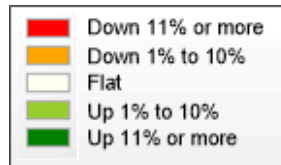
**Residential\* Closed Sales  
YoY Percentage Change**



**Residential\* Avg Close Price Per SqFt  
YoY Percentage Change**



\* Residential includes Single Family, Condominium and Townhouse.



Market Analysis By Metropolitan Statistical Area: Lubbock

Property Type	Closed Sales*	YoY%	Dollar Volume	YoY%	Average Price	YoY%	Median Price	YoY%	Price/Sqft	YoY%	DOM	New Listings	Active Listings	Pending Sales	Months Inventory	Close To OLP
<b>All(New and Existing)</b>																
Residential (SF/COND/TH)	466	22.3%	\$128,156,202	22.2%	\$275,013	-0.1%	\$234,763	-2.6%	\$136	1.3%	47	917	1,499	514	3.8	96.0%
YTD:	1,469	7.1%	\$411,577,572	8.7%	\$280,175	1.5%	\$235,000	-2.0%	\$137	1.5%	51	3,249	1,392	1,793		95.9%
Single Family	448	18.8%	\$120,884,849	16.2%	\$269,832	-2.3%	\$235,000	-2.9%	\$136	1.0%	46	858	1,416	489	3.7	96.1%
YTD:	1,421	5.9%	\$398,685,070	7.3%	\$280,567	1.4%	\$238,000	-0.8%	\$137	1.4%	49	3,113	1,320	1,726		96.0%
Townhouse	12	200.0%	\$2,454,900	198.5%	\$204,575	-0.5%	\$201,000	13.2%	\$141	8.5%	112	53	74	20	8.0	93.2%
YTD:	36	56.5%	\$7,162,650	49.7%	\$198,963	-4.4%	\$189,500	-7.6%	\$137	4.7%	110	115	62	55		93.2%
Condominium	5	100.0%	\$4,443,000	100.0%	\$888,600	100.0%	\$1,100,000	100.0%	\$154	100.0%	40	6	9	5	4.5	96.1%
YTD:	10	42.9%	\$5,178,500	129.4%	\$517,850	60.6%	\$222,000	3.3%	\$145	8.2%	34	21	9	12		95.0%

\* Closed Sale counts for most recent 3 months are Preliminary.

<b>Existing Home</b>																
Residential (SF/COND/TH)	338	14.2%	\$90,994,345	20.9%	\$269,214	5.8%	\$221,250	0.8%	\$128	1.7%	42	742	1,160	401	3.9	95.3%
YTD:	1,055	-1.1%	\$284,856,265	3.8%	\$270,006	5.0%	\$224,000	3.9%	\$128	1.3%	47	2,477	1,022	1,322		95.1%
Single Family	329	12.3%	\$85,620,263	14.7%	\$260,244	2.1%	\$220,000	0.0%	\$128	1.3%	41	695	1,099	390	3.8	95.4%
YTD:	1,034	-0.6%	\$277,315,755	3.5%	\$268,197	4.1%	\$224,500	3.9%	\$128	1.2%	47	2,378	980	1,290		95.2%
Townhouse	4	33.3%	\$805,500	30.5%	\$201,375	-2.1%	\$155,250	3.5%	\$135	6.9%	53	41	52	6	16.0	90.0%
YTD:	11	-45.0%	\$2,329,450	-44.3%	\$211,768	1.4%	\$185,000	-10.8%	\$132	2.4%	37	78	34	20		92.9%
Condominium	5	100.0%	\$4,443,000	100.0%	\$888,600	100.0%	\$1,100,000	100.0%	\$154	100.0%	40	6	9	5	4.5	96.1%
YTD:	10	42.9%	\$5,178,500	129.4%	\$517,850	60.6%	\$222,000	3.3%	\$145	8.2%	34	21	8	12		95.0%

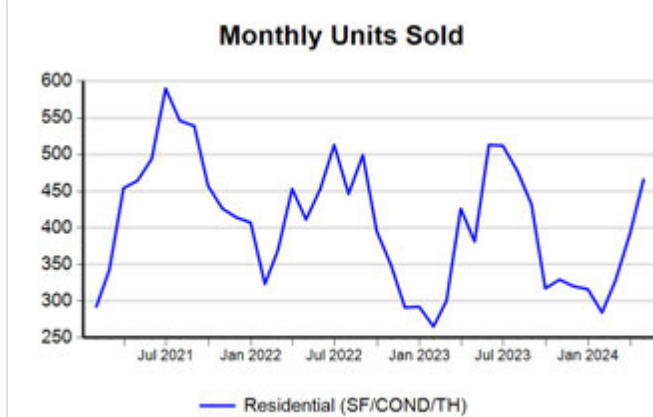
\* Closed Sale counts for most recent 3 months are Preliminary.

<b>New Construction</b>																
Residential (SF/COND/TH)	127	49.4%	\$36,882,661	24.6%	\$290,415	-16.6%	\$245,995	-22.6%	\$157	-3.9%	63	175	339	113	3.6	97.8%
YTD:	413	35.4%	\$126,413,547	21.5%	\$306,086	-10.3%	\$254,990	-15.0%	\$158	-3.0%	61	772	369	471		97.8%
Single Family	119	41.7%	\$35,262,819	19.9%	\$296,326	-15.3%	\$248,000	-22.8%	\$158	-3.5%	58	163	317	99	3.6	98.0%
YTD:	388	28.5%	\$121,624,624	17.6%	\$313,466	-8.5%	\$262,553	-12.5%	\$160	-2.4%	56	735	340	436		98.1%
Townhouse	8	700.0%	\$1,649,400	704.6%	\$206,175	0.6%	\$209,450	2.2%	\$144	1.8%	141	12	22	14	3.7	94.6%
YTD:	25	733.3%	\$4,833,200	698.2%	\$193,328	-4.2%	\$190,000	-7.3%	\$139	-3.4%	142	37	28	35		93.4%
Condominium	-	0.0%	-	0.0%	-	0.0%	-	0.0%	-	0.0%	-	-	0	0	-	0.0%
YTD:	-	0.0%	-	0.0%	-	0.0%	-	0.0%	-	0.0%	-	0	1	0		0.0%

\* Closed Sale counts for most recent 3 months are Preliminary.

Trend Analysis By Metropolitan Statistical Area: Lubbock

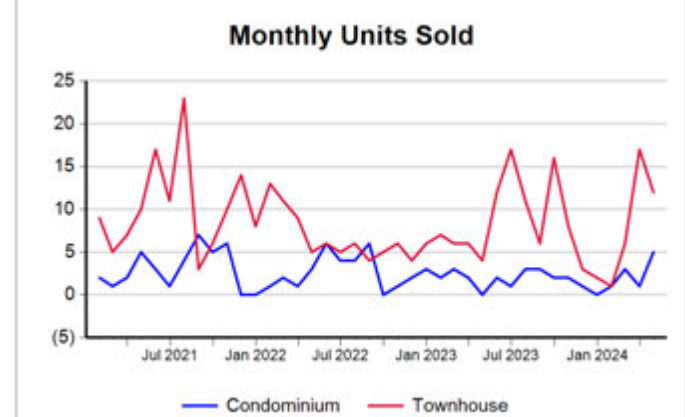
Residential, All (New and Existing)



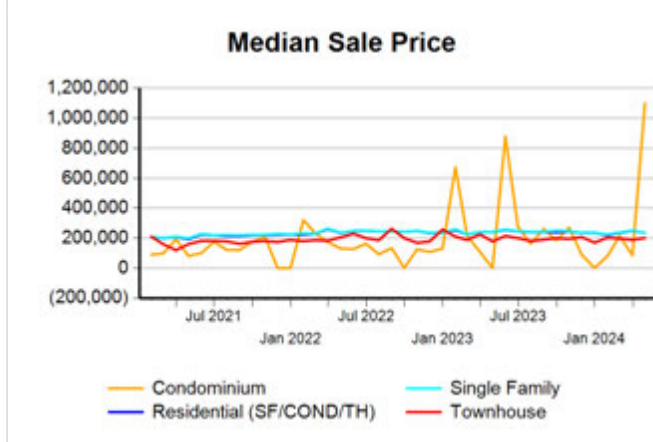
Single Family, New vs. Existing



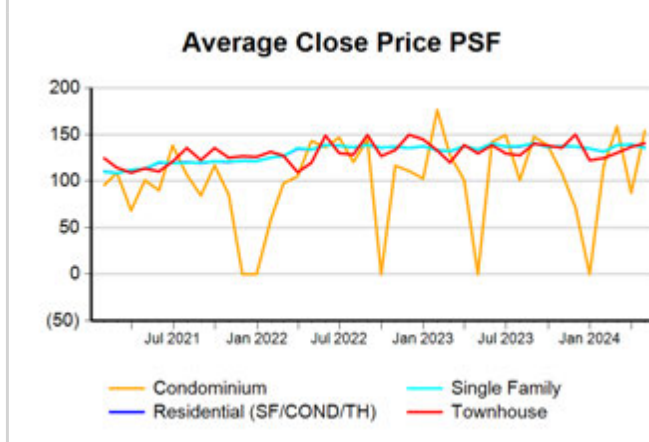
COND/TH, All (New and Existing)



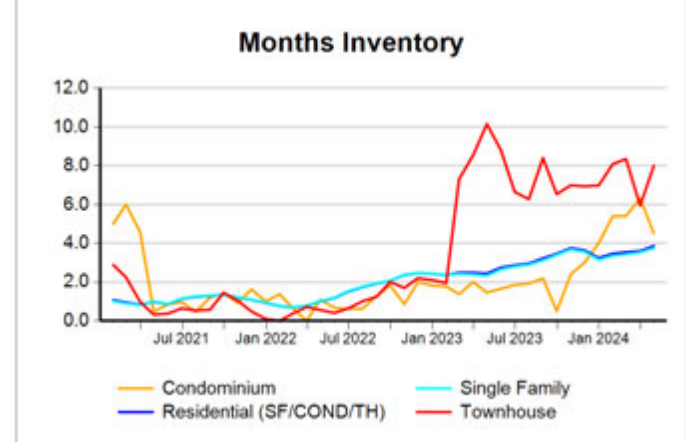
All (New and Existing) Construction



All (New and Existing) Construction



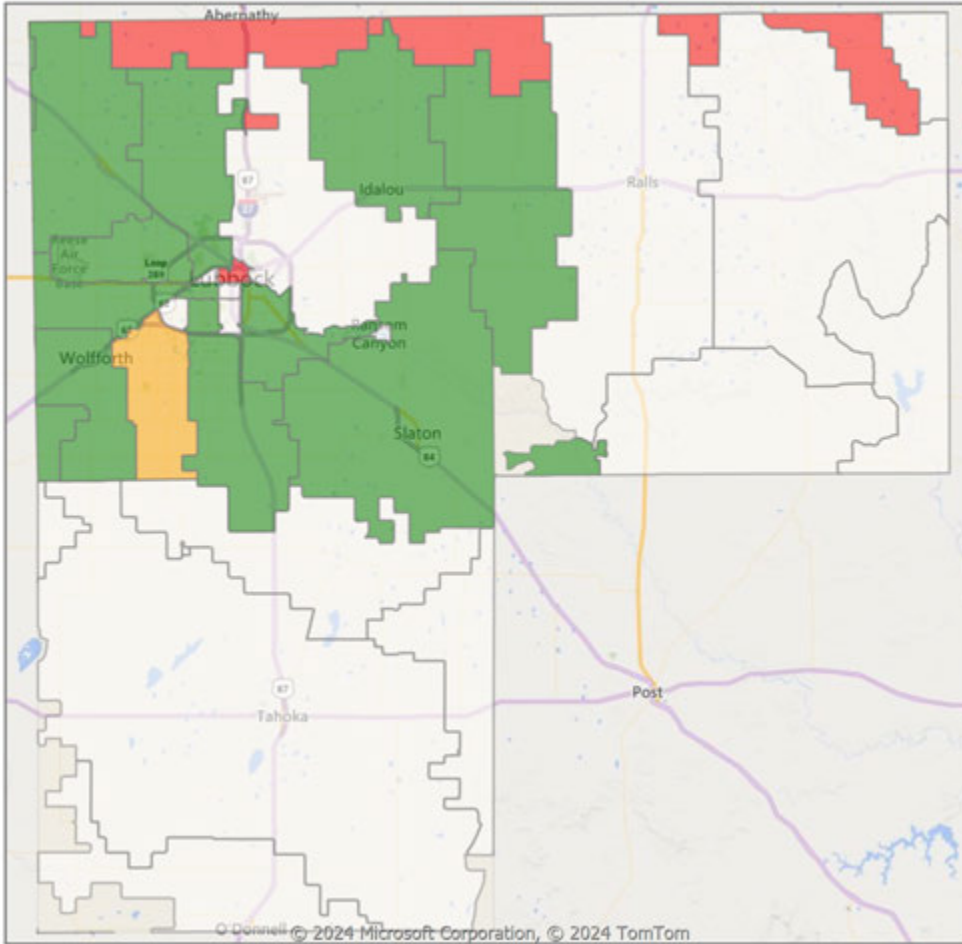
All (New and Existing) Construction



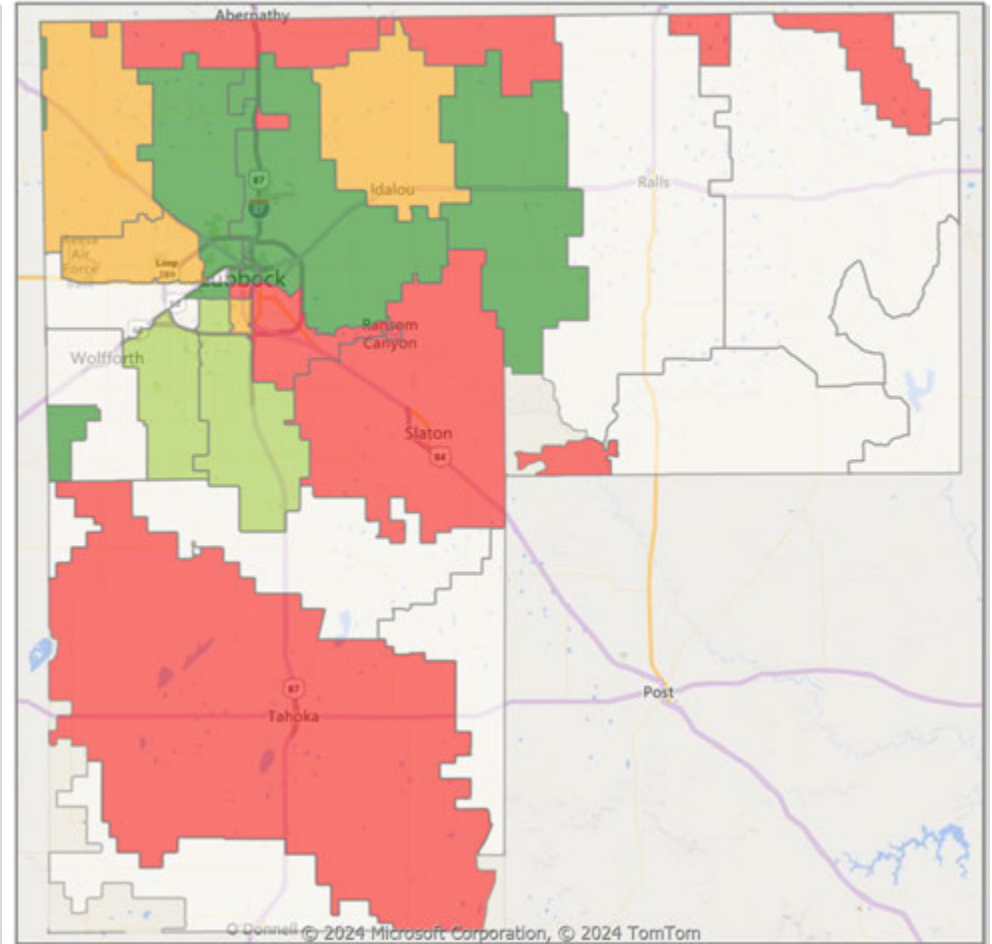
\* Closed Sale counts for most recent 3 months are Preliminary.

**Comparison By Zip Code\* in Lubbock MSA**

**Residential\*\* Closed Sales  
YoY Percentage Change**

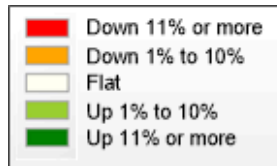


**Residential\*\* Avg Close Price Per SqFt  
YoY Percentage Change**



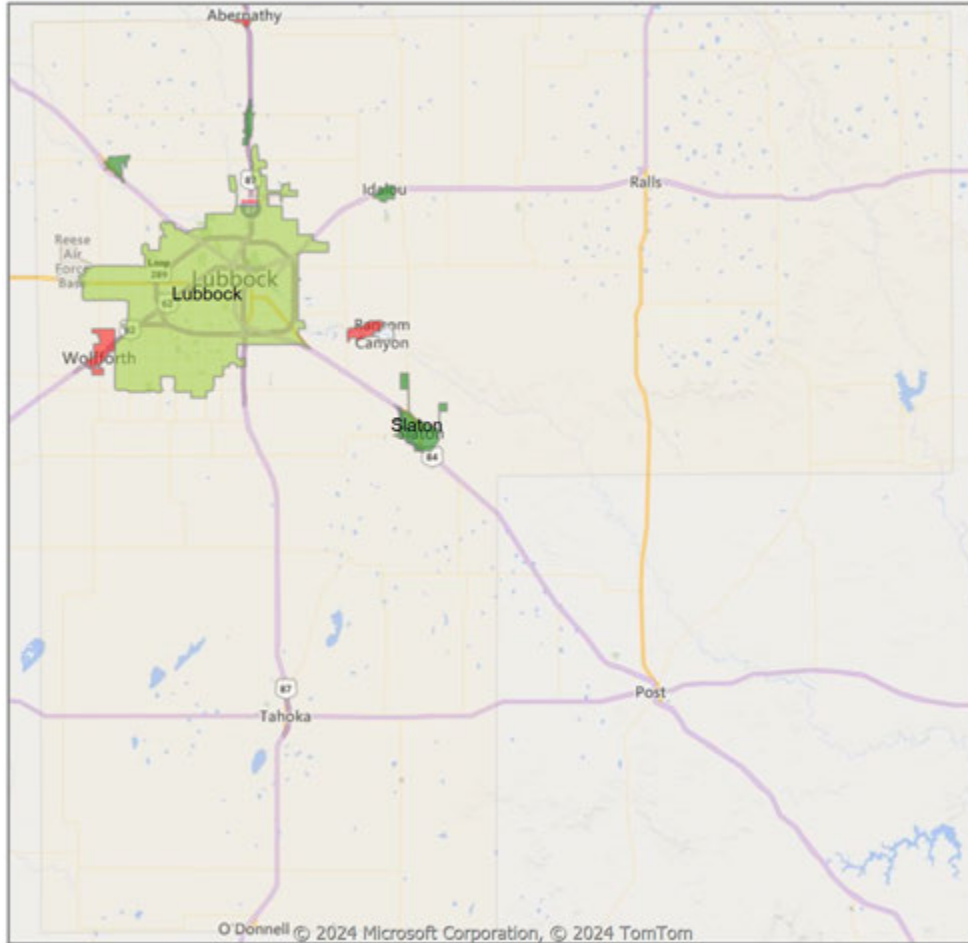
\* US Census Zip Code Tabulation Area

\*\* Residential includes Single Family, Condominium and Townhouse.

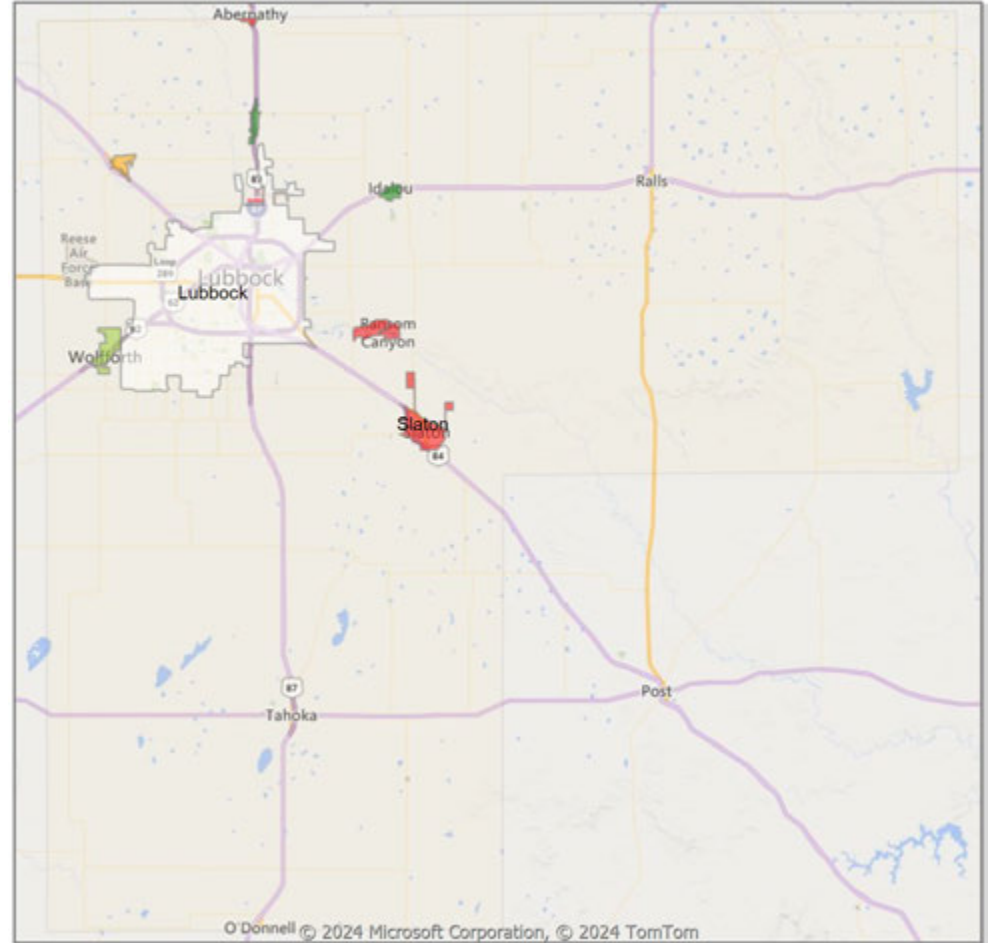


**Comparison By Local Market Area\* in Lubbock MSA**

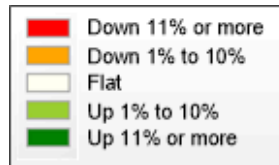
**Residential\*\* Closed Sales  
YoY Percentage Change**



**Residential\*\* Avg Close Price Per SqFt  
YoY Percentage Change**



\* Census Place Group  
\*\* Residential includes Single Family, Condominium and Townhouse.





Market Analysis By County: Hockley County

Property Type	Closed Sales*	YoY%	Dollar Volume	YoY%	Average Price	YoY%	Median Price	YoY%	Price/Sqft	YoY%	DOM	New Listings	Active Listings	Pending Sales	Months Inventory	Close To OLP
<b>All(New and Existing)</b>																
Residential (SF/COND/TH)	25	108.3%	\$5,362,179	80.3%	\$214,487	-13.5%	\$195,000	-11.2%	\$97	-18.4%	62	29	69	21	4.0	91.2%
YTD:	77	48.1%	\$16,033,575	37.9%	\$208,228	-6.9%	\$185,000	-6.9%	\$102	-1.3%	70	120	72	91		92.8%
Single Family	25	108.3%	\$5,362,179	80.3%	\$214,487	-13.5%	\$195,000	-11.2%	\$97	-18.4%	62	29	68	21	4.0	91.2%
YTD:	77	48.1%	\$16,033,575	37.9%	\$208,228	-6.9%	\$185,000	-6.9%	\$102	-1.3%	70	120	71	91		92.8%
Townhouse	-	0.0%	-	0.0%	-	0.0%	-	0.0%	-	0.0%	-	-	-	-	-	0.0%
YTD:	-	0.0%	-	0.0%	-	0.0%	-	0.0%	-	0.0%	-	-	-	-	-	0.0%
Condominium	-	0.0%	-	0.0%	-	0.0%	-	0.0%	-	0.0%	-	-	1	-	-	0.0%
YTD:	-	0.0%	-	0.0%	-	0.0%	-	0.0%	-	0.0%	-	-	1	-	-	0.0%
<b>Existing Home</b>																
Residential (SF/COND/TH)	24	100.0%	\$5,184,599	74.3%	\$216,025	-12.9%	\$207,250	-5.6%	\$95	-20.0%	65	19	57	18	3.5	91.1%
YTD:	70	37.3%	\$14,426,035	25.7%	\$206,086	-8.4%	\$185,000	-10.8%	\$98	-5.3%	71	103	65	81		92.3%
Single Family	24	100.0%	\$5,184,599	74.3%	\$216,025	-12.9%	\$207,250	-5.6%	\$95	-20.0%	65	19	56	18	3.5	91.1%
YTD:	70	37.3%	\$14,426,035	25.7%	\$206,086	-8.4%	\$185,000	-10.8%	\$98	-5.3%	71	103	64	81		92.3%
Townhouse	-	0.0%	-	0.0%	-	0.0%	-	0.0%	-	0.0%	-	-	-	-	-	0.0%
YTD:	-	0.0%	-	0.0%	-	0.0%	-	0.0%	-	0.0%	-	-	-	-	-	0.0%
Condominium	-	0.0%	-	0.0%	-	0.0%	-	0.0%	-	0.0%	-	-	1	-	-	0.0%
YTD:	-	0.0%	-	0.0%	-	0.0%	-	0.0%	-	0.0%	-	-	1	-	-	0.0%
<b>New Construction</b>																
Residential (SF/COND/TH)	1	100.0%	\$177,580	100.0%	\$177,580	100.0%	\$177,580	100.0%	\$144	100.0%	3	10	12	3	12.0	94.7%
YTD:	7	600.0%	\$1,607,540	978.9%	\$229,649	54.1%	\$222,000	49.0%	\$143	44.0%	58	17	7	10		97.8%
Single Family	1	100.0%	\$177,580	100.0%	\$177,580	100.0%	\$177,580	100.0%	\$144	100.0%	3	10	12	3	12.0	94.7%
YTD:	7	600.0%	\$1,607,540	978.9%	\$229,649	54.1%	\$222,000	49.0%	\$143	44.0%	58	17	7	10		97.8%
Townhouse	-	0.0%	-	0.0%	-	0.0%	-	0.0%	-	0.0%	-	-	-	-	-	0.0%
YTD:	-	0.0%	-	0.0%	-	0.0%	-	0.0%	-	0.0%	-	-	-	-	-	0.0%
Condominium	-	0.0%	-	0.0%	-	0.0%	-	0.0%	-	0.0%	-	-	-	-	-	0.0%
YTD:	-	0.0%	-	0.0%	-	0.0%	-	0.0%	-	0.0%	-	-	-	-	-	0.0%

\* Closed Sale counts for most recent 3 months are Preliminary.

Market Analysis By County: Lubbock County

Property Type	Closed Sales*	YoY%	Dollar Volume	YoY%	Average Price	YoY%	Median Price	YoY%	Price/Sqft	YoY%	DOM	New Listings	Active Listings	Pending Sales	Months Inventory	Close To OLP
<b>All(New and Existing)</b>																
Residential (SF/COND/TH)	460	24.3%	\$127,160,139	23.3%	\$276,435	-0.9%	\$234,995	-4.1%	\$137	0.4%	47	896	1,450	498	3.8	96.0%
YTD:	1,443	7.4%	\$403,367,743	7.8%	\$279,534	0.4%	\$235,000	-2.1%	\$137	0.8%	51	3,170	1,342	1,756		95.9%
Single Family	442	20.8%	\$119,887,053	17.2%	\$271,238	-3.0%	\$235,000	-4.5%	\$136	0.1%	46	837	1,367	473	3.7	96.1%
YTD:	1,395	6.1%	\$390,476,199	6.4%	\$279,911	0.3%	\$238,031	-0.8%	\$137	0.7%	49	3,034	1,270	1,689		96.0%
Townhouse	12	200.0%	\$2,454,900	198.5%	\$204,575	-0.5%	\$201,000	13.2%	\$141	8.5%	112	53	74	20	8.0	93.2%
YTD:	36	56.5%	\$7,162,650	49.7%	\$198,963	-4.4%	\$189,500	-7.6%	\$137	4.7%	110	115	62	55		93.2%
Condominium	5	100.0%	\$4,443,000	100.0%	\$888,600	100.0%	\$1,100,000	100.0%	\$154	100.0%	40	6	9	5	4.5	96.1%
YTD:	10	66.7%	\$5,178,500	149.9%	\$517,850	50.0%	\$222,000	2.1%	\$145	-1.9%	34	21	9	12		95.0%
<b>Existing Home</b>																
Residential (SF/COND/TH)	332	16.5%	\$89,995,855	22.4%	\$271,072	5.0%	\$223,250	1.5%	\$129	0.7%	41	722	1,119	385	3.9	95.4%
YTD:	1,033	-0.7%	\$278,714,757	3.1%	\$269,811	3.8%	\$225,000	2.5%	\$129	0.5%	47	2,406	982	1,287		95.2%
Single Family	323	14.5%	\$84,620,093	16.0%	\$261,982	1.3%	\$222,500	1.1%	\$128	0.3%	41	675	1,058	374	3.7	95.4%
YTD:	1,012	-0.2%	\$271,173,452	2.7%	\$267,958	2.9%	\$225,000	2.3%	\$129	0.5%	47	2,307	940	1,255		95.2%
Townhouse	4	33.3%	\$805,500	30.5%	\$201,375	-2.1%	\$155,250	3.5%	\$135	6.9%	53	41	52	6	16.0	90.0%
YTD:	11	-45.0%	\$2,329,450	-44.3%	\$211,768	1.4%	\$185,000	-10.8%	\$132	2.4%	37	78	34	20		92.9%
Condominium	5	100.0%	\$4,443,000	100.0%	\$888,600	100.0%	\$1,100,000	100.0%	\$154	100.0%	40	6	9	5	4.5	96.1%
YTD:	10	66.7%	\$5,178,500	149.9%	\$517,850	50.0%	\$222,000	2.1%	\$145	-1.9%	34	21	8	12		95.0%
<b>New Construction</b>																
Residential (SF/COND/TH)	127	49.4%	\$36,882,661	24.6%	\$290,415	-16.6%	\$245,995	-22.6%	\$157	-3.9%	63	174	331	113	3.6	97.8%
YTD:	409	34.5%	\$124,345,368	20.0%	\$304,023	-10.8%	\$253,000	-15.7%	\$158	-3.2%	61	764	359	469		97.8%
Single Family	119	41.7%	\$35,262,819	19.9%	\$296,326	-15.3%	\$248,000	-22.8%	\$158	-3.5%	58	162	309	99	3.6	98.0%
YTD:	384	27.6%	\$119,556,095	16.0%	\$311,344	-9.0%	\$261,643	-12.8%	\$159	-2.5%	55	727	330	434		98.1%
Townhouse	8	700.0%	\$1,649,400	704.6%	\$206,175	0.6%	\$209,450	2.2%	\$144	1.8%	141	12	22	14	3.7	94.6%
YTD:	25	733.3%	\$4,833,200	698.2%	\$193,328	-4.2%	\$190,000	-7.3%	\$139	-3.4%	142	37	28	35		93.4%
Condominium	-	0.0%	-	0.0%	-	0.0%	-	0.0%	-	0.0%	-	-	-	-	-	0.0%
YTD:	-	0.0%	-	0.0%	-	0.0%	-	0.0%	-	0.0%	-	-	1	-		0.0%

\* Closed Sale counts for most recent 3 months are Preliminary.

Trend Analysis By County: Hockley County

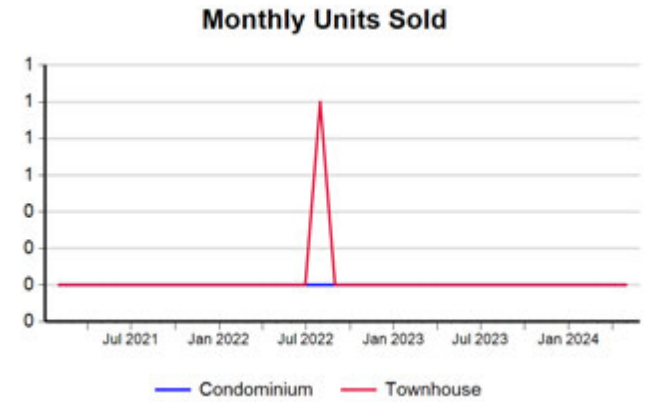
Residential, All (New and Existing)



Single Family, New vs. Existing



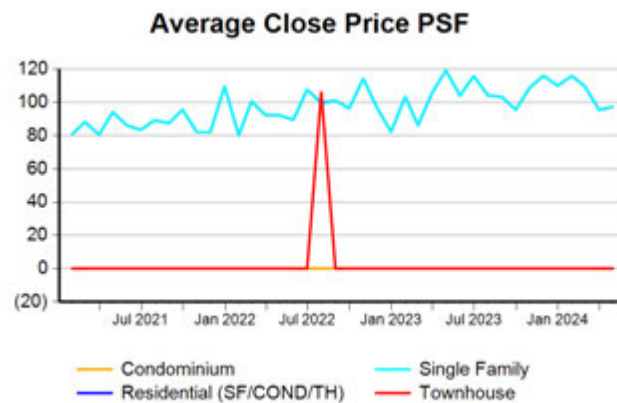
COND/TH, All (New and Existing)



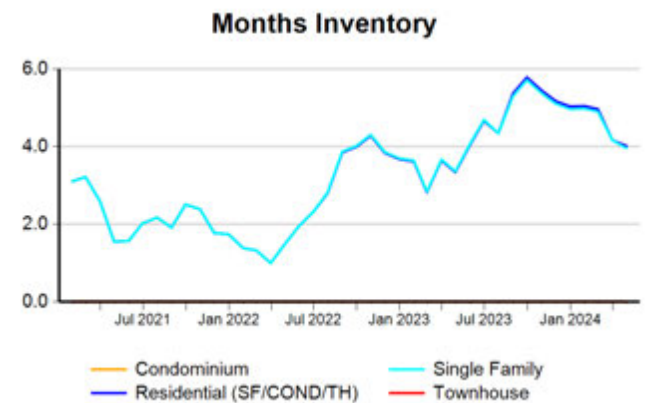
All (New and Existing) Construction



All (New and Existing) Construction



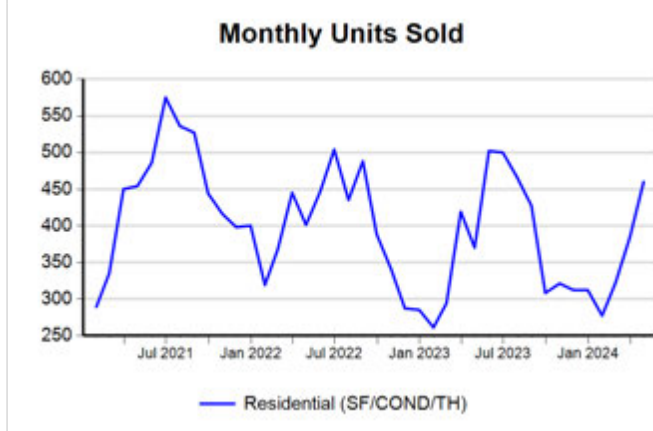
All (New and Existing) Construction



\* Closed Sale counts for most recent 3 months are Preliminary.

Trend Analysis By County: Lubbock County

Residential, All (New and Existing)



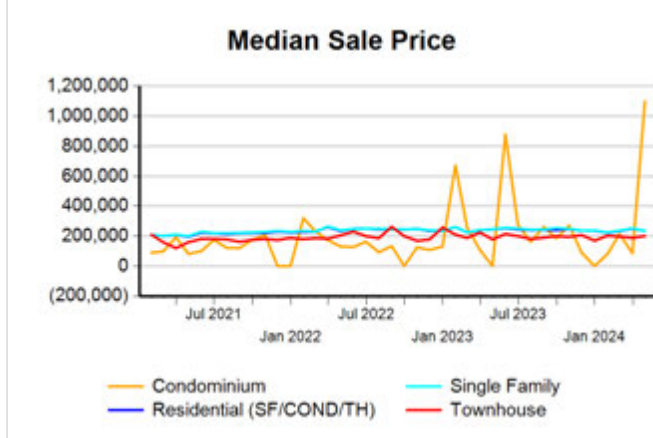
Single Family, New vs. Existing



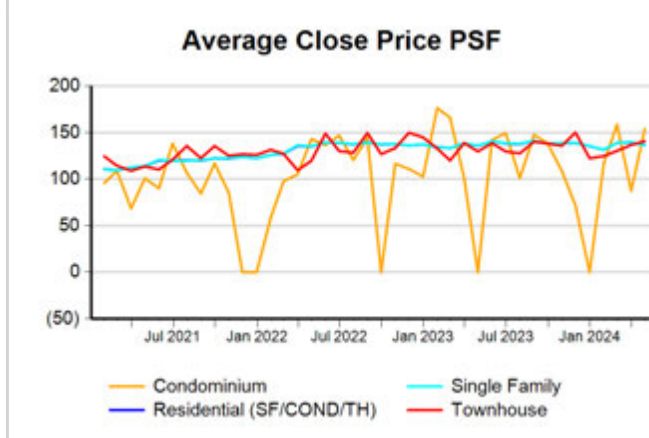
COND/TH, All (New and Existing)



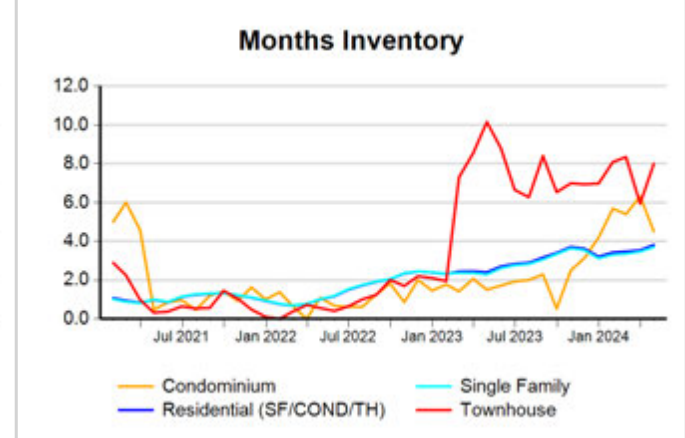
All (New and Existing) Construction



All (New and Existing) Construction



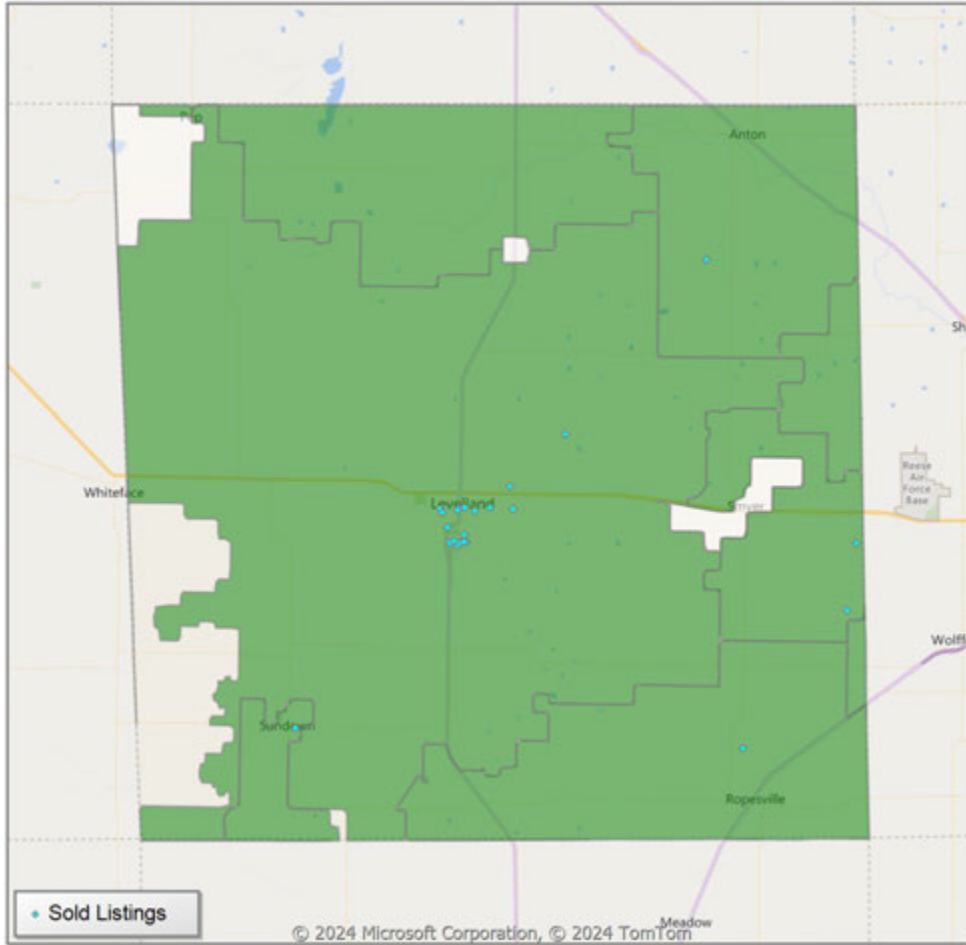
All (New and Existing) Construction



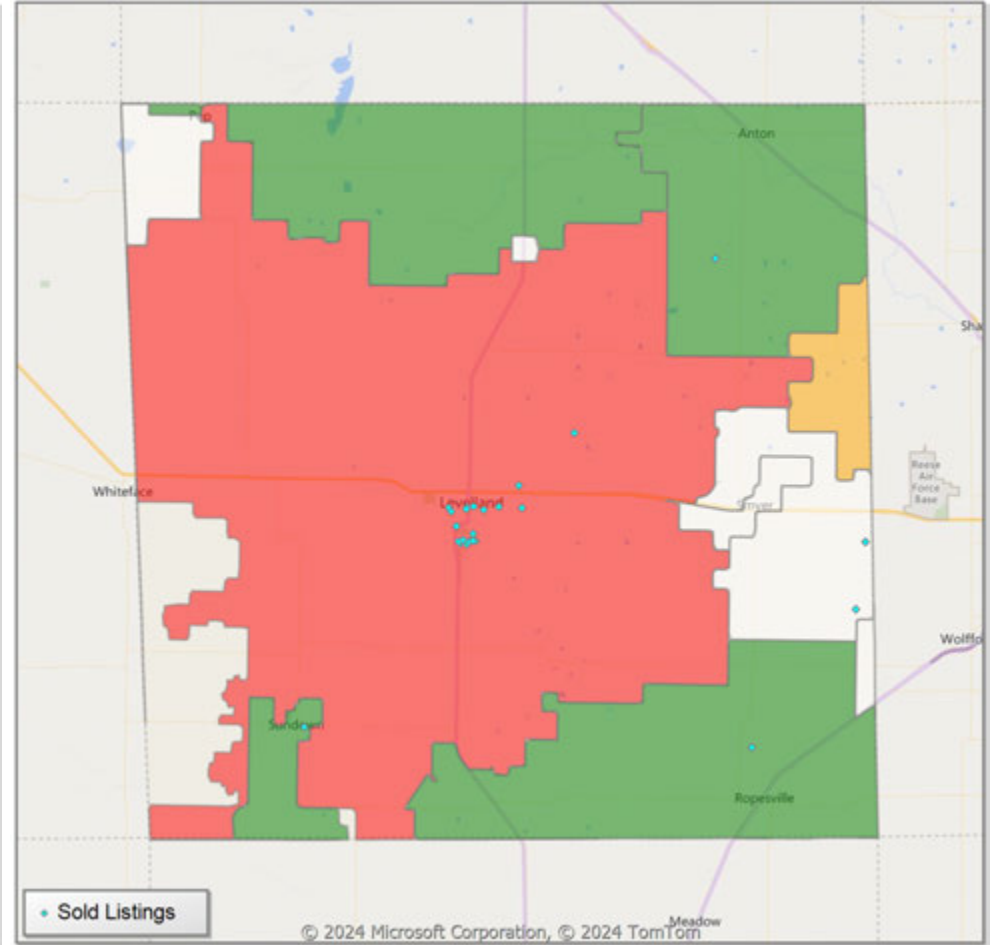
\* Closed Sale counts for most recent 3 months are Preliminary.

**Comparison By Zip Code\* in Hockley County**

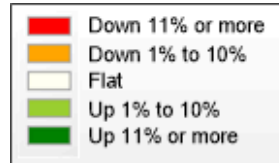
**Residential\*\* Closed Sales  
YoY Percentage Change**



**Residential\*\* Avg Close Price Per SqFt  
YoY Percentage Change**

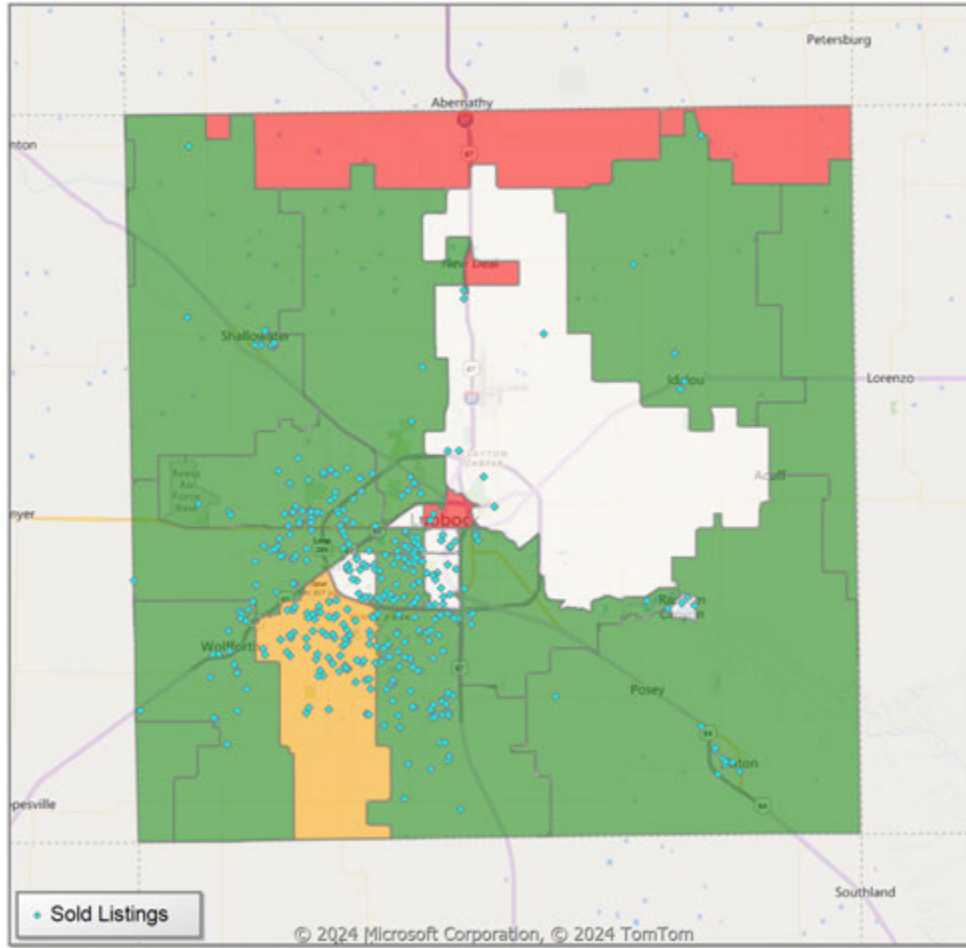


\* US Census Zip Code Tabulation Area  
\*\* Residential includes Single Family, Condominium and Townhouse.

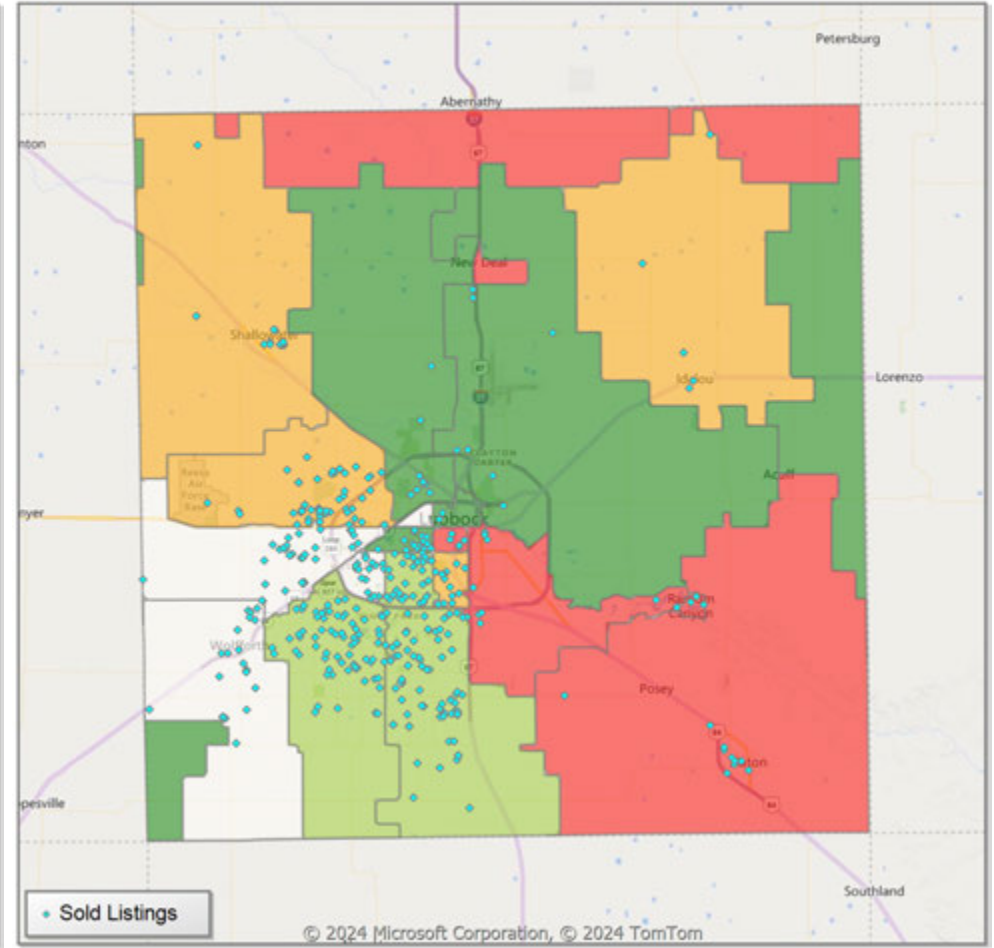


**Comparison By Zip Code\* in Lubbock County**

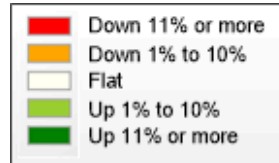
**Residential\*\* Closed Sales  
YoY Percentage Change**



**Residential\*\* Avg Close Price Per SqFt  
YoY Percentage Change**

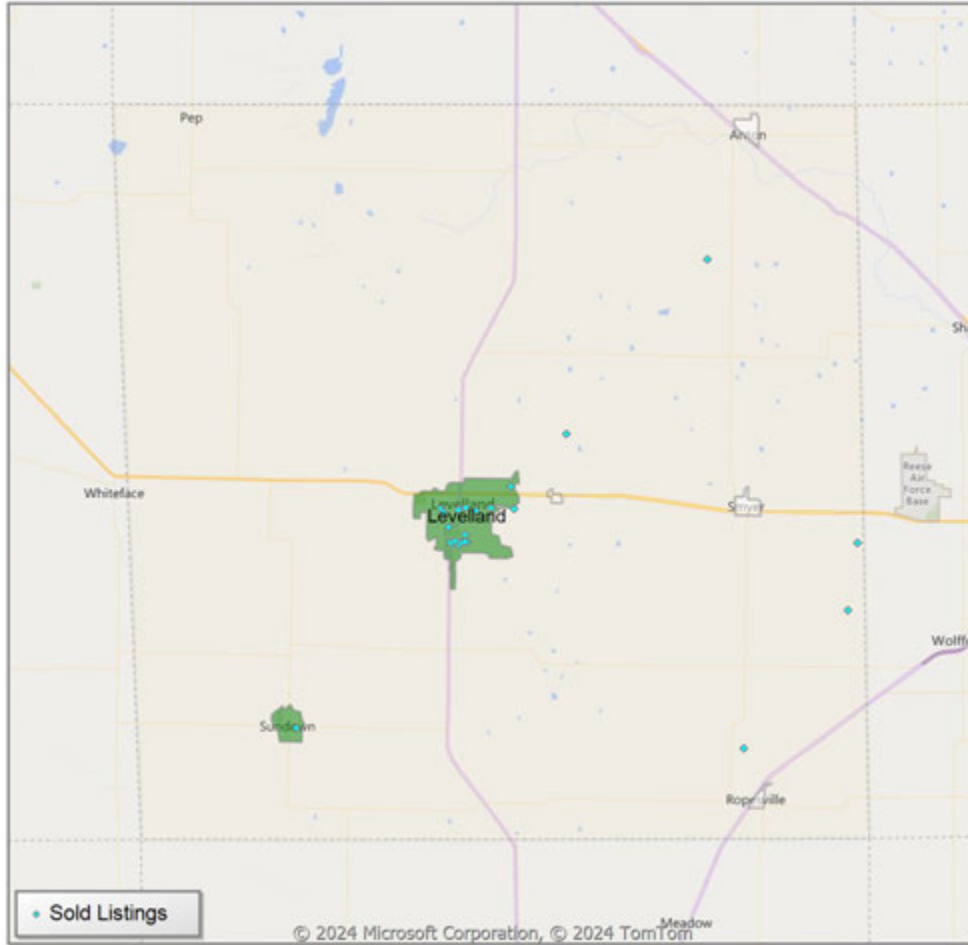


\* US Census Zip Code Tabulation Area  
\*\* Residential includes Single Family, Condominium and Townhouse.

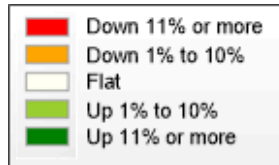
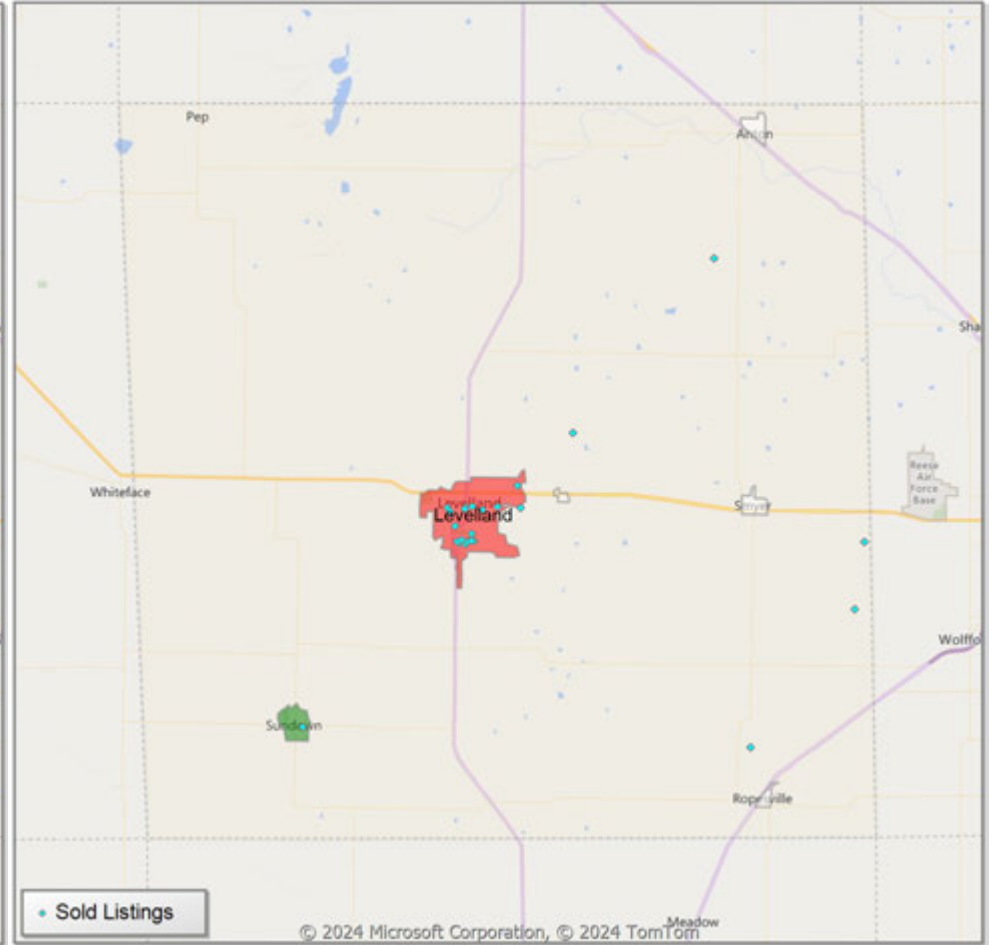


**Comparison By Local Market Area\* in Hockley County**

**Residential\*\* Closed Sales  
YoY Percentage Change**



**Residential\*\* Avg Close Price Per SqFt  
YoY Percentage Change**

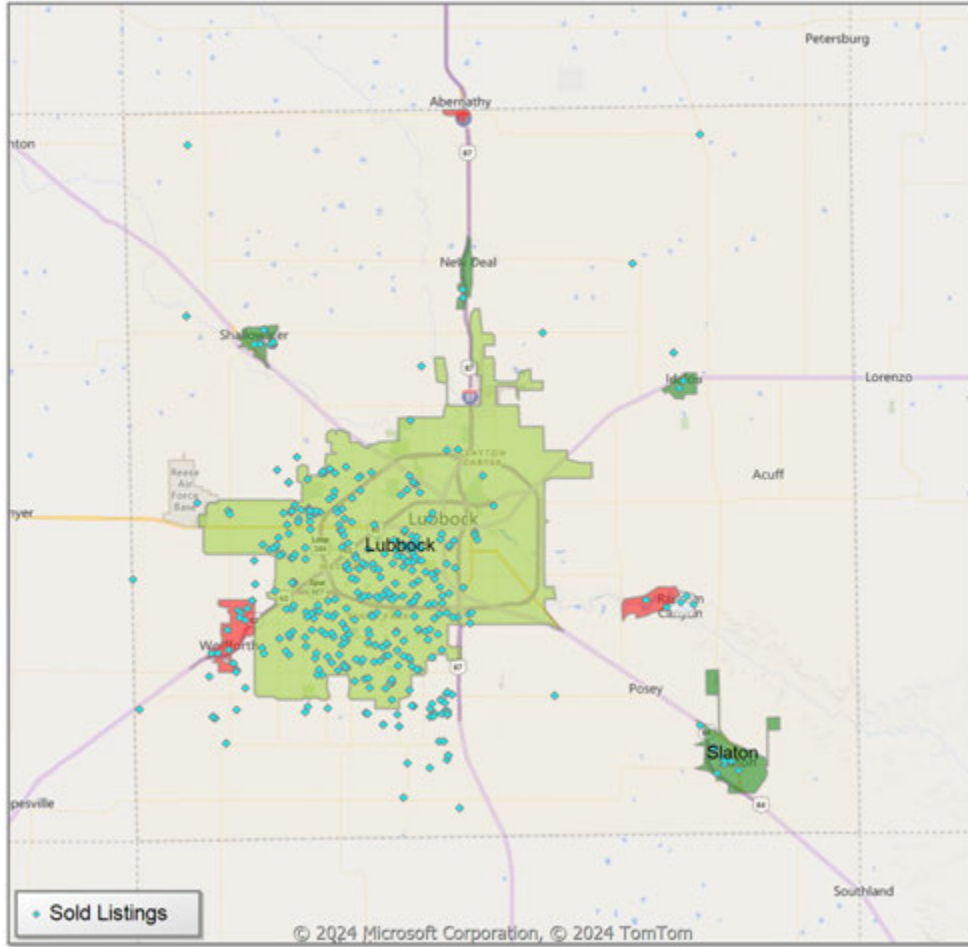


\* Census Place Group

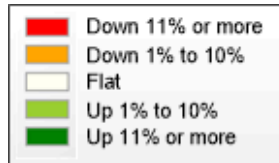
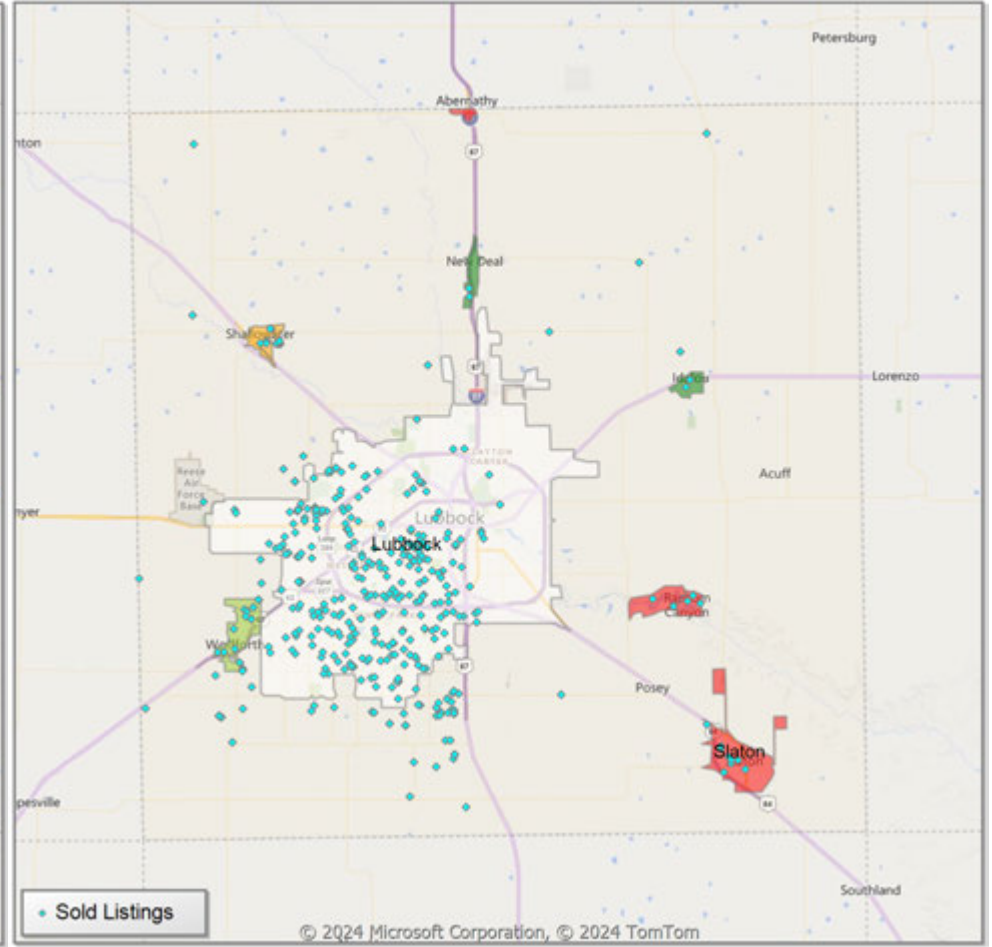
\*\* Residential includes Single Family, Condominium and Townhouse.

**Comparison By Local Market Area\* in Lubbock County**

**Residential\*\* Closed Sales  
YoY Percentage Change**



**Residential\*\* Avg Close Price Per SqFt  
YoY Percentage Change**



\* Census Place Group

\*\* Residential includes Single Family, Condominium and Townhouse.



Market Analysis By Local Market Area\*: Abernathy

Property Type	Closed Sales**	YoY%	Dollar Volume	YoY%	Average Price	YoY%	Median Price	YoY%	Price/Sqft	YoY%	DOM	New Listings	Active Listings	Pending Sales	Months Inventory	Close To OLP
<b>All(New and Existing)</b>																
Residential (SF/COND/TH)	-	-100.0%	-	-100.0%	-	-100.0%	-	-100.0%	-	-100.0%	-	2	10	3	5.5	0.0%
<b>YTD:</b>	3	0.0%	\$538,000	-28.3%	\$179,333	-28.3%	\$173,000	-21.4%	\$115	41.3%	18	14	9	5		98.6%
Single Family	-	-100.0%	-	-100.0%	-	-100.0%	-	-100.0%	-	-100.0%	-	2	10	3	5.5	0.0%
<b>YTD:</b>	3	0.0%	\$538,000	-28.3%	\$179,333	-28.3%	\$173,000	-21.4%	\$115	41.3%	18	14	9	5		98.6%
Townhouse	-	0.0%	-	0.0%	-	0.0%	-	0.0%	-	0.0%	-	-	-	-	-	0.0%
<b>YTD:</b>	-	0.0%	-	0.0%	-	0.0%	-	0.0%	-	0.0%	-	-	-	-	-	0.0%
Condominium	-	0.0%	-	0.0%	-	0.0%	-	0.0%	-	0.0%	-	-	-	-	-	0.0%
<b>YTD:</b>	-	0.0%	-	0.0%	-	0.0%	-	0.0%	-	0.0%	-	-	-	-	-	0.0%
<b>Existing Home</b>																
Residential (SF/COND/TH)	-	-100.0%	-	-100.0%	-	-100.0%	-	-100.0%	-	-100.0%	-	2	10	3	5.5	0.0%
<b>YTD:</b>	3	0.0%	\$538,000	-28.3%	\$179,333	-28.3%	\$173,000	-21.4%	\$115	41.3%	18	14	9	5		98.6%
Single Family	-	-100.0%	-	-100.0%	-	-100.0%	-	-100.0%	-	-100.0%	-	2	10	3	5.5	0.0%
<b>YTD:</b>	3	0.0%	\$538,000	-28.3%	\$179,333	-28.3%	\$173,000	-21.4%	\$115	41.3%	18	14	9	5		98.6%
Townhouse	-	0.0%	-	0.0%	-	0.0%	-	0.0%	-	0.0%	-	-	-	-	-	0.0%
<b>YTD:</b>	-	0.0%	-	0.0%	-	0.0%	-	0.0%	-	0.0%	-	-	-	-	-	0.0%
Condominium	-	0.0%	-	0.0%	-	0.0%	-	0.0%	-	0.0%	-	-	-	-	-	0.0%
<b>YTD:</b>	-	0.0%	-	0.0%	-	0.0%	-	0.0%	-	0.0%	-	-	-	-	-	0.0%
<b>New Construction</b>																
Residential (SF/COND/TH)	-	0.0%	-	0.0%	-	0.0%	-	0.0%	-	0.0%	-	-	-	-	-	0.0%
<b>YTD:</b>	-	0.0%	-	0.0%	-	0.0%	-	0.0%	-	0.0%	-	-	-	-	-	0.0%
Single Family	-	0.0%	-	0.0%	-	0.0%	-	0.0%	-	0.0%	-	-	-	-	-	0.0%
<b>YTD:</b>	-	0.0%	-	0.0%	-	0.0%	-	0.0%	-	0.0%	-	-	-	-	-	0.0%
Townhouse	-	0.0%	-	0.0%	-	0.0%	-	0.0%	-	0.0%	-	-	-	-	-	0.0%
<b>YTD:</b>	-	0.0%	-	0.0%	-	0.0%	-	0.0%	-	0.0%	-	-	-	-	-	0.0%
Condominium	-	0.0%	-	0.0%	-	0.0%	-	0.0%	-	0.0%	-	-	-	-	-	0.0%
<b>YTD:</b>	-	0.0%	-	0.0%	-	0.0%	-	0.0%	-	0.0%	-	-	-	-	-	0.0%

\* Local Market Area Code: 2; Type: Census Place Group  
 \*\* Closed Sale counts for most recent 3 months are Preliminary.

Market Analysis By Local Market Area\*: Anton

Property Type	Closed Sales**	YoY%	Dollar Volume	YoY%	Average Price	YoY%	Median Price	YoY%	Price/Sqft	YoY%	DOM	New Listings	Active Listings	Pending Sales	Months Inventory	Close To OLP
<b>All(New and Existing)</b>																
Residential (SF/COND/TH)	-	0.0%	-	0.0%	-	0.0%	-	0.0%	-	0.0%	-	2	5	-	5.5	0.0%
YTD:	2	100.0%	\$245,000	226.7%	\$122,500	63.3%	\$122,500	63.3%	\$91	64.8%	40	6	3	2		96.6%
Single Family	-	0.0%	-	0.0%	-	0.0%	-	0.0%	-	0.0%	-	2	5	-	5.5	0.0%
YTD:	2	100.0%	\$245,000	226.7%	\$122,500	63.3%	\$122,500	63.3%	\$91	64.8%	40	6	3	2		96.6%
Townhouse	-	0.0%	-	0.0%	-	0.0%	-	0.0%	-	0.0%	-	-	-	-	-	0.0%
YTD:	-	0.0%	-	0.0%	-	0.0%	-	0.0%	-	0.0%	-	-	-	-	-	0.0%
Condominium	-	0.0%	-	0.0%	-	0.0%	-	0.0%	-	0.0%	-	-	-	-	-	0.0%
YTD:	-	0.0%	-	0.0%	-	0.0%	-	0.0%	-	0.0%	-	-	-	-	-	0.0%
<b>Existing Home</b>																
Residential (SF/COND/TH)	-	0.0%	-	0.0%	-	0.0%	-	0.0%	-	0.0%	-	2	5	-	5.5	0.0%
YTD:	2	100.0%	\$245,000	226.7%	\$122,500	63.3%	\$122,500	63.3%	\$91	64.8%	40	6	3	2		96.6%
Single Family	-	0.0%	-	0.0%	-	0.0%	-	0.0%	-	0.0%	-	2	5	-	5.5	0.0%
YTD:	2	100.0%	\$245,000	226.7%	\$122,500	63.3%	\$122,500	63.3%	\$91	64.8%	40	6	3	2		96.6%
Townhouse	-	0.0%	-	0.0%	-	0.0%	-	0.0%	-	0.0%	-	-	-	-	-	0.0%
YTD:	-	0.0%	-	0.0%	-	0.0%	-	0.0%	-	0.0%	-	-	-	-	-	0.0%
Condominium	-	0.0%	-	0.0%	-	0.0%	-	0.0%	-	0.0%	-	-	-	-	-	0.0%
YTD:	-	0.0%	-	0.0%	-	0.0%	-	0.0%	-	0.0%	-	-	-	-	-	0.0%
<b>New Construction</b>																
Residential (SF/COND/TH)	-	0.0%	-	0.0%	-	0.0%	-	0.0%	-	0.0%	-	-	-	-	-	0.0%
YTD:	-	0.0%	-	0.0%	-	0.0%	-	0.0%	-	0.0%	-	-	-	-	-	0.0%
Single Family	-	0.0%	-	0.0%	-	0.0%	-	0.0%	-	0.0%	-	-	-	-	-	0.0%
YTD:	-	0.0%	-	0.0%	-	0.0%	-	0.0%	-	0.0%	-	-	-	-	-	0.0%
Townhouse	-	0.0%	-	0.0%	-	0.0%	-	0.0%	-	0.0%	-	-	-	-	-	0.0%
YTD:	-	0.0%	-	0.0%	-	0.0%	-	0.0%	-	0.0%	-	-	-	-	-	0.0%
Condominium	-	0.0%	-	0.0%	-	0.0%	-	0.0%	-	0.0%	-	-	-	-	-	0.0%
YTD:	-	0.0%	-	0.0%	-	0.0%	-	0.0%	-	0.0%	-	-	-	-	-	0.0%

\* Local Market Area Code: 1014; Type: Census Place Group  
 \*\* Closed Sale counts for most recent 3 months are Preliminary.

Market Analysis By Local Market Area\*: Buffalo Springs

Property Type	Closed Sales**	YoY%	Dollar Volume	YoY%	Average Price	YoY%	Median Price	YoY%	Price/Sqft	YoY%	DOM	New Listings	Active Listings	Pending Sales	Months Inventory	Close To OLP
<b>All(New and Existing)</b>																
Residential (SF/COND/TH)	1	-50.0%	\$190,000	-67.7%	\$190,000	-35.5%	\$190,000	-35.5%	\$122	-28.5%	133	1	3	-	4.0	84.4%
<b>YTD:</b>	4	33.3%	\$960,000	8.6%	\$240,000	-18.6%	\$205,000	-30.5%	\$151	-9.1%	63	7	1	5		91.6%
Single Family	1	-50.0%	\$190,000	-67.7%	\$190,000	-35.5%	\$190,000	-35.5%	\$122	-28.5%	133	1	3	-	4.0	84.4%
<b>YTD:</b>	4	33.3%	\$960,000	8.6%	\$240,000	-18.6%	\$205,000	-30.5%	\$151	-9.1%	63	7	1	5		91.6%
Townhouse	-	0.0%	-	0.0%	-	0.0%	-	0.0%	-	0.0%	-	-	-	-	-	0.0%
<b>YTD:</b>	-	0.0%	-	0.0%	-	0.0%	-	0.0%	-	0.0%	-	-	-	-	-	0.0%
Condominium	-	0.0%	-	0.0%	-	0.0%	-	0.0%	-	0.0%	-	-	-	-	-	0.0%
<b>YTD:</b>	-	0.0%	-	0.0%	-	0.0%	-	0.0%	-	0.0%	-	-	-	-	-	0.0%
<b>Existing Home</b>																
Residential (SF/COND/TH)	1	-50.0%	\$190,000	-67.7%	\$190,000	-35.5%	\$190,000	-35.5%	\$122	-28.5%	133	1	3	-	4.0	84.4%
<b>YTD:</b>	4	33.3%	\$960,000	8.6%	\$240,000	-18.6%	\$205,000	-30.5%	\$151	-9.1%	63	7	1	5		91.6%
Single Family	1	-50.0%	\$190,000	-67.7%	\$190,000	-35.5%	\$190,000	-35.5%	\$122	-28.5%	133	1	3	-	4.0	84.4%
<b>YTD:</b>	4	33.3%	\$960,000	8.6%	\$240,000	-18.6%	\$205,000	-30.5%	\$151	-9.1%	63	7	1	5		91.6%
Townhouse	-	0.0%	-	0.0%	-	0.0%	-	0.0%	-	0.0%	-	-	-	-	-	0.0%
<b>YTD:</b>	-	0.0%	-	0.0%	-	0.0%	-	0.0%	-	0.0%	-	-	-	-	-	0.0%
Condominium	-	0.0%	-	0.0%	-	0.0%	-	0.0%	-	0.0%	-	-	-	-	-	0.0%
<b>YTD:</b>	-	0.0%	-	0.0%	-	0.0%	-	0.0%	-	0.0%	-	-	-	-	-	0.0%
<b>New Construction</b>																
Residential (SF/COND/TH)	-	0.0%	-	0.0%	-	0.0%	-	0.0%	-	0.0%	-	-	-	-	-	0.0%
<b>YTD:</b>	-	0.0%	-	0.0%	-	0.0%	-	0.0%	-	0.0%	-	-	-	-	-	0.0%
Single Family	-	0.0%	-	0.0%	-	0.0%	-	0.0%	-	0.0%	-	-	-	-	-	0.0%
<b>YTD:</b>	-	0.0%	-	0.0%	-	0.0%	-	0.0%	-	0.0%	-	-	-	-	-	0.0%
Townhouse	-	0.0%	-	0.0%	-	0.0%	-	0.0%	-	0.0%	-	-	-	-	-	0.0%
<b>YTD:</b>	-	0.0%	-	0.0%	-	0.0%	-	0.0%	-	0.0%	-	-	-	-	-	0.0%
Condominium	-	0.0%	-	0.0%	-	0.0%	-	0.0%	-	0.0%	-	-	-	-	-	0.0%
<b>YTD:</b>	-	0.0%	-	0.0%	-	0.0%	-	0.0%	-	0.0%	-	-	-	-	-	0.0%

\* Local Market Area Code: 135; Type: Census Place Group  
 \*\* Closed Sale counts for most recent 3 months are Preliminary.

Market Analysis By Local Market Area\*: Idalou

Property Type	Closed Sales**	YoY%	Dollar Volume	YoY%	Average Price	YoY%	Median Price	YoY%	Price/Sqft	YoY%	DOM	New Listings	Active Listings	Pending Sales	Months Inventory	Close To OLP
<b>All(New and Existing)</b>																
Residential (SF/COND/TH)	2	100.0%	\$415,000	100.0%	\$207,500	100.0%	\$207,500	100.0%	\$82	100.0%	87	1	4	1	3.0	93.6%
YTD:	7	75.0%	\$1,203,000	24.2%	\$171,857	-29.0%	\$195,000	-22.8%	\$94	-28.3%	69	7	5	4		88.8%
Single Family	2	100.0%	\$415,000	100.0%	\$207,500	100.0%	\$207,500	100.0%	\$82	100.0%	87	1	4	1	3.0	93.6%
YTD:	7	75.0%	\$1,203,000	24.2%	\$171,857	-29.0%	\$195,000	-22.8%	\$94	-28.3%	69	7	5	4		88.8%
Townhouse	-	0.0%	-	0.0%	-	0.0%	-	0.0%	-	0.0%	-	-	-	-	-	0.0%
YTD:	-	0.0%	-	0.0%	-	0.0%	-	0.0%	-	0.0%	-	-	-	-	-	0.0%
Condominium	-	0.0%	-	0.0%	-	0.0%	-	0.0%	-	0.0%	-	-	-	-	-	0.0%
YTD:	-	0.0%	-	0.0%	-	0.0%	-	0.0%	-	0.0%	-	-	-	-	-	0.0%
<b>Existing Home</b>																
Residential (SF/COND/TH)	2	100.0%	\$415,000	100.0%	\$207,500	100.0%	\$207,500	100.0%	\$82	100.0%	87	1	4	1	3.0	93.6%
YTD:	7	133.3%	\$1,203,000	65.1%	\$171,857	-29.3%	\$195,000	-26.4%	\$94	-16.0%	69	7	5	4		88.8%
Single Family	2	100.0%	\$415,000	100.0%	\$207,500	100.0%	\$207,500	100.0%	\$82	100.0%	87	1	4	1	3.0	93.6%
YTD:	7	133.3%	\$1,203,000	65.1%	\$171,857	-29.3%	\$195,000	-26.4%	\$94	-16.0%	69	7	5	4		88.8%
Townhouse	-	0.0%	-	0.0%	-	0.0%	-	0.0%	-	0.0%	-	-	-	-	-	0.0%
YTD:	-	0.0%	-	0.0%	-	0.0%	-	0.0%	-	0.0%	-	-	-	-	-	0.0%
Condominium	-	0.0%	-	0.0%	-	0.0%	-	0.0%	-	0.0%	-	-	-	-	-	0.0%
YTD:	-	0.0%	-	0.0%	-	0.0%	-	0.0%	-	0.0%	-	-	-	-	-	0.0%
<b>New Construction</b>																
Residential (SF/COND/TH)	-	0.0%	-	0.0%	-	0.0%	-	0.0%	-	0.0%	-	-	-	-	-	0.0%
YTD:	-	-100.0%	-	-100.0%	-	-100.0%	-	-100.0%	-	-100.0%	-	-	-	-	-	0.0%
Single Family	-	0.0%	-	0.0%	-	0.0%	-	0.0%	-	0.0%	-	-	-	-	-	0.0%
YTD:	-	-100.0%	-	-100.0%	-	-100.0%	-	-100.0%	-	-100.0%	-	-	-	-	-	0.0%
Townhouse	-	0.0%	-	0.0%	-	0.0%	-	0.0%	-	0.0%	-	-	-	-	-	0.0%
YTD:	-	0.0%	-	0.0%	-	0.0%	-	0.0%	-	0.0%	-	-	-	-	-	0.0%
Condominium	-	0.0%	-	0.0%	-	0.0%	-	0.0%	-	0.0%	-	-	-	-	-	0.0%
YTD:	-	0.0%	-	0.0%	-	0.0%	-	0.0%	-	0.0%	-	-	-	-	-	0.0%

\* Local Market Area Code: 456; Type: Census Place Group  
 \*\* Closed Sale counts for most recent 3 months are Preliminary.

Market Analysis By Local Market Area\*: Levelland

Property Type	Closed Sales**	YoY%	Dollar Volume	YoY%	Average Price	YoY%	Median Price	YoY%	Price/Sqft	YoY%	DOM	New Listings	Active Listings	Pending Sales	Months Inventory	Close To OLP
<b>All(New and Existing)</b>																
Residential (SF/COND/TH)	18	125.0%	\$3,604,699	150.5%	\$200,261	11.4%	\$207,250	9.4%	\$93	-11.8%	64	6	30	10	2.7	92.1%
YTD:	49	44.1%	\$8,904,699	45.4%	\$181,729	0.9%	\$185,900	-0.7%	\$92	0.1%	69	69	40	56		93.1%
Single Family	18	125.0%	\$3,604,699	150.5%	\$200,261	11.4%	\$207,250	9.4%	\$93	-11.8%	64	6	29	10	2.6	92.1%
YTD:	49	44.1%	\$8,904,699	45.4%	\$181,729	0.9%	\$185,900	-0.7%	\$92	0.1%	69	69	39	56		93.1%
Townhouse	-	0.0%	-	0.0%	-	0.0%	-	0.0%	-	0.0%	-	-	-	-	-	0.0%
YTD:	-	0.0%	-	0.0%	-	0.0%	-	0.0%	-	0.0%	-	-	-	-	-	0.0%
Condominium	-	0.0%	-	0.0%	-	0.0%	-	0.0%	-	0.0%	-	-	1	-	-	0.0%
YTD:	-	0.0%	-	0.0%	-	0.0%	-	0.0%	-	0.0%	-	-	1	-	-	0.0%
<b>Existing Home</b>																
Residential (SF/COND/TH)	18	125.0%	\$3,604,699	150.5%	\$200,261	11.4%	\$207,250	9.4%	\$93	-11.8%	64	6	30	9	2.7	92.1%
YTD:	49	44.1%	\$8,904,699	45.4%	\$181,729	0.9%	\$185,900	-0.7%	\$92	0.1%	69	68	39	54		93.1%
Single Family	18	125.0%	\$3,604,699	150.5%	\$200,261	11.4%	\$207,250	9.4%	\$93	-11.8%	64	6	29	9	2.6	92.1%
YTD:	49	44.1%	\$8,904,699	45.4%	\$181,729	0.9%	\$185,900	-0.7%	\$92	0.1%	69	68	38	54		93.1%
Townhouse	-	0.0%	-	0.0%	-	0.0%	-	0.0%	-	0.0%	-	-	-	-	-	0.0%
YTD:	-	0.0%	-	0.0%	-	0.0%	-	0.0%	-	0.0%	-	-	-	-	-	0.0%
Condominium	-	0.0%	-	0.0%	-	0.0%	-	0.0%	-	0.0%	-	-	1	-	-	0.0%
YTD:	-	0.0%	-	0.0%	-	0.0%	-	0.0%	-	0.0%	-	-	1	-	-	0.0%
<b>New Construction</b>																
Residential (SF/COND/TH)	-	0.0%	-	0.0%	-	0.0%	-	0.0%	-	0.0%	-	-	-	1	-	0.0%
YTD:	-	0.0%	-	0.0%	-	0.0%	-	0.0%	-	0.0%	-	1	1	2		0.0%
Single Family	-	0.0%	-	0.0%	-	0.0%	-	0.0%	-	0.0%	-	-	-	1	-	0.0%
YTD:	-	0.0%	-	0.0%	-	0.0%	-	0.0%	-	0.0%	-	1	1	2		0.0%
Townhouse	-	0.0%	-	0.0%	-	0.0%	-	0.0%	-	0.0%	-	-	-	-	-	0.0%
YTD:	-	0.0%	-	0.0%	-	0.0%	-	0.0%	-	0.0%	-	-	-	-	-	0.0%
Condominium	-	0.0%	-	0.0%	-	0.0%	-	0.0%	-	0.0%	-	-	-	-	-	0.0%
YTD:	-	0.0%	-	0.0%	-	0.0%	-	0.0%	-	0.0%	-	-	-	-	-	0.0%

\* Local Market Area Code: 220; Type: Census Place Group  
 \*\* Closed Sale counts for most recent 3 months are Preliminary.

Market Analysis By Local Market Area\*: Lubbock

Property Type	Closed Sales**	YoY%	Dollar Volume	YoY%	Average Price	YoY%	Median Price	YoY%	Price/Sqft	YoY%	DOM	New Listings	Active Listings	Pending Sales	Months Inventory	Close To OLP
<b>All(New and Existing)</b>																
Residential (SF/COND/TH)	302	9.8%	\$80,105,833	17.8%	\$265,251	7.3%	\$219,105	-3.1%	\$131	0.5%	45	663	1,006	358	3.7	95.6%
YTD:	951	-5.8%	\$248,173,942	-3.0%	\$260,961	2.9%	\$223,000	-0.5%	\$130	-0.2%	48	2,168	908	1,200		95.7%
Single Family	287	5.9%	\$73,397,474	9.2%	\$255,740	3.2%	\$219,105	-3.5%	\$130	-0.2%	44	607	932	335	3.5	95.7%
YTD:	911	-7.2%	\$236,770,765	-5.5%	\$259,902	1.9%	\$225,000	0.0%	\$129	-0.5%	47	2,048	846	1,140		95.7%
Townhouse	9	125.0%	\$1,905,000	131.7%	\$211,667	3.0%	\$209,000	17.8%	\$145	11.8%	80	50	66	18	8.7	94.3%
YTD:	29	31.8%	\$5,949,950	29.9%	\$205,171	-1.4%	\$190,000	-7.3%	\$140	7.6%	82	100	54	48		94.7%
Condominium	5	100.0%	\$4,443,000	100.0%	\$888,600	100.0%	\$1,100,000	100.0%	\$154	100.0%	40	6	8	5	4.0	96.1%
YTD:	10	100.0%	\$5,178,500	445.7%	\$517,850	172.8%	\$222,000	3.3%	\$145	2.3%	34	20	8	12		95.0%
<b>Existing Home</b>																
Residential (SF/COND/TH)	264	12.8%	\$69,848,994	31.5%	\$264,580	16.5%	\$215,000	2.4%	\$128	3.4%	40	591	880	318	3.8	95.4%
YTD:	815	-7.1%	\$207,502,917	-0.5%	\$254,605	7.1%	\$215,000	3.1%	\$125	1.1%	43	1,917	774	1,026		95.4%
Single Family	254	10.0%	\$64,230,586	22.3%	\$252,876	11.2%	\$215,000	2.4%	\$127	2.9%	40	547	825	308	3.6	95.4%
YTD:	793	-6.9%	\$199,707,155	-1.8%	\$251,838	5.5%	\$215,000	3.1%	\$125	1.0%	44	1,826	737	995		95.4%
Townhouse	4	33.3%	\$805,500	30.5%	\$201,375	-2.1%	\$155,250	3.5%	\$135	6.9%	53	38	47	5	15.7	90.0%
YTD:	11	-45.0%	\$2,329,450	-44.3%	\$211,768	1.4%	\$185,000	-10.8%	\$132	2.4%	37	71	30	19		92.9%
Condominium	5	100.0%	\$4,443,000	100.0%	\$888,600	100.0%	\$1,100,000	100.0%	\$154	100.0%	40	6	8	5	4.0	96.1%
YTD:	10	100.0%	\$5,178,500	445.7%	\$517,850	172.8%	\$222,000	3.3%	\$145	2.3%	34	20	7	12		95.0%
<b>New Construction</b>																
Residential (SF/COND/TH)	38	-7.3%	\$10,254,733	-31.1%	\$269,861	-25.6%	\$238,000	-26.7%	\$153	-9.4%	75	72	126	40	3.2	97.5%
YTD:	136	3.0%	\$40,626,155	-14.4%	\$298,722	-16.9%	\$261,285	-15.1%	\$156	-8.3%	74	251	133	174		97.4%
Single Family	33	-17.5%	\$9,163,040	-37.5%	\$277,668	-24.3%	\$242,578	-25.6%	\$153	-9.8%	71	60	107	27	3.1	97.5%
YTD:	118	-9.2%	\$37,020,667	-21.3%	\$313,734	-13.3%	\$270,735	-13.1%	\$158	-7.5%	69	222	109	145		97.7%
Townhouse	5	400.0%	\$1,099,500	436.3%	\$219,900	7.3%	\$212,000	3.4%	\$154	8.7%	102	12	19	13	4.1	97.6%
YTD:	18	800.0%	\$3,620,500	804.0%	\$201,139	0.4%	\$190,000	-5.1%	\$145	0.9%	109	29	24	29		95.6%
Condominium	-	0.0%	-	0.0%	-	0.0%	-	0.0%	-	0.0%	-	-	-	-	-	0.0%
YTD:	-	0.0%	-	0.0%	-	0.0%	-	0.0%	-	0.0%	-	-	1	-		0.0%

\* Local Market Area Code: 596; Type: Census Place Group  
 \*\* Closed Sale counts for most recent 3 months are Preliminary.

Market Analysis By Local Market Area\*: New Deal

Property Type	Closed Sales**	YoY%	Dollar Volume	YoY%	Average Price	YoY%	Median Price	YoY%	Price/Sqft	YoY%	DOM	New Listings	Active Listings	Pending Sales	Months Inventory	Close To OLP
<b>All(New and Existing)</b>																
Residential (SF/COND/TH)	2	100.0%	\$373,000	129.0%	\$186,500	14.5%	\$186,500	14.5%	\$110	23.4%	14	1	2	2	6.0	100.1%
YTD:	2	-33.3%	\$373,000	-41.1%	\$186,500	-11.6%	\$186,500	-4.3%	\$110	7.1%	14	7	3	4		100.1%
Single Family	2	100.0%	\$373,000	129.0%	\$186,500	14.5%	\$186,500	14.5%	\$110	23.4%	14	1	2	2	6.0	100.1%
YTD:	2	-33.3%	\$373,000	-41.1%	\$186,500	-11.6%	\$186,500	-4.3%	\$110	7.1%	14	7	3	4		100.1%
Townhouse	-	0.0%	-	0.0%	-	0.0%	-	0.0%	-	0.0%	-	-	-	-	-	0.0%
YTD:	-	0.0%	-	0.0%	-	0.0%	-	0.0%	-	0.0%	-	-	-	-	-	0.0%
Condominium	-	0.0%	-	0.0%	-	0.0%	-	0.0%	-	0.0%	-	-	-	-	-	0.0%
YTD:	-	0.0%	-	0.0%	-	0.0%	-	0.0%	-	0.0%	-	-	-	-	-	0.0%
<b>Existing Home</b>																
Residential (SF/COND/TH)	1	0.0%	\$125,000	-23.3%	\$125,000	-23.3%	\$125,000	-23.3%	\$62	-30.7%	4	1	2	2	8.0	100.0%
YTD:	1	-66.7%	\$125,000	-80.3%	\$125,000	-40.7%	\$125,000	-35.9%	\$62	-39.9%	4	6	2	3		100.0%
Single Family	1	0.0%	\$125,000	-23.3%	\$125,000	-23.3%	\$125,000	-23.3%	\$62	-30.7%	4	1	2	2	8.0	100.0%
YTD:	1	-66.7%	\$125,000	-80.3%	\$125,000	-40.7%	\$125,000	-35.9%	\$62	-39.9%	4	6	2	3		100.0%
Townhouse	-	0.0%	-	0.0%	-	0.0%	-	0.0%	-	0.0%	-	-	-	-	-	0.0%
YTD:	-	0.0%	-	0.0%	-	0.0%	-	0.0%	-	0.0%	-	-	-	-	-	0.0%
Condominium	-	0.0%	-	0.0%	-	0.0%	-	0.0%	-	0.0%	-	-	-	-	-	0.0%
YTD:	-	0.0%	-	0.0%	-	0.0%	-	0.0%	-	0.0%	-	-	-	-	-	0.0%
<b>New Construction</b>																
Residential (SF/COND/TH)	1	100.0%	\$248,000	100.0%	\$248,000	100.0%	\$248,000	100.0%	\$159	100.0%	25	-	-	-	-	100.2%
YTD:	1	100.0%	\$248,000	100.0%	\$248,000	100.0%	\$248,000	100.0%	\$159	100.0%	25	1	1	1		100.2%
Single Family	1	100.0%	\$248,000	100.0%	\$248,000	100.0%	\$248,000	100.0%	\$159	100.0%	25	-	-	-	-	100.2%
YTD:	1	100.0%	\$248,000	100.0%	\$248,000	100.0%	\$248,000	100.0%	\$159	100.0%	25	1	1	1		100.2%
Townhouse	-	0.0%	-	0.0%	-	0.0%	-	0.0%	-	0.0%	-	-	-	-	-	0.0%
YTD:	-	0.0%	-	0.0%	-	0.0%	-	0.0%	-	0.0%	-	-	-	-	-	0.0%
Condominium	-	0.0%	-	0.0%	-	0.0%	-	0.0%	-	0.0%	-	-	-	-	-	0.0%
YTD:	-	0.0%	-	0.0%	-	0.0%	-	0.0%	-	0.0%	-	-	-	-	-	0.0%

\* Local Market Area Code: 700; Type: Census Place Group  
 \*\* Closed Sale counts for most recent 3 months are Preliminary.

Market Analysis By Local Market Area\*: Ransom Canyon

Property Type	Closed Sales**	YoY%	Dollar Volume	YoY%	Average Price	YoY%	Median Price	YoY%	Price/Sqft	YoY%	DOM	New Listings	Active Listings	Pending Sales	Months Inventory	Close To OLP
<b>All(New and Existing)</b>																
Residential (SF/COND/TH)	4	0.0%	\$1,744,900	-25.2%	\$436,225	-25.2%	\$412,500	-30.4%	\$142	-23.2%	45	10	18	4	7.7	96.8%
YTD:	11	120.0%	\$4,433,900	65.3%	\$403,082	-24.9%	\$385,000	-15.4%	\$140	-21.1%	93	33	13	15		96.4%
Single Family	4	0.0%	\$1,744,900	-25.2%	\$436,225	-25.2%	\$412,500	-30.4%	\$142	-23.2%	45	10	18	4	7.7	96.8%
YTD:	11	120.0%	\$4,433,900	65.3%	\$403,082	-24.9%	\$385,000	-15.4%	\$140	-21.1%	93	33	13	15		96.4%
Townhouse	-	0.0%	-	0.0%	-	0.0%	-	0.0%	-	0.0%	-	-	-	-	-	0.0%
YTD:	-	0.0%	-	0.0%	-	0.0%	-	0.0%	-	0.0%	-	-	-	-	-	0.0%
Condominium	-	0.0%	-	0.0%	-	0.0%	-	0.0%	-	0.0%	-	-	-	-	-	0.0%
YTD:	-	0.0%	-	0.0%	-	0.0%	-	0.0%	-	0.0%	-	-	-	-	-	0.0%
<b>Existing Home</b>																
Residential (SF/COND/TH)	4	0.0%	\$1,744,900	-25.2%	\$436,225	-25.2%	\$412,500	-30.4%	\$142	-23.2%	45	10	12	4	5.3	96.8%
YTD:	11	120.0%	\$4,433,900	65.3%	\$403,082	-24.9%	\$385,000	-15.4%	\$140	-21.1%	93	27	10	15		96.4%
Single Family	4	0.0%	\$1,744,900	-25.2%	\$436,225	-25.2%	\$412,500	-30.4%	\$142	-23.2%	45	10	12	4	5.3	96.8%
YTD:	11	120.0%	\$4,433,900	65.3%	\$403,082	-24.9%	\$385,000	-15.4%	\$140	-21.1%	93	27	10	15		96.4%
Townhouse	-	0.0%	-	0.0%	-	0.0%	-	0.0%	-	0.0%	-	-	-	-	-	0.0%
YTD:	-	0.0%	-	0.0%	-	0.0%	-	0.0%	-	0.0%	-	-	-	-	-	0.0%
Condominium	-	0.0%	-	0.0%	-	0.0%	-	0.0%	-	0.0%	-	-	-	-	-	0.0%
YTD:	-	0.0%	-	0.0%	-	0.0%	-	0.0%	-	0.0%	-	-	-	-	-	0.0%
<b>New Construction</b>																
Residential (SF/COND/TH)	-	0.0%	-	0.0%	-	0.0%	-	0.0%	-	0.0%	-	-	6	-	72.0	0.0%
YTD:	-	0.0%	-	0.0%	-	0.0%	-	0.0%	-	0.0%	-	6	3	-		0.0%
Single Family	-	0.0%	-	0.0%	-	0.0%	-	0.0%	-	0.0%	-	-	6	-	72.0	0.0%
YTD:	-	0.0%	-	0.0%	-	0.0%	-	0.0%	-	0.0%	-	6	3	-		0.0%
Townhouse	-	0.0%	-	0.0%	-	0.0%	-	0.0%	-	0.0%	-	-	-	-	-	0.0%
YTD:	-	0.0%	-	0.0%	-	0.0%	-	0.0%	-	0.0%	-	-	-	-	-	0.0%
Condominium	-	0.0%	-	0.0%	-	0.0%	-	0.0%	-	0.0%	-	-	-	-	-	0.0%
YTD:	-	0.0%	-	0.0%	-	0.0%	-	0.0%	-	0.0%	-	-	-	-	-	0.0%

\* Local Market Area Code: 826; Type: Census Place Group  
 \*\* Closed Sale counts for most recent 3 months are Preliminary.



Market Analysis By Local Market Area\*: Ropesville

Property Type	Closed Sales**	YoY%	Dollar Volume	YoY%	Average Price	YoY%	Median Price	YoY%	Price/Sqft	YoY%	DOM	New Listings	Active Listings	Pending Sales	Months Inventory	Close To OLP
<b>All(New and Existing)</b>																
Residential (SF/COND/TH)	-	0.0%	-	0.0%	-	0.0%	-	0.0%	-	0.0%	-	-	-	-	-	0.0%
YTD:	-	0.0%	-	0.0%	-	0.0%	-	0.0%	-	0.0%	-	-	-	-	-	0.0%
Single Family	-	0.0%	-	0.0%	-	0.0%	-	0.0%	-	0.0%	-	-	-	-	-	0.0%
YTD:	-	0.0%	-	0.0%	-	0.0%	-	0.0%	-	0.0%	-	-	-	-	-	0.0%
Townhouse	-	0.0%	-	0.0%	-	0.0%	-	0.0%	-	0.0%	-	-	-	-	-	0.0%
YTD:	-	0.0%	-	0.0%	-	0.0%	-	0.0%	-	0.0%	-	-	-	-	-	0.0%
Condominium	-	0.0%	-	0.0%	-	0.0%	-	0.0%	-	0.0%	-	-	-	-	-	0.0%
YTD:	-	0.0%	-	0.0%	-	0.0%	-	0.0%	-	0.0%	-	-	-	-	-	0.0%
<b>Existing Home</b>																
Residential (SF/COND/TH)	-	0.0%	-	0.0%	-	0.0%	-	0.0%	-	0.0%	-	-	-	-	-	0.0%
YTD:	-	0.0%	-	0.0%	-	0.0%	-	0.0%	-	0.0%	-	-	-	-	-	0.0%
Single Family	-	0.0%	-	0.0%	-	0.0%	-	0.0%	-	0.0%	-	-	-	-	-	0.0%
YTD:	-	0.0%	-	0.0%	-	0.0%	-	0.0%	-	0.0%	-	-	-	-	-	0.0%
Townhouse	-	0.0%	-	0.0%	-	0.0%	-	0.0%	-	0.0%	-	-	-	-	-	0.0%
YTD:	-	0.0%	-	0.0%	-	0.0%	-	0.0%	-	0.0%	-	-	-	-	-	0.0%
Condominium	-	0.0%	-	0.0%	-	0.0%	-	0.0%	-	0.0%	-	-	-	-	-	0.0%
YTD:	-	0.0%	-	0.0%	-	0.0%	-	0.0%	-	0.0%	-	-	-	-	-	0.0%
<b>New Construction</b>																
Residential (SF/COND/TH)	-	0.0%	-	0.0%	-	0.0%	-	0.0%	-	0.0%	-	-	-	-	-	0.0%
YTD:	-	0.0%	-	0.0%	-	0.0%	-	0.0%	-	0.0%	-	-	-	-	-	0.0%
Single Family	-	0.0%	-	0.0%	-	0.0%	-	0.0%	-	0.0%	-	-	-	-	-	0.0%
YTD:	-	0.0%	-	0.0%	-	0.0%	-	0.0%	-	0.0%	-	-	-	-	-	0.0%
Townhouse	-	0.0%	-	0.0%	-	0.0%	-	0.0%	-	0.0%	-	-	-	-	-	0.0%
YTD:	-	0.0%	-	0.0%	-	0.0%	-	0.0%	-	0.0%	-	-	-	-	-	0.0%
Condominium	-	0.0%	-	0.0%	-	0.0%	-	0.0%	-	0.0%	-	-	-	-	-	0.0%
YTD:	-	0.0%	-	0.0%	-	0.0%	-	0.0%	-	0.0%	-	-	-	-	-	0.0%

\* Local Market Area Code: 222; Type: Census Place Group  
 \*\* Closed Sale counts for most recent 3 months are Preliminary.

Market Analysis By Local Market Area\*: Shallowater

Property Type	Closed Sales**	YoY%	Dollar Volume	YoY%	Average Price	YoY%	Median Price	YoY%	Price/Sqft	YoY%	DOM	New Listings	Active Listings	Pending Sales	Months Inventory	Close To OLP
<b>All(New and Existing)</b>																
Residential (SF/COND/TH)	7	133.3%	\$1,859,250	92.1%	\$265,607	-17.7%	\$267,000	-16.0%	\$130	-7.8%	44	7	14	1	4.9	92.6%
YTD:	14	75.0%	\$3,278,750	39.2%	\$234,196	-20.5%	\$244,500	-20.8%	\$128	-10.2%	61	32	13	16		94.9%
Single Family	7	133.3%	\$1,859,250	92.1%	\$265,607	-17.7%	\$267,000	-16.0%	\$130	-7.8%	44	7	14	1	4.9	92.6%
YTD:	14	75.0%	\$3,278,750	39.2%	\$234,196	-20.5%	\$244,500	-20.8%	\$128	-10.2%	61	32	13	16		94.9%
Townhouse	-	0.0%	-	0.0%	-	0.0%	-	0.0%	-	0.0%	-	-	-	-	-	0.0%
YTD:	-	0.0%	-	0.0%	-	0.0%	-	0.0%	-	0.0%	-	-	-	-	-	0.0%
Condominium	-	0.0%	-	0.0%	-	0.0%	-	0.0%	-	0.0%	-	-	-	-	-	0.0%
YTD:	-	0.0%	-	0.0%	-	0.0%	-	0.0%	-	0.0%	-	-	-	-	-	0.0%
<b>Existing Home</b>																
Residential (SF/COND/TH)	6	500.0%	\$1,589,250	576.3%	\$264,875	12.7%	\$258,500	10.0%	\$126	2.3%	51	6	9	1	3.5	91.9%
YTD:	13	225.0%	\$3,008,750	236.0%	\$231,442	3.4%	\$240,000	14.2%	\$126	2.6%	65	23	7	15		94.8%
Single Family	6	500.0%	\$1,589,250	576.3%	\$264,875	12.7%	\$258,500	10.0%	\$126	2.3%	51	6	9	1	3.5	91.9%
YTD:	13	225.0%	\$3,008,750	236.0%	\$231,442	3.4%	\$240,000	14.2%	\$126	2.6%	65	23	7	15		94.8%
Townhouse	-	0.0%	-	0.0%	-	0.0%	-	0.0%	-	0.0%	-	-	-	-	-	0.0%
YTD:	-	0.0%	-	0.0%	-	0.0%	-	0.0%	-	0.0%	-	-	-	-	-	0.0%
Condominium	-	0.0%	-	0.0%	-	0.0%	-	0.0%	-	0.0%	-	-	-	-	-	0.0%
YTD:	-	0.0%	-	0.0%	-	0.0%	-	0.0%	-	0.0%	-	-	-	-	-	0.0%
<b>New Construction</b>																
Residential (SF/COND/TH)	1	-50.0%	\$270,000	-63.2%	\$270,000	-26.3%	\$270,000	-26.3%	\$155	2.9%	4	1	5	-	20.0	96.4%
YTD:	1	-75.0%	\$270,000	-81.5%	\$270,000	-26.1%	\$270,000	-26.3%	\$155	-4.8%	4	9	5	1		96.4%
Single Family	1	-50.0%	\$270,000	-63.2%	\$270,000	-26.3%	\$270,000	-26.3%	\$155	2.9%	4	1	5	-	20.0	96.4%
YTD:	1	-75.0%	\$270,000	-81.5%	\$270,000	-26.1%	\$270,000	-26.3%	\$155	-4.8%	4	9	5	1		96.4%
Townhouse	-	0.0%	-	0.0%	-	0.0%	-	0.0%	-	0.0%	-	-	-	-	-	0.0%
YTD:	-	0.0%	-	0.0%	-	0.0%	-	0.0%	-	0.0%	-	-	-	-	-	0.0%
Condominium	-	0.0%	-	0.0%	-	0.0%	-	0.0%	-	0.0%	-	-	-	-	-	0.0%
YTD:	-	0.0%	-	0.0%	-	0.0%	-	0.0%	-	0.0%	-	-	-	-	-	0.0%

\* Local Market Area Code: 925; Type: Census Place Group  
 \*\* Closed Sale counts for most recent 3 months are Preliminary.

Market Analysis By Local Market Area\*: Slaton

Property Type	Closed Sales**	YoY%	Dollar Volume	YoY%	Average Price	YoY%	Median Price	YoY%	Price/Sqft	YoY%	DOM	New Listings	Active Listings	Pending Sales	Months Inventory	Close To OLP
<b>All(New and Existing)</b>																
Residential (SF/COND/TH)	8	60.0%	\$1,226,000	30.7%	\$153,250	-18.3%	\$135,000	-42.6%	\$86	-24.6%	77	6	20	4	3.9	95.5%
YTD:	23	76.9%	\$3,635,900	71.0%	\$158,083	-3.4%	\$138,500	-16.8%	\$89	-7.4%	83	28	20	19		91.6%
Single Family	8	60.0%	\$1,226,000	30.7%	\$153,250	-18.3%	\$135,000	-42.6%	\$86	-24.6%	77	6	19	4	3.7	95.5%
YTD:	23	76.9%	\$3,635,900	71.0%	\$158,083	-3.4%	\$138,500	-16.8%	\$89	-7.4%	83	27	19	19		91.6%
Townhouse	-	0.0%	-	0.0%	-	0.0%	-	0.0%	-	0.0%	-	-	-	-	-	0.0%
YTD:	-	0.0%	-	0.0%	-	0.0%	-	0.0%	-	0.0%	-	-	-	-	-	0.0%
Condominium	-	0.0%	-	0.0%	-	0.0%	-	0.0%	-	0.0%	-	-	1	-	-	0.0%
YTD:	-	0.0%	-	0.0%	-	0.0%	-	0.0%	-	0.0%	-	1	1	-	-	0.0%
<b>Existing Home</b>																
Residential (SF/COND/TH)	8	60.0%	\$1,226,000	30.7%	\$153,250	-18.3%	\$135,000	-42.6%	\$86	-24.6%	77	6	20	4	3.9	95.5%
YTD:	23	76.9%	\$3,635,900	71.0%	\$158,083	-3.4%	\$138,500	-16.8%	\$89	-7.4%	83	28	20	19		91.6%
Single Family	8	60.0%	\$1,226,000	30.7%	\$153,250	-18.3%	\$135,000	-42.6%	\$86	-24.6%	77	6	19	4	3.7	95.5%
YTD:	23	76.9%	\$3,635,900	71.0%	\$158,083	-3.4%	\$138,500	-16.8%	\$89	-7.4%	83	27	19	19		91.6%
Townhouse	-	0.0%	-	0.0%	-	0.0%	-	0.0%	-	0.0%	-	-	-	-	-	0.0%
YTD:	-	0.0%	-	0.0%	-	0.0%	-	0.0%	-	0.0%	-	-	-	-	-	0.0%
Condominium	-	0.0%	-	0.0%	-	0.0%	-	0.0%	-	0.0%	-	-	1	-	-	0.0%
YTD:	-	0.0%	-	0.0%	-	0.0%	-	0.0%	-	0.0%	-	1	1	-	-	0.0%
<b>New Construction</b>																
Residential (SF/COND/TH)	-	0.0%	-	0.0%	-	0.0%	-	0.0%	-	0.0%	-	-	-	-	-	0.0%
YTD:	-	0.0%	-	0.0%	-	0.0%	-	0.0%	-	0.0%	-	-	-	-	-	0.0%
Single Family	-	0.0%	-	0.0%	-	0.0%	-	0.0%	-	0.0%	-	-	-	-	-	0.0%
YTD:	-	0.0%	-	0.0%	-	0.0%	-	0.0%	-	0.0%	-	-	-	-	-	0.0%
Townhouse	-	0.0%	-	0.0%	-	0.0%	-	0.0%	-	0.0%	-	-	-	-	-	0.0%
YTD:	-	0.0%	-	0.0%	-	0.0%	-	0.0%	-	0.0%	-	-	-	-	-	0.0%
Condominium	-	0.0%	-	0.0%	-	0.0%	-	0.0%	-	0.0%	-	-	-	-	-	0.0%
YTD:	-	0.0%	-	0.0%	-	0.0%	-	0.0%	-	0.0%	-	-	-	-	-	0.0%

\* Local Market Area Code: 935; Type: Census Place Group  
 \*\* Closed Sale counts for most recent 3 months are Preliminary.

Market Analysis By Local Market Area\*: Smyer

Property Type	Closed Sales**	YoY%	Dollar Volume	YoY%	Average Price	YoY%	Median Price	YoY%	Price/Sqft	YoY%	DOM	New Listings	Active Listings	Pending Sales	Months Inventory	Close To OLP
<b>All(New and Existing)</b>																
Residential (SF/COND/TH)	-	0.0%	-	0.0%	-	0.0%	-	0.0%	-	0.0%	-	1	1	1	12.0	0.0%
YTD:	1	100.0%	\$228,000	100.0%	\$228,000	100.0%	\$228,000	100.0%	\$112	100.0%	57	1	1	2		104.3%
Single Family	-	0.0%	-	0.0%	-	0.0%	-	0.0%	-	0.0%	-	1	1	1	12.0	0.0%
YTD:	1	100.0%	\$228,000	100.0%	\$228,000	100.0%	\$228,000	100.0%	\$112	100.0%	57	1	1	2		104.3%
Townhouse	-	0.0%	-	0.0%	-	0.0%	-	0.0%	-	0.0%	-	-	-	-	-	0.0%
YTD:	-	0.0%	-	0.0%	-	0.0%	-	0.0%	-	0.0%	-	-	-	-	-	0.0%
Condominium	-	0.0%	-	0.0%	-	0.0%	-	0.0%	-	0.0%	-	-	-	-	-	0.0%
YTD:	-	0.0%	-	0.0%	-	0.0%	-	0.0%	-	0.0%	-	-	-	-	-	0.0%
<b>Existing Home</b>																
Residential (SF/COND/TH)	-	0.0%	-	0.0%	-	0.0%	-	0.0%	-	0.0%	-	1	1	1	12.0	0.0%
YTD:	1	100.0%	\$228,000	100.0%	\$228,000	100.0%	\$228,000	100.0%	\$112	100.0%	57	1	1	2		104.3%
Single Family	-	0.0%	-	0.0%	-	0.0%	-	0.0%	-	0.0%	-	1	1	1	12.0	0.0%
YTD:	1	100.0%	\$228,000	100.0%	\$228,000	100.0%	\$228,000	100.0%	\$112	100.0%	57	1	1	2		104.3%
Townhouse	-	0.0%	-	0.0%	-	0.0%	-	0.0%	-	0.0%	-	-	-	-	-	0.0%
YTD:	-	0.0%	-	0.0%	-	0.0%	-	0.0%	-	0.0%	-	-	-	-	-	0.0%
Condominium	-	0.0%	-	0.0%	-	0.0%	-	0.0%	-	0.0%	-	-	-	-	-	0.0%
YTD:	-	0.0%	-	0.0%	-	0.0%	-	0.0%	-	0.0%	-	-	-	-	-	0.0%
<b>New Construction</b>																
Residential (SF/COND/TH)	-	0.0%	-	0.0%	-	0.0%	-	0.0%	-	0.0%	-	-	-	-	-	0.0%
YTD:	-	0.0%	-	0.0%	-	0.0%	-	0.0%	-	0.0%	-	-	-	-	-	0.0%
Single Family	-	0.0%	-	0.0%	-	0.0%	-	0.0%	-	0.0%	-	-	-	-	-	0.0%
YTD:	-	0.0%	-	0.0%	-	0.0%	-	0.0%	-	0.0%	-	-	-	-	-	0.0%
Townhouse	-	0.0%	-	0.0%	-	0.0%	-	0.0%	-	0.0%	-	-	-	-	-	0.0%
YTD:	-	0.0%	-	0.0%	-	0.0%	-	0.0%	-	0.0%	-	-	-	-	-	0.0%
Condominium	-	0.0%	-	0.0%	-	0.0%	-	0.0%	-	0.0%	-	-	-	-	-	0.0%
YTD:	-	0.0%	-	0.0%	-	0.0%	-	0.0%	-	0.0%	-	-	-	-	-	0.0%

\* Local Market Area Code: 491; Type: Census Place Group  
 \*\* Closed Sale counts for most recent 3 months are Preliminary.

Market Analysis By Local Market Area\*: Sundown

Property Type	Closed Sales**	YoY%	Dollar Volume	YoY%	Average Price	YoY%	Median Price	YoY%	Price/Sqft	YoY%	DOM	New Listings	Active Listings	Pending Sales	Months Inventory	Close To OLP
<b>All(New and Existing)</b>																
Residential (SF/COND/TH)	1	100.0%	\$50,000	100.0%	\$50,000	100.0%	\$50,000	100.0%	\$20	100.0%	111	1	2	1	3.4	66.7%
YTD:	3	100.0%	\$229,000	100.0%	\$76,333	100.0%	\$69,000	100.0%	\$52	100.0%	56	2	2	4		77.1%
Single Family	1	100.0%	\$50,000	100.0%	\$50,000	100.0%	\$50,000	100.0%	\$20	100.0%	111	1	2	1	3.4	66.7%
YTD:	3	100.0%	\$229,000	100.0%	\$76,333	100.0%	\$69,000	100.0%	\$52	100.0%	56	2	2	4		77.1%
Townhouse	-	0.0%	-	0.0%	-	0.0%	-	0.0%	-	0.0%	-	-	-	-	-	0.0%
YTD:	-	0.0%	-	0.0%	-	0.0%	-	0.0%	-	0.0%	-	-	-	-	-	0.0%
Condominium	-	0.0%	-	0.0%	-	0.0%	-	0.0%	-	0.0%	-	-	-	-	-	0.0%
YTD:	-	0.0%	-	0.0%	-	0.0%	-	0.0%	-	0.0%	-	-	-	-	-	0.0%
<b>Existing Home</b>																
Residential (SF/COND/TH)	1	100.0%	\$50,000	100.0%	\$50,000	100.0%	\$50,000	100.0%	\$20	100.0%	111	1	2	1	3.4	66.7%
YTD:	3	100.0%	\$229,000	100.0%	\$76,333	100.0%	\$69,000	100.0%	\$52	100.0%	56	2	2	4		77.1%
Single Family	1	100.0%	\$50,000	100.0%	\$50,000	100.0%	\$50,000	100.0%	\$20	100.0%	111	1	2	1	3.4	66.7%
YTD:	3	100.0%	\$229,000	100.0%	\$76,333	100.0%	\$69,000	100.0%	\$52	100.0%	56	2	2	4		77.1%
Townhouse	-	0.0%	-	0.0%	-	0.0%	-	0.0%	-	0.0%	-	-	-	-	-	0.0%
YTD:	-	0.0%	-	0.0%	-	0.0%	-	0.0%	-	0.0%	-	-	-	-	-	0.0%
Condominium	-	0.0%	-	0.0%	-	0.0%	-	0.0%	-	0.0%	-	-	-	-	-	0.0%
YTD:	-	0.0%	-	0.0%	-	0.0%	-	0.0%	-	0.0%	-	-	-	-	-	0.0%
<b>New Construction</b>																
Residential (SF/COND/TH)	-	0.0%	-	0.0%	-	0.0%	-	0.0%	-	0.0%	-	-	-	-	-	0.0%
YTD:	-	0.0%	-	0.0%	-	0.0%	-	0.0%	-	0.0%	-	-	-	-	-	0.0%
Single Family	-	0.0%	-	0.0%	-	0.0%	-	0.0%	-	0.0%	-	-	-	-	-	0.0%
YTD:	-	0.0%	-	0.0%	-	0.0%	-	0.0%	-	0.0%	-	-	-	-	-	0.0%
Townhouse	-	0.0%	-	0.0%	-	0.0%	-	0.0%	-	0.0%	-	-	-	-	-	0.0%
YTD:	-	0.0%	-	0.0%	-	0.0%	-	0.0%	-	0.0%	-	-	-	-	-	0.0%
Condominium	-	0.0%	-	0.0%	-	0.0%	-	0.0%	-	0.0%	-	-	-	-	-	0.0%
YTD:	-	0.0%	-	0.0%	-	0.0%	-	0.0%	-	0.0%	-	-	-	-	-	0.0%

\* Local Market Area Code: 223; Type: Census Place Group  
 \*\* Closed Sale counts for most recent 3 months are Preliminary.

Market Analysis By Local Market Area\*: Wolfforth

Property Type	Closed Sales**	YoY%	Dollar Volume	YoY%	Average Price	YoY%	Median Price	YoY%	Price/Sqft	YoY%	DOM	New Listings	Active Listings	Pending Sales	Months Inventory	Close To OLP
<b>All(New and Existing)</b>																
Residential (SF/COND/TH)	15	-25.0%	\$4,432,122	-31.3%	\$295,475	-8.4%	\$278,975	-13.5%	\$152	1.9%	49	22	40	14	2.3	98.0%
YTD:	57	-19.7%	\$17,305,887	-16.9%	\$303,612	3.5%	\$307,425	4.2%	\$152	3.6%	56	98	39	67		97.2%
Single Family	15	-25.0%	\$4,432,122	-31.3%	\$295,475	-8.4%	\$278,975	-13.5%	\$152	1.9%	49	21	39	14	2.3	98.0%
YTD:	57	-19.7%	\$17,305,887	-16.9%	\$303,612	3.5%	\$307,425	4.2%	\$152	3.6%	56	97	38	67		97.2%
Townhouse	-	0.0%	-	0.0%	-	0.0%	-	0.0%	-	0.0%	-	1	1	-	12.0	0.0%
YTD:	-	0.0%	-	0.0%	-	0.0%	-	0.0%	-	0.0%	-	1	1	-		0.0%
Condominium	-	0.0%	-	0.0%	-	0.0%	-	0.0%	-	0.0%	-	-	-	-	-	0.0%
YTD:	-	0.0%	-	0.0%	-	0.0%	-	0.0%	-	0.0%	-	-	-	-		0.0%
<b>Existing Home</b>																
Residential (SF/COND/TH)	11	10.0%	\$3,029,400	9.3%	\$275,400	-0.7%	\$264,250	-10.4%	\$147	10.1%	28	19	30	10	2.9	97.4%
YTD:	39	30.0%	\$11,616,509	50.2%	\$297,859	15.5%	\$313,750	18.4%	\$148	13.3%	54	77	25	46		96.6%
Single Family	11	10.0%	\$3,029,400	9.3%	\$275,400	-0.7%	\$264,250	-10.4%	\$147	10.1%	28	18	29	10	2.8	97.4%
YTD:	39	30.0%	\$11,616,509	50.2%	\$297,859	15.5%	\$313,750	18.4%	\$148	13.3%	54	76	25	46		96.6%
Townhouse	-	0.0%	-	0.0%	-	0.0%	-	0.0%	-	0.0%	-	1	1	-	12.0	0.0%
YTD:	-	0.0%	-	0.0%	-	0.0%	-	0.0%	-	0.0%	-	1	1	-		0.0%
Condominium	-	0.0%	-	0.0%	-	0.0%	-	0.0%	-	0.0%	-	-	-	-	-	0.0%
YTD:	-	0.0%	-	0.0%	-	0.0%	-	0.0%	-	0.0%	-	-	-	-		0.0%
<b>New Construction</b>																
Residential (SF/COND/TH)	4	-60.0%	\$1,382,647	-62.4%	\$345,662	-6.0%	\$342,146	-5.3%	\$164	-0.4%	102	3	10	4	1.5	99.3%
YTD:	18	-56.1%	\$5,683,625	-56.6%	\$315,757	-1.1%	\$304,050	2.0%	\$159	0.5%	58	21	13	21		98.4%
Single Family	4	-60.0%	\$1,382,647	-62.4%	\$345,662	-6.0%	\$342,146	-5.3%	\$164	-0.4%	102	3	10	4	1.5	99.3%
YTD:	18	-56.1%	\$5,683,625	-56.6%	\$315,757	-1.1%	\$304,050	2.0%	\$159	0.5%	58	21	13	21		98.4%
Townhouse	-	0.0%	-	0.0%	-	0.0%	-	0.0%	-	0.0%	-	-	-	-	-	0.0%
YTD:	-	0.0%	-	0.0%	-	0.0%	-	0.0%	-	0.0%	-	-	-	-		0.0%
Condominium	-	0.0%	-	0.0%	-	0.0%	-	0.0%	-	0.0%	-	-	-	-	-	0.0%
YTD:	-	0.0%	-	0.0%	-	0.0%	-	0.0%	-	0.0%	-	-	-	-		0.0%

\* Local Market Area Code: 1096; Type: Census Place Group  
 \*\* Closed Sale counts for most recent 3 months are Preliminary.

