

Market Analysis By State: Texas

Property Type	Closed Sales*	YoY%	Dollar Volume	YoY%	Average Price	YoY%	Median Price	YoY%	Price/Sqft	YoY%	DOM	New Listings	Active Listings	Pending Sales	Months Inventory	Close To OLP
All(New and Existing)																
Residential (SF/COND/TH)	28,947	-6.2%	\$12,064,393,683	-2.7%	\$416,775	3.8%	\$337,900	2.4%	\$191	2.9%	62	48,699	104,136	31,680	3.8	95.2%
YTD:	72,361	0.0%	\$29,348,251,039	2.9%	\$405,581	3.0%	\$330,950	1.6%	\$188	2.5%	65	132,361	98,798	85,664		94.6%
Single Family	27,325	-5.8%	\$11,492,140,803	-2.1%	\$420,572	3.9%	\$339,990	1.8%	\$189	3.3%	63	45,039	95,799	29,775	3.7	95.2%
YTD:	68,269	0.5%	\$27,940,204,680	3.4%	\$409,266	2.9%	\$334,950	1.5%	\$185	2.8%	65	122,389	91,171	80,725		94.6%
Townhouse	733	-10.2%	\$262,941,849	-9.6%	\$358,720	0.7%	\$329,990	-1.0%	\$196	1.3%	52	1,416	2,916	855	4.1	96.0%
YTD:	1,885	-2.9%	\$665,963,180	0.0%	\$353,296	3.0%	\$325,000	1.6%	\$193	2.2%	58	4,003	2,722	2,285		95.5%
Condominium	863	-17.9%	\$300,600,491	-18.4%	\$348,320	-0.6%	\$263,500	-0.6%	\$264	-0.1%	62	2,244	5,421	1,050	6.0	94.0%
YTD:	2,164	-13.7%	\$727,588,657	-12.6%	\$336,224	1.2%	\$255,000	4.1%	\$261	2.5%	64	5,969	4,904	2,654		93.6%
Existing Home																
Residential (SF/COND/TH)	21,152	-7.2%	\$8,740,066,658	-1.6%	\$413,203	6.1%	\$327,000	3.8%	\$191	4.3%	55	37,738	75,154	23,007	3.7	95.1%
YTD:	52,487	-1.8%	\$21,121,091,564	3.6%	\$402,406	5.5%	\$320,500	3.4%	\$188	4.2%	59	99,850	69,784	61,111		94.5%
Single Family	19,779	-6.6%	\$8,272,795,565	-0.8%	\$418,262	6.3%	\$330,000	3.6%	\$188	4.7%	56	34,636	68,353	21,400	3.6	95.1%
YTD:	48,991	-1.3%	\$19,962,481,857	4.2%	\$407,472	5.6%	\$325,000	3.3%	\$185	4.4%	59	91,487	63,639	56,970		94.5%
Townhouse	528	-17.6%	\$184,276,580	-15.3%	\$349,009	2.9%	\$305,000	0.3%	\$190	3.1%	41	1,054	1,976	615	3.7	96.3%
YTD:	1,408	-4.9%	\$479,109,024	-0.8%	\$340,276	4.3%	\$302,000	3.4%	\$188	3.7%	48	2,901	1,815	1,643		95.7%
Condominium	820	-15.6%	\$274,691,286	-16.1%	\$334,989	-0.5%	\$255,000	2.0%	\$259	0.2%	61	2,048	4,825	992	5.7	94.0%
YTD:	2,048	-12.7%	\$666,323,624	-10.7%	\$325,353	2.3%	\$247,500	5.3%	\$258	3.6%	63	5,462	4,330	2,498		93.6%
New Construction																
Residential (SF/COND/TH)	7,789	-3.5%	\$3,322,444,499	-5.6%	\$426,556	-2.2%	\$355,000	-4.1%	\$192	-0.6%	81	10,961	28,982	8,673	4.1	95.5%
YTD:	19,853	5.0%	\$8,219,193,691	1.2%	\$414,003	-3.6%	\$350,000	-3.7%	\$188	-1.8%	81	32,511	29,014	24,553		94.8%
Single Family	7,542	-3.6%	\$3,218,057,809	-5.5%	\$426,685	-2.0%	\$354,970	-3.5%	\$190	-0.2%	82	10,403	27,446	8,375	4.1	95.5%
YTD:	19,262	5.3%	\$7,971,490,490	1.5%	\$413,845	-3.6%	\$349,999	-3.0%	\$187	-1.6%	81	30,902	27,532	23,755		94.8%
Townhouse	203	16.0%	\$77,927,964	6.3%	\$383,882	-8.3%	\$359,900	-12.0%	\$210	-6.8%	80	362	940	240	5.2	95.3%
YTD:	474	3.0%	\$185,752,848	1.7%	\$391,884	-1.3%	\$365,000	-6.2%	\$211	-2.7%	87	1,102	907	642		94.9%
Condominium	40	-49.4%	\$24,789,044	-39.9%	\$619,726	18.8%	\$549,900	10.0%	\$355	7.7%	84	196	596	58	10.4	95.1%
YTD:	112	-30.9%	\$59,802,617	-31.2%	\$533,952	-0.5%	\$485,000	3.3%	\$314	-5.7%	88	507	574	156		93.7%

* Closed Sale counts for most recent 3 months are Preliminary.

Trend Analysis By State: Texas

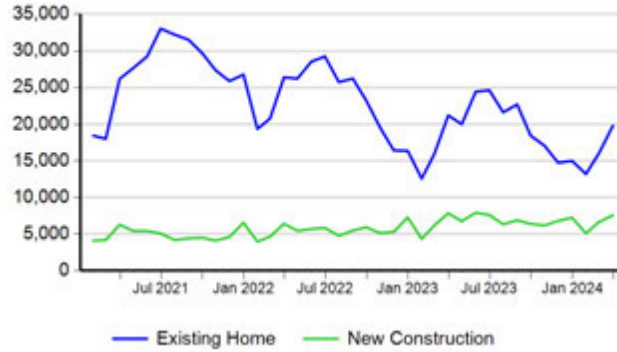
Residential, All (New and Existing)

Monthly Units Sold



Single Family, New vs. Existing

Monthly Units Sold



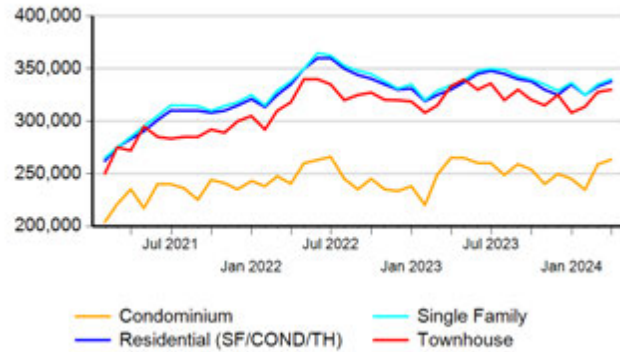
COND/TH, All (New and Existing)

Monthly Units Sold



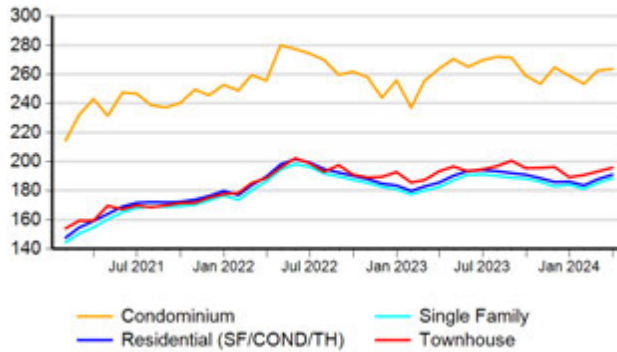
All (New and Existing) Construction

Median Sale Price



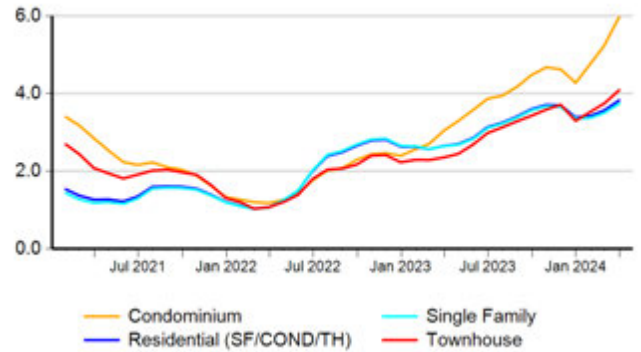
All (New and Existing) Construction

Average Close Price PSF



All (New and Existing) Construction

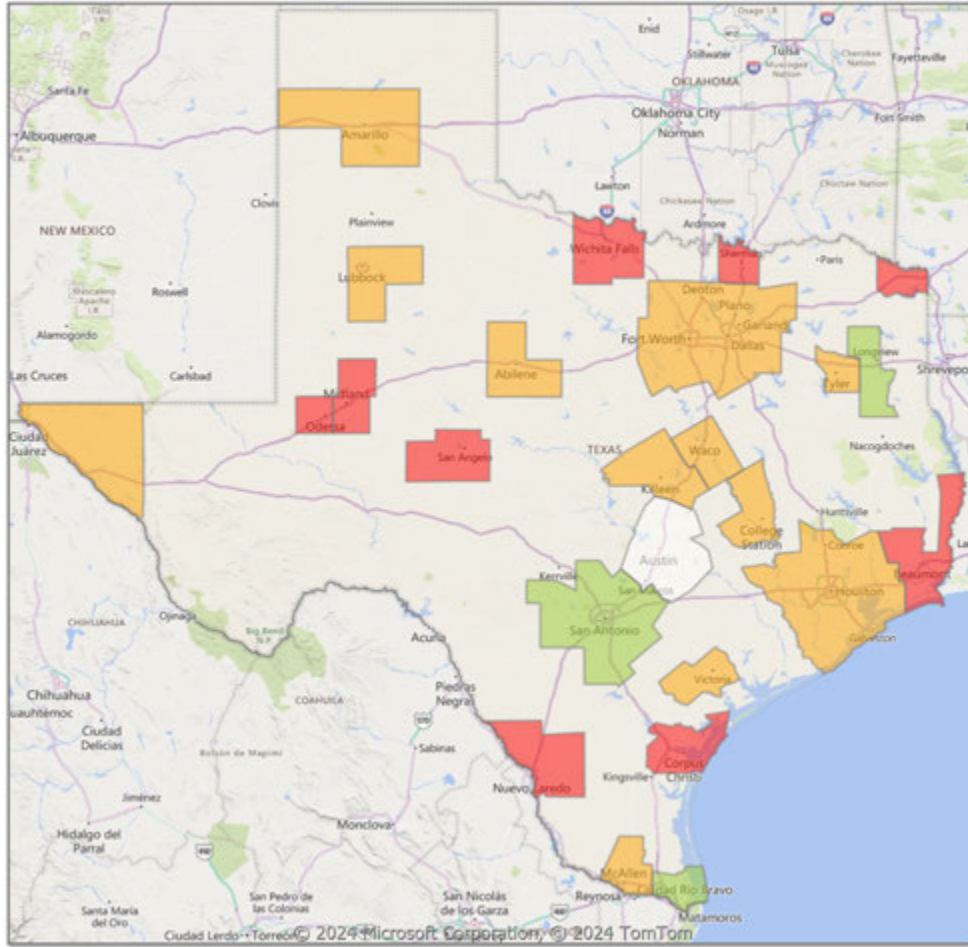
Months Inventory



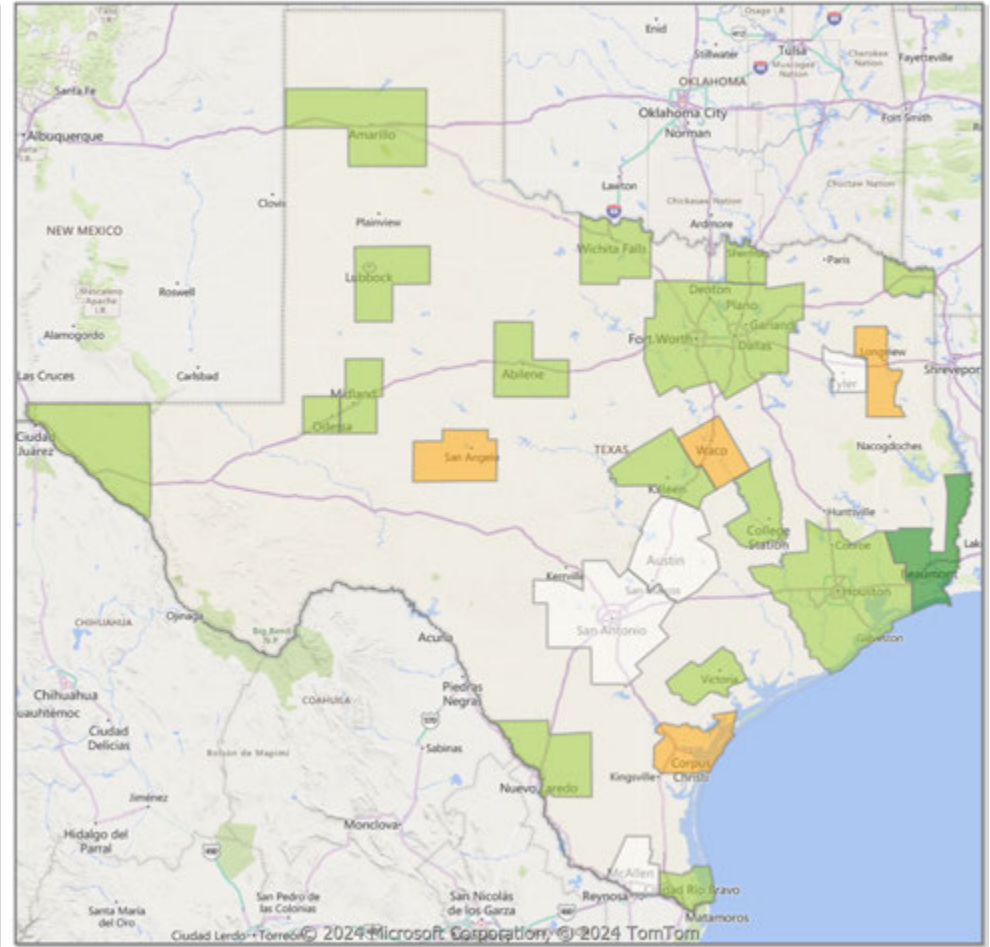
* Closed Sale counts for most recent 3 months are Preliminary.

Comparison By Metropolitan Statistical Area in Texas

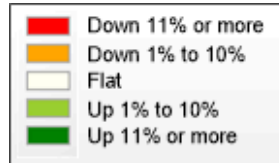
Residential* Closed Sales YoY Percentage Change



Residential* Avg Close Price Per SqFt YoY Percentage Change

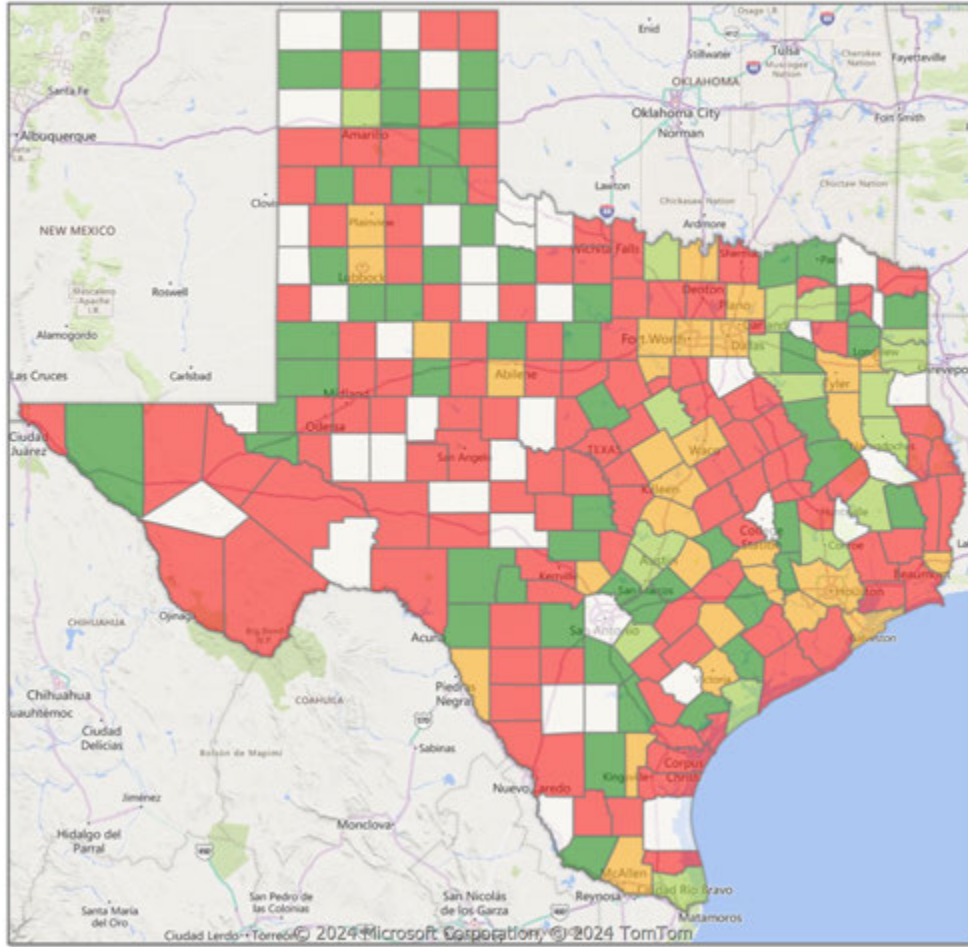


* Residential includes Single Family, Condominium and Townhouse.

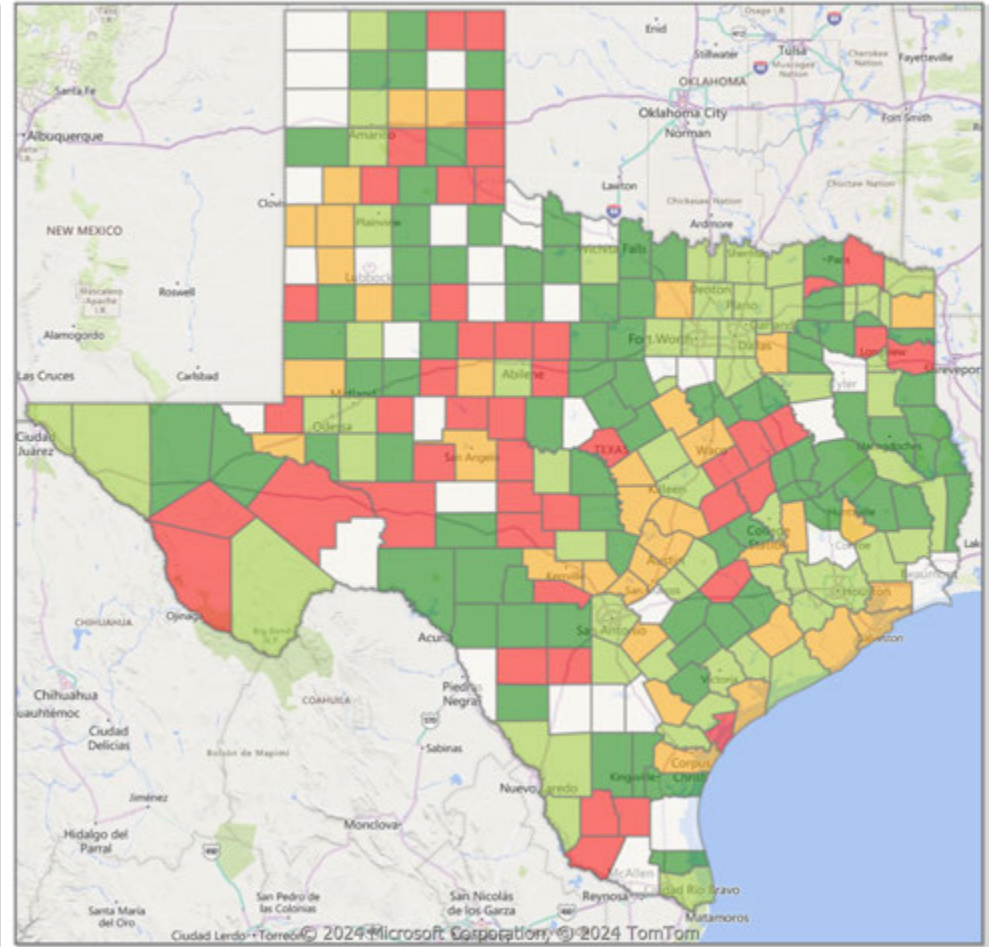


Comparison By County in Texas

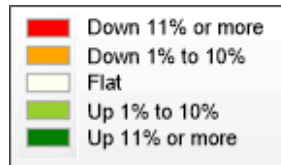
**Residential* Closed Sales
YoY Percentage Change**



**Residential* Avg Close Price Per SqFt
YoY Percentage Change**



* Residential includes Single Family, Condominium and Townhouse.



Market Analysis By Metropolitan Statistical Area: Lubbock

Property Type	Closed Sales*	YoY%	Dollar Volume	YoY%	Average Price	YoY%	Median Price	YoY%	Price/Sqft	YoY%	DOM	New Listings	Active Listings	Pending Sales	Months Inventory	Close To OLP
All(New and Existing)																
Residential (SF/COND/TH)	394	-7.5%	\$112,638,844	-5.3%	\$285,885	2.4%	\$250,000	4.2%	\$139	1.2%	55	820	1,367	538	3.6	96.4%
YTD:	1,008	1.7%	\$284,948,684	4.1%	\$282,687	2.4%	\$236,200	-0.8%	\$137	1.5%	52	2,321	1,351	1,333		95.9%
Single Family	379	-9.3%	\$109,924,278	-6.4%	\$290,038	3.2%	\$252,245	5.1%	\$140	1.3%	54	796	1,306	518	3.5	96.6%
YTD:	982	1.8%	\$280,118,180	4.7%	\$285,253	2.9%	\$239,900	0.0%	\$137	1.5%	51	2,244	1,283	1,289		95.9%
Townhouse	14	133.3%	\$2,691,850	106.8%	\$192,275	-11.4%	\$189,500	-15.7%	\$137	-1.7%	84	19	51	18	6.1	93.6%
YTD:	21	10.5%	\$4,143,750	4.6%	\$197,321	-5.4%	\$190,000	-7.3%	\$134	2.6%	98	62	58	37		93.5%
Condominium	1	-50.0%	\$85,000	-60.5%	\$85,000	-20.9%	\$85,000	-20.9%	\$87	-13.6%	70	5	10	2	6.3	87.6%
YTD:	5	-28.6%	\$735,500	-67.4%	\$147,100	-54.4%	\$126,500	-41.2%	\$136	1.5%	27	15	9	7		94.2%

* Closed Sale counts for most recent 3 months are Preliminary.

Existing Home

Residential (SF/COND/TH)	281	-14.9%	\$77,685,134	-9.1%	\$276,460	6.8%	\$240,000	10.5%	\$131	1.8%	51	635	1,016	399	3.4	95.8%
YTD:	725	-6.0%	\$195,831,496	-1.7%	\$270,112	4.5%	\$225,000	4.7%	\$128	1.1%	49	1,724	973	959		95.1%
Single Family	275	-14.6%	\$76,589,718	-8.7%	\$278,508	6.9%	\$240,000	9.8%	\$131	1.9%	52	618	984	388	3.4	95.9%
YTD:	712	-4.7%	\$193,321,628	0.0%	\$271,519	4.9%	\$225,000	4.7%	\$128	1.1%	50	1,672	937	936		95.1%
Townhouse	5	-16.7%	\$1,032,950	-20.6%	\$206,590	-4.8%	\$185,000	-17.7%	\$138	-0.7%	15	12	23	9	7.3	93.3%
YTD:	7	-58.8%	\$1,523,950	-57.2%	\$217,707	3.9%	\$203,000	-3.3%	\$130	0.7%	29	37	28	16		94.4%
Condominium	1	-50.0%	\$85,000	-60.5%	\$85,000	-20.9%	\$85,000	-20.9%	\$87	-13.6%	70	5	9	2	5.7	87.6%
YTD:	5	-28.6%	\$735,500	-67.4%	\$147,100	-54.4%	\$126,500	-41.2%	\$136	1.5%	27	15	8	7		94.2%

* Closed Sale counts for most recent 3 months are Preliminary.

New Construction

Residential (SF/COND/TH)	113	17.7%	\$34,943,419	4.2%	\$309,234	-11.5%	\$265,950	-11.1%	\$160	-5.1%	66	185	351	139	3.9	98.0%
YTD:	284	29.1%	\$89,371,256	20.0%	\$314,688	-7.0%	\$263,470	-11.1%	\$159	-2.5%	59	597	377	374		97.9%
Single Family	104	8.3%	\$33,329,487	-0.6%	\$320,476	-8.3%	\$272,863	-8.7%	\$162	-3.8%	61	178	322	130	3.8	98.4%
YTD:	270	23.9%	\$86,785,150	17.2%	\$321,426	-5.4%	\$269,990	-9.1%	\$161	-1.8%	55	572	346	353		98.1%
Townhouse	9	100.0%	\$1,658,900	100.0%	\$184,322	100.0%	\$190,000	100.0%	\$136	100.0%	123	7	28	9	5.4	93.8%
YTD:	14	600.0%	\$2,619,800	554.1%	\$187,129	-6.6%	\$189,500	-5.4%	\$136	-6.1%	133	25	30	21		93.1%
Condominium	-	0.0%	-	0.0%	-	0.0%	-	0.0%	-	0.0%	-	-	1	0	-	0.0%
YTD:	-	0.0%	-	0.0%	-	0.0%	-	0.0%	-	0.0%	-	0	1	0		0.0%

* Closed Sale counts for most recent 3 months are Preliminary.

Trend Analysis By Metropolitan Statistical Area: Lubbock

Residential, All (New and Existing)



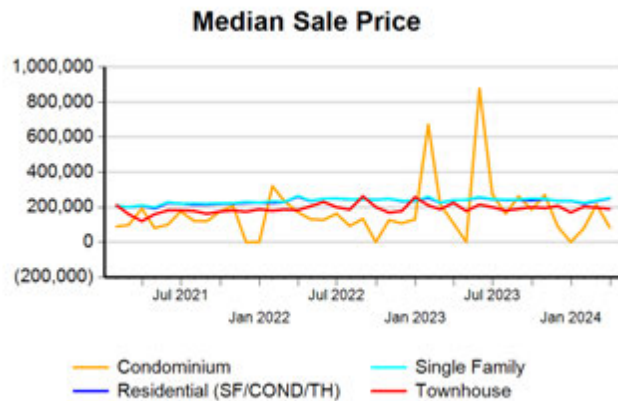
Single Family, New vs. Existing



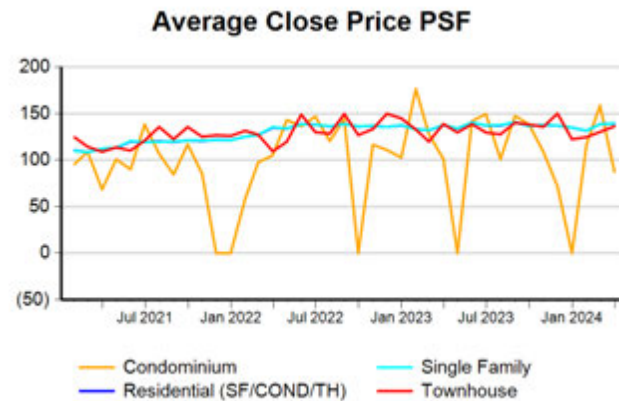
COND/TH, All (New and Existing)



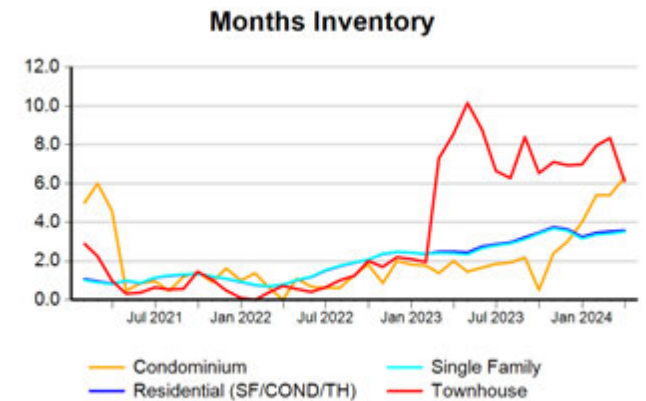
All (New and Existing) Construction



All (New and Existing) Construction



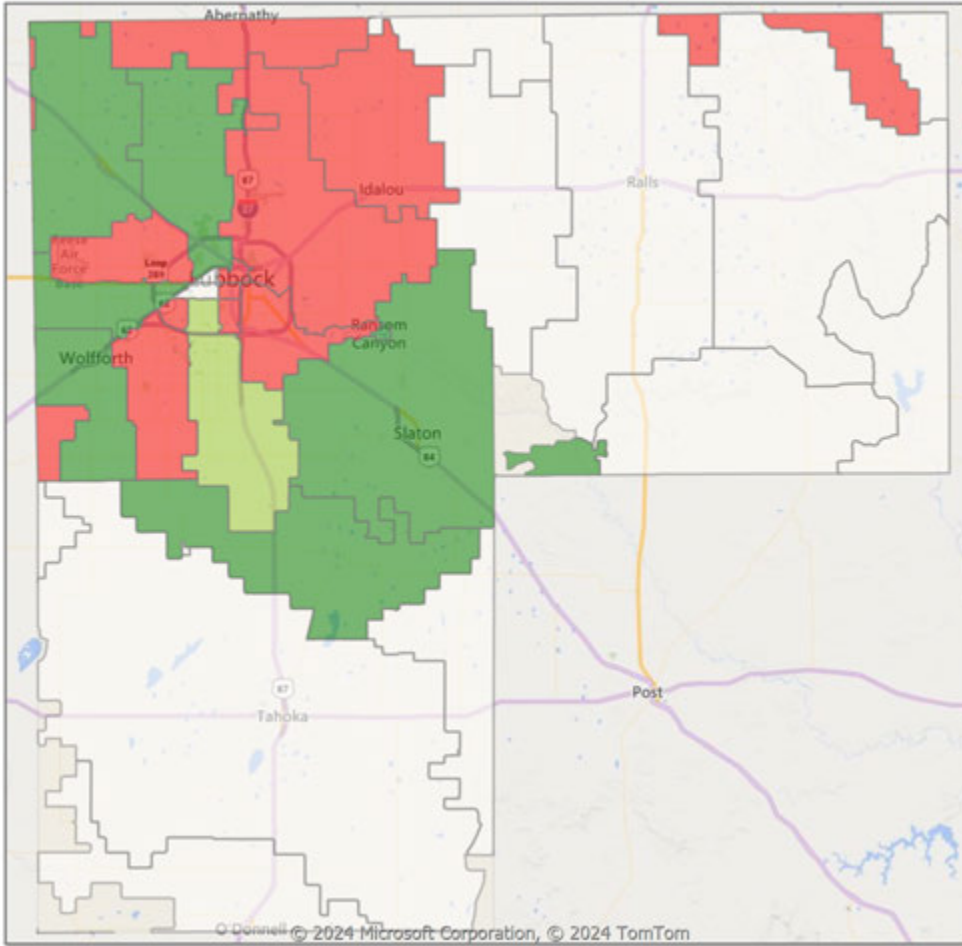
All (New and Existing) Construction



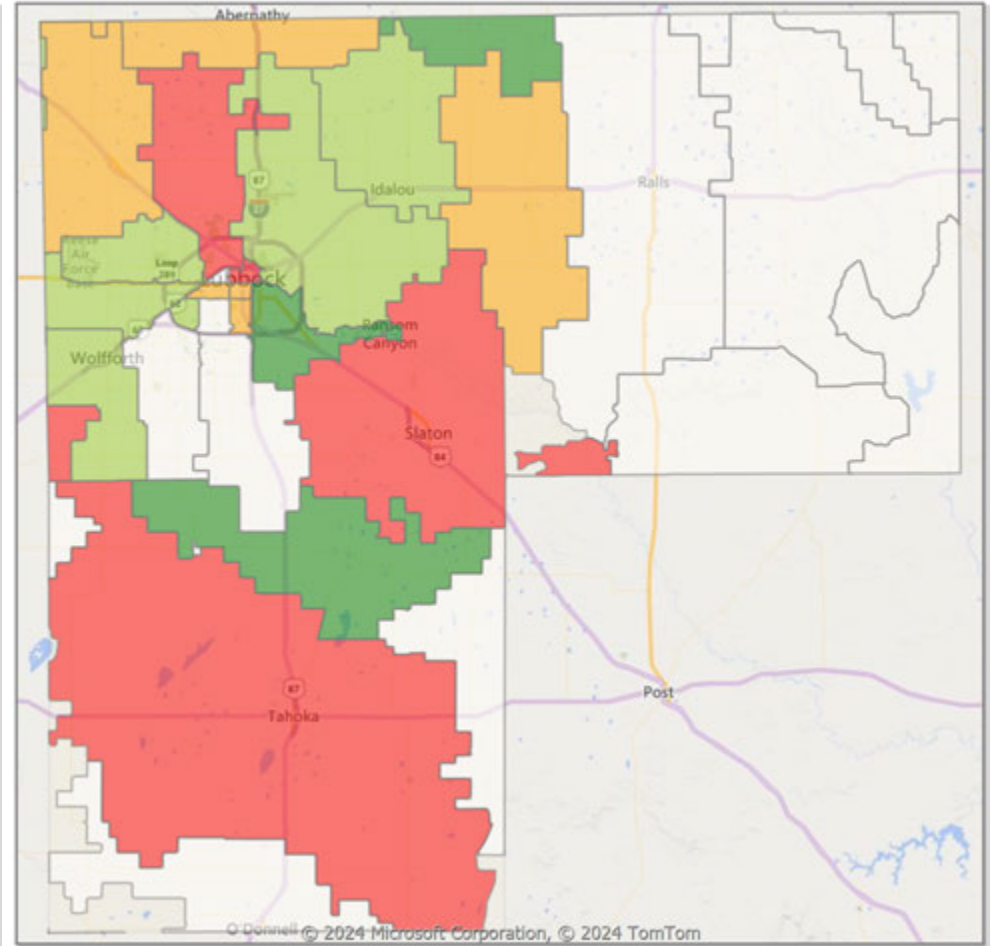
* Closed Sale counts for most recent 3 months are Preliminary.

Comparison By Zip Code* in Lubbock MSA

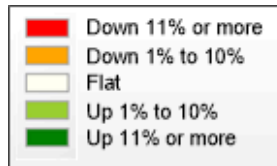
Residential Closed Sales
YoY Percentage Change**



Residential Avg Close Price Per SqFt
YoY Percentage Change**

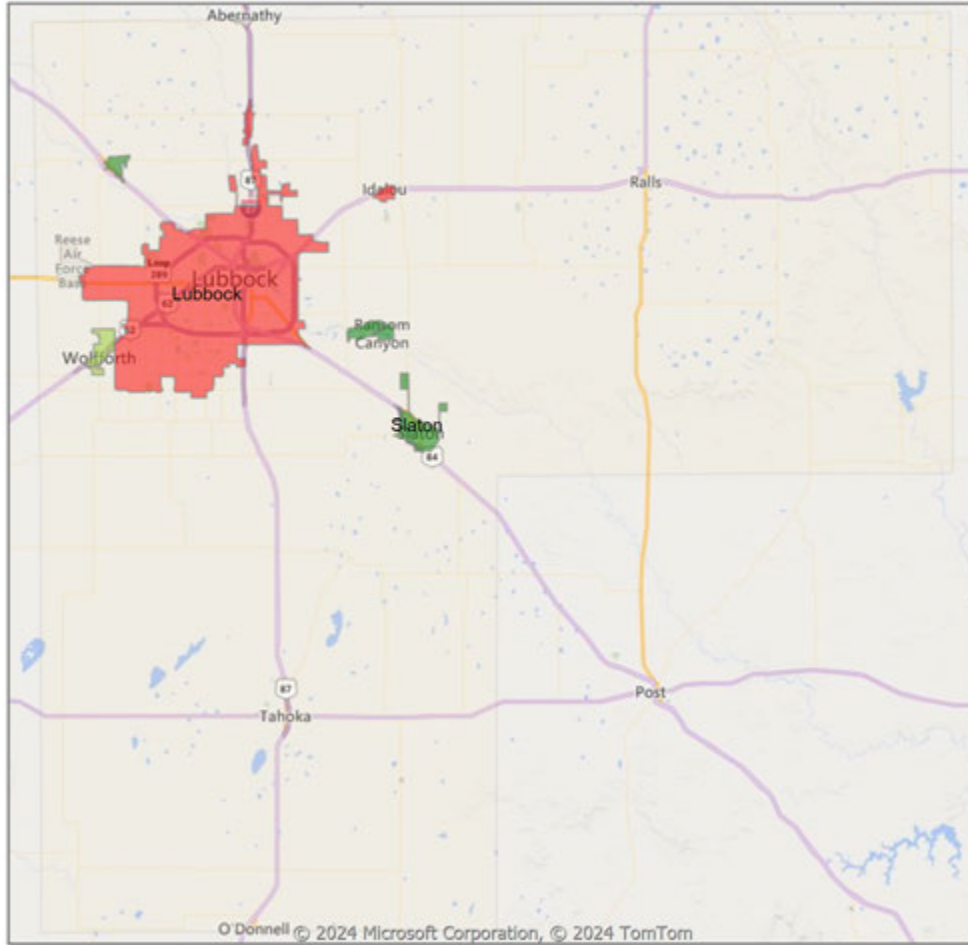


* US Census Zip Code Tabulation Area
** Residential includes Single Family, Condominium and Townhouse.

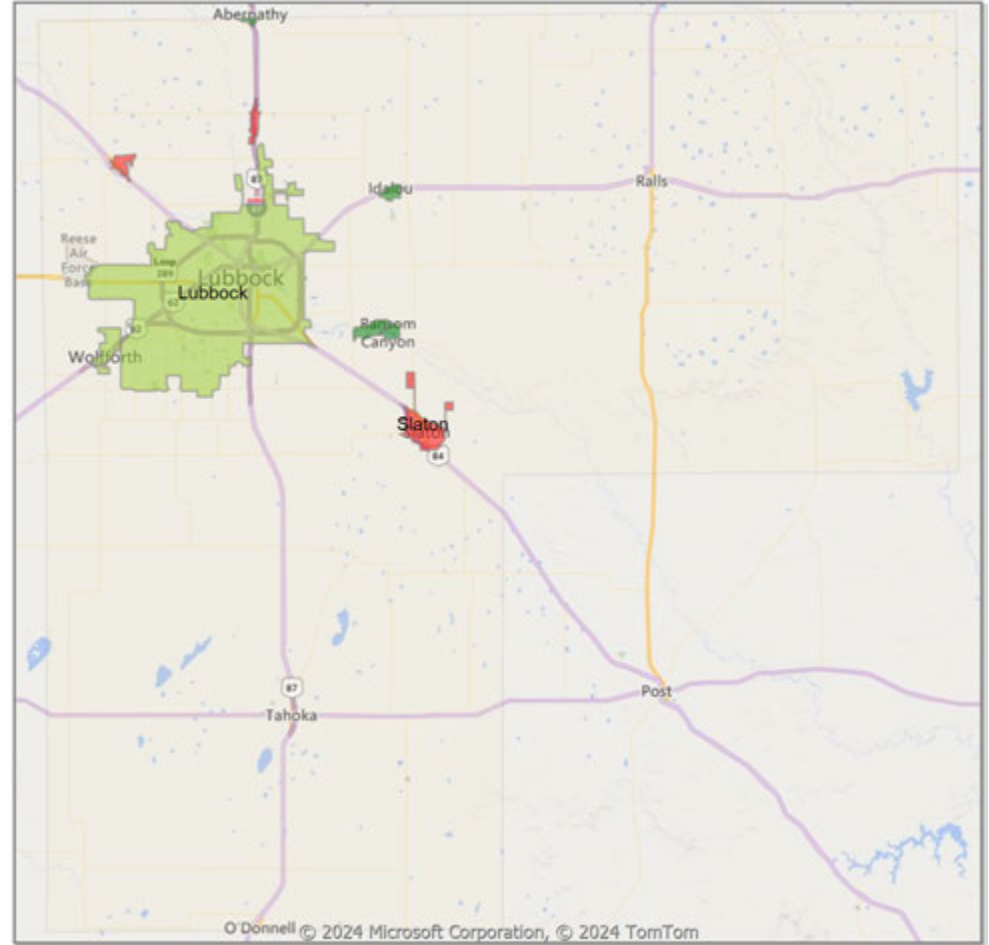


Comparison By Local Market Area* in Lubbock MSA

Residential Closed Sales
YoY Percentage Change**

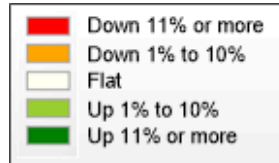


Residential Avg Close Price Per SqFt
YoY Percentage Change**



* Census Place Group

** Residential includes Single Family, Condominium and Townhouse.



Market Analysis By County: Hockley County

Property Type	Closed Sales*	YoY%	Dollar Volume	YoY%	Average Price	YoY%	Median Price	YoY%	Price/Sqft	YoY%	DOM	New Listings	Active Listings	Pending Sales	Months Inventory	Close To OLP
All(New and Existing)																
Residential (SF/COND/TH)	24	41.2%	\$4,662,686	31.7%	\$194,279	-6.7%	\$177,450	-6.6%	\$96	-9.7%	65	35	65	32	4.0	91.7%
YTD:	52	30.0%	\$10,673,896	23.4%	\$205,267	-5.1%	\$180,000	-5.1%	\$105	5.8%	74	90	73	76		93.6%
Single Family	24	41.2%	\$4,662,686	31.7%	\$194,279	-6.7%	\$177,450	-6.6%	\$96	-9.7%	65	35	65	32	4.0	91.7%
YTD:	52	30.0%	\$10,673,896	23.4%	\$205,267	-5.1%	\$180,000	-5.1%	\$105	5.8%	74	90	72	76		93.6%
Townhouse	-	0.0%	-	0.0%	-	0.0%	-	0.0%	-	0.0%	-	-	-	-	-	0.0%
YTD:	-	0.0%	-	0.0%	-	0.0%	-	0.0%	-	0.0%	-	-	-	-	-	0.0%
Condominium	-	0.0%	-	0.0%	-	0.0%	-	0.0%	-	0.0%	-	-	-	-	-	0.0%
YTD:	-	0.0%	-	0.0%	-	0.0%	-	0.0%	-	0.0%	-	-	1	-	-	0.0%
Existing Home																
Residential (SF/COND/TH)	22	29.4%	\$4,161,736	17.6%	\$189,170	-9.1%	\$172,000	-9.5%	\$92	-13.4%	69	32	61	29	4.0	90.9%
YTD:	46	18.0%	\$9,243,936	8.8%	\$200,955	-7.8%	\$179,950	-5.3%	\$100	0.7%	75	83	68	68		93.0%
Single Family	22	29.4%	\$4,161,736	17.6%	\$189,170	-9.1%	\$172,000	-9.5%	\$92	-13.4%	69	32	61	29	4.0	90.9%
YTD:	46	18.0%	\$9,243,936	8.8%	\$200,955	-7.8%	\$179,950	-5.3%	\$100	0.7%	75	83	68	68		93.0%
Townhouse	-	0.0%	-	0.0%	-	0.0%	-	0.0%	-	0.0%	-	-	-	-	-	0.0%
YTD:	-	0.0%	-	0.0%	-	0.0%	-	0.0%	-	0.0%	-	-	-	-	-	0.0%
Condominium	-	0.0%	-	0.0%	-	0.0%	-	0.0%	-	0.0%	-	-	-	-	-	0.0%
YTD:	-	0.0%	-	0.0%	-	0.0%	-	0.0%	-	0.0%	-	-	1	-	-	0.0%
New Construction																
Residential (SF/COND/TH)	2	100.0%	\$500,950	100.0%	\$250,475	100.0%	\$250,475	100.0%	\$139	100.0%	25	3	4	3	4.4	100.0%
YTD:	6	500.0%	\$1,429,960	859.7%	\$238,327	60.0%	\$245,975	65.1%	\$143	43.8%	67	7	4	8		98.3%
Single Family	2	100.0%	\$500,950	100.0%	\$250,475	100.0%	\$250,475	100.0%	\$139	100.0%	25	3	4	3	4.4	100.0%
YTD:	6	500.0%	\$1,429,960	859.7%	\$238,327	60.0%	\$245,975	65.1%	\$143	43.8%	67	7	4	8		98.3%
Townhouse	-	0.0%	-	0.0%	-	0.0%	-	0.0%	-	0.0%	-	-	-	-	-	0.0%
YTD:	-	0.0%	-	0.0%	-	0.0%	-	0.0%	-	0.0%	-	-	-	-	-	0.0%
Condominium	-	0.0%	-	0.0%	-	0.0%	-	0.0%	-	0.0%	-	-	-	-	-	0.0%
YTD:	-	0.0%	-	0.0%	-	0.0%	-	0.0%	-	0.0%	-	-	-	-	-	0.0%

* Closed Sale counts for most recent 3 months are Preliminary.

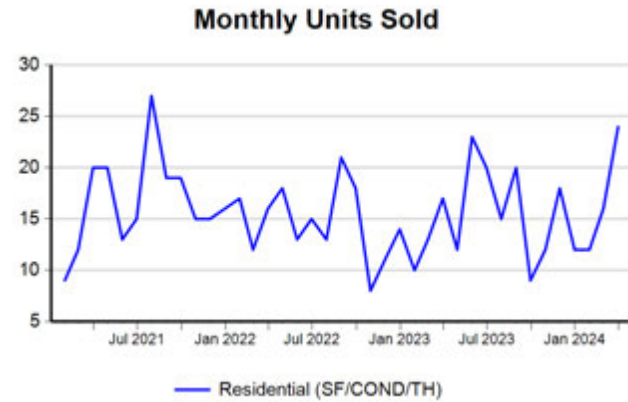
Market Analysis By County: Lubbock County

Property Type	Closed Sales*	YoY%	Dollar Volume	YoY%	Average Price	YoY%	Median Price	YoY%	Price/Sqft	YoY%	DOM	New Listings	Active Listings	Pending Sales	Months Inventory	Close To OLP
All(New and Existing)																
Residential (SF/COND/TH)	387	-7.6%	\$110,681,753	-5.8%	\$285,999	2.0%	\$250,000	4.2%	\$140	0.9%	56	803	1,313	523	3.5	96.4%
YTD:	988	1.4%	\$277,749,668	2.5%	\$281,123	1.1%	\$236,200	-1.6%	\$137	0.9%	52	2,263	1,301	1,309		95.9%
Single Family	372	-9.5%	\$107,968,481	-6.9%	\$290,238	2.9%	\$252,500	5.2%	\$140	0.9%	55	779	1,252	503	3.4	96.5%
YTD:	962	1.4%	\$272,919,377	3.1%	\$283,700	1.7%	\$239,900	0.0%	\$137	1.0%	51	2,186	1,233	1,265		95.9%
Townhouse	14	133.3%	\$2,691,850	106.8%	\$192,275	-11.4%	\$189,500	-15.7%	\$137	-1.7%	84	19	51	18	6.1	93.6%
YTD:	21	10.5%	\$4,143,750	4.6%	\$197,321	-5.4%	\$190,000	-7.3%	\$134	2.6%	98	62	58	37		93.5%
Condominium	1	-50.0%	\$85,000	-60.5%	\$85,000	-20.9%	\$85,000	-20.9%	\$87	-13.6%	70	5	10	2	6.3	87.6%
YTD:	5	-16.7%	\$735,500	-64.5%	\$147,100	-57.4%	\$126,500	-41.8%	\$136	-8.0%	27	15	9	7		94.2%
Existing Home																
Residential (SF/COND/TH)	275	-15.1%	\$76,324,041	-9.5%	\$277,542	6.7%	\$240,000	9.7%	\$132	1.4%	52	619	973	385	3.4	95.8%
YTD:	709	-6.1%	\$190,700,884	-3.1%	\$268,972	3.2%	\$225,000	3.9%	\$129	0.4%	49	1,673	933	937		95.1%
Single Family	269	-14.9%	\$75,229,425	-9.1%	\$279,663	6.7%	\$241,000	9.6%	\$132	1.4%	52	602	941	374	3.3	95.8%
YTD:	696	-4.9%	\$188,192,338	-1.6%	\$270,391	3.5%	\$225,000	3.8%	\$129	0.5%	50	1,621	896	914		95.1%
Townhouse	5	-16.7%	\$1,032,950	-20.6%	\$206,590	-4.8%	\$185,000	-17.7%	\$138	-0.7%	15	12	23	9	7.3	93.3%
YTD:	7	-58.8%	\$1,523,950	-57.2%	\$217,707	3.9%	\$203,000	-3.3%	\$130	0.7%	29	37	28	16		94.4%
Condominium	1	-50.0%	\$85,000	-60.5%	\$85,000	-20.9%	\$85,000	-20.9%	\$87	-13.6%	70	5	9	2	5.7	87.6%
YTD:	5	-16.7%	\$735,500	-64.5%	\$147,100	-57.4%	\$126,500	-41.8%	\$136	-8.0%	27	15	8	7		94.2%
New Construction																
Residential (SF/COND/TH)	112	17.9%	\$34,347,376	3.7%	\$306,673	-12.0%	\$264,710	-11.4%	\$159	-5.2%	66	184	340	138	3.8	98.0%
YTD:	280	27.9%	\$87,300,964	17.9%	\$311,789	-7.8%	\$262,155	-11.4%	\$159	-2.6%	59	590	368	372		97.8%
Single Family	103	8.4%	\$32,732,967	-1.2%	\$317,796	-8.9%	\$270,735	-9.4%	\$162	-4.0%	61	177	311	129	3.7	98.4%
YTD:	266	22.6%	\$84,714,598	15.1%	\$318,476	-6.1%	\$267,420	-9.8%	\$160	-2.0%	55	565	336	351		98.1%
Townhouse	9	100.0%	\$1,658,900	100.0%	\$184,322	100.0%	\$190,000	100.0%	\$136	100.0%	123	7	28	9	5.4	93.8%
YTD:	14	600.0%	\$2,619,800	554.1%	\$187,129	-6.6%	\$189,500	-5.4%	\$136	-6.1%	133	25	30	21		93.1%
Condominium	-	0.0%	-	0.0%	-	0.0%	-	0.0%	-	0.0%	-	-	1	-	-	0.0%
YTD:	-	0.0%	-	0.0%	-	0.0%	-	0.0%	-	0.0%	-	-	1	-		0.0%

* Closed Sale counts for most recent 3 months are Preliminary.

Trend Analysis By County: Hockley County

Residential, All (New and Existing)



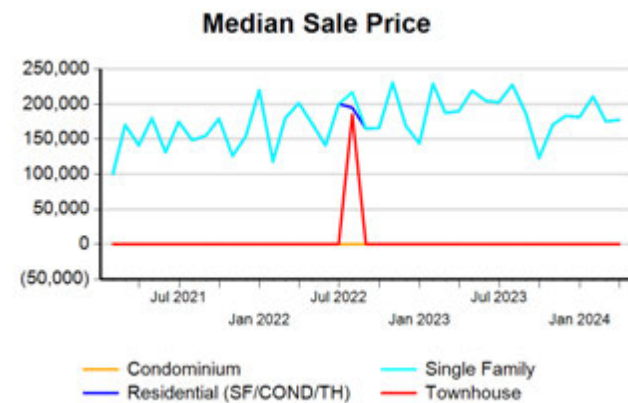
Single Family, New vs. Existing



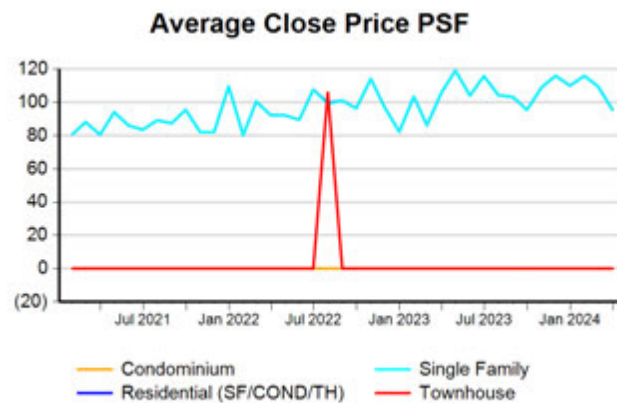
COND/TH, All (New and Existing)



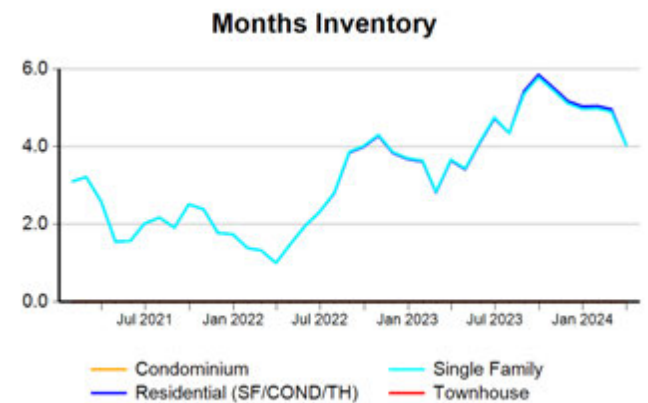
All (New and Existing) Construction



All (New and Existing) Construction



All (New and Existing) Construction



* Closed Sale counts for most recent 3 months are Preliminary.

Trend Analysis By County: Lubbock County

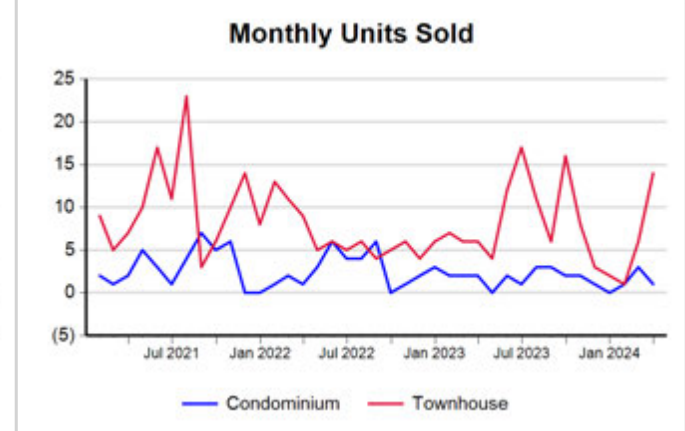
Residential, All (New and Existing)



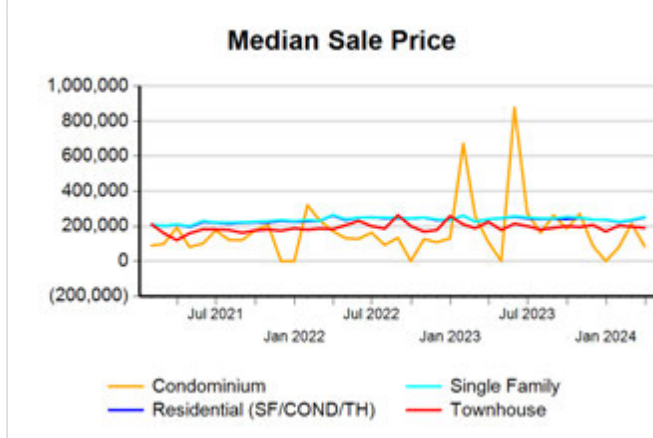
Single Family, New vs. Existing



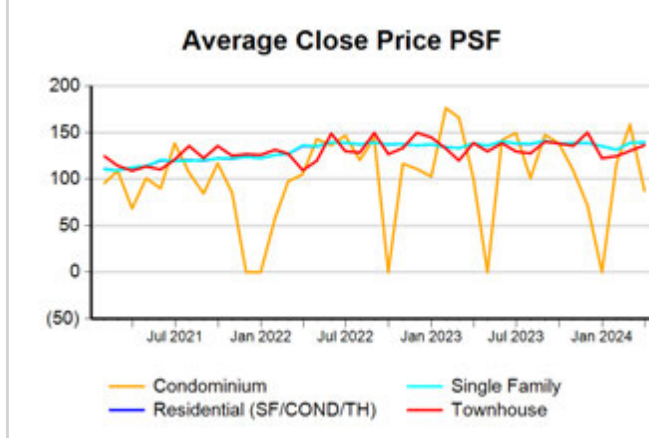
COND/TH, All (New and Existing)



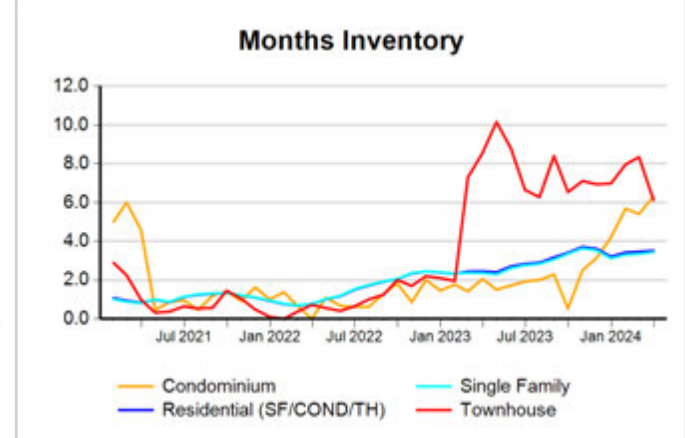
All (New and Existing) Construction



All (New and Existing) Construction



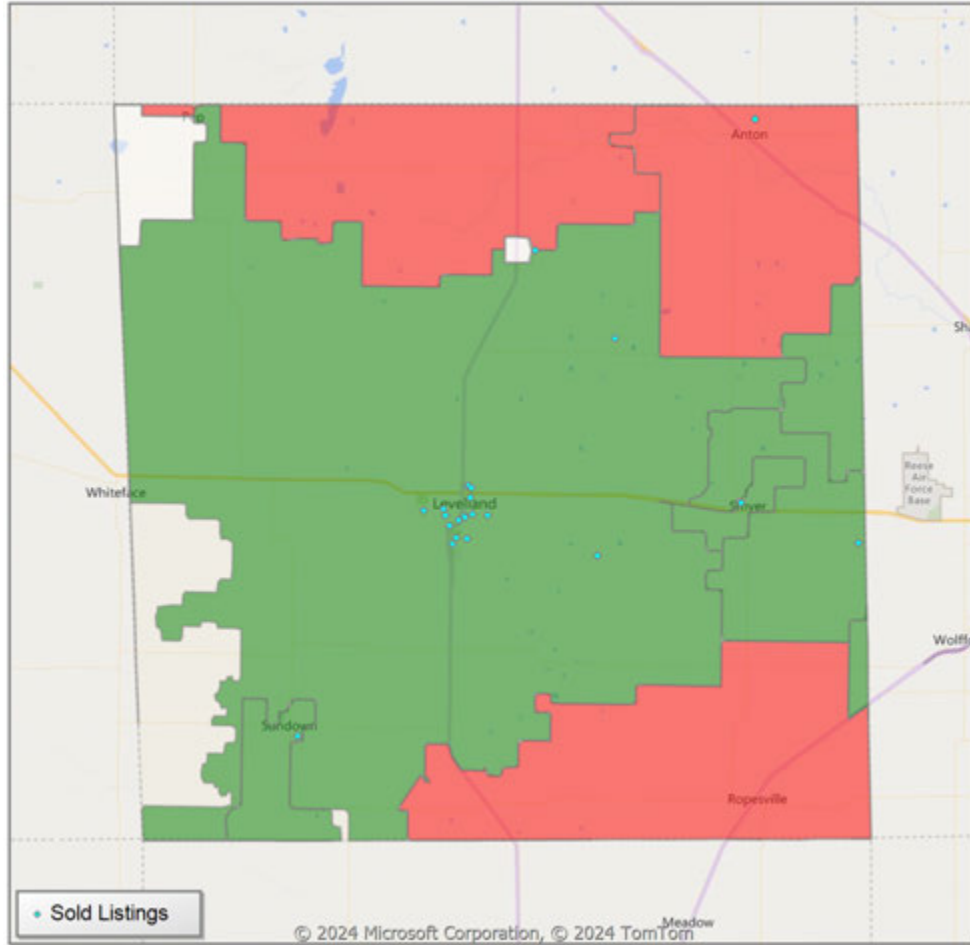
All (New and Existing) Construction



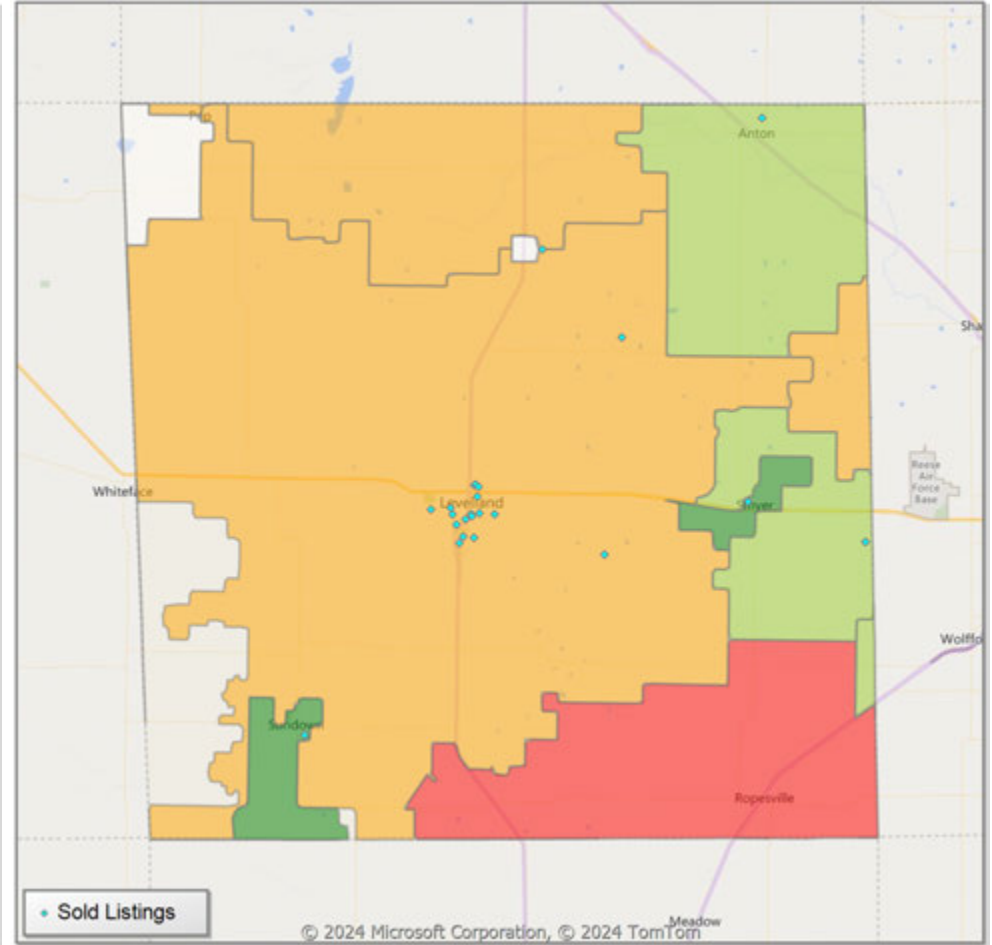
* Closed Sale counts for most recent 3 months are Preliminary.

Comparison By Zip Code* in Hockley County

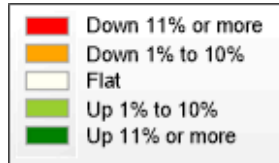
Residential Closed Sales
YoY Percentage Change**



Residential Avg Close Price Per SqFt
YoY Percentage Change**

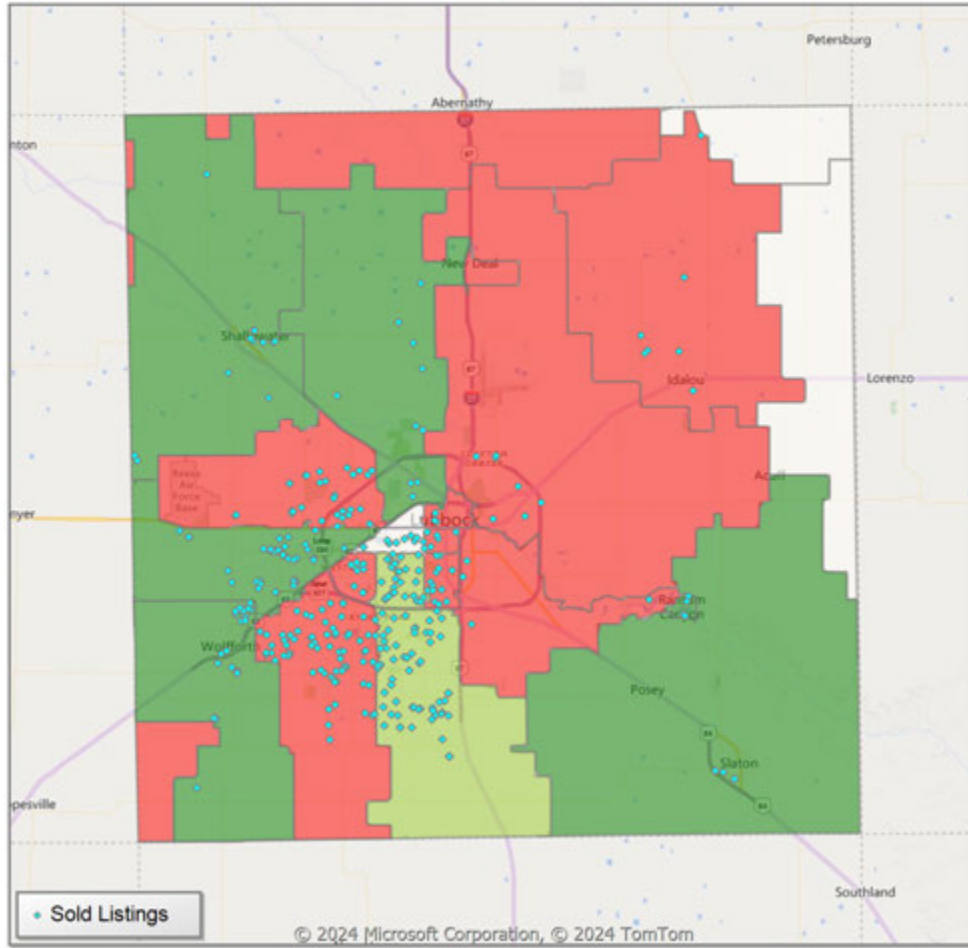


* US Census Zip Code Tabulation Area
** Residential includes Single Family, Condominium and Townhouse.

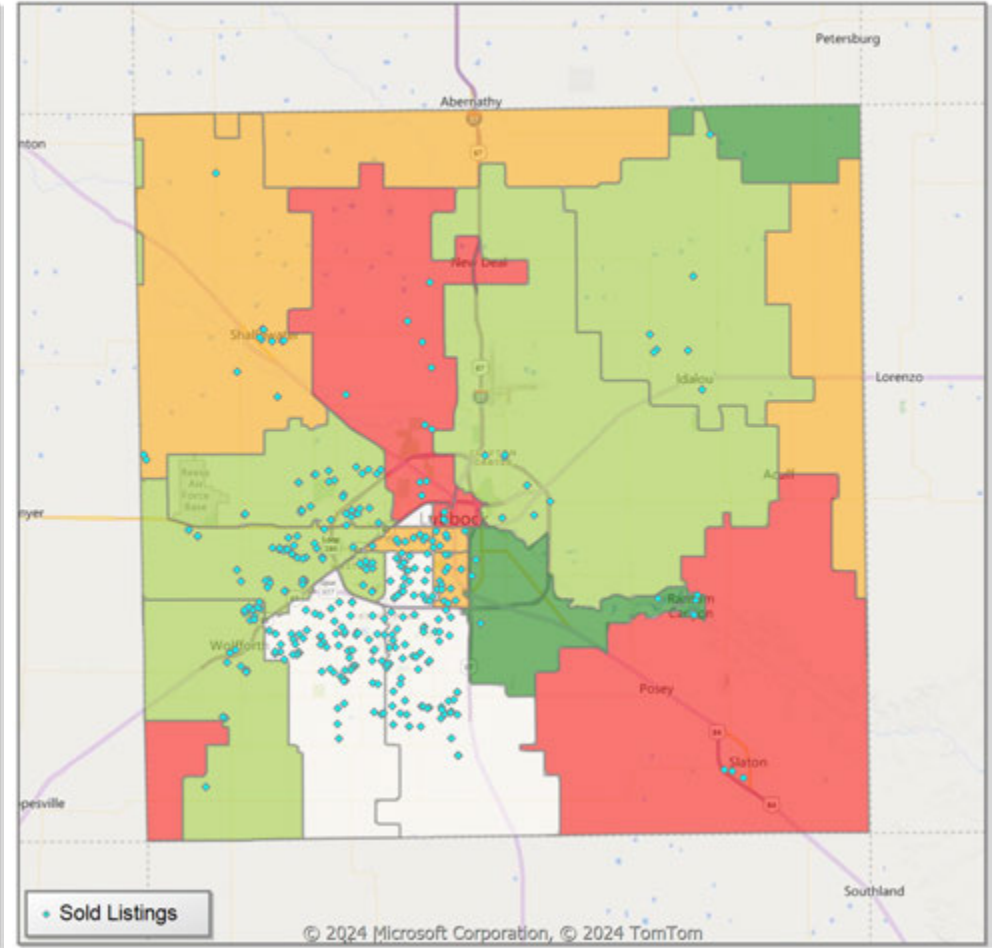


Comparison By Zip Code* in Lubbock County

Residential Closed Sales
YoY Percentage Change**

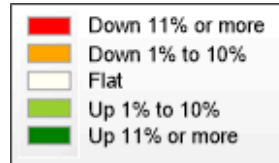


Residential Avg Close Price Per SqFt
YoY Percentage Change**



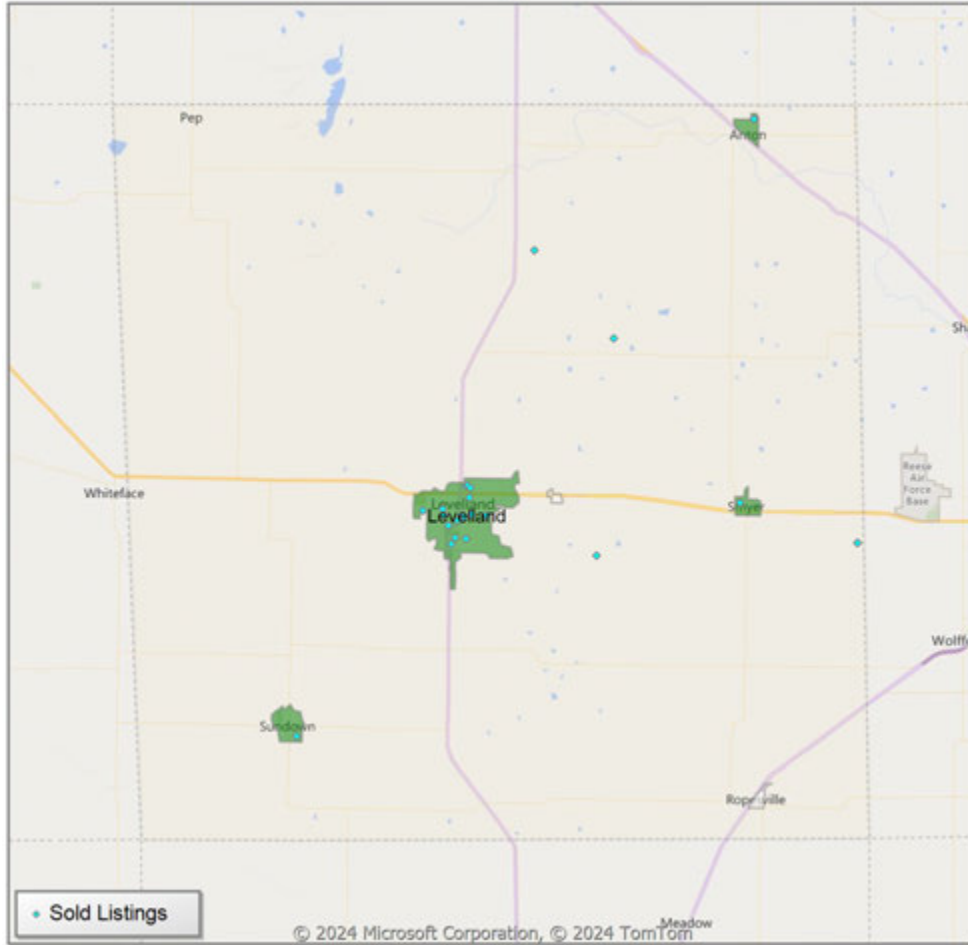
* US Census Zip Code Tabulation Area

** Residential includes Single Family, Condominium and Townhouse.

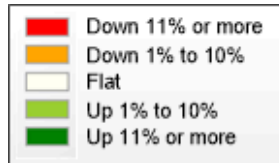
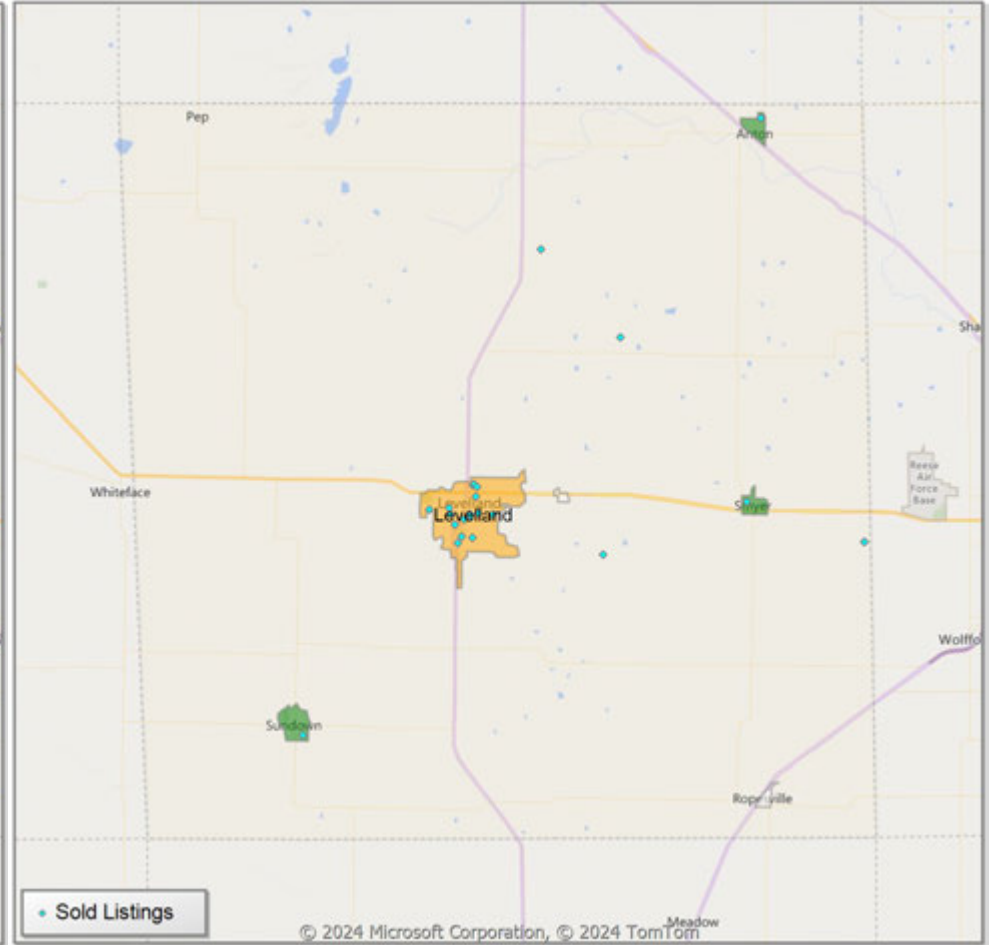


Comparison By Local Market Area* in Hockley County

Residential Closed Sales
YoY Percentage Change**



Residential Avg Close Price Per SqFt
YoY Percentage Change**

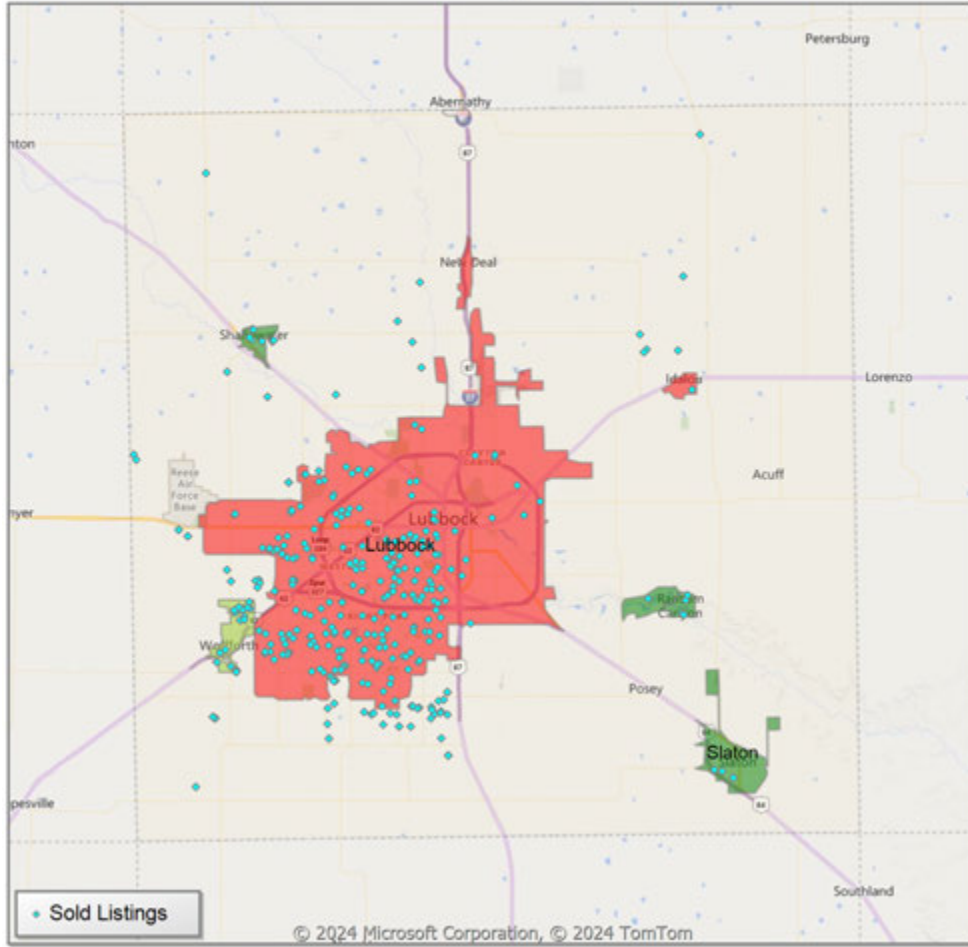


* Census Place Group

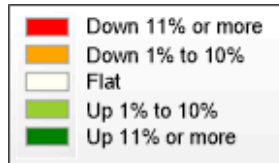
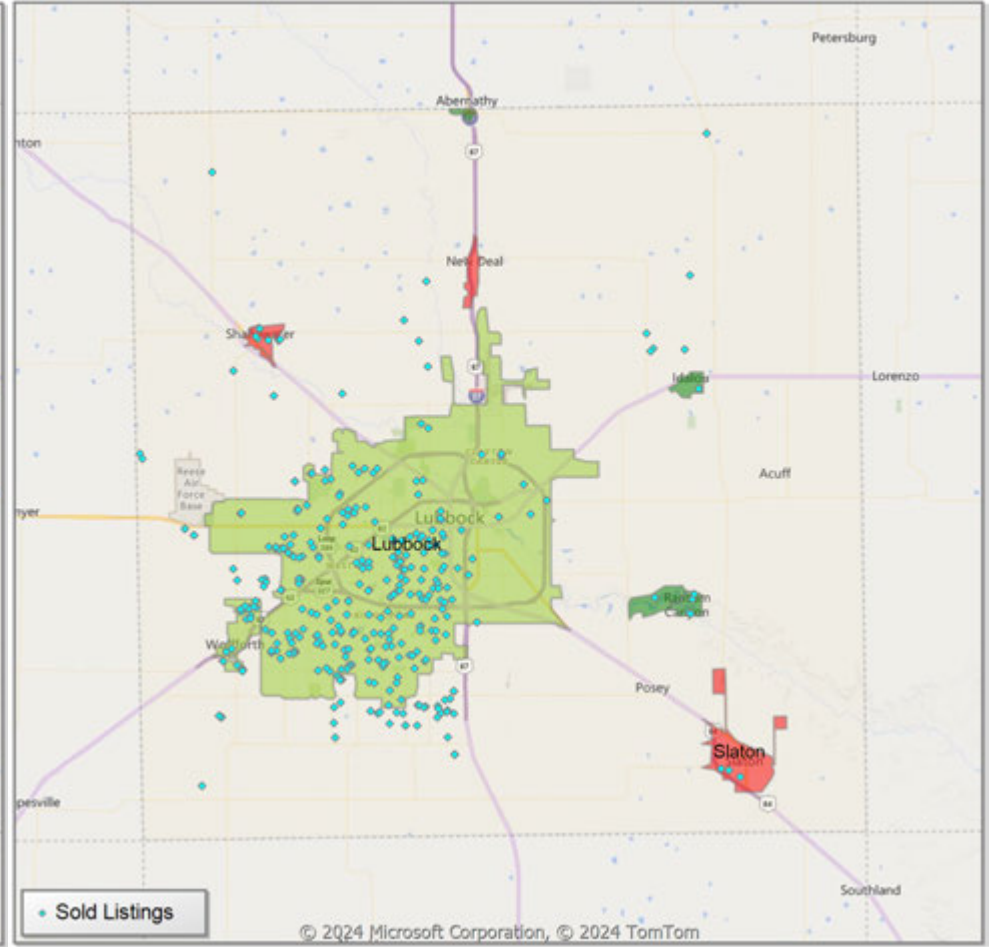
** Residential includes Single Family, Condominium and Townhouse.

Comparison By Local Market Area* in Lubbock County

Residential Closed Sales
YoY Percentage Change**



Residential Avg Close Price Per SqFt
YoY Percentage Change**



* Census Place Group

** Residential includes Single Family, Condominium and Townhouse.

Market Analysis By Local Market Area*: Abernathy

Property Type	Closed Sales**	YoY%	Dollar Volume	YoY%	Average Price	YoY%	Median Price	YoY%	Price/Sqft	YoY%	DOM	New Listings	Active Listings	Pending Sales	Months Inventory	Close To OLP
All(New and Existing)																
Residential (SF/COND/TH)	1	0.0%	\$200,000	-9.1%	\$200,000	-9.1%	\$200,000	-9.1%	\$127	56.2%	-	4	12	-	6.3	100.0%
YTD:	3	50.0%	\$538,000	28.1%	\$179,333	-14.6%	\$173,000	-17.6%	\$115	45.4%	18	12	9	3		98.6%
Single Family	1	0.0%	\$200,000	-9.1%	\$200,000	-9.1%	\$200,000	-9.1%	\$127	56.2%	-	4	12	-	6.3	100.0%
YTD:	3	50.0%	\$538,000	28.1%	\$179,333	-14.6%	\$173,000	-17.6%	\$115	45.4%	18	12	9	3		98.6%
Townhouse	-	0.0%	-	0.0%	-	0.0%	-	0.0%	-	0.0%	-	-	-	-	-	0.0%
YTD:	-	0.0%	-	0.0%	-	0.0%	-	0.0%	-	0.0%	-	-	-	-	-	0.0%
Condominium	-	0.0%	-	0.0%	-	0.0%	-	0.0%	-	0.0%	-	-	-	-	-	0.0%
YTD:	-	0.0%	-	0.0%	-	0.0%	-	0.0%	-	0.0%	-	-	-	-	-	0.0%
Existing Home																
Residential (SF/COND/TH)	1	0.0%	\$200,000	-9.1%	\$200,000	-9.1%	\$200,000	-9.1%	\$127	56.2%	-	4	12	-	6.3	100.0%
YTD:	3	50.0%	\$538,000	28.1%	\$179,333	-14.6%	\$173,000	-17.6%	\$115	45.4%	18	12	9	3		98.6%
Single Family	1	0.0%	\$200,000	-9.1%	\$200,000	-9.1%	\$200,000	-9.1%	\$127	56.2%	-	4	12	-	6.3	100.0%
YTD:	3	50.0%	\$538,000	28.1%	\$179,333	-14.6%	\$173,000	-17.6%	\$115	45.4%	18	12	9	3		98.6%
Townhouse	-	0.0%	-	0.0%	-	0.0%	-	0.0%	-	0.0%	-	-	-	-	-	0.0%
YTD:	-	0.0%	-	0.0%	-	0.0%	-	0.0%	-	0.0%	-	-	-	-	-	0.0%
Condominium	-	0.0%	-	0.0%	-	0.0%	-	0.0%	-	0.0%	-	-	-	-	-	0.0%
YTD:	-	0.0%	-	0.0%	-	0.0%	-	0.0%	-	0.0%	-	-	-	-	-	0.0%
New Construction																
Residential (SF/COND/TH)	-	0.0%	-	0.0%	-	0.0%	-	0.0%	-	0.0%	-	-	-	-	-	0.0%
YTD:	-	0.0%	-	0.0%	-	0.0%	-	0.0%	-	0.0%	-	-	-	-	-	0.0%
Single Family	-	0.0%	-	0.0%	-	0.0%	-	0.0%	-	0.0%	-	-	-	-	-	0.0%
YTD:	-	0.0%	-	0.0%	-	0.0%	-	0.0%	-	0.0%	-	-	-	-	-	0.0%
Townhouse	-	0.0%	-	0.0%	-	0.0%	-	0.0%	-	0.0%	-	-	-	-	-	0.0%
YTD:	-	0.0%	-	0.0%	-	0.0%	-	0.0%	-	0.0%	-	-	-	-	-	0.0%
Condominium	-	0.0%	-	0.0%	-	0.0%	-	0.0%	-	0.0%	-	-	-	-	-	0.0%
YTD:	-	0.0%	-	0.0%	-	0.0%	-	0.0%	-	0.0%	-	-	-	-	-	0.0%

* Local Market Area Code: 2; Type: Census Place Group
 ** Closed Sale counts for most recent 3 months are Preliminary.

Market Analysis By Local Market Area*: Anton

Property Type	Closed Sales**	YoY%	Dollar Volume	YoY%	Average Price	YoY%	Median Price	YoY%	Price/Sqft	YoY%	DOM	New Listings	Active Listings	Pending Sales	Months Inventory	Close To OLP
All(New and Existing)																
Residential (SF/COND/TH)	1	100.0%	\$110,000	100.0%	\$110,000	100.0%	\$110,000	100.0%	\$99	100.0%	9	1	3	-	3.3	100.0%
YTD:	2	100.0%	\$245,000	226.7%	\$122,500	63.3%	\$122,500	63.3%	\$91	64.8%	40	4	2	2		96.6%
Single Family	1	100.0%	\$110,000	100.0%	\$110,000	100.0%	\$110,000	100.0%	\$99	100.0%	9	1	3	-	3.3	100.0%
YTD:	2	100.0%	\$245,000	226.7%	\$122,500	63.3%	\$122,500	63.3%	\$91	64.8%	40	4	2	2		96.6%
Townhouse	-	0.0%	-	0.0%	-	0.0%	-	0.0%	-	0.0%	-	-	-	-	-	0.0%
YTD:	-	0.0%	-	0.0%	-	0.0%	-	0.0%	-	0.0%	-	-	-	-	-	0.0%
Condominium	-	0.0%	-	0.0%	-	0.0%	-	0.0%	-	0.0%	-	-	-	-	-	0.0%
YTD:	-	0.0%	-	0.0%	-	0.0%	-	0.0%	-	0.0%	-	-	-	-	-	0.0%
Existing Home																
Residential (SF/COND/TH)	1	100.0%	\$110,000	100.0%	\$110,000	100.0%	\$110,000	100.0%	\$99	100.0%	9	1	3	-	3.3	100.0%
YTD:	2	100.0%	\$245,000	226.7%	\$122,500	63.3%	\$122,500	63.3%	\$91	64.8%	40	4	2	2		96.6%
Single Family	1	100.0%	\$110,000	100.0%	\$110,000	100.0%	\$110,000	100.0%	\$99	100.0%	9	1	3	-	3.3	100.0%
YTD:	2	100.0%	\$245,000	226.7%	\$122,500	63.3%	\$122,500	63.3%	\$91	64.8%	40	4	2	2		96.6%
Townhouse	-	0.0%	-	0.0%	-	0.0%	-	0.0%	-	0.0%	-	-	-	-	-	0.0%
YTD:	-	0.0%	-	0.0%	-	0.0%	-	0.0%	-	0.0%	-	-	-	-	-	0.0%
Condominium	-	0.0%	-	0.0%	-	0.0%	-	0.0%	-	0.0%	-	-	-	-	-	0.0%
YTD:	-	0.0%	-	0.0%	-	0.0%	-	0.0%	-	0.0%	-	-	-	-	-	0.0%
New Construction																
Residential (SF/COND/TH)	-	0.0%	-	0.0%	-	0.0%	-	0.0%	-	0.0%	-	-	-	-	-	0.0%
YTD:	-	0.0%	-	0.0%	-	0.0%	-	0.0%	-	0.0%	-	-	-	-	-	0.0%
Single Family	-	0.0%	-	0.0%	-	0.0%	-	0.0%	-	0.0%	-	-	-	-	-	0.0%
YTD:	-	0.0%	-	0.0%	-	0.0%	-	0.0%	-	0.0%	-	-	-	-	-	0.0%
Townhouse	-	0.0%	-	0.0%	-	0.0%	-	0.0%	-	0.0%	-	-	-	-	-	0.0%
YTD:	-	0.0%	-	0.0%	-	0.0%	-	0.0%	-	0.0%	-	-	-	-	-	0.0%
Condominium	-	0.0%	-	0.0%	-	0.0%	-	0.0%	-	0.0%	-	-	-	-	-	0.0%
YTD:	-	0.0%	-	0.0%	-	0.0%	-	0.0%	-	0.0%	-	-	-	-	-	0.0%

* Local Market Area Code: 1014; Type: Census Place Group
 ** Closed Sale counts for most recent 3 months are Preliminary.

Market Analysis By Local Market Area*: Buffalo Springs

Property Type	Closed Sales**	YoY%	Dollar Volume	YoY%	Average Price	YoY%	Median Price	YoY%	Price/Sqft	YoY%	DOM	New Listings	Active Listings	Pending Sales	Months Inventory	Close To OLP
All(New and Existing)																
Residential (SF/COND/TH)	1	100.0%	\$155,000	100.0%	\$155,000	100.0%	\$155,000	100.0%	\$185	100.0%	93	3	2	2	2.4	91.2%
YTD:	3	200.0%	\$770,000	161.0%	\$256,667	-13.0%	\$220,000	-25.4%	\$161	2.2%	40	6	1	5		94.0%
Single Family	1	100.0%	\$155,000	100.0%	\$155,000	100.0%	\$155,000	100.0%	\$185	100.0%	93	3	2	2	2.4	91.2%
YTD:	3	200.0%	\$770,000	161.0%	\$256,667	-13.0%	\$220,000	-25.4%	\$161	2.2%	40	6	1	5		94.0%
Townhouse	-	0.0%	-	0.0%	-	0.0%	-	0.0%	-	0.0%	-	-	-	-	-	0.0%
YTD:	-	0.0%	-	0.0%	-	0.0%	-	0.0%	-	0.0%	-	-	-	-	-	0.0%
Condominium	-	0.0%	-	0.0%	-	0.0%	-	0.0%	-	0.0%	-	-	-	-	-	0.0%
YTD:	-	0.0%	-	0.0%	-	0.0%	-	0.0%	-	0.0%	-	-	-	-	-	0.0%
Existing Home																
Residential (SF/COND/TH)	1	100.0%	\$155,000	100.0%	\$155,000	100.0%	\$155,000	100.0%	\$185	100.0%	93	3	2	2	2.4	91.2%
YTD:	3	200.0%	\$770,000	161.0%	\$256,667	-13.0%	\$220,000	-25.4%	\$161	2.2%	40	6	1	5		94.0%
Single Family	1	100.0%	\$155,000	100.0%	\$155,000	100.0%	\$155,000	100.0%	\$185	100.0%	93	3	2	2	2.4	91.2%
YTD:	3	200.0%	\$770,000	161.0%	\$256,667	-13.0%	\$220,000	-25.4%	\$161	2.2%	40	6	1	5		94.0%
Townhouse	-	0.0%	-	0.0%	-	0.0%	-	0.0%	-	0.0%	-	-	-	-	-	0.0%
YTD:	-	0.0%	-	0.0%	-	0.0%	-	0.0%	-	0.0%	-	-	-	-	-	0.0%
Condominium	-	0.0%	-	0.0%	-	0.0%	-	0.0%	-	0.0%	-	-	-	-	-	0.0%
YTD:	-	0.0%	-	0.0%	-	0.0%	-	0.0%	-	0.0%	-	-	-	-	-	0.0%
New Construction																
Residential (SF/COND/TH)	-	0.0%	-	0.0%	-	0.0%	-	0.0%	-	0.0%	-	-	-	-	-	0.0%
YTD:	-	0.0%	-	0.0%	-	0.0%	-	0.0%	-	0.0%	-	-	-	-	-	0.0%
Single Family	-	0.0%	-	0.0%	-	0.0%	-	0.0%	-	0.0%	-	-	-	-	-	0.0%
YTD:	-	0.0%	-	0.0%	-	0.0%	-	0.0%	-	0.0%	-	-	-	-	-	0.0%
Townhouse	-	0.0%	-	0.0%	-	0.0%	-	0.0%	-	0.0%	-	-	-	-	-	0.0%
YTD:	-	0.0%	-	0.0%	-	0.0%	-	0.0%	-	0.0%	-	-	-	-	-	0.0%
Condominium	-	0.0%	-	0.0%	-	0.0%	-	0.0%	-	0.0%	-	-	-	-	-	0.0%
YTD:	-	0.0%	-	0.0%	-	0.0%	-	0.0%	-	0.0%	-	-	-	-	-	0.0%

* Local Market Area Code: 135; Type: Census Place Group
 ** Closed Sale counts for most recent 3 months are Preliminary.

Market Analysis By Local Market Area*: Idalou

Property Type	Closed Sales**	YoY%	Dollar Volume	YoY%	Average Price	YoY%	Median Price	YoY%	Price/Sqft	YoY%	DOM	New Listings	Active Listings	Pending Sales	Months Inventory	Close To OLP
All(New and Existing)																
Residential (SF/COND/TH)	1	-75.0%	\$225,000	-76.8%	\$225,000	-7.1%	\$225,000	-10.9%	\$161	23.0%	56	-	3	2	2.6	94.1%
YTD:	5	25.0%	\$788,000	-18.7%	\$157,600	-34.9%	\$179,000	-29.1%	\$98	-24.8%	62	6	5	4		86.9%
Single Family	1	-75.0%	\$225,000	-76.8%	\$225,000	-7.1%	\$225,000	-10.9%	\$161	23.0%	56	-	3	2	2.6	94.1%
YTD:	5	25.0%	\$788,000	-18.7%	\$157,600	-34.9%	\$179,000	-29.1%	\$98	-24.8%	62	6	5	4		86.9%
Townhouse	-	0.0%	-	0.0%	-	0.0%	-	0.0%	-	0.0%	-	-	-	-	-	0.0%
YTD:	-	0.0%	-	0.0%	-	0.0%	-	0.0%	-	0.0%	-	-	-	-	-	0.0%
Condominium	-	0.0%	-	0.0%	-	0.0%	-	0.0%	-	0.0%	-	-	-	-	-	0.0%
YTD:	-	0.0%	-	0.0%	-	0.0%	-	0.0%	-	0.0%	-	-	-	-	-	0.0%
Existing Home																
Residential (SF/COND/TH)	1	-66.7%	\$225,000	-69.1%	\$225,000	-7.4%	\$225,000	-15.1%	\$161	44.2%	56	-	3	2	2.6	94.1%
YTD:	5	66.7%	\$788,000	8.1%	\$157,600	-35.1%	\$179,000	-32.5%	\$98	-11.8%	62	6	5	4		86.9%
Single Family	1	-66.7%	\$225,000	-69.1%	\$225,000	-7.4%	\$225,000	-15.1%	\$161	44.2%	56	-	3	2	2.6	94.1%
YTD:	5	66.7%	\$788,000	8.1%	\$157,600	-35.1%	\$179,000	-32.5%	\$98	-11.8%	62	6	5	4		86.9%
Townhouse	-	0.0%	-	0.0%	-	0.0%	-	0.0%	-	0.0%	-	-	-	-	-	0.0%
YTD:	-	0.0%	-	0.0%	-	0.0%	-	0.0%	-	0.0%	-	-	-	-	-	0.0%
Condominium	-	0.0%	-	0.0%	-	0.0%	-	0.0%	-	0.0%	-	-	-	-	-	0.0%
YTD:	-	0.0%	-	0.0%	-	0.0%	-	0.0%	-	0.0%	-	-	-	-	-	0.0%
New Construction																
Residential (SF/COND/TH)	-	-100.0%	-	-100.0%	-	-100.0%	-	-100.0%	-	-100.0%	-	-	-	-	-	0.0%
YTD:	-	-100.0%	-	-100.0%	-	-100.0%	-	-100.0%	-	-100.0%	-	-	-	-	-	0.0%
Single Family	-	-100.0%	-	-100.0%	-	-100.0%	-	-100.0%	-	-100.0%	-	-	-	-	-	0.0%
YTD:	-	-100.0%	-	-100.0%	-	-100.0%	-	-100.0%	-	-100.0%	-	-	-	-	-	0.0%
Townhouse	-	0.0%	-	0.0%	-	0.0%	-	0.0%	-	0.0%	-	-	-	-	-	0.0%
YTD:	-	0.0%	-	0.0%	-	0.0%	-	0.0%	-	0.0%	-	-	-	-	-	0.0%
Condominium	-	0.0%	-	0.0%	-	0.0%	-	0.0%	-	0.0%	-	-	-	-	-	0.0%
YTD:	-	0.0%	-	0.0%	-	0.0%	-	0.0%	-	0.0%	-	-	-	-	-	0.0%

* Local Market Area Code: 456; Type: Census Place Group
 ** Closed Sale counts for most recent 3 months are Preliminary.

Market Analysis By Local Market Area*: Levelland

Property Type	Closed Sales**	YoY%	Dollar Volume	YoY%	Average Price	YoY%	Median Price	YoY%	Price/Sqft	YoY%	DOM	New Listings	Active Listings	Pending Sales	Months Inventory	Close To OLP
All(New and Existing)																
Residential (SF/COND/TH)	16	60.0%	\$2,588,300	37.1%	\$161,769	-14.3%	\$167,000	-17.5%	\$88	-6.9%	67	24	34	26	3.3	90.7%
YTD:	31	19.2%	\$5,302,500	13.2%	\$171,048	-5.1%	\$176,000	-6.0%	\$92	4.2%	71	61	42	50		93.7%
Single Family	16	60.0%	\$2,588,300	37.1%	\$161,769	-14.3%	\$167,000	-17.5%	\$88	-6.9%	67	24	34	26	3.3	90.7%
YTD:	31	19.2%	\$5,302,500	13.2%	\$171,048	-5.1%	\$176,000	-6.0%	\$92	4.2%	71	61	41	50		93.7%
Townhouse	-	0.0%	-	0.0%	-	0.0%	-	0.0%	-	0.0%	-	-	-	-	-	0.0%
YTD:	-	0.0%	-	0.0%	-	0.0%	-	0.0%	-	0.0%	-	-	-	-	-	0.0%
Condominium	-	0.0%	-	0.0%	-	0.0%	-	0.0%	-	0.0%	-	-	-	-	-	0.0%
YTD:	-	0.0%	-	0.0%	-	0.0%	-	0.0%	-	0.0%	-	-	1	-	-	0.0%
Existing Home																
Residential (SF/COND/TH)	16	60.0%	\$2,588,300	37.1%	\$161,769	-14.3%	\$167,000	-17.5%	\$88	-6.9%	67	23	33	25	3.2	90.7%
YTD:	31	19.2%	\$5,302,500	13.2%	\$171,048	-5.1%	\$176,000	-6.0%	\$92	4.2%	71	60	40	49		93.7%
Single Family	16	60.0%	\$2,588,300	37.1%	\$161,769	-14.3%	\$167,000	-17.5%	\$88	-6.9%	67	23	33	25	3.2	90.7%
YTD:	31	19.2%	\$5,302,500	13.2%	\$171,048	-5.1%	\$176,000	-6.0%	\$92	4.2%	71	60	40	49		93.7%
Townhouse	-	0.0%	-	0.0%	-	0.0%	-	0.0%	-	0.0%	-	-	-	-	-	0.0%
YTD:	-	0.0%	-	0.0%	-	0.0%	-	0.0%	-	0.0%	-	-	-	-	-	0.0%
Condominium	-	0.0%	-	0.0%	-	0.0%	-	0.0%	-	0.0%	-	-	-	-	-	0.0%
YTD:	-	0.0%	-	0.0%	-	0.0%	-	0.0%	-	0.0%	-	-	1	-	-	0.0%
New Construction																
Residential (SF/COND/TH)	-	0.0%	-	0.0%	-	0.0%	-	0.0%	-	0.0%	-	1	1	1	-	0.0%
YTD:	-	0.0%	-	0.0%	-	0.0%	-	0.0%	-	0.0%	-	1	1	1	-	0.0%
Single Family	-	0.0%	-	0.0%	-	0.0%	-	0.0%	-	0.0%	-	1	1	1	-	0.0%
YTD:	-	0.0%	-	0.0%	-	0.0%	-	0.0%	-	0.0%	-	1	1	1	-	0.0%
Townhouse	-	0.0%	-	0.0%	-	0.0%	-	0.0%	-	0.0%	-	-	-	-	-	0.0%
YTD:	-	0.0%	-	0.0%	-	0.0%	-	0.0%	-	0.0%	-	-	-	-	-	0.0%
Condominium	-	0.0%	-	0.0%	-	0.0%	-	0.0%	-	0.0%	-	-	-	-	-	0.0%
YTD:	-	0.0%	-	0.0%	-	0.0%	-	0.0%	-	0.0%	-	-	-	-	-	0.0%

* Local Market Area Code: 220; Type: Census Place Group
 ** Closed Sale counts for most recent 3 months are Preliminary.

Market Analysis By Local Market Area*: Lubbock

Property Type	Closed Sales**	YoY%	Dollar Volume	YoY%	Average Price	YoY%	Median Price	YoY%	Price/Sqft	YoY%	DOM	New Listings	Active Listings	Pending Sales	Months Inventory	Close To OLP
All(New and Existing)																
Residential (SF/COND/TH)	254	-20.6%	\$66,906,848	-16.5%	\$263,413	5.2%	\$233,055	3.6%	\$131	1.0%	50	529	880	357	3.2	96.0%
YTD:	652	-11.2%	\$169,263,751	-9.9%	\$259,607	1.4%	\$225,000	1.8%	\$129	-0.6%	48	1,499	874	881		95.7%
Single Family	240	-23.1%	\$64,228,120	-18.3%	\$267,617	6.3%	\$240,000	6.7%	\$131	0.9%	50	505	827	339	3.1	96.1%
YTD:	629	-11.5%	\$164,814,302	-10.1%	\$262,026	1.7%	\$226,750	0.8%	\$129	-0.8%	48	1,435	815	842		95.8%
Townhouse	12	100.0%	\$2,363,950	81.6%	\$196,996	-9.2%	\$190,000	-15.5%	\$139	-0.1%	52	19	44	16	6.4	95.3%
YTD:	17	-5.6%	\$3,480,950	-7.4%	\$204,762	-1.9%	\$190,000	-8.4%	\$137	5.6%	64	50	50	32		95.4%
Condominium	1	-50.0%	\$85,000	-60.5%	\$85,000	-20.9%	\$85,000	-20.9%	\$87	-13.6%	70	5	9	2	5.7	87.6%
YTD:	5	0.0%	\$735,500	-22.5%	\$147,100	-22.5%	\$126,500	-41.2%	\$136	-4.0%	27	14	8	7		94.2%
Existing Home																
Residential (SF/COND/TH)	212	-23.7%	\$55,287,919	-15.6%	\$260,792	10.7%	\$225,000	7.9%	\$127	2.5%	45	482	759	300	3.3	95.6%
YTD:	556	-13.5%	\$139,122,051	-10.5%	\$250,220	3.5%	\$215,000	3.9%	\$124	0.0%	44	1,313	731	735		95.4%
Single Family	206	-23.7%	\$54,185,686	-15.3%	\$263,037	11.0%	\$225,000	7.9%	\$127	2.6%	46	465	731	289	3.2	95.7%
YTD:	544	-12.4%	\$136,876,518	-9.3%	\$251,611	3.6%	\$215,000	3.9%	\$124	0.1%	45	1,266	699	712		95.5%
Townhouse	5	-16.7%	\$1,032,950	-20.6%	\$206,590	-4.8%	\$185,000	-17.7%	\$138	-0.7%	15	12	20	9	6.9	93.3%
YTD:	7	-58.8%	\$1,523,950	-57.2%	\$217,707	3.9%	\$203,000	-3.3%	\$130	0.7%	29	33	25	16		94.4%
Condominium	1	-50.0%	\$85,000	-60.5%	\$85,000	-20.9%	\$85,000	-20.9%	\$87	-13.6%	70	5	8	2	5.1	87.6%
YTD:	5	0.0%	\$735,500	-22.5%	\$147,100	-22.5%	\$126,500	-41.2%	\$136	-4.0%	27	14	7	7		94.2%
New Construction																
Residential (SF/COND/TH)	41	-2.4%	\$11,350,602	-22.3%	\$276,844	-20.4%	\$263,210	-10.8%	\$150	-9.6%	77	47	121	57	3.1	97.7%
YTD:	95	4.4%	\$29,842,745	-8.4%	\$314,134	-12.2%	\$271,978	-10.6%	\$158	-7.5%	71	186	142	146		97.6%
Single Family	34	-19.1%	\$10,037,993	-31.3%	\$295,235	-15.1%	\$269,990	-8.5%	\$152	-8.2%	76	40	96	50	2.7	98.0%
YTD:	85	-5.6%	\$27,899,844	-13.8%	\$328,233	-8.7%	\$279,733	-8.2%	\$160	-6.6%	69	169	116	130		97.8%
Townhouse	7	100.0%	\$1,331,000	100.0%	\$190,143	100.0%	\$190,000	100.0%	\$139	100.0%	79	7	24	7	6.0	96.4%
YTD:	10	900.0%	\$1,957,000	901.0%	\$195,700	0.1%	\$190,000	-2.8%	\$142	-2.5%	89	17	25	16		96.0%
Condominium	-	0.0%	-	0.0%	-	0.0%	-	0.0%	-	0.0%	-	-	1	-	-	0.0%
YTD:	-	0.0%	-	0.0%	-	0.0%	-	0.0%	-	0.0%	-	-	1	-		0.0%

* Local Market Area Code: 596; Type: Census Place Group
 ** Closed Sale counts for most recent 3 months are Preliminary.

Market Analysis By Local Market Area*: New Deal

Property Type	Closed Sales**	YoY%	Dollar Volume	YoY%	Average Price	YoY%	Median Price	YoY%	Price/Sqft	YoY%	DOM	New Listings	Active Listings	Pending Sales	Months Inventory	Close To OLP
All(New and Existing)																
Residential (SF/COND/TH)	-	-100.0%	-	-100.0%	-	-100.0%	-	-100.0%	-	-100.0%	-	3	3	1	12.0	0.0%
YTD:	-	-100.0%	-	-100.0%	-	-100.0%	-	-100.0%	-	-100.0%	-	6	3	2		0.0%
Single Family	-	-100.0%	-	-100.0%	-	-100.0%	-	-100.0%	-	-100.0%	-	3	3	1	12.0	0.0%
YTD:	-	-100.0%	-	-100.0%	-	-100.0%	-	-100.0%	-	-100.0%	-	6	3	2		0.0%
Townhouse	-	0.0%	-	0.0%	-	0.0%	-	0.0%	-	0.0%	-	-	-	-	-	0.0%
YTD:	-	0.0%	-	0.0%	-	0.0%	-	0.0%	-	0.0%	-	-	-	-	-	0.0%
Condominium	-	0.0%	-	0.0%	-	0.0%	-	0.0%	-	0.0%	-	-	-	-	-	0.0%
YTD:	-	0.0%	-	0.0%	-	0.0%	-	0.0%	-	0.0%	-	-	-	-	-	0.0%
Existing Home																
Residential (SF/COND/TH)	-	-100.0%	-	-100.0%	-	-100.0%	-	-100.0%	-	-100.0%	-	3	3	1	12.0	0.0%
YTD:	-	-100.0%	-	-100.0%	-	-100.0%	-	-100.0%	-	-100.0%	-	5	3	1		0.0%
Single Family	-	-100.0%	-	-100.0%	-	-100.0%	-	-100.0%	-	-100.0%	-	3	3	1	12.0	0.0%
YTD:	-	-100.0%	-	-100.0%	-	-100.0%	-	-100.0%	-	-100.0%	-	5	3	1		0.0%
Townhouse	-	0.0%	-	0.0%	-	0.0%	-	0.0%	-	0.0%	-	-	-	-	-	0.0%
YTD:	-	0.0%	-	0.0%	-	0.0%	-	0.0%	-	0.0%	-	-	-	-	-	0.0%
Condominium	-	0.0%	-	0.0%	-	0.0%	-	0.0%	-	0.0%	-	-	-	-	-	0.0%
YTD:	-	0.0%	-	0.0%	-	0.0%	-	0.0%	-	0.0%	-	-	-	-	-	0.0%
New Construction																
Residential (SF/COND/TH)	-	0.0%	-	0.0%	-	0.0%	-	0.0%	-	0.0%	-	-	-	-	-	0.0%
YTD:	-	0.0%	-	0.0%	-	0.0%	-	0.0%	-	0.0%	-	1	1	1		0.0%
Single Family	-	0.0%	-	0.0%	-	0.0%	-	0.0%	-	0.0%	-	-	-	-	-	0.0%
YTD:	-	0.0%	-	0.0%	-	0.0%	-	0.0%	-	0.0%	-	1	1	1		0.0%
Townhouse	-	0.0%	-	0.0%	-	0.0%	-	0.0%	-	0.0%	-	-	-	-	-	0.0%
YTD:	-	0.0%	-	0.0%	-	0.0%	-	0.0%	-	0.0%	-	-	-	-	-	0.0%
Condominium	-	0.0%	-	0.0%	-	0.0%	-	0.0%	-	0.0%	-	-	-	-	-	0.0%
YTD:	-	0.0%	-	0.0%	-	0.0%	-	0.0%	-	0.0%	-	-	-	-	-	0.0%

* Local Market Area Code: 700; Type: Census Place Group
 ** Closed Sale counts for most recent 3 months are Preliminary.

Market Analysis By Local Market Area*: Ransom Canyon

Property Type	Closed Sales**	YoY%	Dollar Volume	YoY%	Average Price	YoY%	Median Price	YoY%	Price/Sqft	YoY%	DOM	New Listings	Active Listings	Pending Sales	Months Inventory	Close To OLP
All(New and Existing)																
Residential (SF/COND/TH)	4	100.0%	\$1,692,500	100.0%	\$423,125	100.0%	\$402,500	100.0%	\$149	100.0%	116	11	16	3	6.9	94.2%
YTD:	7	600.0%	\$2,689,000	668.3%	\$384,143	9.8%	\$385,000	10.0%	\$139	-6.6%	120	23	12	11		96.1%
Single Family	4	100.0%	\$1,692,500	100.0%	\$423,125	100.0%	\$402,500	100.0%	\$149	100.0%	116	11	16	3	6.9	94.2%
YTD:	7	600.0%	\$2,689,000	668.3%	\$384,143	9.8%	\$385,000	10.0%	\$139	-6.6%	120	23	12	11		96.1%
Townhouse	-	0.0%	-	0.0%	-	0.0%	-	0.0%	-	0.0%	-	-	-	-	-	0.0%
YTD:	-	0.0%	-	0.0%	-	0.0%	-	0.0%	-	0.0%	-	-	-	-	-	0.0%
Condominium	-	0.0%	-	0.0%	-	0.0%	-	0.0%	-	0.0%	-	-	-	-	-	0.0%
YTD:	-	0.0%	-	0.0%	-	0.0%	-	0.0%	-	0.0%	-	-	-	-	-	0.0%
Existing Home																
Residential (SF/COND/TH)	4	100.0%	\$1,692,500	100.0%	\$423,125	100.0%	\$402,500	100.0%	\$149	100.0%	116	6	10	3	4.4	94.2%
YTD:	7	600.0%	\$2,689,000	668.3%	\$384,143	9.8%	\$385,000	10.0%	\$139	-6.6%	120	17	9	11		96.1%
Single Family	4	100.0%	\$1,692,500	100.0%	\$423,125	100.0%	\$402,500	100.0%	\$149	100.0%	116	6	10	3	4.4	94.2%
YTD:	7	600.0%	\$2,689,000	668.3%	\$384,143	9.8%	\$385,000	10.0%	\$139	-6.6%	120	17	9	11		96.1%
Townhouse	-	0.0%	-	0.0%	-	0.0%	-	0.0%	-	0.0%	-	-	-	-	-	0.0%
YTD:	-	0.0%	-	0.0%	-	0.0%	-	0.0%	-	0.0%	-	-	-	-	-	0.0%
Condominium	-	0.0%	-	0.0%	-	0.0%	-	0.0%	-	0.0%	-	-	-	-	-	0.0%
YTD:	-	0.0%	-	0.0%	-	0.0%	-	0.0%	-	0.0%	-	-	-	-	-	0.0%
New Construction																
Residential (SF/COND/TH)	-	0.0%	-	0.0%	-	0.0%	-	0.0%	-	0.0%	-	5	6	-	72.0	0.0%
YTD:	-	0.0%	-	0.0%	-	0.0%	-	0.0%	-	0.0%	-	6	2	-		0.0%
Single Family	-	0.0%	-	0.0%	-	0.0%	-	0.0%	-	0.0%	-	5	6	-	72.0	0.0%
YTD:	-	0.0%	-	0.0%	-	0.0%	-	0.0%	-	0.0%	-	6	2	-		0.0%
Townhouse	-	0.0%	-	0.0%	-	0.0%	-	0.0%	-	0.0%	-	-	-	-	-	0.0%
YTD:	-	0.0%	-	0.0%	-	0.0%	-	0.0%	-	0.0%	-	-	-	-	-	0.0%
Condominium	-	0.0%	-	0.0%	-	0.0%	-	0.0%	-	0.0%	-	-	-	-	-	0.0%
YTD:	-	0.0%	-	0.0%	-	0.0%	-	0.0%	-	0.0%	-	-	-	-	-	0.0%

* Local Market Area Code: 826; Type: Census Place Group
 ** Closed Sale counts for most recent 3 months are Preliminary.

Market Analysis By Local Market Area*: Ropesville

Property Type	Closed Sales**	YoY%	Dollar Volume	YoY%	Average Price	YoY%	Median Price	YoY%	Price/Sqft	YoY%	DOM	New Listings	Active Listings	Pending Sales	Months Inventory	Close To OLP
All(New and Existing)																
Residential (SF/COND/TH)	-	0.0%	-	0.0%	-	0.0%	-	0.0%	-	0.0%	-	-	-	-	-	0.0%
YTD:	-	0.0%	-	0.0%	-	0.0%	-	0.0%	-	0.0%	-	-	-	-	-	0.0%
Single Family	-	0.0%	-	0.0%	-	0.0%	-	0.0%	-	0.0%	-	-	-	-	-	0.0%
YTD:	-	0.0%	-	0.0%	-	0.0%	-	0.0%	-	0.0%	-	-	-	-	-	0.0%
Townhouse	-	0.0%	-	0.0%	-	0.0%	-	0.0%	-	0.0%	-	-	-	-	-	0.0%
YTD:	-	0.0%	-	0.0%	-	0.0%	-	0.0%	-	0.0%	-	-	-	-	-	0.0%
Condominium	-	0.0%	-	0.0%	-	0.0%	-	0.0%	-	0.0%	-	-	-	-	-	0.0%
YTD:	-	0.0%	-	0.0%	-	0.0%	-	0.0%	-	0.0%	-	-	-	-	-	0.0%
Existing Home																
Residential (SF/COND/TH)	-	0.0%	-	0.0%	-	0.0%	-	0.0%	-	0.0%	-	-	-	-	-	0.0%
YTD:	-	0.0%	-	0.0%	-	0.0%	-	0.0%	-	0.0%	-	-	-	-	-	0.0%
Single Family	-	0.0%	-	0.0%	-	0.0%	-	0.0%	-	0.0%	-	-	-	-	-	0.0%
YTD:	-	0.0%	-	0.0%	-	0.0%	-	0.0%	-	0.0%	-	-	-	-	-	0.0%
Townhouse	-	0.0%	-	0.0%	-	0.0%	-	0.0%	-	0.0%	-	-	-	-	-	0.0%
YTD:	-	0.0%	-	0.0%	-	0.0%	-	0.0%	-	0.0%	-	-	-	-	-	0.0%
Condominium	-	0.0%	-	0.0%	-	0.0%	-	0.0%	-	0.0%	-	-	-	-	-	0.0%
YTD:	-	0.0%	-	0.0%	-	0.0%	-	0.0%	-	0.0%	-	-	-	-	-	0.0%
New Construction																
Residential (SF/COND/TH)	-	0.0%	-	0.0%	-	0.0%	-	0.0%	-	0.0%	-	-	-	-	-	0.0%
YTD:	-	0.0%	-	0.0%	-	0.0%	-	0.0%	-	0.0%	-	-	-	-	-	0.0%
Single Family	-	0.0%	-	0.0%	-	0.0%	-	0.0%	-	0.0%	-	-	-	-	-	0.0%
YTD:	-	0.0%	-	0.0%	-	0.0%	-	0.0%	-	0.0%	-	-	-	-	-	0.0%
Townhouse	-	0.0%	-	0.0%	-	0.0%	-	0.0%	-	0.0%	-	-	-	-	-	0.0%
YTD:	-	0.0%	-	0.0%	-	0.0%	-	0.0%	-	0.0%	-	-	-	-	-	0.0%
Condominium	-	0.0%	-	0.0%	-	0.0%	-	0.0%	-	0.0%	-	-	-	-	-	0.0%
YTD:	-	0.0%	-	0.0%	-	0.0%	-	0.0%	-	0.0%	-	-	-	-	-	0.0%

* Local Market Area Code: 222; Type: Census Place Group
 ** Closed Sale counts for most recent 3 months are Preliminary.

Market Analysis By Local Market Area*: Shallowater

Property Type	Closed Sales**	YoY%	Dollar Volume	YoY%	Average Price	YoY%	Median Price	YoY%	Price/Sqft	YoY%	DOM	New Listings	Active Listings	Pending Sales	Months Inventory	Close To OLP
All(New and Existing)																
Residential (SF/COND/TH)	5	66.7%	\$1,014,500	14.9%	\$202,900	-31.1%	\$205,000	-31.5%	\$122	-21.1%	75	9	8	9	3.2	95.5%
YTD:	7	40.0%	\$1,419,500	2.3%	\$202,786	-27.0%	\$205,000	-31.5%	\$126	-12.3%	78	25	12	16		97.2%
Single Family	5	66.7%	\$1,014,500	14.9%	\$202,900	-31.1%	\$205,000	-31.5%	\$122	-21.1%	75	9	8	9	3.2	95.5%
YTD:	7	40.0%	\$1,419,500	2.3%	\$202,786	-27.0%	\$205,000	-31.5%	\$126	-12.3%	78	25	12	16		97.2%
Townhouse	-	0.0%	-	0.0%	-	0.0%	-	0.0%	-	0.0%	-	-	-	-	-	0.0%
YTD:	-	0.0%	-	0.0%	-	0.0%	-	0.0%	-	0.0%	-	-	-	-	-	0.0%
Condominium	-	0.0%	-	0.0%	-	0.0%	-	0.0%	-	0.0%	-	-	-	-	-	0.0%
YTD:	-	0.0%	-	0.0%	-	0.0%	-	0.0%	-	0.0%	-	-	-	-	-	0.0%
Existing Home																
Residential (SF/COND/TH)	5	400.0%	\$1,014,500	554.5%	\$202,900	30.9%	\$205,000	32.3%	\$122	7.6%	75	6	4	8	1.8	95.5%
YTD:	7	133.3%	\$1,419,500	115.0%	\$202,786	-7.9%	\$205,000	10.6%	\$126	2.6%	78	17	7	15		97.2%
Single Family	5	400.0%	\$1,014,500	554.5%	\$202,900	30.9%	\$205,000	32.3%	\$122	7.6%	75	6	4	8	1.8	95.5%
YTD:	7	133.3%	\$1,419,500	115.0%	\$202,786	-7.9%	\$205,000	10.6%	\$126	2.6%	78	17	7	15		97.2%
Townhouse	-	0.0%	-	0.0%	-	0.0%	-	0.0%	-	0.0%	-	-	-	-	-	0.0%
YTD:	-	0.0%	-	0.0%	-	0.0%	-	0.0%	-	0.0%	-	-	-	-	-	0.0%
Condominium	-	0.0%	-	0.0%	-	0.0%	-	0.0%	-	0.0%	-	-	-	-	-	0.0%
YTD:	-	0.0%	-	0.0%	-	0.0%	-	0.0%	-	0.0%	-	-	-	-	-	0.0%
New Construction																
Residential (SF/COND/TH)	-	-100.0%	-	-100.0%	-	-100.0%	-	-100.0%	-	-100.0%	-	3	4	1	12.0	0.0%
YTD:	-	-100.0%	-	-100.0%	-	-100.0%	-	-100.0%	-	-100.0%	-	8	5	1		0.0%
Single Family	-	-100.0%	-	-100.0%	-	-100.0%	-	-100.0%	-	-100.0%	-	3	4	1	12.0	0.0%
YTD:	-	-100.0%	-	-100.0%	-	-100.0%	-	-100.0%	-	-100.0%	-	8	5	1		0.0%
Townhouse	-	0.0%	-	0.0%	-	0.0%	-	0.0%	-	0.0%	-	-	-	-	-	0.0%
YTD:	-	0.0%	-	0.0%	-	0.0%	-	0.0%	-	0.0%	-	-	-	-	-	0.0%
Condominium	-	0.0%	-	0.0%	-	0.0%	-	0.0%	-	0.0%	-	-	-	-	-	0.0%
YTD:	-	0.0%	-	0.0%	-	0.0%	-	0.0%	-	0.0%	-	-	-	-	-	0.0%

* Local Market Area Code: 925; Type: Census Place Group
 ** Closed Sale counts for most recent 3 months are Preliminary.

Market Analysis By Local Market Area*: Slaton

Property Type	Closed Sales**	YoY%	Dollar Volume	YoY%	Average Price	YoY%	Median Price	YoY%	Price/Sqft	YoY%	DOM	New Listings	Active Listings	Pending Sales	Months Inventory	Close To OLP
All(New and Existing)																
Residential (SF/COND/TH)	3	200.0%	\$499,000	73.3%	\$166,333	-42.3%	\$219,000	-24.0%	\$98	-46.7%	49	6	21	9	4.3	99.4%
YTD:	15	87.5%	\$2,409,900	102.7%	\$160,660	8.1%	\$138,500	2.8%	\$91	6.7%	87	22	20	15		89.5%
Single Family	3	200.0%	\$499,000	73.3%	\$166,333	-42.3%	\$219,000	-24.0%	\$98	-46.7%	49	6	20	9	4.1	99.4%
YTD:	15	87.5%	\$2,409,900	102.7%	\$160,660	8.1%	\$138,500	2.8%	\$91	6.7%	87	21	19	15		89.5%
Townhouse	-	0.0%	-	0.0%	-	0.0%	-	0.0%	-	0.0%	-	-	-	-	-	0.0%
YTD:	-	0.0%	-	0.0%	-	0.0%	-	0.0%	-	0.0%	-	-	-	-	-	0.0%
Condominium	-	0.0%	-	0.0%	-	0.0%	-	0.0%	-	0.0%	-	-	1	-	-	0.0%
YTD:	-	0.0%	-	0.0%	-	0.0%	-	0.0%	-	0.0%	-	1	1	-	-	0.0%
Existing Home																
Residential (SF/COND/TH)	3	200.0%	\$499,000	73.3%	\$166,333	-42.3%	\$219,000	-24.0%	\$98	-46.7%	49	6	21	9	4.3	99.4%
YTD:	15	87.5%	\$2,409,900	102.7%	\$160,660	8.1%	\$138,500	2.8%	\$91	6.7%	87	22	20	15		89.5%
Single Family	3	200.0%	\$499,000	73.3%	\$166,333	-42.3%	\$219,000	-24.0%	\$98	-46.7%	49	6	20	9	4.1	99.4%
YTD:	15	87.5%	\$2,409,900	102.7%	\$160,660	8.1%	\$138,500	2.8%	\$91	6.7%	87	21	19	15		89.5%
Townhouse	-	0.0%	-	0.0%	-	0.0%	-	0.0%	-	0.0%	-	-	-	-	-	0.0%
YTD:	-	0.0%	-	0.0%	-	0.0%	-	0.0%	-	0.0%	-	-	-	-	-	0.0%
Condominium	-	0.0%	-	0.0%	-	0.0%	-	0.0%	-	0.0%	-	-	1	-	-	0.0%
YTD:	-	0.0%	-	0.0%	-	0.0%	-	0.0%	-	0.0%	-	1	1	-	-	0.0%
New Construction																
Residential (SF/COND/TH)	-	0.0%	-	0.0%	-	0.0%	-	0.0%	-	0.0%	-	-	-	-	-	0.0%
YTD:	-	0.0%	-	0.0%	-	0.0%	-	0.0%	-	0.0%	-	-	-	-	-	0.0%
Single Family	-	0.0%	-	0.0%	-	0.0%	-	0.0%	-	0.0%	-	-	-	-	-	0.0%
YTD:	-	0.0%	-	0.0%	-	0.0%	-	0.0%	-	0.0%	-	-	-	-	-	0.0%
Townhouse	-	0.0%	-	0.0%	-	0.0%	-	0.0%	-	0.0%	-	-	-	-	-	0.0%
YTD:	-	0.0%	-	0.0%	-	0.0%	-	0.0%	-	0.0%	-	-	-	-	-	0.0%
Condominium	-	0.0%	-	0.0%	-	0.0%	-	0.0%	-	0.0%	-	-	-	-	-	0.0%
YTD:	-	0.0%	-	0.0%	-	0.0%	-	0.0%	-	0.0%	-	-	-	-	-	0.0%

* Local Market Area Code: 935; Type: Census Place Group
 ** Closed Sale counts for most recent 3 months are Preliminary.

Market Analysis By Local Market Area*: Smyer

Property Type	Closed Sales**	YoY%	Dollar Volume	YoY%	Average Price	YoY%	Median Price	YoY%	Price/Sqft	YoY%	DOM	New Listings	Active Listings	Pending Sales	Months Inventory	Close To OLP
All(New and Existing)																
Residential (SF/COND/TH)	1	100.0%	\$228,000	100.0%	\$228,000	100.0%	\$228,000	100.0%	\$112	100.0%	57	-	1	-	12.0	104.3%
YTD:	1	100.0%	\$228,000	100.0%	\$228,000	100.0%	\$228,000	100.0%	\$112	100.0%	57	-	1	1		104.3%
Single Family	1	100.0%	\$228,000	100.0%	\$228,000	100.0%	\$228,000	100.0%	\$112	100.0%	57	-	1	-	12.0	104.3%
YTD:	1	100.0%	\$228,000	100.0%	\$228,000	100.0%	\$228,000	100.0%	\$112	100.0%	57	-	1	1		104.3%
Townhouse	-	0.0%	-	0.0%	-	0.0%	-	0.0%	-	0.0%	-	-	-	-	-	0.0%
YTD:	-	0.0%	-	0.0%	-	0.0%	-	0.0%	-	0.0%	-	-	-	-	-	0.0%
Condominium	-	0.0%	-	0.0%	-	0.0%	-	0.0%	-	0.0%	-	-	-	-	-	0.0%
YTD:	-	0.0%	-	0.0%	-	0.0%	-	0.0%	-	0.0%	-	-	-	-	-	0.0%
Existing Home																
Residential (SF/COND/TH)	1	100.0%	\$228,000	100.0%	\$228,000	100.0%	\$228,000	100.0%	\$112	100.0%	57	-	1	-	12.0	104.3%
YTD:	1	100.0%	\$228,000	100.0%	\$228,000	100.0%	\$228,000	100.0%	\$112	100.0%	57	-	1	1		104.3%
Single Family	1	100.0%	\$228,000	100.0%	\$228,000	100.0%	\$228,000	100.0%	\$112	100.0%	57	-	1	-	12.0	104.3%
YTD:	1	100.0%	\$228,000	100.0%	\$228,000	100.0%	\$228,000	100.0%	\$112	100.0%	57	-	1	1		104.3%
Townhouse	-	0.0%	-	0.0%	-	0.0%	-	0.0%	-	0.0%	-	-	-	-	-	0.0%
YTD:	-	0.0%	-	0.0%	-	0.0%	-	0.0%	-	0.0%	-	-	-	-	-	0.0%
Condominium	-	0.0%	-	0.0%	-	0.0%	-	0.0%	-	0.0%	-	-	-	-	-	0.0%
YTD:	-	0.0%	-	0.0%	-	0.0%	-	0.0%	-	0.0%	-	-	-	-	-	0.0%
New Construction																
Residential (SF/COND/TH)	-	0.0%	-	0.0%	-	0.0%	-	0.0%	-	0.0%	-	-	-	-	-	0.0%
YTD:	-	0.0%	-	0.0%	-	0.0%	-	0.0%	-	0.0%	-	-	-	-	-	0.0%
Single Family	-	0.0%	-	0.0%	-	0.0%	-	0.0%	-	0.0%	-	-	-	-	-	0.0%
YTD:	-	0.0%	-	0.0%	-	0.0%	-	0.0%	-	0.0%	-	-	-	-	-	0.0%
Townhouse	-	0.0%	-	0.0%	-	0.0%	-	0.0%	-	0.0%	-	-	-	-	-	0.0%
YTD:	-	0.0%	-	0.0%	-	0.0%	-	0.0%	-	0.0%	-	-	-	-	-	0.0%
Condominium	-	0.0%	-	0.0%	-	0.0%	-	0.0%	-	0.0%	-	-	-	-	-	0.0%
YTD:	-	0.0%	-	0.0%	-	0.0%	-	0.0%	-	0.0%	-	-	-	-	-	0.0%

* Local Market Area Code: 491; Type: Census Place Group
 ** Closed Sale counts for most recent 3 months are Preliminary.

Market Analysis By Local Market Area*: Sundown

Property Type	Closed Sales**	YoY%	Dollar Volume	YoY%	Average Price	YoY%	Median Price	YoY%	Price/Sqft	YoY%	DOM	New Listings	Active Listings	Pending Sales	Months Inventory	Close To OLP
All(New and Existing)																
Residential (SF/COND/TH)	1	100.0%	\$69,000	100.0%	\$69,000	100.0%	\$69,000	100.0%	\$45	100.0%	52	-	1	1	2.0	76.7%
YTD:	2	100.0%	\$179,000	100.0%	\$89,500	100.0%	\$89,500	100.0%	\$68	100.0%	29	1	2	3		82.3%
Single Family	1	100.0%	\$69,000	100.0%	\$69,000	100.0%	\$69,000	100.0%	\$45	100.0%	52	-	1	1	2.0	76.7%
YTD:	2	100.0%	\$179,000	100.0%	\$89,500	100.0%	\$89,500	100.0%	\$68	100.0%	29	1	2	3		82.3%
Townhouse	-	0.0%	-	0.0%	-	0.0%	-	0.0%	-	0.0%	-	-	-	-	-	0.0%
YTD:	-	0.0%	-	0.0%	-	0.0%	-	0.0%	-	0.0%	-	-	-	-	-	0.0%
Condominium	-	0.0%	-	0.0%	-	0.0%	-	0.0%	-	0.0%	-	-	-	-	-	0.0%
YTD:	-	0.0%	-	0.0%	-	0.0%	-	0.0%	-	0.0%	-	-	-	-	-	0.0%
Existing Home																
Residential (SF/COND/TH)	1	100.0%	\$69,000	100.0%	\$69,000	100.0%	\$69,000	100.0%	\$45	100.0%	52	-	1	1	2.0	76.7%
YTD:	2	100.0%	\$179,000	100.0%	\$89,500	100.0%	\$89,500	100.0%	\$68	100.0%	29	1	2	3		82.3%
Single Family	1	100.0%	\$69,000	100.0%	\$69,000	100.0%	\$69,000	100.0%	\$45	100.0%	52	-	1	1	2.0	76.7%
YTD:	2	100.0%	\$179,000	100.0%	\$89,500	100.0%	\$89,500	100.0%	\$68	100.0%	29	1	2	3		82.3%
Townhouse	-	0.0%	-	0.0%	-	0.0%	-	0.0%	-	0.0%	-	-	-	-	-	0.0%
YTD:	-	0.0%	-	0.0%	-	0.0%	-	0.0%	-	0.0%	-	-	-	-	-	0.0%
Condominium	-	0.0%	-	0.0%	-	0.0%	-	0.0%	-	0.0%	-	-	-	-	-	0.0%
YTD:	-	0.0%	-	0.0%	-	0.0%	-	0.0%	-	0.0%	-	-	-	-	-	0.0%
New Construction																
Residential (SF/COND/TH)	-	0.0%	-	0.0%	-	0.0%	-	0.0%	-	0.0%	-	-	-	-	-	0.0%
YTD:	-	0.0%	-	0.0%	-	0.0%	-	0.0%	-	0.0%	-	-	-	-	-	0.0%
Single Family	-	0.0%	-	0.0%	-	0.0%	-	0.0%	-	0.0%	-	-	-	-	-	0.0%
YTD:	-	0.0%	-	0.0%	-	0.0%	-	0.0%	-	0.0%	-	-	-	-	-	0.0%
Townhouse	-	0.0%	-	0.0%	-	0.0%	-	0.0%	-	0.0%	-	-	-	-	-	0.0%
YTD:	-	0.0%	-	0.0%	-	0.0%	-	0.0%	-	0.0%	-	-	-	-	-	0.0%
Condominium	-	0.0%	-	0.0%	-	0.0%	-	0.0%	-	0.0%	-	-	-	-	-	0.0%
YTD:	-	0.0%	-	0.0%	-	0.0%	-	0.0%	-	0.0%	-	-	-	-	-	0.0%

* Local Market Area Code: 223; Type: Census Place Group
 ** Closed Sale counts for most recent 3 months are Preliminary.

Market Analysis By Local Market Area*: Wolfforth

Property Type	Closed Sales**	YoY%	Dollar Volume	YoY%	Average Price	YoY%	Median Price	YoY%	Price/Sqft	YoY%	DOM	New Listings	Active Listings	Pending Sales	Months Inventory	Close To OLP
All(New and Existing)																
Residential (SF/COND/TH)	19	5.6%	\$5,665,167	6.2%	\$298,167	0.6%	\$300,925	1.6%	\$152	1.1%	81	24	34	21	1.9	96.9%
YTD:	42	-17.7%	\$12,868,777	-10.5%	\$306,399	8.7%	\$317,500	14.5%	\$151	4.0%	58	77	40	56		96.9%
Single Family	19	5.6%	\$5,665,167	6.2%	\$298,167	0.6%	\$300,925	1.6%	\$152	1.1%	81	24	34	21	1.9	96.9%
YTD:	42	-17.7%	\$12,868,777	-10.5%	\$306,399	8.7%	\$317,500	14.5%	\$151	4.0%	58	77	40	56		96.9%
Townhouse	-	0.0%	-	0.0%	-	0.0%	-	0.0%	-	0.0%	-	-	-	-	-	0.0%
YTD:	-	0.0%	-	0.0%	-	0.0%	-	0.0%	-	0.0%	-	-	-	-	-	0.0%
Condominium	-	0.0%	-	0.0%	-	0.0%	-	0.0%	-	0.0%	-	-	-	-	-	0.0%
YTD:	-	0.0%	-	0.0%	-	0.0%	-	0.0%	-	0.0%	-	-	-	-	-	0.0%
Existing Home																
Residential (SF/COND/TH)	14	100.0%	\$3,970,023	126.9%	\$283,573	13.4%	\$297,000	17.9%	\$145	15.8%	99	20	24	16	2.3	96.1%
YTD:	29	45.0%	\$8,870,530	78.8%	\$305,880	23.3%	\$318,750	26.2%	\$149	14.8%	64	58	25	37		96.4%
Single Family	14	100.0%	\$3,970,023	126.9%	\$283,573	13.4%	\$297,000	17.9%	\$145	15.8%	99	20	24	16	2.3	96.1%
YTD:	29	45.0%	\$8,870,530	78.8%	\$305,880	23.3%	\$318,750	26.2%	\$149	14.8%	64	58	25	37		96.4%
Townhouse	-	0.0%	-	0.0%	-	0.0%	-	0.0%	-	0.0%	-	-	-	-	-	0.0%
YTD:	-	0.0%	-	0.0%	-	0.0%	-	0.0%	-	0.0%	-	-	-	-	-	0.0%
Condominium	-	0.0%	-	0.0%	-	0.0%	-	0.0%	-	0.0%	-	-	-	-	-	0.0%
YTD:	-	0.0%	-	0.0%	-	0.0%	-	0.0%	-	0.0%	-	-	-	-	-	0.0%
New Construction																
Residential (SF/COND/TH)	5	-54.6%	\$1,680,550	-53.1%	\$336,110	3.2%	\$304,850	2.5%	\$168	1.5%	32	4	10	5	1.4	99.0%
YTD:	13	-58.1%	\$3,997,728	-57.5%	\$307,518	1.3%	\$304,850	7.7%	\$156	0.4%	46	19	15	19		98.0%
Single Family	5	-54.6%	\$1,680,550	-53.1%	\$336,110	3.2%	\$304,850	2.5%	\$168	1.5%	32	4	10	5	1.4	99.0%
YTD:	13	-58.1%	\$3,997,728	-57.5%	\$307,518	1.3%	\$304,850	7.7%	\$156	0.4%	46	19	15	19		98.0%
Townhouse	-	0.0%	-	0.0%	-	0.0%	-	0.0%	-	0.0%	-	-	-	-	-	0.0%
YTD:	-	0.0%	-	0.0%	-	0.0%	-	0.0%	-	0.0%	-	-	-	-	-	0.0%
Condominium	-	0.0%	-	0.0%	-	0.0%	-	0.0%	-	0.0%	-	-	-	-	-	0.0%
YTD:	-	0.0%	-	0.0%	-	0.0%	-	0.0%	-	0.0%	-	-	-	-	-	0.0%

* Local Market Area Code: 1096; Type: Census Place Group
 ** Closed Sale counts for most recent 3 months are Preliminary.

