

Market Analysis By State: Texas

Property Type	Closed Sales*	YoY%	Dollar Volume	YoY%	Average Price	YoY%	Median Price	YoY%	Price/Sqft	YoY%	DOM	New Listings	Active Listings	Pending Sales	Months Inventory	Close To OLP
All(New and Existing)																
Residential (SF/COND/TH)	24,093	2.5%	\$9,733,169,418	6.1%	\$403,983	3.5%	\$334,000	2.8%	\$188	2.9%	67	43,339	98,460	28,273	3.6	94.5%
YTD:	43,413	4.6%	\$17,338,538,288	7.6%	\$399,386	2.9%	\$329,900	2.0%	\$186	2.5%	66	83,303	96,528	54,219		94.2%
Single Family	22,699	2.8%	\$9,260,401,979	6.5%	\$407,965	3.6%	\$335,000	1.8%	\$185	3.0%	67	40,160	90,882	26,632	3.5	94.5%
YTD:	40,932	5.1%	\$16,498,814,782	8.1%	\$403,079	2.8%	\$330,000	1.5%	\$184	2.6%	66	77,018	89,226	51,142		94.2%
Townhouse	627	0.6%	\$217,348,815	4.3%	\$346,649	3.6%	\$327,500	4.0%	\$193	3.0%	60	1,273	2,710	741	3.8	95.5%
YTD:	1,139	1.2%	\$398,524,503	6.3%	\$349,890	5.0%	\$320,000	1.9%	\$192	2.9%	61	2,574	2,636	1,430		95.1%
Condominium	738	-7.8%	\$245,794,827	-8.9%	\$333,055	-1.2%	\$258,500	3.8%	\$262	2.7%	64	1,906	4,868	900	5.3	93.8%
YTD:	1,306	-10.3%	\$429,338,220	-7.6%	\$328,743	3.1%	\$247,500	7.5%	\$258	4.6%	64	3,711	4,666	1,647		93.3%
Existing Home																
Residential (SF/COND/TH)	17,382	1.5%	\$7,012,912,315	7.8%	\$403,458	6.3%	\$325,000	4.8%	\$189	4.7%	61	32,879	69,347	19,631	3.4	94.5%
YTD:	31,501	2.7%	\$12,483,466,804	8.5%	\$396,288	5.6%	\$319,000	4.6%	\$186	4.4%	60	61,771	67,168	37,783		94.1%
Single Family	16,178	1.6%	\$6,617,008,164	8.1%	\$409,013	6.4%	\$329,030	4.5%	\$186	4.9%	61	30,146	63,184	18,283	3.3	94.5%
YTD:	29,366	3.2%	\$11,787,501,270	8.9%	\$401,400	5.6%	\$320,000	3.2%	\$183	4.5%	61	56,531	61,330	35,217		94.1%
Townhouse	484	5.0%	\$162,231,882	11.6%	\$335,190	6.3%	\$310,000	10.7%	\$188	5.0%	50	930	1,817	509	3.4	95.8%
YTD:	871	3.7%	\$291,920,182	9.9%	\$335,155	6.0%	\$299,812	6.1%	\$186	4.3%	52	1,842	1,742	1,021		95.3%
Condominium	699	-6.9%	\$226,919,473	-5.6%	\$324,634	1.4%	\$250,000	5.5%	\$261	4.2%	62	1,803	4,346	839	5.0	93.8%
YTD:	1,236	-10.0%	\$395,037,669	-5.7%	\$319,610	4.8%	\$240,000	7.1%	\$257	6.1%	63	3,398	4,095	1,545		93.4%
New Construction																
Residential (SF/COND/TH)	6,695	5.1%	\$2,713,869,571	1.7%	\$405,358	-3.3%	\$347,000	-3.3%	\$186	-1.8%	81	10,460	29,113	8,642	4.2	94.5%
YTD:	11,893	9.7%	\$4,848,017,322	5.3%	\$407,636	-4.0%	\$349,990	-2.5%	\$186	-2.4%	80	21,532	29,360	16,436		94.3%
Single Family	6,507	5.7%	\$2,637,540,730	2.4%	\$405,339	-3.1%	\$345,000	-3.4%	\$185	-1.6%	81	10,014	27,698	8,349	4.1	94.5%
YTD:	11,550	10.3%	\$4,705,148,657	5.8%	\$407,372	-4.1%	\$348,968	-2.5%	\$185	-2.1%	80	20,487	27,895	15,925		94.4%
Townhouse	142	-12.4%	\$54,698,420	-13.3%	\$385,200	-1.1%	\$374,736	-0.2%	\$208	-0.9%	93	343	893	232	5.0	94.8%
YTD:	267	-6.3%	\$106,143,449	-3.0%	\$397,541	3.6%	\$370,000	0.0%	\$211	0.2%	92	732	893	409		94.6%
Condominium	39	-20.4%	\$18,822,835	-35.9%	\$482,637	-19.4%	\$474,166	5.4%	\$294	-12.7%	92	103	522	61	8.7	93.8%
YTD:	70	-15.7%	\$34,223,251	-25.1%	\$488,904	-11.2%	\$463,331	3.5%	\$292	-13.3%	83	313	571	102		93.0%

* Closed Sale counts for most recent 3 months are Preliminary.

Trend Analysis By State: Texas

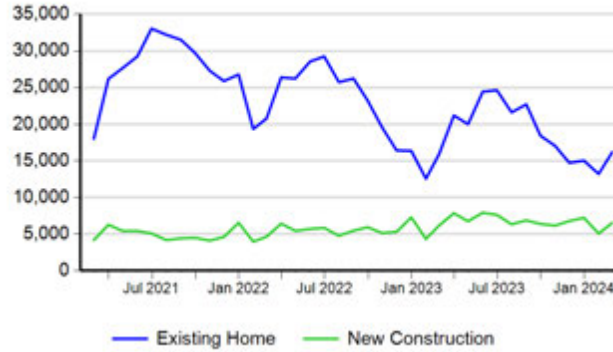
Residential, All (New and Existing)

Monthly Units Sold



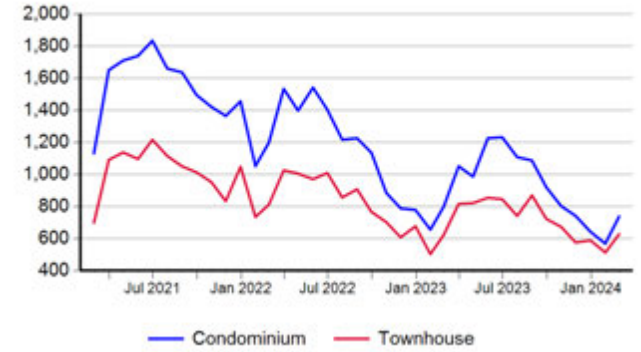
Single Family, New vs. Existing

Monthly Units Sold



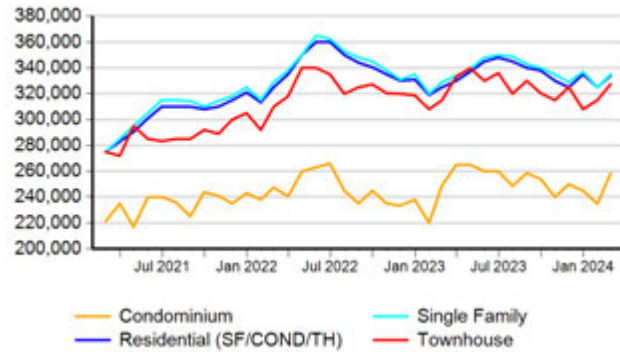
COND/TH, All (New and Existing)

Monthly Units Sold



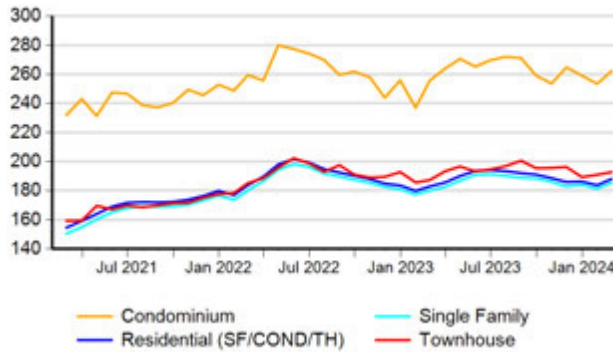
All (New and Existing) Construction

Median Sale Price



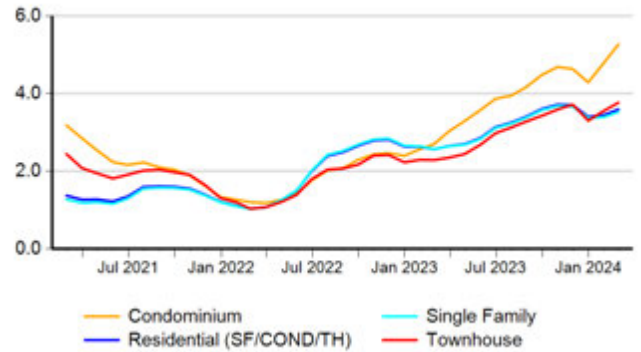
All (New and Existing) Construction

Average Close Price PSF



All (New and Existing) Construction

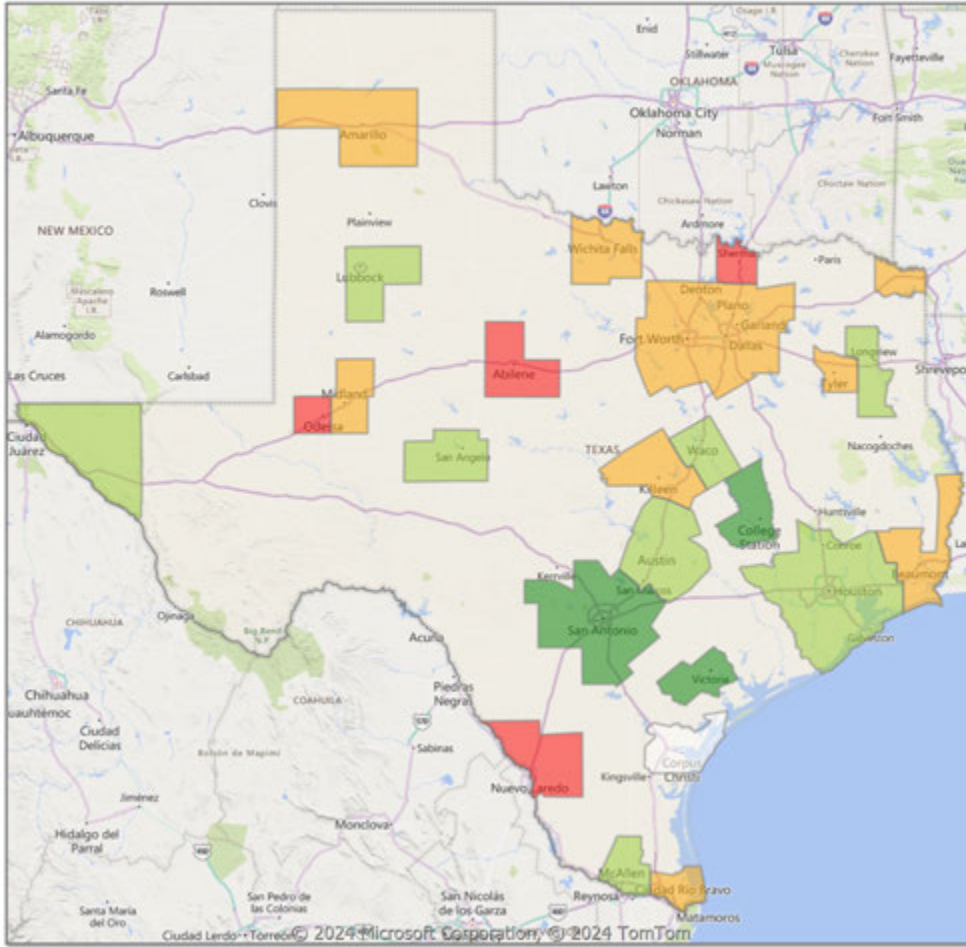
Months Inventory



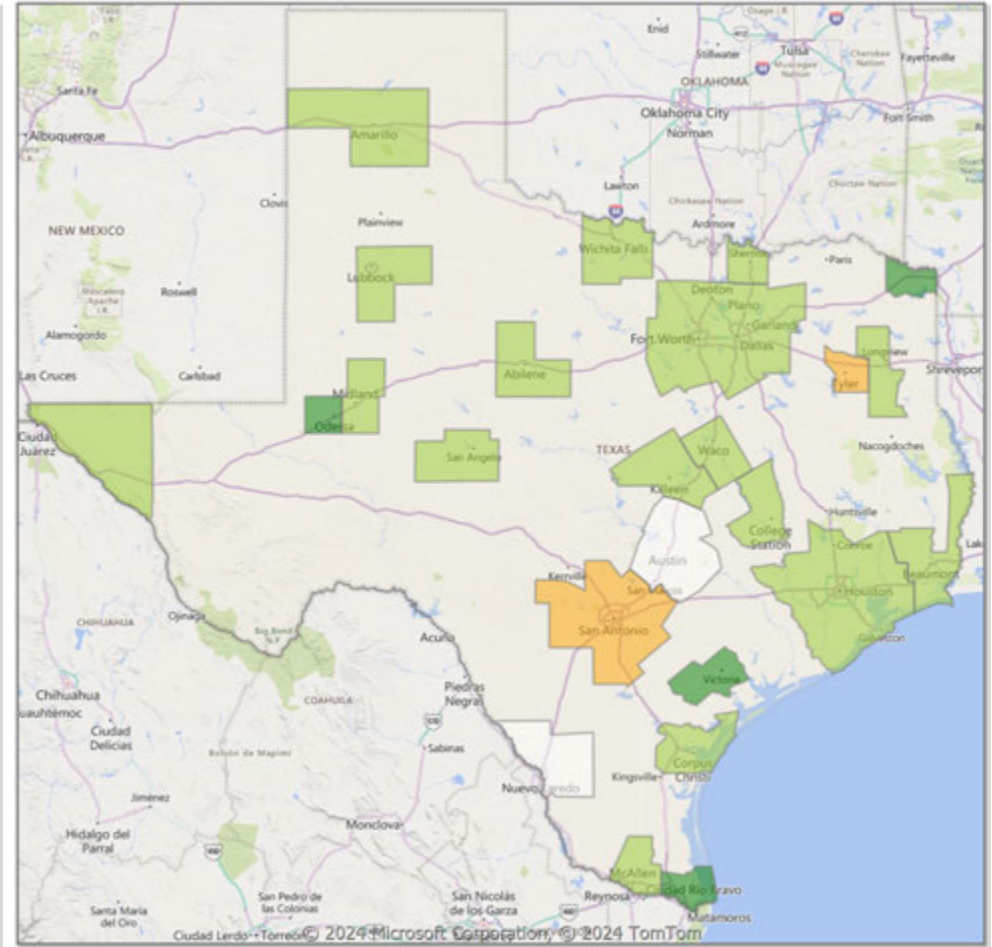
* Closed Sale counts for most recent 3 months are Preliminary.

Comparison By Metropolitan Statistical Area in Texas

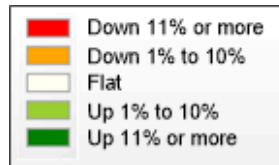
**Residential* Closed Sales
YoY Percentage Change**



**Residential* Avg Close Price Per SqFt
YoY Percentage Change**

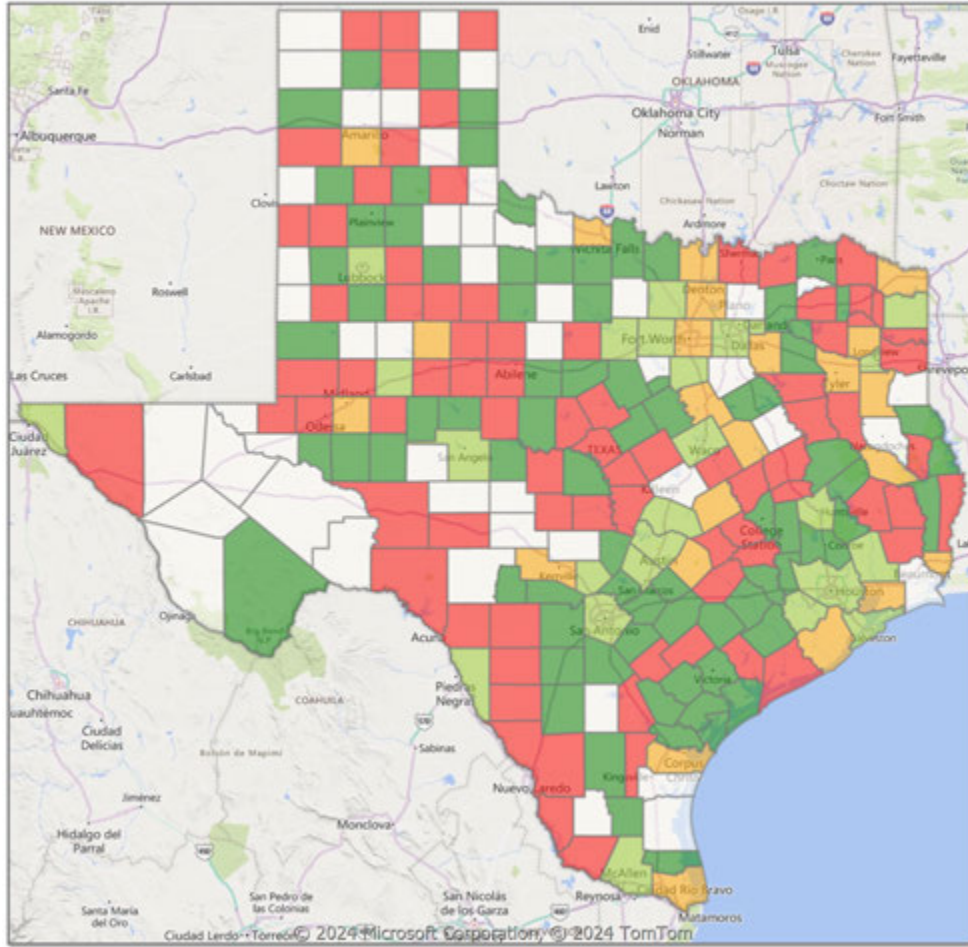


* Residential includes Single Family, Condominium and Townhouse.

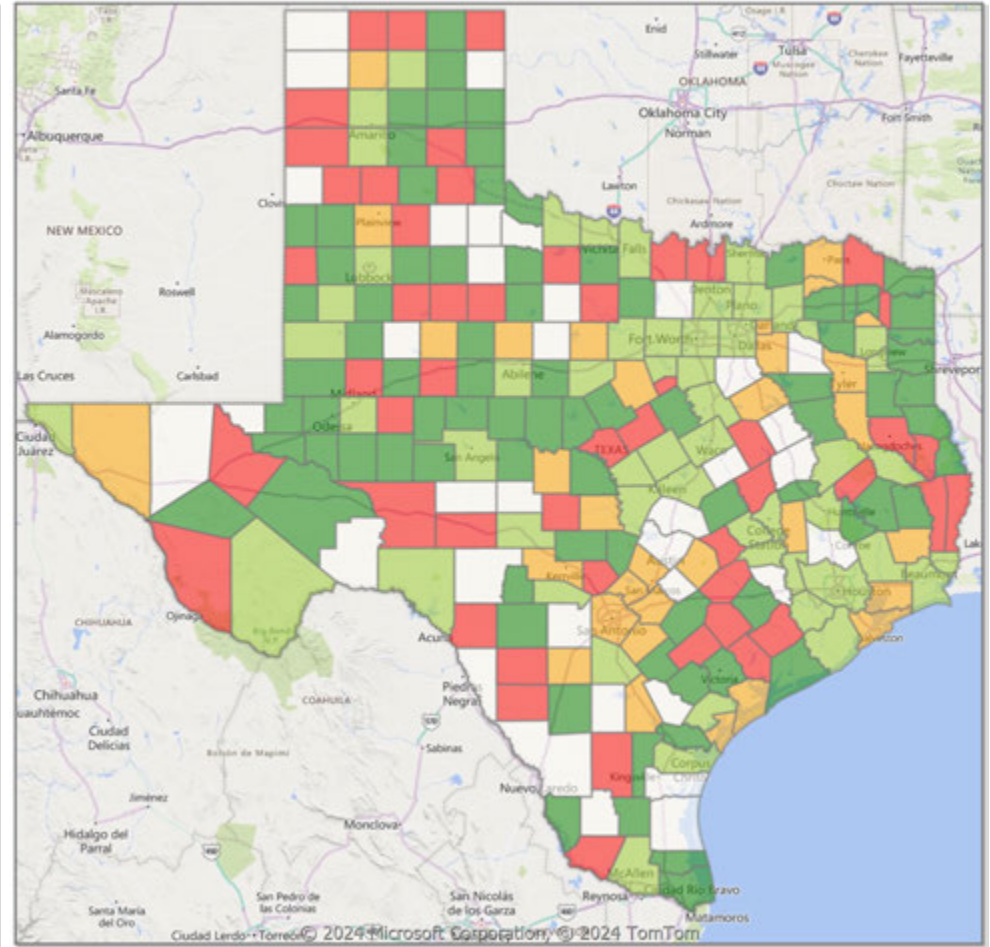


Comparison By County in Texas

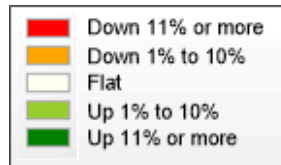
**Residential* Closed Sales
YoY Percentage Change**



**Residential* Avg Close Price Per SqFt
YoY Percentage Change**



* Residential includes Single Family, Condominium and Townhouse.



Market Analysis By Metropolitan Statistical Area: Lubbock

Property Type	Closed Sales*	YoY%	Dollar Volume	YoY%	Average Price	YoY%	Median Price	YoY%	Price/Sqft	YoY%	DOM	New Listings	Active Listings	Pending Sales	Months Inventory	Close To OLP
All(New and Existing)																
Residential (SF/COND/TH)	324	8.0%	\$94,485,670	21.4%	\$291,622	12.4%	\$235,600	4.7%	\$138	4.7%	49	728	1,340	455	3.5	96.3%
YTD:	609	7.8%	\$170,697,334	10.4%	\$280,291	2.4%	\$230,028	-2.1%	\$135	1.8%	50	1,486	1,325	845		95.4%
Single Family	314	7.9%	\$92,409,424	21.6%	\$294,298	12.7%	\$240,000	6.6%	\$138	4.4%	47	703	1,267	441	3.4	96.3%
YTD:	597	9.1%	\$168,341,653	12.2%	\$281,979	2.8%	\$231,050	-3.0%	\$135	1.8%	49	1,433	1,254	821		95.4%
Townhouse	6	0.0%	\$1,248,900	5.8%	\$208,150	5.8%	\$197,000	4.9%	\$130	8.6%	141	21	64	13	8.3	92.6%
YTD:	7	-46.2%	\$1,451,900	-45.4%	\$207,414	1.4%	\$203,000	-1.0%	\$130	2.1%	126	43	62	19		93.3%
Condominium	3	0.0%	\$570,500	-18.4%	\$190,167	-18.4%	\$214,000	-0.5%	\$159	24.3%	11	4	9	1	5.4	98.1%
YTD:	4	-20.0%	\$650,500	-68.1%	\$162,625	-60.2%	\$170,250	-22.6%	\$148	0.7%	17	10	9	5		95.8%

* Closed Sale counts for most recent 3 months are Preliminary.

Existing Home																
Residential (SF/COND/TH)	242	1.7%	\$68,691,595	18.1%	\$283,850	16.1%	\$223,000	7.9%	\$132	6.0%	45	532	956	315	3.2	95.8%
YTD:	445	0.9%	\$119,022,636	4.6%	\$267,467	3.7%	\$217,250	1.1%	\$126	0.9%	48	1,075	935	588		94.6%
Single Family	238	3.0%	\$67,845,239	19.7%	\$285,064	16.2%	\$223,000	7.0%	\$131	5.6%	45	515	914	308	3.1	95.8%
YTD:	438	3.1%	\$117,626,720	7.4%	\$268,554	4.3%	\$218,000	1.4%	\$126	1.0%	48	1,040	897	576		94.5%
Townhouse	1	-75.0%	\$288,000	-63.1%	\$288,000	47.7%	\$288,000	82.9%	\$95	-11.4%	90	13	34	6	10.5	96.3%
YTD:	2	-81.8%	\$491,000	-78.3%	\$245,500	19.5%	\$245,500	19.8%	\$110	-11.1%	64	25	30	7		96.7%
Condominium	3	0.0%	\$570,500	-18.4%	\$190,167	-18.4%	\$214,000	-0.5%	\$159	24.3%	11	4	8	1	4.8	98.1%
YTD:	4	-20.0%	\$650,500	-68.1%	\$162,625	-60.2%	\$170,250	-22.6%	\$148	0.7%	17	10	8	5		95.8%

* Closed Sale counts for most recent 3 months are Preliminary.

New Construction																
Residential (SF/COND/TH)	82	32.3%	\$25,808,824	31.1%	\$314,742	-0.9%	\$265,685	-2.6%	\$159	-2.8%	60	196	384	140	4.4	97.5%
YTD:	165	33.1%	\$51,961,402	27.0%	\$314,918	-4.5%	\$261,970	-10.0%	\$159	-0.4%	55	411	389	257		97.6%
Single Family	76	26.7%	\$24,558,366	27.3%	\$323,136	0.5%	\$273,220	-2.5%	\$160	-2.3%	53	188	353	133	4.3	97.9%
YTD:	159	30.3%	\$50,701,421	25.2%	\$318,877	-4.0%	\$270,000	-8.0%	\$160	-0.2%	52	393	357	245		97.8%
Townhouse	5	150.0%	\$960,900	139.9%	\$192,180	-4.0%	\$189,000	-5.6%	\$138	-5.3%	151	8	30	7	6.8	91.9%
YTD:	5	150.0%	\$960,900	139.9%	\$192,180	-4.0%	\$189,000	-5.6%	\$138	-5.3%	151	18	31	12		91.9%
Condominium	-	0.0%	-	0.0%	-	0.0%	-	0.0%	-	0.0%	-	-	1	0	-	0.0%
YTD:	-	0.0%	-	0.0%	-	0.0%	-	0.0%	-	0.0%	-	0	1	0		0.0%

* Closed Sale counts for most recent 3 months are Preliminary.

Trend Analysis By Metropolitan Statistical Area: Lubbock

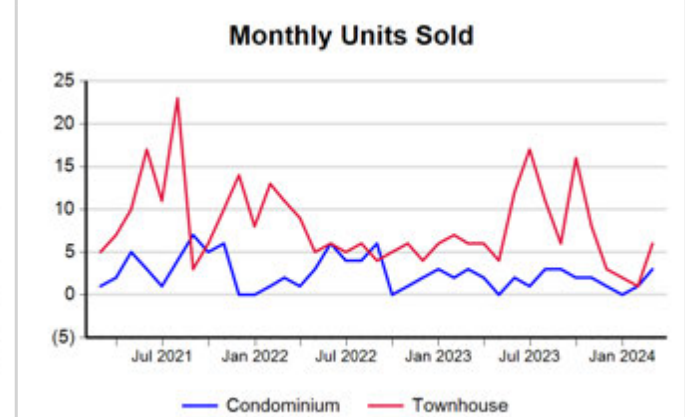
Residential, All (New and Existing)



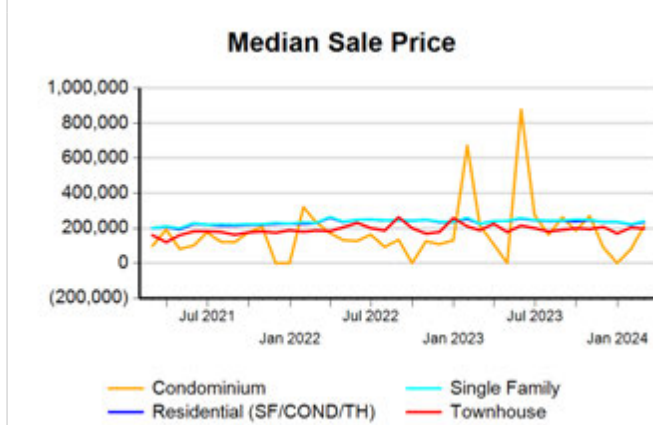
Single Family, New vs. Existing



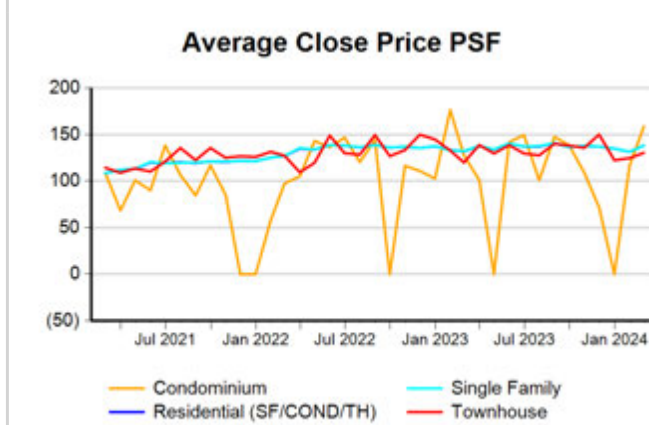
COND/TH, All (New and Existing)



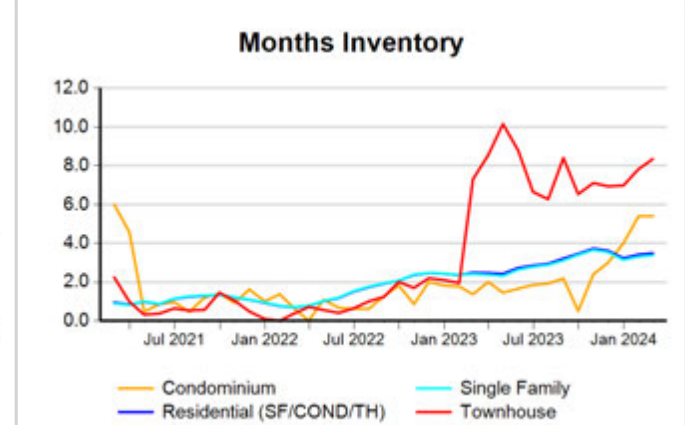
All (New and Existing) Construction



All (New and Existing) Construction



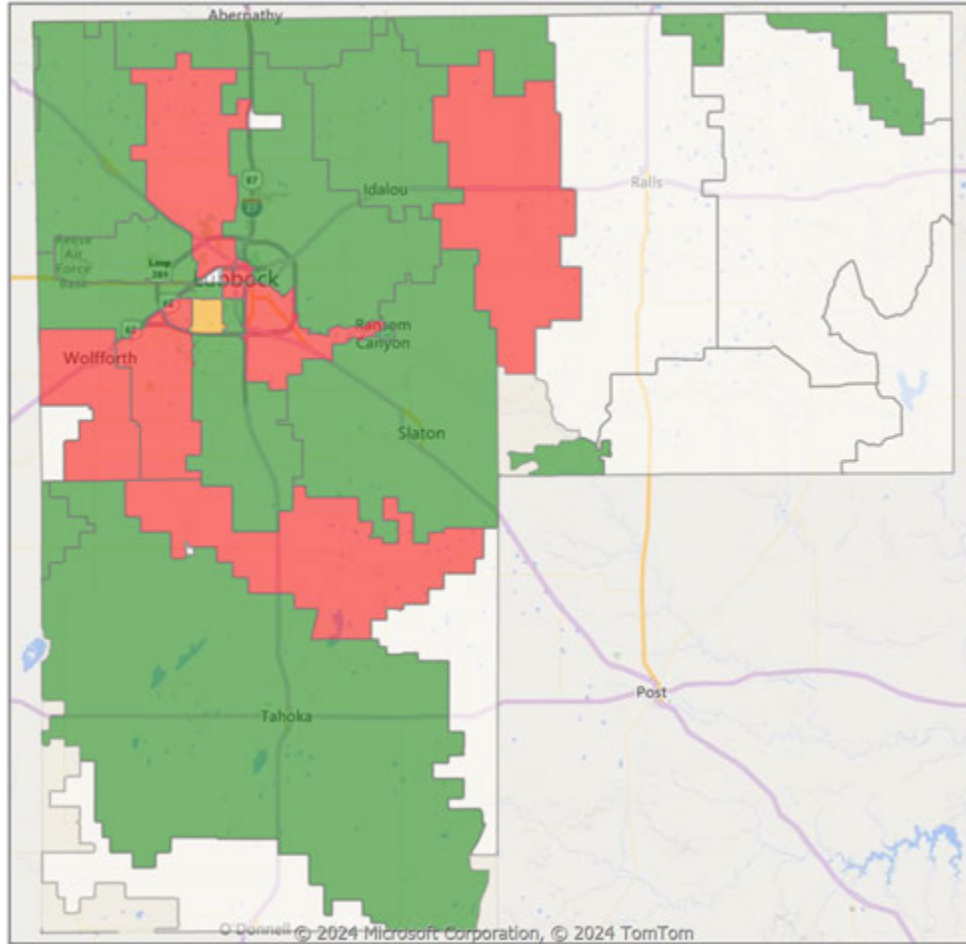
All (New and Existing) Construction



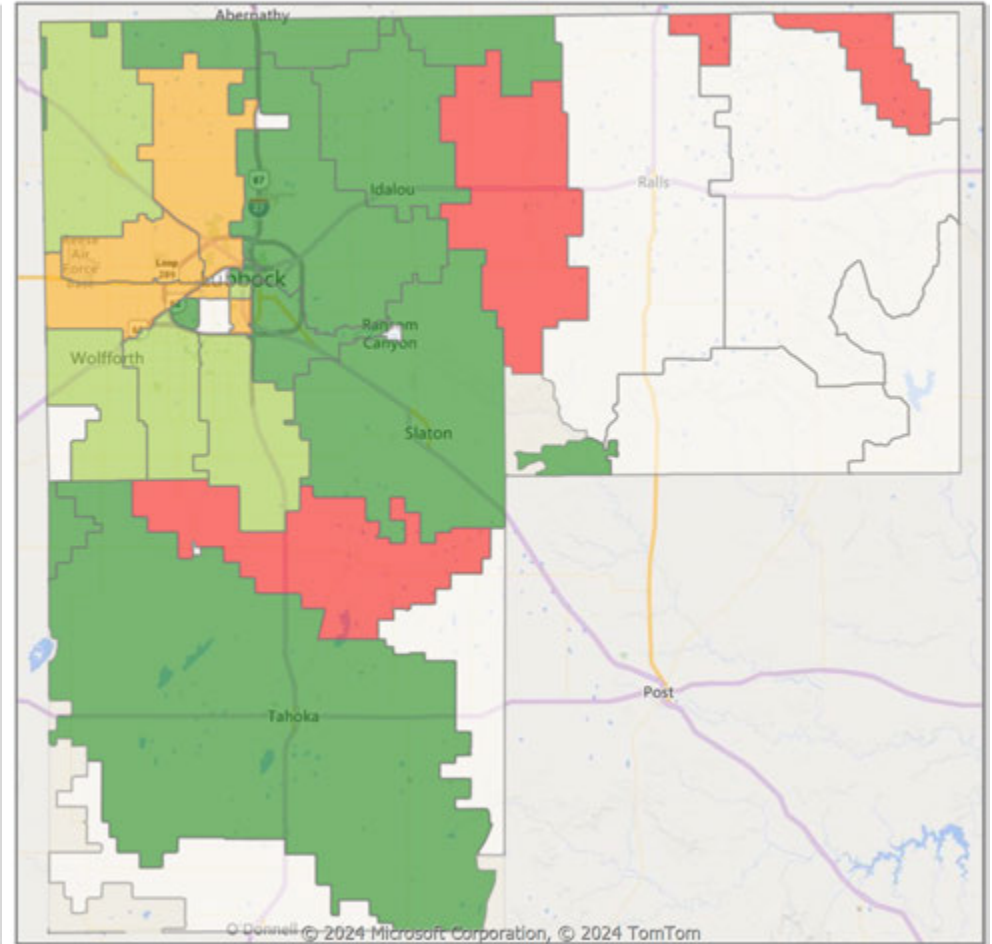
* Closed Sale counts for most recent 3 months are Preliminary.

Comparison By Zip Code* in Lubbock MSA

Residential Closed Sales
YoY Percentage Change**

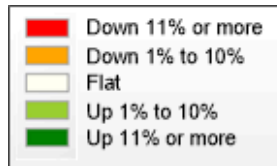


Residential Avg Close Price Per SqFt
YoY Percentage Change**



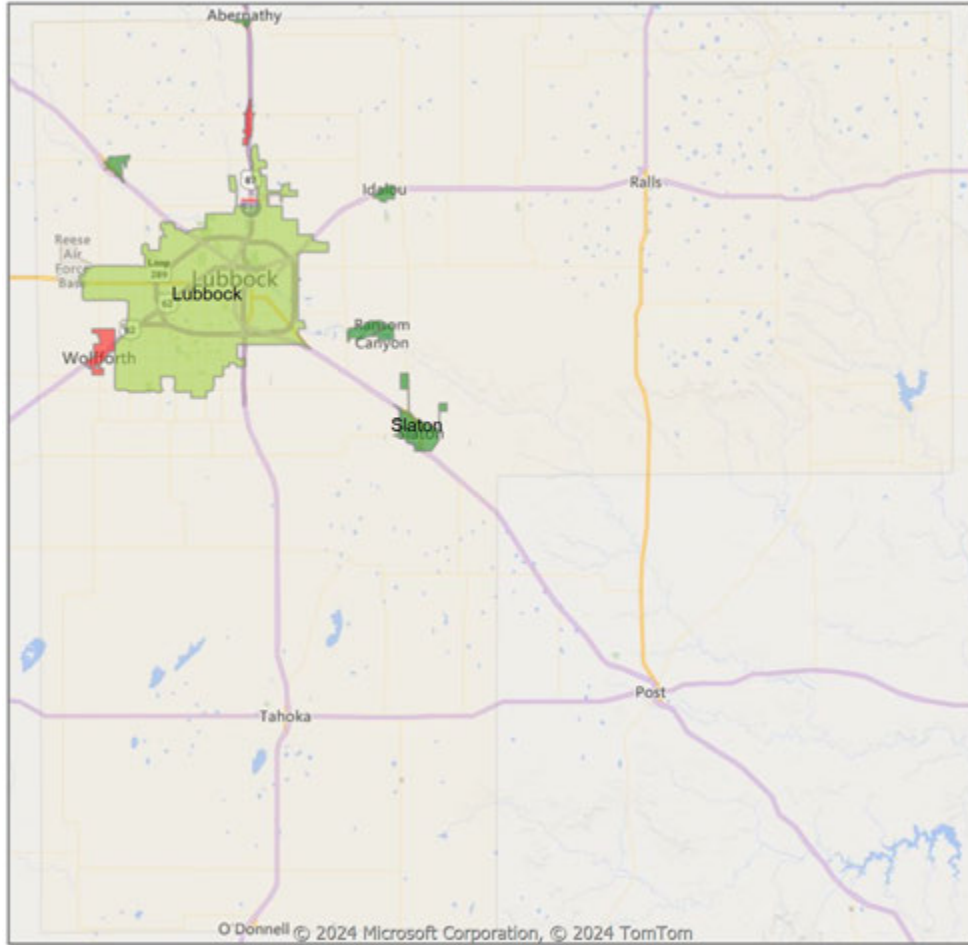
* US Census Zip Code Tabulation Area

** Residential includes Single Family, Condominium and Townhouse.

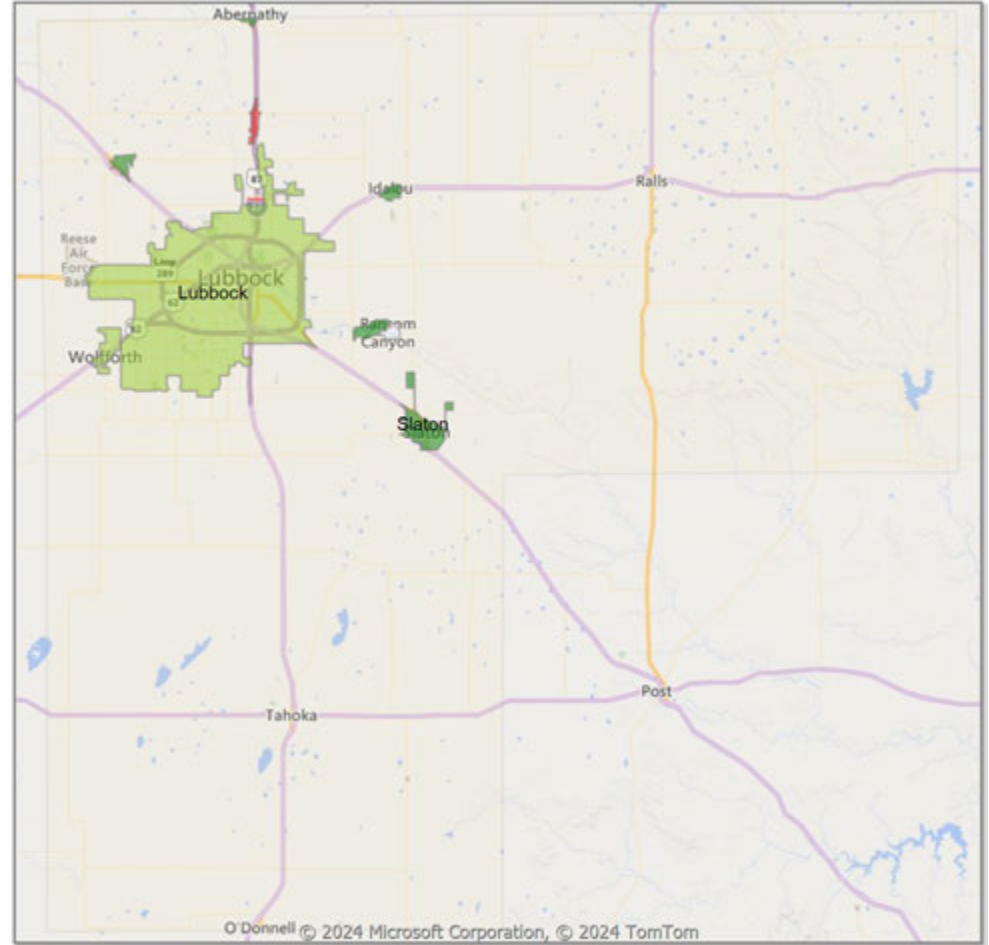


Comparison By Local Market Area* in Lubbock MSA

Residential Closed Sales
YoY Percentage Change**

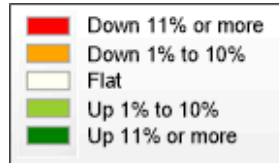


Residential Avg Close Price Per SqFt
YoY Percentage Change**



* Census Place Group

** Residential includes Single Family, Condominium and Townhouse.



Market Analysis By County: Hockley County

Property Type	Closed Sales*	YoY%	Dollar Volume	YoY%	Average Price	YoY%	Median Price	YoY%	Price/Sqft	YoY%	DOM	New Listings	Active Listings	Pending Sales	Months Inventory	Close To OLP
All(New and Existing)																
Residential (SF/COND/TH)	16	23.1%	\$2,818,700	14.3%	\$176,169	-7.2%	\$175,500	-6.4%	\$110	27.1%	79	30	77	29	5.0	97.5%
YTD:	28	21.7%	\$6,011,210	17.7%	\$214,686	-3.4%	\$182,500	-3.7%	\$112	19.8%	82	54	77	47		95.3%
Single Family	16	23.1%	\$2,818,700	14.3%	\$176,169	-7.2%	\$175,500	-6.4%	\$110	27.1%	79	30	76	29	4.9	97.5%
YTD:	28	21.7%	\$6,011,210	17.7%	\$214,686	-3.4%	\$182,500	-3.7%	\$112	19.8%	82	54	76	47		95.3%
Townhouse	-	0.0%	-	0.0%	-	0.0%	-	0.0%	-	0.0%	-	-	-	-	-	0.0%
YTD:	-	0.0%	-	0.0%	-	0.0%	-	0.0%	-	0.0%	-	-	-	-	-	0.0%
Condominium	-	0.0%	-	0.0%	-	0.0%	-	0.0%	-	0.0%	-	-	1	-	-	0.0%
YTD:	-	0.0%	-	0.0%	-	0.0%	-	0.0%	-	0.0%	-	-	1	-	-	0.0%
Existing Home																
Residential (SF/COND/TH)	15	15.4%	\$2,518,800	2.1%	\$167,920	-11.5%	\$175,000	-6.7%	\$107	23.8%	66	27	73	27	4.9	97.7%
YTD:	24	9.1%	\$5,082,200	2.5%	\$211,758	-6.1%	\$182,500	-3.8%	\$107	14.3%	81	50	73	41		94.9%
Single Family	15	15.4%	\$2,518,800	2.1%	\$167,920	-11.5%	\$175,000	-6.7%	\$107	23.8%	66	27	72	27	4.9	97.7%
YTD:	24	9.1%	\$5,082,200	2.5%	\$211,758	-6.1%	\$182,500	-3.8%	\$107	14.3%	81	50	72	41		94.9%
Townhouse	-	0.0%	-	0.0%	-	0.0%	-	0.0%	-	0.0%	-	-	-	-	-	0.0%
YTD:	-	0.0%	-	0.0%	-	0.0%	-	0.0%	-	0.0%	-	-	-	-	-	0.0%
Condominium	-	0.0%	-	0.0%	-	0.0%	-	0.0%	-	0.0%	-	-	1	-	-	0.0%
YTD:	-	0.0%	-	0.0%	-	0.0%	-	0.0%	-	0.0%	-	-	1	-	-	0.0%
New Construction																
Residential (SF/COND/TH)	1	100.0%	\$299,900	100.0%	\$299,900	100.0%	\$299,900	100.0%	\$151	100.0%	263	3	4	2	5.3	95.2%
YTD:	4	300.0%	\$929,010	523.5%	\$232,253	55.9%	\$224,765	50.9%	\$145	46.0%	88	4	4	6		97.5%
Single Family	1	100.0%	\$299,900	100.0%	\$299,900	100.0%	\$299,900	100.0%	\$151	100.0%	263	3	4	2	5.3	95.2%
YTD:	4	300.0%	\$929,010	523.5%	\$232,253	55.9%	\$224,765	50.9%	\$145	46.0%	88	4	4	6		97.5%
Townhouse	-	0.0%	-	0.0%	-	0.0%	-	0.0%	-	0.0%	-	-	-	-	-	0.0%
YTD:	-	0.0%	-	0.0%	-	0.0%	-	0.0%	-	0.0%	-	-	-	-	-	0.0%
Condominium	-	0.0%	-	0.0%	-	0.0%	-	0.0%	-	0.0%	-	-	-	-	-	0.0%
YTD:	-	0.0%	-	0.0%	-	0.0%	-	0.0%	-	0.0%	-	-	-	-	-	0.0%

* Closed Sale counts for most recent 3 months are Preliminary.

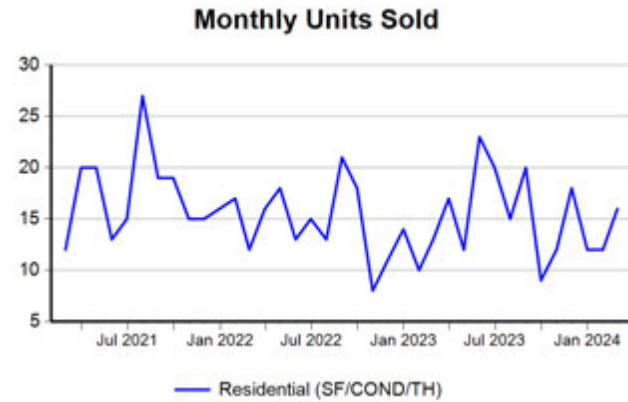
Market Analysis By County: Lubbock County

Property Type	Closed Sales*	YoY%	Dollar Volume	YoY%	Average Price	YoY%	Median Price	YoY%	Price/Sqft	YoY%	DOM	New Listings	Active Listings	Pending Sales	Months Inventory	Close To OLP
All(New and Existing)																
Residential (SF/COND/TH)	318	8.2%	\$91,234,572	18.5%	\$286,901	9.6%	\$235,000	4.4%	\$139	3.9%	48	706	1,288	449	3.4	96.3%
YTD:	596	7.4%	\$165,440,834	7.8%	\$277,585	0.4%	\$230,000	-3.4%	\$135	1.0%	50	1,446	1,277	835		95.4%
Single Family	308	7.7%	\$89,161,882	18.4%	\$289,487	10.0%	\$238,335	5.5%	\$139	3.9%	47	681	1,215	435	3.3	96.4%
YTD:	584	8.6%	\$163,087,638	9.5%	\$279,260	0.9%	\$231,025	-3.7%	\$135	1.1%	49	1,393	1,206	811		95.5%
Townhouse	6	0.0%	\$1,248,900	5.8%	\$208,150	5.8%	\$197,000	4.9%	\$130	8.6%	141	21	64	13	8.3	92.6%
YTD:	7	-46.2%	\$1,451,900	-45.4%	\$207,414	1.4%	\$203,000	-1.0%	\$130	2.1%	126	43	62	19		93.3%
Condominium	3	50.0%	\$570,500	11.0%	\$190,167	-26.0%	\$214,000	-16.7%	\$159	-4.5%	11	4	9	1	5.4	98.1%
YTD:	4	0.0%	\$650,500	-65.0%	\$162,625	-65.0%	\$170,250	-34.4%	\$148	-13.5%	17	10	9	5		95.8%
Existing Home																
Residential (SF/COND/TH)	237	2.2%	\$65,710,702	14.7%	\$277,260	12.3%	\$221,000	5.7%	\$132	5.1%	45	515	914	310	3.1	96.0%
YTD:	435	0.9%	\$115,249,302	2.4%	\$264,941	1.5%	\$218,000	1.2%	\$127	0.1%	48	1,041	896	580		94.6%
Single Family	233	3.1%	\$64,863,438	15.8%	\$278,384	12.3%	\$221,000	5.7%	\$132	4.9%	45	498	872	303	3.0	95.9%
YTD:	428	2.9%	\$113,855,788	5.0%	\$266,018	2.1%	\$218,500	1.4%	\$127	0.2%	48	1,006	858	568		94.6%
Townhouse	1	-75.0%	\$288,000	-63.1%	\$288,000	47.7%	\$288,000	82.9%	\$95	-11.4%	90	13	34	6	10.5	96.3%
YTD:	2	-81.8%	\$491,000	-78.3%	\$245,500	19.5%	\$245,500	19.8%	\$110	-11.1%	64	25	30	7		96.7%
Condominium	3	50.0%	\$570,500	11.0%	\$190,167	-26.0%	\$214,000	-16.7%	\$159	-4.5%	11	4	8	1	4.8	98.1%
YTD:	4	0.0%	\$650,500	-65.0%	\$162,625	-65.0%	\$170,250	-34.4%	\$148	-13.5%	17	10	8	5		95.8%
New Construction																
Residential (SF/COND/TH)	81	30.7%	\$25,541,148	29.7%	\$315,323	-0.7%	\$263,950	-3.2%	\$159	-2.7%	57	191	374	139	4.3	97.5%
YTD:	162	30.7%	\$50,474,674	23.4%	\$311,572	-5.6%	\$257,380	-11.6%	\$159	-0.7%	54	405	380	255		97.6%
Single Family	75	25.0%	\$24,290,580	25.9%	\$323,874	0.7%	\$274,105	-2.1%	\$161	-2.1%	51	183	343	132	4.2	97.9%
YTD:	156	27.9%	\$49,217,912	21.5%	\$315,499	-5.0%	\$265,685	-9.5%	\$159	-0.4%	51	387	348	243		97.8%
Townhouse	5	150.0%	\$960,900	139.9%	\$192,180	-4.0%	\$189,000	-5.6%	\$138	-5.3%	151	8	30	7	6.8	91.9%
YTD:	5	150.0%	\$960,900	139.9%	\$192,180	-4.0%	\$189,000	-5.6%	\$138	-5.3%	151	18	31	12		91.9%
Condominium	-	0.0%	-	0.0%	-	0.0%	-	0.0%	-	0.0%	-	-	1	-	-	0.0%
YTD:	-	0.0%	-	0.0%	-	0.0%	-	0.0%	-	0.0%	-	-	1	-		0.0%

* Closed Sale counts for most recent 3 months are Preliminary.

Trend Analysis By County: Hockley County

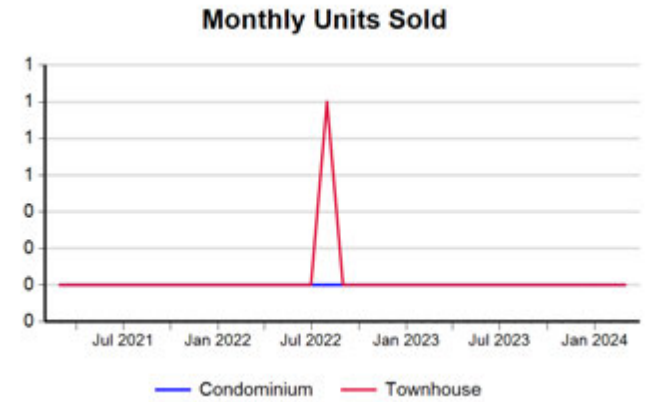
Residential, All (New and Existing)



Single Family, New vs. Existing



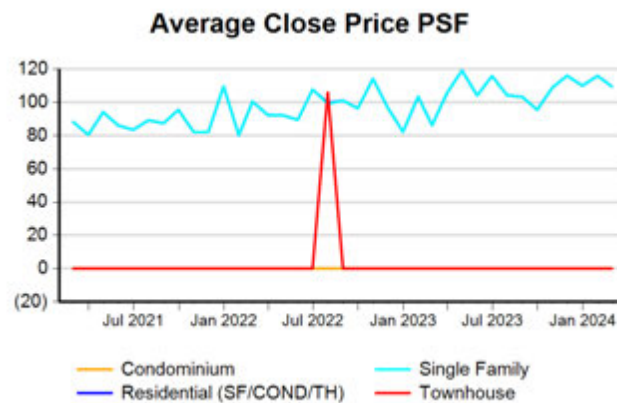
COND/TH, All (New and Existing)



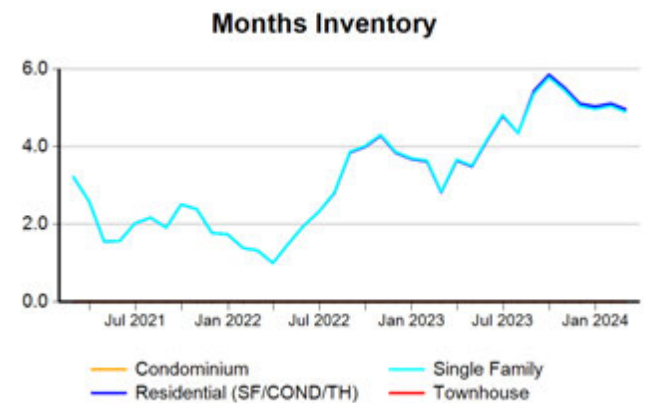
All (New and Existing) Construction



All (New and Existing) Construction



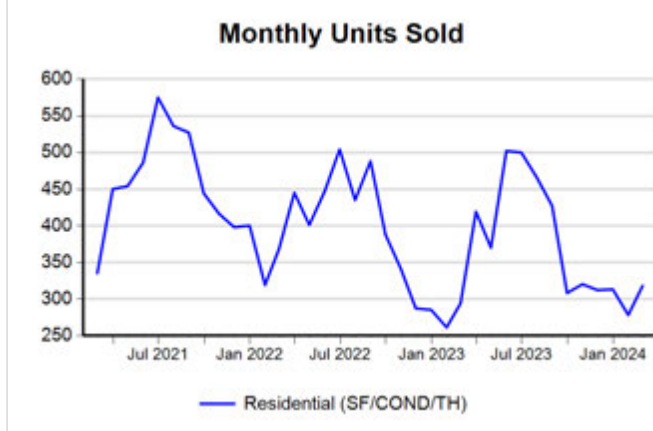
All (New and Existing) Construction



* Closed Sale counts for most recent 3 months are Preliminary.

Trend Analysis By County: Lubbock County

Residential, All (New and Existing)



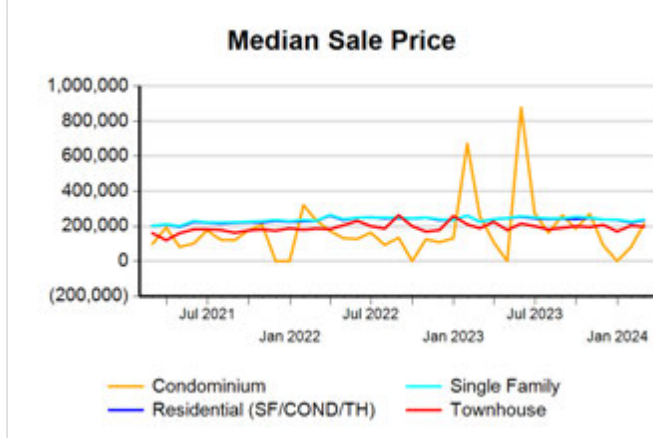
Single Family, New vs. Existing



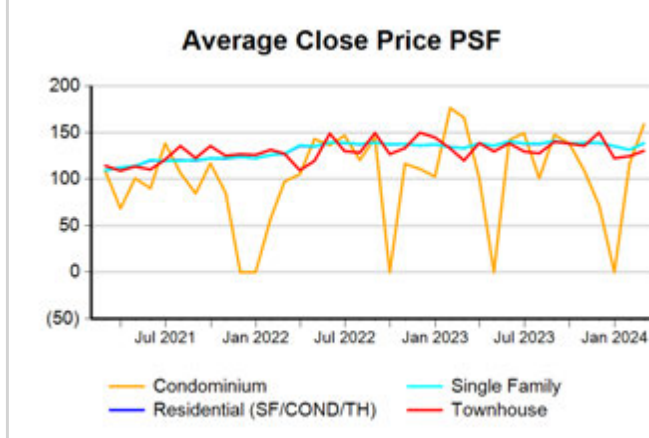
COND/TH, All (New and Existing)



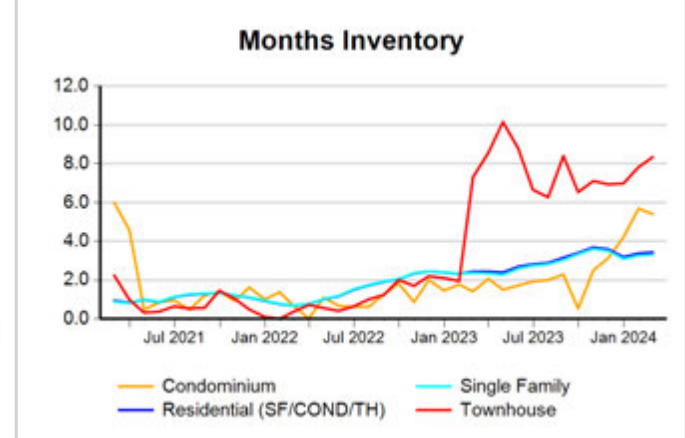
All (New and Existing) Construction



All (New and Existing) Construction



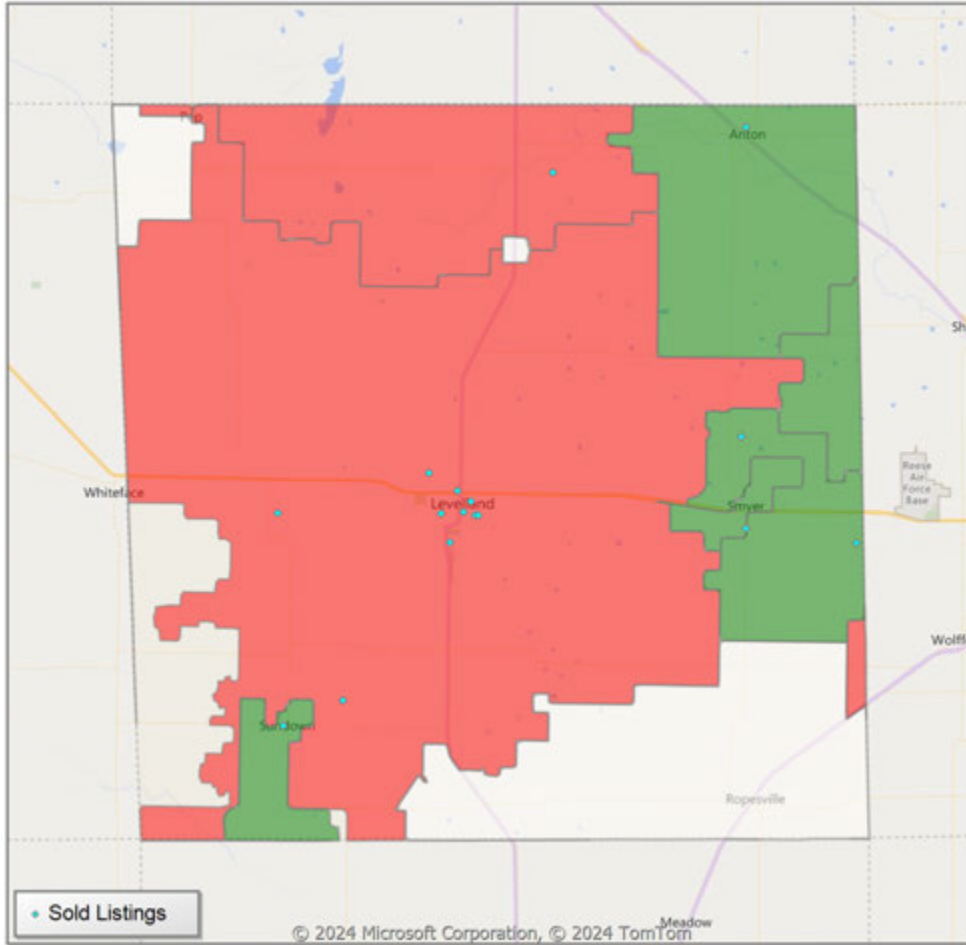
All (New and Existing) Construction



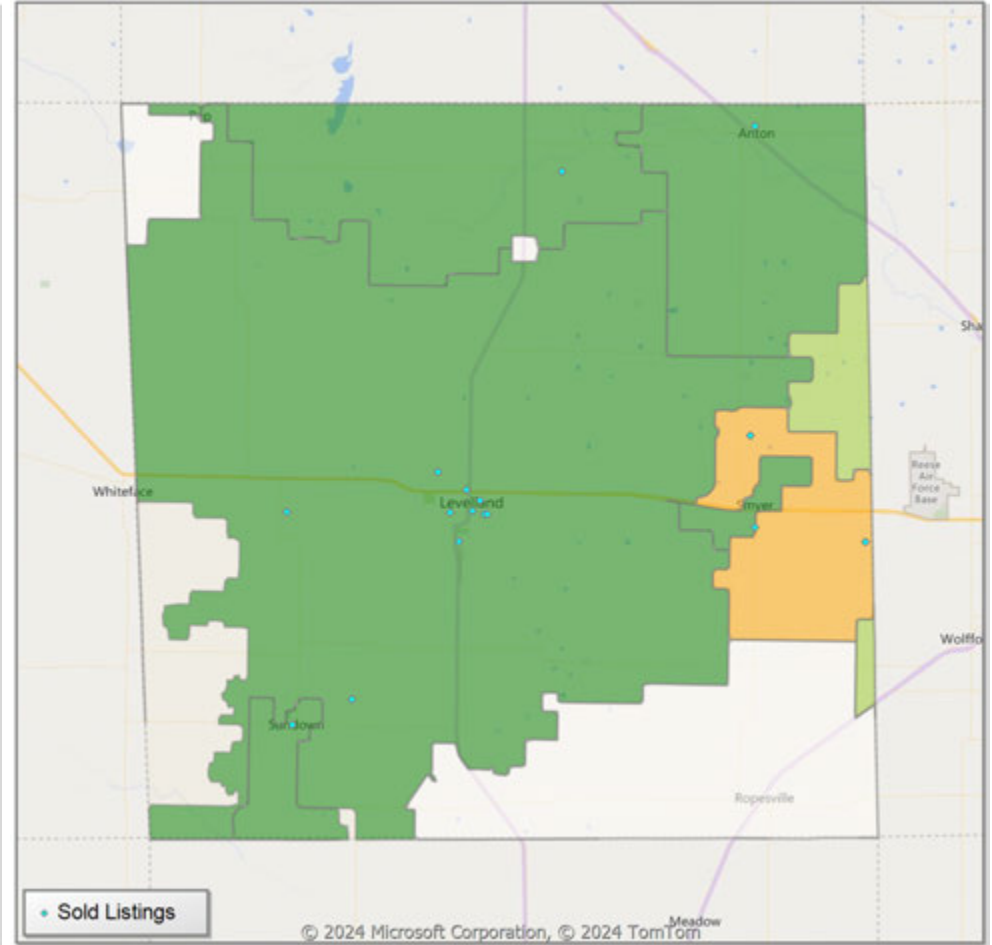
* Closed Sale counts for most recent 3 months are Preliminary.

Comparison By Zip Code* in Hockley County

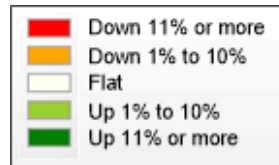
Residential Closed Sales
YoY Percentage Change**



Residential Avg Close Price Per SqFt
YoY Percentage Change**

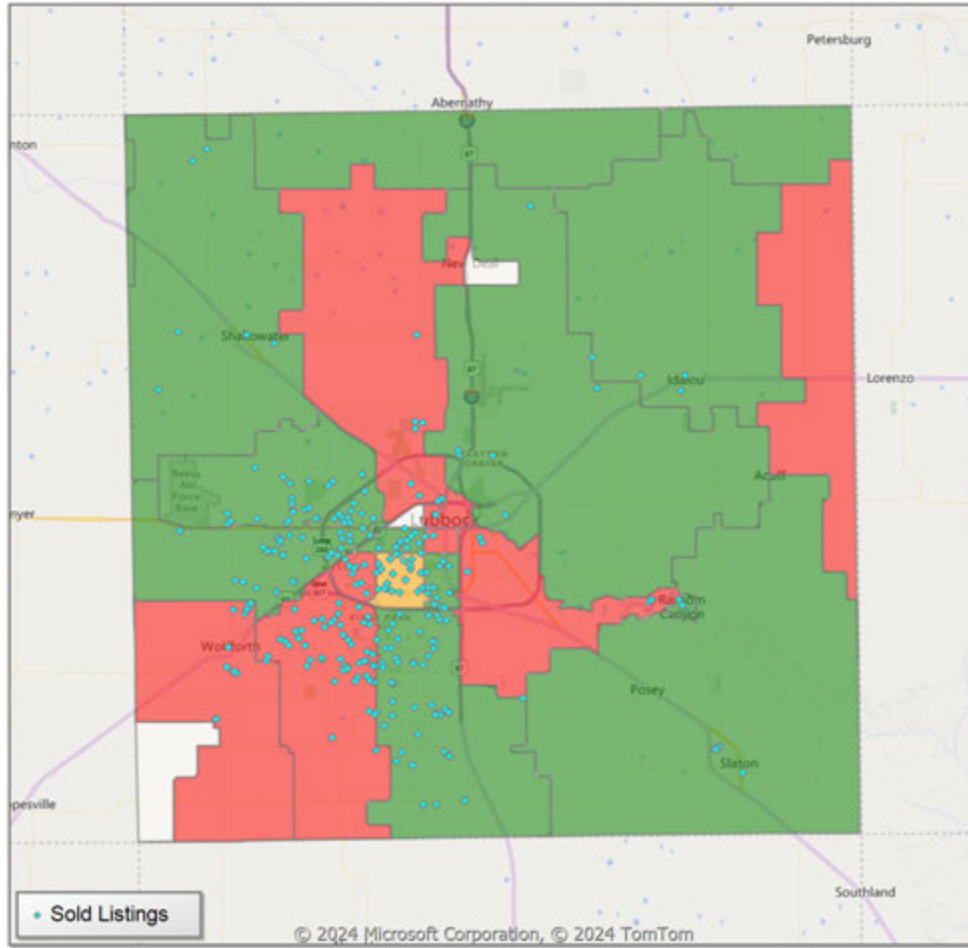


* US Census Zip Code Tabulation Area
** Residential includes Single Family, Condominium and Townhouse.

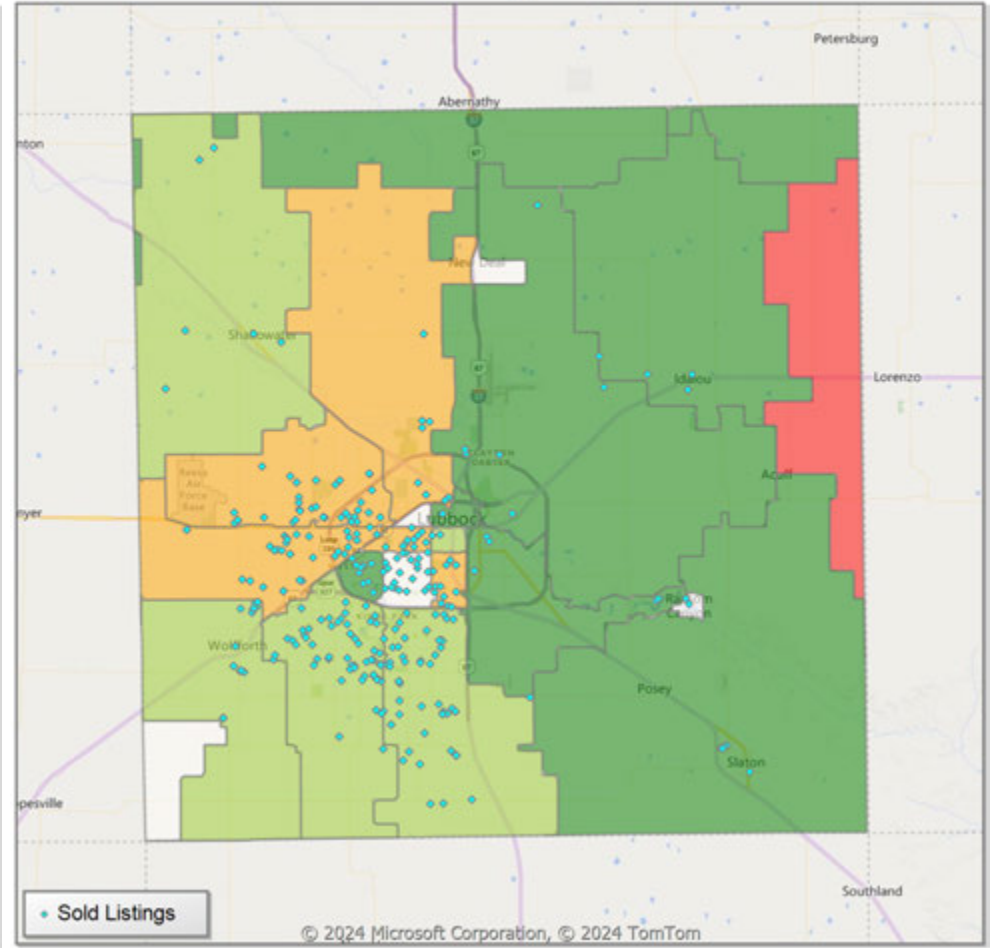


Comparison By Zip Code* in Lubbock County

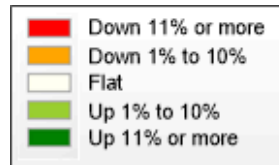
Residential Closed Sales
YoY Percentage Change**



Residential Avg Close Price Per SqFt
YoY Percentage Change**

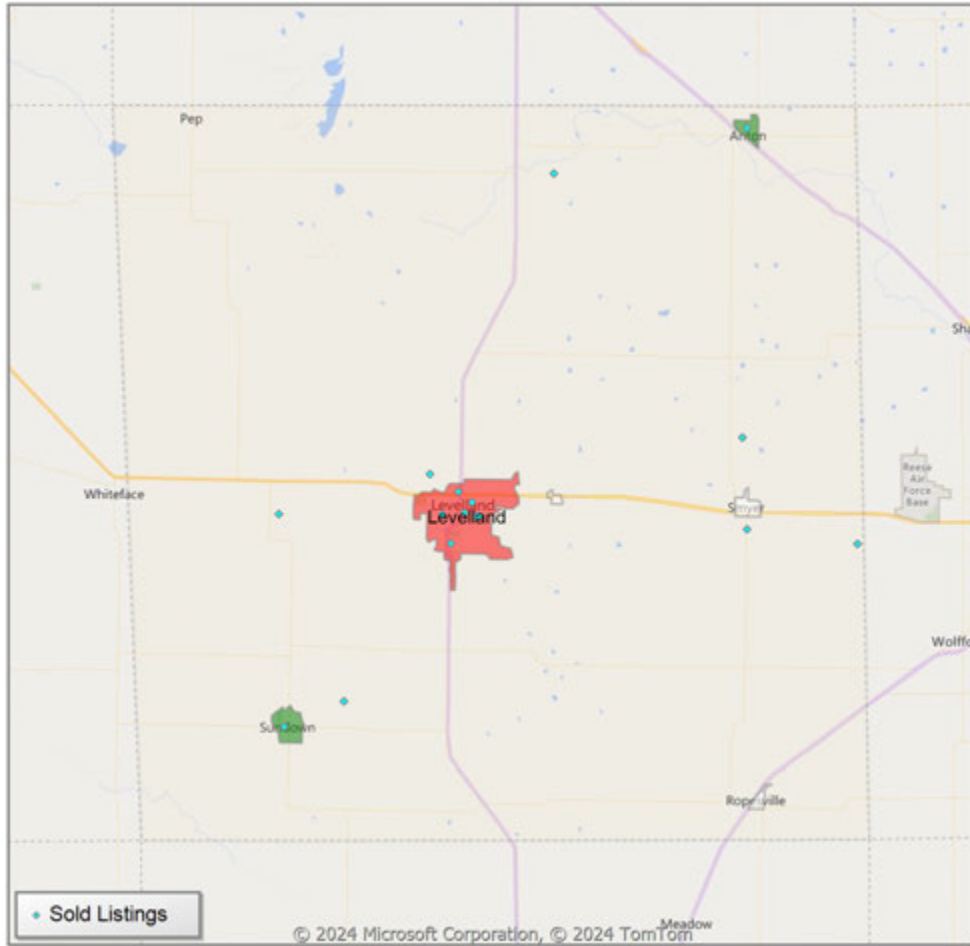


* US Census Zip Code Tabulation Area
** Residential includes Single Family, Condominium and Townhouse.

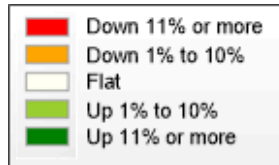
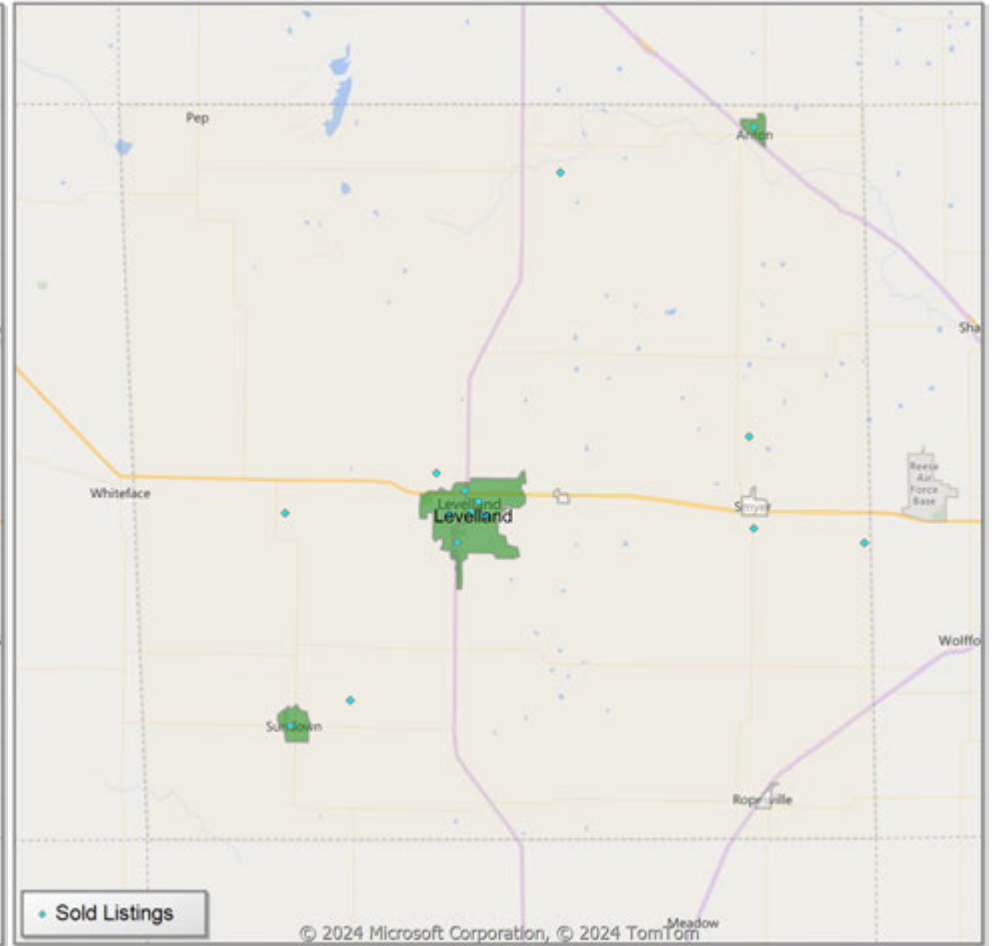


Comparison By Local Market Area* in Hockley County

Residential Closed Sales
YoY Percentage Change**



Residential Avg Close Price Per SqFt
YoY Percentage Change**

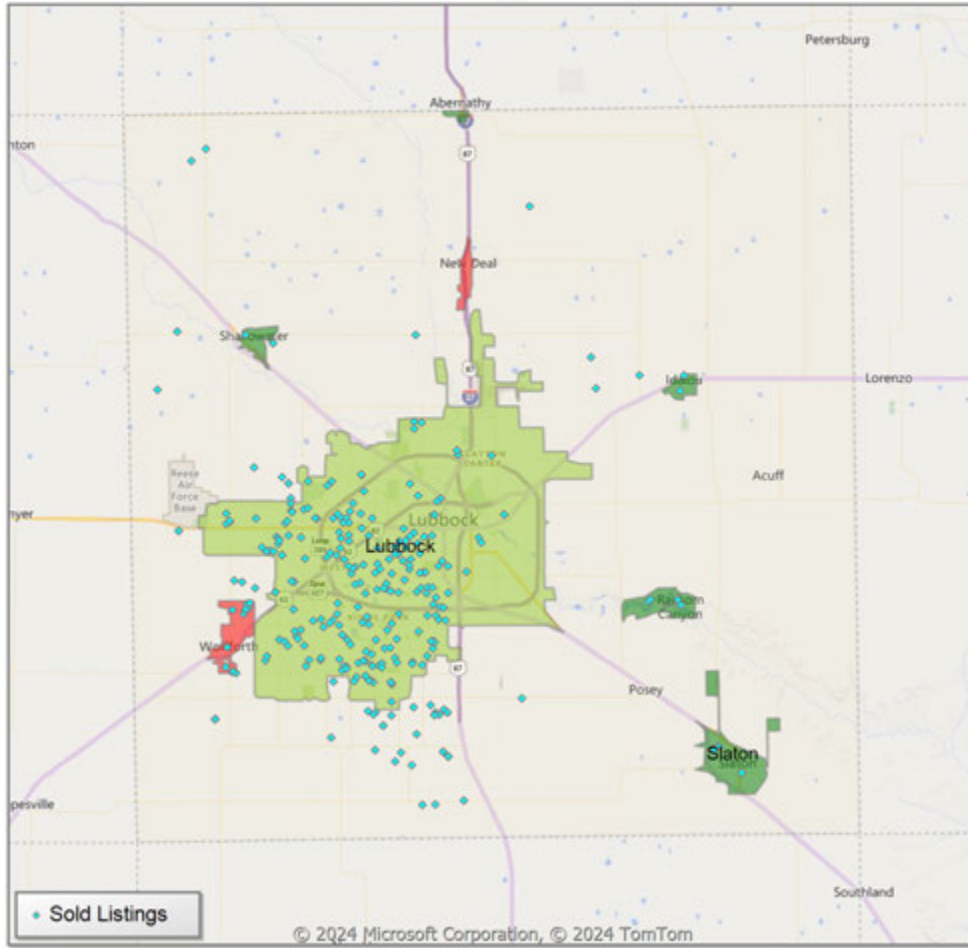


* Census Place Group

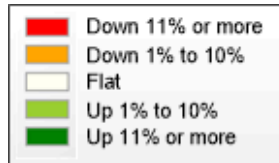
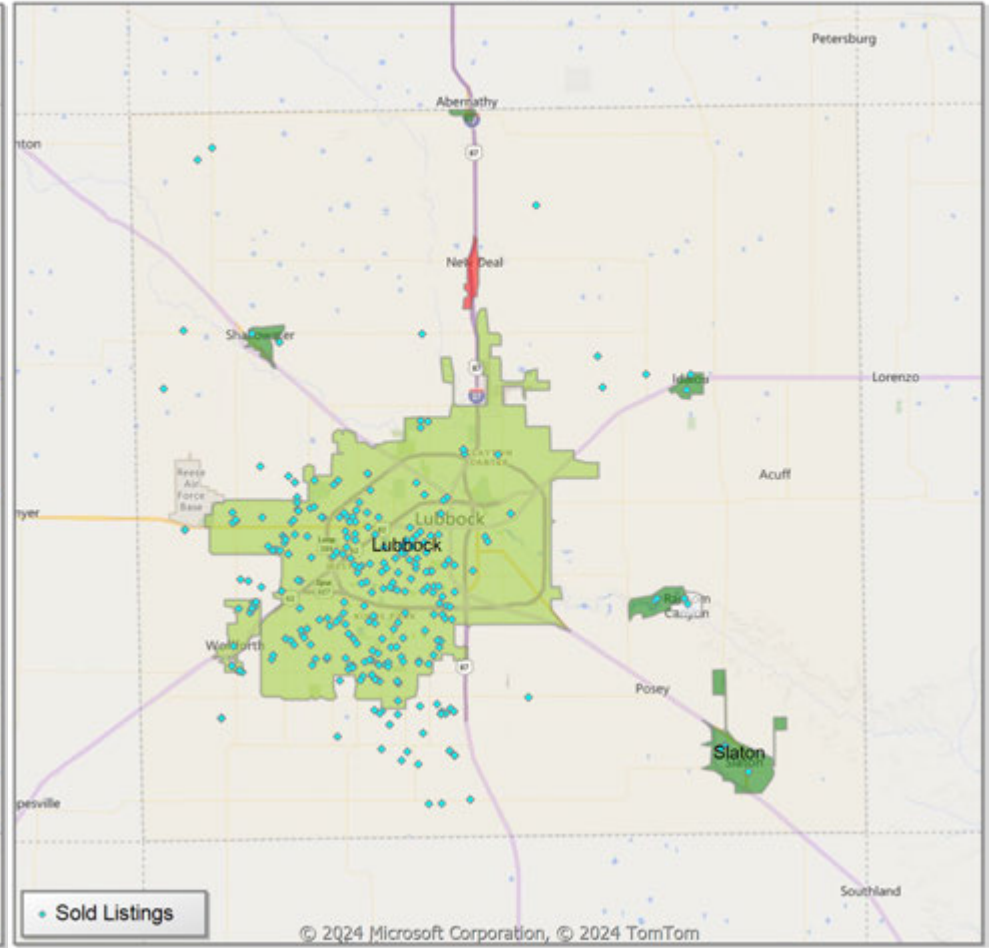
** Residential includes Single Family, Condominium and Townhouse.

Comparison By Local Market Area* in Lubbock County

Residential Closed Sales
YoY Percentage Change**



Residential Avg Close Price Per SqFt
YoY Percentage Change**



* Census Place Group

** Residential includes Single Family, Condominium and Townhouse.

Market Analysis By Local Market Area*: Abernathy

Property Type	Closed Sales**	YoY%	Dollar Volume	YoY%	Average Price	YoY%	Median Price	YoY%	Price/Sqft	YoY%	DOM	New Listings	Active Listings	Pending Sales	Months Inventory	Close To OLP
All(New and Existing)																
Residential (SF/COND/TH)	1	100.0%	\$165,000	100.0%	\$165,000	100.0%	\$165,000	100.0%	\$87	100.0%	19	5	10	2	5.2	97.1%
YTD:	2	100.0%	\$338,000	69.0%	\$169,000	-15.5%	\$169,000	-15.5%	\$109	41.9%	27	8	8	5		98.0%
Single Family	1	100.0%	\$165,000	100.0%	\$165,000	100.0%	\$165,000	100.0%	\$87	100.0%	19	5	10	2	5.2	97.1%
YTD:	2	100.0%	\$338,000	69.0%	\$169,000	-15.5%	\$169,000	-15.5%	\$109	41.9%	27	8	8	5		98.0%
Townhouse	-	0.0%	-	0.0%	-	0.0%	-	0.0%	-	0.0%	-	-	-	-	-	0.0%
YTD:	-	0.0%	-	0.0%	-	0.0%	-	0.0%	-	0.0%	-	-	-	-	-	0.0%
Condominium	-	0.0%	-	0.0%	-	0.0%	-	0.0%	-	0.0%	-	-	-	-	-	0.0%
YTD:	-	0.0%	-	0.0%	-	0.0%	-	0.0%	-	0.0%	-	-	-	-	-	0.0%
Existing Home																
Residential (SF/COND/TH)	1	100.0%	\$165,000	100.0%	\$165,000	100.0%	\$165,000	100.0%	\$87	100.0%	19	5	10	2	5.2	97.1%
YTD:	2	100.0%	\$338,000	69.0%	\$169,000	-15.5%	\$169,000	-15.5%	\$109	41.9%	27	8	8	5		98.0%
Single Family	1	100.0%	\$165,000	100.0%	\$165,000	100.0%	\$165,000	100.0%	\$87	100.0%	19	5	10	2	5.2	97.1%
YTD:	2	100.0%	\$338,000	69.0%	\$169,000	-15.5%	\$169,000	-15.5%	\$109	41.9%	27	8	8	5		98.0%
Townhouse	-	0.0%	-	0.0%	-	0.0%	-	0.0%	-	0.0%	-	-	-	-	-	0.0%
YTD:	-	0.0%	-	0.0%	-	0.0%	-	0.0%	-	0.0%	-	-	-	-	-	0.0%
Condominium	-	0.0%	-	0.0%	-	0.0%	-	0.0%	-	0.0%	-	-	-	-	-	0.0%
YTD:	-	0.0%	-	0.0%	-	0.0%	-	0.0%	-	0.0%	-	-	-	-	-	0.0%
New Construction																
Residential (SF/COND/TH)	-	0.0%	-	0.0%	-	0.0%	-	0.0%	-	0.0%	-	-	-	-	-	0.0%
YTD:	-	0.0%	-	0.0%	-	0.0%	-	0.0%	-	0.0%	-	-	-	-	-	0.0%
Single Family	-	0.0%	-	0.0%	-	0.0%	-	0.0%	-	0.0%	-	-	-	-	-	0.0%
YTD:	-	0.0%	-	0.0%	-	0.0%	-	0.0%	-	0.0%	-	-	-	-	-	0.0%
Townhouse	-	0.0%	-	0.0%	-	0.0%	-	0.0%	-	0.0%	-	-	-	-	-	0.0%
YTD:	-	0.0%	-	0.0%	-	0.0%	-	0.0%	-	0.0%	-	-	-	-	-	0.0%
Condominium	-	0.0%	-	0.0%	-	0.0%	-	0.0%	-	0.0%	-	-	-	-	-	0.0%
YTD:	-	0.0%	-	0.0%	-	0.0%	-	0.0%	-	0.0%	-	-	-	-	-	0.0%

* Local Market Area Code: 2; Type: Census Place Group
 ** Closed Sale counts for most recent 3 months are Preliminary.

Market Analysis By Local Market Area*: Anton

Property Type	Closed Sales**	YoY%	Dollar Volume	YoY%	Average Price	YoY%	Median Price	YoY%	Price/Sqft	YoY%	DOM	New Listings	Active Listings	Pending Sales	Months Inventory	Close To OLP
All(New and Existing)																
Residential (SF/COND/TH)	1	100.0%	\$135,000	100.0%	\$135,000	100.0%	\$135,000	100.0%	\$83	100.0%	71	2	2	1	2.4	93.1%
YTD:	1	0.0%	\$135,000	80.0%	\$135,000	80.0%	\$135,000	80.0%	\$83	50.8%	71	3	2	2		93.1%
Single Family	1	100.0%	\$135,000	100.0%	\$135,000	100.0%	\$135,000	100.0%	\$83	100.0%	71	2	2	1	2.4	93.1%
YTD:	1	0.0%	\$135,000	80.0%	\$135,000	80.0%	\$135,000	80.0%	\$83	50.8%	71	3	2	2		93.1%
Townhouse	-	0.0%	-	0.0%	-	0.0%	-	0.0%	-	0.0%	-	-	-	-	-	0.0%
YTD:	-	0.0%	-	0.0%	-	0.0%	-	0.0%	-	0.0%	-	-	-	-	-	0.0%
Condominium	-	0.0%	-	0.0%	-	0.0%	-	0.0%	-	0.0%	-	-	-	-	-	0.0%
YTD:	-	0.0%	-	0.0%	-	0.0%	-	0.0%	-	0.0%	-	-	-	-	-	0.0%
Existing Home																
Residential (SF/COND/TH)	1	100.0%	\$135,000	100.0%	\$135,000	100.0%	\$135,000	100.0%	\$83	100.0%	71	2	2	1	2.4	93.1%
YTD:	1	0.0%	\$135,000	80.0%	\$135,000	80.0%	\$135,000	80.0%	\$83	50.8%	71	3	2	2		93.1%
Single Family	1	100.0%	\$135,000	100.0%	\$135,000	100.0%	\$135,000	100.0%	\$83	100.0%	71	2	2	1	2.4	93.1%
YTD:	1	0.0%	\$135,000	80.0%	\$135,000	80.0%	\$135,000	80.0%	\$83	50.8%	71	3	2	2		93.1%
Townhouse	-	0.0%	-	0.0%	-	0.0%	-	0.0%	-	0.0%	-	-	-	-	-	0.0%
YTD:	-	0.0%	-	0.0%	-	0.0%	-	0.0%	-	0.0%	-	-	-	-	-	0.0%
Condominium	-	0.0%	-	0.0%	-	0.0%	-	0.0%	-	0.0%	-	-	-	-	-	0.0%
YTD:	-	0.0%	-	0.0%	-	0.0%	-	0.0%	-	0.0%	-	-	-	-	-	0.0%
New Construction																
Residential (SF/COND/TH)	-	0.0%	-	0.0%	-	0.0%	-	0.0%	-	0.0%	-	-	-	-	-	0.0%
YTD:	-	0.0%	-	0.0%	-	0.0%	-	0.0%	-	0.0%	-	-	-	-	-	0.0%
Single Family	-	0.0%	-	0.0%	-	0.0%	-	0.0%	-	0.0%	-	-	-	-	-	0.0%
YTD:	-	0.0%	-	0.0%	-	0.0%	-	0.0%	-	0.0%	-	-	-	-	-	0.0%
Townhouse	-	0.0%	-	0.0%	-	0.0%	-	0.0%	-	0.0%	-	-	-	-	-	0.0%
YTD:	-	0.0%	-	0.0%	-	0.0%	-	0.0%	-	0.0%	-	-	-	-	-	0.0%
Condominium	-	0.0%	-	0.0%	-	0.0%	-	0.0%	-	0.0%	-	-	-	-	-	0.0%
YTD:	-	0.0%	-	0.0%	-	0.0%	-	0.0%	-	0.0%	-	-	-	-	-	0.0%

* Local Market Area Code: 1014; Type: Census Place Group
 ** Closed Sale counts for most recent 3 months are Preliminary.

Market Analysis By Local Market Area*: Buffalo Springs

Property Type	Closed Sales**	YoY%	Dollar Volume	YoY%	Average Price	YoY%	Median Price	YoY%	Price/Sqft	YoY%	DOM	New Listings	Active Listings	Pending Sales	Months Inventory	Close To OLP
All(New and Existing)																
Residential (SF/COND/TH)	2	100.0%	\$615,000	100.0%	\$307,500	100.0%	\$307,500	100.0%	\$149	100.0%	14	2	2	2	2.7	95.4%
YTD:	2	100.0%	\$615,000	108.5%	\$307,500	4.2%	\$307,500	4.2%	\$149	-5.4%	14	4	1	3		95.4%
Single Family	2	100.0%	\$615,000	100.0%	\$307,500	100.0%	\$307,500	100.0%	\$149	100.0%	14	2	2	2	2.7	95.4%
YTD:	2	100.0%	\$615,000	108.5%	\$307,500	4.2%	\$307,500	4.2%	\$149	-5.4%	14	4	1	3		95.4%
Townhouse	-	0.0%	-	0.0%	-	0.0%	-	0.0%	-	0.0%	-	-	-	-	-	0.0%
YTD:	-	0.0%	-	0.0%	-	0.0%	-	0.0%	-	0.0%	-	-	-	-	-	0.0%
Condominium	-	0.0%	-	0.0%	-	0.0%	-	0.0%	-	0.0%	-	-	-	-	-	0.0%
YTD:	-	0.0%	-	0.0%	-	0.0%	-	0.0%	-	0.0%	-	-	-	-	-	0.0%
Existing Home																
Residential (SF/COND/TH)	2	100.0%	\$615,000	100.0%	\$307,500	100.0%	\$307,500	100.0%	\$149	100.0%	14	2	2	2	2.7	95.4%
YTD:	2	100.0%	\$615,000	108.5%	\$307,500	4.2%	\$307,500	4.2%	\$149	-5.4%	14	4	1	3		95.4%
Single Family	2	100.0%	\$615,000	100.0%	\$307,500	100.0%	\$307,500	100.0%	\$149	100.0%	14	2	2	2	2.7	95.4%
YTD:	2	100.0%	\$615,000	108.5%	\$307,500	4.2%	\$307,500	4.2%	\$149	-5.4%	14	4	1	3		95.4%
Townhouse	-	0.0%	-	0.0%	-	0.0%	-	0.0%	-	0.0%	-	-	-	-	-	0.0%
YTD:	-	0.0%	-	0.0%	-	0.0%	-	0.0%	-	0.0%	-	-	-	-	-	0.0%
Condominium	-	0.0%	-	0.0%	-	0.0%	-	0.0%	-	0.0%	-	-	-	-	-	0.0%
YTD:	-	0.0%	-	0.0%	-	0.0%	-	0.0%	-	0.0%	-	-	-	-	-	0.0%
New Construction																
Residential (SF/COND/TH)	-	0.0%	-	0.0%	-	0.0%	-	0.0%	-	0.0%	-	-	-	-	-	0.0%
YTD:	-	0.0%	-	0.0%	-	0.0%	-	0.0%	-	0.0%	-	-	-	-	-	0.0%
Single Family	-	0.0%	-	0.0%	-	0.0%	-	0.0%	-	0.0%	-	-	-	-	-	0.0%
YTD:	-	0.0%	-	0.0%	-	0.0%	-	0.0%	-	0.0%	-	-	-	-	-	0.0%
Townhouse	-	0.0%	-	0.0%	-	0.0%	-	0.0%	-	0.0%	-	-	-	-	-	0.0%
YTD:	-	0.0%	-	0.0%	-	0.0%	-	0.0%	-	0.0%	-	-	-	-	-	0.0%
Condominium	-	0.0%	-	0.0%	-	0.0%	-	0.0%	-	0.0%	-	-	-	-	-	0.0%
YTD:	-	0.0%	-	0.0%	-	0.0%	-	0.0%	-	0.0%	-	-	-	-	-	0.0%

* Local Market Area Code: 135; Type: Census Place Group
 ** Closed Sale counts for most recent 3 months are Preliminary.

Market Analysis By Local Market Area*: Idalou

Property Type	Closed Sales**	YoY%	Dollar Volume	YoY%	Average Price	YoY%	Median Price	YoY%	Price/Sqft	YoY%	DOM	New Listings	Active Listings	Pending Sales	Months Inventory	Close To OLP
All(New and Existing)																
Residential (SF/COND/TH)	2	100.0%	\$189,000	100.0%	\$94,500	100.0%	\$94,500	100.0%	\$52	100.0%	73	1	6	1	4.2	76.4%
YTD:	4	100.0%	\$563,000	100.0%	\$140,750	100.0%	\$144,000	100.0%	\$83	100.0%	63	6	6	2		85.1%
Single Family	2	100.0%	\$189,000	100.0%	\$94,500	100.0%	\$94,500	100.0%	\$52	100.0%	73	1	6	1	4.2	76.4%
YTD:	4	100.0%	\$563,000	100.0%	\$140,750	100.0%	\$144,000	100.0%	\$83	100.0%	63	6	6	2		85.1%
Townhouse	-	0.0%	-	0.0%	-	0.0%	-	0.0%	-	0.0%	-	-	-	-	-	0.0%
YTD:	-	0.0%	-	0.0%	-	0.0%	-	0.0%	-	0.0%	-	-	-	-	-	0.0%
Condominium	-	0.0%	-	0.0%	-	0.0%	-	0.0%	-	0.0%	-	-	-	-	-	0.0%
YTD:	-	0.0%	-	0.0%	-	0.0%	-	0.0%	-	0.0%	-	-	-	-	-	0.0%
Existing Home																
Residential (SF/COND/TH)	2	100.0%	\$189,000	100.0%	\$94,500	100.0%	\$94,500	100.0%	\$52	100.0%	73	1	6	1	4.5	76.4%
YTD:	4	100.0%	\$563,000	100.0%	\$140,750	100.0%	\$144,000	100.0%	\$83	100.0%	63	6	6	2		85.1%
Single Family	2	100.0%	\$189,000	100.0%	\$94,500	100.0%	\$94,500	100.0%	\$52	100.0%	73	1	6	1	4.5	76.4%
YTD:	4	100.0%	\$563,000	100.0%	\$140,750	100.0%	\$144,000	100.0%	\$83	100.0%	63	6	6	2		85.1%
Townhouse	-	0.0%	-	0.0%	-	0.0%	-	0.0%	-	0.0%	-	-	-	-	-	0.0%
YTD:	-	0.0%	-	0.0%	-	0.0%	-	0.0%	-	0.0%	-	-	-	-	-	0.0%
Condominium	-	0.0%	-	0.0%	-	0.0%	-	0.0%	-	0.0%	-	-	-	-	-	0.0%
YTD:	-	0.0%	-	0.0%	-	0.0%	-	0.0%	-	0.0%	-	-	-	-	-	0.0%
New Construction																
Residential (SF/COND/TH)	-	0.0%	-	0.0%	-	0.0%	-	0.0%	-	0.0%	-	-	-	-	-	0.0%
YTD:	-	0.0%	-	0.0%	-	0.0%	-	0.0%	-	0.0%	-	-	-	-	-	0.0%
Single Family	-	0.0%	-	0.0%	-	0.0%	-	0.0%	-	0.0%	-	-	-	-	-	0.0%
YTD:	-	0.0%	-	0.0%	-	0.0%	-	0.0%	-	0.0%	-	-	-	-	-	0.0%
Townhouse	-	0.0%	-	0.0%	-	0.0%	-	0.0%	-	0.0%	-	-	-	-	-	0.0%
YTD:	-	0.0%	-	0.0%	-	0.0%	-	0.0%	-	0.0%	-	-	-	-	-	0.0%
Condominium	-	0.0%	-	0.0%	-	0.0%	-	0.0%	-	0.0%	-	-	-	-	-	0.0%
YTD:	-	0.0%	-	0.0%	-	0.0%	-	0.0%	-	0.0%	-	-	-	-	-	0.0%

* Local Market Area Code: 456; Type: Census Place Group
 ** Closed Sale counts for most recent 3 months are Preliminary.

Market Analysis By Local Market Area*: Levelland

Property Type	Closed Sales**	YoY%	Dollar Volume	YoY%	Average Price	YoY%	Median Price	YoY%	Price/Sqft	YoY%	DOM	New Listings	Active Listings	Pending Sales	Months Inventory	Close To OLP
All(New and Existing)																
Residential (SF/COND/TH)	7	-36.4%	\$1,075,800	-42.3%	\$153,686	-9.3%	\$175,000	-5.4%	\$99	17.2%	41	20	47	19	4.8	105.4%
YTD:	15	-6.3%	\$2,714,200	-2.9%	\$180,947	3.6%	\$195,000	4.1%	\$96	14.1%	75	36	46	25		97.0%
Single Family	7	-36.4%	\$1,075,800	-42.3%	\$153,686	-9.3%	\$175,000	-5.4%	\$99	17.2%	41	20	46	19	4.7	105.4%
YTD:	15	-6.3%	\$2,714,200	-2.9%	\$180,947	3.6%	\$195,000	4.1%	\$96	14.1%	75	36	45	25		97.0%
Townhouse	-	0.0%	-	0.0%	-	0.0%	-	0.0%	-	0.0%	-	-	-	-	-	0.0%
YTD:	-	0.0%	-	0.0%	-	0.0%	-	0.0%	-	0.0%	-	-	-	-	-	0.0%
Condominium	-	0.0%	-	0.0%	-	0.0%	-	0.0%	-	0.0%	-	-	1	-	-	0.0%
YTD:	-	0.0%	-	0.0%	-	0.0%	-	0.0%	-	0.0%	-	-	1	-	-	0.0%
Existing Home																
Residential (SF/COND/TH)	7	-36.4%	\$1,075,800	-42.3%	\$153,686	-9.3%	\$175,000	-5.4%	\$99	17.2%	41	20	46	19	4.7	105.4%
YTD:	15	-6.3%	\$2,714,200	-2.9%	\$180,947	3.6%	\$195,000	4.1%	\$96	14.1%	75	36	45	25		97.0%
Single Family	7	-36.4%	\$1,075,800	-42.3%	\$153,686	-9.3%	\$175,000	-5.4%	\$99	17.2%	41	20	45	19	4.6	105.4%
YTD:	15	-6.3%	\$2,714,200	-2.9%	\$180,947	3.6%	\$195,000	4.1%	\$96	14.1%	75	36	44	25		97.0%
Townhouse	-	0.0%	-	0.0%	-	0.0%	-	0.0%	-	0.0%	-	-	-	-	-	0.0%
YTD:	-	0.0%	-	0.0%	-	0.0%	-	0.0%	-	0.0%	-	-	-	-	-	0.0%
Condominium	-	0.0%	-	0.0%	-	0.0%	-	0.0%	-	0.0%	-	-	1	-	-	0.0%
YTD:	-	0.0%	-	0.0%	-	0.0%	-	0.0%	-	0.0%	-	-	1	-	-	0.0%
New Construction																
Residential (SF/COND/TH)	-	0.0%	-	0.0%	-	0.0%	-	0.0%	-	0.0%	-	-	1	-	-	0.0%
YTD:	-	0.0%	-	0.0%	-	0.0%	-	0.0%	-	0.0%	-	-	1	-	-	0.0%
Single Family	-	0.0%	-	0.0%	-	0.0%	-	0.0%	-	0.0%	-	-	1	-	-	0.0%
YTD:	-	0.0%	-	0.0%	-	0.0%	-	0.0%	-	0.0%	-	-	1	-	-	0.0%
Townhouse	-	0.0%	-	0.0%	-	0.0%	-	0.0%	-	0.0%	-	-	-	-	-	0.0%
YTD:	-	0.0%	-	0.0%	-	0.0%	-	0.0%	-	0.0%	-	-	-	-	-	0.0%
Condominium	-	0.0%	-	0.0%	-	0.0%	-	0.0%	-	0.0%	-	-	-	-	-	0.0%
YTD:	-	0.0%	-	0.0%	-	0.0%	-	0.0%	-	0.0%	-	-	-	-	-	0.0%

* Local Market Area Code: 220; Type: Census Place Group
 ** Closed Sale counts for most recent 3 months are Preliminary.

Market Analysis By Local Market Area*: Lubbock

Property Type	Closed Sales**	YoY%	Dollar Volume	YoY%	Average Price	YoY%	Median Price	YoY%	Price/Sqft	YoY%	DOM	New Listings	Active Listings	Pending Sales	Months Inventory	Close To OLP
All(New and Existing)																
Residential (SF/COND/TH)	220	3.3%	\$57,749,209	9.7%	\$262,496	6.2%	\$220,000	5.5%	\$131	1.4%	41	460	866	290	3.1	97.0%
YTD:	396	-4.4%	\$101,039,172	-6.3%	\$255,149	-2.1%	\$220,000	0.0%	\$127	-2.0%	47	967	861	553		95.6%
Single Family	213	3.4%	\$56,278,484	10.0%	\$264,218	6.4%	\$220,000	5.1%	\$130	1.0%	40	442	808	277	3.0	97.0%
YTD:	387	-3.0%	\$99,285,700	-5.1%	\$256,552	-2.2%	\$220,600	-0.6%	\$127	-2.1%	47	927	805	532		95.5%
Townhouse	4	-20.0%	\$914,000	-6.3%	\$228,500	17.1%	\$218,500	21.4%	\$136	17.9%	107	15	50	12	7.8	95.4%
YTD:	5	-58.3%	\$1,117,000	-54.5%	\$223,400	9.2%	\$205,000	2.0%	\$134	6.4%	93	31	49	16		95.8%
Condominium	3	50.0%	\$570,500	11.0%	\$190,167	-26.0%	\$214,000	-16.7%	\$159	-4.5%	11	3	8	1	4.8	98.1%
YTD:	4	33.3%	\$650,500	-11.4%	\$162,625	-33.5%	\$170,250	-22.6%	\$148	-12.2%	17	9	7	5		95.8%
Existing Home																
Residential (SF/COND/TH)	188	-2.1%	\$47,907,177	6.1%	\$254,825	8.4%	\$210,000	5.0%	\$126	3.1%	38	403	716	247	3.0	96.9%
YTD:	344	-5.8%	\$84,218,717	-6.3%	\$244,822	-0.6%	\$210,000	1.5%	\$122	-1.3%	44	819	706	455		95.2%
Single Family	184	-1.1%	\$47,055,036	7.3%	\$255,734	8.5%	\$210,000	5.0%	\$125	2.9%	38	389	679	240	2.9	96.9%
YTD:	338	-3.7%	\$83,086,174	-4.4%	\$245,817	-0.7%	\$210,000	2.4%	\$122	-1.2%	44	789	672	443		95.2%
Townhouse	1	-75.0%	\$288,000	-63.1%	\$288,000	47.7%	\$288,000	82.9%	\$95	-11.4%	90	11	30	6	10.0	96.3%
YTD:	2	-81.8%	\$491,000	-78.3%	\$245,500	19.5%	\$245,500	19.8%	\$110	-11.1%	64	21	27	7		96.7%
Condominium	3	50.0%	\$570,500	11.0%	\$190,167	-26.0%	\$214,000	-16.7%	\$159	-4.5%	11	3	7	1	4.2	98.1%
YTD:	4	33.3%	\$650,500	-11.4%	\$162,625	-33.5%	\$170,250	-22.6%	\$148	-12.2%	17	9	6	5		95.8%
New Construction																
Residential (SF/COND/TH)	32	52.4%	\$9,833,124	31.3%	\$307,285	-13.8%	\$273,220	-10.2%	\$160	-17.1%	60	57	150	43	3.8	97.6%
YTD:	52	6.1%	\$16,795,345	-6.5%	\$322,987	-11.9%	\$280,000	-15.1%	\$160	-8.0%	65	148	155	98		97.6%
Single Family	29	45.0%	\$9,217,690	26.4%	\$317,851	-12.9%	\$278,445	-10.6%	\$162	-17.5%	55	53	129	37	3.6	97.9%
YTD:	49	2.1%	\$16,176,490	-9.0%	\$330,132	-10.8%	\$283,450	-14.1%	\$161	-7.9%	62	138	132	89		97.7%
Townhouse	3	200.0%	\$626,000	220.2%	\$208,667	6.7%	\$205,000	4.9%	\$149	2.4%	112	4	20	6	5.9	95.1%
YTD:	3	200.0%	\$626,000	220.2%	\$208,667	6.7%	\$205,000	4.9%	\$149	2.4%	112	10	22	9		95.1%
Condominium	-	0.0%	-	0.0%	-	0.0%	-	0.0%	-	0.0%	-	-	1	-	-	0.0%
YTD:	-	0.0%	-	0.0%	-	0.0%	-	0.0%	-	0.0%	-	-	1	-		0.0%

* Local Market Area Code: 596; Type: Census Place Group
 ** Closed Sale counts for most recent 3 months are Preliminary.

Market Analysis By Local Market Area*: New Deal

Property Type	Closed Sales**	YoY%	Dollar Volume	YoY%	Average Price	YoY%	Median Price	YoY%	Price/Sqft	YoY%	DOM	New Listings	Active Listings	Pending Sales	Months Inventory	Close To OLP
All(New and Existing)																
Residential (SF/COND/TH)	-	-100.0%	-	-100.0%	-	-100.0%	-	-100.0%	-	-100.0%	-	-	3	1	9.0	0.0%
YTD:	-	-100.0%	-	-100.0%	-	-100.0%	-	-100.0%	-	-100.0%	-	3	3	1		0.0%
Single Family	-	-100.0%	-	-100.0%	-	-100.0%	-	-100.0%	-	-100.0%	-	-	3	1	9.0	0.0%
YTD:	-	-100.0%	-	-100.0%	-	-100.0%	-	-100.0%	-	-100.0%	-	3	3	1		0.0%
Townhouse	-	0.0%	-	0.0%	-	0.0%	-	0.0%	-	0.0%	-	-	-	-	-	0.0%
YTD:	-	0.0%	-	0.0%	-	0.0%	-	0.0%	-	0.0%	-	-	-	-	-	0.0%
Condominium	-	0.0%	-	0.0%	-	0.0%	-	0.0%	-	0.0%	-	-	-	-	-	0.0%
YTD:	-	0.0%	-	0.0%	-	0.0%	-	0.0%	-	0.0%	-	-	-	-	-	0.0%
Existing Home																
Residential (SF/COND/TH)	-	-100.0%	-	-100.0%	-	-100.0%	-	-100.0%	-	-100.0%	-	-	3	-	9.0	0.0%
YTD:	-	-100.0%	-	-100.0%	-	-100.0%	-	-100.0%	-	-100.0%	-	2	3	-		0.0%
Single Family	-	-100.0%	-	-100.0%	-	-100.0%	-	-100.0%	-	-100.0%	-	-	3	-	9.0	0.0%
YTD:	-	-100.0%	-	-100.0%	-	-100.0%	-	-100.0%	-	-100.0%	-	2	3	-		0.0%
Townhouse	-	0.0%	-	0.0%	-	0.0%	-	0.0%	-	0.0%	-	-	-	-	-	0.0%
YTD:	-	0.0%	-	0.0%	-	0.0%	-	0.0%	-	0.0%	-	-	-	-	-	0.0%
Condominium	-	0.0%	-	0.0%	-	0.0%	-	0.0%	-	0.0%	-	-	-	-	-	0.0%
YTD:	-	0.0%	-	0.0%	-	0.0%	-	0.0%	-	0.0%	-	-	-	-	-	0.0%
New Construction																
Residential (SF/COND/TH)	-	0.0%	-	0.0%	-	0.0%	-	0.0%	-	0.0%	-	-	-	1	-	0.0%
YTD:	-	0.0%	-	0.0%	-	0.0%	-	0.0%	-	0.0%	-	1	1	1		0.0%
Single Family	-	0.0%	-	0.0%	-	0.0%	-	0.0%	-	0.0%	-	-	-	1	-	0.0%
YTD:	-	0.0%	-	0.0%	-	0.0%	-	0.0%	-	0.0%	-	1	1	1		0.0%
Townhouse	-	0.0%	-	0.0%	-	0.0%	-	0.0%	-	0.0%	-	-	-	-	-	0.0%
YTD:	-	0.0%	-	0.0%	-	0.0%	-	0.0%	-	0.0%	-	-	-	-	-	0.0%
Condominium	-	0.0%	-	0.0%	-	0.0%	-	0.0%	-	0.0%	-	-	-	-	-	0.0%
YTD:	-	0.0%	-	0.0%	-	0.0%	-	0.0%	-	0.0%	-	-	-	-	-	0.0%

* Local Market Area Code: 700; Type: Census Place Group
 ** Closed Sale counts for most recent 3 months are Preliminary.

Market Analysis By Local Market Area*: Ransom Canyon

Property Type	Closed Sales**	YoY%	Dollar Volume	YoY%	Average Price	YoY%	Median Price	YoY%	Price/Sqft	YoY%	DOM	New Listings	Active Listings	Pending Sales	Months Inventory	Close To OLP
All(New and Existing)																
Residential (SF/COND/TH)	2	100.0%	\$884,500	152.7%	\$442,250	26.4%	\$442,250	26.4%	\$150	1.0%	87	7	8	5	4.0	94.6%
YTD:	3	200.0%	\$996,500	184.7%	\$332,167	-5.1%	\$385,000	10.0%	\$125	-15.9%	127	11	8	8		98.7%
Single Family	2	100.0%	\$884,500	152.7%	\$442,250	26.4%	\$442,250	26.4%	\$150	1.0%	87	7	8	5	4.0	94.6%
YTD:	3	200.0%	\$996,500	184.7%	\$332,167	-5.1%	\$385,000	10.0%	\$125	-15.9%	127	11	8	8		98.7%
Townhouse	-	0.0%	-	0.0%	-	0.0%	-	0.0%	-	0.0%	-	-	-	-	-	0.0%
YTD:	-	0.0%	-	0.0%	-	0.0%	-	0.0%	-	0.0%	-	-	-	-	-	0.0%
Condominium	-	0.0%	-	0.0%	-	0.0%	-	0.0%	-	0.0%	-	-	-	-	-	0.0%
YTD:	-	0.0%	-	0.0%	-	0.0%	-	0.0%	-	0.0%	-	-	-	-	-	0.0%
Existing Home																
Residential (SF/COND/TH)	2	100.0%	\$884,500	152.7%	\$442,250	26.4%	\$442,250	26.4%	\$150	1.0%	87	7	7	5	3.7	94.6%
YTD:	3	200.0%	\$996,500	184.7%	\$332,167	-5.1%	\$385,000	10.0%	\$125	-15.9%	127	10	7	8		98.7%
Single Family	2	100.0%	\$884,500	152.7%	\$442,250	26.4%	\$442,250	26.4%	\$150	1.0%	87	7	7	5	3.7	94.6%
YTD:	3	200.0%	\$996,500	184.7%	\$332,167	-5.1%	\$385,000	10.0%	\$125	-15.9%	127	10	7	8		98.7%
Townhouse	-	0.0%	-	0.0%	-	0.0%	-	0.0%	-	0.0%	-	-	-	-	-	0.0%
YTD:	-	0.0%	-	0.0%	-	0.0%	-	0.0%	-	0.0%	-	-	-	-	-	0.0%
Condominium	-	0.0%	-	0.0%	-	0.0%	-	0.0%	-	0.0%	-	-	-	-	-	0.0%
YTD:	-	0.0%	-	0.0%	-	0.0%	-	0.0%	-	0.0%	-	-	-	-	-	0.0%
New Construction																
Residential (SF/COND/TH)	-	0.0%	-	0.0%	-	0.0%	-	0.0%	-	0.0%	-	-	1	-	12.0	0.0%
YTD:	-	0.0%	-	0.0%	-	0.0%	-	0.0%	-	0.0%	-	1	1	-		0.0%
Single Family	-	0.0%	-	0.0%	-	0.0%	-	0.0%	-	0.0%	-	-	1	-	12.0	0.0%
YTD:	-	0.0%	-	0.0%	-	0.0%	-	0.0%	-	0.0%	-	1	1	-		0.0%
Townhouse	-	0.0%	-	0.0%	-	0.0%	-	0.0%	-	0.0%	-	-	-	-	-	0.0%
YTD:	-	0.0%	-	0.0%	-	0.0%	-	0.0%	-	0.0%	-	-	-	-	-	0.0%
Condominium	-	0.0%	-	0.0%	-	0.0%	-	0.0%	-	0.0%	-	-	-	-	-	0.0%
YTD:	-	0.0%	-	0.0%	-	0.0%	-	0.0%	-	0.0%	-	-	-	-	-	0.0%

* Local Market Area Code: 826; Type: Census Place Group
 ** Closed Sale counts for most recent 3 months are Preliminary.

Market Analysis By Local Market Area*: Ropesville

Property Type	Closed Sales**	YoY%	Dollar Volume	YoY%	Average Price	YoY%	Median Price	YoY%	Price/Sqft	YoY%	DOM	New Listings	Active Listings	Pending Sales	Months Inventory	Close To OLP
All(New and Existing)																
Residential (SF/COND/TH)	-	0.0%	-	0.0%	-	0.0%	-	0.0%	-	0.0%	-	-	-	-	-	0.0%
YTD:	-	0.0%	-	0.0%	-	0.0%	-	0.0%	-	0.0%	-	-	-	-	-	0.0%
Single Family	-	0.0%	-	0.0%	-	0.0%	-	0.0%	-	0.0%	-	-	-	-	-	0.0%
YTD:	-	0.0%	-	0.0%	-	0.0%	-	0.0%	-	0.0%	-	-	-	-	-	0.0%
Townhouse	-	0.0%	-	0.0%	-	0.0%	-	0.0%	-	0.0%	-	-	-	-	-	0.0%
YTD:	-	0.0%	-	0.0%	-	0.0%	-	0.0%	-	0.0%	-	-	-	-	-	0.0%
Condominium	-	0.0%	-	0.0%	-	0.0%	-	0.0%	-	0.0%	-	-	-	-	-	0.0%
YTD:	-	0.0%	-	0.0%	-	0.0%	-	0.0%	-	0.0%	-	-	-	-	-	0.0%
Existing Home																
Residential (SF/COND/TH)	-	0.0%	-	0.0%	-	0.0%	-	0.0%	-	0.0%	-	-	-	-	-	0.0%
YTD:	-	0.0%	-	0.0%	-	0.0%	-	0.0%	-	0.0%	-	-	-	-	-	0.0%
Single Family	-	0.0%	-	0.0%	-	0.0%	-	0.0%	-	0.0%	-	-	-	-	-	0.0%
YTD:	-	0.0%	-	0.0%	-	0.0%	-	0.0%	-	0.0%	-	-	-	-	-	0.0%
Townhouse	-	0.0%	-	0.0%	-	0.0%	-	0.0%	-	0.0%	-	-	-	-	-	0.0%
YTD:	-	0.0%	-	0.0%	-	0.0%	-	0.0%	-	0.0%	-	-	-	-	-	0.0%
Condominium	-	0.0%	-	0.0%	-	0.0%	-	0.0%	-	0.0%	-	-	-	-	-	0.0%
YTD:	-	0.0%	-	0.0%	-	0.0%	-	0.0%	-	0.0%	-	-	-	-	-	0.0%
New Construction																
Residential (SF/COND/TH)	-	0.0%	-	0.0%	-	0.0%	-	0.0%	-	0.0%	-	-	-	-	-	0.0%
YTD:	-	0.0%	-	0.0%	-	0.0%	-	0.0%	-	0.0%	-	-	-	-	-	0.0%
Single Family	-	0.0%	-	0.0%	-	0.0%	-	0.0%	-	0.0%	-	-	-	-	-	0.0%
YTD:	-	0.0%	-	0.0%	-	0.0%	-	0.0%	-	0.0%	-	-	-	-	-	0.0%
Townhouse	-	0.0%	-	0.0%	-	0.0%	-	0.0%	-	0.0%	-	-	-	-	-	0.0%
YTD:	-	0.0%	-	0.0%	-	0.0%	-	0.0%	-	0.0%	-	-	-	-	-	0.0%
Condominium	-	0.0%	-	0.0%	-	0.0%	-	0.0%	-	0.0%	-	-	-	-	-	0.0%
YTD:	-	0.0%	-	0.0%	-	0.0%	-	0.0%	-	0.0%	-	-	-	-	-	0.0%

* Local Market Area Code: 222; Type: Census Place Group
 ** Closed Sale counts for most recent 3 months are Preliminary.

Market Analysis By Local Market Area*: Shallowater

Property Type	Closed Sales**	YoY%	Dollar Volume	YoY%	Average Price	YoY%	Median Price	YoY%	Price/Sqft	YoY%	DOM	New Listings	Active Listings	Pending Sales	Months Inventory	Close To OLP
All(New and Existing)																
Residential (SF/COND/TH)	1	100.0%	\$165,000	100.0%	\$165,000	100.0%	\$165,000	100.0%	\$124	100.0%	70	12	17	4	7.6	103.1%
YTD:	1	-50.0%	\$165,000	-67.4%	\$165,000	-34.7%	\$165,000	-34.7%	\$124	-2.7%	70	16	15	9		103.1%
Single Family	1	100.0%	\$165,000	100.0%	\$165,000	100.0%	\$165,000	100.0%	\$124	100.0%	70	12	17	4	7.6	103.1%
YTD:	1	-50.0%	\$165,000	-67.4%	\$165,000	-34.7%	\$165,000	-34.7%	\$124	-2.7%	70	16	15	9		103.1%
Townhouse	-	0.0%	-	0.0%	-	0.0%	-	0.0%	-	0.0%	-	-	-	-	-	0.0%
YTD:	-	0.0%	-	0.0%	-	0.0%	-	0.0%	-	0.0%	-	-	-	-	-	0.0%
Condominium	-	0.0%	-	0.0%	-	0.0%	-	0.0%	-	0.0%	-	-	-	-	-	0.0%
YTD:	-	0.0%	-	0.0%	-	0.0%	-	0.0%	-	0.0%	-	-	-	-	-	0.0%
Existing Home																
Residential (SF/COND/TH)	1	100.0%	\$165,000	100.0%	\$165,000	100.0%	\$165,000	100.0%	\$124	100.0%	70	7	10	4	5.7	103.1%
YTD:	1	-50.0%	\$165,000	-67.4%	\$165,000	-34.7%	\$165,000	-34.7%	\$124	-2.7%	70	11	9	9		103.1%
Single Family	1	100.0%	\$165,000	100.0%	\$165,000	100.0%	\$165,000	100.0%	\$124	100.0%	70	7	10	4	5.7	103.1%
YTD:	1	-50.0%	\$165,000	-67.4%	\$165,000	-34.7%	\$165,000	-34.7%	\$124	-2.7%	70	11	9	9		103.1%
Townhouse	-	0.0%	-	0.0%	-	0.0%	-	0.0%	-	0.0%	-	-	-	-	-	0.0%
YTD:	-	0.0%	-	0.0%	-	0.0%	-	0.0%	-	0.0%	-	-	-	-	-	0.0%
Condominium	-	0.0%	-	0.0%	-	0.0%	-	0.0%	-	0.0%	-	-	-	-	-	0.0%
YTD:	-	0.0%	-	0.0%	-	0.0%	-	0.0%	-	0.0%	-	-	-	-	-	0.0%
New Construction																
Residential (SF/COND/TH)	-	0.0%	-	0.0%	-	0.0%	-	0.0%	-	0.0%	-	5	7	-	14.0	0.0%
YTD:	-	0.0%	-	0.0%	-	0.0%	-	0.0%	-	0.0%	-	5	6	-		0.0%
Single Family	-	0.0%	-	0.0%	-	0.0%	-	0.0%	-	0.0%	-	5	7	-	14.0	0.0%
YTD:	-	0.0%	-	0.0%	-	0.0%	-	0.0%	-	0.0%	-	5	6	-		0.0%
Townhouse	-	0.0%	-	0.0%	-	0.0%	-	0.0%	-	0.0%	-	-	-	-	-	0.0%
YTD:	-	0.0%	-	0.0%	-	0.0%	-	0.0%	-	0.0%	-	-	-	-	-	0.0%
Condominium	-	0.0%	-	0.0%	-	0.0%	-	0.0%	-	0.0%	-	-	-	-	-	0.0%
YTD:	-	0.0%	-	0.0%	-	0.0%	-	0.0%	-	0.0%	-	-	-	-	-	0.0%

* Local Market Area Code: 925; Type: Census Place Group
 ** Closed Sale counts for most recent 3 months are Preliminary.

Market Analysis By Local Market Area*: Slaton

Property Type	Closed Sales**	YoY%	Dollar Volume	YoY%	Average Price	YoY%	Median Price	YoY%	Price/Sqft	YoY%	DOM	New Listings	Active Listings	Pending Sales	Months Inventory	Close To OLP
All(New and Existing)																
Residential (SF/COND/TH)	6	100.0%	\$1,344,900	208.8%	\$224,150	54.4%	\$242,000	135.0%	\$111	36.4%	157	10	21	2	4.5	86.2%
YTD:	12	71.4%	\$1,910,900	112.1%	\$159,242	23.7%	\$130,250	26.5%	\$89	25.5%	96	16	17	7		87.0%
Single Family	6	100.0%	\$1,344,900	208.8%	\$224,150	54.4%	\$242,000	135.0%	\$111	36.4%	157	9	20	2	4.3	86.2%
YTD:	12	71.4%	\$1,910,900	112.1%	\$159,242	23.7%	\$130,250	26.5%	\$89	25.5%	96	15	17	7		87.0%
Townhouse	-	0.0%	-	0.0%	-	0.0%	-	0.0%	-	0.0%	-	-	-	-	-	0.0%
YTD:	-	0.0%	-	0.0%	-	0.0%	-	0.0%	-	0.0%	-	-	-	-	-	0.0%
Condominium	-	0.0%	-	0.0%	-	0.0%	-	0.0%	-	0.0%	-	1	1	-	-	0.0%
YTD:	-	0.0%	-	0.0%	-	0.0%	-	0.0%	-	0.0%	-	1	1	-	-	0.0%
Existing Home																
Residential (SF/COND/TH)	6	100.0%	\$1,344,900	208.8%	\$224,150	54.4%	\$242,000	135.0%	\$111	36.4%	157	10	21	2	4.5	86.2%
YTD:	12	71.4%	\$1,910,900	112.1%	\$159,242	23.7%	\$130,250	26.5%	\$89	25.5%	96	16	17	7		87.0%
Single Family	6	100.0%	\$1,344,900	208.8%	\$224,150	54.4%	\$242,000	135.0%	\$111	36.4%	157	9	20	2	4.3	86.2%
YTD:	12	71.4%	\$1,910,900	112.1%	\$159,242	23.7%	\$130,250	26.5%	\$89	25.5%	96	15	17	7		87.0%
Townhouse	-	0.0%	-	0.0%	-	0.0%	-	0.0%	-	0.0%	-	-	-	-	-	0.0%
YTD:	-	0.0%	-	0.0%	-	0.0%	-	0.0%	-	0.0%	-	-	-	-	-	0.0%
Condominium	-	0.0%	-	0.0%	-	0.0%	-	0.0%	-	0.0%	-	1	1	-	-	0.0%
YTD:	-	0.0%	-	0.0%	-	0.0%	-	0.0%	-	0.0%	-	1	1	-	-	0.0%
New Construction																
Residential (SF/COND/TH)	-	0.0%	-	0.0%	-	0.0%	-	0.0%	-	0.0%	-	-	-	-	-	0.0%
YTD:	-	0.0%	-	0.0%	-	0.0%	-	0.0%	-	0.0%	-	-	-	-	-	0.0%
Single Family	-	0.0%	-	0.0%	-	0.0%	-	0.0%	-	0.0%	-	-	-	-	-	0.0%
YTD:	-	0.0%	-	0.0%	-	0.0%	-	0.0%	-	0.0%	-	-	-	-	-	0.0%
Townhouse	-	0.0%	-	0.0%	-	0.0%	-	0.0%	-	0.0%	-	-	-	-	-	0.0%
YTD:	-	0.0%	-	0.0%	-	0.0%	-	0.0%	-	0.0%	-	-	-	-	-	0.0%
Condominium	-	0.0%	-	0.0%	-	0.0%	-	0.0%	-	0.0%	-	-	-	-	-	0.0%
YTD:	-	0.0%	-	0.0%	-	0.0%	-	0.0%	-	0.0%	-	-	-	-	-	0.0%

* Local Market Area Code: 935; Type: Census Place Group
 ** Closed Sale counts for most recent 3 months are Preliminary.

Market Analysis By Local Market Area*: Smyer

Property Type	Closed Sales**	YoY%	Dollar Volume	YoY%	Average Price	YoY%	Median Price	YoY%	Price/Sqft	YoY%	DOM	New Listings	Active Listings	Pending Sales	Months Inventory	Close To OLP
All(New and Existing)																
Residential (SF/COND/TH)	-	0.0%	-	0.0%	-	0.0%	-	0.0%	-	0.0%	-	-	-	1	-	0.0%
YTD:	-	0.0%	-	0.0%	-	0.0%	-	0.0%	-	0.0%	-	-	1	1	-	0.0%
Single Family	-	0.0%	-	0.0%	-	0.0%	-	0.0%	-	0.0%	-	-	-	1	-	0.0%
YTD:	-	0.0%	-	0.0%	-	0.0%	-	0.0%	-	0.0%	-	-	1	1	-	0.0%
Townhouse	-	0.0%	-	0.0%	-	0.0%	-	0.0%	-	0.0%	-	-	-	-	-	0.0%
YTD:	-	0.0%	-	0.0%	-	0.0%	-	0.0%	-	0.0%	-	-	-	-	-	0.0%
Condominium	-	0.0%	-	0.0%	-	0.0%	-	0.0%	-	0.0%	-	-	-	-	-	0.0%
YTD:	-	0.0%	-	0.0%	-	0.0%	-	0.0%	-	0.0%	-	-	-	-	-	0.0%
Existing Home																
Residential (SF/COND/TH)	-	0.0%	-	0.0%	-	0.0%	-	0.0%	-	0.0%	-	-	-	1	-	0.0%
YTD:	-	0.0%	-	0.0%	-	0.0%	-	0.0%	-	0.0%	-	-	1	1	-	0.0%
Single Family	-	0.0%	-	0.0%	-	0.0%	-	0.0%	-	0.0%	-	-	-	1	-	0.0%
YTD:	-	0.0%	-	0.0%	-	0.0%	-	0.0%	-	0.0%	-	-	1	1	-	0.0%
Townhouse	-	0.0%	-	0.0%	-	0.0%	-	0.0%	-	0.0%	-	-	-	-	-	0.0%
YTD:	-	0.0%	-	0.0%	-	0.0%	-	0.0%	-	0.0%	-	-	-	-	-	0.0%
Condominium	-	0.0%	-	0.0%	-	0.0%	-	0.0%	-	0.0%	-	-	-	-	-	0.0%
YTD:	-	0.0%	-	0.0%	-	0.0%	-	0.0%	-	0.0%	-	-	-	-	-	0.0%
New Construction																
Residential (SF/COND/TH)	-	0.0%	-	0.0%	-	0.0%	-	0.0%	-	0.0%	-	-	-	-	-	0.0%
YTD:	-	0.0%	-	0.0%	-	0.0%	-	0.0%	-	0.0%	-	-	-	-	-	0.0%
Single Family	-	0.0%	-	0.0%	-	0.0%	-	0.0%	-	0.0%	-	-	-	-	-	0.0%
YTD:	-	0.0%	-	0.0%	-	0.0%	-	0.0%	-	0.0%	-	-	-	-	-	0.0%
Townhouse	-	0.0%	-	0.0%	-	0.0%	-	0.0%	-	0.0%	-	-	-	-	-	0.0%
YTD:	-	0.0%	-	0.0%	-	0.0%	-	0.0%	-	0.0%	-	-	-	-	-	0.0%
Condominium	-	0.0%	-	0.0%	-	0.0%	-	0.0%	-	0.0%	-	-	-	-	-	0.0%
YTD:	-	0.0%	-	0.0%	-	0.0%	-	0.0%	-	0.0%	-	-	-	-	-	0.0%

* Local Market Area Code: 491; Type: Census Place Group
 ** Closed Sale counts for most recent 3 months are Preliminary.

Market Analysis By Local Market Area*: Sundown

Property Type	Closed Sales**	YoY%	Dollar Volume	YoY%	Average Price	YoY%	Median Price	YoY%	Price/Sqft	YoY%	DOM	New Listings	Active Listings	Pending Sales	Months Inventory	Close To OLP
All(New and Existing)																
Residential (SF/COND/TH)	1	100.0%	\$110,000	100.0%	\$110,000	100.0%	\$110,000	100.0%	\$92	100.0%	7	-	3	1	7.2	88.0%
YTD:	1	100.0%	\$110,000	100.0%	\$110,000	100.0%	\$110,000	100.0%	\$92	100.0%	7	1	3	2		88.0%
Single Family	1	100.0%	\$110,000	100.0%	\$110,000	100.0%	\$110,000	100.0%	\$92	100.0%	7	-	3	1	7.2	88.0%
YTD:	1	100.0%	\$110,000	100.0%	\$110,000	100.0%	\$110,000	100.0%	\$92	100.0%	7	1	3	2		88.0%
Townhouse	-	0.0%	-	0.0%	-	0.0%	-	0.0%	-	0.0%	-	-	-	-	-	0.0%
YTD:	-	0.0%	-	0.0%	-	0.0%	-	0.0%	-	0.0%	-	-	-	-	-	0.0%
Condominium	-	0.0%	-	0.0%	-	0.0%	-	0.0%	-	0.0%	-	-	-	-	-	0.0%
YTD:	-	0.0%	-	0.0%	-	0.0%	-	0.0%	-	0.0%	-	-	-	-	-	0.0%
Existing Home																
Residential (SF/COND/TH)	1	100.0%	\$110,000	100.0%	\$110,000	100.0%	\$110,000	100.0%	\$92	100.0%	7	-	3	1	7.2	88.0%
YTD:	1	100.0%	\$110,000	100.0%	\$110,000	100.0%	\$110,000	100.0%	\$92	100.0%	7	1	3	2		88.0%
Single Family	1	100.0%	\$110,000	100.0%	\$110,000	100.0%	\$110,000	100.0%	\$92	100.0%	7	-	3	1	7.2	88.0%
YTD:	1	100.0%	\$110,000	100.0%	\$110,000	100.0%	\$110,000	100.0%	\$92	100.0%	7	1	3	2		88.0%
Townhouse	-	0.0%	-	0.0%	-	0.0%	-	0.0%	-	0.0%	-	-	-	-	-	0.0%
YTD:	-	0.0%	-	0.0%	-	0.0%	-	0.0%	-	0.0%	-	-	-	-	-	0.0%
Condominium	-	0.0%	-	0.0%	-	0.0%	-	0.0%	-	0.0%	-	-	-	-	-	0.0%
YTD:	-	0.0%	-	0.0%	-	0.0%	-	0.0%	-	0.0%	-	-	-	-	-	0.0%
New Construction																
Residential (SF/COND/TH)	-	0.0%	-	0.0%	-	0.0%	-	0.0%	-	0.0%	-	-	-	-	-	0.0%
YTD:	-	0.0%	-	0.0%	-	0.0%	-	0.0%	-	0.0%	-	-	-	-	-	0.0%
Single Family	-	0.0%	-	0.0%	-	0.0%	-	0.0%	-	0.0%	-	-	-	-	-	0.0%
YTD:	-	0.0%	-	0.0%	-	0.0%	-	0.0%	-	0.0%	-	-	-	-	-	0.0%
Townhouse	-	0.0%	-	0.0%	-	0.0%	-	0.0%	-	0.0%	-	-	-	-	-	0.0%
YTD:	-	0.0%	-	0.0%	-	0.0%	-	0.0%	-	0.0%	-	-	-	-	-	0.0%
Condominium	-	0.0%	-	0.0%	-	0.0%	-	0.0%	-	0.0%	-	-	-	-	-	0.0%
YTD:	-	0.0%	-	0.0%	-	0.0%	-	0.0%	-	0.0%	-	-	-	-	-	0.0%

* Local Market Area Code: 223; Type: Census Place Group
 ** Closed Sale counts for most recent 3 months are Preliminary.

Market Analysis By Local Market Area*: Wolfforth

Property Type	Closed Sales**	YoY%	Dollar Volume	YoY%	Average Price	YoY%	Median Price	YoY%	Price/Sqft	YoY%	DOM	New Listings	Active Listings	Pending Sales	Months Inventory	Close To OLP
All(New and Existing)																
Residential (SF/COND/TH)	14	-33.3%	\$4,696,179	-16.0%	\$335,441	26.1%	\$339,900	34.4%	\$152	9.1%	48	25	39	24	2.2	96.8%
YTD:	23	-30.3%	\$7,304,986	-19.2%	\$317,608	16.0%	\$333,360	31.8%	\$151	5.9%	43	54	44	38		96.8%
Single Family	14	-33.3%	\$4,696,179	-16.0%	\$335,441	26.1%	\$339,900	34.4%	\$152	9.1%	48	25	39	24	2.2	96.8%
YTD:	23	-30.3%	\$7,304,986	-19.2%	\$317,608	16.0%	\$333,360	31.8%	\$151	5.9%	43	54	44	38		96.8%
Townhouse	-	0.0%	-	0.0%	-	0.0%	-	0.0%	-	0.0%	-	-	-	-	-	0.0%
YTD:	-	0.0%	-	0.0%	-	0.0%	-	0.0%	-	0.0%	-	-	-	-	-	0.0%
Condominium	-	0.0%	-	0.0%	-	0.0%	-	0.0%	-	0.0%	-	-	-	-	-	0.0%
YTD:	-	0.0%	-	0.0%	-	0.0%	-	0.0%	-	0.0%	-	-	-	-	-	0.0%
Existing Home																
Residential (SF/COND/TH)	9	-10.0%	\$3,103,538	17.7%	\$344,838	30.8%	\$373,350	32.2%	\$152	15.2%	38	21	26	12	2.6	96.6%
YTD:	15	15.4%	\$5,003,786	55.8%	\$333,586	35.0%	\$373,350	47.6%	\$153	15.7%	36	39	26	22		96.5%
Single Family	9	-10.0%	\$3,103,538	17.7%	\$344,838	30.8%	\$373,350	32.2%	\$152	15.2%	38	21	26	12	2.7	96.6%
YTD:	15	15.4%	\$5,003,786	55.8%	\$333,586	35.0%	\$373,350	47.6%	\$153	15.7%	36	39	26	22		96.5%
Townhouse	-	0.0%	-	0.0%	-	0.0%	-	0.0%	-	0.0%	-	-	-	-	-	0.0%
YTD:	-	0.0%	-	0.0%	-	0.0%	-	0.0%	-	0.0%	-	-	-	-	-	0.0%
Condominium	-	0.0%	-	0.0%	-	0.0%	-	0.0%	-	0.0%	-	-	-	-	-	0.0%
YTD:	-	0.0%	-	0.0%	-	0.0%	-	0.0%	-	0.0%	-	-	-	-	-	0.0%
New Construction																
Residential (SF/COND/TH)	5	-54.6%	\$1,602,038	-45.7%	\$320,408	19.5%	\$335,000	44.9%	\$151	4.1%	65	4	13	12	1.7	97.2%
YTD:	8	-60.0%	\$2,317,178	-60.2%	\$289,647	-0.6%	\$309,190	21.9%	\$149	-0.8%	55	15	18	16		97.3%
Single Family	5	-54.6%	\$1,602,038	-45.7%	\$320,408	19.5%	\$335,000	44.9%	\$151	4.1%	65	4	13	12	1.7	97.2%
YTD:	8	-60.0%	\$2,317,178	-60.2%	\$289,647	-0.6%	\$309,190	21.9%	\$149	-0.8%	55	15	18	16		97.3%
Townhouse	-	0.0%	-	0.0%	-	0.0%	-	0.0%	-	0.0%	-	-	-	-	-	0.0%
YTD:	-	0.0%	-	0.0%	-	0.0%	-	0.0%	-	0.0%	-	-	-	-	-	0.0%
Condominium	-	0.0%	-	0.0%	-	0.0%	-	0.0%	-	0.0%	-	-	-	-	-	0.0%
YTD:	-	0.0%	-	0.0%	-	0.0%	-	0.0%	-	0.0%	-	-	-	-	-	0.0%

* Local Market Area Code: 1096; Type: Census Place Group
 ** Closed Sale counts for most recent 3 months are Preliminary.

