

Market Analysis By State: Texas

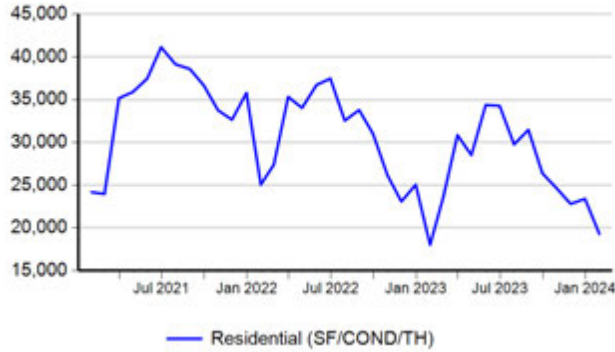
Property Type	Closed Sales*	YoY%	Dollar Volume	YoY%	Average Price	YoY%	Median Price	YoY%	Price/Sqft	YoY%	DOM	New Listings	Active Listings	Pending Sales	Months Inventory	Close To OLP
All(New and Existing)																
Residential (SF/COND/TH)	19,271	7.0%	\$7,631,668,586	10.1%	\$396,018	2.9%	\$325,000	1.9%	\$184	2.4%	64	39,719	94,922	25,749	3.5	93.7%
YTD:	19,271	7.0%	\$7,631,668,586	10.1%	\$396,018	2.9%	\$325,000	1.9%	\$184	2.4%	64	39,719	94,922	25,749		93.7%
Single Family	18,178	7.9%	\$7,263,460,520	10.5%	\$399,574	2.5%	\$328,000	2.5%	\$182	2.4%	65	36,635	87,885	24,292	3.4	93.7%
YTD:	18,178	7.9%	\$7,263,460,520	10.5%	\$399,574	2.5%	\$328,000	2.5%	\$182	2.4%	65	36,635	87,885	24,292		93.7%
Townhouse	508	1.2%	\$179,537,192	7.8%	\$353,420	6.6%	\$315,125	2.3%	\$191	2.8%	62	1,284	2,558	702	3.6	94.7%
YTD:	508	1.2%	\$179,537,192	7.8%	\$353,420	6.6%	\$315,125	2.3%	\$191	2.8%	62	1,284	2,558	702		94.7%
Condominium	570	-13.0%	\$184,031,462	-5.5%	\$322,862	8.6%	\$234,000	6.4%	\$254	7.1%	64	1,800	4,479	755	4.8	92.9%
YTD:	570	-13.0%	\$184,031,462	-5.5%	\$322,862	8.6%	\$234,000	6.4%	\$254	7.1%	64	1,800	4,479	755		92.9%
Existing Home																
Residential (SF/COND/TH)	14,250	5.3%	\$5,548,081,554	10.9%	\$389,339	5.4%	\$310,000	3.3%	\$183	4.2%	59	28,704	65,239	17,506	3.2	93.6%
YTD:	14,250	5.3%	\$5,548,081,554	10.9%	\$389,339	5.4%	\$310,000	3.3%	\$183	4.2%	59	28,704	65,239	17,506		93.6%
Single Family	13,307	6.1%	\$5,243,131,871	11.5%	\$394,013	5.1%	\$315,000	3.8%	\$180	4.2%	59	26,215	59,714	16,286	3.1	93.6%
YTD:	13,307	6.1%	\$5,243,131,871	11.5%	\$394,013	5.1%	\$315,000	3.8%	\$180	4.2%	59	26,215	59,714	16,286		93.6%
Townhouse	385	1.6%	\$130,216,620	8.3%	\$338,225	6.6%	\$291,250	2.2%	\$184	4.0%	55	896	1,665	509	3.1	94.7%
YTD:	385	1.6%	\$130,216,620	8.3%	\$338,225	6.6%	\$291,250	2.2%	\$184	4.0%	55	896	1,665	509		94.7%
Condominium	541	-12.9%	\$169,325,817	-5.0%	\$312,987	9.0%	\$230,000	8.4%	\$252	8.7%	64	1,593	3,860	711	4.4	93.0%
YTD:	541	-12.9%	\$169,325,817	-5.0%	\$312,987	9.0%	\$230,000	8.4%	\$252	8.7%	64	1,593	3,860	711		93.0%
New Construction																
Residential (SF/COND/TH)	5,020	12.3%	\$2,083,769,797	7.8%	\$415,094	-4.0%	\$356,830	-0.9%	\$187	-2.7%	79	11,015	29,683	8,243	4.3	94.1%
YTD:	5,020	12.3%	\$2,083,769,797	7.8%	\$415,094	-4.0%	\$356,830	-0.9%	\$187	-2.7%	79	11,015	29,683	8,243		94.1%
Single Family	4,866	12.9%	\$2,018,777,483	8.0%	\$414,874	-4.3%	\$355,990	-1.0%	\$185	-2.5%	79	10,420	28,171	8,006	4.2	94.1%
YTD:	4,866	12.9%	\$2,018,777,483	8.0%	\$414,874	-4.3%	\$355,990	-1.0%	\$185	-2.5%	79	10,420	28,171	8,006		94.1%
Townhouse	121	-1.6%	\$48,622,232	5.1%	\$401,837	6.8%	\$361,905	0.8%	\$213	0.2%	85	388	893	193	5.0	94.6%
YTD:	121	-1.6%	\$48,622,232	5.1%	\$401,837	6.8%	\$361,905	0.8%	\$213	0.2%	85	388	893	193		94.6%
Condominium	29	-14.7%	\$14,702,119	-10.1%	\$506,970	5.4%	\$486,920	20.2%	\$296	-12.0%	69	207	619	44	10.2	91.5%
YTD:	29	-14.7%	\$14,702,119	-10.1%	\$506,970	5.4%	\$486,920	20.2%	\$296	-12.0%	69	207	619	44		91.5%

* Closed Sale counts for most recent 3 months are Preliminary.

Trend Analysis By State: Texas

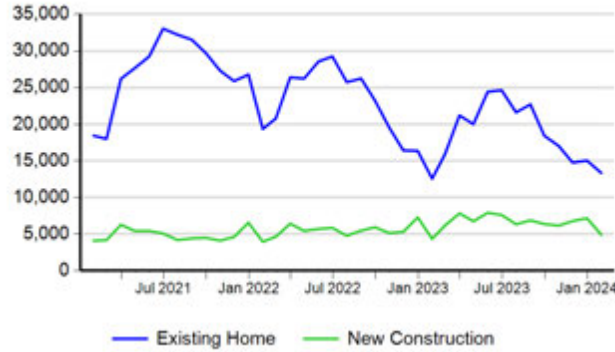
Residential, All (New and Existing)

Monthly Units Sold



Single Family, New vs. Existing

Monthly Units Sold



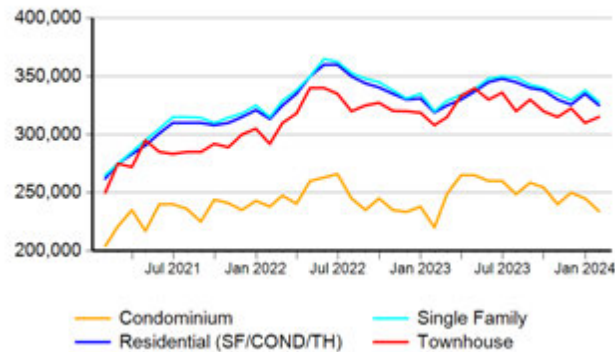
COND/TH, All (New and Existing)

Monthly Units Sold



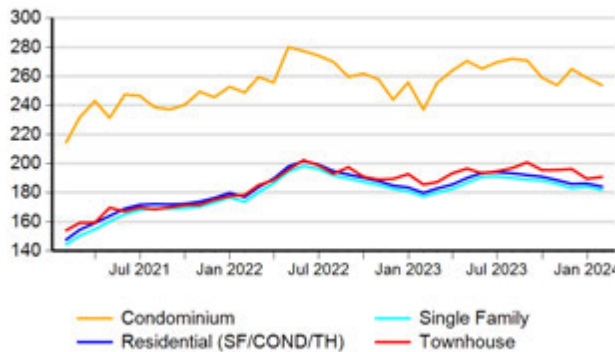
All (New and Existing) Construction

Median Sale Price



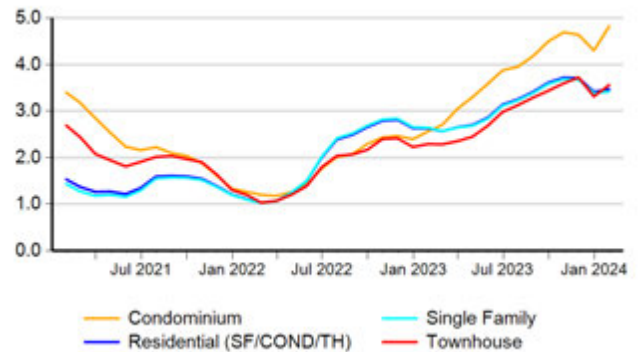
All (New and Existing) Construction

Average Close Price PSF



All (New and Existing) Construction

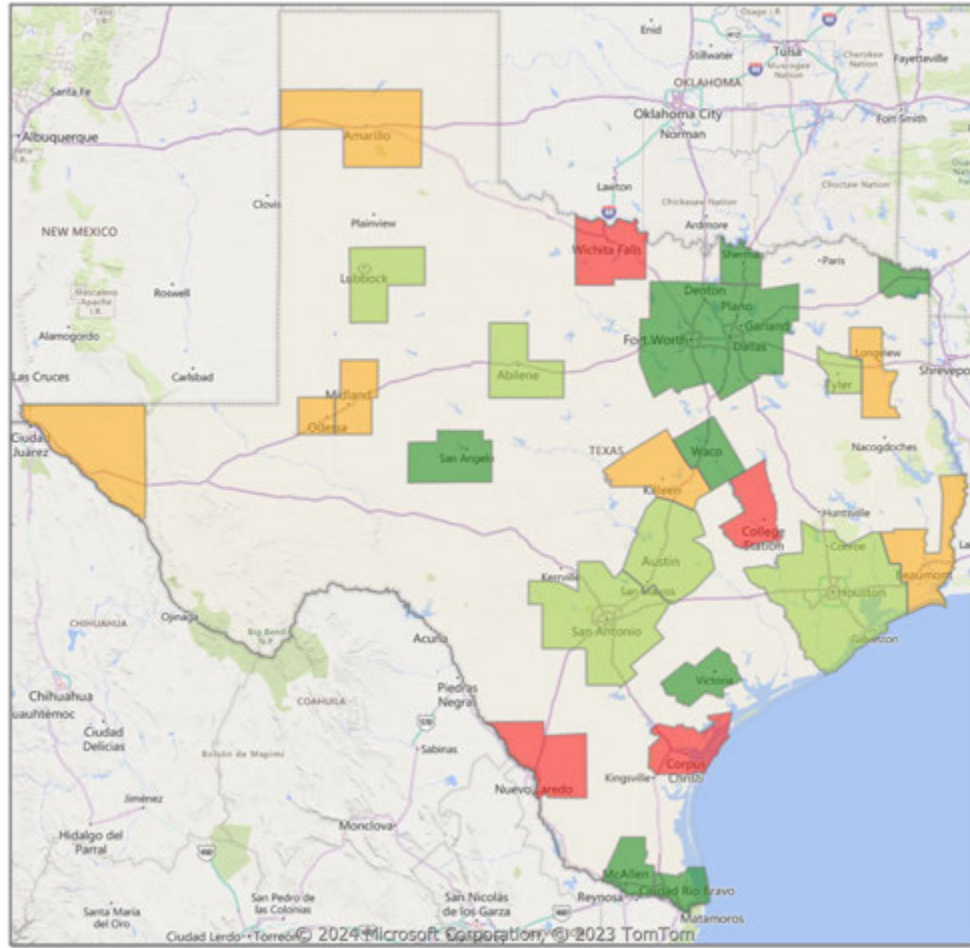
Months Inventory



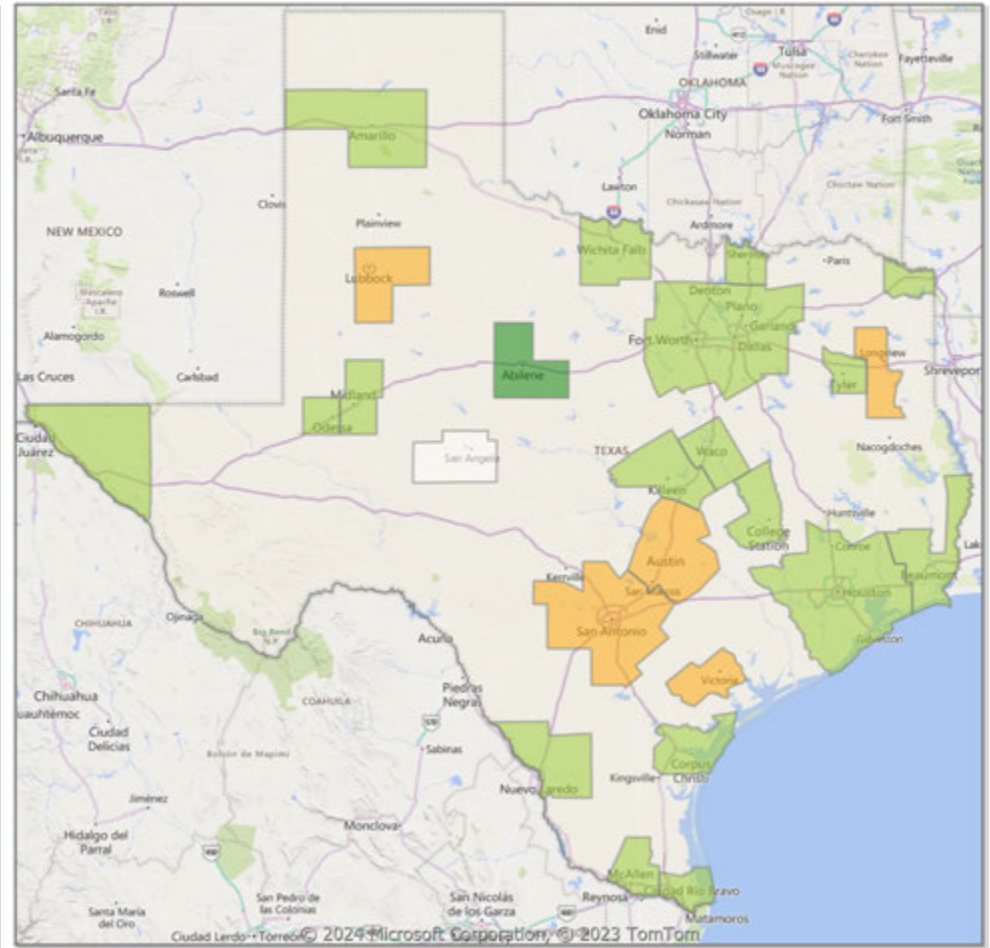
* Closed Sale counts for most recent 3 months are Preliminary.

Comparison By Metropolitan Statistical Area in Texas

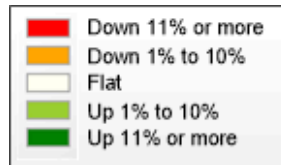
Residential* Closed Sales YoY Percentage Change



Residential* Avg Close Price Per SqFt YoY Percentage Change

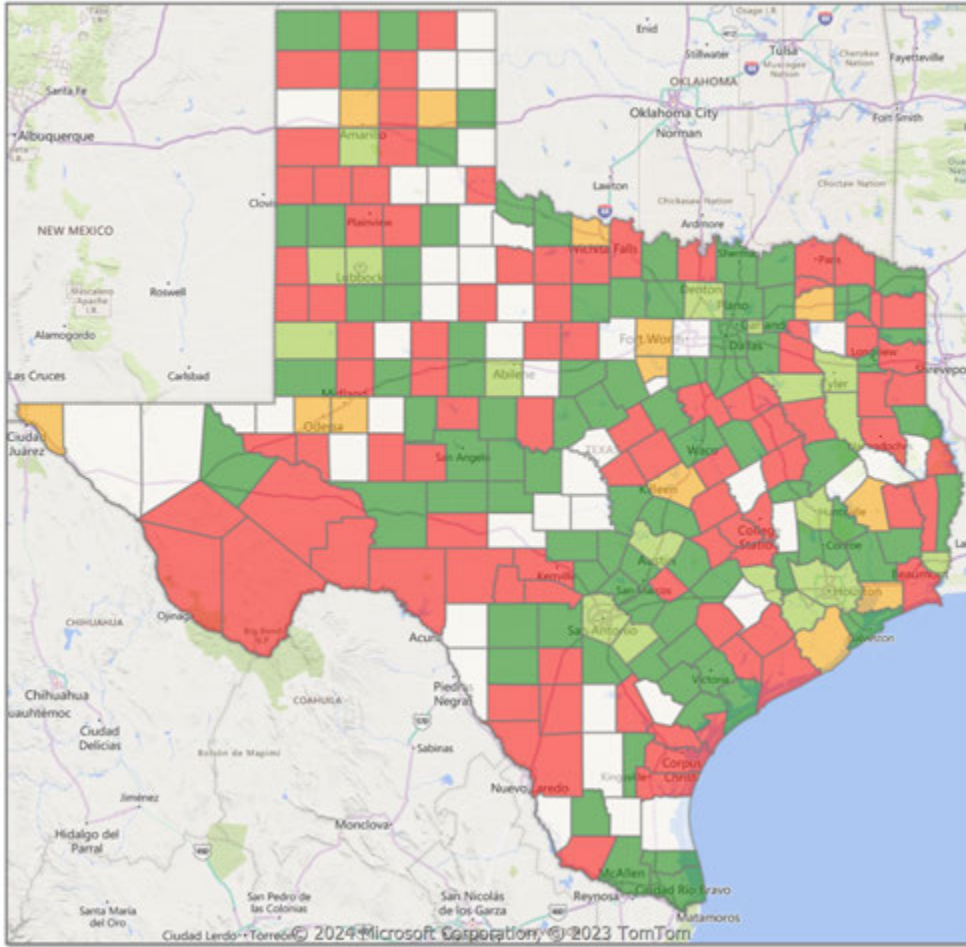


* Residential includes Single Family, Condominium and Townhouse.

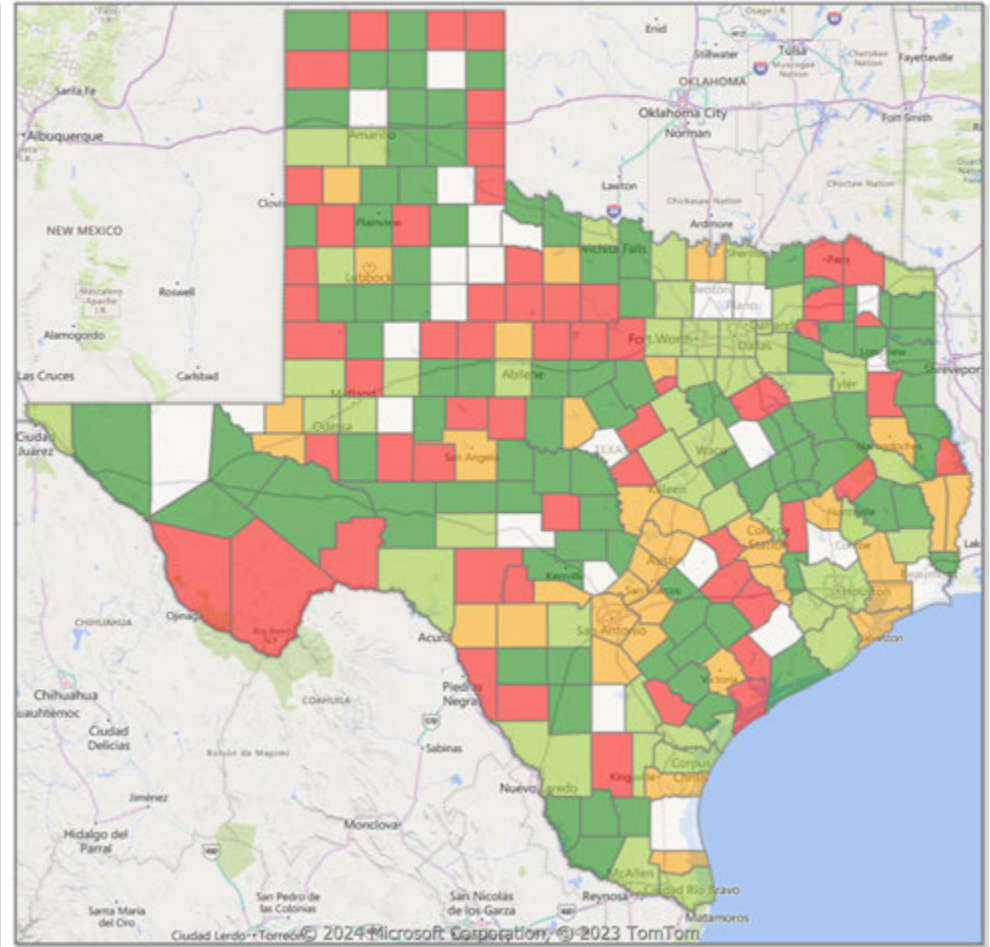


Comparison By County in Texas

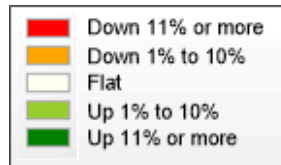
**Residential* Closed Sales
YoY Percentage Change**



**Residential* Avg Close Price Per SqFt
YoY Percentage Change**



* Residential includes Single Family, Condominium and Townhouse.



Market Analysis By Metropolitan Statistical Area: Lubbock

Property Type	Closed Sales*	YoY%	Dollar Volume	YoY%	Average Price	YoY%	Median Price	YoY%	Price/Sqft	YoY%	DOM	New Listings	Active Listings	Pending Sales	Months Inventory	Close To OLP
All(New and Existing)																
Residential (SF/COND/TH)	281	6.0%	\$75,737,593	-1.4%	\$269,529	-7.0%	\$225,000	-11.3%	\$131	-1.6%	52	740	1,291	420	3.4	94.4%
YTD:	281	6.0%	\$75,737,593	-1.4%	\$269,529	-7.0%	\$225,000	-11.3%	\$131	-1.6%	52	740	1,291	420		94.4%
Single Family	279	9.0%	\$75,467,108	2.0%	\$270,491	-6.4%	\$225,210	-13.4%	\$131	-1.3%	52	722	1,230	410	3.3	94.5%
YTD:	279	9.0%	\$75,467,108	2.0%	\$270,491	-6.4%	\$225,210	-13.4%	\$131	-1.3%	52	722	1,230	410		94.5%
Townhouse	1	-85.7%	\$203,000	-86.3%	\$203,000	-4.0%	\$203,000	-3.3%	\$125	-6.1%	39	12	52	6	6.8	97.1%
YTD:	1	-85.7%	\$203,000	-86.3%	\$203,000	-4.0%	\$203,000	-3.3%	\$125	-6.1%	39	12	52	6		97.1%
Condominium	1	-50.0%	\$80,000	-94.0%	\$80,000	-88.1%	\$80,000	-88.1%	\$117	-33.8%	33	6	9	4	5.4	88.9%
YTD:	1	-50.0%	\$80,000	-94.0%	\$80,000	-88.1%	\$80,000	-88.1%	\$117	-33.8%	33	6	9	4		88.9%

* Closed Sale counts for most recent 3 months are Preliminary.

Existing Home																
Residential (SF/COND/TH)	204	0.5%	\$50,553,588	-9.1%	\$247,812	-9.5%	\$210,000	-4.6%	\$120	-5.1%	52	524	902	285	3.0	93.1%
YTD:	204	0.5%	\$50,553,588	-9.1%	\$247,812	-9.5%	\$210,000	-4.6%	\$120	-5.1%	52	524	902	285		93.1%
Single Family	201	3.6%	\$50,032,743	-5.2%	\$248,919	-8.5%	\$210,000	-6.8%	\$120	-4.5%	53	516	876	280	3.0	93.1%
YTD:	201	3.6%	\$50,032,743	-5.2%	\$248,919	-8.5%	\$210,000	-6.8%	\$120	-4.5%	53	516	876	280		93.1%
Townhouse	1	-85.7%	\$203,000	-86.3%	\$203,000	-4.0%	\$203,000	-3.3%	\$125	-6.1%	39	2	18	1	5.1	97.1%
YTD:	1	-85.7%	\$203,000	-86.3%	\$203,000	-4.0%	\$203,000	-3.3%	\$125	-6.1%	39	2	18	1		97.1%
Condominium	1	-50.0%	\$80,000	-94.0%	\$80,000	-88.1%	\$80,000	-88.1%	\$117	-33.8%	33	6	8	4	4.8	88.9%
YTD:	1	-50.0%	\$80,000	-94.0%	\$80,000	-88.1%	\$80,000	-88.1%	\$117	-33.8%	33	6	8	4		88.9%

* Closed Sale counts for most recent 3 months are Preliminary.

New Construction																
Residential (SF/COND/TH)	77	24.2%	\$25,137,636	18.5%	\$326,463	-4.6%	\$276,315	-11.6%	\$161	3.2%	50	216	389	135	4.6	97.8%
YTD:	77	24.2%	\$25,137,636	18.5%	\$326,463	-4.6%	\$276,315	-11.6%	\$161	3.2%	50	216	389	135		97.8%
Single Family	77	24.2%	\$25,137,636	18.5%	\$326,463	-4.6%	\$276,315	-11.6%	\$161	3.2%	50	206	354	130	4.4	97.8%
YTD:	77	24.2%	\$25,137,636	18.5%	\$326,463	-4.6%	\$276,315	-11.6%	\$161	3.2%	50	206	354	130		97.8%
Townhouse	-	0.0%	-	0.0%	-	0.0%	-	0.0%	-	0.0%	-	10	34	5	8.2	0.0%
YTD:	-	0.0%	-	0.0%	-	0.0%	-	0.0%	-	0.0%	-	10	34	5		0.0%
Condominium	-	0.0%	-	0.0%	-	0.0%	-	0.0%	-	0.0%	-	-	1	0	-	0.0%
YTD:	-	0.0%	-	0.0%	-	0.0%	-	0.0%	-	0.0%	-	0	1	0		0.0%

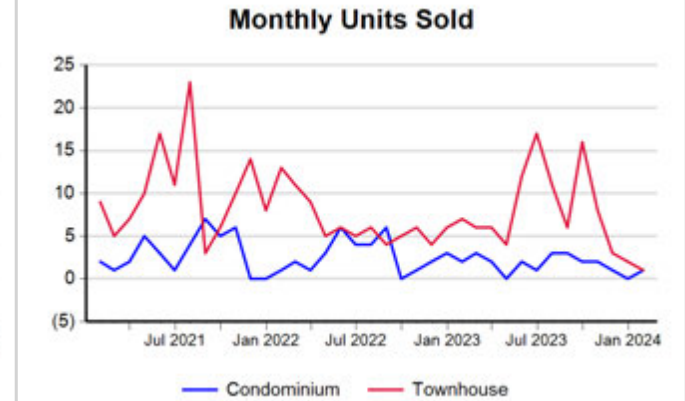
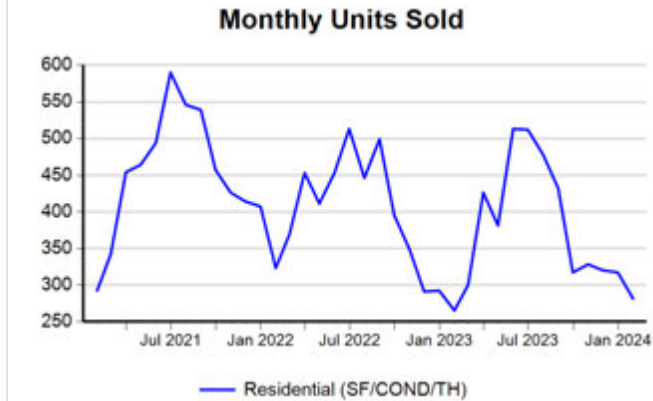
* Closed Sale counts for most recent 3 months are Preliminary.

Trend Analysis By Metropolitan Statistical Area: Lubbock

Residential, All (New and Existing)

Single Family, New vs. Existing

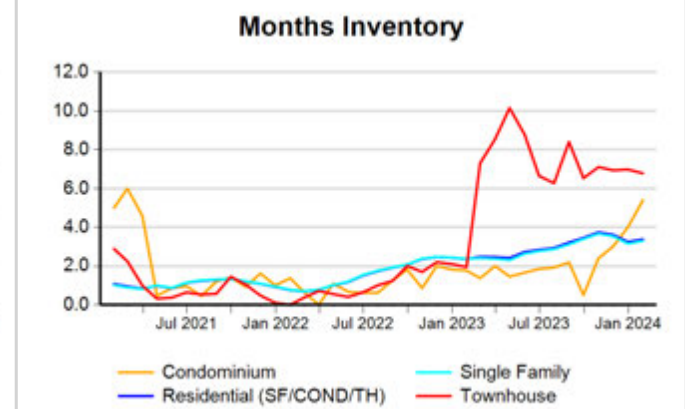
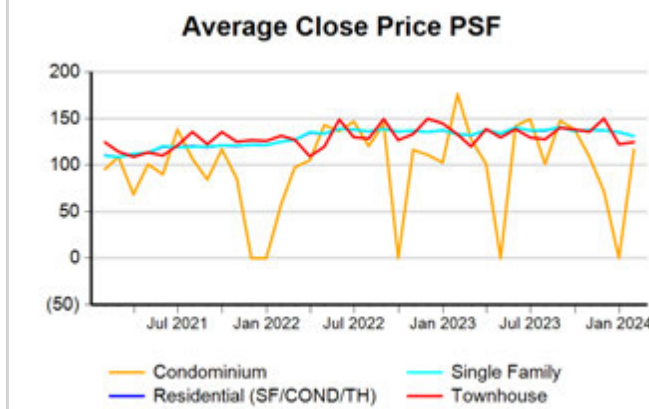
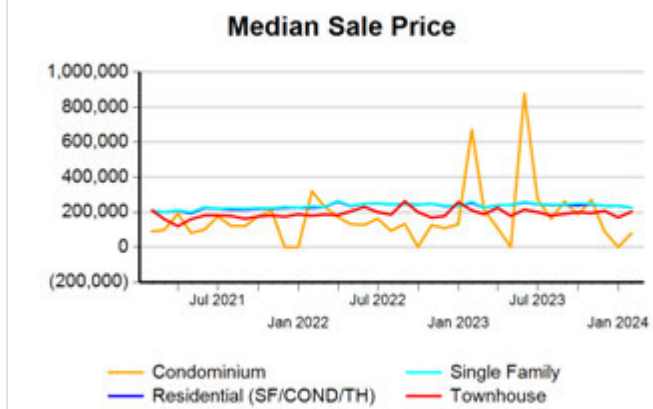
COND/TH, All (New and Existing)



All (New and Existing) Construction

All (New and Existing) Construction

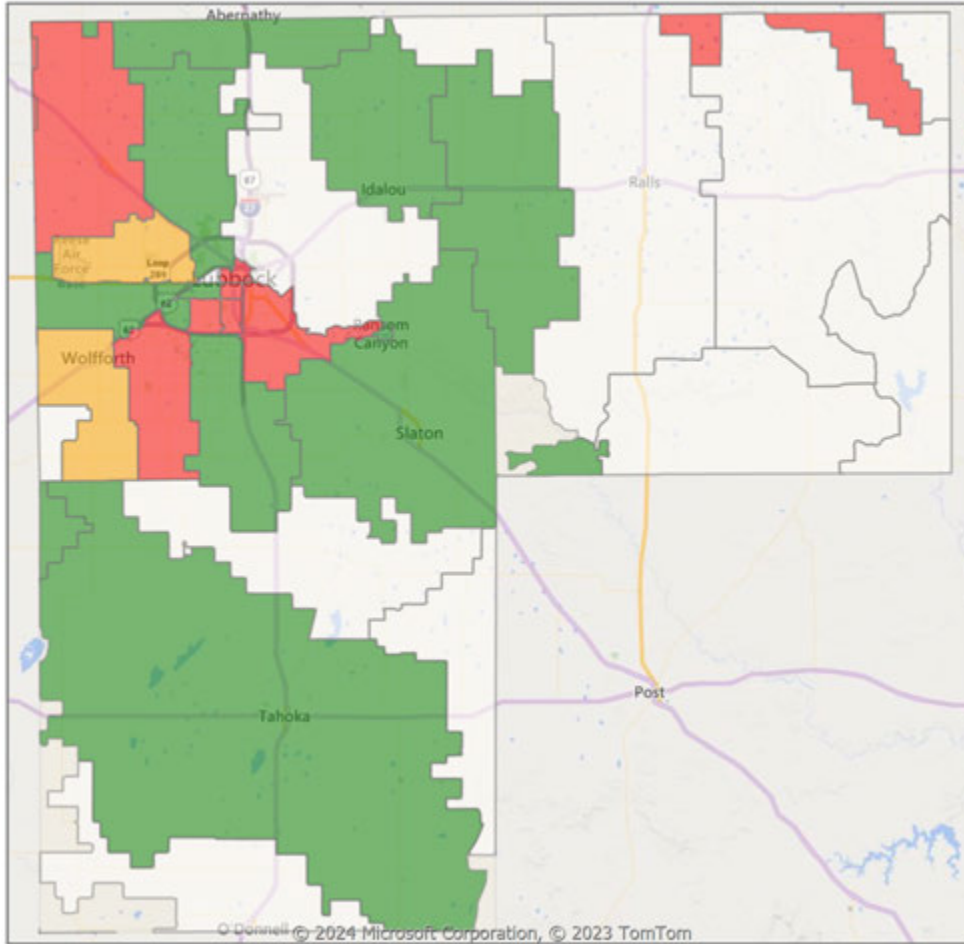
All (New and Existing) Construction



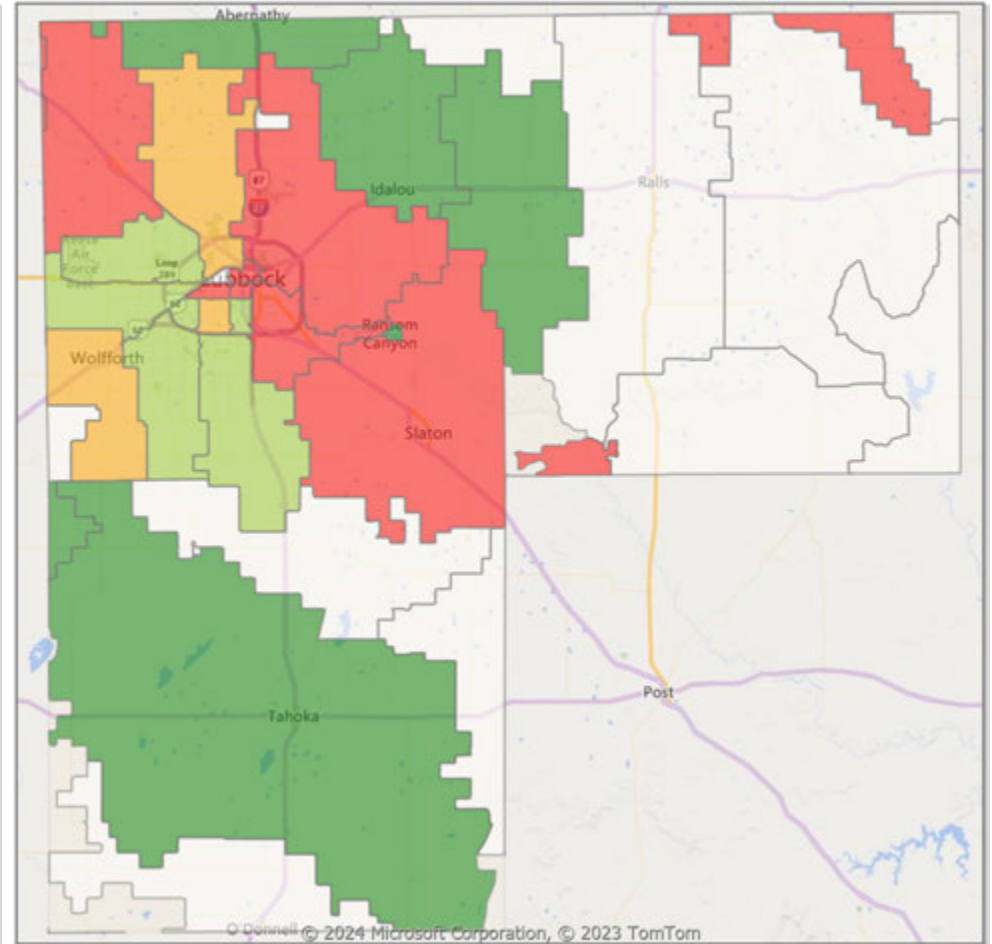
* Closed Sale counts for most recent 3 months are Preliminary.

Comparison By Zip Code* in Lubbock MSA

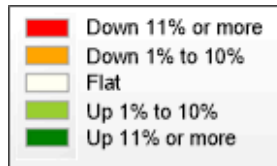
Residential Closed Sales
YoY Percentage Change**



Residential Avg Close Price Per SqFt
YoY Percentage Change**

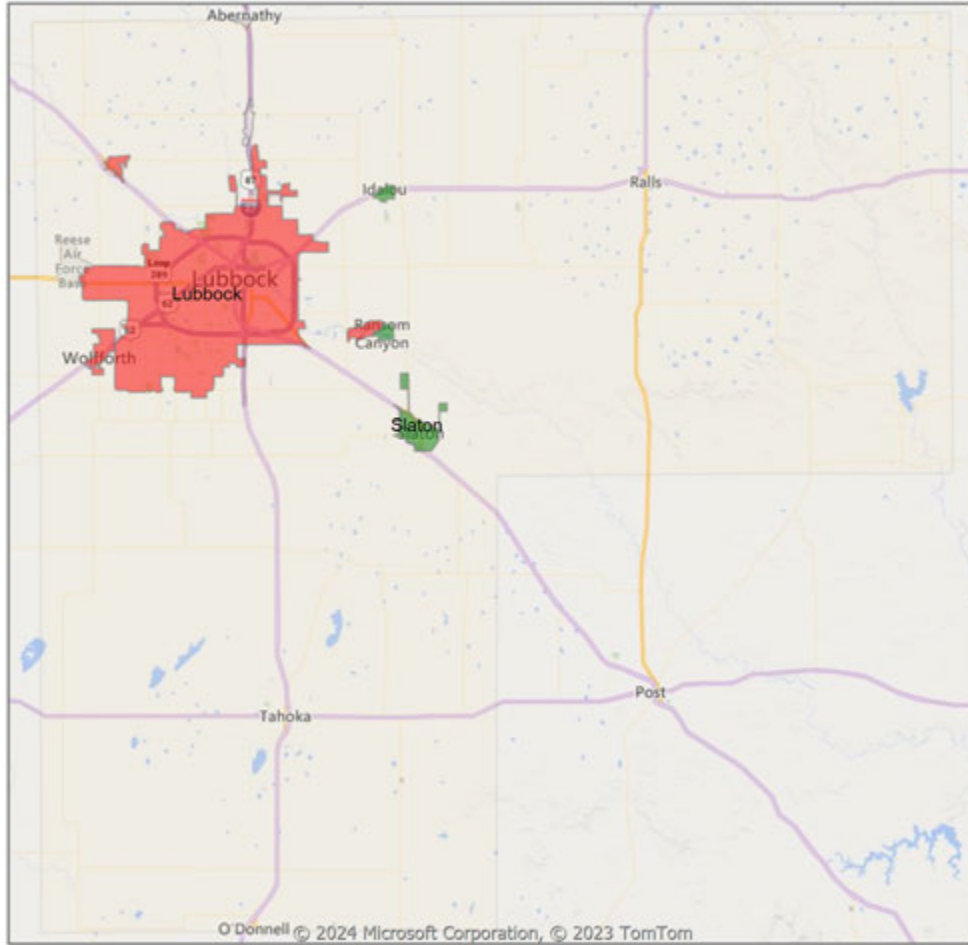


* US Census Zip Code Tabulation Area
** Residential includes Single Family, Condominium and Townhouse.

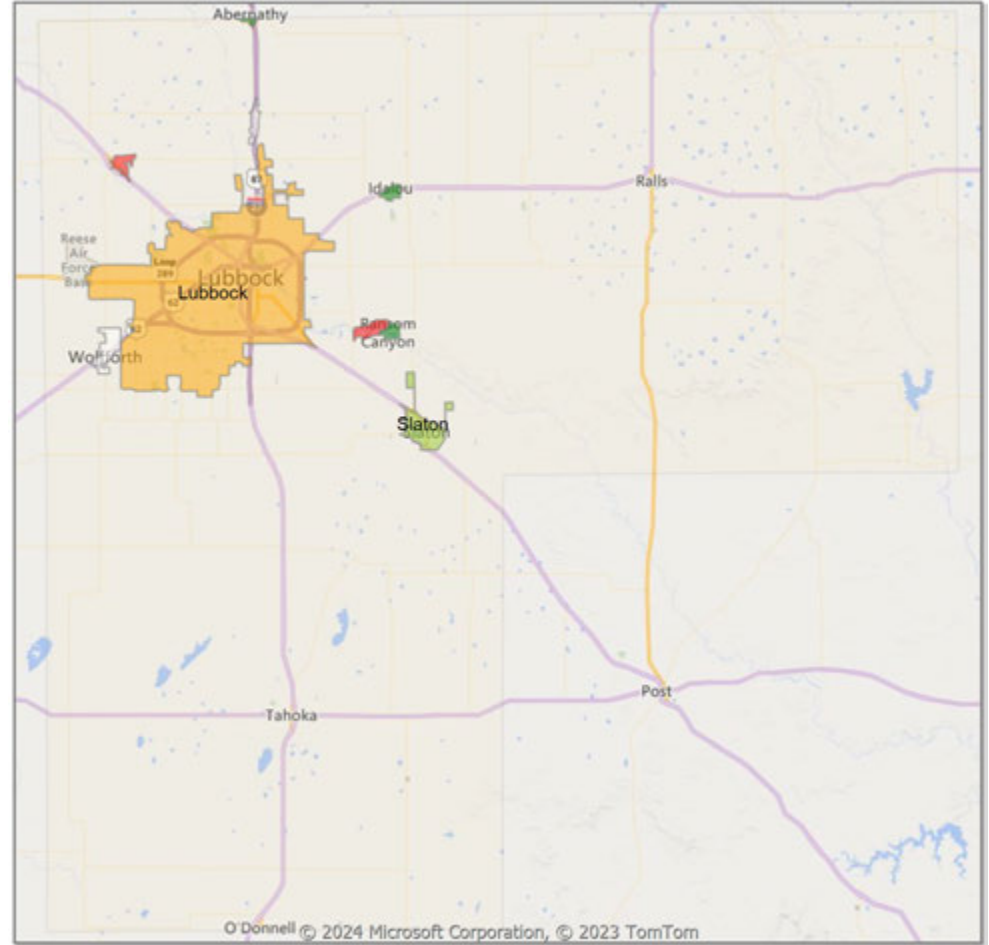


Comparison By Local Market Area* in Lubbock MSA

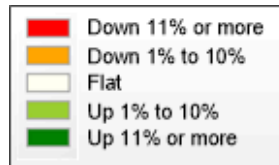
Residential Closed Sales
YoY Percentage Change**



Residential Avg Close Price Per SqFt
YoY Percentage Change**



* Census Place Group
** Residential includes Single Family, Condominium and Townhouse.



Market Analysis By County: Hockley County

Property Type	Closed Sales*	YoY%	Dollar Volume	YoY%	Average Price	YoY%	Median Price	YoY%	Price/Sqft	YoY%	DOM	New Listings	Active Listings	Pending Sales	Months Inventory	Close To OLP
All(New and Existing)																
Residential (SF/COND/TH)	11	10.0%	\$3,012,930	14.0%	\$273,903	3.6%	\$217,000	-5.4%	\$113	9.4%	90	25	80	18	5.3	91.8%
YTD:	11	10.0%	\$3,012,930	14.0%	\$273,903	3.6%	\$217,000	-5.4%	\$113	9.4%	90	25	80	18		91.8%
Single Family	11	10.0%	\$3,012,930	14.0%	\$273,903	3.6%	\$217,000	-5.4%	\$113	9.4%	90	25	79	18	5.2	91.8%
YTD:	11	10.0%	\$3,012,930	14.0%	\$273,903	3.6%	\$217,000	-5.4%	\$113	9.4%	90	25	79	18		91.8%
Townhouse	-	0.0%	-	0.0%	-	0.0%	-	0.0%	-	0.0%	-	-	-	-	-	0.0%
YTD:	-	0.0%	-	0.0%	-	0.0%	-	0.0%	-	0.0%	-	-	-	-	-	0.0%
Condominium	-	0.0%	-	0.0%	-	0.0%	-	0.0%	-	0.0%	-	-	1	-	-	0.0%
YTD:	-	0.0%	-	0.0%	-	0.0%	-	0.0%	-	0.0%	-	-	1	-	-	0.0%
Existing Home																
Residential (SF/COND/TH)	9	0.0%	\$2,563,400	2.8%	\$284,822	2.8%	\$217,000	-19.3%	\$107	2.9%	104	24	76	14	5.2	90.2%
YTD:	9	0.0%	\$2,563,400	2.8%	\$284,822	2.8%	\$217,000	-19.3%	\$107	2.9%	104	24	76	14		90.2%
Single Family	9	0.0%	\$2,563,400	2.8%	\$284,822	2.8%	\$217,000	-19.3%	\$107	2.9%	104	24	75	14	5.1	90.2%
YTD:	9	0.0%	\$2,563,400	2.8%	\$284,822	2.8%	\$217,000	-19.3%	\$107	2.9%	104	24	75	14		90.2%
Townhouse	-	0.0%	-	0.0%	-	0.0%	-	0.0%	-	0.0%	-	-	-	-	-	0.0%
YTD:	-	0.0%	-	0.0%	-	0.0%	-	0.0%	-	0.0%	-	-	-	-	-	0.0%
Condominium	-	0.0%	-	0.0%	-	0.0%	-	0.0%	-	0.0%	-	-	1	-	-	0.0%
YTD:	-	0.0%	-	0.0%	-	0.0%	-	0.0%	-	0.0%	-	-	1	-	-	0.0%
New Construction																
Residential (SF/COND/TH)	2	100.0%	\$449,530	201.7%	\$224,765	50.9%	\$224,765	50.9%	\$141	42.2%	25	1	4	4	6.9	98.6%
YTD:	2	100.0%	\$449,530	201.7%	\$224,765	50.9%	\$224,765	50.9%	\$141	42.2%	25	1	4	4		98.6%
Single Family	2	100.0%	\$449,530	201.7%	\$224,765	50.9%	\$224,765	50.9%	\$141	42.2%	25	1	4	4	6.9	98.6%
YTD:	2	100.0%	\$449,530	201.7%	\$224,765	50.9%	\$224,765	50.9%	\$141	42.2%	25	1	4	4		98.6%
Townhouse	-	0.0%	-	0.0%	-	0.0%	-	0.0%	-	0.0%	-	-	-	-	-	0.0%
YTD:	-	0.0%	-	0.0%	-	0.0%	-	0.0%	-	0.0%	-	-	-	-	-	0.0%
Condominium	-	0.0%	-	0.0%	-	0.0%	-	0.0%	-	0.0%	-	-	-	-	-	0.0%
YTD:	-	0.0%	-	0.0%	-	0.0%	-	0.0%	-	0.0%	-	-	-	-	-	0.0%

* Closed Sale counts for most recent 3 months are Preliminary.

Market Analysis By County: Lubbock County

Property Type	Closed Sales*	YoY%	Dollar Volume	YoY%	Average Price	YoY%	Median Price	YoY%	Price/Sqft	YoY%	DOM	New Listings	Active Listings	Pending Sales	Months Inventory	Close To OLP
All(New and Existing)																
Residential (SF/COND/TH)	274	5.0%	\$73,705,180	-3.6%	\$268,997	-8.2%	\$225,000	-13.5%	\$131	-2.5%	52	722	1,247	415	3.3	94.4%
YTD:	274	5.0%	\$73,705,180	-3.6%	\$268,997	-8.2%	\$225,000	-13.5%	\$131	-2.5%	52	722	1,247	415		94.4%
Single Family	272	7.9%	\$73,434,979	-0.3%	\$269,982	-7.6%	\$225,420	-13.5%	\$131	-2.2%	52	704	1,186	405	3.2	94.4%
YTD:	272	7.9%	\$73,434,979	-0.3%	\$269,982	-7.6%	\$225,420	-13.5%	\$131	-2.2%	52	704	1,186	405		94.4%
Townhouse	1	-85.7%	\$203,000	-86.3%	\$203,000	-4.0%	\$203,000	-3.3%	\$125	-6.1%	39	12	52	6	6.8	97.1%
YTD:	1	-85.7%	\$203,000	-86.3%	\$203,000	-4.0%	\$203,000	-3.3%	\$125	-6.1%	39	12	52	6		97.1%
Condominium	1	-50.0%	\$80,000	-94.0%	\$80,000	-88.1%	\$80,000	-88.1%	\$117	-33.8%	33	6	9	4	5.7	88.9%
YTD:	1	-50.0%	\$80,000	-94.0%	\$80,000	-88.1%	\$80,000	-88.1%	\$117	-33.8%	33	6	9	4		88.9%
Existing Home																
Residential (SF/COND/TH)	199	0.0%	\$49,749,969	-9.9%	\$250,000	-9.9%	\$210,000	-6.5%	\$121	-5.9%	52	507	866	282	3.0	93.1%
YTD:	199	0.0%	\$49,749,969	-9.9%	\$250,000	-9.9%	\$210,000	-6.5%	\$121	-5.9%	52	507	866	282		93.1%
Single Family	196	3.2%	\$49,227,413	-6.1%	\$251,160	-9.0%	\$212,000	-8.2%	\$121	-5.4%	52	499	840	277	2.9	93.1%
YTD:	196	3.2%	\$49,227,413	-6.1%	\$251,160	-9.0%	\$212,000	-8.2%	\$121	-5.4%	52	499	840	277		93.1%
Townhouse	1	-85.7%	\$203,000	-86.3%	\$203,000	-4.0%	\$203,000	-3.3%	\$125	-6.1%	39	2	18	1	5.1	97.1%
YTD:	1	-85.7%	\$203,000	-86.3%	\$203,000	-4.0%	\$203,000	-3.3%	\$125	-6.1%	39	2	18	1		97.1%
Condominium	1	-50.0%	\$80,000	-94.0%	\$80,000	-88.1%	\$80,000	-88.1%	\$117	-33.8%	33	6	8	4	5.1	88.9%
YTD:	1	-50.0%	\$80,000	-94.0%	\$80,000	-88.1%	\$80,000	-88.1%	\$117	-33.8%	33	6	8	4		88.9%
New Construction																
Residential (SF/COND/TH)	75	21.0%	\$23,914,842	12.7%	\$318,865	-6.8%	\$272,305	-12.8%	\$160	2.5%	51	215	381	133	4.5	97.8%
YTD:	75	21.0%	\$23,914,842	12.7%	\$318,865	-6.8%	\$272,305	-12.8%	\$160	2.5%	51	215	381	133		97.8%
Single Family	75	21.0%	\$23,914,842	12.7%	\$318,865	-6.8%	\$272,305	-12.8%	\$160	2.5%	51	205	346	128	4.3	97.8%
YTD:	75	21.0%	\$23,914,842	12.7%	\$318,865	-6.8%	\$272,305	-12.8%	\$160	2.5%	51	205	346	128		97.8%
Townhouse	-	0.0%	-	0.0%	-	0.0%	-	0.0%	-	0.0%	-	10	34	5	8.2	0.0%
YTD:	-	0.0%	-	0.0%	-	0.0%	-	0.0%	-	0.0%	-	10	34	5		0.0%
Condominium	-	0.0%	-	0.0%	-	0.0%	-	0.0%	-	0.0%	-	-	1	-	-	0.0%
YTD:	-	0.0%	-	0.0%	-	0.0%	-	0.0%	-	0.0%	-	-	1	-		0.0%

* Closed Sale counts for most recent 3 months are Preliminary.

Trend Analysis By County: Hockley County

Residential, All (New and Existing)



Single Family, New vs. Existing



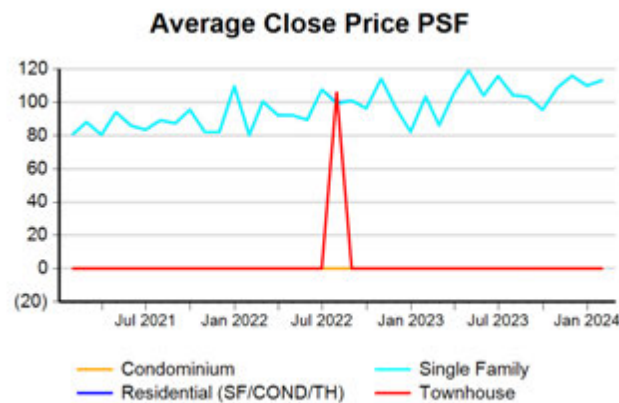
COND/TH, All (New and Existing)



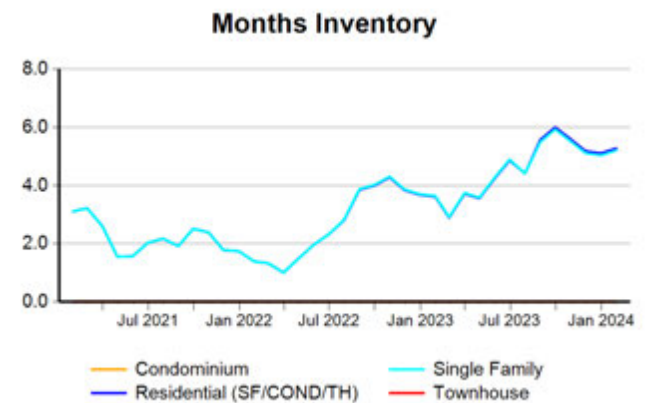
All (New and Existing) Construction



All (New and Existing) Construction



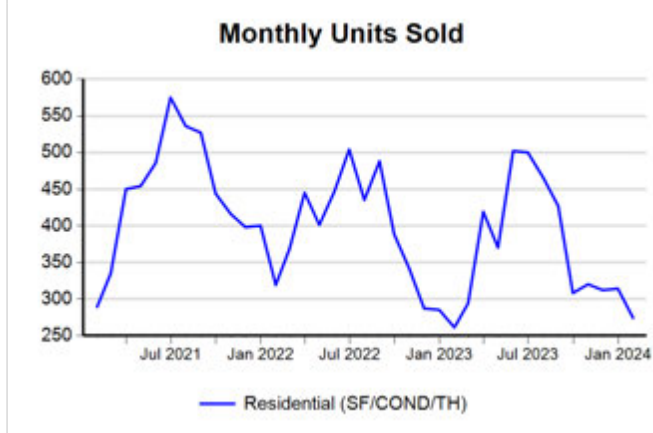
All (New and Existing) Construction



* Closed Sale counts for most recent 3 months are Preliminary.

Trend Analysis By County: Lubbock County

Residential, All (New and Existing)



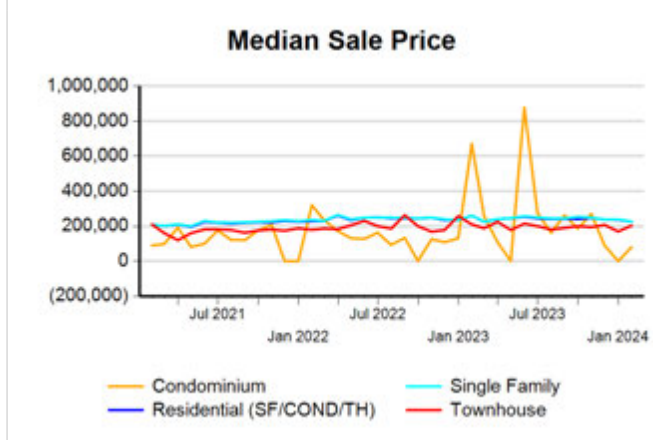
Single Family, New vs. Existing



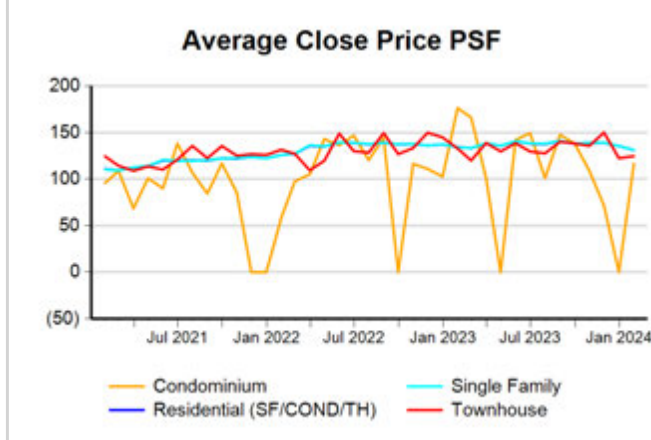
COND/TH, All (New and Existing)



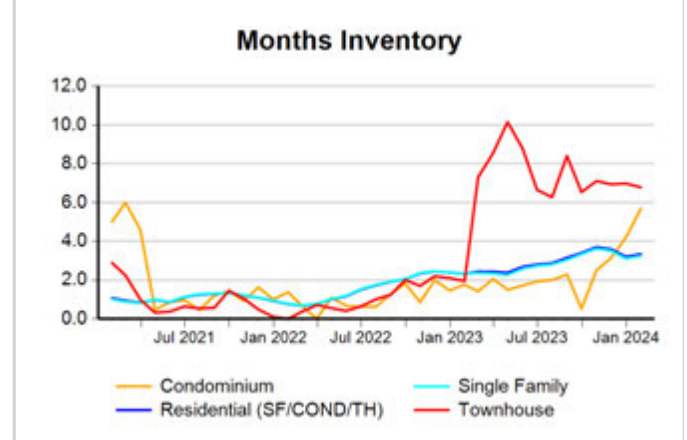
All (New and Existing) Construction



All (New and Existing) Construction



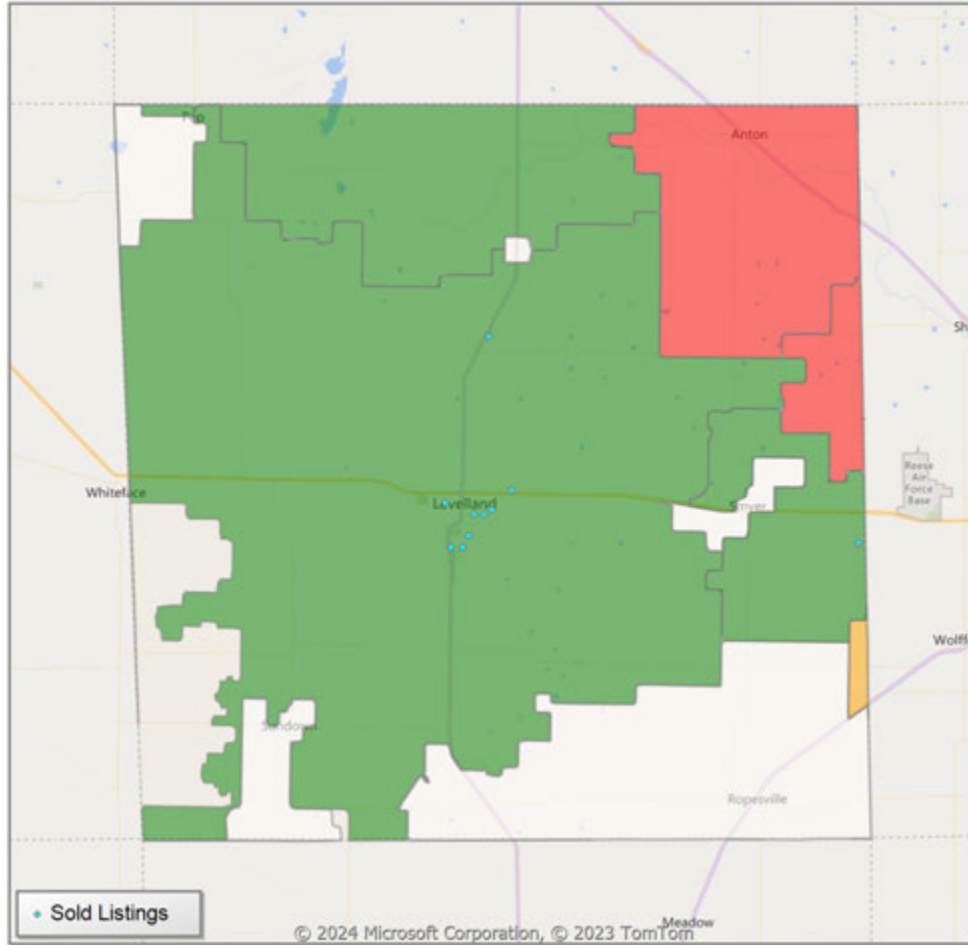
All (New and Existing) Construction



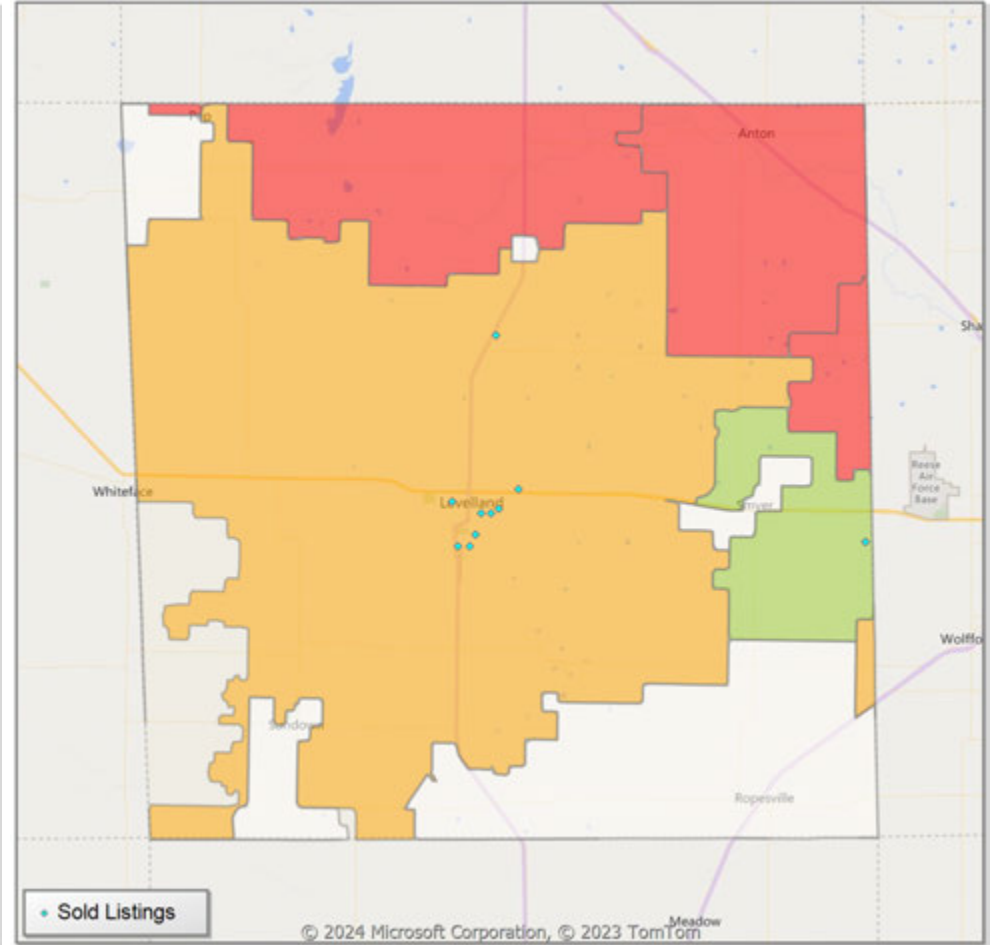
* Closed Sale counts for most recent 3 months are Preliminary.

Comparison By Zip Code* in Hockley County

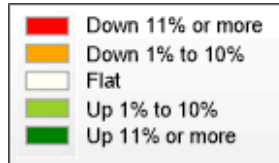
Residential Closed Sales
YoY Percentage Change**



Residential Avg Close Price Per SqFt
YoY Percentage Change**

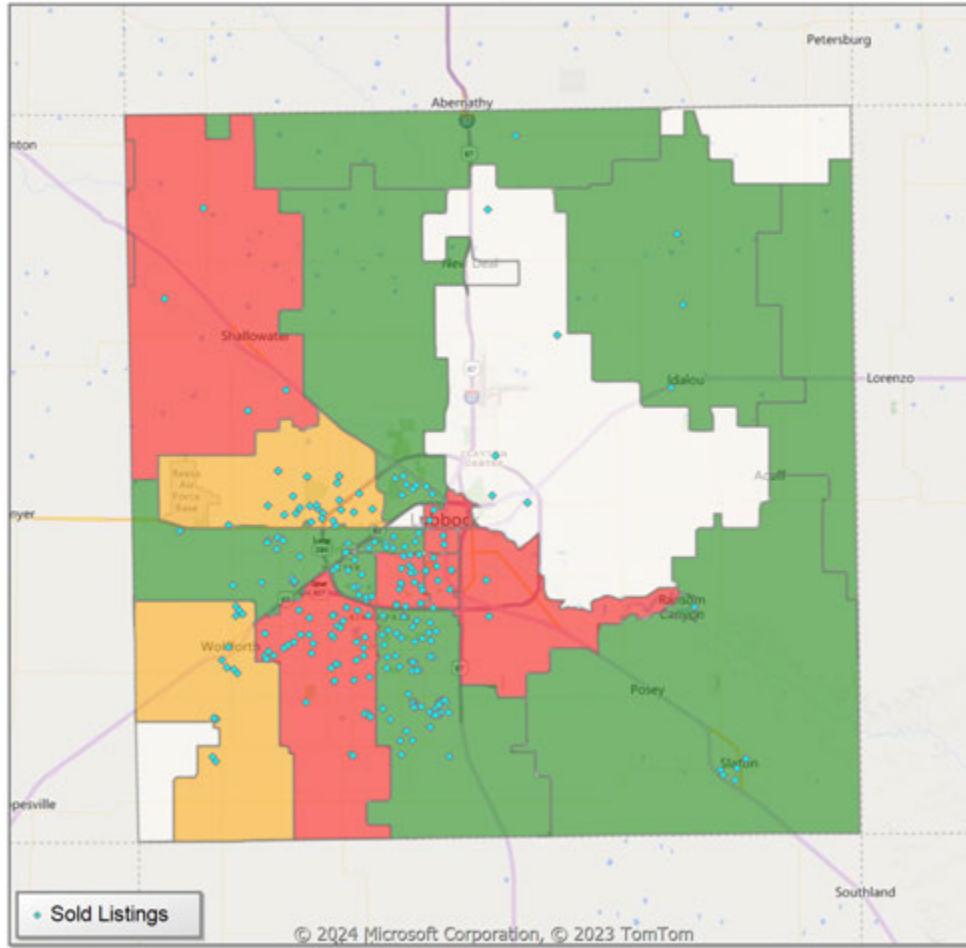


* US Census Zip Code Tabulation Area
** Residential includes Single Family, Condominium and Townhouse.

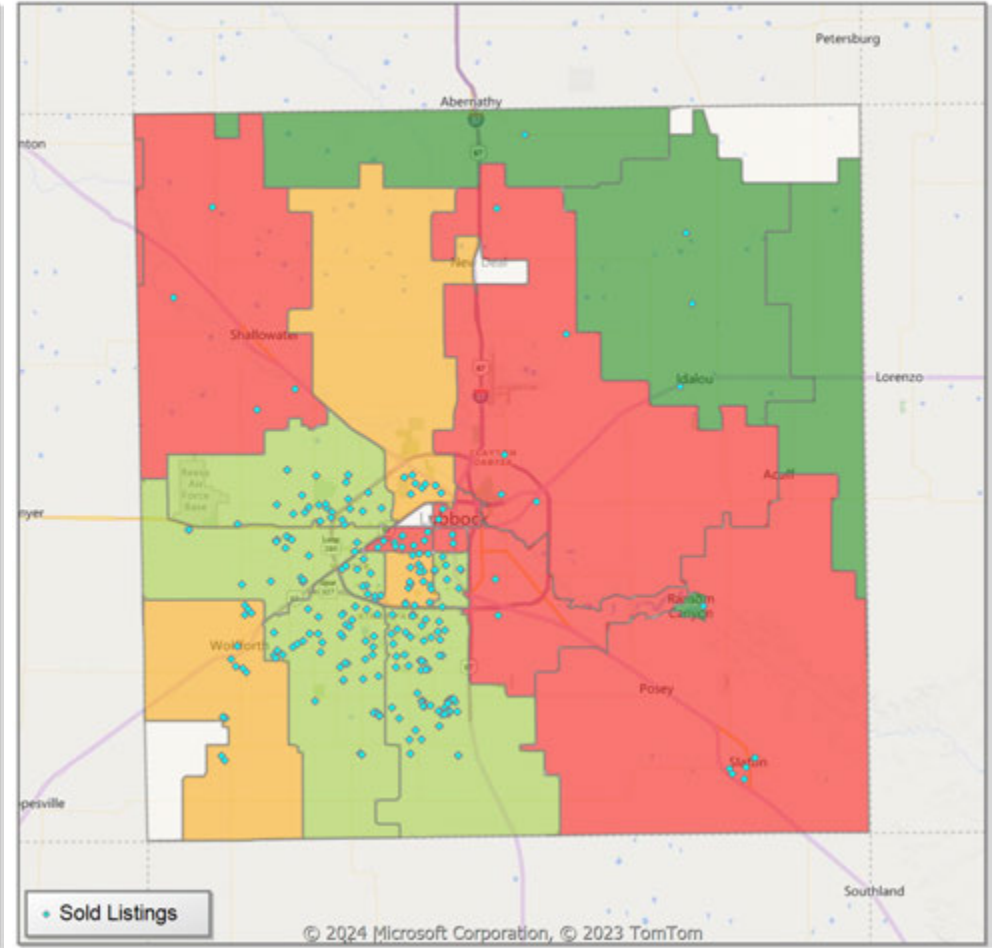


Comparison By Zip Code* in Lubbock County

Residential Closed Sales
YoY Percentage Change**

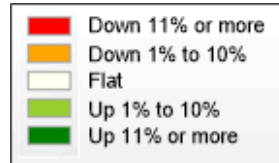


Residential Avg Close Price Per SqFt
YoY Percentage Change**



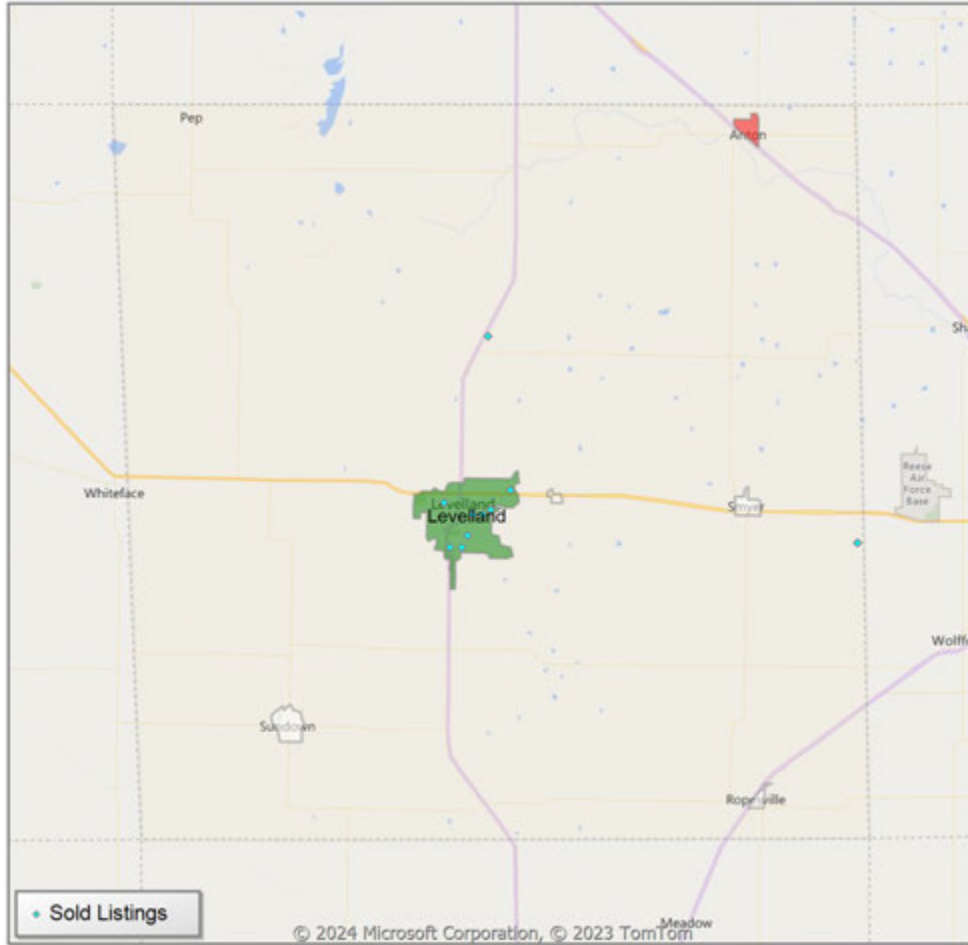
* US Census Zip Code Tabulation Area

** Residential includes Single Family, Condominium and Townhouse.

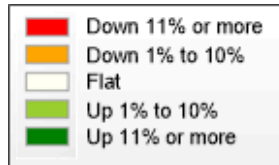
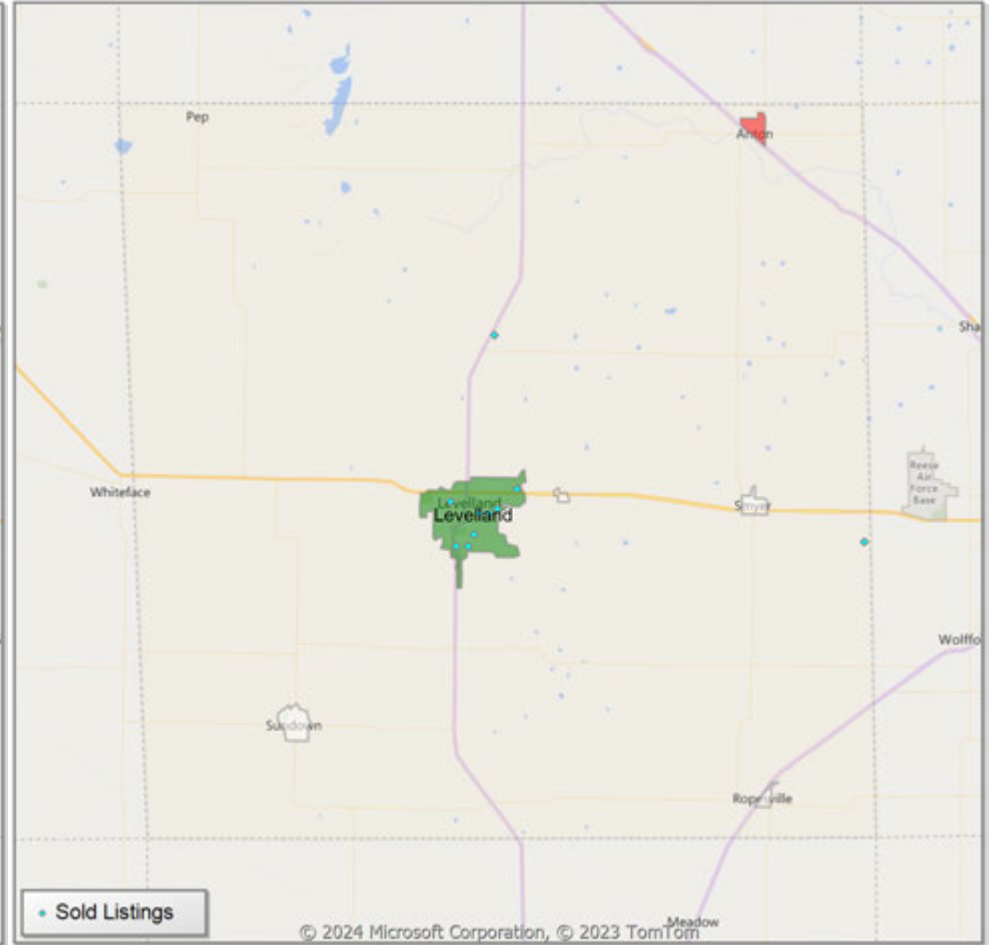


Comparison By Local Market Area* in Hockley County

Residential Closed Sales
YoY Percentage Change**



Residential Avg Close Price Per SqFt
YoY Percentage Change**

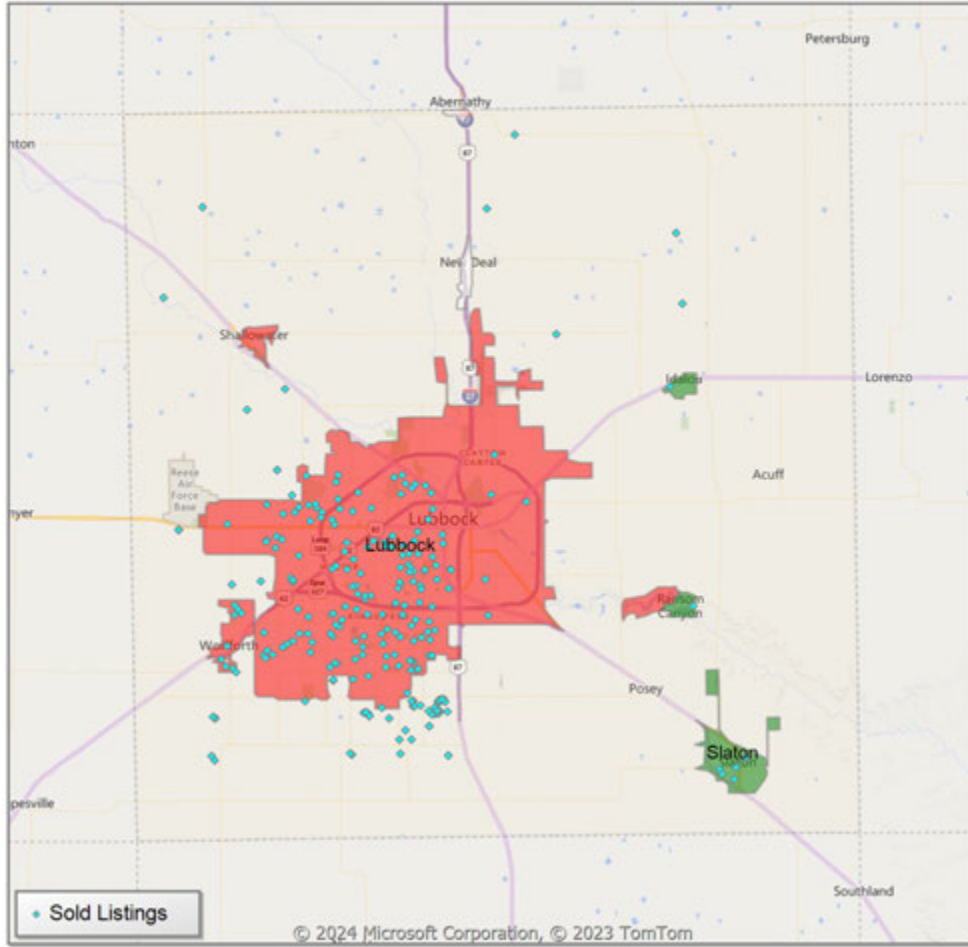


* Census Place Group

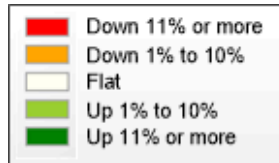
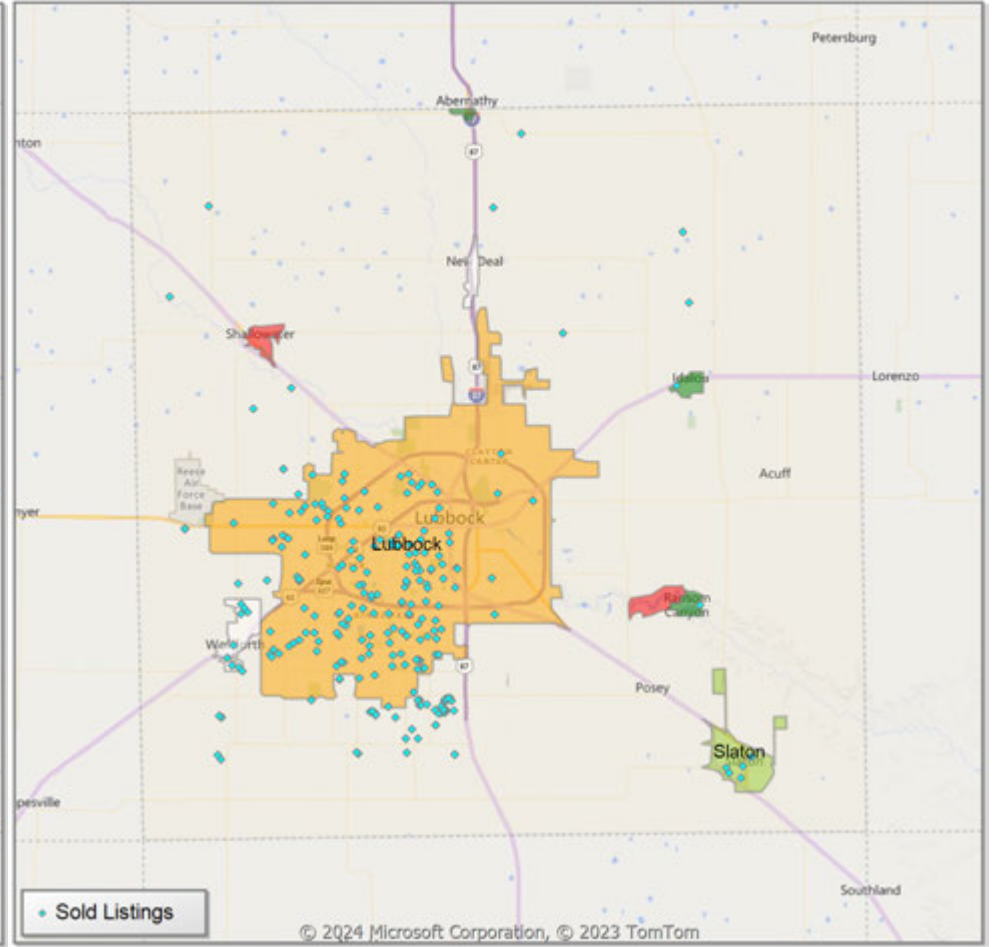
** Residential includes Single Family, Condominium and Townhouse.

Comparison By Local Market Area* in Lubbock County

Residential Closed Sales
YoY Percentage Change**



Residential Avg Close Price Per SqFt
YoY Percentage Change**



* Census Place Group

** Residential includes Single Family, Condominium and Townhouse.

Market Analysis By Local Market Area*: Abernathy

Property Type	Closed Sales**	YoY%	Dollar Volume	YoY%	Average Price	YoY%	Median Price	YoY%	Price/Sqft	YoY%	DOM	New Listings	Active Listings	Pending Sales	Months Inventory	Close To OLP
All(New and Existing)																
Residential (SF/COND/TH)	1	0.0%	\$173,000	-13.5%	\$173,000	-13.5%	\$173,000	-13.5%	\$130	70.0%	35	4	8	3	4.4	98.9%
YTD:	1	0.0%	\$173,000	-13.5%	\$173,000	-13.5%	\$173,000	-13.5%	\$130	70.0%	35	4	8	3		98.9%
Single Family	1	0.0%	\$173,000	-13.5%	\$173,000	-13.5%	\$173,000	-13.5%	\$130	70.0%	35	4	8	3	4.4	98.9%
YTD:	1	0.0%	\$173,000	-13.5%	\$173,000	-13.5%	\$173,000	-13.5%	\$130	70.0%	35	4	8	3		98.9%
Townhouse	-	0.0%	-	0.0%	-	0.0%	-	0.0%	-	0.0%	-	-	-	-	-	0.0%
YTD:	-	0.0%	-	0.0%	-	0.0%	-	0.0%	-	0.0%	-	-	-	-	-	0.0%
Condominium	-	0.0%	-	0.0%	-	0.0%	-	0.0%	-	0.0%	-	-	-	-	-	0.0%
YTD:	-	0.0%	-	0.0%	-	0.0%	-	0.0%	-	0.0%	-	-	-	-	-	0.0%
Existing Home																
Residential (SF/COND/TH)	1	0.0%	\$173,000	-13.5%	\$173,000	-13.5%	\$173,000	-13.5%	\$130	70.0%	35	4	8	3	4.4	98.9%
YTD:	1	0.0%	\$173,000	-13.5%	\$173,000	-13.5%	\$173,000	-13.5%	\$130	70.0%	35	4	8	3		98.9%
Single Family	1	0.0%	\$173,000	-13.5%	\$173,000	-13.5%	\$173,000	-13.5%	\$130	70.0%	35	4	8	3	4.4	98.9%
YTD:	1	0.0%	\$173,000	-13.5%	\$173,000	-13.5%	\$173,000	-13.5%	\$130	70.0%	35	4	8	3		98.9%
Townhouse	-	0.0%	-	0.0%	-	0.0%	-	0.0%	-	0.0%	-	-	-	-	-	0.0%
YTD:	-	0.0%	-	0.0%	-	0.0%	-	0.0%	-	0.0%	-	-	-	-	-	0.0%
Condominium	-	0.0%	-	0.0%	-	0.0%	-	0.0%	-	0.0%	-	-	-	-	-	0.0%
YTD:	-	0.0%	-	0.0%	-	0.0%	-	0.0%	-	0.0%	-	-	-	-	-	0.0%
New Construction																
Residential (SF/COND/TH)	-	0.0%	-	0.0%	-	0.0%	-	0.0%	-	0.0%	-	-	-	-	-	0.0%
YTD:	-	0.0%	-	0.0%	-	0.0%	-	0.0%	-	0.0%	-	-	-	-	-	0.0%
Single Family	-	0.0%	-	0.0%	-	0.0%	-	0.0%	-	0.0%	-	-	-	-	-	0.0%
YTD:	-	0.0%	-	0.0%	-	0.0%	-	0.0%	-	0.0%	-	-	-	-	-	0.0%
Townhouse	-	0.0%	-	0.0%	-	0.0%	-	0.0%	-	0.0%	-	-	-	-	-	0.0%
YTD:	-	0.0%	-	0.0%	-	0.0%	-	0.0%	-	0.0%	-	-	-	-	-	0.0%
Condominium	-	0.0%	-	0.0%	-	0.0%	-	0.0%	-	0.0%	-	-	-	-	-	0.0%
YTD:	-	0.0%	-	0.0%	-	0.0%	-	0.0%	-	0.0%	-	-	-	-	-	0.0%

* Local Market Area Code: 2; Type: Census Place Group
 ** Closed Sale counts for most recent 3 months are Preliminary.

Market Analysis By Local Market Area*: Anton

Property Type	Closed Sales**	YoY%	Dollar Volume	YoY%	Average Price	YoY%	Median Price	YoY%	Price/Sqft	YoY%	DOM	New Listings	Active Listings	Pending Sales	Months Inventory	Close To OLP
All(New and Existing)																
Residential (SF/COND/TH)	-	-100.0%	-	-100.0%	-	-100.0%	-	-100.0%	-	-100.0%	-	1	3	1	4.0	0.0%
YTD:	-	-100.0%	-	-100.0%	-	-100.0%	-	-100.0%	-	-100.0%	-	1	3	1		0.0%
Single Family	-	-100.0%	-	-100.0%	-	-100.0%	-	-100.0%	-	-100.0%	-	1	3	1	4.0	0.0%
YTD:	-	-100.0%	-	-100.0%	-	-100.0%	-	-100.0%	-	-100.0%	-	1	3	1		0.0%
Townhouse	-	0.0%	-	0.0%	-	0.0%	-	0.0%	-	0.0%	-	-	-	-	-	0.0%
YTD:	-	0.0%	-	0.0%	-	0.0%	-	0.0%	-	0.0%	-	-	-	-	-	0.0%
Condominium	-	0.0%	-	0.0%	-	0.0%	-	0.0%	-	0.0%	-	-	-	-	-	0.0%
YTD:	-	0.0%	-	0.0%	-	0.0%	-	0.0%	-	0.0%	-	-	-	-	-	0.0%
Existing Home																
Residential (SF/COND/TH)	-	-100.0%	-	-100.0%	-	-100.0%	-	-100.0%	-	-100.0%	-	1	3	1	4.0	0.0%
YTD:	-	-100.0%	-	-100.0%	-	-100.0%	-	-100.0%	-	-100.0%	-	1	3	1		0.0%
Single Family	-	-100.0%	-	-100.0%	-	-100.0%	-	-100.0%	-	-100.0%	-	1	3	1	4.0	0.0%
YTD:	-	-100.0%	-	-100.0%	-	-100.0%	-	-100.0%	-	-100.0%	-	1	3	1		0.0%
Townhouse	-	0.0%	-	0.0%	-	0.0%	-	0.0%	-	0.0%	-	-	-	-	-	0.0%
YTD:	-	0.0%	-	0.0%	-	0.0%	-	0.0%	-	0.0%	-	-	-	-	-	0.0%
Condominium	-	0.0%	-	0.0%	-	0.0%	-	0.0%	-	0.0%	-	-	-	-	-	0.0%
YTD:	-	0.0%	-	0.0%	-	0.0%	-	0.0%	-	0.0%	-	-	-	-	-	0.0%
New Construction																
Residential (SF/COND/TH)	-	0.0%	-	0.0%	-	0.0%	-	0.0%	-	0.0%	-	-	-	-	-	0.0%
YTD:	-	0.0%	-	0.0%	-	0.0%	-	0.0%	-	0.0%	-	-	-	-	-	0.0%
Single Family	-	0.0%	-	0.0%	-	0.0%	-	0.0%	-	0.0%	-	-	-	-	-	0.0%
YTD:	-	0.0%	-	0.0%	-	0.0%	-	0.0%	-	0.0%	-	-	-	-	-	0.0%
Townhouse	-	0.0%	-	0.0%	-	0.0%	-	0.0%	-	0.0%	-	-	-	-	-	0.0%
YTD:	-	0.0%	-	0.0%	-	0.0%	-	0.0%	-	0.0%	-	-	-	-	-	0.0%
Condominium	-	0.0%	-	0.0%	-	0.0%	-	0.0%	-	0.0%	-	-	-	-	-	0.0%
YTD:	-	0.0%	-	0.0%	-	0.0%	-	0.0%	-	0.0%	-	-	-	-	-	0.0%

* Local Market Area Code: 1014; Type: Census Place Group
 ** Closed Sale counts for most recent 3 months are Preliminary.

Market Analysis By Local Market Area*: Buffalo Springs

Property Type	Closed Sales**	YoY%	Dollar Volume	YoY%	Average Price	YoY%	Median Price	YoY%	Price/Sqft	YoY%	DOM	New Listings	Active Listings	Pending Sales	Months Inventory	Close To OLP
All(New and Existing)																
Residential (SF/COND/TH)	-	-100.0%	-	-100.0%	-	-100.0%	-	-100.0%	-	-100.0%	-	2	1	2	1.7	0.0%
YTD:	-	-100.0%	-	-100.0%	-	-100.0%	-	-100.0%	-	-100.0%	-	2	1	2		0.0%
Single Family	-	-100.0%	-	-100.0%	-	-100.0%	-	-100.0%	-	-100.0%	-	2	1	2	1.7	0.0%
YTD:	-	-100.0%	-	-100.0%	-	-100.0%	-	-100.0%	-	-100.0%	-	2	1	2		0.0%
Townhouse	-	0.0%	-	0.0%	-	0.0%	-	0.0%	-	0.0%	-	-	-	-	-	0.0%
YTD:	-	0.0%	-	0.0%	-	0.0%	-	0.0%	-	0.0%	-	-	-	-	-	0.0%
Condominium	-	0.0%	-	0.0%	-	0.0%	-	0.0%	-	0.0%	-	-	-	-	-	0.0%
YTD:	-	0.0%	-	0.0%	-	0.0%	-	0.0%	-	0.0%	-	-	-	-	-	0.0%
Existing Home																
Residential (SF/COND/TH)	-	-100.0%	-	-100.0%	-	-100.0%	-	-100.0%	-	-100.0%	-	2	1	2	1.7	0.0%
YTD:	-	-100.0%	-	-100.0%	-	-100.0%	-	-100.0%	-	-100.0%	-	2	1	2		0.0%
Single Family	-	-100.0%	-	-100.0%	-	-100.0%	-	-100.0%	-	-100.0%	-	2	1	2	1.7	0.0%
YTD:	-	-100.0%	-	-100.0%	-	-100.0%	-	-100.0%	-	-100.0%	-	2	1	2		0.0%
Townhouse	-	0.0%	-	0.0%	-	0.0%	-	0.0%	-	0.0%	-	-	-	-	-	0.0%
YTD:	-	0.0%	-	0.0%	-	0.0%	-	0.0%	-	0.0%	-	-	-	-	-	0.0%
Condominium	-	0.0%	-	0.0%	-	0.0%	-	0.0%	-	0.0%	-	-	-	-	-	0.0%
YTD:	-	0.0%	-	0.0%	-	0.0%	-	0.0%	-	0.0%	-	-	-	-	-	0.0%
New Construction																
Residential (SF/COND/TH)	-	0.0%	-	0.0%	-	0.0%	-	0.0%	-	0.0%	-	-	-	-	-	0.0%
YTD:	-	0.0%	-	0.0%	-	0.0%	-	0.0%	-	0.0%	-	-	-	-	-	0.0%
Single Family	-	0.0%	-	0.0%	-	0.0%	-	0.0%	-	0.0%	-	-	-	-	-	0.0%
YTD:	-	0.0%	-	0.0%	-	0.0%	-	0.0%	-	0.0%	-	-	-	-	-	0.0%
Townhouse	-	0.0%	-	0.0%	-	0.0%	-	0.0%	-	0.0%	-	-	-	-	-	0.0%
YTD:	-	0.0%	-	0.0%	-	0.0%	-	0.0%	-	0.0%	-	-	-	-	-	0.0%
Condominium	-	0.0%	-	0.0%	-	0.0%	-	0.0%	-	0.0%	-	-	-	-	-	0.0%
YTD:	-	0.0%	-	0.0%	-	0.0%	-	0.0%	-	0.0%	-	-	-	-	-	0.0%

* Local Market Area Code: 135; Type: Census Place Group
 ** Closed Sale counts for most recent 3 months are Preliminary.

Market Analysis By Local Market Area*: Idalou

Property Type	Closed Sales**	YoY%	Dollar Volume	YoY%	Average Price	YoY%	Median Price	YoY%	Price/Sqft	YoY%	DOM	New Listings	Active Listings	Pending Sales	Months Inventory	Close To OLP
All(New and Existing)																
Residential (SF/COND/TH)	1	100.0%	\$195,000	100.0%	\$195,000	100.0%	\$195,000	100.0%	\$121	100.0%	83	5	7	1	6.0	92.9%
YTD:	1	100.0%	\$195,000	100.0%	\$195,000	100.0%	\$195,000	100.0%	\$121	100.0%	83	5	7	1		92.9%
Single Family	1	100.0%	\$195,000	100.0%	\$195,000	100.0%	\$195,000	100.0%	\$121	100.0%	83	5	7	1	6.0	92.9%
YTD:	1	100.0%	\$195,000	100.0%	\$195,000	100.0%	\$195,000	100.0%	\$121	100.0%	83	5	7	1		92.9%
Townhouse	-	0.0%	-	0.0%	-	0.0%	-	0.0%	-	0.0%	-	-	-	-	-	0.0%
YTD:	-	0.0%	-	0.0%	-	0.0%	-	0.0%	-	0.0%	-	-	-	-	-	0.0%
Condominium	-	0.0%	-	0.0%	-	0.0%	-	0.0%	-	0.0%	-	-	-	-	-	0.0%
YTD:	-	0.0%	-	0.0%	-	0.0%	-	0.0%	-	0.0%	-	-	-	-	-	0.0%
Existing Home																
Residential (SF/COND/TH)	1	100.0%	\$195,000	100.0%	\$195,000	100.0%	\$195,000	100.0%	\$121	100.0%	83	5	7	1	6.5	92.9%
YTD:	1	100.0%	\$195,000	100.0%	\$195,000	100.0%	\$195,000	100.0%	\$121	100.0%	83	5	7	1		92.9%
Single Family	1	100.0%	\$195,000	100.0%	\$195,000	100.0%	\$195,000	100.0%	\$121	100.0%	83	5	7	1	6.5	92.9%
YTD:	1	100.0%	\$195,000	100.0%	\$195,000	100.0%	\$195,000	100.0%	\$121	100.0%	83	5	7	1		92.9%
Townhouse	-	0.0%	-	0.0%	-	0.0%	-	0.0%	-	0.0%	-	-	-	-	-	0.0%
YTD:	-	0.0%	-	0.0%	-	0.0%	-	0.0%	-	0.0%	-	-	-	-	-	0.0%
Condominium	-	0.0%	-	0.0%	-	0.0%	-	0.0%	-	0.0%	-	-	-	-	-	0.0%
YTD:	-	0.0%	-	0.0%	-	0.0%	-	0.0%	-	0.0%	-	-	-	-	-	0.0%
New Construction																
Residential (SF/COND/TH)	-	0.0%	-	0.0%	-	0.0%	-	0.0%	-	0.0%	-	-	-	-	-	0.0%
YTD:	-	0.0%	-	0.0%	-	0.0%	-	0.0%	-	0.0%	-	-	-	-	-	0.0%
Single Family	-	0.0%	-	0.0%	-	0.0%	-	0.0%	-	0.0%	-	-	-	-	-	0.0%
YTD:	-	0.0%	-	0.0%	-	0.0%	-	0.0%	-	0.0%	-	-	-	-	-	0.0%
Townhouse	-	0.0%	-	0.0%	-	0.0%	-	0.0%	-	0.0%	-	-	-	-	-	0.0%
YTD:	-	0.0%	-	0.0%	-	0.0%	-	0.0%	-	0.0%	-	-	-	-	-	0.0%
Condominium	-	0.0%	-	0.0%	-	0.0%	-	0.0%	-	0.0%	-	-	-	-	-	0.0%
YTD:	-	0.0%	-	0.0%	-	0.0%	-	0.0%	-	0.0%	-	-	-	-	-	0.0%

* Local Market Area Code: 456; Type: Census Place Group
 ** Closed Sale counts for most recent 3 months are Preliminary.

Market Analysis By Local Market Area*: Levelland

Property Type	Closed Sales**	YoY%	Dollar Volume	YoY%	Average Price	YoY%	Median Price	YoY%	Price/Sqft	YoY%	DOM	New Listings	Active Listings	Pending Sales	Months Inventory	Close To OLP
All(New and Existing)																
Residential (SF/COND/TH)	8	60.0%	\$1,638,400	75.8%	\$204,800	9.9%	\$211,000	11.1%	\$94	11.5%	106	18	48	7	4.7	89.7%
YTD:	8	60.0%	\$1,638,400	75.8%	\$204,800	9.9%	\$211,000	11.1%	\$94	11.5%	106	18	48	7		89.7%
Single Family	8	60.0%	\$1,638,400	75.8%	\$204,800	9.9%	\$211,000	11.1%	\$94	11.5%	106	18	47	7	4.6	89.7%
YTD:	8	60.0%	\$1,638,400	75.8%	\$204,800	9.9%	\$211,000	11.1%	\$94	11.5%	106	18	47	7		89.7%
Townhouse	-	0.0%	-	0.0%	-	0.0%	-	0.0%	-	0.0%	-	-	-	-	-	0.0%
YTD:	-	0.0%	-	0.0%	-	0.0%	-	0.0%	-	0.0%	-	-	-	-	-	0.0%
Condominium	-	0.0%	-	0.0%	-	0.0%	-	0.0%	-	0.0%	-	-	1	-	-	0.0%
YTD:	-	0.0%	-	0.0%	-	0.0%	-	0.0%	-	0.0%	-	-	1	-	-	0.0%
Existing Home																
Residential (SF/COND/TH)	8	60.0%	\$1,638,400	75.8%	\$204,800	9.9%	\$211,000	11.1%	\$94	11.5%	106	18	47	7	4.6	89.7%
YTD:	8	60.0%	\$1,638,400	75.8%	\$204,800	9.9%	\$211,000	11.1%	\$94	11.5%	106	18	47	7		89.7%
Single Family	8	60.0%	\$1,638,400	75.8%	\$204,800	9.9%	\$211,000	11.1%	\$94	11.5%	106	18	46	7	4.5	89.7%
YTD:	8	60.0%	\$1,638,400	75.8%	\$204,800	9.9%	\$211,000	11.1%	\$94	11.5%	106	18	46	7		89.7%
Townhouse	-	0.0%	-	0.0%	-	0.0%	-	0.0%	-	0.0%	-	-	-	-	-	0.0%
YTD:	-	0.0%	-	0.0%	-	0.0%	-	0.0%	-	0.0%	-	-	-	-	-	0.0%
Condominium	-	0.0%	-	0.0%	-	0.0%	-	0.0%	-	0.0%	-	-	1	-	-	0.0%
YTD:	-	0.0%	-	0.0%	-	0.0%	-	0.0%	-	0.0%	-	-	1	-	-	0.0%
New Construction																
Residential (SF/COND/TH)	-	0.0%	-	0.0%	-	0.0%	-	0.0%	-	0.0%	-	-	1	-	-	0.0%
YTD:	-	0.0%	-	0.0%	-	0.0%	-	0.0%	-	0.0%	-	-	1	-	-	0.0%
Single Family	-	0.0%	-	0.0%	-	0.0%	-	0.0%	-	0.0%	-	-	1	-	-	0.0%
YTD:	-	0.0%	-	0.0%	-	0.0%	-	0.0%	-	0.0%	-	-	1	-	-	0.0%
Townhouse	-	0.0%	-	0.0%	-	0.0%	-	0.0%	-	0.0%	-	-	-	-	-	0.0%
YTD:	-	0.0%	-	0.0%	-	0.0%	-	0.0%	-	0.0%	-	-	-	-	-	0.0%
Condominium	-	0.0%	-	0.0%	-	0.0%	-	0.0%	-	0.0%	-	-	-	-	-	0.0%
YTD:	-	0.0%	-	0.0%	-	0.0%	-	0.0%	-	0.0%	-	-	-	-	-	0.0%

* Local Market Area Code: 220; Type: Census Place Group
 ** Closed Sale counts for most recent 3 months are Preliminary.

Market Analysis By Local Market Area*: Lubbock

Property Type	Closed Sales**	YoY%	Dollar Volume	YoY%	Average Price	YoY%	Median Price	YoY%	Price/Sqft	YoY%	DOM	New Listings	Active Listings	Pending Sales	Months Inventory	Close To OLP
All(New and Existing)																
Residential (SF/COND/TH)	174	-13.4%	\$42,538,368	-23.0%	\$244,473	-11.0%	\$219,800	-12.1%	\$121	-6.8%	54	491	845	279	3.1	93.8%
YTD:	174	-13.4%	\$42,538,368	-23.0%	\$244,473	-11.0%	\$219,800	-12.1%	\$121	-6.8%	54	491	845	279		93.8%
Single Family	172	-10.9%	\$42,265,414	-21.0%	\$245,729	-11.4%	\$222,800	-12.2%	\$121	-6.5%	54	478	797	271	3.0	93.8%
YTD:	172	-10.9%	\$42,265,414	-21.0%	\$245,729	-11.4%	\$222,800	-12.2%	\$121	-6.5%	54	478	797	271		93.8%
Townhouse	1	-85.7%	\$203,000	-86.3%	\$203,000	-4.0%	\$203,000	-3.3%	\$125	-6.1%	39	7	41	4	6.3	97.1%
YTD:	1	-85.7%	\$203,000	-86.3%	\$203,000	-4.0%	\$203,000	-3.3%	\$125	-6.1%	39	7	41	4		97.1%
Condominium	1	0.0%	\$80,000	-63.6%	\$80,000	-63.6%	\$80,000	-63.6%	\$117	-32.9%	33	6	7	4	4.4	88.9%
YTD:	1	0.0%	\$80,000	-63.6%	\$80,000	-63.6%	\$80,000	-63.6%	\$117	-32.9%	33	6	7	4		88.9%
Existing Home																
Residential (SF/COND/TH)	157	-9.3%	\$36,161,204	-19.2%	\$230,326	-10.9%	\$209,625	-4.7%	\$117	-7.0%	51	400	683	220	2.9	93.4%
YTD:	157	-9.3%	\$36,161,204	-19.2%	\$230,326	-10.9%	\$209,625	-4.7%	\$117	-7.0%	51	400	683	220		93.4%
Single Family	155	-6.1%	\$35,886,606	-16.6%	\$231,526	-11.2%	\$210,000	-4.6%	\$117	-6.5%	52	393	661	215	2.8	93.4%
YTD:	155	-6.1%	\$35,886,606	-16.6%	\$231,526	-11.2%	\$210,000	-4.6%	\$117	-6.5%	52	393	661	215		93.4%
Townhouse	1	-85.7%	\$203,000	-86.3%	\$203,000	-4.0%	\$203,000	-3.3%	\$125	-6.1%	39	1	16	1	4.9	97.1%
YTD:	1	-85.7%	\$203,000	-86.3%	\$203,000	-4.0%	\$203,000	-3.3%	\$125	-6.1%	39	1	16	1		97.1%
Condominium	1	0.0%	\$80,000	-63.6%	\$80,000	-63.6%	\$80,000	-63.6%	\$117	-32.9%	33	6	6	4	3.8	88.9%
YTD:	1	0.0%	\$80,000	-63.6%	\$80,000	-63.6%	\$80,000	-63.6%	\$117	-32.9%	33	6	6	4		88.9%
New Construction																
Residential (SF/COND/TH)	17	-39.3%	\$6,410,764	-38.8%	\$377,104	0.8%	\$294,995	-14.2%	\$166	3.6%	77	91	162	59	4.2	97.8%
YTD:	17	-39.3%	\$6,410,764	-38.8%	\$377,104	0.8%	\$294,995	-14.2%	\$166	3.6%	77	91	162	59		97.8%
Single Family	17	-39.3%	\$6,410,764	-38.8%	\$377,104	0.8%	\$294,995	-14.2%	\$166	3.6%	77	85	136	56	3.9	97.8%
YTD:	17	-39.3%	\$6,410,764	-38.8%	\$377,104	0.8%	\$294,995	-14.2%	\$166	3.6%	77	85	136	56		97.8%
Townhouse	-	0.0%	-	0.0%	-	0.0%	-	0.0%	-	0.0%	-	6	25	3	7.7	0.0%
YTD:	-	0.0%	-	0.0%	-	0.0%	-	0.0%	-	0.0%	-	6	25	3		0.0%
Condominium	-	0.0%	-	0.0%	-	0.0%	-	0.0%	-	0.0%	-	-	1	-	-	0.0%
YTD:	-	0.0%	-	0.0%	-	0.0%	-	0.0%	-	0.0%	-	-	1	-		0.0%

* Local Market Area Code: 596; Type: Census Place Group
 ** Closed Sale counts for most recent 3 months are Preliminary.

Market Analysis By Local Market Area*: New Deal

Property Type	Closed Sales**	YoY%	Dollar Volume	YoY%	Average Price	YoY%	Median Price	YoY%	Price/Sqft	YoY%	DOM	New Listings	Active Listings	Pending Sales	Months Inventory	Close To OLP
All(New and Existing)																
Residential (SF/COND/TH)	-	0.0%	-	0.0%	-	0.0%	-	0.0%	-	0.0%	-	3	4	-	9.6	0.0%
YTD:	-	0.0%	-	0.0%	-	0.0%	-	0.0%	-	0.0%	-	3	4	-		0.0%
Single Family	-	0.0%	-	0.0%	-	0.0%	-	0.0%	-	0.0%	-	3	4	-	9.6	0.0%
YTD:	-	0.0%	-	0.0%	-	0.0%	-	0.0%	-	0.0%	-	3	4	-		0.0%
Townhouse	-	0.0%	-	0.0%	-	0.0%	-	0.0%	-	0.0%	-	-	-	-	-	0.0%
YTD:	-	0.0%	-	0.0%	-	0.0%	-	0.0%	-	0.0%	-	-	-	-	-	0.0%
Condominium	-	0.0%	-	0.0%	-	0.0%	-	0.0%	-	0.0%	-	-	-	-	-	0.0%
YTD:	-	0.0%	-	0.0%	-	0.0%	-	0.0%	-	0.0%	-	-	-	-	-	0.0%
Existing Home																
Residential (SF/COND/TH)	-	0.0%	-	0.0%	-	0.0%	-	0.0%	-	0.0%	-	2	3	-	7.2	0.0%
YTD:	-	0.0%	-	0.0%	-	0.0%	-	0.0%	-	0.0%	-	2	3	-		0.0%
Single Family	-	0.0%	-	0.0%	-	0.0%	-	0.0%	-	0.0%	-	2	3	-	7.2	0.0%
YTD:	-	0.0%	-	0.0%	-	0.0%	-	0.0%	-	0.0%	-	2	3	-		0.0%
Townhouse	-	0.0%	-	0.0%	-	0.0%	-	0.0%	-	0.0%	-	-	-	-	-	0.0%
YTD:	-	0.0%	-	0.0%	-	0.0%	-	0.0%	-	0.0%	-	-	-	-	-	0.0%
Condominium	-	0.0%	-	0.0%	-	0.0%	-	0.0%	-	0.0%	-	-	-	-	-	0.0%
YTD:	-	0.0%	-	0.0%	-	0.0%	-	0.0%	-	0.0%	-	-	-	-	-	0.0%
New Construction																
Residential (SF/COND/TH)	-	0.0%	-	0.0%	-	0.0%	-	0.0%	-	0.0%	-	1	1	-	-	0.0%
YTD:	-	0.0%	-	0.0%	-	0.0%	-	0.0%	-	0.0%	-	1	1	-		0.0%
Single Family	-	0.0%	-	0.0%	-	0.0%	-	0.0%	-	0.0%	-	1	1	-	-	0.0%
YTD:	-	0.0%	-	0.0%	-	0.0%	-	0.0%	-	0.0%	-	1	1	-		0.0%
Townhouse	-	0.0%	-	0.0%	-	0.0%	-	0.0%	-	0.0%	-	-	-	-	-	0.0%
YTD:	-	0.0%	-	0.0%	-	0.0%	-	0.0%	-	0.0%	-	-	-	-	-	0.0%
Condominium	-	0.0%	-	0.0%	-	0.0%	-	0.0%	-	0.0%	-	-	-	-	-	0.0%
YTD:	-	0.0%	-	0.0%	-	0.0%	-	0.0%	-	0.0%	-	-	-	-	-	0.0%

* Local Market Area Code: 700; Type: Census Place Group
 ** Closed Sale counts for most recent 3 months are Preliminary.

Market Analysis By Local Market Area*: Ransom Canyon

Property Type	Closed Sales**	YoY%	Dollar Volume	YoY%	Average Price	YoY%	Median Price	YoY%	Price/Sqft	YoY%	DOM	New Listings	Active Listings	Pending Sales	Months Inventory	Close To OLP
All(New and Existing)																
Residential (SF/COND/TH)	1	100.0%	\$112,000	100.0%	\$112,000	100.0%	\$112,000	100.0%	\$75	100.0%	208	3	10	3	5.2	106.8%
YTD:	1	100.0%	\$112,000	100.0%	\$112,000	100.0%	\$112,000	100.0%	\$75	100.0%	208	3	10	3		106.8%
Single Family	1	100.0%	\$112,000	100.0%	\$112,000	100.0%	\$112,000	100.0%	\$75	100.0%	208	3	10	3	5.2	106.8%
YTD:	1	100.0%	\$112,000	100.0%	\$112,000	100.0%	\$112,000	100.0%	\$75	100.0%	208	3	10	3		106.8%
Townhouse	-	0.0%	-	0.0%	-	0.0%	-	0.0%	-	0.0%	-	-	-	-	-	0.0%
YTD:	-	0.0%	-	0.0%	-	0.0%	-	0.0%	-	0.0%	-	-	-	-	-	0.0%
Condominium	-	0.0%	-	0.0%	-	0.0%	-	0.0%	-	0.0%	-	-	-	-	-	0.0%
YTD:	-	0.0%	-	0.0%	-	0.0%	-	0.0%	-	0.0%	-	-	-	-	-	0.0%
Existing Home																
Residential (SF/COND/TH)	1	100.0%	\$112,000	100.0%	\$112,000	100.0%	\$112,000	100.0%	\$75	100.0%	208	2	9	3	4.9	106.8%
YTD:	1	100.0%	\$112,000	100.0%	\$112,000	100.0%	\$112,000	100.0%	\$75	100.0%	208	2	9	3		106.8%
Single Family	1	100.0%	\$112,000	100.0%	\$112,000	100.0%	\$112,000	100.0%	\$75	100.0%	208	2	9	3	4.9	106.8%
YTD:	1	100.0%	\$112,000	100.0%	\$112,000	100.0%	\$112,000	100.0%	\$75	100.0%	208	2	9	3		106.8%
Townhouse	-	0.0%	-	0.0%	-	0.0%	-	0.0%	-	0.0%	-	-	-	-	-	0.0%
YTD:	-	0.0%	-	0.0%	-	0.0%	-	0.0%	-	0.0%	-	-	-	-	-	0.0%
Condominium	-	0.0%	-	0.0%	-	0.0%	-	0.0%	-	0.0%	-	-	-	-	-	0.0%
YTD:	-	0.0%	-	0.0%	-	0.0%	-	0.0%	-	0.0%	-	-	-	-	-	0.0%
New Construction																
Residential (SF/COND/TH)	-	0.0%	-	0.0%	-	0.0%	-	0.0%	-	0.0%	-	1	1	-	12.0	0.0%
YTD:	-	0.0%	-	0.0%	-	0.0%	-	0.0%	-	0.0%	-	1	1	-		0.0%
Single Family	-	0.0%	-	0.0%	-	0.0%	-	0.0%	-	0.0%	-	1	1	-	12.0	0.0%
YTD:	-	0.0%	-	0.0%	-	0.0%	-	0.0%	-	0.0%	-	1	1	-		0.0%
Townhouse	-	0.0%	-	0.0%	-	0.0%	-	0.0%	-	0.0%	-	-	-	-	-	0.0%
YTD:	-	0.0%	-	0.0%	-	0.0%	-	0.0%	-	0.0%	-	-	-	-	-	0.0%
Condominium	-	0.0%	-	0.0%	-	0.0%	-	0.0%	-	0.0%	-	-	-	-	-	0.0%
YTD:	-	0.0%	-	0.0%	-	0.0%	-	0.0%	-	0.0%	-	-	-	-	-	0.0%

* Local Market Area Code: 826; Type: Census Place Group
 ** Closed Sale counts for most recent 3 months are Preliminary.

Market Analysis By Local Market Area*: Ropesville

Property Type	Closed Sales**	YoY%	Dollar Volume	YoY%	Average Price	YoY%	Median Price	YoY%	Price/Sqft	YoY%	DOM	New Listings	Active Listings	Pending Sales	Months Inventory	Close To OLP
All(New and Existing)																
Residential (SF/COND/TH)	-	0.0%	-	0.0%	-	0.0%	-	0.0%	-	0.0%	-	-	-	-	-	0.0%
YTD:	-	0.0%	-	0.0%	-	0.0%	-	0.0%	-	0.0%	-	-	-	-	-	0.0%
Single Family	-	0.0%	-	0.0%	-	0.0%	-	0.0%	-	0.0%	-	-	-	-	-	0.0%
YTD:	-	0.0%	-	0.0%	-	0.0%	-	0.0%	-	0.0%	-	-	-	-	-	0.0%
Townhouse	-	0.0%	-	0.0%	-	0.0%	-	0.0%	-	0.0%	-	-	-	-	-	0.0%
YTD:	-	0.0%	-	0.0%	-	0.0%	-	0.0%	-	0.0%	-	-	-	-	-	0.0%
Condominium	-	0.0%	-	0.0%	-	0.0%	-	0.0%	-	0.0%	-	-	-	-	-	0.0%
YTD:	-	0.0%	-	0.0%	-	0.0%	-	0.0%	-	0.0%	-	-	-	-	-	0.0%
Existing Home																
Residential (SF/COND/TH)	-	0.0%	-	0.0%	-	0.0%	-	0.0%	-	0.0%	-	-	-	-	-	0.0%
YTD:	-	0.0%	-	0.0%	-	0.0%	-	0.0%	-	0.0%	-	-	-	-	-	0.0%
Single Family	-	0.0%	-	0.0%	-	0.0%	-	0.0%	-	0.0%	-	-	-	-	-	0.0%
YTD:	-	0.0%	-	0.0%	-	0.0%	-	0.0%	-	0.0%	-	-	-	-	-	0.0%
Townhouse	-	0.0%	-	0.0%	-	0.0%	-	0.0%	-	0.0%	-	-	-	-	-	0.0%
YTD:	-	0.0%	-	0.0%	-	0.0%	-	0.0%	-	0.0%	-	-	-	-	-	0.0%
Condominium	-	0.0%	-	0.0%	-	0.0%	-	0.0%	-	0.0%	-	-	-	-	-	0.0%
YTD:	-	0.0%	-	0.0%	-	0.0%	-	0.0%	-	0.0%	-	-	-	-	-	0.0%
New Construction																
Residential (SF/COND/TH)	-	0.0%	-	0.0%	-	0.0%	-	0.0%	-	0.0%	-	-	-	-	-	0.0%
YTD:	-	0.0%	-	0.0%	-	0.0%	-	0.0%	-	0.0%	-	-	-	-	-	0.0%
Single Family	-	0.0%	-	0.0%	-	0.0%	-	0.0%	-	0.0%	-	-	-	-	-	0.0%
YTD:	-	0.0%	-	0.0%	-	0.0%	-	0.0%	-	0.0%	-	-	-	-	-	0.0%
Townhouse	-	0.0%	-	0.0%	-	0.0%	-	0.0%	-	0.0%	-	-	-	-	-	0.0%
YTD:	-	0.0%	-	0.0%	-	0.0%	-	0.0%	-	0.0%	-	-	-	-	-	0.0%
Condominium	-	0.0%	-	0.0%	-	0.0%	-	0.0%	-	0.0%	-	-	-	-	-	0.0%
YTD:	-	0.0%	-	0.0%	-	0.0%	-	0.0%	-	0.0%	-	-	-	-	-	0.0%

* Local Market Area Code: 222; Type: Census Place Group
 ** Closed Sale counts for most recent 3 months are Preliminary.

Market Analysis By Local Market Area*: Shallowater

Property Type	Closed Sales**	YoY%	Dollar Volume	YoY%	Average Price	YoY%	Median Price	YoY%	Price/Sqft	YoY%	DOM	New Listings	Active Listings	Pending Sales	Months Inventory	Close To OLP
All(New and Existing)																
Residential (SF/COND/TH)	-	-100.0%	-	-100.0%	-	-100.0%	-	-100.0%	-	-100.0%	-	4	12	5	5.5	0.0%
YTD:	-	-100.0%	-	-100.0%	-	-100.0%	-	-100.0%	-	-100.0%	-	4	12	5		0.0%
Single Family	-	-100.0%	-	-100.0%	-	-100.0%	-	-100.0%	-	-100.0%	-	4	12	5	5.5	0.0%
YTD:	-	-100.0%	-	-100.0%	-	-100.0%	-	-100.0%	-	-100.0%	-	4	12	5		0.0%
Townhouse	-	0.0%	-	0.0%	-	0.0%	-	0.0%	-	0.0%	-	-	-	-	-	0.0%
YTD:	-	0.0%	-	0.0%	-	0.0%	-	0.0%	-	0.0%	-	-	-	-	-	0.0%
Condominium	-	0.0%	-	0.0%	-	0.0%	-	0.0%	-	0.0%	-	-	-	-	-	0.0%
YTD:	-	0.0%	-	0.0%	-	0.0%	-	0.0%	-	0.0%	-	-	-	-	-	0.0%
Existing Home																
Residential (SF/COND/TH)	-	-100.0%	-	-100.0%	-	-100.0%	-	-100.0%	-	-100.0%	-	4	7	5	4.2	0.0%
YTD:	-	-100.0%	-	-100.0%	-	-100.0%	-	-100.0%	-	-100.0%	-	4	7	5		0.0%
Single Family	-	-100.0%	-	-100.0%	-	-100.0%	-	-100.0%	-	-100.0%	-	4	7	5	4.2	0.0%
YTD:	-	-100.0%	-	-100.0%	-	-100.0%	-	-100.0%	-	-100.0%	-	4	7	5		0.0%
Townhouse	-	0.0%	-	0.0%	-	0.0%	-	0.0%	-	0.0%	-	-	-	-	-	0.0%
YTD:	-	0.0%	-	0.0%	-	0.0%	-	0.0%	-	0.0%	-	-	-	-	-	0.0%
Condominium	-	0.0%	-	0.0%	-	0.0%	-	0.0%	-	0.0%	-	-	-	-	-	0.0%
YTD:	-	0.0%	-	0.0%	-	0.0%	-	0.0%	-	0.0%	-	-	-	-	-	0.0%
New Construction																
Residential (SF/COND/TH)	-	0.0%	-	0.0%	-	0.0%	-	0.0%	-	0.0%	-	-	5	-	10.0	0.0%
YTD:	-	0.0%	-	0.0%	-	0.0%	-	0.0%	-	0.0%	-	-	5	-		0.0%
Single Family	-	0.0%	-	0.0%	-	0.0%	-	0.0%	-	0.0%	-	-	5	-	10.0	0.0%
YTD:	-	0.0%	-	0.0%	-	0.0%	-	0.0%	-	0.0%	-	-	5	-		0.0%
Townhouse	-	0.0%	-	0.0%	-	0.0%	-	0.0%	-	0.0%	-	-	-	-	-	0.0%
YTD:	-	0.0%	-	0.0%	-	0.0%	-	0.0%	-	0.0%	-	-	-	-	-	0.0%
Condominium	-	0.0%	-	0.0%	-	0.0%	-	0.0%	-	0.0%	-	-	-	-	-	0.0%
YTD:	-	0.0%	-	0.0%	-	0.0%	-	0.0%	-	0.0%	-	-	-	-	-	0.0%

* Local Market Area Code: 925; Type: Census Place Group
 ** Closed Sale counts for most recent 3 months are Preliminary.

Market Analysis By Local Market Area*: Slaton

Property Type	Closed Sales**	YoY%	Dollar Volume	YoY%	Average Price	YoY%	Median Price	YoY%	Price/Sqft	YoY%	DOM	New Listings	Active Listings	Pending Sales	Months Inventory	Close To OLP
All(New and Existing)																
Residential (SF/COND/TH)	6	50.0%	\$566,000	21.6%	\$94,333	-18.9%	\$111,000	9.7%	\$67	6.1%	36	6	15	7	3.4	87.8%
YTD:	6	50.0%	\$566,000	21.6%	\$94,333	-18.9%	\$111,000	9.7%	\$67	6.1%	36	6	15	7		87.8%
Single Family	6	50.0%	\$566,000	21.6%	\$94,333	-18.9%	\$111,000	9.7%	\$67	6.1%	36	6	15	7	3.4	87.8%
YTD:	6	50.0%	\$566,000	21.6%	\$94,333	-18.9%	\$111,000	9.7%	\$67	6.1%	36	6	15	7		87.8%
Townhouse	-	0.0%	-	0.0%	-	0.0%	-	0.0%	-	0.0%	-	-	-	-	-	0.0%
YTD:	-	0.0%	-	0.0%	-	0.0%	-	0.0%	-	0.0%	-	-	-	-	-	0.0%
Condominium	-	0.0%	-	0.0%	-	0.0%	-	0.0%	-	0.0%	-	-	-	-	-	0.0%
YTD:	-	0.0%	-	0.0%	-	0.0%	-	0.0%	-	0.0%	-	-	-	-	-	0.0%
Existing Home																
Residential (SF/COND/TH)	6	50.0%	\$566,000	21.6%	\$94,333	-18.9%	\$111,000	9.7%	\$67	6.1%	36	6	15	7	3.4	87.8%
YTD:	6	50.0%	\$566,000	21.6%	\$94,333	-18.9%	\$111,000	9.7%	\$67	6.1%	36	6	15	7		87.8%
Single Family	6	50.0%	\$566,000	21.6%	\$94,333	-18.9%	\$111,000	9.7%	\$67	6.1%	36	6	15	7	3.4	87.8%
YTD:	6	50.0%	\$566,000	21.6%	\$94,333	-18.9%	\$111,000	9.7%	\$67	6.1%	36	6	15	7		87.8%
Townhouse	-	0.0%	-	0.0%	-	0.0%	-	0.0%	-	0.0%	-	-	-	-	-	0.0%
YTD:	-	0.0%	-	0.0%	-	0.0%	-	0.0%	-	0.0%	-	-	-	-	-	0.0%
Condominium	-	0.0%	-	0.0%	-	0.0%	-	0.0%	-	0.0%	-	-	-	-	-	0.0%
YTD:	-	0.0%	-	0.0%	-	0.0%	-	0.0%	-	0.0%	-	-	-	-	-	0.0%
New Construction																
Residential (SF/COND/TH)	-	0.0%	-	0.0%	-	0.0%	-	0.0%	-	0.0%	-	-	-	-	-	0.0%
YTD:	-	0.0%	-	0.0%	-	0.0%	-	0.0%	-	0.0%	-	-	-	-	-	0.0%
Single Family	-	0.0%	-	0.0%	-	0.0%	-	0.0%	-	0.0%	-	-	-	-	-	0.0%
YTD:	-	0.0%	-	0.0%	-	0.0%	-	0.0%	-	0.0%	-	-	-	-	-	0.0%
Townhouse	-	0.0%	-	0.0%	-	0.0%	-	0.0%	-	0.0%	-	-	-	-	-	0.0%
YTD:	-	0.0%	-	0.0%	-	0.0%	-	0.0%	-	0.0%	-	-	-	-	-	0.0%
Condominium	-	0.0%	-	0.0%	-	0.0%	-	0.0%	-	0.0%	-	-	-	-	-	0.0%
YTD:	-	0.0%	-	0.0%	-	0.0%	-	0.0%	-	0.0%	-	-	-	-	-	0.0%

* Local Market Area Code: 935; Type: Census Place Group
 ** Closed Sale counts for most recent 3 months are Preliminary.

Market Analysis By Local Market Area*: Smyer

Property Type	Closed Sales**	YoY%	Dollar Volume	YoY%	Average Price	YoY%	Median Price	YoY%	Price/Sqft	YoY%	DOM	New Listings	Active Listings	Pending Sales	Months Inventory	Close To OLP
All(New and Existing)																
Residential (SF/COND/TH)	-	0.0%	-	0.0%	-	0.0%	-	0.0%	-	0.0%	-	-	1	-	-	0.0%
YTD:	-	0.0%	-	0.0%	-	0.0%	-	0.0%	-	0.0%	-	-	1	-	-	0.0%
Single Family	-	0.0%	-	0.0%	-	0.0%	-	0.0%	-	0.0%	-	-	1	-	-	0.0%
YTD:	-	0.0%	-	0.0%	-	0.0%	-	0.0%	-	0.0%	-	-	1	-	-	0.0%
Townhouse	-	0.0%	-	0.0%	-	0.0%	-	0.0%	-	0.0%	-	-	-	-	-	0.0%
YTD:	-	0.0%	-	0.0%	-	0.0%	-	0.0%	-	0.0%	-	-	-	-	-	0.0%
Condominium	-	0.0%	-	0.0%	-	0.0%	-	0.0%	-	0.0%	-	-	-	-	-	0.0%
YTD:	-	0.0%	-	0.0%	-	0.0%	-	0.0%	-	0.0%	-	-	-	-	-	0.0%
Existing Home																
Residential (SF/COND/TH)	-	0.0%	-	0.0%	-	0.0%	-	0.0%	-	0.0%	-	-	1	-	-	0.0%
YTD:	-	0.0%	-	0.0%	-	0.0%	-	0.0%	-	0.0%	-	-	1	-	-	0.0%
Single Family	-	0.0%	-	0.0%	-	0.0%	-	0.0%	-	0.0%	-	-	1	-	-	0.0%
YTD:	-	0.0%	-	0.0%	-	0.0%	-	0.0%	-	0.0%	-	-	1	-	-	0.0%
Townhouse	-	0.0%	-	0.0%	-	0.0%	-	0.0%	-	0.0%	-	-	-	-	-	0.0%
YTD:	-	0.0%	-	0.0%	-	0.0%	-	0.0%	-	0.0%	-	-	-	-	-	0.0%
Condominium	-	0.0%	-	0.0%	-	0.0%	-	0.0%	-	0.0%	-	-	-	-	-	0.0%
YTD:	-	0.0%	-	0.0%	-	0.0%	-	0.0%	-	0.0%	-	-	-	-	-	0.0%
New Construction																
Residential (SF/COND/TH)	-	0.0%	-	0.0%	-	0.0%	-	0.0%	-	0.0%	-	-	-	-	-	0.0%
YTD:	-	0.0%	-	0.0%	-	0.0%	-	0.0%	-	0.0%	-	-	-	-	-	0.0%
Single Family	-	0.0%	-	0.0%	-	0.0%	-	0.0%	-	0.0%	-	-	-	-	-	0.0%
YTD:	-	0.0%	-	0.0%	-	0.0%	-	0.0%	-	0.0%	-	-	-	-	-	0.0%
Townhouse	-	0.0%	-	0.0%	-	0.0%	-	0.0%	-	0.0%	-	-	-	-	-	0.0%
YTD:	-	0.0%	-	0.0%	-	0.0%	-	0.0%	-	0.0%	-	-	-	-	-	0.0%
Condominium	-	0.0%	-	0.0%	-	0.0%	-	0.0%	-	0.0%	-	-	-	-	-	0.0%
YTD:	-	0.0%	-	0.0%	-	0.0%	-	0.0%	-	0.0%	-	-	-	-	-	0.0%

* Local Market Area Code: 491; Type: Census Place Group
 ** Closed Sale counts for most recent 3 months are Preliminary.

Market Analysis By Local Market Area*: Sundown

Property Type	Closed Sales**	YoY%	Dollar Volume	YoY%	Average Price	YoY%	Median Price	YoY%	Price/Sqft	YoY%	DOM	New Listings	Active Listings	Pending Sales	Months Inventory	Close To OLP
All(New and Existing)																
Residential (SF/COND/TH)	-	0.0%	-	0.0%	-	0.0%	-	0.0%	-	0.0%	-	1	3	1	9.0	0.0%
YTD:	-	0.0%	-	0.0%	-	0.0%	-	0.0%	-	0.0%	-	1	3	1		0.0%
Single Family	-	0.0%	-	0.0%	-	0.0%	-	0.0%	-	0.0%	-	1	3	1	9.0	0.0%
YTD:	-	0.0%	-	0.0%	-	0.0%	-	0.0%	-	0.0%	-	1	3	1		0.0%
Townhouse	-	0.0%	-	0.0%	-	0.0%	-	0.0%	-	0.0%	-	-	-	-	-	0.0%
YTD:	-	0.0%	-	0.0%	-	0.0%	-	0.0%	-	0.0%	-	-	-	-	-	0.0%
Condominium	-	0.0%	-	0.0%	-	0.0%	-	0.0%	-	0.0%	-	-	-	-	-	0.0%
YTD:	-	0.0%	-	0.0%	-	0.0%	-	0.0%	-	0.0%	-	-	-	-	-	0.0%
Existing Home																
Residential (SF/COND/TH)	-	0.0%	-	0.0%	-	0.0%	-	0.0%	-	0.0%	-	1	3	1	9.0	0.0%
YTD:	-	0.0%	-	0.0%	-	0.0%	-	0.0%	-	0.0%	-	1	3	1		0.0%
Single Family	-	0.0%	-	0.0%	-	0.0%	-	0.0%	-	0.0%	-	1	3	1	9.0	0.0%
YTD:	-	0.0%	-	0.0%	-	0.0%	-	0.0%	-	0.0%	-	1	3	1		0.0%
Townhouse	-	0.0%	-	0.0%	-	0.0%	-	0.0%	-	0.0%	-	-	-	-	-	0.0%
YTD:	-	0.0%	-	0.0%	-	0.0%	-	0.0%	-	0.0%	-	-	-	-	-	0.0%
Condominium	-	0.0%	-	0.0%	-	0.0%	-	0.0%	-	0.0%	-	-	-	-	-	0.0%
YTD:	-	0.0%	-	0.0%	-	0.0%	-	0.0%	-	0.0%	-	-	-	-	-	0.0%
New Construction																
Residential (SF/COND/TH)	-	0.0%	-	0.0%	-	0.0%	-	0.0%	-	0.0%	-	-	-	-	-	0.0%
YTD:	-	0.0%	-	0.0%	-	0.0%	-	0.0%	-	0.0%	-	-	-	-	-	0.0%
Single Family	-	0.0%	-	0.0%	-	0.0%	-	0.0%	-	0.0%	-	-	-	-	-	0.0%
YTD:	-	0.0%	-	0.0%	-	0.0%	-	0.0%	-	0.0%	-	-	-	-	-	0.0%
Townhouse	-	0.0%	-	0.0%	-	0.0%	-	0.0%	-	0.0%	-	-	-	-	-	0.0%
YTD:	-	0.0%	-	0.0%	-	0.0%	-	0.0%	-	0.0%	-	-	-	-	-	0.0%
Condominium	-	0.0%	-	0.0%	-	0.0%	-	0.0%	-	0.0%	-	-	-	-	-	0.0%
YTD:	-	0.0%	-	0.0%	-	0.0%	-	0.0%	-	0.0%	-	-	-	-	-	0.0%

* Local Market Area Code: 223; Type: Census Place Group
 ** Closed Sale counts for most recent 3 months are Preliminary.

Market Analysis By Local Market Area*: Wolfforth

Property Type	Closed Sales**	YoY%	Dollar Volume	YoY%	Average Price	YoY%	Median Price	YoY%	Price/Sqft	YoY%	DOM	New Listings	Active Listings	Pending Sales	Months Inventory	Close To OLP
All(New and Existing)																
Residential (SF/COND/TH)	10	-16.7%	\$2,918,489	-15.4%	\$291,849	1.5%	\$265,000	0.3%	\$151	0.8%	35	29	47	15	2.6	96.7%
YTD:	10	-16.7%	\$2,918,489	-15.4%	\$291,849	1.5%	\$265,000	0.3%	\$151	0.8%	35	29	47	15		96.7%
Single Family	10	-16.7%	\$2,918,489	-15.4%	\$291,849	1.5%	\$265,000	0.3%	\$151	0.8%	35	29	47	15	2.6	96.7%
YTD:	10	-16.7%	\$2,918,489	-15.4%	\$291,849	1.5%	\$265,000	0.3%	\$151	0.8%	35	29	47	15		96.7%
Townhouse	-	0.0%	-	0.0%	-	0.0%	-	0.0%	-	0.0%	-	-	-	-	-	0.0%
YTD:	-	0.0%	-	0.0%	-	0.0%	-	0.0%	-	0.0%	-	-	-	-	-	0.0%
Condominium	-	0.0%	-	0.0%	-	0.0%	-	0.0%	-	0.0%	-	-	-	-	-	0.0%
YTD:	-	0.0%	-	0.0%	-	0.0%	-	0.0%	-	0.0%	-	-	-	-	-	0.0%
Existing Home																
Residential (SF/COND/TH)	6	100.0%	\$1,911,500	232.4%	\$318,583	66.2%	\$352,500	84.6%	\$154	16.2%	34	18	25	10	2.5	96.3%
YTD:	6	100.0%	\$1,911,500	232.4%	\$318,583	66.2%	\$352,500	84.6%	\$154	16.2%	34	18	25	10		96.3%
Single Family	6	100.0%	\$1,911,500	232.4%	\$318,583	66.2%	\$352,500	84.6%	\$154	16.2%	34	18	25	10	2.5	96.3%
YTD:	6	100.0%	\$1,911,500	232.4%	\$318,583	66.2%	\$352,500	84.6%	\$154	16.2%	34	18	25	10		96.3%
Townhouse	-	0.0%	-	0.0%	-	0.0%	-	0.0%	-	0.0%	-	-	-	-	-	0.0%
YTD:	-	0.0%	-	0.0%	-	0.0%	-	0.0%	-	0.0%	-	-	-	-	-	0.0%
Condominium	-	0.0%	-	0.0%	-	0.0%	-	0.0%	-	0.0%	-	-	-	-	-	0.0%
YTD:	-	0.0%	-	0.0%	-	0.0%	-	0.0%	-	0.0%	-	-	-	-	-	0.0%
New Construction																
Residential (SF/COND/TH)	3	-66.7%	\$715,140	-75.1%	\$238,380	-25.4%	\$214,790	-23.3%	\$144	-7.2%	38	11	22	5	2.7	97.6%
YTD:	3	-66.7%	\$715,140	-75.1%	\$238,380	-25.4%	\$214,790	-23.3%	\$144	-7.2%	38	11	22	5		97.6%
Single Family	3	-66.7%	\$715,140	-75.1%	\$238,380	-25.4%	\$214,790	-23.3%	\$144	-7.2%	38	11	22	5	2.7	97.6%
YTD:	3	-66.7%	\$715,140	-75.1%	\$238,380	-25.4%	\$214,790	-23.3%	\$144	-7.2%	38	11	22	5		97.6%
Townhouse	-	0.0%	-	0.0%	-	0.0%	-	0.0%	-	0.0%	-	-	-	-	-	0.0%
YTD:	-	0.0%	-	0.0%	-	0.0%	-	0.0%	-	0.0%	-	-	-	-	-	0.0%
Condominium	-	0.0%	-	0.0%	-	0.0%	-	0.0%	-	0.0%	-	-	-	-	-	0.0%
YTD:	-	0.0%	-	0.0%	-	0.0%	-	0.0%	-	0.0%	-	-	-	-	-	0.0%

* Local Market Area Code: 1096; Type: Census Place Group
 ** Closed Sale counts for most recent 3 months are Preliminary.

