

Market Analysis By State: Texas

Property Type	Closed Sales*	YoY%	Dollar Volume	YoY%	Average Price	YoY%	Median Price	YoY%	Price/Sqft	YoY%	DOM	New Listings	Active Listings	Pending Sales	Months Inventory	Close To OLP
All(New and Existing)																
Residential (SF/COND/TH)	22,460	-2.8%	\$9,130,397,552	-1.0%	\$406,518	1.8%	\$330,000	0.0%	\$187	1.1%	54	34,099	102,823	21,316	3.7	94.2%
YTD:	304,373	-11.2%	\$125,922,461,308	-11.4%	\$413,711	-0.2%	\$336,000	-1.2%	\$190	-1.2%	55	456,783	88,945	306,907		95.2%
Single Family	21,121	-2.7%	\$8,668,186,795	-1.2%	\$410,406	1.6%	\$331,499	0.3%	\$184	0.7%	55	31,835	95,657	20,117	3.7	94.2%
YTD:	285,717	-10.8%	\$119,491,791,704	-11.0%	\$418,217	-0.3%	\$339,900	-1.5%	\$187	-1.1%	55	426,145	82,950	288,258		95.1%
Townhouse	575	-5.3%	\$207,578,418	-0.3%	\$361,006	5.2%	\$320,000	0.0%	\$196	3.5%	52	1,008	2,723	514	3.8	95.2%
YTD:	8,028	-14.6%	\$2,837,033,041	-14.7%	\$353,392	-0.1%	\$325,740	0.5%	\$195	1.1%	51	12,670	2,218	8,112		96.1%
Condominium	739	-6.2%	\$246,382,935	1.6%	\$333,400	8.4%	\$250,000	7.1%	\$265	8.7%	53	1,256	4,443	685	4.7	93.9%
YTD:	10,585	-20.9%	\$3,579,387,516	-20.1%	\$338,157	1.0%	\$252,000	2.2%	\$264	-0.2%	49	17,968	3,776	10,537		95.3%
Existing Home																
Residential (SF/COND/TH)	15,989	-9.1%	\$6,402,391,067	-5.4%	\$400,425	4.1%	\$316,000	1.9%	\$186	2.8%	46	25,241	72,095	14,779	3.5	94.1%
YTD:	229,226	-18.7%	\$93,104,207,149	-19.4%	\$406,168	-0.8%	\$324,900	-1.6%	\$188	-1.3%	45	349,175	61,423	230,029		95.3%
Single Family	14,855	-9.4%	\$6,028,630,914	-6.0%	\$405,832	3.9%	\$320,000	1.9%	\$183	2.2%	46	23,385	66,430	13,756	3.5	94.1%
YTD:	213,248	-18.5%	\$87,841,020,795	-19.2%	\$411,920	-0.9%	\$325,000	-3.0%	\$185	-1.2%	45	323,401	56,763	214,188		95.3%
Townhouse	427	-7.2%	\$148,000,394	-1.4%	\$346,605	6.2%	\$305,500	5.3%	\$190	5.1%	40	724	1,753	391	3.2	95.4%
YTD:	6,034	-23.0%	\$2,046,095,135	-24.6%	\$339,094	-2.1%	\$305,000	-1.1%	\$187	-0.6%	41	9,351	1,385	6,062		96.4%
Condominium	686	-5.4%	\$219,039,663	6.0%	\$319,300	12.0%	\$240,000	11.6%	\$259	9.1%	50	1,132	3,912	632	4.4	93.7%
YTD:	9,908	-22.2%	\$3,205,364,236	-21.9%	\$323,513	0.4%	\$243,000	1.9%	\$258	-1.1%	47	16,423	3,273	9,779		95.4%
New Construction																
Residential (SF/COND/TH)	6,468	17.3%	\$2,727,438,309	11.1%	\$421,682	-5.3%	\$355,000	-6.6%	\$189	-4.0%	74	8,858	30,728	6,537	4.5	94.4%
YTD:	75,137	23.5%	\$32,816,532,784	23.2%	\$436,756	-0.3%	\$367,500	-2.2%	\$194	-1.8%	85	107,608	27,522	76,878		94.7%
Single Family	6,264	18.1%	\$2,639,209,982	11.7%	\$421,330	-5.4%	\$354,900	-6.4%	\$187	-4.0%	74	8,450	29,227	6,361	4.4	94.3%
YTD:	72,462	23.6%	\$31,649,817,139	23.4%	\$436,778	-0.2%	\$365,990	-2.4%	\$192	-1.9%	85	102,744	26,186	74,070		94.7%
Townhouse	149	1.4%	\$59,975,479	3.1%	\$402,520	1.8%	\$380,000	-5.5%	\$213	-1.4%	85	284	970	123	5.3	94.7%
YTD:	1,993	28.2%	\$790,586,095	29.7%	\$396,681	1.2%	\$375,796	0.8%	\$218	1.5%	79	3,319	833	2,050		95.3%
Condominium	52	-17.5%	\$26,883,241	-24.6%	\$516,985	-8.7%	\$447,000	-3.9%	\$343	8.7%	85	124	531	53	8.6	96.1%
YTD:	676	4.3%	\$373,474,773	-1.5%	\$552,477	-5.6%	\$472,900	2.6%	\$351	4.1%	89	1,545	502	758		94.5%

* Closed Sale counts for most recent 3 months are Preliminary.

Trend Analysis By State: Texas

Residential, All (New and Existing)



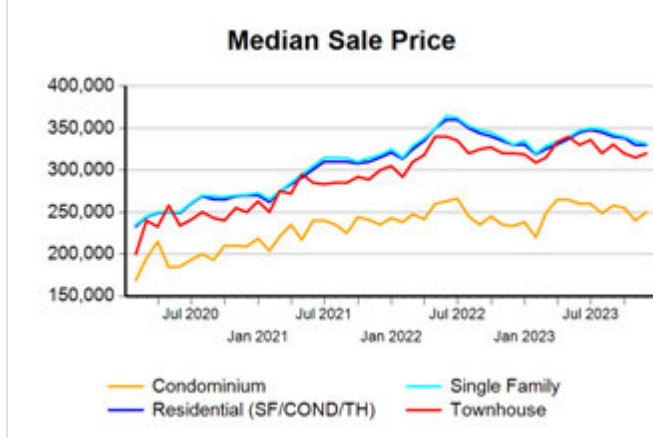
Single Family, New vs. Existing



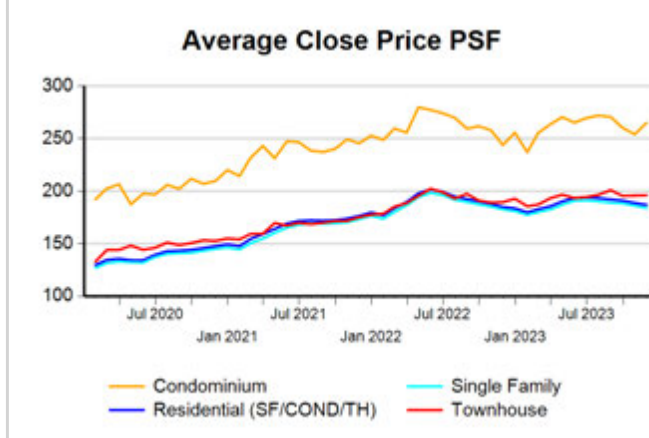
COND/TH, All (New and Existing)



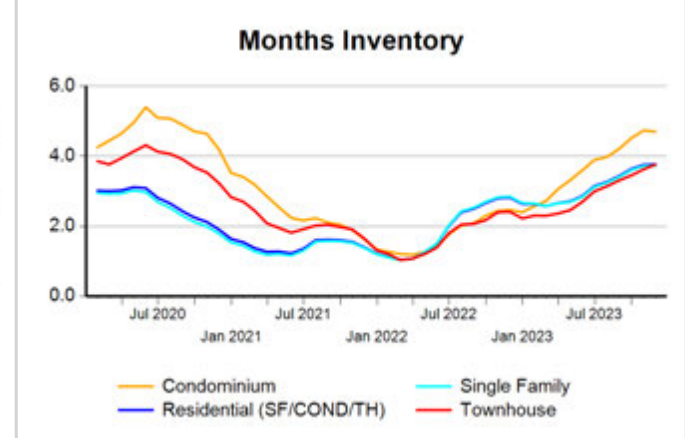
All (New and Existing) Construction



All (New and Existing) Construction



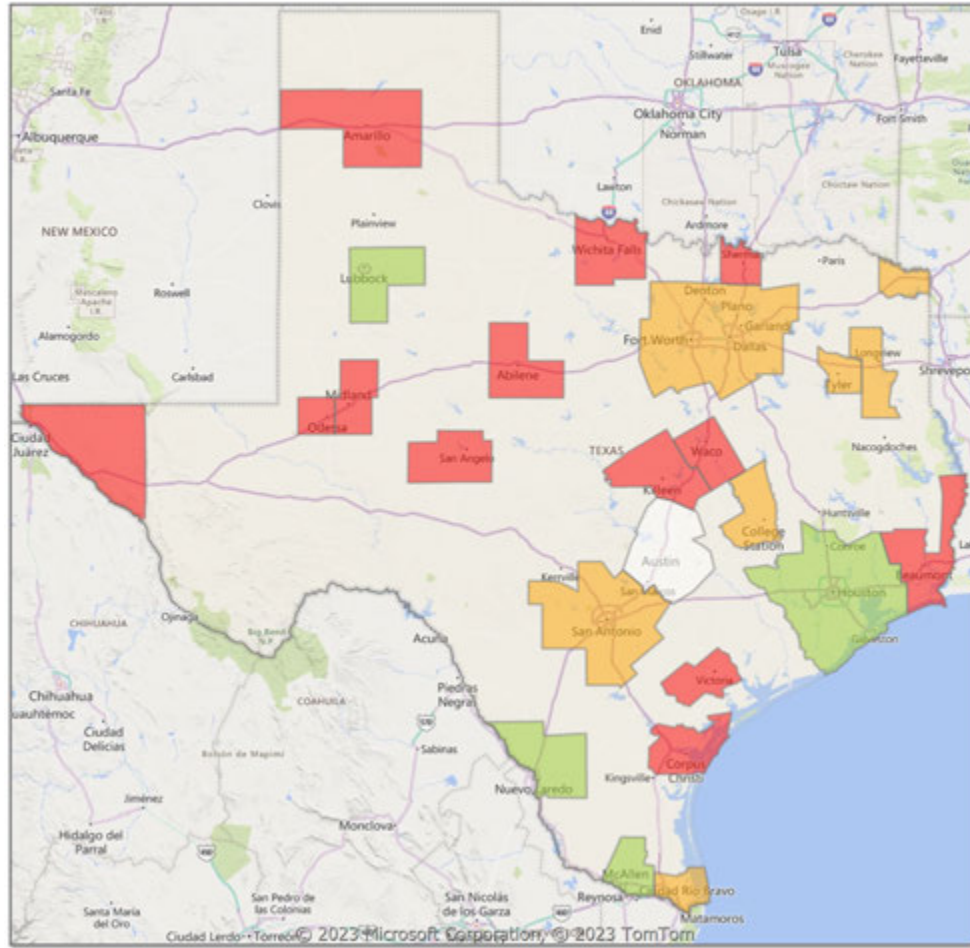
All (New and Existing) Construction



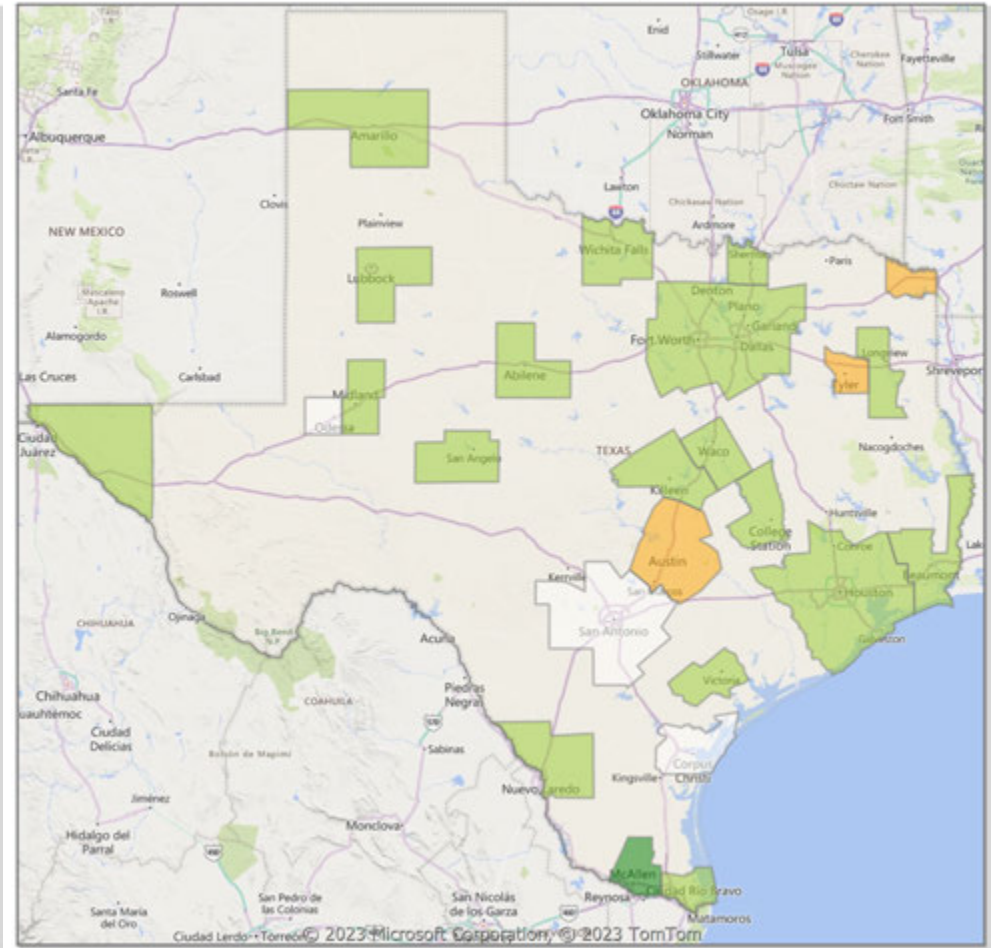
* Closed Sale counts for most recent 3 months are Preliminary.

Comparison By Metropolitan Statistical Area in Texas

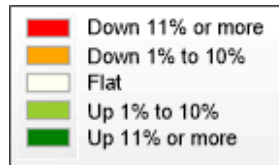
Residential* Closed Sales YoY Percentage Change



Residential* Avg Close Price Per SqFt YoY Percentage Change

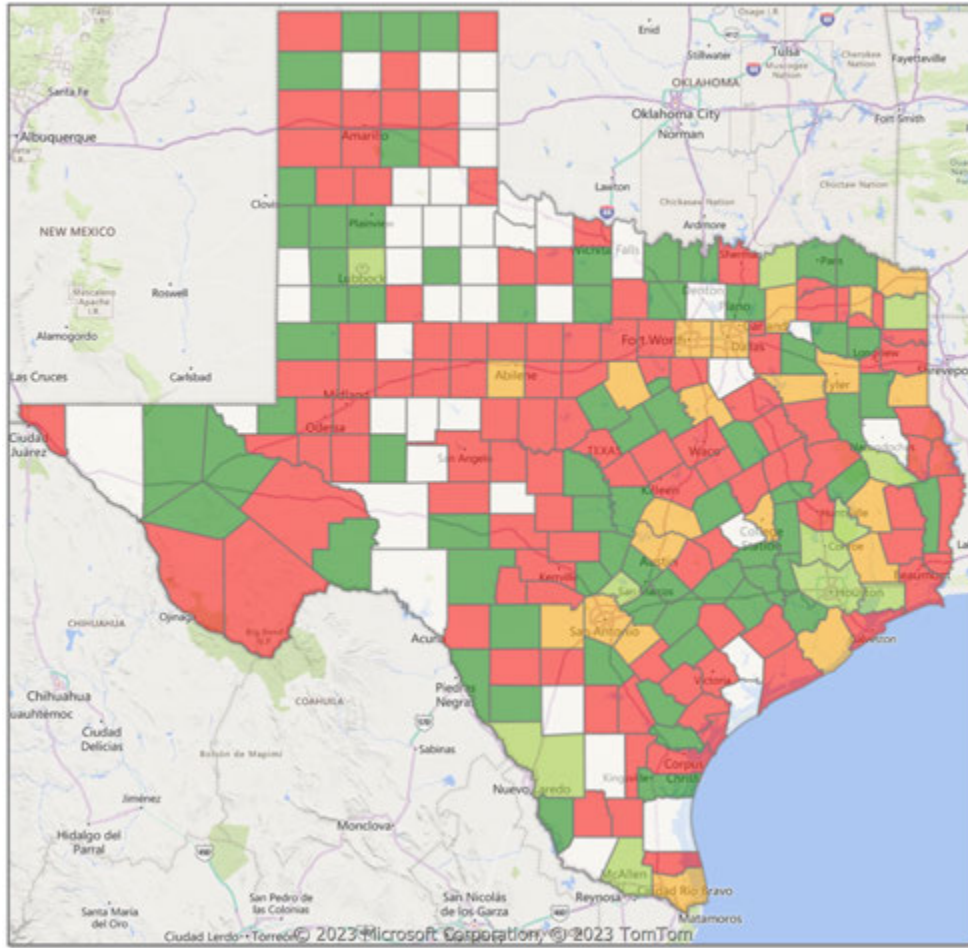


* Residential includes Single Family, Condominium and Townhouse.

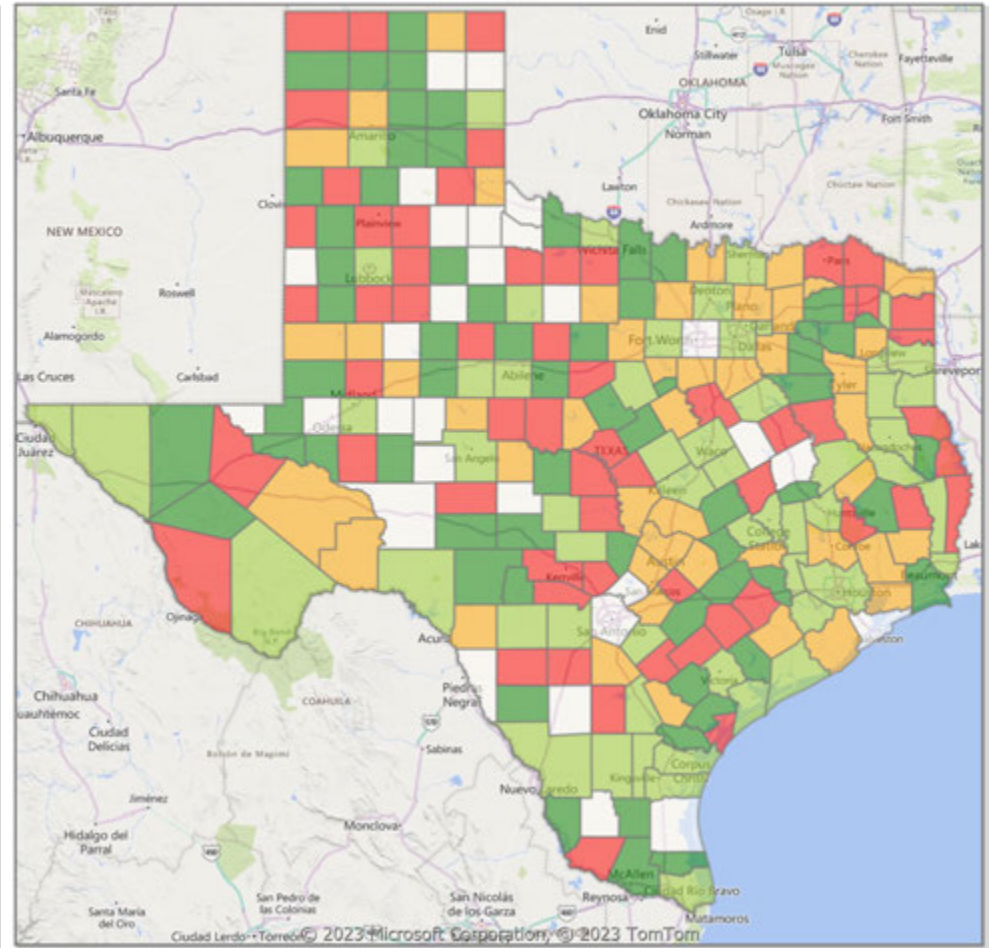


Comparison By County in Texas

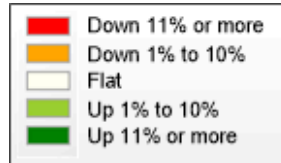
**Residential* Closed Sales
YoY Percentage Change**



**Residential* Avg Close Price Per SqFt
YoY Percentage Change**



* Residential includes Single Family, Condominium and Townhouse.



Market Analysis By Metropolitan Statistical Area: Lubbock

Property Type	Closed Sales*	YoY%	Dollar Volume	YoY%	Average Price	YoY%	Median Price	YoY%	Price/Sqft	YoY%	DOM	New Listings	Active Listings	Pending Sales	Months Inventory	Close To OLP
All(New and Existing)																
Residential (SF/COND/TH)	313	7.6%	\$89,782,396	9.5%	\$286,845	1.8%	\$235,000	0.2%	\$138	1.5%	47	519	1,385	345	3.7	94.6%
YTD:	4,257	-5.5%	\$1,208,170,427	-4.8%	\$283,808	0.7%	\$241,000	-0.3%	\$137	1.5%	38	7,551	1,133	4,394		96.5%
Single Family	309	8.4%	\$89,033,752	10.1%	\$288,135	1.5%	\$236,000	-0.4%	\$138	1.6%	47	509	1,320	341	3.6	94.5%
YTD:	4,140	-5.9%	\$1,182,245,966	-5.4%	\$285,567	0.5%	\$245,000	0.0%	\$137	1.5%	38	7,285	1,079	4,283		96.5%
Townhouse	3	-25.0%	\$678,000	-20.7%	\$226,000	5.7%	\$207,000	16.6%	\$150	0.1%	15	6	59	2	6.9	99.9%
YTD:	96	29.7%	\$19,445,876	32.1%	\$202,561	1.8%	\$199,900	5.2%	\$134	2.9%	44	236	49	91		95.3%
Condominium	1	-50.0%	\$90,000	-58.2%	\$90,000	-16.5%	\$90,000	-16.5%	\$72	-35.3%	13	4	6	2	3.0	90.9%
YTD:	21	-30.0%	\$6,512,000	37.8%	\$310,095	96.8%	\$220,000	67.3%	\$128	-1.2%	20	30	4	20		94.9%

* Closed Sale counts for most recent 3 months are Preliminary.

Existing Home

Residential (SF/COND/TH)	222	-7.5%	\$59,632,012	-8.2%	\$268,613	-0.7%	\$220,000	2.3%	\$129	0.1%	47	386	956	236	3.2	93.2%
YTD:	3,350	-8.7%	\$887,596,049	-8.5%	\$264,954	0.3%	\$225,000	0.9%	\$130	1.9%	31	5,605	721	3,412		96.2%
Single Family	218	-7.2%	\$58,814,171	-8.1%	\$269,790	-1.0%	\$221,500	3.0%	\$129	0.2%	48	377	931	233	3.2	93.1%
YTD:	3,281	-8.7%	\$871,346,320	-8.9%	\$265,573	-0.2%	\$225,000	0.0%	\$130	1.9%	31	5,494	704	3,351		96.2%
Townhouse	2	-33.3%	\$471,000	-31.7%	\$235,500	2.4%	\$235,500	24.0%	\$155	2.3%	2	5	20	1	4.8	99.8%
YTD:	47	-2.1%	\$9,481,446	0.4%	\$201,733	2.6%	\$185,000	-3.9%	\$129	5.2%	33	82	12	41		97.5%
Condominium	1	-50.0%	\$90,000	-58.2%	\$90,000	-16.5%	\$90,000	-16.5%	\$72	-35.3%	13	4	5	2	2.5	90.9%
YTD:	21	-30.0%	\$6,512,000	37.8%	\$310,095	96.8%	\$220,000	67.3%	\$128	-1.2%	20	29	4	20		94.9%

* Closed Sale counts for most recent 3 months are Preliminary.

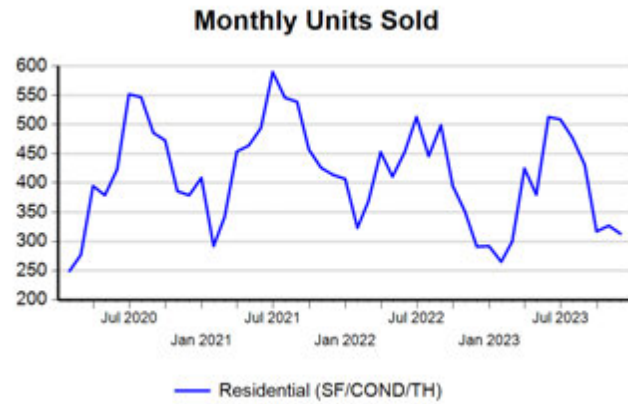
New Construction

Residential (SF/COND/TH)	91	78.4%	\$30,126,703	76.8%	\$331,063	-0.9%	\$270,000	-11.5%	\$160	-5.4%	45	133	429	109	5.3	98.0%
YTD:	908	9.0%	\$320,923,537	7.2%	\$353,440	-1.7%	\$301,500	-6.7%	\$166	-2.8%	63	1,946	411	982		97.6%
Single Family	90	80.0%	\$29,925,473	77.3%	\$332,505	-1.5%	\$270,495	-11.3%	\$160	-5.5%	45	132	389	108	5.1	98.0%
YTD:	858	6.3%	\$310,640,113	5.6%	\$362,051	-0.7%	\$315,250	-4.5%	\$168	-2.4%	63	1,791	374	932		97.9%
Townhouse	1	0.0%	\$207,000	25.5%	\$207,000	25.5%	\$207,000	25.5%	\$141	-3.3%	40	1	39	1	9.0	100.0%
YTD:	49	88.5%	\$9,964,430	88.8%	\$203,356	0.2%	\$199,900	7.5%	\$139	-3.8%	55	154	36	50		93.2%
Condominium	-	0.0%	-	0.0%	-	0.0%	-	0.0%	-	0.0%	-	-	1	0	-	0.0%
YTD:	-	0.0%	-	0.0%	-	0.0%	-	0.0%	-	0.0%	-	1	1	0		0.0%

* Closed Sale counts for most recent 3 months are Preliminary.

Trend Analysis By Metropolitan Statistical Area: Lubbock

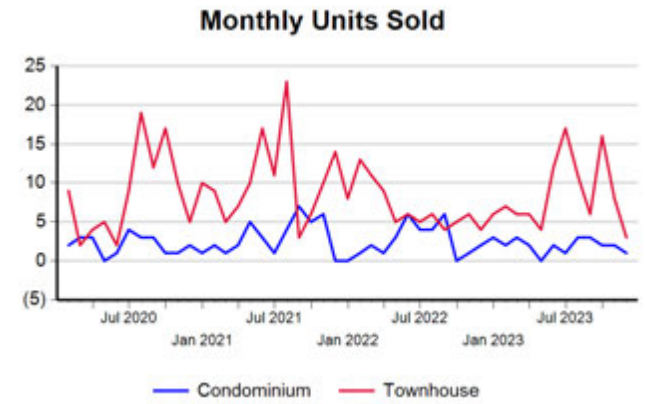
Residential, All (New and Existing)



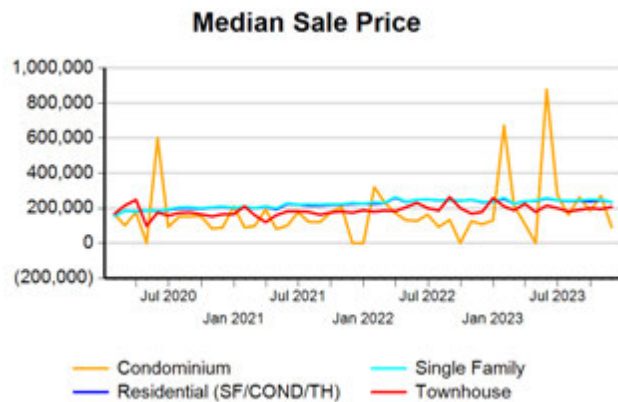
Single Family, New vs. Existing



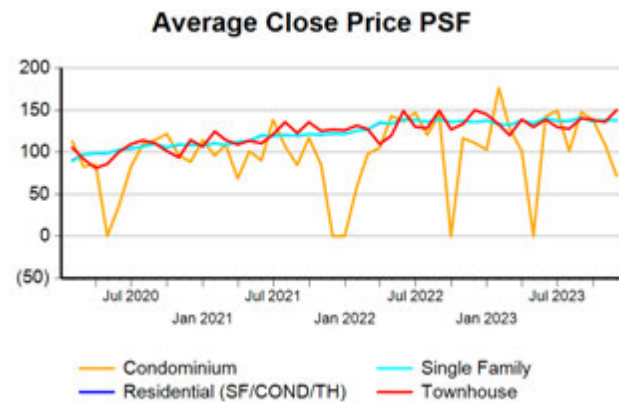
COND/TH, All (New and Existing)



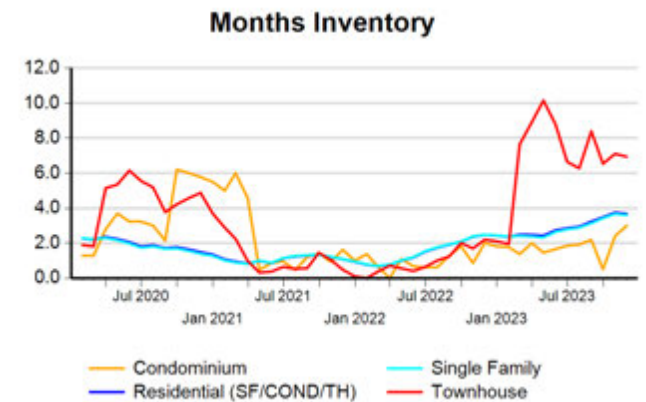
All (New and Existing) Construction



All (New and Existing) Construction



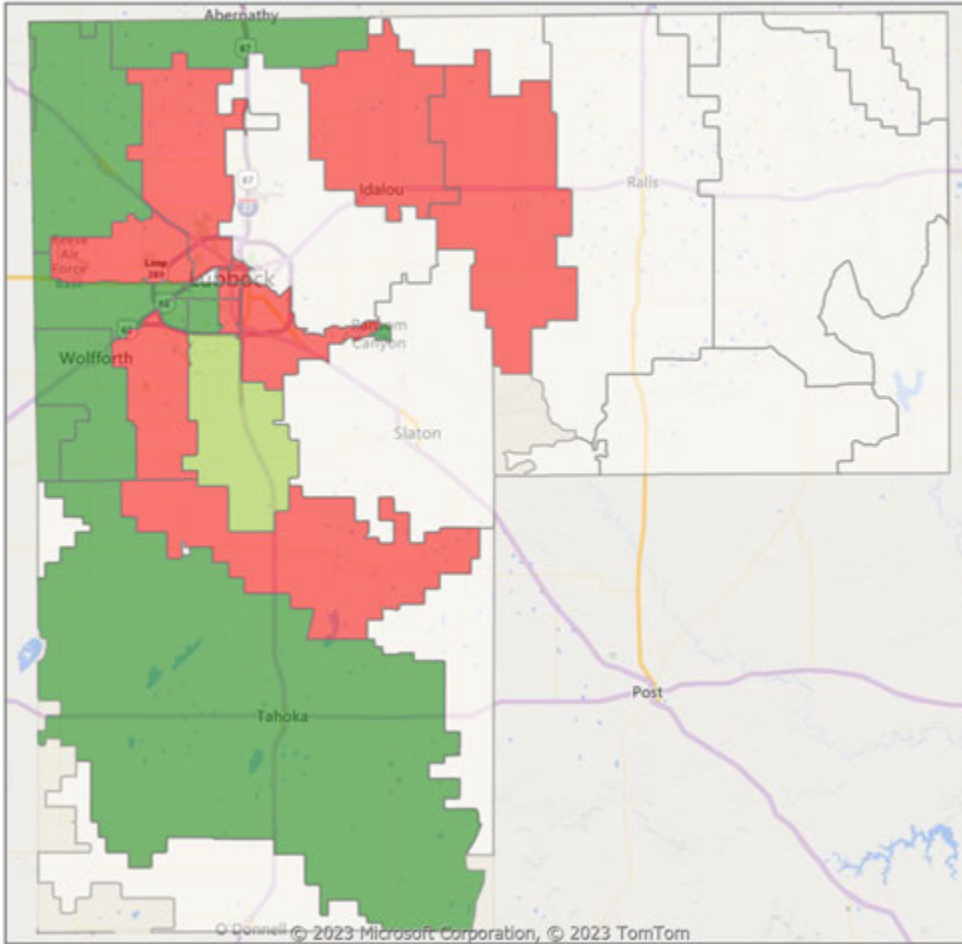
All (New and Existing) Construction



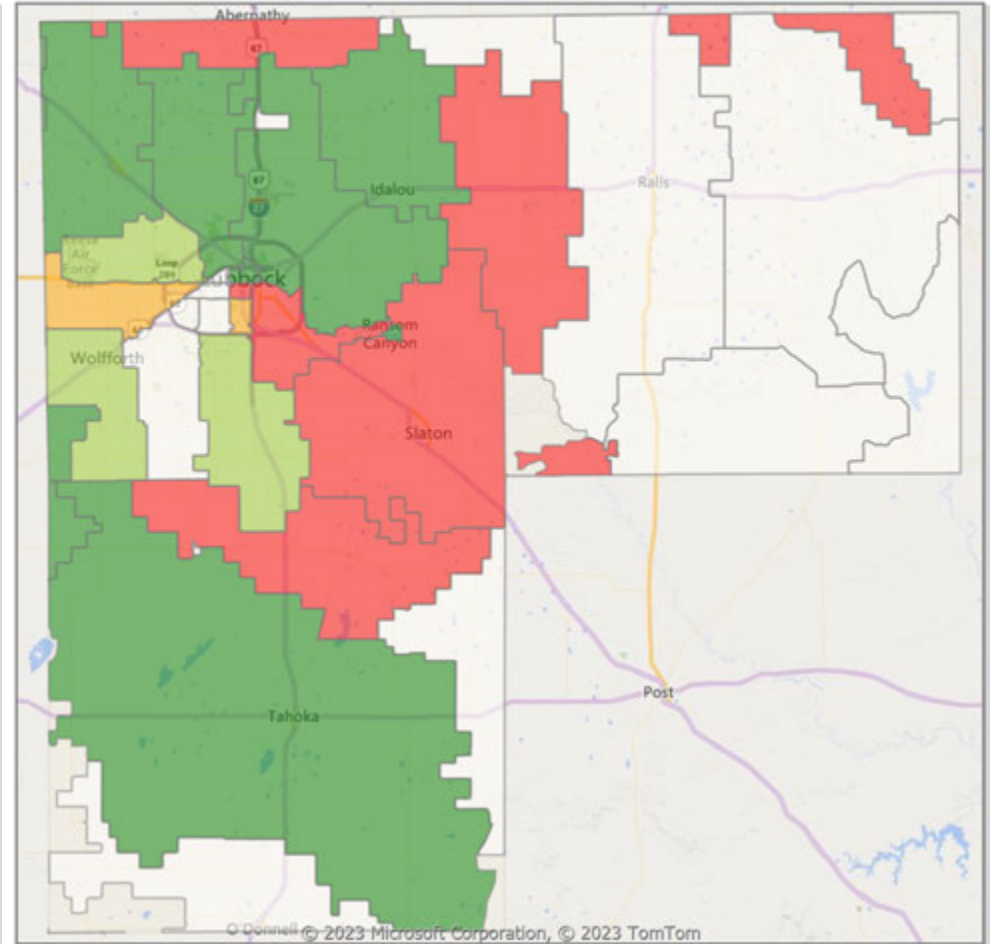
* Closed Sale counts for most recent 3 months are Preliminary.

Comparison By Zip Code* in Lubbock MSA

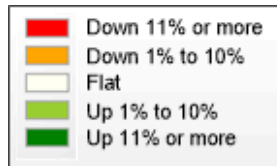
Residential Closed Sales
YoY Percentage Change**



Residential Avg Close Price Per SqFt
YoY Percentage Change**

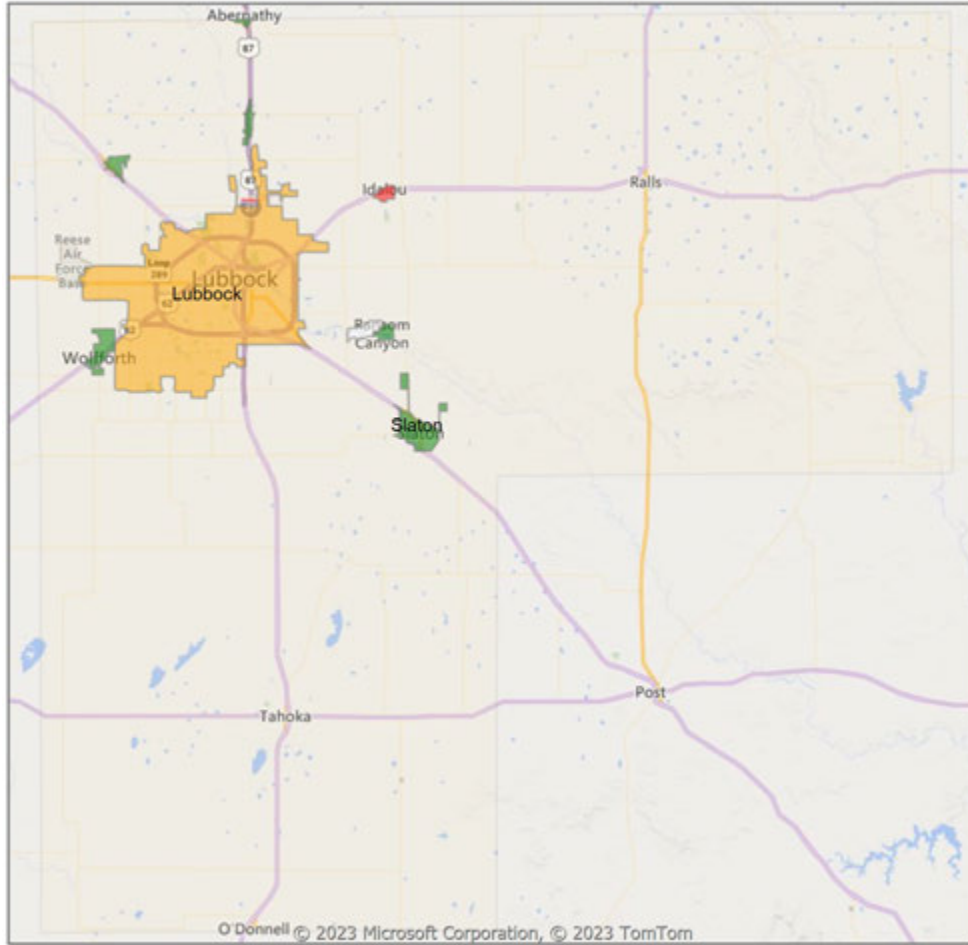


* US Census Zip Code Tabulation Area
** Residential includes Single Family, Condominium and Townhouse.

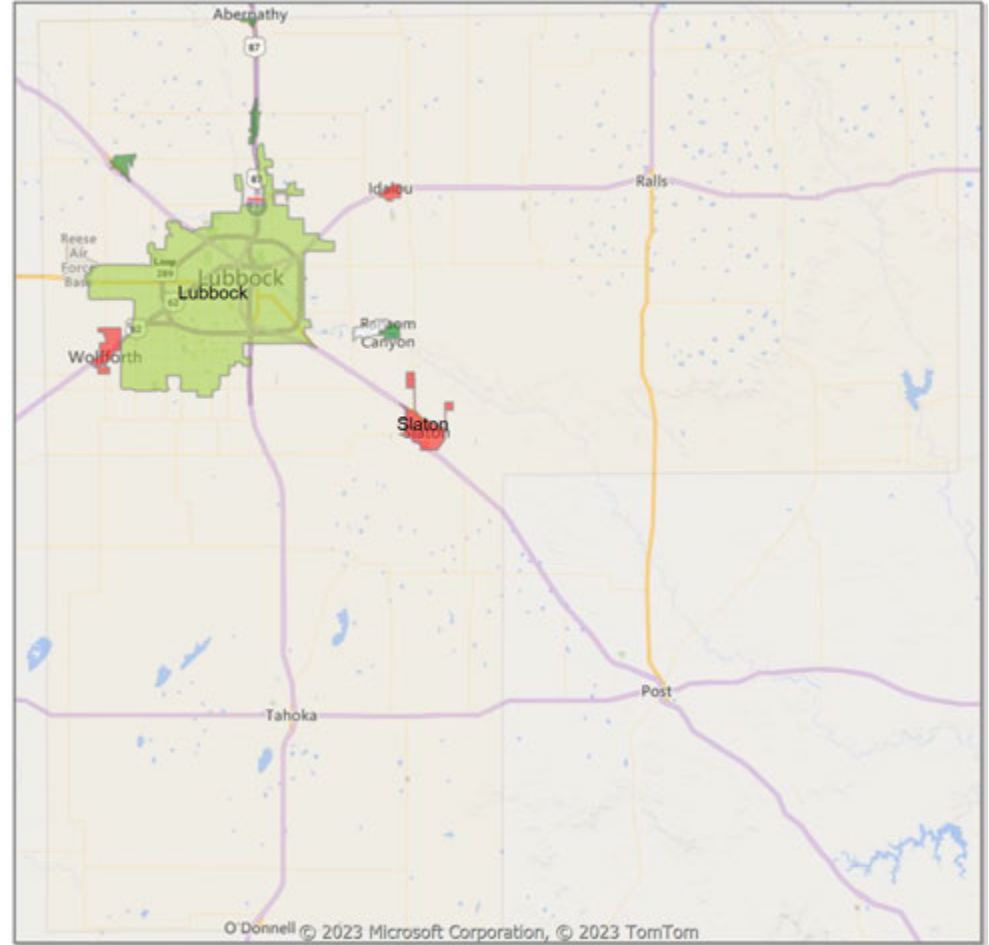


Comparison By Local Market Area* in Lubbock MSA

Residential Closed Sales
YoY Percentage Change**

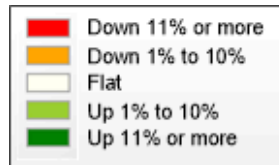


Residential Avg Close Price Per SqFt
YoY Percentage Change**



* Census Place Group

** Residential includes Single Family, Condominium and Townhouse.



Market Analysis By County: Hockley County

Property Type	Closed Sales*	YoY%	Dollar Volume	YoY%	Average Price	YoY%	Median Price	YoY%	Price/Sqft	YoY%	DOM	New Listings	Active Listings	Pending Sales	Months Inventory	Close To OLP
All(New and Existing)																
Residential (SF/COND/TH)	17	54.6%	\$3,941,300	87.8%	\$231,841	21.5%	\$185,000	9.5%	\$117	20.9%	46	18	81	14	5.3	94.8%
YTD:	168	3.7%	\$36,917,600	18.5%	\$219,748	14.3%	\$192,750	7.9%	\$106	10.4%	52	326	67	177		95.0%
Single Family	17	54.6%	\$3,941,300	87.8%	\$231,841	21.5%	\$185,000	9.5%	\$117	20.9%	46	18	80	14	5.3	94.8%
YTD:	168	4.4%	\$36,917,600	19.2%	\$219,748	14.2%	\$192,750	8.6%	\$106	10.5%	52	325	66	177		95.0%
Townhouse	-	0.0%	-	0.0%	-	0.0%	-	0.0%	-	0.0%	-	-	-	-	-	0.0%
YTD:	-	-100.0%	-	-100.0%	-	-100.0%	-	-100.0%	-	-100.0%	-	-	-	-	-	0.0%
Condominium	-	0.0%	-	0.0%	-	0.0%	-	0.0%	-	0.0%	-	-	1	-	-	0.0%
YTD:	-	0.0%	-	0.0%	-	0.0%	-	0.0%	-	0.0%	-	1	1	-	-	0.0%
Existing Home																
Residential (SF/COND/TH)	16	45.5%	\$3,791,300	80.6%	\$236,956	24.2%	\$203,450	20.4%	\$118	22.1%	42	14	74	12	5.0	95.2%
YTD:	164	1.9%	\$35,903,600	16.7%	\$218,924	14.6%	\$192,750	8.6%	\$106	10.3%	51	308	63	173		94.9%
Single Family	16	45.5%	\$3,791,300	80.6%	\$236,956	24.2%	\$203,450	20.4%	\$118	22.1%	42	14	73	12	4.9	95.2%
YTD:	164	2.5%	\$35,903,600	17.4%	\$218,924	14.6%	\$192,750	8.7%	\$106	10.3%	51	307	62	173		94.9%
Townhouse	-	0.0%	-	0.0%	-	0.0%	-	0.0%	-	0.0%	-	-	-	-	-	0.0%
YTD:	-	-100.0%	-	-100.0%	-	-100.0%	-	-100.0%	-	-100.0%	-	-	-	-	-	0.0%
Condominium	-	0.0%	-	0.0%	-	0.0%	-	0.0%	-	0.0%	-	-	1	-	-	0.0%
YTD:	-	0.0%	-	0.0%	-	0.0%	-	0.0%	-	0.0%	-	1	1	-	-	0.0%
New Construction																
Residential (SF/COND/TH)	1	100.0%	\$150,000	100.0%	\$150,000	100.0%	\$150,000	100.0%	\$97	100.0%	109	4	7	2	21.0	88.3%
YTD:	4	300.0%	\$1,014,000	155.9%	\$253,500	-36.0%	\$200,000	-49.5%	\$126	-15.4%	99	18	4	4		97.9%
Single Family	1	100.0%	\$150,000	100.0%	\$150,000	100.0%	\$150,000	100.0%	\$97	100.0%	109	4	7	2	21.0	88.3%
YTD:	4	300.0%	\$1,014,000	155.9%	\$253,500	-36.0%	\$200,000	-49.5%	\$126	-15.4%	99	18	4	4		97.9%
Townhouse	-	0.0%	-	0.0%	-	0.0%	-	0.0%	-	0.0%	-	-	-	-	-	0.0%
YTD:	-	0.0%	-	0.0%	-	0.0%	-	0.0%	-	0.0%	-	-	-	-	-	0.0%
Condominium	-	0.0%	-	0.0%	-	0.0%	-	0.0%	-	0.0%	-	-	-	-	-	0.0%
YTD:	-	0.0%	-	0.0%	-	0.0%	-	0.0%	-	0.0%	-	-	-	-	-	0.0%

* Closed Sale counts for most recent 3 months are Preliminary.

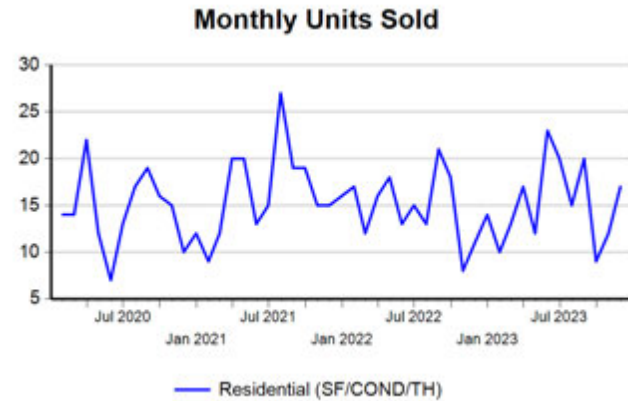
Market Analysis By County: Lubbock County

Property Type	Closed Sales*	YoY%	Dollar Volume	YoY%	Average Price	YoY%	Median Price	YoY%	Price/Sqft	YoY%	DOM	New Listings	Active Listings	Pending Sales	Months Inventory	Close To OLP
All(New and Existing)																
Residential (SF/COND/TH)	306	6.6%	\$89,077,783	10.3%	\$291,104	3.5%	\$237,655	1.1%	\$139	2.3%	44	509	1,345	337	3.6	95.0%
YTD:	4,165	-5.9%	\$1,189,481,684	-5.1%	\$285,590	0.8%	\$243,000	-0.4%	\$138	1.6%	38	7,373	1,093	4,295		96.6%
Single Family	302	7.5%	\$88,330,502	10.8%	\$292,485	3.1%	\$237,953	-0.4%	\$140	2.4%	45	499	1,280	333	3.6	95.0%
YTD:	4,049	-6.3%	\$1,163,743,486	-5.7%	\$287,415	0.6%	\$245,000	0.0%	\$138	1.6%	37	7,107	1,040	4,185		96.7%
Townhouse	3	-25.0%	\$678,000	-20.7%	\$226,000	5.7%	\$207,000	16.6%	\$150	0.1%	15	6	59	2	6.9	99.9%
YTD:	96	29.7%	\$19,445,876	32.1%	\$202,561	1.8%	\$199,900	5.2%	\$134	2.9%	44	236	49	91		95.3%
Condominium	1	-50.0%	\$90,000	-58.2%	\$90,000	-16.5%	\$90,000	-16.5%	\$72	-35.3%	13	4	6	2	3.1	90.9%
YTD:	20	-33.3%	\$6,327,000	33.8%	\$316,350	100.8%	\$241,000	83.3%	\$132	1.8%	20	30	4	19		95.5%
Existing Home																
Residential (SF/COND/TH)	216	-8.5%	\$59,209,575	-7.1%	\$274,118	1.5%	\$225,000	4.7%	\$131	1.4%	45	377	923	229	3.2	93.8%
YTD:	3,263	-9.3%	\$870,942,309	-9.0%	\$266,915	0.3%	\$225,000	0.0%	\$131	2.0%	31	5,442	687	3,320		96.4%
Single Family	212	-8.2%	\$58,387,395	-7.1%	\$275,412	1.3%	\$225,500	4.9%	\$131	1.5%	45	368	898	226	3.2	93.8%
YTD:	3,195	-9.2%	\$854,876,080	-9.4%	\$267,567	-0.2%	\$225,500	0.2%	\$131	2.0%	31	5,331	671	3,260		96.4%
Townhouse	2	-33.3%	\$471,000	-31.7%	\$235,500	2.4%	\$235,500	24.0%	\$155	2.3%	2	5	20	1	4.8	99.8%
YTD:	47	-2.1%	\$9,481,446	0.4%	\$201,733	2.6%	\$185,000	-3.9%	\$129	5.2%	33	82	12	41		97.5%
Condominium	1	-50.0%	\$90,000	-58.2%	\$90,000	-16.5%	\$90,000	-16.5%	\$72	-35.3%	13	4	5	2	2.6	90.9%
YTD:	20	-33.3%	\$6,327,000	33.8%	\$316,350	100.8%	\$241,000	83.3%	\$132	1.8%	20	29	4	19		95.5%
New Construction																
Residential (SF/COND/TH)	90	76.5%	\$29,843,322	75.1%	\$331,592	-0.8%	\$270,000	-11.5%	\$160	-5.5%	43	132	422	108	5.2	98.0%
YTD:	903	9.1%	\$318,882,571	7.6%	\$353,137	-1.4%	\$301,345	-6.7%	\$166	-2.8%	63	1,931	405	975		97.6%
Single Family	89	78.0%	\$29,642,185	75.7%	\$333,058	-1.3%	\$270,000	-11.5%	\$160	-5.7%	43	131	382	107	5.0	98.0%
YTD:	853	6.4%	\$308,599,583	6.0%	\$361,781	-0.4%	\$315,000	-4.0%	\$168	-2.4%	63	1,776	368	925		97.9%
Townhouse	1	0.0%	\$207,000	25.5%	\$207,000	25.5%	\$207,000	25.5%	\$141	-3.3%	40	1	39	1	9.0	100.0%
YTD:	49	88.5%	\$9,964,430	88.8%	\$203,356	0.2%	\$199,900	7.5%	\$139	-3.8%	55	154	36	50		93.2%
Condominium	-	0.0%	-	0.0%	-	0.0%	-	0.0%	-	0.0%	-	-	1	-	-	0.0%
YTD:	-	0.0%	-	0.0%	-	0.0%	-	0.0%	-	0.0%	-	1	1	-	-	0.0%

* Closed Sale counts for most recent 3 months are Preliminary.

Trend Analysis By County: Hockley County

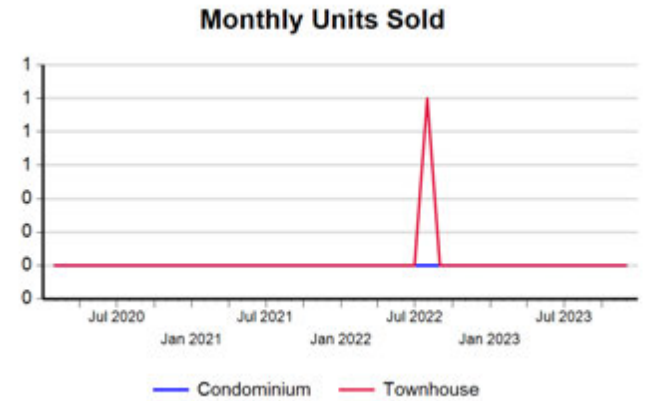
Residential, All (New and Existing)



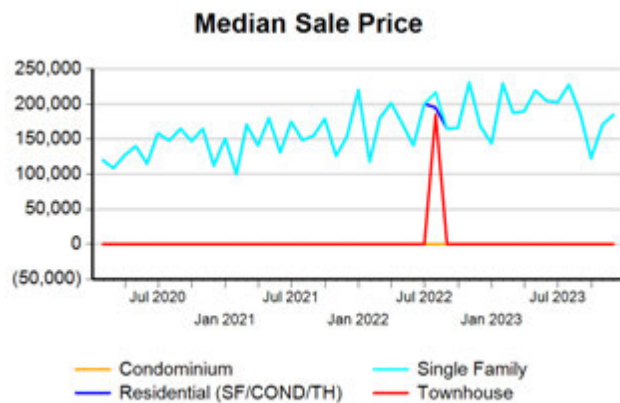
Single Family, New vs. Existing



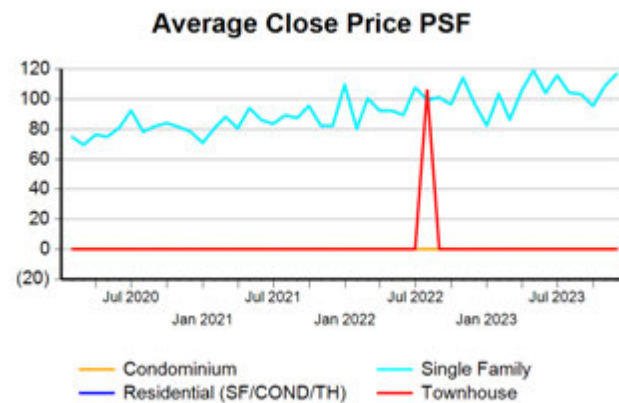
COND/TH, All (New and Existing)



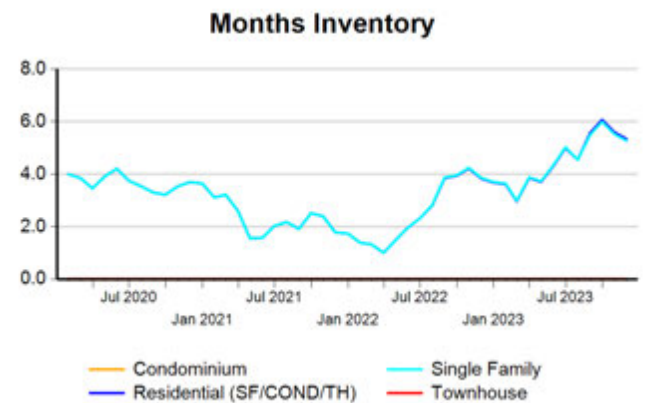
All (New and Existing) Construction



All (New and Existing) Construction



All (New and Existing) Construction



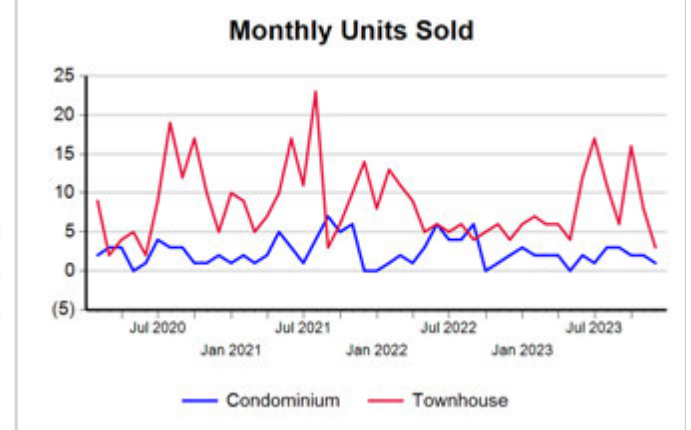
* Closed Sale counts for most recent 3 months are Preliminary.

Trend Analysis By County: Lubbock County

Residential, All (New and Existing)

Single Family, New vs. Existing

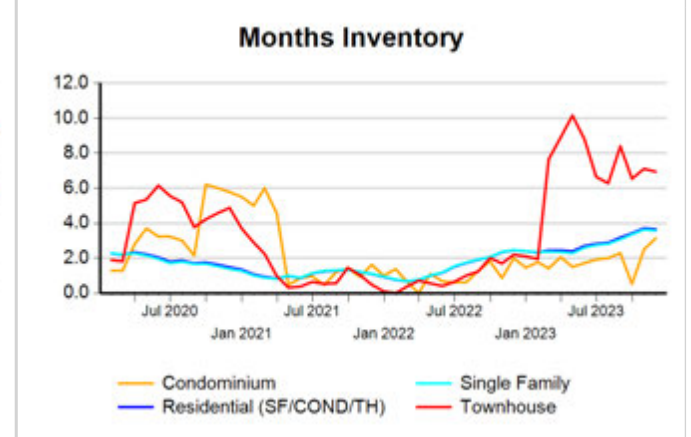
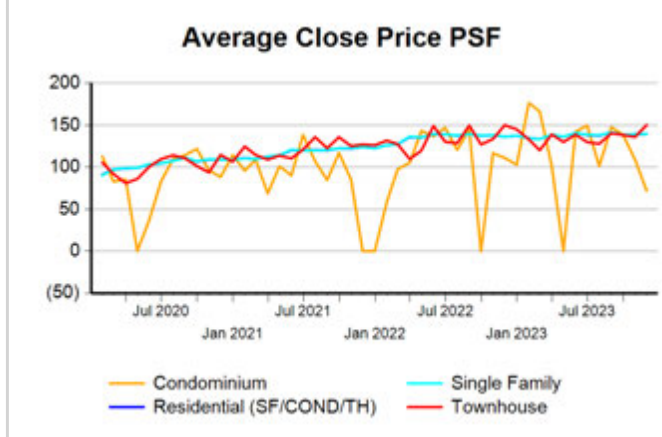
COND/TH, All (New and Existing)



All (New and Existing) Construction

All (New and Existing) Construction

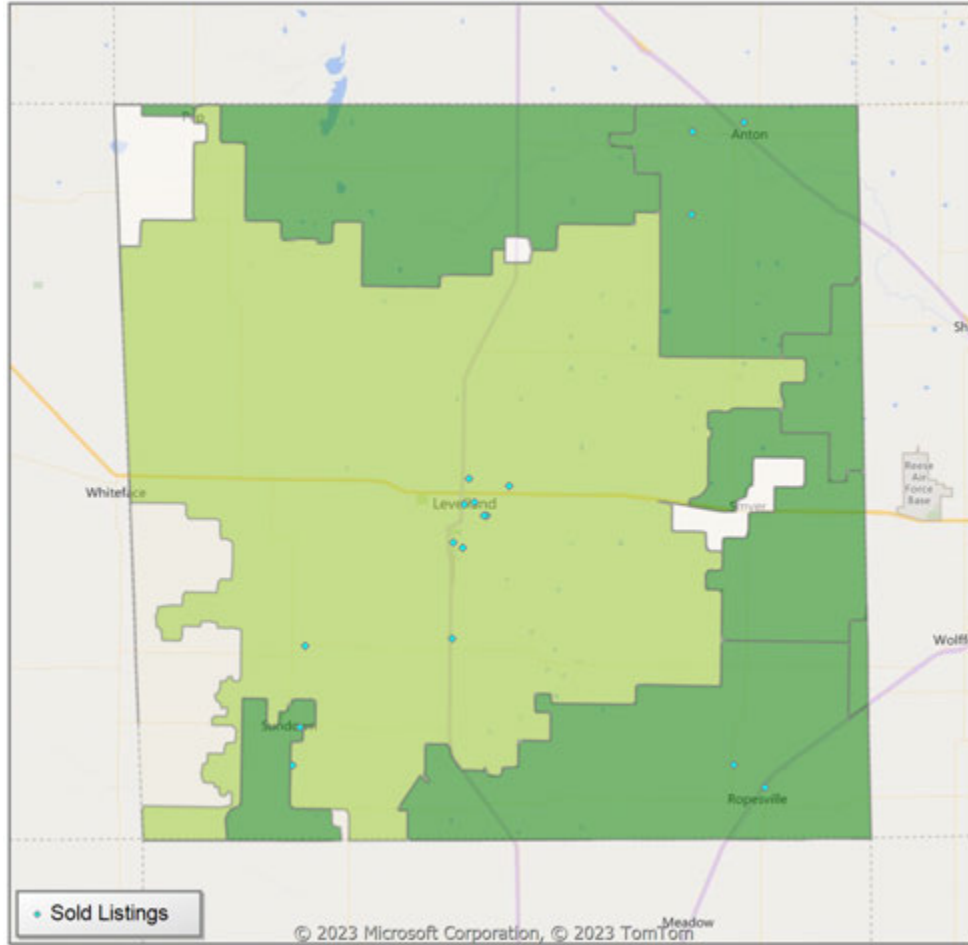
All (New and Existing) Construction



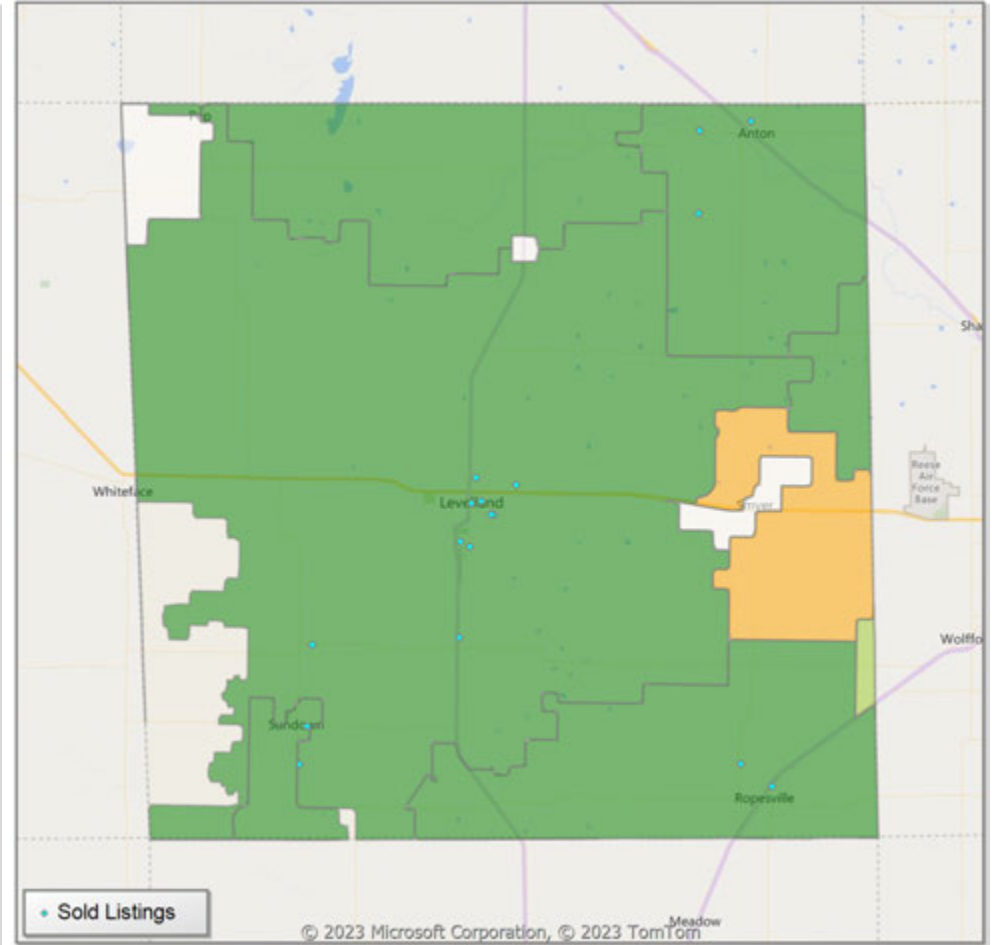
* Closed Sale counts for most recent 3 months are Preliminary.

Comparison By Zip Code* in Hockley County

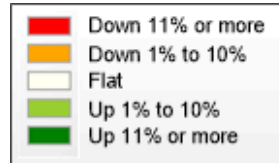
Residential Closed Sales
YoY Percentage Change**



Residential Avg Close Price Per SqFt
YoY Percentage Change**

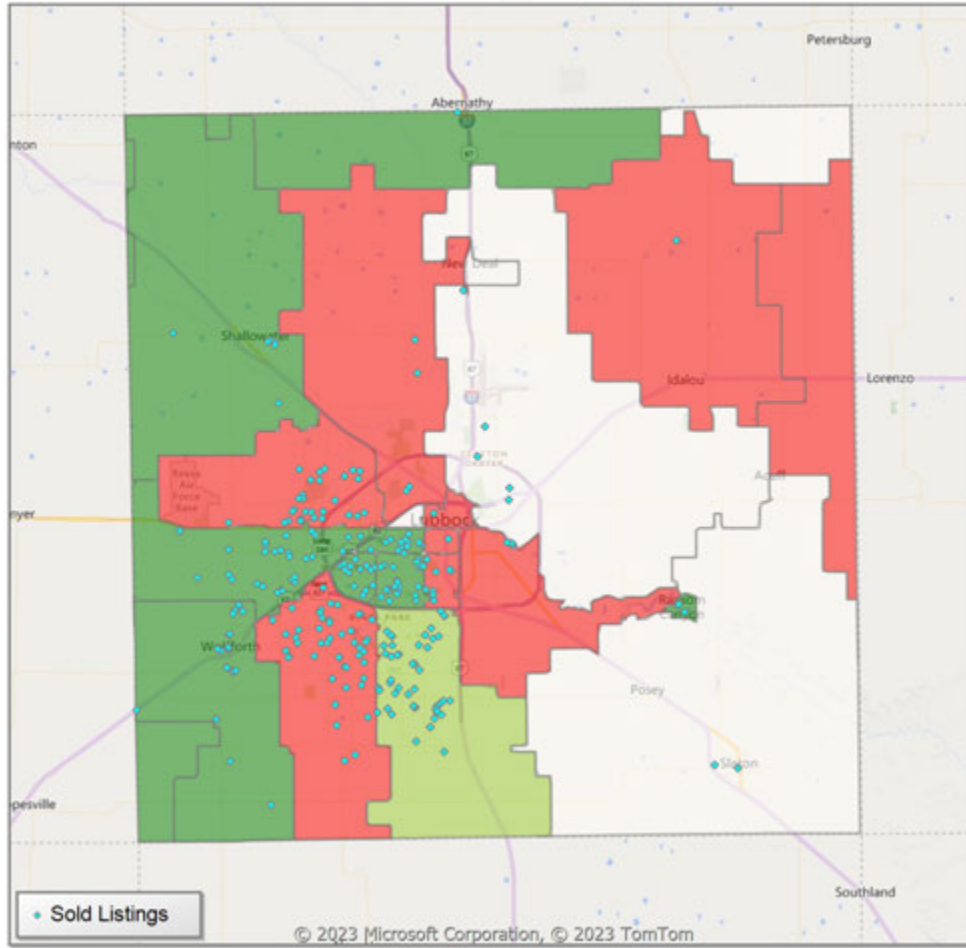


* US Census Zip Code Tabulation Area
** Residential includes Single Family, Condominium and Townhouse.

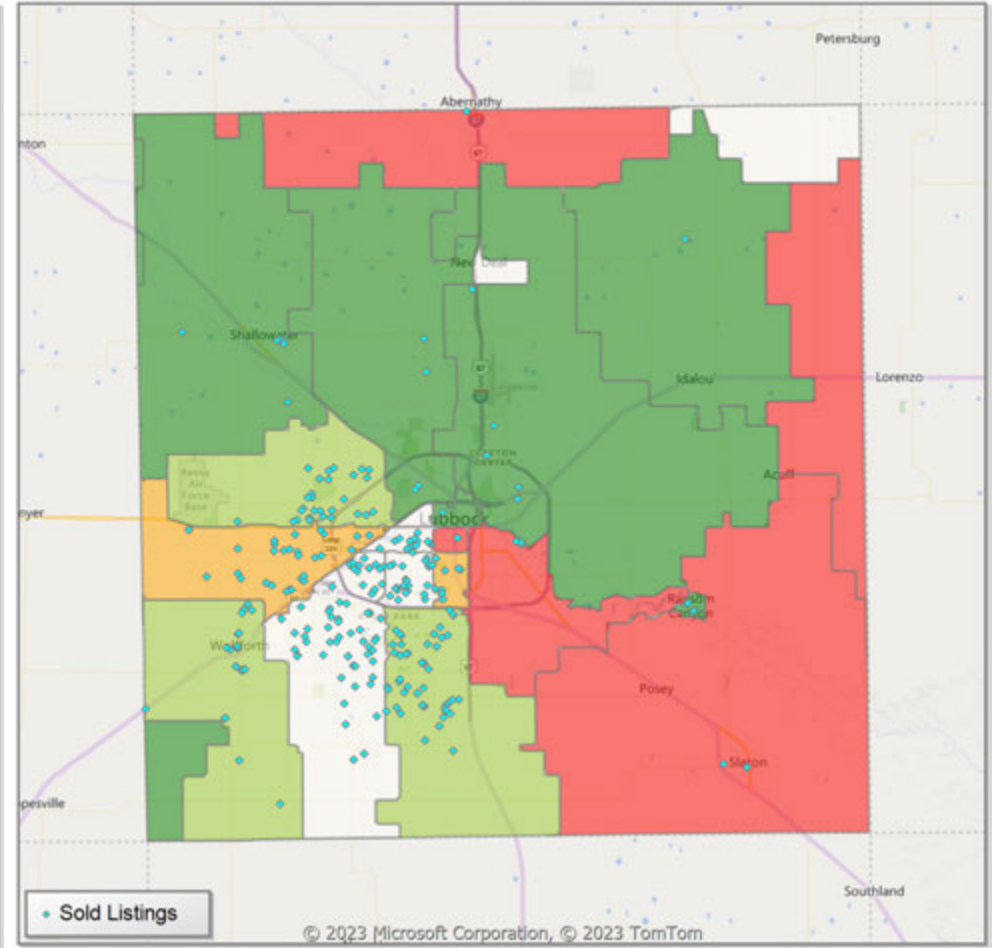


Comparison By Zip Code* in Lubbock County

Residential Closed Sales
YoY Percentage Change**

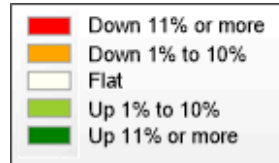


Residential Avg Close Price Per SqFt
YoY Percentage Change**



* US Census Zip Code Tabulation Area

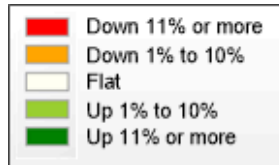
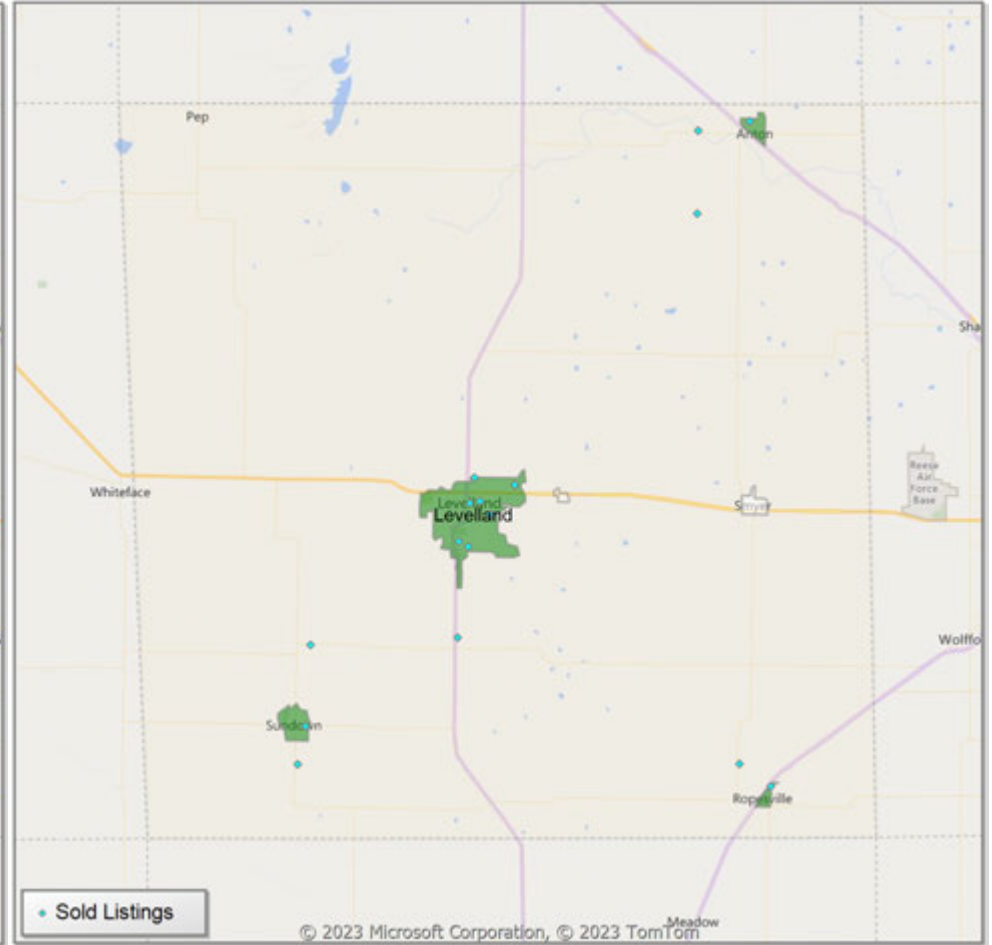
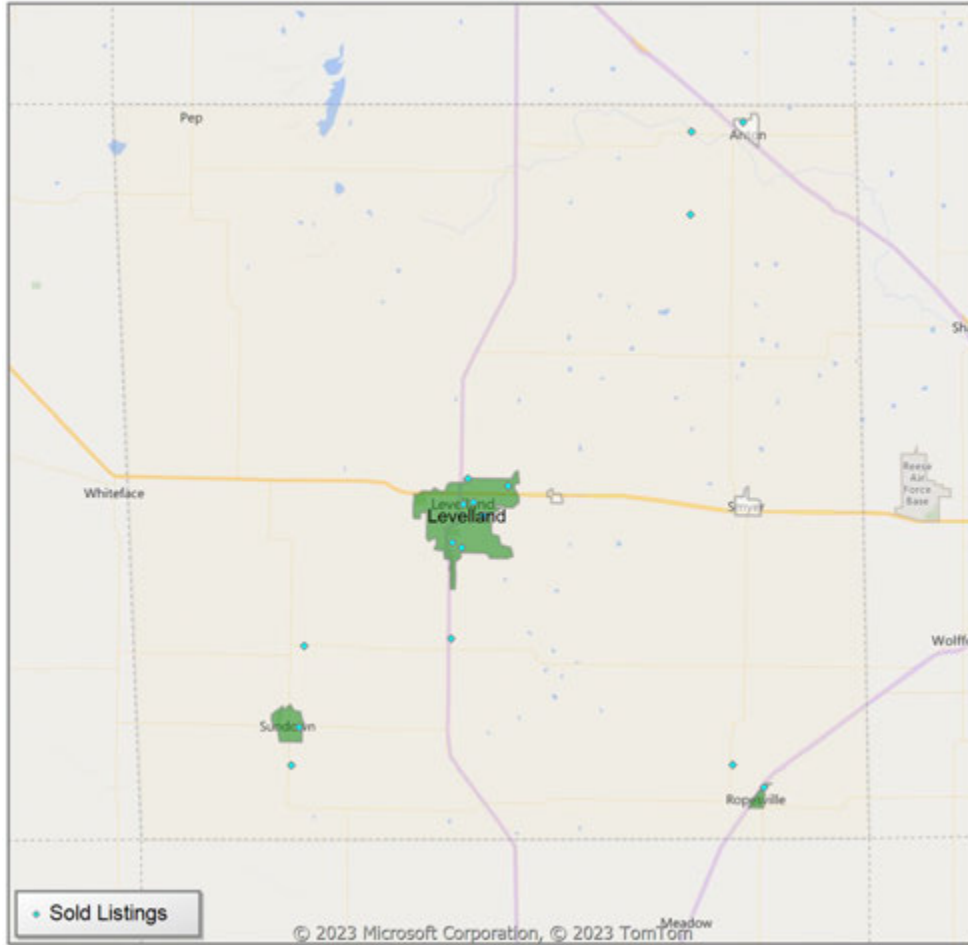
** Residential includes Single Family, Condominium and Townhouse.



Comparison By Local Market Area* in Hockley County

Residential Closed Sales
YoY Percentage Change**

Residential Avg Close Price Per SqFt
YoY Percentage Change**

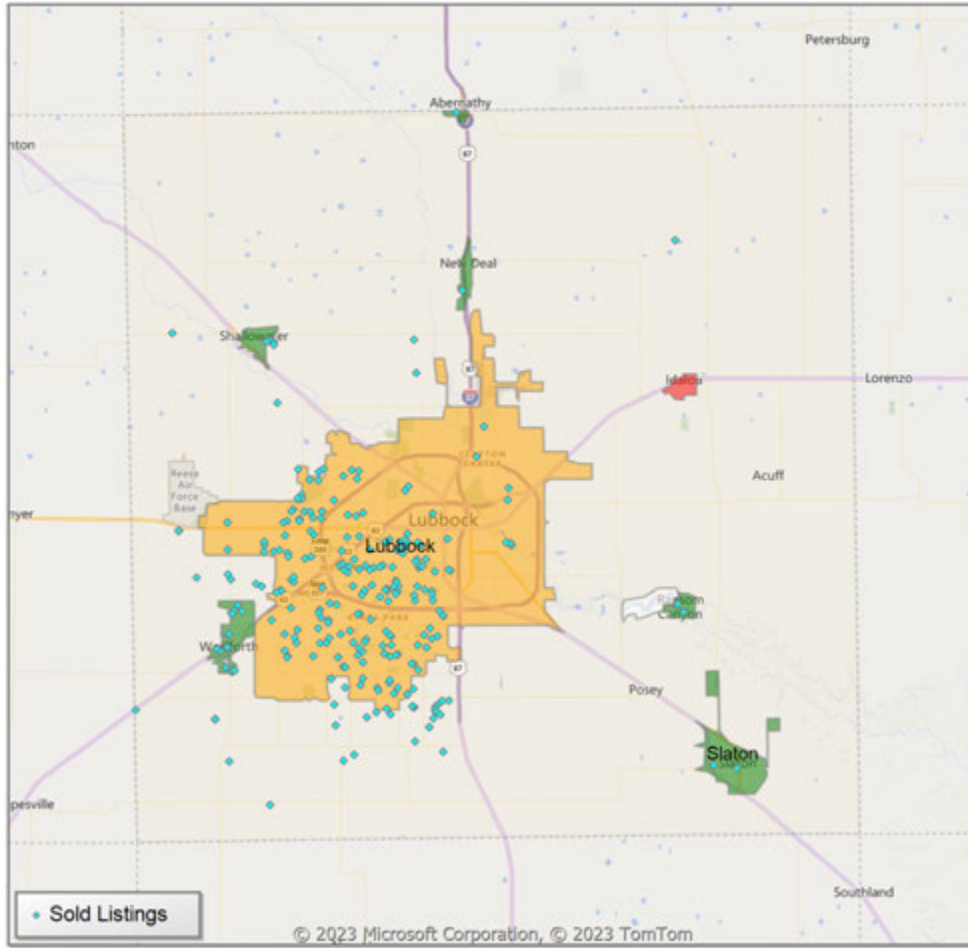


* Census Place Group

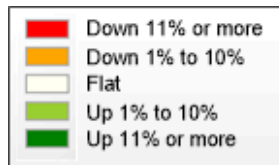
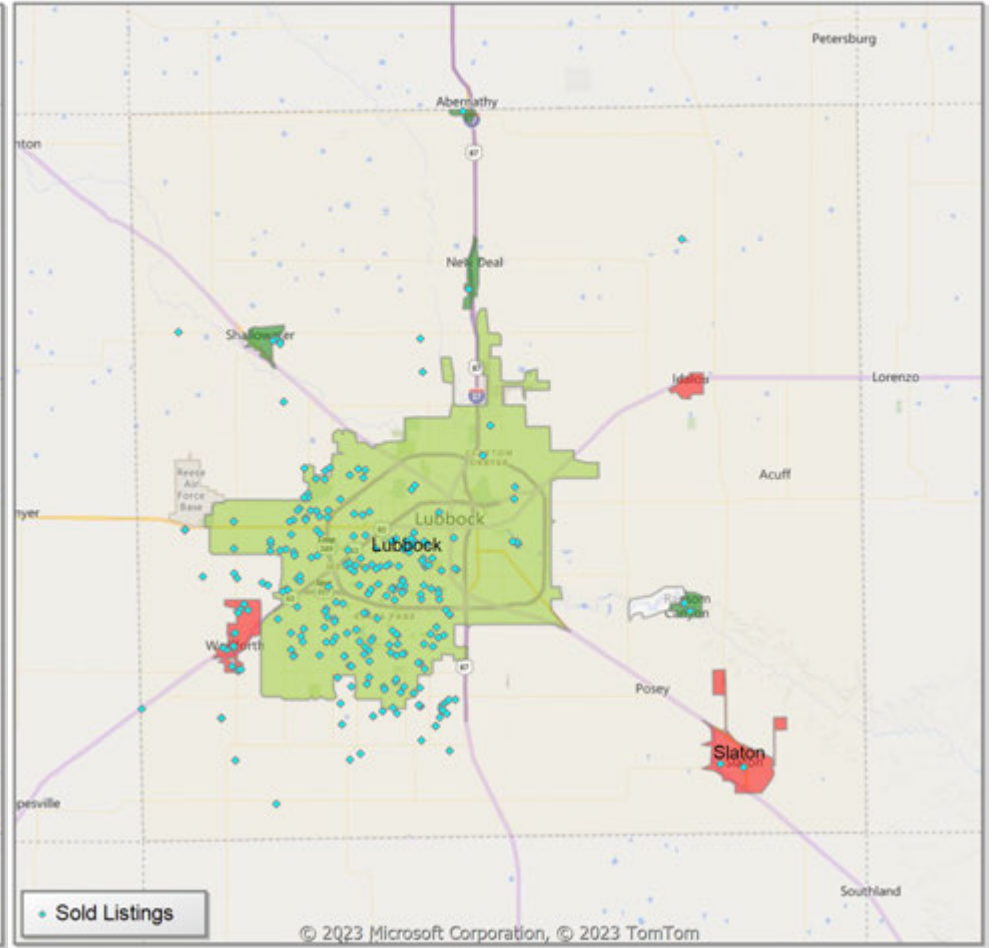
** Residential includes Single Family, Condominium and Townhouse.

Comparison By Local Market Area* in Lubbock County

Residential Closed Sales
YoY Percentage Change**



Residential Avg Close Price Per SqFt
YoY Percentage Change**



* Census Place Group

** Residential includes Single Family, Condominium and Townhouse.

Market Analysis By Local Market Area*: Abernathy

Property Type	Closed Sales**	YoY%	Dollar Volume	YoY%	Average Price	YoY%	Median Price	YoY%	Price/Sqft	YoY%	DOM	New Listings	Active Listings	Pending Sales	Months Inventory	Close To OLP
All(New and Existing)																
Residential (SF/COND/TH)	2	100.0%	\$337,500	100.0%	\$168,750	100.0%	\$168,750	100.0%	\$122	100.0%	13	6	13	1	7.4	97.0%
YTD:	20	-25.9%	\$4,070,800	-7.7%	\$203,540	24.6%	\$200,000	15.6%	\$104	11.7%	32	38	6	21		90.6%
Single Family	2	100.0%	\$337,500	100.0%	\$168,750	100.0%	\$168,750	100.0%	\$122	100.0%	13	6	13	1	7.4	97.0%
YTD:	20	-25.9%	\$4,070,800	-7.7%	\$203,540	24.6%	\$200,000	15.6%	\$104	11.7%	32	38	6	21		90.6%
Townhouse	-	0.0%	-	0.0%	-	0.0%	-	0.0%	-	0.0%	-	-	-	-	-	0.0%
YTD:	-	0.0%	-	0.0%	-	0.0%	-	0.0%	-	0.0%	-	-	-	-	-	0.0%
Condominium	-	0.0%	-	0.0%	-	0.0%	-	0.0%	-	0.0%	-	-	-	-	-	0.0%
YTD:	-	0.0%	-	0.0%	-	0.0%	-	0.0%	-	0.0%	-	-	-	-	-	0.0%
Existing Home																
Residential (SF/COND/TH)	2	100.0%	\$337,500	100.0%	\$168,750	100.0%	\$168,750	100.0%	\$122	100.0%	13	6	13	1	7.4	97.0%
YTD:	20	-23.1%	\$4,070,800	1.8%	\$203,540	32.3%	\$200,000	20.1%	\$104	14.9%	32	37	6	21		90.6%
Single Family	2	100.0%	\$337,500	100.0%	\$168,750	100.0%	\$168,750	100.0%	\$122	100.0%	13	6	13	1	7.4	97.0%
YTD:	20	-23.1%	\$4,070,800	1.8%	\$203,540	32.3%	\$200,000	20.1%	\$104	14.9%	32	37	6	21		90.6%
Townhouse	-	0.0%	-	0.0%	-	0.0%	-	0.0%	-	0.0%	-	-	-	-	-	0.0%
YTD:	-	0.0%	-	0.0%	-	0.0%	-	0.0%	-	0.0%	-	-	-	-	-	0.0%
Condominium	-	0.0%	-	0.0%	-	0.0%	-	0.0%	-	0.0%	-	-	-	-	-	0.0%
YTD:	-	0.0%	-	0.0%	-	0.0%	-	0.0%	-	0.0%	-	-	-	-	-	0.0%
New Construction																
Residential (SF/COND/TH)	-	0.0%	-	0.0%	-	0.0%	-	0.0%	-	0.0%	-	-	-	-	-	0.0%
YTD:	-	-100.0%	-	-100.0%	-	-100.0%	-	-100.0%	-	-100.0%	-	1	1	-	-	0.0%
Single Family	-	0.0%	-	0.0%	-	0.0%	-	0.0%	-	0.0%	-	-	-	-	-	0.0%
YTD:	-	-100.0%	-	-100.0%	-	-100.0%	-	-100.0%	-	-100.0%	-	1	1	-	-	0.0%
Townhouse	-	0.0%	-	0.0%	-	0.0%	-	0.0%	-	0.0%	-	-	-	-	-	0.0%
YTD:	-	0.0%	-	0.0%	-	0.0%	-	0.0%	-	0.0%	-	-	-	-	-	0.0%
Condominium	-	0.0%	-	0.0%	-	0.0%	-	0.0%	-	0.0%	-	-	-	-	-	0.0%
YTD:	-	0.0%	-	0.0%	-	0.0%	-	0.0%	-	0.0%	-	-	-	-	-	0.0%

* Local Market Area Code: 2; Type: Census Place Group
 ** Closed Sale counts for most recent 3 months are Preliminary.

Market Analysis By Local Market Area*: Anton

Property Type	Closed Sales**	YoY%	Dollar Volume	YoY%	Average Price	YoY%	Median Price	YoY%	Price/Sqft	YoY%	DOM	New Listings	Active Listings	Pending Sales	Months Inventory	Close To OLP
All(New and Existing)																
Residential (SF/COND/TH)	1	0.0%	\$78,000	-8.2%	\$78,000	-8.2%	\$78,000	-8.2%	\$79	13.8%	43	2	5	2	6.7	87.2%
YTD:	8	33.3%	\$732,700	-22.1%	\$91,588	-41.6%	\$85,250	-43.4%	\$68	-2.0%	50	18	4	9		93.2%
Single Family	1	0.0%	\$78,000	-8.2%	\$78,000	-8.2%	\$78,000	-8.2%	\$79	13.8%	43	2	5	2	6.7	87.2%
YTD:	8	33.3%	\$732,700	-22.1%	\$91,588	-41.6%	\$85,250	-43.4%	\$68	-2.0%	50	18	4	9		93.2%
Townhouse	-	0.0%	-	0.0%	-	0.0%	-	0.0%	-	0.0%	-	-	-	-	-	0.0%
YTD:	-	0.0%	-	0.0%	-	0.0%	-	0.0%	-	0.0%	-	-	-	-	-	0.0%
Condominium	-	0.0%	-	0.0%	-	0.0%	-	0.0%	-	0.0%	-	-	-	-	-	0.0%
YTD:	-	0.0%	-	0.0%	-	0.0%	-	0.0%	-	0.0%	-	-	-	-	-	0.0%
Existing Home																
Residential (SF/COND/TH)	1	0.0%	\$78,000	-8.2%	\$78,000	-8.2%	\$78,000	-8.2%	\$79	13.8%	43	2	5	2	6.7	87.2%
YTD:	8	33.3%	\$732,700	-22.1%	\$91,588	-41.6%	\$85,250	-43.4%	\$68	-2.0%	50	18	4	9		93.2%
Single Family	1	0.0%	\$78,000	-8.2%	\$78,000	-8.2%	\$78,000	-8.2%	\$79	13.8%	43	2	5	2	6.7	87.2%
YTD:	8	33.3%	\$732,700	-22.1%	\$91,588	-41.6%	\$85,250	-43.4%	\$68	-2.0%	50	18	4	9		93.2%
Townhouse	-	0.0%	-	0.0%	-	0.0%	-	0.0%	-	0.0%	-	-	-	-	-	0.0%
YTD:	-	0.0%	-	0.0%	-	0.0%	-	0.0%	-	0.0%	-	-	-	-	-	0.0%
Condominium	-	0.0%	-	0.0%	-	0.0%	-	0.0%	-	0.0%	-	-	-	-	-	0.0%
YTD:	-	0.0%	-	0.0%	-	0.0%	-	0.0%	-	0.0%	-	-	-	-	-	0.0%
New Construction																
Residential (SF/COND/TH)	-	0.0%	-	0.0%	-	0.0%	-	0.0%	-	0.0%	-	-	-	-	-	0.0%
YTD:	-	0.0%	-	0.0%	-	0.0%	-	0.0%	-	0.0%	-	-	-	-	-	0.0%
Single Family	-	0.0%	-	0.0%	-	0.0%	-	0.0%	-	0.0%	-	-	-	-	-	0.0%
YTD:	-	0.0%	-	0.0%	-	0.0%	-	0.0%	-	0.0%	-	-	-	-	-	0.0%
Townhouse	-	0.0%	-	0.0%	-	0.0%	-	0.0%	-	0.0%	-	-	-	-	-	0.0%
YTD:	-	0.0%	-	0.0%	-	0.0%	-	0.0%	-	0.0%	-	-	-	-	-	0.0%
Condominium	-	0.0%	-	0.0%	-	0.0%	-	0.0%	-	0.0%	-	-	-	-	-	0.0%
YTD:	-	0.0%	-	0.0%	-	0.0%	-	0.0%	-	0.0%	-	-	-	-	-	0.0%

* Local Market Area Code: 1014; Type: Census Place Group
 ** Closed Sale counts for most recent 3 months are Preliminary.

Market Analysis By Local Market Area*: Buffalo Springs

Property Type	Closed Sales**	YoY%	Dollar Volume	YoY%	Average Price	YoY%	Median Price	YoY%	Price/Sqft	YoY%	DOM	New Listings	Active Listings	Pending Sales	Months Inventory	Close To OLP
All(New and Existing)																
Residential (SF/COND/TH)	-	0.0%	-	0.0%	-	0.0%	-	0.0%	-	0.0%	-	2	4	-	4.8	0.0%
YTD:	8	-61.9%	\$2,666,000	-63.7%	\$333,250	-4.8%	\$300,000	11.1%	\$171	0.6%	95	15	3	8		96.2%
Single Family	-	0.0%	-	0.0%	-	0.0%	-	0.0%	-	0.0%	-	2	4	-	4.8	0.0%
YTD:	8	-61.9%	\$2,666,000	-63.7%	\$333,250	-4.8%	\$300,000	11.1%	\$171	0.6%	95	15	3	8		96.2%
Townhouse	-	0.0%	-	0.0%	-	0.0%	-	0.0%	-	0.0%	-	-	-	-	-	0.0%
YTD:	-	0.0%	-	0.0%	-	0.0%	-	0.0%	-	0.0%	-	-	-	-	-	0.0%
Condominium	-	0.0%	-	0.0%	-	0.0%	-	0.0%	-	0.0%	-	-	-	-	-	0.0%
YTD:	-	0.0%	-	0.0%	-	0.0%	-	0.0%	-	0.0%	-	-	-	-	-	0.0%
Existing Home																
Residential (SF/COND/TH)	-	0.0%	-	0.0%	-	0.0%	-	0.0%	-	0.0%	-	2	4	-	4.8	0.0%
YTD:	8	-61.9%	\$2,666,000	-63.7%	\$333,250	-4.8%	\$300,000	11.1%	\$171	0.6%	95	15	3	8		96.2%
Single Family	-	0.0%	-	0.0%	-	0.0%	-	0.0%	-	0.0%	-	2	4	-	4.8	0.0%
YTD:	8	-61.9%	\$2,666,000	-63.7%	\$333,250	-4.8%	\$300,000	11.1%	\$171	0.6%	95	15	3	8		96.2%
Townhouse	-	0.0%	-	0.0%	-	0.0%	-	0.0%	-	0.0%	-	-	-	-	-	0.0%
YTD:	-	0.0%	-	0.0%	-	0.0%	-	0.0%	-	0.0%	-	-	-	-	-	0.0%
Condominium	-	0.0%	-	0.0%	-	0.0%	-	0.0%	-	0.0%	-	-	-	-	-	0.0%
YTD:	-	0.0%	-	0.0%	-	0.0%	-	0.0%	-	0.0%	-	-	-	-	-	0.0%
New Construction																
Residential (SF/COND/TH)	-	0.0%	-	0.0%	-	0.0%	-	0.0%	-	0.0%	-	-	-	-	-	0.0%
YTD:	-	0.0%	-	0.0%	-	0.0%	-	0.0%	-	0.0%	-	-	-	-	-	0.0%
Single Family	-	0.0%	-	0.0%	-	0.0%	-	0.0%	-	0.0%	-	-	-	-	-	0.0%
YTD:	-	0.0%	-	0.0%	-	0.0%	-	0.0%	-	0.0%	-	-	-	-	-	0.0%
Townhouse	-	0.0%	-	0.0%	-	0.0%	-	0.0%	-	0.0%	-	-	-	-	-	0.0%
YTD:	-	0.0%	-	0.0%	-	0.0%	-	0.0%	-	0.0%	-	-	-	-	-	0.0%
Condominium	-	0.0%	-	0.0%	-	0.0%	-	0.0%	-	0.0%	-	-	-	-	-	0.0%
YTD:	-	0.0%	-	0.0%	-	0.0%	-	0.0%	-	0.0%	-	-	-	-	-	0.0%

* Local Market Area Code: 135; Type: Census Place Group
 ** Closed Sale counts for most recent 3 months are Preliminary.

Market Analysis By Local Market Area*: Idalou

Property Type	Closed Sales**	YoY%	Dollar Volume	YoY%	Average Price	YoY%	Median Price	YoY%	Price/Sqft	YoY%	DOM	New Listings	Active Listings	Pending Sales	Months Inventory	Close To OLP
All(New and Existing)																
Residential (SF/COND/TH)	-	-100.0%	-	-100.0%	-	-100.0%	-	-100.0%	-	-100.0%	-	3	8	1	8.0	0.0%
YTD:	12	-47.8%	\$3,060,750	-36.1%	\$255,063	22.5%	\$252,500	33.0%	\$131	7.2%	55	22	3	13		94.1%
Single Family	-	-100.0%	-	-100.0%	-	-100.0%	-	-100.0%	-	-100.0%	-	3	8	1	8.0	0.0%
YTD:	12	-47.8%	\$3,060,750	-36.1%	\$255,063	22.5%	\$252,500	33.0%	\$131	7.2%	55	22	3	13		94.1%
Townhouse	-	0.0%	-	0.0%	-	0.0%	-	0.0%	-	0.0%	-	-	-	-	-	0.0%
YTD:	-	0.0%	-	0.0%	-	0.0%	-	0.0%	-	0.0%	-	-	-	-	-	0.0%
Condominium	-	0.0%	-	0.0%	-	0.0%	-	0.0%	-	0.0%	-	-	-	-	-	0.0%
YTD:	-	0.0%	-	0.0%	-	0.0%	-	0.0%	-	0.0%	-	-	-	-	-	0.0%
Existing Home																
Residential (SF/COND/TH)	-	-100.0%	-	-100.0%	-	-100.0%	-	-100.0%	-	-100.0%	-	3	8	1	8.7	0.0%
YTD:	11	-52.2%	\$2,820,750	-41.1%	\$256,432	23.2%	\$265,000	39.6%	\$126	2.9%	49	21	3	12		93.7%
Single Family	-	-100.0%	-	-100.0%	-	-100.0%	-	-100.0%	-	-100.0%	-	3	8	1	8.7	0.0%
YTD:	11	-52.2%	\$2,820,750	-41.1%	\$256,432	23.2%	\$265,000	39.6%	\$126	2.9%	49	21	3	12		93.7%
Townhouse	-	0.0%	-	0.0%	-	0.0%	-	0.0%	-	0.0%	-	-	-	-	-	0.0%
YTD:	-	0.0%	-	0.0%	-	0.0%	-	0.0%	-	0.0%	-	-	-	-	-	0.0%
Condominium	-	0.0%	-	0.0%	-	0.0%	-	0.0%	-	0.0%	-	-	-	-	-	0.0%
YTD:	-	0.0%	-	0.0%	-	0.0%	-	0.0%	-	0.0%	-	-	-	-	-	0.0%
New Construction																
Residential (SF/COND/TH)	-	0.0%	-	0.0%	-	0.0%	-	0.0%	-	0.0%	-	-	-	-	-	0.0%
YTD:	1	100.0%	\$240,000	100.0%	\$240,000	100.0%	\$240,000	100.0%	\$188	100.0%	117	1	-	1		98.0%
Single Family	-	0.0%	-	0.0%	-	0.0%	-	0.0%	-	0.0%	-	-	-	-	-	0.0%
YTD:	1	100.0%	\$240,000	100.0%	\$240,000	100.0%	\$240,000	100.0%	\$188	100.0%	117	1	-	1		98.0%
Townhouse	-	0.0%	-	0.0%	-	0.0%	-	0.0%	-	0.0%	-	-	-	-	-	0.0%
YTD:	-	0.0%	-	0.0%	-	0.0%	-	0.0%	-	0.0%	-	-	-	-	-	0.0%
Condominium	-	0.0%	-	0.0%	-	0.0%	-	0.0%	-	0.0%	-	-	-	-	-	0.0%
YTD:	-	0.0%	-	0.0%	-	0.0%	-	0.0%	-	0.0%	-	-	-	-	-	0.0%

* Local Market Area Code: 456; Type: Census Place Group
 ** Closed Sale counts for most recent 3 months are Preliminary.

Market Analysis By Local Market Area*: Levelland

Property Type	Closed Sales**	YoY%	Dollar Volume	YoY%	Average Price	YoY%	Median Price	YoY%	Price/Sqft	YoY%	DOM	New Listings	Active Listings	Pending Sales	Months Inventory	Close To OLP
All(New and Existing)																
Residential (SF/COND/TH)	8	60.0%	\$1,520,400	60.1%	\$190,050	0.0%	\$203,450	-7.5%	\$101	12.3%	44	7	43	4	4.2	93.5%
YTD:	112	2.8%	\$21,761,100	7.8%	\$194,296	4.9%	\$189,950	5.5%	\$99	6.5%	52	198	38	118		94.9%
Single Family	8	60.0%	\$1,520,400	60.1%	\$190,050	0.0%	\$203,450	-7.5%	\$101	12.3%	44	7	42	4	4.1	93.5%
YTD:	112	3.7%	\$21,761,100	8.8%	\$194,296	4.9%	\$189,950	6.3%	\$99	6.6%	52	197	38	118		94.9%
Townhouse	-	0.0%	-	0.0%	-	0.0%	-	0.0%	-	0.0%	-	-	-	-	-	0.0%
YTD:	-	-100.0%	-	-100.0%	-	-100.0%	-	-100.0%	-	-100.0%	-	-	-	-	-	0.0%
Condominium	-	0.0%	-	0.0%	-	0.0%	-	0.0%	-	0.0%	-	-	1	-	-	0.0%
YTD:	-	0.0%	-	0.0%	-	0.0%	-	0.0%	-	0.0%	-	1	1	-	-	0.0%
Existing Home																
Residential (SF/COND/TH)	8	60.0%	\$1,520,400	60.1%	\$190,050	0.0%	\$203,450	-7.5%	\$101	12.3%	44	7	42	4	4.1	93.5%
YTD:	112	2.8%	\$21,761,100	7.8%	\$194,296	4.9%	\$189,950	5.5%	\$99	6.5%	52	195	37	118		94.9%
Single Family	8	60.0%	\$1,520,400	60.1%	\$190,050	0.0%	\$203,450	-7.5%	\$101	12.3%	44	7	41	4	4.0	93.5%
YTD:	112	3.7%	\$21,761,100	8.8%	\$194,296	4.9%	\$189,950	6.3%	\$99	6.6%	52	194	37	118		94.9%
Townhouse	-	0.0%	-	0.0%	-	0.0%	-	0.0%	-	0.0%	-	-	-	-	-	0.0%
YTD:	-	-100.0%	-	-100.0%	-	-100.0%	-	-100.0%	-	-100.0%	-	-	-	-	-	0.0%
Condominium	-	0.0%	-	0.0%	-	0.0%	-	0.0%	-	0.0%	-	-	1	-	-	0.0%
YTD:	-	0.0%	-	0.0%	-	0.0%	-	0.0%	-	0.0%	-	1	1	-	-	0.0%
New Construction																
Residential (SF/COND/TH)	-	0.0%	-	0.0%	-	0.0%	-	0.0%	-	0.0%	-	-	1	-	-	0.0%
YTD:	-	0.0%	-	0.0%	-	0.0%	-	0.0%	-	0.0%	-	3	1	-	-	0.0%
Single Family	-	0.0%	-	0.0%	-	0.0%	-	0.0%	-	0.0%	-	-	1	-	-	0.0%
YTD:	-	0.0%	-	0.0%	-	0.0%	-	0.0%	-	0.0%	-	3	1	-	-	0.0%
Townhouse	-	0.0%	-	0.0%	-	0.0%	-	0.0%	-	0.0%	-	-	-	-	-	0.0%
YTD:	-	0.0%	-	0.0%	-	0.0%	-	0.0%	-	0.0%	-	-	-	-	-	0.0%
Condominium	-	0.0%	-	0.0%	-	0.0%	-	0.0%	-	0.0%	-	-	-	-	-	0.0%
YTD:	-	0.0%	-	0.0%	-	0.0%	-	0.0%	-	0.0%	-	-	-	-	-	0.0%

* Local Market Area Code: 220; Type: Census Place Group
 ** Closed Sale counts for most recent 3 months are Preliminary.

Market Analysis By Local Market Area*: Lubbock

Property Type	Closed Sales**	YoY%	Dollar Volume	YoY%	Average Price	YoY%	Median Price	YoY%	Price/Sqft	YoY%	DOM	New Listings	Active Listings	Pending Sales	Months Inventory	Close To OLP
All(New and Existing)																
Residential (SF/COND/TH)	203	-6.0%	\$53,121,882	-6.7%	\$261,684	-0.7%	\$230,000	7.0%	\$132	2.1%	46	358	921	223	3.3	94.4%
YTD:	3,122	-6.0%	\$813,915,218	-6.4%	\$260,703	-0.5%	\$228,725	1.7%	\$132	1.7%	33	5,282	716	3,175		96.7%
Single Family	200	-4.8%	\$52,572,675	-5.9%	\$262,863	-1.1%	\$230,495	6.0%	\$132	2.4%	47	351	874	220	3.3	94.4%
YTD:	3,020	-6.4%	\$791,726,754	-7.1%	\$262,161	-0.7%	\$230,000	1.3%	\$132	1.7%	33	5,064	675	3,079		96.7%
Townhouse	2	-50.0%	\$471,000	-44.9%	\$235,500	10.2%	\$235,500	32.7%	\$155	3.2%	2	5	43	1	5.8	99.8%
YTD:	83	25.8%	\$17,004,876	28.0%	\$204,878	1.8%	\$199,900	3.8%	\$134	3.7%	42	191	37	77		95.7%
Condominium	1	-50.0%	\$90,000	-58.2%	\$90,000	-16.5%	\$90,000	-16.5%	\$72	-35.3%	13	2	4	2	2.2	90.9%
YTD:	19	-32.1%	\$5,204,000	16.2%	\$273,895	71.3%	\$220,000	66.7%	\$129	-0.4%	18	27	3	19		96.6%
Existing Home																
Residential (SF/COND/TH)	173	-12.2%	\$43,167,594	-15.2%	\$249,524	-3.4%	\$219,500	3.5%	\$127	1.1%	45	305	730	185	3.0	93.7%
YTD:	2,693	-9.4%	\$666,712,710	-10.4%	\$247,572	-1.1%	\$217,000	0.2%	\$127	1.6%	29	4,359	526	2,724		96.5%
Single Family	170	-11.5%	\$42,615,857	-14.8%	\$250,682	-3.7%	\$219,750	3.5%	\$127	1.3%	46	299	709	182	3.0	93.6%
YTD:	2,630	-9.2%	\$652,604,994	-10.7%	\$248,139	-1.6%	\$219,000	0.4%	\$127	1.5%	29	4,262	512	2,667		96.5%
Townhouse	2	-33.3%	\$471,000	-31.7%	\$235,500	2.4%	\$235,500	24.0%	\$155	2.3%	2	4	18	1	4.6	99.8%
YTD:	44	-8.3%	\$8,909,946	-5.6%	\$202,499	3.0%	\$191,000	-0.8%	\$128	4.2%	34	71	10	38		97.8%
Condominium	1	-50.0%	\$90,000	-58.2%	\$90,000	-16.5%	\$90,000	-16.5%	\$72	-35.3%	13	2	3	2	1.6	90.9%
YTD:	19	-32.1%	\$5,204,000	16.2%	\$273,895	71.3%	\$220,000	66.7%	\$129	-0.4%	18	26	3	19		96.6%
New Construction																
Residential (SF/COND/TH)	29	52.6%	\$9,666,980	60.6%	\$333,344	5.3%	\$325,995	3.4%	\$162	-2.8%	52	53	191	38	5.1	98.8%
YTD:	427	22.4%	\$146,619,332	16.7%	\$343,371	-4.6%	\$300,213	-3.5%	\$165	-4.1%	59	923	189	451		97.6%
Single Family	29	61.1%	\$9,666,980	65.2%	\$333,344	2.5%	\$325,995	2.6%	\$162	-3.5%	52	52	165	38	4.8	98.8%
YTD:	388	17.2%	\$138,538,088	13.8%	\$357,057	-3.0%	\$315,500	-0.2%	\$168	-3.5%	60	802	163	412		98.0%
Townhouse	-	-100.0%	-	-100.0%	-	-100.0%	-	-100.0%	-	-100.0%	-	1	25	-	7.1	0.0%
YTD:	39	116.7%	\$8,094,930	110.8%	\$207,562	-2.7%	\$199,900	3.8%	\$140	-3.4%	52	120	26	39		93.3%
Condominium	-	0.0%	-	0.0%	-	0.0%	-	0.0%	-	0.0%	-	-	1	-	-	0.0%
YTD:	-	0.0%	-	0.0%	-	0.0%	-	0.0%	-	0.0%	-	1	1	-	-	0.0%

* Local Market Area Code: 596; Type: Census Place Group
 ** Closed Sale counts for most recent 3 months are Preliminary.

Market Analysis By Local Market Area*: New Deal

Property Type	Closed Sales**	YoY%	Dollar Volume	YoY%	Average Price	YoY%	Median Price	YoY%	Price/Sqft	YoY%	DOM	New Listings	Active Listings	Pending Sales	Months Inventory	Close To OLP
All(New and Existing)																
Residential (SF/COND/TH)	1	100.0%	\$187,000	100.0%	\$187,000	100.0%	\$187,000	100.0%	\$113	100.0%	16	1	1	1	3.0	95.7%
YTD:	4	0.0%	\$819,800	46.1%	\$204,950	46.1%	\$190,950	34.0%	\$105	14.1%	49	6	1	5		93.7%
Single Family	1	100.0%	\$187,000	100.0%	\$187,000	100.0%	\$187,000	100.0%	\$113	100.0%	16	1	1	1	3.0	95.7%
YTD:	4	0.0%	\$819,800	46.1%	\$204,950	46.1%	\$190,950	34.0%	\$105	14.1%	49	6	1	5		93.7%
Townhouse	-	0.0%	-	0.0%	-	0.0%	-	0.0%	-	0.0%	-	-	-	-	-	0.0%
YTD:	-	0.0%	-	0.0%	-	0.0%	-	0.0%	-	0.0%	-	-	-	-	-	0.0%
Condominium	-	0.0%	-	0.0%	-	0.0%	-	0.0%	-	0.0%	-	-	-	-	-	0.0%
YTD:	-	0.0%	-	0.0%	-	0.0%	-	0.0%	-	0.0%	-	-	-	-	-	0.0%
Existing Home																
Residential (SF/COND/TH)	1	100.0%	\$187,000	100.0%	\$187,000	100.0%	\$187,000	100.0%	\$113	100.0%	16	1	1	1	3.0	95.7%
YTD:	4	0.0%	\$819,800	46.1%	\$204,950	46.1%	\$190,950	34.0%	\$105	14.1%	49	6	1	5		93.7%
Single Family	1	100.0%	\$187,000	100.0%	\$187,000	100.0%	\$187,000	100.0%	\$113	100.0%	16	1	1	1	3.0	95.7%
YTD:	4	0.0%	\$819,800	46.1%	\$204,950	46.1%	\$190,950	34.0%	\$105	14.1%	49	6	1	5		93.7%
Townhouse	-	0.0%	-	0.0%	-	0.0%	-	0.0%	-	0.0%	-	-	-	-	-	0.0%
YTD:	-	0.0%	-	0.0%	-	0.0%	-	0.0%	-	0.0%	-	-	-	-	-	0.0%
Condominium	-	0.0%	-	0.0%	-	0.0%	-	0.0%	-	0.0%	-	-	-	-	-	0.0%
YTD:	-	0.0%	-	0.0%	-	0.0%	-	0.0%	-	0.0%	-	-	-	-	-	0.0%
New Construction																
Residential (SF/COND/TH)	-	0.0%	-	0.0%	-	0.0%	-	0.0%	-	0.0%	-	-	-	-	-	0.0%
YTD:	-	0.0%	-	0.0%	-	0.0%	-	0.0%	-	0.0%	-	-	-	-	-	0.0%
Single Family	-	0.0%	-	0.0%	-	0.0%	-	0.0%	-	0.0%	-	-	-	-	-	0.0%
YTD:	-	0.0%	-	0.0%	-	0.0%	-	0.0%	-	0.0%	-	-	-	-	-	0.0%
Townhouse	-	0.0%	-	0.0%	-	0.0%	-	0.0%	-	0.0%	-	-	-	-	-	0.0%
YTD:	-	0.0%	-	0.0%	-	0.0%	-	0.0%	-	0.0%	-	-	-	-	-	0.0%
Condominium	-	0.0%	-	0.0%	-	0.0%	-	0.0%	-	0.0%	-	-	-	-	-	0.0%
YTD:	-	0.0%	-	0.0%	-	0.0%	-	0.0%	-	0.0%	-	-	-	-	-	0.0%

* Local Market Area Code: 700; Type: Census Place Group
 ** Closed Sale counts for most recent 3 months are Preliminary.

Market Analysis By Local Market Area*: Ransom Canyon

Property Type	Closed Sales**	YoY%	Dollar Volume	YoY%	Average Price	YoY%	Median Price	YoY%	Price/Sqft	YoY%	DOM	New Listings	Active Listings	Pending Sales	Months Inventory	Close To OLP
All(New and Existing)																
Residential (SF/COND/TH)	3	200.0%	\$1,382,000	235.0%	\$460,667	11.7%	\$380,000	-7.9%	\$191	13.9%	28	2	9	4	5.1	93.3%
YTD:	20	-4.8%	\$8,610,500	-0.3%	\$430,525	4.7%	\$379,500	-8.0%	\$169	5.7%	50	37	6	25		93.8%
Single Family	3	200.0%	\$1,382,000	235.0%	\$460,667	11.7%	\$380,000	-7.9%	\$191	13.9%	28	2	9	4	5.1	93.3%
YTD:	20	-4.8%	\$8,610,500	-0.3%	\$430,525	4.7%	\$379,500	-8.0%	\$169	5.7%	50	37	6	25		93.8%
Townhouse	-	0.0%	-	0.0%	-	0.0%	-	0.0%	-	0.0%	-	-	-	-	-	0.0%
YTD:	-	0.0%	-	0.0%	-	0.0%	-	0.0%	-	0.0%	-	-	-	-	-	0.0%
Condominium	-	0.0%	-	0.0%	-	0.0%	-	0.0%	-	0.0%	-	-	-	-	-	0.0%
YTD:	-	0.0%	-	0.0%	-	0.0%	-	0.0%	-	0.0%	-	-	-	-	-	0.0%
Existing Home																
Residential (SF/COND/TH)	3	200.0%	\$1,382,000	235.0%	\$460,667	11.7%	\$380,000	-7.9%	\$191	13.9%	28	2	9	4	5.4	93.3%
YTD:	19	-5.0%	\$8,240,500	0.5%	\$433,711	5.8%	\$380,000	-7.6%	\$169	5.8%	36	37	6	24		96.4%
Single Family	3	200.0%	\$1,382,000	235.0%	\$460,667	11.7%	\$380,000	-7.9%	\$191	13.9%	28	2	9	4	5.4	93.3%
YTD:	19	-5.0%	\$8,240,500	0.5%	\$433,711	5.8%	\$380,000	-7.6%	\$169	5.8%	36	37	6	24		96.4%
Townhouse	-	0.0%	-	0.0%	-	0.0%	-	0.0%	-	0.0%	-	-	-	-	-	0.0%
YTD:	-	0.0%	-	0.0%	-	0.0%	-	0.0%	-	0.0%	-	-	-	-	-	0.0%
Condominium	-	0.0%	-	0.0%	-	0.0%	-	0.0%	-	0.0%	-	-	-	-	-	0.0%
YTD:	-	0.0%	-	0.0%	-	0.0%	-	0.0%	-	0.0%	-	-	-	-	-	0.0%
New Construction																
Residential (SF/COND/TH)	-	0.0%	-	0.0%	-	0.0%	-	0.0%	-	0.0%	-	-	-	-	-	0.0%
YTD:	1	0.0%	\$370,000	-15.0%	\$370,000	-15.0%	\$370,000	-15.0%	\$173	2.5%	309	-	1	1		44.6%
Single Family	-	0.0%	-	0.0%	-	0.0%	-	0.0%	-	0.0%	-	-	-	-	-	0.0%
YTD:	1	0.0%	\$370,000	-15.0%	\$370,000	-15.0%	\$370,000	-15.0%	\$173	2.5%	309	-	1	1		44.6%
Townhouse	-	0.0%	-	0.0%	-	0.0%	-	0.0%	-	0.0%	-	-	-	-	-	0.0%
YTD:	-	0.0%	-	0.0%	-	0.0%	-	0.0%	-	0.0%	-	-	-	-	-	0.0%
Condominium	-	0.0%	-	0.0%	-	0.0%	-	0.0%	-	0.0%	-	-	-	-	-	0.0%
YTD:	-	0.0%	-	0.0%	-	0.0%	-	0.0%	-	0.0%	-	-	-	-	-	0.0%

* Local Market Area Code: 826; Type: Census Place Group
 ** Closed Sale counts for most recent 3 months are Preliminary.

Market Analysis By Local Market Area*: Ropesville

Property Type	Closed Sales**	YoY%	Dollar Volume	YoY%	Average Price	YoY%	Median Price	YoY%	Price/Sqft	YoY%	DOM	New Listings	Active Listings	Pending Sales	Months Inventory	Close To OLP
All(New and Existing)																
Residential (SF/COND/TH)	1	100.0%	\$260,000	100.0%	\$260,000	100.0%	\$260,000	100.0%	\$141	100.0%	6	-	-	-	-	100.0%
YTD:	4	33.3%	\$1,018,000	151.4%	\$254,500	88.5%	\$242,500	47.0%	\$134	53.9%	75	3	1	4	-	98.3%
Single Family	1	100.0%	\$260,000	100.0%	\$260,000	100.0%	\$260,000	100.0%	\$141	100.0%	6	-	-	-	-	100.0%
YTD:	4	33.3%	\$1,018,000	151.4%	\$254,500	88.5%	\$242,500	47.0%	\$134	53.9%	75	3	1	4	-	98.3%
Townhouse	-	0.0%	-	0.0%	-	0.0%	-	0.0%	-	0.0%	-	-	-	-	-	0.0%
YTD:	-	0.0%	-	0.0%	-	0.0%	-	0.0%	-	0.0%	-	-	-	-	-	0.0%
Condominium	-	0.0%	-	0.0%	-	0.0%	-	0.0%	-	0.0%	-	-	-	-	-	0.0%
YTD:	-	0.0%	-	0.0%	-	0.0%	-	0.0%	-	0.0%	-	-	-	-	-	0.0%
Existing Home																
Residential (SF/COND/TH)	1	100.0%	\$260,000	100.0%	\$260,000	100.0%	\$260,000	100.0%	\$141	100.0%	6	-	-	-	-	100.0%
YTD:	3	0.0%	\$553,000	36.5%	\$184,333	36.5%	\$225,000	36.4%	\$117	34.5%	24	3	-	3	-	96.7%
Single Family	1	100.0%	\$260,000	100.0%	\$260,000	100.0%	\$260,000	100.0%	\$141	100.0%	6	-	-	-	-	100.0%
YTD:	3	0.0%	\$553,000	36.5%	\$184,333	36.5%	\$225,000	36.4%	\$117	34.5%	24	3	-	3	-	96.7%
Townhouse	-	0.0%	-	0.0%	-	0.0%	-	0.0%	-	0.0%	-	-	-	-	-	0.0%
YTD:	-	0.0%	-	0.0%	-	0.0%	-	0.0%	-	0.0%	-	-	-	-	-	0.0%
Condominium	-	0.0%	-	0.0%	-	0.0%	-	0.0%	-	0.0%	-	-	-	-	-	0.0%
YTD:	-	0.0%	-	0.0%	-	0.0%	-	0.0%	-	0.0%	-	-	-	-	-	0.0%
New Construction																
Residential (SF/COND/TH)	-	0.0%	-	0.0%	-	0.0%	-	0.0%	-	0.0%	-	-	-	-	-	0.0%
YTD:	1	100.0%	\$465,000	100.0%	\$465,000	100.0%	\$465,000	100.0%	\$185	100.0%	231	-	1	1	-	103.3%
Single Family	-	0.0%	-	0.0%	-	0.0%	-	0.0%	-	0.0%	-	-	-	-	-	0.0%
YTD:	1	100.0%	\$465,000	100.0%	\$465,000	100.0%	\$465,000	100.0%	\$185	100.0%	231	-	1	1	-	103.3%
Townhouse	-	0.0%	-	0.0%	-	0.0%	-	0.0%	-	0.0%	-	-	-	-	-	0.0%
YTD:	-	0.0%	-	0.0%	-	0.0%	-	0.0%	-	0.0%	-	-	-	-	-	0.0%
Condominium	-	0.0%	-	0.0%	-	0.0%	-	0.0%	-	0.0%	-	-	-	-	-	0.0%
YTD:	-	0.0%	-	0.0%	-	0.0%	-	0.0%	-	0.0%	-	-	-	-	-	0.0%

* Local Market Area Code: 222; Type: Census Place Group
 ** Closed Sale counts for most recent 3 months are Preliminary.

Market Analysis By Local Market Area*: Shallowater

Property Type	Closed Sales**	YoY%	Dollar Volume	YoY%	Average Price	YoY%	Median Price	YoY%	Price/Sqft	YoY%	DOM	New Listings	Active Listings	Pending Sales	Months Inventory	Close To OLP
All(New and Existing)																
Residential (SF/COND/TH)	1	100.0%	\$265,000	100.0%	\$265,000	100.0%	\$265,000	100.0%	\$130	100.0%	270	6	16	2	6.6	81.5%
YTD:	25	-51.0%	\$8,339,534	-48.2%	\$333,581	5.8%	\$318,500	7.1%	\$143	0.8%	75	58	12	26		95.6%
Single Family	1	100.0%	\$265,000	100.0%	\$265,000	100.0%	\$265,000	100.0%	\$130	100.0%	270	6	16	2	6.6	81.5%
YTD:	25	-51.0%	\$8,339,534	-48.2%	\$333,581	5.8%	\$318,500	7.1%	\$143	0.8%	75	58	12	26		95.6%
Townhouse	-	0.0%	-	0.0%	-	0.0%	-	0.0%	-	0.0%	-	-	-	-	-	0.0%
YTD:	-	0.0%	-	0.0%	-	0.0%	-	0.0%	-	0.0%	-	-	-	-	-	0.0%
Condominium	-	0.0%	-	0.0%	-	0.0%	-	0.0%	-	0.0%	-	-	-	-	-	0.0%
YTD:	-	0.0%	-	0.0%	-	0.0%	-	0.0%	-	0.0%	-	-	-	-	-	0.0%
Existing Home																
Residential (SF/COND/TH)	1	100.0%	\$265,000	100.0%	\$265,000	100.0%	\$265,000	100.0%	\$130	100.0%	270	6	11	2	5.7	81.5%
YTD:	19	-52.5%	\$6,158,750	-47.1%	\$324,145	11.3%	\$295,000	16.8%	\$134	1.0%	55	46	6	20		95.6%
Single Family	1	100.0%	\$265,000	100.0%	\$265,000	100.0%	\$265,000	100.0%	\$130	100.0%	270	6	11	2	5.7	81.5%
YTD:	19	-52.5%	\$6,158,750	-47.1%	\$324,145	11.3%	\$295,000	16.8%	\$134	1.0%	55	46	6	20		95.6%
Townhouse	-	0.0%	-	0.0%	-	0.0%	-	0.0%	-	0.0%	-	-	-	-	-	0.0%
YTD:	-	0.0%	-	0.0%	-	0.0%	-	0.0%	-	0.0%	-	-	-	-	-	0.0%
Condominium	-	0.0%	-	0.0%	-	0.0%	-	0.0%	-	0.0%	-	-	-	-	-	0.0%
YTD:	-	0.0%	-	0.0%	-	0.0%	-	0.0%	-	0.0%	-	-	-	-	-	0.0%
New Construction																
Residential (SF/COND/TH)	-	0.0%	-	0.0%	-	0.0%	-	0.0%	-	0.0%	-	-	5	-	10.0	0.0%
YTD:	6	-45.5%	\$2,180,784	-50.9%	\$363,464	-9.9%	\$360,000	-16.1%	\$170	-2.1%	141	12	5	6		95.6%
Single Family	-	0.0%	-	0.0%	-	0.0%	-	0.0%	-	0.0%	-	-	5	-	10.0	0.0%
YTD:	6	-45.5%	\$2,180,784	-50.9%	\$363,464	-9.9%	\$360,000	-16.1%	\$170	-2.1%	141	12	5	6		95.6%
Townhouse	-	0.0%	-	0.0%	-	0.0%	-	0.0%	-	0.0%	-	-	-	-	-	0.0%
YTD:	-	0.0%	-	0.0%	-	0.0%	-	0.0%	-	0.0%	-	-	-	-	-	0.0%
Condominium	-	0.0%	-	0.0%	-	0.0%	-	0.0%	-	0.0%	-	-	-	-	-	0.0%
YTD:	-	0.0%	-	0.0%	-	0.0%	-	0.0%	-	0.0%	-	-	-	-	-	0.0%

* Local Market Area Code: 925; Type: Census Place Group
 ** Closed Sale counts for most recent 3 months are Preliminary.

Market Analysis By Local Market Area*: Slaton

Property Type	Closed Sales**	YoY%	Dollar Volume	YoY%	Average Price	YoY%	Median Price	YoY%	Price/Sqft	YoY%	DOM	New Listings	Active Listings	Pending Sales	Months Inventory	Close To OLP
All(New and Existing)																
Residential (SF/COND/TH)	3	200.0%	\$287,500	64.3%	\$95,833	-45.2%	\$65,000	-62.9%	\$64	-35.0%	47	6	24	4	5.3	97.9%
YTD:	49	14.0%	\$6,805,778	18.0%	\$138,893	3.6%	\$140,000	12.9%	\$83	-5.6%	37	98	18	50		89.8%
Single Family	3	200.0%	\$287,500	64.3%	\$95,833	-45.2%	\$65,000	-62.9%	\$64	-35.0%	47	6	24	4	5.3	97.9%
YTD:	49	14.0%	\$6,805,778	18.0%	\$138,893	3.6%	\$140,000	12.9%	\$83	-5.6%	37	97	18	50		89.8%
Townhouse	-	0.0%	-	0.0%	-	0.0%	-	0.0%	-	0.0%	-	-	-	-	-	0.0%
YTD:	-	0.0%	-	0.0%	-	0.0%	-	0.0%	-	0.0%	-	-	-	-	-	0.0%
Condominium	-	0.0%	-	0.0%	-	0.0%	-	0.0%	-	0.0%	-	-	-	-	-	0.0%
YTD:	-	0.0%	-	0.0%	-	0.0%	-	0.0%	-	0.0%	-	1	1	-	-	0.0%
Existing Home																
Residential (SF/COND/TH)	3	200.0%	\$287,500	64.3%	\$95,833	-45.2%	\$65,000	-62.9%	\$64	-35.0%	47	6	22	4	5.0	97.9%
YTD:	49	14.0%	\$6,805,778	18.0%	\$138,893	3.6%	\$140,000	12.9%	\$83	-5.6%	37	96	16	50		89.8%
Single Family	3	200.0%	\$287,500	64.3%	\$95,833	-45.2%	\$65,000	-62.9%	\$64	-35.0%	47	6	22	4	5.0	97.9%
YTD:	49	14.0%	\$6,805,778	18.0%	\$138,893	3.6%	\$140,000	12.9%	\$83	-5.6%	37	95	16	50		89.8%
Townhouse	-	0.0%	-	0.0%	-	0.0%	-	0.0%	-	0.0%	-	-	-	-	-	0.0%
YTD:	-	0.0%	-	0.0%	-	0.0%	-	0.0%	-	0.0%	-	-	-	-	-	0.0%
Condominium	-	0.0%	-	0.0%	-	0.0%	-	0.0%	-	0.0%	-	-	-	-	-	0.0%
YTD:	-	0.0%	-	0.0%	-	0.0%	-	0.0%	-	0.0%	-	1	1	-	-	0.0%
New Construction																
Residential (SF/COND/TH)	-	0.0%	-	0.0%	-	0.0%	-	0.0%	-	0.0%	-	-	2	-	24.0	0.0%
YTD:	-	0.0%	-	0.0%	-	0.0%	-	0.0%	-	0.0%	-	2	2	-	-	0.0%
Single Family	-	0.0%	-	0.0%	-	0.0%	-	0.0%	-	0.0%	-	-	2	-	24.0	0.0%
YTD:	-	0.0%	-	0.0%	-	0.0%	-	0.0%	-	0.0%	-	2	2	-	-	0.0%
Townhouse	-	0.0%	-	0.0%	-	0.0%	-	0.0%	-	0.0%	-	-	-	-	-	0.0%
YTD:	-	0.0%	-	0.0%	-	0.0%	-	0.0%	-	0.0%	-	-	-	-	-	0.0%
Condominium	-	0.0%	-	0.0%	-	0.0%	-	0.0%	-	0.0%	-	-	-	-	-	0.0%
YTD:	-	0.0%	-	0.0%	-	0.0%	-	0.0%	-	0.0%	-	-	-	-	-	0.0%

* Local Market Area Code: 935; Type: Census Place Group
 ** Closed Sale counts for most recent 3 months are Preliminary.

Market Analysis By Local Market Area*: Smyer

Property Type	Closed Sales**	YoY%	Dollar Volume	YoY%	Average Price	YoY%	Median Price	YoY%	Price/Sqft	YoY%	DOM	New Listings	Active Listings	Pending Sales	Months Inventory	Close To OLP
All(New and Existing)																
Residential (SF/COND/TH)	-	0.0%	-	0.0%	-	0.0%	-	0.0%	-	0.0%	-	-	-	-	-	0.0%
YTD:	-	0.0%	-	0.0%	-	0.0%	-	0.0%	-	0.0%	-	-	-	-	-	0.0%
Single Family	-	0.0%	-	0.0%	-	0.0%	-	0.0%	-	0.0%	-	-	-	-	-	0.0%
YTD:	-	0.0%	-	0.0%	-	0.0%	-	0.0%	-	0.0%	-	-	-	-	-	0.0%
Townhouse	-	0.0%	-	0.0%	-	0.0%	-	0.0%	-	0.0%	-	-	-	-	-	0.0%
YTD:	-	0.0%	-	0.0%	-	0.0%	-	0.0%	-	0.0%	-	-	-	-	-	0.0%
Condominium	-	0.0%	-	0.0%	-	0.0%	-	0.0%	-	0.0%	-	-	-	-	-	0.0%
YTD:	-	0.0%	-	0.0%	-	0.0%	-	0.0%	-	0.0%	-	-	-	-	-	0.0%
Existing Home																
Residential (SF/COND/TH)	-	0.0%	-	0.0%	-	0.0%	-	0.0%	-	0.0%	-	-	-	-	-	0.0%
YTD:	-	0.0%	-	0.0%	-	0.0%	-	0.0%	-	0.0%	-	-	-	-	-	0.0%
Single Family	-	0.0%	-	0.0%	-	0.0%	-	0.0%	-	0.0%	-	-	-	-	-	0.0%
YTD:	-	0.0%	-	0.0%	-	0.0%	-	0.0%	-	0.0%	-	-	-	-	-	0.0%
Townhouse	-	0.0%	-	0.0%	-	0.0%	-	0.0%	-	0.0%	-	-	-	-	-	0.0%
YTD:	-	0.0%	-	0.0%	-	0.0%	-	0.0%	-	0.0%	-	-	-	-	-	0.0%
Condominium	-	0.0%	-	0.0%	-	0.0%	-	0.0%	-	0.0%	-	-	-	-	-	0.0%
YTD:	-	0.0%	-	0.0%	-	0.0%	-	0.0%	-	0.0%	-	-	-	-	-	0.0%
New Construction																
Residential (SF/COND/TH)	-	0.0%	-	0.0%	-	0.0%	-	0.0%	-	0.0%	-	-	-	-	-	0.0%
YTD:	-	0.0%	-	0.0%	-	0.0%	-	0.0%	-	0.0%	-	-	-	-	-	0.0%
Single Family	-	0.0%	-	0.0%	-	0.0%	-	0.0%	-	0.0%	-	-	-	-	-	0.0%
YTD:	-	0.0%	-	0.0%	-	0.0%	-	0.0%	-	0.0%	-	-	-	-	-	0.0%
Townhouse	-	0.0%	-	0.0%	-	0.0%	-	0.0%	-	0.0%	-	-	-	-	-	0.0%
YTD:	-	0.0%	-	0.0%	-	0.0%	-	0.0%	-	0.0%	-	-	-	-	-	0.0%
Condominium	-	0.0%	-	0.0%	-	0.0%	-	0.0%	-	0.0%	-	-	-	-	-	0.0%
YTD:	-	0.0%	-	0.0%	-	0.0%	-	0.0%	-	0.0%	-	-	-	-	-	0.0%

* Local Market Area Code: 491; Type: Census Place Group
 ** Closed Sale counts for most recent 3 months are Preliminary.

Market Analysis By Local Market Area*: Sundown

Property Type	Closed Sales**	YoY%	Dollar Volume	YoY%	Average Price	YoY%	Median Price	YoY%	Price/Sqft	YoY%	DOM	New Listings	Active Listings	Pending Sales	Months Inventory	Close To OLP
All(New and Existing)																
Residential (SF/COND/TH)	1	100.0%	\$174,900	100.0%	\$174,900	100.0%	\$174,900	100.0%	\$98	100.0%	19	-	1	-	3.0	100.0%
YTD:	4	-20.0%	\$881,300	1.5%	\$220,325	26.9%	\$177,400	7.5%	\$105	32.5%	48	7	1	4		99.3%
Single Family	1	100.0%	\$174,900	100.0%	\$174,900	100.0%	\$174,900	100.0%	\$98	100.0%	19	-	1	-	3.0	100.0%
YTD:	4	-20.0%	\$881,300	1.5%	\$220,325	26.9%	\$177,400	7.5%	\$105	32.5%	48	7	1	4		99.3%
Townhouse	-	0.0%	-	0.0%	-	0.0%	-	0.0%	-	0.0%	-	-	-	-	-	0.0%
YTD:	-	0.0%	-	0.0%	-	0.0%	-	0.0%	-	0.0%	-	-	-	-	-	0.0%
Condominium	-	0.0%	-	0.0%	-	0.0%	-	0.0%	-	0.0%	-	-	-	-	-	0.0%
YTD:	-	0.0%	-	0.0%	-	0.0%	-	0.0%	-	0.0%	-	-	-	-	-	0.0%
Existing Home																
Residential (SF/COND/TH)	1	100.0%	\$174,900	100.0%	\$174,900	100.0%	\$174,900	100.0%	\$98	100.0%	19	-	1	-	3.0	100.0%
YTD:	4	-20.0%	\$881,300	1.5%	\$220,325	26.9%	\$177,400	7.5%	\$105	32.5%	48	7	1	4		99.3%
Single Family	1	100.0%	\$174,900	100.0%	\$174,900	100.0%	\$174,900	100.0%	\$98	100.0%	19	-	1	-	3.0	100.0%
YTD:	4	-20.0%	\$881,300	1.5%	\$220,325	26.9%	\$177,400	7.5%	\$105	32.5%	48	7	1	4		99.3%
Townhouse	-	0.0%	-	0.0%	-	0.0%	-	0.0%	-	0.0%	-	-	-	-	-	0.0%
YTD:	-	0.0%	-	0.0%	-	0.0%	-	0.0%	-	0.0%	-	-	-	-	-	0.0%
Condominium	-	0.0%	-	0.0%	-	0.0%	-	0.0%	-	0.0%	-	-	-	-	-	0.0%
YTD:	-	0.0%	-	0.0%	-	0.0%	-	0.0%	-	0.0%	-	-	-	-	-	0.0%
New Construction																
Residential (SF/COND/TH)	-	0.0%	-	0.0%	-	0.0%	-	0.0%	-	0.0%	-	-	-	-	-	0.0%
YTD:	-	0.0%	-	0.0%	-	0.0%	-	0.0%	-	0.0%	-	-	-	-	-	0.0%
Single Family	-	0.0%	-	0.0%	-	0.0%	-	0.0%	-	0.0%	-	-	-	-	-	0.0%
YTD:	-	0.0%	-	0.0%	-	0.0%	-	0.0%	-	0.0%	-	-	-	-	-	0.0%
Townhouse	-	0.0%	-	0.0%	-	0.0%	-	0.0%	-	0.0%	-	-	-	-	-	0.0%
YTD:	-	0.0%	-	0.0%	-	0.0%	-	0.0%	-	0.0%	-	-	-	-	-	0.0%
Condominium	-	0.0%	-	0.0%	-	0.0%	-	0.0%	-	0.0%	-	-	-	-	-	0.0%
YTD:	-	0.0%	-	0.0%	-	0.0%	-	0.0%	-	0.0%	-	-	-	-	-	0.0%

* Local Market Area Code: 223; Type: Census Place Group
 ** Closed Sale counts for most recent 3 months are Preliminary.

Market Analysis By Local Market Area*: Wolfforth

Property Type	Closed Sales**	YoY%	Dollar Volume	YoY%	Average Price	YoY%	Median Price	YoY%	Price/Sqft	YoY%	DOM	New Listings	Active Listings	Pending Sales	Months Inventory	Close To OLP
All(New and Existing)																
Residential (SF/COND/TH)	24	71.4%	\$6,090,608	30.2%	\$253,775	-24.1%	\$231,900	-25.9%	\$137	-11.2%	36	18	48	15	2.6	96.4%
YTD:	209	5.6%	\$64,216,176	1.8%	\$307,254	-3.5%	\$290,000	-9.2%	\$150	-1.2%	48	349	54	215		97.7%
Single Family	24	71.4%	\$6,090,608	30.2%	\$253,775	-24.1%	\$231,900	-25.9%	\$137	-11.2%	36	18	48	15	2.6	96.4%
YTD:	208	8.3%	\$64,040,810	3.3%	\$307,889	-4.6%	\$290,000	-10.1%	\$150	-1.4%	49	346	53	214		97.7%
Townhouse	-	0.0%	-	0.0%	-	0.0%	-	0.0%	-	0.0%	-	-	-	-	-	0.0%
YTD:	1	-83.3%	\$176,000	-83.5%	\$176,000	-1.2%	\$176,000	-1.1%	\$146	2.5%	10	3	1	1		93.1%
Condominium	-	0.0%	-	0.0%	-	0.0%	-	0.0%	-	0.0%	-	-	-	-	-	0.0%
YTD:	-	0.0%	-	0.0%	-	0.0%	-	0.0%	-	0.0%	-	-	-	-	-	0.0%
Existing Home																
Residential (SF/COND/TH)	8	-27.3%	\$1,651,000	-53.7%	\$206,375	-36.3%	\$192,500	-26.5%	\$120	-19.1%	31	8	28	4	2.9	92.3%
YTD:	111	6.7%	\$32,983,249	8.0%	\$297,146	1.2%	\$283,000	-2.3%	\$142	4.9%	35	196	25	115		97.1%
Single Family	8	-27.3%	\$1,651,000	-53.7%	\$206,375	-36.3%	\$192,500	-26.5%	\$120	-19.1%	31	8	28	4	2.9	92.3%
YTD:	110	5.8%	\$32,807,249	7.4%	\$298,248	1.6%	\$283,500	-2.1%	\$142	4.9%	35	193	24	114		97.2%
Townhouse	-	0.0%	-	0.0%	-	0.0%	-	0.0%	-	0.0%	-	-	-	-	-	0.0%
YTD:	1	100.0%	\$176,000	100.0%	\$176,000	100.0%	\$176,000	100.0%	\$146	100.0%	10	3	1	1		93.1%
Condominium	-	0.0%	-	0.0%	-	0.0%	-	0.0%	-	0.0%	-	-	-	-	-	0.0%
YTD:	-	0.0%	-	0.0%	-	0.0%	-	0.0%	-	0.0%	-	-	-	-	-	0.0%
New Construction																
Residential (SF/COND/TH)	15	400.0%	\$4,185,833	275.7%	\$279,056	-24.9%	\$241,089	-27.1%	\$147	-17.5%	39	10	20	11	2.3	98.5%
YTD:	97	3.2%	\$30,925,673	-4.9%	\$318,821	-7.8%	\$299,990	-11.8%	\$159	-6.4%	64	153	29	100		98.3%
Single Family	15	400.0%	\$4,185,833	275.7%	\$279,056	-24.9%	\$241,089	-27.1%	\$147	-17.5%	39	10	20	11	2.3	98.5%
YTD:	97	10.2%	\$30,925,673	-1.7%	\$318,821	-10.8%	\$299,990	-12.7%	\$159	-7.4%	64	153	29	100		98.3%
Townhouse	-	0.0%	-	0.0%	-	0.0%	-	0.0%	-	0.0%	-	-	-	-	-	0.0%
YTD:	-	-100.0%	-	-100.0%	-	-100.0%	-	-100.0%	-	-100.0%	-	-	-	-	-	0.0%
Condominium	-	0.0%	-	0.0%	-	0.0%	-	0.0%	-	0.0%	-	-	-	-	-	0.0%
YTD:	-	0.0%	-	0.0%	-	0.0%	-	0.0%	-	0.0%	-	-	-	-	-	0.0%

* Local Market Area Code: 1096; Type: Census Place Group
 ** Closed Sale counts for most recent 3 months are Preliminary.

