

Market Analysis By State: Texas

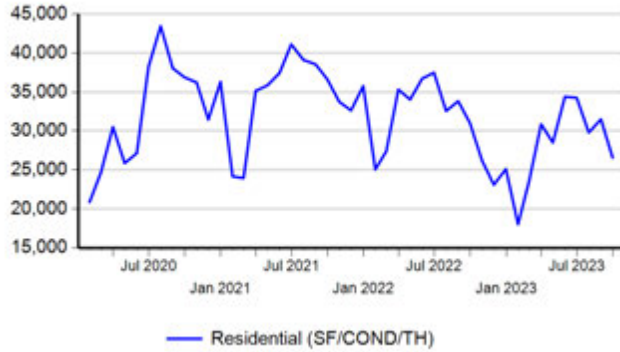
Property Type	Closed Sales*	YoY%	Dollar Volume	YoY%	Average Price	YoY%	Median Price	YoY%	Price/Sqft	YoY%	DOM	New Listings	Active Listings	Pending Sales	Months Inventory	Close To OLP
<b>All(New and Existing)</b>																
Residential (SF/COND/TH)	26,570	-14.4%	\$11,106,504,301	-12.6%	\$418,009	2.1%	\$339,990	-0.1%	\$191	0.6%	51	41,096	101,078	24,615	3.7	95.1%
YTD:	257,472	-12.3%	\$106,858,614,742	-12.6%	\$415,030	-0.4%	\$338,000	-1.6%	\$190	-1.4%	55	382,672	86,125	263,658		95.3%
Single Family	24,922	-14.4%	\$10,546,210,770	-12.7%	\$423,169	2.0%	\$341,220	-1.1%	\$189	0.7%	51	38,289	94,182	23,052	3.6	95.1%
YTD:	241,622	-11.8%	\$101,389,754,155	-12.2%	\$419,621	-0.5%	\$340,000	-2.0%	\$187	-1.3%	55	356,966	80,370	247,414		95.3%
Townhouse	708	-7.6%	\$248,061,189	-8.1%	\$350,369	-0.6%	\$315,000	-3.7%	\$195	2.0%	44	1,145	2,545	701	3.5	96.1%
YTD:	6,763	-16.4%	\$2,388,318,491	-16.8%	\$353,145	-0.6%	\$327,300	0.7%	\$194	0.7%	51	10,525	2,123	7,036		96.2%
Condominium	912	-19.7%	\$303,466,401	-15.9%	\$332,748	4.7%	\$252,500	3.1%	\$259	-1.1%	50	1,662	4,351	862	4.5	94.3%
YTD:	9,043	-22.7%	\$3,066,253,278	-22.4%	\$339,075	0.4%	\$255,000	2.6%	\$264	-0.6%	49	15,181	3,632	9,208		95.5%
<b>Existing Home</b>																
Residential (SF/COND/TH)	20,129	-19.2%	\$8,243,559,570	-17.5%	\$409,536	2.1%	\$325,000	-0.3%	\$190	1.4%	42	30,889	70,986	17,948	3.4	94.8%
YTD:	195,367	-19.8%	\$79,546,137,667	-20.9%	\$407,163	-1.3%	\$325,000	-3.0%	\$188	-1.7%	45	293,831	59,230	198,994		95.5%
Single Family	18,726	-19.2%	\$7,790,100,342	-17.5%	\$416,005	2.2%	\$329,950	0.0%	\$187	1.6%	42	28,458	65,485	16,647	3.4	94.8%
YTD:	181,753	-19.5%	\$75,059,914,170	-20.6%	\$412,978	-1.4%	\$328,300	-3.2%	\$185	-1.7%	45	272,206	54,786	185,216		95.5%
Townhouse	536	-14.2%	\$181,110,070	-14.6%	\$337,892	-0.4%	\$291,750	-2.8%	\$187	2.2%	35	901	1,669	499	3.0	96.2%
YTD:	5,107	-25.0%	\$1,733,072,613	-26.9%	\$339,352	-2.5%	\$305,000	-1.6%	\$186	-1.2%	42	7,759	1,310	5,229		96.6%
Condominium	848	-22.1%	\$267,152,655	-20.0%	\$315,039	2.7%	\$245,000	3.3%	\$254	-1.0%	49	1,530	3,832	802	4.3	94.2%
YTD:	8,472	-24.1%	\$2,742,432,163	-24.5%	\$323,705	-0.6%	\$244,250	1.8%	\$258	-1.6%	46	13,866	3,133	8,549		95.6%
<b>New Construction</b>																
Residential (SF/COND/TH)	6,431	5.1%	\$2,859,867,655	5.2%	\$444,700	0.1%	\$370,000	-3.6%	\$196	-3.3%	78	10,207	30,092	6,667	4.5	95.8%
YTD:	62,080	24.2%	\$27,302,800,041	25.3%	\$439,800	0.9%	\$369,990	-1.3%	\$195	-1.4%	87	88,841	26,895	64,664		94.7%
Single Family	6,190	4.3%	\$2,754,387,512	4.6%	\$444,974	0.2%	\$370,000	-3.4%	\$194	-3.3%	78	9,831	28,697	6,405	4.4	95.8%
YTD:	59,847	24.3%	\$26,321,151,427	25.5%	\$439,807	1.0%	\$369,384	-1.5%	\$193	-1.5%	87	84,760	25,583	62,198		94.7%
Townhouse	170	20.6%	\$66,178,489	14.4%	\$389,285	-5.1%	\$358,735	-10.3%	\$217	-3.0%	72	244	876	202	4.9	95.7%
YTD:	1,653	29.3%	\$654,050,824	30.5%	\$395,675	0.9%	\$376,206	1.7%	\$218	1.7%	77	2,766	812	1,807		95.3%
Condominium	63	34.0%	\$35,979,547	34.4%	\$571,104	0.2%	\$459,000	-5.4%	\$320	-15.0%	63	132	519	60	8.4	96.0%
YTD:	570	4.6%	\$323,369,854	1.3%	\$567,316	-3.2%	\$482,228	5.1%	\$356	5.2%	91	1,315	499	659		94.2%

\* Closed Sale counts for most recent 3 months are Preliminary.

Trend Analysis By State: Texas

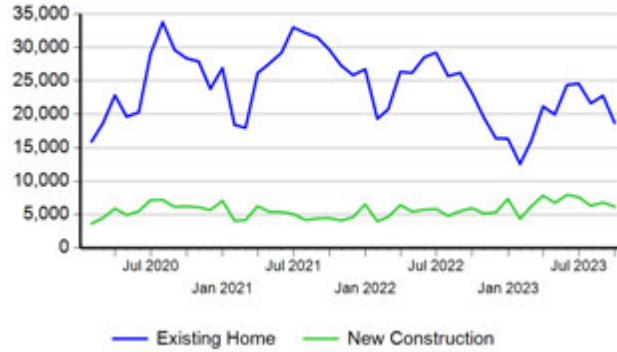
Residential, All (New and Existing)

Monthly Units Sold



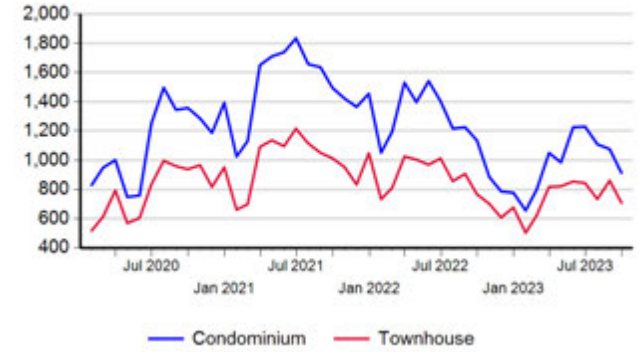
Single Family, New vs. Existing

Monthly Units Sold



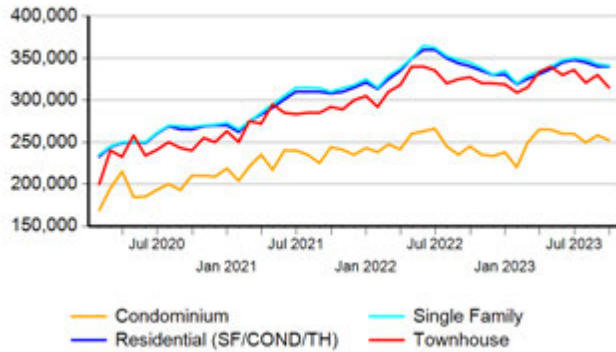
COND/TH, All (New and Existing)

Monthly Units Sold



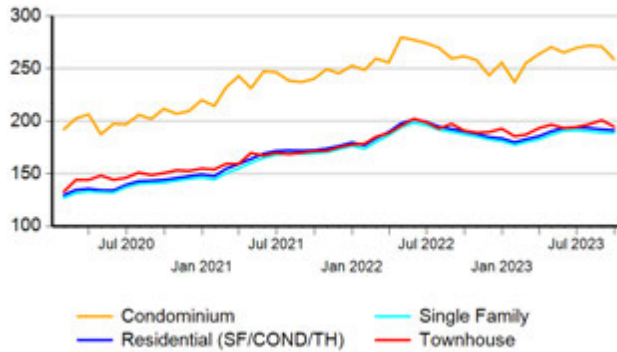
All (New and Existing) Construction

Median Sale Price



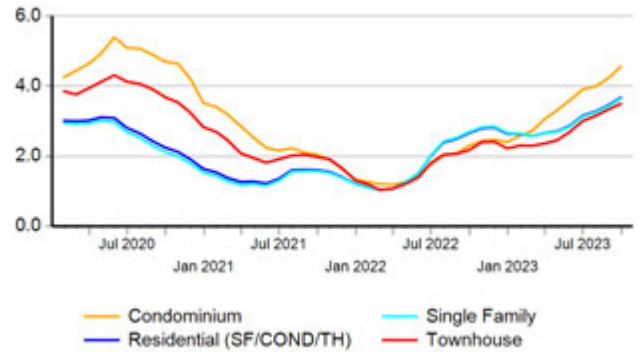
All (New and Existing) Construction

Average Close Price PSF



All (New and Existing) Construction

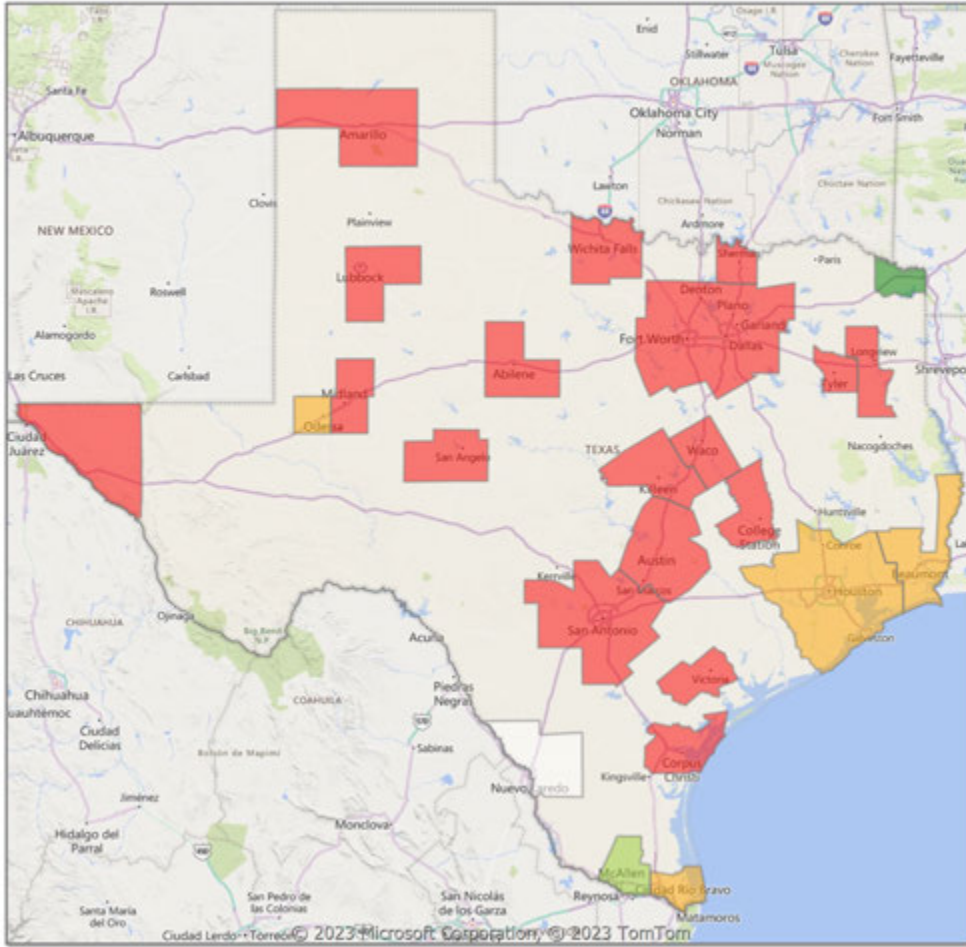
Months Inventory



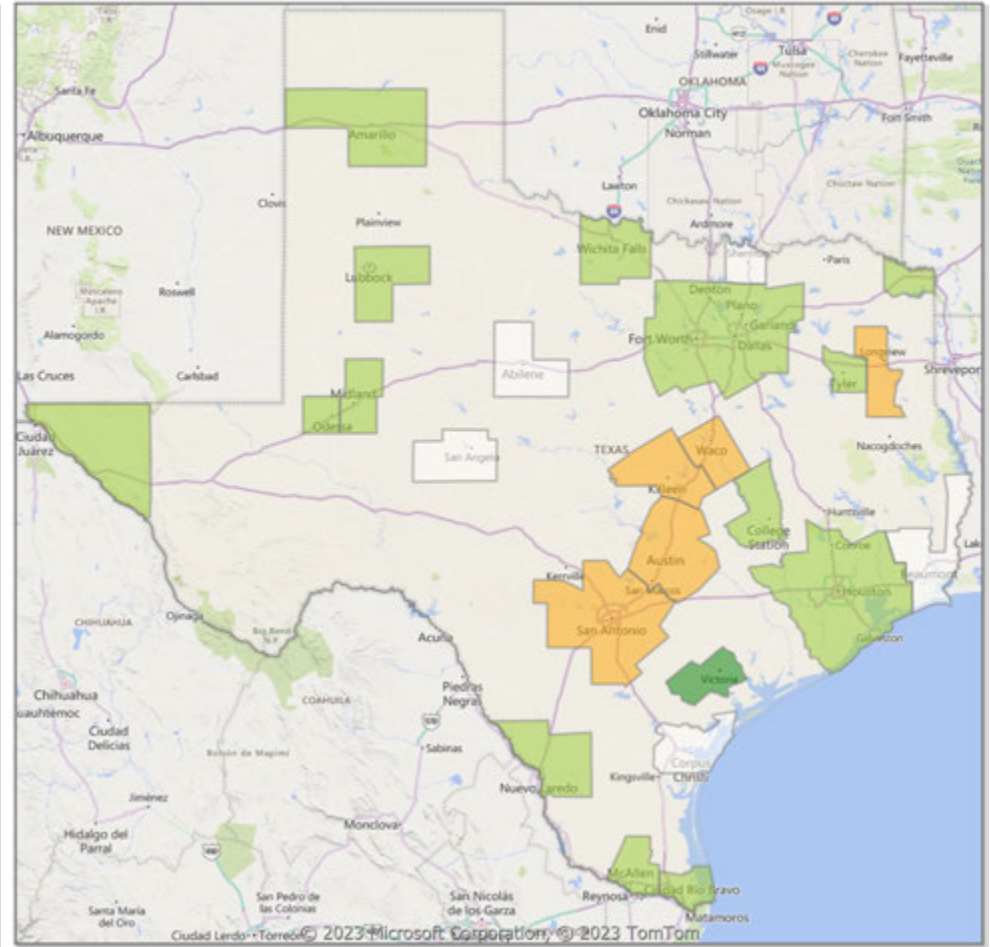
\* Closed Sale counts for most recent 3 months are Preliminary.

**Comparison By Metropolitan Statistical Area in Texas**

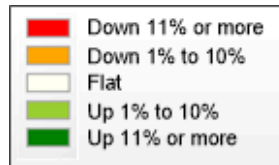
**Residential\* Closed Sales  
YoY Percentage Change**



**Residential\* Avg Close Price Per SqFt  
YoY Percentage Change**

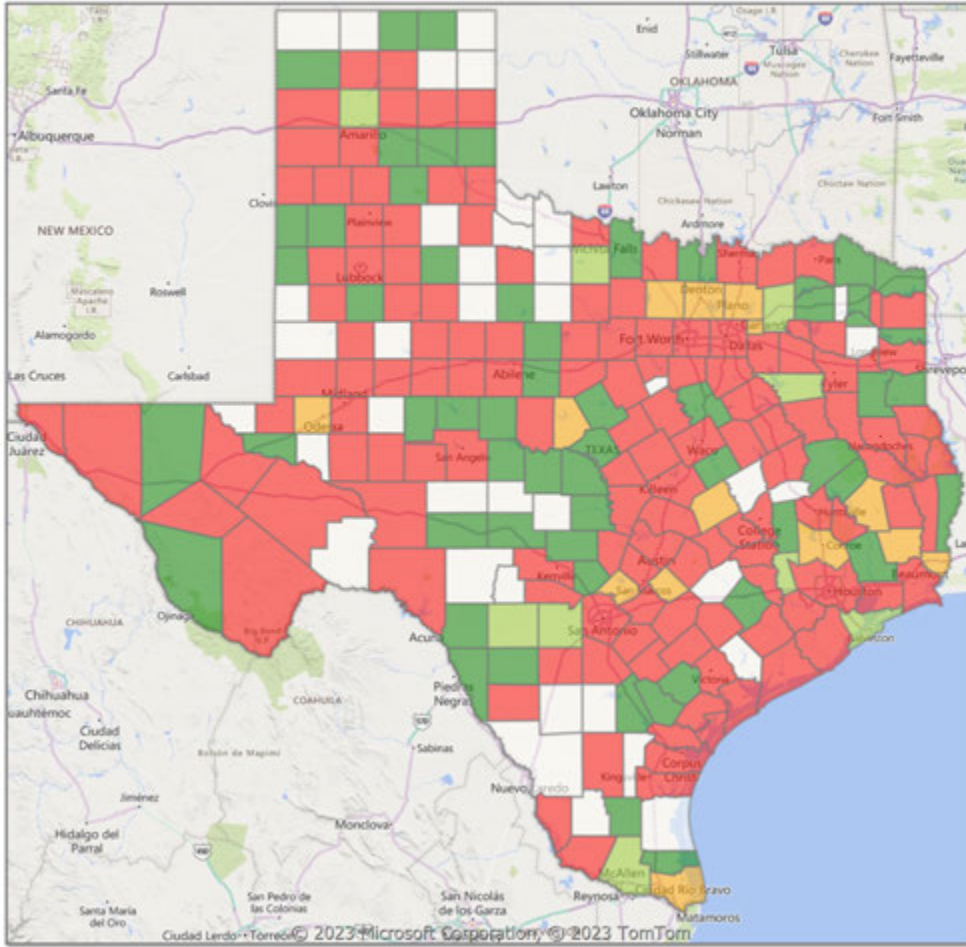


\* Residential includes Single Family, Condominium and Townhouse.

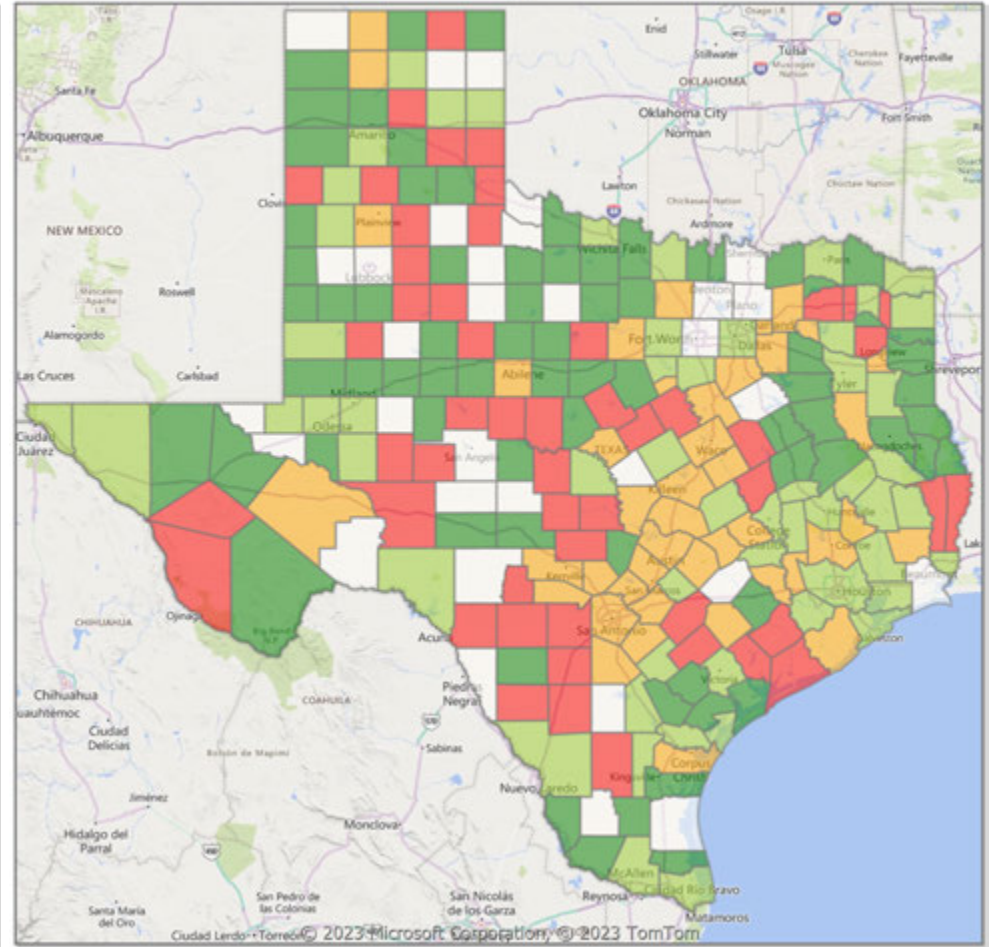


**Comparison By County in Texas**

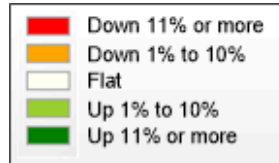
**Residential\* Closed Sales  
YoY Percentage Change**



**Residential\* Avg Close Price Per SqFt  
YoY Percentage Change**



\* Residential includes Single Family, Condominium and Townhouse.



Market Analysis By Metropolitan Statistical Area: Lubbock

Property Type	Closed Sales*	YoY%	Dollar Volume	YoY%	Average Price	YoY%	Median Price	YoY%	Price/Sqft	YoY%	DOM	New Listings	Active Listings	Pending Sales	Months Inventory	Close To OLP
<b>All(New and Existing)</b>																
Residential (SF/COND/TH)	326	-17.5%	\$95,937,119	-13.5%	\$294,286	4.9%	\$239,000	-1.2%	\$138	1.1%	37	719	1,312	365	3.5	95.8%
YTD:	3,625	-6.1%	\$1,025,855,782	-5.9%	\$282,995	0.3%	\$241,530	-0.2%	\$137	1.6%	37	6,282	1,070	3,744		96.7%
Single Family	307	-21.3%	\$92,075,696	-16.1%	\$299,921	6.6%	\$253,500	4.8%	\$138	1.0%	35	702	1,256	353	3.4	96.0%
YTD:	3,520	-6.7%	\$1,002,278,047	-6.6%	\$284,738	0.1%	\$245,000	0.0%	\$137	1.6%	37	6,049	1,019	3,645		96.8%
Townhouse	16	220.0%	\$3,276,030	199.2%	\$204,752	-6.5%	\$199,450	-0.3%	\$138	8.9%	77	16	55	10	6.5	91.1%
YTD:	85	32.8%	\$17,161,126	35.9%	\$201,896	2.3%	\$199,900	5.2%	\$133	3.5%	43	211	47	80		95.4%
Condominium	2	100.0%	\$370,000	100.0%	\$185,000	100.0%	\$185,000	100.0%	\$139	100.0%	10	1	1	2	0.5	100.0%
YTD:	18	-33.3%	\$5,882,000	34.1%	\$326,778	101.1%	\$241,000	82.6%	\$133	1.4%	15	22	4	19		94.4%

\* Closed Sale counts for most recent 3 months are Preliminary.

<b>Existing Home</b>																
Residential (SF/COND/TH)	261	-16.9%	\$73,877,268	-9.0%	\$283,055	9.5%	\$222,000	-1.3%	\$131	3.3%	32	493	883	281	2.9	95.4%
YTD:	2,878	-8.7%	\$760,561,904	-8.6%	\$264,268	0.2%	\$225,000	0.0%	\$130	2.0%	30	4,690	665	2,979		96.5%
Single Family	258	-16.8%	\$73,305,154	-8.9%	\$284,129	9.5%	\$222,000	-1.3%	\$131	3.1%	32	484	863	279	2.9	95.4%
YTD:	2,816	-8.8%	\$745,933,060	-9.0%	\$264,891	-0.3%	\$225,000	0.0%	\$130	2.0%	30	4,598	650	2,923		96.5%
Townhouse	1	-75.0%	\$215,000	-71.4%	\$215,000	14.5%	\$215,000	22.9%	\$134	21.5%	49	8	19	0	4.1	93.5%
YTD:	44	12.8%	\$8,756,196	16.5%	\$199,004	3.3%	\$185,000	-5.1%	\$128	7.7%	34	70	10	37		97.6%
Condominium	2	100.0%	\$370,000	100.0%	\$185,000	100.0%	\$185,000	100.0%	\$139	100.0%	10	1	1	2	0.5	100.0%
YTD:	18	-33.3%	\$5,882,000	34.1%	\$326,778	101.1%	\$241,000	82.6%	\$133	1.4%	15	22	4	19		94.4%

\* Closed Sale counts for most recent 3 months are Preliminary.

<b>New Construction</b>																
Residential (SF/COND/TH)	65	-19.8%	\$22,060,394	-25.7%	\$339,391	-7.4%	\$284,495	-9.7%	\$165	-4.8%	57	226	429	84	5.5	97.3%
YTD:	746	5.1%	\$265,019,010	2.7%	\$355,253	-2.3%	\$310,388	-5.8%	\$167	-2.4%	65	1,592	405	765		97.6%
Single Family	49	-38.8%	\$18,746,349	-36.1%	\$382,579	4.3%	\$346,900	10.1%	\$173	0.2%	50	218	393	74	5.3	99.3%
YTD:	703	2.6%	\$255,921,150	1.2%	\$364,041	-1.4%	\$322,990	-3.3%	\$168	-2.0%	66	1,451	368	722		97.9%
Townhouse	15	1400.0%	\$3,061,030	789.8%	\$204,069	-40.7%	\$199,000	-42.2%	\$139	-28.3%	79	8	36	10	9.6	91.0%
YTD:	41	64.0%	\$8,404,930	64.4%	\$204,998	0.2%	\$199,900	7.5%	\$139	-3.7%	53	141	36	43		93.0%
Condominium	-	0.0%	-	0.0%	-	0.0%	-	0.0%	-	0.0%	-	-	0	0	-	0.0%
YTD:	-	0.0%	-	0.0%	-	0.0%	-	0.0%	-	0.0%	-	0	0	0		0.0%

\* Closed Sale counts for most recent 3 months are Preliminary.



Trend Analysis By Metropolitan Statistical Area: Lubbock

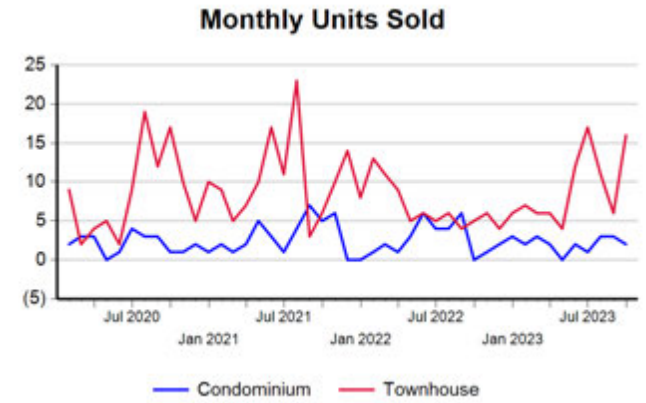
Residential, All (New and Existing)



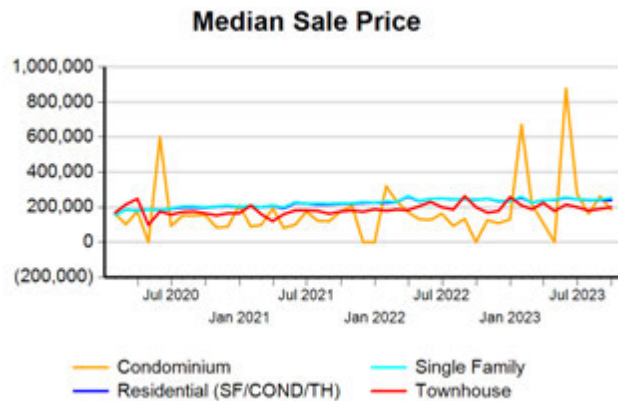
Single Family, New vs. Existing



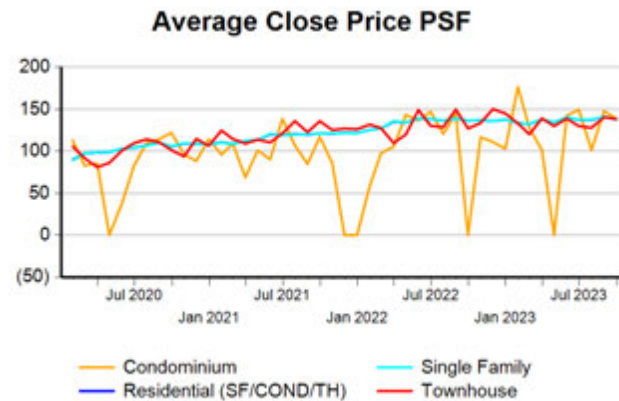
COND/TH, All (New and Existing)



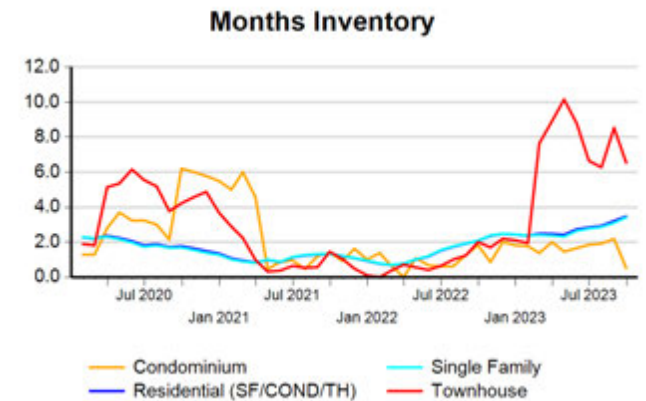
All (New and Existing) Construction



All (New and Existing) Construction



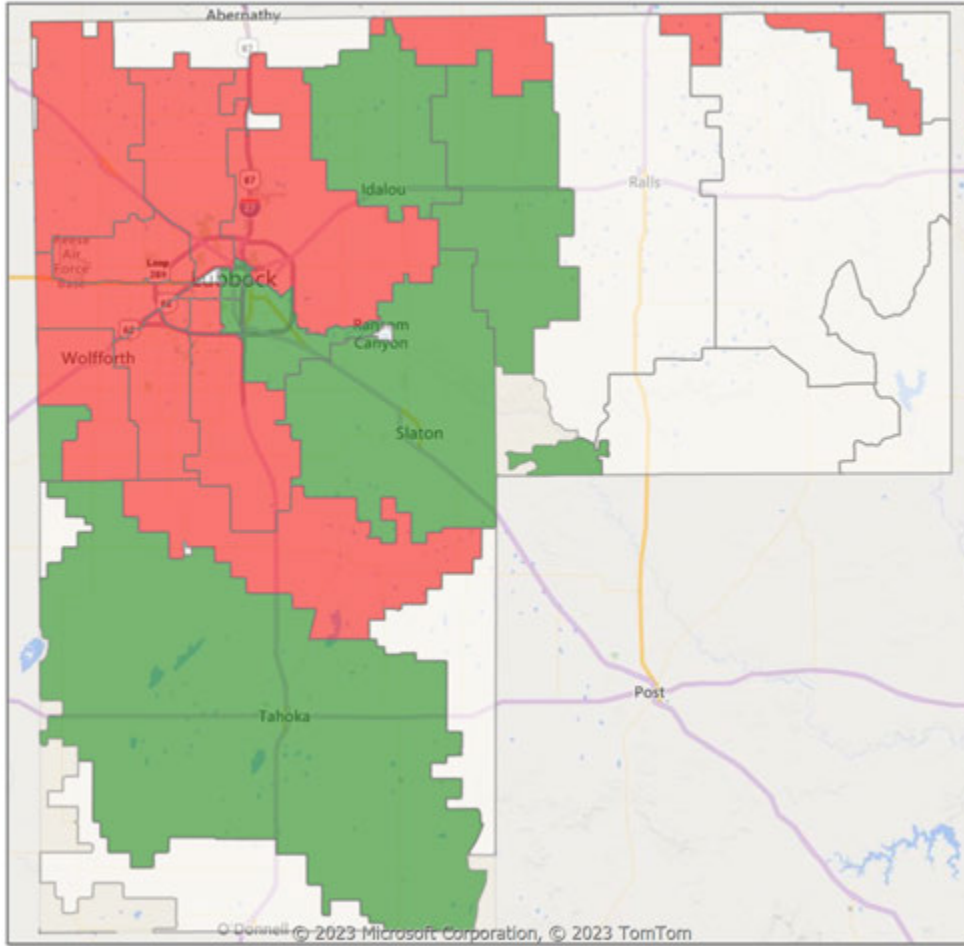
All (New and Existing) Construction



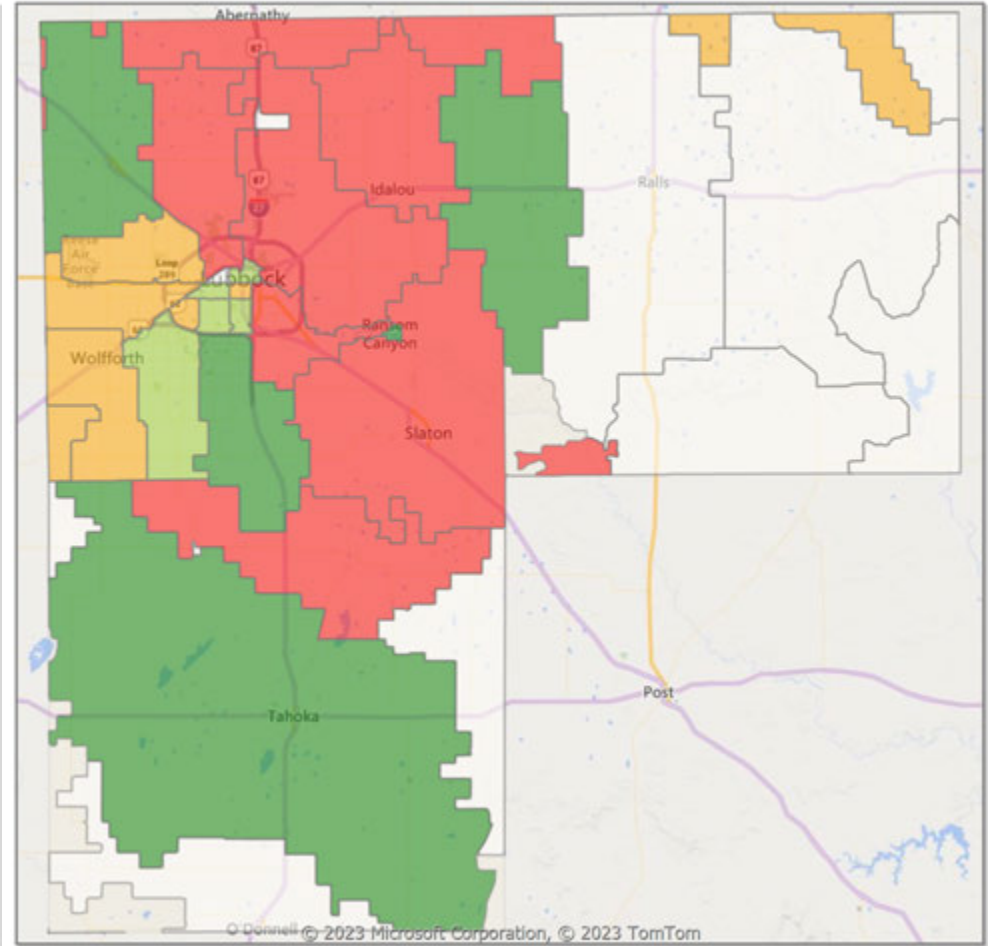
\* Closed Sale counts for most recent 3 months are Preliminary.

**Comparison By Zip Code\* in Lubbock MSA**

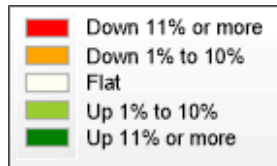
**Residential\*\* Closed Sales  
YoY Percentage Change**



**Residential\*\* Avg Close Price Per SqFt  
YoY Percentage Change**

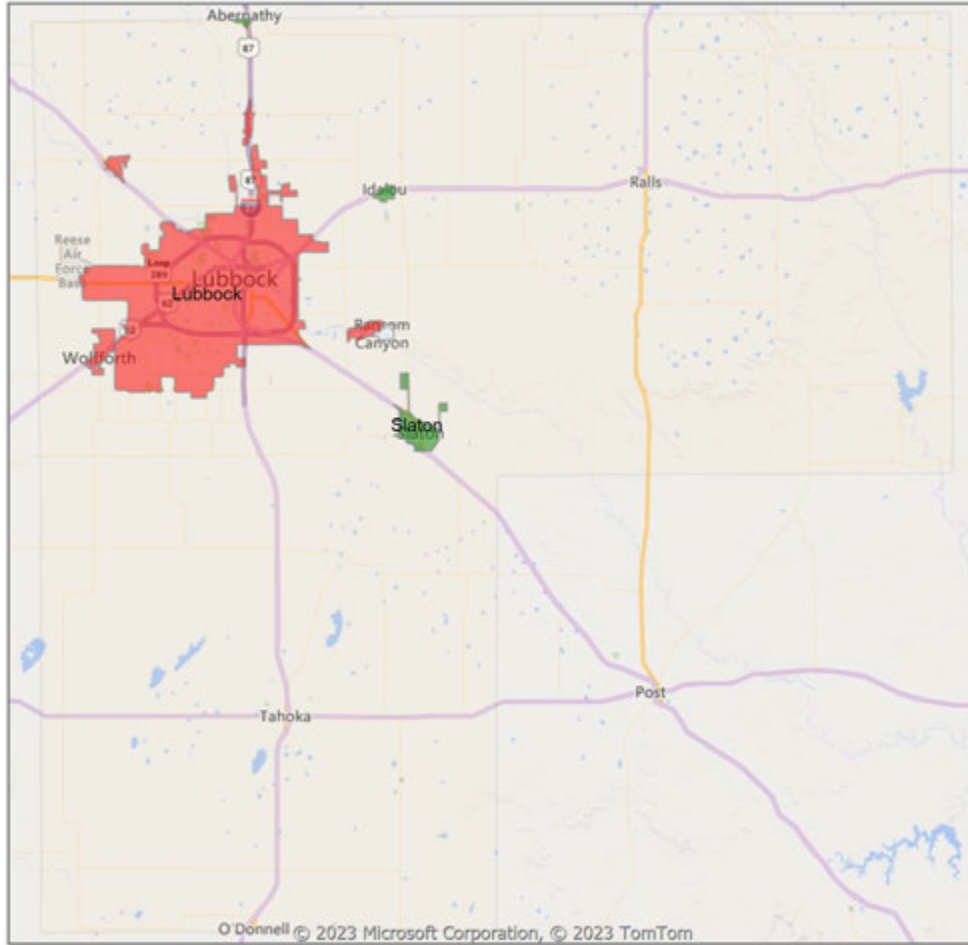


\* US Census Zip Code Tabulation Area  
\*\* Residential includes Single Family, Condominium and Townhouse.

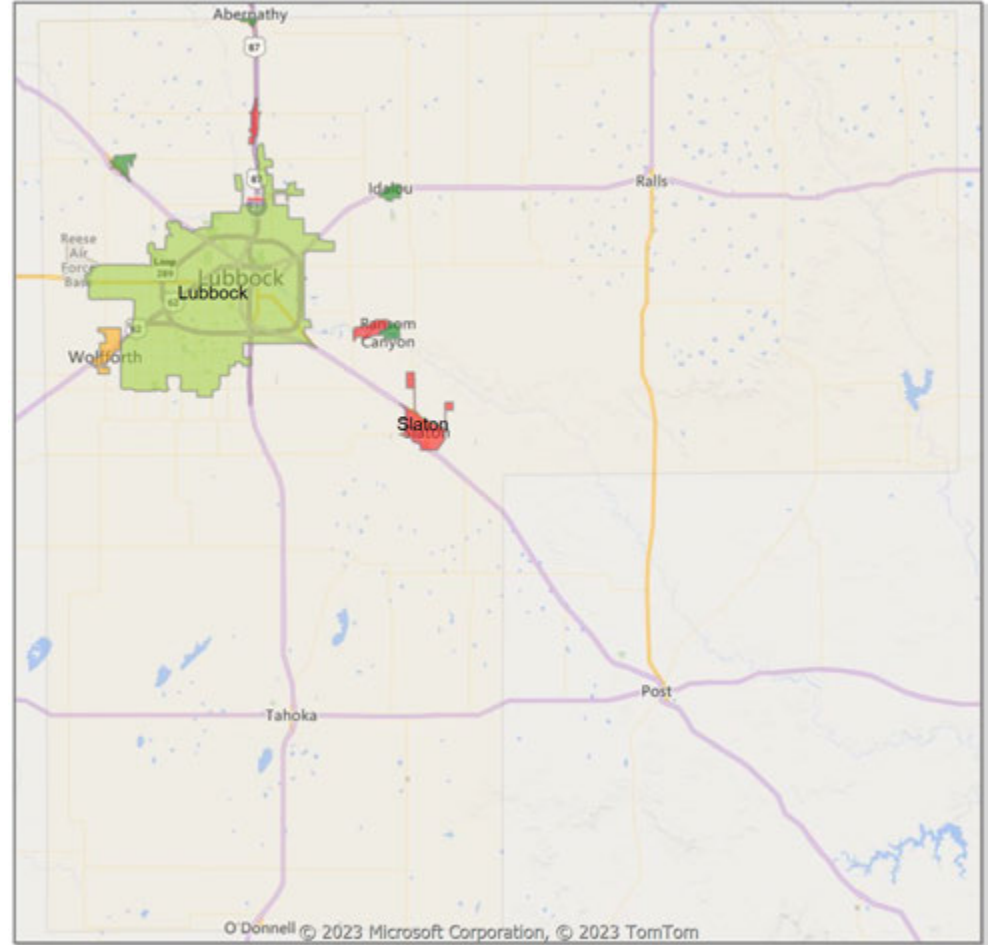


**Comparison By Local Market Area\* in Lubbock MSA**

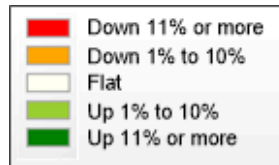
**Residential\*\* Closed Sales  
YoY Percentage Change**



**Residential\*\* Avg Close Price Per SqFt  
YoY Percentage Change**



\* Census Place Group  
\*\* Residential includes Single Family, Condominium and Townhouse.





Market Analysis By County: Hockley County

Property Type	Closed Sales*	YoY%	Dollar Volume	YoY%	Average Price	YoY%	Median Price	YoY%	Price/Sqft	YoY%	DOM	New Listings	Active Listings	Pending Sales	Months Inventory	Close To OLP
<b>All(New and Existing)</b>																
Residential (SF/COND/TH)	9	-50.0%	\$1,112,500	-66.4%	\$123,611	-32.8%	\$123,000	-25.9%	\$96	-0.9%	33	32	86	18	6.0	94.5%
<b>YTD:</b>	139	-2.8%	\$30,633,800	12.9%	\$220,387	16.2%	\$195,000	12.1%	\$105	10.0%	53	286	65	150		95.0%
Single Family	9	-50.0%	\$1,112,500	-66.4%	\$123,611	-32.8%	\$123,000	-25.9%	\$96	-0.9%	33	32	85	18	5.9	94.5%
<b>YTD:</b>	139	-2.1%	\$30,633,800	13.7%	\$220,387	16.2%	\$195,000	13.4%	\$105	10.1%	53	285	64	150		95.0%
Townhouse	-	0.0%	-	0.0%	-	0.0%	-	0.0%	-	0.0%	-	-	-	-	-	0.0%
<b>YTD:</b>	-	-100.0%	-	-100.0%	-	-100.0%	-	-100.0%	-	-100.0%	-	-	-	-	-	0.0%
Condominium	-	0.0%	-	0.0%	-	0.0%	-	0.0%	-	0.0%	-	-	1	-	-	0.0%
<b>YTD:</b>	-	0.0%	-	0.0%	-	0.0%	-	0.0%	-	0.0%	-	1	1	-	-	0.0%
<b>Existing Home</b>																
Residential (SF/COND/TH)	9	-50.0%	\$1,112,500	-66.4%	\$123,611	-32.8%	\$123,000	-25.9%	\$96	-0.9%	33	32	82	17	5.8	94.5%
<b>YTD:</b>	136	-4.2%	\$29,769,800	11.4%	\$218,896	16.3%	\$194,000	12.8%	\$104	9.7%	53	274	61	146		94.9%
Single Family	9	-50.0%	\$1,112,500	-66.4%	\$123,611	-32.8%	\$123,000	-25.9%	\$96	-0.9%	33	32	81	17	5.8	94.5%
<b>YTD:</b>	136	-3.6%	\$29,769,800	12.2%	\$218,896	16.3%	\$194,000	14.1%	\$104	9.8%	53	273	60	146		94.9%
Townhouse	-	0.0%	-	0.0%	-	0.0%	-	0.0%	-	0.0%	-	-	-	-	-	0.0%
<b>YTD:</b>	-	-100.0%	-	-100.0%	-	-100.0%	-	-100.0%	-	-100.0%	-	-	-	-	-	0.0%
Condominium	-	0.0%	-	0.0%	-	0.0%	-	0.0%	-	0.0%	-	-	1	-	-	0.0%
<b>YTD:</b>	-	0.0%	-	0.0%	-	0.0%	-	0.0%	-	0.0%	-	1	1	-	-	0.0%
<b>New Construction</b>																
Residential (SF/COND/TH)	-	0.0%	-	0.0%	-	0.0%	-	0.0%	-	0.0%	-	-	4	1	16.0	0.0%
<b>YTD:</b>	3	200.0%	\$864,000	118.0%	\$288,000	-27.3%	\$250,000	-36.9%	\$135	-9.0%	96	12	4	4		101.1%
Single Family	-	0.0%	-	0.0%	-	0.0%	-	0.0%	-	0.0%	-	-	4	1	16.0	0.0%
<b>YTD:</b>	3	200.0%	\$864,000	118.0%	\$288,000	-27.3%	\$250,000	-36.9%	\$135	-9.0%	96	12	4	4		101.1%
Townhouse	-	0.0%	-	0.0%	-	0.0%	-	0.0%	-	0.0%	-	-	-	-	-	0.0%
<b>YTD:</b>	-	0.0%	-	0.0%	-	0.0%	-	0.0%	-	0.0%	-	-	-	-	-	0.0%
Condominium	-	0.0%	-	0.0%	-	0.0%	-	0.0%	-	0.0%	-	-	-	-	-	0.0%
<b>YTD:</b>	-	0.0%	-	0.0%	-	0.0%	-	0.0%	-	0.0%	-	-	-	-	-	0.0%

\* Closed Sale counts for most recent 3 months are Preliminary.

Market Analysis By County: Lubbock County

Property Type	Closed Sales*	YoY%	Dollar Volume	YoY%	Average Price	YoY%	Median Price	YoY%	Price/Sqft	YoY%	DOM	New Listings	Active Listings	Pending Sales	Months Inventory	Close To OLP
<b>All(New and Existing)</b>																
Residential (SF/COND/TH)	319	-17.8%	\$94,413,332	-14.1%	\$295,967	4.4%	\$240,313	-1.5%	\$139	0.9%	37	706	1,263	357	3.4	95.8%
YTD:	3,550	-6.5%	\$1,009,789,745	-6.3%	\$284,448	0.2%	\$243,238	-0.7%	\$138	1.6%	37	6,131	1,032	3,660		96.9%
Single Family	300	-21.7%	\$90,553,641	-16.8%	\$301,845	6.2%	\$254,275	3.8%	\$139	0.8%	35	689	1,207	345	3.3	96.1%
YTD:	3,446	-7.0%	\$986,395,046	-7.0%	\$286,243	0.0%	\$245,000	-0.2%	\$138	1.6%	37	5,898	981	3,562		96.9%
Townhouse	16	220.0%	\$3,276,030	199.2%	\$204,752	-6.5%	\$199,450	-0.3%	\$138	8.9%	77	16	55	10	6.5	91.1%
YTD:	85	32.8%	\$17,161,126	35.9%	\$201,896	2.3%	\$199,900	5.2%	\$133	3.5%	43	211	47	80		95.4%
Condominium	2	100.0%	\$370,000	100.0%	\$185,000	100.0%	\$185,000	100.0%	\$139	100.0%	10	1	1	2	0.5	100.0%
YTD:	17	-37.0%	\$5,697,000	29.9%	\$335,118	106.3%	\$262,000	98.5%	\$138	5.1%	15	22	4	18		95.2%
<b>Existing Home</b>																
Residential (SF/COND/TH)	254	-17.3%	\$72,349,708	-9.9%	\$284,841	8.9%	\$222,000	-2.4%	\$132	3.0%	32	482	841	274	2.9	95.5%
YTD:	2,807	-9.2%	\$746,244,511	-9.2%	\$265,851	-0.1%	\$225,000	0.0%	\$131	2.0%	29	4,552	632	2,900		96.6%
Single Family	251	-17.2%	\$71,778,241	-9.7%	\$285,969	9.0%	\$222,000	-2.7%	\$132	2.8%	32	473	821	272	2.9	95.5%
YTD:	2,746	-9.2%	\$731,801,002	-9.7%	\$266,497	-0.5%	\$225,100	0.0%	\$130	2.0%	29	4,460	617	2,845		96.6%
Townhouse	1	-75.0%	\$215,000	-71.4%	\$215,000	14.5%	\$215,000	22.9%	\$134	21.5%	49	8	19	-	4.1	93.5%
YTD:	44	12.8%	\$8,756,196	16.5%	\$199,004	3.3%	\$185,000	-5.1%	\$128	7.7%	34	70	10	37		97.6%
Condominium	2	100.0%	\$370,000	100.0%	\$185,000	100.0%	\$185,000	100.0%	\$139	100.0%	10	1	1	2	0.5	100.0%
YTD:	17	-37.0%	\$5,697,000	29.9%	\$335,118	106.3%	\$262,000	98.5%	\$138	5.1%	15	22	4	18		95.2%
<b>New Construction</b>																
Residential (SF/COND/TH)	65	-19.8%	\$22,060,394	-25.7%	\$339,391	-7.4%	\$284,495	-9.7%	\$165	-4.8%	57	224	422	83	5.4	97.3%
YTD:	742	5.3%	\$263,263,256	3.2%	\$354,802	-1.9%	\$310,000	-5.1%	\$167	-2.3%	65	1,579	399	760		97.7%
Single Family	49	-38.8%	\$18,746,349	-36.1%	\$382,579	4.3%	\$346,900	10.1%	\$173	0.2%	50	216	386	73	5.2	99.3%
YTD:	699	2.8%	\$254,166,345	1.7%	\$363,614	-1.1%	\$320,000	-4.2%	\$168	-1.9%	66	1,438	363	717		97.9%
Townhouse	15	1400.0%	\$3,061,030	789.8%	\$204,069	-40.7%	\$199,000	-42.2%	\$139	-28.3%	79	8	36	10	9.6	91.0%
YTD:	41	64.0%	\$8,404,930	64.4%	\$204,998	0.2%	\$199,900	7.5%	\$139	-3.7%	53	141	36	43		93.0%
Condominium	-	0.0%	-	0.0%	-	0.0%	-	0.0%	-	0.0%	-	-	-	-	-	0.0%
YTD:	-	0.0%	-	0.0%	-	0.0%	-	0.0%	-	0.0%	-	-	-	-	-	0.0%

\* Closed Sale counts for most recent 3 months are Preliminary.

Trend Analysis By County: Hockley County

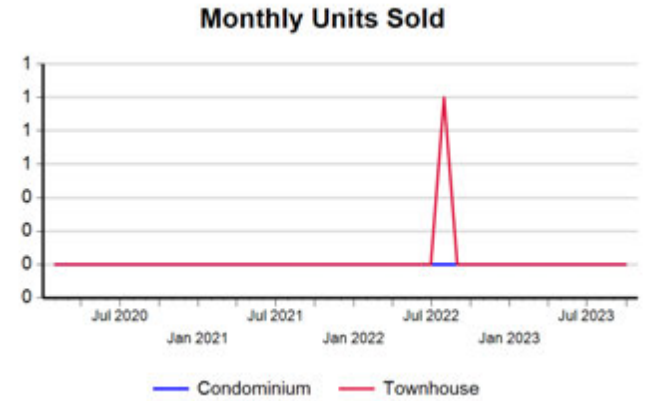
**Residential, All (New and Existing)**



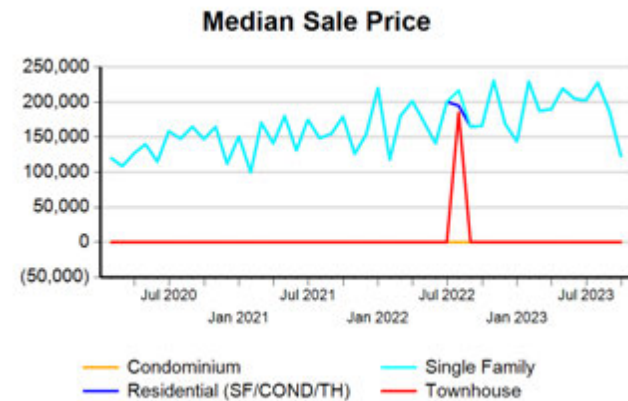
**Single Family, New vs. Existing**



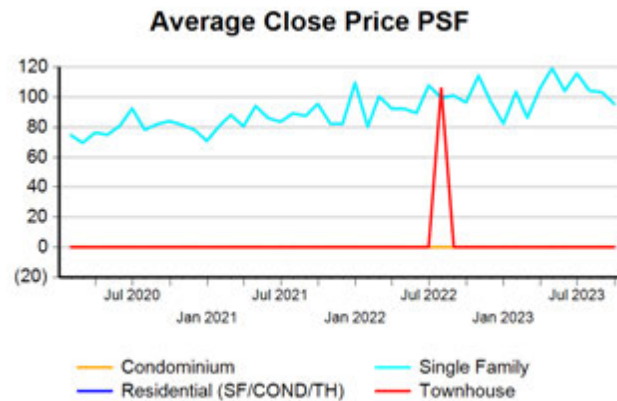
**COND/TH, All (New and Existing)**



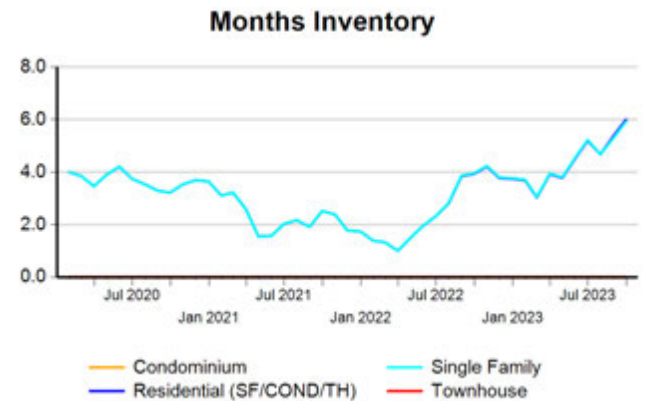
**All (New and Existing) Construction**



**All (New and Existing) Construction**



**All (New and Existing) Construction**



\* Closed Sale counts for most recent 3 months are Preliminary.

Trend Analysis By County: Lubbock County

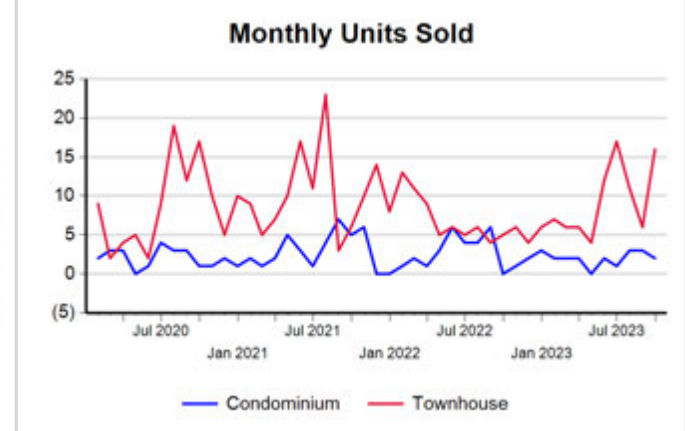
Residential, All (New and Existing)



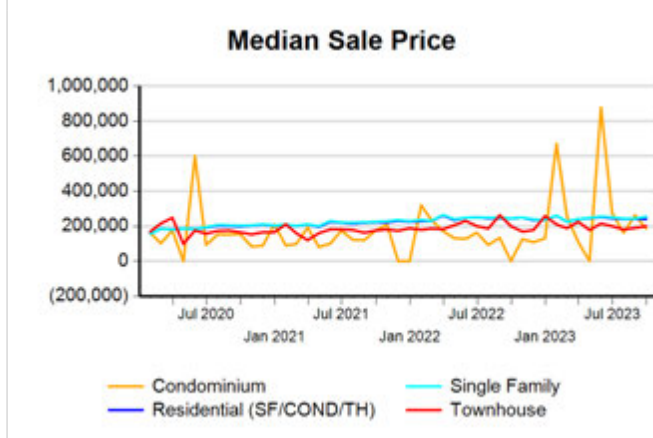
Single Family, New vs. Existing



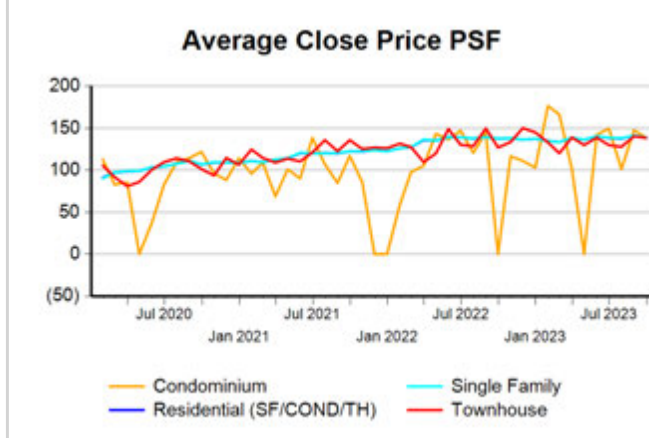
COND/TH, All (New and Existing)



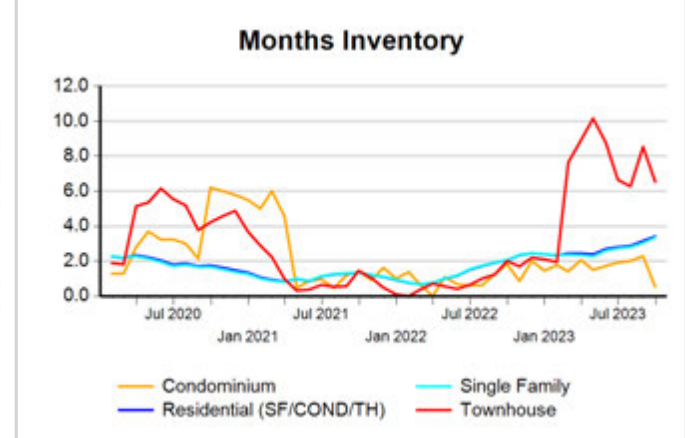
All (New and Existing) Construction



All (New and Existing) Construction



All (New and Existing) Construction

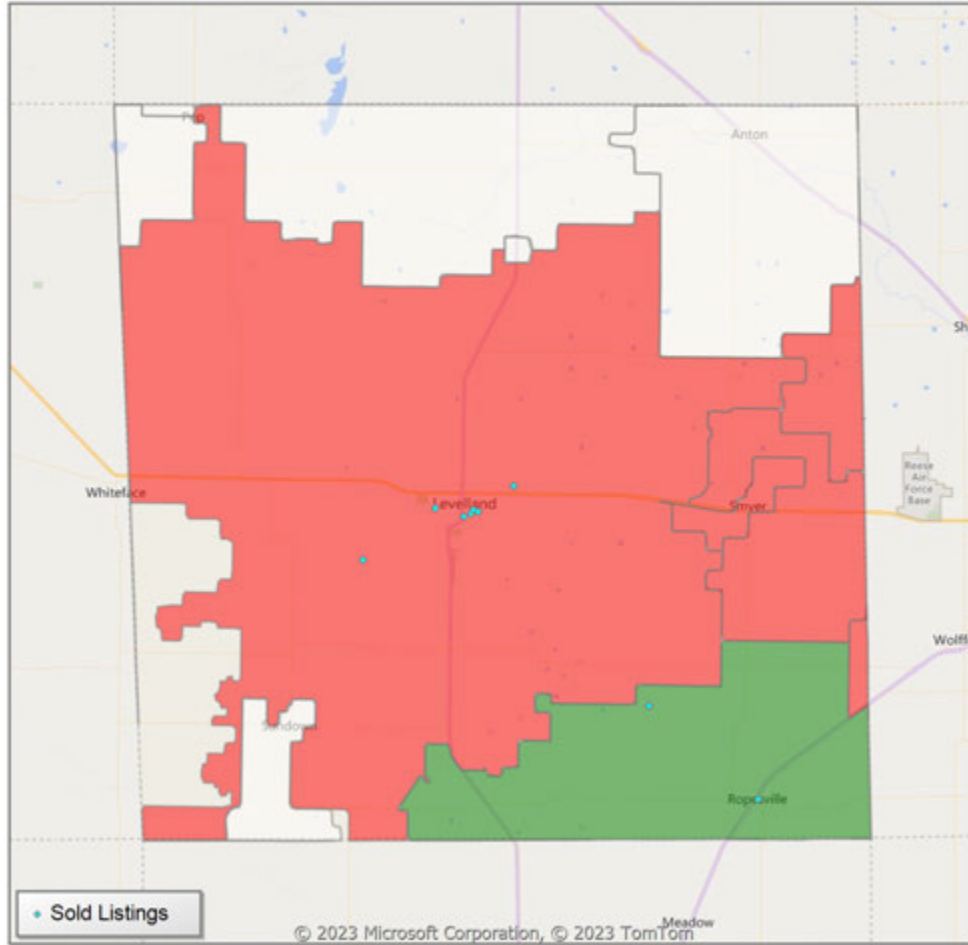


\* Closed Sale counts for most recent 3 months are Preliminary.

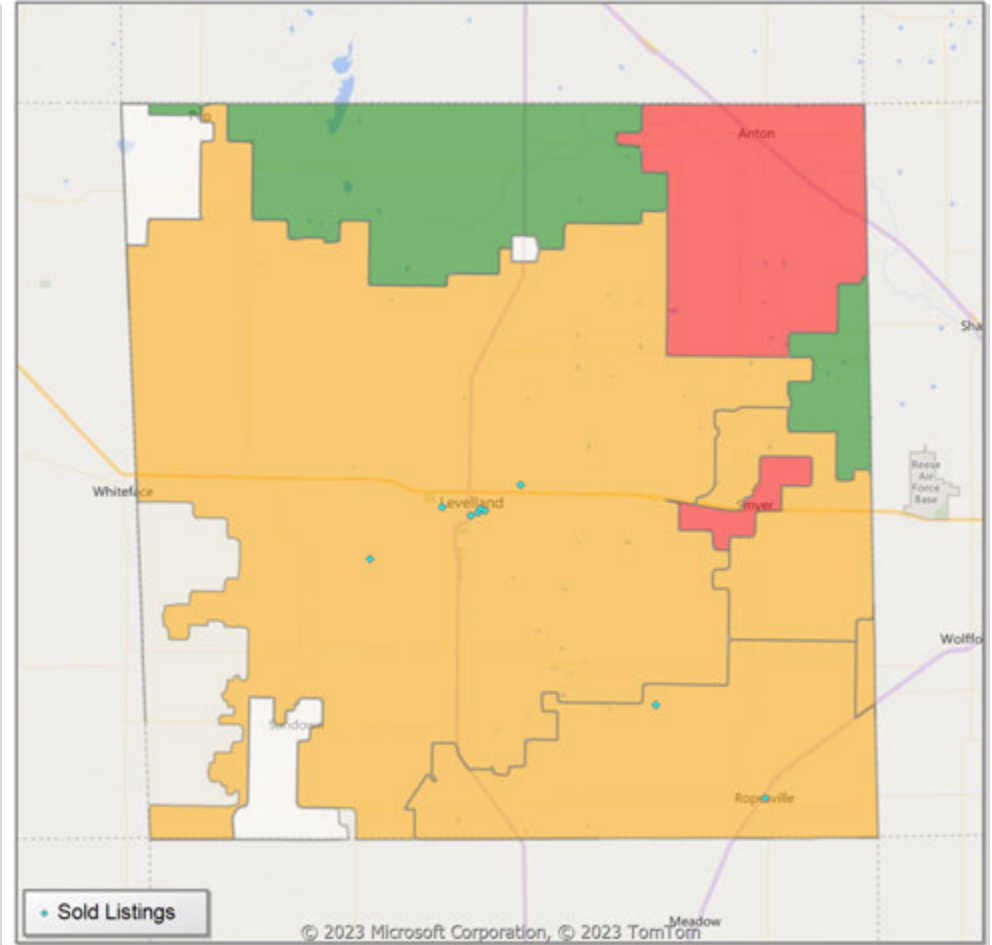


**Comparison By Zip Code\* in Hockley County**

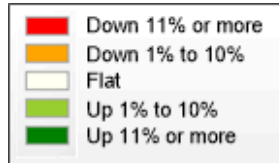
**Residential\*\* Closed Sales  
YoY Percentage Change**



**Residential\*\* Avg Close Price Per SqFt  
YoY Percentage Change**

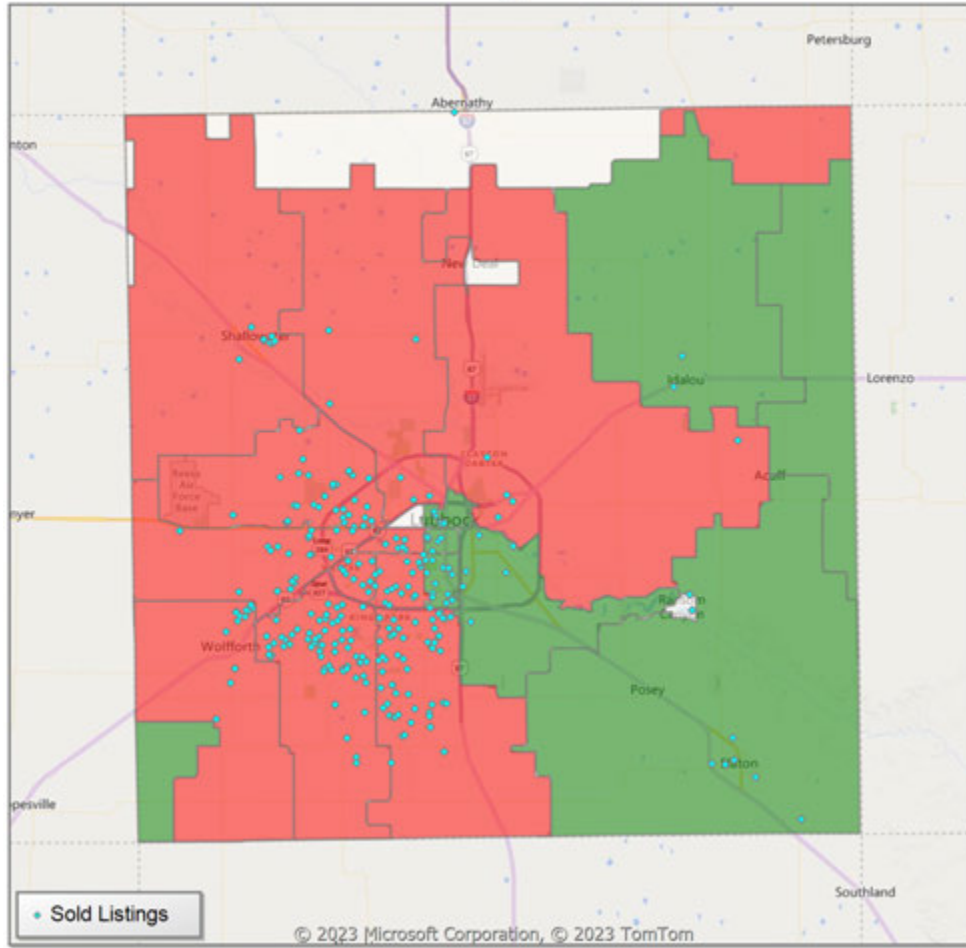


\* US Census Zip Code Tabulation Area  
\*\* Residential includes Single Family, Condominium and Townhouse.

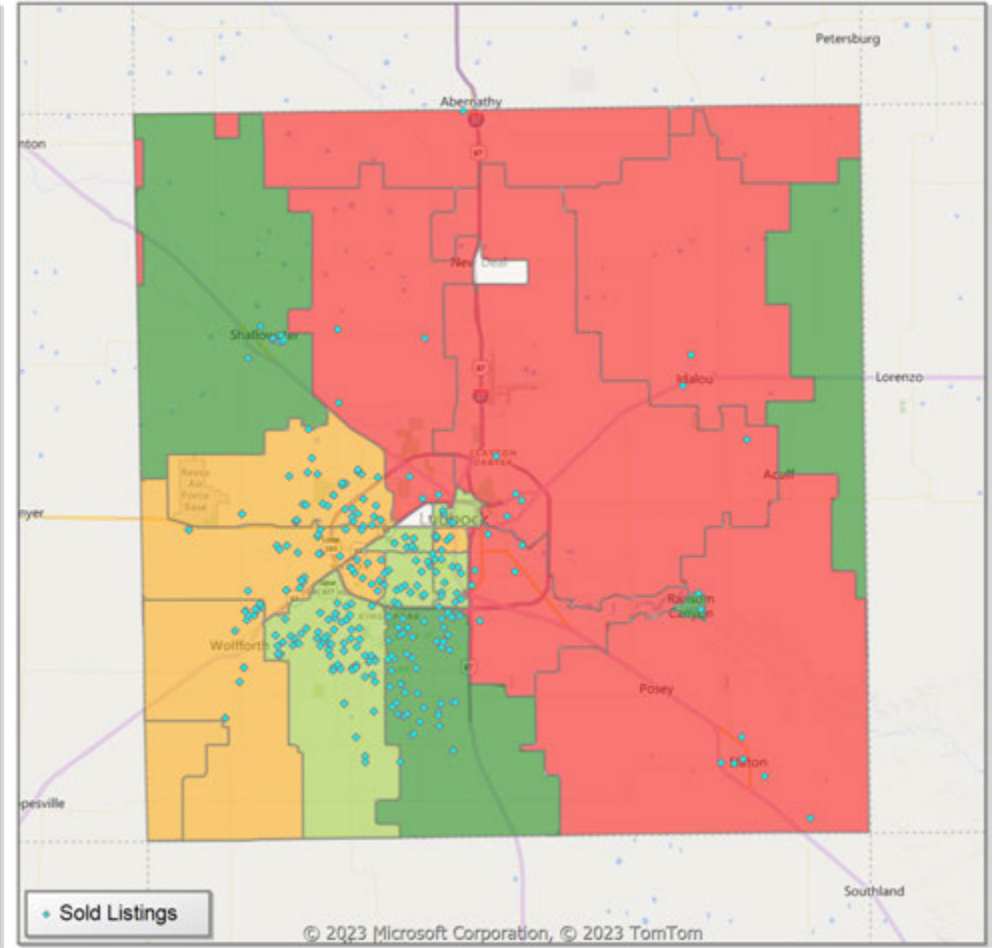


**Comparison By Zip Code\* in Lubbock County**

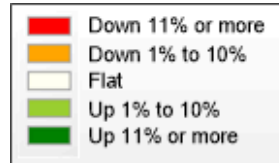
**Residential\*\* Closed Sales  
YoY Percentage Change**



**Residential\*\* Avg Close Price Per SqFt  
YoY Percentage Change**

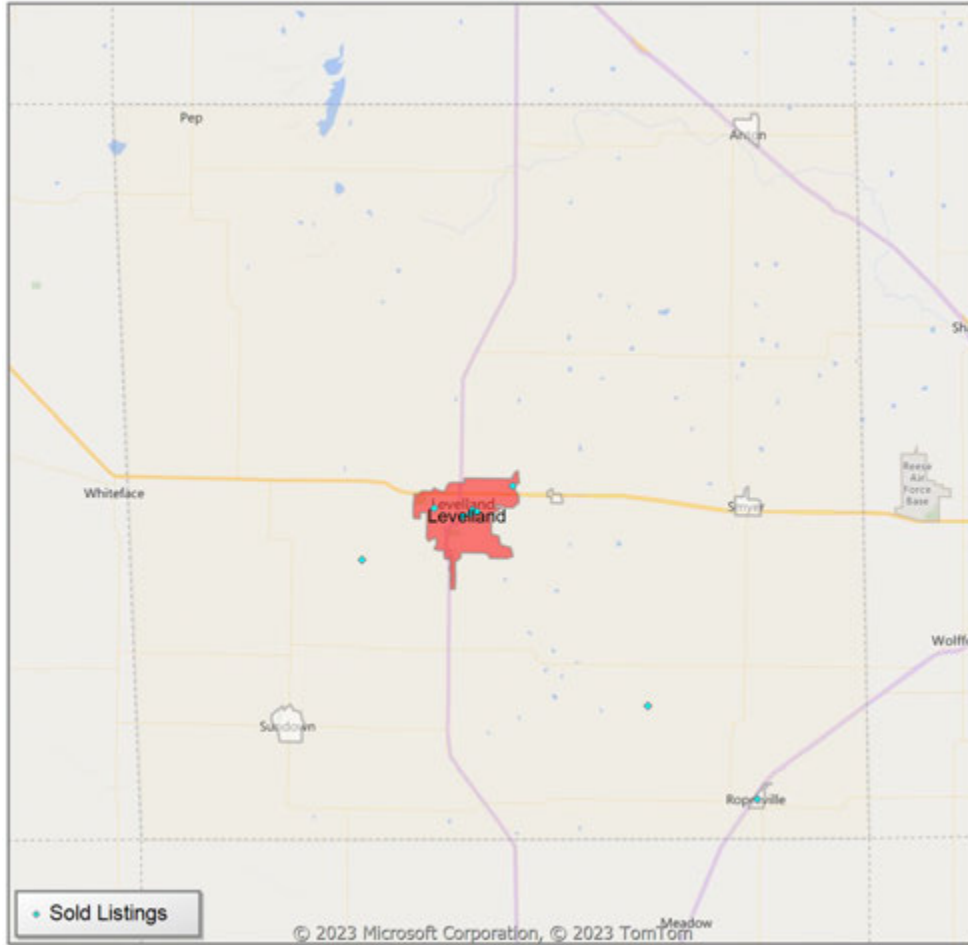


\* US Census Zip Code Tabulation Area  
\*\* Residential includes Single Family, Condominium and Townhouse.

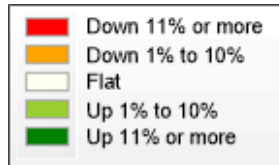
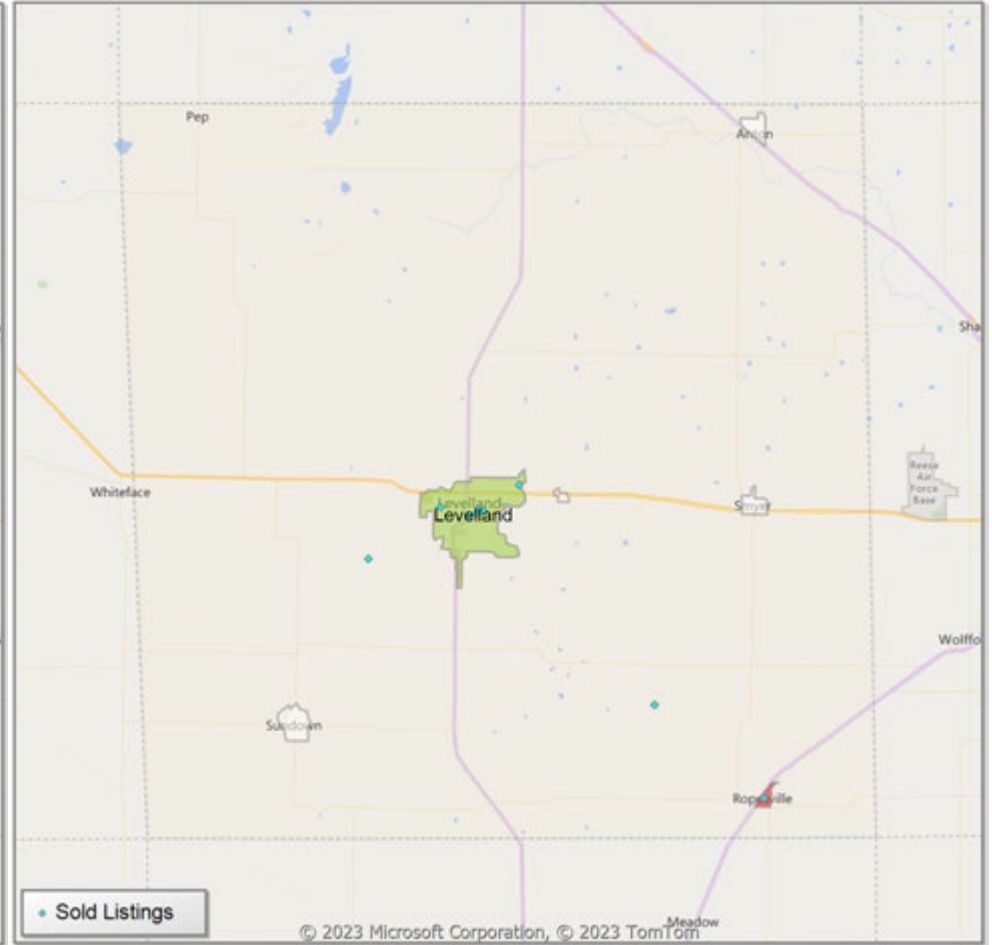


**Comparison By Local Market Area\* in Hockley County**

**Residential\*\* Closed Sales  
YoY Percentage Change**



**Residential\*\* Avg Close Price Per SqFt  
YoY Percentage Change**

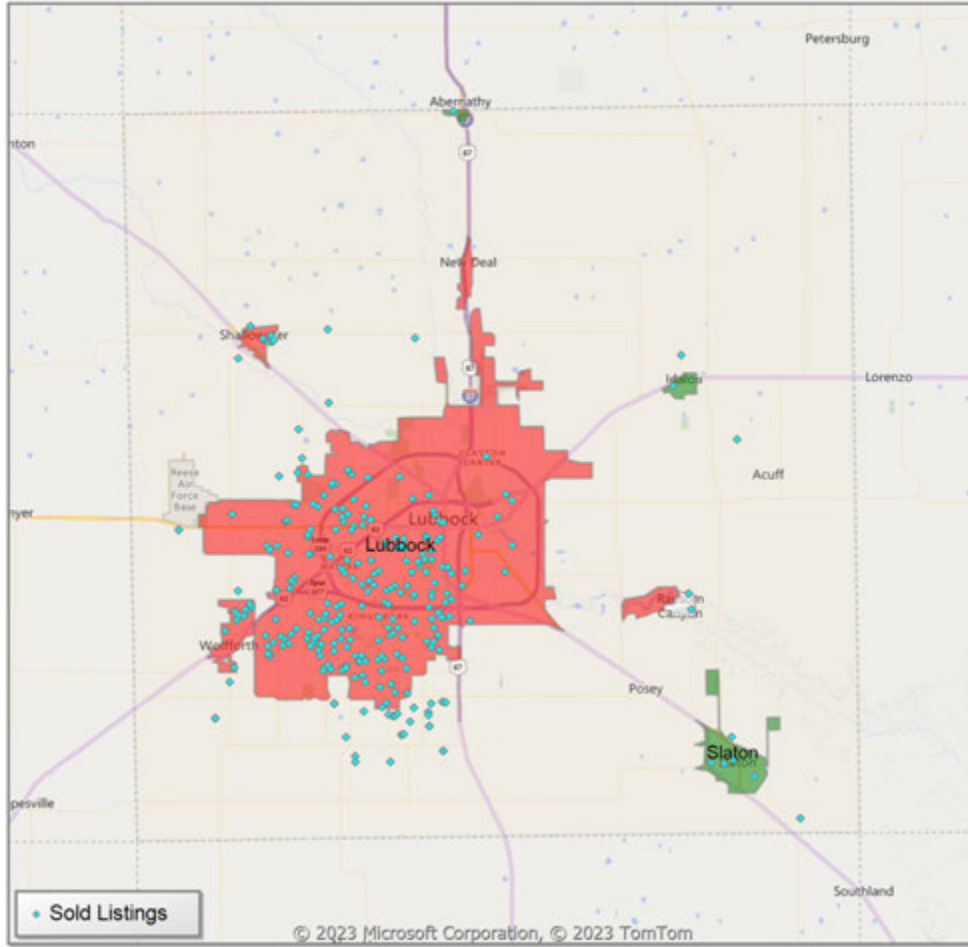


\* Census Place Group

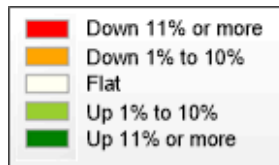
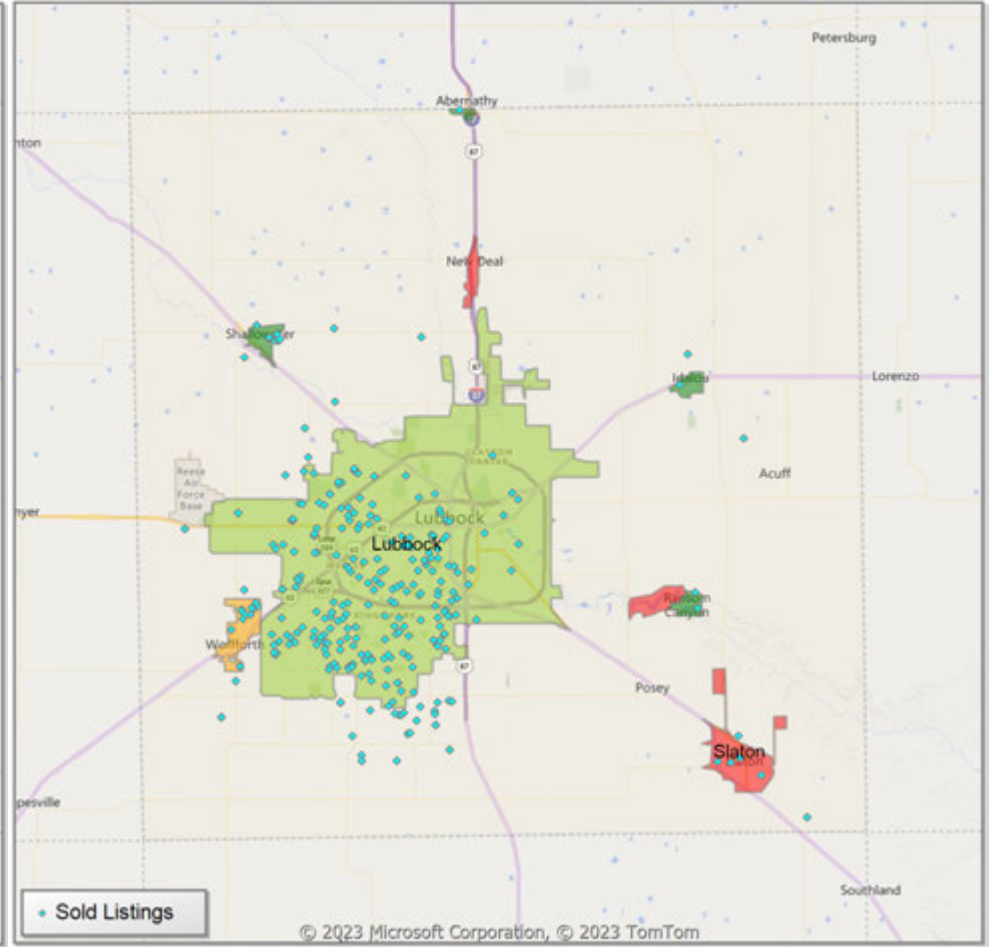
\*\* Residential includes Single Family, Condominium and Townhouse.

**Comparison By Local Market Area\* in Lubbock County**

**Residential\*\* Closed Sales  
YoY Percentage Change**



**Residential\*\* Avg Close Price Per SqFt  
YoY Percentage Change**



\* Census Place Group

\*\* Residential includes Single Family, Condominium and Townhouse.



Market Analysis By Local Market Area\*: Abernathy

Property Type	Closed Sales**	YoY%	Dollar Volume	YoY%	Average Price	YoY%	Median Price	YoY%	Price/Sqft	YoY%	DOM	New Listings	Active Listings	Pending Sales	Months Inventory	Close To OLP
<b>All(New and Existing)</b>																
Residential (SF/COND/TH)	3	100.0%	\$550,000	100.0%	\$183,333	100.0%	\$175,000	100.0%	\$76	100.0%	35	4	10	2	5.2	80.7%
YTD:	18	-21.7%	\$3,733,300	-5.1%	\$207,406	21.3%	\$205,650	18.9%	\$102	7.2%	34	32	6	18		89.9%
Single Family	3	100.0%	\$550,000	100.0%	\$183,333	100.0%	\$175,000	100.0%	\$76	100.0%	35	4	10	2	5.2	80.7%
YTD:	18	-21.7%	\$3,733,300	-5.1%	\$207,406	21.3%	\$205,650	18.9%	\$102	7.2%	34	32	6	18		89.9%
Townhouse	-	0.0%	-	0.0%	-	0.0%	-	0.0%	-	0.0%	-	-	-	-	-	0.0%
YTD:	-	0.0%	-	0.0%	-	0.0%	-	0.0%	-	0.0%	-	-	-	-	-	0.0%
Condominium	-	0.0%	-	0.0%	-	0.0%	-	0.0%	-	0.0%	-	-	-	-	-	0.0%
YTD:	-	0.0%	-	0.0%	-	0.0%	-	0.0%	-	0.0%	-	-	-	-	-	0.0%
<b>Existing Home</b>																
Residential (SF/COND/TH)	3	100.0%	\$550,000	100.0%	\$183,333	100.0%	\$175,000	100.0%	\$76	100.0%	35	3	9	2	4.7	80.7%
YTD:	18	-18.2%	\$3,733,300	6.0%	\$207,406	29.5%	\$205,650	23.5%	\$102	10.7%	34	31	6	18		89.9%
Single Family	3	100.0%	\$550,000	100.0%	\$183,333	100.0%	\$175,000	100.0%	\$76	100.0%	35	3	9	2	4.7	80.7%
YTD:	18	-18.2%	\$3,733,300	6.0%	\$207,406	29.5%	\$205,650	23.5%	\$102	10.7%	34	31	6	18		89.9%
Townhouse	-	0.0%	-	0.0%	-	0.0%	-	0.0%	-	0.0%	-	-	-	-	-	0.0%
YTD:	-	0.0%	-	0.0%	-	0.0%	-	0.0%	-	0.0%	-	-	-	-	-	0.0%
Condominium	-	0.0%	-	0.0%	-	0.0%	-	0.0%	-	0.0%	-	-	-	-	-	0.0%
YTD:	-	0.0%	-	0.0%	-	0.0%	-	0.0%	-	0.0%	-	-	-	-	-	0.0%
<b>New Construction</b>																
Residential (SF/COND/TH)	-	0.0%	-	0.0%	-	0.0%	-	0.0%	-	0.0%	-	1	1	-	-	0.0%
YTD:	-	-100.0%	-	-100.0%	-	-100.0%	-	-100.0%	-	-100.0%	-	1	1	-	-	0.0%
Single Family	-	0.0%	-	0.0%	-	0.0%	-	0.0%	-	0.0%	-	1	1	-	-	0.0%
YTD:	-	-100.0%	-	-100.0%	-	-100.0%	-	-100.0%	-	-100.0%	-	1	1	-	-	0.0%
Townhouse	-	0.0%	-	0.0%	-	0.0%	-	0.0%	-	0.0%	-	-	-	-	-	0.0%
YTD:	-	0.0%	-	0.0%	-	0.0%	-	0.0%	-	0.0%	-	-	-	-	-	0.0%
Condominium	-	0.0%	-	0.0%	-	0.0%	-	0.0%	-	0.0%	-	-	-	-	-	0.0%
YTD:	-	0.0%	-	0.0%	-	0.0%	-	0.0%	-	0.0%	-	-	-	-	-	0.0%

\* Local Market Area Code: 2; Type: Census Place Group  
 \*\* Closed Sale counts for most recent 3 months are Preliminary.

Market Analysis By Local Market Area\*: Anton

Property Type	Closed Sales**	YoY%	Dollar Volume	YoY%	Average Price	YoY%	Median Price	YoY%	Price/Sqft	YoY%	DOM	New Listings	Active Listings	Pending Sales	Months Inventory	Close To OLP
<b>All(New and Existing)</b>																
Residential (SF/COND/TH)	-	0.0%	-	0.0%	-	0.0%	-	0.0%	-	0.0%	-	1	7	1	10.5	0.0%
YTD:	6	20.0%	\$607,700	-29.0%	\$101,283	-40.8%	\$94,250	-55.1%	\$70	1.5%	48	16	4	6		98.5%
Single Family	-	0.0%	-	0.0%	-	0.0%	-	0.0%	-	0.0%	-	1	7	1	10.5	0.0%
YTD:	6	20.0%	\$607,700	-29.0%	\$101,283	-40.8%	\$94,250	-55.1%	\$70	1.5%	48	16	4	6		98.5%
Townhouse	-	0.0%	-	0.0%	-	0.0%	-	0.0%	-	0.0%	-	-	-	-	-	0.0%
YTD:	-	0.0%	-	0.0%	-	0.0%	-	0.0%	-	0.0%	-	-	-	-	-	0.0%
Condominium	-	0.0%	-	0.0%	-	0.0%	-	0.0%	-	0.0%	-	-	-	-	-	0.0%
YTD:	-	0.0%	-	0.0%	-	0.0%	-	0.0%	-	0.0%	-	-	-	-	-	0.0%
<b>Existing Home</b>																
Residential (SF/COND/TH)	-	0.0%	-	0.0%	-	0.0%	-	0.0%	-	0.0%	-	1	7	1	10.5	0.0%
YTD:	6	20.0%	\$607,700	-29.0%	\$101,283	-40.8%	\$94,250	-55.1%	\$70	1.5%	48	16	4	6		98.5%
Single Family	-	0.0%	-	0.0%	-	0.0%	-	0.0%	-	0.0%	-	1	7	1	10.5	0.0%
YTD:	6	20.0%	\$607,700	-29.0%	\$101,283	-40.8%	\$94,250	-55.1%	\$70	1.5%	48	16	4	6		98.5%
Townhouse	-	0.0%	-	0.0%	-	0.0%	-	0.0%	-	0.0%	-	-	-	-	-	0.0%
YTD:	-	0.0%	-	0.0%	-	0.0%	-	0.0%	-	0.0%	-	-	-	-	-	0.0%
Condominium	-	0.0%	-	0.0%	-	0.0%	-	0.0%	-	0.0%	-	-	-	-	-	0.0%
YTD:	-	0.0%	-	0.0%	-	0.0%	-	0.0%	-	0.0%	-	-	-	-	-	0.0%
<b>New Construction</b>																
Residential (SF/COND/TH)	-	0.0%	-	0.0%	-	0.0%	-	0.0%	-	0.0%	-	-	-	-	-	0.0%
YTD:	-	0.0%	-	0.0%	-	0.0%	-	0.0%	-	0.0%	-	-	-	-	-	0.0%
Single Family	-	0.0%	-	0.0%	-	0.0%	-	0.0%	-	0.0%	-	-	-	-	-	0.0%
YTD:	-	0.0%	-	0.0%	-	0.0%	-	0.0%	-	0.0%	-	-	-	-	-	0.0%
Townhouse	-	0.0%	-	0.0%	-	0.0%	-	0.0%	-	0.0%	-	-	-	-	-	0.0%
YTD:	-	0.0%	-	0.0%	-	0.0%	-	0.0%	-	0.0%	-	-	-	-	-	0.0%
Condominium	-	0.0%	-	0.0%	-	0.0%	-	0.0%	-	0.0%	-	-	-	-	-	0.0%
YTD:	-	0.0%	-	0.0%	-	0.0%	-	0.0%	-	0.0%	-	-	-	-	-	0.0%

\* Local Market Area Code: 1014; Type: Census Place Group  
 \*\* Closed Sale counts for most recent 3 months are Preliminary.

Market Analysis By Local Market Area\*: Buffalo Springs

Property Type	Closed Sales**	YoY%	Dollar Volume	YoY%	Average Price	YoY%	Median Price	YoY%	Price/Sqft	YoY%	DOM	New Listings	Active Listings	Pending Sales	Months Inventory	Close To OLP
<b>All(New and Existing)</b>																
Residential (SF/COND/TH)	-	-100.0%	-	-100.0%	-	-100.0%	-	-100.0%	-	-100.0%	-	2	4	-	3.4	0.0%
<b>YTD:</b>	8	-52.9%	\$2,666,000	-53.4%	\$333,250	-1.0%	\$300,000	11.1%	\$171	1.0%	95	13	3	8		96.2%
Single Family	-	-100.0%	-	-100.0%	-	-100.0%	-	-100.0%	-	-100.0%	-	2	4	-	3.4	0.0%
<b>YTD:</b>	8	-52.9%	\$2,666,000	-53.4%	\$333,250	-1.0%	\$300,000	11.1%	\$171	1.0%	95	13	3	8		96.2%
Townhouse	-	0.0%	-	0.0%	-	0.0%	-	0.0%	-	0.0%	-	-	-	-	-	0.0%
<b>YTD:</b>	-	0.0%	-	0.0%	-	0.0%	-	0.0%	-	0.0%	-	-	-	-	-	0.0%
Condominium	-	0.0%	-	0.0%	-	0.0%	-	0.0%	-	0.0%	-	-	-	-	-	0.0%
<b>YTD:</b>	-	0.0%	-	0.0%	-	0.0%	-	0.0%	-	0.0%	-	-	-	-	-	0.0%
<b>Existing Home</b>																
Residential (SF/COND/TH)	-	-100.0%	-	-100.0%	-	-100.0%	-	-100.0%	-	-100.0%	-	2	4	-	3.4	0.0%
<b>YTD:</b>	8	-52.9%	\$2,666,000	-53.4%	\$333,250	-1.0%	\$300,000	11.1%	\$171	1.0%	95	13	3	8		96.2%
Single Family	-	-100.0%	-	-100.0%	-	-100.0%	-	-100.0%	-	-100.0%	-	2	4	-	3.4	0.0%
<b>YTD:</b>	8	-52.9%	\$2,666,000	-53.4%	\$333,250	-1.0%	\$300,000	11.1%	\$171	1.0%	95	13	3	8		96.2%
Townhouse	-	0.0%	-	0.0%	-	0.0%	-	0.0%	-	0.0%	-	-	-	-	-	0.0%
<b>YTD:</b>	-	0.0%	-	0.0%	-	0.0%	-	0.0%	-	0.0%	-	-	-	-	-	0.0%
Condominium	-	0.0%	-	0.0%	-	0.0%	-	0.0%	-	0.0%	-	-	-	-	-	0.0%
<b>YTD:</b>	-	0.0%	-	0.0%	-	0.0%	-	0.0%	-	0.0%	-	-	-	-	-	0.0%
<b>New Construction</b>																
Residential (SF/COND/TH)	-	0.0%	-	0.0%	-	0.0%	-	0.0%	-	0.0%	-	-	-	-	-	0.0%
<b>YTD:</b>	-	0.0%	-	0.0%	-	0.0%	-	0.0%	-	0.0%	-	-	-	-	-	0.0%
Single Family	-	0.0%	-	0.0%	-	0.0%	-	0.0%	-	0.0%	-	-	-	-	-	0.0%
<b>YTD:</b>	-	0.0%	-	0.0%	-	0.0%	-	0.0%	-	0.0%	-	-	-	-	-	0.0%
Townhouse	-	0.0%	-	0.0%	-	0.0%	-	0.0%	-	0.0%	-	-	-	-	-	0.0%
<b>YTD:</b>	-	0.0%	-	0.0%	-	0.0%	-	0.0%	-	0.0%	-	-	-	-	-	0.0%
Condominium	-	0.0%	-	0.0%	-	0.0%	-	0.0%	-	0.0%	-	-	-	-	-	0.0%
<b>YTD:</b>	-	0.0%	-	0.0%	-	0.0%	-	0.0%	-	0.0%	-	-	-	-	-	0.0%

\* Local Market Area Code: 135; Type: Census Place Group  
 \*\* Closed Sale counts for most recent 3 months are Preliminary.

Market Analysis By Local Market Area\*: Idalou

Property Type	Closed Sales**	YoY%	Dollar Volume	YoY%	Average Price	YoY%	Median Price	YoY%	Price/Sqft	YoY%	DOM	New Listings	Active Listings	Pending Sales	Months Inventory	Close To OLP
<b>All(New and Existing)</b>																
Residential (SF/COND/TH)	1	100.0%	\$215,000	100.0%	\$215,000	100.0%	\$215,000	100.0%	\$118	100.0%	19	3	4	2	3.7	95.6%
YTD:	10	-50.0%	\$2,513,250	-40.5%	\$251,325	19.0%	\$252,500	32.9%	\$132	9.9%	62	15	2	12		93.8%
Single Family	1	100.0%	\$215,000	100.0%	\$215,000	100.0%	\$215,000	100.0%	\$118	100.0%	19	3	4	2	3.7	95.6%
YTD:	10	-50.0%	\$2,513,250	-40.5%	\$251,325	19.0%	\$252,500	32.9%	\$132	9.9%	62	15	2	12		93.8%
Townhouse	-	0.0%	-	0.0%	-	0.0%	-	0.0%	-	0.0%	-	-	-	-	-	0.0%
YTD:	-	0.0%	-	0.0%	-	0.0%	-	0.0%	-	0.0%	-	-	-	-	-	0.0%
Condominium	-	0.0%	-	0.0%	-	0.0%	-	0.0%	-	0.0%	-	-	-	-	-	0.0%
YTD:	-	0.0%	-	0.0%	-	0.0%	-	0.0%	-	0.0%	-	-	-	-	-	0.0%
<b>Existing Home</b>																
Residential (SF/COND/TH)	1	100.0%	\$215,000	100.0%	\$215,000	100.0%	\$215,000	100.0%	\$118	100.0%	19	3	4	2	4.0	95.6%
YTD:	9	-55.0%	\$2,273,250	-46.2%	\$252,583	19.6%	\$265,000	39.5%	\$126	4.7%	56	15	2	11		93.3%
Single Family	1	100.0%	\$215,000	100.0%	\$215,000	100.0%	\$215,000	100.0%	\$118	100.0%	19	3	4	2	4.0	95.6%
YTD:	9	-55.0%	\$2,273,250	-46.2%	\$252,583	19.6%	\$265,000	39.5%	\$126	4.7%	56	15	2	11		93.3%
Townhouse	-	0.0%	-	0.0%	-	0.0%	-	0.0%	-	0.0%	-	-	-	-	-	0.0%
YTD:	-	0.0%	-	0.0%	-	0.0%	-	0.0%	-	0.0%	-	-	-	-	-	0.0%
Condominium	-	0.0%	-	0.0%	-	0.0%	-	0.0%	-	0.0%	-	-	-	-	-	0.0%
YTD:	-	0.0%	-	0.0%	-	0.0%	-	0.0%	-	0.0%	-	-	-	-	-	0.0%
<b>New Construction</b>																
Residential (SF/COND/TH)	-	0.0%	-	0.0%	-	0.0%	-	0.0%	-	0.0%	-	-	-	-	-	0.0%
YTD:	1	100.0%	\$240,000	100.0%	\$240,000	100.0%	\$240,000	100.0%	\$188	100.0%	117	-	-	1		98.0%
Single Family	-	0.0%	-	0.0%	-	0.0%	-	0.0%	-	0.0%	-	-	-	-	-	0.0%
YTD:	1	100.0%	\$240,000	100.0%	\$240,000	100.0%	\$240,000	100.0%	\$188	100.0%	117	-	-	1		98.0%
Townhouse	-	0.0%	-	0.0%	-	0.0%	-	0.0%	-	0.0%	-	-	-	-	-	0.0%
YTD:	-	0.0%	-	0.0%	-	0.0%	-	0.0%	-	0.0%	-	-	-	-	-	0.0%
Condominium	-	0.0%	-	0.0%	-	0.0%	-	0.0%	-	0.0%	-	-	-	-	-	0.0%
YTD:	-	0.0%	-	0.0%	-	0.0%	-	0.0%	-	0.0%	-	-	-	-	-	0.0%

\* Local Market Area Code: 456; Type: Census Place Group  
 \*\* Closed Sale counts for most recent 3 months are Preliminary.



Market Analysis By Local Market Area\*: Levelland

Property Type	Closed Sales**	YoY%	Dollar Volume	YoY%	Average Price	YoY%	Median Price	YoY%	Price/Sqft	YoY%	DOM	New Listings	Active Listings	Pending Sales	Months Inventory	Close To OLP
<b>All(New and Existing)</b>																
Residential (SF/COND/TH)	6	-50.0%	\$689,500	-65.4%	\$114,917	-30.8%	\$119,750	-27.9%	\$86	1.2%	37	19	49	11	5.1	92.8%
<b>YTD:</b>	94	-4.1%	\$18,310,200	3.4%	\$194,789	7.8%	\$190,000	10.1%	\$97	5.9%	54	180	38	101		94.7%
Single Family	6	-50.0%	\$689,500	-65.4%	\$114,917	-30.8%	\$119,750	-27.9%	\$86	1.2%	37	19	48	11	5.0	92.8%
<b>YTD:</b>	94	-3.1%	\$18,310,200	4.5%	\$194,789	7.8%	\$190,000	11.8%	\$97	6.0%	54	179	38	101		94.7%
Townhouse	-	0.0%	-	0.0%	-	0.0%	-	0.0%	-	0.0%	-	-	-	-	-	0.0%
<b>YTD:</b>	-	-100.0%	-	-100.0%	-	-100.0%	-	-100.0%	-	-100.0%	-	-	-	-	-	0.0%
Condominium	-	0.0%	-	0.0%	-	0.0%	-	0.0%	-	0.0%	-	-	1	-	-	0.0%
<b>YTD:</b>	-	0.0%	-	0.0%	-	0.0%	-	0.0%	-	0.0%	-	1	1	-	-	0.0%
<b>Existing Home</b>																
Residential (SF/COND/TH)	6	-50.0%	\$689,500	-65.4%	\$114,917	-30.8%	\$119,750	-27.9%	\$86	1.2%	37	19	48	11	5.0	92.8%
<b>YTD:</b>	94	-4.1%	\$18,310,200	3.4%	\$194,789	7.8%	\$190,000	10.1%	\$97	5.9%	54	177	37	101		94.7%
Single Family	6	-50.0%	\$689,500	-65.4%	\$114,917	-30.8%	\$119,750	-27.9%	\$86	1.2%	37	19	47	11	4.9	92.8%
<b>YTD:</b>	94	-3.1%	\$18,310,200	4.5%	\$194,789	7.8%	\$190,000	11.8%	\$97	6.0%	54	176	37	101		94.7%
Townhouse	-	0.0%	-	0.0%	-	0.0%	-	0.0%	-	0.0%	-	-	-	-	-	0.0%
<b>YTD:</b>	-	-100.0%	-	-100.0%	-	-100.0%	-	-100.0%	-	-100.0%	-	-	-	-	-	0.0%
Condominium	-	0.0%	-	0.0%	-	0.0%	-	0.0%	-	0.0%	-	-	1	-	-	0.0%
<b>YTD:</b>	-	0.0%	-	0.0%	-	0.0%	-	0.0%	-	0.0%	-	1	1	-	-	0.0%
<b>New Construction</b>																
Residential (SF/COND/TH)	-	0.0%	-	0.0%	-	0.0%	-	0.0%	-	0.0%	-	-	1	-	-	0.0%
<b>YTD:</b>	-	0.0%	-	0.0%	-	0.0%	-	0.0%	-	0.0%	-	3	1	-	-	0.0%
Single Family	-	0.0%	-	0.0%	-	0.0%	-	0.0%	-	0.0%	-	-	1	-	-	0.0%
<b>YTD:</b>	-	0.0%	-	0.0%	-	0.0%	-	0.0%	-	0.0%	-	3	1	-	-	0.0%
Townhouse	-	0.0%	-	0.0%	-	0.0%	-	0.0%	-	0.0%	-	-	-	-	-	0.0%
<b>YTD:</b>	-	0.0%	-	0.0%	-	0.0%	-	0.0%	-	0.0%	-	-	-	-	-	0.0%
Condominium	-	0.0%	-	0.0%	-	0.0%	-	0.0%	-	0.0%	-	-	-	-	-	0.0%
<b>YTD:</b>	-	0.0%	-	0.0%	-	0.0%	-	0.0%	-	0.0%	-	-	-	-	-	0.0%

\* Local Market Area Code: 220; Type: Census Place Group  
 \*\* Closed Sale counts for most recent 3 months are Preliminary.

Market Analysis By Local Market Area\*: Lubbock

Property Type	Closed Sales**	YoY%	Dollar Volume	YoY%	Average Price	YoY%	Median Price	YoY%	Price/Sqft	YoY%	DOM	New Listings	Active Listings	Pending Sales	Months Inventory	Close To OLP
<b>All(New and Existing)</b>																
Residential (SF/COND/TH)	240	-13.4%	\$63,550,070	-8.9%	\$264,792	5.2%	\$220,000	0.0%	\$133	3.1%	34	484	836	256	3.0	95.7%
YTD:	2,682	-5.9%	\$695,679,451	-6.9%	\$259,388	-1.1%	\$227,750	1.2%	\$132	1.6%	32	4,427	669	2,750		96.9%
Single Family	225	-17.3%	\$60,454,796	-11.9%	\$268,688	6.5%	\$221,000	-0.1%	\$132	2.6%	32	467	794	244	2.9	95.9%
YTD:	2,593	-6.3%	\$676,197,783	-7.7%	\$260,778	-1.4%	\$230,000	0.8%	\$132	1.6%	32	4,235	629	2,664		97.0%
Townhouse	13	160.0%	\$2,768,130	152.8%	\$212,933	-2.8%	\$199,900	-0.1%	\$143	12.3%	71	16	41	10	5.5	92.4%
YTD:	73	30.4%	\$14,927,126	33.4%	\$204,481	2.3%	\$200,000	2.6%	\$133	4.7%	41	171	36	68		95.9%
Condominium	2	100.0%	\$370,000	100.0%	\$185,000	100.0%	\$185,000	100.0%	\$139	100.0%	10	1	1	2	0.5	100.0%
YTD:	16	-36.0%	\$4,574,000	10.5%	\$285,875	72.7%	\$241,000	79.2%	\$135	2.7%	13	21	3	18		96.4%
<b>Existing Home</b>																
Residential (SF/COND/TH)	205	-17.0%	\$53,543,280	-8.6%	\$261,187	10.2%	\$215,000	0.0%	\$129	4.2%	31	386	652	216	2.7	95.5%
YTD:	2,325	-9.0%	\$571,966,777	-10.6%	\$246,007	-1.8%	\$216,000	-0.9%	\$126	1.4%	28	3,650	480	2,384		96.8%
Single Family	201	-17.3%	\$52,706,401	-8.8%	\$262,221	10.2%	\$216,000	0.5%	\$128	3.9%	31	377	634	214	2.7	95.5%
YTD:	2,267	-9.0%	\$558,968,798	-11.0%	\$246,568	-2.2%	\$217,000	-1.4%	\$126	1.3%	28	3,569	467	2,332		96.8%
Townhouse	1	-75.0%	\$215,000	-71.4%	\$215,000	14.5%	\$215,000	22.9%	\$134	21.5%	49	8	17	-	3.8	93.5%
YTD:	41	5.1%	\$8,184,696	8.9%	\$199,627	3.6%	\$185,000	-5.1%	\$127	6.5%	35	60	9	34		97.9%
Condominium	2	100.0%	\$370,000	100.0%	\$185,000	100.0%	\$185,000	100.0%	\$139	100.0%	10	1	1	2	0.5	100.0%
YTD:	16	-36.0%	\$4,574,000	10.5%	\$285,875	72.7%	\$241,000	79.2%	\$135	2.7%	13	21	3	18		96.4%
<b>New Construction</b>																
Residential (SF/COND/TH)	36	20.0%	\$10,276,883	-8.2%	\$285,469	-23.5%	\$251,000	-15.2%	\$158	-9.3%	53	98	184	40	5.0	96.9%
YTD:	358	21.8%	\$123,971,913	15.1%	\$346,290	-5.5%	\$301,675	-4.2%	\$167	-3.4%	60	777	188	366		97.7%
Single Family	23	-20.7%	\$7,477,943	-31.1%	\$325,128	-13.1%	\$302,945	5.6%	\$167	-4.3%	42	90	160	30	4.8	99.5%
YTD:	325	17.3%	\$116,896,584	12.4%	\$359,682	-4.2%	\$317,925	-0.3%	\$169	-2.9%	62	666	162	332		98.2%
Townhouse	12	1100.0%	\$2,553,130	642.2%	\$212,761	-38.2%	\$199,900	-41.9%	\$143	-25.9%	72	8	24	10	8.0	92.3%
YTD:	32	88.2%	\$6,742,430	83.4%	\$210,701	-2.6%	\$204,750	5.0%	\$141	-3.0%	48	111	26	34		93.2%
Condominium	-	0.0%	-	0.0%	-	0.0%	-	0.0%	-	0.0%	-	-	-	-	-	0.0%
YTD:	-	0.0%	-	0.0%	-	0.0%	-	0.0%	-	0.0%	-	-	-	-	-	0.0%

\* Local Market Area Code: 596; Type: Census Place Group  
 \*\* Closed Sale counts for most recent 3 months are Preliminary.

Market Analysis By Local Market Area\*: New Deal

Property Type	Closed Sales**	YoY%	Dollar Volume	YoY%	Average Price	YoY%	Median Price	YoY%	Price/Sqft	YoY%	DOM	New Listings	Active Listings	Pending Sales	Months Inventory	Close To OLP
<b>All(New and Existing)</b>																
Residential (SF/COND/TH)	-	-100.0%	-	-100.0%	-	-100.0%	-	-100.0%	-	-100.0%	-	-	1	1	4.0	0.0%
YTD:	3	-25.0%	\$632,800	12.8%	\$210,933	50.4%	\$194,900	36.8%	\$103	11.5%	60	4	1	4		93.0%
Single Family	-	-100.0%	-	-100.0%	-	-100.0%	-	-100.0%	-	-100.0%	-	-	1	1	4.0	0.0%
YTD:	3	-25.0%	\$632,800	12.8%	\$210,933	50.4%	\$194,900	36.8%	\$103	11.5%	60	4	1	4		93.0%
Townhouse	-	0.0%	-	0.0%	-	0.0%	-	0.0%	-	0.0%	-	-	-	-	-	0.0%
YTD:	-	0.0%	-	0.0%	-	0.0%	-	0.0%	-	0.0%	-	-	-	-	-	0.0%
Condominium	-	0.0%	-	0.0%	-	0.0%	-	0.0%	-	0.0%	-	-	-	-	-	0.0%
YTD:	-	0.0%	-	0.0%	-	0.0%	-	0.0%	-	0.0%	-	-	-	-	-	0.0%
<b>Existing Home</b>																
Residential (SF/COND/TH)	-	-100.0%	-	-100.0%	-	-100.0%	-	-100.0%	-	-100.0%	-	-	1	1	4.0	0.0%
YTD:	3	-25.0%	\$632,800	12.8%	\$210,933	50.4%	\$194,900	36.8%	\$103	11.5%	60	4	1	4		93.0%
Single Family	-	-100.0%	-	-100.0%	-	-100.0%	-	-100.0%	-	-100.0%	-	-	1	1	4.0	0.0%
YTD:	3	-25.0%	\$632,800	12.8%	\$210,933	50.4%	\$194,900	36.8%	\$103	11.5%	60	4	1	4		93.0%
Townhouse	-	0.0%	-	0.0%	-	0.0%	-	0.0%	-	0.0%	-	-	-	-	-	0.0%
YTD:	-	0.0%	-	0.0%	-	0.0%	-	0.0%	-	0.0%	-	-	-	-	-	0.0%
Condominium	-	0.0%	-	0.0%	-	0.0%	-	0.0%	-	0.0%	-	-	-	-	-	0.0%
YTD:	-	0.0%	-	0.0%	-	0.0%	-	0.0%	-	0.0%	-	-	-	-	-	0.0%
<b>New Construction</b>																
Residential (SF/COND/TH)	-	0.0%	-	0.0%	-	0.0%	-	0.0%	-	0.0%	-	-	-	-	-	0.0%
YTD:	-	0.0%	-	0.0%	-	0.0%	-	0.0%	-	0.0%	-	-	-	-	-	0.0%
Single Family	-	0.0%	-	0.0%	-	0.0%	-	0.0%	-	0.0%	-	-	-	-	-	0.0%
YTD:	-	0.0%	-	0.0%	-	0.0%	-	0.0%	-	0.0%	-	-	-	-	-	0.0%
Townhouse	-	0.0%	-	0.0%	-	0.0%	-	0.0%	-	0.0%	-	-	-	-	-	0.0%
YTD:	-	0.0%	-	0.0%	-	0.0%	-	0.0%	-	0.0%	-	-	-	-	-	0.0%
Condominium	-	0.0%	-	0.0%	-	0.0%	-	0.0%	-	0.0%	-	-	-	-	-	0.0%
YTD:	-	0.0%	-	0.0%	-	0.0%	-	0.0%	-	0.0%	-	-	-	-	-	0.0%

\* Local Market Area Code: 700; Type: Census Place Group  
 \*\* Closed Sale counts for most recent 3 months are Preliminary.

Market Analysis By Local Market Area\*: Ransom Canyon

Property Type	Closed Sales**	YoY%	Dollar Volume	YoY%	Average Price	YoY%	Median Price	YoY%	Price/Sqft	YoY%	DOM	New Listings	Active Listings	Pending Sales	Months Inventory	Close To OLP
<b>All(New and Existing)</b>																
Residential (SF/COND/TH)	2	0.0%	\$735,000	-17.9%	\$367,500	-17.9%	\$367,500	-17.9%	\$176	51.5%	13	4	10	-	6.0	98.8%
<b>YTD:</b>	17	-10.5%	\$7,228,500	-9.1%	\$425,206	1.6%	\$379,000	-9.8%	\$165	4.3%	54	30	5	18		93.9%
Single Family	2	0.0%	\$735,000	-17.9%	\$367,500	-17.9%	\$367,500	-17.9%	\$176	51.5%	13	4	10	-	6.0	98.8%
<b>YTD:</b>	17	-10.5%	\$7,228,500	-9.1%	\$425,206	1.6%	\$379,000	-9.8%	\$165	4.3%	54	30	5	18		93.9%
Townhouse	-	0.0%	-	0.0%	-	0.0%	-	0.0%	-	0.0%	-	-	-	-	-	0.0%
<b>YTD:</b>	-	0.0%	-	0.0%	-	0.0%	-	0.0%	-	0.0%	-	-	-	-	-	0.0%
Condominium	-	0.0%	-	0.0%	-	0.0%	-	0.0%	-	0.0%	-	-	-	-	-	0.0%
<b>YTD:</b>	-	0.0%	-	0.0%	-	0.0%	-	0.0%	-	0.0%	-	-	-	-	-	0.0%
<b>Existing Home</b>																
Residential (SF/COND/TH)	2	0.0%	\$735,000	-17.9%	\$367,500	-17.9%	\$367,500	-17.9%	\$176	51.5%	13	4	10	-	6.3	98.8%
<b>YTD:</b>	16	-11.1%	\$6,858,500	-8.8%	\$428,656	2.6%	\$383,500	-7.6%	\$165	4.4%	38	30	4	17		97.0%
Single Family	2	0.0%	\$735,000	-17.9%	\$367,500	-17.9%	\$367,500	-17.9%	\$176	51.5%	13	4	10	-	6.3	98.8%
<b>YTD:</b>	16	-11.1%	\$6,858,500	-8.8%	\$428,656	2.6%	\$383,500	-7.6%	\$165	4.4%	38	30	4	17		97.0%
Townhouse	-	0.0%	-	0.0%	-	0.0%	-	0.0%	-	0.0%	-	-	-	-	-	0.0%
<b>YTD:</b>	-	0.0%	-	0.0%	-	0.0%	-	0.0%	-	0.0%	-	-	-	-	-	0.0%
Condominium	-	0.0%	-	0.0%	-	0.0%	-	0.0%	-	0.0%	-	-	-	-	-	0.0%
<b>YTD:</b>	-	0.0%	-	0.0%	-	0.0%	-	0.0%	-	0.0%	-	-	-	-	-	0.0%
<b>New Construction</b>																
Residential (SF/COND/TH)	-	0.0%	-	0.0%	-	0.0%	-	0.0%	-	0.0%	-	-	-	-	-	0.0%
<b>YTD:</b>	1	0.0%	\$370,000	-15.0%	\$370,000	-15.0%	\$370,000	-15.0%	\$173	2.5%	309	-	1	1		44.6%
Single Family	-	0.0%	-	0.0%	-	0.0%	-	0.0%	-	0.0%	-	-	-	-	-	0.0%
<b>YTD:</b>	1	0.0%	\$370,000	-15.0%	\$370,000	-15.0%	\$370,000	-15.0%	\$173	2.5%	309	-	1	1		44.6%
Townhouse	-	0.0%	-	0.0%	-	0.0%	-	0.0%	-	0.0%	-	-	-	-	-	0.0%
<b>YTD:</b>	-	0.0%	-	0.0%	-	0.0%	-	0.0%	-	0.0%	-	-	-	-	-	0.0%
Condominium	-	0.0%	-	0.0%	-	0.0%	-	0.0%	-	0.0%	-	-	-	-	-	0.0%
<b>YTD:</b>	-	0.0%	-	0.0%	-	0.0%	-	0.0%	-	0.0%	-	-	-	-	-	0.0%

\* Local Market Area Code: 826; Type: Census Place Group  
 \*\* Closed Sale counts for most recent 3 months are Preliminary.



Market Analysis By Local Market Area\*: Ropesville

Property Type	Closed Sales**	YoY%	Dollar Volume	YoY%	Average Price	YoY%	Median Price	YoY%	Price/Sqft	YoY%	DOM	New Listings	Active Listings	Pending Sales	Months Inventory	Close To OLP
<b>All(New and Existing)</b>																
Residential (SF/COND/TH)	1	0.0%	\$68,000	-65.1%	\$68,000	-65.1%	\$68,000	-65.1%	\$79	-34.2%	1	1	-	1	-	100.0%
YTD:	3	0.0%	\$758,000	87.2%	\$252,667	87.2%	\$225,000	36.4%	\$132	51.3%	99	3	1	4	-	97.8%
Single Family	1	0.0%	\$68,000	-65.1%	\$68,000	-65.1%	\$68,000	-65.1%	\$79	-34.2%	1	1	-	1	-	100.0%
YTD:	3	0.0%	\$758,000	87.2%	\$252,667	87.2%	\$225,000	36.4%	\$132	51.3%	99	3	1	4	-	97.8%
Townhouse	-	0.0%	-	0.0%	-	0.0%	-	0.0%	-	0.0%	-	-	-	-	-	0.0%
YTD:	-	0.0%	-	0.0%	-	0.0%	-	0.0%	-	0.0%	-	-	-	-	-	0.0%
Condominium	-	0.0%	-	0.0%	-	0.0%	-	0.0%	-	0.0%	-	-	-	-	-	0.0%
YTD:	-	0.0%	-	0.0%	-	0.0%	-	0.0%	-	0.0%	-	-	-	-	-	0.0%
<b>Existing Home</b>																
Residential (SF/COND/TH)	1	0.0%	\$68,000	-65.1%	\$68,000	-65.1%	\$68,000	-65.1%	\$79	-34.2%	1	1	-	1	-	100.0%
YTD:	2	-33.3%	\$293,000	-27.7%	\$146,500	8.5%	\$146,500	-11.2%	\$105	20.9%	33	3	-	3	-	95.0%
Single Family	1	0.0%	\$68,000	-65.1%	\$68,000	-65.1%	\$68,000	-65.1%	\$79	-34.2%	1	1	-	1	-	100.0%
YTD:	2	-33.3%	\$293,000	-27.7%	\$146,500	8.5%	\$146,500	-11.2%	\$105	20.9%	33	3	-	3	-	95.0%
Townhouse	-	0.0%	-	0.0%	-	0.0%	-	0.0%	-	0.0%	-	-	-	-	-	0.0%
YTD:	-	0.0%	-	0.0%	-	0.0%	-	0.0%	-	0.0%	-	-	-	-	-	0.0%
Condominium	-	0.0%	-	0.0%	-	0.0%	-	0.0%	-	0.0%	-	-	-	-	-	0.0%
YTD:	-	0.0%	-	0.0%	-	0.0%	-	0.0%	-	0.0%	-	-	-	-	-	0.0%
<b>New Construction</b>																
Residential (SF/COND/TH)	-	0.0%	-	0.0%	-	0.0%	-	0.0%	-	0.0%	-	-	-	-	-	0.0%
YTD:	1	100.0%	\$465,000	100.0%	\$465,000	100.0%	\$465,000	100.0%	\$185	100.0%	231	-	1	1	-	103.3%
Single Family	-	0.0%	-	0.0%	-	0.0%	-	0.0%	-	0.0%	-	-	-	-	-	0.0%
YTD:	1	100.0%	\$465,000	100.0%	\$465,000	100.0%	\$465,000	100.0%	\$185	100.0%	231	-	1	1	-	103.3%
Townhouse	-	0.0%	-	0.0%	-	0.0%	-	0.0%	-	0.0%	-	-	-	-	-	0.0%
YTD:	-	0.0%	-	0.0%	-	0.0%	-	0.0%	-	0.0%	-	-	-	-	-	0.0%
Condominium	-	0.0%	-	0.0%	-	0.0%	-	0.0%	-	0.0%	-	-	-	-	-	0.0%
YTD:	-	0.0%	-	0.0%	-	0.0%	-	0.0%	-	0.0%	-	-	-	-	-	0.0%

\* Local Market Area Code: 222; Type: Census Place Group  
 \*\* Closed Sale counts for most recent 3 months are Preliminary.

Market Analysis By Local Market Area\*: Shallowater

Property Type	Closed Sales**	YoY%	Dollar Volume	YoY%	Average Price	YoY%	Median Price	YoY%	Price/Sqft	YoY%	DOM	New Listings	Active Listings	Pending Sales	Months Inventory	Close To OLP
<b>All(New and Existing)</b>																
Residential (SF/COND/TH)	3	-57.1%	\$1,420,000	-13.3%	\$473,333	102.3%	\$460,000	104.4%	\$157	26.8%	45	6	15	1	6.2	94.2%
<b>YTD:</b>	24	-52.0%	\$8,074,534	-48.8%	\$336,439	6.7%	\$319,250	10.8%	\$143	1.2%	67	44	12	22		96.1%
Single Family	3	-57.1%	\$1,420,000	-13.3%	\$473,333	102.3%	\$460,000	104.4%	\$157	26.8%	45	6	15	1	6.2	94.2%
<b>YTD:</b>	24	-52.0%	\$8,074,534	-48.8%	\$336,439	6.7%	\$319,250	10.8%	\$143	1.2%	67	44	12	22		96.1%
Townhouse	-	0.0%	-	0.0%	-	0.0%	-	0.0%	-	0.0%	-	-	-	-	-	0.0%
<b>YTD:</b>	-	0.0%	-	0.0%	-	0.0%	-	0.0%	-	0.0%	-	-	-	-	-	0.0%
Condominium	-	0.0%	-	0.0%	-	0.0%	-	0.0%	-	0.0%	-	-	-	-	-	0.0%
<b>YTD:</b>	-	0.0%	-	0.0%	-	0.0%	-	0.0%	-	0.0%	-	-	-	-	-	0.0%
<b>Existing Home</b>																
Residential (SF/COND/TH)	3	-57.1%	\$1,420,000	-13.3%	\$473,333	102.3%	\$460,000	104.4%	\$157	26.8%	45	3	9	1	4.7	94.2%
<b>YTD:</b>	18	-53.9%	\$5,893,750	-48.0%	\$327,431	12.7%	\$306,750	25.2%	\$134	1.4%	43	32	5	16		96.3%
Single Family	3	-57.1%	\$1,420,000	-13.3%	\$473,333	102.3%	\$460,000	104.4%	\$157	26.8%	45	3	9	1	4.7	94.2%
<b>YTD:</b>	18	-53.9%	\$5,893,750	-48.0%	\$327,431	12.7%	\$306,750	25.2%	\$134	1.4%	43	32	5	16		96.3%
Townhouse	-	0.0%	-	0.0%	-	0.0%	-	0.0%	-	0.0%	-	-	-	-	-	0.0%
<b>YTD:</b>	-	0.0%	-	0.0%	-	0.0%	-	0.0%	-	0.0%	-	-	-	-	-	0.0%
Condominium	-	0.0%	-	0.0%	-	0.0%	-	0.0%	-	0.0%	-	-	-	-	-	0.0%
<b>YTD:</b>	-	0.0%	-	0.0%	-	0.0%	-	0.0%	-	0.0%	-	-	-	-	-	0.0%
<b>New Construction</b>																
Residential (SF/COND/TH)	-	0.0%	-	0.0%	-	0.0%	-	0.0%	-	0.0%	-	3	6	-	12.0	0.0%
<b>YTD:</b>	6	-45.5%	\$2,180,784	-50.9%	\$363,464	-9.9%	\$360,000	-16.1%	\$170	-2.1%	141	12	6	6		95.6%
Single Family	-	0.0%	-	0.0%	-	0.0%	-	0.0%	-	0.0%	-	3	6	-	12.0	0.0%
<b>YTD:</b>	6	-45.5%	\$2,180,784	-50.9%	\$363,464	-9.9%	\$360,000	-16.1%	\$170	-2.1%	141	12	6	6		95.6%
Townhouse	-	0.0%	-	0.0%	-	0.0%	-	0.0%	-	0.0%	-	-	-	-	-	0.0%
<b>YTD:</b>	-	0.0%	-	0.0%	-	0.0%	-	0.0%	-	0.0%	-	-	-	-	-	0.0%
Condominium	-	0.0%	-	0.0%	-	0.0%	-	0.0%	-	0.0%	-	-	-	-	-	0.0%
<b>YTD:</b>	-	0.0%	-	0.0%	-	0.0%	-	0.0%	-	0.0%	-	-	-	-	-	0.0%

\* Local Market Area Code: 925; Type: Census Place Group  
 \*\* Closed Sale counts for most recent 3 months are Preliminary.

Market Analysis By Local Market Area\*: Slaton

Property Type	Closed Sales**	YoY%	Dollar Volume	YoY%	Average Price	YoY%	Median Price	YoY%	Price/Sqft	YoY%	DOM	New Listings	Active Listings	Pending Sales	Months Inventory	Close To OLP
<b>All(New and Existing)</b>																
Residential (SF/COND/TH)	4	100.0%	\$608,000	287.3%	\$152,000	93.6%	\$151,500	93.0%	\$89	-11.7%	24	10	17	6	4.0	93.8%
YTD:	40	8.1%	\$5,709,778	13.3%	\$142,744	4.8%	\$140,000	12.9%	\$85	-4.5%	39	83	17	46		89.3%
Single Family	4	100.0%	\$608,000	287.3%	\$152,000	93.6%	\$151,500	93.0%	\$89	-11.7%	24	10	17	6	4.0	93.8%
YTD:	40	8.1%	\$5,709,778	13.3%	\$142,744	4.8%	\$140,000	12.9%	\$85	-4.5%	39	82	16	46		89.3%
Townhouse	-	0.0%	-	0.0%	-	0.0%	-	0.0%	-	0.0%	-	-	-	-	-	0.0%
YTD:	-	0.0%	-	0.0%	-	0.0%	-	0.0%	-	0.0%	-	-	-	-	-	0.0%
Condominium	-	0.0%	-	0.0%	-	0.0%	-	0.0%	-	0.0%	-	-	-	-	-	0.0%
YTD:	-	0.0%	-	0.0%	-	0.0%	-	0.0%	-	0.0%	-	1	1	-	-	0.0%
<b>Existing Home</b>																
Residential (SF/COND/TH)	4	100.0%	\$608,000	287.3%	\$152,000	93.6%	\$151,500	93.0%	\$89	-11.7%	24	10	15	6	3.6	93.8%
YTD:	40	8.1%	\$5,709,778	13.3%	\$142,744	4.8%	\$140,000	12.9%	\$85	-4.5%	39	81	15	46		89.3%
Single Family	4	100.0%	\$608,000	287.3%	\$152,000	93.6%	\$151,500	93.0%	\$89	-11.7%	24	10	15	6	3.6	93.8%
YTD:	40	8.1%	\$5,709,778	13.3%	\$142,744	4.8%	\$140,000	12.9%	\$85	-4.5%	39	80	14	46		89.3%
Townhouse	-	0.0%	-	0.0%	-	0.0%	-	0.0%	-	0.0%	-	-	-	-	-	0.0%
YTD:	-	0.0%	-	0.0%	-	0.0%	-	0.0%	-	0.0%	-	-	-	-	-	0.0%
Condominium	-	0.0%	-	0.0%	-	0.0%	-	0.0%	-	0.0%	-	-	-	-	-	0.0%
YTD:	-	0.0%	-	0.0%	-	0.0%	-	0.0%	-	0.0%	-	1	1	-	-	0.0%
<b>New Construction</b>																
Residential (SF/COND/TH)	-	0.0%	-	0.0%	-	0.0%	-	0.0%	-	0.0%	-	-	2	-	24.0	0.0%
YTD:	-	0.0%	-	0.0%	-	0.0%	-	0.0%	-	0.0%	-	2	2	-	-	0.0%
Single Family	-	0.0%	-	0.0%	-	0.0%	-	0.0%	-	0.0%	-	-	2	-	24.0	0.0%
YTD:	-	0.0%	-	0.0%	-	0.0%	-	0.0%	-	0.0%	-	2	2	-	-	0.0%
Townhouse	-	0.0%	-	0.0%	-	0.0%	-	0.0%	-	0.0%	-	-	-	-	-	0.0%
YTD:	-	0.0%	-	0.0%	-	0.0%	-	0.0%	-	0.0%	-	-	-	-	-	0.0%
Condominium	-	0.0%	-	0.0%	-	0.0%	-	0.0%	-	0.0%	-	-	-	-	-	0.0%
YTD:	-	0.0%	-	0.0%	-	0.0%	-	0.0%	-	0.0%	-	-	-	-	-	0.0%

\* Local Market Area Code: 935; Type: Census Place Group  
 \*\* Closed Sale counts for most recent 3 months are Preliminary.

Market Analysis By Local Market Area\*: Smyer

Property Type	Closed Sales**	YoY%	Dollar Volume	YoY%	Average Price	YoY%	Median Price	YoY%	Price/Sqft	YoY%	DOM	New Listings	Active Listings	Pending Sales	Months Inventory	Close To OLP
<b>All(New and Existing)</b>																
Residential (SF/COND/TH)	-	0.0%	-	0.0%	-	0.0%	-	0.0%	-	0.0%	-	-	-	-	-	0.0%
YTD:	-	0.0%	-	0.0%	-	0.0%	-	0.0%	-	0.0%	-	-	-	-	-	0.0%
Single Family	-	0.0%	-	0.0%	-	0.0%	-	0.0%	-	0.0%	-	-	-	-	-	0.0%
YTD:	-	0.0%	-	0.0%	-	0.0%	-	0.0%	-	0.0%	-	-	-	-	-	0.0%
Townhouse	-	0.0%	-	0.0%	-	0.0%	-	0.0%	-	0.0%	-	-	-	-	-	0.0%
YTD:	-	0.0%	-	0.0%	-	0.0%	-	0.0%	-	0.0%	-	-	-	-	-	0.0%
Condominium	-	0.0%	-	0.0%	-	0.0%	-	0.0%	-	0.0%	-	-	-	-	-	0.0%
YTD:	-	0.0%	-	0.0%	-	0.0%	-	0.0%	-	0.0%	-	-	-	-	-	0.0%
<b>Existing Home</b>																
Residential (SF/COND/TH)	-	0.0%	-	0.0%	-	0.0%	-	0.0%	-	0.0%	-	-	-	-	-	0.0%
YTD:	-	0.0%	-	0.0%	-	0.0%	-	0.0%	-	0.0%	-	-	-	-	-	0.0%
Single Family	-	0.0%	-	0.0%	-	0.0%	-	0.0%	-	0.0%	-	-	-	-	-	0.0%
YTD:	-	0.0%	-	0.0%	-	0.0%	-	0.0%	-	0.0%	-	-	-	-	-	0.0%
Townhouse	-	0.0%	-	0.0%	-	0.0%	-	0.0%	-	0.0%	-	-	-	-	-	0.0%
YTD:	-	0.0%	-	0.0%	-	0.0%	-	0.0%	-	0.0%	-	-	-	-	-	0.0%
Condominium	-	0.0%	-	0.0%	-	0.0%	-	0.0%	-	0.0%	-	-	-	-	-	0.0%
YTD:	-	0.0%	-	0.0%	-	0.0%	-	0.0%	-	0.0%	-	-	-	-	-	0.0%
<b>New Construction</b>																
Residential (SF/COND/TH)	-	0.0%	-	0.0%	-	0.0%	-	0.0%	-	0.0%	-	-	-	-	-	0.0%
YTD:	-	0.0%	-	0.0%	-	0.0%	-	0.0%	-	0.0%	-	-	-	-	-	0.0%
Single Family	-	0.0%	-	0.0%	-	0.0%	-	0.0%	-	0.0%	-	-	-	-	-	0.0%
YTD:	-	0.0%	-	0.0%	-	0.0%	-	0.0%	-	0.0%	-	-	-	-	-	0.0%
Townhouse	-	0.0%	-	0.0%	-	0.0%	-	0.0%	-	0.0%	-	-	-	-	-	0.0%
YTD:	-	0.0%	-	0.0%	-	0.0%	-	0.0%	-	0.0%	-	-	-	-	-	0.0%
Condominium	-	0.0%	-	0.0%	-	0.0%	-	0.0%	-	0.0%	-	-	-	-	-	0.0%
YTD:	-	0.0%	-	0.0%	-	0.0%	-	0.0%	-	0.0%	-	-	-	-	-	0.0%

\* Local Market Area Code: 491; Type: Census Place Group  
 \*\* Closed Sale counts for most recent 3 months are Preliminary.

Market Analysis By Local Market Area\*: Sundown

Property Type	Closed Sales**	YoY%	Dollar Volume	YoY%	Average Price	YoY%	Median Price	YoY%	Price/Sqft	YoY%	DOM	New Listings	Active Listings	Pending Sales	Months Inventory	Close To OLP
<b>All(New and Existing)</b>																
Residential (SF/COND/TH)	-	0.0%	-	0.0%	-	0.0%	-	0.0%	-	0.0%	-	1	2	-	8.0	0.0%
YTD:	3	-40.0%	\$706,400	-18.6%	\$235,467	35.6%	\$179,900	9.0%	\$108	35.7%	58	7	2	3		99.0%
Single Family	-	0.0%	-	0.0%	-	0.0%	-	0.0%	-	0.0%	-	1	2	-	8.0	0.0%
YTD:	3	-40.0%	\$706,400	-18.6%	\$235,467	35.6%	\$179,900	9.0%	\$108	35.7%	58	7	2	3		99.0%
Townhouse	-	0.0%	-	0.0%	-	0.0%	-	0.0%	-	0.0%	-	-	-	-	-	0.0%
YTD:	-	0.0%	-	0.0%	-	0.0%	-	0.0%	-	0.0%	-	-	-	-	-	0.0%
Condominium	-	0.0%	-	0.0%	-	0.0%	-	0.0%	-	0.0%	-	-	-	-	-	0.0%
YTD:	-	0.0%	-	0.0%	-	0.0%	-	0.0%	-	0.0%	-	-	-	-	-	0.0%
<b>Existing Home</b>																
Residential (SF/COND/TH)	-	0.0%	-	0.0%	-	0.0%	-	0.0%	-	0.0%	-	1	2	-	8.0	0.0%
YTD:	3	-40.0%	\$706,400	-18.6%	\$235,467	35.6%	\$179,900	9.0%	\$108	35.7%	58	7	2	3		99.0%
Single Family	-	0.0%	-	0.0%	-	0.0%	-	0.0%	-	0.0%	-	1	2	-	8.0	0.0%
YTD:	3	-40.0%	\$706,400	-18.6%	\$235,467	35.6%	\$179,900	9.0%	\$108	35.7%	58	7	2	3		99.0%
Townhouse	-	0.0%	-	0.0%	-	0.0%	-	0.0%	-	0.0%	-	-	-	-	-	0.0%
YTD:	-	0.0%	-	0.0%	-	0.0%	-	0.0%	-	0.0%	-	-	-	-	-	0.0%
Condominium	-	0.0%	-	0.0%	-	0.0%	-	0.0%	-	0.0%	-	-	-	-	-	0.0%
YTD:	-	0.0%	-	0.0%	-	0.0%	-	0.0%	-	0.0%	-	-	-	-	-	0.0%
<b>New Construction</b>																
Residential (SF/COND/TH)	-	0.0%	-	0.0%	-	0.0%	-	0.0%	-	0.0%	-	-	-	-	-	0.0%
YTD:	-	0.0%	-	0.0%	-	0.0%	-	0.0%	-	0.0%	-	-	-	-	-	0.0%
Single Family	-	0.0%	-	0.0%	-	0.0%	-	0.0%	-	0.0%	-	-	-	-	-	0.0%
YTD:	-	0.0%	-	0.0%	-	0.0%	-	0.0%	-	0.0%	-	-	-	-	-	0.0%
Townhouse	-	0.0%	-	0.0%	-	0.0%	-	0.0%	-	0.0%	-	-	-	-	-	0.0%
YTD:	-	0.0%	-	0.0%	-	0.0%	-	0.0%	-	0.0%	-	-	-	-	-	0.0%
Condominium	-	0.0%	-	0.0%	-	0.0%	-	0.0%	-	0.0%	-	-	-	-	-	0.0%
YTD:	-	0.0%	-	0.0%	-	0.0%	-	0.0%	-	0.0%	-	-	-	-	-	0.0%

\* Local Market Area Code: 223; Type: Census Place Group  
 \*\* Closed Sale counts for most recent 3 months are Preliminary.

Market Analysis By Local Market Area\*: Wolfforth

Property Type	Closed Sales**	YoY%	Dollar Volume	YoY%	Average Price	YoY%	Median Price	YoY%	Price/Sqft	YoY%	DOM	New Listings	Active Listings	Pending Sales	Months Inventory	Close To OLP
<b>All(New and Existing)</b>																
Residential (SF/COND/TH)	13	-23.5%	\$3,737,075	-34.0%	\$287,467	-13.6%	\$290,000	-10.8%	\$146	-7.3%	33	50	69	17	4.0	98.2%
YTD:	172	-0.6%	\$54,368,489	-1.2%	\$316,096	-0.6%	\$299,450	-7.1%	\$151	0.0%	52	305	54	178		97.8%
Single Family	13	-23.5%	\$3,737,075	-34.0%	\$287,467	-13.6%	\$290,000	-10.8%	\$146	-7.3%	33	50	68	17	3.9	98.2%
YTD:	171	2.4%	\$54,192,489	0.4%	\$316,915	-1.9%	\$299,900	-7.7%	\$151	-0.2%	52	302	53	177		97.8%
Townhouse	-	0.0%	-	0.0%	-	0.0%	-	0.0%	-	0.0%	-	-	1	-	12.0	0.0%
YTD:	1	-83.3%	\$176,000	-83.5%	\$176,000	-1.2%	\$176,000	-1.1%	\$146	2.5%	10	3	1	1		93.1%
Condominium	-	0.0%	-	0.0%	-	0.0%	-	0.0%	-	0.0%	-	-	-	-	-	0.0%
YTD:	-	0.0%	-	0.0%	-	0.0%	-	0.0%	-	0.0%	-	-	-	-	-	0.0%
<b>Existing Home</b>																
Residential (SF/COND/TH)	10	-9.1%	\$3,024,100	-12.7%	\$302,410	-3.9%	\$308,000	12.0%	\$141	-4.4%	37	19	33	8	3.3	97.9%
YTD:	99	13.8%	\$29,931,249	18.8%	\$302,336	4.4%	\$285,000	0.4%	\$143	7.2%	35	170	23	103		97.5%
Single Family	10	-9.1%	\$3,024,100	-12.7%	\$302,410	-3.9%	\$308,000	12.0%	\$141	-4.4%	37	19	32	8	3.2	97.9%
YTD:	98	12.6%	\$29,755,249	18.1%	\$303,625	4.9%	\$285,000	0.4%	\$143	7.2%	35	167	23	102		97.5%
Townhouse	-	0.0%	-	0.0%	-	0.0%	-	0.0%	-	0.0%	-	-	1	-	12.0	0.0%
YTD:	1	100.0%	\$176,000	100.0%	\$176,000	100.0%	\$176,000	100.0%	\$146	100.0%	10	3	1	1		93.1%
Condominium	-	0.0%	-	0.0%	-	0.0%	-	0.0%	-	0.0%	-	-	-	-	-	0.0%
YTD:	-	0.0%	-	0.0%	-	0.0%	-	0.0%	-	0.0%	-	-	-	-	-	0.0%
<b>New Construction</b>																
Residential (SF/COND/TH)	3	-50.0%	\$712,975	-67.5%	\$237,658	-35.1%	\$187,600	-49.2%	\$164	-7.2%	22	31	36	9	4.9	99.3%
YTD:	73	-15.1%	\$24,437,240	-18.1%	\$334,757	-3.5%	\$320,000	-6.7%	\$162	-4.2%	74	135	30	75		98.2%
Single Family	3	-50.0%	\$712,975	-67.5%	\$237,658	-35.1%	\$187,600	-49.2%	\$164	-7.2%	22	31	36	9	4.9	99.3%
YTD:	73	-8.8%	\$24,437,240	-15.1%	\$334,757	-6.9%	\$320,000	-9.3%	\$162	-5.3%	74	135	30	75		98.2%
Townhouse	-	0.0%	-	0.0%	-	0.0%	-	0.0%	-	0.0%	-	-	-	-	-	0.0%
YTD:	-	-100.0%	-	-100.0%	-	-100.0%	-	-100.0%	-	-100.0%	-	-	-	-	-	0.0%
Condominium	-	0.0%	-	0.0%	-	0.0%	-	0.0%	-	0.0%	-	-	-	-	-	0.0%
YTD:	-	0.0%	-	0.0%	-	0.0%	-	0.0%	-	0.0%	-	-	-	-	-	0.0%

\* Local Market Area Code: 1096; Type: Census Place Group  
 \*\* Closed Sale counts for most recent 3 months are Preliminary.



