

Market Analysis By State: Texas

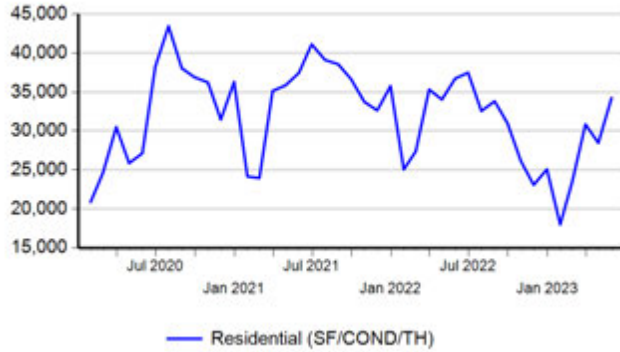
Property Type	Closed Sales*	YoY%	Dollar Volume	YoY%	Average Price	YoY%	Median Price	YoY%	Price/Sqft	YoY%	DOM	New Listings	Active Listings	Pending Sales	Months Inventory	Close To OLP
All(New and Existing)																
Residential (SF/COND/TH)	34,267	-6.7%	\$14,716,640,112	-9.6%	\$429,470	-3.1%	\$346,500	-3.8%	\$194	-3.8%	52	47,120	84,026	33,482	2.9	96.2%
YTD:	135,062	-14.8%	\$54,997,063,985	-15.9%	\$407,199	-1.2%	\$334,900	-0.9%	\$187	-2.0%	60	201,963	79,833	152,010		94.9%
Single Family	32,178	-6.0%	\$13,996,683,001	-8.9%	\$434,977	-3.1%	\$350,000	-4.1%	\$191	-3.5%	53	43,885	78,258	31,424	2.9	96.2%
YTD:	126,729	-14.0%	\$52,138,545,162	-15.2%	\$411,418	-1.4%	\$335,090	-1.4%	\$185	-1.7%	61	188,189	74,623	142,724		94.8%
Townhouse	838	-13.5%	\$295,575,448	-19.4%	\$352,715	-6.8%	\$325,500	-4.3%	\$192	-5.2%	45	1,348	2,089	840	2.8	97.1%
YTD:	3,591	-20.9%	\$1,255,236,712	-22.3%	\$349,551	-1.7%	\$328,000	2.5%	\$192	0.4%	55	5,610	1,925	4,030		96.1%
Condominium	1,222	-20.8%	\$415,311,879	-23.9%	\$339,862	-4.0%	\$258,400	-1.8%	\$264	-4.7%	49	1,887	3,679	1,218	3.6	96.0%
YTD:	4,698	-30.1%	\$1,589,235,393	-31.4%	\$338,279	-1.8%	\$253,000	1.2%	\$260	-2.1%	51	8,164	3,283	5,256		95.6%
Existing Home																
Residential (SF/COND/TH)	26,537	-14.0%	\$11,267,945,723	-17.8%	\$424,613	-4.4%	\$335,000	-5.6%	\$193	-4.4%	41	36,540	57,984	25,502	2.6	96.6%
YTD:	101,585	-22.8%	\$40,399,676,512	-24.9%	\$397,693	-2.8%	\$319,900	-3.1%	\$185	-2.9%	50	153,757	53,533	113,066		95.2%
Single Family	24,729	-13.4%	\$10,666,416,073	-17.2%	\$431,332	-4.4%	\$340,000	-5.6%	\$190	-4.0%	41	33,823	53,498	23,737	2.6	96.6%
YTD:	94,423	-22.1%	\$38,040,812,037	-24.5%	\$402,877	-3.0%	\$321,000	-4.1%	\$182	-2.7%	50	142,302	49,589	105,276		95.1%
Townhouse	628	-25.1%	\$214,455,773	-31.8%	\$341,490	-8.9%	\$310,500	-5.9%	\$182	-8.9%	36	953	1,296	615	2.2	97.3%
YTD:	2,707	-30.3%	\$909,206,218	-33.4%	\$335,872	-4.5%	\$305,000	-2.2%	\$183	-2.6%	49	4,014	1,145	2,938		96.5%
Condominium	1,154	-22.1%	\$379,124,111	-25.4%	\$328,530	-4.3%	\$245,000	-3.9%	\$260	-5.2%	45	1,764	3,190	1,150	3.3	96.3%
YTD:	4,415	-30.9%	\$1,437,400,048	-31.9%	\$325,572	-1.5%	\$240,000	0.0%	\$254	-2.8%	48	7,441	2,797	4,852		95.8%
New Construction																
Residential (SF/COND/TH)	7,729	31.4%	\$3,448,965,133	34.1%	\$446,237	2.0%	\$379,990	0.5%	\$197	-1.7%	92	10,580	26,042	7,980	4.2	94.9%
YTD:	33,463	23.5%	\$14,591,386,397	26.2%	\$436,045	2.2%	\$369,990	0.5%	\$194	0.1%	91	48,206	26,300	38,944		93.9%
Single Family	7,449	30.9%	\$3,330,766,001	34.2%	\$447,143	2.5%	\$379,890	0.8%	\$195	-1.7%	92	10,062	24,760	7,687	4.1	94.9%
YTD:	32,295	23.7%	\$14,092,978,935	26.9%	\$436,383	2.6%	\$369,000	0.7%	\$192	0.3%	92	45,887	25,034	37,448		93.9%
Townhouse	208	58.8%	\$80,426,852	53.2%	\$386,668	-3.5%	\$360,000	-6.9%	\$221	1.8%	72	395	793	225	4.8	96.4%
YTD:	881	33.5%	\$344,973,081	38.2%	\$391,570	3.5%	\$377,371	4.8%	\$217	4.7%	75	1,596	780	1,092		95.0%
Condominium	69	13.1%	\$36,851,203	-1.0%	\$534,075	-12.5%	\$470,000	1.6%	\$348	-4.9%	123	123	489	68	8.9	91.1%
YTD:	283	-15.8%	\$152,046,767	-25.7%	\$537,268	-11.8%	\$480,000	6.5%	\$344	2.6%	103	723	485	404		92.9%

* Closed Sale counts for most recent 3 months are Preliminary.

Trend Analysis By State: Texas

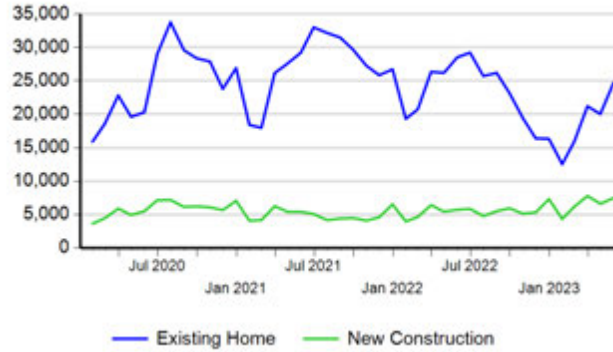
Residential, All (New and Existing)

Monthly Units Sold



Single Family, New vs. Existing

Monthly Units Sold



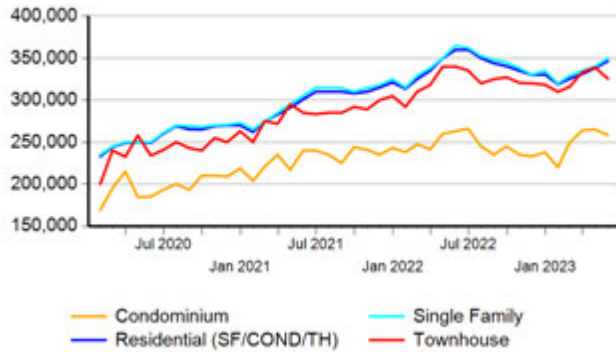
COND/TH, All (New and Existing)

Monthly Units Sold



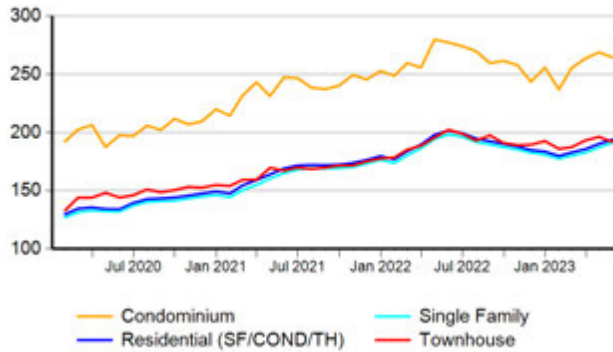
All (New and Existing) Construction

Median Sale Price



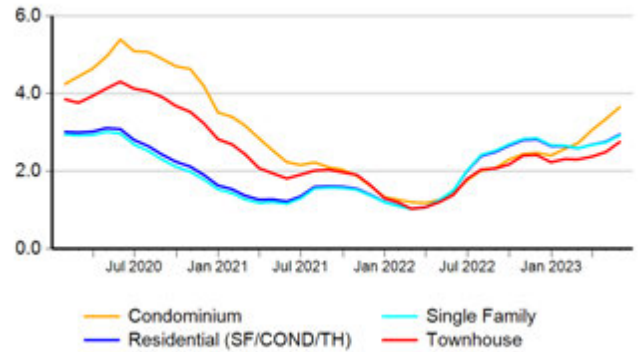
All (New and Existing) Construction

Average Close Price PSF



All (New and Existing) Construction

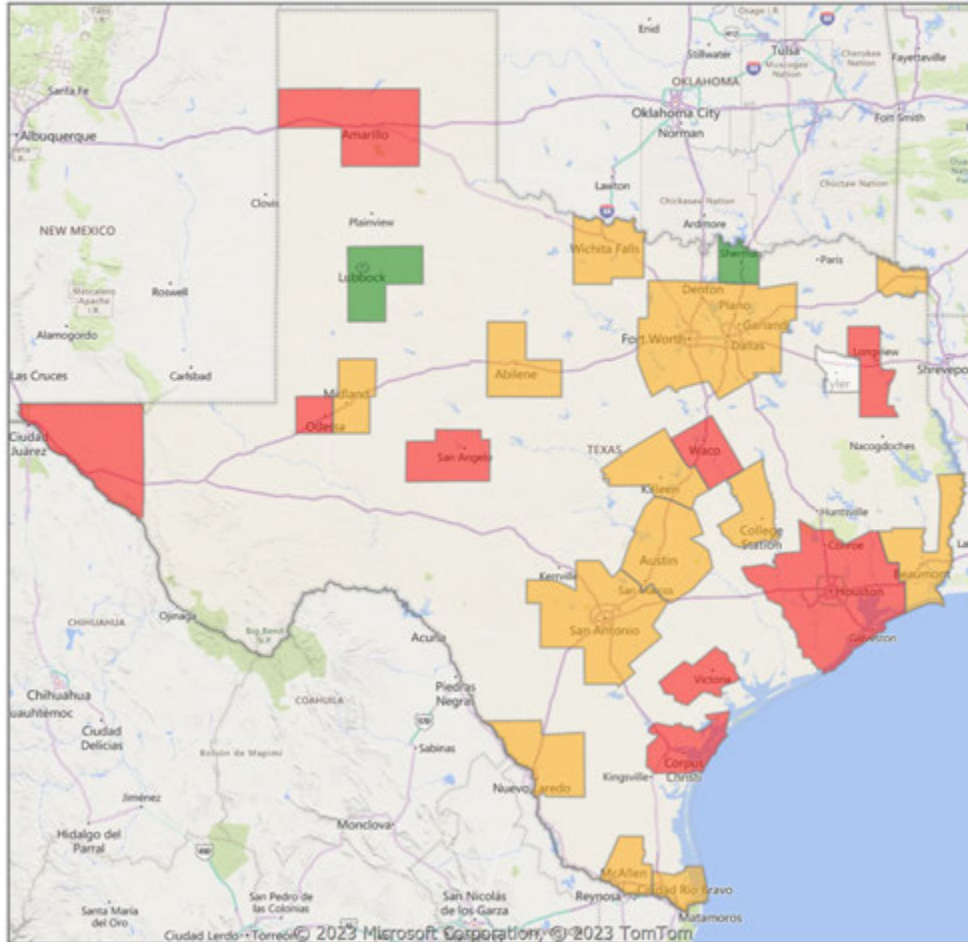
Months Inventory



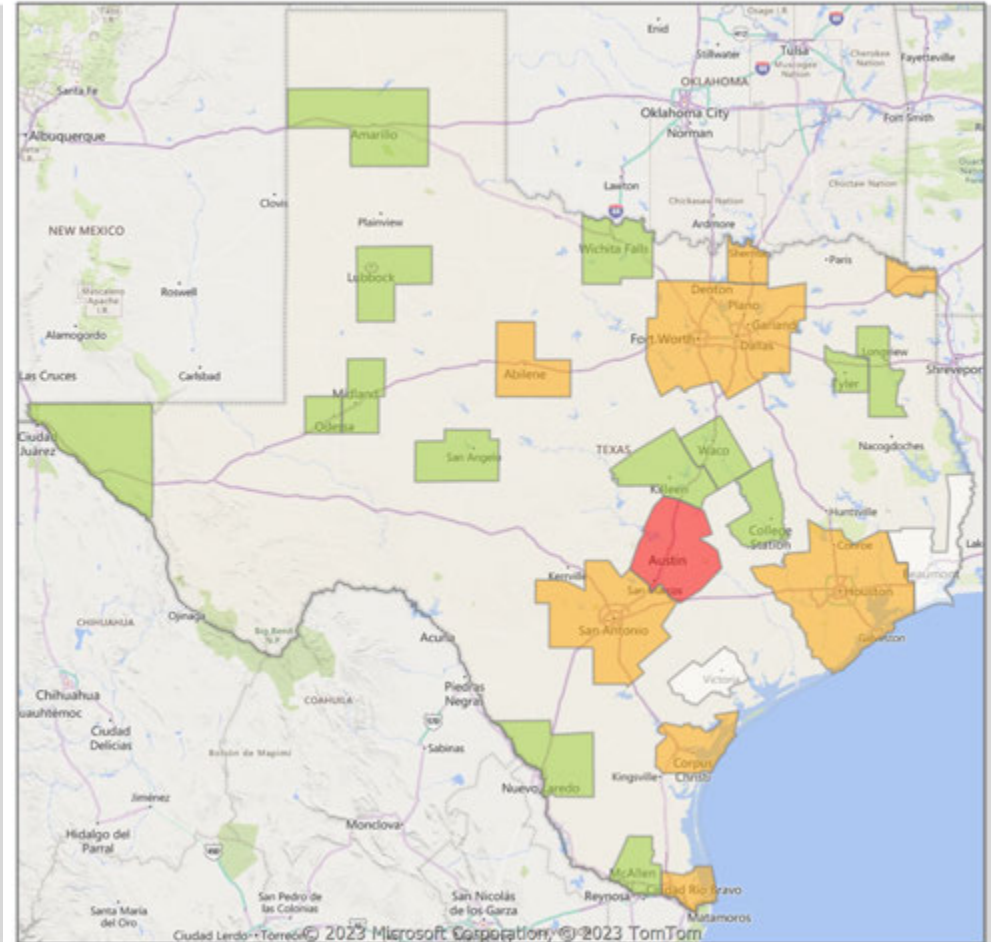
* Closed Sale counts for most recent 3 months are Preliminary.

Comparison By Metropolitan Statistical Area in Texas

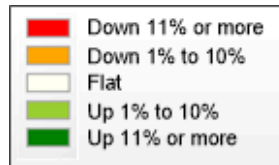
**Residential* Closed Sales
YoY Percentage Change**



**Residential* Avg Close Price Per SqFt
YoY Percentage Change**

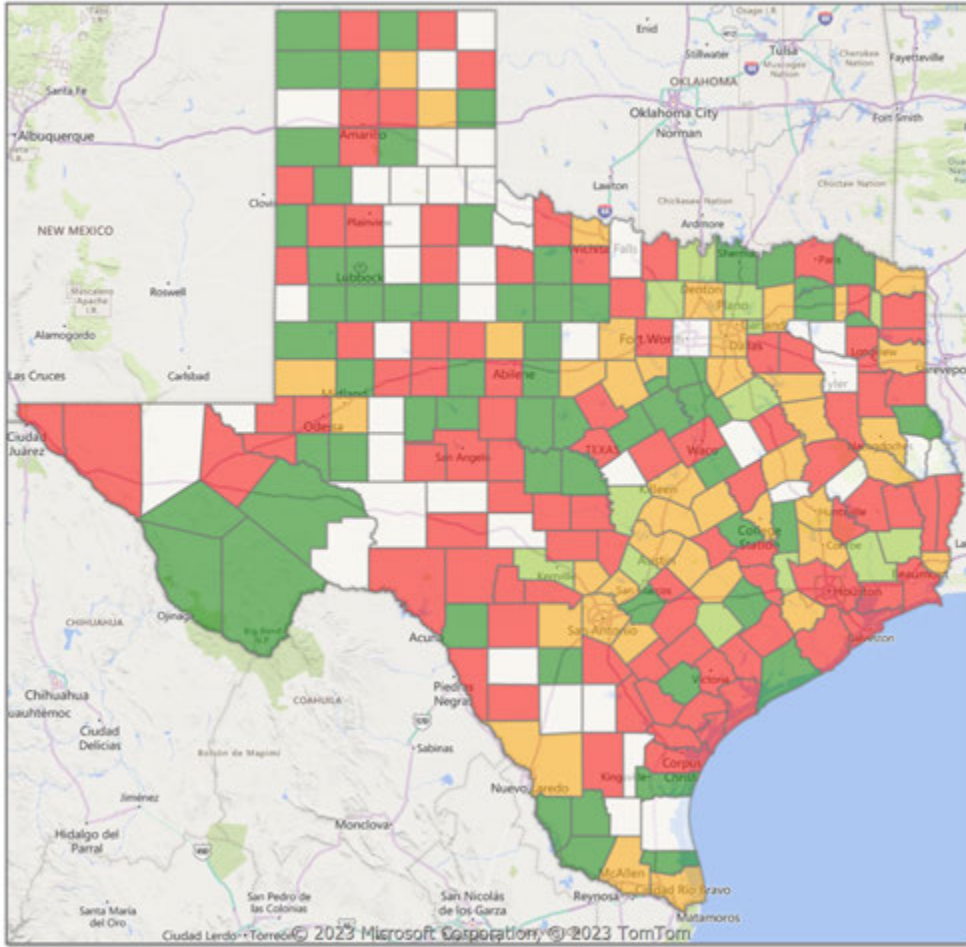


* Residential includes Single Family, Condominium and Townhouse.

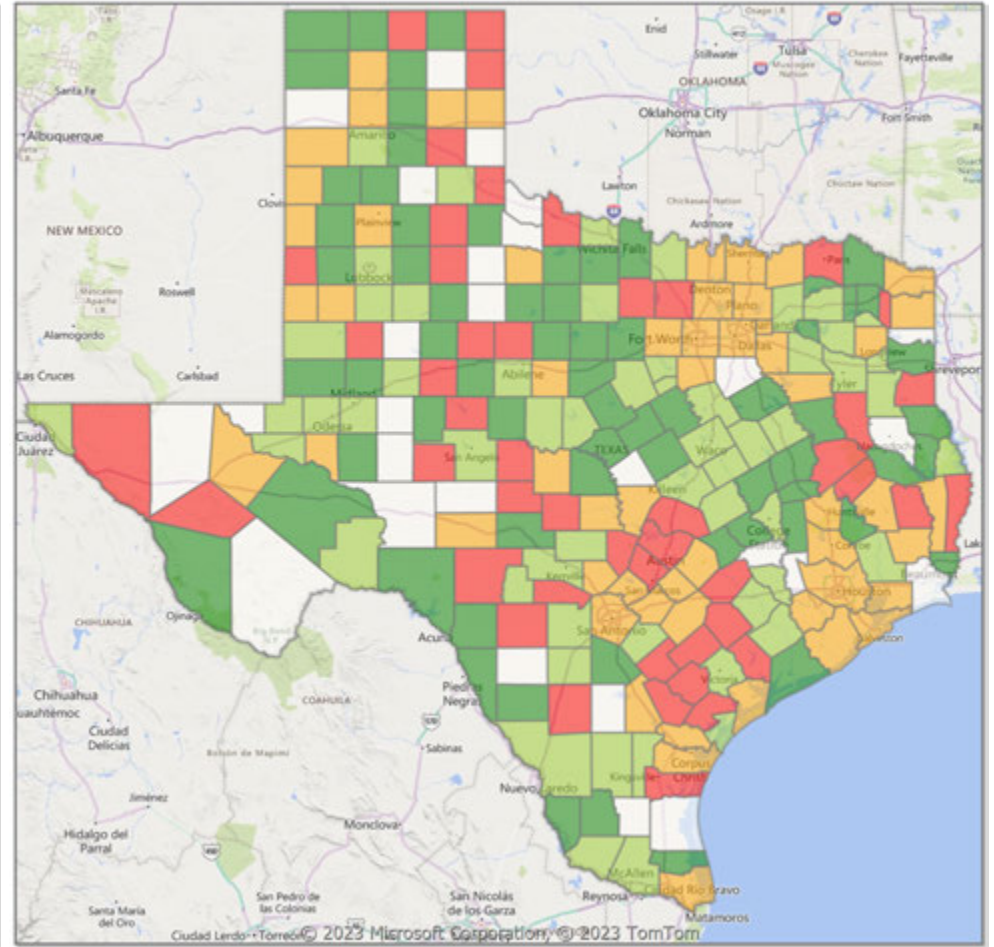


Comparison By County in Texas

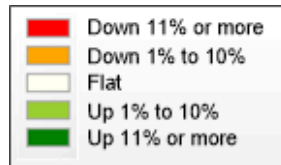
**Residential* Closed Sales
YoY Percentage Change**



**Residential* Avg Close Price Per SqFt
YoY Percentage Change**



* Residential includes Single Family, Condominium and Townhouse.



Market Analysis By Metropolitan Statistical Area: Lubbock

Property Type	Closed Sales*	YoY%	Dollar Volume	YoY%	Average Price	YoY%	Median Price	YoY%	Price/Sqft	YoY%	DOM	New Listings	Active Listings	Pending Sales	Months Inventory	Close To OLP
All(New and Existing)																
Residential (SF/COND/TH)	522	15.2%	\$155,203,001	18.9%	\$297,324	3.2%	\$255,000	2.8%	\$141	1.3%	37	763	1,064	499	2.7	97.3%
YTD:	1,897	-5.6%	\$534,622,993	-4.8%	\$281,826	0.8%	\$243,000	1.3%	\$136	2.8%	40	3,361	972	2,173		96.6%
Single Family	509	15.4%	\$151,145,313	18.0%	\$296,946	2.3%	\$259,900	4.8%	\$141	1.4%	37	738	1,008	476	2.6	97.3%
YTD:	1,854	-5.0%	\$523,554,940	-5.0%	\$282,392	0.0%	\$245,000	0.6%	\$136	2.7%	41	3,208	925	2,118		96.6%
Townhouse	11	83.3%	\$2,292,100	52.5%	\$208,373	-16.8%	\$214,500	-6.7%	\$140	-5.9%	22	22	52	21	8.9	99.1%
YTD:	34	-22.7%	\$7,076,450	-15.3%	\$208,131	9.7%	\$207,500	11.9%	\$134	5.2%	26	139	42	45		98.1%
Condominium	2	-66.7%	\$1,755,000	82.4%	\$877,500	447.1%	\$877,500	590.9%	\$142	4.2%	10	3	4	2	1.7	97.6%
YTD:	9	-30.8%	\$4,012,000	74.3%	\$445,778	151.8%	\$220,000	66.7%	\$136	9.9%	14	14	4	10		93.3%

* Closed Sale counts for most recent 3 months are Preliminary.

Existing Home

Residential (SF/COND/TH)	406	8.3%	\$114,977,103	10.6%	\$283,195	2.2%	\$234,700	1.2%	\$134	0.6%	28	583	670	405	2.1	97.1%
YTD:	1,474	-8.7%	\$389,694,069	-7.6%	\$264,379	1.2%	\$220,000	0.0%	\$128	3.2%	31	2,482	566	1,705		96.4%
Single Family	402	10.7%	\$112,789,370	11.2%	\$280,571	0.4%	\$234,700	-0.1%	\$134	0.9%	28	571	652	397	2.1	97.1%
YTD:	1,443	-8.4%	\$381,120,895	-8.1%	\$264,117	0.4%	\$220,000	0.0%	\$128	3.1%	32	2,428	552	1,673		96.4%
Townhouse	2	-66.7%	\$375,000	-75.1%	\$187,500	-25.2%	\$187,500	-18.5%	\$114	-23.3%	3	9	14	6	3.5	101.7%
YTD:	22	-12.0%	\$4,553,850	-6.2%	\$206,993	6.6%	\$207,500	5.3%	\$127	6.1%	17	40	8	22		97.8%
Condominium	2	-66.7%	\$1,755,000	82.4%	\$877,500	447.1%	\$877,500	590.9%	\$142	4.2%	10	3	4	2	1.7	97.6%
YTD:	9	-30.8%	\$4,012,000	74.3%	\$445,778	151.8%	\$220,000	66.7%	\$136	9.9%	14	14	4	10		93.3%

* Closed Sale counts for most recent 3 months are Preliminary.

New Construction

Residential (SF/COND/TH)	116	48.7%	\$40,210,998	51.3%	\$346,647	1.7%	\$310,000	0.9%	\$166	-1.7%	68	180	394	94	5.1	97.8%
YTD:	423	7.1%	\$144,926,738	3.5%	\$342,616	-3.4%	\$301,500	-6.6%	\$164	-1.3%	72	879	406	468		97.4%
Single Family	107	37.2%	\$38,365,347	44.3%	\$358,555	5.2%	\$329,500	7.3%	\$168	-0.6%	72	167	356	79	4.7	97.8%
YTD:	411	9.3%	\$142,435,678	4.3%	\$346,559	-4.6%	\$305,845	-8.0%	\$165	-1.8%	73	780	372	445		97.4%
Townhouse	9	100.0%	\$1,917,100	100.0%	\$213,011	100.0%	\$214,500	100.0%	\$146	100.0%	27	13	38	15	20.7	98.5%
YTD:	12	-36.8%	\$2,522,600	-27.8%	\$210,217	14.3%	\$209,750	15.1%	\$146	6.7%	44	99	33	23		98.7%
Condominium	-	0.0%	-	0.0%	-	0.0%	-	0.0%	-	0.0%	-	-	0	0	-	0.0%
YTD:	-	0.0%	-	0.0%	-	0.0%	-	0.0%	-	0.0%	-	0	0	0		0.0%

* Closed Sale counts for most recent 3 months are Preliminary.

Trend Analysis By Metropolitan Statistical Area: Lubbock

Residential, All (New and Existing)



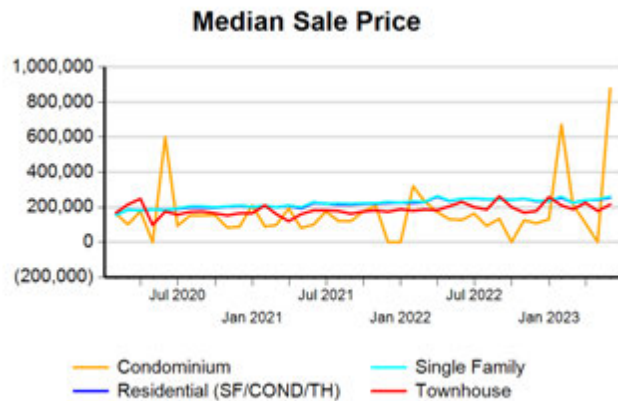
Single Family, New vs. Existing



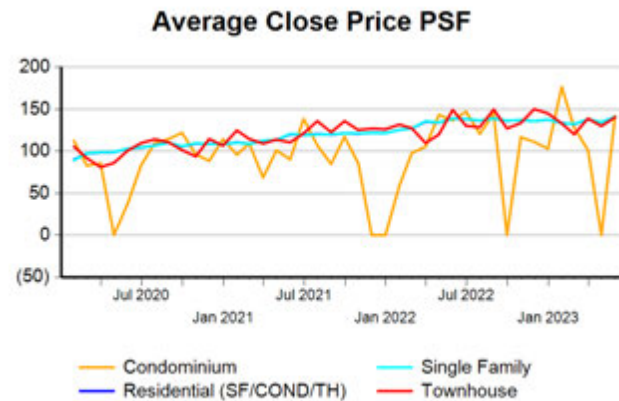
COND/TH, All (New and Existing)



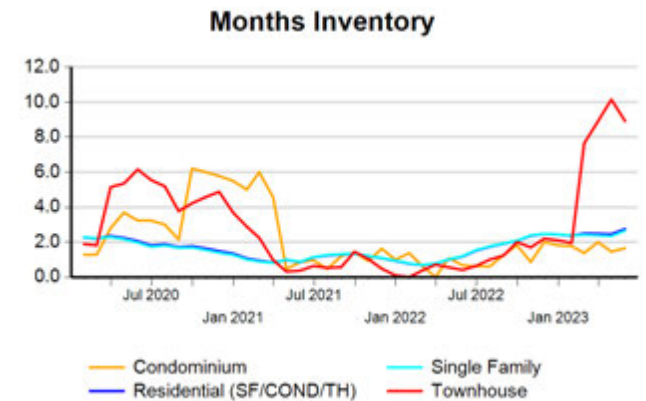
All (New and Existing) Construction



All (New and Existing) Construction



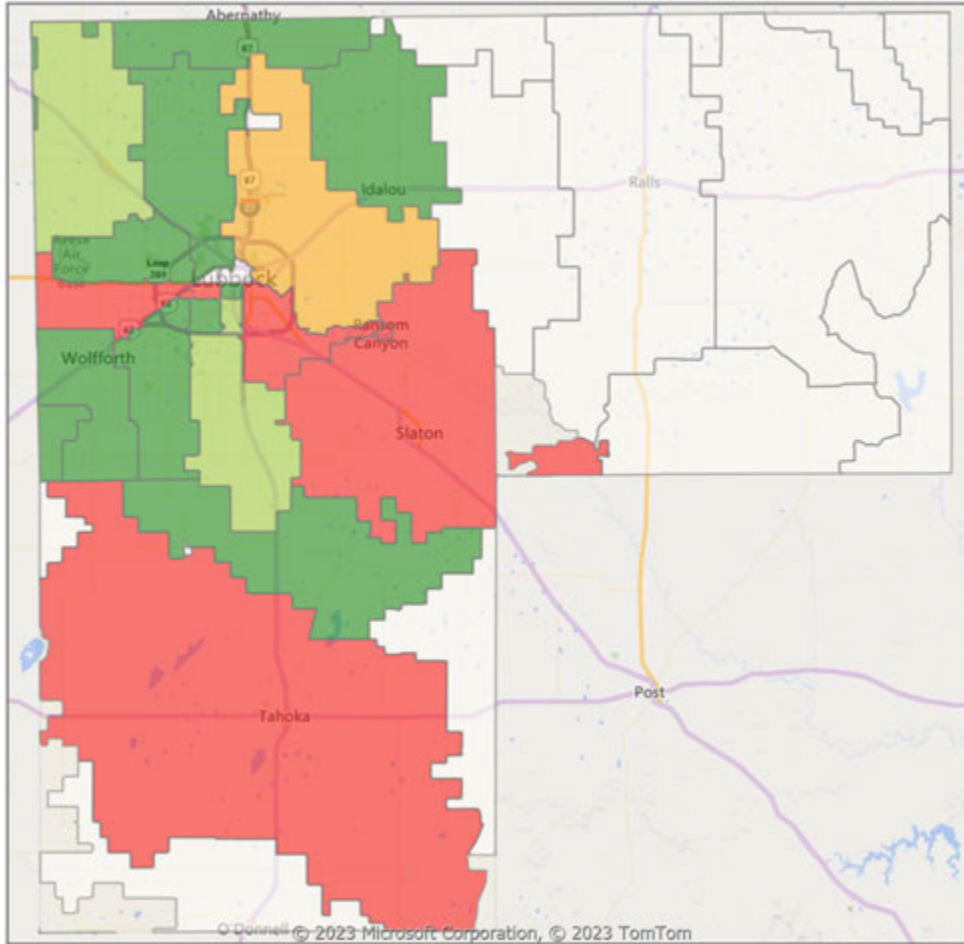
All (New and Existing) Construction



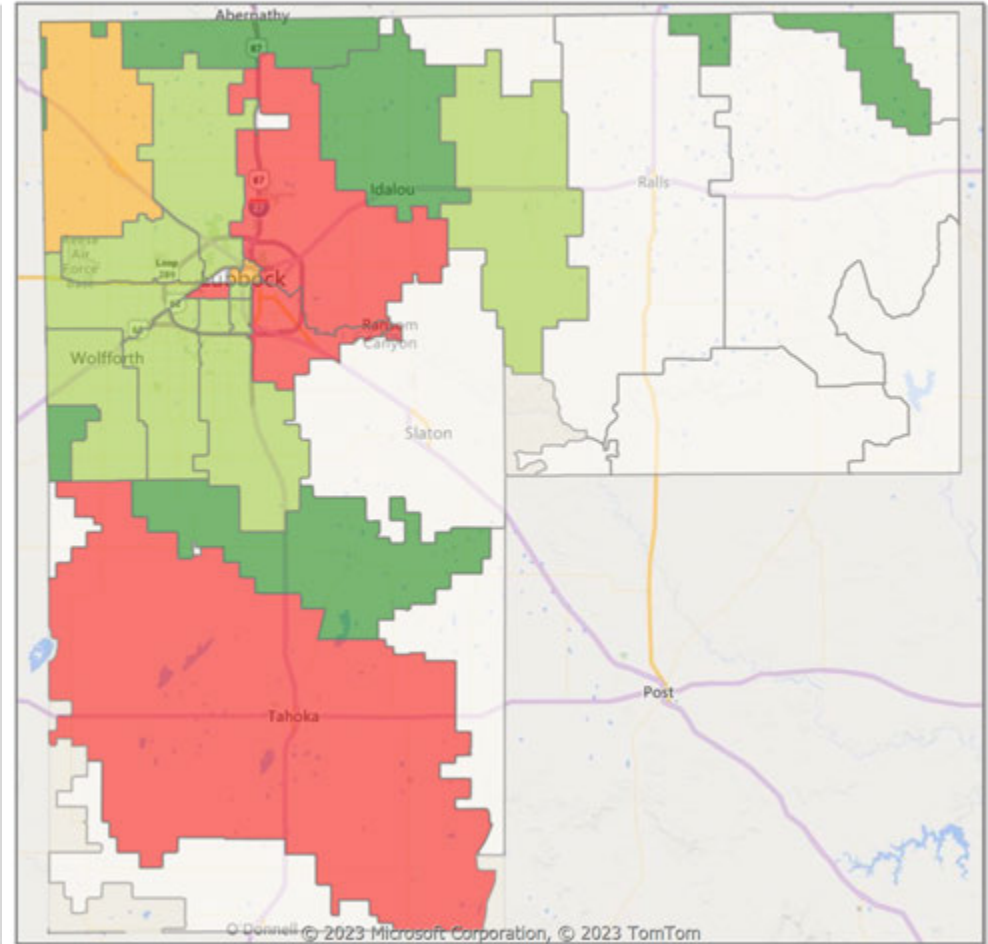
* Closed Sale counts for most recent 3 months are Preliminary.

Comparison By Zip Code* in Lubbock MSA

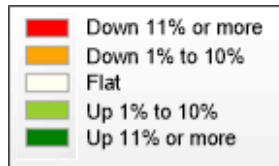
Residential Closed Sales
YoY Percentage Change**



Residential Avg Close Price Per SqFt
YoY Percentage Change**

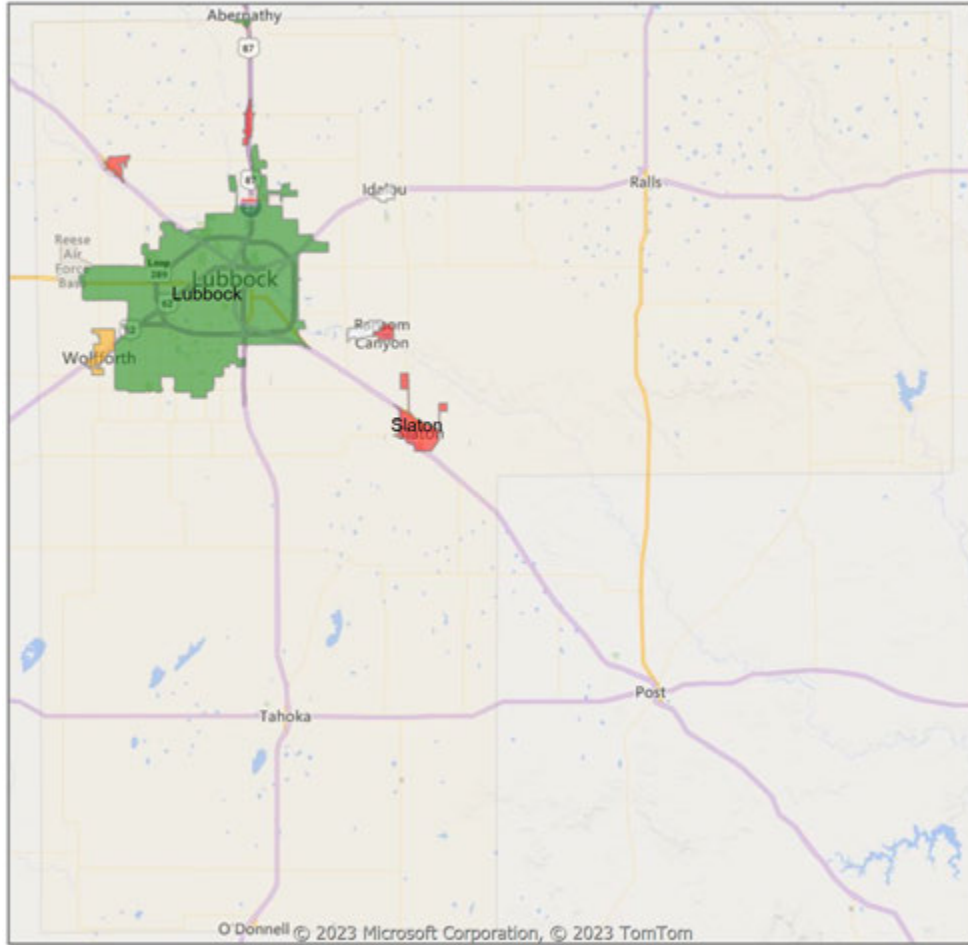


* US Census Zip Code Tabulation Area
** Residential includes Single Family, Condominium and Townhouse.

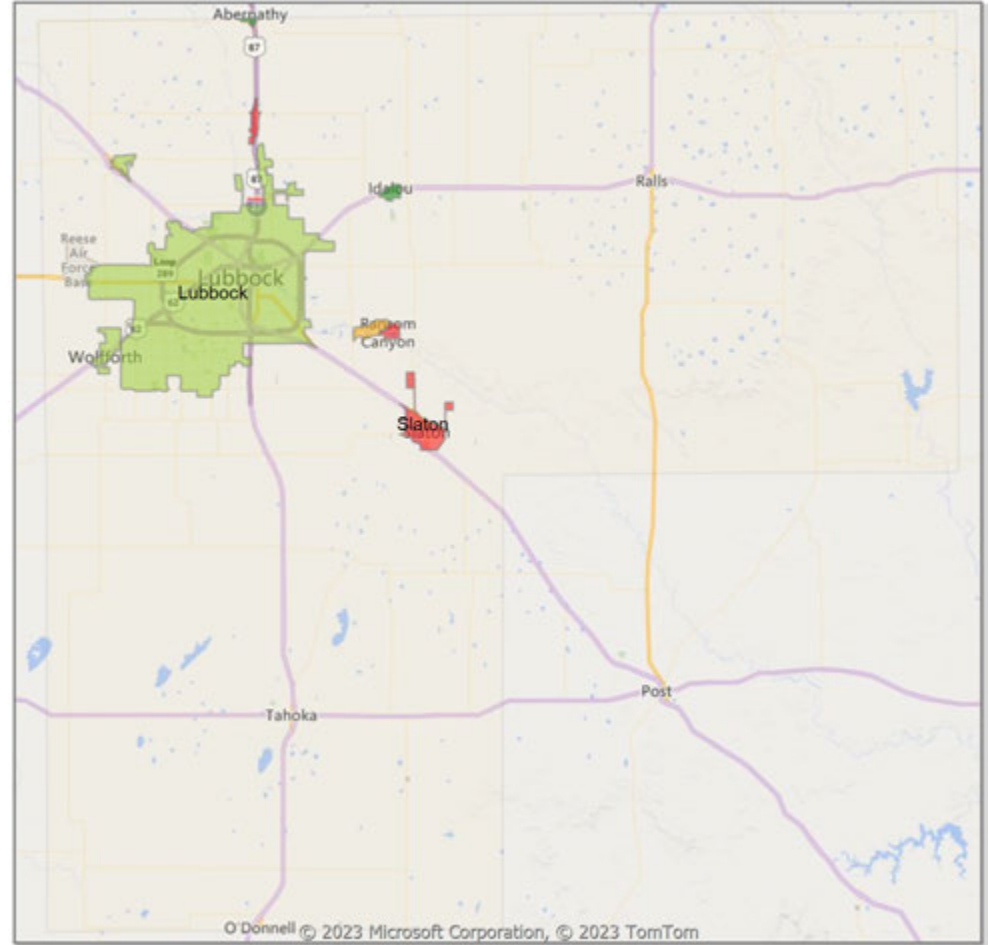


Comparison By Local Market Area* in Lubbock MSA

Residential Closed Sales
YoY Percentage Change**

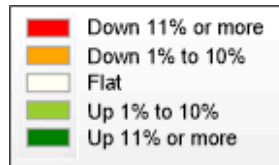


Residential Avg Close Price Per SqFt
YoY Percentage Change**



* Census Place Group

** Residential includes Single Family, Condominium and Townhouse.



Market Analysis By County: Hockley County

Property Type	Closed Sales*	YoY%	Dollar Volume	YoY%	Average Price	YoY%	Median Price	YoY%	Price/Sqft	YoY%	DOM	New Listings	Active Listings	Pending Sales	Months Inventory	Close To OLP
All(New and Existing)																
Residential (SF/COND/TH)	23	76.9%	\$5,033,100	121.4%	\$218,830	25.1%	\$205,000	45.4%	\$104	16.3%	48	42	63	20	4.3	96.9%
YTD:	75	-1.3%	\$16,656,750	21.4%	\$222,090	23.1%	\$205,000	25.0%	\$104	14.7%	65	148	51	89		94.4%
Single Family	23	76.9%	\$5,033,100	121.4%	\$218,830	25.1%	\$205,000	45.4%	\$104	16.3%	48	42	63	20	4.3	96.9%
YTD:	75	-1.3%	\$16,656,750	21.4%	\$222,090	23.1%	\$205,000	25.0%	\$104	14.7%	65	148	51	89		94.4%
Townhouse	-	0.0%	-	0.0%	-	0.0%	-	0.0%	-	0.0%	-	-	-	-	-	0.0%
YTD:	-	0.0%	-	0.0%	-	0.0%	-	0.0%	-	0.0%	-	-	-	-	-	0.0%
Condominium	-	0.0%	-	0.0%	-	0.0%	-	0.0%	-	0.0%	-	-	-	-	-	0.0%
YTD:	-	0.0%	-	0.0%	-	0.0%	-	0.0%	-	0.0%	-	-	-	-	-	0.0%
Existing Home																
Residential (SF/COND/TH)	21	61.5%	\$4,318,100	89.9%	\$205,624	17.6%	\$192,500	36.5%	\$99	11.1%	41	40	60	20	4.2	96.4%
YTD:	72	-4.0%	\$15,792,750	18.6%	\$219,344	23.5%	\$198,750	21.9%	\$102	14.2%	64	139	47	87		94.1%
Single Family	21	61.5%	\$4,318,100	89.9%	\$205,624	17.6%	\$192,500	36.5%	\$99	11.1%	41	40	60	20	4.2	96.4%
YTD:	72	-4.0%	\$15,792,750	18.6%	\$219,344	23.5%	\$198,750	21.9%	\$102	14.2%	64	139	47	87		94.1%
Townhouse	-	0.0%	-	0.0%	-	0.0%	-	0.0%	-	0.0%	-	-	-	-	-	0.0%
YTD:	-	0.0%	-	0.0%	-	0.0%	-	0.0%	-	0.0%	-	-	-	-	-	0.0%
Condominium	-	0.0%	-	0.0%	-	0.0%	-	0.0%	-	0.0%	-	-	-	-	-	0.0%
YTD:	-	0.0%	-	0.0%	-	0.0%	-	0.0%	-	0.0%	-	-	-	-	-	0.0%
New Construction																
Residential (SF/COND/TH)	2	100.0%	\$715,000	100.0%	\$357,500	100.0%	\$357,500	100.0%	\$153	100.0%	117	2	3	-	12.0	101.7%
YTD:	3	200.0%	\$864,000	118.0%	\$288,000	-27.3%	\$250,000	-36.9%	\$135	-9.0%	96	9	4	2		101.1%
Single Family	2	100.0%	\$715,000	100.0%	\$357,500	100.0%	\$357,500	100.0%	\$153	100.0%	117	2	3	-	12.0	101.7%
YTD:	3	200.0%	\$864,000	118.0%	\$288,000	-27.3%	\$250,000	-36.9%	\$135	-9.0%	96	9	4	2		101.1%
Townhouse	-	0.0%	-	0.0%	-	0.0%	-	0.0%	-	0.0%	-	-	-	-	-	0.0%
YTD:	-	0.0%	-	0.0%	-	0.0%	-	0.0%	-	0.0%	-	-	-	-	-	0.0%
Condominium	-	0.0%	-	0.0%	-	0.0%	-	0.0%	-	0.0%	-	-	-	-	-	0.0%
YTD:	-	0.0%	-	0.0%	-	0.0%	-	0.0%	-	0.0%	-	-	-	-	-	0.0%

* Closed Sale counts for most recent 3 months are Preliminary.

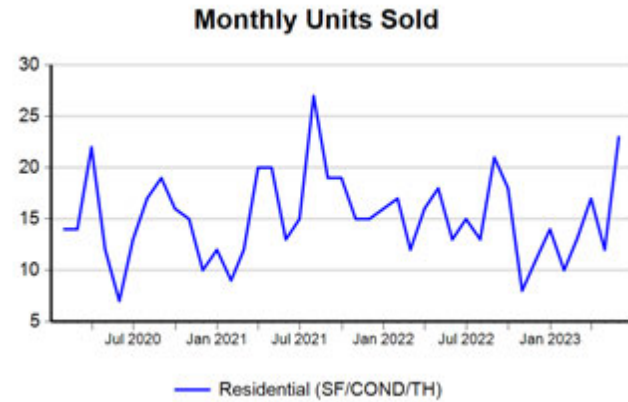
Market Analysis By County: Lubbock County

Property Type	Closed Sales*	YoY%	Dollar Volume	YoY%	Average Price	YoY%	Median Price	YoY%	Price/Sqft	YoY%	DOM	New Listings	Active Listings	Pending Sales	Months Inventory	Close To OLP
All(New and Existing)																
Residential (SF/COND/TH)	512	14.5%	\$152,222,874	17.7%	\$297,310	2.7%	\$255,000	2.8%	\$141	1.1%	37	737	1,026	483	2.7	97.3%
YTD:	1,859	-6.1%	\$527,185,249	-5.4%	\$283,585	0.8%	\$244,950	2.1%	\$137	3.0%	40	3,274	939	2,123		96.7%
Single Family	499	14.7%	\$148,164,951	16.8%	\$296,924	1.8%	\$259,900	4.8%	\$141	1.2%	37	712	970	460	2.6	97.3%
YTD:	1,817	-5.5%	\$516,302,157	-5.5%	\$284,151	0.0%	\$245,000	0.0%	\$137	2.8%	41	3,121	892	2,069		96.7%
Townhouse	11	83.3%	\$2,292,100	52.5%	\$208,373	-16.8%	\$214,500	-6.7%	\$140	-5.9%	22	22	52	21	8.9	99.1%
YTD:	34	-22.7%	\$7,076,450	-15.3%	\$208,131	9.7%	\$207,500	11.9%	\$134	5.2%	26	139	42	45		98.1%
Condominium	2	-66.7%	\$1,755,000	82.4%	\$877,500	447.1%	\$877,500	590.9%	\$142	4.2%	10	3	4	2	1.7	97.6%
YTD:	8	-38.5%	\$3,827,000	66.3%	\$478,375	170.2%	\$250,000	89.4%	\$147	18.5%	14	14	4	9		94.6%
Existing Home																
Residential (SF/COND/TH)	398	7.6%	\$112,881,762	9.4%	\$283,623	1.7%	\$234,950	0.5%	\$134	0.5%	28	562	638	390	2.1	97.2%
YTD:	1,439	-9.3%	\$383,547,366	-8.1%	\$266,537	1.3%	\$223,500	1.6%	\$130	3.5%	31	2,404	537	1,659		96.5%
Single Family	394	10.1%	\$110,692,888	9.9%	\$280,946	-0.2%	\$234,950	0.0%	\$134	0.7%	28	550	620	382	2.1	97.2%
YTD:	1,409	-9.0%	\$375,158,716	-8.6%	\$266,259	0.5%	\$225,000	0.9%	\$130	3.4%	31	2,350	524	1,628		96.5%
Townhouse	2	-66.7%	\$375,000	-75.1%	\$187,500	-25.2%	\$187,500	-18.5%	\$114	-23.3%	3	9	14	6	3.5	101.7%
YTD:	22	-12.0%	\$4,553,850	-6.2%	\$206,993	6.6%	\$207,500	5.3%	\$127	6.1%	17	40	8	22		97.8%
Condominium	2	-66.7%	\$1,755,000	82.4%	\$877,500	447.1%	\$877,500	590.9%	\$142	4.2%	10	3	4	2	1.7	97.6%
YTD:	8	-38.5%	\$3,827,000	66.3%	\$478,375	170.2%	\$250,000	89.4%	\$147	18.5%	14	14	4	9		94.6%
New Construction																
Residential (SF/COND/TH)	114	48.1%	\$39,325,903	50.6%	\$344,964	1.7%	\$308,500	0.9%	\$166	-2.0%	68	175	388	93	5.0	97.9%
YTD:	420	6.6%	\$143,627,621	2.9%	\$341,971	-3.5%	\$300,675	-6.8%	\$164	-1.4%	72	870	401	464		97.4%
Single Family	105	36.4%	\$37,480,778	43.5%	\$356,960	5.2%	\$319,000	4.3%	\$168	-0.9%	71	162	350	78	4.7	97.8%
YTD:	408	8.8%	\$141,136,642	3.7%	\$345,923	-4.7%	\$304,588	-8.0%	\$164	-1.9%	73	771	368	441		97.4%
Townhouse	9	100.0%	\$1,917,100	100.0%	\$213,011	100.0%	\$214,500	100.0%	\$146	100.0%	27	13	38	15	20.7	98.5%
YTD:	12	-36.8%	\$2,522,600	-27.8%	\$210,217	14.3%	\$209,750	15.1%	\$146	6.7%	44	99	33	23		98.7%
Condominium	-	0.0%	-	0.0%	-	0.0%	-	0.0%	-	0.0%	-	-	-	-	-	0.0%
YTD:	-	0.0%	-	0.0%	-	0.0%	-	0.0%	-	0.0%	-	-	-	-	-	0.0%

* Closed Sale counts for most recent 3 months are Preliminary.

Trend Analysis By County: Hockley County

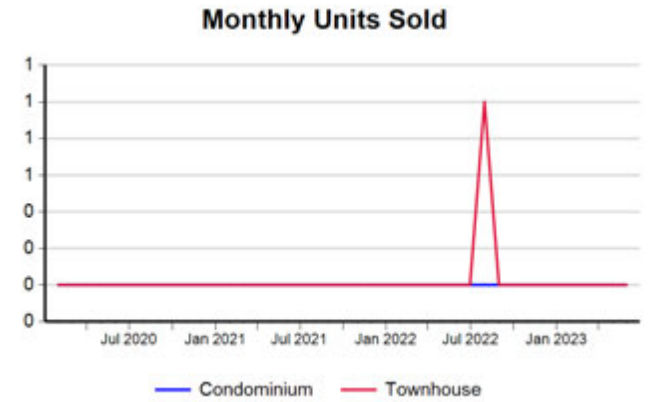
Residential, All (New and Existing)



Single Family, New vs. Existing



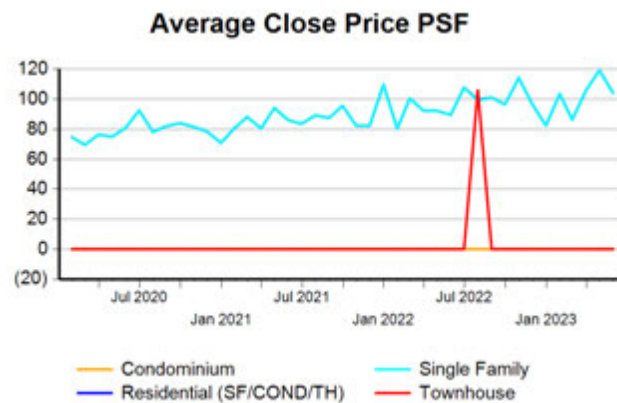
COND/TH, All (New and Existing)



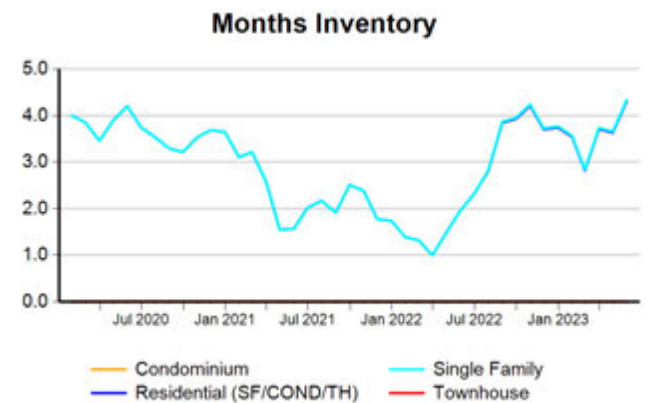
All (New and Existing) Construction



All (New and Existing) Construction



All (New and Existing) Construction



* Closed Sale counts for most recent 3 months are Preliminary.

Trend Analysis By County: Lubbock County

Residential, All (New and Existing)



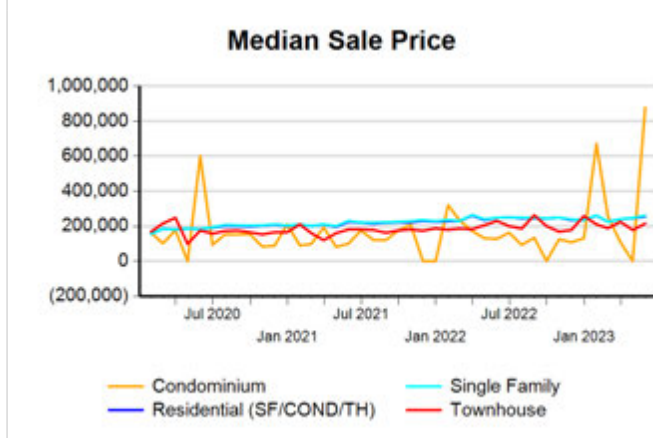
Single Family, New vs. Existing



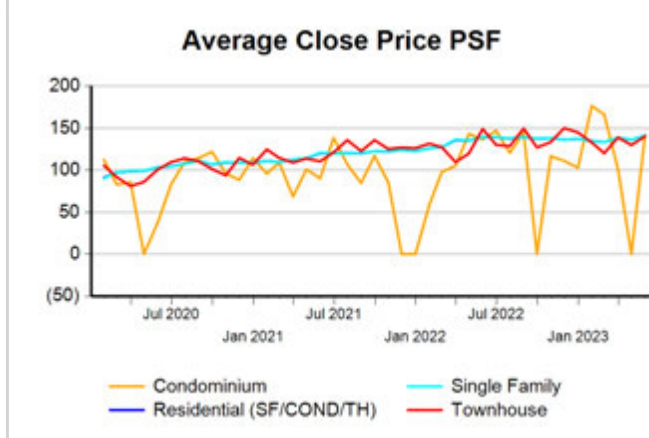
COND/TH, All (New and Existing)



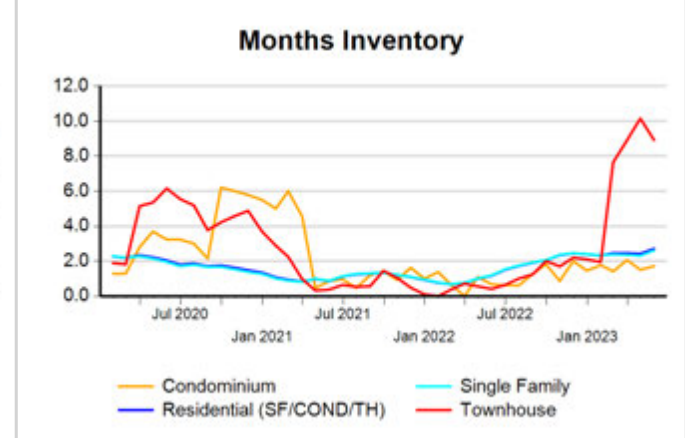
All (New and Existing) Construction



All (New and Existing) Construction



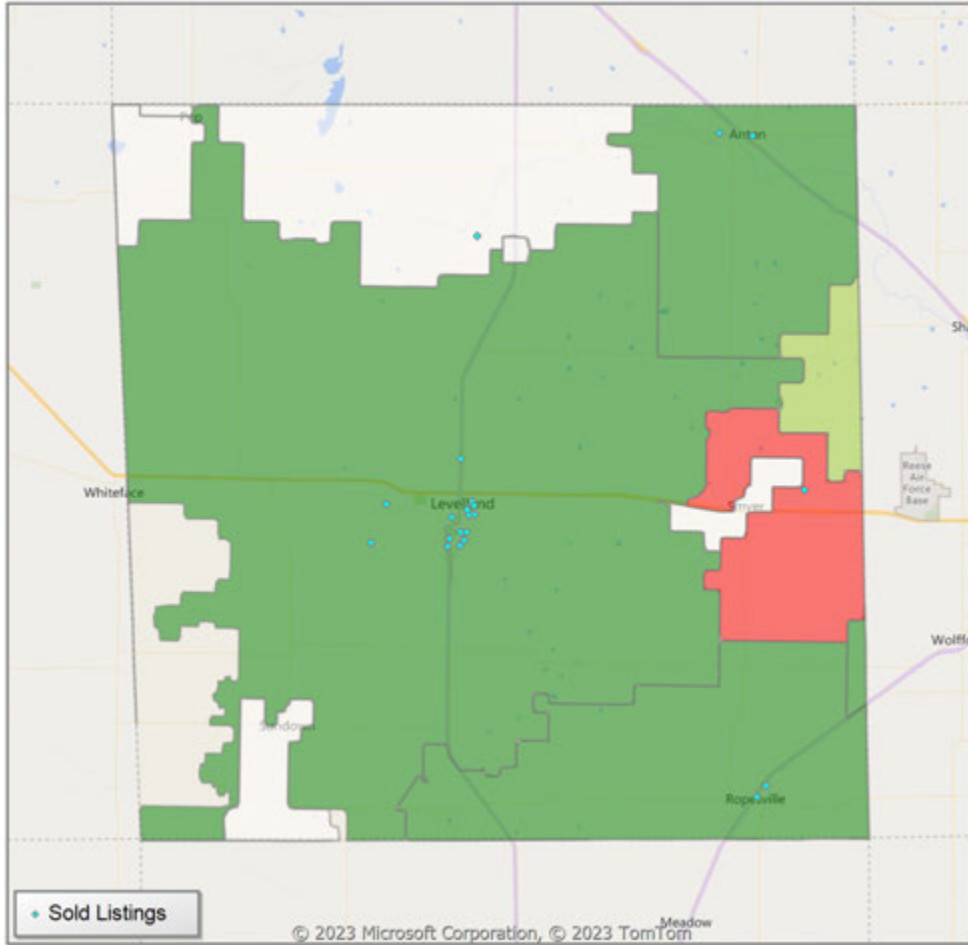
All (New and Existing) Construction



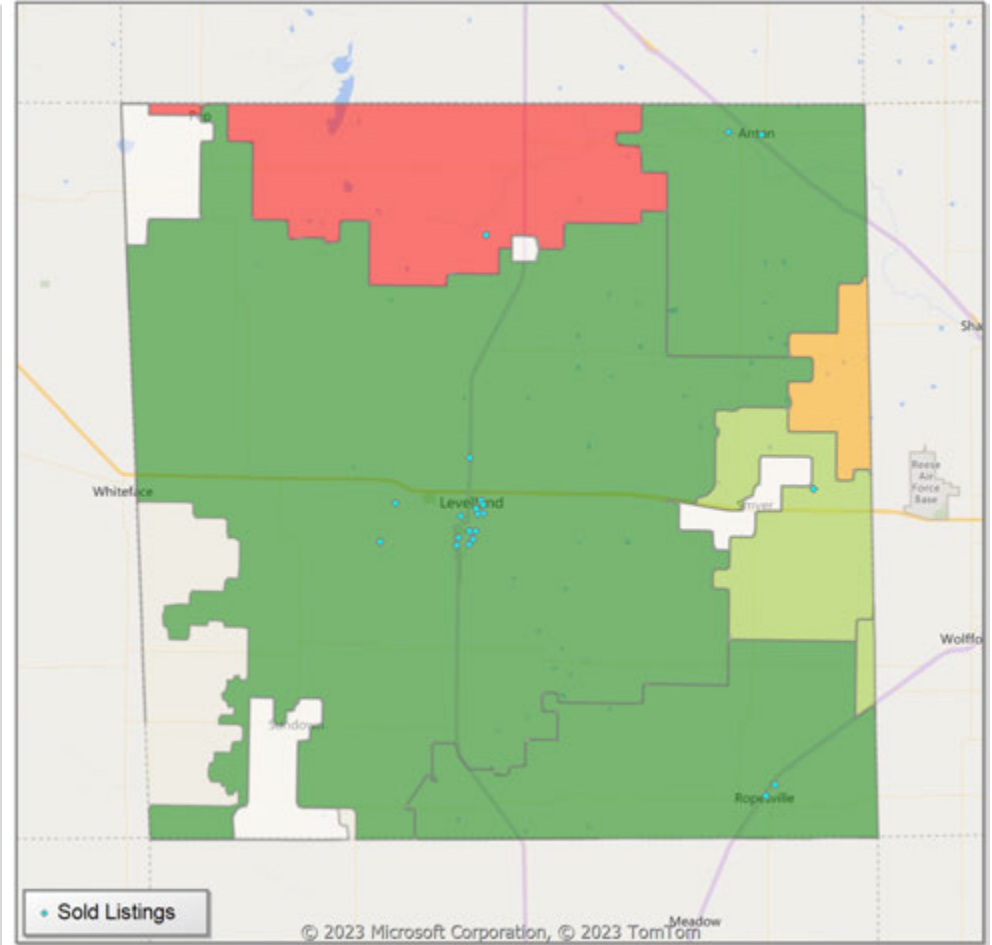
* Closed Sale counts for most recent 3 months are Preliminary.

Comparison By Zip Code* in Hockley County

Residential Closed Sales
YoY Percentage Change**

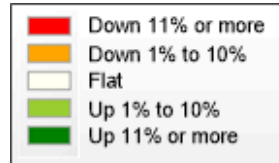


Residential Avg Close Price Per SqFt
YoY Percentage Change**



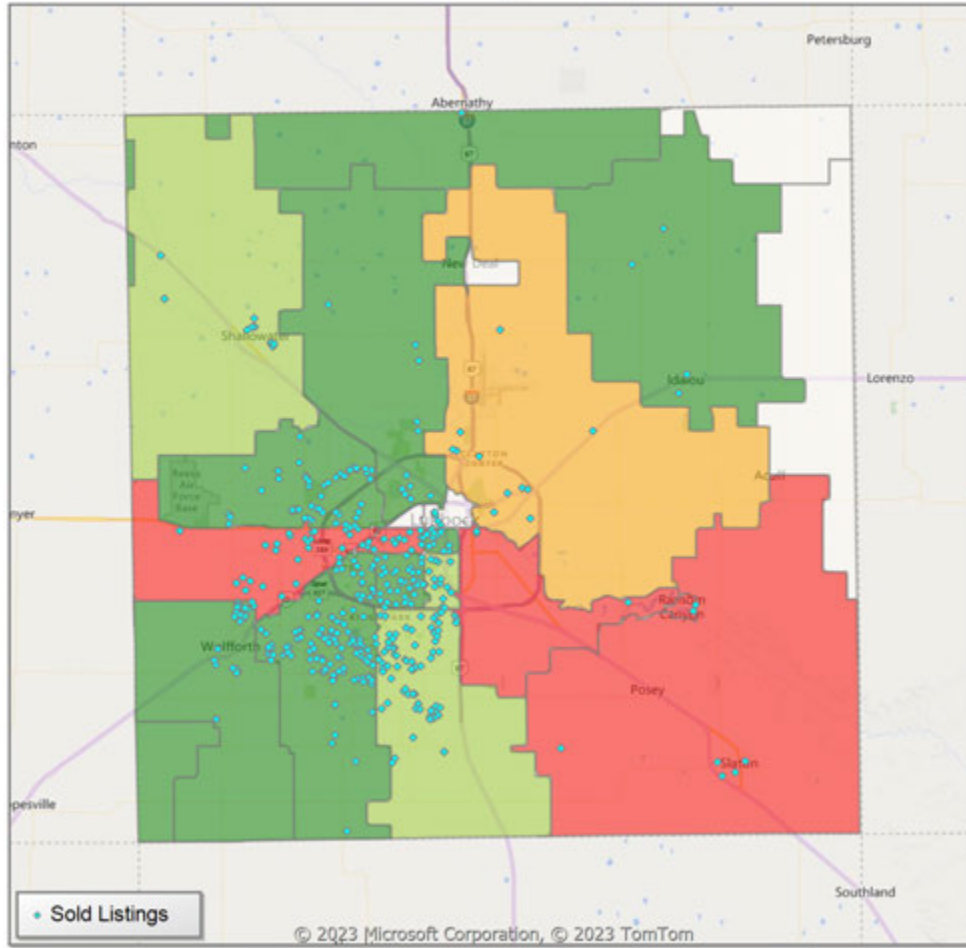
* US Census Zip Code Tabulation Area

** Residential includes Single Family, Condominium and Townhouse.

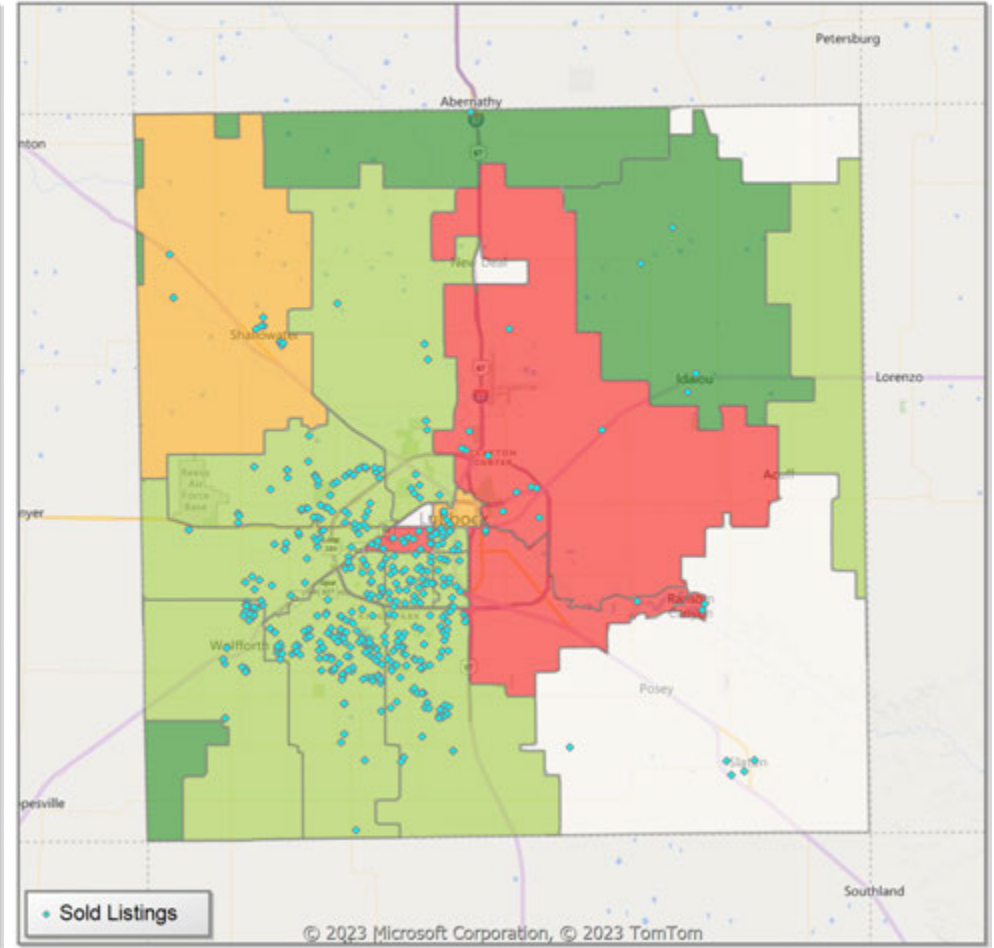


Comparison By Zip Code* in Lubbock County

Residential Closed Sales
YoY Percentage Change**

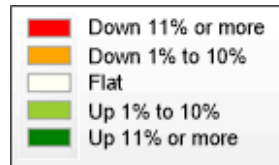


Residential Avg Close Price Per SqFt
YoY Percentage Change**



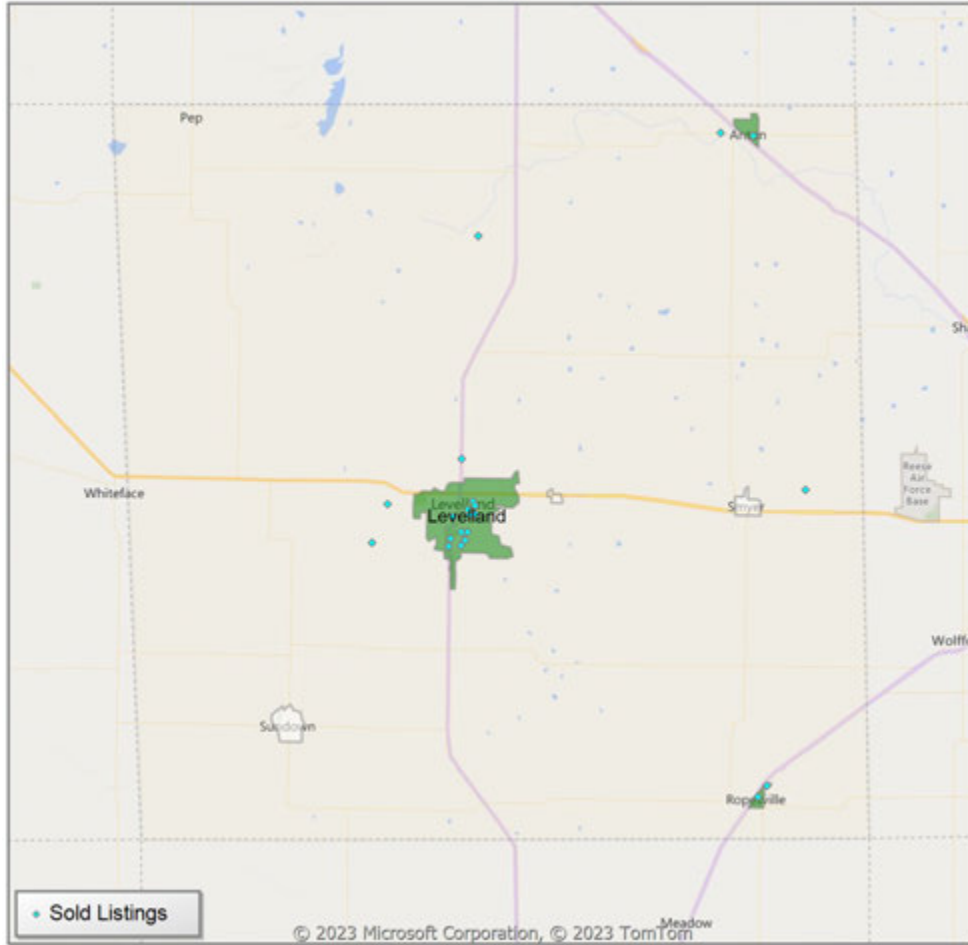
* US Census Zip Code Tabulation Area

** Residential includes Single Family, Condominium and Townhouse.

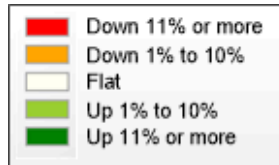
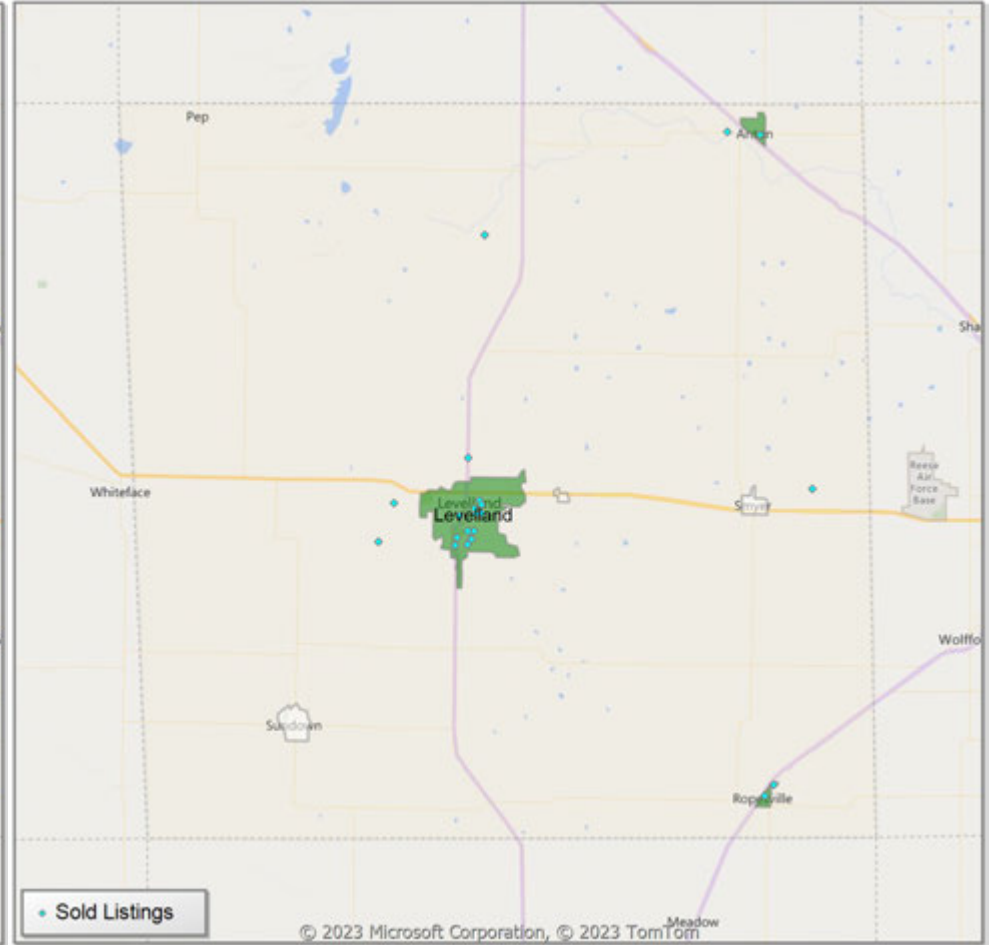


Comparison By Local Market Area* in Hockley County

Residential Closed Sales
YoY Percentage Change**



Residential Avg Close Price Per SqFt
YoY Percentage Change**

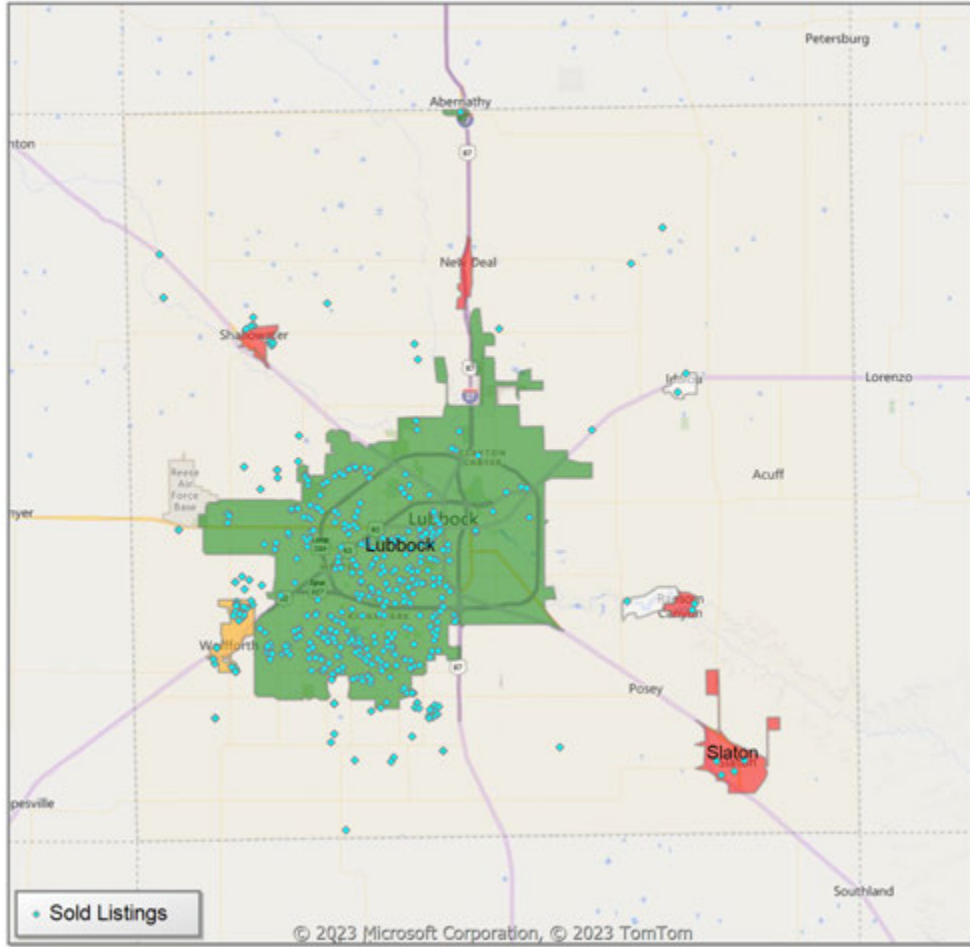


* Census Place Group

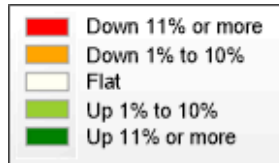
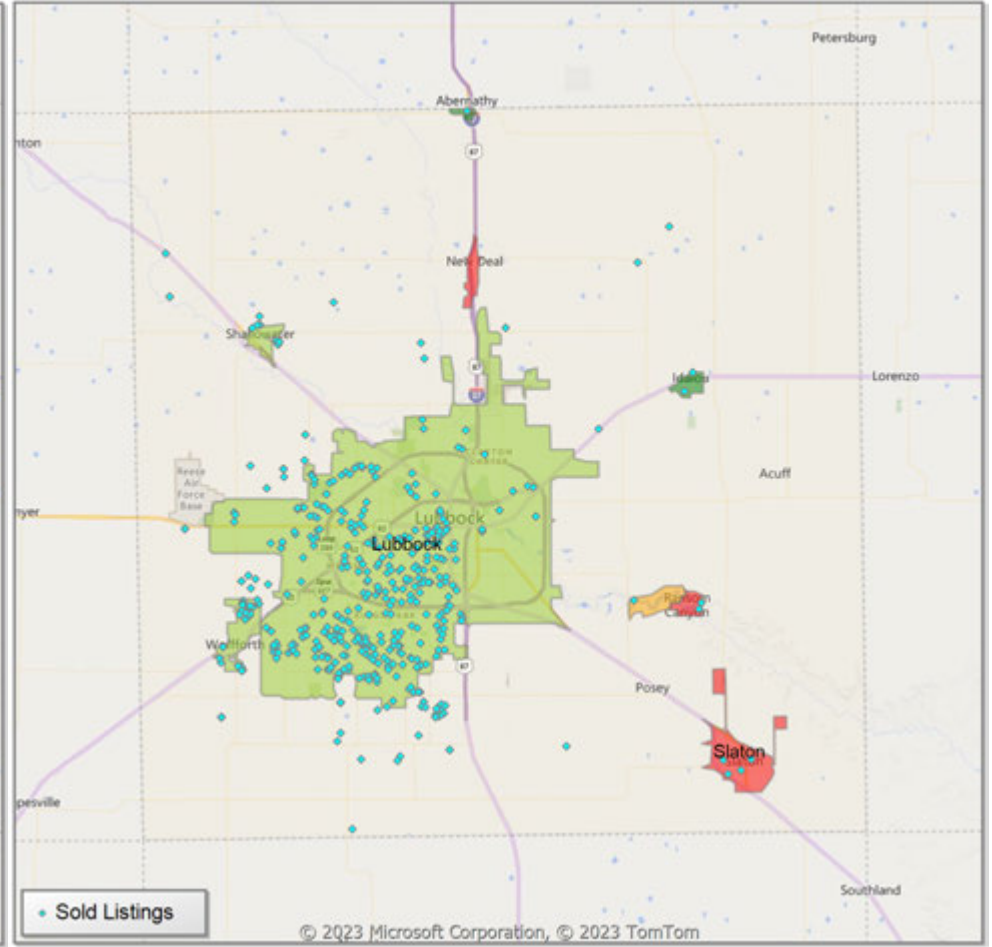
** Residential includes Single Family, Condominium and Townhouse.

Comparison By Local Market Area* in Lubbock County

Residential Closed Sales
YoY Percentage Change**



Residential Avg Close Price Per SqFt
YoY Percentage Change**



* Census Place Group

** Residential includes Single Family, Condominium and Townhouse.

Market Analysis By Local Market Area*: Abernathy

Property Type	Closed Sales**	YoY%	Dollar Volume	YoY%	Average Price	YoY%	Median Price	YoY%	Price/Sqft	YoY%	DOM	New Listings	Active Listings	Pending Sales	Months Inventory	Close To OLP
All(New and Existing)																
Residential (SF/COND/TH)	2	100.0%	\$556,000	100.0%	\$278,000	100.0%	\$278,000	100.0%	\$124	100.0%	16	6	4	2	2.3	98.6%
YTD:	5	-58.3%	\$1,306,000	-12.1%	\$261,200	111.0%	\$251,000	153.5%	\$99	26.7%	71	10	2	6		87.4%
Single Family	2	100.0%	\$556,000	100.0%	\$278,000	100.0%	\$278,000	100.0%	\$124	100.0%	16	6	4	2	2.3	98.6%
YTD:	5	-58.3%	\$1,306,000	-12.1%	\$261,200	111.0%	\$251,000	153.5%	\$99	26.7%	71	10	2	6		87.4%
Townhouse	-	0.0%	-	0.0%	-	0.0%	-	0.0%	-	0.0%	-	-	-	-	-	0.0%
YTD:	-	0.0%	-	0.0%	-	0.0%	-	0.0%	-	0.0%	-	-	-	-	-	0.0%
Condominium	-	0.0%	-	0.0%	-	0.0%	-	0.0%	-	0.0%	-	-	-	-	-	0.0%
YTD:	-	0.0%	-	0.0%	-	0.0%	-	0.0%	-	0.0%	-	-	-	-	-	0.0%
Existing Home																
Residential (SF/COND/TH)	2	100.0%	\$556,000	100.0%	\$278,000	100.0%	\$278,000	100.0%	\$124	100.0%	16	6	4	2	2.4	98.6%
YTD:	5	-58.3%	\$1,306,000	-12.1%	\$261,200	111.0%	\$251,000	153.5%	\$99	26.7%	71	10	2	6		87.4%
Single Family	2	100.0%	\$556,000	100.0%	\$278,000	100.0%	\$278,000	100.0%	\$124	100.0%	16	6	4	2	2.4	98.6%
YTD:	5	-58.3%	\$1,306,000	-12.1%	\$261,200	111.0%	\$251,000	153.5%	\$99	26.7%	71	10	2	6		87.4%
Townhouse	-	0.0%	-	0.0%	-	0.0%	-	0.0%	-	0.0%	-	-	-	-	-	0.0%
YTD:	-	0.0%	-	0.0%	-	0.0%	-	0.0%	-	0.0%	-	-	-	-	-	0.0%
Condominium	-	0.0%	-	0.0%	-	0.0%	-	0.0%	-	0.0%	-	-	-	-	-	0.0%
YTD:	-	0.0%	-	0.0%	-	0.0%	-	0.0%	-	0.0%	-	-	-	-	-	0.0%
New Construction																
Residential (SF/COND/TH)	-	0.0%	-	0.0%	-	0.0%	-	0.0%	-	0.0%	-	-	-	-	-	0.0%
YTD:	-	0.0%	-	0.0%	-	0.0%	-	0.0%	-	0.0%	-	-	-	-	-	0.0%
Single Family	-	0.0%	-	0.0%	-	0.0%	-	0.0%	-	0.0%	-	-	-	-	-	0.0%
YTD:	-	0.0%	-	0.0%	-	0.0%	-	0.0%	-	0.0%	-	-	-	-	-	0.0%
Townhouse	-	0.0%	-	0.0%	-	0.0%	-	0.0%	-	0.0%	-	-	-	-	-	0.0%
YTD:	-	0.0%	-	0.0%	-	0.0%	-	0.0%	-	0.0%	-	-	-	-	-	0.0%
Condominium	-	0.0%	-	0.0%	-	0.0%	-	0.0%	-	0.0%	-	-	-	-	-	0.0%
YTD:	-	0.0%	-	0.0%	-	0.0%	-	0.0%	-	0.0%	-	-	-	-	-	0.0%

* Local Market Area Code: 2; Type: Census Place Group
 ** Closed Sale counts for most recent 3 months are Preliminary.

Market Analysis By Local Market Area*: Anton

Property Type	Closed Sales**	YoY%	Dollar Volume	YoY%	Average Price	YoY%	Median Price	YoY%	Price/Sqft	YoY%	DOM	New Listings	Active Listings	Pending Sales	Months Inventory	Close To OLP
All(New and Existing)																
Residential (SF/COND/TH)	1	100.0%	\$92,500	100.0%	\$92,500	100.0%	\$92,500	100.0%	\$66	100.0%	11	3	4	2	8.0	108.8%
YTD:	2	-33.3%	\$167,500	-67.2%	\$83,750	-50.7%	\$83,750	-60.1%	\$61	-4.1%	44	11	3	4		104.4%
Single Family	1	100.0%	\$92,500	100.0%	\$92,500	100.0%	\$92,500	100.0%	\$66	100.0%	11	3	4	2	8.0	108.8%
YTD:	2	-33.3%	\$167,500	-67.2%	\$83,750	-50.7%	\$83,750	-60.1%	\$61	-4.1%	44	11	3	4		104.4%
Townhouse	-	0.0%	-	0.0%	-	0.0%	-	0.0%	-	0.0%	-	-	-	-	-	0.0%
YTD:	-	0.0%	-	0.0%	-	0.0%	-	0.0%	-	0.0%	-	-	-	-	-	0.0%
Condominium	-	0.0%	-	0.0%	-	0.0%	-	0.0%	-	0.0%	-	-	-	-	-	0.0%
YTD:	-	0.0%	-	0.0%	-	0.0%	-	0.0%	-	0.0%	-	-	-	-	-	0.0%
Existing Home																
Residential (SF/COND/TH)	1	100.0%	\$92,500	100.0%	\$92,500	100.0%	\$92,500	100.0%	\$66	100.0%	11	3	4	2	8.0	108.8%
YTD:	2	-33.3%	\$167,500	-67.2%	\$83,750	-50.7%	\$83,750	-60.1%	\$61	-4.1%	44	11	3	4		104.4%
Single Family	1	100.0%	\$92,500	100.0%	\$92,500	100.0%	\$92,500	100.0%	\$66	100.0%	11	3	4	2	8.0	108.8%
YTD:	2	-33.3%	\$167,500	-67.2%	\$83,750	-50.7%	\$83,750	-60.1%	\$61	-4.1%	44	11	3	4		104.4%
Townhouse	-	0.0%	-	0.0%	-	0.0%	-	0.0%	-	0.0%	-	-	-	-	-	0.0%
YTD:	-	0.0%	-	0.0%	-	0.0%	-	0.0%	-	0.0%	-	-	-	-	-	0.0%
Condominium	-	0.0%	-	0.0%	-	0.0%	-	0.0%	-	0.0%	-	-	-	-	-	0.0%
YTD:	-	0.0%	-	0.0%	-	0.0%	-	0.0%	-	0.0%	-	-	-	-	-	0.0%
New Construction																
Residential (SF/COND/TH)	-	0.0%	-	0.0%	-	0.0%	-	0.0%	-	0.0%	-	-	-	-	-	0.0%
YTD:	-	0.0%	-	0.0%	-	0.0%	-	0.0%	-	0.0%	-	-	-	-	-	0.0%
Single Family	-	0.0%	-	0.0%	-	0.0%	-	0.0%	-	0.0%	-	-	-	-	-	0.0%
YTD:	-	0.0%	-	0.0%	-	0.0%	-	0.0%	-	0.0%	-	-	-	-	-	0.0%
Townhouse	-	0.0%	-	0.0%	-	0.0%	-	0.0%	-	0.0%	-	-	-	-	-	0.0%
YTD:	-	0.0%	-	0.0%	-	0.0%	-	0.0%	-	0.0%	-	-	-	-	-	0.0%
Condominium	-	0.0%	-	0.0%	-	0.0%	-	0.0%	-	0.0%	-	-	-	-	-	0.0%
YTD:	-	0.0%	-	0.0%	-	0.0%	-	0.0%	-	0.0%	-	-	-	-	-	0.0%

* Local Market Area Code: 1014; Type: Census Place Group
 ** Closed Sale counts for most recent 3 months are Preliminary.

Market Analysis By Local Market Area*: Buffalo Springs

Property Type	Closed Sales**	YoY%	Dollar Volume	YoY%	Average Price	YoY%	Median Price	YoY%	Price/Sqft	YoY%	DOM	New Listings	Active Listings	Pending Sales	Months Inventory	Close To OLP
All(New and Existing)																
Residential (SF/COND/TH)	1	0.0%	\$110,000	-56.0%	\$110,000	-56.0%	\$110,000	-56.0%	\$124	-8.4%	-	-	3	2	1.8	104.8%
YTD:	4	-42.9%	\$994,000	-56.9%	\$248,500	-24.5%	\$226,000	-9.6%	\$155	-6.9%	28	9	4	6		99.8%
Single Family	1	0.0%	\$110,000	-56.0%	\$110,000	-56.0%	\$110,000	-56.0%	\$124	-8.4%	-	-	3	2	1.8	104.8%
YTD:	4	-42.9%	\$994,000	-56.9%	\$248,500	-24.5%	\$226,000	-9.6%	\$155	-6.9%	28	9	4	6		99.8%
Townhouse	-	0.0%	-	0.0%	-	0.0%	-	0.0%	-	0.0%	-	-	-	-	-	0.0%
YTD:	-	0.0%	-	0.0%	-	0.0%	-	0.0%	-	0.0%	-	-	-	-	-	0.0%
Condominium	-	0.0%	-	0.0%	-	0.0%	-	0.0%	-	0.0%	-	-	-	-	-	0.0%
YTD:	-	0.0%	-	0.0%	-	0.0%	-	0.0%	-	0.0%	-	-	-	-	-	0.0%
Existing Home																
Residential (SF/COND/TH)	1	0.0%	\$110,000	-56.0%	\$110,000	-56.0%	\$110,000	-56.0%	\$124	-8.4%	-	-	3	2	1.8	104.8%
YTD:	4	-42.9%	\$994,000	-56.9%	\$248,500	-24.5%	\$226,000	-9.6%	\$155	-6.9%	28	9	4	6		99.8%
Single Family	1	0.0%	\$110,000	-56.0%	\$110,000	-56.0%	\$110,000	-56.0%	\$124	-8.4%	-	-	3	2	1.8	104.8%
YTD:	4	-42.9%	\$994,000	-56.9%	\$248,500	-24.5%	\$226,000	-9.6%	\$155	-6.9%	28	9	4	6		99.8%
Townhouse	-	0.0%	-	0.0%	-	0.0%	-	0.0%	-	0.0%	-	-	-	-	-	0.0%
YTD:	-	0.0%	-	0.0%	-	0.0%	-	0.0%	-	0.0%	-	-	-	-	-	0.0%
Condominium	-	0.0%	-	0.0%	-	0.0%	-	0.0%	-	0.0%	-	-	-	-	-	0.0%
YTD:	-	0.0%	-	0.0%	-	0.0%	-	0.0%	-	0.0%	-	-	-	-	-	0.0%
New Construction																
Residential (SF/COND/TH)	-	0.0%	-	0.0%	-	0.0%	-	0.0%	-	0.0%	-	-	-	-	-	0.0%
YTD:	-	0.0%	-	0.0%	-	0.0%	-	0.0%	-	0.0%	-	-	-	-	-	0.0%
Single Family	-	0.0%	-	0.0%	-	0.0%	-	0.0%	-	0.0%	-	-	-	-	-	0.0%
YTD:	-	0.0%	-	0.0%	-	0.0%	-	0.0%	-	0.0%	-	-	-	-	-	0.0%
Townhouse	-	0.0%	-	0.0%	-	0.0%	-	0.0%	-	0.0%	-	-	-	-	-	0.0%
YTD:	-	0.0%	-	0.0%	-	0.0%	-	0.0%	-	0.0%	-	-	-	-	-	0.0%
Condominium	-	0.0%	-	0.0%	-	0.0%	-	0.0%	-	0.0%	-	-	-	-	-	0.0%
YTD:	-	0.0%	-	0.0%	-	0.0%	-	0.0%	-	0.0%	-	-	-	-	-	0.0%

* Local Market Area Code: 135; Type: Census Place Group
 ** Closed Sale counts for most recent 3 months are Preliminary.

Market Analysis By Local Market Area*: Idalou

Property Type	Closed Sales**	YoY%	Dollar Volume	YoY%	Average Price	YoY%	Median Price	YoY%	Price/Sqft	YoY%	DOM	New Listings	Active Listings	Pending Sales	Months Inventory	Close To OLP
All(New and Existing)																
Residential (SF/COND/TH)	2	0.0%	\$725,000	182.1%	\$362,500	182.1%	\$362,500	182.1%	\$157	44.9%	10	2	1	2	0.6	97.4%
YTD:	6	-25.0%	\$1,693,750	26.5%	\$282,292	68.6%	\$277,500	83.8%	\$139	36.9%	99	5	1	7		92.2%
Single Family	2	0.0%	\$725,000	182.1%	\$362,500	182.1%	\$362,500	182.1%	\$157	44.9%	10	2	1	2	0.6	97.4%
YTD:	6	-25.0%	\$1,693,750	26.5%	\$282,292	68.6%	\$277,500	83.8%	\$139	36.9%	99	5	1	7		92.2%
Townhouse	-	0.0%	-	0.0%	-	0.0%	-	0.0%	-	0.0%	-	-	-	-	-	0.0%
YTD:	-	0.0%	-	0.0%	-	0.0%	-	0.0%	-	0.0%	-	-	-	-	-	0.0%
Condominium	-	0.0%	-	0.0%	-	0.0%	-	0.0%	-	0.0%	-	-	-	-	-	0.0%
YTD:	-	0.0%	-	0.0%	-	0.0%	-	0.0%	-	0.0%	-	-	-	-	-	0.0%
Existing Home																
Residential (SF/COND/TH)	2	0.0%	\$725,000	182.1%	\$362,500	182.1%	\$362,500	182.1%	\$157	44.9%	10	2	1	2	0.6	97.4%
YTD:	5	-37.5%	\$1,453,750	8.5%	\$290,750	73.7%	\$290,000	92.1%	\$129	27.3%	96	5	1	6		91.0%
Single Family	2	0.0%	\$725,000	182.1%	\$362,500	182.1%	\$362,500	182.1%	\$157	44.9%	10	2	1	2	0.6	97.4%
YTD:	5	-37.5%	\$1,453,750	8.5%	\$290,750	73.7%	\$290,000	92.1%	\$129	27.3%	96	5	1	6		91.0%
Townhouse	-	0.0%	-	0.0%	-	0.0%	-	0.0%	-	0.0%	-	-	-	-	-	0.0%
YTD:	-	0.0%	-	0.0%	-	0.0%	-	0.0%	-	0.0%	-	-	-	-	-	0.0%
Condominium	-	0.0%	-	0.0%	-	0.0%	-	0.0%	-	0.0%	-	-	-	-	-	0.0%
YTD:	-	0.0%	-	0.0%	-	0.0%	-	0.0%	-	0.0%	-	-	-	-	-	0.0%
New Construction																
Residential (SF/COND/TH)	-	0.0%	-	0.0%	-	0.0%	-	0.0%	-	0.0%	-	-	-	-	-	0.0%
YTD:	1	100.0%	\$240,000	100.0%	\$240,000	100.0%	\$240,000	100.0%	\$188	100.0%	117	-	-	1		98.0%
Single Family	-	0.0%	-	0.0%	-	0.0%	-	0.0%	-	0.0%	-	-	-	-	-	0.0%
YTD:	1	100.0%	\$240,000	100.0%	\$240,000	100.0%	\$240,000	100.0%	\$188	100.0%	117	-	-	1		98.0%
Townhouse	-	0.0%	-	0.0%	-	0.0%	-	0.0%	-	0.0%	-	-	-	-	-	0.0%
YTD:	-	0.0%	-	0.0%	-	0.0%	-	0.0%	-	0.0%	-	-	-	-	-	0.0%
Condominium	-	0.0%	-	0.0%	-	0.0%	-	0.0%	-	0.0%	-	-	-	-	-	0.0%
YTD:	-	0.0%	-	0.0%	-	0.0%	-	0.0%	-	0.0%	-	-	-	-	-	0.0%

* Local Market Area Code: 456; Type: Census Place Group
 ** Closed Sale counts for most recent 3 months are Preliminary.

Market Analysis By Local Market Area*: Levelland

Property Type	Closed Sales**	YoY%	Dollar Volume	YoY%	Average Price	YoY%	Median Price	YoY%	Price/Sqft	YoY%	DOM	New Listings	Active Listings	Pending Sales	Months Inventory	Close To OLP
All(New and Existing)																
Residential (SF/COND/TH)	14	40.0%	\$2,999,600	70.2%	\$214,257	21.6%	\$197,500	42.1%	\$100	15.7%	35	25	37	10	3.9	97.2%
YTD:	48	-11.1%	\$9,122,750	-0.9%	\$190,057	11.5%	\$189,950	22.6%	\$95	7.9%	63	91	30	56		94.0%
Single Family	14	40.0%	\$2,999,600	70.2%	\$214,257	21.6%	\$197,500	42.1%	\$100	15.7%	35	25	37	10	3.9	97.2%
YTD:	48	-11.1%	\$9,122,750	-0.9%	\$190,057	11.5%	\$189,950	22.6%	\$95	7.9%	63	91	30	56		94.0%
Townhouse	-	0.0%	-	0.0%	-	0.0%	-	0.0%	-	0.0%	-	-	-	-	-	0.0%
YTD:	-	0.0%	-	0.0%	-	0.0%	-	0.0%	-	0.0%	-	-	-	-	-	0.0%
Condominium	-	0.0%	-	0.0%	-	0.0%	-	0.0%	-	0.0%	-	-	-	-	-	0.0%
YTD:	-	0.0%	-	0.0%	-	0.0%	-	0.0%	-	0.0%	-	-	-	-	-	0.0%
Existing Home																
Residential (SF/COND/TH)	14	40.0%	\$2,999,600	70.2%	\$214,257	21.6%	\$197,500	42.1%	\$100	15.7%	35	25	37	10	3.9	97.2%
YTD:	48	-11.1%	\$9,122,750	-0.9%	\$190,057	11.5%	\$189,950	22.6%	\$95	7.9%	63	89	29	56		94.0%
Single Family	14	40.0%	\$2,999,600	70.2%	\$214,257	21.6%	\$197,500	42.1%	\$100	15.7%	35	25	37	10	3.9	97.2%
YTD:	48	-11.1%	\$9,122,750	-0.9%	\$190,057	11.5%	\$189,950	22.6%	\$95	7.9%	63	89	29	56		94.0%
Townhouse	-	0.0%	-	0.0%	-	0.0%	-	0.0%	-	0.0%	-	-	-	-	-	0.0%
YTD:	-	0.0%	-	0.0%	-	0.0%	-	0.0%	-	0.0%	-	-	-	-	-	0.0%
Condominium	-	0.0%	-	0.0%	-	0.0%	-	0.0%	-	0.0%	-	-	-	-	-	0.0%
YTD:	-	0.0%	-	0.0%	-	0.0%	-	0.0%	-	0.0%	-	-	-	-	-	0.0%
New Construction																
Residential (SF/COND/TH)	-	0.0%	-	0.0%	-	0.0%	-	0.0%	-	0.0%	-	-	-	-	-	0.0%
YTD:	-	0.0%	-	0.0%	-	0.0%	-	0.0%	-	0.0%	-	2	1	-	-	0.0%
Single Family	-	0.0%	-	0.0%	-	0.0%	-	0.0%	-	0.0%	-	-	-	-	-	0.0%
YTD:	-	0.0%	-	0.0%	-	0.0%	-	0.0%	-	0.0%	-	2	1	-	-	0.0%
Townhouse	-	0.0%	-	0.0%	-	0.0%	-	0.0%	-	0.0%	-	-	-	-	-	0.0%
YTD:	-	0.0%	-	0.0%	-	0.0%	-	0.0%	-	0.0%	-	-	-	-	-	0.0%
Condominium	-	0.0%	-	0.0%	-	0.0%	-	0.0%	-	0.0%	-	-	-	-	-	0.0%
YTD:	-	0.0%	-	0.0%	-	0.0%	-	0.0%	-	0.0%	-	-	-	-	-	0.0%

* Local Market Area Code: 220; Type: Census Place Group
 ** Closed Sale counts for most recent 3 months are Preliminary.

Market Analysis By Local Market Area*: Lubbock

Property Type	Closed Sales**	YoY%	Dollar Volume	YoY%	Average Price	YoY%	Median Price	YoY%	Price/Sqft	YoY%	DOM	New Listings	Active Listings	Pending Sales	Months Inventory	Close To OLP
All(New and Existing)																
Residential (SF/COND/TH)	383	19.7%	\$105,494,025	26.3%	\$275,441	5.5%	\$235,000	1.2%	\$135	1.2%	32	527	676	366	2.4	97.6%
YTD:	1,393	-6.8%	\$361,710,428	-7.0%	\$259,663	-0.2%	\$225,000	0.0%	\$131	3.2%	35	2,400	601	1,592		96.8%
Single Family	372	20.0%	\$101,698,034	25.1%	\$273,382	4.2%	\$235,000	0.5%	\$135	1.4%	33	511	635	345	2.3	97.5%
YTD:	1,355	-6.4%	\$352,457,352	-7.3%	\$260,116	-0.9%	\$226,250	0.2%	\$131	3.0%	36	2,277	563	1,544		96.8%
Townhouse	8	33.3%	\$1,722,300	14.6%	\$215,288	-14.1%	\$219,750	-4.5%	\$141	-5.4%	18	13	38	19	6.9	100.4%
YTD:	30	-16.7%	\$6,301,650	-8.8%	\$210,055	9.4%	\$214,500	12.9%	\$133	7.3%	23	110	33	39		98.3%
Condominium	2	-50.0%	\$1,755,000	146.0%	\$877,500	392.0%	\$877,500	431.8%	\$142	-0.3%	10	3	3	2	1.3	97.6%
YTD:	7	-36.4%	\$2,704,000	31.7%	\$386,286	107.0%	\$220,000	27.9%	\$142	14.8%	8	13	4	9		97.3%
Existing Home																
Residential (SF/COND/TH)	330	12.6%	\$87,524,855	16.6%	\$265,227	3.5%	\$225,000	0.0%	\$130	0.3%	27	451	478	304	1.9	97.4%
YTD:	1,207	-8.6%	\$295,935,566	-9.4%	\$245,183	-0.8%	\$210,000	-2.3%	\$125	2.8%	29	1,935	404	1,376		96.7%
Single Family	326	15.2%	\$85,328,689	17.2%	\$261,744	1.7%	\$224,000	-0.4%	\$130	0.8%	28	440	463	297	1.9	97.4%
YTD:	1,178	-8.3%	\$288,674,647	-9.7%	\$245,055	-1.5%	\$210,000	-2.3%	\$125	2.7%	30	1,889	392	1,346		96.7%
Townhouse	2	-66.7%	\$375,000	-75.1%	\$187,500	-25.2%	\$187,500	-18.5%	\$114	-23.3%	3	8	12	5	3.0	101.7%
YTD:	22	-12.0%	\$4,553,850	-6.2%	\$206,993	6.6%	\$207,500	5.3%	\$127	6.1%	17	33	7	21		97.8%
Condominium	2	-50.0%	\$1,755,000	146.0%	\$877,500	392.0%	\$877,500	431.8%	\$142	-0.3%	10	3	3	2	1.3	97.6%
YTD:	7	-36.4%	\$2,704,000	31.7%	\$386,286	107.0%	\$220,000	27.9%	\$142	14.8%	8	13	4	9		97.3%
New Construction																
Residential (SF/COND/TH)	53	96.3%	\$17,965,697	111.9%	\$338,975	7.9%	\$326,000	14.4%	\$166	-4.6%	62	76	198	62	6.1	98.8%
YTD:	186	6.9%	\$65,803,823	5.4%	\$353,784	-1.4%	\$308,888	-2.7%	\$169	1.3%	73	465	197	216		97.4%
Single Family	47	74.1%	\$16,665,208	96.6%	\$354,579	12.9%	\$355,000	24.6%	\$168	-3.4%	68	71	172	48	5.6	98.6%
YTD:	178	9.2%	\$64,080,907	6.1%	\$360,005	-2.8%	\$317,000	-4.2%	\$170	0.5%	75	388	171	198		97.3%
Townhouse	6	100.0%	\$1,347,300	100.0%	\$224,550	100.0%	\$224,550	100.0%	\$150	100.0%	23	5	26	14	17.3	100.0%
YTD:	8	-27.3%	\$1,747,800	-15.0%	\$218,475	16.9%	\$214,500	15.3%	\$148	11.8%	40	77	26	18		99.8%
Condominium	-	0.0%	-	0.0%	-	0.0%	-	0.0%	-	0.0%	-	-	-	-	-	0.0%
YTD:	-	0.0%	-	0.0%	-	0.0%	-	0.0%	-	0.0%	-	-	-	-	-	0.0%

* Local Market Area Code: 596; Type: Census Place Group
 ** Closed Sale counts for most recent 3 months are Preliminary.

Market Analysis By Local Market Area*: New Deal

Property Type	Closed Sales**	YoY%	Dollar Volume	YoY%	Average Price	YoY%	Median Price	YoY%	Price/Sqft	YoY%	DOM	New Listings	Active Listings	Pending Sales	Months Inventory	Close To OLP
All(New and Existing)																
Residential (SF/COND/TH)	-	-100.0%	-	-100.0%	-	-100.0%	-	-100.0%	-	-100.0%	-	-	-	-	-	0.0%
YTD:	3	200.0%	\$632,800	247.7%	\$210,933	15.9%	\$194,900	7.1%	\$103	-6.0%	60	2	1	3	93.0%	
Single Family	-	-100.0%	-	-100.0%	-	-100.0%	-	-100.0%	-	-100.0%	-	-	-	-	-	0.0%
YTD:	3	200.0%	\$632,800	247.7%	\$210,933	15.9%	\$194,900	7.1%	\$103	-6.0%	60	2	1	3	93.0%	
Townhouse	-	0.0%	-	0.0%	-	0.0%	-	0.0%	-	0.0%	-	-	-	-	-	0.0%
YTD:	-	0.0%	-	0.0%	-	0.0%	-	0.0%	-	0.0%	-	-	-	-	-	0.0%
Condominium	-	0.0%	-	0.0%	-	0.0%	-	0.0%	-	0.0%	-	-	-	-	-	0.0%
YTD:	-	0.0%	-	0.0%	-	0.0%	-	0.0%	-	0.0%	-	-	-	-	-	0.0%
Existing Home																
Residential (SF/COND/TH)	-	-100.0%	-	-100.0%	-	-100.0%	-	-100.0%	-	-100.0%	-	-	-	-	-	0.0%
YTD:	3	200.0%	\$632,800	247.7%	\$210,933	15.9%	\$194,900	7.1%	\$103	-6.0%	60	2	1	3	93.0%	
Single Family	-	-100.0%	-	-100.0%	-	-100.0%	-	-100.0%	-	-100.0%	-	-	-	-	-	0.0%
YTD:	3	200.0%	\$632,800	247.7%	\$210,933	15.9%	\$194,900	7.1%	\$103	-6.0%	60	2	1	3	93.0%	
Townhouse	-	0.0%	-	0.0%	-	0.0%	-	0.0%	-	0.0%	-	-	-	-	-	0.0%
YTD:	-	0.0%	-	0.0%	-	0.0%	-	0.0%	-	0.0%	-	-	-	-	-	0.0%
Condominium	-	0.0%	-	0.0%	-	0.0%	-	0.0%	-	0.0%	-	-	-	-	-	0.0%
YTD:	-	0.0%	-	0.0%	-	0.0%	-	0.0%	-	0.0%	-	-	-	-	-	0.0%
New Construction																
Residential (SF/COND/TH)	-	0.0%	-	0.0%	-	0.0%	-	0.0%	-	0.0%	-	-	-	-	-	0.0%
YTD:	-	0.0%	-	0.0%	-	0.0%	-	0.0%	-	0.0%	-	-	-	-	-	0.0%
Single Family	-	0.0%	-	0.0%	-	0.0%	-	0.0%	-	0.0%	-	-	-	-	-	0.0%
YTD:	-	0.0%	-	0.0%	-	0.0%	-	0.0%	-	0.0%	-	-	-	-	-	0.0%
Townhouse	-	0.0%	-	0.0%	-	0.0%	-	0.0%	-	0.0%	-	-	-	-	-	0.0%
YTD:	-	0.0%	-	0.0%	-	0.0%	-	0.0%	-	0.0%	-	-	-	-	-	0.0%
Condominium	-	0.0%	-	0.0%	-	0.0%	-	0.0%	-	0.0%	-	-	-	-	-	0.0%
YTD:	-	0.0%	-	0.0%	-	0.0%	-	0.0%	-	0.0%	-	-	-	-	-	0.0%

* Local Market Area Code: 700; Type: Census Place Group
 ** Closed Sale counts for most recent 3 months are Preliminary.

Market Analysis By Local Market Area*: Ransom Canyon

Property Type	Closed Sales**	YoY%	Dollar Volume	YoY%	Average Price	YoY%	Median Price	YoY%	Price/Sqft	YoY%	DOM	New Listings	Active Listings	Pending Sales	Months Inventory	Close To OLP
All(New and Existing)																
Residential (SF/COND/TH)	2	-33.3%	\$644,000	-55.4%	\$322,000	-33.1%	\$322,000	-28.4%	\$130	-35.8%	29	4	5	3	3.3	94.7%
YTD:	7	-36.4%	\$3,327,000	-29.9%	\$475,286	10.2%	\$388,000	-7.6%	\$164	-10.6%	54	15	4	11		96.9%
Single Family	2	-33.3%	\$644,000	-55.4%	\$322,000	-33.1%	\$322,000	-28.4%	\$130	-35.8%	29	4	5	3	3.3	94.7%
YTD:	7	-36.4%	\$3,327,000	-29.9%	\$475,286	10.2%	\$388,000	-7.6%	\$164	-10.6%	54	15	4	11		96.9%
Townhouse	-	0.0%	-	0.0%	-	0.0%	-	0.0%	-	0.0%	-	-	-	-	-	0.0%
YTD:	-	0.0%	-	0.0%	-	0.0%	-	0.0%	-	0.0%	-	-	-	-	-	0.0%
Condominium	-	0.0%	-	0.0%	-	0.0%	-	0.0%	-	0.0%	-	-	-	-	-	0.0%
YTD:	-	0.0%	-	0.0%	-	0.0%	-	0.0%	-	0.0%	-	-	-	-	-	0.0%
Existing Home																
Residential (SF/COND/TH)	2	-33.3%	\$644,000	-55.4%	\$322,000	-33.1%	\$322,000	-28.4%	\$130	-35.8%	29	4	4	3	2.7	94.7%
YTD:	7	-30.0%	\$3,327,000	-22.8%	\$475,286	10.3%	\$388,000	-4.2%	\$164	-11.3%	54	15	3	11		96.9%
Single Family	2	-33.3%	\$644,000	-55.4%	\$322,000	-33.1%	\$322,000	-28.4%	\$130	-35.8%	29	4	4	3	2.7	94.7%
YTD:	7	-30.0%	\$3,327,000	-22.8%	\$475,286	10.3%	\$388,000	-4.2%	\$164	-11.3%	54	15	3	11		96.9%
Townhouse	-	0.0%	-	0.0%	-	0.0%	-	0.0%	-	0.0%	-	-	-	-	-	0.0%
YTD:	-	0.0%	-	0.0%	-	0.0%	-	0.0%	-	0.0%	-	-	-	-	-	0.0%
Condominium	-	0.0%	-	0.0%	-	0.0%	-	0.0%	-	0.0%	-	-	-	-	-	0.0%
YTD:	-	0.0%	-	0.0%	-	0.0%	-	0.0%	-	0.0%	-	-	-	-	-	0.0%
New Construction																
Residential (SF/COND/TH)	-	0.0%	-	0.0%	-	0.0%	-	0.0%	-	0.0%	-	-	1	-	-	0.0%
YTD:	-	-100.0%	-	-100.0%	-	-100.0%	-	-100.0%	-	-100.0%	-	-	1	-	-	0.0%
Single Family	-	0.0%	-	0.0%	-	0.0%	-	0.0%	-	0.0%	-	-	1	-	-	0.0%
YTD:	-	-100.0%	-	-100.0%	-	-100.0%	-	-100.0%	-	-100.0%	-	-	1	-	-	0.0%
Townhouse	-	0.0%	-	0.0%	-	0.0%	-	0.0%	-	0.0%	-	-	-	-	-	0.0%
YTD:	-	0.0%	-	0.0%	-	0.0%	-	0.0%	-	0.0%	-	-	-	-	-	0.0%
Condominium	-	0.0%	-	0.0%	-	0.0%	-	0.0%	-	0.0%	-	-	-	-	-	0.0%
YTD:	-	0.0%	-	0.0%	-	0.0%	-	0.0%	-	0.0%	-	-	-	-	-	0.0%

* Local Market Area Code: 826; Type: Census Place Group
 ** Closed Sale counts for most recent 3 months are Preliminary.

Market Analysis By Local Market Area*: Ropesville

Property Type	Closed Sales**	YoY%	Dollar Volume	YoY%	Average Price	YoY%	Median Price	YoY%	Price/Sqft	YoY%	DOM	New Listings	Active Listings	Pending Sales	Months Inventory	Close To OLP
All(New and Existing)																
Residential (SF/COND/TH)	2	100.0%	\$690,000	100.0%	\$345,000	100.0%	\$345,000	100.0%	\$158	100.0%	148	-	-	1	-	96.7%
YTD:	2	100.0%	\$690,000	100.0%	\$345,000	100.0%	\$345,000	100.0%	\$158	100.0%	148	1	1	2	-	96.7%
Single Family	2	100.0%	\$690,000	100.0%	\$345,000	100.0%	\$345,000	100.0%	\$158	100.0%	148	-	-	1	-	96.7%
YTD:	2	100.0%	\$690,000	100.0%	\$345,000	100.0%	\$345,000	100.0%	\$158	100.0%	148	1	1	2	-	96.7%
Townhouse	-	0.0%	-	0.0%	-	0.0%	-	0.0%	-	0.0%	-	-	-	-	-	0.0%
YTD:	-	0.0%	-	0.0%	-	0.0%	-	0.0%	-	0.0%	-	-	-	-	-	0.0%
Condominium	-	0.0%	-	0.0%	-	0.0%	-	0.0%	-	0.0%	-	-	-	-	-	0.0%
YTD:	-	0.0%	-	0.0%	-	0.0%	-	0.0%	-	0.0%	-	-	-	-	-	0.0%
Existing Home																
Residential (SF/COND/TH)	1	100.0%	\$225,000	100.0%	\$225,000	100.0%	\$225,000	100.0%	\$132	100.0%	65	-	-	1	-	90.0%
YTD:	1	100.0%	\$225,000	100.0%	\$225,000	100.0%	\$225,000	100.0%	\$132	100.0%	65	1	-	1	-	90.0%
Single Family	1	100.0%	\$225,000	100.0%	\$225,000	100.0%	\$225,000	100.0%	\$132	100.0%	65	-	-	1	-	90.0%
YTD:	1	100.0%	\$225,000	100.0%	\$225,000	100.0%	\$225,000	100.0%	\$132	100.0%	65	1	-	1	-	90.0%
Townhouse	-	0.0%	-	0.0%	-	0.0%	-	0.0%	-	0.0%	-	-	-	-	-	0.0%
YTD:	-	0.0%	-	0.0%	-	0.0%	-	0.0%	-	0.0%	-	-	-	-	-	0.0%
Condominium	-	0.0%	-	0.0%	-	0.0%	-	0.0%	-	0.0%	-	-	-	-	-	0.0%
YTD:	-	0.0%	-	0.0%	-	0.0%	-	0.0%	-	0.0%	-	-	-	-	-	0.0%
New Construction																
Residential (SF/COND/TH)	1	100.0%	\$465,000	100.0%	\$465,000	100.0%	\$465,000	100.0%	\$185	100.0%	231	-	-	-	-	103.3%
YTD:	1	100.0%	\$465,000	100.0%	\$465,000	100.0%	\$465,000	100.0%	\$185	100.0%	231	-	1	1	-	103.3%
Single Family	1	100.0%	\$465,000	100.0%	\$465,000	100.0%	\$465,000	100.0%	\$185	100.0%	231	-	-	-	-	103.3%
YTD:	1	100.0%	\$465,000	100.0%	\$465,000	100.0%	\$465,000	100.0%	\$185	100.0%	231	-	1	1	-	103.3%
Townhouse	-	0.0%	-	0.0%	-	0.0%	-	0.0%	-	0.0%	-	-	-	-	-	0.0%
YTD:	-	0.0%	-	0.0%	-	0.0%	-	0.0%	-	0.0%	-	-	-	-	-	0.0%
Condominium	-	0.0%	-	0.0%	-	0.0%	-	0.0%	-	0.0%	-	-	-	-	-	0.0%
YTD:	-	0.0%	-	0.0%	-	0.0%	-	0.0%	-	0.0%	-	-	-	-	-	0.0%

* Local Market Area Code: 222; Type: Census Place Group
 ** Closed Sale counts for most recent 3 months are Preliminary.

Market Analysis By Local Market Area*: Shallowater

Property Type	Closed Sales**	YoY%	Dollar Volume	YoY%	Average Price	YoY%	Median Price	YoY%	Price/Sqft	YoY%	DOM	New Listings	Active Listings	Pending Sales	Months Inventory	Close To OLP
All(New and Existing)																
Residential (SF/COND/TH)	3	-57.1%	\$834,950	-68.6%	\$278,317	-26.7%	\$295,000	-25.8%	\$154	8.3%	53	2	11	1	2.9	99.5%
YTD:	11	-47.6%	\$3,191,134	-57.6%	\$290,103	-19.1%	\$299,284	-21.9%	\$146	-4.2%	86	21	13	12		95.5%
Single Family	3	-57.1%	\$834,950	-68.6%	\$278,317	-26.7%	\$295,000	-25.8%	\$154	8.3%	53	2	11	1	2.9	99.5%
YTD:	11	-47.6%	\$3,191,134	-57.6%	\$290,103	-19.1%	\$299,284	-21.9%	\$146	-4.2%	86	21	13	12		95.5%
Townhouse	-	0.0%	-	0.0%	-	0.0%	-	0.0%	-	0.0%	-	-	-	-	-	0.0%
YTD:	-	0.0%	-	0.0%	-	0.0%	-	0.0%	-	0.0%	-	-	-	-	-	0.0%
Condominium	-	0.0%	-	0.0%	-	0.0%	-	0.0%	-	0.0%	-	-	-	-	-	0.0%
YTD:	-	0.0%	-	0.0%	-	0.0%	-	0.0%	-	0.0%	-	-	-	-	-	0.0%
Existing Home																
Residential (SF/COND/TH)	2	-66.7%	\$494,950	-77.8%	\$247,475	-33.3%	\$247,475	-24.7%	\$148	8.0%	14	2	7	1	2.3	99.2%
YTD:	6	-57.1%	\$1,390,350	-70.0%	\$231,725	-30.1%	\$217,475	-22.0%	\$131	-7.1%	22	16	5	7		96.1%
Single Family	2	-66.7%	\$494,950	-77.8%	\$247,475	-33.3%	\$247,475	-24.7%	\$148	8.0%	14	2	7	1	2.3	99.2%
YTD:	6	-57.1%	\$1,390,350	-70.0%	\$231,725	-30.1%	\$217,475	-22.0%	\$131	-7.1%	22	16	5	7		96.1%
Townhouse	-	0.0%	-	0.0%	-	0.0%	-	0.0%	-	0.0%	-	-	-	-	-	0.0%
YTD:	-	0.0%	-	0.0%	-	0.0%	-	0.0%	-	0.0%	-	-	-	-	-	0.0%
Condominium	-	0.0%	-	0.0%	-	0.0%	-	0.0%	-	0.0%	-	-	-	-	-	0.0%
YTD:	-	0.0%	-	0.0%	-	0.0%	-	0.0%	-	0.0%	-	-	-	-	-	0.0%
New Construction																
Residential (SF/COND/TH)	1	0.0%	\$340,000	-21.3%	\$340,000	-21.3%	\$340,000	-21.3%	\$168	-5.7%	131	-	4	-	5.3	100.0%
YTD:	5	-28.6%	\$1,800,784	-37.7%	\$360,157	-12.8%	\$340,000	-20.8%	\$164	-6.2%	162	5	7	5		94.7%
Single Family	1	0.0%	\$340,000	-21.3%	\$340,000	-21.3%	\$340,000	-21.3%	\$168	-5.7%	131	-	4	-	5.3	100.0%
YTD:	5	-28.6%	\$1,800,784	-37.7%	\$360,157	-12.8%	\$340,000	-20.8%	\$164	-6.2%	162	5	7	5		94.7%
Townhouse	-	0.0%	-	0.0%	-	0.0%	-	0.0%	-	0.0%	-	-	-	-	-	0.0%
YTD:	-	0.0%	-	0.0%	-	0.0%	-	0.0%	-	0.0%	-	-	-	-	-	0.0%
Condominium	-	0.0%	-	0.0%	-	0.0%	-	0.0%	-	0.0%	-	-	-	-	-	0.0%
YTD:	-	0.0%	-	0.0%	-	0.0%	-	0.0%	-	0.0%	-	-	-	-	-	0.0%

* Local Market Area Code: 925; Type: Census Place Group
 ** Closed Sale counts for most recent 3 months are Preliminary.

Market Analysis By Local Market Area*: Slaton

Property Type	Closed Sales**	YoY%	Dollar Volume	YoY%	Average Price	YoY%	Median Price	YoY%	Price/Sqft	YoY%	DOM	New Listings	Active Listings	Pending Sales	Months Inventory	Close To OLP
All(New and Existing)																
Residential (SF/COND/TH)	4	-20.0%	\$539,250	-33.8%	\$134,813	-17.2%	\$117,625	-32.8%	\$86	-18.6%	5	8	22	6	6.4	94.7%
YTD:	17	-29.2%	\$2,666,180	-22.0%	\$156,834	10.2%	\$148,000	13.4%	\$94	5.9%	42	44	17	20		91.7%
Single Family	4	-20.0%	\$539,250	-33.8%	\$134,813	-17.2%	\$117,625	-32.8%	\$86	-18.6%	5	8	21	6	6.1	94.7%
YTD:	17	-29.2%	\$2,666,180	-22.0%	\$156,834	10.2%	\$148,000	13.4%	\$94	5.9%	42	43	16	20		91.7%
Townhouse	-	0.0%	-	0.0%	-	0.0%	-	0.0%	-	0.0%	-	-	-	-	-	0.0%
YTD:	-	0.0%	-	0.0%	-	0.0%	-	0.0%	-	0.0%	-	-	-	-	-	0.0%
Condominium	-	0.0%	-	0.0%	-	0.0%	-	0.0%	-	0.0%	-	-	1	-	-	0.0%
YTD:	-	0.0%	-	0.0%	-	0.0%	-	0.0%	-	0.0%	-	1	1	-	-	0.0%
Existing Home																
Residential (SF/COND/TH)	4	-20.0%	\$539,250	-33.8%	\$134,813	-17.2%	\$117,625	-32.8%	\$86	-18.6%	5	7	19	6	5.7	94.7%
YTD:	17	-29.2%	\$2,666,180	-22.0%	\$156,834	10.2%	\$148,000	13.4%	\$94	5.9%	42	42	14	20		91.7%
Single Family	4	-20.0%	\$539,250	-33.8%	\$134,813	-17.2%	\$117,625	-32.8%	\$86	-18.6%	5	7	18	6	5.4	94.7%
YTD:	17	-29.2%	\$2,666,180	-22.0%	\$156,834	10.2%	\$148,000	13.4%	\$94	5.9%	42	41	14	20		91.7%
Townhouse	-	0.0%	-	0.0%	-	0.0%	-	0.0%	-	0.0%	-	-	-	-	-	0.0%
YTD:	-	0.0%	-	0.0%	-	0.0%	-	0.0%	-	0.0%	-	-	-	-	-	0.0%
Condominium	-	0.0%	-	0.0%	-	0.0%	-	0.0%	-	0.0%	-	-	1	-	-	0.0%
YTD:	-	0.0%	-	0.0%	-	0.0%	-	0.0%	-	0.0%	-	1	1	-	-	0.0%
New Construction																
Residential (SF/COND/TH)	-	0.0%	-	0.0%	-	0.0%	-	0.0%	-	0.0%	-	1	3	-	36.0	0.0%
YTD:	-	0.0%	-	0.0%	-	0.0%	-	0.0%	-	0.0%	-	2	2	-	-	0.0%
Single Family	-	0.0%	-	0.0%	-	0.0%	-	0.0%	-	0.0%	-	1	3	-	36.0	0.0%
YTD:	-	0.0%	-	0.0%	-	0.0%	-	0.0%	-	0.0%	-	2	2	-	-	0.0%
Townhouse	-	0.0%	-	0.0%	-	0.0%	-	0.0%	-	0.0%	-	-	-	-	-	0.0%
YTD:	-	0.0%	-	0.0%	-	0.0%	-	0.0%	-	0.0%	-	-	-	-	-	0.0%
Condominium	-	0.0%	-	0.0%	-	0.0%	-	0.0%	-	0.0%	-	-	-	-	-	0.0%
YTD:	-	0.0%	-	0.0%	-	0.0%	-	0.0%	-	0.0%	-	-	-	-	-	0.0%

* Local Market Area Code: 935; Type: Census Place Group
 ** Closed Sale counts for most recent 3 months are Preliminary.

Market Analysis By Local Market Area*: Smyer

Property Type	Closed Sales**	YoY%	Dollar Volume	YoY%	Average Price	YoY%	Median Price	YoY%	Price/Sqft	YoY%	DOM	New Listings	Active Listings	Pending Sales	Months Inventory	Close To OLP
All(New and Existing)																
Residential (SF/COND/TH)	-	0.0%	-	0.0%	-	0.0%	-	0.0%	-	0.0%	-	-	-	-	-	0.0%
YTD:	-	0.0%	-	0.0%	-	0.0%	-	0.0%	-	0.0%	-	-	-	-	-	0.0%
Single Family	-	0.0%	-	0.0%	-	0.0%	-	0.0%	-	0.0%	-	-	-	-	-	0.0%
YTD:	-	0.0%	-	0.0%	-	0.0%	-	0.0%	-	0.0%	-	-	-	-	-	0.0%
Townhouse	-	0.0%	-	0.0%	-	0.0%	-	0.0%	-	0.0%	-	-	-	-	-	0.0%
YTD:	-	0.0%	-	0.0%	-	0.0%	-	0.0%	-	0.0%	-	-	-	-	-	0.0%
Condominium	-	0.0%	-	0.0%	-	0.0%	-	0.0%	-	0.0%	-	-	-	-	-	0.0%
YTD:	-	0.0%	-	0.0%	-	0.0%	-	0.0%	-	0.0%	-	-	-	-	-	0.0%
Existing Home																
Residential (SF/COND/TH)	-	0.0%	-	0.0%	-	0.0%	-	0.0%	-	0.0%	-	-	-	-	-	0.0%
YTD:	-	0.0%	-	0.0%	-	0.0%	-	0.0%	-	0.0%	-	-	-	-	-	0.0%
Single Family	-	0.0%	-	0.0%	-	0.0%	-	0.0%	-	0.0%	-	-	-	-	-	0.0%
YTD:	-	0.0%	-	0.0%	-	0.0%	-	0.0%	-	0.0%	-	-	-	-	-	0.0%
Townhouse	-	0.0%	-	0.0%	-	0.0%	-	0.0%	-	0.0%	-	-	-	-	-	0.0%
YTD:	-	0.0%	-	0.0%	-	0.0%	-	0.0%	-	0.0%	-	-	-	-	-	0.0%
Condominium	-	0.0%	-	0.0%	-	0.0%	-	0.0%	-	0.0%	-	-	-	-	-	0.0%
YTD:	-	0.0%	-	0.0%	-	0.0%	-	0.0%	-	0.0%	-	-	-	-	-	0.0%
New Construction																
Residential (SF/COND/TH)	-	0.0%	-	0.0%	-	0.0%	-	0.0%	-	0.0%	-	-	-	-	-	0.0%
YTD:	-	0.0%	-	0.0%	-	0.0%	-	0.0%	-	0.0%	-	-	-	-	-	0.0%
Single Family	-	0.0%	-	0.0%	-	0.0%	-	0.0%	-	0.0%	-	-	-	-	-	0.0%
YTD:	-	0.0%	-	0.0%	-	0.0%	-	0.0%	-	0.0%	-	-	-	-	-	0.0%
Townhouse	-	0.0%	-	0.0%	-	0.0%	-	0.0%	-	0.0%	-	-	-	-	-	0.0%
YTD:	-	0.0%	-	0.0%	-	0.0%	-	0.0%	-	0.0%	-	-	-	-	-	0.0%
Condominium	-	0.0%	-	0.0%	-	0.0%	-	0.0%	-	0.0%	-	-	-	-	-	0.0%
YTD:	-	0.0%	-	0.0%	-	0.0%	-	0.0%	-	0.0%	-	-	-	-	-	0.0%

* Local Market Area Code: 491; Type: Census Place Group
 ** Closed Sale counts for most recent 3 months are Preliminary.

Market Analysis By Local Market Area*: Sundown

Property Type	Closed Sales**	YoY%	Dollar Volume	YoY%	Average Price	YoY%	Median Price	YoY%	Price/Sqft	YoY%	DOM	New Listings	Active Listings	Pending Sales	Months Inventory	Close To OLP
All(New and Existing)																
Residential (SF/COND/TH)	-	0.0%	-	0.0%	-	0.0%	-	0.0%	-	0.0%	-	2	2	3	24.0	0.0%
YTD:	-	-100.0%	-	-100.0%	-	-100.0%	-	-100.0%	-	-100.0%	-	6	2	3		0.0%
Single Family	-	0.0%	-	0.0%	-	0.0%	-	0.0%	-	0.0%	-	2	2	3	24.0	0.0%
YTD:	-	-100.0%	-	-100.0%	-	-100.0%	-	-100.0%	-	-100.0%	-	6	2	3		0.0%
Townhouse	-	0.0%	-	0.0%	-	0.0%	-	0.0%	-	0.0%	-	-	-	-	-	0.0%
YTD:	-	0.0%	-	0.0%	-	0.0%	-	0.0%	-	0.0%	-	-	-	-	-	0.0%
Condominium	-	0.0%	-	0.0%	-	0.0%	-	0.0%	-	0.0%	-	-	-	-	-	0.0%
YTD:	-	0.0%	-	0.0%	-	0.0%	-	0.0%	-	0.0%	-	-	-	-	-	0.0%
Existing Home																
Residential (SF/COND/TH)	-	0.0%	-	0.0%	-	0.0%	-	0.0%	-	0.0%	-	2	2	3	24.0	0.0%
YTD:	-	-100.0%	-	-100.0%	-	-100.0%	-	-100.0%	-	-100.0%	-	6	2	3		0.0%
Single Family	-	0.0%	-	0.0%	-	0.0%	-	0.0%	-	0.0%	-	2	2	3	24.0	0.0%
YTD:	-	-100.0%	-	-100.0%	-	-100.0%	-	-100.0%	-	-100.0%	-	6	2	3		0.0%
Townhouse	-	0.0%	-	0.0%	-	0.0%	-	0.0%	-	0.0%	-	-	-	-	-	0.0%
YTD:	-	0.0%	-	0.0%	-	0.0%	-	0.0%	-	0.0%	-	-	-	-	-	0.0%
Condominium	-	0.0%	-	0.0%	-	0.0%	-	0.0%	-	0.0%	-	-	-	-	-	0.0%
YTD:	-	0.0%	-	0.0%	-	0.0%	-	0.0%	-	0.0%	-	-	-	-	-	0.0%
New Construction																
Residential (SF/COND/TH)	-	0.0%	-	0.0%	-	0.0%	-	0.0%	-	0.0%	-	-	-	-	-	0.0%
YTD:	-	0.0%	-	0.0%	-	0.0%	-	0.0%	-	0.0%	-	-	-	-	-	0.0%
Single Family	-	0.0%	-	0.0%	-	0.0%	-	0.0%	-	0.0%	-	-	-	-	-	0.0%
YTD:	-	0.0%	-	0.0%	-	0.0%	-	0.0%	-	0.0%	-	-	-	-	-	0.0%
Townhouse	-	0.0%	-	0.0%	-	0.0%	-	0.0%	-	0.0%	-	-	-	-	-	0.0%
YTD:	-	0.0%	-	0.0%	-	0.0%	-	0.0%	-	0.0%	-	-	-	-	-	0.0%
Condominium	-	0.0%	-	0.0%	-	0.0%	-	0.0%	-	0.0%	-	-	-	-	-	0.0%
YTD:	-	0.0%	-	0.0%	-	0.0%	-	0.0%	-	0.0%	-	-	-	-	-	0.0%

* Local Market Area Code: 223; Type: Census Place Group
 ** Closed Sale counts for most recent 3 months are Preliminary.

Market Analysis By Local Market Area*: Wolfforth

Property Type	Closed Sales**	YoY%	Dollar Volume	YoY%	Average Price	YoY%	Median Price	YoY%	Price/Sqft	YoY%	DOM	New Listings	Active Listings	Pending Sales	Months Inventory	Close To OLP
All(New and Existing)																
Residential (SF/COND/TH)	23	-4.2%	\$8,577,495	10.0%	\$372,935	14.8%	\$305,845	-11.3%	\$161	7.3%	28	31	54	18	3.2	98.6%
YTD:	94	-9.6%	\$29,399,339	-7.1%	\$312,759	2.8%	\$296,300	-2.1%	\$150	2.9%	47	164	52	108		98.1%
Single Family	23	-4.2%	\$8,577,495	10.0%	\$372,935	14.8%	\$305,845	-11.3%	\$161	7.3%	28	31	53	18	3.2	98.6%
YTD:	94	-4.1%	\$29,399,339	-3.8%	\$312,759	0.3%	\$296,300	-6.5%	\$150	2.8%	47	163	52	108		98.1%
Townhouse	-	0.0%	-	0.0%	-	0.0%	-	0.0%	-	0.0%	-	-	1	-	-	0.0%
YTD:	-	-100.0%	-	-100.0%	-	-100.0%	-	-100.0%	-	-100.0%	-	1	1	-	-	0.0%
Condominium	-	0.0%	-	0.0%	-	0.0%	-	0.0%	-	0.0%	-	-	-	-	-	0.0%
YTD:	-	0.0%	-	0.0%	-	0.0%	-	0.0%	-	0.0%	-	-	-	-	-	0.0%
Existing Home																
Residential (SF/COND/TH)	13	-7.1%	\$4,719,150	18.0%	\$363,012	27.0%	\$255,000	-13.4%	\$153	15.8%	14	20	29	14	3.3	97.6%
YTD:	43	-8.5%	\$12,453,799	-2.0%	\$289,623	7.2%	\$260,000	-3.7%	\$138	11.2%	29	93	20	59		97.3%
Single Family	13	-7.1%	\$4,719,150	18.0%	\$363,012	27.0%	\$255,000	-13.4%	\$153	15.8%	14	20	28	14	3.2	97.6%
YTD:	43	-8.5%	\$12,453,799	-2.0%	\$289,623	7.2%	\$260,000	-3.7%	\$138	11.2%	29	92	20	59		97.3%
Townhouse	-	0.0%	-	0.0%	-	0.0%	-	0.0%	-	0.0%	-	-	1	-	-	0.0%
YTD:	-	0.0%	-	0.0%	-	0.0%	-	0.0%	-	0.0%	-	1	1	-	-	0.0%
Condominium	-	0.0%	-	0.0%	-	0.0%	-	0.0%	-	0.0%	-	-	-	-	-	0.0%
YTD:	-	0.0%	-	0.0%	-	0.0%	-	0.0%	-	0.0%	-	-	-	-	-	0.0%
New Construction																
Residential (SF/COND/TH)	10	0.0%	\$3,858,345	1.6%	\$385,835	1.6%	\$351,280	-2.1%	\$170	-2.2%	47	11	25	4	3.2	99.9%
YTD:	51	-10.5%	\$16,945,540	-10.5%	\$332,265	0.0%	\$301,500	-6.7%	\$160	-2.1%	63	71	32	49		98.8%
Single Family	10	0.0%	\$3,858,345	1.6%	\$385,835	1.6%	\$351,280	-2.1%	\$170	-2.2%	47	11	25	4	3.2	99.9%
YTD:	51	0.0%	\$16,945,540	-5.2%	\$332,265	-5.2%	\$301,500	-13.6%	\$160	-3.5%	63	71	32	49		98.8%
Townhouse	-	0.0%	-	0.0%	-	0.0%	-	0.0%	-	0.0%	-	-	-	-	-	0.0%
YTD:	-	-100.0%	-	-100.0%	-	-100.0%	-	-100.0%	-	-100.0%	-	-	-	-	-	0.0%
Condominium	-	0.0%	-	0.0%	-	0.0%	-	0.0%	-	0.0%	-	-	-	-	-	0.0%
YTD:	-	0.0%	-	0.0%	-	0.0%	-	0.0%	-	0.0%	-	-	-	-	-	0.0%

* Local Market Area Code: 1096; Type: Census Place Group
 ** Closed Sale counts for most recent 3 months are Preliminary.

